



Jakarta Intercultural School

# Annual Report

2023 - 2024





France

Finland



## From the Head of School



As a longtime Dragon with a special connection to JIS, I am often asked what invariably draws me back here time and time again. As many of you know, I was introduced to this wonderful school as a student, before returning to become a teacher, then a JIS parent and Elementary School Principal.

Now, as Head of School, I can definitively say that nowhere else have I experienced a more resilient, nurturing community that is so passionate about education and doing what is absolutely best for its students' educational growth.

This Annual Report reflects that and more. Spanning the period of 2022 to the present, it offers a broad view of how we pursue our vision and mission while using facts and figures to reflect the immense dedication, heart, and hard work that has been poured into the success of our school. The following pages tell a story of recovery, transformation, and expansion for JIS; each chapter is shaped by our achievements and milestones, by new programs and strengthened commitments.

Some notable highlights you will find in this report include:

- a breakdown of enrollment figures, university acceptance rates, and expenditures;
- the tangible progress and impacts of our social responsibility programs like JIS Peduli, the Bhinneka Tunggal Ika (BTI) Scholarship, and Innovative Schools Programme (ISP);
- schoolwide and divisional teaching and learning;
- detailed faculty profiles;
- and much more.

I'm sure you'll agree that each is worthy of both reflection and celebration. These findings will also be utilized as a valuable resource to identify effective strategies and areas of improvement, serving as a guide to further enhance our curriculums, programs, and overall educational experience for all JIS students.

Of course, I can't speak about celebrating our achievements without shining a well-deserved spotlight on our dedicated administrators, teachers, and staff. Their hard work and unwavering commitment to our students have been a driving force behind our success. Their tremendous efforts are truly commendable, and I thank them for all the amazing things they do for JIS.

Last but not least, I must extend my gratitude for your interest in our school's performance and progress thus far. Your support underscores your invaluable commitment to our ongoing progress and future direction as both a trusted educational institution and a thriving, inclusive community. There is still so much in store for us — more potential and more opportunities — and I look forward to navigating the journey ahead together.

Warm regards,

Maya Nelson  
Head of School

# CLASS OF 2024

## COMMEMORATION



## From the Chairman of the Board of Trustees



Dear Parents,

First and foremost, I want to express my sincere gratitude to you for entrusting JIS with the very important responsibility of educating your children, and for your continued support of the school. Your partnership is what allows our community to thrive.

As an alumnus and alumni-parent, I have witnessed first hand the impact of transformative learning on my children, and how our educators and resources have helped prepare them to be Best for the World. I believe there is something truly special about JIS and as the Chair of the Board of Trustees (BOT), it is my duty to preserve those special aspects of our school. It is a responsibility that I exercise with integrity, and with the legacy and future of JIS in mind.

Of course, I don't do this alone. I work alongside a group of strong professionals which include parents, fellow alumni, faculty and staff, and community members to support the school's mission and vision while ensuring that we exercise best practices in institutional governance. In collaboration with school leadership, we develop the strategic goals of the school based on what is best for our students, parents, faculty and staff. This includes and is not limited to:

- Ensuring and enhancing a strong learning model and curriculum that includes systems development, developing student dispositions and an academic program which is comprehensive;
- Creating an Advancement Program for fundraising and alumni engagement;
- Building our marketing and communications efforts;
- Investing in the renovation of learning spaces and facilities; and
- Enhancing our athletics program.

You will see the progress we have made over the years in this report, along with other important information. Our highest priority and commitment will always remain to your children's education and the overall success of the school. Thank you to my fellow BOT members for embarking on this journey with me, and again to you—our parent community—for your continued support.

Kind regards,

Phil Rickard  
Chairman of the Board of Trustees  
Jakarta Intercultural School

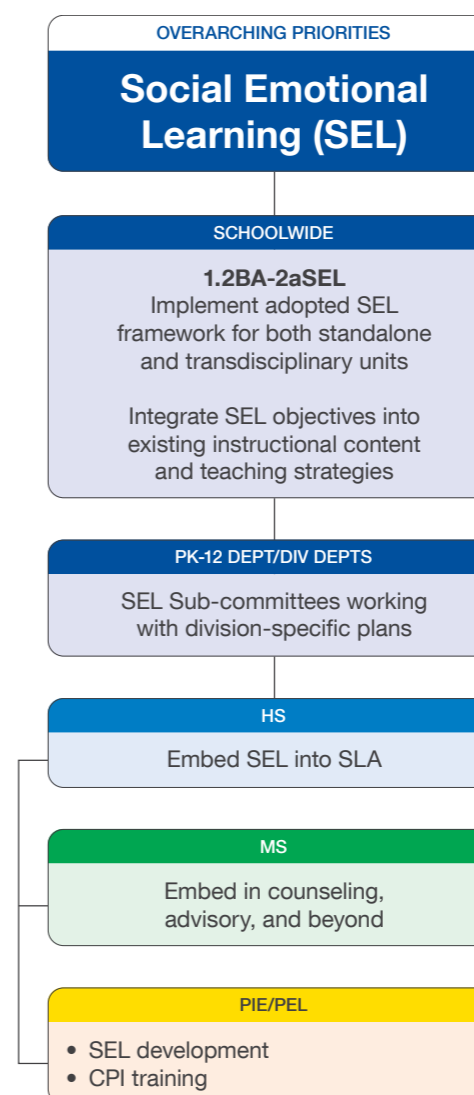


# Our Educational Program

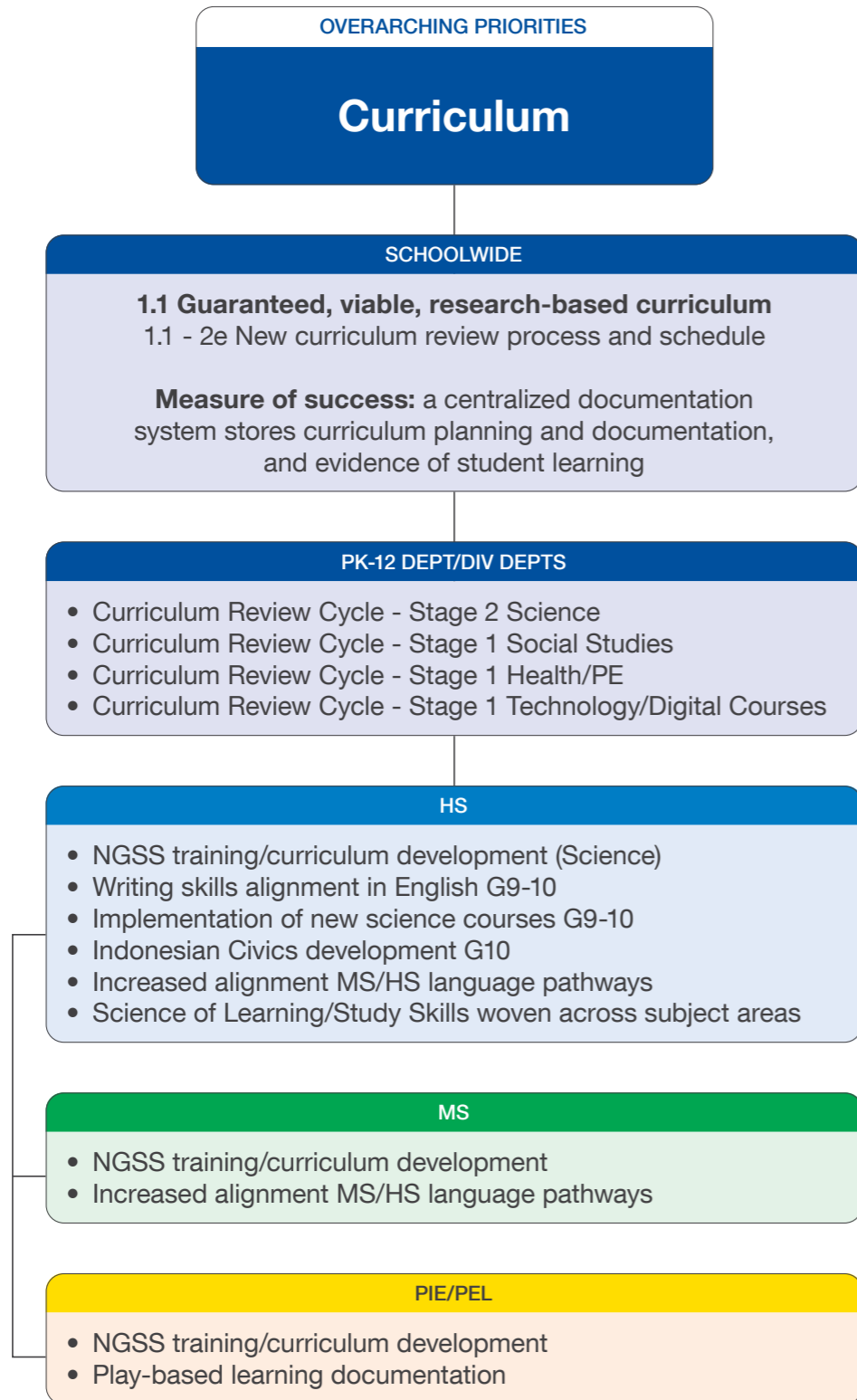
The Office of Teaching and Learning guides the school in providing a high-quality academic program to all students based on the best education practices from all over the world. Our dedicated academic leadership team ensures that learning is both fun and rigorous, and that students grow to be future-ready and compassionate critical thinkers.

## 2023 - 2024 Strategic Plan

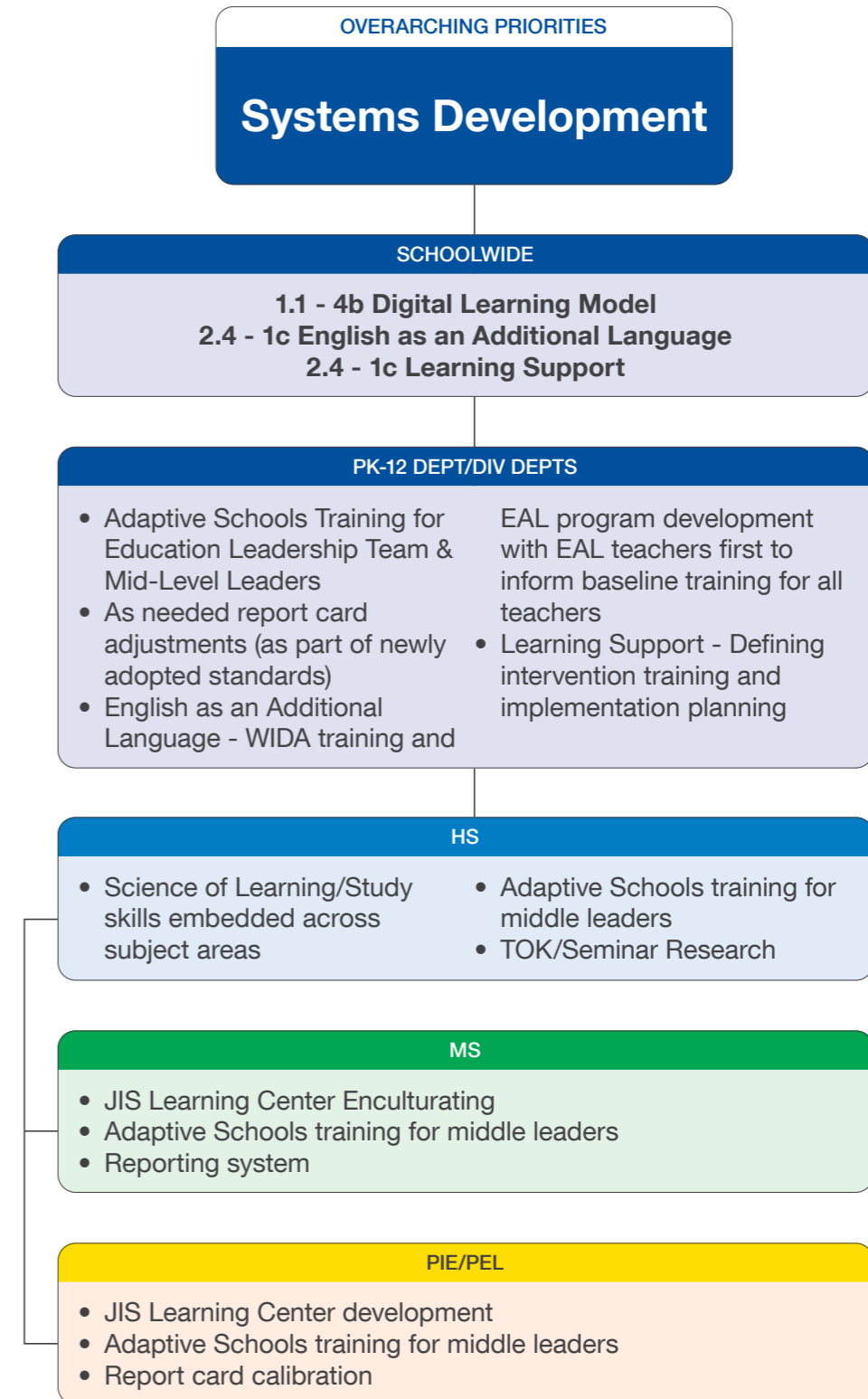
Aligned with Divisional Initiatives



## 2023 - 2024 Strategic Plan Aligned with Divisional Initiatives



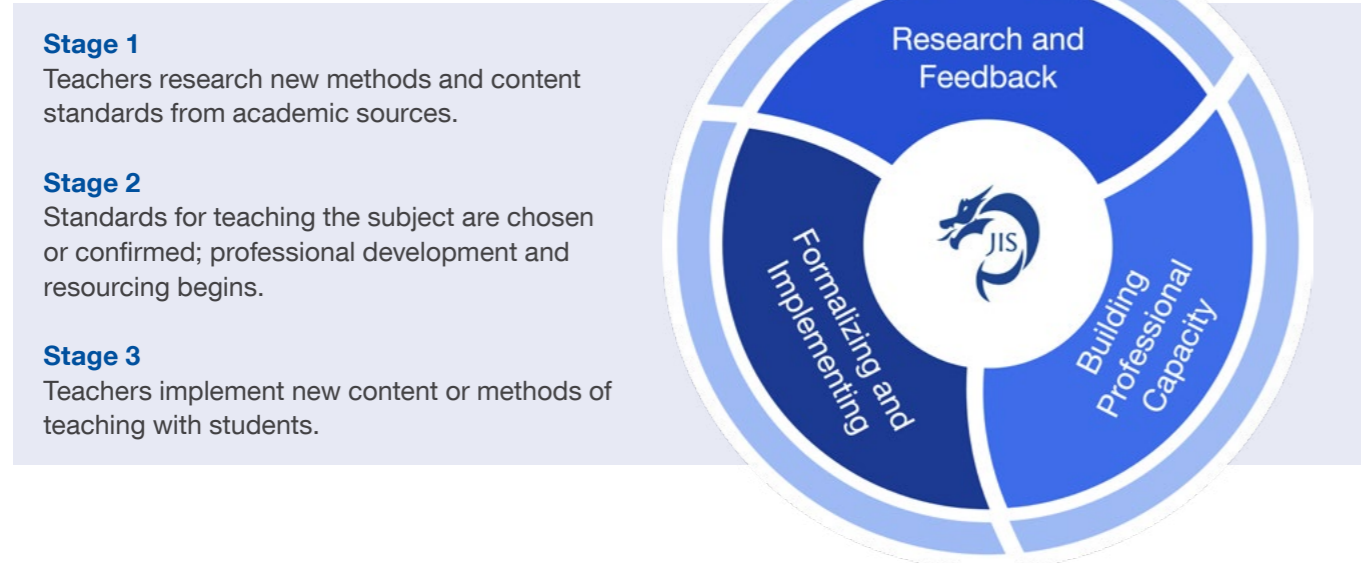
## 2023 - 2024 Strategic Plan Aligned with Divisional Initiatives



## Curriculum Review

To maintain a high-quality academic program that aligns with tier-one education standards, we review our curriculum in cycles.

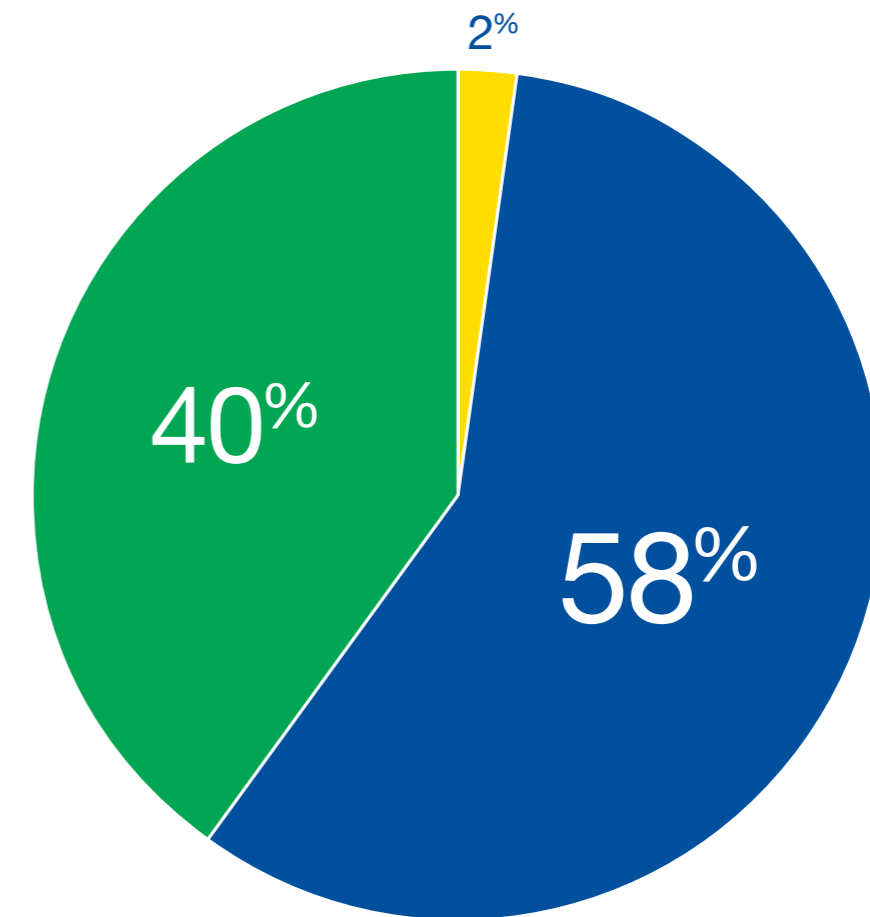
Curriculum review is a systematic process to review and revise the curriculum to continually improve the learning experience for JIS students.



For the 2023 - 2026 cycle, we will review the health, physical education, social studies, and technology components of the curriculum. All changes are made carefully with consideration from teachers, department heads, administrators, and visiting consultants, and are in compliance with Ministry of Education (MoE) regulations.



## IB and AP Programs 2023 - 2024



● IB Diploma

G11 86 students  
G12 84 students  
**Total: 170 students/427 = 40%**

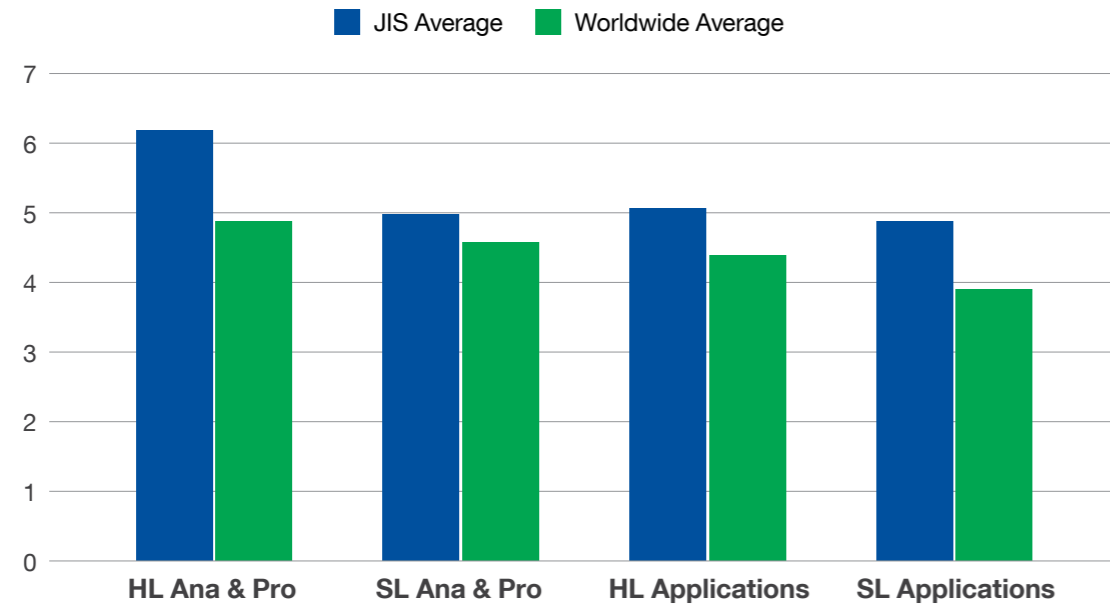
● AP Students

G11/12 335 students  
**Total: 247 students/427 = 58%**

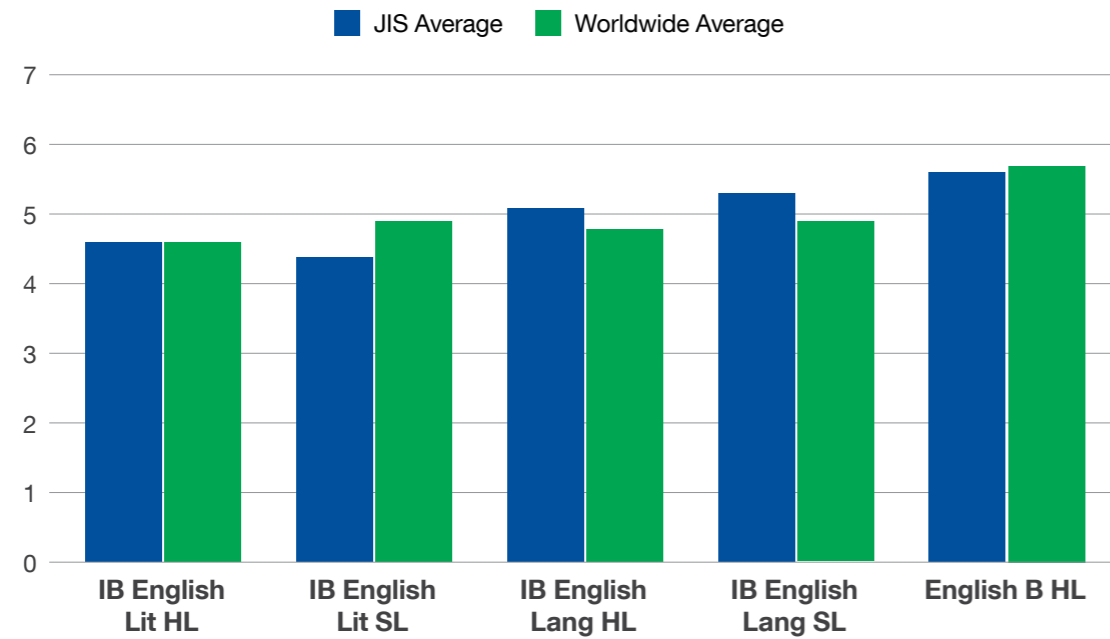
● JIS Diploma Only

G11/12 10 students  
**10/427 = 2%**

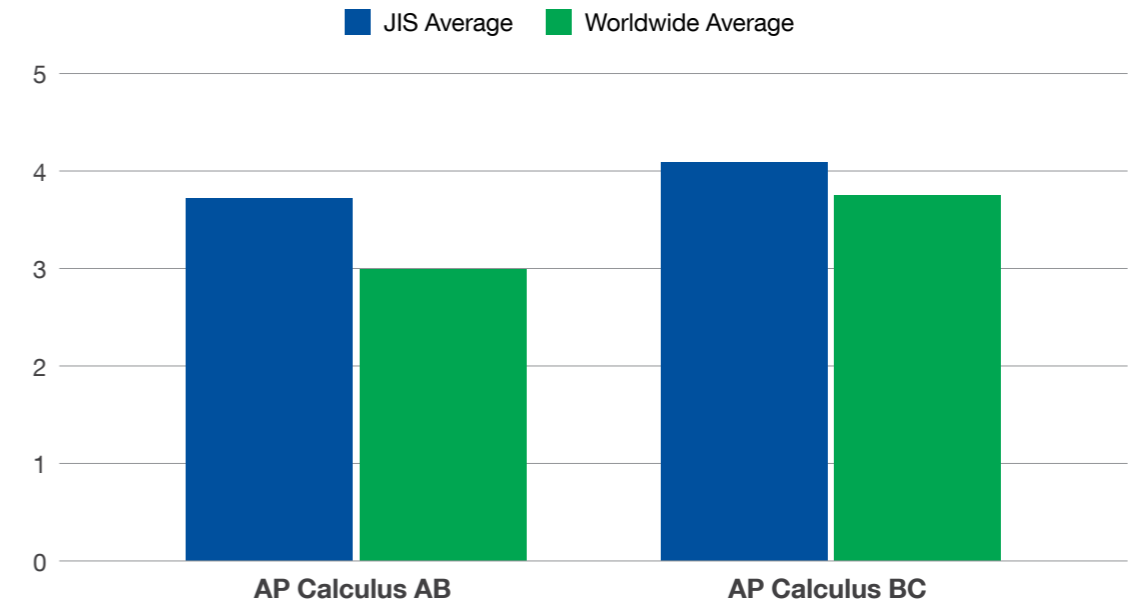
### IB Math Scores



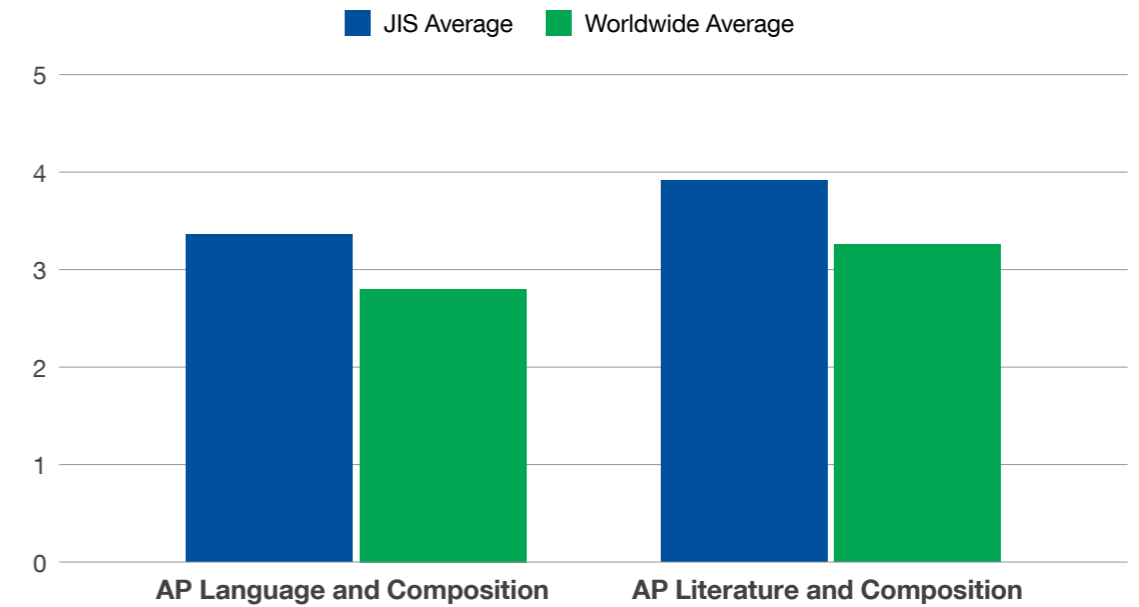
### IB English Scores



### AP Math Scores



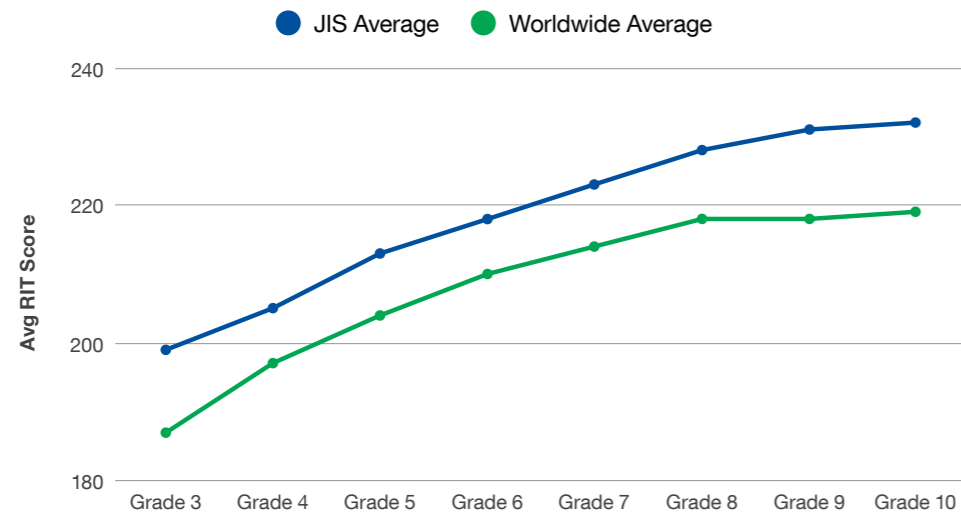
### AP English Scores



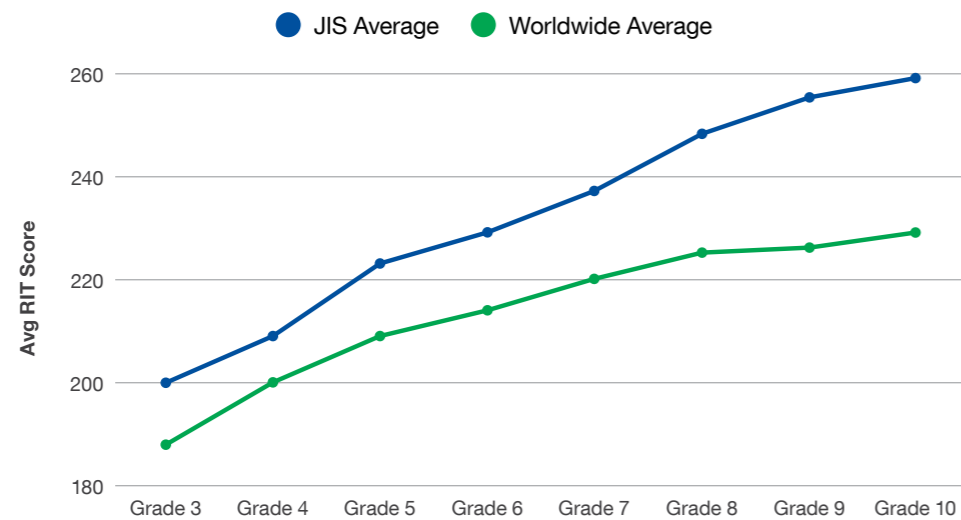
# Measure of Academic Progress (MAP) Test Results

The following data shows where JIS students' performance ranks compared to students around the world taking the MAP test.

**Fall 2023 Map Scores - Reading**



**Fall 2023 Map Scores - Mathematics**



# Social-Emotional Learning

Our commitment to student wellness is supported by our comprehensive Social-Emotional Learning (SEL) efforts across all divisions.

## Early Years and Elementary School

This year, we have implemented a dedicated schedule to ensure focused time for morning meetings, a crucial component of our social-emotional learning (SEL) initiative. In addition, we have created a comprehensive scope and sequence document to guide morning meetings across all homeroom classes, spanning from Early Years to Grade 5. The dedicated efforts of our Elementary School committee have been instrumental in crafting engaging lessons and building valuable resources to support this important program. We look forward to further enriching the social and emotional development of our students in the coming months.

## Middle School

JIS Middle School has been actively involved in SEL. Following a series of training sessions, we have started an Open Session in Advisory, which helps students build empathy and receive support from peers concerning their challenges and even celebrations. We have mapped our Advisory curriculum to align with standards from the Institute for Social and Emotional Learning (IFSEL), and teachers have refined our advisory engagements to reflect this work. In addition, we have continued to use our quarterly student well-being survey to inform our Advisory Planning and our Health Curriculum. We conducted a schoolwide healthy sleep challenge with families in the last six weeks of the first quarter, which was very well-received. Finally, parenting workshops have begun to support families in raising healthy and successful adolescents.

## High School

This year, the High School Grade Level Coordinators have been working on mapping the Student Learning and Advisory (SLA) curriculum to align with the Collaborative for Academic, Social, and Emotional Learning (CASEL) standards. We also held our first parent workshop on SEL and hope to continue more in the future based on parent interest and student needs. In addition, all advisors have received training with SEA Change on facilitating SLA experiences to foster belonging and trust within the classroom. This is a major shift in how SLA is implemented and has resulted in more engagement by students and teachers alike. SLA teachers and Grade-Level Coordinators are also reviewing the SLA purpose and vision, which will be aligned with the schoolwide SEL purpose and vision. This will help to generate consensus and ownership of the direction of the SLA program.



## Visiting Scholars and Experts

Over the course of the school year, our students, teachers, and parents have access to workshops and discussions with world-renowned education experts. From learning about how to use artificial intelligence responsibly to reframing how science is taught, the wealth of knowledge shared is one of the many assets that sets JIS apart from other schools.

- Michal Kosinsky, Artificial Intelligence
- Ellen Mahoney, Social Emotional Learning (High School)
- Paul Andersen, Science
- Nick Haisman-Smith, Social Emotional Learning (Elementary and Middle School)
- Matt Glover, Elementary Literacy
- Jon Nordmeyer, English Language Acquisition
- Kelly Armitage, Leadership Training
- Dr. Sean Truman, School Culture and Mental Health Awareness



# Indonesian Education Program

## Curriculum Update

JIS has become a role model for both Satuan Pendidikan Kerjasama (SPK), or Joint Cooperation Schools, and national schools as a pilot school for some of the government's new programs. We also developed a partnership with the Ministry of Education's (MoE) Language Development and Fostering Agency (Badan Bahasa) for our Bahasa Indonesia curriculum for expatriate students.

The MoE plans to introduce a new regulation concerning the national Kurikulum Merdeka (Freedom Curriculum) for SPK schools in December of this year. JIS will wait for the policy's official release to implement three mandatory lessons into the Elementary, Middle, and High School programs in the 2024 - 2025 academic year.

## SPK Collaboration

JIS is a participant of the Jakarta Education Agency's Sekolah Komunitas (Community School) program with state high schools SMAN 108 Jakarta and SMA Triguna Jakarta, and state junior high schools SMPN 235 Jakarta and SMP Strada. Activities include student exchanges, book donation drives, and peer-to-peer training workshops.



## National Assessment

45 JIS Middle and High School students currently take part in Computer-Based National Assessments (ANBK). As yet, we do not have enough eligible students from Pattimura (PEL) and Pondok Indah (PIE) to meet the government's requirements for such assessments to be conducted in the Elementary School. The ANBK is for Indonesian nationals only.

## Achievement

Two JIS High School students representing Jakarta won the bronze medal in the 2023 National Science Olympiad. This is the second time a JIS participant has been recognized in the annual competition since 2018, when our student won gold.



# Student Support Services

## Inclusion Philosophy

At JIS, inclusion is a commitment to welcoming, embracing, valuing, and educating a diverse range of learners. We believe diversity enriches our community and creates a learning environment that reflects the natural complexity of our world. Inclusion fosters opportunities for all members of our community to grow and thrive. As a community, we develop empathy, compassion, and an evolving perspective as we learn alongside others with different backgrounds and abilities.

## Inclusion at JIS

In the general education program, JIS can offer places at each grade level to a limited number of students who require support services. Areas of support include speech and language services (Elementary and Middle School only), motor therapy (Elementary School only), academic support, classroom guidance, and individual counseling.

The JIS Learning Center (JLC) can support students with moderate to significant cognitive needs and global developmental delays through an individualized curriculum that includes modified academic instruction in areas such as reading, writing, and mathematics, as well as additional instruction in adaptive and daily living skills, social skills, and building independence. Based on each student's Individualized Learning Plan (ILP), students are supported through academic interventions, motor development therapy, social skills training, and speech/language therapy.

## English as an Additional Language

The English as an Additional Language (EAL) program focuses on developing social and academic language proficiency through research-informed pedagogy and differentiated instruction. The school is committed to building inclusive and supportive learning environments that value and celebrate our community's cultural and linguistic diversity. Through strategic language support, authentic language experiences and ongoing monitoring of progress, teachers empower multilingual students to become confident and fluent communicators.

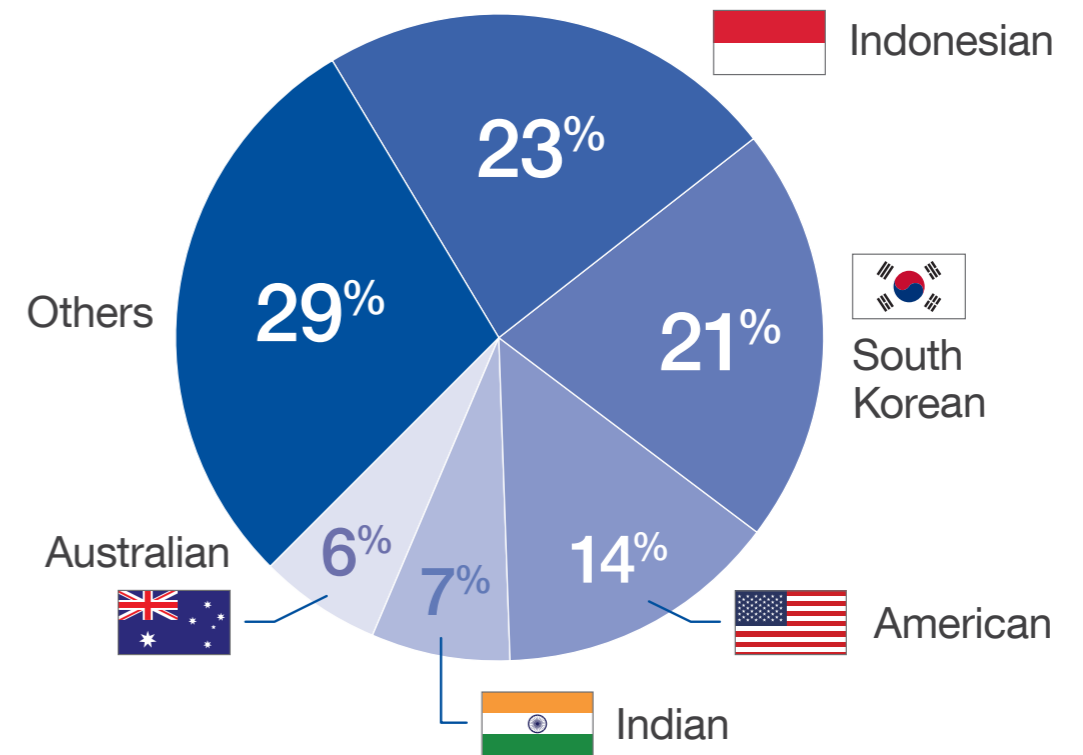
While there are no proficiency requirements to join, students applying for Grades 6 to 10 must demonstrate that they will achieve a level of competency and proficiency in English prior to Grade 11. EAL learners are supported through in-class small support such as differentiated teaching or co-taught classes, or via pull-out group and individual instruction.

# Student Community

Our students represent over 60 countries, which makes JIS the most diverse school in Indonesia.

2023 - 2024  
Enrollment  
**2160+**

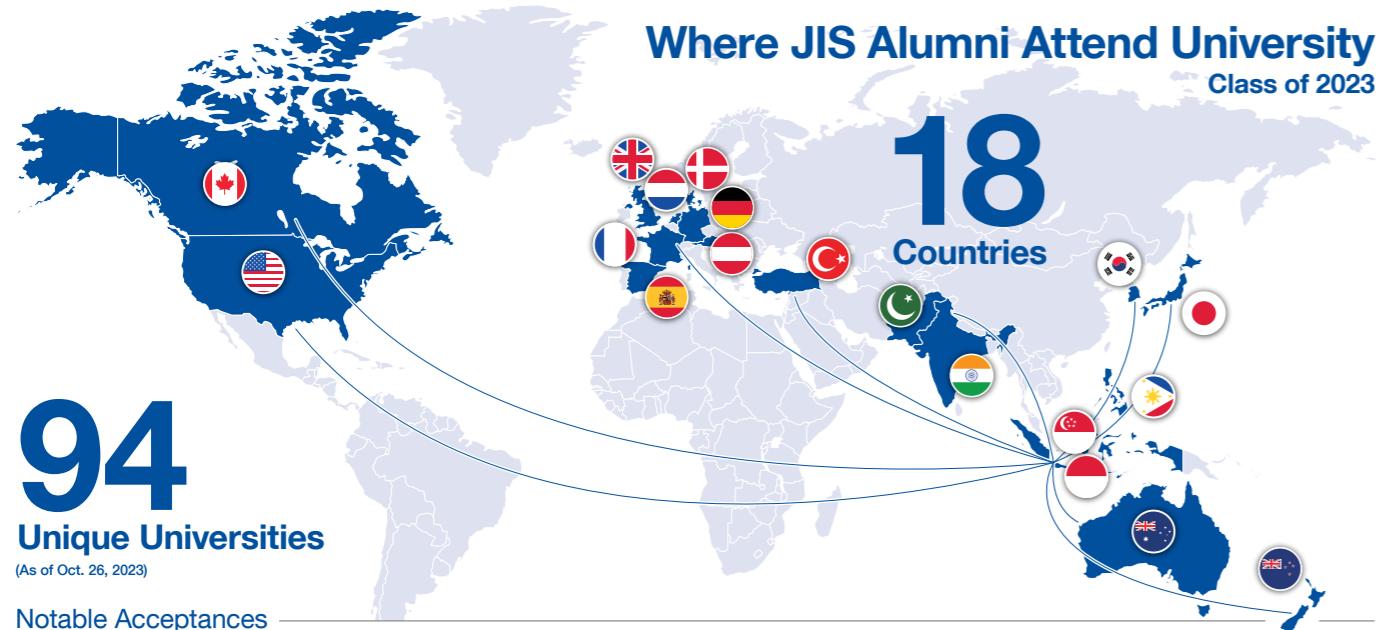
## Nationalities





# Beyond JIS

JIS graduates have been accepted into phenomenal colleges and universities around the world.



Notable Acceptances



## Class of 2023 & 2024 University Matriculations

(Based on student reported data)

- AUSTRALIA**
  - Monash University
  - University of Melbourne
  - University of Sydney
- AUSTRIA**
  - Sigmund Freud University
- BELGIUM**
  - Katholieke Universiteit Leuven
  - Universit  Libre de Bruxelles
- CANADA**
  - McGill University
  - Ontario Tech university
  - Queen's University
  - Toronto Metropolitan University
  - Trent University
  - University of British Columbia
  - University of Toronto
  - University of Waterloo
  - Western University
- FRANCE**
  - ESSEC Business School
  - Sorbonne University
- GERMANY**
  - University of Targu Mures Medical Campus
- HONG KONG SAR**
  - The Hong Kong Polytechnic University
- INDONESIA**
  - Airlangga University
  - Bandung Institute of Technology
  - Binus University
  - Sampoerna University
  - University of Indonesia
- IRELAND**
  - Trinity College Dublin
- JAPAN**
  - Sophia University
  - Waseda University
  - Yokohama National University
- NETHERLANDS**
  - Amsterdam Fashion Academy
  - Amsterdam University of Applied Sciences
  - INHOLLAND University of Applied Sciences
  - Leiden University
  - Maastricht University
  - Technical University of Delft
  - University of Amsterdam
  - University of Applied Sciences Utrecht
  - University of Groningen
  - Utrecht University
  - Willem de Kooning Academy
- NEW ZEALAND**
  - The University of Waikato
- PHILIPPINES**
  - De La Salle College of Saint Benilde
  - University of Asia and the Pacific
- SINGAPORE**
  - ESSEC Asia Pacific
- SOUTH KOREA**
  - Chung-Ang University
  - Handong Global University
  - Korea University
  - Seoul National University
  - Sogang University
  - Sungkyunkwan University (SKKU)
  - Yonsei University
- SPAIN**
  - Saint Louis University
- SWITZERLAND**
  - Ecole H teliti re de Lausanne
  - Les Roches Schools of Hotel Management
- T RKIYE**
  - Yildiz Technical University
- UNITED KINGDOM**
  - Bristol, University of the West of England
  - City, University of London
  - Durham University
  - Hartpury University
  - Hult International Business School
  - Imperial College London
  - King's College London
  - London School of Economics and Political Science
  - SOAS University of London
  - UCL (University College London)
  - University of Bath
  - University of Cambridge
  - University of Dundee
  - University of Edinburgh
  - University of Exeter
  - University of Leeds
  - University of Manchester
  - University of Nottingham
  - University of Southampton
  - University of the Arts London
- UNITED STATES**
  - Arizona State University
  - Babson College
  - Barnard College
  - Bentley University
  - Boston College
  - Boston University
  - Brandeis University
  - Brown University
  - Carnegie Mellon University
  - Central College
  - Columbia University
  - Cornell University
  - Dartmouth College
  - DePauw University
  - DigiPen Institute of Technology
  - Drexel University
  - Duke University
  - Emerson College
  - Emory University
  - Fordham University
  - George Mason University
  - Georgetown University
  - Grinnell College
  - Indiana University-Bloomington
  - Iowa State University
  - Ithaca College
  - Los Angeles College of Music
  - Loyola Marymount University
  - Marquette University
  - Mt San Jacinto Community College
  - New York Film Academy
  - New York University
  - Northeastern University
  - Northwestern University
  - Ohio State University
  - Oregon State University
  - Parsons School of Design
  - Pepperdine University
  - Pratt Institute
  - Princeton University
  - Purdue University
  - Rensselaer Polytechnic Institute
  - Rhode Island School of Design
  - Santa Monica College
  - Sarah Lawrence College
  - Savannah College of Art and Design
  - School of Visual Arts
  - Soka University of America
  - Southern California Institute of Architecture
  - Stanford University
  - Suffolk University
  - Swarthmore College
  - Tennessee Technological University
  - Texas A & M University
  - Texas Southern University
  - The College of Wooster
  - The New School
  - The University of Texas at Arlington
  - The University of Texas at Austin
  - Trinity University
  - Tufts University
  - University of California-Berkeley
  - University of California-Davis
  - University of California-Irvine
  - University of California-Los Angeles
  - University of California-Riverside
  - University of California-Santa Barbara
  - University of California-Santa Cruz
  - University of Florida
  - University of Illinois Urbana-Champaign
  - University of Massachusetts-Boston
  - University of Michigan-Ann Arbor
  - University of North Carolina at Chapel Hill
  - University of North Carolina at Charlotte
  - University of Oregon
  - University of Pennsylvania
  - University of Puget Sound
  - University of Rochester
  - University of Southern California
  - University of Utah
  - University of Virginia
  - University of Washington
  - Utah Tech University
  - Virginia Tech
  - Wellesley College
  - Western Washington University
  - William & Mary
  - Worcester Polytechnic Institute
  - Yale University





# Financial Information

JIS is a not-for-profit foundation dedicated to advancing our vision and mission, which is to provide the best education in Indonesia to be Best *for* the World. In alignment with our commitment to excellence, we reinvest all revenue back into the school to ensure that our students receive the highest quality education.

## Investing in People and Resources

To deliver on our educational promise, JIS continues to invest in highly qualified administrators, faculty, and staff. Our commitment to excellence extends to providing top-of-the-class instructional resources, world-class technology, and the construction, renovation, and maintenance of top-tier facilities.

## Voluntary Leadership and Governance

JIS is guided by a dedicated Board of Trustees (BOT) who serve voluntarily, receiving no financial compensation for their time and effort. Current parents automatically become members of the school and participate in its governance by electing the school board, which oversees the Head of School. The Board of Management works under the Head of School's direction to implement board decisions and ensure efficient and responsible resource management.

## Financial Accountability and Transparency

We uphold high standards of financial accountability and transparency in all school operations. The audit process, conducted by international auditing firm Klynveld Peat Marwick Goerdeler (KPMG), has yielded positive results, reinforcing our commitment to financial integrity.

## A Year of Recovery and Resilience

The 2022 - 2023 school year was marked by our collective efforts to recover from the Covid-19 pandemic. The audited financial results for this year compare favorably to the budget approved by the board in March 2022.

## Favorable Revenues and Expenses

Our revenue outperformed the budget, primarily due to higher-than-expected student enrollment as we cautiously navigated the recovery from the pandemic. Additionally, our ability to manage operating expenses efficiently allowed us to address inflation increases and unexpected tax expenses resulting from legislative changes. Consequently, we achieved a total surplus of IDR 18 billion, a significant improvement over the previous year.

## Sustaining Financial Stability

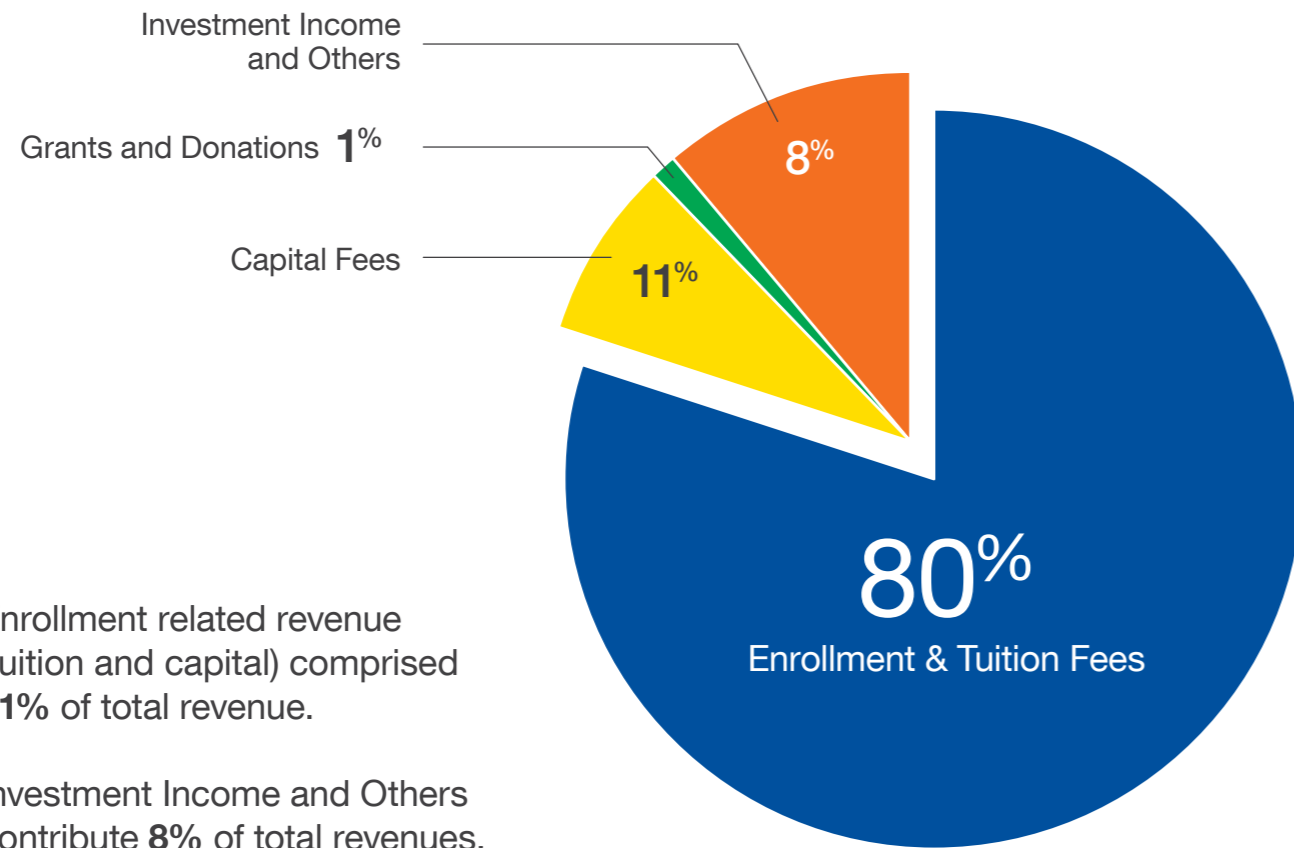
In line with our financial policy, the Board aims to maintain operating reserves of at least 25% of the operating budget for contingencies. We are pleased to report that JIS's current reserve exceeds this target, ensuring our ability to weather any unforeseen challenges.

## Looking Ahead: A Sound Financial Position

Through diligent multi year planning, we remain committed to providing top-notch facilities and resources to deliver the best-in-class education for our students. JIS continues to stand in a sound financial position, ready to support our mission of excellence in education.



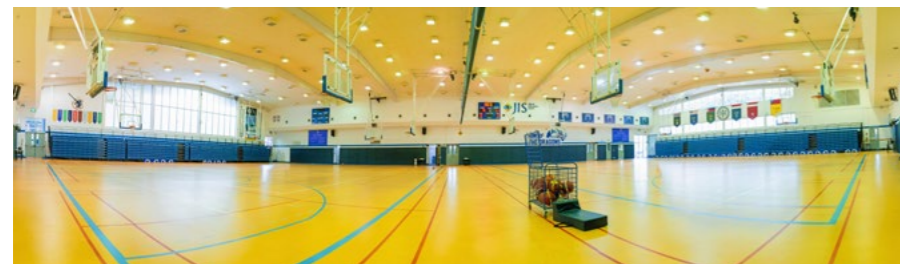
## SY 2022 - 2023 Schoolwide Revenue



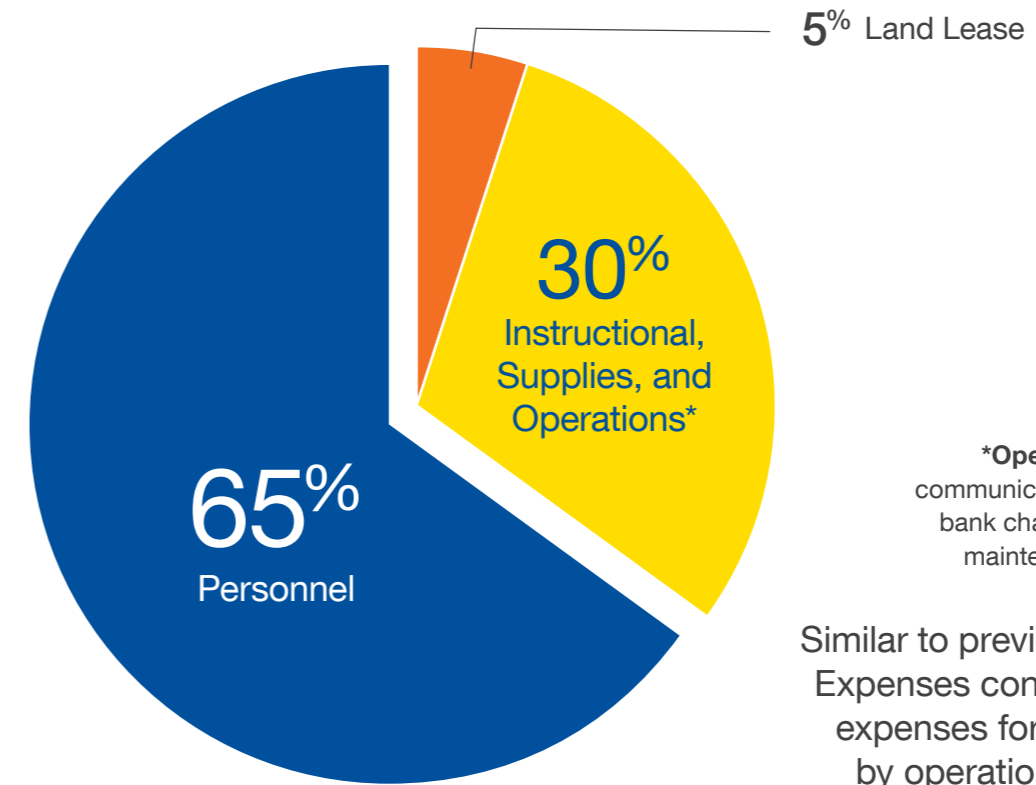
Enrollment related revenue (tuition and capital) comprised **91%** of total revenue.

Investment Income and Others contribute **8%** of total revenues.

Total Revenues  
IDR 1,076 billion



## SY 2022 - 2023 Schoolwide Expenses



**\*Operations:** internet, marketing, communications, softwares, insurance, bank charges, legal, permits, utilities, maintenance, and others expenses

Similar to previous years, Personnel Expenses continue to be the major expenses for the school, followed by operations-related expenses.

Total Expenses  
IDR 1,029 billion

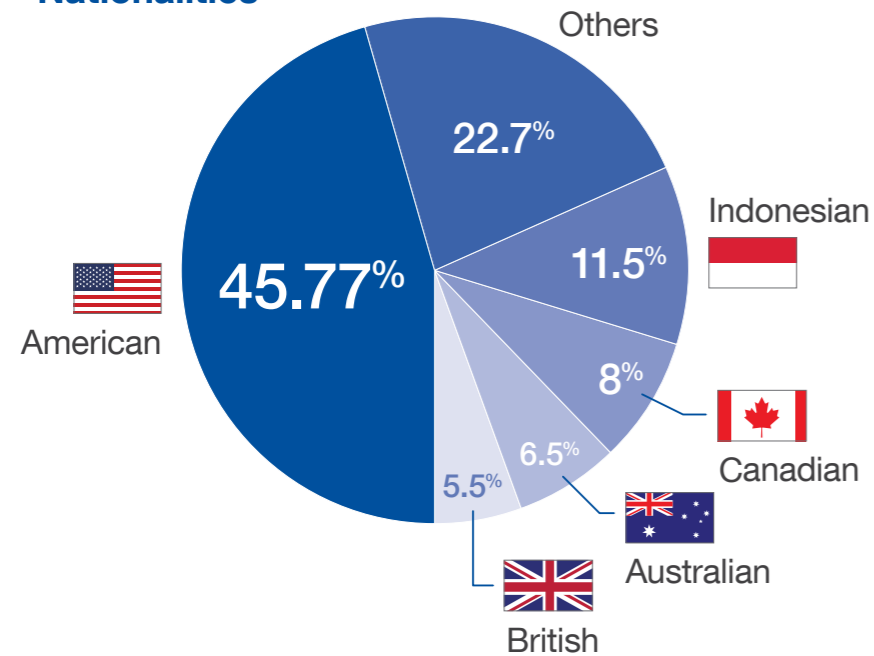


# JIS Faculty

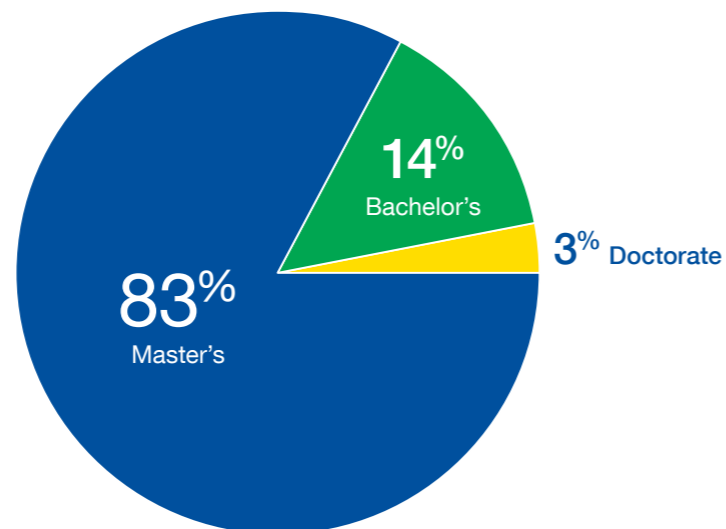
We take pride in our exceptional faculty, a globally diverse team of educators handpicked for their commitment to education.

Our educators are not only teachers; they are specialists in their fields and play a vital role at JIS. They aim to go beyond traditional teaching, serving as influential mentors who help our students navigate their academic, extracurricular, and social experiences. Our faculty is the core of our institution, and their expertise is our primary asset.

## Nationalities



## Degrees Held by JIS Faculty



# Advancing JIS

JIS has a passionate and powerful community that has supported the school for more than seven decades.

Our new Advancement Program values connection above all else. Bound by a shared passion to be Best for the World and through intentional local and global outreach, we will amplify and ignite Dragon Pride, leveraging meaningful collaboration and powerful partnerships to accelerate our dreams and provide a secure, sustainable future for our school.

Advancement is a central pillar of the JIS Strategic Plan, our future-facing roadmap for the school's development. The new Advancement Program (2023/24) is all about supporting the creation of that "future of choice" and fulfilling our dreams as educators for our students. The Advancement Office supports Alumni relations and institutional fundraising with both distinct and inter-connected programming.

Advancement will explore the ways in which JIS, a not-for-profit organization that is dependent almost entirely upon tuition for revenue, can fund and develop its programs through community partnerships and institutional fundraising.

JIS enjoys a long history of philanthropy and giving back to our community, including **JIS Peduli** supporting service learning for the last 12 years, and more recently, the launch of our **Bhinneka Tunggal Ika (BTI) Scholarship Program** and the **Innovative Schools Programme (ISP)**. Parent volunteer organizations have also long supported school programs, amplified student experiences, and provided outstanding community events with unwavering commitment.



The JIS chapter of the **Innovative Schools Programme (ISP)** was established in 2013 in partnership with the non-profit foundation Yayasan Emmanuel, whose founder is a JIS Alumnus. ISP aims to improve the quality of education and educational experiences of students in West Java by enhancing the teaching skills of host country elementary school educators.

A true community effort, ISP is a nine-month program that includes training sessions facilitated by JIS faculty members. The latest ISP training was on Saturday, November 4, when five JIS teachers and members of the school's Indonesian Education Program (IEP) led a workshop center on Developing Thinking Skills for 60 Indonesian teachers. Such training sessions are typically six hours long and take place 10 times a year. At the end of the program, participants receive a certificate and leave with valuable skills connected to social-emotional learning, classroom management, lesson-plan development, and a host of instructional strategies.



# JIS Peduli

**JIS Peduli** is the schoolwide service arm of JIS, providing organizational and financial support for disaster relief and outreach programs initiated by students and supported by parents, teachers, and staff members. Our aim is to strengthen our ties to Indonesia through service.

JIS Peduli is committed to helping communities and environmental concerns in times of need by working closely with NGOs, orphanages, local schools, and various social organizations.

### Our service partners include:

- Bandungwangi
- SLB Bhakti Luhur
- Candradimuka - Special Needs School
- Design as Generator
- GK (Gerakan Kepedulian) Indonesia
- Habitat for Humanity Indonesia
- Indonesia Indah Foundation
- International Organization for Migrants
- Jakarta Animal Aid Network
- Lestari Sayang Anak
- Madrasah Ibtidaiyah Unwanul Huda
- Panti Asuhan Abigail
- Panti Asuhan Akhiruz Zaman (House of Hope)
- Panti Asuhan Al-Khairiyah
- Panti Asuhan Kasih Mandiri Bersinar
- Rachel House
- Rekosistem
- Roshan Learning Center
- Rumah Belajar Mahkota Kasih Insani
- Ronald McDonald Charity House
- Sahabat Laut Indonesia
- Sanggar Batik Betawi Terogong
- Sekolah Muslim Asia Afrika
- Sekolah Insan Anugerah
- Sekolah Kami
- Sekolah Sabit
- SLBN 01
- SLB Ulaka Penca
- The Learning Farm
- XSPProject
- Yayasan Amal Mulia
- Yayasan Balita Sehat



- Yayasan Dinamika Indonesia
- Yayasan Emmanuel
- Yayasan Hidung Merah
- Yayasan Kampung Kids
- Yayasan Kampus Diakonia Modern
- Yayasan Kasih Anak Kanker Indonesia
- Yayasan Mary Jane
- Yayasan Pendidikan Islam Al Hurriyah
- Yayasan Puspita
- Yayasan Usaha Mulia

Jakarta Intercultural School  
**Bhinneka Tunggal Ika**  
 Scholarship

Since its inception in 2018, the **JIS Bhinneka Tunggal Ika (BTI) Scholarship** allows us to provide a world-class education to Indonesian students regardless of financial means. As of this year, JIS has welcomed 13 BTI Scholars to the community, with seven students currently enrolled. This opportunity is open to Indonesian students in Grades 8-10 who reside with their parents or legal guardian in Jakarta, and are currently enrolled in state schools across Greater Jakarta. The scholarships are fully funded from the grade of entry until graduation. JIS is thankful to BlueBird Group for their sponsorship.

The JIS BTI program is highly competitive with a four-month-long application process filled with testing, activities, interviews, and home visits. The school received over 150 applications for 2023/24 enrollment, and awarded two scholarships.



In addition to these inspirational programs, we will work with the JIS community to identify urgent needs on campus that we can address together through a community fundraising campaign, and provide the opportunity for everyone to participate in creating solutions together!

Our **People of PEL Project** is already taking the opportunity of the campus construction at Pattimura to celebrate seven decades of JIS at the forefront of international education with our Alumni, while also providing the chance for community members to take their own place in history with our Wall of Recognition! The funds raised will support the programs that make JIS the school of choice not only in Jakarta but also in the region. Thank you to the 48 generous families and Alumni who have already reserved their place in history!



Institutional philanthropy at JIS encompasses the giving of time, skills, financial support, and other resources by members of our community to support the school's strategic goals. Every contribution counts and we celebrate our shared commitment through the impact we make. Together.

**THANK YOU!**

**20,134**

global alumni connections with former students, parents, faculty, and staff  
**on 5 continents**

**301**

alumni attended our **4 reunions** in Jakarta and the United States

**6**

official JIS **Alumni** events planned for 2023/24 in Jakarta and the US, including a service event in partnership with Habitat for Humanity our first **Dragon Build!**

**242**

**alumni** have booked to visit JIS since we opened our doors post-pandemic!

**55**

**Career Day** speakers and

**49**

**internship** opportunities offered by alumni for the 2023 High School pilot program

**39**

**Bricks** and

**46**

**Name Places** reserved by

**48**

**families and alumni** at the launch events for **People of PEL** in May, **with IDR 436m** raised for our future school programs (*donations and pledges*)

Opportunities to “take your place in history and help build the future” will continue throughout the school year and more details will be shared about the programs supported by our generous donors.

**Questions?**

Please contact our **Chief Advancement Officer, Emma Silva:**  
 esilva@jisedu.or.id

# Facilities

## Five-Year Plan

The school has worked with talented architects from all over the world in order to create a learning environment equipped with world-class facilities. To ensure that our students continue to have access to state-of-the-art learning spaces and tools, we have implemented a five-year plan that covers evaluating the quality of all facilities across our campuses; enhancing athletics resources such as the turf, track, pools, and changing rooms; and updating some classroom spaces.

## Pattimura Elementary

As JIS's first official campus, Pattimura Elementary (PEL) holds a special place in our school's history and the hearts of the countless students, teachers, and staff who treasure the moments of growth they experienced underneath the protective branches of the Pattimura Tree. PEL is also home to our inaugural JIS Learning Center (JLC) for children with moderate-to-severe learning needs, reaffirming yet again our position as a leading force in inclusive, student-focused education.

We are proud to not only continue but also strengthen PEL's commitment to transformative teaching and learning with a dynamic redevelopment project that is already underway. The plan includes both new, purpose-built facilities and renovated areas to facilitate expanded academic and cocurricular programs for more PEL families to enjoy. From multipurpose spaces and a leading-edge science lab, to additional interactive classrooms and an indoor/outdoor play area, each was carefully designed to provide only the best, most effective learning opportunities for our elementary-aged Dragons. Every new facility will also boast green features to prioritize the health and safety of the entire PEL community while also reducing our carbon footprint and increasing resource efficiency.

Construction began toward the end of the 2022 - 2023 academic year with the clearing of several buildings — a poignant, bittersweet moment of saying goodbye to familiar spaces, but also celebrating the next exciting phase of PEL's story as a school and a community. Development will continue over the next two years, completing just in time for the start of the new academic year in August 2025 and JIS's 75th anniversary.

As we embark on this transformative journey together, we are not just constructing buildings; we are shaping the future of PEL.



Courtesy of Cabinet Secretariat of the Republic of Indonesia

# The Potential Future



On November 3, 2023, a delegation of JIS leaders and board members attended the groundbreaking ceremonies for companies and organizations who are establishing a presence in the proposed new Capital City of Nusantara (IKN), which included Nusantara Intercultural School (NIS). We were privileged to witness Indonesian history in the making, and remain dedicated to providing education to Indonesian and expatriate families.

UN DAY  
2023  
United Nations

UN DAY  
2023  
The United Nations

IS





Jakarta Intercultural School

Learning in Indonesia to be best *for* the world

---

[www.jisedu.or.id](http://www.jisedu.or.id)

 Jakarta Intercultural School

 Jakarta Intercultural School

 @JISofficial

 Jakarta Intercultural School

