

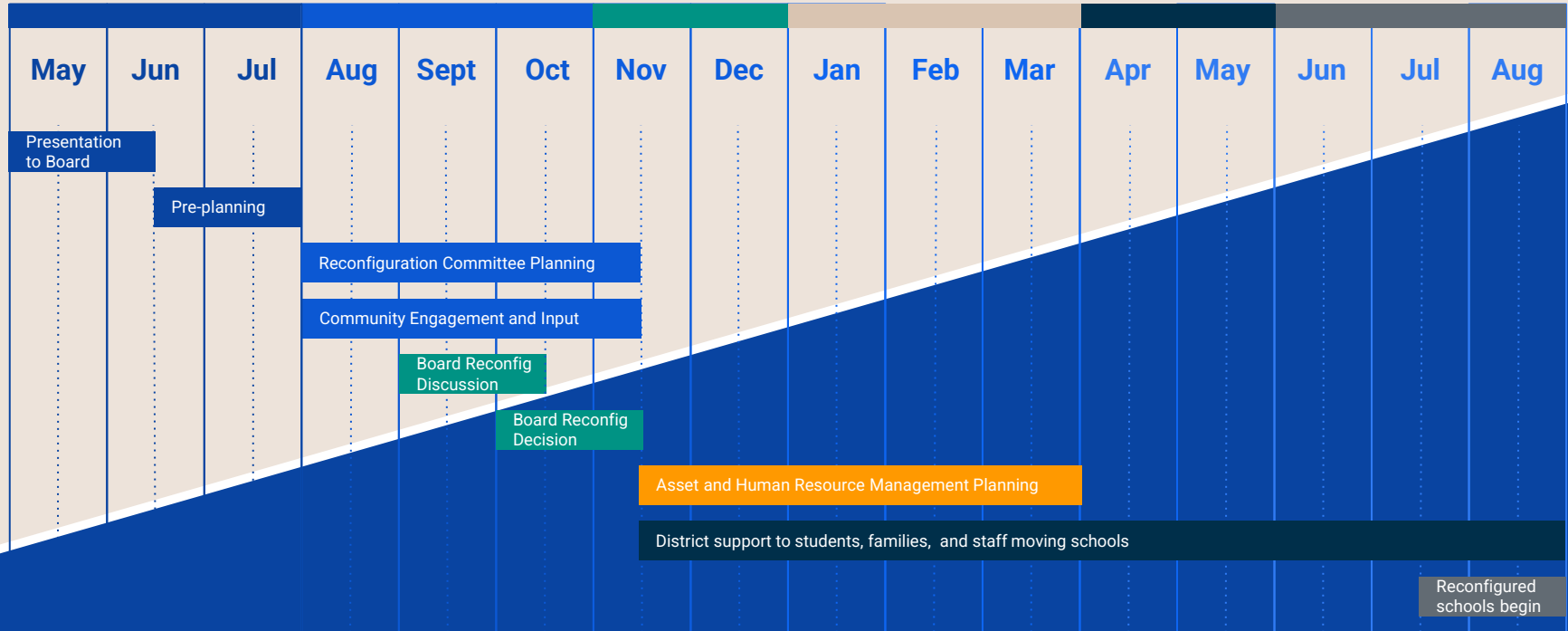
# Reconfiguration Proposal Update

Regular Board Meeting  
November 9, 2023





# Process Timeline 2023-2024



# AB 1912



AB 1912 is a requirement for Districts in financial distress and best practice for Districts not in financial distress.

- Equity Impact Analysis Report
  - Published October 9, 2023 (Draft 1)
  - Published November 6, 2023 (Final Draft)
- Public Hearing
  - October 12, 2023
  - October 26, 2023
  - November 9, 2023

Metrics:

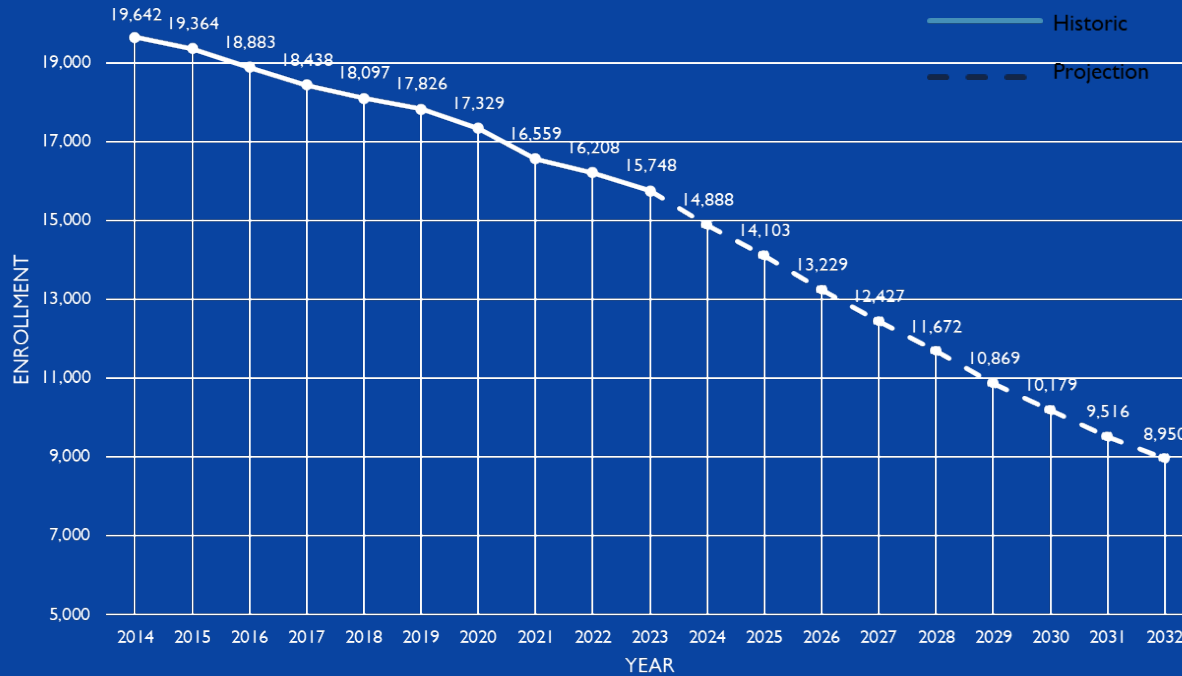
- A. The condition of a school facility
- B. The operating cost of a school
- C. The capacity of a school to accommodate excess pupils.
- D. Special programs
- E. Environmental factors
- F. Balance of pupil demographics
- G. Transportation needs of pupils
- H. Aesthetics and the opportunity for blight
- I. Impact on feeder school attendance patterns



# How did we get here?

- Enrollment Decline of 1980s led to first school closures
- Enrollment growth in the 1990s with a high in 2004 with 25,500 students
- 2010 Facilities Committee made recommendations for school closures
- October 2017 - Board discussion regarding School Closures and Reconfiguration Committee formed

# HLPUSD 2014–2025 Historic\* and Projected\*\* Enrollment



\*Historic enrollment data available at the California Department of Education “Data Quest” web site: <https://dq.cde.ca.gov/dataquest/>

\*\*Projected enrollment provided by demographer through HLPUSD

# Los Angeles USD Multi-Year Enrollment

(LAUSD School Directory: [School Directory \(lausd.net\)](https://www.lausd.net); [ed-data.org](https://ed-data.org))



Enrollment 36% Decline		2009-10	2010-11	2011-12	2012-13	2013-14
		603,814	580,238	549,067	536,890	516,995

2014-15	2015-16	2016-17	2017-18	2018-19	2019-20	2020-21	2021-22	2022-23
504,205	490,474	478,916	467,007	451,506	440,365	419,443	397,583	389,420

2013-14:  
759 Schools

26 schools closed  
since 2014

2022-23:  
733 Schools

# Los Angeles County School Closures

(CDE School Directory: <https://www.cde.ca.gov/SchoolDirectory/districtschool?allSearch=&multif=&simpleSearch=Y>)



## Local San Gabriel Districts within SY 2020-2023

Azusa Unified (18 mi from HLP): 5 (2023)

Baldwin Park Unified (7 mi from HLP): 3 (2021, 2022, 2023); 2 additional schools approved for closure

Duarte Unified: (13 mi from HLP): 1 (2022)

Mountain View Elementary (K8): (8 mi from HLP): 4 (2021)

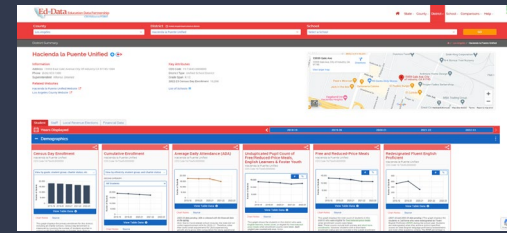
Pasadena Unified: (22 miles from HLP): 4 (2020)

Pomona Unified (14 miles from HLP) : 4 (2022)

District	School	Closed Date
Azusa Unified	Alice M. Ellington Elementary	6/9/2023
Azusa Unified	Center Middle	6/9/2023
Azusa Unified	Foothill Middle	6/8/2023
Azusa Unified	Slauson Intermediate	6/9/2023
Azusa Unified	W. R. Powell Elementary	6/9/2023
Baldwin Park Unified	Elwin Elementary	6/3/2022
Baldwin Park Unified	Pleasant View Elementary	6/9/2023
Baldwin Park Unified	Santa Fe Fundamental	6/30/2021
Claremont Unified	Community Day	7/24/2020
Duarte Unified	Andres Duarte Arts Academy (PK-8)	5/27/2022
El Rancho Unified	Elen Ochoa Prep Academy	6/10/2022
Los Angeles Unified	Sun Valley High	6/30/2020
Los Angeles Unified	Alliance College-Ready Middle Academy 5	6/30/2021
Los Angeles Unified	Animo College Preparatory Academy	6/30/2020
Los Angeles Unified	Alliance Alice M. Baxter College-Ready High	6/30/2021
Los Angeles Unified	The City	6/30/2023
Los Angeles Unified	Academy of Media Arts	6/30/2023
Los Angeles Unified	Calliope Academy	8/17/2021
Los Angeles Unified	Frank Lanterman	6/30/2020
Los Angeles Unified	West Hollywood Opportunity	6/30/2021
Los Angeles Unified	East Los Angeles Skills Center	6/30/2020
Los Angeles Unified	Selma Avenue Elementary	6/30/2021
Lynwood Unified	Lynwood Middle	6/16/2021
Mountain View Elementary	Charles T. Kranz Intermediate	6/30/2021
Mountain View Elementary	Cogswell Elementary	6/30/2021
Mountain View Elementary	Jerry Voorhis Elementary	6/30/2021
Mountain View Elementary	Alfred S. Madrid Middle	6/30/2021
Norwalk-La Mirada Unified	Cesar Chavez Elementary	6/30/2021
Norwalk-La Mirada Unified	Los Coyotes Middle	6/30/2021
Pasadena Unified	Franklin Elementary	5/28/2020
Pasadena Unified	Jefferson Elementary	5/28/2020
Pasadena Unified	Roosevelt Elementary	5/28/2020
Pasadena Unified	Woodrow Wilson Middle	5/28/2020
Pomona Unified	Diamond Point Elementary	6/30/2022
Pomona Unified	Montvue Elementary	6/30/2022
Pomona Unified	Palomares Academy of Health Science	6/30/2022
Pomona Unified	San Antonio Elementary	6/30/2023
South Whittier Elementary	Monte Vista	6/4/2021
William S. Hart Union High	Sequoia	6/30/2020
Compton Unified	Roosevelt Middle	6/30/2020
Hacienda la Puente Unified	Temple Academy	6/30/2021
Alhambra Unified	Century High	6/30/2023
Alhambra Unified	Independence High (Alternative)	6/30/2023

# 2022-23 Surrounding District Enrollment and Schools

(ed-data.org)



District	Enrollment	Number of Schools	Enrollment to School Ratio
Walnut Valley Unified	13,494	15	900
Covina Unified	11,130	17	655
Mountain View	4,944	8	618
Pasadena Unified	14,152	23	615
Baldwin Park Unified	10,291	18	572
Rowland Unified	11,904	21	567
West Covina Unified	7,965	15	531
Los Angeles Unified	389,420	733	531
Hacienda La Puente	16,206	31	523
Bassett Unified	2,946	7	421



# Why Reconfigure

## Strengthen quality and number of program offerings to students

- Enrichment and intervention
- Visual and performing arts
- More electives, physical education, and athletic programs for all 6th grade students

## Reduce strain on staff

- Increased professional collaboration
- More staff to share additional assignments

## Reduce the frequency that a student may be assigned to a combo class



# Proposed Reconfiguration Plan



## Los Altos Quad

- ❖ Move Los Robles students to Palm Elementary

## La Puente Quad

- ❖ Move Sunset students to Lassalette
- ❖ K-6 schools become K-5 and 6th grade students go to Sparks Middle School
  - California
  - Nelson
  - Sparks El
- ❖ Lassalette becomes K-5, grades 6-8 go to Sparks Middle School
- ❖ Sparks Middle becomes a 6-8

## Workman Quad

- ❖ Move Del Valle students to Workman El
- ❖ Move Grandview K-5 students to Wing Lane
- ❖ K-6 schools become K-5 and 6th grade students go to Sierra Vista Middle School or Grandview based on current feeder pattern
  - Baldwin
  - Workman El
- ❖ Valinda becomes K-5, students grades 6-8 go to Grandview
- ❖ Sierra Vista and Grandview become 6-8

## Wilson Quad

- ❖ Move Bixby students to Cedarlane Academy

# Additional Staff and Community Input



**10/9/23** - Draft Equity Impact Analysis (EIA) Report Published

**10/12/23** - Public Hearing and Presentation of the Reconfiguration Proposal. Data Considerations slide in presentation included EIA metrics

Board provided direction to gather additional input on Reconfiguration (*10/17/23 Continuation Board Meeting*)

**10/26/23** - Public Hearing

**11/6/23**- Final EIA Report published

Principals conducted in-person staff and community input meetings between 10/25-10/31

## Engagement for schools anticipated to close or lose enrollment and GV

17	Community meetings
13	Staff meetings
603	Participants
191	Responses to Digital Survey

## Total Engagements to Date

3,218	Survey responses
830	Attendance at in-person meetings
21	In-Person meetings w/District and Principals,
	Board members
15	School Sites Hosted



# Community Input Themes

- Communication
- Timeline
- Student Achievement
- Academic Programs
- Special Education
- Safety
- Future Use of School Facilities
- Transitions
- Support for Foster Families
- Class Size

# Response to Community Input



## Communication

- Extended Outreach in response to concerns (slide 11)

## Timeline

- Multi-Decade Process (*CDE School Directory*)
  - Hillgrove (1984)
  - La Subida (1989)
  - Shadybend (2008)
  - Glenelder (2010)
  - Valley Alt Ed @ Lomitas (2010)
  - Temple Academy (2021)
- 2009-10 Facilities Advisory Committee
- 2017-18 Reconfiguration Committee
- May 2023 Board Direction to Reconvene Committee
- Backwards Planning for Fall 2024 Implementation
  - Staffing Assignments - No Layoffs
  - Facilities Preparations
  - Student and Family Services

## Future Use of School Facilities

- No sale of school properties
- District Asset Management Advisory Committee will discuss repurposing or alternative use of properties and make recommendations for Board consideration



# Response to Community Input



## Academic Programs

- Expanded access to enrichment programs and clubs
- Potential for TK dual immersion expansion
- Lower frequency of combo classes
- Course access/electives
- Increased VAPA support

## Student Achievement

- Increase program and elective offerings in grades 6-8 with qualified staff
- Increased teacher collaboration time
- Equity and efficiency of resources

## Special Education

- IEP Services follow students
- Facilitated Transitions
- Continued Services for CA Children's Services (CCS) at Sunset Elementary

## Support for Foster Families

- District Foster Liaison
- Targeted case management

## Class Size

- Class sizes and student: staff ratios (Ed. Code and Collective Bargaining Agreements)
  - TK 12:1
  - K-3 24:1 average
  - 4-8 32:1 average
- Increased Classroom Support Services

# Response to Community Input



## Safety

- Accommodations and Upgrades for Universal Access
- Partnerships with cities and county to enhance safety measures and additional staff
- Transportation (AR 3541)
- Students shall be eligible for transportation service to and from school if the distance between their school established bus stop and the school is beyond the minimum listed below:  
Kinder: 1 mile  
Grades 1-5: 1.5 miles  
Grades 6-8: 2 miles
- Del Valle ES students living within the DV attendance area will be provided transportation to Workman ES
  - Ridership evaluated annually

## Transitions

- Individualized “Concierge” services through Student and Family Services, Special Education, Facilities, Transportation
- New School Meet and Greets, Campus Tours, Family Orientations
- Academic and Social Emotional Counselor Support (E&A)
- Student Leadership Opportunities
- Site-Based Student Support Systems
- Merging schools develop together the possibilities that will arise by combining resources

# Resolutions



- 4 Resolutions to go into effect in the 2024-25 school year
- Resolutions are based on the current HLPUSD enrollment; should declining enrollment continue as projected, further school reconfiguration and consolidation will need to be implemented in the future to maximize resources to support student achievement





# Thank You

