

MIDDLE SCHOOL

CIRCLE OF SUPPORT: Academic Strength & Progress of Each Student

Sacred Heart Greenwich supports the academic success of each student through individualized and programmatic resources. Below is a guide on resources and who to contact when support is needed.

Associate Head of School for Teaching and Learning

Responsible for delivering an early education – 12th grade learning, design, pedagogy, and curriculum assessment that drives outcomes

Head of Middle School

- Responsible, with the support of the Middle School administrative team, for the overall development of students in the Middle School, including their engagement with curriculum, spiritual growth, arts, athletics and extracurriculars

- Oversees the faculty, curriculum, student assessments, and grading practices with the Department Chairs and instructional leaders

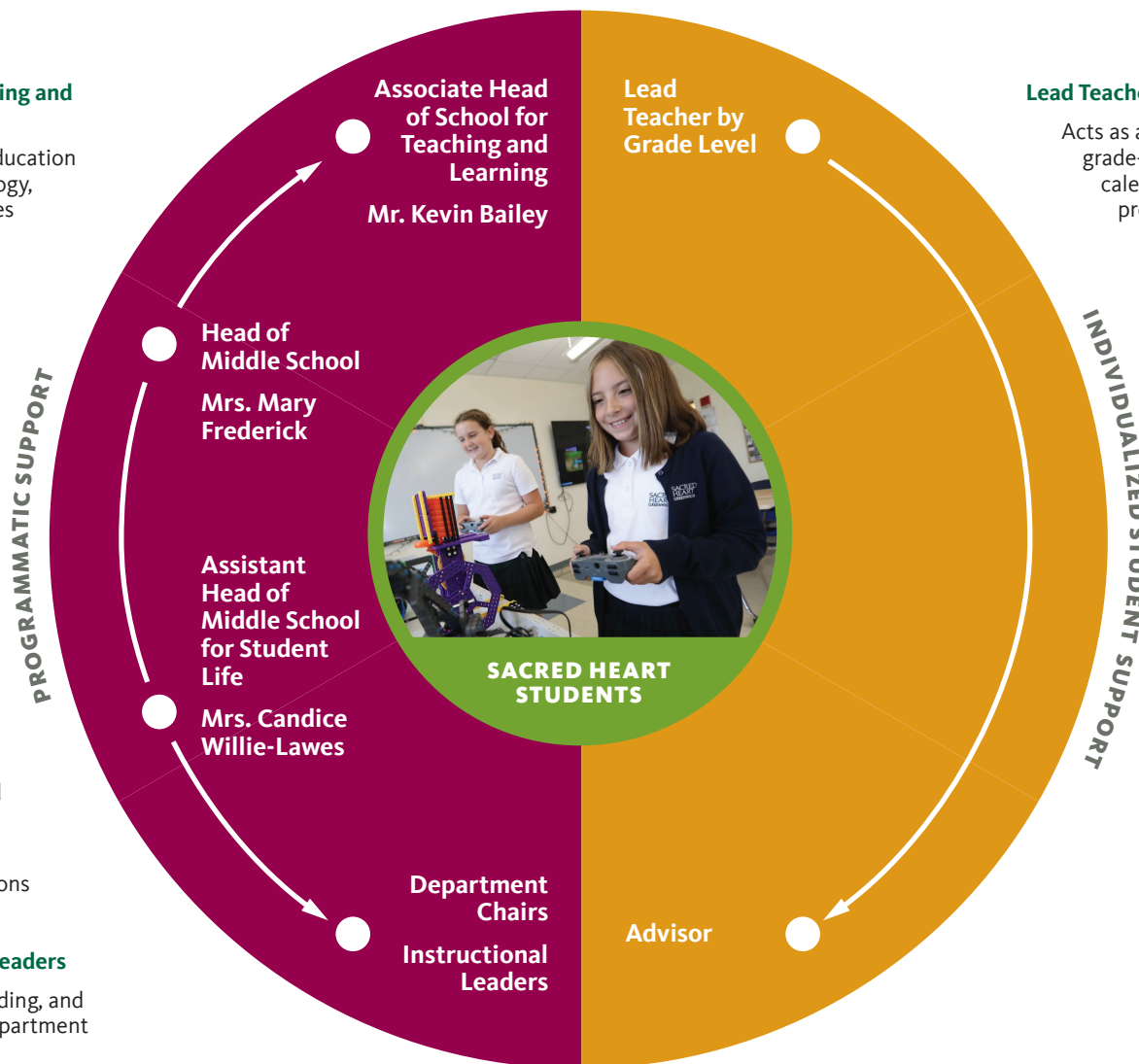
Assistant Head of Middle School for Student Life

- Oversees programs, events, and communications to foster parent and larger community partnerships that further the mission of the School

- Acts as a liaison with communications and special events teams

Department Chairs/Instructional Leaders

Oversees the faculty, curriculum, grading, and placement policies within specific department



Lead Teacher by Grade Level

Acts as a primary point of contact for all grade-level information, policies, testing calendar, class trips, and grade-wide projects

Advisor

- Acts as the primary point of contact for their advisees and parents by assisting in problem solving, celebrating successes, and bringing larger concerns to the attention of the Head of Middle School
- Helps parents understand their child's course of study each year