



# S<sup>t</sup> George's New School Gymnasium

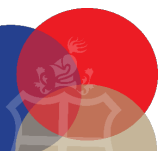
architecture  
company



The construction of the new gymnasium will take approximately 2 years

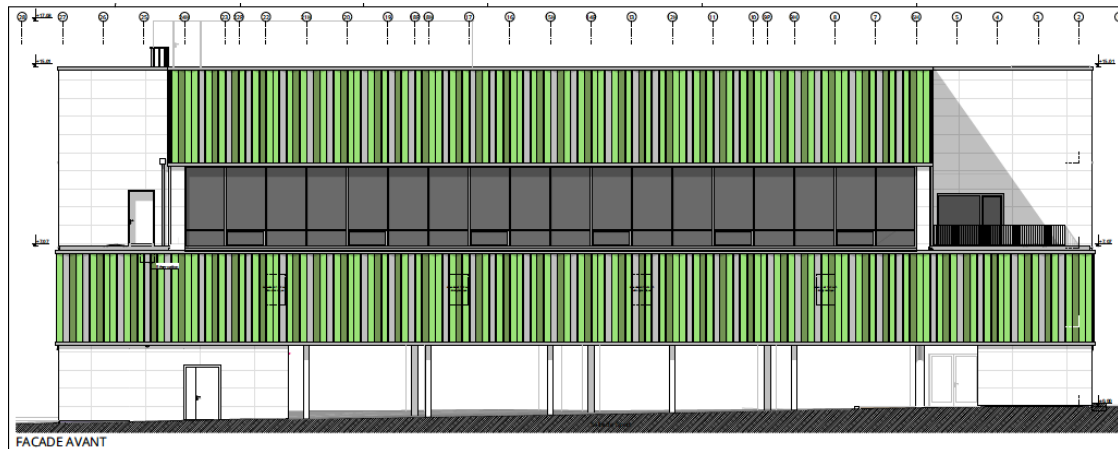


Location: Above the staff car park

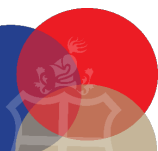
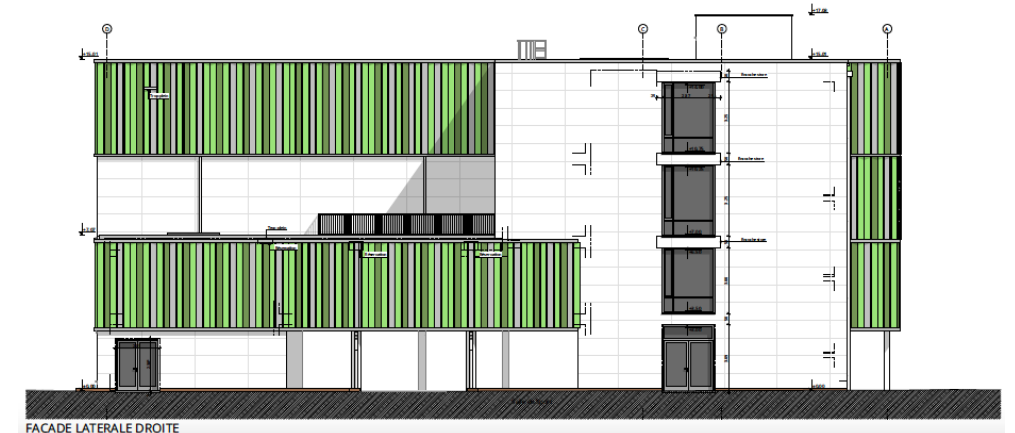


# New Building Overview

## Front and back views



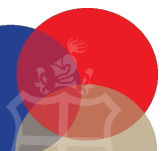
## Side views





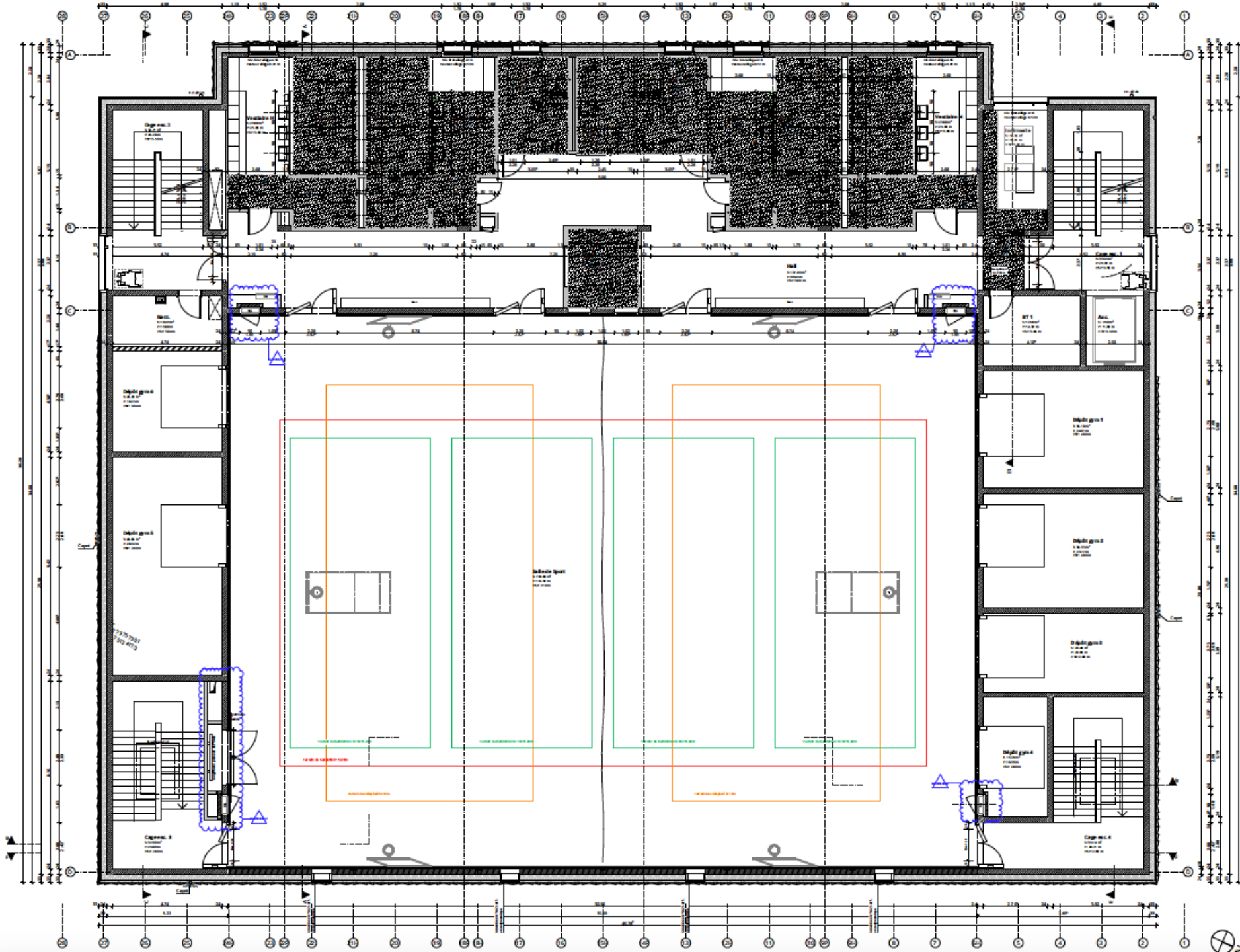
The new building features:

- Double-sized gymnasium hall
- Changing rooms for two classes
- 3 classrooms
- Offices



## 1<sup>st</sup> floor

- Double-sized gymnasium
- Storage rooms
- Bathroom and changing facilities
- Nurses office

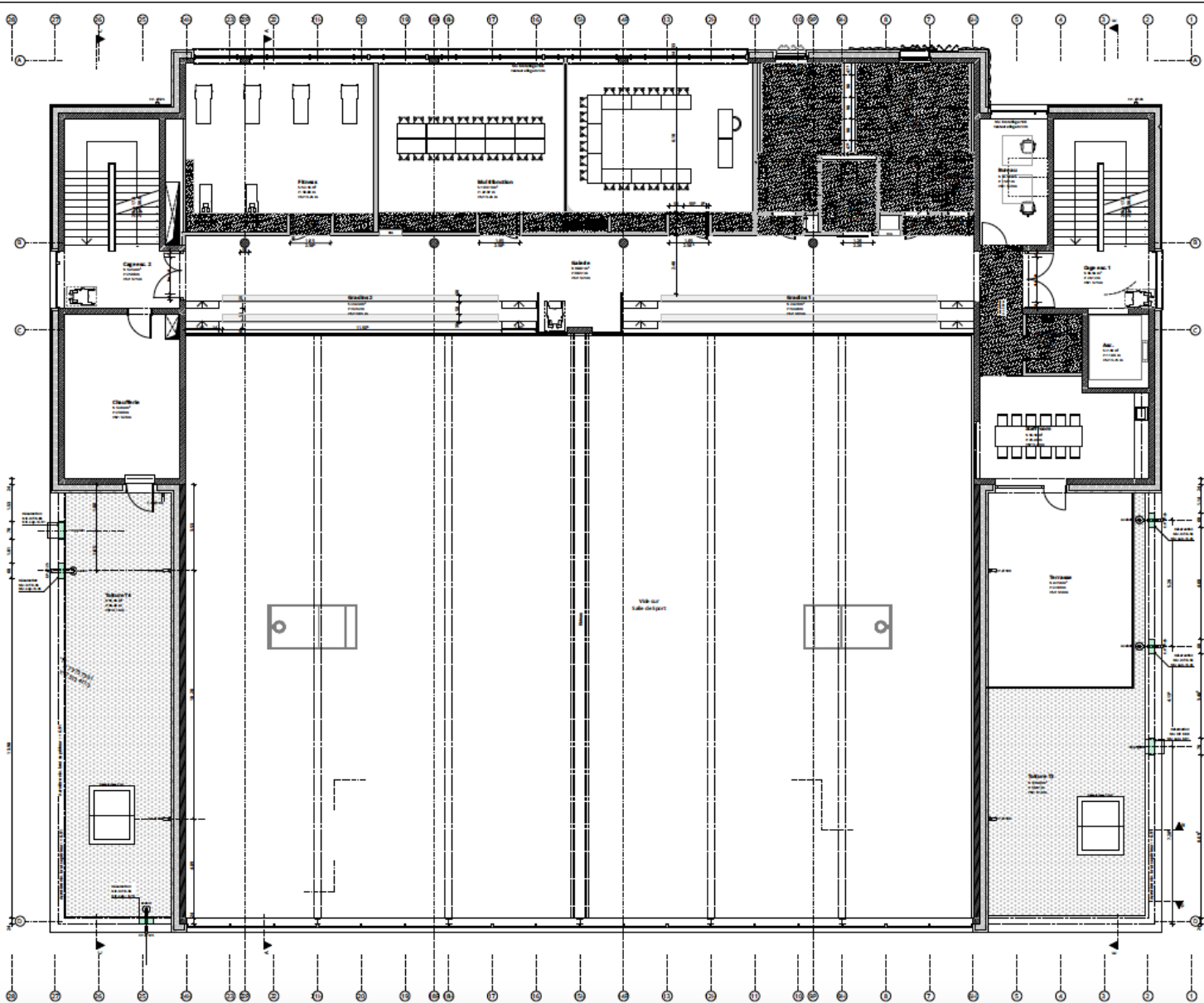




Double-sized gymnasium will allow us to host inter-school competitions

2<sup>nd</sup> floor

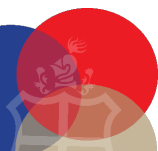
3 classrooms







6 offices and classrooms





# FAQS:



## **How will the construction affect students? (noise levels)?**

As with all building sites, there will be some noise; however the previous construction site (Zinnen) was as close to the student area as this one and that was managed; student and staff will be completely separated from the construction site.

## **How will the construction affect parents? (access to school, drop-off times, Kiss & Fly)**

Access to the administration building will be via a corridor running alongside the building site, drop off times and Kiss and Fly will not change. There will be no parking available at all on the staff car park for staff or parents during the construction period.

## **How will this benefit the school once complete?**

Once this project has been completed we will have better indoor sports facilities on site, the ability to host inter-school competitions, and more classrooms. Students will no longer need to travel for Physical Education lessons off-site.