



Amwen ngeni Campus Sam me In

lei eomuwe Campus Sam me In homepage. Eaea ekkewe tabs won ewe peniengawen ren eom kopwe navigate. Click ewe asiisi **Menun Chon Eaea** ren eom kopwe siwini settings kena.



- Message Center
- Today
- Calendar
- Assignments
- Grades
- Grade Book Updates
- Attendance
- Schedule
- Academic Plan
- Fees
- Documents
- More

Message Center

Announcements (4 new) Inbox (1 new) Surveys

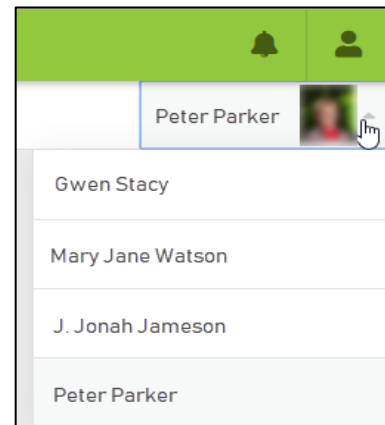
1. **Nenien Poraus** a pwarano an district me school apieon poraus kena. En ka tongeni cheki poraus kena ra titingonuk seni sense kena me fan ewe Inbox.
2. **Ikenai** a pwarano ekkena assignments repwe tonong ikenai ika nesor ren ewe chon sukun a finita.
3. **Kalendar** a pwarano assignments kena me pwan fofor kena a fiti (usun chok an ese fiti ika mangeto kena) ren ewe chon sukun a finita. Assignments kena me pwan fofor kena a fiti ra tongeni clicked won ren an epwe pwarano napenon tichikin kena me pwan en ka tongeni cheki fofor kena me mwan me pwan me mwach kaan seni asiwinin ewe ranin.
4. **Assignments kena** ra pwarano meinis assignment kena ra wasino ren ewe chon sukun a finita, fiti skoren kena, finaikin kena, me pwan poraus seni sense kena, atetenino seni ranin. En ka kan pwan tongeni kuuta ren assignment kena rese nom.
5. **Grades kena** ra pwarano an ewe chon sukun we GPA, ekkena grades ra kan apachata (usun chok nukonapen ierin sukun kena), me pwan gradin napenon non ei attun ren meinis class kena. Click ew mwich ren eom kopwe kuuna ew pokupokutiwen ren atetenin gradin kena, me pwan click ew atetenin ren eom kopwe kuuna assignment kena mi riri ngenir me pwan skorir kena (ika mi kawor).
6. **Asofonon Buuken Grade** a maaketiw meinis ekkewe assignments kena ina ra kna fen skoreno ika pwan kan asofono non ekkewe nasenon 14 ran.
7. **Fitin Sukun** a maaketiw meinis foforon fitin kena (ese fiti me pwan mang kena) ren chon sukun a finita non ewe finin attun sukun. En ka tongeni cheki porausen wuuruwon seni toggling nefinen attun fansoun kena.
8. **Atetenino** a pwarano an ewe chon sukun we ateten ren ew me ew attun fansoun, mi pachenong ekkena ranin akunsefan kena. Ateten kena ra pwarano ren meinis ewe unusen ier, meinis attun fansoun kena, me pwan meinis an ewe chon sukun kewe tonong kena.
9. **Amonen Sukun** a pwarano an ewe chon sukun we napeno iei ngeni akisinon credit kena epwe angei ren sochungio (*chon sukunen high school kena chok*).
10. **Mon kena** a pwarano me a niwinimang ngeni non ei attun ren emon me emon chon sukun me pwan mut ngonuk eom kopwe moni mon kena seni credit card, debit card, ika electronic check.
11. **Taropwe kena** ra mut ngeni sam me in kena ar repwe nengeni me pwan kapiini noun chon sukun katon repot kena.
12. Ewe **Chomong** tab a pwarano meinis chomong pwan ekkoch pisekin portal kena (*Nengeni peich 2 ren chomong tichikin*)

Ika pwe en kose kan kuuna ei menu won ewe peniengawen, click ekkewe wunungat line kena non ewe peniengawen pwokuku me won.

Chomong chon sukun kena

Nupwen en ka fini ew tab ika pisek non Campus Parent, ii epwene default ren an epwe pwarano porausen emon chon sukun we. Iten ewe chon sukun we me pwan sasingen a pwano won peniefichin me won. Ren eom kopwe asiwin ren eom kopwe nengeni porausen pwan emon chon sukun, iwe kopwe chok click ewe sasing/iten me pwan fini seni ewe dropdown.

Nupwen en ka fini emon chon sukun, Campus Parent epwene default ren an epwe pwarano porausen en chon sukun tori eom ka fini pwan emon.



More

Address Information	Nengeni address me pwan nampan fon ren ewe imw.	>
Assessments	Nengenin an ewe chon sukun kewe skor ren state, unusen fonu, me pwan district tes kena.	>
Demographics	Porausen chon sukun me pwan nefiner ngeni emon esapw chon imwer (io repwe kori nupwen atepwanepwan)	>
Family Information	Porausen io repwe kori me pwan porausen nefiner ren meinisin chon non ewe imw.	>
Important Dates	District Holiday kena	>
Transportation	Bus me/ika porausen parking permit	>
Parent Access	Code ren eom kopwe atotogeni an chon sukun Schoology sukun kena me pwan FirstView	>
Online Verification and Residency	Atononga emon minafon chon sukun ika awasano eom afaten iteiten ier & taropwen ia ka nom ie (nupwen a kawor)	>

Ifa usun ai upwe...

Cheki gradin nei chon sukun we?

Ika pwe a wor chomong noum chon sukun kena, en kopwene kan fini emon chon sukun non peniefichin me won ren eom kopwe nengeni porauser.

Click ewe **Mwich** tab kena. En kopwene kuuna non sopwesopweno me pwan grades kena ra apacheta ren ew me ew class, me pwan en ka tongeni click won ew class ren eom kopwe kuna chomong tichikin skoren assignment kena me pwan poraus. Nengeni peich 6 ren chomong poraus.

Kapiini echo Katon Repot?

Ika pwe a wor chomong noum chon sukun kena, en kopwene kan fini emon chon sukun non peniefichin me won ren eom kopwe nengeni porauser.

Fini ekkewe **Taropwe** tab kena me pwan fini ewe sakkun ren ina en ka mochen kapiini echo kato. Nengeni peich 6 ren chomong poraus.

Nengeni porausen an fiti sukun?

Ika pwe a wor chomong noum chon sukun kena, en kopwene kan fini emon chon sukun non me won ren eom kopwe nengeni porauser.

Fini ewe **Fiti sukun** tab. Meininis ese fiti sukun kena me pwan mang ngeni kena ren ewe attun iei repwene pwarano. Click ew kaeo ren eom kopwe kuuna chomong tichikin ika eaea ekkewe arrow me won ren eom kopwe navigate nefinen attun fansoun kena. Nengeni peich 7 ren chomong tichikin kena.

Nengeni ai momo kena me pwan awora momon kena?

Ika pwe a wor chomong noum chon sukun kena, en ka tongeni nengeni fengeni meininis ar momo kena, ika fini emon chon sukun ren eom kopwe kuuna mon emon me emon.

Fini ewe **Momo** tab ren eom kopwe nengeni meininis momo kena ra ngenir. Kose mochen kopwe sinei pwe esapw meininis mon sukun kena ra kan tongeni monir online non ei fansoun. En ka tongeni moni mon kena non unusen ika non atetenin momotiw kena. Ren eom kopwe moni ew mon, click **Apache ngeni Riaka**, iwe click **Way Riaka** ren eom kopwe cheki me pwan fofori eomuwe momo. Nengeni peich 8 ren chomong poraus.

Asofono ai porausen koko?

Asofono a kan tongeni fori me fan ewe **Chomong** tab. Kose mochen kopwe sinei pwe en kosapw tongeni eom kopwe fori siwin kena ngeni poraus nupwen ewe Online Verification & Residency window (a kan iteiten April-July) a kan wor ekkena asofono repwene kan apachenong non ewe aeoeonon afatenon. Siwin kena repwe kan cheki me pwan apungano seni chon angangen ofesin sukun me mwan ir repwene kan pwano non Campus Parent.

Ren eom kopwe asofono ewe aewin nampan chon imw, fini **Porausen Address** . En kopwene kuuna ewe aewin nampan fon me pwan address iei ren meininis chon non imwomuwe. Click Update ren eom kopwe tungor ew asiwin ngeni ewe nampan fon. Address kena resapw tongeni siwin won ewe portal.

Ren eom kopwe asofono porausen kokon family, fini **Porausen Family** . Click Asofono fan ew ekkena it ren eom kopwe tungor ew asofono noun ena emon aramas we nampan fon ika email address.

Ren eom kopwe asofono porausen kokon atepwanepwan, fini **Demographics** me pwan fini emon chon sukun non won peniefichin (ika pwe mi wor noum chomong). En ka tongeni asofono, apechanong, ika atowowu io kopwe kori attun atepwanepwan kena.

Nengeni nei we chon sukun kewe assignment iei?

Ika pwe a wor chomong noum chon sukun kena, fini emon chon sukun non peniefichin me won ren eom kopwe kuuna an emon me emon assignment kena.

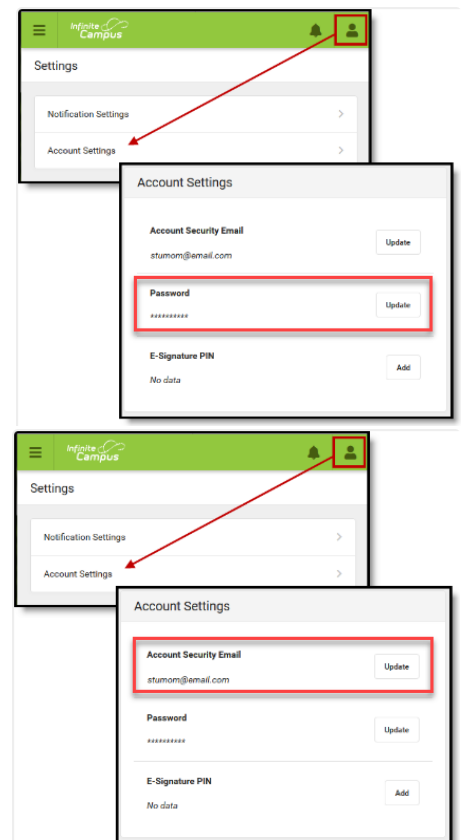
Click **Assignment kena** ren eom kopwe nengeni assignments kena repwe etto seni meininis class kena. Kose mochen kopwe sinei pwe ekkei ra kan amwicha fengenir seni fakkun me mwan tori minafon, fiti ewe aewin minafon assignment kena non sopwenon me fan. Assignment kena ra mangeno repwene pwano non paar - en ka tongeni click **Ese Nom** ren eom kopwe nengeni assignment kena ra mangeto.

Siwini neiwe Parent Portal password?

Click ewe asinin User Menu non won me peniefichin me pwan fini **Foritan Account** Kena. Fan **Password**, click **Asofono**. En kopwe kan uwanong ew password mi pechakun, iwe ina ewe system esapw asepeni. Uwano noumuwe cursor won ewe bworen pechakunen password ren eom kopwe kuuna met kena kopwe fofori kena ren password.

Nengeni/Asofono ai Emailin Tumunun Account?

Eomuwe Emailin Tumunun Account a kan ewe email kopwene eaea ika pwe en ka menukano eomuwe username ika password. A kan forita nupwen eom forata eomuwe account non ewe aewin fansoun me pwan epwene kono seni eom emailin kokoruk. Click ewe asinin User Menu non won me peniefichin me pwan fini **Foritan Account Kena**. Fan **Emailin Tumunun Account** en ka tongeni nengeni met eomuwe security email iei a kan. Click **Asofono** ika pwe en ka mochen siwini ena.



Kreitin kena

Fini **Mwich kena** me pwan fini emon chon sukun (ika mei aeoeo ngeni) ren eom kopwe nengeni ar grades kena. **Gradin Elementary kena rese kan kawor won ewe portal**, nge en ka kan tongeni kapiini echo elementary katon repot non ewe nenien **Taropwe kena**.

En kopwene kuuna meinisin class kena won ewe atetenin chon sukun ren ewe attun. Ewe ierin high school a kan kinikinino non ruwow attun semester kena (S1, S2), me pwan middle school a kan kinikinino non 4 quarter attun kena (Q1, Q2, Q3, Q4). En ka tongeni toggle nefinen attun kena seni eaea ekkewe arrow non me won.



Grades	
S1 (08/15 - 12/21)	< Previous Current Next >
AP Psychology	—
Midterm Grade	B (86.38%)
Semester Grade	C+ (78.56%)
HS Algebra II A	—
Midterm Grade	B+ (87.47%)
Semester Grade	B (85.98%)

Nengeni Skoren Assignment Kena

Ika pwe porausen assignment ren ewe asukun a kan kawor, iwe epwene kan wor efoch light gray arrow arun ewe mwich. Clickini ren eom kopwe kuuna atetenin assignment kena.

Assignment kena ra kan kinikinino non an sense awewenon atetenin kena non ei nengeni, me pwan en ka tongeni kuuna ewe unusen grade ra angei non ew me ew atetenin. **Click ewe asisinin kapach ren eom kopwe nengeni ewe an emon me emon assignment me skor kena.**

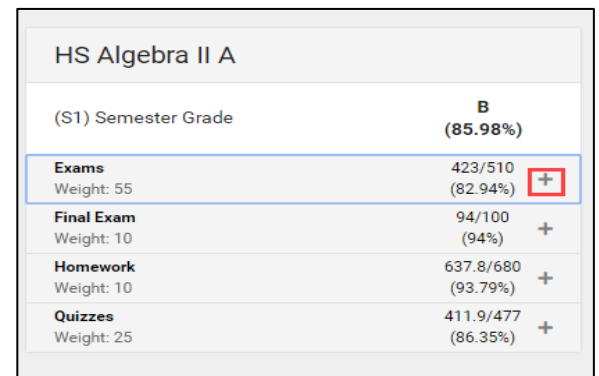
Choun kena

Sense kena repwene eiemuweno ar kena assignment non atetenir kena me pwan ngeni ekkena ateten sakonon chouur kena.

Ika pwe ew ateten a kan tekia choun seni pwan ew, iwe ewe assignment a skor non ewe tekian ateten epwene anea ren napenon non ewe unusenapen kapachen grades kena.

Assignment kena rese nom (Aruwowen chok)

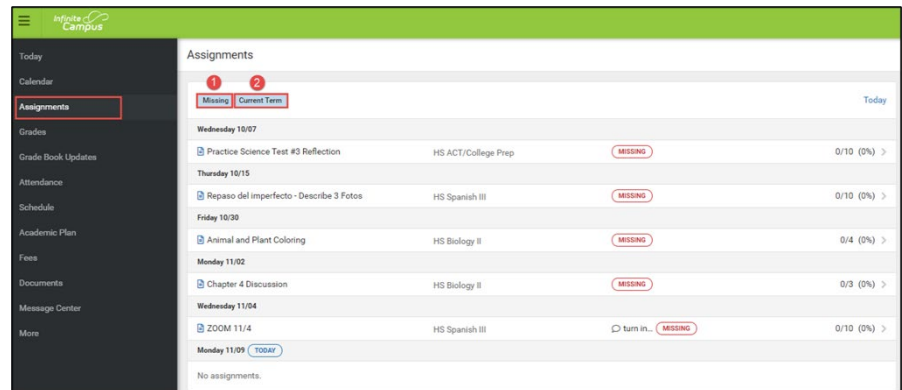
Ren eom kopwe kuuta assignment kena rese nom, click **Assignment kena**



HS Algebra II A	
(S1) Semester Grade	B (85.98%)
Exams Weight: 55	423/510 (82.94%)
Final Exam Weight: 10	94/100 (94%)
Homework Weight: 10	637.8/680 (93.79%)
Quizzes Weight: 25	411.9/477 (86.35%)

Ei neni epwene maaketiw meinisin assignment kena ren meinisin class kena seni ranin, mi pachenong ekkena me mwan me pwan assignment kena repwe etto mwach kaan.

1. Click ewe **'Ese nom'** toggle non ewe me won ren eom kopwe finawow chok assignment kena rese nom non ewe maaketiw.
2. Click ewe **'Minafon Attun'** toggle non ewe me won ren eom kopwe finawow chok me mwan ika non mwach kaan Attun assignments kena.



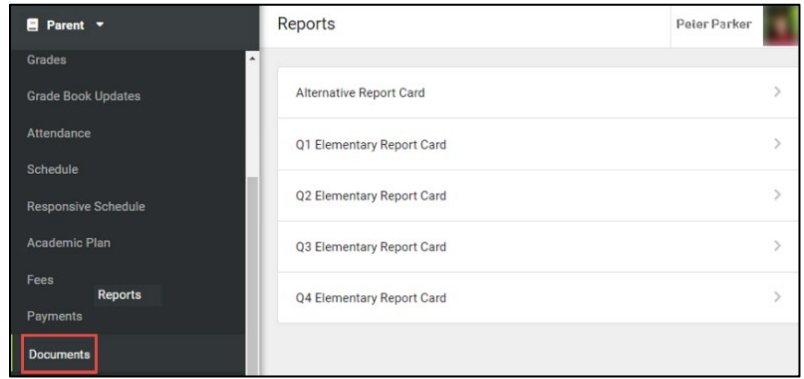
Assignments			
			Today
Wednesday 10/07	Practice Science Test #3 Reflection	HS ACT/College Prep	MISSING 0/10 (0%)
Thursday 10/15	Repaso del imperfecto - Describe 3 Fotos	HS Spanish III	MISSING 0/10 (0%)
Friday 10/30	Animal and Plant Coloring	HS Biology II	MISSING 0/4 (0%)
Monday 11/02	Chapter 4 Discussion	HS Biology II	MISSING 0/3 (0%)
Wednesday 11/04	ZOOM 11/4	HS Spanish III	turn in... MISSING 0/10 (0%)
Monday 11/09	TODAY		
No assignments.			

Katon Repot Kena

Ren eom kopwe kapiini echo katon repot, fini ewe **Taropwe kena** tab. En kopwene kuuna ekkoch fin kena ren sakopaten attun kena, nge ese nifinifin efen mettoch en ka fini, **epwene kan iteiten kapiini ewe kato repot ren ewe aewin minafon attun.**

Nupwen en ka fori ew finieom, ewe katon repot epwene forita pwe echo taropwen pdf. Epwene kan pop up non eomuwe browser ika download ngeni noumuwe pisek, anongonong won eom browser setting kena.

En ka tongeni save ei taropwe ngeni noumuwe pisek ika kapiinawow.



Fitinong non sukun

Fitinong non sukun non ewe portal a kan asofono non attun fansoun anongonon won an ewe senese we angaiin fitinong. Nge ew chok, fitinong ese kena ekkieki pwe a kan asaingono tori a kan foforino seni ewe seketerin fitinong. Wewen ei pwe ika pwe emon chon sukun a mang toton murin an ewe sense a maakei pwe ese fiti, ewe portal epwene pwarireno pwe ese fiti tori an ewe seketerin fiti a fofori ar fiti nesopwenon ewe ran.

Fini ewe **Fiti sukun** tab ngeni ew unusenapen anea ren meinisin ese fiti me pwan mangeo kena ren ewe chon sukun non ewe attun. En ka tongeni nengeni attun kena me mwan seni eaea ekkewe arrow non me won. Click ewe gray arrow won ew class ren eom kopwe kuuna tichikin kena usun ekkewe foforun fiti ra maaketiw.

COURSE	ABSENT	TARDY
AP Psychology	2	0
HS Algebra II B	6	0
HS Chemistry I	5	0
HS English Language Arts 2	3	0
HS Homeroom/Tutorial	0	0
HS Photojournalism	3	0
Soccer	0	0
Totals	19	0

	ABSENT	TARDY
used	2	0
excused	0	0
empt	0	0
Unknown	0	0

Absences

Wednesday 05/22/2019
Partial Absence/Check-Out EXCUSED
CheckOut 1:30 PM kronos training per mom

Friday 01/18/2019
Partial Absence/Check-Out EXCUSED
CheckOut 11:45 AM family emergency/dadp

En ka pwan tongeni cheki ar fiti non ewe **Kalendar** tab. Click ewe **Fiti sukun** button non ewe me won ren ewe calendar, me pwan meinisin ran kena non ewe maram ka finata fiti ewe forofun fitinong ren ewe chon sukun epwene pwarano ewe dot mi choon. Fini ewe ran ren eom kopwe nengeni ewe porausen fitinong.

The screenshot displays a parent portal interface. On the left is a dark sidebar with a 'Parent' dropdown and a menu containing 'Message Center', 'Today', 'Calendar' (highlighted with a red box), 'Assignments', 'Grades', 'Grade Book Updates', 'Attendance', and 'Schedule'. The main content area is titled 'Calendar' and features three tabs: 'Assignments', 'Schedule', and 'Attendance' (highlighted with a red box). Below the tabs is a calendar grid for May 2019, with the date '16' highlighted in blue. To the right of the calendar, there are two detailed attendance entries for 'HS Algebra II B' and 'HS Chemistry I'. Each entry shows a 'Block' number, the type of absence (e.g., 'Partial Absence/Check-Out'), a description, and a green 'ABSENT EXCUSED' button.

Month	Su	Mo	Tu	We	Th	Fr	Sa
May 2019				1	2	3	4
May	5	6	7	8	9	10	11
May	12	13	14	15	16	17	18
May	19	20	21	22	23	24	25
May	26	27	28	29	30	31	

HS Algebra II B
Block 2 Partial Absence/Check-Out
CheckOut 9:30 AM dr appt per mom
ABSENT EXCUSED

HS Chemistry I
Block 3 Partial Absence/Check-In
CheckIn 12:31 PM check back in
ABSENT EXCUSED

Moni Momo kena

Chon Sukunen district me sam me in kena ra kan iei tongeni moni ekkoch momo kena online seni non ewe Infinite Campus Parent Portal fiti echo e-check ika Visa, Mastercard, ika Discover cards kena.

Fini ewe **Momo kena** tab ren eom kopwe kuuna meininon momo kena. Ren eom kopwe moni momo kena, click **Apacha ngeni Riaka** arun ewe momo en ka mochen moni, iwe click **Ai Riaka**. Ren eom kopwe kuuna momo kena ren emon chok chon sukun, iwe finir seni ewe **Aramas** dropdown.

Fees

0 Items in Cart \$0.00

My Cart My Accounts

Person: All

School Year: 2019 - 2020

Type: Unpaid

Total Due: \$55.00

Change the school year/type to see past and paid fees

DESCRIPTION	DUE DATE	PERSON	FEE BALANCE
PHHS Athletic Participation			55.00
Subtotal			55.00

Add to Cart

Ai Riaka

Eom cart epwene pwarano meininon momo kena en ka finir.

Ren eom kopwe fori ew esopw momon:

Click ewe **Wukukun** box arun ewe momo me pwan uwanong ewe wukukun en ka mochen moni ngeni ewe momo. En ka tongeni fori ew momo epwe tekiakis ngeni \$5, nge momo kena repwe kan momono non unusen me mwan ewe ranin epwe momonong.

Sakkun momo kena:

Ika pwe ese wor **Sakkun Momo** a maaketiw, are ika en ka mochen siwini ewe sakkun mi maaketiw, iwe en kopwene click **Apachanong Sakkun Momo** me pwan uwanong eomuwe tichikin momo kena.

Uwanong Momo:

Ren eom kopwe moni ewe unusen wukukun fiti ewe sakkun momo a maaketiw, click **Uwanong Momo**.

< Back | Checkout

If you have difficulty paying online, please call the Park Hill Help Desk at 816-359-5000.

NAME	FEE	AMOUNT
Student A. Studentson	Technology Insurance	\$50.00

Remove

Subtotal: \$50.00

Service Fee: \$0.00

Total: \$50.00

Payment Method *
VISA *1103

Add Payment Method

Email Address for Receipt
aparent@gmail.com

Submit Payment

Sakkun Momo kena

Ekkena minafon sakkun momo kena en ka kan uwanong me mwan repwene apwano ikei. Ren eom kopwe nengeni ika siwini ew tichikin sakkun momo kena, click ewe gray arrow arun ena.

Ren eom kopwe uwanong ew minafon sakkun momo, click **Minafo**.

PAYMENT METHODS	EXPIRES	DEFAULT
*1103	01/22	

New

Finis Checking, Savings, ika Credit/Debit Card, iwe uwanong ewe tichikin accoun ika nampan kato.

Ewe **Nickname** a kan chok ren eom kopwe tongeni asisinano eom sakopaten sakkun momo kena.

Ren checking/savings accounts kena, esapw pwan wor namoten eom kopwe pusin amasowanong echo check. Uwanong ekkewe nampa ra pwano me pwan ewe wukukun a finita epwene wuutuwow seni ewe account.

ROBERT SAMPLE
JOAN SAMPLE
123 MAIN ST.
PORTLAND, ME 04101

Date _____

Pay to the Order of _____ \$ _____

Dollars _____

T.D. Bank
America's Most Convenient Bank®

For _____

Routing Number: 023454321 Account Number: 023454321 9999

Ika pwe en ka mochen ei sakkun ren an epwe ewe default ren momo kena non mwach kaan, cheki ewe **Eaea pwe epwe ewe pworen a finite me mwan**. En ka iteiten angei ewe finin eom kopwe siwini sakkun momo kena me mwan eom uwanong eom momo kena seni non **Ai Riaka**.

Click **Iseni** ren eom kopwe savini ewe sakkun momo. En ka tongeni apechanong pwan ew finin momo ika pwe en ka mochen, ika click back ren eom kopwe niwin ngeni eomuwe screen me mwan.

Payment Method:
VISA DISCOVER

Checking, Savings, or Card *

Checking
 Savings
 Credit Card/Debit Card

Nickname
Mom's Visa

Card Number *
1234 1234 1234 1234

Card Expiration *
08/22

Name On Card *
A. Parent

Address *
123 Real St.

Zip Code *
64152-____

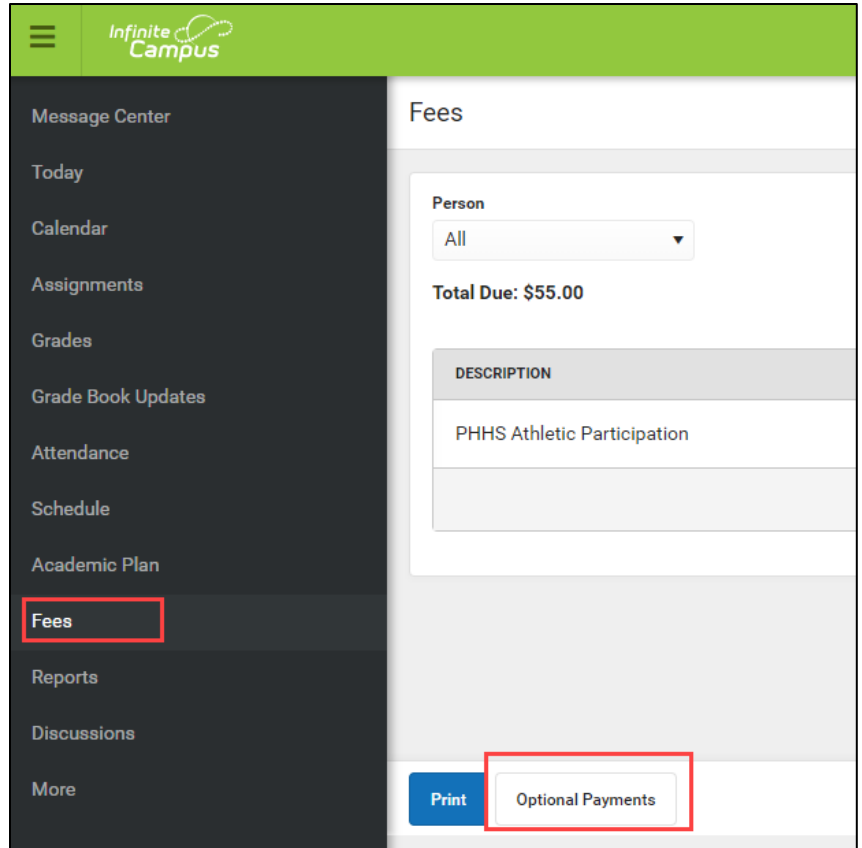
Default Payment Method
 Use as default

Save **Cancel**

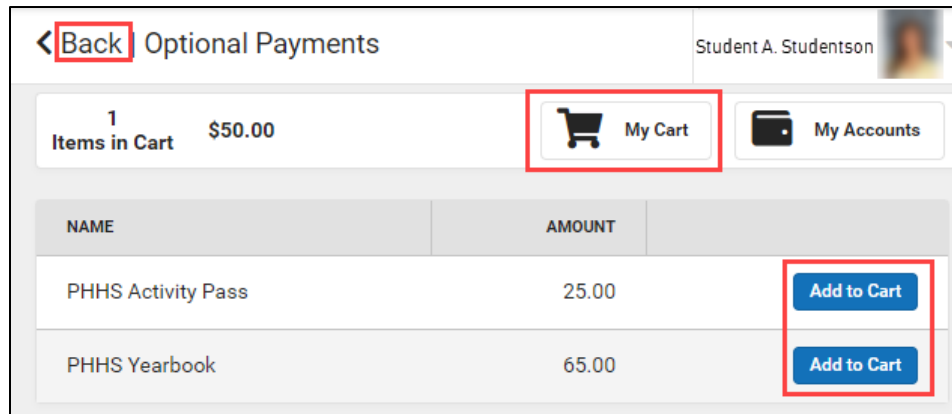
Momo Kena Repwe Pusin Finieom

Ekkoch sukun kena ra kan awora an sam me in fin ren ar repwe moni ekkoch finin momo kena (usun chok pass kena ren fofor kena, yearbook kena, em pwan ekkoch)seni non Campus Parent.

Ren eom kopwe nengeni finin momo kena mi kawor, fini ewe **Momo kena** tab me pwan click ewe **Fininon Momo kena** button arun ewe sopwenon fan ewe screen.



Ekkena finin momo mi kawor repwen pwarano ren ewe chon sukun a finita. Click **Apacha ngeni Riaka** won ekkena momo en ka mochen, iwe click **My Riaka** ren eom kopwe fori ew momo ika **Niwin sefan** ren eom kopwe niwin ngeni ewe screen me mwan.



Ika pwe mi wor eom kapaseis kena usun ekkena asainin ika fini momo, kose mochen kori an noumuwe chon sukun we sukun. Ika pwe a wor eom osupwangen technical fiti ewe online systemin momo, en ka tongeni kori achewe Help Desk non 816-359-5000.