



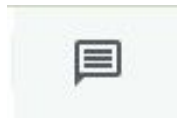
Special Education Advisory Council (SEAC)

Dec, 06, 2021

Housekeeping

Before the start of the meeting please:

- Mute microphone if not sharing
- Sign in to the meeting using Chat
- Submit questions or comments using the Chat feature
- Let us know if you need support using Zoom features



Click on to open comments



**Saint Paul Public Schools
Special Education
Advisory Council**

Welcome & Introductions



Agenda

6:00 pm Housekeeping, Welcome & Introductions

6:10 pm Meet & Connect with Board of Education Vice Chair Vue

6:30 pm Approve Nov. minutes

6:25 pm Review and Vote on Updated SEAC Procedural Guidelines

6:45 pm SEAC Membership

6:50 pm Special Education Update

ARP, SpEd Recovery, Envision

7:20 pm SEAC Forum

7:50 pm Meeting Reflections/Announcements/Events/Resources

8:00 pm Adjourn

6:10-6:30 pm

Meet & Connect with Board of Education Vice Chair Vue



6:30-6:35 pm

Approve November Meeting Minutes



6:30-6:45 pm

Review & Update Organizational Guidelines

[SEAC Organizational Guidelines Document](#)



6:45-6:50 pm

SEAC Membership

- New Member Roxanne King
- Co-Chair, Melissa Haley stepping down as Co-Chair
- Vote to elect new Co-Chair Rachael Sewell
- Vote to appoint new Executive Committee members
 - Calton Sims and RaShonda Muhammad

6:50- 7:20 pm

Specialized Services Update



Office of Specialized Services (OSS)

Marcy Doud, Deputy Chief of Schools

Supervises Schools under Division of Schools

Oversight of Special Education, Wellness, Third Party Billing

Legal, Finance, Dispute Resolution



Brenda Natala, Executive Director of Specialized Services - Interim

Supervise daily operations of Special Education Birth-21



[OSS Organization Link](#) - schools and supervisors



OSS Supervisors



Jennifer Krueger
Supervisor,
Due Process



Larry Wren
Supervisor
K-12 Schools



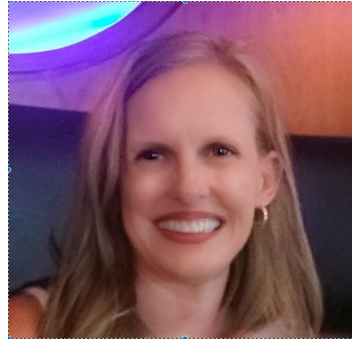
Sarah Zielinski
Supervisor,
ECSE



OSS Supervisors



Chong Thor
Supervisor
K-12 Schools



Amy Johnson
Supervisor
K-12 Schools



Hai Yen Vo
Supervisor
K-12 Schools



Academic Updates

Training for teachers - Literacy and Math

Progress Monitoring -- **November Progress Reports**

Curriculum investments - specialized programs

Board Maker

Unique Learning Systems



Special Education Recovery Service

Special Education Recovery Services

Have you had an IEP meeting yet to talk about Recovery Services?



Envision SPPS program changes, closures, relocations and/or expansions effective SY22-23

Area A:

- L'Etoile du Nord French Immersion (LNFI) lower merges at the LNFI upper campus
- LNFI lower site reopens as early childhood education hub
- Parkway reopens as Hmong Language Immersion and Culture program upper campus (to Phalen Lake lower campus)

Area C:

- J. A. Johnson merges at Bruce Vento

Area D:

- Cherokee Montessori program relocates and merges at J.J. Hill
- Cherokee reopens as a community school
- Riverview community program closes and merges at Cherokee

Area E:

- Galtier merges at Hamline
- Galtier reopens as early childhood education hub

Area F:

- Jackson community merges at Maxfield
- Jackson Hmong Language merges at Phalen Lake



Envision SPPS program changes, closures, relocations and/or expansions

Area F:

- J.J. Hill Montessori relocates to the Obama site once remodeling is complete (either fall 2024 or fall 2025) and reopens as the Barack and Michelle Obama School and will also house a middle school (grades 6-8)

At the start of school year 2025-26:

- Capitol Hill's pathway will be expanded from Highland Park High School to other high schools so that students pathway to their community high schools



Envision SPPS Special Ed. Impacts

Specialized Program Classroom Changes

- John A Johnson closing - ECSE classrooms move to another school or Early Childhood Hub
- Parkway closing - ASD and EBD programs move to another middle school
- Students at all impacted schools with less intense services (Fed 1 or 2) included in transition planning
- Obama Elementary (fall 2023) - EBD program move to another school

Early Childhood Hubs

L'Etoile du Nord Lower (EAST)

Galtier (WEST)

Pre-K Classrooms (4 year olds)

Early Childhood Family Education (ECFE - Birth to 5)

Early Childhood Special Education (ECSE)

- Inclusive services in Pre-K and ECFE
- ECSE classrooms (3 and 4 year olds)
- Family programs



Envision Impacts

How do we consider the needs of families with children in special education who may need to transition to new buildings next year due to Envision SPPS?

The Office of Specialized Services is collaborating with Office of Family Engagement and Student Placement Center to guide families through the process.



Special Education Staffing

Special Education Teachers

Monitoring caseloads

Substitute teacher shortages -

special education coaches often subbing

Recruiting Paraprofessionals -- [TA Interest Form](#)



Problem Prevention/Problem Solving

Get to know your child's team.....

- Principal and/or Assistant Principal
- Classroom teachers
- Your child's IEP Manager
- Special Education Supervisor



Special Education and Discipline

- Students with IEPs have additional due process rights related to discipline (suspensions and dismissals)
- Students with disabilities have limitations for how many days they can be removed before certain actions are required (10 days)

Manifestation Determination

- A manifestation determination meeting must be held upon the 11th cumulative day of suspension & for special circumstance behaviors (serious discipline incident)
 - IEP team determines
 - if behavior was directly related to disability
 - if the IEP was being implemented appropriately by the District.
- Result of manifestation determination meeting determines next steps (see next slide)

Not Manifestation of Disability?

- Child with IEP can be disciplined in the same way that a general education student is disciplined

Manifestation of Disability?

- District may not expel student for a misbehavior that is a manifestation of the student's disability
- Student stays in current educational setting (exception for special circumstance behavior- drugs, weapons, serious bodily injury)



7:20-7:50 pm

SEAC Forum- Discussion & Information Sharing

For the expression of concerns and recommendations pertaining to the education of students with disabilities in SPPS.

SEAC members strive to discuss & advise on issues of broad importance to SPPS as a whole.

Personal stories & reflection can be used to inform the group's understanding of broad issues.

Perspectives and confidentiality will be respected.

Members are encouraged to bring forth concerns & recommendations without fear of reprisal.



Message from Superintendent Gothard- I'm Listening

I have heard that SPPS leadership doesn't listen. We don't know what staff want, what students need, or how best to serve our community. I take this feedback to heart, and as we move through our current challenges and onto the next,



A small white rectangular box containing a handwritten signature in black ink that reads "Jeff Gothard".

I want to hear your ideas and your solutions for better serving our community and making our schools the best they can be for our students and families.

- How do we improve student outcomes?
- School climate?
- Staff satisfaction?
- How do we stabilize or even increase enrollment?
- What should we stop doing, and what should we do more of?

7:50-8:00 pm

Meeting Wrap Up

- Announcements, events or resources to share
- Reflection-
 - What is your take-away?
- Tip to share on SEAC Facebook Group
 - What would you like shared on SEAC Facebook this month?





**Saint Paul Public Schools
Special Education
Advisory Council**

**Next SEAC meeting
Monday, January 3rd**



**Saint Paul
PUBLIC SCHOOLS**