

FIELD PATTERN 1-75 OR 1-90

4' X 8' = 8 PER BOARD

4' X 4' = 4 PER BOARD

PERIMETER PATTERN 1-75 ONLY

4' X 8' = 12 PER BOARD

4' X 4' = 6 PER BOARD

**Solar Brite**  
ROOFING SYSTEMS

GENERAL REFERENCE:

**"SBK GS06"**

APPLICABLE SYSTEMS:

**"SBK AD06"**

FULLY ADHERED SYSTEM  
MECHANICALLY ATTACHED INSULATION.  
INSULATION 2.0" THICKNESS OR GREATER

REVISES DETAIL

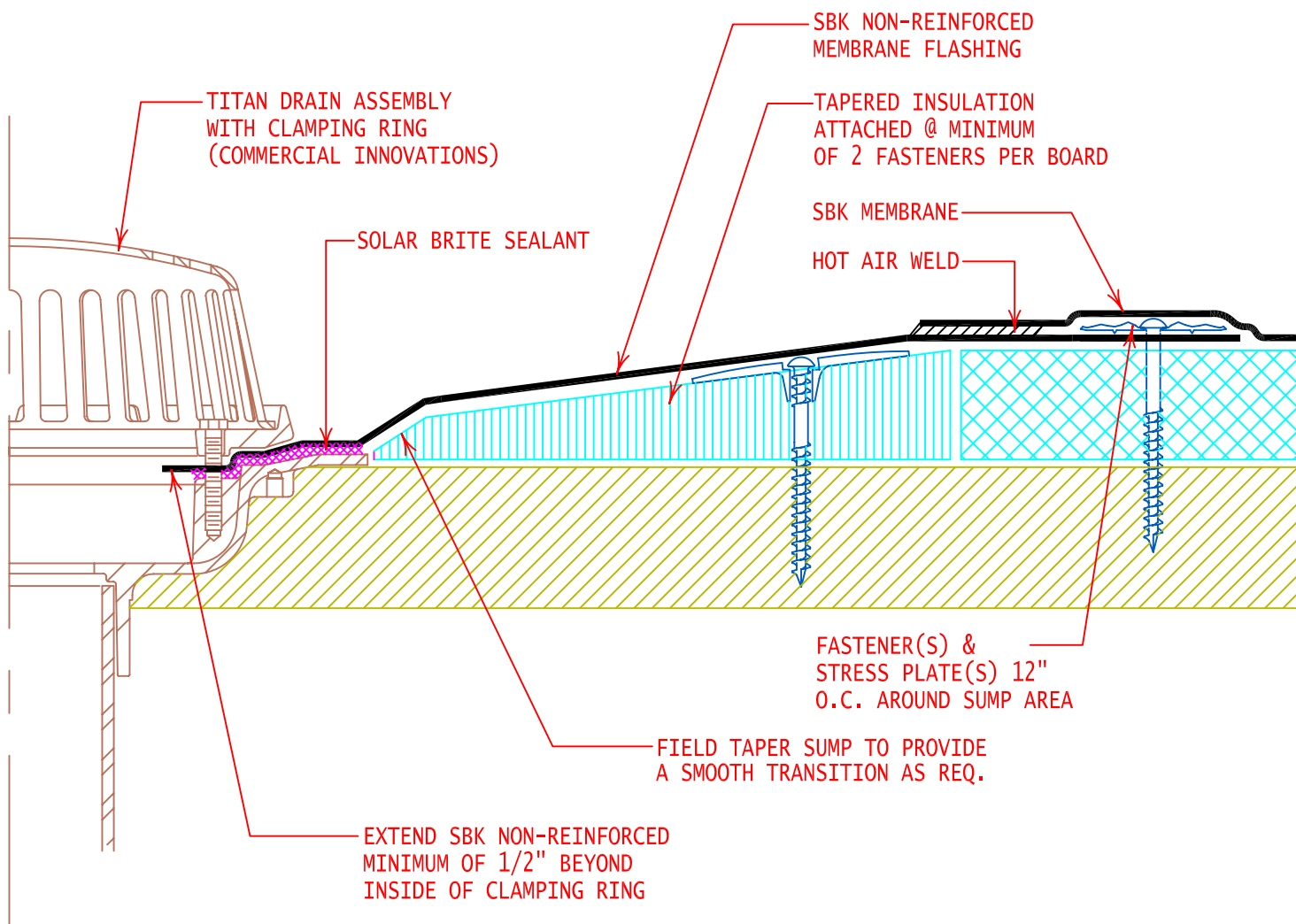
**ALL PREVIOUS**

ISSUE DATE

**03-01-07**

DRAWING NUMBER

**SBK-DI2**



NOTE: USE TAPERED ROOF INSULATION (EDGE STRIPS) TO CREATE DRAIN SUMP. IF TOTAL INSULATION THICKNESS IS LESS THAN OR EQUAL TO 1 1/2 IN., TAPER 12 IN. FROM THE DRAIN CENTER. IF TOTAL INSULATION THICKNESS IS GREATER THAN 1 1/2 IN., TAPER 18 IN. FROM DRAIN CENTER.

# Solar Brite

ROOFING SYSTEMS

GENERAL REFERENCE:

"SBK GS06"

APPLICABLE SYSTEMS:

"SBK MA06"

"SBK AD06"

"SBK BA06"

## TYPICAL DRAIN FLASHING

REVISES DETAIL

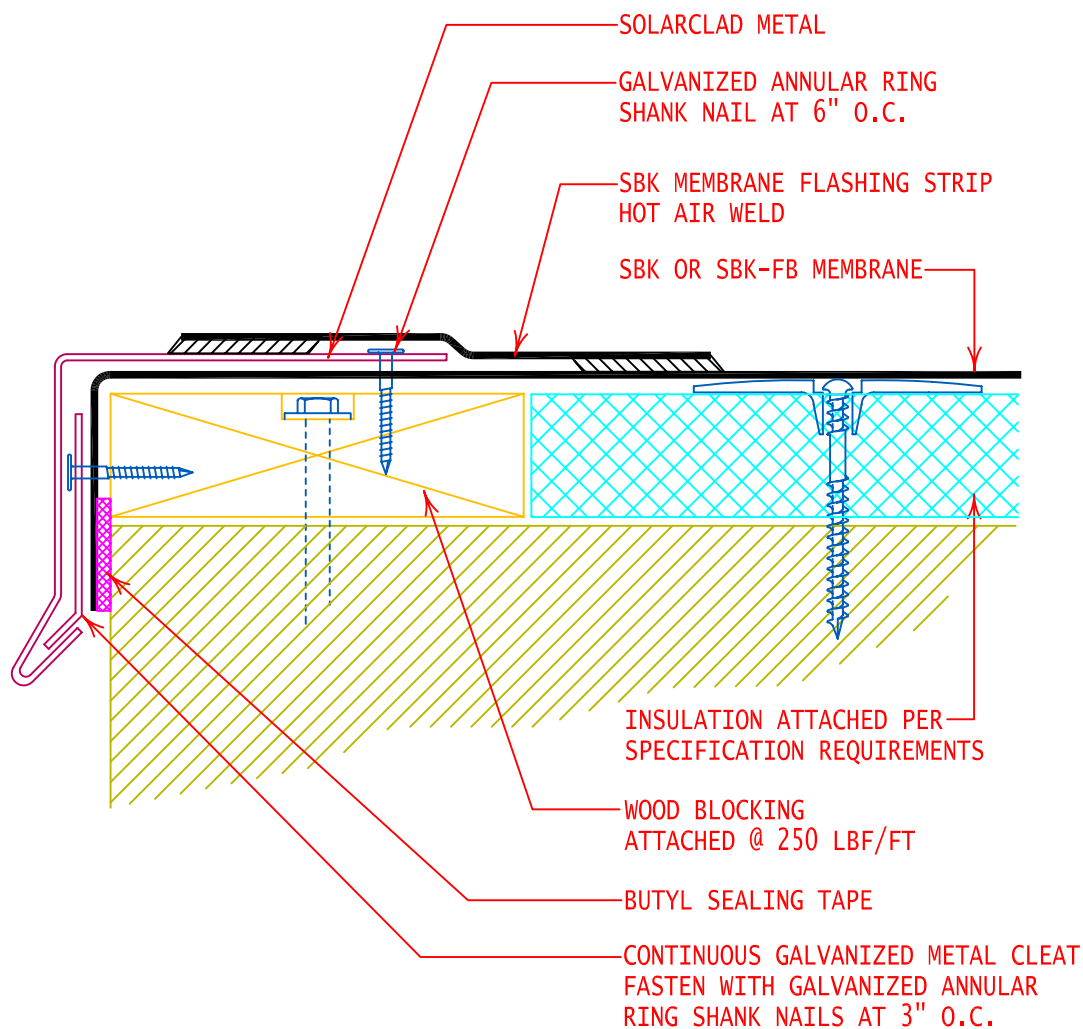
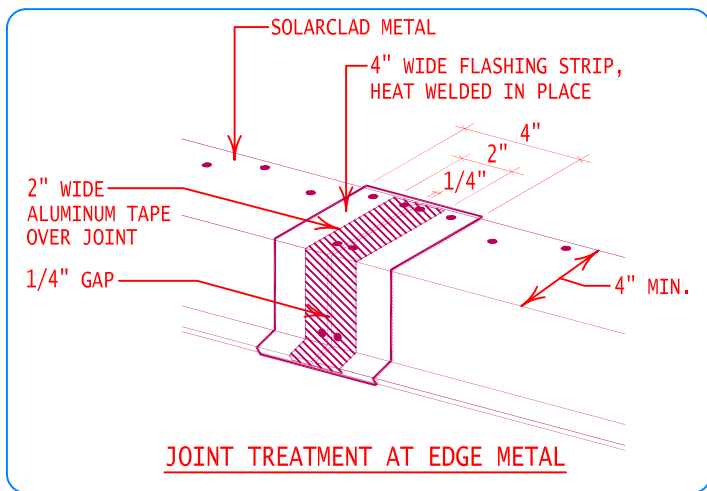
ALL PREVIOUS

ISSUE DATE

03-01-07

DRAWING NUMBER

SBK-DD1

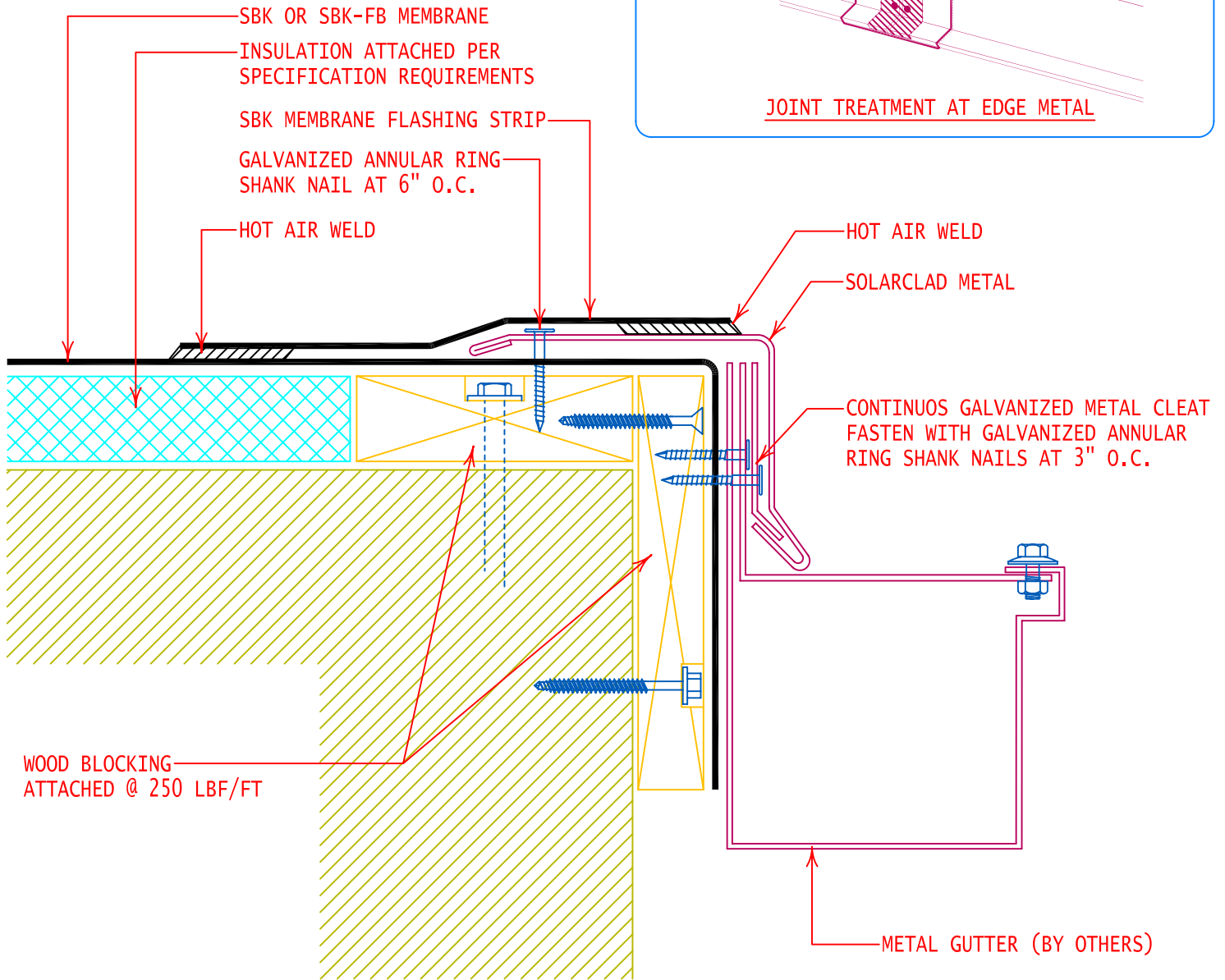
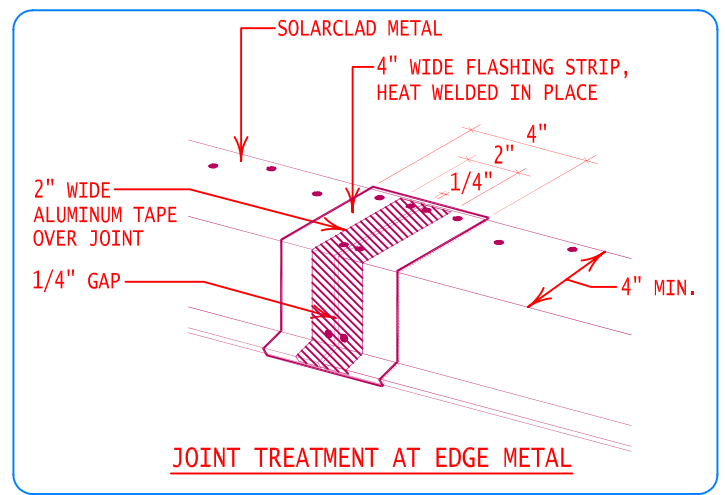


**Solar Brite**  
ROOFING SYSTEMS

GENERAL REFERENCE:  
"SBK GS06"  
APPLICABLE SYSTEMS:  
"SBK MA06"  
"SBK AD06"

### TYPICAL EDGE FLASHING

REVISES DETAIL	ISSUE DATE	DRAWING NUMBER
ALL PREVIOUS	03-01-07	SBK-DE1



**Solar Brite**

ROOFING SYSTEMS

GENERAL REFERENCE:  
"SBK GS06"  
APPLICABLE SYSTEMS:  
"SBK MA06"  
"SBK AD06"

## GUTTER FLASHING

REVISES DETAIL

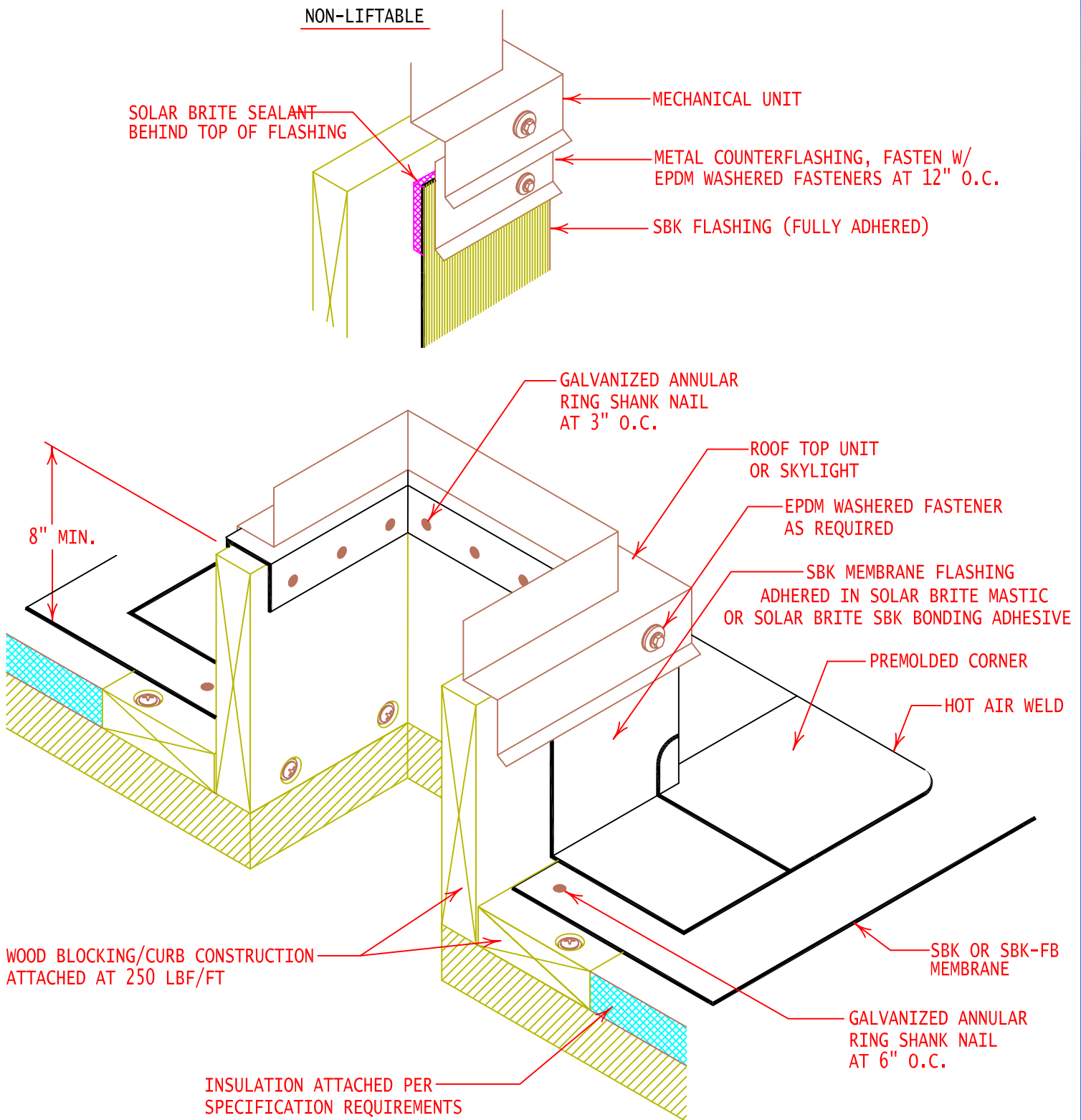
ALL PREVIOUS

ISSUE DATE

03-01-07

DRAWING NUMBER

SBK-DE3



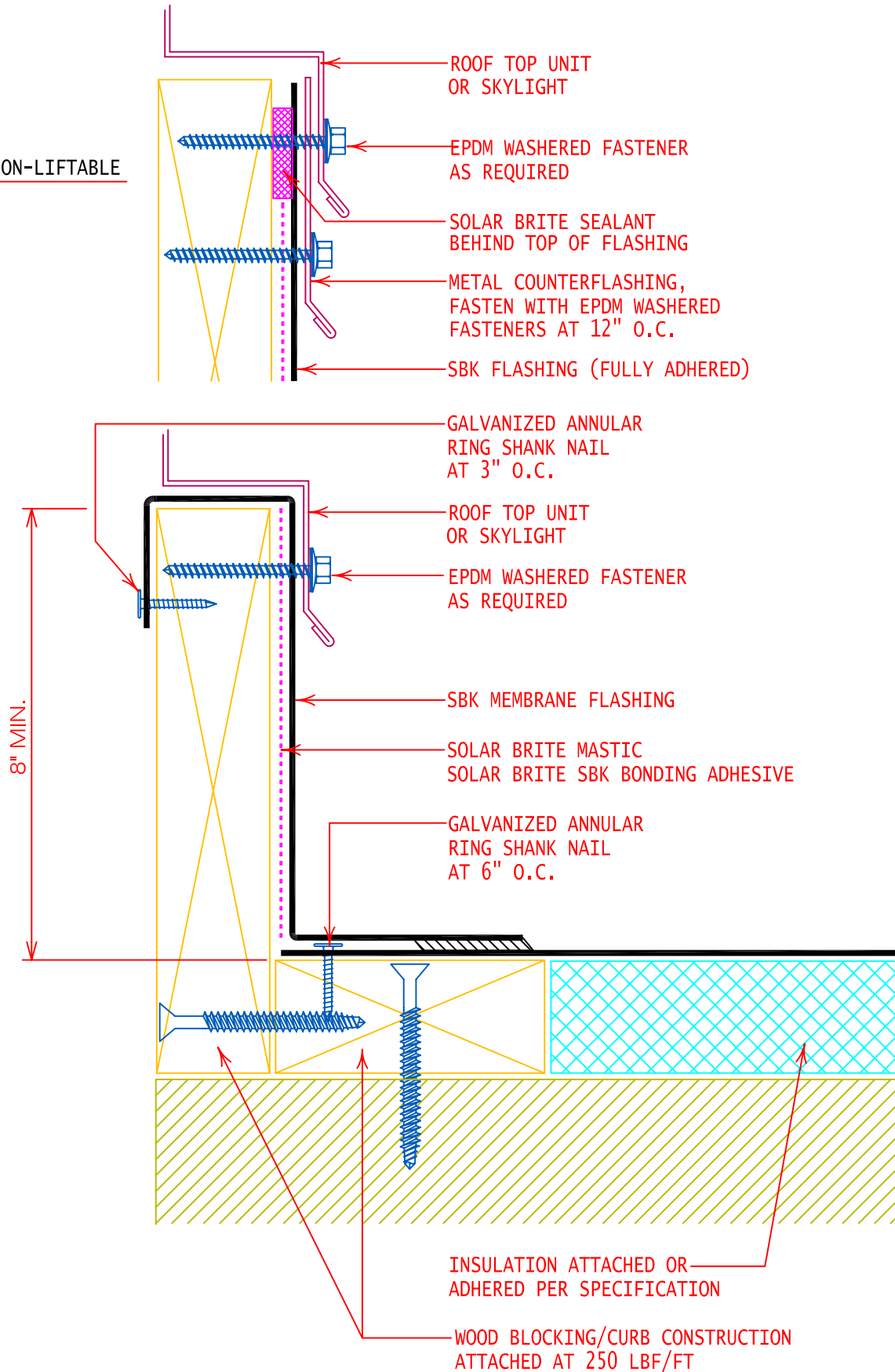
**Solar Brite**  
ROOFING SYSTEMS

GENERAL REFERENCE:  
"SBK GS06"  
APPLICABLE SYSTEMS:  
"SBK MA06"  
"SBK AD06"  
"SBK BA06"

**TYPICAL WOOD CURB  
OR SKYLIGHT FLASHING**

REVISES DETAIL	ISSUE DATE	DRAWING NUMBER
ALL PREVIOUS	03-01-07	SBK-DP1I

NON-LIFTABLE



**Solar Brite**  
ROOFING SYSTEMS

GENERAL REFERENCE:

"SBK GS06"

APPLICABLE SYSTEMS:

"SBK MA06"

"SBK AD06"

"SBK BA06"

TYPICAL WOOD CURB  
OR SKYLIGHT FLASHING

REVISES DETAIL

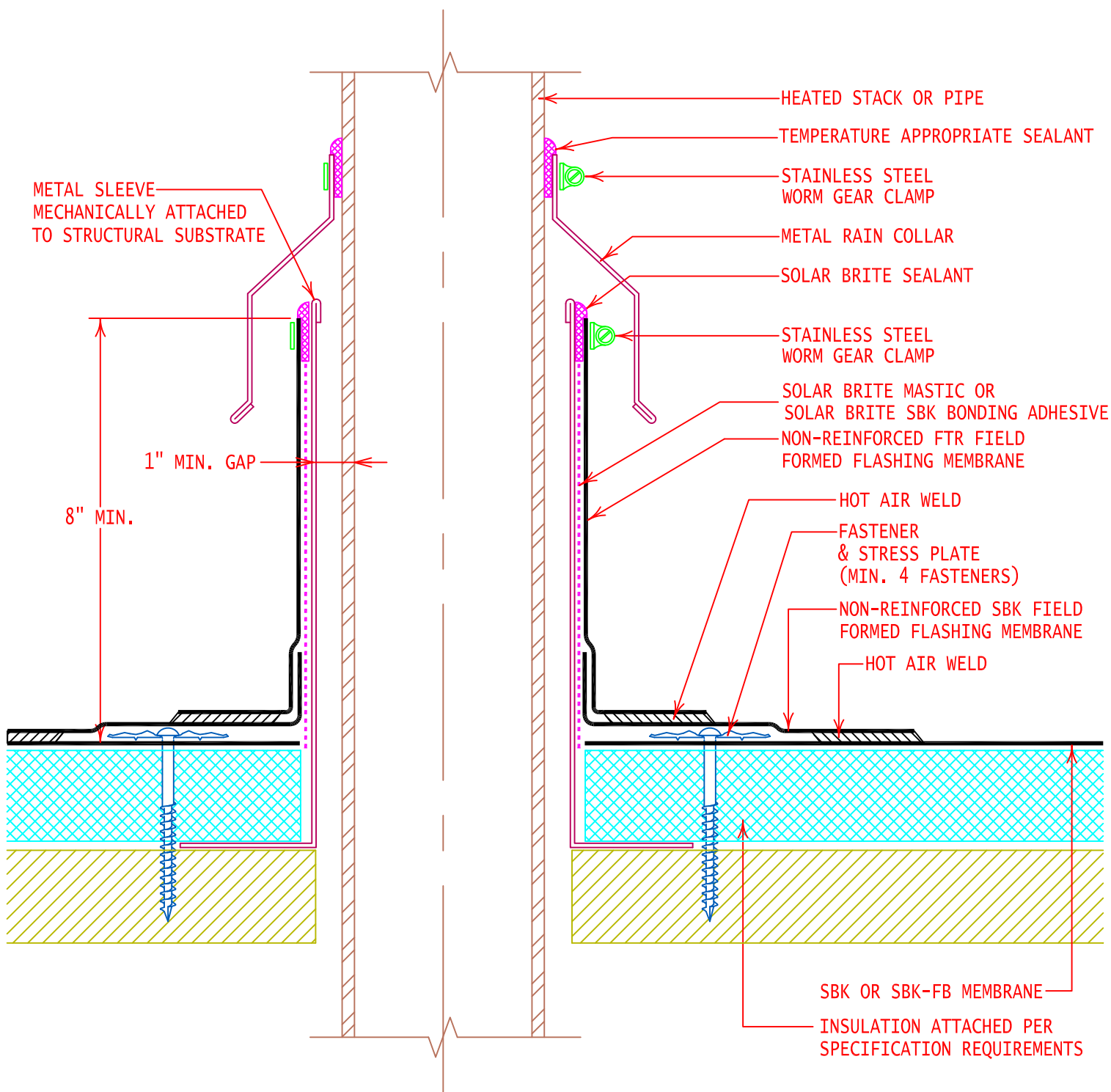
ALL PREVIOUS

ISSUE DATE

03-01-07

DRAWING NUMBER

SBK-DP1



**Solar Brite**  
ROOFING SYSTEMS

GENERAL REFERENCE:

"SBK GS06"

APPLICABLE SYSTEMS:

"SBK MA06"

"SBK AD06"

"SBK BA06"

# HEATED STACK FLASHING WITH METAL COLLAR

REVISES DETAIL

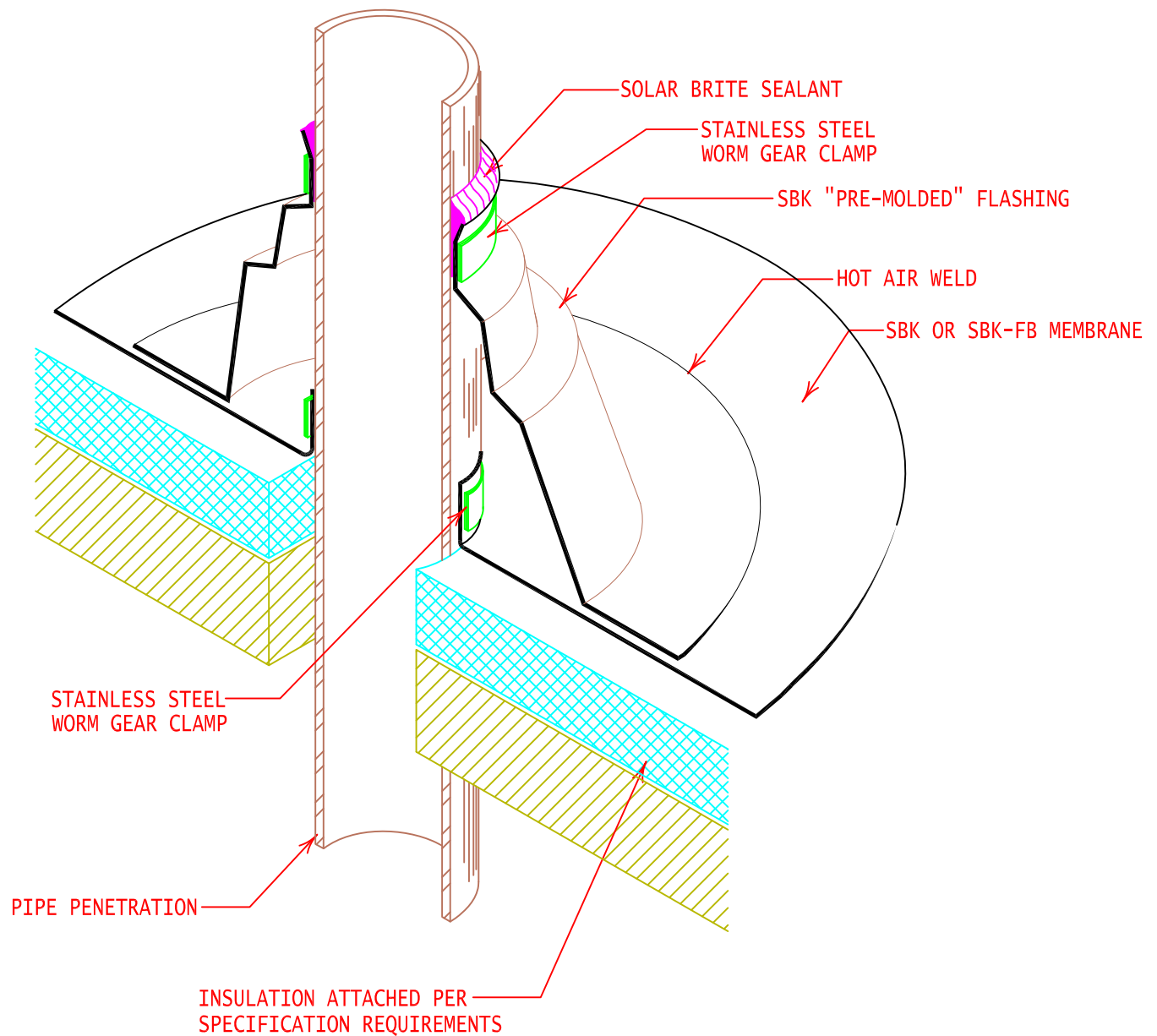
ALL PREVIOUS

ISSUE DATE

03-01-07

DRAWING NUMBER

SBK-DP7



**Solar Brite**  
ROOFING SYSTEMS

GENERAL REFERENCE:  
"SBK GS06"  
APPLICABLE SYSTEMS:  
"SBK AD06"  
"SBK BA06"

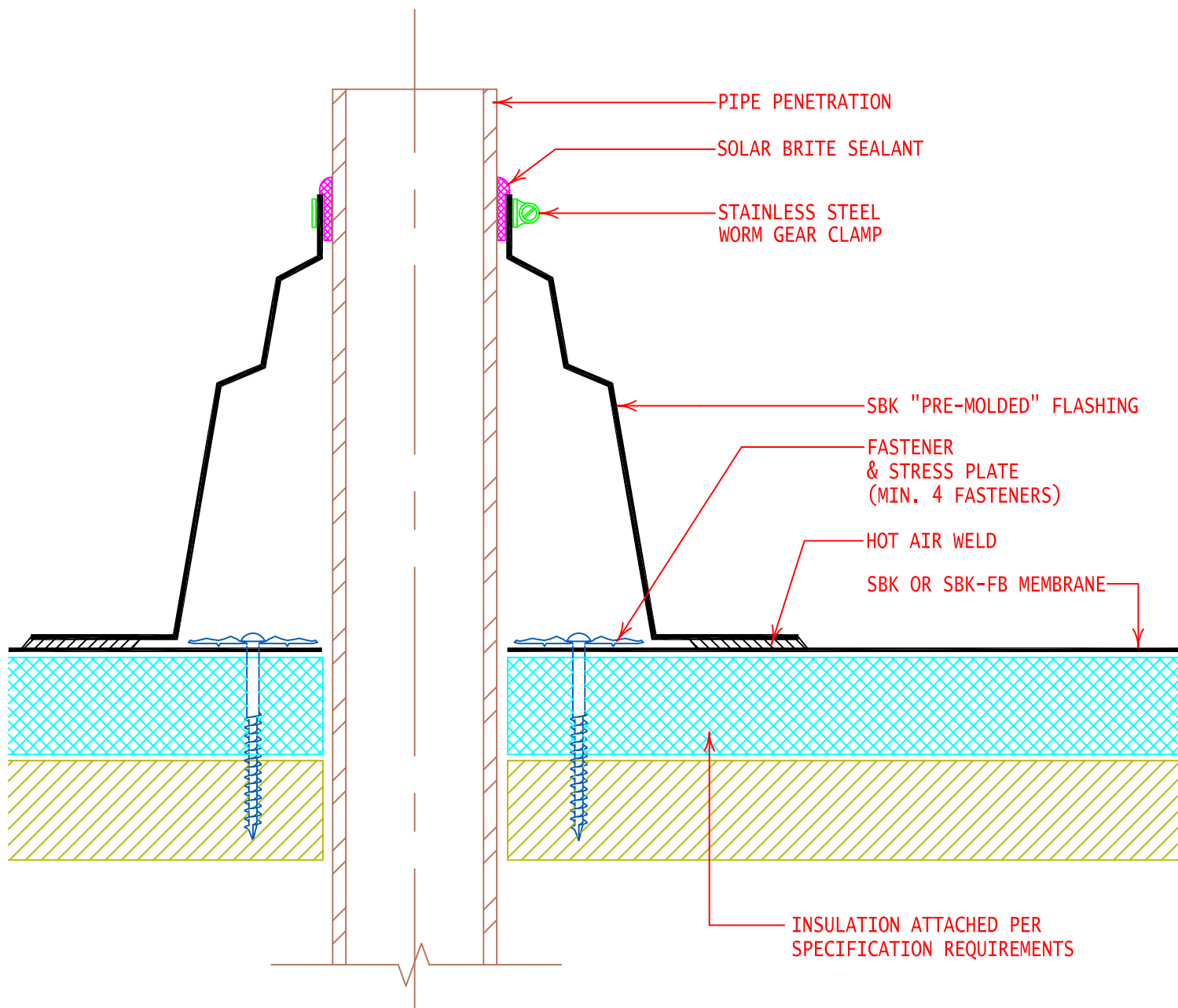
PRE-FORMED PIPE FLASHING  
ALTERNATE BASE RESTRAINT

REVISES DETAIL  
ALL PREVIOUS

ISSUE DATE  
03-01-07

DRAWING NUMBER  
SBK-DP8i





**Solar Brite**  
ROOFING SYSTEMS

GENERAL REFERENCE:

"SBK GS06"

APPLICABLE SYSTEMS:

"SBK MA06"

"SBK AD06"

"SBK BA06"

PRE-MOLDED PIPE FLASHING

REVISES DETAIL

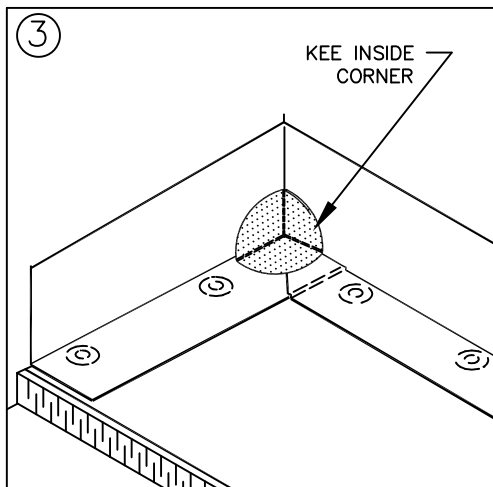
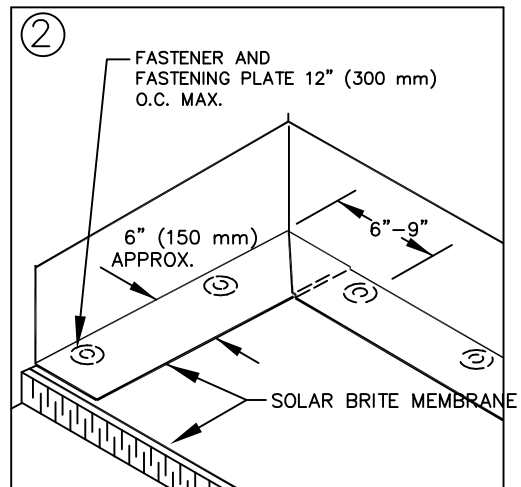
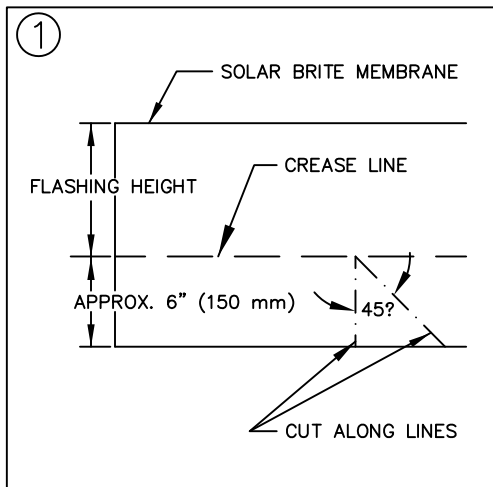
ALL PREVIOUS

ISSUE DATE

03-01-07

DRAWING NUMBER

SBK-DP3

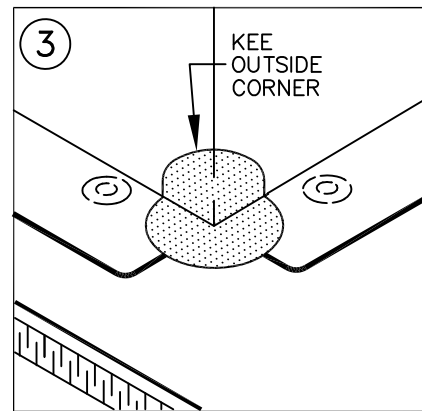
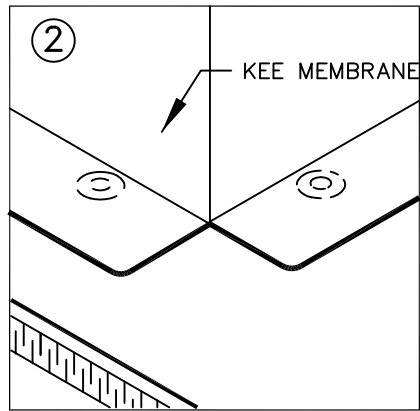
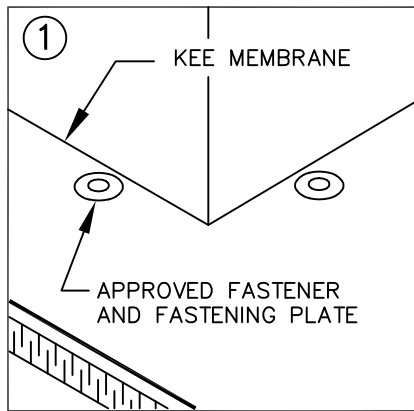


#### NOTES:

1. BEGIN INSTALLATION OF FASTENING PLATES 6" TO 9" (150 TO 230 mm) FROM THE CORNER.
2. POSITION FASTENING PLATES 1/2" TO 1" (13 mm to 25 mm) FROM EDGE OF MEMBRANE.
3. APPROXIMATELY 1/8" (3 mm) DIAMETER BEAD OF CUT-EDGE SEALANT IS REQUIRED ON CUT EDGES OF REINFORCED MEMBRANE.

PRE-MOLDED INSIDE CORNER FLASHING

SOLAR BRITE  
UNIVERSAL – 15A

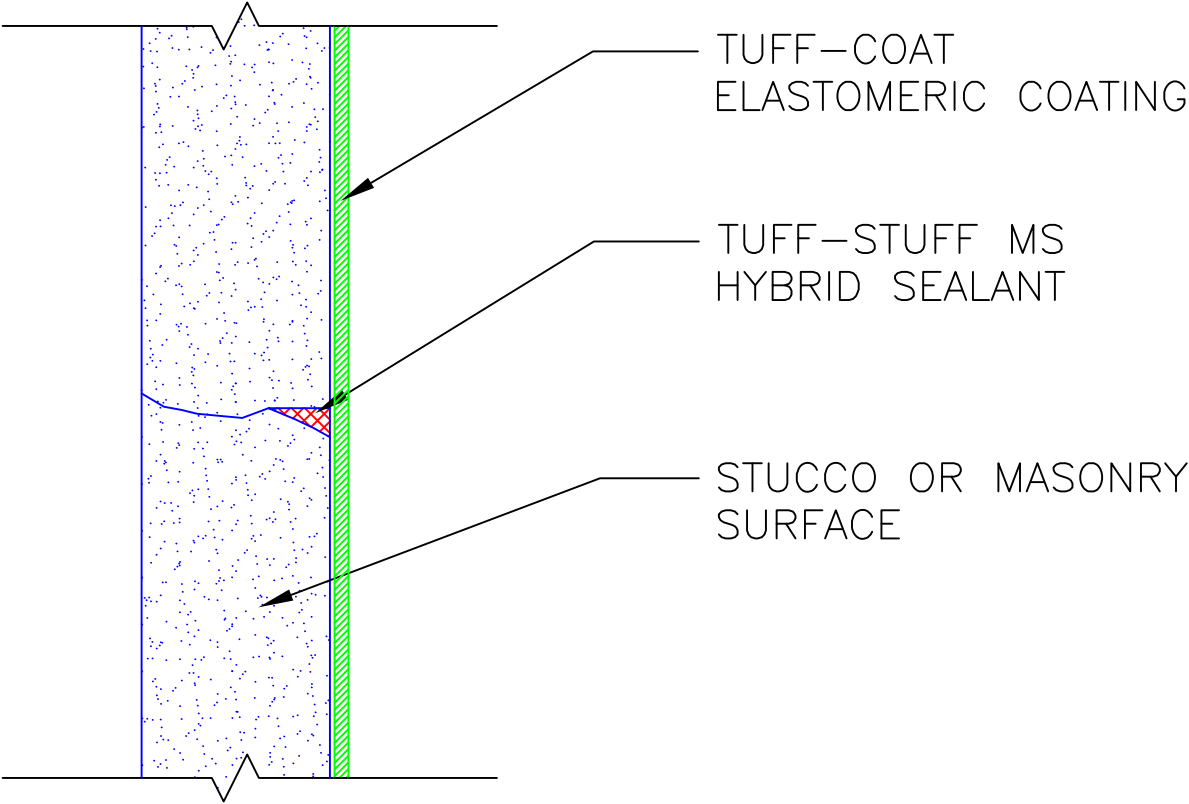


NOTES:

1. BEGIN INSTALLATION OF FASTENING PLATES APPROXIMATELY 6" (150 mm) FROM CORNER.
2. POSITION FASTENING PLATES 1/2" TO 1" (13 mm to 25 mm) FROM EDGE OF DECK MEMBRANE.

PRE-MOLDED OUTSIDE CORNER

SOLAR BRITE  
UNIVERSAL – 15C

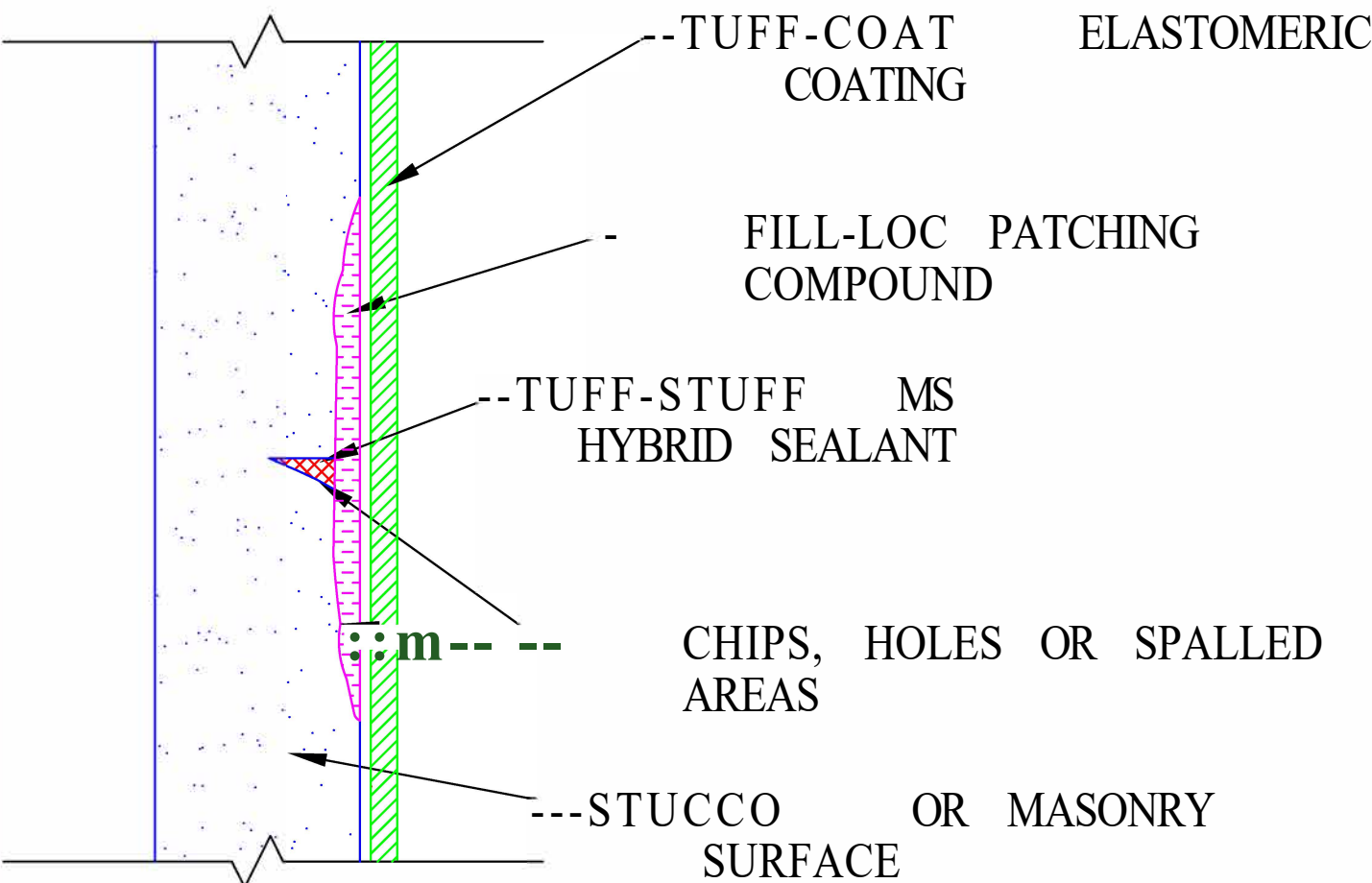


NOTES:  
CRACKS TO BE SEALED  
MUST BE 1/16" OR LESS



THE GARLAND COMPANY, INC.  
GARLAND CANADA, INC.  
THE GARLAND COMPANY UK, LTD

DETAIL:	SMALL CRACK REPAIR
	TUFF-COAT



THE GARLAND COMPANY, INC.  
GARLAND CANADA, INC.  
THE GARLAND COMPANY UK, LTD

DETAIL:

**SURFACE REPAIR**

TUFF-COAT