



ASIWININ

EWE MONIEN ANINIS USUN AN EPWENE PWANO WON EWE WUTUTUN FEBRUARY 13, 2024.

KOSE MOCHEN KOPWE WUTUT ME MWAN



Programen Asukun kena & Operations Levy

Ika pwe a apunguno, unusen ionin takisesin non neni kena epwene kukununo.

Ei esapw ew minafon takises.

School district kena ra kan anongonong won moni kena ra kan apunguno seni chon wutut ren an epwene pwanu momo kena ese kan wor monier seni ewe state. Ewe monien EP&O Monien Aninis a kan arapakan 15% ren an Longview we unusen monien foforon -- a wewe ngeni moni wunumwon chon angangen elementary kewe. An ese wor ei moni epwene wewen ren fakkun akukununon ngeni program kena, angangen aninis kena, me pwan chon angang kena ra kan fakkun namot ngeni chon sukunen Longview me pwan ewe nenien nonom.

NAMPAN PROPOSITION. 1

NAMPAN LONGVIEW SCHOOL DISTRICT. 122

ASIWININ REN ASOPWENON PROGRAMEN ASUKUN KENA ME PWAN MONIEN ANINISIN FOFORUN KENA

Ewe Board of Directors of Longview School District No. 122 ra mowuti Resolution No. 808 usun ew proposition ren an epwe anisi monien moni programen asukun me pwan foforon kena. Ika pwe a apunguno, ei proposition epwene amutata ewe District ren an epwe angei monien aninis seni ekkewe anapenon takises ra tapweto, asiwini ew monien aninis a sopweno, won meinis pisek ra tongeni takisesi me non ewe District, ren an epwe anisi programen asukun kena me pwan foforon kena rese kan wor monier seni an ewe State we amonien program ren poputan asukun.

IERIN IONIN KENA	EST. AWUKUKUN MONIEN ANINIS/\$1,000 CHECHEKIN MON	WUKUKUN MONIEN ANINIS KENA
2025	\$1.94	\$16,487,841
2026	\$1.91	\$16,982,477
2027	\$1.87	\$17,491,951
2028	\$1.83	\$18,016,709

Ew Awukukunon Fofor Ngeni

Ionin takisesin sukun kena ra wututuno seni non neniach repwene unusenapen kukununo. Ewe ionin monien aninis EP&O ra kan forino ren ar repwe ekisichok napeno ren ar repwe awukuk ngeni anapenon momo kena, nge ew chok; ionin takiese kena ren ewe 2022 Capital Projects and Technology Levy ra kan akukununo nupwen ewe chok attun fansoun (nengeni me non).

NGE IKA PWE EI PROPOSITION A KAN APUNGUNO?

Ewer
 Apw

Met en ka mochen sinei chomong usun ewe EP&O Asofofanin Monien Aninis?

Kuuta ponuwen kena ngeni kapaseis kena ra eisino iteiten me pwan chomong won achewe website ika seni eom skaneni ei QR code.



SKANIEI, FITI NOUMUWE CAMERA WON NOUMUWE SMARTPHONE

Minafon eimuowun awukukun monitonong ren chinap me terir kena

Chinap kena me pwan aramas mi terir kena repwe naf ren ew eimuowun takises. Chomong poraus usun programen aninis takises kena ra kan kaworeno won an ewe Cowlitz County Assessor we website seni churin: tinyurl.com/CowlitzExemption

Ewe Longview School District a kan ew district ren Wewefengenin Attun Fansoun angang non programen sukun kena, fofor kena, aninis kena, me pwan angang. Longview School District ese kan anongonong ar koput won met ir mwan ika fefin, sakkun aramas, met ra nuku, ar fan, anuwew, fonu ra etto me ie, jerir, sonfu me mwan, ika sakkur non son fu, sakkun nisouu ra sani, finier ren met ir ika aaittir, porausen met ir, terir, ika ewe nounoun emon konak a kaeo an epwe amwen ika monun aninis. Kich sia awora wewe fengenin atoto ngeni ew Boy Scouts of America me pwan ekkocho afiritan mwichen kukun semirit kena. Ika pwe a wor ew eom teriren inisum ika non mokurom ika a kan apopungonuk eom kopwe mochen aninisin eom kopwe atoto ngeni nenien sukun kena, program kena, ika aninis kena, kose mochen asinei ngeni ewe principal non ewe sukun. Ei district a kan achocho ngeni an epwe fofori ewe neni mi eimono seni koput me pwan anuwokusuno. Emon aramas ii a nuku pwe ii emon mwaan ika fefin a kan fen koput ngeni epwe kan kori ewe principal non ewe sukun. Non pachenong, ekkewe chon angangen district mi tapweto, a nom non 2715 Lilac Street, Longview, ra kan fen finita pwe repwe anganga kapaseis kena me pwan kapas ngaw kena ren tipingenin koput: Civil Rights Compliance Coordinator: Penny Andrews, Director of Human Resources (360) 575-7004 • pandrews@longview.k12.wa.us Title IX Coordinator /Section 504/ Student ADA Coordinator, Tony VanderMaas, Assistant Superintendent • (360) 575-7021 • tvandemaas@longview.k12.wa.us

AN LONGVIEW WE EP&O MONIEN ANINISIN KENA:

Aninisin Chon Sukun

- Arapakan 69 sense kena me pwan ekkocho awenewenenon nenien angang kena
- A kan napeno seni 65 sukun ra kan anisi chon angang kena
- Angangen Aninisin Konon Asukun Kena

Programen Asukun & Aninisin Classroom

- Akukununon saisin class kena
- Pisekin asukun kena, buuken sukun kena, buuken angang kena
- Pisekin non classroom kena
- An chon angang kaeo
- Tumunun sukun
- Wawan chon sukun

Fofor kena, Wurumwot & Anapenon

- Programen wurumwot kena, chon aaitit kena, chon ampang kena, me pwan wawa
- Programen music me art kena, mi pachenong foforon arts kena
- Programen mwan me murin sukun kena
- Mwich kena, foforon murin sukun kena, me pwan chon ekeit kena



KUUNA CHOMONG POROUS NON: longviewschools.com

KOSE MOCHEN ANIWINATO NOUM TAROPWEN WUTUT ME MWAN:



An Longview kewe Monien Aninis Seni non Nenien

Longview a kan angei ruwow monien aninis non nenien kena ina ra kan apunguno seni chon wutut kena non amwetenon ier kena. Ekkei monien aninis ra kan achufengen ren ar repwe awora namotenon nenien angei aninis kena rese kan wor monier seni state ika nenien aninis kena seni federal.



1 Programen Asukun kena & Operations (EP&O) Levy



Epwene tota ren asofosefaninon non February, 2024

EPWENE PWONU 2025-2028

Moni ren programen asukun kena mi auchea me pwan foforon sukun kena rese kan pwonupwonuno seni ewe state, usun chok angangen aninisi konon asukun kena, buuken sukun kena me pwan mettoch kena, sense me pwan chon angangen aninis kena, wurumwot kena, programen art kena, chon tumun me pwan kukun saisen class kena.

2 Monien Aninis Capital Projects & Technology Levy



Asofosefanino seni chon wutut non February, 2022

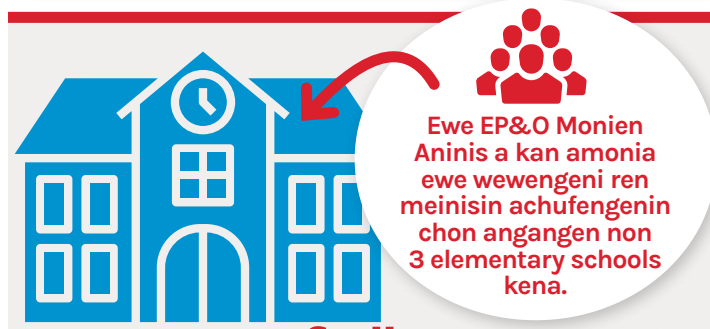
PWONU 2023-2026

Kinsau Ngonuk!

A moni ren tumunun me pwan anapenon imwen sukun kena me pwan nenien kena, asofonon technology kena, me pwan ekkoch momon neni kena rese kan unusen wor monier seni ewe muun.

Auchean Pungun Poraus kena Usun ewe Asiwininon Aninis Monien EP&O

- Ei monien aninis esapw ew minafon takises. Ewe kapaseni monien aninis a kan ew aninisin moni ren ruwanu ier ina epwene asiwinin ewe monien aninis mi wor iei ina epwene sopweno nesopwenon 2024.
- Unusen ionin takises kena ra wututuno non nenien repwene kukununo seni wukukun kena iei.
- Awukukun an Longview Public School kewe monien aninis ra kan non ei attun ra kan fan an ekkewe Cowlitz me Clark County awukukunon kena me pwan ra kan awukuku pwe ra kan kukununo seni ekkewe wukukun kena non ei attun.
- Ekkewe monien aninisin moni ra kan arapakan 15% seni an ewe district we budget non ew ier. (\$16-18 million)
- Ewe monien aninis non ei attun a kan amonia arapakan 69 sense kena me pwan ekkoch awenewenenon nenien angang kena.
- Ekkewe monien aninisin moni iei ra kan moni napeno seni 65 sukun ra kan anisi chon angang kena.
- Amonien monien aninis a kan moni ren arapakan 10% ren angangen aninisin konon asukun kena me pwan moni kena.
- Programen wurumwot kena, fofor kena, me pwan mwich kena ra kan arapakan unusen momono seni ewe monien aninis.
- Moni seni monien aninis kena ra kan anisi ne moni ren buuken sukun kena, buuken angang kena, me pwan ekkoch pisekin asukun kena.
- Angangen aninisin wawan sukun kena ra kan ekisichok amonien seni monien aninisin moni kena senin nenien.



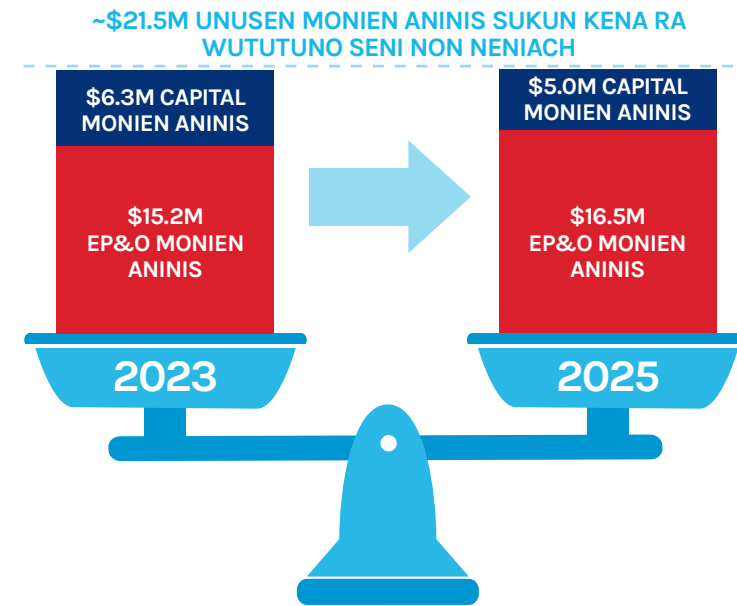
Met epwene fis ika ewe EP&O wututun Monein Aninis ese apunguno?

Ekkewe EP&O Monien Aninis ra namot ne amonia ren programen sukun kena me pwan napeno seni 130 wisen chon angang kena. Ekkei chon angang ra kan ewe chunapen ren ewe district me pwan awora wenewenon angangen aninis kena ngeni chon sukun kena non ewe foforon ren asukun, counselor, ekeiti, amongo, me pwan uwanon chon sukun kena, me pwan, tumunun ach sukun kena me pwan awora aninisin technical ngeni chon sukun me sense kena. Ew ese apungunon monien aninis epwen fakkun wattenon ren akukunonon monien unusen district iwe punguno non:

- Fakkun chokisinon sense kena me pwan chon sinenapen aninis kena ir ra kan awora asukun ren chon sukun kena.
- Chokisinon counselors me pwan aninisin semwenin non mekur kena ren ar repwe tori an ewe chon sukun kewe mochenin nein aramas me pwan memefien kena.
- Fakkun pokuweno ngeni programen wurumwot kena, mwich kena, foforon arts kena, me pwan ekkoch foforon chon sukun kena.
- Akisano pisekin non classroom kena, pisekin sukun kena, me pwan asofonon pekin sukun kena ren chon sukun me sense kena.
- Kukunonon monien ren tumun, tumunun neni kena, me pwan aninisin aramas.
- Wattenon saisen class kena.

Awukukanon Mochenin Chon Sukun me Chon Moni Takises kena

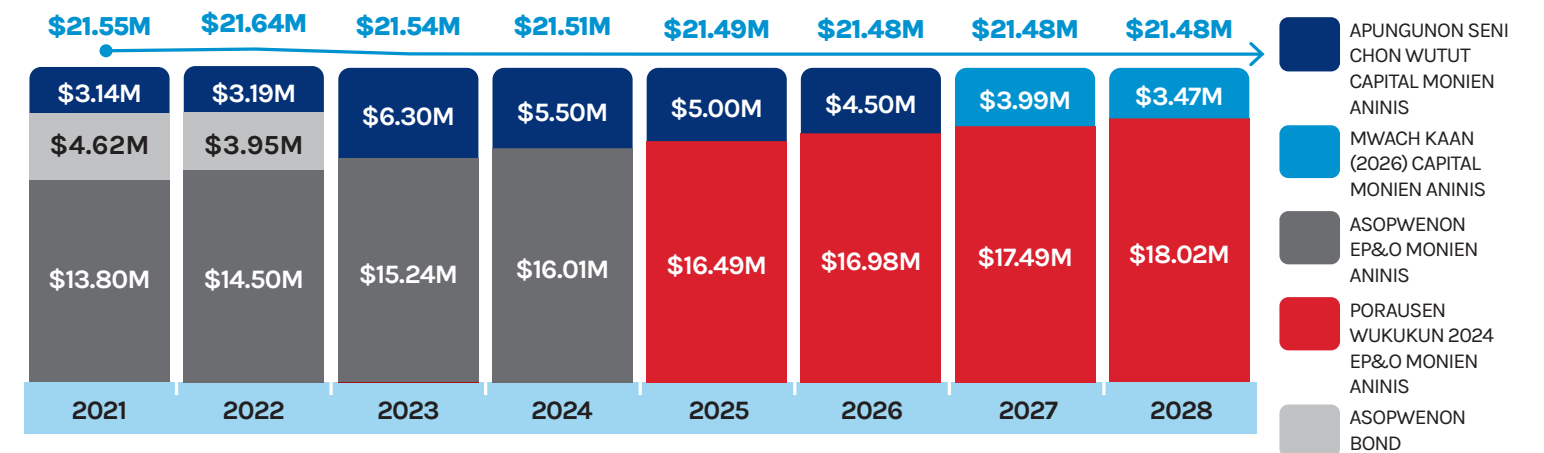
Ewe Asiwininon EP&O Monien Aninis epwene awora namoten aninis ngeni MEINISIN chon sukun kena nupwen ra kan pwan mefin ngeni chon moni takises kena non neniach.



A kan unusen ren awukukunon chok.

Seni non amonafichi, ekkewe wukukun ionin monien aninisin EP&O ra kan forino ren ar repwe ekisichok napeno ren ar repwe awukuk ngeni anapenon momo kena, nupwen non ewe chok fansoun, ionin takiese kena ren ewe Capital Projects and Technology Levy ra kan akukununo. I lwe seni ewe pungunon, unusen ionin takises sukun kena ra kan wututuno seni non neniach epwene akukununo me pwan nom non kukun seni ier kewe me mwan.

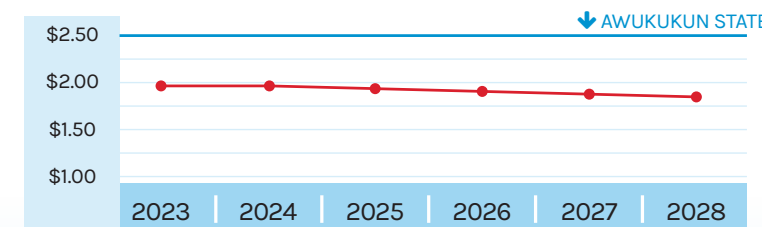
Wukukun Takisesin Sukun Kena Ra Ioni Ra Wututuno Seni Non Neniach:



Wukukun takises kena mwach kaan ra kan awukuku pwe repwene akukununo.*



Me non menauwen ewe EP&O Monien Aninis, awukukun takises kena ra kan awukuku pwe repwene akukununo seni \$1.94 ngeni \$1.83, chuen nom chok fakkun me fan ewe tekianapen a amumuta seni ewe state:



* Awukukun takises mwach kaan ra kan awuku me pwan ra kan ren \$1,000 chechekin mon pisek non ew ier. Ionin wukukun monien aninis kena rese kan siwin. Ewe awukukun wukukun takises a tongeni siwin ika pwe chechekin mon pisek a kan siwin ngeni napeno ika kukununo seni awukukun kena, nge wukukun ionin monien aninis kena resapw siwin.

An Longview we unusen wukukun takisesin sukun non neniach ra kan kukun seni aweve fengenin.



2023 Awukukun Awewefengenin Takisesin Regional ren \$1,000 seni Chechekin Wukukun Momo (mi pachenong meinisin monien aninisin school district kena me pwan bonds kena ra wututuno non neniach):

Longview Public Schools	\$2.79
Awukukun Cowlitz County School District	\$2.82
Awukukun Clark County School District	\$3.01