

A copublication of CTE & the CTE PTO

November 9, 2023

CHERRY TREE CHATTER

KEY DATES

November 10

Veterans Day Program

November 13-17

All Books for Change
Collection Competition

November 15-21

Scholastic Book Fair

November 17

PJs and Cocoa

November 20

Grandpersons' Night
Open House

November 22-24

No School:
Thanksgiving Break

Nov 29 - Dec 1

Elf Workshop

For announcements, updates, and reminders for CTE activities,
follow Cherry Tree PTO on social media!

[Facebook](#) | [Twitter](#) | [Instagram](#)

For a working calendar of
events, please click [HERE](#).



SAFETY MESSAGE FROM OFFICER GREGORY

This is a friendly reminder for a couple of carpool safety concerns I've observed at pick up and drop off times. All seatbelts for each occupant must be fastened at all times your vehicle is in motion. Upon morning arrival, please make sure to wait in the single cone lane until the vehicles in front of you move forward. School staff is there to assist younger students exit the vehicle; however, please make sure everyone is ready to exit the cars efficiently to keep the line moving safely. Please reach out if you have any questions or additional concerns.

Thank you for your contributions to keep carpool safe!



ELF WORKSHOP



Thank you for signing your students up for this year's Elf Workshop!

A message with a parent consent form and payment instructions was emailed this past Monday, November 5th, to parents who registered their students. Check your email, and follow instructions to finalize registration.

Didn't get a chance to sign your student up? There are a few spots left!

Wednesday, November 29

Friday, December 1

HELP NEEDED! We still need helpers to assist with Elf Workshop! Your responsibility will include assisting students follow their teacher's instructions to complete the craft. Sign up [here](#).

*Note that if your student is not signed up for a craft the day that you volunteer, they can attend with you; we will have additional crafts & activities for them to work on during the Elf Workshop time slot.

VETERANS DAY PROGRAM

CTE's Veteran's Day Program is
Friday, November 10th, at 8am.

Students are encouraged to wear
red, white, and blue!

GRANDPERSONS NIGHT

November 20th, 4-6pm

Invite your Grandpersons to accompany
your students to Cherry Tree for this very
special event evening event!

Activities will include games & crafts
in the cafeteria & gym.

Treats will be provided, and the Book Fair
will be open for shopping!



Want to help?

<https://www.signupgenius.com/go/20F054AA9AA2EA5FC1-44823048-grandpersons>

SCHOLASTIC BOOK FAIR

Scholastic Book Fair stars next week!

All for Books Coin Collection

Monday - Friday, November 13th - 17th

Book Fair shopping days begin Wednesday, November 15th.

Students will shop during their media time.

The PTO is again providing \$5 for every
student to use toward the purchase of a
book! These funds can be used along with
your student's e-wallet!

Don't forget to set up your student's eWallet
account for cashless, stress-less shopping.

Friends and family can even contribute
funds! [Click here to learn more and set up an
eWallet!](#)

Join us for our special events!

Friday, November 17th, 4-7pm: PJs & Cocoa!

Teachers will be reading stories while you
shop at the book fair with your family. Wear
your cozy pajamas and enjoy hot cocoa, too!

Monday, November 20th, 4-6pm

We are open during the Grandperson's Open
House! Bring your GRANDperson to shop and
show off our great media center!

Volunteers are STILL needed!

Join us - sign up [here](#).

Time to spare in the afternoon/evening of
November 17th or November 20th?
Those are times we really need you!

 **BOOK FAIR**

Be true to your
SHELF



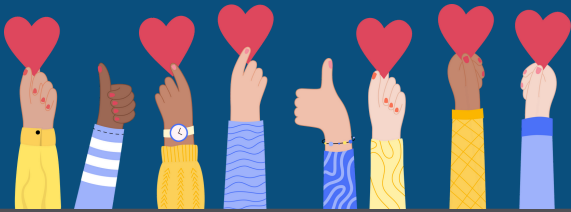
VOLUNTEER

We need your support! Cherry Tree PTO needs your time and talent to make this Fall's events and initiatives successful!

Parents and grandparents, please fill out the Google Form below to indicate interest in volunteering this Fall.

You will need to complete and pass a background check prior to volunteering. If you have any questions, please e-mail the PTO at cherrytreeppto@gmail.com

VOLUNTEER INTEREST FORM



TREASURER'S REPORT

The current [Treasurer's Report](#) is available, as well as previous reports. Learn how your PTO dollars were used to enhance students' experiences at CTE.

Budget for the 2023-2024 school year can be viewed [HERE](#).

SMALL BUSINESS DIRECTORY

Do you own a small business?
CTE wants to support you!

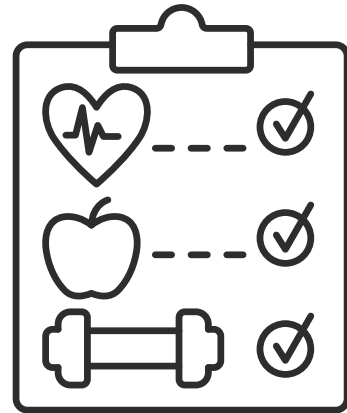
Click [HERE](#) to add your business to our CTE small business directory!



WELLNESS WEDNESDAYS

Wellness Wednesdays needs your help!

Please [CLICK HERE](#) to volunteer
(background check required)



2023 – 2024 PTO SLATE

Click [HERE](#) to view the PTO Slate for the Executive and General Board for the 2023-2024 school year.

Thank you to all parents who are willing to fill these roles!

CTE MEMBERSHIP TOOLKIT



Have you signed up for the optional [Cherry Tree Directory](#)?

If you are already a member, please update your child's teacher!

Once you create a Membership Toolkit account, you will have access to the directory and upcoming calendar events.

This is a free, optional directory for all Cherry Tree families.

HOLIDAY LIGHTS RECYCLING DRIVE

HOLIDAY LIGHTS RECYCLING DRIVE

Recycle old,
broken and unused
strings of lights!

This environmentally-friendly
program offers an alternative to
sending strands of holiday lights
to a landfill.

SPONSORED BY:

 **Carmel Utilities**



White's **ACE** Hardware
and Garden Center
Great Service - Great Price

Drop-off at all Carmel Clay Schools
STARTING: MONDAY, NOVEMBER 20

Collection ends on Wednesday, December 20

JOIN THE CCS TEAM



**CARMEL CLAY
SCHOOLS**
TOGETHER WE ACHIEVE

JOIN OUR TEAM

SUBSTITUTE TEACHERS

- Work in a professional environment with a flexible schedule you control
- Positively impact the education of students in your own community
- Have the ability to select your preferred school site
- Daily Rate is \$80- \$90



For more information, contact Kelli Hackett at
khackett@ccs.k12.in.us or (317) 844-9961.



Visit our website

www.ccs.k12.in.us

APPLY HERE WWW.APPLITRACK.COM/CCS/ONLINEAPP/

ASCENSION CARMEL CLAY SCHOOLS STUDENT THERAPY SERVICES

Ascension behavioral health partners with Carmel Clay Schools to provide on-site counseling services and skills training to children and families. Services are provided all year (including school and summer breaks).



Ascension



Parents can call Ascension directly at 317-338-4951 to register and schedule your child with one of our licensed school-based counselors.

Ascension therapy services are administered through Ascension Stress Center and billed to the family's insurance. Financial assistance options are also available.

EASY, NO COST WAYS TO SUPPORT CHERRY TREE



Cherry Tree PTO is thrilled to announce a fundraising opportunity with Shutterfly.

With their help, we've created a custom online storefront where you can shop the extensive Shutterfly collection, and for every purchase made, Shutterfly will donate 8% to our Organization. Plus, you can even use applicable Shutterfly discount codes!

Please feel free to share this website with friends and family!

<http://cherrytreepto.shutterflystorefront.com/>



Kroger has a community rewards program!

Log in to your Kroger account and choose Community Rewards to add Cherry Tree Elementary PTO from the list of organizations.

Kroger donates a percentage of your spending to our school.

This is an easy no-cost way to support Cherry Tree!
Register for these programs today!



CHERRY TREE REMINDERS



PARKING

A new city ordinance now restricts using neighborhood streets near school property as a school drop off alternative. If you are using a car to get children to/from school, please follow the procedure to bring them in/pick up on school property in the lot to the east of the school/facing Hazel Dell Pkwy.



CARPOOL

We do our best each day to keep the line moving in an efficient way. You can help by having students ready to exit the car upon arrival, pulling all the way down in the morning to allow more cars to drop off and by having all students exit the passenger side of the car for safety. Thank you for your partnership in helping us welcome and safely deliver home 700+ students each day.



CHROMEBOOKS

Please remember to charge your Chromebooks every night! They are a very important part of our daily routine and need to be charged and ready to go at the beginning of each day. In addition to being charged it is very important they are brought to school each day. Unfortunately, we will no longer be able to offer loaner computers to students who forget them at home.

*Also, please remind your students to treat them with special care. We have seen an increased number of broken devices, and we are very limited in our inventory of replacement Chromebooks.



ATTENDANCE

Cherry Tree Elementary is now using School Dismissal Manager to report absences (both in advance and same-day), late arrivals, and appointments. This online tool is preferred to phone calls. Visit www.schooldismissalmanager.com.



SUPPORT CHERRY TREE

Box Tops are a simple way to support Cherry Tree! Just download the Box Tops for Education App and scan your grocery receipts after you shop! Box Tops donates \$0.10 for each participating product you buy and there are always new bonus box tops opportunities! Having trouble remembering to scan your receipts? Set a customized scan reminder through the app that fits your shopping schedule!

Kroger has a community rewards program as well! Log into your Kroger account and choose Community Rewards to add the Cherry Tree Elementary PTO from the list of organizations. Kroger donates a percentage of your spending to our school.

These are simple ways for friends and families to support the Cherry Tree PTO at **NO COST** and they are an integral part of our fundraising efforts. Thanks for your support!



STUDENT BELONGINGS

Be sure to label your student's personal belongings, such as coats/jackets, water bottles, lunch boxes, etc. If an item is missing, please be sure to have your student check the Lost and Found!

