

WMS Paw Print

2023.11.03

Bringing you the middle school scoop...

Principal's Message

November 3, 2023

We're in full gear as we near the end of the first quarter. Scroll below the upcoming events and announcements for highlights of great in-school learning and after-school opportunities. All of these extensions of learning are designed to make school come alive for students. Encourage your child to get involved.

Our Principal's Leadership Group met for the first time today. A theme that has been growing over the past few years is *leadership through service*. In addition to representation, voice, and advocacy, volunteer leaders work collaboratively to develop fun initiatives that change their school the way they want to see it change. We'll be on the lookout for more leaders.

KEEP THE PAW PRINT BOOKMARKED!

Once you have access to the newsletter it will update automatically, so go back at any time to see the latest version.

Older versions will be archived on our <https://wms.mtplcsd.org/parent-resources/httpsmtplcsdorgfinalsitecomfsadminsitempages1574>



A glance at the upcoming week...

Week of 11/6 - 11/10

Monday - Day A

- 2:15-3:15 pm: Peer Tutoring (Math)
- 2:25-3:15 pm: Spanish Club (All Grades)
- 2:30-3:30 pm: Crew Meeting for Elf. Jr.
- 2:45-4:00 pm: Science Olympiad

- 2:45-4:30 pm: Musical Elf Jr. Full Cast Rehearsal

Tuesday - Day B

- Early Dismissal @ 11:15 am - No after-school activities

Wednesday - Day C

- 2:15-3:15 pm: Peer Tutoring (ELA and Science)
- 2:20-3:20 pm: Environmental Club
- 2:30-3:30 pm: Crew Meeting for Elf. Jr.
- 2:30-3:15 pm: Jazz Band
- 2:30-3:30 pm: Musical Elf Jr. Dance Rehearsal
- 2:45-4:00 pm: Science Olympiad

Thursday - Day D

- Wear Red, White and Blue for Veterans Day Observance
- 2:15-3:15 pm: Peer Tutoring (Social Studies and LOTE)
- 2:30-3:30 pm: Art Club Meeting
- 2:30-3:30 pm: Musical Elf Jr. Rehearsal (Full Ensemble)

Friday - Day E

- School Closed for Veterans Day

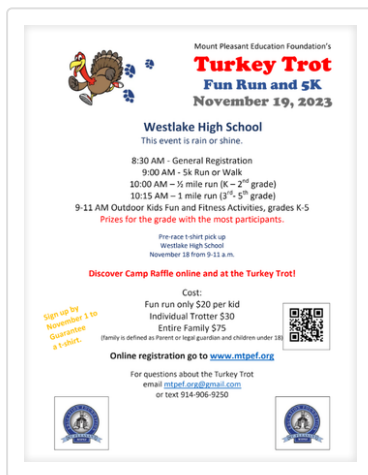
Upcoming Dates:

- November 16th - 2 Hour Delay Schedule (Parent/teacher conferences)
- November 19th - Turkey Trot
- November 22nd - Early Dismissal @ 11:15 am
- November 23rd-24th - Thanksgiving Recess: School Closed

Important New Information, Upcoming Events, and Reminders

November 19th - Turkey Trot 5K

Come join this fun Mt. Pleasant Education Foundation Event. In addition to the run, there are fun activities for Grades K - 5.



Sponsor the Turkey Trot

If you would like to be a sponsor please go to www.mtpef.org for more information.



PTA Spiritwear

Check out some great new spirit wear with an updated design and color of the sweatshirt. The Sale ends on November 17th to ensure holiday delivery.

LINK: <https://wms-pta-sweatshirt-sale-copy-3498.cheddarup.com/>

It's a Friday Tradition for our students to show their spirit and there's no better way than this Westlake Sweatshirt.



Principals' Leadership Group - Snapshots of What's Happening at WMS



A child's construction on a blue carpet using sticks, orange pipe cleaners, and clothespins. The construction is a central cluster of sticks and pipe cleaners, with several clothespins attached to the pipe cleaners. A name tag is visible in the bottom right corner of the image.

Mathematics

A photograph of three children, two boys and one girl, sitting on a dark blue patterned rug. They are all smiling at the camera. In front of them on the rug is a completed paper airplane made from orange and white paper, with many small white sticks (toothpicks) attached to its wings and body. There are also several loose white sticks and small orange paper scraps scattered around the plane. The boy on the left is wearing a dark blue long-sleeved shirt. The girl in the middle is wearing a grey long-sleeved shirt. The boy on the right is wearing a black long-sleeved shirt with white text that includes 'STORY-NEW V'. The background shows a wooden cabinet and a green chalkboard.

And Design Challenges

The diagram illustrates the Engineering Design Process as a continuous cycle of 16 steps, organized into four main phases around a central hub. The central hub is divided into four quadrants: **Inquiring and analysing** (top), **Developing ideas** (right), **Creating the solution** (bottom), and **Evaluating** (left). The 16 steps are arranged in a circular flow around this hub, with arrows indicating the sequence. The steps are color-coded to group them into four main categories: **Identifying and Analysing** (light blue), **Developing and Planning** (yellow), **Constructing and Testing** (green), and **Evaluating and Improving** (red).

- Identifying and Analysing (Light Blue):**
 - Identify and prioritise the research
 - Analyse existing products
- Developing and Planning (Yellow):**
 - Develop a design brief
 - Develop a design specification
 - Develop design ideas
 - Present the chosen design
 - Develop planning drawings/ diagrams
- Constructing and Testing (Green):**
 - Construct a logical plan
 - Demonstrate technical skills
 - Follow the plan to create the solution
 - Justify changes made to the design
- Evaluating and Improving (Red):**
 - Design testing methods
 - Evaluate the success of the solution
 - Explain how the solution improved
 - Explain the impact of the solution
 - Explain and justify the need

Design Cycle

Handwritten notes on a whiteboard:

- 2/1/365
- Principals Leadership Group
- COMMUNITY LEADERSHIP
- DESIGNING LEARNING
- CHALLENGE LEARNING
- APRENTICE
- PROTEGE-TEAM IDEAS
- SCREEN IDENTIFICATION
- RESEARCH
- DESIGNING "TEAM"
- RESEARCH DESIGN
- LOCATION
- IDENTIFY HUMAN RESOURCES
- TECHNOLOGICAL
- FINANCIAL
- ENVIRONMENTAL
- WHITE BOARD
- PAINTED ROCKS
- PAINTED ROCKS

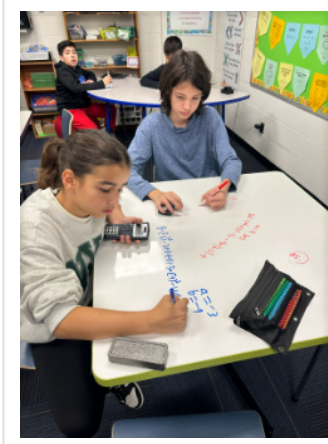
Principal's Leadership Group

PLG met for the first time this year and was hard at work developing ideas and creating solutions. Students were very interested in transforming their school environment as a means of better sharing information. Next comes the hard part of leadership - putting ideas into action. Stay tuned!



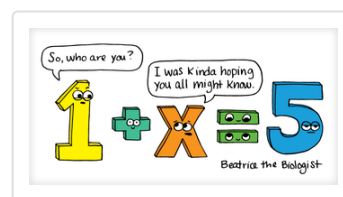
7th Grade Math Lab

Our 7th-grade students are working together to evaluate more challenging algebraic expressions.



Collaboration

As collaborators, students increase skills and knowledge while working towards a common goal.



Math Lab

Thank you to Ms. Hagey for providing pathways to higher levels of learning.



Environmental Club

The Environmental Club Students are out and about identifying species all around campus. It is great to see all of our clubs disconnecting from devices, getting outdoors, working together, building, and socializing. Thank you, Mr. Hall and Ms. Sullivan.



Science 8

Science 8 is learning about the body's systems and dissecting chicken wings. Thank you Ms. Laccetti for making Science so hands-on and tangible.



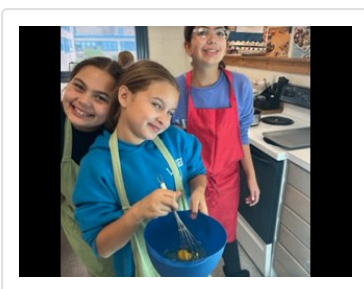
Art Club

Art Club is an immersive creative club where students can embark on personal projects and group projects using various materials. They are encouraged to be imaginative and inventive under the direction of Dr. Cowles. Students can explore new ideas and feel comfortable and relaxed in a supportive environment.



Spanish Club

Ms. Rama is teaching students about Spanish Culture. Currently, students are making piñatas in the Spanish Club. Can you guess what the final products will be based on the shapes? (Hint: think food).



Bakers Club

Our Bakers Club kicked off its year by preparing cookies for The Board of Education last month. We're looking forward to more treats as the year goes on. Thank you Mr. Yaeger!



Westlake Wildcat Sports

Please check the Westlake Wildcats Sports Calendar for ANY updates or changes.

CALENDAR: <http://www.westlakewildcats.org/calendar>

Athletic Office contacts:

Shawn Baumann, Athletic Director at sbaumann@mtplcsd.org

Maria DiNota, Athletic Secretary at mdinota@mtplcsd.org

Mount Pleasant Central School District Website

