

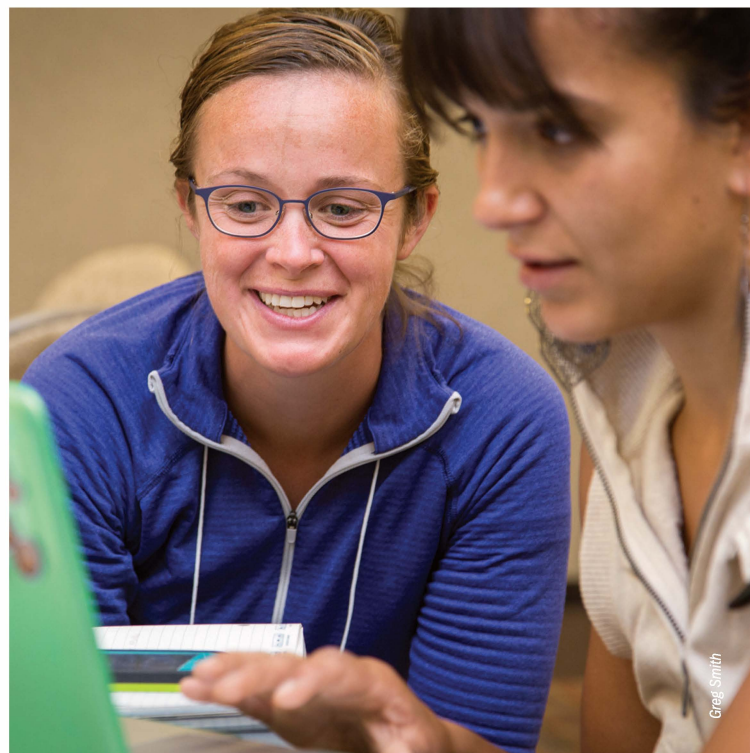
# Master of Arts in Education

School of Graduate Studies



## GENERAL DESCRIPTION

Western's M.A. in Education is completed entirely online with a yearlong classroom placement as the lab. The program helps those who want to make a mid-career shift to teaching, teachers seeking additional credentials and educators who want to become principals. Both licensed and non-licensed teachers and principals have many options—all of which are aligned to state and national standards.



## THE PROGRAM

### FUTURE TEACHERS:

#### **M.A. in Education + Teacher Residency Program**

Students in their yearlong residency are matched with a mentor teacher in a K-12 classroom and take online courses as practicing Residents. Students may complete their residency anywhere in the world.

#### **M.A. in Education + Alternative Licensure Program**

Students who currently teach or have secured a full-time teaching position in a Colorado K-12 school will work under an Alternative License (granted by their school and the CDE) while completing online coursework.

Following successful completion of the licensure year for either program, students complete 16 credits of online coursework to earn their M.A. in Education.

### ALREADY LICENSED TEACHERS:

#### **M.A. in Education + Educator Effectiveness Emphasis**

A personalized degree program designed to help teachers meet identified professional goals and improve their classroom effectiveness, as well as show growth on their district's performance evaluations. Optional added endorsements include: Culturally and Linguistically Diverse, Reading Specialist, Reading Teacher and Special Education.

#### **M.A. in Education + Principal Licensure Program**

Students earn their principal license by working with a mentor in their school while taking online coursework. This program consists of a clinical licensure preparation year followed by an optional second year of coursework to complete the degree.





## QUICK FACTS

- Western's coursework continuously aligns to meet state and national quality standards, often before the standards go into effect.
- The 30-credit Educator Effectiveness emphasis is the first of its kind in Colorado and has been praised by the state Department of Education.
- The M.A. in Education program consistently has a 96% employment rate in education fields upon completion.
- The program is affordable and costs less than peer institutions'.

## PROGRAM EMPHASES

**Teacher Leadership:** Teacher leaders are excellent educators, recognized for leadership skills and holding a lifelong learning orientation. Teachers accomplish this by working with colleagues and administrators on district-level professional development projects.

**Reading Leadership:** Reading leaders provide literacy guidance and expertise to classroom teachers as well as informing school and district literacy assessment programs. They develop and conduct in-service programs related to literacy, know federal and state policies on literacy and have advanced knowledge about scientifically based reading programs.

**K-12 Online Leadership:** Online teacher leaders provide professional guidance and expertise to virtual schools or blended programs on effective curriculum, instruction and assessment. They work effectively with other online instructional staff to meet the targeted learning needs of all students.

**Education Administrator Leadership:** Education administrator leaders create a common vision and are change agents who improve conditions for learning. They collaborate with teachers and employees in their building, so that the school as a whole makes better decisions and is committed to continuous improvement.

**Educator Effectiveness:** Educator Effectiveness is an online emphasis through which already licensed teachers use their own performance evaluation to identify strengths and weaknesses. Course sequences are customized to promote growth in those areas of practice while earning a master's degree. Coursework may be completed in as little as one year. Students can add endorsements in Reading Teacher, Reading Specialist, and CLD.

## WANT TO LEARN MORE?

Email, call or visit [western.edu/maed](http://western.edu/maed)

### M.A. in Education Admissions

Ed\_admissions@western.edu  
970.943.2045