



Branksome Hall Asia

At a Glance

2023-24

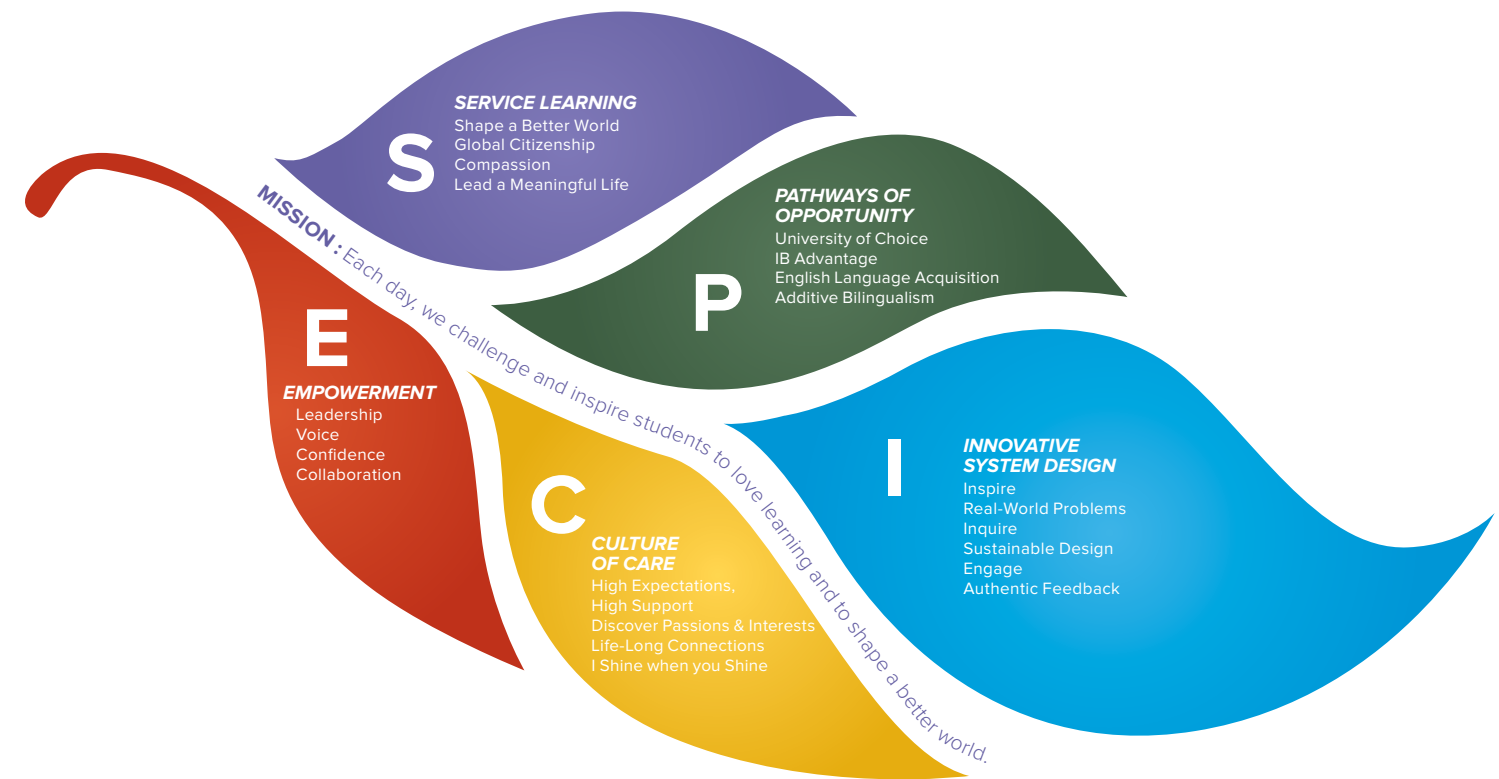


BRANKSOME
HALL ASIA

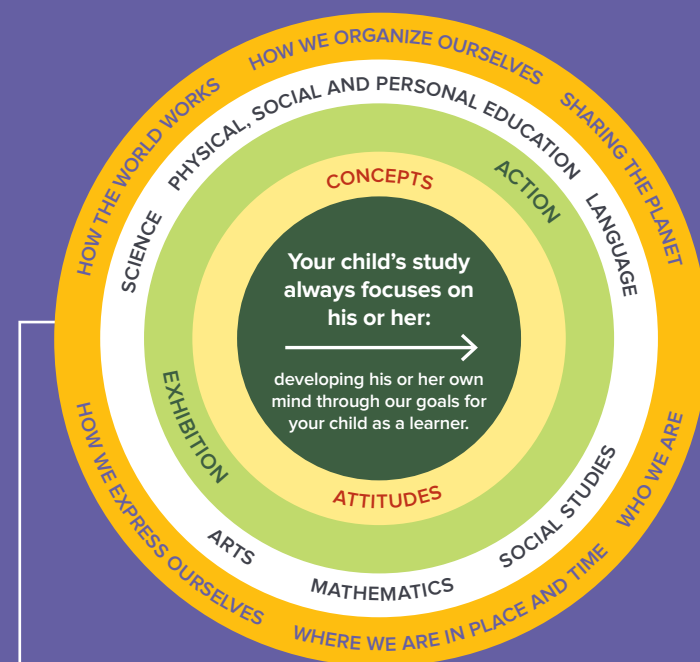
Jeju Island, South Korea

Branksome Hall Asia is...

- The only IB World School in Jeju offering three IB programs
- Coeducational in Junior School
- Single sex environment starting in Grade 6
- Offering a boarding program for girls starting Grade 6
- Encouraging students to find solution together and calibrate the answers through collaboration
- Focused on identifying and solving real-life problems
- Fostering future leaders that shape a better world

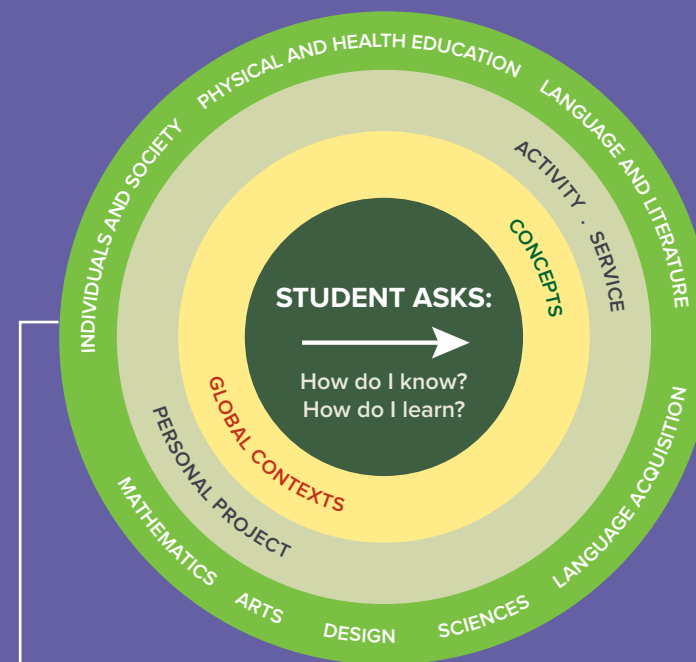


PRIMARY YEARS PROGRAM



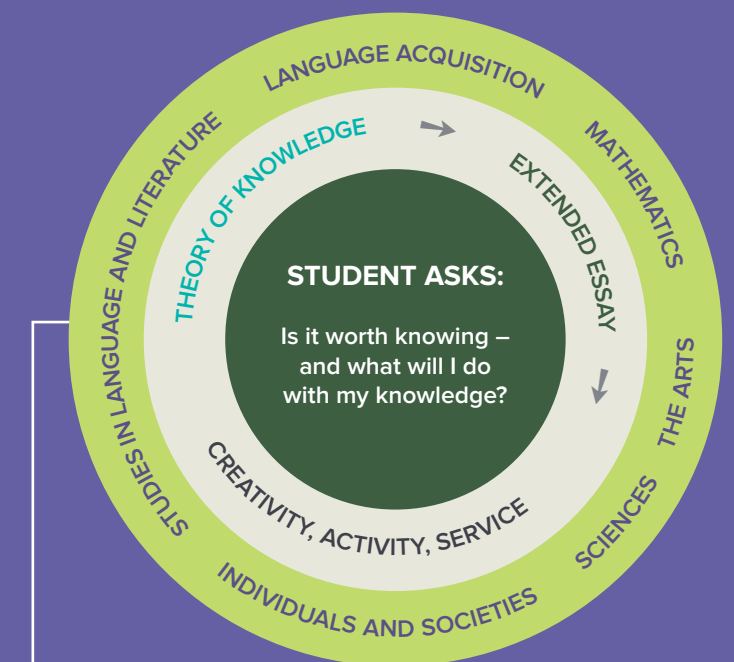
- Inquiry based learning
- Foundation for curiosity
- Learn to think, think to learn

MIDDLE YEARS PROGRAM



- Global context
- Connecting the dots between diverse concepts
- Creating insight

DIPLOMA PROGRAM



- Demonstrate knowledge
- University level research and writing
- Excellent results for future pathway

Branksome Hall Asia by Numbers

1,225

NUMBER OF
ENROLLED
STUDENTS



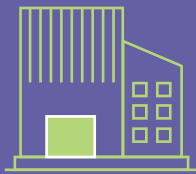
36

IB DP

AVERAGE SCORE
OF CLASS OF 2023

90,350

SIZE OF THE
CAMPUS IN
SQUARE METER



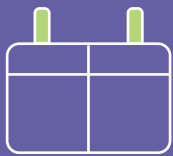
500



NUMBER OF
EXTRACURRICULAR
ACTIVITIES OFFERED
PER YEAR

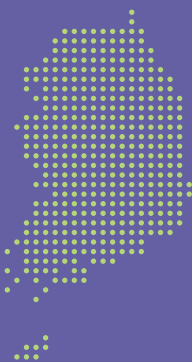
85

PERCENTAGE OF
2023 GRADUATES
WHO **EARNED MORE
THAN 36 POINTS** ON
IB DIPLOMA SCORE



2012

YEAR
ESTABLISHED
IN JEJU,
KOREA



100%

PERCENTAGE OF 2023
GRADUATES THAT EARNED
IB BILINGUAL DIPLOMA

68



PERCENTAGE OF
FACULTY WITH
GRADUATE
DEGREES AND
BEYOND

120

YEARS OF
HERITAGE FROM
ITS **SISTER SCHOOL**
IN TORONTO, CANADA



95 %

2023 GRADUATES
WHO ARE ACCEPTED
TO **QS WORLD'S TOP
100 UNIVERSITIES**

100%

PERCENTAGE
OF 2023
GRADUATES WHO
EARNED **IB DIPLOMA**



566

TOTAL NUMBER
OF **GRADUATES**
SINCE ESTABLISHMENT

IB DP Courses Offered

| GROUP 1 | GROUP 2 | GROUP 3 | GROUP 4 | GROUP 5 | GROUP 6 |
|----------------------------------------------------------------------------------------------------------------------|---------------------------------------------------------------------------------------------------------------------|------------------------------------------------------------------------------------------------------------------------------------|------------------------------------------------------------------------------------------------------------------------------------------------------------|---------------------------------------------------------------------------------|---------------------------------------------------------|
| Language & Literature | Language Acquisition | Individuals & Societies | Experimental Sciences | Mathematics | The Arts |
| English A: Language & Literature (HL/SL) Korean A: Language & Literature (HL/SL) Chinese A: Literature (HL/SL) | English B (HL) Mandarin Ab Initio: (SL) Pamoja French Ab Initio: (SL) Pamoja Spanish Ab Initio (SL) Pamoja | Business Management (HL/SL) Economics (HL/SL) Environmental Systems & Societies (SL) Geography (HL/SL) History (HL/SL) | Biology (HL/SL) Chemistry (HL/SL) Design Technology (HL/SL) Environmental Systems & Societies (SL) Physics (HL/SL) Computer Science (HL/SL) | Math Analysis & Approaches (HL/SL) Maths Applications & Interpretations (SL) | Music (HL/SL) Theater (HL/SL) Visual Arts (HL/SL) |

Branksome Hall Asia IB DP Results

| Year | 2023 | 2022 | 2021 | 2020 | 2019 | 2018 | 2017 |
|----------------------|------|------|------|------|------|------|------|
| Number of Graduates | 80 | 89 | 61 | 67 | 81 | 71 | 49 |
| Our IB Average Score | 36 | 36 | 38 | 37 | 35 | 36 | 36 |



International School of the Year, ISC International School Awards 2021
Community Initiative, ISC International School Awards 2021
Initiative to Support Students as Future-Thinking Innovators, ISC International School Awards 2020

CASE

Students realize their potential and nurture their unique talents outside of the classroom through our Creativity, Activity, Service and Enrichment (CASE) activities. A wide range of opportunities complement the academic curriculum and enrich the lives of students by strengthening their creative thinking, problem solving, creative judgment, aesthetic sense, physical development, social interaction, and leadership skills.

Branksome Hall Asia’s co-curricular program with more than 500 options per year

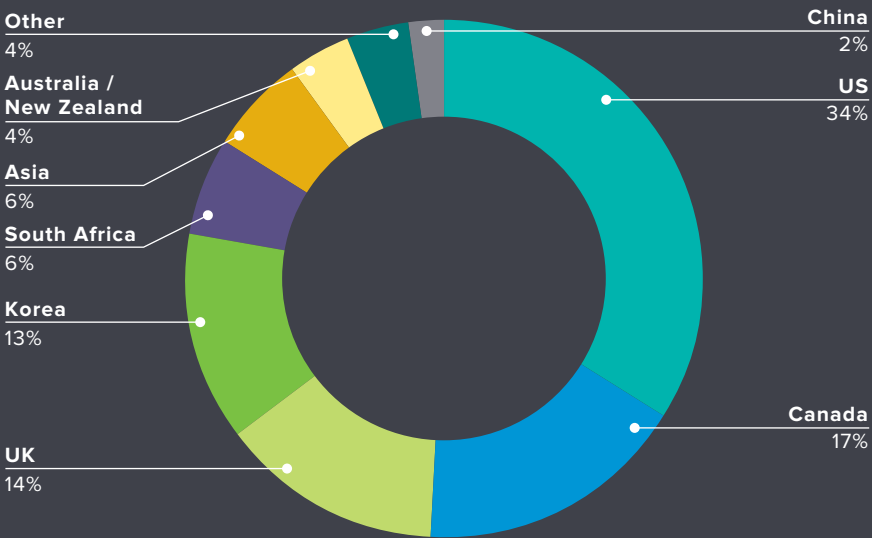
| | |
|------------|-------------------------------------------------------------------------------------------------------------------------------------------------------------------------------------------------------------------------------------------------------------------------------------------------------------------------------------------------------|
| CREATIVITY | Branksome TV, Choir, Dance, Graphic Design, Model UN, Symphony Orchestra, Photography, Robotics, Studio Art (Visual Design), TEDx, Theater, Ballet, Calligraphy, Digital Storytelling, Production, String Academy, Vocal Academy, K-Pop Composition, K-Pop Vocal Training,etc. |
| ACTIVITY | Volleyball, Basketball, Soccer, Golf, Swimming, Cross-country, Track & Field, Hockey, Equestrian, Archery, Fencing, Ice Hockey, Speed Skating, Figure Skating etc. |
| SERVICE | Animal Rights and Protection, Councils, Environmental Protection, Health and Medical Awareness, International Service Trips, Local Community Initiatives, Music In Hospitals, Peer Mentoring, Red Cross Youth, Sustainable Development, Tutoring in the local community, UN Girl Up, UNESCO and Human Rights, Women’s Empowerment, World Hunger, etc. |
| ENRICHMENT | Chess, Global Science, Healing Art, Math Competition, Math Support, Parallel Reading, Public Speaking, Writer’s Workshop, World Languages, etc. |



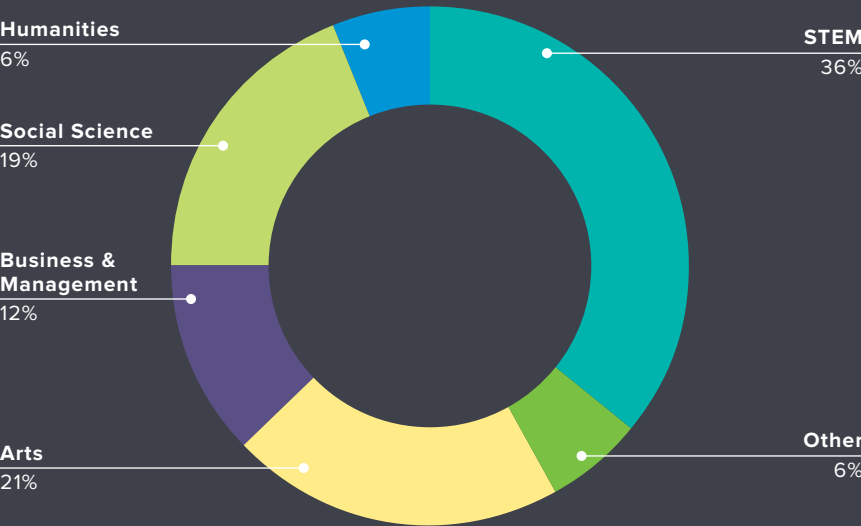
BRANKSOME
HALL ASIA

Branksome Hall Asia in Graphs

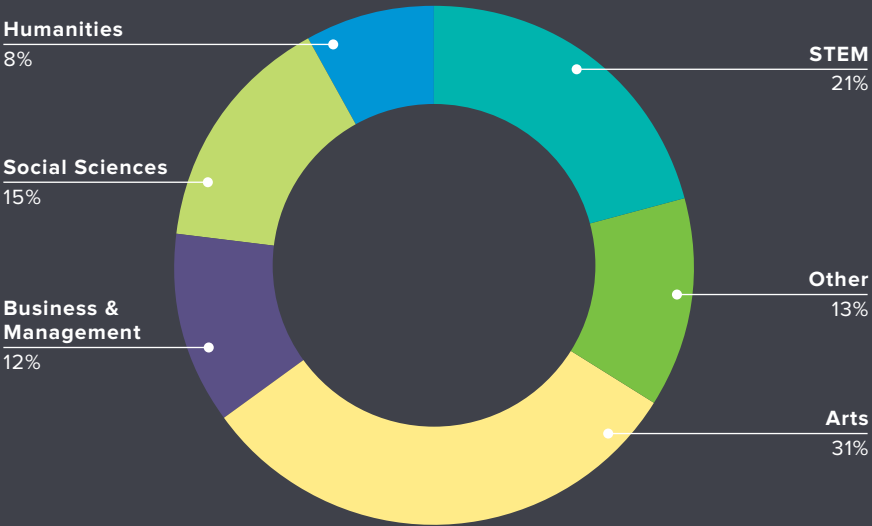
Faculty Nationalities



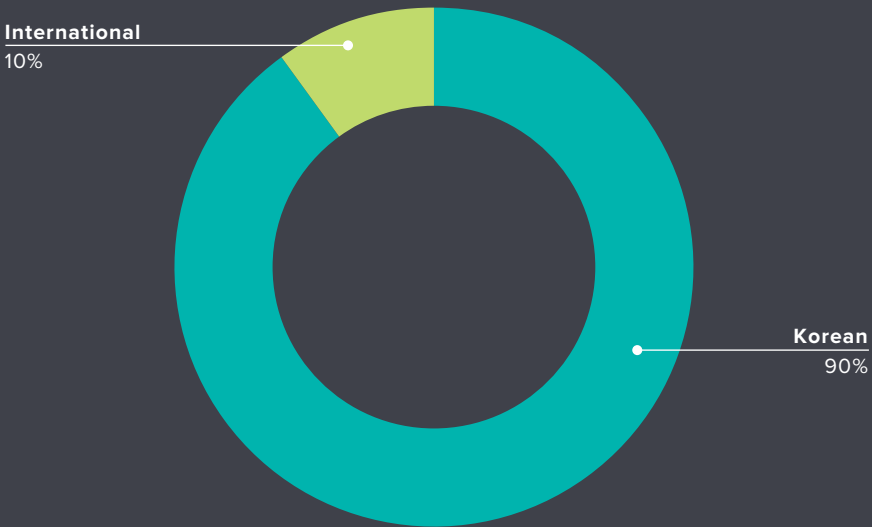
Intended Field of Study: Accumulated (2017-2023)



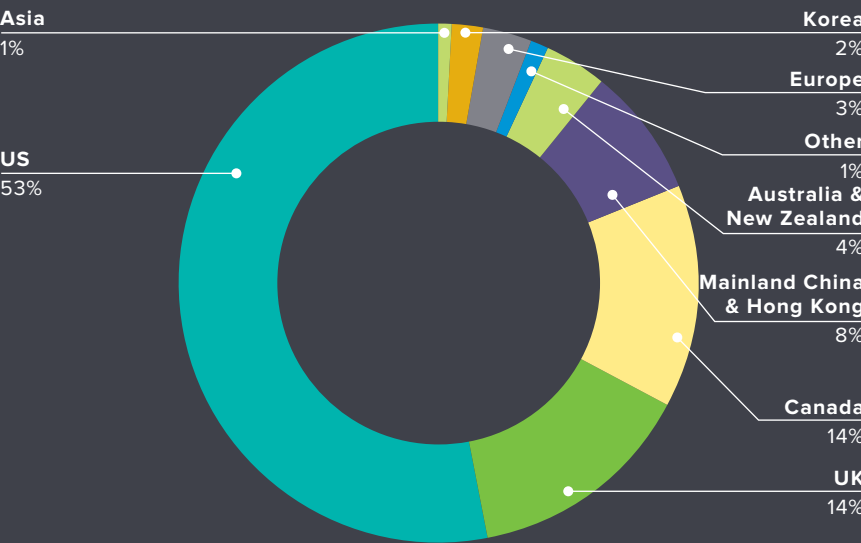
Intended Field of Study (Class of 2023)



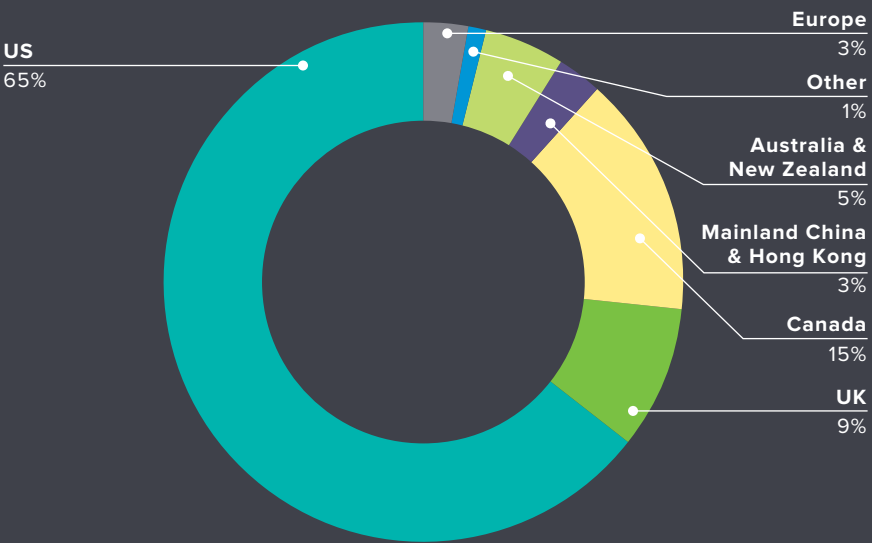
Student Nationalities




Choice of University by Country (2017-2023)



Choice of University by Country (Class of 2023)



Select List of University Acceptances for Branksome Hall Asia Graduates (2015-2023)



| USA |
|--------------------------------------------|
| Boston College |
| Boston University |
| Brown University |
| California Institute of Technology |
| Carnegie Mellon University |
| Columbia University |
| Cornell University |
| Duke University |
| Emory University |
| George Washington University |
| Georgetown University |
| Georgia Institute of Technology |
| Johns Hopkins University |
| New York University |
| Northwestern University |
| Parsons - The New School |
| Pratt Institute |
| Rhode Island School of Design (RISD) |
| Rice University |
| Swarthmore College |
| University of Chicago |
| Univ. of California-Berkeley, LA, others |
| University of Illinois - Urbana-Champaign |
| University of Michigan |
| University of North Carolina - Chapel Hill |
| University of Notre Dame |
| University of Pennsylvania |
| University of Southern California |
| Vanderbilt University |
| Yale University |
| Washington University in St. Louis |
| Williams College |




| UK |
|----------------------------------------------------|
| Central St. Martins, University of the Arts London |
| Courtauld Institute of Art |
| Durham University |
| Goldsmiths University of London |
| Imperial College London |
| King’s College London |
| London School of Economics (LSE) |
| Loughborough University |
| Manchester School of Architecture |
| University the Arts London |
| University College London |
| University of Bath |
| University of Bristol |
| University of Cambridge |
| University of Edinburgh |
| University of London |
| University of Manchester |
| University of Warwick |



| CANADA |
|-----------------------------------|
| Dalhousie University |
| McGill University |
| McMaster University |
| Ontario College of Art And Design |
| Queen’s University |
| University of British Columbia |
| University of Toronto |
| University of Waterloo |
| Western University |
| Wilfrid Laurier University |
| York University |



| EUROPE |
|---------------------------------------------------|
| American University of Paris (France) |
| Bard College Berlin (Germany) |
| Ecole hôtelière de Lausanne (EHL) (Switzerland) |
| Glion Institute of Higher Education (Switzerland) |
| Jacobs University (Germany) |
| Le Cordon Bleu Paris (France) |
| Royal College of Surgeons (Ireland) |
| Tilburg University (Netherlands) |
| University of Amsterdam (Netherlands) |
| University of Groningen (Netherlands) |



| KOREA |
|---------------------------|
| Seoul National University |
| Ewha Woman’s University |
| Yonsei University |
| Kyunghee University |
| SungKyunKwan University |

| ASIA |
|------------------------------------------------|
| Peking University |
| Waseda University |
| Keio University |
| National University of Singapore |
| Tokyo University |
| Hong Kong Polytechnic University |
| Hong Kong University of Science and Technology |
| University of Hong Kong |
| Nanyang Technological University |

| AUSTRALIA & NEW ZEALAND |
|-----------------------------------------|
| Australia National University |
| Monash University |
| Otago University |
| Royal Melbourne Institute of Technology |
| University of Adelaide |
| University of Auckland |
| University of Melbourne |
| University of Queensland |
| University of Sydney |
| University Technology of Sydney |

*The list is not exhaustive

University Results of Class of 2023

UNITED STATES OF AMERICA

ArtCenter College of Design
Auburn University
Berklee College of Music
Boston College*
Boston University (2)*
Brandeis University*
Brown University*
Bryn Mawr College*
Bucknell University
California College of the Arts
Carnegie Mellon University*
Case Western Reserve University
Chapman University
Concordia College
Columbia University*
Cornell University*
Cottey College
Denison University*
Drexel University*
Eastern Michigan University
Emory University - Oxford College
Florida International University
Fordham University
George Mason University
George Washington University
Georgetown University
Goucher College
Iowa State University
Indiana University - Bloomington (2)*
Johns Hopkins University
Kenyon College
LIM College
Loyola Marymount University
Marist College
Maryland Institute College of Art (MICA)

Michigan State University
New York Film Academy
New York School of Interior Design
New York University (7)*
Northeastern University (3)*
Northwestern University*
Ohio Northern University
Ohio State University
Ohio Wesleyan University
OTIS College of Art and Design
Parsons School of Design - The New School (4)*
Penn State University
Pepperdine University
Pratt Institute*
Purdue University
Queens College, City University of New York
Reed College
Rhode Island School of Design (RISD) (5)*
Rice University*
San Francisco Conservatory of Music
Savannah College of Art & Design (SCAD)
School of the Arts Institute of Chicago (SAIC)
School of Visual Arts (SVA)
Scripps College
Southern Utah University
Stony Brook University (SUNY)
SUNY - Binghamton
SUNY - Buffalo
Syracuse University
Tufts University*
University of California - Berkeley*
University of California - Davis
University of California - Irvine*

University of California - Los Angeles*
University of California - Merced
University of California - Riverside*
University of California - Merced
University of California - Riverside
University of California - San Diego (3)*
University of California - Santa Barbara
University of California - Santa Cruz
University of Colorado - Boulder
University of Delaware
University of Georgia
University of Illinois - Chicago
University of Illinois - Urbana-Champaign
University of Maryland
University of Massachusetts - Amherst
University of Massachusetts - Boston
University of Michigan - Ann Arbor*
University of Michigan - Dearborn
University of Michigan - Flint
University of Minnesota - Twin Cities
University of Notre Dame
University of North Texas College of Music
University of Pittsburgh*
University of Rochester
University of Southern California (3)*
University of Utah
University of Washington
University of Wisconsin - Madison*
Washington and Jefferson College
Washington University in St. Louis*
York College of Pennsylvania

UK

Arts University Bournemouth*
Glasgow School of Art
Goldsmiths, University of London*
King's College London
Kingston University
Leeds Conservatoire
London School of Economics and Political Science
Queen Mary University of London
Trinity Laban Conservatoire of Music and Dance
University College London (2)*
University of Brighton
University of Bristol
University of Edinburgh*
University of Exeter
University of Kent
University of Leeds
University of Manchester
University of the Arts London (2)*
University for the Creative Arts
University of Warwick

CANADA

Acadia University
Brock University
Dalhousie University
McGill University
McMaster University
Mount Allison University
OCAD University
Queen's University
Toronto Metropolitan University*
University of British Columbia*
University of British Columbia - Okanagan

University of Toronto (4)*
University of Toronto - Mississauga*
University of Toronto - Scarborough (2)*
University of Waterloo
Western University
Wilfrid Laurier University
York University
UBC-Sciences Po Dual Degree Programme*

EUROPE

American University of Paris
Ecole Hôtelière de Lausanne (EHL) - Passugg
IE University
University of Amsterdam*

KOREA

SUNY Korea Fashion Institute of Technology

ASIA & OTHER

ESSEC Business School, Asia-Pacific
Hong Kong University of Science and Technology
New York University - Abu Dhabi*
University of Hong Kong (HKU) (2)*

AUSTRALIA & NEW ZEALAND

James Cook University
Monash University
University of Melbourne*
University of New South Wales
University of Ottawa
University of Queensland
University of Sydney
University of Western Australia

* denotes matriculation and (#) of graduates matriculating

Admissions Process

| 1. RESEARCH | 2. VISIT | 3. APPLY | 4. ASSESS | 5. INTERVIEW | 6. ACCEPTED |
|--------------------------------------------------------------------------------------------------------------------------------------------------------------------------------------------------------------------------------------------------------------------------------------------------------------------------|---------------------------------------------------------------------------------------------------------------------------------------------------------------------------------------------------------------------------------------------------------------------------------------------------------------------------------------------------------------------------------------------|-------------------------------------------------------------------------------------------------------------------------------------------------------------------------------------------------------------------------------------------------------|------------------------------------------------------------------------------------------|----------------------------------------------------------------------------------------------------------------------------------------------------------|----------------------------------------------------------------------------------------------------------------------------------------------------------------------------------|
| <ul style="list-style-type: none">- Visit www.branksome.asia- Follow Branksome Hall Asia social media on Facebook, Instagram, YouTube- Explore IB and other programs- Find out what is a good fit for my child- Attend an information session online or offline | <p>If travelling is possible:</p> <ul style="list-style-type: none">- Make an appointment via phone / email / inquiry on website- Plan a trip to Jeju- Visit Branksome Hall Asia campus- Participate on a campus tour <p>If travelling is restricted:</p> <ul style="list-style-type: none">- Watch our virtual tour | <ul style="list-style-type: none">- Request relevant documents and recommendations at current school- Fill out an application form online- Submit documents at the point of application- Pay application fee | <ul style="list-style-type: none">- Take assessment depending on the grade | <ul style="list-style-type: none">- Interview for your child- Parent interview to discuss education philosophy and fit for school | <ul style="list-style-type: none">- Upon receiving offer letter, reply with intent to enroll- Pay Enrollment Deposit and set starting date as appropriate |

| GRADE | REQUIRED DOCUMENTS (AS OF 2023) |
|--------------------------|--------------------------------------------------------------------------------------------------------------------------------------------------------------------------------------|
| All (JK Prep - Grade 11) | <ul style="list-style-type: none">- Online application- Photo- Copy of passport- Parent Statement Form |
| Grades 1 | <ul style="list-style-type: none">- School records- Homeroom teacher recommendation- Parent Statement Form |
| Grades 2-5 | <ul style="list-style-type: none">- School records- Homeroom teacher recommendation- Student Profile- Parent Statement Form |
| Grades 6-11 | <ul style="list-style-type: none">- Student records- Recommendations from English and Math teachers- Student Profile- Parent Statement Form |

| GRADE | ASSESSMENT (AS OF 2023) |
|--------------|-------------------------------------------------------------------------------------------------------------------------------------------------------------------------------------------------------------------------------------------------------------------------|
| JK Prep - SK | <ul style="list-style-type: none">- Small group activity observation |
| Grades 1-2 | <ul style="list-style-type: none">- Branksome Hall Asia assessment (English reading and writing; Math; Home language writing if Korean or Chinese) |
| Grades 3-5 | <ul style="list-style-type: none">- MAP Test (English & Math)- Branksome Hall Asia assessment (English reading, writing and speaking; Home language writing and speaking if Korean or Chinese)- Student interview |
| Grades 6-11 | <ul style="list-style-type: none">- MAP Test (English & Math)- Branksome Hall Asia assessment (English writing and speaking; Home language writing and speaking if Korean or Chinese)- Student interview- Parent interview |

