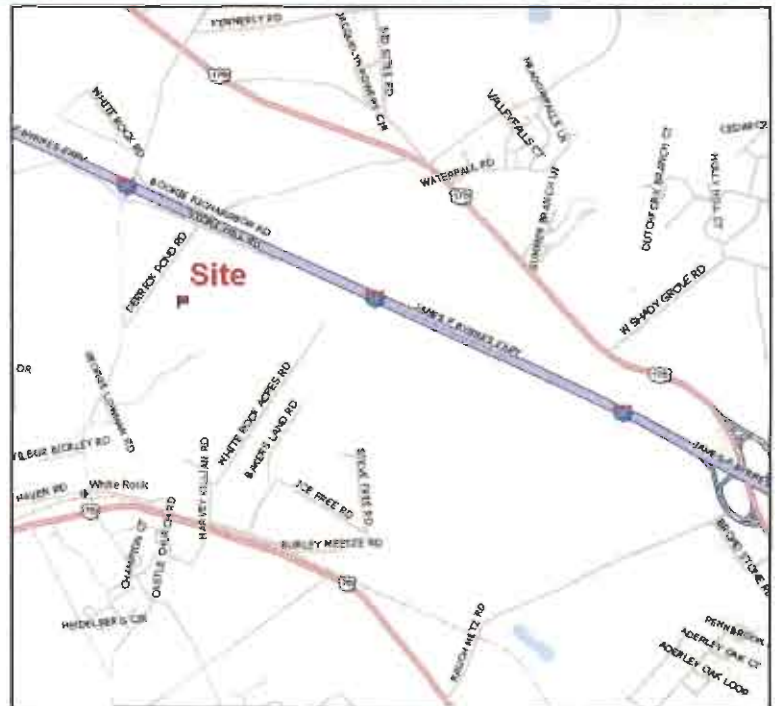


# FOR SALE

## Derrick Pond Road, Chapin, SC



- 47.42 Acre tract
- Price: \$830,000
- Rapidly growing area
- Located just minutes from new Food Lion anchored retail center
- Three miles from I-26's Peak Exit
- Less than one mile from New School District 5 Site



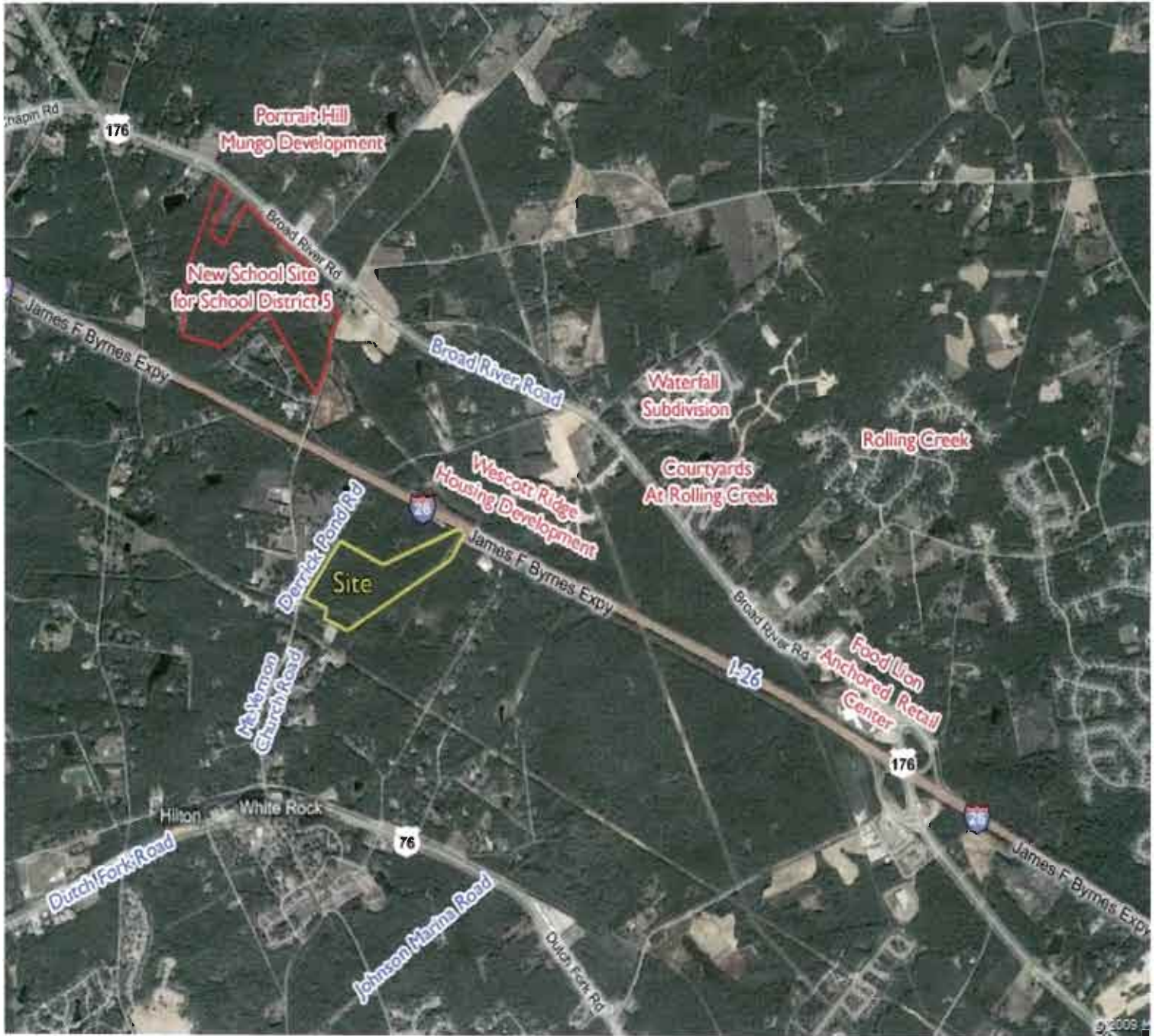
For more information please contact:

**George Meetze**  
803.255.8630  
GMeetze@wilsonkibler.com

1111 Laurel Street, Columbia, SC 29201 803.779.8600 fax 803.252.4323 www.wilsonkibler.com  
Independently Owned and Operated All listings are found on our website through Loopnet®

The information contained herein was obtained from sources believed reliable, however, Grubb & Ellis/Wilson Kibler Inc. makes no guarantees, warranties or representations as to the completeness or accuracy thereof. The presentation of this property is submitted subject to errors, omissions, changes of price or conditions prior to sale or lease, or withdrawal without notice.

**LOCAL PRESENCE GLOBAL REACH**



**LOCAL PRESENCE GLOBAL REACH**

# Richland County Map



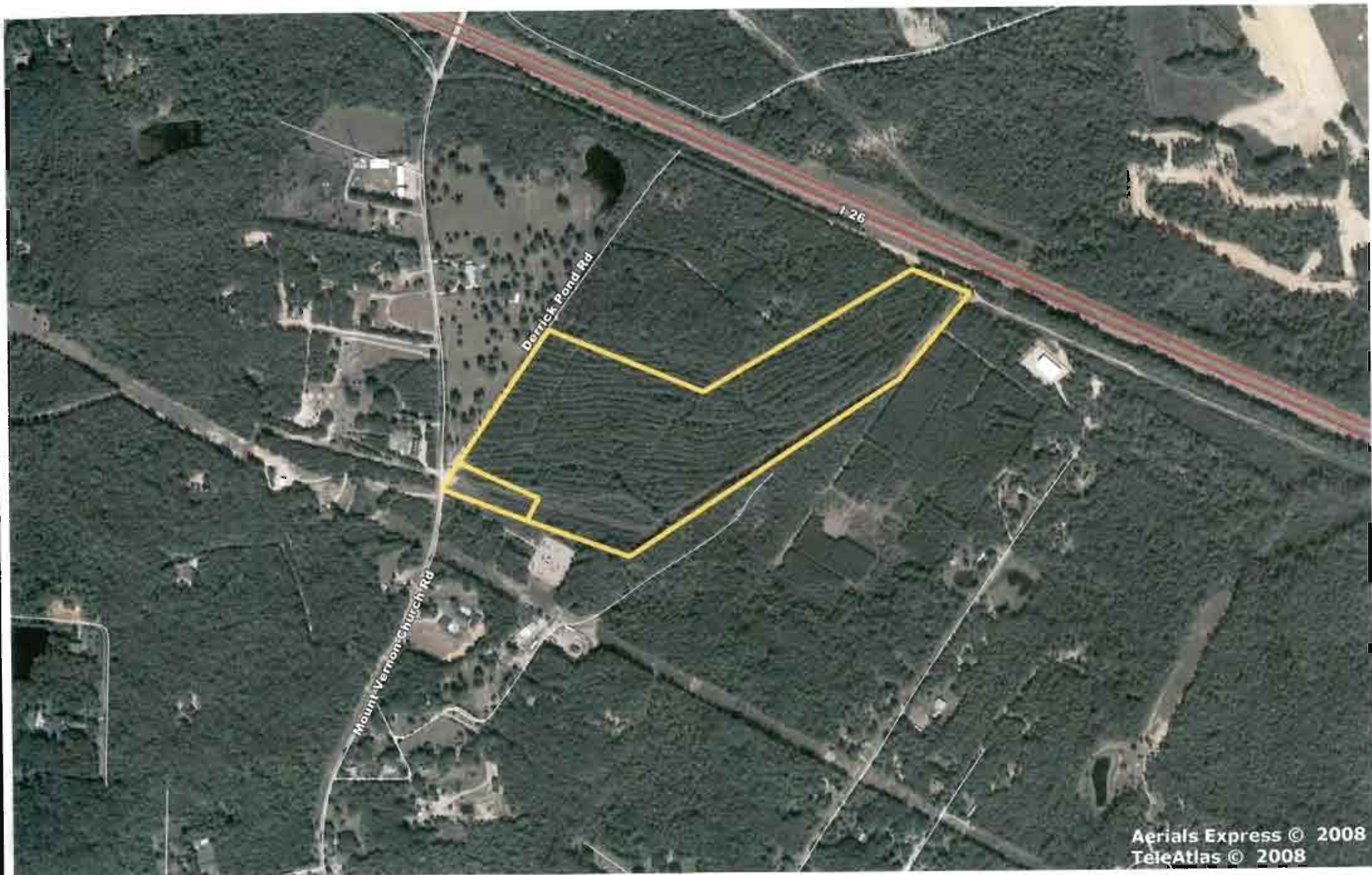
COPYRIGHT 2009, RICHLAND COUNTY GIS



DISCLAIMER : THIS IS A PRODUCT OF THE RICHLAND COUNTY GIS DEPARTMENT. THE DATA DEPICTED HERE HAVE BEEN DEVELOPED WITH EXTENSIVE COOPERATION FROM OTHER COUNTY DEPARTMENTS, AS WELL AS OTHER FEDERAL, STATE AND LOCAL GOVERNMENTS AGENCIES RICHLAND COUNTY EXPRESSLY DISCLAIMS RESPONSIBILITY FOR DAMAGES OR LIABILITY THAT MAY ARISE FROM THE USE OF THIS MAP.







Aerials Express © 2008  
TeleAtlas © 2008

Derrick Pond