



# History of Revere Local Schools



*As of 7/4/17*

## Acknowledgments

This has been a daunting task—but a love of several of my favorite things: Revere and History. I am extremely pleased with the results thus far and I am glad that such a written history now exists. I hope everyone enjoys it.—Phil Heyn (Revere Teacher and Alumnus '96)

- Thanks you for those sources and people that contributed to this compilation, including but not limited to:

- |  |  |
|--|--|
| o Revere Administration  | o Revere HS Library and Staff  |
| o <i>Bath Hi-Spy</i>   | o <i>Richfield Echo</i>  |
| o <i>Reverie</i> (RHS Yearbook)  | o <i>Lantern</i> (RHS School Newspaper)                                  |
| o <a href="#"><i>History of Bath</i></a> (Revere HS Social Studies-1968)             | o William Perrin's <a href="#"><i>History of Summit County</i></a> —1881 |
| o <a href="#">Bath Historical Society and Museum</a>                                 | o <a href="#">Richfield Historical Society</a>                           |
| o Bath School Yearbooks  | o Revere Middle School (Eastview) Yearbooks                              |
| o Hillcrest Yearbooks  | o <a href="#">Akron Beacon Journal</a>                                   |
| o <a href="#">Scriptype</a> ( <i>Bath Country Journal</i> / <i>Richfield Times</i> ) | o <a href="#">West Side Leader</a>                                       |
| o Don Welch (Former Teacher)   | o Jim Nelson (Former Teacher/Principal)                                  |
| o John Backderf (Revere HOF Inductee)  |  |

Errors/Mistakes: This is a project that I am volunteering my time to do—so please be patient and understanding. Please contact me for additions and/or corrections. ([pheyne@revereschools.org](mailto:pheyne@revereschools.org)).

- This history is a WORK IN PROGRESS. There are many things that have been lost over the years that we would love to recover. I need help filling in the gaps and missing information.
  - o We would love information, scans/copies/or originals of primary sources are vital (newspapers, scrapbooks, yearbooks, etc.).

# History of Revere Local Schools Tables of Contents

<b>History of Bath and Richfield</b>	<b>4</b>
<b>History of Schools in Bath</b>	<b>5-6</b>
<b>History of Schools in Richfield</b>	<b>7-8</b>
<b>History of Revere Local Schools</b>	<b>9-10</b>
<b>History of Richfield School</b>	<b>11-14</b>
<b>History of Bath School</b>	<b>15-21</b>
<b>History of Hillcrest School</b>	<b>22-26</b>
<b>History of Revere Middle School (Eastview)</b>	<b>27-31</b>
<b>History of Revere High School</b>	<b>32-55</b>
<b>History of Revere Administration</b>	<b>56-57</b>
<b>History of Revere Transportation</b>	<b>58-61</b>
<b>History of Revere Athletics</b>	<b>62-75</b>

# History of Bath and Richfield

## Region

The Connecticut Western Reserve was land claimed by Connecticut in the Northwest Territory in what is now northeastern Ohio. Early settlers called the territory "New Connecticut," but that name was later discarded in favor of "Western Reserve." In 1796, Connecticut sold that land to investors, eight investors from Suffield, Connecticut. These investors formed the Connecticut Land Company which then surveyed the land as well as encourage settlement.

## Bath Township

The region, which is now known as Bath, wasn't officially owned by the government until the Treaty of Fort Industry in 1805. The first permanent settlers, Jonathan Hale and Jason Hammond came in 1810, and eight years after that, 1818, the township was officially organized. When the township first formed, the big question was what to call it. Jonathan Hale is alleged to have said, "Call it Jerusalem, Jericho, or Bath, or anything but Hammondsburgh (the name the township had become known as)." After a vote by the residents, the township was officially named Bath.

The township government was patterned after the local form of government with which the settlers had been familiar in Connecticut and the other New England states. Three trustees, a clerk, and a justice of the peace served as the elected officials. The early township records have been lost, but only one of these first officials has been positively identified, this is Dr. Henry Hutson, who served as the first Justice of the Peace. The first constable, who was appointed by the trustees, was Eleazer Rice. Partial records have shown that Jonathan Hale and Jason Hammond were early trustees, but the exact dates of their terms of office are not known.

The first regular fire station in Bath was organized in 1922. The Stony Hill Fire Department, which was operated from 1935-1965, also served Bath. The equipment of this department was bought and furnished by the volunteers. Before these fire stations were established, bucket brigades and other haphazard techniques were the only methods for fire fighting. This is the reason why few of the old mills and stores are still standing. As Bath progressed through the years, the importance of fire and police protection increased.

- [Bath Township Elected Officials History](#)
- [Bath Township Roads and Transportation History](#)
- [Bath Township Timelines Through 1970](#)

## Richfield Village/Township

In 1809 Lancelot Mays came to this area with his wife and built a log cabin on the property at 3600 & 3636 Broadview Road. The land belonged to Herman Oviatt who had purchased it from the Connecticut Land Company. In April of 1816, by the authority of the Commissioners of Portage County (to which Richfield belonged at the time) Richfield became its own township. The way it received its name has two versions: 1) it was given name Richfield due to the fertile soil that the area contained; 2) it was given the name Richfield due to the large amount of "Oxbalm" or "rich feed" available to feed cattle.

## History of Schools in Bath

The first school in Bath was located in the Northeast corner of Bath, in 1810 a 16' square log house near the Hale Homestead. Bath was first divided into two districts, north and south, but bitter arguments ensued as families wanted schools closer to their homes. As a result, the districts continued to divide and subdivide until there were 12 one-room schoolhouses that operated until 1923.

<u>District # and School</u>	<u>Location</u>	<u>History</u>	<u>Pictures</u>
Bath Township's One-Room Schoolhouses		<a href="#">LINK</a>	<a href="#">LINK</a>
#1 Hammond's Corners School	Cleveland-Massillon/Ira Roads	<a href="#">LINK</a>	<a href="#">LINK</a>
#2 Bath Center School	Cleveland-Massillon/Bath Roads	<a href="#">LINK</a>	<a href="#">LINK</a>
#3 UNSURE		<a href="#">LINK</a>	<a href="#">LINK</a>
#4 Ghent School	Cleveland-Massillon/Yellow Creek Roads	<a href="#">LINK</a>	<a href="#">LINK</a>
#5 Hurd's Corner	Bath/Hametown Roads	<a href="#">LINK</a>	<a href="#">LINK</a>
#6 UNSURE		<a href="#">LINK</a>	<a href="#">LINK</a>
#7 East Bath "Little Germany" School	Bath-Shade/Revere Roads	<a href="#">LINK</a>	<a href="#">LINK</a>
#8 Ira School	Ira Road/Oak Hill Roads	<a href="#">LINK</a>	<a href="#">LINK</a>
#9 UNSURE	N/A—contained Copley and Bath Twp students	<a href="#">LINK</a>	<a href="#">LINK</a>
#10 McAllister School	Sourek/Revere Roads	<a href="#">LINK</a>	<a href="#">LINK</a>
#11 Farley's Corners School	Bath/Medina Line Roads	<a href="#">LINK</a>	<a href="#">LINK</a>
#12 Stony Hills School	Route 18/Hametown Roads	<a href="#">LINK</a>	<a href="#">LINK</a>
<b>NOTE:</b> Links available courtesy of the Bath Historical Society and Museum— <a href="http://www.bathhistoricalsociety.org">www.bathhistoricalsociety.org</a>			

Prior to 1893, Bath had no high school and students that wanted to attend high school (very few) went to Copley, Richfield, Granger, or Akron by train. In 1893, Bath Board of Education decided to establish a high school. The new school was constructed in 1894 using the upper floor of the Bath Center School (the current parking lot of the old Bath Town Hall) and it later got the nickname "Temple on the Hill." The first principal was Mr. Clyde Berry and it cost \$40 a year to attend high school (elementary was free). Five students graduated with the first class in 1895.

In 1907, L. G. Bean was hired and the infamous "Bean Scandal" occurred. Mr. Bean was "so incompetent" he was fired after his first year and in a fit of rage, he destroyed the school records for that year. As a result, several students had to make up the lost year to properly graduate.

In 1908 Mr. C.G. Wise was hired. He brought in extra teachers and equipment and established "one of the first football teams in the area." In 1909, Bath school became accredited.

In 1920, [Mr. Roy M. Pugh](#) came to Bath. He was named principal while also teaching. Serving in that capacity, he did many tremendous things for his students and faculty including adding Music and Art to the curriculum in the early 1930s.

Despite two failed votes to centralize the school district, in 1922 the state condemned the high school which forced the issue and led to the building of a new school. In 1923, all of the one-room schools closed and the centrally located Bath Centralized School opened its doors. It was a K-12 building located on the corner of Cleveland-Massillon and Bath Roads and cost \$112,000 to build and equip the new school. The students were known as the Bath Buccaneers.

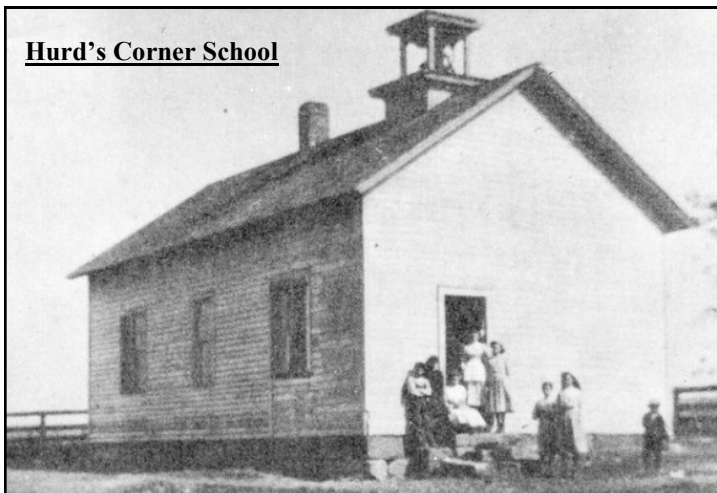
# History of Schools in Bath

On [December 1, 1930](#) gas in the coal bin stored in the furnace room exploded. One student died and four others were injured. The damage to the structure was estimated at \$14,000. One of the trees at the left of the building was planted in memory of William “Bill” Haser who died in the explosion. School was closed for 2 weeks following the explosion.

In 1935, the first National Forensic League was brought to Bath thanks to Mr. Pugh. The school newspaper/yearbook was called the [Bath Hi-Spy](#).

The last graduating class from Bath High School was in the spring of 1951.

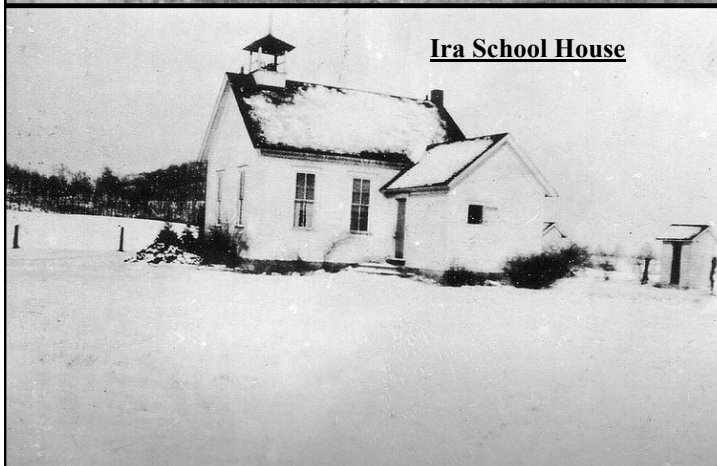
**Hurd's Corner School**



**Farley's Corners School**



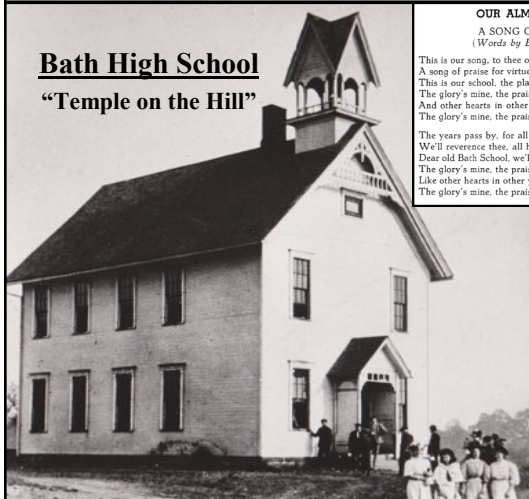
**Ira School House**



**Stony Hill School House**



**Bath High School**  
“Temple on the Hill”



OUR ALMA MATER  
A SONG OF PRAISE  
(Words by Eulalia Plank)

This is our song, to thee our alma mater.  
A song of praise for virtues such as thine:  
This is our school, the place where all our hopes lie.  
The glory's mine, the praise is thine.  
And other hearts in other years were saying  
The glory's mine, the praise is thine.  
  
The years pass by, for all they have no staying.  
We'll reverence thee, all honor shall be given;  
Dear old Bath School, we'll live our lives to bless thee.  
The glory's mine, the praise is thine.  
Like other hearts in other years we're saying  
The glory's mine, the praise is thine.

**Bath Township Schools**



**NOTE:** Pictures and picture links available courtesy of the Bath Historical Society and Museum—[www.bathhistoricalsociety.org](http://www.bathhistoricalsociety.org)

## History of Schools in Richfield

In 1816 Richfield Township built a building that served as town hall, church, court, social hall, and school house. Leamon Farnham, son of early settler John Farnham, was the first teacher at East Richfield. In the coming years, Richfield had a number of one-room schools scattered throughout the township.

<u>District # and School</u>	<u>Location</u>	<u>History</u>	<u>Pictures</u>
#1 UNSURE		LINK	LINK
#2 Buck School	Hawkins Road	LINK	LINK
#3 Bangs Corner School	Boston/Broadview Roads	LINK	LINK
#4 Black Road School	Black Road	LINK	LINK
#5 UNSURE		LINK	LINK
#6 East Hill School	Streetsboro Road	LINK	LINK
#7 UNSURE		LINK	LINK
#8 UNSURE		LINK	LINK
#9 Centennial Corners School	Everett/Revere Roads	LINK	LINK
#10 UNSURE		LINK	LINK
#11 UNSURE		LINK	LINK
#12 UNSURE		LINK	LINK
<b>NOTE:</b> Links available courtesy of the Richfield Historical Society— <a href="http://www.richfieldohiohistoricalsociety.org">www.richfieldohiohistoricalsociety.org</a>			

In 1860, West Richfield brick school was built. It was destroyed by fire on February 2, 1905 when a bird's nest in the belfry caught fire. The school was rebuilt in 1906. It was abandoned when the schools centralized in 1916 and is now part of the Masonic Temple in Richfield.

In 1872, the academy (established in 1835) was abandoned and Richfield Center High School was built on the site. It was later destroyed by fire and rebuilt in 1887. In 1916 it was torn down to make way for the new brick centralized school. The building materials were used to build 2 houses (4060 Humphrey Road) and a building no longer standing).

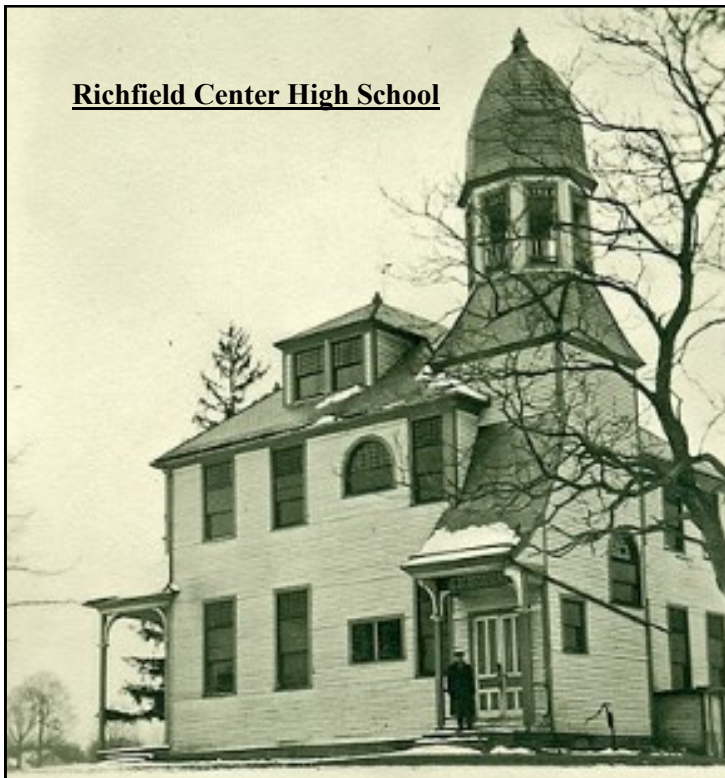
In 1905, East and West Richfield High Schools united.

In 1914, Richfield combined all their local schools into one, Richfield Centralized School (K-12), located on Rt. 303 (was finished in 1916). The new school doubled the size of the old—the building was dedicated in August of 1917. The students were known as the Richfield Rockets. The produced a [yearbook](#) and the school newspaper was called the *Richfield Echo*. In 1921 the PTA was organized. In 1925 a hot lunch program was started with volunteers working and in 1929 the first cook was hired. In 1930, [Harold C. Schweisberger](#) was named the principal after teaching mathematics and history the previous two years. He would continue to be the principal until Richfield's consolidation with Bath.

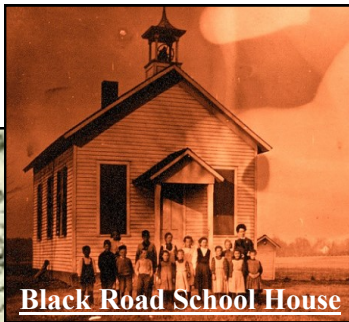
# History of Schools in Richfield

In 1934, an addition was built to accommodate 1st grade classrooms and a woodshop classroom. In 1937 a bond was passed to add an addition onto the northern part of the existing school. The bond paid for 60% of construction while the New Deal program WPA, paid for the other 40%. The addition included a bus garage, auditorium/gymnasium, and addition classrooms. It was completed in 1939-1949. The class of 1940 was first to graduate in the new gymnasium, previous graduation ceremonies were held in Richfield Town Hall.

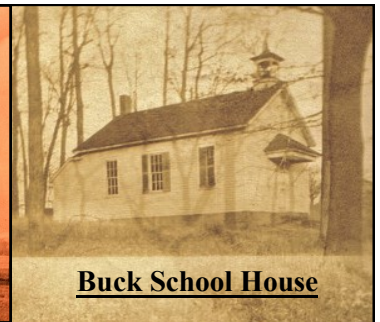
In 1949, a Kindergarten was started in town hall. The last graduating class from Richfield High School was in the spring of 1951.



Richfield Center High School



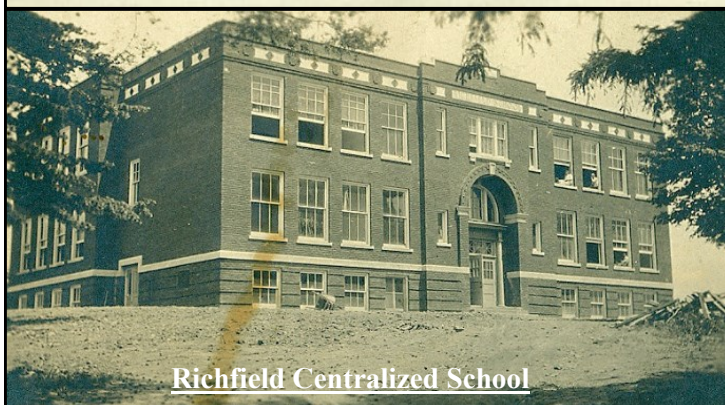
Black Road School House



Buck School House



West Richfield High School (Pre-1905 Fire)



Richfield Centralized School



West Richfield High School (Rebuilt Post-1905 Fire)

**NOTE:** Pictures and picture links available courtesy of the Richfield Historical Society—[www.richfieldohiohistoricalsociety.org](http://www.richfieldohiohistoricalsociety.org)

## History of Revere Local School District

Early in 1949, discussions began between Bath and Richfield school districts regarding the consolidation of their two school districts—the [Bath-Richfield Merger](#). On October 11, 1949 there was an official vote to consolidate the two communities (Richfield 272 to 187 and Bath 258 to 79). On November 14, 1949, Summit County Board of Education officially recognized the new system and named it the “Bath-Richfield Local School District.” (NOTE: In 1966, the Bath-Richfield School District school board voted to rename the district after the name of the high school and on July 1, 1967 it became “Revere Local School District.”)

On February 28, 1950, voters approved a bond to build a new high school (Bath 387-109 and Richfield 184-259)—it “was defeated in Richfield, but in Bath residents had cast votes that carried the point for both communities.” Following bond approval, the Bath-Richfield School Board supervised the purchase of 28 acres for the site of the new school at the intersection of Revere and Everett Roads.

On October 5, 1950, the school board selected “Revere High School” as the name for the new school. The name was first suggested by long time teacher and coach [Gordon E. Knapp](#) based on the road the new school was being built on. On November 13, 1950, the students voted Red, White, and Blue as the district’s colors and “Minutemen” was selected as the mascot based on the inspiration of the new high school name.

The first year of consolidated high schools was in 1951. The school began construction in August of 1951 (ground breaking was [June 17, 1951](#)). While the school was being built, high school students spent half a day at Bath School and half a day at Richfield School (9<sup>th</sup> and 10<sup>th</sup> graders at Richfield in the morning and Bath in the afternoon). On [May 29, 1952](#) the first graduating class of Revere held their commencement in the Richfield School auditorium. On January 20, 1953, all high school students moved into the new school. The official dedication of the school occurred on [March 21, 1954](#).

In that first year with students attending both schools, Carl Coffeen served as superintendent (he was County Superintendent) and [Roy M. Pugh](#) (former Bath School Principal) served as Revere’s principal. The following year, 1952-53, Pugh served as the Superintendent with [Harold C. Schweisberger](#) (former principal at Richfield School) serving as Revere’s principal. In 1953-54 Schweisberger took over as Superintendent (1953-1964) [George H. Bayliss](#) became Revere’s principal (1954-1971).

After the completion of the high school, 9-12 graders attended Revere High School while Bath and Richfield schools had K-8 grades—the community students lived in is the school they attended.

## History of Revere Local School District

In 1957 Hillcrest School was added to be a 6-8 building and Bath and Richfield schools became K-5 buildings.

In 1960 Eastview Junior High School (Revere Middle School) was added to be a 6-8 building. Bath, Richfield, and Hillcrest schools all became K-5 buildings.

In 1961 Eastview Junior High added freshmen and Revere High School became a 10-12 building while Bath, Richfield, and Hillcrest schools became K-6 buildings.

In 1975, freshmen returned to the high school and Eastview Junior High became a 7-8 building while Bath, Richfield, and Hillcrest schools remained K-6 buildings.

In 1980, Hillcrest School became a primary building (K-2), and Richfield and Bath schools became elementary buildings (3-6) each serving the residents of their communities. In 1990, the district consolidated the kids from both communities and split the grades—Richfield School (3-4) and Bath School (5-6).

In the early 1990s, the district was overcrowded with numerous classroom trailers at each building. It is at this time that initial conversations begin to occur about a [Revere-Woodridge merger](#)—consolidating with Woodridge High School which was also in need of increased facilities. The community quickly spoke out against the plan and a bond passed in November of 1992 which did not include new schools but rather additions/improvements to the existing schools.

In 1994 after completion of the additions due to the bond issue, third graders were sent to Hillcrest School making it a K-3 building. Sixth graders were sent to Revere Middle School (Eastview) making it a 6-8 building. Richfield was closed (except Summit Country Preschool was housed in the newer annex until 2009) and the property sold in 2012.

On November 8, 2016 voters approved [Issue 45](#) which provided funding to build a new high school, elementary school, and renovating-improving Hillcrest and the middle school.

- [Tale of Two School Districts](#): By Mike McCoy for the Class of 1952's 50th Reunion

# History of Richfield Elementary

In 1949, discussions began between Bath and Richfield school districts regarding the consolidation of their two districts started. There was an agreement reached and land was purchased to build a new consolidated high school. While construction was taking place on the new high school, students split their days between Richfield and Bath schools (9<sup>th</sup> and 10<sup>th</sup> graders at Richfield in the morning and Bath in the afternoon).

After completion of the high school, Richfield School became a K-8 building serving the residents of Richfield and improvements were made to Richfield to accommodate. [Mr. Harold Schweisberger](#) continued to serve as principal for the first year before becoming the principle for Revere High School the following year with Esther Burkett taking over Richfield as the principal.

With the addition of Hillcrest School in 1957 (6-8) to the district, Richfield School became a K-5 building. In 1960 when Eastview Junior High School (Revere Middle School) was added, Richfield School remained a K-5 building (residents of the two communities were split between Richfield, Bath, and Hillcrest schools). In 1961 when Eastview Junior High added freshmen, Richfield, Bath, and Hillcrest schools added 6th grade.

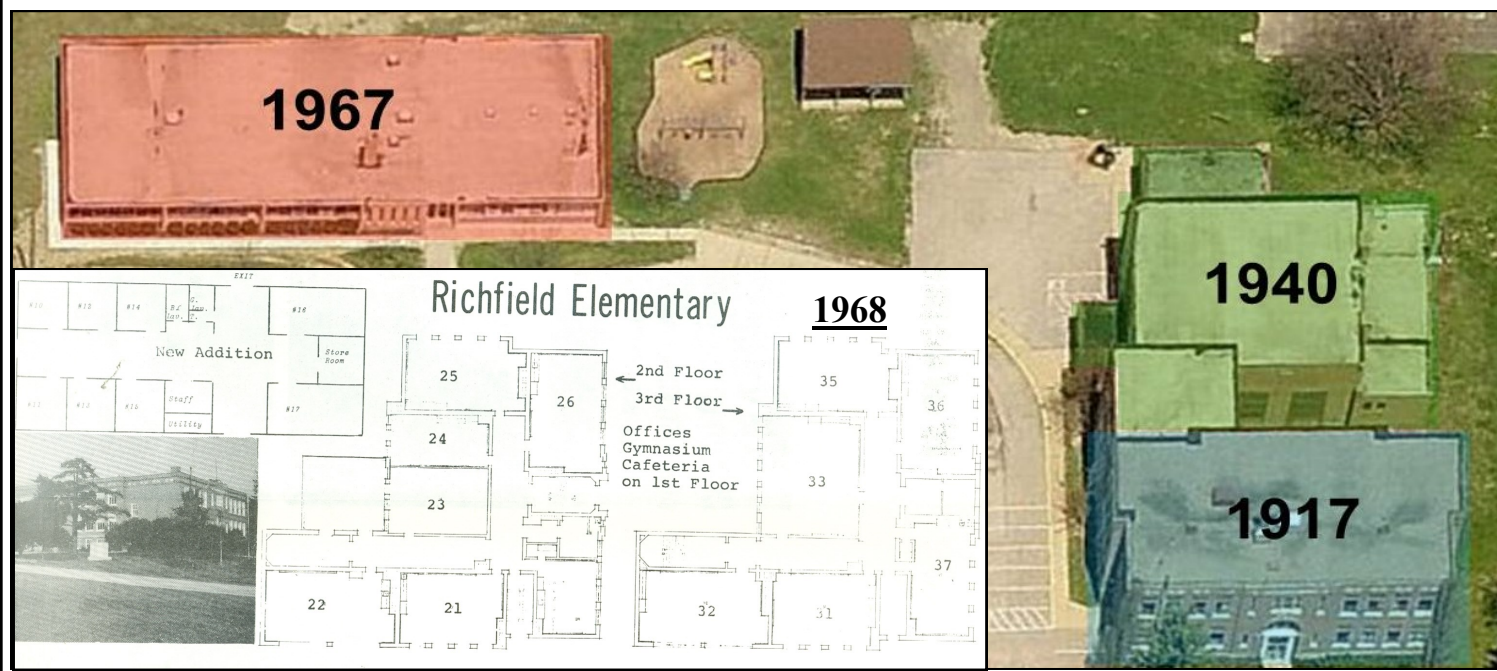
In 1980, Hillcrest School became a primary building (K-2) and Richfield and Bath schools became elementary buildings (3-6) for the residents of their communities. In 1990, the district consolidated the kids from both communities and split the grades—Richfield School (3-4) and Bath School (5-6).

In 1994, Richfield School closed. The decision was made based on the condition of the original Richfield building as well as the lesser demand of room with additions being added to other buildings—6th graders went to Revere Middle School, 3rd graders went to Hillcrest School, and 4th & 5th graders went to Bath School. The newer annex (1967) housed Summit Country Preschool for a number of years until 2009. The building was then used by the district for storage until the building and the 10.2 acres it sits on was sold in June 2012.

## [Richfield Timeline](#)

### Richfield School Video History

- Then & Now Part 1: [www.youtube.com/watch?v=qB0L\\_taAgPQ](http://www.youtube.com/watch?v=qB0L_taAgPQ)
- Then & Now Part 2: [www.youtube.com/watch?v=plP4NfLRmhQ](http://www.youtube.com/watch?v=plP4NfLRmhQ)



## History of Richfield Elementary—Building

In 1916, the old school house between the centers was torn down to make way for the brick building, doubling its size—the building was dedicated in August of 1917.

In 1934, an addition was built to accommodate 1st grade classrooms and a woodshop classroom.

In 1937 a bond was passed to add an addition onto the northern part of the existing school. The bond paid for 60% of construction while the New Deal program WPA, paid for the other 40%. The addition included a bus garage, auditorium/gymnasium, and addition classrooms. It was completed in 1939-1949. The class of 1940 was first to graduate in the new gymnasium, previous graduation ceremonies were held in Richfield Town Hall.

After completion of the high school in 1954, Richfield School became a K-8 building serving the residents of Richfield and improvements were made to Richfield to accommodate: “the seventh grade room has a new floor, the former shop room floor has been refinished and converted into kindergarten rooms. The home economics room got a new floor, while on the third floor the partition between the library and former typing room has been removed.”

In 1964 the Harold Schweisberger Library was constructed and dedicated. [Mr. Schweisberger](#) was a longtime principal at Richfield, served as principal at the new Revere High School for a year, and then became Revere’s Superintendent for a number of years.

On November 8, 1966 a bond passed on it’s second try (2,250-1,526) which allowed for Richfield to build an annex west of the school. It was finished in 1968 and featured new classrooms. Those students had their classrooms and then walked to the main building for lunch, music, art, and physical education.

In 1994, the school district closed Richfield Schools. The newer addition was used for Summit County Preschool until officially closing in 2009. The building was then used by the district for storage until the building and the 10.2 acres it sits on was sold in June 2012.

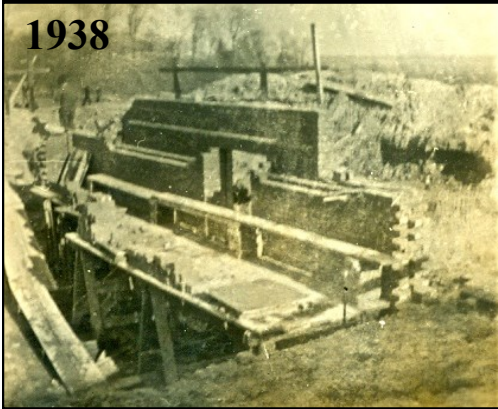
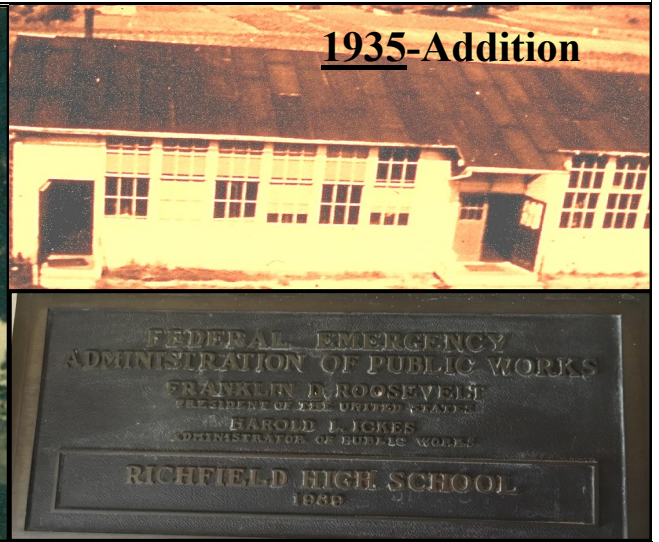
## History of Richfield Elementary—Richfield School Bell

The bell was cast in 1888 by the Buckeye Bell Foundry, Van Payne & Taft, Cincinnati. The bell was originally used in the first school (built in 1887) and then later used to call students at the “new” Richfield School built in 1914 and then again at the new Richfield Centralized school built in 1917.

In 1967 when Richfield had an annex built, a display was built in the front of the school which displayed the bell. In 1994, when the building was closed—the bell was moved and is now housed at Hillcrest Elementary School.

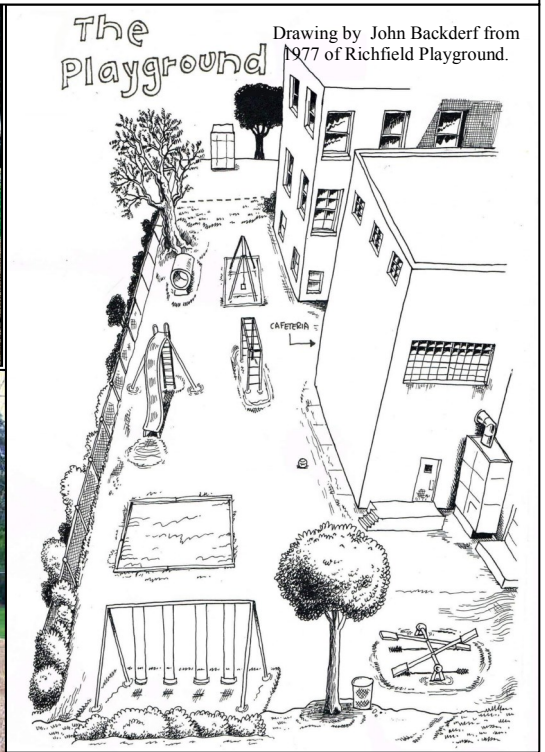


# History of Richfield Elementary—Building



# History of Richfield Elementary—Building

These pictures are approximately circa 2000 and were posted by John Backderf on the Revere Alumni Association.



## **History of Bath School**

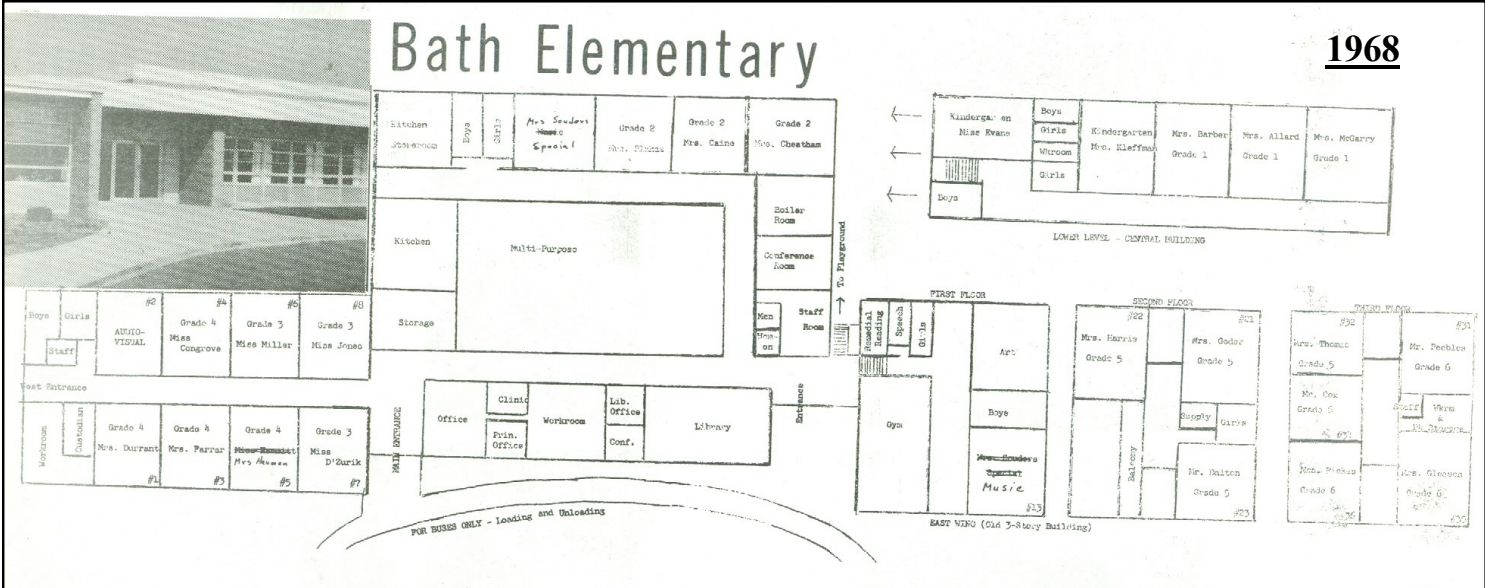
In 1949, discussions began between Bath and Richfield school districts regarding the consolidation of their two school districts started. There was an agreement reached and land was purchased to build a new consolidated high school. While construction was taking place on the new high school, students split their days between Bath and Richfield schools (11<sup>th</sup> and 12<sup>th</sup> graders at Bath in the morning and Richfield in the afternoon).

After completion of the high school, Bath School became a K-8 building serving the residents of Bath. With the addition of Hillcrest School in 1957 (6-8) to the district, Bath became a K-5 building. In 1960 when Eastview Junior High School (Revere Middle School) was added, Bath school remained a K-5 building (residents of the two communities were split between Bath, Richfield, and Hillcrest schools). In 1961 when Eastview Junior High added freshmen—Bath, Richfield, and Hillcrest schools added 6th grade.

In 1980, Hillcrest School became a primary building (K-2), and Bath and Richfield schools became elementary buildings (3-6) for the residents of their communities. In 1990, the district consolidated the kids from both communities and split the grades—Bath School (5-6) and Richfield School(3-4).

In 1994, 6th graders went to Revere Middle School, 3rd graders went to Hillcrest School, and 4th & 5th graders went to Bath School.

## An aerial photograph of the University of Illinois at Chicago campus. Three buildings are highlighted with semi-transparent colored overlays and labeled with their construction years. On the left is a red-outlined building labeled '1962'. In the center is a large green-outlined building labeled '1967'. On the right is a blue-outlined building labeled '1923'. A parking lot with several cars is visible to the left of the red building. The surrounding area includes green lawns and other campus structures.



## **History of Bath School—Building**

In 1923, all of the one-room schools closed and the centrally located Bath School opened its doors. Bath School was a K-12 building located on the corner of Cleveland-Massillon and Bath Roads and cost \$112,000 to build and equip the new school.

In 1929, an additional 5 acres of property was purchased along the purchasing of a two-room portable building from Copley. The portable building was added to the south of the school to accommodate for more students.

In 1952, a bond was passed to expand Bath School and in 1953 the new annex was completed. It, “The Tin Annex” as it was known, was built directly west of the Bath building and was built for the lower grades: “Bath kindergarten and the first and second grade will occupy the new four classroom, steel building.”

In 1962, an 8-classroom addition was completed to the west of the “Tin Annex.” It also included restrooms.

On November 8, 1966 a bond passed on its second try (2,250-1,526) which allowed for Bath School to build an addition. The old “Tin Annex” was torn down and in its place was a two-story addition which featured administrative offices, library, kitchen, cafeteria, and 11-classrooms.

As part of the 19?? Addition/change, the original entrance was turned into a boys’ bathroom. The old boys’ bathroom/locker room was converted into a classroom (currently the band room). The girls’ locker room remains a girls’ restroom.

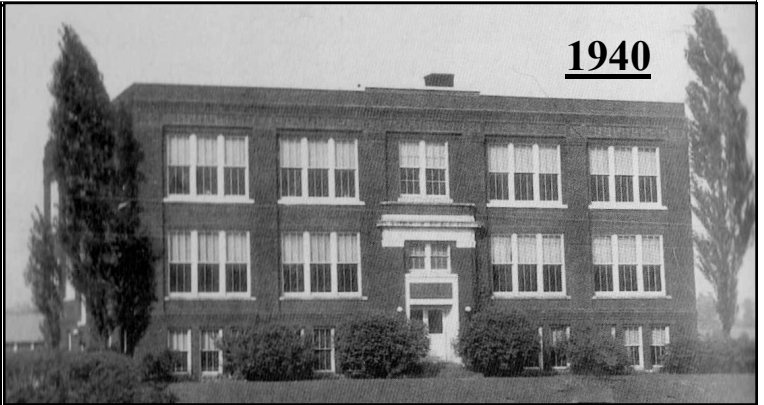
Bath School currently stands as a four floor, 63,362 square foot building located on 12.3 acres.

# History of Bath School—Building

1923



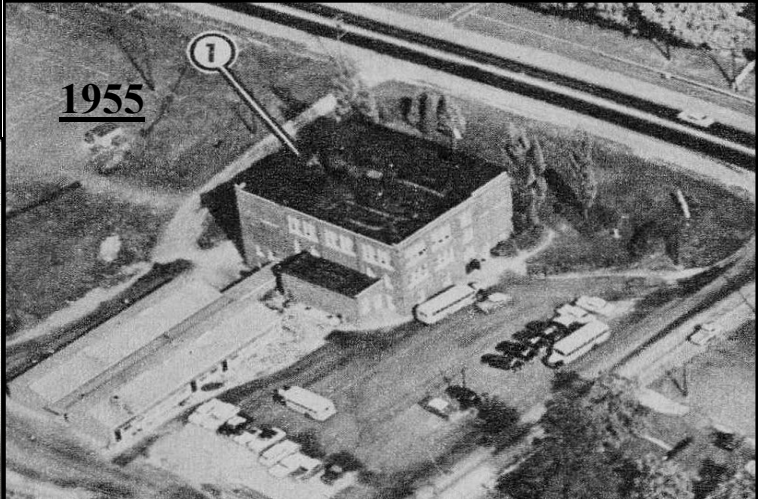
1940



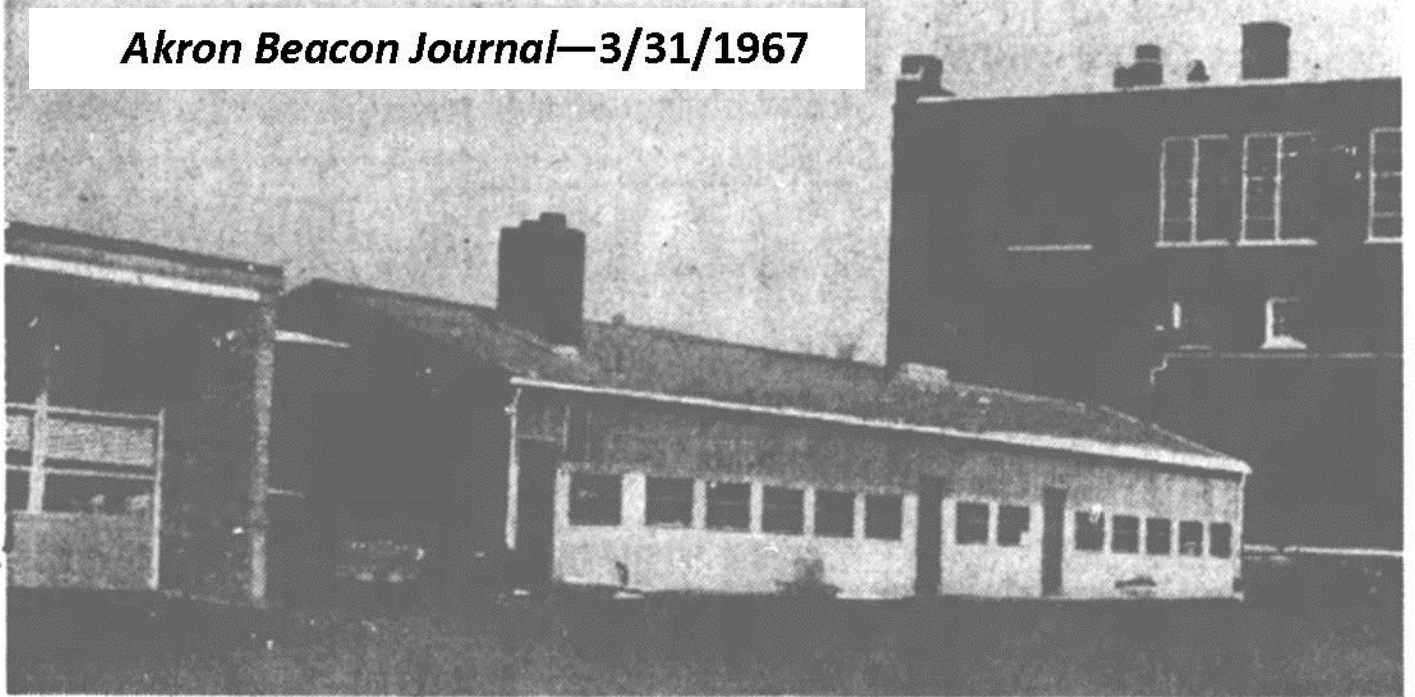
1940



1955



***Akron Beacon Journal—3/31/1967***



**THE "TIN ANNEX"** at Bath Elementary School will be on its way out after a Bath-Richfield Board of Education meeting at 8 tonight in East-view Junior High. The board is expected to award contracts for an 11-classroom addition to the Cleveland-Massillon rd. school. The new part will

be built between the three-story one-time Bath High, built in 1923, and the one-story west wing opened in 1962. The "tin annex," housing four classes, was constructed in 1955. The new addition also will provide administrative offices and kitchen facilities.

# History of Bath School—Building



2009



2012



# History of Bath School—Landmarks, Memorials and Traditions

## Haser Tree

The spruce tree was planted in the spring of 1931 in memory of William “Bill” Haser who died in an explosion at Bath on December 1, 1930 known as the [Bath Blast](#). The tree had to be removed in 2014 due to the new sewer system going in. Note: The tree was planted with the two Sourek spruce trees and were known as the [Haser-Sourek Trees](#).

## Sourek Trees

The spruce tree was planted in the spring of 1931 in memory of Betty Sourek, 17, and brother Joey Sourek, 6, who lost their lives in a home fire. Sourek road bears the family name. The tree had to be removed in 2014 due to the new sewer system going in. Note: The trees were planted with the Haser spruce tree and were known as the [Haser-Sourek Trees](#).

## Class of 1931 Bird Bath

The Bird Bath was a gift from the Bath High School Class of 1931.



## Bath School Annual Kickball Classic (2000-PRESENT)

The kickball tournament was the idea of teacher John Faust and, with the support of principal Fred Tomei and physical education teacher Don King, it became a reality in 2000. The is a round robin format where the 4th grade champion plays the 5th grade champion for the right to play the staff in front of the entire school. Only one 4th grade team has defeated a 5th grade team, and only one student team has beaten the staff). For several years, the winner played the winner at Monroe Elementary (Tallmadge) in a school versus school championship unfortunately that series ended due to scheduling conflicts. Today, it back to 4th vs. 5th grade tournament with the winner facing the staff. It is now run by physical education teacher Gina Pappano over a two day period in the spring.



Revere Vs. Tallmadge  
Traveling Trophy

## Eagle Etching

A design created and donated by sculptor Don Drumm and abrasive blasting donated by Newsome & Work Metallizing Co. It was completed On June 5, 2001.



## Kelly Tree

The was planted in memory of [Travis Kelly](#) in 2002, who tragically lost his life way too soon on April 28, 2002.



## Schuelein Tree

The was planted in memory of [George Schuelein](#) in 2002. George was a long time custodian at Bath and was extremely well liked by all who knew him!



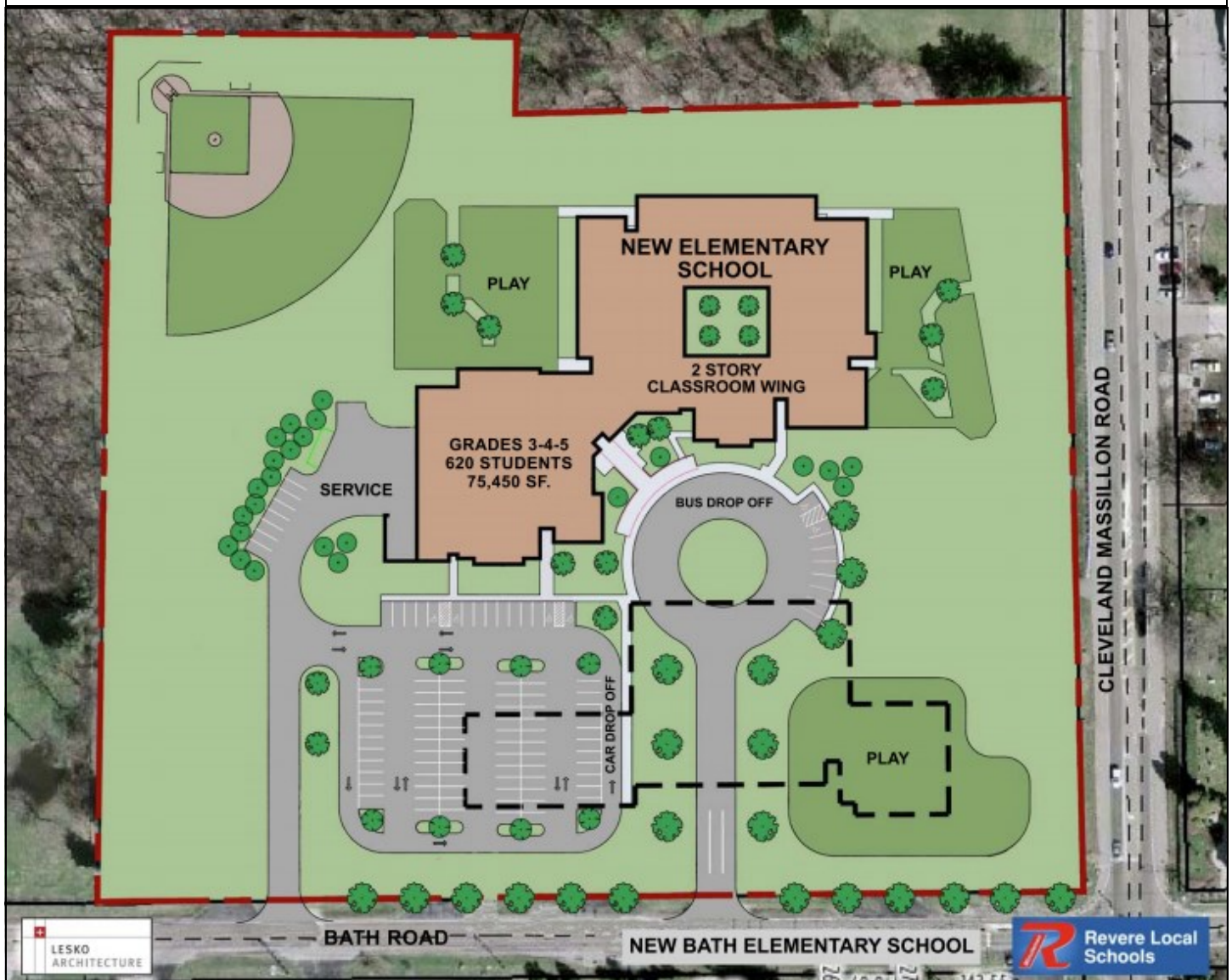
## Jones Tree and Bench

The bench was placed and the tree planted in 2006 in memory of Alexandra [Sasha Jones](#) (1994 -2006) who was taken too soon in a car accident.



## History of Bath School—New Building

On November 8, 2016 voters approved [Issue 45](#) which provided funding to build a new high school, elementary school, and renovating-improving Hillcrest and the middle school.



## History of Hillcrest Elementary

In 1955 a bond was passed (1,123 to 660) to build the “\$625,000 new junior high school on the northwest corner of Revere and Everett Roads.” The new 12-room school was being built to house Revere’s sixth, seventh, and eight grade students from the Bath and Richfield schools. The building also featured a “large utility room, combining the features of auditorium/stage, gym, and cafeteria.” In January of 1957 it was given the name “Hillcrest” by the board of education.

The construction of the building was completed in Spring of 1957 and it opened its doors in the Fall of 1957 with 342 students (Grades 6-8) under the leadership of Mrs. Esther Burkett who was previously the principal of Richfield School (Mrs. Caroline Clark took her position as principal at Richfield School). The official dedication took place on [April 27, 1958](#).

In November of 1957, Red and Gold were selected as Hillcrest’s school colors and three years later the Tiger was adopted as Hillcrest’s school mascot.

In the Fall of 1960 with the opening of Eastview Junior High (Revere Middle School), Hillcrest became a K-5 grade school with 395 students (Bath and Richfield schools also housed K-5th grades).

In 1961 when Eastview Junior High added freshmen, Hillcrest School (along with Bath and Richfield schools) added 6th grade becoming a K-6th grade building.

In 1962, Hillcrest hosted [Summit Country’s Gifted Program](#) for two years until funding was eliminated.

In 1963, Hillcrest School received an addition that extended the second hallway to the same length as the first hallway.

In 1980, [Hillcrest School became a primary building](#) (K-2), and Bath and Richfield schools became elementary buildings (3-6) for the residents of their communities.

In 1993, major additions were planned for Hillcrest School and the groundbreaking ceremony occurred on [June 10, 1993](#). Completed in 1994, there were two major additions put on. To the south a new hallway with ?? classrooms was added. To the north a new hallway with library, cafeteria, kitchen, and gymnasium was added with a new classroom hallway coming off of it (running perpendicular to the existing two hallways—north/south) with ?? classrooms.

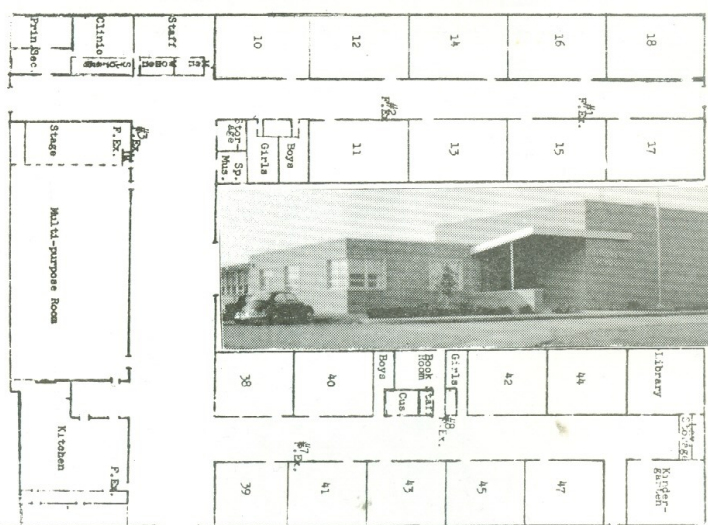
The old “utility room” (gym, stage, cafeteria) was turned into classrooms, teacher’s lounge, and classrooms. 6th graders went to Revere Middle School, 3rd graders went to Hillcrest, and 4th & 5th graders went to Bath Elementary.

Hillcrest School is a one floor, 88,922 square foot building located on 50.22 acres.  
—[Building Hillcrest](#)

# History of Hillcrest School—Building



## Hillcrest Elementary 1968



## HILLCREST PRIMARY SCHOOL ADDITIONS AND ALTERATIONS

### BOARD OF EDUCATION

JAMES F. GROW, JR., PRESIDENT - 1993  
 MICHELE HANKE, VICE-PRESIDENT  
 EDWARD BUTLER - 1993  
 MICHAEL SOFUL  
 DIANA SABITSCH  
 CHERIE MELBY  
 GEORGE STRICKLER

PATRICK CORBETT, SUPERINTENDENT

LESKO ASSOCIATES, INC., ARCHITECT  
 DELLAGNESE COMPANIES, CONSTRUCTION MANAGER

# 1994

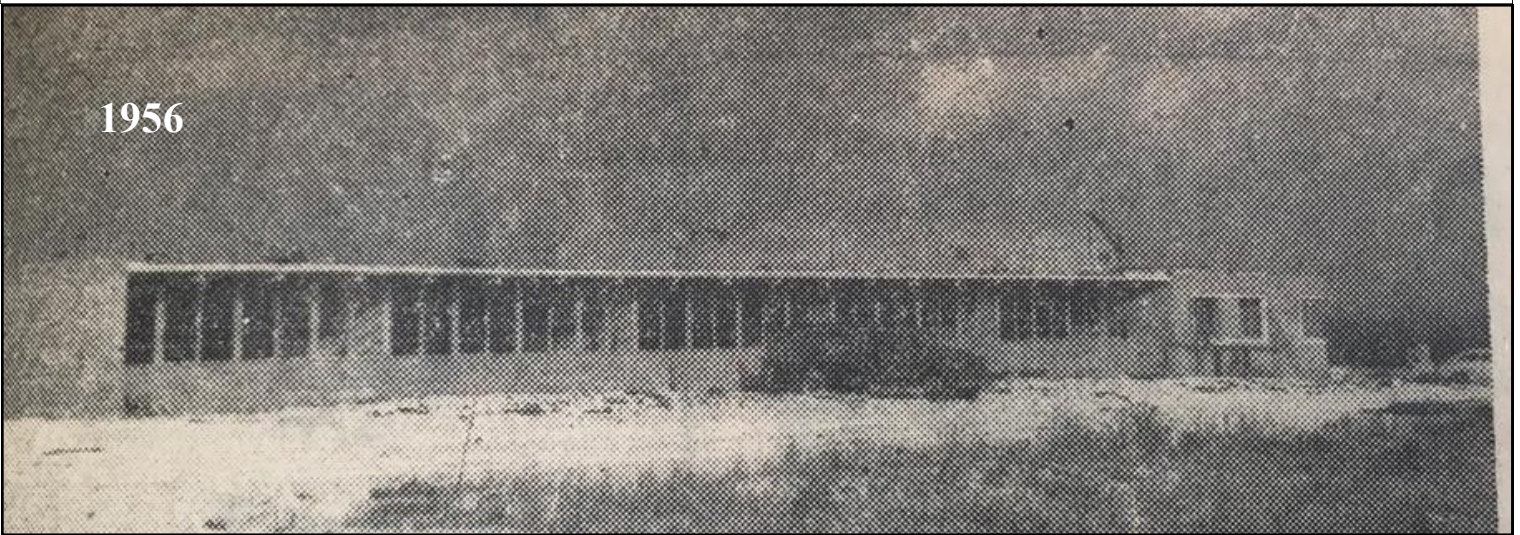
## Statistics at the Schools Opening (1958)

Cost of building .....\$349,930.50  
 Cost of equipment .....\$40,000.00  
 Cost of site .....\$13,000.00

Present enrollment .....352  
 Capacity of building .....360  
 Size of site in acres .....11 acres

# History of Hillcrest School—Building

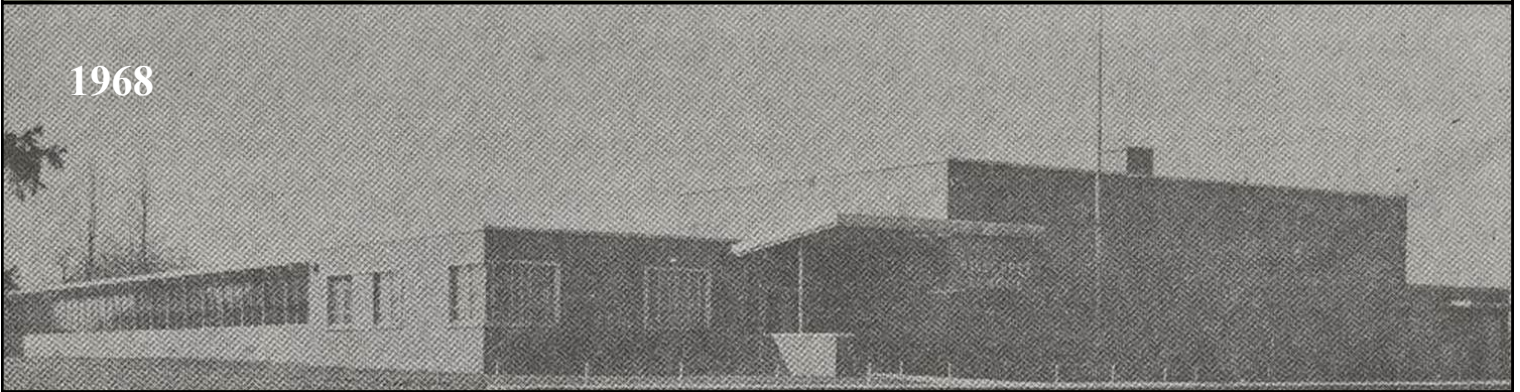
1956



1961



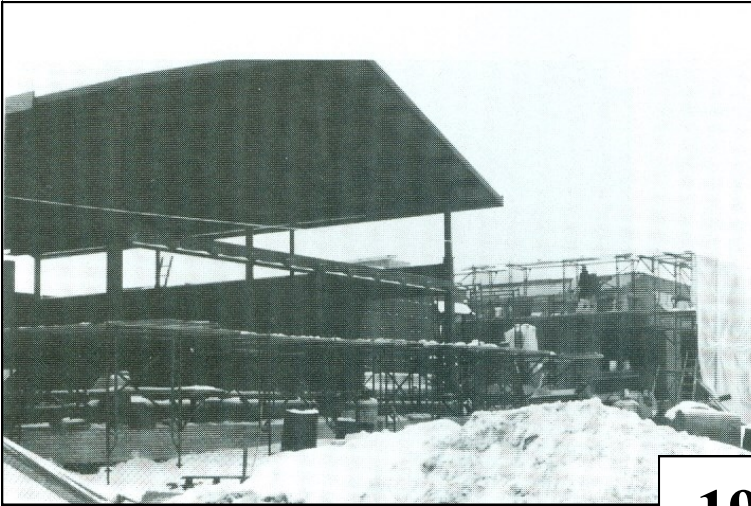
1968



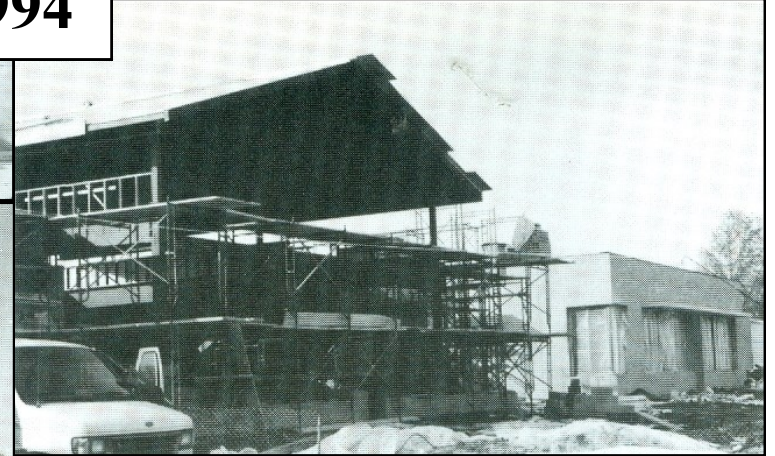
1990



# History of Hillcrest School—Building



1994



1995



# History of Hillcrest School—Landmarks, Memorials and Traditions

## Coffee Mug Collage Picture

The collage was made in ??? (1963?) with broken coffee mugs. The project was led by art teacher Bill Fox.



## Stanley Tree

The tree was planted in memory of Jim Stanley in 1994. Mr. Stanley was an electrician with the Local 06 IBEW (Electrician Union) and was doing work on the Hillcrest addition when he suffered a fatal heart attack. A tree was planted on the Red Playground in his memory.



## Hillcrest Nature Center

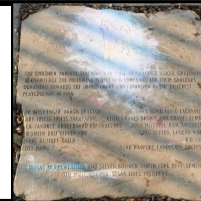
The Hillcrest Nature Center was established in 1997 as a combination memorial and educational garden. Bath resident and Hillcrest parent Susan Lines led, along with principal Fred Tomei, the effort to establish the garden. Donating services was Brown & Graves Lumber, R.B. Stout, Akron Tractor & Equipment, Jeff Knopp, Akron Plastics Industry, Goodyear, Richfield Safety Forces, North Hill Marble & Granite, along with countless other volunteers.

- **Matthew G. Smith Bench and Rock:** Was placed in 1997 as a memorial to Matthew G. Smith, a kindergartener who lost his battle with neuroblastoma on December 21, 1996.
- **Thornton Plaque:** Was placed in 2013 as a memorial to [Michelle "Shelly" Thornton](#), a student who lost her battle with neuroblastoma on February 20, 2013. She was a "[spirited, funny, and curious](#)" beautiful little girl.
- **9-11 Bench:** Was placed in 2001 to honor the victims of the 9-11 attacks. It was donated by the Richfield Safety Forces.



## Hillcrest Playground Improvement

In 1998, a group that included the Hillcrest PTA, donors, teachers, and students improved and expanded the Hillcrest playground.



## Wolfe Tree

The tree was planted in memory of [Norma Wolfe](#) (1943-2003) in 2003. Norma worked as an aid at Hillcrest as well as raised her kids in Revere Schools.



# History of Revere Middle School (Eastview)

## Statistics at the Schools Opening (1960)

Cost of building .....	\$768,758.00	Present enrollment .....	574
Cost of equipment .....	\$90,000.00	Capacity of building .....	600
Cost of site .....	\$19,186.00	Size of site in acres .....	11 Acres

In November of 1958, voters passed (57% in favor) a bond to build the \$750,000 junior high school on the corner of Spring Valley Road and Revere road. It was built to house the sixth, seventh, and eight graders with the plan to move 9th grade there when the high school's "population approaches 550 from its present 435."—[Building Revere Middle School](#)

In [deciding on a name for the new junior high school](#), they "considered outstanding community leaders or things of historical significance locally." On May 19, 1959, the district selected Frank Pixley Junior High. Mr. Pixley was a Richfield native who was a journalist and famous playwright. After months of receiving "considerable objection to the name", the school board rescinded the name decision on October 8, 1959. On November 23, 1959, Eastview Junior High was selected. An interesting name choice considering the building views south and not east.

In November of 1959, voters passed a second bond issue to account for construction overruns, to add a wooden gym floor, and to build a \$50,000 bus garage.

Eastview Junior High opened in the Fall of 1960 with "six hundred pupils in grades six, seven, and eight accommodate in 20 modern classrooms" with Esther Burkett serving as the principal. The official dedication occurred on [Sunday, April 16, 1961](#).

Eastview became a true Junior High in the Fall of 1961 when freshmen were added and the six graders were relocated to the elementary buildings (Hillcrest, Bath, and Richfield). Eight Additional classrooms were completed to account for the change. Freshmen were still afforded the opportunity to participate in high school activities (sports, Lantern, National Forensic League, etc.). The School newspaper was called the *Telstar* and was produced weekly by "journalism and graphic arts students."

Eastview selected the Patriot as their mascot and in [1971](#) adopted the New England Patriot's mascot as their mascot for the patriot.

In 1975, freshmen returned to the high school and Eastview was a 7-8 building.

On December 2, 1986, the board accepted a petition from the community to change the name from Eastview Middle School to Revere Middle School. On March 17, 1987, the board officially changed the name to Revere Middle School effective August 1, 1987.

In 1992 a bond passed to add major renovations to Revere Middle School. The ground breaking occurred on [November 15, 1993](#). A new wing was added to the west end of the school, which included a new library, science rooms, and 6th grade classroom hallway. It also included a new gymnasium with lockerrooms. Construction was completed in 1994.

In 1994 with the building additions and the closing of Richfield School, 6th graders were added to Revere Middle School making it a 6-8 building.

# History of Revere Middle School (Eastview)—Building



**EASTVIEW**  
JUNIOR HIGH SCHOOL

BOARD OF EDUCATION  
PAUL L. BAUMGARDNER, PRESIDENT  
LUCILLE A. WYATT, VICE-PRESIDENT  
JANE H. CAUFFIELD  
JAMES S. JACKSON  
JAMES E. RAND

HAROLD SCHWEISBERGER  
EXECUTIVE DEPT. OF SCHOOLS

TUCHMAN & CANUTE  
ARCHITECTS

FINACCI CONSTRUCTION CO.  
BUILDERS

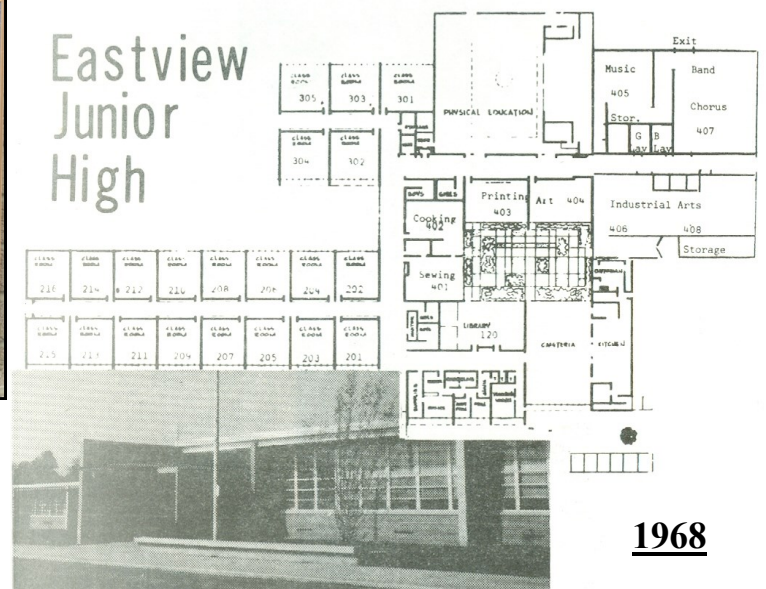
1960

**REVERE MIDDLE SCHOOL**  
ADDITIONS AND ALTERATIONS

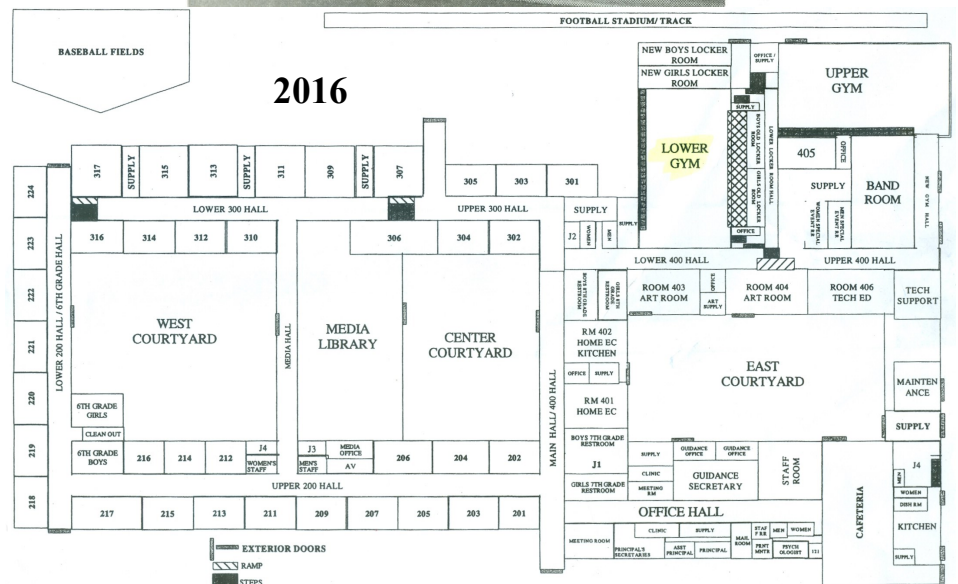
BOARD OF EDUCATION  
MICHAEL SOFUL, PRESIDENT  
DIANA SABITSCH, VICE-PRESIDENT  
EDWARD BUTLER - 1993  
JAMES F. GROW, JR. - 1993  
MICHELE HANKE  
CHERIE MELBY  
GEORGE STRICKLER

**1995**

PATRICK CORBETT, SUPERINTENDENT  
LESKO ASSOCIATES, INC., ARCHITECT  
DELLAGNESE COMPANIES, CONSTRUCTION MANAGER



**1968**

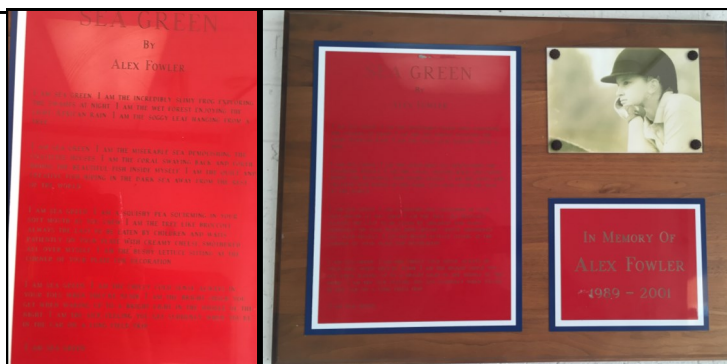


**2016**

## History of Revere Middle School (Eastview)—Landmarks, Memorials and Traditions

### Alex Fowler Plaque

The plaque was placed in memory of Alex Fowler (1989-2001) who died tragically in an [equestrian accident](#) on June 9, 2001.



### Lukity Bench

The bench was placed in memory of [Mike Lukity](#) (1988-2003).



### Ellsworth Trophy Case

The trophy case was placed in memory of [Jared Ellsworth](#) (1991-2003). In addition, his parents Kathy and Scott Ellsworth ran a basketball tournament in his memory for 12 years, that tournament continues today as [Revere Celebration Tournament](#).

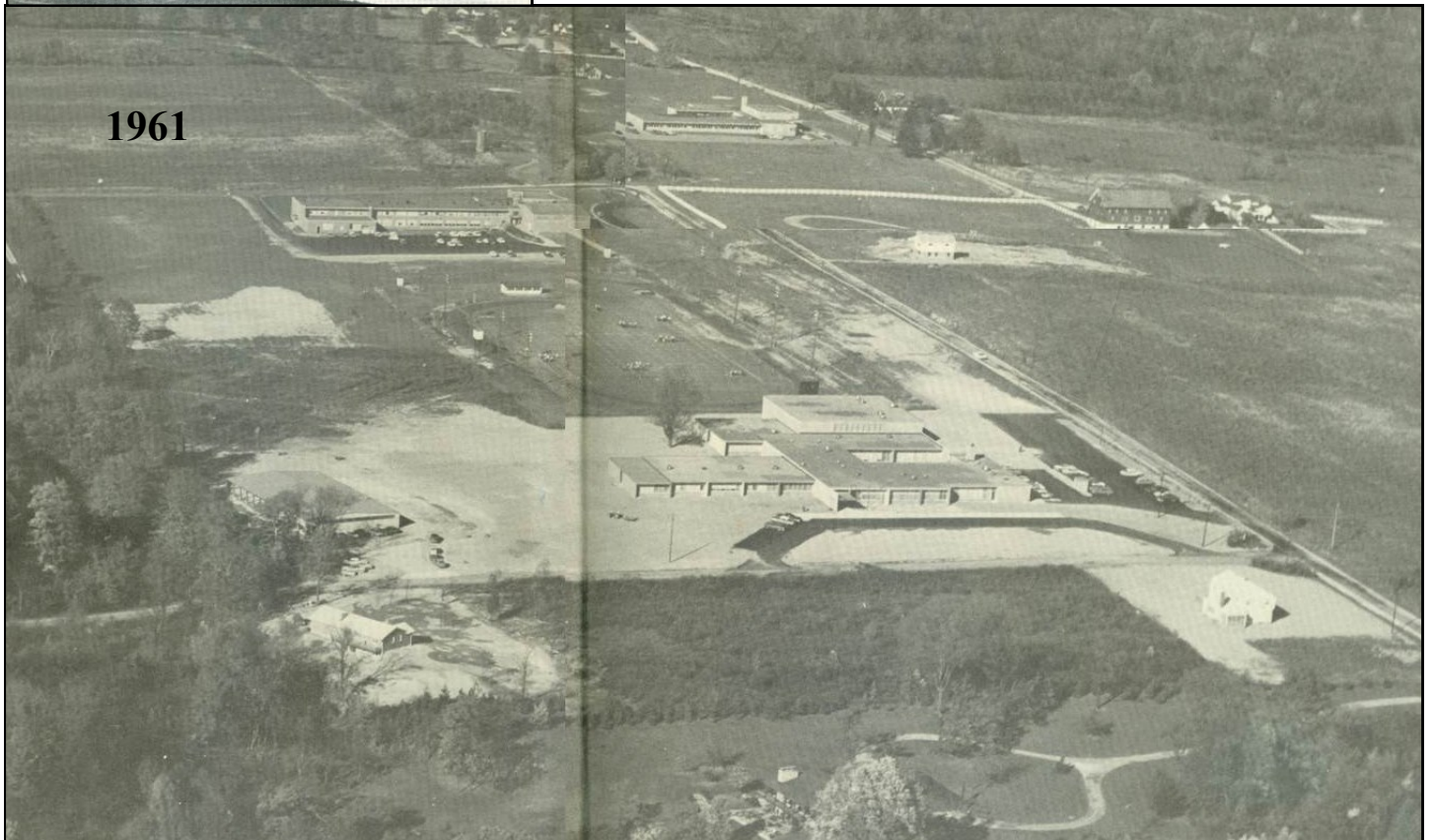
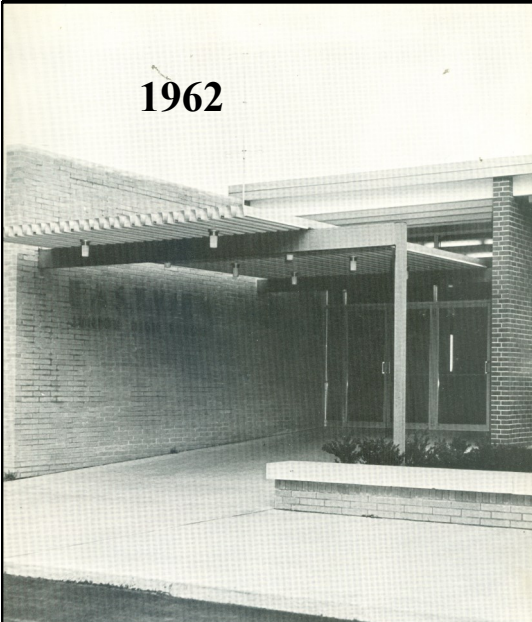
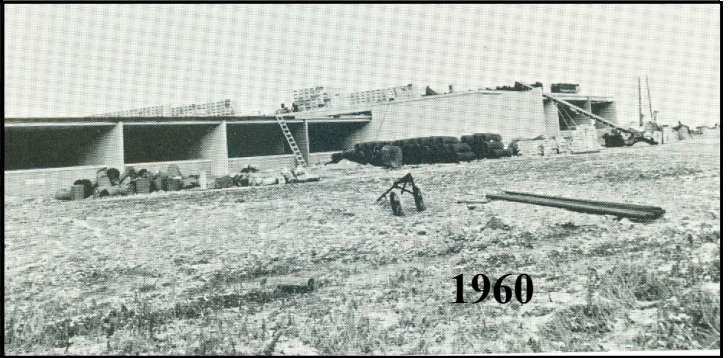
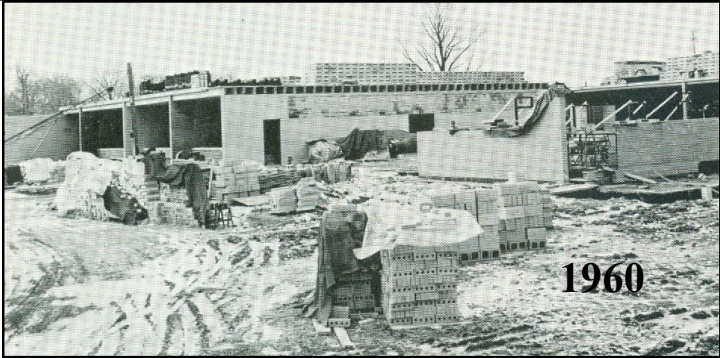


### Bennett Plaque

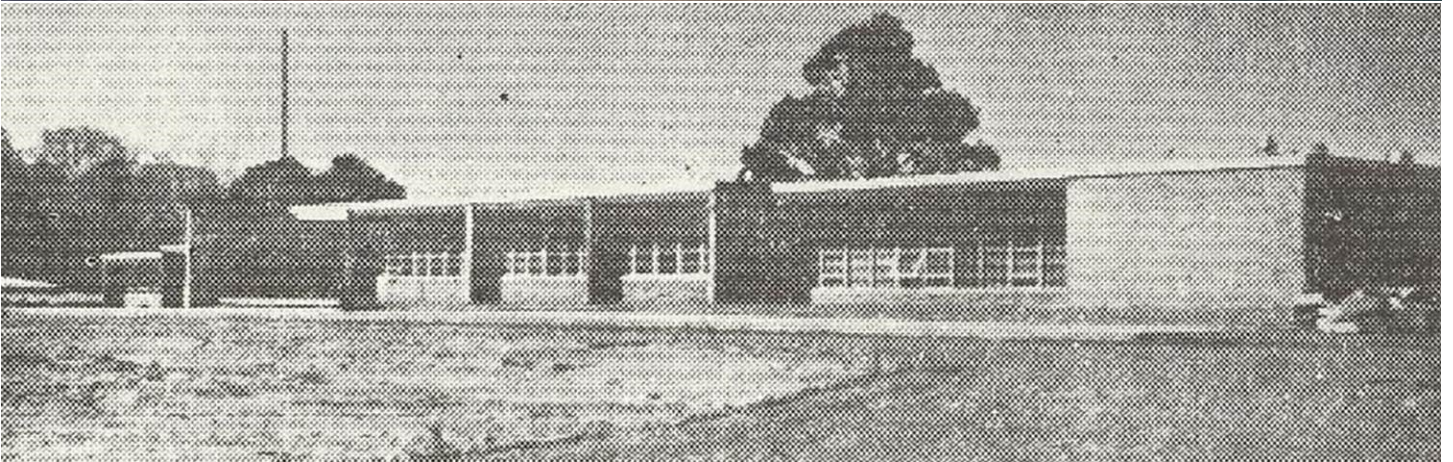
The plaque was placed in memory of [James Bennett](#) (1997-2012). James was a young man who endured a number of medical hardships and was lost too soon "[but will never be forgotten](#)."



# History of Revere Middle School



# History of Revere Middle School



# History of Revere High School

In the early part of 1950, The Bath-Richfield School Board supervised the purchase of 28 acres for the site of the new school at the intersection of Revere and Everett Roads.

On October 5, 1950, the school board selected “Revere High School” as the name for the new school. The name—which was eventually also selected as the name of the school district—was first suggested by long time teacher and coach Gordon E. Knapp based on the road the new school was being built on.

On November 13, 1950, the students voted Red, White, and Blue as the district’s colors and “Minutemen” was selected as the mascot based on the inspiration of the new name of the school.

The ground breaking for the new school occurred on [June 17, 1951](#). The school began construction in August of 1951. While the school was being built, high school students spent half a day at Bath School and half a day at Richfield School (9<sup>th</sup> and 10<sup>th</sup> graders at Richfield in the morning and Bath in the afternoon).

In February of 1952 the alma mater, [Revere Revere](#), was chosen. The music was composed by Professor David T. Plank (a former Bath Resident) and the words were written by his mother, Mrs. Eulalia Plank.

Publication of the Revere [Lantern](#) replaced the Bath school newspaper and the Richfield *Echo*. The yearbook, *Revere Review*, replaced the Bath [Hi-Spy](#) and the [Richfield yearbook](#). It changed its name from the *Revere Review* to the [Reverie](#) in 1972.

From 1950 to 1952 there was a complete union of all school activities, functions, and faculty. While the school was being built, Carl Coffeen served as the Superintendent and [Roy M. Pugh](#) (former principal at Bath) served as the principal. Upon moving into the consolidated building, Pugh served as Superintendent and [Harold Schweiserberger](#) (former Richfield principal) served as principal of the High School. The following year in 1955, Schweiserberger took over as Superintendent and [George Bayliss](#) became the principal.

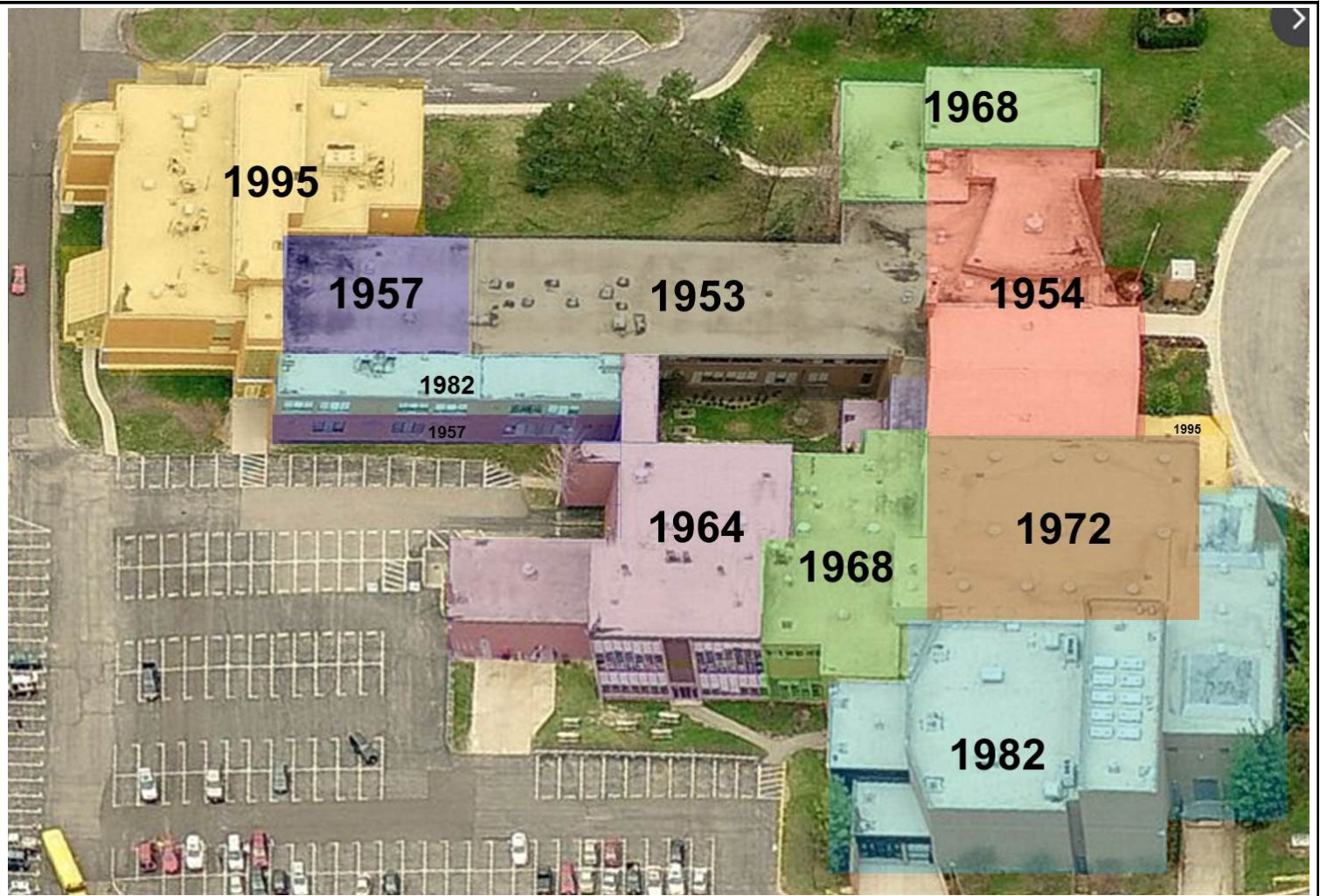
On [May 29, 1952](#) the first graduating class of Revere held their commencement in the Richfield School auditorium. On January 20, 1953, all high school students moved into the new school. The official dedication of the school occurred on [March 21, 1954](#).

The Revere PTA was formed on March 31, 1953 with Mrs. L. Wyatt serving as the first president. The Revere Alumni Association (RAA) was formed in July of 1953 by Mike McCoy, Wanda Barthlomew, and Craig Richmond.

Starting in the fall of 1961, Revere High School became a 10-12 school after the freshmen began attending Eastview Junior High. The Freshmen returned to RHS in 1975.

- [RHS Commencement Programs](#)
- [RHS Yearbooks](#)
- [RHS Class Photos](#)
- [RHS Class Profiles](#)
- [RHS Class Scrapbooks](#)
- [RHS Miscellaneous Documents/Pictures](#)

# History of Revere High School—Building



**REVERE SCHOOL**  
ERECTED 1951

**BOARD OF EDUCATION**  
MELVIN H. RAND PRESIDENT  
HIRAM H. BREWSTER MARGARET Y. METTLER  
MYRTLE E. HASLEM GLENN W. NOLAND  
LESTER W. SWARTZ CLERK

ROY M. PUGH SUPERINTENDENT  
HAROLD C. SCHWEISBERGER PRINCIPAL

WILLIAM BOYD HUFF ARCHITECT  
FARINAGGI CONSTRUCTION CO. CONTRACTOR

**1981**

**REVERE LOCAL SCHOOLS  
REVERE HIGH SCHOOL**

**BOARD MEMBERS**  
GLENN L. KEIPER PRESIDENT  
JOAN A. DEVENDORF VICE PRESIDENT  
JAMES F. GROW, JR.  
JAMES R. KROSKY  
RICHARD Y. MOORE 1979  
FLOYD L. RAMP 1979  
ELEANOR C. VIAL  
J. DAVID KLINGENSMITH SUPERINTENDENT

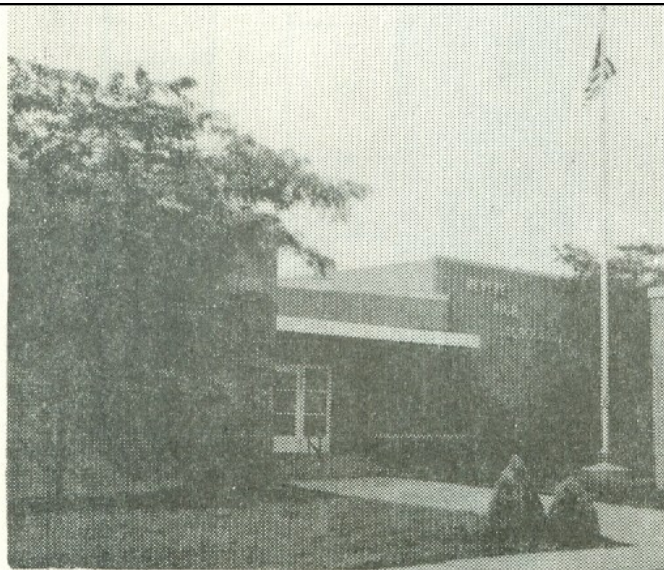
KAPLAN • CURTIS • AMBUSKE  
ARCHITECTS • PLANNERS • INC.

**REVERE HIGH SCHOOL  
ADDITIONS AND ALTERATIONS**

**BOARD OF EDUCATION**  
MICHAEL SOFUL, PRESIDENT  
DIANA SABITSCH, VICE-PRESIDENT  
EDWARD BUTLER - 1993  
JAMES F. GROW, JR. - 1993  
MICHELE HANKE  
CHERIE MELBY  
GEORGE STRICKLER  
PATRICK CORBETT, SUPERINTENDENT  
LESKO ASSOCIATES, INC., ARCHITECT  
DELLAGNESE COMPANIES, CONSTRUCTION MANAGER

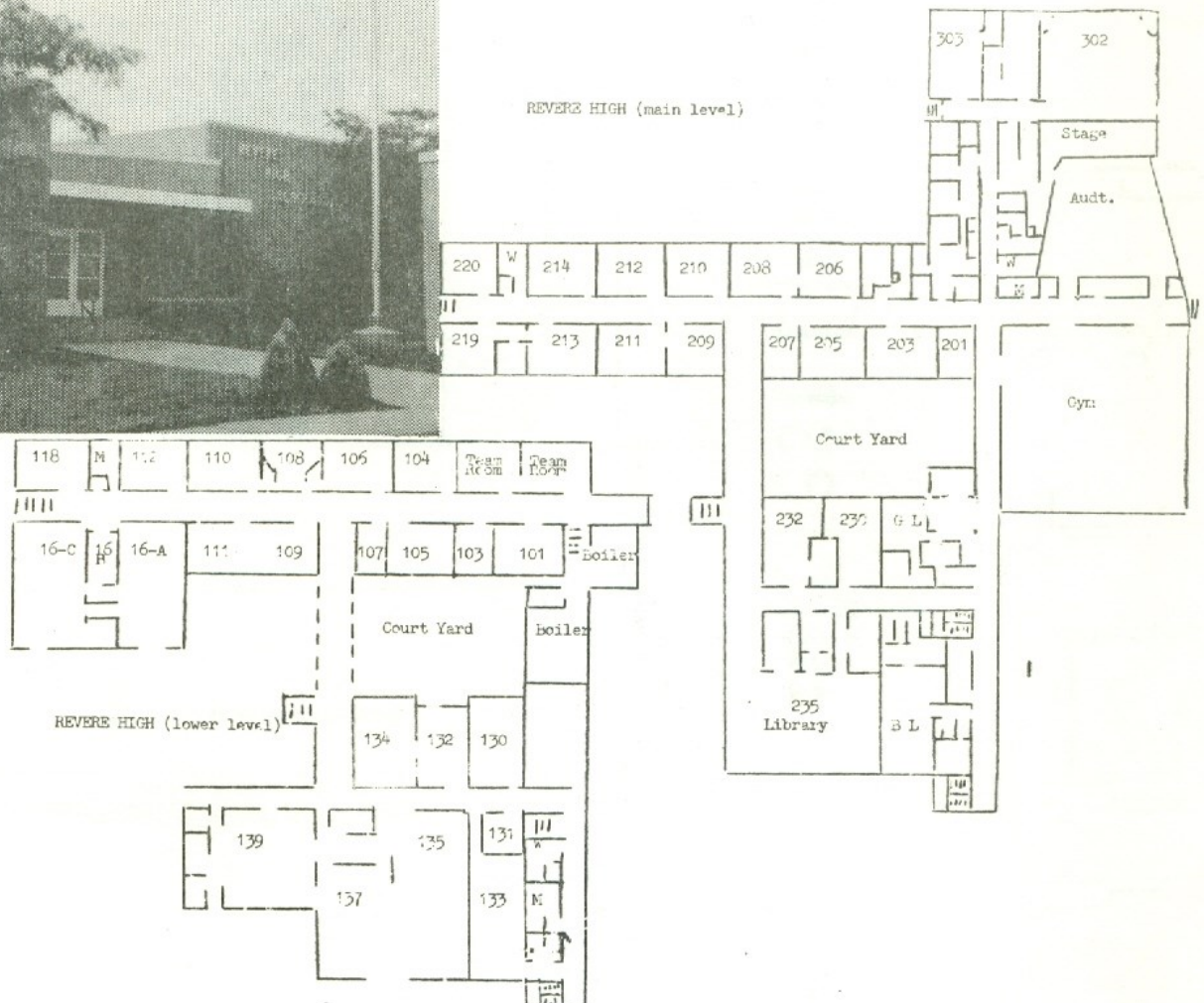
**1995**

# History of Revere High School—Building

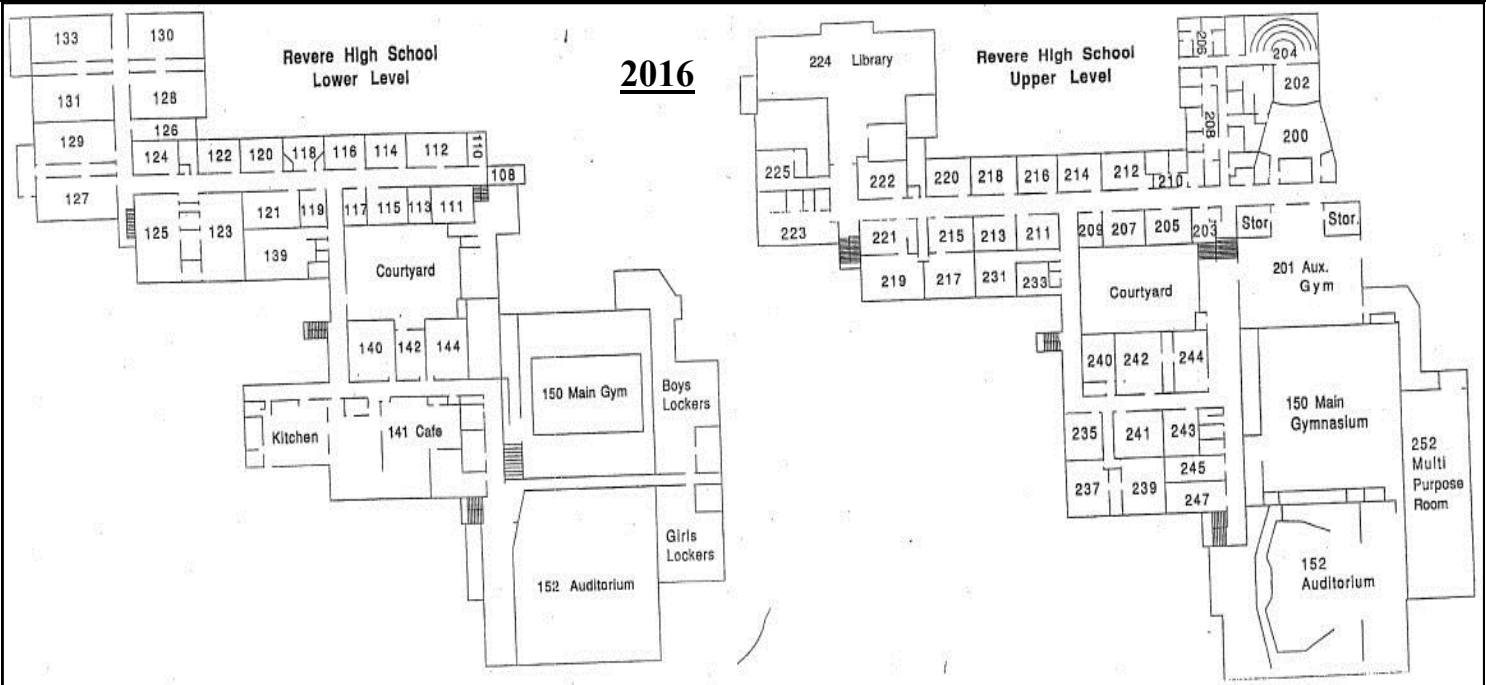


## Revere High

**1968**



**2016**



# History of Revere High School—Building

## Statistics at the Schools Opening

Cost of classroom section .....	\$443,891.32	Present enrollment .....	210
Cost of gymnasium and auditorium ....	\$153,846.00	Capacity of building .....	325
Cost of equipment .....	\$80,000.00	Seating capacity of gymnasium .....	650
Cost of site .....	\$9,000.00	Seating capacity of auditorium .....	362
		Size of site in acres .....	28

On June 17, 1951, a ground breaking ceremony was held for the new high school and construction began in August of 1951.

On January 20, 1953, all high school students moved into the new school. The original school was two floors and currently makes up the main two hallways of the current school. The cafeteria was up and running by the fall of 1953. A separate bond was passed in fall of 1952 to build a gymnasium and auditorium—they were finished by December of 1953. The gym (80' x 83') had a capacity of 650-700 people and the auditorium sat 350-375 people. (Note: In the current school—the original classroom section makes up the main two hallways, the gymnasium is now the Auxiliary Gym, the auditorium is now a classroom [Room 200] and the band & chorus practice rooms). The official dedication of the school occurred on [March 21, 1954](#).

In 1955, a bond was passed to add to RHS. In the Spring of 1957, addition extended the building further west and added six classrooms including an industrial arts shop. The new addition will increase Revere's capacity from the present 331 students to a maximum of 525 to 550 students.

In the fall of 1961, 9th graders were moved to Eastview. (Note: They would return in the 1975-1976 school year).

In 1963 a bond was passed to put another addition on to RHS. The addition added the eastern portion of the school with a cafeteria, kitchen, library, four classrooms, and breezeway bridge to connect to old building. It also remodeled the old library into a classroom and remodeled a number of math and science rooms. The official dedication occurred on Sunday, [November 1, 1964](#).

On November 8, 1966 a bond issue was passed to put two additions on to RHS. The first addition was on the north side of the building and added a band/choir room (still utilized today), the guidance offices (still used today), and additional office space. The second addition was on the east side and added new locker rooms (where 244 currently is), restrooms, home economics rooms, and storage.

In 1970 a bond was passed to add an addition which included a new gymnasium (the current gymnasium). The gym began use in the 1972-1973 school year but looked different than original design because of necessary [budget cuts](#) since the bids cost more than the bond. The old gym was converted into classroom space and was given the nickname "[Studio R](#)"—six open classrooms separated by 5' book shelves. After a few years it was converted again—3/4 library space and 1/4 study hall space. Eventually it became a fully dedicated library.

In 1975 the lower breezeway, once open to the outside, was enclosed "to allow students to be warmer on the cold winter days as they walked across).

In 1979, a bond was passed to add to RHS. The addition were new locker rooms, multipurpose room, auditorium, elevator as well as new classrooms to the art wing, renovations to the gymnasium, and enlarging the cafeteria. The addition was dedicated [December 13, 1981](#) and fully finished in spring of 1982.

In 1992 a bond passed to add major renovations to RHS. The ground breaking occurred on [November 15, 1993](#). A new wing was added to the west end of the school, it included bottom floor science rooms and second floor library, media room, and photography/graphics room. [Note: the old library was turned back into a gym—the auxiliary gym]. Construction was completed in 1995.

Revere High School is a two floor, 169,853 square football building located on 27.89 acres (RHS and RMS share the lot).

# History of Revere High School—Landmarks, Memorials and Traditions

## Senior Rock

The original rock was excavated from the original Revere High School foundation, it was too big to haul away so they placed it on the corner of Revere and Everett Roads. It received its first paint job shortly after the school opened. In 1968, however, students did not stop at painting the rock and began to paint the school as well. In response, the school board ordered the rock removed so a hole was dug and the rock was buried. But mysteriously a new rock reappeared. Several seniors from the class of '68 got a truck with a crane and transported a rock from Canton to Revere. Administration threatened to haul the new rock away but a petition by the students saved the rock. Today the painting of the rock continues!



## **Marianne Mertie Marquee**

The marquee was constructed in 1984 in memory of [Marianne Mertie](#). She died in a car accident on September 24, 1983—she was a senior at Revere.



## **Gordon E. Knapp Memorial Addition**

The RHS student council dedicated the new auditorium and main gym area to [Gordon E. Knapp](#) in 1981. Knapp was a teacher, coach, and principal in the district from 1941 to 1980. The day before Mr. Knapp officially retired, was involved in a fatal car crash on his way home.



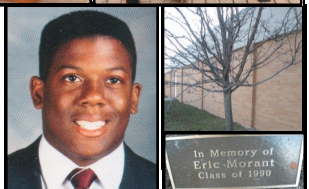
## **RHS Entrance Tree**

- **Strazinsky Tree:** The was planted in 1992 in memory of [Becky Strazinsky](#). She died March 13, 1992—she was a senior at Revere.
- **Flowers and Shrubs:** The Revere Alumni Association designed and built the landscape at the entrance.
- **Benches:** The benches were an Eagle Scout Project of Michael A. Vince along with the planting of shrubbery.
- **Revere Sign:** The concrete Revere Sign was a gift from the Class of 2008 and the RHS Student Council.
- **Gilbert Bench:** The granite bench was added in memory of [Gunnery Sergeant Robert Gilbert II](#) who lost his life while serving in Afghanistan.



## **Eric Morant Memorial Tree**

The tree was planted in 1996 outside the William Moats Field House in memory of Eric Morant. Eric graduated from RHS in 1990 and was a key member of the 1989 championship football team. Eric was killed in a fatal car crash.



## **Chris Bailey Memorial Tree**

The Tree was planted outside the cafeteria in memory of Chris Bailey—Class of 1993.



## **Veterans Memorial**

The RHS Veterans Memorial is located between the football, baseball, and softball fields. The Revere War Memorial was dedicated in recognition of all Revere alumni and staff who have defended their country through service in the Armed Forces of The United States of America. The first phase was completed by Kevin Papp as an eagle scout project in 2008 and included a walkway, two benches and a flag pole. The second phase was completed by David Morar as an eagle scout project in 2010 and includes 2 additional flag poles and a tree planted in memory of Gunnery Sergeant Robert Gilbert II. The third phase was completed by placing a bench and memorial plaque in memory of [JinMin "Kasey" Lee](#) who passed away in 2012.



# History of Revere High School—Landmarks, Memorials and Traditions

## Virginia Ocasek Memorial Scholarship

[Mrs. Virginia Mae Hejduk Ocasek](#) taught in the Revere Schools for 33 years. This scholarship is “given in memoriam for her dedicated services as teacher, adviser, scholar, and friend.”



## *Students in Harmony*

[Students in Harmony](#) sculpture was a project started by Ann Griffith and Susan Lucas along with Principal Jim Wilkens and the help of a \$10,000 Jennings Grant to beautify the RHS courtyard.



## Matthew Bast Memorial Tree

The tree was planted in 1986 in the high school courtyard in memory of [Matthew Bast](#). Matthew was killed in a fatal car crash on May 4, 1986—his senior year.

# Revere High School Enrollment Figures

YEAR	TOTAL	GROWTH	Graduates	12th Grade	11th Grade	10th Grade	9th Grade
1952	160	15	43	43	47	46	24
1953	170	10	41	40	40	47	42
1954	192	22	42	42	37	41	72
1955	242	50	42	43	51	73	76
1956	280	38	42	42	64	68	106
1957	336	56	69	72	62	97	108
1958	371	35	60	61	83	105	123
1959	430	59	78	79	103	117	132
1960	476	46	89	90	123	131	133
1961	530	54	109	112	111	125	185
1962	584	54	103	98	116	173	192
1963	656	72	114	111	157	209	176
1964	749	93	155	152	192	181	221
1965	750	1	188	186	165	206	191
1966	786	36	160	156	206	188	232
1967	858	72	194	195	188	220	256
1968	924	66	168	170	217	288	251
1969	984	60	200	193	256	263	265
1970	1091	107	255	245	249	284	303
1971	998	-93	233	235	250	275	240
1972	1012	14	256	245	260	235	261
1973	1178	166	304	291	280	315	279
1974	1186	8	292	277	313	292	289
1975	1159	-27	306	305	269	292	292
1976	1162	3	279	288	275	286	322
1977	1163	1	269	268	288	314	292
1978	1137	-26	288	285	283	295	271
1979	1148	11	296	301	276	272	304
1980	1099	-49	258	271	276	301	264
1981	1061	-38	290	277	286	267	218
1982	1044	-17	285	281	261	224	274
1983	979	-65	259	255	212	264	244
1984	967	-12	219	220	230	246	272
1985	1018	51	240	241	247	278	253
1986	983	-35	248	252	278	256	201
1987	934	-49	278	279	245	211	200
1988	820	-114	240	242	215	204	161
1989	790	-30	223	225	206	171	190
1990	745	-45	196	200	167	193	189
1991	776	31	174	178	200	196	206
1992	810	34	187	201	196	210	217
1993	807	-3	185	192	211	207	204
1994	841	34	209	210	203	201	228
1995	840	-1	198	211	198	227	217
1996	844	4	190	197	225	208	221
1997	872	28	222	240	206	218	226
1998	902	30	203	219	226	233	240
1999	921	19	213	227	235	237	236
2000	923	2	234	245	240	227	222
2001	953	30	231	237	225	225	272
2002	952	-1	224	222	220	264	244
2003	949	-3	220	223	221	264	244
2004	924	-25	249	254	243	234	198
2005	909	-15	238	242	235	200	236
2006	903	-6	222	229	204	240	237
2007	916	13	198	202	230	229	259
2008	965	49	229	229	226	255	255
2009	963	-2	218	220	261	254	230
2010	980	17	252	260	256	226	246
2011	929	-51	241	243	226	237	225
2012	897	-32	222	223	232	226	217
2013	859	-38	224	226	223	217	195
2014	837	-22	219	220	219	196	203
2015	812	-25	211	211	198	205	198
2016	836	24	197	197	211	204	224
2017	840	4		209	211	227	193
2018							
2019							
2020							

\*9-12 numbers based on the number provided by the school or appearing in the yearbook (if district numbers unavailable)  
 \*\*Graduates based on the names listed on the commencement programs

## Revere Alumni Hall of Fame

The Revere High School Alumni Hall of Fame was created in 1992 under the leadership of Bill Holko (RHS Principal) to honor Revere High School graduates who have distinguished themselves. Nominations are submitted to the HOF Selection Committee through the end of February for consideration of induction in the spring (at the commencement ceremony).

INDUCTEE	CLASS	VOCATION	INDUCTION
Dr. William Moats, M.D.	1954	Physician	6-7-92
Richard Munsey	1972	Police Officer	6-13-93
Russell Vernon	1956	Businessman	6-13-93
Lee Merrill	1978	Actress/Singer	6-12-94
James Cox	1975	Lt. Col/Physician	6-8-96
Anthony Manna	1979	Attorney	6-8-96
Jane Scharff	1972	Nurse	6-8-96
Connie P. Fournier	1967	Attorney	6-8-96
Michael A. Kukral	1978	Professor/Author	6-7-98
Diane Snow	1976	Professor/Medical Researcher	6-7-98
Robert Merzweiler	1972	Businessman	6-6-99
Nancy Schlichting	1974	Administrative Officer	6-6-99
Cindy (Nero) White	1975	Internal Sports Ministry Leader/Editor	6-6-99
William Barsan	1968	Physician	6-11-00
Andy McCollum	1988	Professional Football Player	6-11-00
Jay W. Cooper	1966	International Humanitarian Assistance Director	6-10-01
Lynda Durrant-Lemmon	1973	Author	6-10-01
Kathleen A. Miller, BCTS	1979	Embryologist & Andrologist	6-9-02
Marija Tempo	1966	Flamenco Artist	6-9-02
Larry Zavodney, Ph.D., PE	1969	Professor	6-9-02
John Beckderf	1978	Cartoonist	10-3-03
Steven Marks	1977	Entrepreneur	10-3-03
Donald Murphy	1965	Optometrist	10-3-03
David Weber	1964	Educator	10-1-04
Jacqueline C. Bresnahan	1965	Ph.D.	6-4-06
Karl E. Jandrey	1985	DVM DACVECC	6-1-08
Siri Terjesen, Ph.D.	1993	Author	6-1-08
GYSGT. Robert L. Gilbert	2000	Military	6-6-10
John "Preston" Stewart	1963	Military	6-6-10
Dr. Jon Weingart, M.D.	1979	Professor/Medical Researcher	6-5-11
Barbara (Nagel) Rosene	1978	Vocalist	6-5-11
Jen (Penko) French	1989	Entrepreneur/Paralympian	6-3-12
James Kirby Martin, Ph.D.	1961	Professor/Author	6-3-12
Dr. Frederick Fritsch	1971	Olympic Athlete (1976 & 1984)	6/1/13
Kevin Gore	1984	Businessman	6/1/13
Jerry Hollendorfer	1964	Thoroughbred Horseracing Owner/Trainer	6-1-14
Dr. Ralph Pim	1967	Professor/Author	6-1-14
Dr. Sherman W. Horn II	1965	Physician, Author, Teacher	5-31-15
William Fairweather	1968	U.S. Senior Intelligence Officer	5-31-15
Dr. Scott Radloff	1972	Economist	5-22-16
Colonel Michael J. Borgschulte	1986	Military	5-22-16

## Revere Distinguished Educator Award

The Revere Distinguished Educator Award was created in 2000 under the leadership of the Revere Alumni Association (RAA) and alumnus Tim Godard to honor former and current Revere School District personnel who have made a positive impact on our kids, schools, and community. Nominations are submitted to the DEA Selection Committee through the end of May for consideration of introduction in the fall (at the faculty/staff convocation ceremony). Past recipients are recognized with a plaque that hangs in the high school's main entrance by the offices.

HONOREES	YEARS AT REVERE	POSITION(S)
Richard "Buzzy" Davis	1954-1979	Custodial Staff (RHS)
Evelyn Bruner	1954-1970	English (RHS)
Virginia Ocasek	1954-1974	English, Journalism, Latin (RHS)
Esther Allard	1954-1975	1st and 2nd Grades (BES)
Eugene Glick	1954-1975	Principal (RMS)
Gordon Knapp	1954-1980	Bookkeeping, World History, Administration (RHS)
Guelda Jones	1955-1981	4th and 5th Grades (HES-BES)
Jack Greynolds	1957-1969	Coach, Physical Education, Social Studies (RHS)
Fred Ost	1958-1990	Coach, Business, Administration (RHS)
Al Smesko	1959-1994	Coach, Physical Education, Health (RHS)
Letitia Barsan	1960-1986	1st Grade (HES)
Eugene Palmer	1960-1990	Mathematics (RHS)
Doris Clay	1963-1984	French (RHS)
Evan Case	1966-2003	Music (BES)
Angelina Cardina	1966-2003	Administrative Staff (RMS)
Marilyn Woodling	1966-1996	Business, Typing (RHS)
Joe Pappano	1966-2002	Coach, Physical Education, Health, Driver's Ed, OWE (RHS)
Mary Ryan	1970-1997	Music (RES)
Ed Engler	1970-1998	Social Studies (RHS)
David Weber	1970-2003	History (RHS)
Charles Walker	1971-2006	Art (RHS)
Charles Stark	1972-2008	Coach, Science (RHS)
Gladys Liss	1975-1997	Kindergarten & 2nd Grade (HES)
Joe Zwisler	1976-2002	Coach, English (RMS)

# History of Revere High School

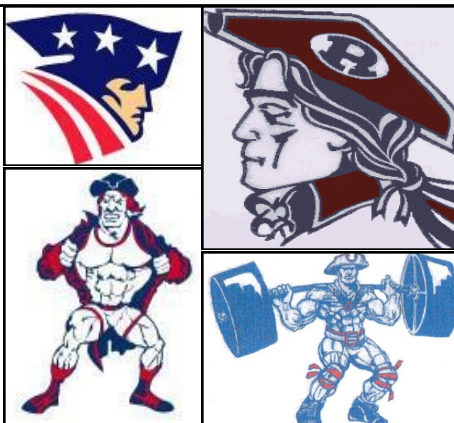
**REVERE MINUTEMEN:** On October 5, 1950, the Bath-Richfield school board selected “Revere High School” as the name for the new combined high school. The name, which was eventually also selected as the name of the school district, was first suggested by long time teacher and coach Gordon E. Knapp based on the road the new school was being built on—Revere Road. On November 13, 1950, the students voted Red, White, and Blue as the district’s colors and “Minutemen” was selected as the mascot based on the inspiration of the new name of the school and the colors.



Revere’s initial logo for the mascot was based on *The Minute Man*, a statue by Daniel Chester French erected in 1875 in Concord, Massachusetts. This image still serves as the official logo for RHS and is used in the school’s emblem. (L-R): Official Logo, *The Minute Man* statue, and the school emblem.



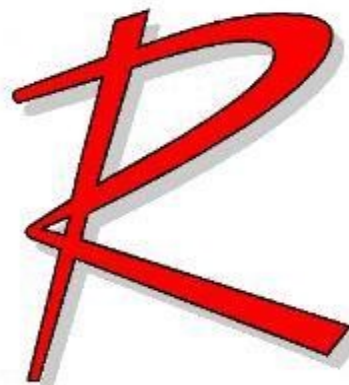
The picture that appears to the left is the current logo used by the Revere Athletic Department. The remaining pictures are samples of what different RHS sports have used over the years.



# History of Revere High School

**REVERE “R”:** Revere has used a number of different style R’s to represent the district over the years—some were official and some were not. In recent years, the district has adopted the Magneto Font **R** as the official style for Revere. The initial concept of the Magneto **R** was introduced by RHS student Tyler Thurn in the Spring of 2003 when he proposed to redesign the football helmets under new coach Terry Cistone. Cistone and Thurn modified the **R** slightly and the Magneto **R** was used on the helmet in the Fall of 2003. Over the next 5 years, the district unofficially adopted it as the Official R—the Revere “**R**”.

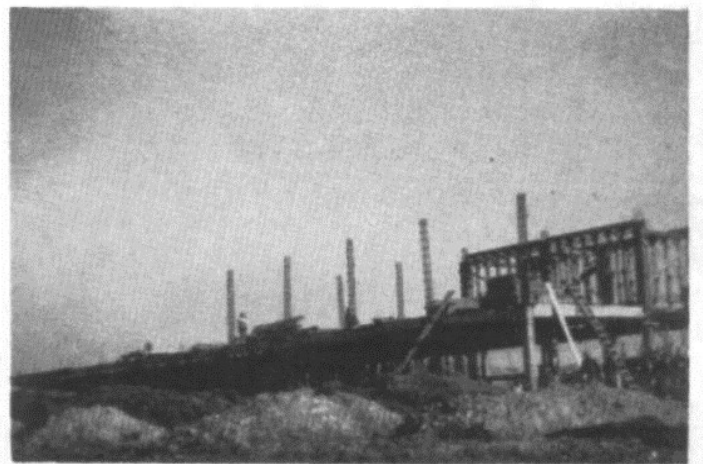
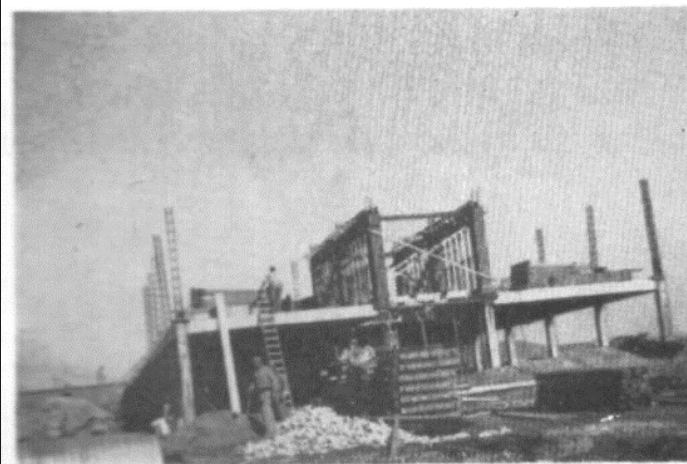
The logo that appears to the left is the official Revere “R”. The remaining logos are samples of what had been used over the years.



# History of Revere High School

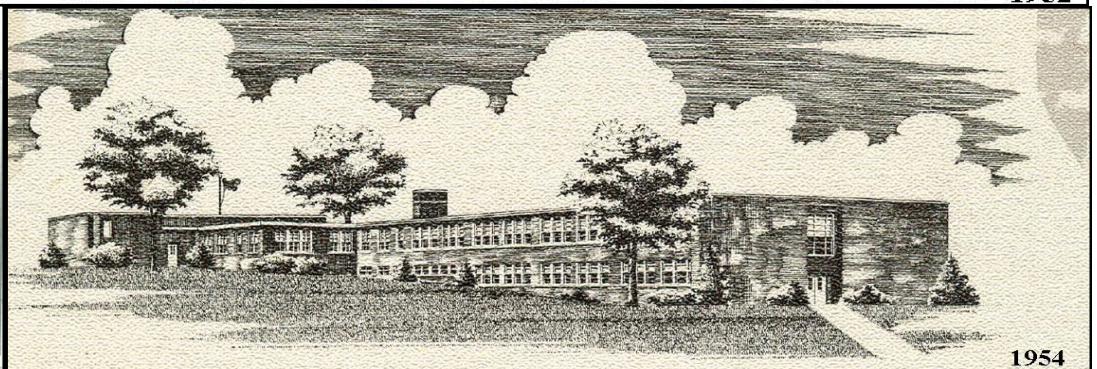


JUNE 17, 1951  
FIRST MOVEMENT OF SOD FOR REVERE HIGH SCHOOL



THE FUTURE REVERE HIGH SCHOOL

1952



1954

# History of Revere High School

1952



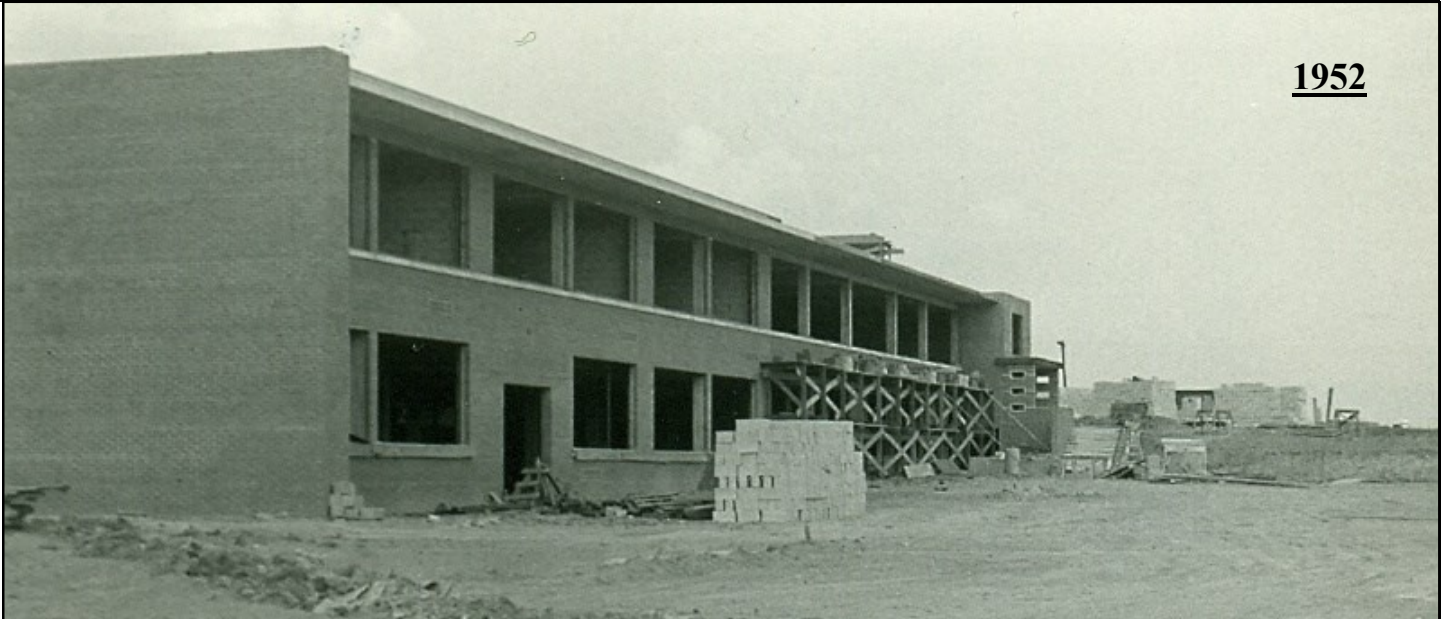
1952



1952



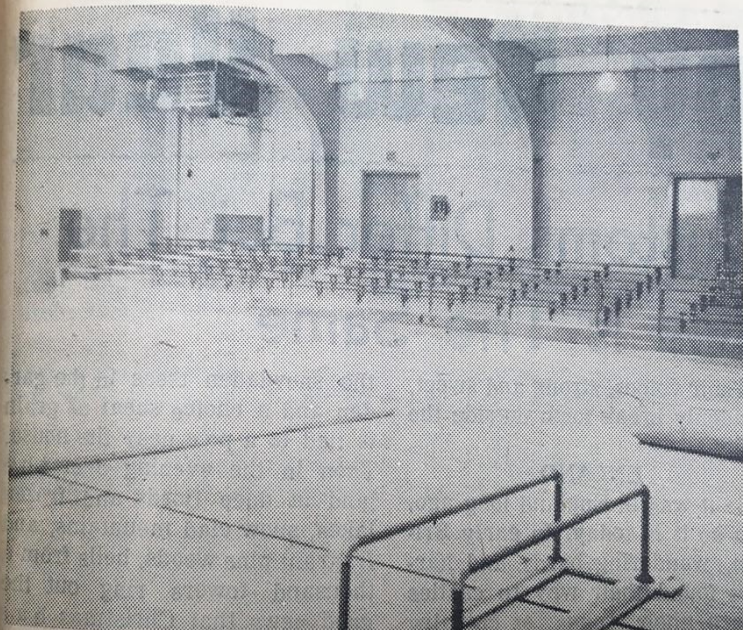
1952



# History of Revere High School



## Revere's First Graduating Class—The Class of 1952



The new gymnasium, looking toward the permanent bleachers. In the foreground is a part of the wrestling and acrobatic equipment.

Friday, January 29, 1954

## Auditorium and Gymnasium Now Under Construction

March 13, 1953

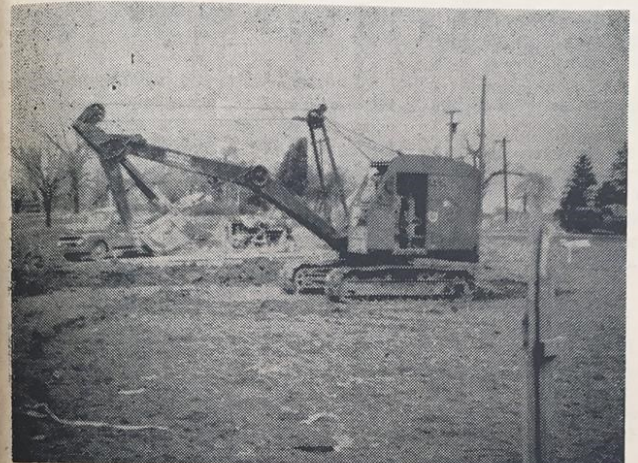
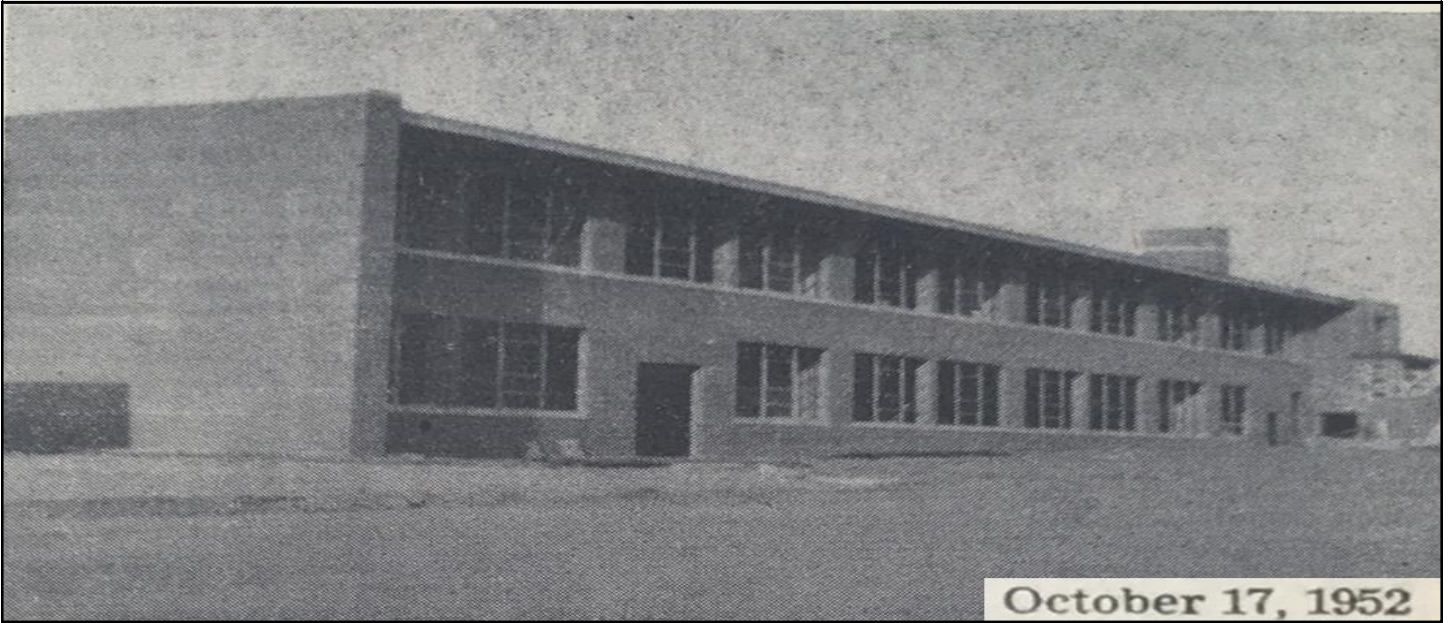


Photo by Jim Kamps

Excavation on the auditorium and the gymnasium was begun the last week of February, and as this issue of the LANTERN goes to press, the excavating has been completed and the "footers" have been laid.

# History of Revere High School



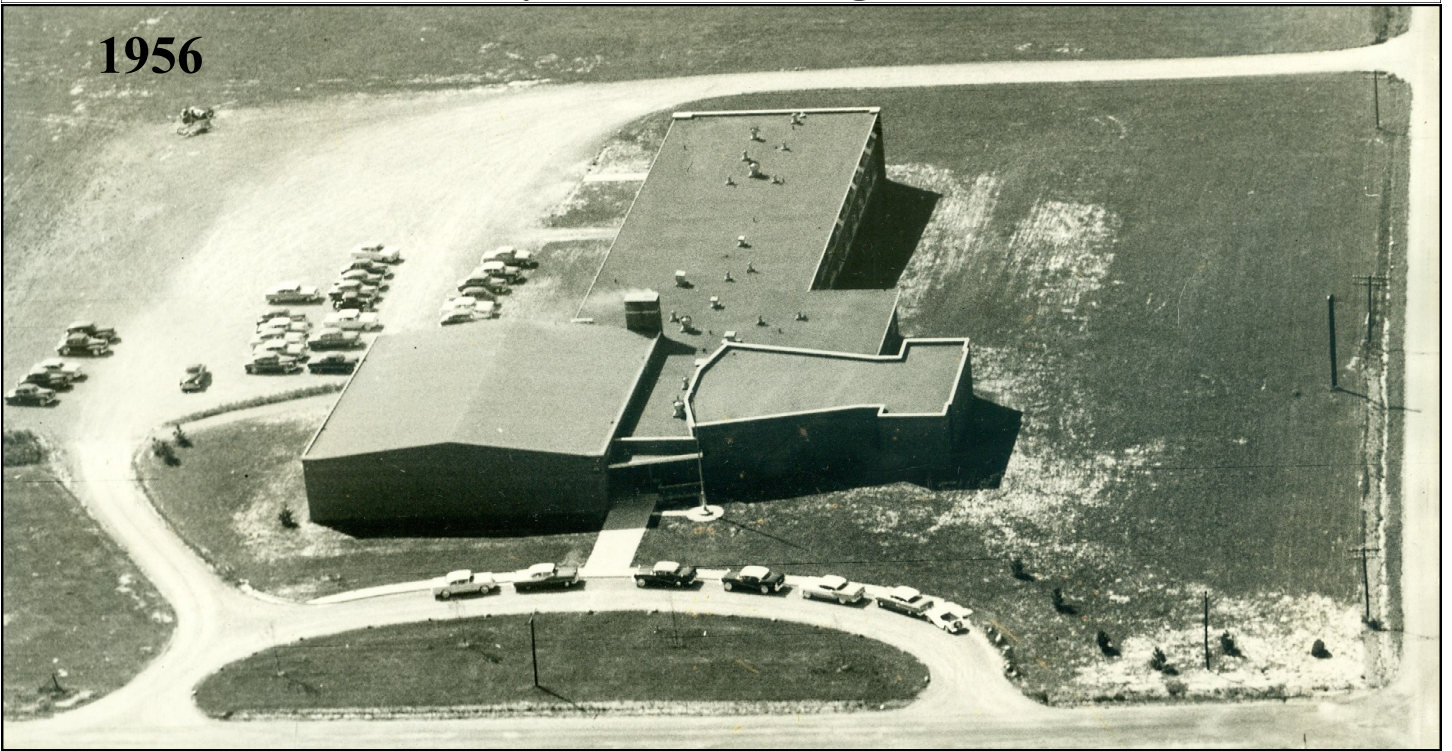
## *REVERE HIGH SCHOOL*

Revere High School, which stands on the corner of Revere and Everett Roads overlooking both Bath and Richfield townships, is the result of the merger of the Bath and Richfield school districts. It is built to house 300 students, which allows for an increase of 50% of the present enrollment.

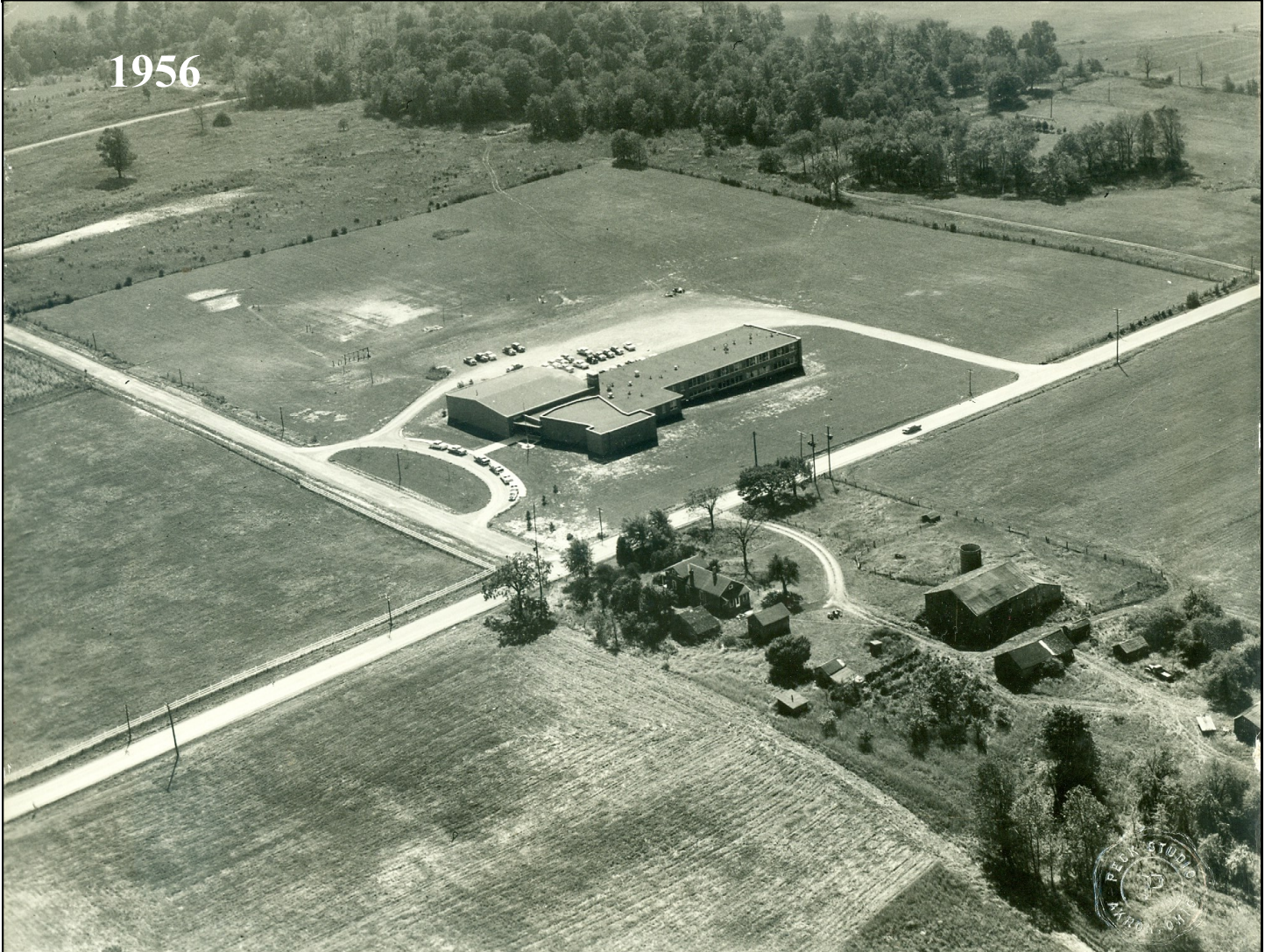
Classes were held here for the first time on January 27, 1953.

# History of Revere High School

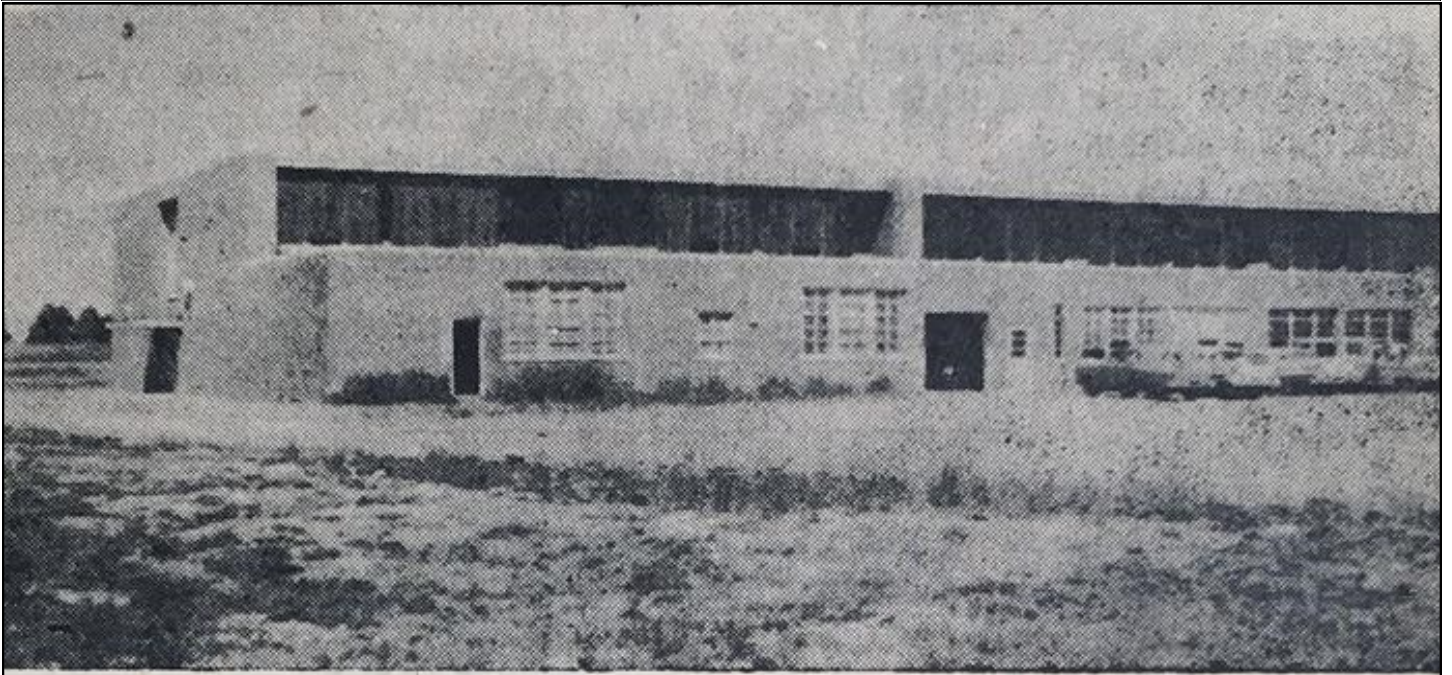
1956



1956

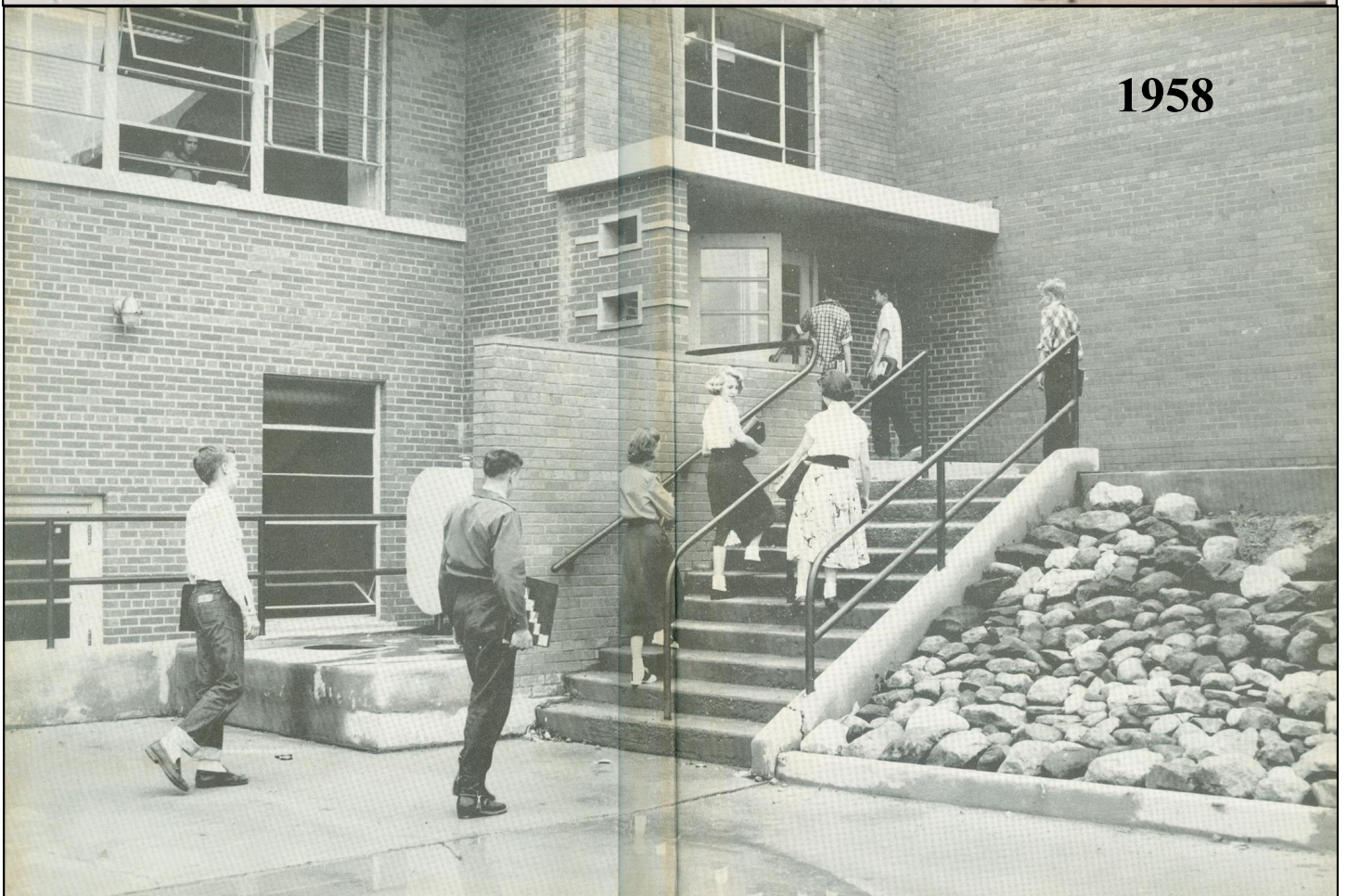


# History of Revere High School



New Revere Addition

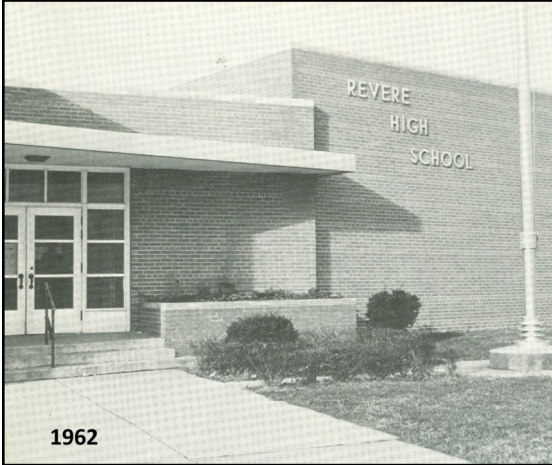
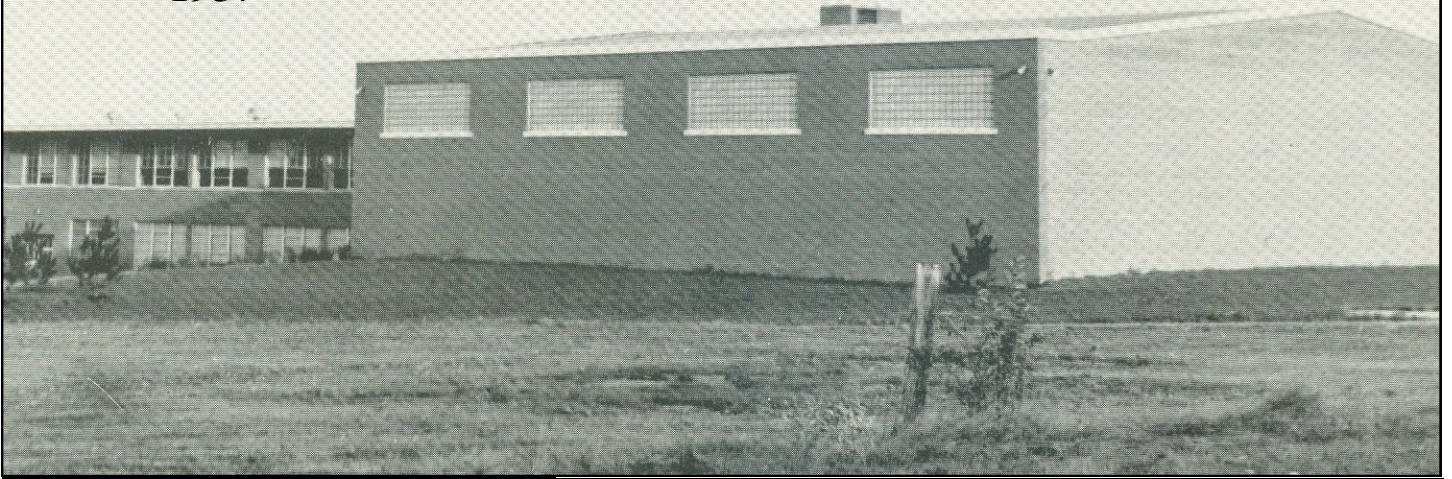
September 27, 1957



1958

# History of Revere High School

1957



1962



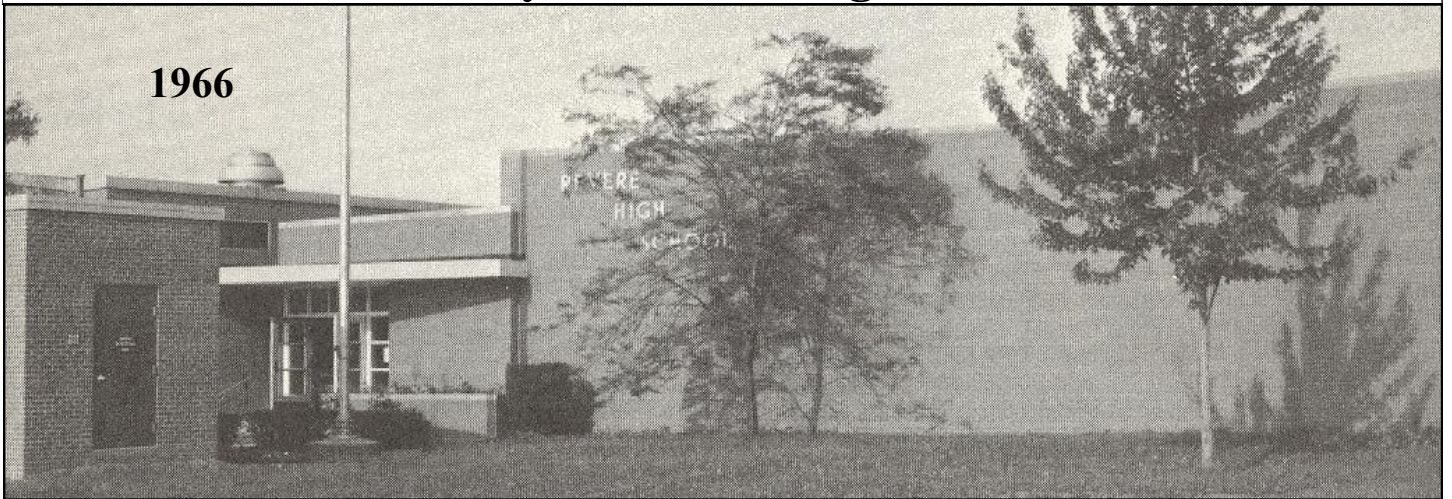
1958



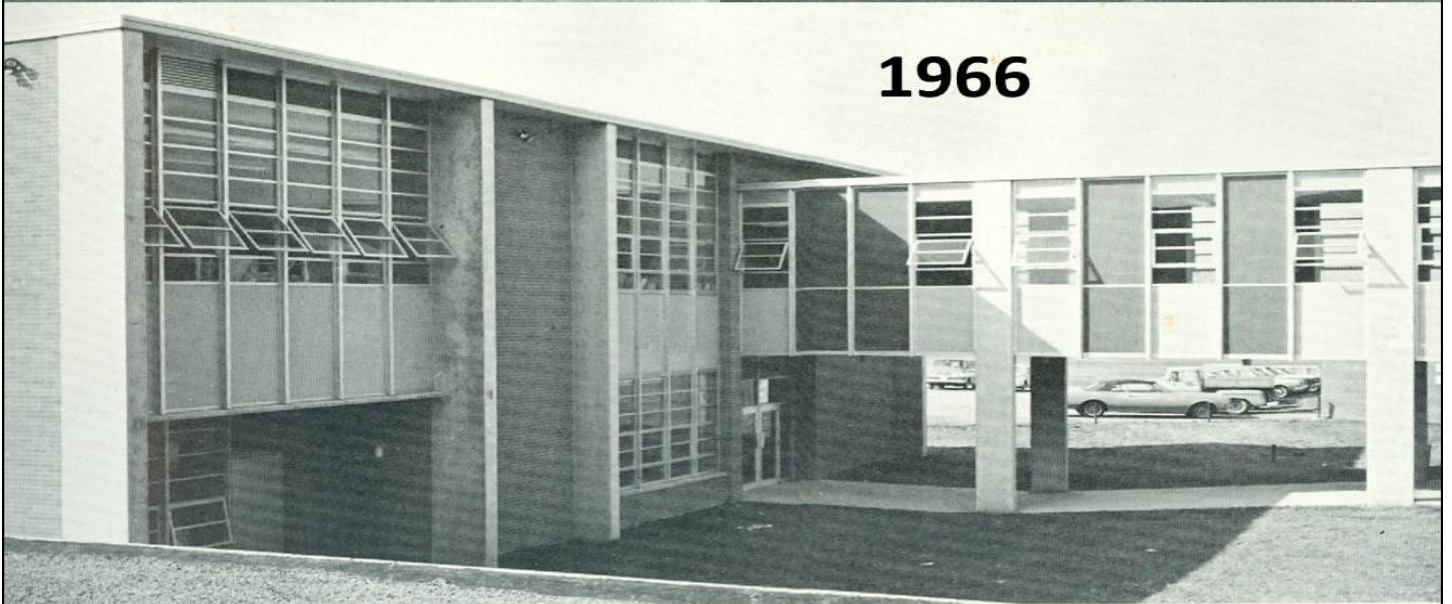
1964

# History of Revere High School

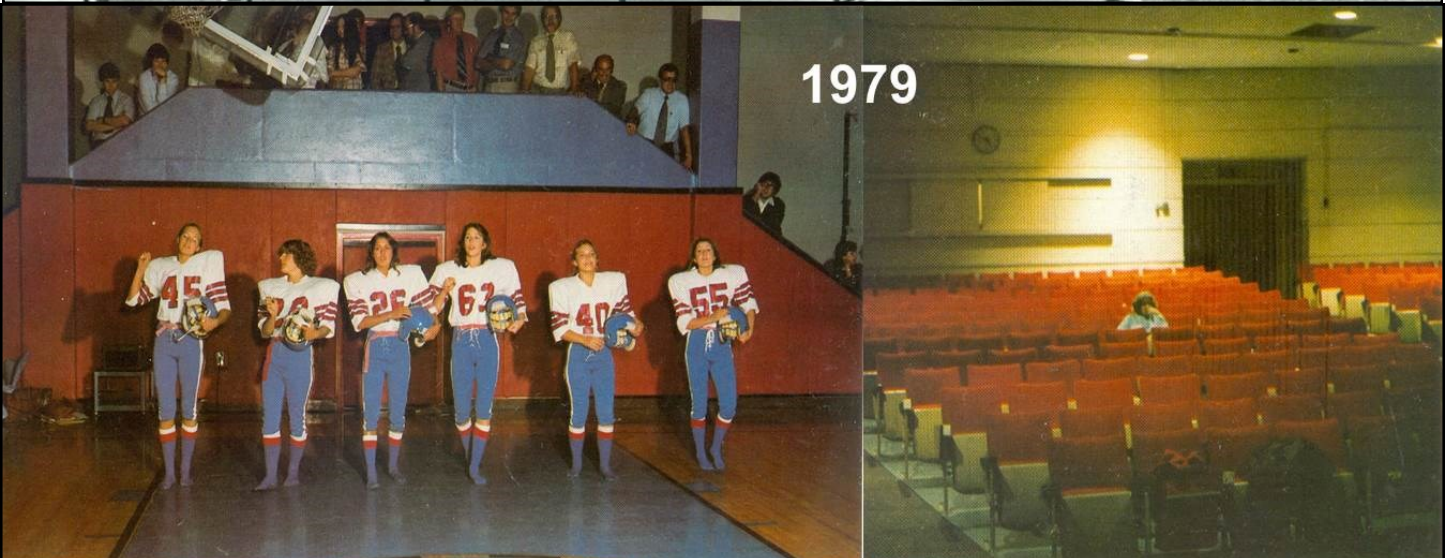
1966



1966



# History of Revere High School

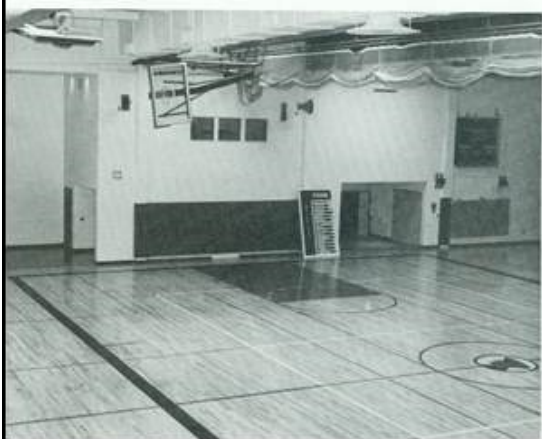


# History of Revere High School

1982



Above: The newly equipped science rooms provided an excellent environment for learning (or blowing it off). Top left: These steps connected the old lower south entrance to the new. Left: The Multi-Purpose Room, with its royal blue floor, overlooked . . . Bottom left: the gym, with its new entrance. Below: But some parts of the school have remained unchanged.



# History of Revere High School



# History of Revere High School

1995



## History of Revere High School—New Building

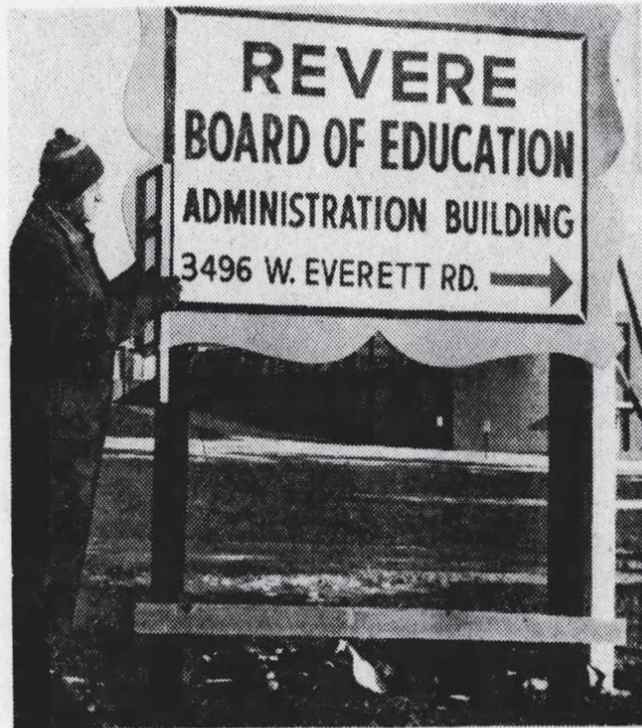
On November 8, 2016 voters approved [Issue 45](#) which provided funding to build a new high school, elementary school, and renovating-improving Hillcrest and the



# History of Revere Administration Building

## Well-Identified

A new identification sign points to the Revere Schools' Administration Building. The plywood sign in orange, black and white replaces one demolished by a car that ran off



**MERLE HUGHEY INSPECTS REVERE SIGN**  
... new at ad building

Everett rd. The sign points down the lane to the office building located in a wooded area. The replacement came in time for teacher recruiting. Now candidates can find the place to hunt a job.

*The Akron Beacon Journal—8/30/62*

**BATH-RICHFIELD** Board of Education filed a similar appropriation notice in its effort to acquire a 12.7-acre tract for extension of the campus area of Revere High School.

The land lies west of the school and is owned by the estate of Florence M. Gustaeval, whose attorney, Paul C. Laybourne, opposes the sale, it was announced.

Smith said the estate contends another proposed purchaser offers \$25,000. The Board offered to pay \$20,500, top of two appraisals it obtained.

The official notice says the land is needed for athletic fields and other school purposes. It lies along the south side of Everett rd., and west of Revere rd.

## REVERE LOCAL SCHOOLS ADMINISTRATION BUILDING

### BOARD MEMBERS

GLENN L. KEIPER	PRESIDENT
JOAN A. DEVENDORF	VICE PRESIDENT
JAMES F. GROW, JR.	
JAMES R. KROSKY	
RICHARD V. MOORE	1979
FLOYD L. RAMP	
ELEANOR C. VIALI	1979
J. DAVID KLINGENSMITH	SUPERINTENDENT

KARLAN · CURTIS · AMBUSKE  
ARCHITECTS · PLANNERS · INC.

1983



# **History of Revere Administration Building**

## Revere Transportation

School transportation has existed in Bath and Richfield since the 1880's. In its earliest forms it would have been wagons pulled by horses nicknamed "Kid Wagons" picking up the students for school. Many times the wagons would have been donated by local farm families—The Luther family donated and adapted one of the early Richfield kid wagons. In the 1920's schools becoming centralized, roads improved, and automobiles became more prevalent—the school bus began use.

After the merger of Bath-Richfield, their school bus fleets merged too. Some of the most active time was while the new school was being built because the students spent half a day at Bath School and half a day at Richfield School (9th and 10th at Richfield in the morning and Bath in afternoon) and it was the bus fleet doing most of the transporting.

In 1959 a bond was passed to allow for the construction of a \$50,000 bus garage. Spring Valley Road by the middle school was selected for the site out of five potential locations. Tuchman and Canute architects designed and McGinty Building Company built it with pole building construction. It had sixteen stalls for buses, an office, and several maintenance stalls. Four additional stalls were added on the north side later. In ??, the bus stalls were torn down leaving only the office and maintenance stalls.

# Revere Transportation

## Bath Schools Transportation

Date Unavailable

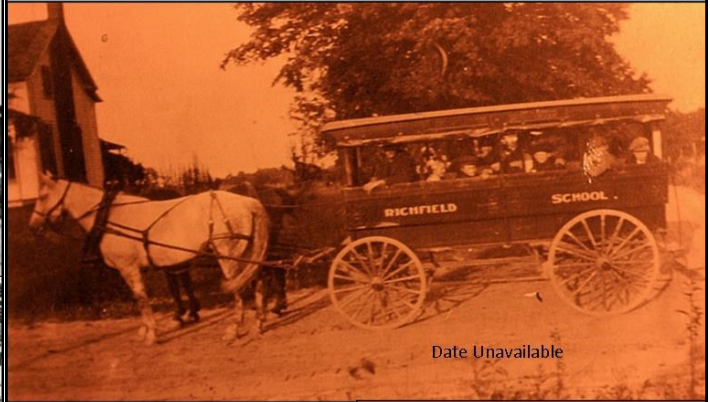


Date Unavailable



1929

## Richfield Schools Transportation



Date Unavailable



1920



Date Unavailable



2010



1961



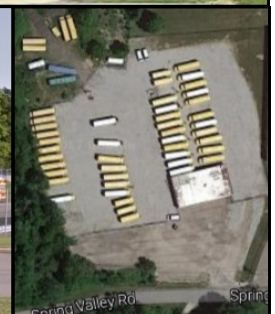
1998



1967



2005



Spring Valley Rd

Spring

# Revere Transportation

Lantern—10/23/1959

## Voters Face Bond Issue For Completion of School

If the \$180,000 bond issue passes on November 3, the Bath-Richfield Board of Education 17 classroom junior high school now being built, construct a \$50,000 bus garage, and put a wooden gym floor in the junior high gym.

If the issue is defeated, the Board will have to "skimp" through with only 13 completed and furnished classrooms. Last year's \$750,000 bond issue provided for 17 completely finished classrooms, but the plumbing and heating bids were higher than anticipated, so only 13 can be completed and four will be "Skeleton" rooms, according to Mr. Harold Schweisberger, superintendent.

Board members know that they will need more than 13 classrooms because the students are already enrolled in Bath, Richfield, and Hillcrest Schools.

Thus, if this bond issue can be passed, there will be enough money to complete the four skeleton rooms and furnish the entire building. The Bath-Richfield system will then be able to accommodate all students for the time being.

Upon the passing of the issue, a bus garage will be built in the immediate area of the high school and the junior high gym will have a wooden game floor instead of an incomplete cement one.

commodate all students for the time being.

Upon the passing of the issue, a bus garage will be built in the immediate area of the high school and the junior high gym will have a wooden game floor instead of an incomplete cement one.

## Work Progressing On Junior High

According to Tuckman-Canute, architects for the new junior building is keeping up to their time schedule. Several of the walls are up to roof height.

The roof, built of pre-cast concrete, is expected to be put on during the month of November. Electricians and plumbers are also on the job.

Various repairs were made on the old buildings during this past summer. At Revere, the gym floor was re-finished. In the chemistry and physics lab, new pipes have been installed because of a break in the water lines last year. Lines for piping in natural gas have also been installed.

The driveway at Hillcrest, which had been breaking apart, has been repaired.

In both the Bath and Richfield elementary buildings, the upper floors have been painted. New incinerators have been installed at the Richfield school building.

## These Gal Drivers A Necessity!

By BETTIE LEICHT

BATH-RICHFIELD—Women drivers are no laughing matter in the Bath-Richfield School District.

Supt. Harold Schweisberger is glad and proud to have them.

Because it became increasingly difficult to keep enough men drivers to operate the school district's fleet of buses, Schweisberger and the Board of Education turned to hiring women drivers this year.

THE THREE who now "man" buses say they love to drive, no matter what kind of a vehicle it may be.

Mrs. Steven Nagy, 5342 Black rd., Richfield Twp., admits it takes a little time to get used to the size of a school bus.

Mrs. Nagy is the mother of eight children, some of them attending Richfield Elementary School and some in Revere High.

MRS. HELEN Strand, 3046 Cleveland-Massillon rd., enjoys the bus driving job so much she gave up a job with William Taylor & Son Inc. in Cleveland.

Coming from 645 Rothrock rd., Copley, Mrs. Fred Phillips is a substitute. She drives only when someone is absent, but still she hasn't missed too many days this fall.



THE WOMEN drivers have the road in the Bath-Richfield School District. Because of a shortage in male bus drivers, the girls are beginning to take over.

Shown are Lady Drivers (left to right) Mrs. Steven Nagy, Mrs. Helen Strand and Mrs. Fred Phillips.

Akron Beacon Journal—4/20/1960

At Bath-Richfield

## Consider Hiring Women To Drive School Busses

BATH-RICHFIELD—Faced with increasing difficulties in finding bus drivers for the growing Bath-Richfield School fleet, Executive Head Harold Schweisberger is thinking of turning to women as possible drivers.

He realizes that few women have had the occasion to drive a vehicle as large as a 60-passenger school bus. Consequently, to give possible applicants a chance to get the "feel" of driving a bus, he will be willing this Summer to let interested women take a few trial spins with one of the busses.

THOSE who decide they are seriously interested in the

work will then have to undergo a formal driving test and the County Health Department physical examination.

Several public and parochial schools in Summit County have utilized women bus drivers. Northfield-Macedonia

Akron Beacon Journal—4/29/1960

## Bus Garage Contract Let

BATH-RICHFIELD—McGinty Building Co. of Cleveland has been awarded the \$54,798 contract to build a bus garage for Bath-Richfield School District.

The garage will have a maintenance section for three busses and storage for 16 on a site west of the new Eastview Junior High School. The McGinty cost estimate was recommended by the Board of Education's building and grounds committee after reviewed bids.

Akron Beacon Journal—1/28/1960

At Bath-Richfield

## Spring Valley Rd. Is Bus Garage Site

BATH-RICHFIELD—Spring Valley rd. just west of the new Eastview Junior High School will be the site of the new Bath-Richfield School District bus garage. The Board of Education Wednesday night accepted this as the best location after being presented with five possible sites by Joseph Tuchman of Tuchman and Canute, Akron architects, at a special meeting. Tuchman was hired earlier in the year to draw up plans for the building.

He said the rest of the plans and regulations set up by the state building codes would be available and ready for bids by the next board meeting Feb. 11.

TED STEINER of the Umbaugh Pole Building Co. of Tallmadge presented his ideas of how the garage could be built by the pole building construction at considerable savings.

The board also voted to take advantage of the National Defense Education Act. An unencumbered balance was left in this fund when some schools failed to take advantage of it before the Dec. 31, 1959, deadline.

It was opened again during the month of January for schools wishing to make further use of it. Bath-Richfield will apply for additional science material to use in the new Junior High School.

# Revere Transportation

Akron Beacon Journal—5/23/1972

## Driving Experience

Mrs. James W. Smith, Revere Schools' bus driver who won a regional driving contest, is back from the statewide contest at Gahanna. She didn't win, but the guy who did has won twice before.

Mrs. Smith, the former Lenore Hartman, started driving a tractor on her family's farm in Richfield when she was 10 years old. She got her driver's license at 16.

Six years ago, friends who drove school buses suggested Mrs. Smith might like the same kind of a job. She applied and passed the requirements. She won the regional bus driving finals at Springfield High by scoring 487 points out of a possible 495. Competition involved loading and unloading students, parallel parking, backward and forward driving, a written test and bus inspection.

Mrs. Smith is one of Revere's 25 drivers. She and her husband, a Richfield zoning inspector, have three children and live at 5012 W. Streetsboro rd., Richfield.



Mrs. Smith

## Revere to hold off on bus garage plan

Akron Beacon Journal—5/25/2014

School board agrees Brecksville Road site would cost too much

By Jody Miller

Special to the Beacon Journal

**BATH TWP.:** The Revere school board has opted to not move forward with the purchase of property for a new bus garage.

The board in January voted to pay \$570,500 for the purchase of 7 acres of land at 2636 Brecksville Road — the site of the former Bencin Trucking Co.

Following a brief executive session this week, the board voted unanimously not to proceed with the purchase.

School board member George Seifert said continuing with the purchase would not be in the district's best interests.

"We were presented with unreasonable and unrealistic expectations from the Richfield [Village] Planning and Zoning Commission for the project that would require spending an exorbitant amount of taxpayer dollars," Seifert said.

"The additional money that would be required to continue on this project could be better used to continue upgrading [Revere's] infrastructure and education to ensure the success of our students."

Revere officials said building and site plan requirements for a new facility on that parcel would have added substantially to the cost the district had planned to spend.

The property was attractive to the district because it is located in a commercial area in Richfield Village and would have been easily accessible to the communities served by the schools.

The district will continue its search for a site for a new bus garage, said district officials.

The current facility is located on Spring Valley Road and in such close proximity to Revere Middle School that exhaust fumes from the buses reach the school building. There are also security concerns at the current facility, which while fenced, requires parking many of the district's fleet of buses outside.

Akron Beacon Journal—7/15/2005

## Revere students to appear in court

**BATH TWP.:** The two Revere High School students who allegedly slashed more than 100 school bus tires in January are scheduled to appear in Summit County Juvenile Court on Aug. 5.

, who were both 16 when arrested this spring, were charged with vandalism.

Each teen also will appear in the court Aug. 5 on a charge of breaking and entering.

In May, a Bath patrolman spotted two teens trying to pry open a rear door at Corkscrew Johnny's, 2425 N. Cleveland-Massillon Road.

The teens ran when they spotted the patrolman but left a vehicle behind.

The vehicle led investigators to the teens, who admitted vandalizing 114 school bus tires at the Revere bus garage while off on a snow day Jan. 5.

As a result, school was closed the next day. Replacing the tires cost about \$15,000.

# **History of Revere Athletics**

## **Revere Sports**

Prior to there being a Revere, there was Bath Buccaneers and the Richfield Rockets. The two different districts had a number of sports and actually competed against each other in the Summit County League.

In 1950 in anticipation of the consolidation of the two schools, the two districts decided to combine football called Bath-Richfield football team that first year and Revere there after. However, in basketball the Richfield student body voted to delay the combining of the basketball teams until 1951. And in 1952, permanent sports department was established with Kermit Smulbach serving as the athletic director and the team known as the Revere Minutemen. The school sponsored football, cheerleading, men's basketball, men's track, and baseball. Football, track, and baseball competition were held at Bath Field while basketball was held at Richfield Gymnasium.

Girls at Revere, with the exception of cheerleading, did not have organized sports sponsored by the Athletic Department. But Bath and Richfield girls combined to become Revere's Y-Teens. Y-Teens (formerly Girl Reserves) is a club that is affiliated with the Youth Women's Christian Association (YMCA). There was 29 local high schools that had Y-Teen clubs. Revere girls first competed in swimming and basketball in 1952 and other sports were added through the years.

In 1972-1973, girl's sports were added to Suburban League competition.

## **Revere Groups/Clubs**

- On March 28, 1952, Booster Club reorganized under the name Revere—Carl Deitrich served as the first president.
- Varsity R Club was formed in 1954 (called the Lettermen's Club). It was organized by Coach Frank DiNapoli and was open to all those who have received a letter for football, basketball, baseball, track, and managing any of the sports—Bob Wells served as the as the first Student-President of the organization.

## **Ohio High School Athletic Association**

The Ohio High School Athletic Association is a voluntary, unincorporated, not-for-profit association of public and private high schools. The impetus for the founding of the Ohio High School Athletic Association came from the Western Ohio Superintendents Round Table as a result of discussions in the 1890's and early 1900's. At the March, 1906, meeting of the Round Table, a resolution was adopted to appoint a committee headed by George R. Eastman of Steele High School in Dayton. The OHSAA started with five districts in 1907, but soon changed to six districts in 1908. The OHSAA sponsors state championships in 11 boys sports and 11 girls sports as a result of that humble beginning of one in 1908.

# History of Revere Athletics

## **Fall** (year it became a sport at Revere and year it became a OHSAA recognized sport)

- **Football—1950 (OHSAA—1972)**
- **Men's Soccer—1978 (OHSAA—1976)**
- **Women's Soccer—1986 (OHSAA—1985)**
- **Men's Golf—1960 (OHSAA—1927)**
- **Women's Golf—2000 (OHSAA—1993)**
  - Individual women occasionally played on men's team prior to formation of a women's team—first being in 1990
- **Volleyball—1972 (OHSAA—1975)**
  - Women played against each other in "Y-Teens League" hosted at the YWCA starting in 1958
- **Women's Tennis—1979 (OHSAA—1977[Individual/Doubles only, no Team championships])**
  - Individual women occasionally played on men's team prior to formation of a women's team—first instance being in 1974.
- **Men's Cross Country—1967 (OHSAA—1928)**
- **Women's Cross Country—1981 (OHSAA—1978)**
  - Individual women have participated on men's team prior to formation of a women's team—first being in 1979

## **Winter** (year it became a sport at Revere and year it became a OHSAA recognized sport)

- **Boy's Basketball—1952 (OHSAA—1928)**
- **Girl's Basketball—1972 (OHSAA—1976)**
  - Women played against each other in "Y-Teens League" hosted at the YWCA starting in 1952
- **Wrestling—1957 (OHSAA—1938)**
  - No team in 1958 and 1959
  - No team in 1963 to 1968
- **Gymnastics—1972 (OHSAA—1977)**
  - There was a girl's team formed in 1972 but there is currently no team, occasionally some girls will compete individually and represent Revere (the latest in 2001).
  - In 1990, Mark Webber competed in gymnastics as a representative of Revere.
- **Men's Swimming—1997 (OHSAA—1928)**
- **Women's Swimming—1997 (OHSAA—1977)**
  - A team existed for several years participating in the "Y-Teens League" host by the YWCA starting in 1952 but only last a few years.

## **Spring** (year it became a sport at Revere and year it became a OHSAA recognized sport)

- **Baseball—1952 (OHSAA—1928)**
  - No team in 1955 and 1956
- **Softball—1973 (OHSAA—1978)**
  - Softball transitioned from slow-pitch to fast-pitch
- **Men's Track—1952 (OHSAA—1908)**
- **Women's Track—1977 (OHSAA—1978)**
- **Men's Tennis—1969 (OHSAA—1922 [Individual/Doubles only, no Team championships])**
- **Men's Lacrosse—2011 (OHSAA—2017)**
  - Established as an independent club team in 1994, became a school recognized club sport in 2004, and will become a school sponsored sport in 2011.
- **Women's Lacrosse—2011 (OHSAA—2017)**
  - Established as an independent club team in 1996, became a school recognized club sport in 2004, and will become a school sponsored sport in 2011.

# History of Revere Athletics

## Revere Facilities

### Football/Track/Soccer

- Originally the Minutemen football team and track team held their competitions at Bath School on Bath Field. In the fall of 1955, construction on a new field. The field was located at Revere High School, at the corner of Everett and Revere Roads, and include a new lighted field and track.
- On October 31, 1958, Revere High School Football Field was officially dedicated.
- On September 8, 1962 a dedication ceremony was held to commemorate the completion of a number of projects to the field, including new 1,200 seat steel bleachers.
- In 1994 the stadium received a major facelift with addition of new visitor bleachers, an all-weather track, new permanent fencing around the field and stadium, and paving around the stadium to replace the gravel.
- In 2002, new home bleachers were added along with an impressive press box.
- In 2002, the stadium was rededicated and named after longtime football coach, Joseph F. Pappano.
- In 2009, the stadium received field turf, an expanded playing surface, new visitor bleachers, a new all-weather track, new fencing, and new paving around the stadium.

### Basketball/Wrestling/Volleyball

- The home for winter sports was the Richfield Gymnasium.
- In 1953, a gymnasium was added at the 1-year old Revere high school.
- In 1972, a new gymnasium was added (old gym converted to a library).
- In 1981, a major addition (Gordon E. Knapp Addition) was added to RHS. The addition included: locker rooms and a multipurpose room (wrestling and gymnastics room).
- In 1995, an Auxiliary Gym was added by converting the library back into a gymnasium.
- In 2015, the multipurpose room was converted to a full-time weight room and wrestling was moved to the Auxiliary Gym

### Baseball/Softball

- The home of the baseball team was originally Bath Field (Richfield Field was “too tough because it was scraped too much”).
- In 1961 a new baseball field was built at the current high school (where the current softball field is located). In 1968, spectator stands were built.
- In 1972 a new baseball field was built at its current location, next to the bus garage and the old baseball field was converted to a softball field.
- The baseball and softball fields underwent major facelifts in 2004 when both fields became baseball/softball fields only: permanent 10 foot fencing was put in around the field; storage, bleachers, and a batting cage were also added.

## Revere Athletic Hall of Fame

The Revere High School Athletic Hall of Fame was created in 2014 under the leadership of Phil Heyn (RHS teacher, coach, and alumnus) and several administrators (Bill Conley, Phil King, Bill Adams, and Bill Schumacher) to honor Revere High School graduates, as well as coaches and special contributors, who have distinguished themselves athletically at Revere and beyond. Nominations are submitted to the Athletic HOF Selection Committee through the end of April for consideration of induction in the fall (at the first home football game).

INDUCTEE	CLASS	SPORT(S)	INDUCTION
<a href="#">1990 Football Team</a>		Football	2014
<a href="#">Samantha Danesis</a>	2006	Tennis	2014
<a href="#">Melissa Bickett</a>	2000	Track, Soccer, Football, Swimming	2014
<a href="#">Kory (Fielitz) Rorabaugh</a>	1990	Basketball, Track & Field, Volleyball	2014
<a href="#">Jim Scavuzzo</a>	1990	Wrestling	2014
<a href="#">Andy McCollum</a>	1988	Football, Wrestling	2014
<a href="#">Charles T. Penzenik</a>	1968	Football, Track & Field	2014
<a href="#">Dr. William E. Moats</a>	1954	Baseball, Football, Basketball, Track—Contributor	2014
<a href="#">Coach Al Smesko</a>	1969-1983	Basketball, Football—Contributor	2014
<a href="#">Coach Joseph F. Pappano</a>	1977-2002	Football	2014
<a href="#">Stephanie Danesis</a>	2008	Tennis	2015
<a href="#">Mike McCall</a>	2006	Track & Field	2015
<a href="#">Kristin (Anderson) Swisher</a>	2001	Track & Field	2015
<a href="#">Mike Stoerker</a>	2001	Soccer	2015
<a href="#">Siri Terjesen</a>	1993	Track, Cross Country, Marathoner	2015
<a href="#">Charles W. Penzenik</a>	1992	Football, Track & Field	2015
<a href="#">Chris Dauk</a>	1991	Golf	2015
<a href="#">Keith Weaver</a>	1991	Football, Wrestling, Track & Field	2015
<a href="#">Heidi Marshall</a>	1990	Volleyball, Basketball, Softball	2015
<a href="#">Al Kerkian</a>	1963	Football	2015
<a href="#">1997 Girl's Tennis Team</a>		Tennis	2016
<a href="#">Alfred "Fred" J. Magoline, Jr. MD</a>		Contributor	2016
<a href="#">Joe Corfman</a>	2008	Baseball	2016
<a href="#">Casey Nance</a>	2008	Basketball	2016
<a href="#">Kathryn (Orr) Carter, MD</a>	1997	Cross Country, Track & Field	2016
<a href="#">Molly McCann Dzikowski</a>	1991	Volleyball, Basketball, Softball	2016
<a href="#">Kelly (Cook) Collins</a>	1988	Soccer, Basketball	2016
<a href="#">Mark Wracher</a>	1982	Football	2016
<a href="#">Mike Jones</a>	1968	Basketball, Football, Golf, Baseball, Track & Field	2016
<a href="#">John Preston Stewart</a>	1963	Football, Wrestling, Track & Field	2016
<a href="#">Coach Jeff Gibson</a>	1973-2007	Baseball, Cross Country	2016

# Revere Vs. Copley Rivalry: Football History

## HISTORY OF THE RIVALRY

Revere and Copley have one of the more storied rivalries in Northeast Ohio. These two neighboring school districts border one another and share the economic district known as Montrose. This rivalry carries a lot of great tradition and promotes a lot of fun between two of Ohio's finest high schools. Although heated in all sports, the Revere-Copley rivalry takes its most prominent form on the gridiron. Copley currently leads the series 33-32 and has a 11-5 advantage in the last 16 years. But Revere has a 24-16 advantage over Copley in the last 39 years. And these two teams have combined to win 40% of the Suburban League Titles (RHS-12; CHS-15) as well as a combined 19 state playoff appearances (RHS-8; CHS-11).

The rivalry actually began prior to the formation of Revere, back when the Bath Buccaneers played against the Copley Indians in the Old Summit County League. Just before the consolidation in 1950, the two teams did not play because of the enrollment difference—from the *Akron Beacon Journal*: “Copley and Bath were arch rivals for many years but their series lapsed when Copley’s school enrollment considerably outgrew that of Bath. With the consolidation of Bath and Richfield, the boys at the Northwestern corner of the county are back at it again.” As the October 1955 edition of the *Revere Lantern* referred to it, the meeting of these two teams on the football field is a “Classic Old Rival Gridiron Contest.”

In 1968 a traveling trophy tradition was added to this backyard brawl when the student councils of Revere and Copley jointly purchased a bell for \$42.50. The bell was named the “Victory Bell” with the winning team claiming the rights to the bell for that year. Revere won the bell in the first year, beating Copley 33-20 on October 11, 1968. The bell used today is not the original bell or stand. In the early 1980’s Copley students stole the bell from Revere and vandalized it, as a result—Copley was forced to purchase a replacement bell. The original stand was also replaced in 2001 after Copley painted and carved in the original when they held it in 1999 and 2000. In 2007, Revere students attempted to steal the bell from Copley High School but the attempt was thwarted—no damage was done to the bell.

The game took on a new tone in 1977 when Joe Pappano took over as the Head Coach at Revere. Pappano, a Copley resident, embraced this game and made sure his players understood the importance of this rivalry and worked especially hard during “Copley Week”—including turning on the stadium lights to practice after the sun had already set. Pappano also started the tradition of the “Beat Copley” T-shirts that were awarded to the football team if they defeated Copley.

Then this rivalry had the “Twelve Year War”! This marks a 12-year period (1990-2002) where Joe Pappano faced off against Dan Boarman. Both coaches were former players, coaches, and friends at St. Vincent-St. Mary. During this time, Revere held the advantage 9 wins to Copley’s 4 wins.

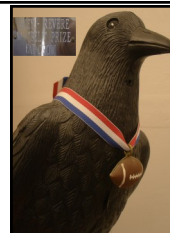


### Revere—Copley “Victory Bell”

In 1968—the student councils of Revere and Copley jointly purchased a \$42.50 bell, which they named the “Victory Bell”, with the winning team claiming the rights to the bell for that year.

### “The Crow”

The tradition was started in 1994 between Copley Athletic Director Larry Banner and Revere Alumnus Tim Godard ('70). It is to be placed in the football locker room or Athletic Office of the team that lost the Revere-Copley Foot-



### “The NO BELL Prize”

Jim Csikos (CHS graduate) from Jim’s Locksmith and Tim Godard (RHS Class of 1970) from Godard Auto Sales. Every year the ball it is handed to the loser of the game, and then prominently displayed in the losers place of business for the next year.



# Revere Vs. Copley Rivalry: Basketball History

The rivalry between Revere and Copley may have started on the gridiron but it quickly spilled over to the basketball court after Bath and Richfield's consolidation in 1952. Copley currently leads the all-time series 90 to 50 in regular season contests (there have been a number of post season contests between the two schools). Even though the series may look lopsided, the games have been extremely competitive: Copley holds slight overall point advantage (7,148-7,023) and the average margin is in Copley's favor by only 1 point.

Then this rivalry had the "Fifteen Year War"! This marks a 15-year period (1969-1983) where Al Smesko faced off against Bruce Falb. During this time, Copley held the advantage 16 wins to Revere's 14 wins. The present day traveling trophy (Gold Ball Trophy) was dedicated to both coaches in 2013.

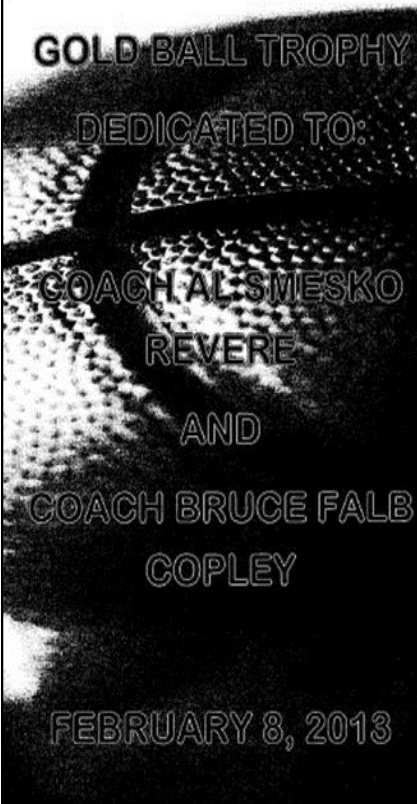
## It's Copley vs. Revere, but also Falb vs. Smesko

*The Akron Beacon Journal—1/9/1979*


### Gold Ball Trophy

The Golden Ball Trophy, a traveling trophy tradition, was begun in 2003 by the two school's basketball coaches (RHS—Dean Rahas and Copley—Dana Addis) with the winner of the second regular season game claiming the rights to the trophy for that year. The Gold Ball Series is lead by Copley 5 to 9.

On, February 8, 2013, the Gold Ball Trophy was dedicated in honor of [Coach Al Smesko](#) (Revere) and [Coach Bruce Falb](#) (Copley) for their contributions to their schools and to this rivalry.



**GOLD BALL TROPHY**  
**DEDICATED TO:**  
**COACH AL SMESKO**  
**REVERE**  
**AND**  
**COACH BRUCE FALB**  
**COPLEY**  
**FEBRUARY 8, 2013**



**COACH AL SMESKO**


Al Smesko coached boys' basketball at Revere High School from 1959 until 1993. His teams won 171 games, including one sectional championship and two Suburban League Championships.

During his coaching career, Revere played Copley High School 28 times in which they split the games played at 14 each.

Prior to becoming the varsity coach, Al coached basketball 16 years for 7<sup>th</sup> grade through JV. He was also assistant track coach for 2 years and assistant football coach for 6 years. Al has been a track official for 30 years.

Al was president of the Greater Akron Basketball Coaches Association in 1982 and was inducted into the Greater Akron Basketball Coaches Hall of Fame in 1992. He was inducted into the Revere High School Hall of Fame in 1994.

Al currently is a mainstay at many of our sporting events. He operates the scoreboards for football, boys and girls soccer, boys and girls basketball and boys and girls lacrosse.





**COACH BRUCE FALB**

Bruce Falb graduated from Copley High School in 1945, earning 3 varsity letters in both football and basketball. After serving in the Navy, and then earning 2 football letters while attending BGSU, he graduated and returned to his Alma Mater as a teacher and coach. He served as the head boys' basketball coach at Copley High School for 31 years from 1956 to 1987.

His teams won 371 games, including 3 undefeated, regular seasons, and 12 Suburban League Championships, highlighted by 6 in a row (1978-79 through 1983-84).

He concluded his 39 years of service at Copley High School serving as the Athletic Director until his retirement in 1991. He was elected into the Greater Akron Basketball Hall of Fame in 1981, and the Copley High School Hall of Fame in 2008, the inaugural CHS Hall of Fame Class.

Bruce passed away in August of 2003.



## Revere Athletic Facilities: [Joseph F. Pappano Stadium](#)

Originally the Minutemen played their home games at Bath Field located next to Bath School at the corner of Cleveland-Massillon and Bath Roads. In the fall of 1955, construction on a new field began. The field was located at Revere High School, at the corner of Everett and Revere Roads, and included a new lighted field and track. The field was financed through the Revere Booster Club (and that debt later paid off by Ira Road resident, Raymond C. Firestone). On September 20, 1957, the first game was played on the field—a 6-0 win over Copley. On October 31, 1958, Revere High School Football Field was officially dedicated. On September 8, 1962 a dedication ceremony was held to commemorate the completion of a number of projects to the field, including new 1,200 seat steel bleachers. In 1994 the stadium received a major facelift with addition of new visitor bleachers, an all-weather track, new permanent fencing around the field and stadium, and paving around the stadium to replace the gravel. In 2002, new home bleachers were added along with an impressive press box.

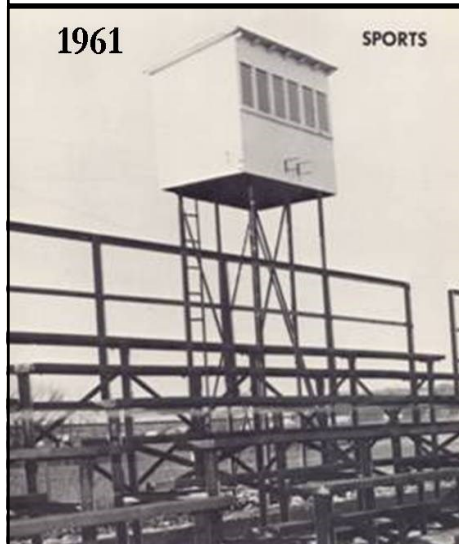
In 2003, the stadium was rededicated and named after [Coach Joseph F. Pappano](#). The honor was bestowed upon Coach Pappano who coached for 26 years (1977-2002) and became one of the area's best coaches. He finished his career with 160 wins, 9 league titles, 7 state qualifying teams, a 20-6 record against Copley, Ohio High School Coach of the Year in Division II in 1980 and '89 and in Division III in '90, and was inducted into the Summit County Sports Hall of Fame in 2004.

In 2009, field turf was installed in the stadium thanks to the efforts of a community organization (Revere Turf Committee) along with the Revere Administration and the Revere Board of Education. The Stadium also received an expanded playing surface, new fencing, a new all-weather track, new paving around the stadium, and play clocks on both sides of the field.



# Revere Athletic Facilities: Joseph F. Pappano Stadium

1961



1966



1977



1981



1981



2008

## Revere Athletic Facilities: [InfoCision Field](#)

In 2008 with the Revere Board of Education (BOE) identifying the need to replace the deteriorating track at Joseph F. Pappano Stadium, a group of Revere parents proposed raising funds to replace the natural grass field with an artificial surface. This group of parents then formed the Revere Turf Initiative which sought to fundraise in order to make this vision a reality.

The project cost is estimated at \$1,380,000. The Revere School District provided the initial \$500,000 it had reserved for the required track replacement and any remaining cost of the total project (the reduced annual maintenance cost of the new turf as compared to natural grass will also financially benefit the school district. The Turf Initiative's goal is to privately fund \$650,000 towards the project. The initial push has been a tremendous success—As of August 15, 2009, approximately \$500,000 has been pledged by 185 different local families, businesses, and organizations!



2009



## Revere Athletic Facilities: [William E. Moats Field House](#)

When a bond issue that included the field house was defeated in November 1978, the Revere Booster Club decided to build it themselves. Under the leadership and work of club president Dr. William Moats, they worked to raise over \$250,000. A majority of this was done through five major donations of \$25,000 (Mr. Russell Dancey, Mr. and Mrs. Robert Hissong, Mr. Stanley Lojeck, and two anonymous donors). The booster club then appealed to the community for smaller donations—170 different local families, businesses, and organizations contributed to the project! As the results were promising; [Dr. Moats](#), Reno Alessio, [Dr. Alfred Magoline](#), Dr. John Weingart, and Dr. Thomas Kelly went to the bank and signed a note for the remaining amount needed with an interest rate at about seven percent. With Reno Alessio donating his time as the construction manager and the actual construction was done at a charitable cost by the Earnest Alessio Construction Company, the project was ready to begin.

On May 30, 1979 a groundbreaking ceremony was held for the new Revere Field House, work was complete on it by the Fall, and it was officially dedicated on October, 18, 1979. The new field house provided onsite locker rooms, heated concession stand, and permanent restrooms to the stadium.

With the state-of-the-art field house complete and being occupied, a financial crisis occurred for those that had signed for the bank loan. In the early 80s, the interest rates skyrocketed to 20 percent and the interest accumulated on the loan far beyond what the committee could raise. In order to repay the loan, the Revere Booster Club held their first Reverse Raffle, with a car donated by Bigelow Chevrolet as the grand prize.

In 1995, the field house received an addition—including a new football/baseball locker room, a new concession stand, expanded weight room, and a new trainers room.

In 2000, the field house was rededicated and named after [Dr. William E. Moats](#). The honor was bestowed upon Dr. Moats after his longtime presence in the district—former standout athlete (football, basketball, baseball, and track), former Revere Booster Club President, and longtime team physician.

As an athlete, the 5'10 and 145 pound Bill “Willy” Moats earned one letter in track, three letters in football and baseball, and four letters in basketball before graduating in 1954. He attended Wooster College where he was a four year letterwinner (1955-1958) as a member of the baseball team. Dr. Moats served as a team physician from 1963 To 1999. In addition, he has been affiliated with Summa Health System since 1964. He has spoken and researched intensively on the topic of Sports Medicine. He also has served as the Medical Director of Akron City Hospital Sports Medicine, the Ohio Ballet, and for the Akron RoadRunner Marathon.

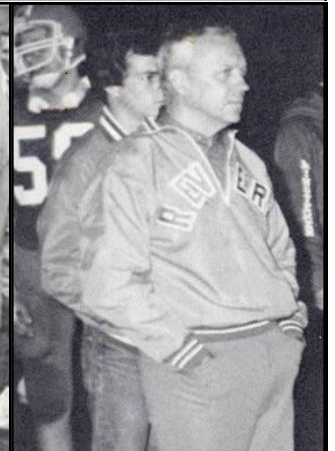
## William E. Moats FIELD HOUSE



Dr. Moats addresses community and student supporters just before groundbreaking ceremony.



First digs go to Board President Dr. Keiper, Mr. Lojeck, and Mr. Alessio.



Dr. Moats, serving as team physician, looks on during a game in 1983.

## Revere Athletic Facilities: Weight Room



The weight room was initially known as the “Multipurpose Room” and hosted numerous activities (wrestling, gymnastics, baseball, etc.). In 2000 the first weight room took shape with the Wrestling Program and a major donation by Jerry Kusar. In 2007-2008, the informal weight room was made into a formal training area. Thanks to donations by the Revere Booster Club and the Revere Athletic Department, new flooring was installed and new equipment was added. In 2015 thanks to the Revere Booster Club, the remainder of the room had new flooring installed and the walls were covered with Revere Pride posters.



## Revere Athletic Facilities: RHS Trophy Case Dedicated to Ed Luther



In 2008-2009, Revere added a trophy case outside of the gymnasium. The project was made possible through donations by the Ed Luther Family, Revere Booster Club, and Revere Athletic Department. It was dedicated to Ed Luther on January 16, 2009.

Ed Luther was an alumnus ('79) who loved Revere. It was his great-grandparents that founded Luther Farms and the Luther's have been a mainstay in Revere ever since. Ed's children are part of Revere School—Ed Luther Jr. (2008 Football 1st Team All-District Selection), Andy Luther (2009 All-League), Brian Luther (2013 RHS Graduate and member of the Football Team), and Cody (Class of 2020).



DEDICATED TO  
ED LUTHER  
FOR HIS MINUTEMEN PRIDE, LOVE OF ATHLETICS,  
AND SUPPORT OF REVERE LOCAL SCHOOLS.

THANK YOU  
ED LUTHER FAMILY  
REVERE ALL SPORTS BOOSTER CLUB  
REVERE LOCAL SCHOOL DISTRICT  
JANUARY 16, 2009

# Revere Athletic Facilities: Main Gymnasium & Auxiliary Gymnasium



## Gordon E. Knapp Memorial Addition

The RHS student council dedicated the new auditorium, main gym area, and multipurpose room (wrestling room) to Gordon E. Knapp in 1981. Knapp was a teacher, coach, and principal who taught in the district from 1941 to 1980. The day before Mr. Knapp officially retired, was involved in a fatal car crash on his way home.

- The Revere home for winter sports was originally the Richfield Gymnasium (the new high school did not originally have a gymnasium).
- In 1953, a gymnasium was added on the 1-year old Revere high school.
- In 1972, the new gymnasium was added but had to be made smaller than originally planned because of [budget cuts](#)—bids were higher than the bond. The old gym was converted into the library.
- 1981, a the Gordon E. Knapp addition was added. The addition added modifications to the gymnasium (built in 1972), locker rooms, multipurpose room (wrestling and gymnastics room).
- In 1995, with the addition of a new library, the Auxiliary Gym was added by converting the old library back to a gymnasium.
- In 2014-15 the auxiliary gym transforms into a Wrestling Room during the winter.



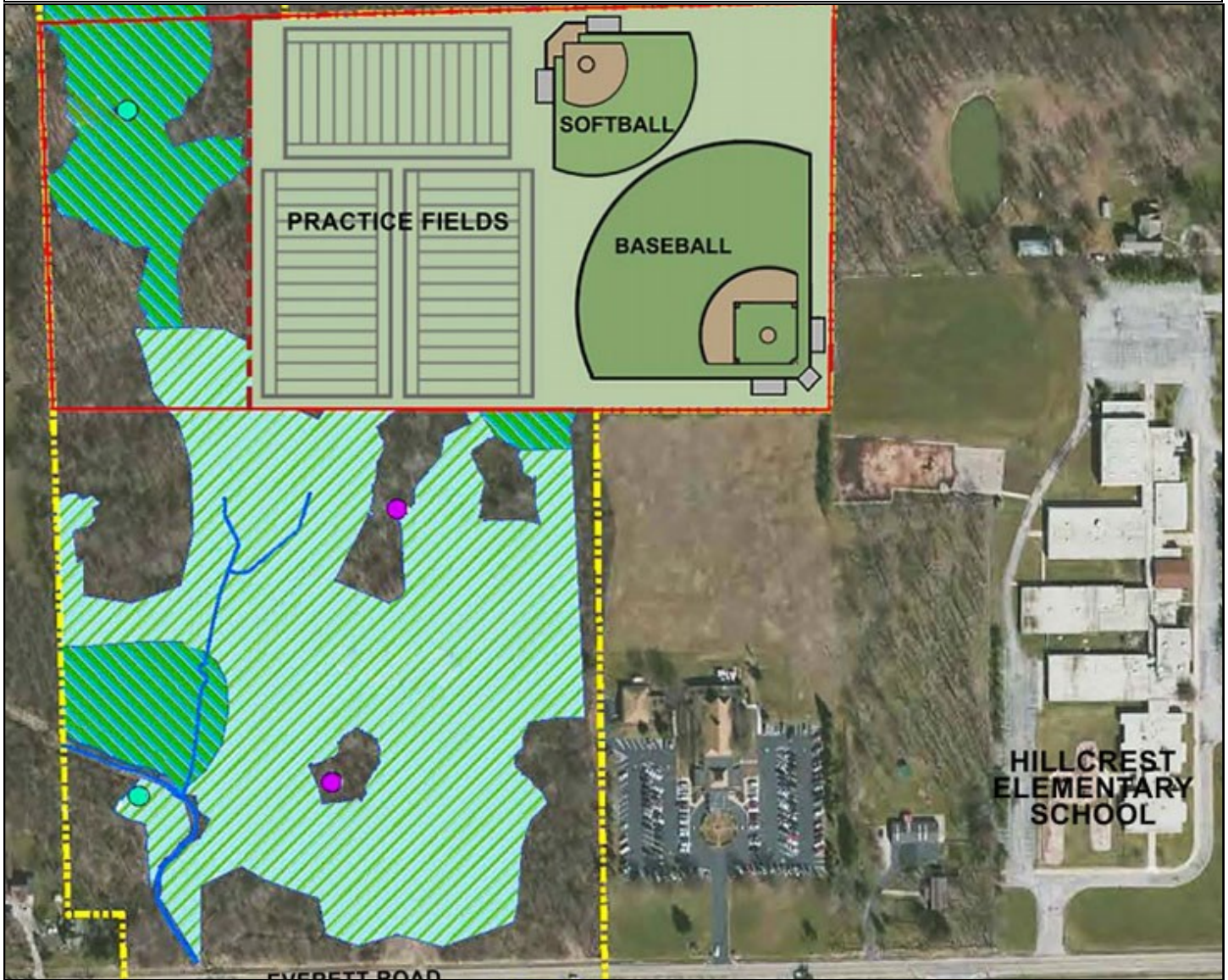
# Revere Athletic Facilities: Baseball & Softball

- **Baseball:** The home of the baseball team was originally Bath Field (Richfield Field was “too tough because it was scraped too much”). In 1961 a new baseball field was built at the current high school (where the current softball field is located). In 1968, spectator stands were built. In 1972 a new baseball field was built at its current location, next to the bus garage and the old baseball field was converted to a softball field. The outfields of both fields were the home for football and soccer practice in the fall. The baseball field under went major facelifts in 2004 when both fields became baseball/softball fields only: permanent 10 foot fencing was put in around the field; storage, bleachers, and a batting cage were also added.
- **Softball:** The baseball field became the softball field in 1972. The outfields of both fields were the home for football and soccer practice in the fall. The baseball and softball fields under went major facelifts in 2004 when both fields became baseball/softball fields only: permanent 10 foot fencing was put in around the field; storage, bleachers, and a batting cage were also added.



## Revere Athletic Facilities—New Fields

On November 8, 2016 voters approved [Issue 45](#) which provided funding to build a new high school, elementary school, and renovating-improving Hillcrest and the middle school.





**REVERE LOCAL SCHOOL DISTRICT**

**[www.revereschools.org](http://www.revereschools.org)**