

Bath-Richfield Merger

Early in 1949, discussions began between Bath and Richfield school districts regarding the consolidation of their two school districts—the Bath-Richfield Merger. On October 11, 1949 there was an official vote to consolidate the two communities (Richfield 272 to 187 and Bath 258 to 79). On November 14, 1949, Summit County Board of Education officially recognized the new system and named it the “Bath-Richfield Local School District.” (NOTE: In 1966, the Bath-Richfield School District school board voted to rename the district after the name of the high school and on July 1, 1967 it became “Revere Local School District.”)

On February 28, 1950, voters approved a bond to build a new high school (Bath 387-109 and Richfield 184-259)—it “was defeated in Richfield, but in Bath residents had cast votes that carried the point for both communities” which resulted in the purchase of 28 acres for the site of the new school at the intersection of Revere and Everett Roads.

On October 5, 1950, the school board selected “Revere High School” as the name for the new school. The name was first suggested by long time teacher and coach [Gordon E. Knapp](#) based on the road the new school was being built on. The first year of consolidated high schools was in 1951. The school began construction in August of 1951 (ground breaking was [June 17, 1951](#)).

The first year of consolidated high schools was in 1951. The school began construction in August of 1951 (ground breaking was [June 17, 1951](#)). While the school was being built, high school students spent half a day at Bath School and half a day at Richfield School (9th and 10th graders at Richfield in the morning and Bath in the afternoon). On [May 29, 1952](#) the first graduating class of Revere held their commencement in the Richfield School auditorium. On January 20, 1953, all high school students moved into the new school. The official dedication of the school occurred on [March 21, 1954](#).

Akron Beacon Journal—9-11-49

MISCELLANY—After much work on the technical details, plans are almost ready for submission to Bath and Richfield township residents for a consolidation of their two school districts. If approved, early construction of a new combined high school is contemplated, with present buildings in the two townships to be used entirely for the growing grade school enrollment.....

Akron Beacon Journal—September 29, 1949

Bath-Richfield School On Ballot

The boards of education of Bath and Richfield have proposed construction of a new high school to serve the combined districts.

Residents of the two towns will go to the polls Oct. 11 to vote on the proposed merger. The new building will not cost more than \$400,000, it has been estimated.

Bath-Richfield Merger

Akron Beacon Journal—November 15, 1949

5-Member Bath-Richfield School Board Is Named

A five-member board of education to govern the new Bath-Richfield local school district was named Monday by the Summit county school board.

Present boards in the two districts will be dissolved when the new group organizes, County Supt. Carl Coffeen explained.

The combined board will include Dr. C. P. Dietrich, president of the Bath board, and Virgil Hawkins, Richfield president. Others appointed to serve through Jan. 1, 1952, are Rice Hershey and Mrs. Margaret Mettler, both of Bath, and M. H. Rand of Richfield.

MRS. METTLER is the only person not now serving on a school board. In last Tuesday's election, she led a five-candidate slate in Bath.

In Monday's meeting at the court house, the Summit board formally united the two county schools after having received no "written remonstrances" against the proposal.

Bath has 337 pupils and Richfield, 325. The consolidation, which will be completely effected in 1950, follows a similar move in northern Summit county, uniting Northfield and Macedonia schools.

Akron Beacon Journal—October 19, 1949

NOTICE OF CREATION OF NEW SCHOOL DISTRICT

At a regular meeting of the Board of Education of Summit County, Ohio, held on the 14th day of October, 1949, the following resolution was unanimously adopted by said Board of Education:

WHEREAS, the County Board of Education of Summit County, Ohio, has been requested by the Bath and Richfield local boards of education to create a new school district by uniting the Bath and Richfield local school districts; and

WHEREAS, the State Department of Education of Ohio is urging that larger school districts be created; and

WHEREAS, in the opinion of this the Summit County Board of Education it is for the best interests of the school children to unite the Bath and Richfield local school districts; therefore be it

RESOLVED, on this the 14th day of October, 1949, by the Board of Education of the County of Summit, State of Ohio, in regular session, that for the purpose of organizing a more adequate school program for the aforesaid local school districts that a new school district be created comprising the present Bath and Richfield local school districts of Summit County, Ohio, under authority of Section 4531-1 of the General Code of Ohio, and be it further

RESOLVED that any outstanding indebtedness of the Bath and Richfield local school districts be assumed by the said newly created school district, and be it further

RESOLVED that the Clerk of this the Summit County Board of Education be and he is hereby authorized and directed to perform any and all duties required by law to assist in completing the creation of said school district.

CARL COFFEEN, Clerk, County Board of Education, Summit County, Ohio.

Oct 19 49

Akron Beacon Journal—October 12, 1949

Richfield, Bath Schools To Join

Richfield and Bath twp. school districts will be merged and ultimately a new high school building will be constructed. Residents from the two districts voted favorably for the consolidation at an informal poll held Tuesday.

A 31-day "wait" period will be enforced to allow protests to be filed. The proposed high school building, estimated to cost not more than \$400,000, would serve both school districts.

Akron Beacon Journal—March 5, 1950

CLOSE—A \$325,000 bond issue for a new high school building in the Bath-Richfield school district was approved at a special election last Tuesday with only nine votes to spare. It needed 60 per cent for enactment.

Bath Precinct A voted for the issue, 175 to 70, and Precinct B supported it by 212 to 39. Richfield Precinct A, on the other hand, cast only 93 votes for the issue and 152 against, while Richfield B tallied 91 for and 107 against.

Richfield's largest taxpayer, by the way, had no voice in the matter. The East Ohio Gas Co. pays 25 per cent of the Richfield school district's taxes, Ohio Edison Co. pays 6 per cent and other public utilities 4 per cent. The district's duplicate is \$2,991,750.

In the Bath school district, East Ohio pays 12 per cent of the taxes, Ohio Edison 8½ per cent and other public utilities 3½ per cent. The Bath duplicate is \$3,025,320.

Akron Beacon Journal—October 15, 1949

Progressive Step

The voters of Bath and Richfield townships are keeping pace with progress in education by approving a merger of their school districts.

Both townships were outgrowing their present school buildings. Although their populations are increasing, they at present have a high school enrollment of only about 100 each. That is not enough to make possible a well-rounded curriculum.

Under a consolidated school administration, the two suburban townships can establish a high school for 200 students that will offer the students a much wider choice of courses. At the same time, the present school buildings may be used just for the primary grades, thus relieving overcrowding.

The legislature, at its last session, was not yet ready to accept the recommendation of school superintendents that a law be passed which would encourage the consolidation of small school districts that now give inadequate education.

It is to the credit of Bath and Richfield people that they have recognized their community of interest and have, on their own initiative, decided to take this progressive step.

Akron Beacon Journal—January 28, 1950

BATH-RICHFIELD

School Bond Vote Feb. 28

Revere Rd. Site May Be Chosen

Voters of the recently combined Bath-Richfield school district will ballot Feb. 28 on a proposed \$325,000 bond issue designed to help finance construction of a new high school building.

Approximately \$125,000 already is available from the sale of a bond issue in the Bath school district five years ago.

The money was to have been used to expand facilities at the Bath grade and high school but this project was not carried out.

A 60 per cent favorable vote will be necessary for the proposed new issue to be carried.

THE DISTRICTS were combined by the county school board last November after a majority of the electors in the two districts signified their approval of the merger.

While the site for the building remains to be acquired, if the issue is approved, tentative plans call for it to be located on Revere rd., which is the border line between the two townships.

Atty. Rice Hershey, member of the Bath-Richfield school board, said the new high school would have an attendance of about 200 and the building would be designed to accommodate a 50 per cent expansion of attendance.

Moving the high school students from the present Bath and Richfield schools will permit expansion of facilities of the grade classes and eliminate portable buildings now used at Bath.

HERSHEY SAID the school board hopes to break ground this summer for the new building if the bond issue is approved.

County Auditor C. L. Bower has advised the board that if the new bonds are sold at 3 per cent, and if the present property valuation of \$6,000,000 continues, the average tax levy would be 4.19 mills.

The levy for 1951, Bower said, would be 5.65 and would drop to 2.87 mills in 1973.

Other members of the district school board, who were appointed after the merger last fall, are:

Dr. Carl Dietrich, Mrs. Margaret Mettler, Virgil Hawkins and Melvin Rand, who is president.

Akron Beacon Journal—February 20, 1950

School Bond Issue Will Go To Voters

PLANS FOR submitting a \$325,000 bond issue to voters of the new Bath-Richfield school district have the go-ahead sign from William A. Spencer, assistant county prosecutor.

Spencer ruled that the bi-township school board could use the proceeds of the new issue, along with a \$125,000 bond issue voted in Bath twp. school district in 1944, to finance a new \$450,000 high school building.

The question was whether funds raised in one district could be used

after that district merged with another.

WITH THIS legal technicality out of the way the voters will go to the polls Feb. 28 to decide the fate of the bond issue.

A favorable vote means early construction of a new consolidated high school at the corner of Everett and Revere rds., a mile east of Rt. 21.

Tentative plans call for a one story building with room to accommodate 300 pupils, and providing gymnasium, band room, cafeteria, auditorium, laboratory space, rooms for industrial arts, home economics, library, restrooms, and required classrooms.

Members of the new Bath-Rich-

field Board of Education sponsoring the plan are Melvin Rand and Virgil Hawkins of Richfield and

Mrs. William Mettler, Rice A. Hershey and Dr. Carl Dietrich of Bath. Rand is board president.

Bath-Richfield Merger

Akron Beacon Journal—December 1, 1950

THE FACT that there was still a rift between the two sectors became evident last Spring. When it came time to draw up a basketball schedule for the Bath-Richfield school, dissension was voiced in Richfield, where the consolidation issue had more votes against than for it.

Members of the school board, unable to figure a way to please all concerned took the easy way out and left it to a vote of the student bodies. Bath reportedly voted 90 per cent in favor of combining. Richfield, it is reported, found approximately 60 per cent of its students against it.

Akron Beacon Journal—August 18, 1951

At Bath-Richfield, the official ground-breaking ceremony for new Revere High School is over and excavating will start next week. Steel delays are also plaguing the Farinacci Construction Co. which has the general contract for the \$450,000 building.

Bath and Richfield Schools merged in 1949 but operated as separate units last year. Next month they will begin a unified but complicated system as Revere High. High school pupils will be transported between the two present school buildings to best use the home economics, industrial arts, science and similar facilities until the new school is completed.

Akron Beacon Journal—March 20, 1951

ADVERTISEMENT FOR BIDS
Sealed proposals will be received by the Board of Education of the Bath-Richfield Local School District, Summit County, Ohio, at the office of the Board in Richfield School, West Richfield, Ohio, until twelve (12) o'clock noon, Eastern Standard Time, April 20, 1951, for the work hereinafter stated, and at that time and place will be publicly opened and read aloud.

The proposed work consists of the furnishing of all labor and material for the construction of Revere High School. Separate proposals will be received upon the following sub-divisions of the work:

1. For labor and materials required for general work.
2. For labor and materials required for plumbing, heating and ventilating.
3. For labor and materials required for the electrical wiring and fixture installation.

Proposals may be submitted combining any of the foregoing branches of the work. Plans and specifications are on file in the office of W. B. Huff, Architect, 1050 No. Main St., Akron 10, for examination, and may be obtained by bidders for contract work upon deposit of \$20.00 per set, which will be returned to actual bidders, provided plans and specifications are returned in good condition within ten (10) days after the date proposals are received.

All proposals shall be submitted on forms which may be obtained from the Architect. The character and amount of Proposal and Performance bonds are stated in the "Instructions to Bidders" and General Conditions.

The right is reserved by the Board to reject any and all bids, and to waive informalities.

By Order of the Board of Education.
LESTER W. SWARTZ.

Revere Lantern—October 29, 1951

Voters to Select Revere School Board

Bath-Richfield voters will go to the polls Tuesday, November 6 to select the five-member Board of Education for the Revere District. Three members will be chosen for four year terms and two members for two year terms.

The new Board is to replace the one appointed two years ago by the County Board of Education. The old Board, composed of Rice Hershey, Carl Dietrich, and Margaret Mettler from Bath, and Melvin Rand and Virgil Hawkins from Richfield, has served since the merger of the Bath and Richfield Districts.

Realizing the importance of securing a fair representation on the School Board from both of the old school districts in order to meet the financial and integration problems of the new combined district and the building of

the new high school, each district caucus decided to nominate only three members from its district so that each district would have at least two members on the board of five.

Bath caucus went even further by selecting ten nominees and having all voters in Bath Township canvassed to select three of these ten as Bath candidates. The informal vote resulted in the nomination of Carl Dietrich and Margaret Mettler, present members of the Board, as the candidates for the four year term, and Glen Noland as the candidate for the two year term.

Richfield caucus nominated Hiram Brewster and Myrtle Haslem as the candidates for the four year term and Melvin Rand, present member, as the candidate for the two year term.

Each nomination, in order to be placed on the November election ballots, had to be supported by a petition signed by a minimum of 25 registered voters. The three petitions for the Bath District candidates were circulated and signed by the same 25 voters, each being questioned to make sure he was a resident of Bath Township and had registered as a voter for the last election.

Unfortunately, one signer was not registered, and the names of all three of Bath's candidates for the School Board will not appear on the ballots. The only way that voters in both townships can secure the election of five members to the School Board will be to write in the names of additional candidates.

For example, two members are to be elected for the two year

term. Melvin Rand's name will appear on the ballots, and spaces will be provided for writing in the names of additional members for the two year term. To vote for Glen Noland, it will be necessary that his name be written in and an "X" be placed before it. Likewise three members are to be elected for the four year terms. Hiram Brewster's and Myrtle Haslem's names will appear on the ballots, and spaces will be provided for writing in the names of additional members for the four year term. To vote for Carl Dietrich and Margaret Mettler, it will be necessary that their names be written in and an "X" be placed before each.

You are entitled to vote for two Board members for the two year term and three Board members for the four year term. The

candidates nominated by the Township Caucuses are:

For Two Year Term (Vote for two)

Melvin Rand
Glen Noland (Name to be written in)

For Four Year Term (Vote for Three)

Hiram Brewster
Carl Dietrich (Name to be written in)
Myrtle Haslem
Margaret Mettler (Name written in)

Remember to write in the names of the Board members for whom you wish to vote and whose names do not appear on the ballots and to place an "X" before each Board member for whom you wish to vote.

Akron Beacon Journal—March 16, 1952

EMPTY SCHOOL—Bath-Richfield school district, sorely in need of more seating capacity, may find itself next Fall with a fine, new high school building and not a stick of furniture or equipment to put in it.

That prospect looms as the result of the defeat by 12 votes on March 4 of a \$75,000 bond issue.

While hoping for approval of the bonds so that orders could be placed immediately for the needed furnishings, the school board had been under the impression that if the issue were defeated it could be resubmitted to the voters at the primary election May 6.

Construction of the new Revere High School at Revere and Everett rds. is proceeding, with completion scheduled for September. It will have a capacity of 500 students.

Now it develops that the bond issue can't be put on the ballot again until November. While there is some ambiguity in the law, the prevailing opinion is that a school bond issue may be submitted only once a year at a special election and that the primary, in this sense, is a special election.

Squire, Sanders and Dempsey, the Cleveland attorneys who are supreme authorities on Ohio tax law, have made it clear that they wouldn't give their blessing to a bond issue passed in May after a previous failure. They'd welcome having such a case tested in the Ohio Supreme Court, it is said. But for Bath-Richfield to put out the extra expenses for legal fees for the uncertain possibility of getting a favorable decision no earlier than October seems unwise in comparison with waiting until November, when only 55 per cent of the voters will be needed for passage as compared with 60 per cent in an election at any other time.

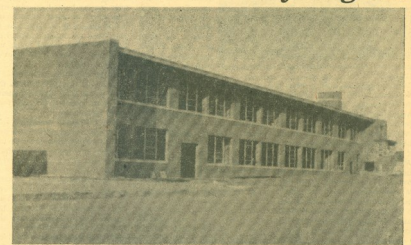
REVERE LANTERN

Vol. 2—No. 2

REVERE HIGH SCHOOL

October 17, 1952

Bond Issue to Try Again



People of Bath and Richfield will be asked to vote on two bond issues on Tuesday, November 4 of this year.

The first, an \$80,000 bond issue, is for the purpose of raising money to equip the new Revere High School building which is already nearing completion (see Special, this page), and the second, a \$220,000 bond issue is mainly for the addition of a gymnasium and an auditorium to the new building.

If the \$80,000 bond issue fails, the school will be useless. Some

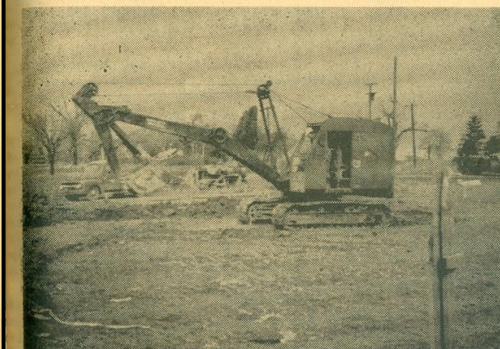
equipment can be moved from the Bath and Richfield buildings, but most of the tables, chairs, desks, cabinets, laboratory and shop equipment must be bought. In addition to all this essential class room equipment, the bond issue will provide enough to equip the kitchen and cafeteria, and also to put seats, curtains, and stage equipment into the new auditorium, and roll-away bleachers and other equipment in the gymnasium.

And the \$220,000 bond issue—why is it so important? A gymnasium is necessary in order to

have inside recreation, and, more important, a complete physical education program. Physical education is required by the state for all high school students. An auditorium is necessary for assembly programs, dramatics, and public speaking work, which are all important in education today.

Most recent estimates of the cost of the gymnasium and a balance of the \$220,000 would be used for remodeling and repairing the Bath and Richfield elementary buildings.

Auditorium and Gymnasium Now Under Construction



Revere Lantern—April 10, 1953

Photo by Jim Kamps

Excavation on the auditorium and the gymnasium was begun the last week of February, and as this issue of the LANTERN goes to press, the excavating has been completed and the "footers" have been laid.

Bath-Richfield Merger

Vol. 2—No. 6

REVERE HIGH SCHOOL

February 4, 1953

Goobbye Buses! Hello Revere!

Schweisberger Estimates January As Completion Date

Revere Lantern—September 30, 1953

"Slow," was the emphatic answer of Mr. Harold Schweisberger, Revere principal, when asked about the progress of the new Revere High School.

He went on to say that the outside of the building is near completion with only grading and the concrete ways yet to be completed.

The electrical workers are keeping pace with the masons, while the plumbers are waiting for the plastering to be done so that they may put the finishing touches on their work.

Akron Beacon Journal—May 31, 1953

Another change may be due in Bath-Richfield School District, County Supt. Carl Coffeen has indicated. The Bath-Richfield school board has been discussing candidates for the job as executive head of the school system which was consolidated several years ago.

Roy M. Pugh who has been associated with the combined school and Bath School for 33 years, was granted a year's contract last year.

Akron Beacon Journal—November 4, 1953

Bath-Richfield School District's proposed levy of 8.59 mills renewal and 2.91-mills was approved by a top-heavy vote of 1158 to 480. Only a majority was needed here.

Akron Beacon Journal—April 25, 1954

FREEWAY ROUTE—Residents in the area just to the west of U. S. Route 21 might as well postpone their worries as to whether they are going to have to move to make way for the new freeway.

As of now, not even the state highway department knows exactly where the new road will go.

A firm of consulting engineers has until late June to prepare and submit its recommendations as to the route.



Then the highway department will go over the proposals—in some locations, alternates may be suggested—and will reach a final determination.

Thus, the stakes which some people have found in their yards or in their fields represent nothing more than working tools of the consulting engineers. The road may or may not follow the line of the stakes.

Construction is not expected to start before late 1953 or early 1956, according to a letter from Director Samuel Linzell to the Bath-Richfield school board. An effort will be made to avoid large existing buildings, he said, quieting worries that the freeway might hit the Richfield grade school.

The walls on the first floor are near completion and ready for plastering, while the inside walls on the ground floor are just starting to take form.

There will be one general office a waiting room, and two private offices, plus a conference room. These will house the executives of the high school.

For the commercial department, there will be two rooms. Home economics will also have a double suite, one for cooking and one for sewing. On the ground floor is located the shop, kitchen, and cafeteria. A science lecture room, which will resemble a small amphitheater, plus two laboratories are also on the plans of Revere High School; these are the biology and general science lab and the chemistry and physics lab.

Included in the new building are a supply and book room, a music room, a hospital room, and a library complete with workroom.

As this paper goes to press it is fairly certain that Revere students will have moved into the new high school building, located at the corner of Revere and Everett Roads, on Monday, January 26. Mr. Harold Schweisberger, principal of Revere High School, states that there is very little doubt that the moving of necessary equipment from the Bath and Richfield buildings will be carried on January 22 and 23, so that the new building will be ready for use in time for the second semester. The construction of the gym and auditorium won't interfere with the school program.

The top floor will be entirely finished, but the ground floor, with the exception of the shop and science departments, is as yet incomplete.

December First-Probable Date of New Gymnasium's Completion; Grade Schools Undergo Remodeling

"Unless there are any other extended delays in construction, the new Revere High School gymnasium will probably be finished by the first of December", stated Mr. Harold Schweisberger, superintendent of the Bath-Richfield district.

Due to lack of available manpower and strikes, completion of the gym has been delayed. The new gym floor measures 80 feet by 83 feet with foldaway bleachers to the South and permanent seat on the North end. Total seating capacity is approximately 700 people.

In the Richfield building, the seventh grade room has a new floor. The former shop room floor has been sanded and the room has been converted into a classroom for kindergarten pupils.

A new concrete floor has improved the home economics room, while on the third floor the partition between the library and former typing room has been removed to form one spacious room.

Bath kindergarten and the first and second grade will occupy the new four classroom, steel building which will be completed approximately the middle of November or the first of December. This building has an approximate capacity of 140 students and is sited directly west of the Bath building.

In the Bath cafeteria the partition between the dining room and kitchen has been removed, providing a large floor space of 125 feet over the former 80 feet.

The balcony overlooking the gym floor has been sealed off to cut the noise, and bulletin boards have been constructed for use by the student body.

Revere Lantern—October 2, 1953

Bath Building Annex Nearly Done

Revere High School's new gymnasium will be completed by December 8. The gym, which will seat about 700 people, will be well equipped.

Six baskets, parallel bars, horizontal bars, a trampoline, one long horse, a wrestling mat, a tumbling mat, and a basketball scoreboard have been ordered. The only thing missing, according to Coach Frank DiNapoli, is storage space for the large amount of equipment.

The lighting in the new gym is above average. Each light contains a 1,000 watt bulb and has a separate switch and hook-up line because it is so strong.

The walls of the gym are light green and the trusses a harmonizing pale green-turquoise which contrasts with the cream color ceiling. The permanent seats are of the bleacher type and rollaway bleachers have also been ordered.

The auditorium is also near completion. Seats have arrived, and stage curtains are expected within the next few days. Seating capacity will be 350.

The annex to the Bath elementary building will be completely enclosed by December 5. Work will then be concentrated on finishing the interior of the building.

All the equipment has been ordered and a good deal of it has been delivered. It is hoped that classes may be held in the four-room annex after the Christmas holidays.

Revere Lantern—December 4, 1953

Bath-Richfield Merger

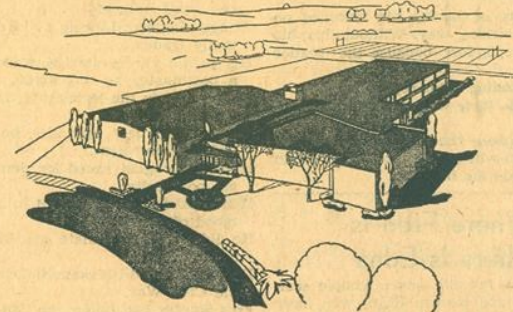
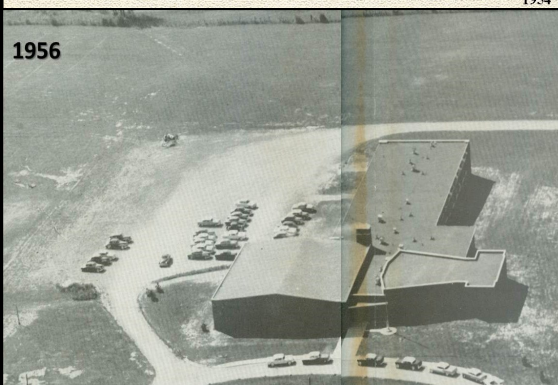
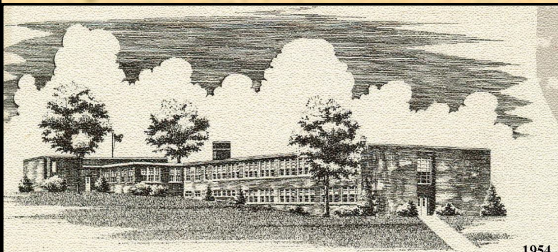
Revere Dedicates New High School

REVERE LANTERN

VOL. III—No. 8

WEST RICHFIELD, OHIO

March 21, 1954



Drawing of Revere High School when completed, as depicted on the front of the Dedication program.

Dedication of Revere High School is to be held today, March 21, at 2:15 p.m.

Mrs. Lucille Wyatt, president of the Revere P.T.A., will present a flag to principal, Roy M. Pugh.

Following the flag raising, the Revere Band will play several numbers under the direction

of Mr. Jack Russell. Invocation will be given by the Reverend James Stewart, minister of the Bath Church, after which "Halls of Ivy" will be sung by the senior boys' octet.

Mr. W. Boyd Huff, the architect, is to present the building, which will be accepted by Melvin Rand, former president of the school board.

The Junior and Senior Girls' Ensemble, under the direction of Mrs. Evelyn Schmidt will sing "Bless this House" which is to be followed by the dedication of the building, with Mr. Pugh leading the responses.

Revere's Alma Mater will be sung by the Boys' Octet and the Girls' Ensemble.

Superintendent Harold C. Schweisberger will recognize the board members, architect, and contractor; and another flag will be presented to Mike Lewis, representing the student body, by the Daughters of America.

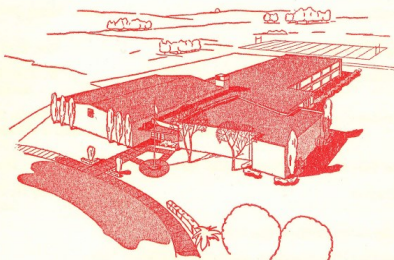
Present members of the Board of Education are Hiram Brewster, president; Mrs. Margaret Mettler, vice-president; Mrs. Myrtle Haslem, Emerald Moats, Paul Baumgardner, and Lester Swartz, clerk.

Mr. Lester Swartz will then lead the audience in singing the "Star Spangled Banner", and the Benediction will be given by Reverend John Huston, minister of the Richfield Federated Church.

Open house will be held after the dedication at which time the Revere P.T.A. will serve refreshments in the cafeteria.

Presenting REVERE HIGH SCHOOL

HRS



Education Is the Cornerstone of Democracy

March 7, 1954

2:15 P. M.

BATH-RICHFIELD LOCAL SCHOOL DISTRICT

FLAG RAISING CEREMONY

East Entrance

Presentation of Flag from P.T.A. Mrs. Lucille Wyatt
Acceptance of Flag Roy M. Pugh

Flag Raising

PROGRAM

Band Selections Revere Band
Invocation Rev. James Stewart
Halls of Ivy — Senior Boys' Octet Arr. Williams
Presentation of Building W. Boyd Huff Architect
Acceptance of Building Melvin Rand
Former President of Board of Education

Bless This House — Junior-Senior Girls' Ensemble Brache
Dedication Roy M. Pugh
Leader

Leader — We dedicate this building —
Response — To friendship and unselfishness.
Leader — We dedicate this building —
Response — To the cultivation of moral and spiritual values. To the search for truth and beauty.
Leader — We dedicate this building —
Response — To the varied and equal opportunity for a liberal education to all who enter its walls.
Leader — We dedicate this building —
Response — To the development of intelligence and skill.
Leader — We dedicate this building —
Response — To law and order and faith in American Ideals.

Leader, Teachers, and Pupils together — "And now we, pupils and teachers of this school, dedicate ourselves to the noble task of learning and teaching. May we hold this beautiful building as a sacred trust and pass it on to those who come after us, fair and unsullied and rich with growing tradition of scholarship and fine achievement."

Alma Mater — Boys' Octet and Girls' Ensemble Plank
Recognition Harold C. Schweisberger
Board Members — Architect — Contractors

Flag Presentation Daughters of America
Acceptance of Flag George Lewis
Star Spangled Banner Led by Lester Swartz Entire Assembly
Benediction Rev. John Huston

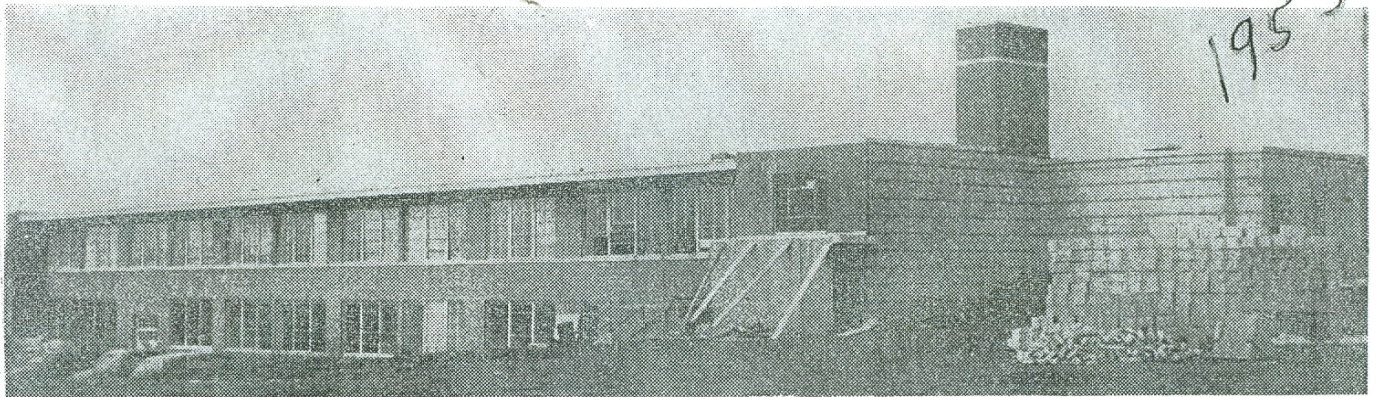
Vocal music directed by Evelyn Schmidt
Instrumental music directed by Jack Russell
Open House is observed after the program.

REVERE HIGH SCHOOL STATISTICS

Cost of classroom section	\$443,891.32
Cost of gymnasium and auditorium	153,846.00
Cost of equipment	80,000.00
Cost of site	9,000.00
Present enrollment	210
Rated capacity of building	325
Seating capacity of gymnasium	650
Seating capacity of auditorium	362
Size of site in acres	28

Bath-Richfield Merger

Begin Using Bath-Richfield Building--At Last!



UNFINISHED REVERE HIGH SCHOOL AWAITS GYM, AUDITORIUM

Pupils, Workmen Attend New Revere

★ ★ ★ ★
Construction And Classes Go Along Together In School

By FRANCES B. MURPHEY
REVERE HIGH, a building which has had more troubles than most soap opera heroines, is finally coming into its own.

This week pupils and teachers from the combined Bath-Richfield School District took possession of the brick-faced ranch-style building at Revere and Everett rds.

But going to school along with them are carpenters, electricians, plumbers and other craftsmen.

THE SOUND of pounding and sawing merges with lectures on biology and speed tests in typing as work continues on the main classroom building. And still, to be built are the gymnasium and auditorium.

The complete Revere plant, which is likely to cost \$750,000 when fully equipped, probably won't be ready until next Fall.

Supt. Roy Pugh and Principal H. C. Schweisberger hope to have the almost-completed central unit in apple-pie order by April.

They admit things are a bit make-shift these days at Revere.

MOST of the classrooms on the second floor have been finished but a suite of science rooms, the industrial arts shop, the cafeteria and school kitchen on the first floor are not ready for use.

The West entranceway is completed but other entrances are

still blocked off. The parking lot is a mudland on warm days and a rutted wasteland on cold days. On opening day of school a truck delivering slag on the parking lot became mired.

The modern music room with its three sound-proof practice rooms isn't equipped yet. Only four of 13 teachers' desks on order have arrived. Work has hardly begun on the East wing which will house the gym and auditorium approved by voters in the school district last November.

BUT REVERITES are happy. Things are looking up.

There may be no number plates on the lockers in the upstairs hall yet but the mathematics room offers chalkboards on three sides.

In the attractive library Mrs. Mildred Hess, librarian, is busy cataloging 3,500 books. Several long tables and a round "browsing" table are soon due for the library which for the first time combine books used in Bath and Richfield schools.

As Principal Schweisberger explains: "The opening of this new building ends something which is seldom tried—running one high school in two buildings."

To use the best facilities in both schools, freshmen and sophomores have spent the mornings in the Richfield building while juniors and seniors went to Bath. Busses switched the groups each noon.

BATH and Richfield schools were officially consolidated in November of 1942.

In March of 1950, a bond issue of \$325,000 was passed by the combined district to finance the new high school. A \$125,000 issue previously passed by Bath district in 1945 was to be added to the building fund.

Construction costs rose and the school system had to turn to the voters again. Last March it was rebuffed in appeals for more money for equipment and the remainder of the original building.

LAST FALL voters did approve \$80,000 for equipment and \$220,000 to cover the auditorium-gym wing and alteration of the old Bath and Richfield high school buildings for elementary purposes.

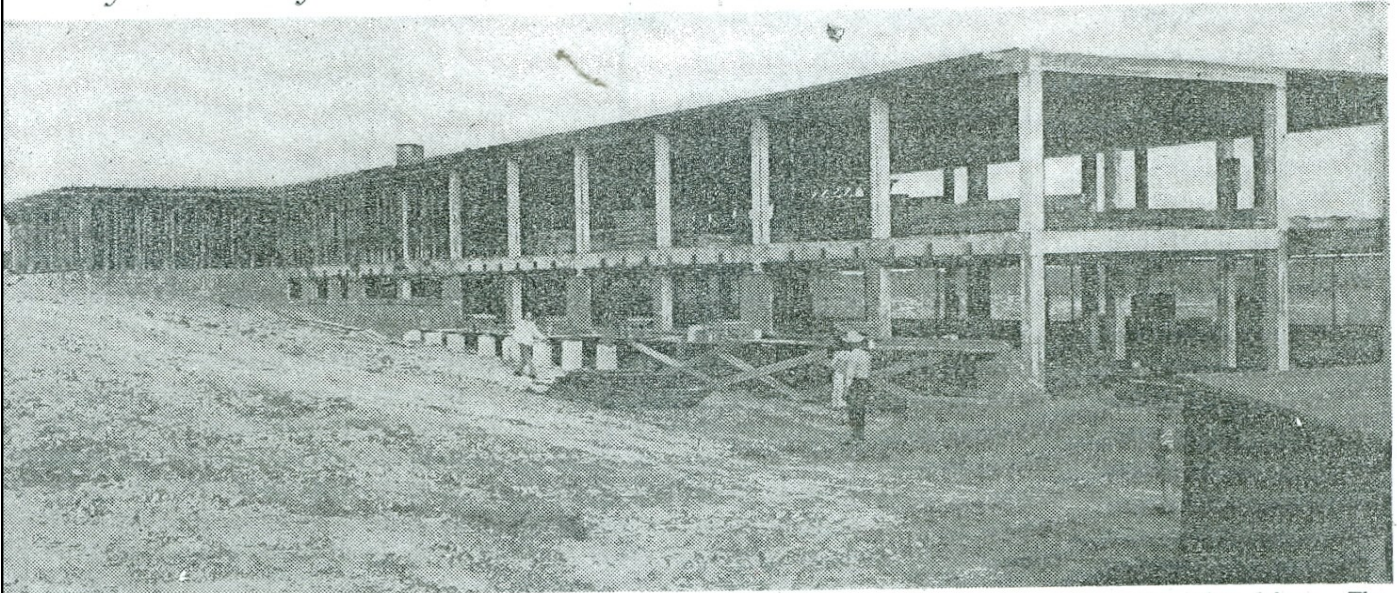
The new Revere, designed by Architect William Boyd Huff and built by Farinacci Construction Co., will be able to accommodate 325 pupils. The present enrollment is 192.

Melvin Rand is president of the district's Board of Education and has headed the school board since the merger.



Bath-Richfield Merger

Maybe They Need Some Vitamins Around These Parts



Here is the shell of Revere High School, which serves the consolidated Bath-Richfield school district. Although construction began a year ago, the building has progressed only to this skeletonized version of a modern school. Offi-

cials have blamed the weather and construction delays. The best guess is that it will be ready for students toward the end of the year.

Revere High Construction Slow But Sure

★

★

★

★

After Year's Work School Still Far From Finished

BATH-RICHFIELD—Construction of the new Revere High school makes the turtle in the Hare and Tortoise Fable look like a greyhound.

A year ago, on a Sunday afternoon, Melvin Rand, president of the Board of Education, lifted the first shovel of dirt in a brief ground-breaking ceremony.

Today, the school consists of a reinforced concrete shell. It is not a finished job by many months.

It was hoped the building would be completed in time for school in September. Now the delivery date has been pushed back to the end of the year.

Blame has been placed on the weather and a "delay in

construction." With the preliminary work done, construction is expected to speed up.

* * *

AS IN THE case of the turtle, who won his race, residents are assured the job will be completed. Officials could point out that the rabbit failed to finish the race.

Although on tenterhooks awaiting the new building, the consolidated school staff, with two administrators, 35 teachers and 18 others, has carried on with crowded conditions and transportation problems.

Revere High School's first graduating class contained 43 members. During the recent commencement in the Richfield auditorium, some of the parents and friends were forced to stand in the aisles.

★



The Board of Education is preparing a handbook this Summer to explain board policies in detail.

To take advantage of discounts in the purchasing of materials and supplies in larger quantities, all buying will be done by the clerk, Lester Swartz.