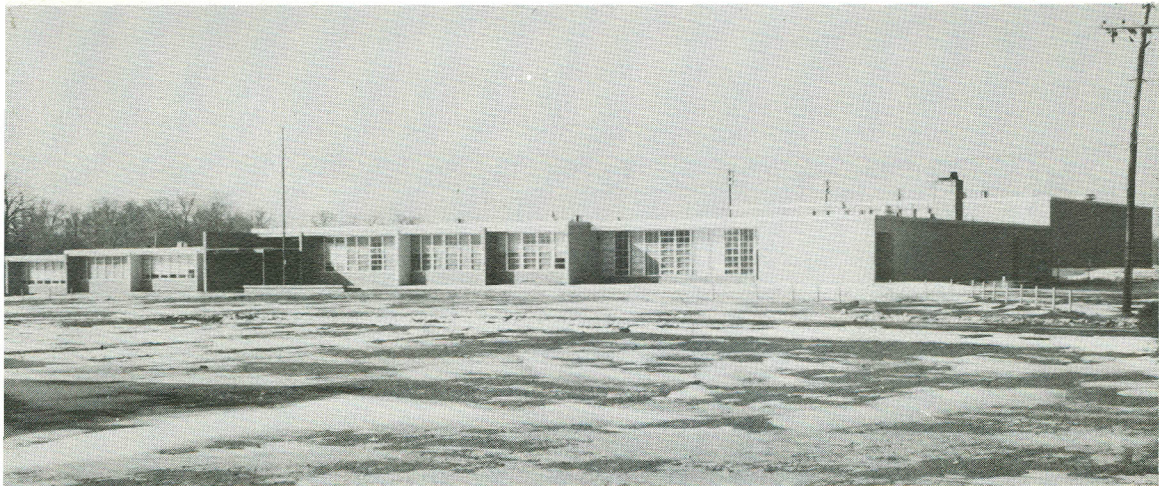


# Dedication Services

of



## EASTVIEW JUNIOR HIGH SCHOOL

Sunday, April 16, 1961

BATH-RICHFIELD LOCAL SCHOOL DISTRICT

# Program

- Music . . . . . Junior High Band  
Robert Lutz, Director
- Invocation . . . . . Rev. Errett Scott
- Daughters of America  
West Richfield Council 289
- Presentation of Flags . . . . . and  
AmVets of World War II  
and Korean Conflict
- Pledge of Allegiance
- Introduction of Guests . . . . . Harold C. Schweisberger  
Executive Head
- Presentation of Building . . . . . Joseph Tuchman  
Architect
- Acceptance of Building . . . . . Mrs. Lucille Wyatt  
President, Board of Education
- Music . . . . . Eighth Grade Chorus  
Bryson Fillmore, Director
- Service of Dedication . . . . . Mrs. Esther Burkett  
Principal, Eastview Junior High School
- Leader: For the development of healthy minds and bodies - and the directing of youthful energy toward expression in clean and wholesome amusements.
- People: We dedicate this school.
- Leader: To the moral and spiritual training of our children in those fundamental subjects from which radiate all of the broader horizons of a fully rounded life.
- People: We dedicate this school.
- Leader: To an understanding of the basic importance of the home; neighbors, communities, nations, and races; and the tolerance needed to understand and live in peace with one another.
- People: We dedicate this school.
- Leader: To the acquiring of skills and appreciation in the fields of art, music, literature and handicrafts so that leisure hours may be enriched and personality and character developed in each child.



People: We dedicate this school.

Leader: To the training for citizenship that will lead to safe, clean and wholesome community life; enriched by service to, and acquaintance with, one's fellow man.

People: To this we dedicate this building and pledge ourselves to cooperate with the school officials in the realization of this goal.

Leader: To the development in youth of an appreciation and understanding of the many vocations in life and the ones in which their interests and aptitudes may be best adapted.

People: We dedicate this building and offer our personal assistance and guidance.

Leader: To realize that each child is an individual having varied degrees of ability and physical skills possessed of certain moral and ethical beliefs; to present to the child complete truths but to grant him the right of acceptance or rejection, to stress idealism, devotion and similar traits by introducing him to heroes and heroines from the past and present day, thus permitting the child to develop character by selection rather than through compulsion.

People: To this end we of the home and church will cooperate with the school in the development of the Seven Cardinal Principles of Education which are Health, Fundamental Subjects, Home and Community Living, Skills for Leisure Hours, Citizenship, Vocations and Character, and to these great principles we dedicate this school.

Dedication Address . . . . . Dr. William B. Edwards  
Superintendent, Lakewood Schools

Music . . . . . Eighth Grade Chorus  
Bryson Fillmore, Director

Benediction . . . . . Rev. James Stewart

BOARD OF EDUCATION

Lucille Wyatt . . . . . President

James Rand . . . . . Vice President

Lester Swartz . . . . . Clerk

Jane Cauffield - Frank Holeski - James Jackson

Mr. Paul Baumgardner served on the Board of Education at the beginning of this building program.

## ADMINISTRATION

Carl Coffeen . . . . . County Superintendent  
Harold C. Schweisberger . . . . . Executive Head  
Esther Burkett . . . . . Principal

## EASTVIEW SCHOOL STAFF

Orrin G. Cocks	Alfred Morse
Ruth Cox	Edward Plants
Stephen Dzuro	Frances Rankin
Nancy Fickes	David Sikuti
Gladys Fillmore	Albert Smesko
Florence Garman	Rita Tersigni
Beverly Hurless	Maureen Webb
Karen Klomp	Paul Webb
Joseph LaCamera	Frances Welsh
Russell Lewis	Jack Wilhelm

Ruth Vogel

Elizabeth Crosier, Secretary	James Lytle, Custodian
Edith Pandy, Secretary	Ann Metz, Cafeteria Manager
Bernard Wallace, Custodian	Frances Cranz, Cook
Frank Sabo, Custodian	Josephine Keckler, Cook

## EASTVIEW SCHOOL STATISTICS

Cost of Building . . . . .	\$768,758.00
Cost of Equipment . . . . .	90,000.00
Cost of Site . . . . .	19,186.00
Present Enrollment . . . . .	574
Capacity of Building . . . . .	600
Size of Site in Acres . . . . .	11