

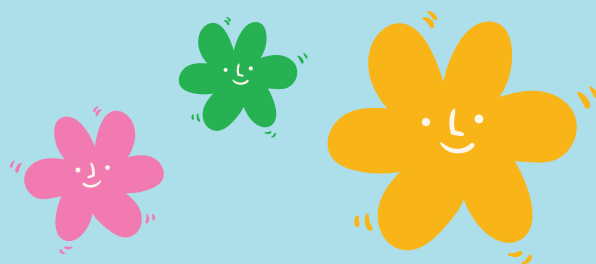
# WHY PRE-K?

Attendance in Pre-K results in better kindergarten readiness, improved vocabulary, and enhanced reading skills. However, the benefits go beyond the student's school years and into their adult lives. A nationwide and a Texas wide study reveals that children who attend Pre-K are more likely to perform better in school, have higher graduation rates, and are more likely to obtain greater employment and higher wages as adults.

Approximately 90% of a child's brain development happens before the age of 5, and we have a small window to make a big difference! By learning early on how to focus, problem solve, listen and regulate emotions, students can prepare their minds for academic success.



[WWW.SHELDONISD.COM](http://WWW.SHELDONISD.COM)

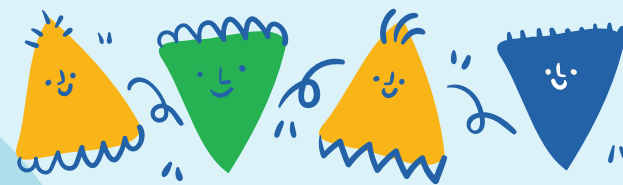


*PRE-KINDERGARTEN IN SHELDON ISD IS A CUSTOMIZED EXPERIENCE FOR ALL LEVELS OF LEARNERS, PREPARING OUR YOUNGEST SCHOLARS FOR THE ACADEMIC CLASSROOM IN YEARS TO COME.*

For more information, contact  
Dr. Denise Mustin,  
Director of Early Childhood

281-727-2061

[DeniseMustin@Sheldonisd.com](mailto:DeniseMustin@Sheldonisd.com)



**READY - SET - GROW**



**PRE-K IN SHELDON ISD**



**SHELDON ISD**   
Where Vision Becomes Legacy

**SHELDON ISD IS HOME TO TWO  
EARLY CHILDHOOD ACADEMIES  
(ECA) THAT PROVIDE SERVICES  
TO PRE-KINDERGARTEN AND  
KINDERGARTEN STUDENTS.  
APPROXIMATELY 1,200 STUDENTS  
BENEFIT FROM EARLY CHILDHOOD  
PROGRAMS AT SHELDON ECA AND  
CRAVENS ECA.**

## **SHELDON EARLY CHILDHOOD ACADEMY (SECA)**

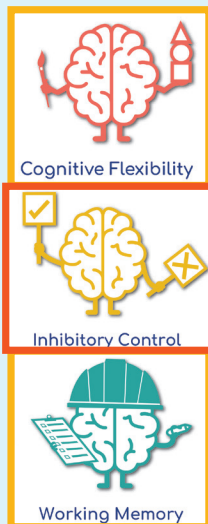
17010 Beaumont Highway  
Houston, TX 77049  
281-456-6800

Email: sheldoneca@sheldonisd.com

## **STEPHANIE CRAVENS EARLY CHILDHOOD ACADEMY (CECA)**

13210 Tidwell  
Houston, TX 77044  
281-727-2100

Email: cravenseca@sheldonisd.com



### **Culture of Child Centered Learning in our Fueling Brains Pre-K programs:**

In our Pre-K program, the focus is on planning lessons based on children's interests, self inquiry and learning through play. Emphasis is placed on building social, emotional, physical, and cognitive skills. Academic skills are built through play-based activities. Sheldon ISD focuses on the whole child while developing their fluid intelligence and brain executive functions.



## **OUR PROGRAM DESIGN**

Sheldon ISD has partnered with Fueling Brains and has implemented a left brain, right brain, movement approach to instruction to develop the executive functions (cognitive flexibility, working memory, and inhibitory control) of each child. Pre-kindergarten classrooms are divided into teams of two - one teacher focuses on left-brain learning and another focuses on right-brain learning. The right-brain classroom allows for collaboration and dramatic play, while the left brain classroom encourages independent stations and logical thinking strategies. Units are broken up into themes throughout the year and teach children how to take initiative in their learning, offering choice and focusing on the skills needed to learn first followed by the specific learning outcome. The learning environment is the third teacher providing a place for students to explore and create.



**fuelingbrains**

 **New Themes every  
3 Weeks**



**Weekly Customized  
learning plans for each child**



**Kindergarten Dual  
Language Opportunities**



**1 Teacher & Aide  
in each Classroom**