

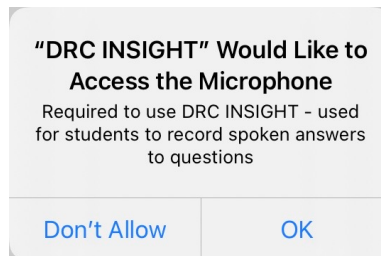
Steps to manually install DRC Insight on an SPPS iPad

1. Open Self Service and search for 'DRC Insight'



2. Select 'Install' then return to home screen
- Wait for DRC Insight app to fully install

3. When opening DRC Insight for the first time the following message will appear:



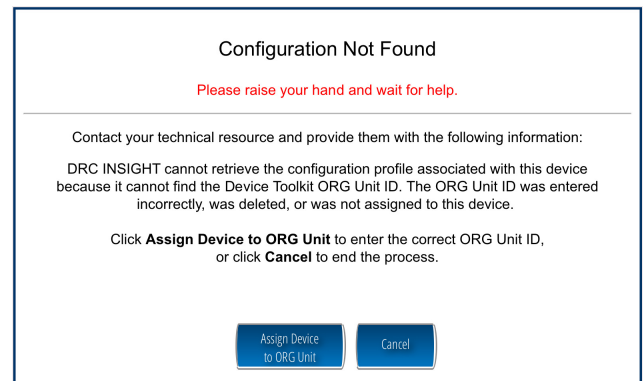
4. Select 'OK'



Steps to register DRC Insight app

If 'Configuration Not Found' appears upon opening the DRC Insight app:

1. Select 'Assign Device to ORG Unit'
2. Enter school's ORG Unit in space provided, then select 'Add'
3. School's name should appear, then select 'Register'



If the pictured pop up appears, select yes
This confirms app configuration to your school

