



Saint Paul
PUBLIC SCHOOLS

Envision SPPS: Our plan for well-rounded programs

Board of Education - Special Meeting

Jackie Turner, Chief Operations Officer

October 25, 2021

What you will learn:

1. Responses to questions from Oct. 11 special meeting:

- Demographics in Area C
- Keeping buildings vibrant community assets
- Early Childhood Education hubs

2. Next steps

- Virtual information sessions
- Board of Education listening sessions
 - Board of Education meetings
- Site-specific meeting

Demographics in Area C

Where Area C K- 5 Students Attend

Vento	315
Mississippi	302
SP Music Ac	260
J A Johnson	225
Wellstone	162
Farnsworth Lw	126
Crossroads	117
Phalen Lk	117
Mays	83
Capital Hill	76
AIM	72
Obama	68
FourSeasons	65
Nokomis N	42
JJHill	34
JM Mandarin	34
Adams	32

Farnsworth Up	32
Jackson	32
Chelsea Hgts	25
ComoElem	23
Hazel Pk	20
LNFI Up	18
Maxfield	18
DaytonBluf	17
FrostLake	16
The Heights	15
GlobalArtsLw	14
Hland Pk El	14
Bridge Vw	12
LNFI Lw	12
St Anthony Pk	10
Galtier	9
Groveland Pk	9

Battle Creek El	8
Riverview	8
EXPO	7
Hamline	7
Nokomis S	7
Randolph Hgts	7
EasternHgts	6
Cherokee Hgts	5
Global Arts Up	3
RiverEast	3
HoraceMann	2
Highwood Hills	1
Total	2,490

**Keeping buildings vibrant
community assets**

Plans for how to keep SPPS buildings vibrant

- Early childhood education programs fall 2022 to be repurposed into hubs:
 - L'Etoile du Nord - Lower, 1305 Prosperity Ave.
 - Galtier Community School, 1317 Charles Ave.
- Exact plans for programs to be determined per envisioning process:
 - Highwood Hills Elementary, 2188 Londin Lane
 - John A. Johnson Achievement Plus Elementary, 740 York Ave.
 - Jackson Preparatory Elementary School, 437 Edmund Ave.
 - LEAP High School, 631 N. Albert St.
 - Paul & Sheila Wellstone Elementary, 1041 Marion St.

Options to keep buildings vibrant

- Highwood Hills Elementary
 - Recreation Center (lease) programming to continue
 - Community use will remain open
- Wellstone
 - Recreation Center (joint use) programming to continue
 - Title Services staff to continue to office

Options for keeping buildings vibrant

- Early childhood education hub
- Service and student support center
- College and career centers
- Summer school hub site
- 12-hour day model school to community center
- New magnet option to fill student interest gap, e.g., social justice, service learning, others TBD (Cruz Gusman)
- Online school staff site

Timeline for repurposing sites

- Nov. 2021 - Feb. 2022:
 - Building analysis; building utilization to generate potential usage feasibility for each building
- March - May 2022: Stakeholder engagement with site utilization facts
- Summer 2022: Board of Education update on findings
- Fall 2022:
 - Implementation of plans for certain sites, e.g., Early childhood education hub
 - Repurposing planning (pre-design) begins for other sites

Wellstone: Keeping Rice Street vibrant

	2021		2022		2023		2024		2025	
	Jan - June	July - Dec	Jan - June	July - Dec	Jan - June	July - Dec	Jan - June	July - Dec	Jan - June	July - Dec
Wellstone Dual Immersion and BioSMART										
Construction Mechanical system			Design	Design / Bid	Construct					
Temporary Relocated Program(s) Construction at that school(s)										
New Program Based on Envisioning process and stakeholder engagement										

Discussion

Early Childhood Education



Early Childhood Education

- Early Learning Programs
 - Early Childhood Family Education (ECFE)
 - Early Childhood Special Education (ECSE)
 - Early Childhood Screening
 - Pre-Kindergarten

Early Childhood Workgroup - Purpose Statement

Determine and illustrate how underutilized SPPS elementary schools can be leveraged to create Early Childhood Education hubs encompassing Pre-K, Early Childhood Special Education (ECSE), Early Childhood Family Education (ECFE), and other early childhood resources to support early learners and their families in centralized locations.

Early Childhood Workgroup findings

- History of early learning programming in Saint Paul Public Schools
- Struggle for identity, frequent moves, dispersed programs
- Where are the children?
 - What options are in the area for Early Care and Education?
 - Impact on Saint Paul Public Schools
- Unique facility needs

Early Childhood Workgroup findings

- Historical perspective
 - Early Childhood Family Education (ECFE)
 - Early Childhood Special Education (ECSE)
 - Pre-Kindergarten
- Programmatic inefficiencies
 - Impact on families

Findings

1. The Why for Hubs

- One-stop-shop for Families
 - Community Resources, Programming, facilities designed for early learners

2. Hub includes

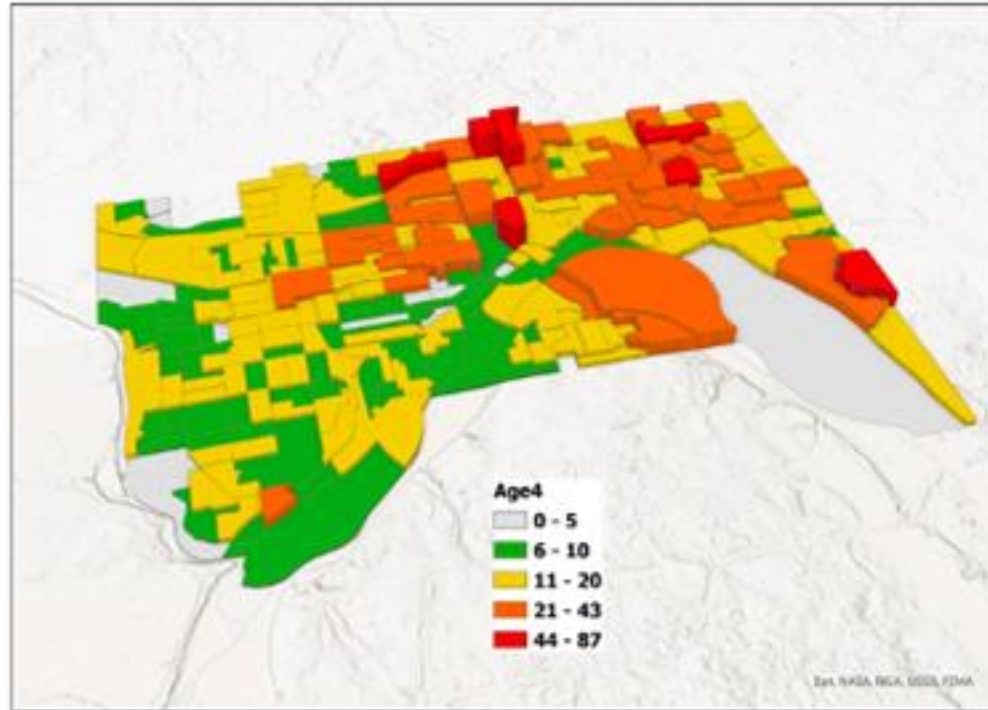
- Early Childhood Family Education (ECFE)
- Early Childhood Special Education (ECSE)
- Pre-Kindergarten
- Early Childhood Screening

3. Need

- PreNatal to 3 Forum Findings

Early Childhood Work Group Findings:

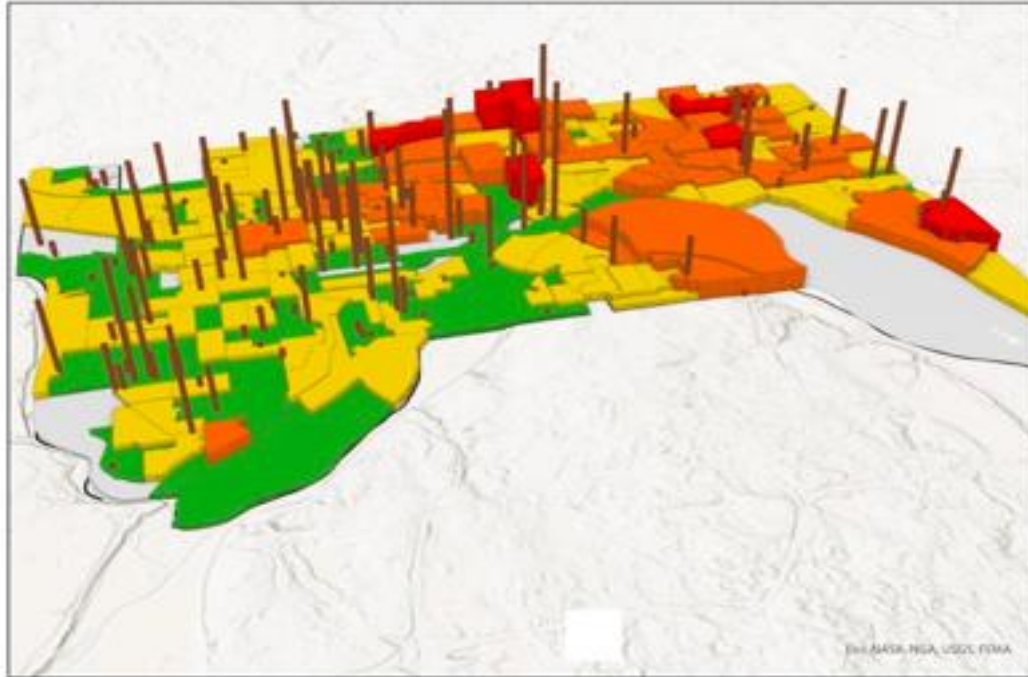
Where Do Four Year Old Children Live in St Paul By Census Block Group?



Source: ESRI Demographics

Early Childhood Workgroup Findings:

Where Are Large and Small Childcare Centers Concentrated (Spring 2021)



Source: Minnesota Department of Human Services; ESRI Demographics

Early Childhood Workgroup Findings

- One-stop-shop experience
- Hub offers
 - Early Childhood Screening
 - Parent Educators
 - Head Start, Early Care and Education Partners
 - Learning Lab
 - Community Services
 - WIC, Mental Health, Medical, Dental

Early Childhood Workgroup Findings

- Unique Facilities
 - Facility dedicated to early learners and their family
 - Buildings that are fully accessible for inclusive opportunities
 - Dedicated spaces for community partners
 - Fenced playgrounds

Early Childhood Landscape

- Universal Pre-K and Citywide 3K Initiative
- Early Childhood Special Education
- Next Steps
 - Identifying the building(s)
 - Plan program features with community input

Potential Sites for Early Learning Hubs

- L'Etoile du Nord Lower
 - Use of Wheelock Early Learning
 - Pre-Kindergarten/ECSE
- Galtier
 - Pre-Kindergarten/ECSE
 - Rondo Classrooms
 - Fraser

Early Childhood: Next Steps

- Plan program features that:
 - Build upon the vision of the Workgroup
 - Strategically meet SPPS' needs
 - Integrate community input
- Analysis of which buildings best fit this model
 - Each facet of early learning programs have unique spatial or functional needs
 - Each building tailored to have program match space and community

Discussion

Engagement Next Steps

Public Information Sessions

1. **IAP2: Inform:** “Provide the public with balanced and objective information to assist them in understanding the problem, alternatives, opportunities, and/or solutions.”
2. **Purpose:** Provide accurate and detailed information on how and why Envision SPPS recommendations were made
3. **Audience:** SPPS families, staff, partners and community
4. **Format:** Virtual; Narrated overview followed by Q&A

Information Sessions - Virtual only

- **English: Oct. 26 and Nov. 8 from 6-7:30 p.m.**
- **Hmong Nov. 1; Karen Nov. 4; Somali No. 1 & Nov. 5; Spanish Nov. 3**
- The day of, visit **SPPS.ORG/Envision** to access links for view public hearing
- **Format:** Watch via EduVision and submit questions via chat function
 - Questions answered in real time via moderated panelists

Listening Session and Public Hearing

1. **IAP2: Consult:** “Obtain public feedback on analysis, alternatives, and/or decisions.”
2. **Purpose:** Opportunity to listen to stakeholders’ concerns
3. **Audience:** SPPS families, staff, partners and community
4. **Format:** In-person; brief intro/welcome; time-limited public comment

Listening Session and Public Hearing - In-person and virtual viewing

- **Listening Session: Oct. 28 begins at 5:30 p.m.**
- **Public Hearing: Nov. 11 begins at 5:30 p.m.**
- **Location: 360 Colborne Ave.**

Listening Session and Public Hearing - Format

- Interpreters on site for Hmong, Karen, Somali, Spanish
- Format: In-person; brief intro/welcome; time-limited public comment
 - Public signs up at the session to speak
 - Speakers have up to 3 minutes to speak
 - Speakers encouraged to vacate the building after speaking and continue to watch via livestream
 - Allows for less crowded conditions and more social distancing

Information Meetings with Affected Schools

- **Dates: Oct. 20 to Nov. 10**
- Questions:
 - What component, actions or activity need to be conducted, planned or facilitated to help with the potential transition?
 - What specific support could the district provide to help a potential transition?
- General themes will be documented to share with Board of Education and administration

Board of Education meeting dates

- Work sessions: Nov. 1, Nov. 8, Nov. 15
- Committee of the Board: Nov. 9
- BOE vote: Nov. 16

QUESTIONS?

Website: spps.org/envision

Email: envision@spps.org