



Saint Paul
PUBLIC SCHOOLS

Envision SPPS:

Align school facilities with well-rounded programs

Board of Education - Special Meeting

Board vote

Jackie Turner, Chief Operations Officer

December 1, 2021

Agenda

1. Envision SPPS objective and process
 - The Why: A well-rounded education for all students
2. Program closures, mergers and relocations
3. Summary overview and systemic impact
4. Recommended resolution to adopt Envision SPPS

Envision SPPS

Objective and Process

SPPS Achieves: Envision SPPS

Strategic plan priority: Program Evaluation / Resource Allocation

Objective 5: Allocate resources based on program effectiveness and organizational priorities.

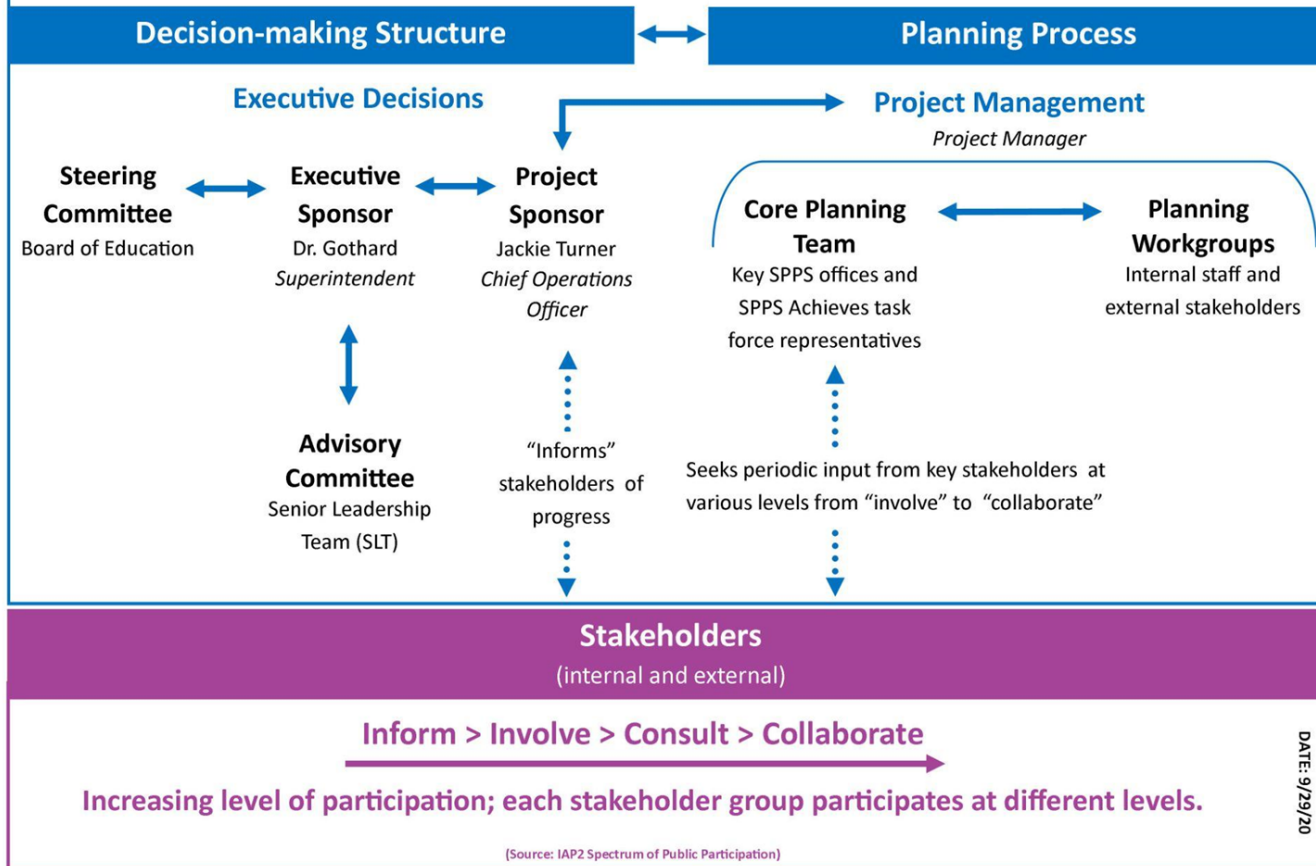
Objective: 5.3 Align school facilities with well-rounded programs

- Develop operational measures to assess building utilization, virtual connectivity, transportation costs, and equitable access to well-rounded programs
- **Align well-rounded education program measures, ideal school sizes, and parent demand for programs to determine facility allocations and major capital investment decisions**
- Adjust capital investments to ensure they meet the District's equity policy goals.

Rationale for closing and merging schools:

- At SPPS, we believe all students deserve the full range of educational opportunities and student support that a robust, well-rounded education affords.
- A well-rounded education is one that meets the Minnesota state's educational standards by providing students with learning opportunities that give them the skills to succeed in school, college and career.
- Barriers to providing all SPPS students with a well-rounded education at every school include declining birth rates and increased competition from schools outside of SPPS.
- This has resulted in an excess of 8,000 empty seats across Saint Paul Public Schools making many school programs unsustainable.
- As a result certain school programs have been identified to be closed so that students can be relocated to programs that provide access to a well-rounded education.

Decision-making Structure and Planning Process



Collaborative Workgroups

1. College and Career Paths

Co-Led by: Leah Corey, Anna Morawiecki

2. *Early Childhood Education

Led by: Lori Erickson

3. *Enrollment

Led by: Jayne Williams

4. Facilities Utilization/Alignment

Led by: Tom Parent

5. *Language Immersion

Led by: Dr. Efe Agbamu

6. *Integration

Led by: Sherry Carlstrom

7. Middle School Model

Led by: Amanda Herrera-Gundale

8. *Montessori Pathway

Co-Led by: Jayne William, Andrew Collins

9. *Special Education

Led by: Marcy Doud

10. *Talent, Development and Acceleration Service Pathway (TDAS)

Led by: Benjamin Lacina

11. Well-rounded Education

Co-Led by: Megan Dols Klingel, Craig Anderson

Filtering relevant findings through these CRITERIA:

- Data
- Facilities
 - Operational efficiency
 - Retain capital investments
 - Requires new capital investments
 - Spatial alignment
- Equity
 - Avoid unintended consequences
 - Integration
- Accessibility:
 - Physical
 - Program accessibility (transportation)
- Location and density of students and schools
- Enrollment
- Market demands
- Pathway programming
- Financial/funding
 - Sustainability
- State statutes/legal (known)
- Unknowns
 - Legislative (state/federal)
 - Cruz-Guzman

Engagement: Inform > Consult

Information meetings

- 19+ school-based information sessions: Oct. 20-Nov. 10
- 5 multilingual-specific information session - Hmong, Karen, Somali, Spanish: 1st week of Nov.
- 2 Public information sessions: Oct. 26 and Nov. 8
- 2 BOE listening sessions: Oct. 28 and Nov. 11
- 1 Public Hearing: Nov. 30

Board of Education meetings:

1. BOE Special Session - Nov. 29, 2021
2. BOE Special Session - Nov. 15, 2021
3. BOE Committee of the Board - Nov. 9, 2021
4. BOE Special Session - Nov. 8, 2021
5. BOE Special Session - Nov. 1, 2021
6. BOE Special Session - Oct. 25, 2021
7. BOE Special Session - Oct. 18, 2021
8. BOE Special Session - Oct. 11, 2021
9. BOE - Committee of the Board - Oct. 5, 2021
10. BOE Special Session - Oct. 4, 2021
11. BOE Special Session - Sept. 20, 2021
12. BOE Regular Meeting - July 20, 2021
13. BOE Regular Meeting- January 19, 2021
14. BOE Regular Meeting- February 18, 2020

Program closures, mergers and relocations

Envision SPPS program changes, closures, relocations and/or expansions effective SY22-23

Area A:

- L'Etoile du Nord French Immersion (LNFI) lower merges at the LNFI upper campus
- LNFI lower site reopens as early childhood education hub
- Parkway reopens as Hmong Language Immersion and Culture program upper campus (to Phalen Lake lower campus)

Area C:

- J. A. Johnson merges at Bruce Vento

Area D:

- Cherokee Montessori program relocates and merges at J.J. Hill
- Cherokee reopens as a community school
- Riverview community program closes and merges at Cherokee

Area E:

- Galtier merges at Hamline
- Gatliter reopens as early childhood education hub

Area F:

- Jackson community merges at Maxfield
- Jackson Hmong Language merges at Phalen Lake

Envision SPPS program changes, closures, relocations and/or expansions

Area F:

- J.J. Hill Montessori relocates to the Obama site once remodeling is complete (either fall 2024 or fall 2025) and reopens as the Barack and Michelle Obama School and will also house a middle school (grades 6-8)

At the start of school year 2025-26:

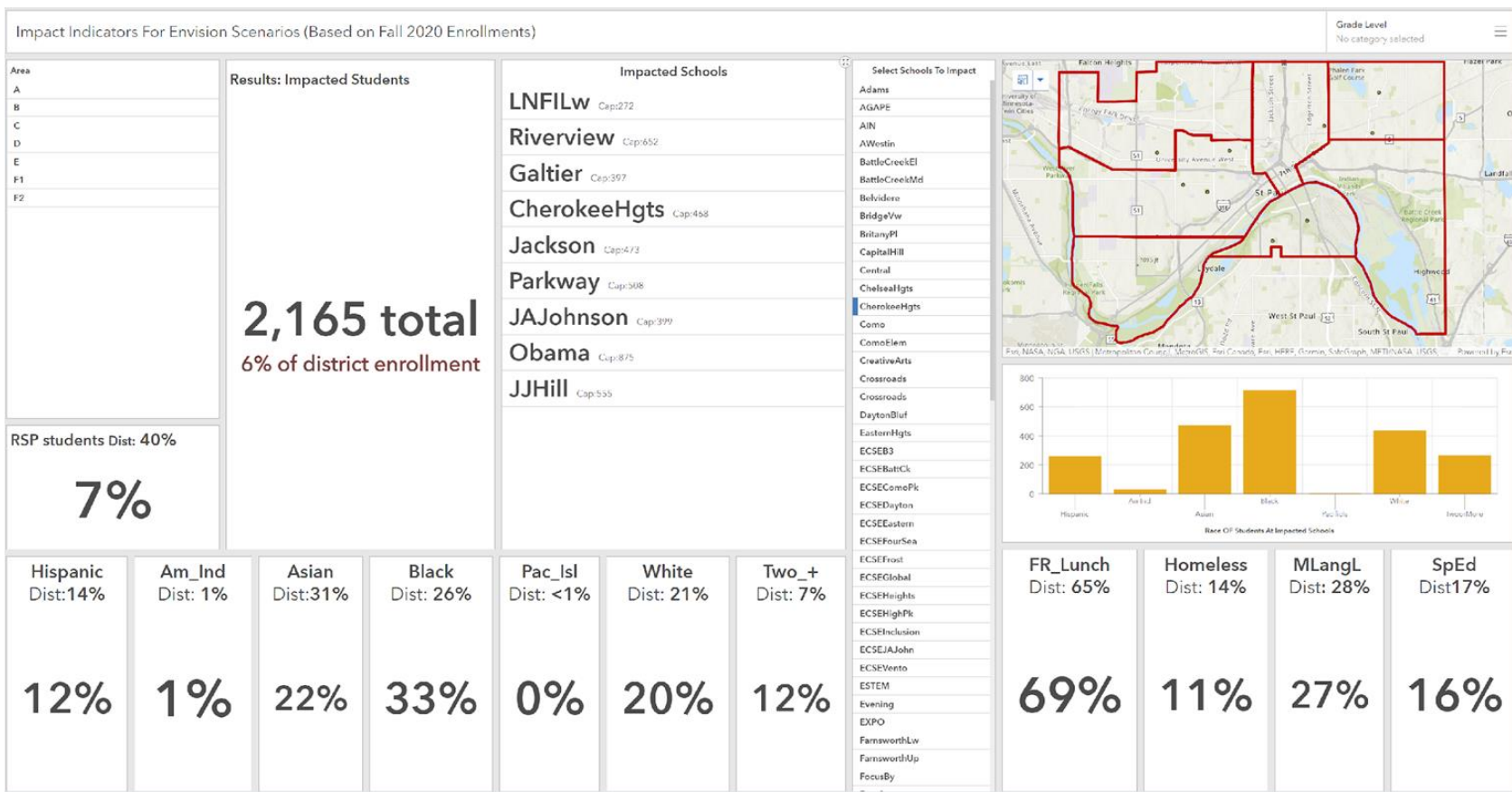
- Capitol Hill's pathway will be expanded from Highland Park High School to other high schools so that students pathway to their community high schools

Summary overview and systemic impact

Recommendations overview

- **11 school programs will have expanded or changed** due to parent requests or program consolidations
 - Bruce Vento
 - Cherokee
 - Galtier
 - Hamline
 - J.J. Hill
 - LNFI Lower
 - LNFI Upper
 - Maxfield
 - Parkway
 - Phalen
 - Riverview
- **1 high school pathway change** due to neighborhood expansion: Capitol Hill
- **6 sites** will be available for future programs, community partnerships, early childhood expansion or temporary space during construction, or other district needs
 - Galtier
 - Obama
 - J.A. Johnson
 - Jackson
 - J.J. Hill
 - LNFI Lower

Total Systemic Impact



**Recommended resolution
to adopt Envision SPPS**

School Closures:

At the end of school year 2021-22:

1. **Galtier Elementary School**, 1317 Charles Avenue, Saint Paul, MN 55104
2. **Jackson Preparatory Elementary School**, 437 Edmund Avenue, Saint Paul, MN 55103
3. **John A. Johnson Achievement Plus Elementary**, 740 York Avenue, Saint Paul, MN 55106
4. **L'Etoile du Nord French Immersion Lower**, 1305 Prosperity Avenue, Saint Paul, MN 55106
5. **Parkway Montessori and Community Middle School**, 1363 Bush Avenue, Saint Paul, MN 55106

At the end of school year 2022-23:

6. **Barack and Michelle Obama Elementary**, 707 Holly Avenue, Saint Paul, MN 55104

Board of Education: VOTE