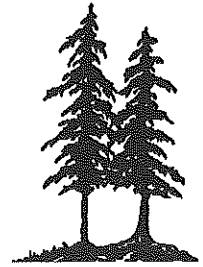


Midwest
Environmental
Consulting, L.L.C.



 Printed on Recycled Paper

**North End Elementary
Saint Paul Public Schools**

Lead-Based Paint Inspection

Inspection Dates: 2/6/97, 2/7/97

submitted to:

Saint Paul Public Schools

MEC Project # 62/0197D

38894 Llama Street NW * Dalbo, Minnesota 55017 * (612) 689-3612
fax (612) 689-5209

INTRODUCTION

At the request of Saint Paul Public Schools Environmental Safety Department, Midwest Environmental Consulting, L.L.C. (MEC), conducted a lead-based paint inspection at North End Elementary, 90 East Geranium, St. Paul, MN. The purpose of this inspection was to identify lead-based painted, varnished, or otherwise coated building components on the interior and exterior of the school building.

The inspection protocol incorporated applicable portions of the U.S. Department of Housing and Urban Development (HUD) *Guidelines for the Evaluation and Control of Lead-based Paint Hazards in Housing* (HUD Guidelines, June 1995) and OSHA 1926.62 requirements (Lead in Construction). The HUD guidelines are formulated to guide agencies in conducting random sampling of the interiors and exteriors of dwellings and common areas in public housing. The OSHA requirement is designed to minimize worker exposure when working with material containing lead.

Confirmatory testing was conducted when inconclusive XRF results were encountered. Inconclusive refers to XRF readings less than 0.2 mg/cm² (milligrams per square centimeter). Inconclusive results were confirmed with laboratory analysis of paint chip samples (Appendix B). This report contains a list of such results.

The United States Environmental Protection Agency defines "lead-based paint" as a paint or other surface coating that contains lead equal to or in excess of 1.0 milligrams per square centimeter when analyzed by XRF or more than 0.5% by weight (5000 parts per million) by laboratory analysis of a bulk sample.

Minnesota Department of Labor and Industry (MN OSHA) adopted the EPA lead levels for the purpose of enforcing OSHA 1926.62 federal regulations. Detection of lead in dried paint film by XRF is a dependable indicator of levels of lead and is accepted by MN OSHA.

For this Saint Paul Public Schools Lead Inspection, all building components were tested on site using a Niton XL® X-ray Fluorescence Spectrum Analyzer⁽¹⁾. Building components included walls, ceilings, floors, moldings, window and door components, door surfaces, and miscellaneous features such as shelves or bookcases. Only painted or glazed surfaces or surfaces which were varnished were tested. Suspended ceilings, structural steel, and corrugated decking were not included in the inspection. Neither anodized (e.g., window sashes) nor plastic (e.g., vinyl baseboard and vinyl mini-blinds) were included in the scope of this inspection.

⁽¹⁾ This is a portable hand held machine that can analyze building components instantly for lead concentrations.

Each building was divided into unique sites based on the year of construction or renovation. Portable classrooms, playgrounds, and other detached buildings were automatically designated as a unique site. Each site was inspected independently assuming differences in painting history and construction characteristics.

SITE DESCRIPTION AND BUILDING HISTORY

According to information provided to MEC by Saint Paul Public Schools, North End Elementary was constructed in essentially two phases. The initial phase includes the 55,320 square-foot older section of the building and dates from 1971. The second phase of 23,046 square feet dates from 1974. There are also two portable classrooms located on the east side of the building.

All room and area designations used in this report are depicted on sampling maps found in Appendix A.

XRF SAMPLE RESULTS TABLE

The results of all samples analyzed are listed in the table at the end of this section. The following is a description of the column headings:

- Site** Each school is divided into sites based on their unique construction characteristics. Each site has a unique date of construction or major renovation.

- Sample #** Each sample taken was given a unique number to identify the type and location of the sample. The sampling date is an integral part of the sample number.

- Analysis** This defines the type of analysis which can be categorized into two types:
 - 1) XRF: This is an on-site analysis using a hand held Niton XL® X-ray Fluorescence Spectrum Analyzer;
 - 2) Bulk or Chip: This is a bulk sample where paint is removed from the substrate and sent to a laboratory for analysis;

- Floor** This is the level of the building in which the area tested was found, example, 1 (first floor), 0 (basement), etc.

- Area** This further defines the specific functional space inspected such as a classroom, exterior, playground, gym, kitchen, etc.

- Room #** This is typically the actual number on the room as identified at the building.
- Component** Building “components” included walls, ceilings, floors, moldings, window and door components, door surfaces, and miscellaneous features such as shelves or bookcases.
- Feature** Identifies more detailed information of the component.
- Condition** This describes condition of the surface, whether it is intact, cracked, peeling, or chalking.
- Substrate** This refers to the material the building component is made of (wood, concrete, drywall, metal, etc.).
- Result** This is the analysis results for lead. Less than 1.0 mg/cm² or less than 0.5% by weight is considered to be non-lead and these building components are below the action levels of EPA and HUD. (All results are in mg/cm² except where noted.)

The table of results is designed for quick information on lead concentrations of tested building components. Generally, all repetitions of a test combination within a given room or area, may be assumed to contain similar concentrations of lead to that of the tested sample. For instance, the lead concentration of a tested wooden window sash was found to be above the action level of 1.0 mg/cm² in a given classroom. The classroom has five windows, all of wood, the same color and appearing to be of the same era. It can be assumed that the remaining four wooden window sashes each contain lead above the action limit.

Other columns identify the component and the component feature tested, condition of the component, type of substrate and the result of the analytical test.

As an example, the following illustration shows that the wooden door jamb in Room 123, first floor in the 1923 building section was in good, solid condition, and had an XRF test result of 0.3 mg/cm², which is below the action level.

Illustration Only

Site	Sample #	Date	Analysis	Floor	Area	Room #	Component	Feature	Condition	Substrate	Results
1923 Bldg.	52		XRF	1	Room	123	Door	Jamb	Solid	Wood	0.3

In a similar manner, the table shows that the plaster walls in room 23, on the second floor has peeling paint with more than 1.0 mg/cm² (shaded).

ILLUSTRATION ONLY

Site	Sample #	Date	Analysis	Floor	Area	Room #	Component	Feature	Condition	Substrate	Results
1910 Bldg.	16		XRF	2	Room	23	Door	Jamb	Peeling	Wood	0.25
1910 Bldg.	17		XRF	2	Room	23	Wall	Wall	Peeling	Plaster	1.2
1910 Bldg.	18		XRF	2	Room	23		Ceiling	Peeling	Plaster	0.25
1910 Bldg.	19		XRF	2	Room	23	Wall	Baseboard	Peeling	Wood	0.002

APPLICABLE REGULATIONS

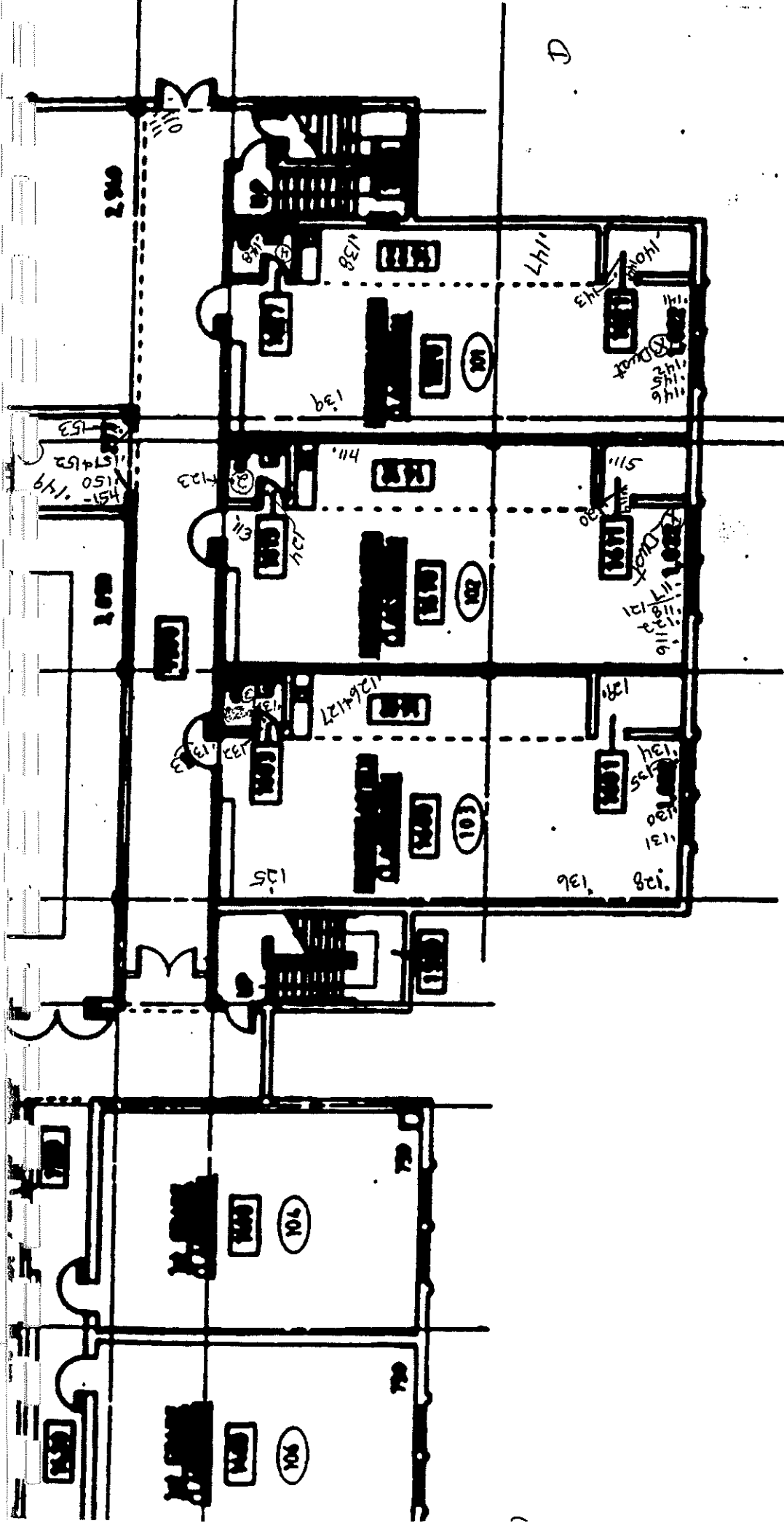
When building components test above 1.0 mg/cm² of lead by XRF or 0.5% lead by weight from laboratory analysis all employees and contractors who will be working with these components in a construction related activity must be notified. The requirements of OSHA 1926.62, Lead in Construction are enforceable. This regulation defines construction work as "work for construction, alteration and/or repair, including painting and decorating." This regulation further defines monitoring requirements to minimize employee exposure to lead during construction activities.

When work is performed on external painted building structures (i.e. flashing, fire escapes, playground equipment, handrails, etc.), regulations of the Minnesota Pollution Control Agency (MPCA) may also be applicable. For removal of lead based paint from steel structures, MN Rules 7025.0200 - 7025.0380 apply to steel materials on the exterior of a building, or on the property when levels exceed 0.5 mg/cm² based on the average of three XRF spectrum results of the sample tested, or 5,000 ppm by laboratory analysis. If it is other than a steel surface, then MPCA regulates the painted surfaces under MN Rules 7025.010 - 7025.0080, when surfaces are to be disturbed using abrasive blasting methods.

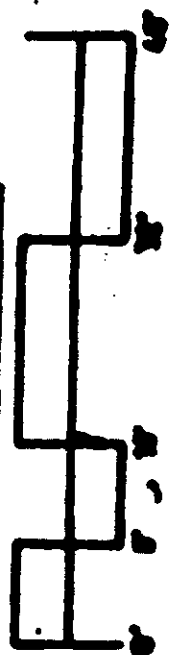
Please contact MEC directly if you have questions about any portion of this report or the lead-based paint inspection itself.

APPENDIX A

**XRF TESTING DATA
WITH
LOCATION MAPS**



FIRST FLOOR PLAN



2/6/97
 62/0197D
 Site 1

X

Saint Paul Public Schools
 North End Elementary
 Lead Based Paint Inspection

	A	B	C	D	E	F	G	H	I	J	K	L
1	North End Elementary School											
2												
3	Site	Sample #	Date	Analysis	Floor	Area	Room#	Component	Feature	Condition	Substrate	Results
4	1971 Bldg.	107	2/6/97	XRF	1	Cafeteria	0	Door	Door	Solid	Wood	0
5	1971 Bldg.	110	2/6/97	XRF	1	Cafeteria	0	Door	Door	Peeling	Metal	0.09
6	1971 Bldg.	111	2/6/97	XRF	1	Cafeteria	0	Door	Jamb	Solid	Metal	0.03
7	1971 Bldg.	112	2/6/97	XRF	1	Cafeteria	0	Door	Jamb	Solid	Metal	0
8	1971 Bldg.	105	2/6/97	XRF	1	Cafeteria	0	Wall	Wall	Solid	Concrte	0
9	1971 Bldg.	106	2/6/97	XRF	1	Cafeteria	0	Wall	Wall	Solid	Drywall	0.02
10	1971 Bldg.	109	2/6/97	XRF	1	Cafeteria	0	Window	Casing	Solid		0.01
11	1971 Bldg.	108	2/6/97	XRF	1	Cafeteria	0	Window	Sash	Solid	Metal	0.25
12	1971 Bldg.	145	2/6/97	XRF	1	Classroom	101	Cabinet	Door	Solid	Metal	0.01
13	1971 Bldg.	147	2/6/97	XRF	1	Classroom	101		Radiator	Peeling	Metal	0.12
14	1971 Bldg.	146	2/6/97	XRF	1	Classroom	101	Cabinet	Shelf	Solid	Metal	0.01
15	1971 Bldg.	140	2/6/97	XRF	1	Classroom	101	Closet	Wall	Solid	Concrte	0
16	1971 Bldg.	144	2/6/97	XRF	1	Classroom	101	Door	Casing	Solid	Metal	0.01
17	1971 Bldg.	143	2/6/97	XRF	1	Classroom	101	Door	Door	Solid	Wood	0
18	1971 Bldg.	138	2/6/97	XRF	1	Classroom	101	Wall	Wall	Solid	Concrte	0.01
19	1971 Bldg.	139	2/6/97	XRF	1	Classroom	101	Wall	Wall	Solid	Wood	0.01
20	1971 Bldg.	142	2/6/97	XRF	1	Classroom	101	Window	Casing	Peeling	Metal	0.01
21	1971 Bldg.	141	2/6/97	XRF	1	Classroom	101	Window	Sash	Solid	Metal	0.38
22	1971 Bldg.	121	2/6/97	XRF	1	Classroom	102	Cabinet	Door	Solid	Metal	0
23	1971 Bldg.	122	2/6/97	XRF	1	Classroom	102	Cabinet	Outside	Solid	Metal	0
24	1971 Bldg.	115	2/6/97	XRF	1	Classroom	102	Closet	Wall	Solid	Concrte	0
25	1971 Bldg.	120	2/6/97	XRF	1	Classroom	102	Door	Casing	Solid	Metal	0.01
26	1971 Bldg.	119	2/6/97	XRF	1	Classroom	102	Door	Door	Solid	Wood	0.01
27	1971 Bldg.	260	2/7/97	XRF	1	Classroom	102	Mini-blinds		Solid	Plastic	0.48
28	1971 Bldg.	113	2/6/97	XRF	1	Classroom	102	Wall	Wall	Solid	Concrte	0
29	1971 Bldg.	114	2/6/97	XRF	1	Classroom	102	Wall	Wall	Solid	Wood	0.02
30	1971 Bldg.	116	2/6/97	XRF	1	Classroom	102	Wall	Wall	Solid	Concrte	0
31	1971 Bldg.	118	2/6/97	XRF	1	Classroom	102	Window	Casing	Peeling	Metal	0.02
32	1971 Bldg.	117	2/6/97	XRF	1	Classroom	102	Window	Sash	Solid	Metal	0.15
33	1971 Bldg.	134	2/6/97	XRF	1	Classroom	103	Cabinet	Door	Solid	Metal	0
34	1971 Bldg.	136	2/6/97	XRF	1	Classroom	103		Radiator	Peeling	Metal	0.1
35	1971 Bldg.	135	2/6/97	XRF	1	Classroom	103	Cabinet	Shelf	Solid	Metal	0.02
36	1971 Bldg.	129	2/6/97	XRF	1	Classroom	103	Closet	Wall	Solid	Concrte	0.01
37	1971 Bldg.	133	2/6/97	XRF	1	Classroom	103	Door	Casing	Solid	Metal	0.01
38	1971 Bldg.	132	2/6/97	XRF	1	Classroom	103	Door	Door	Solid	Wood	0.01
39	1971 Bldg.	125	2/6/97	XRF	1	Classroom	103	Wall	Wall	Solid	Concrte	0
40	1971 Bldg.	126	2/6/97	XRF	1	Classroom	103	Wall	Wall	Solid	Wood	0.01
41	1971 Bldg.	127	2/6/97	XRF	1	Classroom	103	Wall	Wall	Solid		0.06
42	1971 Bldg.	128	2/6/97	XRF	1	Classroom	103	Wall	Wall	Solid	Drywall	0
43	1971 Bldg.	131	2/6/97	XRF	1	Classroom	103	Window	Casing	Peeling	Metal	0.01
44	1971 Bldg.	130	2/6/97	XRF	1	Classroom	103	Window	Sash	Solid	Metal	0.08
45	1971 Bldg.	201	2/6/97	XRF	1	Classroom	104	Cabinet	Door	Solid	Metal	0
46	1971 Bldg.	202	2/6/97	XRF	1	Classroom	104	Cabinet	Shelf	Solid	Metal	0.02
47	1971 Bldg.	199	2/6/97	XRF	1	Classroom	104	Door	Door	Solid	Wood	0.02
48	1971 Bldg.	200	2/6/97	XRF	1	Classroom	104	Door	Jamb	Solid	Metal	0.02
49	1971 Bldg.	194	2/6/97	XRF	1	Classroom	104	Wall	Wall	Solid	Concrte	0
50	1971 Bldg.	195	2/6/97	XRF	1	Classroom	104	Wall	Wall	Solid	Wood	0.01
51	1971 Bldg.	196	2/6/97	XRF	1	Classroom	104	Wall	Wall	Solid	Drywall	0
52	1971 Bldg.	198	2/6/97	XRF	1	Classroom	104	Window	Casing	Peeling	Metal	0.03
53	1971 Bldg.	197	2/6/97	XRF	1	Classroom	104	Window	Sash	Solid	Metal	0.16
54	1971 Bldg.	192	2/6/97	XRF	1	Classroom	105	Door	Door	Solid	Wood	0
55	1971 Bldg.	193	2/6/97	XRF	1	Classroom	105	Door	Jamb	Solid	Metal	0.03
56	1971 Bldg.	191	2/6/97	XRF	1	Classroom	105	Wall	Wall	Solid	Concrte	0
57	1971 Bldg.	211	2/6/97	XRF	1	Classroom	106	Cabinet	Door	Solid	Metal	0.02
58	1971 Bldg.	212	2/6/97	XRF	1	Classroom	106	Cabinet	Shelf	Solid	Metal	0.01
59	1971 Bldg.	210	2/6/97	XRF	1	Classroom	106	Door	Casing	Solid	Metal	0.02
60	1971 Bldg.	208	2/6/97	XRF	1	Classroom	106	Door	Door	Solid	Wood	0.01
61	1971 Bldg.	209	2/6/97	XRF	1	Classroom	106	Door	Door	Solid	Metal	0.03
62	1971 Bldg.	203	2/6/97	XRF	1	Classroom	106	Wall	Wall	Solid	Concrte	0.02
63	1971 Bldg.	204	2/6/97	XRF	1	Classroom	106	Wall	Wall	Solid	Wood	0.01
64	1971 Bldg.	205	2/6/97	XRF	1	Classroom	106	Wall	Wall	Solid	Drywall	0.01
65	1971 Bldg.	207	2/6/97	XRF	1	Classroom	106	Window	Casing	Solid	Metal	0.01
66	1971 Bldg.	206	2/6/97	XRF	1	Classroom	106	Window	Sash	Solid	Metal	0.26
67	1971 Bldg.	219	2/6/97	XRF	1	Classroom	107	Cabinet	Door	Solid	Metal	0.04
68	1971 Bldg.	220	2/6/97	XRF	1	Classroom	107	Cabinet	Shelf	Solid	Metal	0.02
69	1971 Bldg.	217	2/6/97	XRF	1	Classroom	107	Door	Casing	Solid	Metal	0.01

Saint Paul Public Schools
 North End Elementary
 Lead Based Paint Inspection

3	A	B	C	D	E	F	G	H	I	J	K	L
Site	Sample #	Date	Analysis	Floor	Area	Room#	Component	Feature	Condition	Substrate	Results	
70	1971 Bldg.	216	2/6/97	XRF	1	Classroom	107	Door	Door	Solid	Wood	0
71	1971 Bldg.	218	2/6/97	XRF	1	Classroom	107	Door	Door	Solid	Wood	0
72	1971 Bldg.	213	2/6/97	XRF	1	Classroom	107	Wall	Wall	Solid	Concrte	0.01
73	1971 Bldg.	214	2/6/97	XRF	1	Classroom	107	Wall	Wall	Solid	Concrte	0
74	1971 Bldg.	215	2/6/97	XRF	1	Classroom	107	Wall	Wall	Solid	Drywall	0
75	1971 Bldg.	225	2/6/97	XRF	1	Classroom	108	Door	Door	Solid	Wood	0
76	1971 Bldg.	221	2/6/97	XRF	1	Classroom	108	Wall	Wall	Solid	Wood	0.02
77	1971 Bldg.	222	2/6/97	XRF	1	Classroom	108	Wall	Wall	Solid	Concrte	0.01
78	1971 Bldg.	223	2/6/97	XRF	1	Classroom	108	Wall	Wall	Solid	Concrte	0.01
79	1971 Bldg.	224	2/6/97	XRF	1	Classroom	108	Window	Casing	Solid	Metal	0
80	1971 Bldg.	231	2/6/97	XRF	1	Classroom	109	Door	Door	Solid	Wood	0.01
81	1971 Bldg.	233	2/6/97	XRF	1	Classroom	109	Door	Door	Solid	Wood	0
82	1971 Bldg.	232	2/6/97	XRF	1	Classroom	109	Door	Jamb	Solid	Metal	0
83	1971 Bldg.	230	2/6/97	XRF	1	Classroom	109	Wall	Wall	Solid	Concrte	0
84	1971 Bldg.	229	2/6/97	XRF	1	Classroom	110	Door	Door	Solid	Wood	0
85	1971 Bldg.	226	2/6/97	XRF	1	Classroom	110	Wall	Wall	Solid	Concrte	0.1
86	1971 Bldg.	227	2/6/97	XRF	1	Classroom	110	Wall	Wall	Solid	Wood	0.03
87	1971 Bldg.	228	2/6/97	XRF	1	Classroom	110	Window	Casing	Solid	Metal	0.05
88	1971 Bldg.	239	2/6/97	XRF	1	Classroom	111	Cabinet	Door	Solid	Metal	0.02
89	1971 Bldg.	240	2/6/97	XRF	1	Classroom	111	Cabinet	Shelf	Solid	Metal	0.02
90	1971 Bldg.	237	2/6/97	XRF	1	Classroom	111	Door	Door	Solid	Wood	0.01
91	1971 Bldg.	238	2/6/97	XRF	1	Classroom	111	Door	Door	Solid	Wood	0
92	1971 Bldg.	236	2/6/97	XRF	1	Classroom	111	Door	Jamb	Solid	Metal	0.04
93	1971 Bldg.	234	2/6/97	XRF	1	Classroom	111	Wall	Wall	Solid	Concrte	0.02
94	1971 Bldg.	235	2/6/97	XRF	1	Classroom	111	Wall	Wall	Solid	Drywall	0
95	1971 Bldg.	80	2/6/97	XRF	1	Classroom	115	Door	Casing	Solid	Metal	0.01
96	1971 Bldg.	79	2/6/97	XRF	1	Classroom	115	Door	Door	Solid	Wood	0.01
97	1971 Bldg.	78	2/6/97	XRF	1	Classroom	115	Radiator	Peeling	Metal	0.15	
98	1971 Bldg.	77	2/6/97	XRF	1	Classroom	115	Wall	Wall	Solid	Concrte	0
99	1971 Bldg.	339	2/6/97	XRF	2	Classroom	202	Cabinet	Door	Solid	Metal	0.01
100	1971 Bldg.	340	2/6/97	XRF	2	Classroom	202	Cabinet	Shelf	Solid	Metal	0.03
101	1971 Bldg.	338	2/6/97	XRF	2	Classroom	202	Door	Casing	Solid	Metal	0.08
102	1971 Bldg.	337	2/6/97	XRF	2	Classroom	202	Door	Door	Solid	Wood	0
103	1971 Bldg.	332	2/6/97	XRF	2	Classroom	202	Wall	Wall	Solid	Concrte	0.03
104	1971 Bldg.	333	2/6/97	XRF	2	Classroom	202	Wall	Wall	Solid	Wood	0.01
105	1971 Bldg.	334	2/6/97	XRF	2	Classroom	202	Wall	Wall	Solid	0.01	
106	1971 Bldg.	336	2/6/97	XRF	2	Classroom	202	Window	Casing	Solid	Metal	0.01
107	1971 Bldg.	335	2/6/97	XRF	2	Classroom	202	Window	Sash	Solid	Metal	0.2
108	1971 Bldg.	354	2/6/97	XRF	2	Classroom	204	Cabinet	Door	Solid	Metal	0.02
109	1971 Bldg.	355	2/6/97	XRF	2	Classroom	204	Cabinet	Shelf	Solid	Metal	0.02
110	1971 Bldg.	351	2/6/97	XRF	2	Classroom	204	Door	Door	Solid	Wood	0
111	1971 Bldg.	353	2/6/97	XRF	2	Classroom	204	Door	Door	Solid	Wood	0.17
112	1971 Bldg.	352	2/6/97	XRF	2	Classroom	204	Door	Jamb	Solid	Metal	0.08
113	1971 Bldg.	349	2/6/97	XRF	2	Classroom	204	Wall	Wall	Solid	Concrte	0
114	1971 Bldg.	350	2/6/97	XRF	2	Classroom	204	Wall	Wall	Solid	Concrte	0.01
115	1971 Bldg.	361	2/6/97	XRF	2	Classroom	205	Cabinet	Door	Solid	Metal	0.02
116	1971 Bldg.	362	2/6/97	XRF	2	Classroom	205	Cabinet	Shelf	Solid	Metal	0.02
117	1971 Bldg.	363	2/6/97	XRF	2	Classroom	205	Cabinet	Shelf	Solid	0.02	
118	1971 Bldg.	360	2/6/97	XRF	2	Classroom	205	Door	Door	Solid	Wood	0
119	1971 Bldg.	359	2/6/97	XRF	2	Classroom	205	Door	Jamb	Solid	Metal	0
120	1971 Bldg.	356	2/6/97	XRF	2	Classroom	205	Wall	Wall	Solid	Concrte	0
121	1971 Bldg.	357	2/6/97	XRF	2	Classroom	205	Wall	Wall	Solid	Concrte	0.03
122	1971 Bldg.	358	2/6/97	XRF	2	Classroom	205	Window	Casing	Solid	Metal	0.19
123	1971 Bldg.	368	2/6/97	XRF	2	Classroom	206	Cabinet	Door	Solid	Metal	0
124	1971 Bldg.	369	2/6/97	XRF	2	Classroom	206	Cabinet	Shelf	Solid	Metal	0
125	1971 Bldg.	370	2/6/97	XRF	2	Classroom	206	Door	Door	Solid	Wood	0
126	1971 Bldg.	371	2/6/97	XRF	2	Classroom	206	Door	Jamb	Solid	Metal	0.23
127	1971 Bldg.	364	2/6/97	XRF	2	Classroom	206	Wall	Wall	Solid	Concrte	0.08
128	1971 Bldg.	365	2/6/97	XRF	2	Classroom	206	Wall	Wall	Solid	Wood	0.01
129	1971 Bldg.	367	2/6/97	XRF	2	Classroom	206	Window	Casing	Solid	Metal	0.01
130	1971 Bldg.	366	2/6/97	XRF	2	Classroom	206	Window	Sash	Solid	Metal	0.16
131	1971 Bldg.	376	2/6/97	XRF	2	Classroom	207	Cabinet	Door	Solid	Metal	0.01
132	1971 Bldg.	377	2/6/97	XRF	2	Classroom	207	Cabinet	Shelf	Solid	Metal	0
133	1971 Bldg.	378	2/6/97	XRF	2	Classroom	207	Door	Door	Solid	Wood	0
134	1971 Bldg.	379	2/6/97	XRF	2	Classroom	207	Door	Jamb	Solid	Metal	0
135	1971 Bldg.	372	2/6/97	XRF	2	Classroom	207	Wall	Wall	Solid	Concrte	0
136	1971 Bldg.	373	2/6/97	XRF	2	Classroom	207	Wall	Wall	Solid	Wood	0.11
137	1971 Bldg.	375	2/6/97	XRF	2	Classroom	207	Window	Casing	Solid	Metal	0.01

Saint Paul Public Schools
 North End Elementary
 Lead Based Paint Inspection

3	A	B	C	D	E	F	G	H	I	J	K	L
Site	Sample #	Date	Analysis	Floor	Area	Room#	Component	Feature	Condition	Substrate	Results	
138	1971 Bldg.	374	2/6/97	XRF	2	Classroom	207	Window	Sash	Solid	Metal	0.16
139	1971 Bldg.	258	2/6/97	XRF	2	Classroom	208	Cabinet	Door	Solid	Metal	0
140	1971 Bldg.	259	2/6/97	XRF	2	Classroom	208	Cabinet	Shelf	Solid	Metal	0.03
141	1971 Bldg.	257	2/6/97	XRF	2	Classroom	208	Door	Casing	Solid	Metal	0.01
142	1971 Bldg.	256	2/6/97	XRF	2	Classroom	208	Door	Door	Solid	Wood	0.01
143	1971 Bldg.	252	2/6/97	XRF	2	Classroom	208	Wall	Wall	Solid	Concrte	0
144	1971 Bldg.	253	2/6/97	XRF	2	Classroom	208	Wall	Wall	Solid	Wood	0
145	1971 Bldg.	255	2/6/97	XRF	2	Classroom	208	Window	Casing	Solid	Metal	0.01
146	1971 Bldg.	254	2/6/97	XRF	2	Classroom	208	Window	Sash	Solid	Metal	0.32
147	1971 Bldg.	271	2/6/97	XRF	2	Classroom	209	Cabinet	Door	Solid	Metal	0.02
148	1971 Bldg.	272	2/6/97	XRF	2	Classroom	209	Cabinet	Shelf	Solid	Metal	0
149	1971 Bldg.	270	2/6/97	XRF	2	Classroom	209	Door	Door	Solid	Wood	0.02
150	1971 Bldg.	269	2/6/97	XRF	2	Classroom	209	Door	Jamb	Solid	Metal	0.01
151	1971 Bldg.	265	2/6/97	XRF	2	Classroom	209	Wall	Wall	Solid	Concrte	0.02
152	1971 Bldg.	266	2/6/97	XRF	2	Classroom	209	Wall	Wall	Solid	Wood	0
153	1971 Bldg.	268	2/6/97	XRF	2	Classroom	209	Window	Casing	Solid	Metal	0.02
154	1971 Bldg.	267	2/6/97	XRF	2	Classroom	209	Window	Sash	Solid	Metal	0.12
155	1971 Bldg.	287	2/6/97	XRF	2	Classroom	210	Cabinet	Door	Solid	Metal	0
156	1971 Bldg.	288	2/6/97	XRF	2	Classroom	210	Cabinet	Shelf	Solid	Metal	0.01
157	1971 Bldg.	289	2/6/97	XRF	2	Classroom	210	Cabinet	Shelf	Solid	Metal	0.01
158	1971 Bldg.	286	2/6/97	XRF	2	Classroom	210	Door	Casing	Solid	Metal	0.01
159	1971 Bldg.	284	2/6/97	XRF	2	Classroom	210	Door	Door	Solid	Wood	0.01
160	1971 Bldg.	285	2/6/97	XRF	2	Classroom	210	Door	Door	Solid	Metal	0.04
161	1971 Bldg.	280	2/6/97	XRF	2	Classroom	210	Wall	Wall	Solid	Concrte	0
162	1971 Bldg.	281	2/6/97	XRF	2	Classroom	210	Wall	Wall	Solid	Concrte	0.01
163	1971 Bldg.	283	2/6/97	XRF	2	Classroom	210	Window	Casing	Solid	Metal	0.01
164	1971 Bldg.	282	2/6/97	XRF	2	Classroom	210	Window	Sash	Solid	Metal	0.21
165	1971 Bldg.	279	2/6/97	XRF	2	Classroom	211	Cabinet	Door	Solid	Plaster	0.09
166	1971 Bldg.	278	2/6/97	XRF	2	Classroom	211		Radiator	Solid	Metal	0.03
167	1971 Bldg.	277	2/6/97	XRF	2	Classroom	211	Closet	Wall	Solid	Concrte	0
168	1971 Bldg.	275	2/6/97	XRF	2	Classroom	211	Door	Casing	Solid	Metal	0.03
169	1971 Bldg.	276	2/6/97	XRF	2	Classroom	211	Door	Door	Solid	Wood	0
170	1971 Bldg.	273	2/6/97	XRF	2	Classroom	211	Wall	Wall	Solid	Concrte	0
171	1971 Bldg.	274	2/6/97	XRF	2	Classroom	211	Wall	Wall	Solid	Concrte	0
172	1971 Bldg.	178	2/7/97	XRF	1	Classroom	228	Wall	Wall	Solid	Wood	0.07
173	1971 Bldg.	245	2/6/97	XRF	1	Gym	0	Closet	Wall	Solid	Concrte	0.01
174	1971 Bldg.	246	2/6/97	XRF	1	Gym	0	Closet	Wall	Solid	Concrte	0
175	1971 Bldg.	185	2/6/97	XRF	1	Gym	0	Door	Door	Peeling	Wood	0
176	1971 Bldg.	188	2/6/97	XRF	1	Gym	0	Door	Door	Solid	Wood	0
177	1971 Bldg.	187	2/6/97	XRF	1	Gym	0	Door	Jamb	Solid	Metal	0.02
178	1971 Bldg.	184	2/6/97	XRF	1	Gym	0	Wall	Backboard	Solid	Metal	0.02
179	1971 Bldg.	182	2/6/97	XRF	1	Gym	0	Wall	Wall	Solid	Concrte	0.15
180	1971 Bldg.	183	2/6/97	XRF	1	Gym	0	Wall	Wall	Solid	Concrte	0.07
181	1971 Bldg.	188	2/6/97	XRF	1	Hall	1	Closet	Wall	Solid	Concrte	0
182	1971 Bldg.	189	2/6/97	XRF	1	Hall	1	Closet	Wall	Solid	Metal	0.43
183	1971 Bldg.	74	2/6/97	XRF	1	Hall	1	Door	Door	Solid	Metal	0.01
184	1971 Bldg.	190	2/6/97	XRF	1	Hall	1	Door	Door	Solid	Metal	0.03
185	1971 Bldg.	75	2/6/97	XRF	1	Hall	1	Door	Jamb	Solid	Metal	0.27
186	1971 Bldg.	76	2/6/97	XRF	1	Hall	1		Radiator	Solid	Metal	0
187	1971 Bldg.	47	2/6/97	XRF	1	Hall	1	Wall	Wall	Solid	Concrte	0
188	1971 Bldg.	48	2/6/97	XRF	1	Hall	1	Wall	Wall	Solid		0.01
189	1971 Bldg.	158	2/6/97	XRF	1	Hall	2	Door	Door	Solid	Metal	0.14
190	1971 Bldg.	161	2/6/97	XRF	1	Hall	2	Door	Door	Solid	Metal	0.47
191	1971 Bldg.	159	2/6/97	XRF	1	Hall	2	Door	Jamb	Solid	Metal	0.14
192	1971 Bldg.	160	2/6/97	XRF	1	Hall	2	Door	Jamb	Solid	Metal	0.02
193	1971 Bldg.	157	2/6/97	XRF	1	Hall	2	Wall	Baseboard	Solid	Concrte	0
194	1971 Bldg.	155	2/6/97	XRF	1	Hall	2	Wall	Wall	Solid	Concrte	0.01
195	1971 Bldg.	156	2/6/97	XRF	1	Hall	2	Wall	Wall	Solid	Concrte	0
196	1971 Bldg.	322	2/6/97	XRF	2	Hall	3		Radiator	Solid	Metal	0.04
197	1971 Bldg.	321	2/6/97	XRF	2	Hall	3	Closet	Wall	Solid	Concrte	0
198	1971 Bldg.	325	2/6/97	XRF	2	Hall	3	Door	Door	Solid	Metal	0.01
199	1971 Bldg.	326	2/6/97	XRF	2	Hall	3	Door	Jamb	Solid	Metal	0.02
200	1971 Bldg.	327	2/6/97	XRF	2	Hall	3		Radiator	Solid	Metal	0.01
201	1971 Bldg.	323	2/6/97	XRF	2	Hall	3	Wall	Wall	Solid	Concrte	0
202	1971 Bldg.	324	2/6/97	XRF	2	Hall	3	Wall	Wall	Solid	Concrte	0
203	1971 Bldg.	24	2/7/97	XRF	2	Hall	4	Closet	Casing	Solid	Metal	0.02
204	1971 Bldg.	23	2/7/97	XRF	2	Hall	4	Closet	Wall	Solid	Concrte	0
205	1971 Bldg.	21	2/7/97	XRF	2	Hall	4	Door	Door	Peeling	Metal	0.15

Saint Paul Public Schools
 North End Elementary
 Lead Based Paint Inspection

3	A	B	C	D	E	F	G	H	I	J	K	L
Site	Sample #	Date	Analysis	Floor	Area	Room#	Component	Feature	Condition	Substrate	Results	
206	1971 Bldg.	22	2/7/97	XRF	2	Hall	4	Door	Jamb	Solid	Metal	0.01
207	1971 Bldg.	17	2/7/97	XRF	2	Hall	4	Wall	Wall	Solid	Concrte	0
208	1971 Bldg.	18	2/7/97	XRF	2	Hall	4	Wall	Wall	Solid	Concrte	0
209	1971 Bldg.	19	2/7/97	XRF	2	Hall	4	Window	Casing	Solid	Metal	0
210	1971 Bldg.	20	2/7/97	XRF	2	Hall	4		Radiator	Solid	Metal	0
211	1971 Bldg.	84	2/6/97	XRF	1	Kitchen	0	Door	Casing	Solid	Metal	0.01
212	1971 Bldg.	85	2/6/97	XRF	1	Kitchen	0	Door	Casing	Solid	Metal	0.59
213	1971 Bldg.	86	2/6/97	XRF	1	Kitchen	0	Door	Door	Solid	Wood	0.01
214	1971 Bldg.	87	2/6/97	XRF	1	Kitchen	0	Door	Jamb	Solid	Metal	0.02
215	1971 Bldg.	88	2/6/97	XRF	1	Kitchen	0		Radiator	Solid	Metal	0.14
216	1971 Bldg.	89	2/6/97	XRF	1	Kitchen	0		Radiator	Solid	Metal	0.23
217	1971 Bldg.	81	2/6/97	XRF	1	Kitchen	0	Wall	Wall	Solid	Concrte	0.01
218	1971 Bldg.	82	2/6/97	XRF	1	Kitchen	0	Wall	Wall	Solid	Concrte	0.05
219	1971 Bldg.	83	2/6/97	XRF	1	Kitchen	0	Window	Sash	Solid	Metal	0.16
220	1971 Bldg.	16	2/7/97	XRF	2	Library	0	Closet	Casing	Solid	Metal	0.02
221	1971 Bldg.	15	2/7/97	XRF	2	Library	0	Closet	Wall	Solid	Concrte	0
222	1971 Bldg.	12	2/7/97	XRF	2	Library	0	Door	Casing	Solid	Metal	0.03
223	1971 Bldg.	13	2/7/97	XRF	2	Library	0		Column	Solid	Wood	0
224	1971 Bldg.	11	2/7/97	XRF	2	Library	0	Door	Door	Solid	Metal	0.01
225	1971 Bldg.	6	2/7/97	XRF	2	Library	0	Wall	Wall	Solid	Concrte	0
226	1971 Bldg.	7	2/7/97	XRF	2	Library	0	Wall	Wall	Solid		0
227	1971 Bldg.	8	2/7/97	XRF	2	Library	0	Wall	Wall	Solid	Wood	0.02
228	1971 Bldg.	14	2/7/97	XRF	2	Library	0	Wall	Wall	Solid	Wood	0
229	1971 Bldg.	9	2/7/97	XRF	2	Library	0	Window	Casing	Solid	Metal	0.02
230	1971 Bldg.	10	2/7/97	XRF	2	Library	0	Window	Casing	Solid	Metal	0.01
231	1971 Bldg.	46	2/6/97	XRF	1	Outside	0	Ceiling		Solid	Wood	0.11
232	1971 Bldg.	38	2/6/97	XRF	1	Outside	0	Door	Door	Peeling	Metal	0.48
233	1971 Bldg.	39	2/6/97	XRF	1	Outside	0	Door	Jamb	Peeling	Metal	0.01
234	1971 Bldg.	40	2/6/97	XRF	1	Outside	0	Door	Jamb	Peeling	Metal	0
235	1971 Bldg.	41	2/6/97	XRF	1	Outside	0	Door	Jamb	Solid	Metal	0
236	1971 Bldg.	42	2/6/97	XRF	1	Outside	0	Door	Jamb	Solid	Metal	0.03
237	1971 Bldg.	20	2/6/97	XRF	1	Outside	0	Stairs	Baseboard	Solid	Metal	0.13
238	1971 Bldg.	21	2/6/97	XRF	1	Outside	0	Stairs	Baseboard	Solid		0.05
239	1971 Bldg.	22	2/6/97	XRF	1	Outside	0	Stairs	Baseboard	Solid		0.11
240	1971 Bldg.	23	2/6/97	XRF	1	Outside	0	Stairs	Baseboard	Solid		0.01
241	1971 Bldg.	24	2/6/97	XRF	1	Outside	0	Stairs	Baseboard	Solid		0.03
242	1971 Bldg.	43	2/6/97	XRF	1	Outside	0	Stairs	Hand rail	Peeling	Metal	0.02
243	1971 Bldg.	45	2/6/97	XRF	1	Outside	0	Stairs	Hand rail	Solid	Plaster	0.04
244	1971 Bldg.	44	2/6/97	XRF	1	Outside	0	Stairs	Riser	Solid	Concrte	0.03
245	1971 Bldg.	35	2/6/97	XRF	1	Outside	0	Window	Sash	Peeling	Metal	0.01
246	1971 Bldg.	36	2/6/97	XRF	1	Outside	0	Window	Sash	Peeling		0.23
247	1971 Bldg.	37	2/6/97	XRF	1	Outside	0	Window	Sill	Solid	Metal	0.05
248	1971 Bldg.	97	2/6/97	XRF	1	Restroom	1	Door	Door	Solid	Wood	0
249	1971 Bldg.	98	2/6/97	XRF	1	Restroom	1	Door	Jamb	Solid	Metal	0.02
250	1971 Bldg.	99	2/6/97	XRF	1	Restroom	1	Door	Jamb	Solid	Metal	0.19
251	1971 Bldg.	96	2/6/97	XRF	1	Restroom	1	Wall	Wall	Solid	Concrte	0.01
252	1971 Bldg.	124	2/6/97	XRF	1	Restroom	2	Door	Door	Solid	Metal	0.01
253	1971 Bldg.	123	2/6/97	XRF	1	Restroom	2	Wall	Wall	Solid	Concrte	0.06
254	1971 Bldg.	148	2/6/97	XRF	1	Restroom	4	Wall	Wall	Solid	Concrte	0.04
255	1971 Bldg.	165	2/6/97	XRF	1	Restroom	5	Door	Door	Solid	Wood	0.01
256	1971 Bldg.	166	2/6/97	XRF	1	Restroom	5	Door	Jamb	Solid	Metal	0.02
257	1971 Bldg.	162	2/6/97	XRF	1	Restroom	5	Wall	Wall	Solid	Concrte	0.03
258	1971 Bldg.	163	2/6/97	XRF	1	Restroom	5	Wall	Wall	Solid	Concrte	0
259	1971 Bldg.	164	2/6/97	XRF	1	Restroom	5	Wall	Wall	Solid	Metal	0.12
260	1971 Bldg.	181	2/6/97	XRF	1	Restroom	6	Door	Casing	Solid	Metal	0.01
261	1971 Bldg.	180	2/6/97	XRF	1	Restroom	6	Door	Door	Solid	Wood	0.01
262	1971 Bldg.	177	2/6/97	XRF	1	Restroom	6	Wall	Wall	Solid	Concrte	0.06
263	1971 Bldg.	178	2/6/97	XRF	1	Restroom	6	Wall	Wall	Solid	Concrte	0.03
264	1971 Bldg.	179	2/6/97	XRF	1	Restroom	6	Wall	Wall	Solid	Metal	0.01
265	1971 Bldg.	295	2/6/97	XRF	2	Restroom	7		Radiator	Solid	Metal	0.13
266	1971 Bldg.	296	2/6/97	XRF	2	Restroom	7		Radiator	Solid	Metal	0.01
267	1971 Bldg.	294	2/6/97	XRF	2	Restroom	7	Wall	Wall	Solid	Concrte	0
268	1971 Bldg.	311	2/6/97	XRF	2	Restroom	8	Door	Door	Solid	Wood	0.01
269	1971 Bldg.	312	2/6/97	XRF	2	Restroom	8	Door	Jamb	Solid	Metal	0.01
270	1971 Bldg.	313	2/6/97	XRF	2	Restroom	8		Radiator	Solid	Metal	0.05
271	1971 Bldg.	309	2/6/97	XRF	2	Restroom	8	Wall	Wall	Solid	Concrte	0.04
272	1971 Bldg.	310	2/6/97	XRF	2	Restroom	8	Wall	Wall	Solid	Metal	0.08
273	1971 Bldg.	28	2/7/97	XRF	2	Restroom	9		Radiator	Solid	Metal	0.01

Saint Paul Public Schools
 North End Elementary
 Lead Based Paint Inspection

3	A	B	C	D	E	F	G	H	I	J	K	L
Site	Sample #	Date	Analysis	Floor	Area	Room#	Component	Feature	Condition	Substrate	Results	
274	1971 Bldg.	27	2/7/97	XRF	2	Restroom	9	Radiator	Solid	Metal	0.09	
275	1971 Bldg.	25	2/7/97	XRF	2	Restroom	9	Wall	Wall	Solid	Concrte	0.1
276	1971 Bldg.	26	2/7/97	XRF	2	Restroom	9	Wall	Wall	Solid	Concrte	0
277	1971 Bldg.	137	2/6/97	XRF	1	Restroom	33	Wall	Wall	Solid	Concrte	0.02
278	1971 Bldg.	319	2/6/97	XRF	2	Restroom	223	Cabinet	Door	Solid	Metal	0.01
279	1971 Bldg.	320	2/6/97	XRF	2	Restroom	223	Cabinet	Shelf	Solid	Metal	0.01
280	1971 Bldg.	316	2/6/97	XRF	2	Restroom	223	Door	Casing	Solid	Metal	0.02
281	1971 Bldg.	317	2/6/97	XRF	2	Restroom	223	Door	Door	Solid	Wood	0
282	1971 Bldg.	318	2/6/97	XRF	2	Restroom	223	Wall	Baseboard	Solid	Concrte	0
283	1971 Bldg.	314	2/6/97	XRF	2	Restroom	223	Wall	Wall	Solid		0
284	1971 Bldg.	315	2/6/97	XRF	2	Restroom	223	Wall	Wall	Solid	Concrte	0.02
285	1971 Bldg.	9	2/6/97	XRF	1	Room	1	Ceiling	Solid	Drywall	0.11	
286	1971 Bldg.	172	2/7/97	XRF	1	Room	1	Closet	Casing	Solid		4.02
287	1971 Bldg.	173	2/7/97	XRF	1	Room	1	Closet	Casing	Solid		0.3
288	1971 Bldg.	174	2/7/97	XRF	1	Room	1	Closet	Casing	Solid		0.03
289	1971 Bldg.	11	2/6/97	XRF	1	Room	1	Door	Casing	Solid	Metal	0.03
290	1971 Bldg.	12	2/6/97	XRF	1	Room	1	Door	Casing	Solid	Metal	0.24
291	1971 Bldg.	10	2/6/97	XRF	1	Room	1	Door	Door	Solid	Metal	0.01
292	1971 Bldg.	8	2/6/97	XRF	1	Room	1	Floor		Peeling	Concrte	0.01
293	1971 Bldg.	7	2/6/97	XRF	1	Room	1	Wall	Baseboard	Solid	Concrte	0
294	1971 Bldg.	6	2/6/97	XRF	1	Room	1	Wall	Wall	Solid	Concrte	0.01
295	1971 Bldg.	15	2/6/97	XRF	1	Room	2	Ceiling		Solid	Drywall	0.03
296	1971 Bldg.	16	2/6/97	XRF	1	Room	2	Door	Door	Solid	Metal	0.01
297	1971 Bldg.	17	2/6/97	XRF	1	Room	2	Door	Jamb	Solid		0.01
298	1971 Bldg.	14	2/6/97	XRF	1	Room	2	Floor	Wall	Peeling	Concrte	0
299	1971 Bldg.	18	2/6/97	XRF	1	Room	2	Stairs	Baseboard	Peeling	Metal	0.03
300	1971 Bldg.	19	2/6/97	XRF	1	Room	2	Stairs	Baseboard	Peeling		0.03
301	1971 Bldg.	13	2/6/97	XRF	1	Room	2	Wall	Wall	Solid		0.05
302	1971 Bldg.	71	2/6/97	XRF	1	Room	3	Door	Casing	Solid	Metal	0.02
303	1971 Bldg.	72	2/6/97	XRF	1	Room	3	Door	Casing	Solid		0.02
304	1971 Bldg.	73	2/6/97	XRF	1	Room	3	Door	Door	Solid	Wood	0.01
305	1971 Bldg.	69	2/6/97	XRF	1	Room	3	Wall	Wall	Solid	Concrte	0
306	1971 Bldg.	70	2/6/97	XRF	1	Room	3	Wall	Wall	Solid	Concrte	0
307	1971 Bldg.	92	2/6/97	XRF	1	Room	4	Door	Casing	Solid	Metal	0.01
308	1971 Bldg.	93	2/6/97	XRF	1	Room	4	Door	Casing	Solid	Metal	0.59
309	1971 Bldg.	94	2/6/97	XRF	1	Room	4	Door	Door	Peeling	Metal	0.01
310	1971 Bldg.	95	2/6/97	XRF	1	Room	4	Door	Jamb	Solid	Metal	0.01
311	1971 Bldg.	90	2/6/97	XRF	1	Room	4	Wall	Wall	Solid	Concrte	0
312	1971 Bldg.	100	2/6/97	XRF	1	Room	4	Window	Apron	Solid		0
313	1971 Bldg.	91	2/6/97	XRF	1	Room	4	Window	Sash	Peeling	Metal	0.14
314	1971 Bldg.	103	2/6/97	XRF	1	Room	5	Door	Casing	Solid	Metal	0.04
315	1971 Bldg.	104	2/6/97	XRF	1	Room	5	Door	Casing	Solid		0.03
316	1971 Bldg.	102	2/6/97	XRF	1	Room	5	Door	Door	Solid	Wood	0.01
317	1971 Bldg.	101	2/6/97	XRF	1	Room	5	Wall	Wall	Solid	Concrte	0
318	1971 Bldg.	150	2/6/97	XRF	1	Room	6	Door	Door	Solid	Wood	0.01
319	1971 Bldg.	153	2/6/97	XRF	1	Room	6	Door	Door	Solid	Metal	0.01
320	1971 Bldg.	154	2/6/97	XRF	1	Room	6	Door	Door	Solid	Metal	0.3
321	1971 Bldg.	151	2/6/97	XRF	1	Room	6	Door	Jamb	Solid	Metal	0.03
322	1971 Bldg.	152	2/6/97	XRF	1	Room	6	Door	Jamb	Solid		0.01
323	1971 Bldg.	149	2/6/97	XRF	1	Room	6	Wall	Wall	Solid	Concrte	0
324	1971 Bldg.	242	2/6/97	XRF	1	Room	7	Door	Casing	Solid	Metal	0.01
325	1971 Bldg.	243	2/6/97	XRF	1	Room	7	Door	Door	Solid	Wood	0
326	1971 Bldg.	244	2/6/97	XRF	1	Room	7	Door	Door	Solid	Metal	0.26
327	1971 Bldg.	241	2/6/97	XRF	1	Room	7	Wall	Wall	Solid	Concrte	0.01
328	1971 Bldg.	263	2/6/97	XRF	2	Room	8	Cabinet	Door	Solid	Wood	0.01
329	1971 Bldg.	264	2/6/97	XRF	2	Room	8	Cabinet	Shelf	Solid	Wood	0
330	1971 Bldg.	261	2/6/97	XRF	2	Room	8	Door	Door	Solid	Wood	0.01
331	1971 Bldg.	262	2/6/97	XRF	2	Room	8	Door	Jamb	Solid	Metal	0.01
332	1971 Bldg.	260	2/6/97	XRF	2	Room	8	Wall	Wall	Solid	Concrte	0
333	1971 Bldg.	293	2/6/97	XRF	2	Room	9	Door	Casing	Solid	Metal	0.01
334	1971 Bldg.	292	2/6/97	XRF	2	Room	9	Door	Door	Solid	Wood	0.01
335	1971 Bldg.	290	2/6/97	XRF	2	Room	9	Wall	Wall	Solid	Concrte	0
336	1971 Bldg.	291	2/6/97	XRF	2	Room	9	Wall	Wall	Solid	Concrte	0.04
337	1971 Bldg.	302	2/6/97	XRF	2	Room	10	Door	Door	Solid	Wood	0
338	1971 Bldg.	303	2/6/97	XRF	2	Room	10	Door	Jamb	Solid	Metal	0.01
339	1971 Bldg.	297	2/6/97	XRF	2	Room	10	Wall	Wall	Solid	Concrte	0.06
340	1971 Bldg.	299	2/6/97	XRF	2	Room	10	Window	Casing	Solid	Metal	0.01
341	1971 Bldg.	300	2/6/97	XRF	2	Room	10	Window	Casing	Solid	Metal	0.02

Saint Paul Public Schools
 North End Elementary
 Lead Based Paint Inspection

3	A	B	C	D	E	F	G	H	I	J	K	L
Site	Sample #	Date	Analysis	Floor	Area	Room#	Component	Feature	Condition	Substrate	Results	
342	1971 Bldg.	301	2/6/97	XRF	2	Room	10	Radiator	Peeling	Metal	0.08	
343	1971 Bldg.	298	2/6/97	XRF	2	Room	10	Window	Sash	Solid	Metal	0.15
344	1971 Bldg.	307	2/6/97	XRF	2	Room	11	Door	Door	Solid	Wood	0.03
345	1971 Bldg.	308	2/6/97	XRF	2	Room	11	Door	Jamb	Solid	Wood	0
346	1971 Bldg.	304	2/6/97	XRF	2	Room	11	Wall	Wall	Solid	Concrte	0
347	1971 Bldg.	305	2/6/97	XRF	2	Room	11	Wall	Wall	Solid	Concrte	0.01
348	1971 Bldg.	306	2/6/97	XRF	2	Room	11	Window	Casing	Solid	Metal	0.01
349	1971 Bldg.	56	2/6/97	XRF	1	Room	112	Cabinet	Door	Solid	Metal	0.01
350	1971 Bldg.	57	2/6/97	XRF	1	Room	112	Cabinet	Shelf	Solid	Metal	0.01
351	1971 Bldg.	54	2/6/97	XRF	1	Room	112	Door	Door	Cracked	Wood	0.01
352	1971 Bldg.	55	2/6/97	XRF	1	Room	112	Door	Jamb	Solid	Metal	0.01
353	1971 Bldg.	49	2/6/97	XRF	1	Room	112	Wall	Wall	Solid	Concrte	0
354	1971 Bldg.	50	2/6/97	XRF	1	Room	112	Wall	Wall	Solid	Wood	0.01
355	1971 Bldg.	51	2/6/97	XRF	1	Room	112	Wall	Wall	Solid	Drywall	0
356	1971 Bldg.	53	2/6/97	XRF	1	Room	112	Window	Casing	Cracked	Metal	0.01
357	1971 Bldg.	52	2/6/97	XRF	1	Room	112	Window	Sash	Peeling	Metal	0.17
358	1971 Bldg.	67	2/6/97	XRF	1	Room	113	Cabinet	Door	Solid	Metal	0
359	1971 Bldg.	68	2/6/97	XRF	1	Room	113	Cabinet	Shelf	Solid	Metal	0.01
360	1971 Bldg.	64	2/6/97	XRF	1	Room	113	Door	Door	Solid	Wood	0.02
361	1971 Bldg.	65	2/6/97	XRF	1	Room	113	Door	Door	Solid	Metal	0.03
362	1971 Bldg.	66	2/6/97	XRF	1	Room	113	Door	Jamb	Cracked	Metal	0.03
363	1971 Bldg.	58	2/6/97	XRF	1	Room	113	Wall	Wall	Solid	Concrte	0
364	1971 Bldg.	59	2/6/97	XRF	1	Room	113	Wall	Wall	Solid	Concrte	0
365	1971 Bldg.	60	2/6/97	XRF	1	Room	113	Wall	Wall	Solid	Drywall	0.06
366	1971 Bldg.	61	2/6/97	XRF	1	Room	113	Wall	Wall	Solid	Wood	0.01
367	1971 Bldg.	63	2/6/97	XRF	1	Room	113	Window	Casing	Peeling	Metal	0.01
368	1971 Bldg.	62	2/6/97	XRF	1	Room	113	Window	Sash	Solid	Metal	0.26
369	1971 Bldg.	345	2/6/97	XRF	2	Room	203	Cabinet	Door	Solid	Metal	0.02
370	1971 Bldg.	346	2/6/97	XRF	2	Room	203	Cabinet	Shelf	Solid	Metal	0.01
371	1971 Bldg.	348	2/6/97	XRF	2	Room	203	Door	Door	Solid	Wood	0
372	1971 Bldg.	341	2/6/97	XRF	2	Room	203	Wall	Wall	Solid	Concrte	0.1
373	1971 Bldg.	342	2/6/97	XRF	2	Room	203	Wall	Wall	Solid	Wood	0.01
374	1971 Bldg.	344	2/6/97	XRF	2	Room	203	Window	Casing	Solid	Metal	0
375	1971 Bldg.	347	2/6/97	XRF	2	Room	203	Window	Casing	Solid	Metal	0.02
376	1971 Bldg.	343	2/6/97	XRF	2	Room	203	Window	Sash	Solid	Metal	0.22
377	1971 Bldg.	249	2/6/97	XRF	2	Stairwell	1	Door	Door	Solid	Metal	0.01
378	1971 Bldg.	251	2/6/97	XRF	2	Stairwell	1	Door	Jamb	Solid	Metal	0.01
379	1971 Bldg.	247	2/6/97	XRF	1	Stairwell	1	Stairs	Baseboard	Cracked	Metal	0.02
380	1971 Bldg.	250	2/6/97	XRF	2	Stairwell	1	Stairs	Hand rail	Solid	Metal	0.02
381	1971 Bldg.	248	2/6/97	XRF	1	Stairwell	1	Wall	Wall	Solid	Concrte	0
382	1971 Bldg.	331	2/6/97	XRF	2	Stairwell	2	Stairs	Baseboard	Solid	Metal	0.01
383	1971 Bldg.	330	2/6/97	XRF	2	Stairwell	2	Stairs	Hand rail	Solid	Metal	0.01
384	1971 Bldg.	328	2/6/97	XRF	2	Stairwell	2	Wall	Wall	Solid	Concrte	0.01
385	1971 Bldg.	329	2/6/97	XRF	2	Stairwell	2	Wall	Wall	Solid	Concrte	0.05
386	1974 Bldg.	135	2/7/97	XRF	1	Classroom	120	Cabinet	Door	Solid	Wood	0.02
387	1974 Bldg.	136	2/7/97	XRF	1	Classroom	120	Cabinet	Shelf	Solid	Metal	0.02
388	1974 Bldg.	134	2/7/97	XRF	1	Classroom	120	Door	Door	Solid	Wood	0
389	1974 Bldg.	133	2/7/97	XRF	1	Classroom	120	Door	Jamb	Solid	Metal	0
390	1974 Bldg.	131	2/7/97	XRF	1	Classroom	120	Wall	Wall	Solid	Wood	0.01
391	1974 Bldg.	132	2/7/97	XRF	1	Classroom	120	Wall	Wall	Solid	Concrte	0
392	1974 Bldg.	128	2/7/97	XRF	1	Classroom	121	Cabinet	Door	Solid	Metal	0.01
393	1974 Bldg.	130	2/7/97	XRF	1	Classroom	121	Door	Door	Solid	Wood	0
394	1974 Bldg.	129	2/7/97	XRF	1	Classroom	121	Door	Jamb	Solid	Metal	0.02
395	1974 Bldg.	123	2/7/97	XRF	1	Classroom	121	Wall	Wall	Solid	Concrte	0.03
396	1974 Bldg.	124	2/7/97	XRF	1	Classroom	121	Wall	Wall	Solid	Drywall	0
397	1974 Bldg.	126	2/7/97	XRF	1	Classroom	121	Window	Casing	Solid	Metal	0.08
398	1974 Bldg.	127	2/7/97	XRF	1	Classroom	121	Window	Casing	Solid	Wood	0.08
399	1974 Bldg.	125	2/7/97	XRF	1	Classroom	121	Window	Sash	Solid	Metal	0
400	1974 Bldg.	120	2/7/97	XRF	1	Classroom	122	Cabinet	Shelf	Solid	Metal	0.02
401	1974 Bldg.	118	2/7/97	XRF	1	Classroom	122	Door	Casing	Solid	Metal	0.16
402	1974 Bldg.	119	2/7/97	XRF	1	Classroom	122	Door	Casing	Solid	Wood	0.01
403	1974 Bldg.	122	2/7/97	XRF	1	Classroom	122	Door	Door	Solid	Wood	0
404	1974 Bldg.	121	2/7/97	XRF	1	Classroom	122	Door	Jamb	Solid	Metal	0
405	1974 Bldg.	116	2/7/97	XRF	1	Classroom	122	Wall	Baseboard	Solid	Concrte	0.02
406	1974 Bldg.	114	2/7/97	XRF	1	Classroom	122	Wall	Wall	Solid	Concrte	0
407	1974 Bldg.	115	2/7/97	XRF	1	Classroom	122	Wall	Wall	Solid	Wood	0
408	1974 Bldg.	117	2/7/97	XRF	1	Classroom	122	Window	Sash	Peeling	Metal	0
409	1974 Bldg.	111	2/7/97	XRF	1	Classroom	123	Cabinet	Door	Solid	Metal	0.01

Saint Paul Public Schools
 North End Elementary
 Lead Based Paint Inspection

3	A	B	C	D	E	F	G	H	I	J	K	L
Site	Sample #	Date	Analysis	Floor	Area	Room#	Component	Feature	Condition	Substrate	Results	
410	1974 Bldg.	112	2/7/97	XRF	1	Classroom	123	Door	Door	Solid	Wood	0
411	1974 Bldg.	113	2/7/97	XRF	1	Classroom	123	Door	Jamb	Solid	Metal	0
412	1974 Bldg.	107	2/7/97	XRF	1	Classroom	123	Wall	Wall	Solid	Drywall	0.01
413	1974 Bldg.	108	2/7/97	XRF	1	Classroom	123	Wall	Wall	Solid	Concrte	0
414	1974 Bldg.	110	2/7/97	XRF	1	Classroom	123	Window	Casing	Peeling	Metal	0.01
415	1974 Bldg.	109	2/7/97	XRF	1	Classroom	123	Window	Sash	Solid	Metal	0.28
416	1974 Bldg.	104	2/7/97	XRF	1	Classroom	124	Cabinet	Shelf	Solid	Metal	0
417	1974 Bldg.	106	2/7/97	XRF	1	Classroom	124	Door	Door	Solid	Wood	0
418	1974 Bldg.	105	2/7/97	XRF	1	Classroom	124	Door	Jamb	Solid	Metal	0.01
419	1974 Bldg.	100	2/7/97	XRF	1	Classroom	124	Wall	Wall	Solid	Wood	0
420	1974 Bldg.	101	2/7/97	XRF	1	Classroom	124	Wall	Wall	Solid	Concrte	0
421	1974 Bldg.	103	2/7/97	XRF	1	Classroom	124	Window	Casing	Peeling	Metal	0.02
422	1974 Bldg.	102	2/7/97	XRF	1	Classroom	124	Window	Sash	Solid	Metal	0.23
423	1974 Bldg.	99	2/7/97	XRF	1	Classroom	125	Cabinet	Door	Solid	Metal	0.01
424	1974 Bldg.	93	2/7/97	XRF	1	Classroom	125	Cabinet	Shelf	Solid	Drywall	0.02
425	1974 Bldg.	97	2/7/97	XRF	1	Classroom	125	Door	Casing	Solid	Metal	0.03
426	1974 Bldg.	98	2/7/97	XRF	1	Classroom	125	Door	Door	Solid	Wood	0
427	1974 Bldg.	94	2/7/97	XRF	1	Classroom	125	Wall	Wall	Solid	Concrte	0
428	1974 Bldg.	96	2/7/97	XRF	1	Classroom	125	Window	Casing	Peeling	Metal	0.01
429	1974 Bldg.	95	2/7/97	XRF	1	Classroom	125	Window	Sash	Solid	Metal	0.17
430	1974 Bldg.	92	2/7/97	XRF	1	Classroom	126	Cabinet	Shelf	Solid	Metal	0.02
431	1974 Bldg.	90	2/7/97	XRF	1	Classroom	126	Door	Door	Solid	Wood	0
432	1974 Bldg.	91	2/7/97	XRF	1	Classroom	126	Door	Jamb	Solid	Metal	0.01
433	1974 Bldg.	86	2/7/97	XRF	1	Classroom	126	Wall	Wall	Solid	Wood	0.02
434	1974 Bldg.	87	2/7/97	XRF	1	Classroom	126	Wall	Wall	Solid	Concrte	0.02
435	1974 Bldg.	89	2/7/97	XRF	1	Classroom	126	Window	Casing	Peeling	Metal	0.01
436	1974 Bldg.	88	2/7/97	XRF	1	Classroom	126	Window	Sash	Solid	Metal	0.19
437	1974 Bldg.	84	2/7/97	XRF	1	Classroom	127	Cabinet	Door	Solid	Metal	0.02
438	1974 Bldg.	85	2/7/97	XRF	1	Classroom	127	Cabinet	Door	Solid	Wood	0
439	1974 Bldg.	83	2/7/97	XRF	1	Classroom	127	Door	Casing	Peeling	Metal	0.02
440	1974 Bldg.	82	2/7/97	XRF	1	Classroom	127	Door	Door	Solid	Wood	0
441	1974 Bldg.	78	2/7/97	XRF	1	Classroom	127	Wall	Wall	Solid	Concrte	0
442	1974 Bldg.	79	2/7/97	XRF	1	Classroom	127	Wall	Wall	Solid	Drywall	0
443	1974 Bldg.	81	2/7/97	XRF	1	Classroom	127	Window	Casing	Solid	Metal	0.07
444	1974 Bldg.	80	2/7/97	XRF	1	Classroom	127	Window	Sash	Solid	Metal	0
445	1974 Bldg.	76	2/7/97	XRF	1	Classroom	128	Cabinet	Door	Solid	Metal	0.02
446	1974 Bldg.	77	2/7/97	XRF	1	Classroom	128	Cabinet	Shelf	Solid	Metal	0.02
447	1974 Bldg.	74	2/7/97	XRF	1	Classroom	128	Door	Casing	Solid	Metal	0.01
448	1974 Bldg.	73	2/7/97	XRF	1	Classroom	128	Door	Door	Solid	Wood	0
449	1974 Bldg.	75	2/7/97	XRF	1	Classroom	128	Window	Panel	Solid	Wood	0
450	1974 Bldg.	70	2/7/97	XRF	1	Classroom	128	Wall	Middle Wall	Solid	Drywall	0
451	1974 Bldg.	68	2/7/97	XRF	1	Classroom	128	Wall	Wall	Solid	Wood	0
452	1974 Bldg.	69	2/7/97	XRF	1	Classroom	128	Wall	Wall	Solid	Concrte	0.03
453	1974 Bldg.	72	2/7/97	XRF	1	Classroom	128	Window	Casing	Solid	Metal	0.15
454	1974 Bldg.	71	2/7/97	XRF	1	Classroom	128	Window	Sash	Solid	Metal	0.01
455	1974 Bldg.	62	2/7/97	XRF	1	Classroom	129	Door	Door	Solid	Wood	0
456	1974 Bldg.	61	2/7/97	XRF	1	Classroom	129	Door	Jamb	Solid	Metal	0
457	1974 Bldg.	58	2/7/97	XRF	1	Classroom	129	Wall	Wall	Solid	Concrte	0.03
458	1974 Bldg.	59	2/7/97	XRF	1	Classroom	129	Wall	Wall	Solid	Drywall	0
459	1974 Bldg.	60	2/7/97	XRF	1	Classroom	129	Wall	Wall	Solid	Wood	0.09
460	1974 Bldg.	67	2/7/97	XRF	1	Classroom	129	Wall	Wall	Solid	Drywall	0.02
461	1974 Bldg.	243	2/7/97	XRF	2	Classroom	220	Cabinet	Shelf	Solid	Metal	0.02
462	1974 Bldg.	242	2/7/97	XRF	2	Classroom	220	Door	Door	Solid	Wood	0
463	1974 Bldg.	241	2/7/97	XRF	2	Classroom	220	Door	Jamb	Solid	Metal	0
464	1974 Bldg.	240	2/7/97	XRF	2	Classroom	220	Wall	Middle Wall	Solid	Concrte	0.02
465	1974 Bldg.	239	2/7/97	XRF	2	Classroom	220	Wall	Wall	Solid	Drywall	0.04
466	1974 Bldg.	236	2/7/97	XRF	2	Classroom	221	Cabinet	Door	Solid	Metal	0.01
467	1974 Bldg.	238	2/7/97	XRF	2	Classroom	221	Door	Door	Solid	Wood	0
468	1974 Bldg.	237	2/7/97	XRF	2	Classroom	221	Door	Jamb	Solid	Metal	0.07
469	1974 Bldg.	235	2/7/97	XRF	2	Classroom	221	Window	Panel	Solid	Metal	0.02
470	1974 Bldg.	230	2/7/97	XRF	2	Classroom	221	Wall	Wall	Solid	Drywall	0
471	1974 Bldg.	231	2/7/97	XRF	2	Classroom	221	Wall	Wall	Solid	Concrte	0
472	1974 Bldg.	234	2/7/97	XRF	2	Classroom	221	Window	Casing	Peeling	Metal	0.18
473	1974 Bldg.	232	2/7/97	XRF	2	Classroom	221	Window	Sash	Peeling	Metal	0.13
474	1974 Bldg.	233	2/7/97	XRF	2	Classroom	221	Window	Sash	Peeling	Metal	0.01
475	1974 Bldg.	224	2/7/97	XRF	2	Classroom	222	Cabinet	Shelf	Cracked	Metal	0.02
476	1974 Bldg.	228	2/7/97	XRF	2	Classroom	222	Door	Jamb	Solid	Metal	0.03
477	1974 Bldg.	229	2/7/97	XRF	2	Classroom	222	Door	Jamb	Solid	Wood	0

Saint Paul Public Schools
 North End Elementary
 Lead Based Paint Inspection

3	A	B	C	D	E	F	G	H	I	J	K	L
Site	Sample #	Date	Analysis	Floor	Area	Room#	Component	Feature	Condition	Substrate	Results	
478	1974 Bldg.	227	2/7/97	XRF	2	Classroom	222	Window	Panel	Solid	Metal	0
479	1974 Bldg.	222	2/7/97	XRF	2	Classroom	222	Wall	Wall	Peeling	Concrte	0
480	1974 Bldg.	223	2/7/97	XRF	2	Classroom	222	Wall	Wall	Cracked	Concrte	0
481	1974 Bldg.	226	2/7/97	XRF	2	Classroom	222	Window	Casing	Solid	Metal	0.22
482	1974 Bldg.	225	2/7/97	XRF	2	Classroom	222	Window	Sash	Peeling	Metal	0
483	1974 Bldg.	219	2/7/97	XRF	2	Classroom	223	Cabinet	Door	Solid	Metal	0.02
484	1974 Bldg.	221	2/7/97	XRF	2	Classroom	223	Door	Door	Solid	Wood	0
485	1974 Bldg.	220	2/7/97	XRF	2	Classroom	223	Door	Jamb	Solid	Metal	0.06
486	1974 Bldg.	216	2/7/97	XRF	2	Classroom	223	Wall	Midle Wall	Solid	Concrte	0
487	1974 Bldg.	215	2/7/97	XRF	2	Classroom	223	Wall	Wall	Solid	Wood	0.02
488	1974 Bldg.	218	2/7/97	XRF	2	Classroom	223	Window	Casing	Peeling	Metal	0.02
489	1974 Bldg.	217	2/7/97	XRF	2	Classroom	223	Window	Sash	Solid	Metal	0.16
490	1974 Bldg.	212	2/7/97	XRF	2	Classroom	224	Cabinet	Shelf	Solid	Metal	0.03
491	1974 Bldg.	213	2/7/97	XRF	2	Classroom	224	Door	Casing	Solid	Metal	0
492	1974 Bldg.	214	2/7/97	XRF	2	Classroom	224	Door	Door	Solid	Wood	0
493	1974 Bldg.	209	2/7/97	XRF	2	Classroom	224	Wall	Midle Wall	Solid	Concrte	0.01
494	1974 Bldg.	208	2/7/97	XRF	2	Classroom	224	Wall	Wall	Solid	Drywall	0
495	1974 Bldg.	211	2/7/97	XRF	2	Classroom	224	Window	Casing	Solid	Metal	0.01
496	1974 Bldg.	210	2/7/97	XRF	2	Classroom	224	Window	Sash	Solid	Metal	0.15
497	1974 Bldg.	205	2/7/97	XRF	2	Classroom	225	Cabinet	Door	Solid	Metal	0.03
498	1974 Bldg.	207	2/7/97	XRF	2	Classroom	225	Door	Door	Solid	Wood	0
499	1974 Bldg.	206	2/7/97	XRF	2	Classroom	225	Door	Jamb	Solid	Metal	0.02
500	1974 Bldg.	201	2/7/97	XRF	2	Classroom	225	Wall	Wall	Solid	Wood	0
501	1974 Bldg.	202	2/7/97	XRF	2	Classroom	225	Wall	Wall	Solid	Concrte	0
502	1974 Bldg.	204	2/7/97	XRF	2	Classroom	225	Window	Casing	Peeling	Metal	0.01
503	1974 Bldg.	203	2/7/97	XRF	2	Classroom	225	Window	Sash	Solid	Metal	0.23
504	1974 Bldg.	198	2/7/97	XRF	2	Classroom	226	Cabinet	Shelf	Solid	Metal	0.03
505	1974 Bldg.	200	2/7/97	XRF	2	Classroom	226	Door	Door	Solid	Wood	0
506	1974 Bldg.	199	2/7/97	XRF	2	Classroom	226	Door	Jamb	Solid	Metal	0.15
507	1974 Bldg.	194	2/7/97	XRF	2	Classroom	226	Wall	Wall	Solid	Drywall	0.02
508	1974 Bldg.	195	2/7/97	XRF	2	Classroom	226	Wall	Wall	Solid	Concrte	0
509	1974 Bldg.	197	2/7/97	XRF	2	Classroom	226	Window	Casing	Solid	Metal	0.01
510	1974 Bldg.	196	2/7/97	XRF	2	Classroom	226	Window	Sash	Solid	Metal	0.29
511	1974 Bldg.	190	2/7/97	XRF	2	Classroom	227	Cabinet	Door	Solid	Metal	0.03
512	1974 Bldg.	193	2/7/97	XRF	2	Classroom	227	Door	Door	Solid	Wood	0
513	1974 Bldg.	192	2/7/97	XRF	2	Classroom	227	Door	Jamb	Solid	Metal	0
514	1974 Bldg.	191	2/7/97	XRF	2	Classroom	227	Window	Panel	Solid	Metal	0
515	1974 Bldg.	186	2/7/97	XRF	2	Classroom	227	Wall	Wall	Solid	Wood	0
516	1974 Bldg.	187	2/7/97	XRF	2	Classroom	227	Wall	Wall	Solid	Concrte	0.04
517	1974 Bldg.	189	2/7/97	XRF	2	Classroom	227	Window	Casing	Peeling	Metal	0.17
518	1974 Bldg.	188	2/7/97	XRF	2	Classroom	227	Window	Sash	Peeling	Metal	0
519	1974 Bldg.	183	2/7/97	XRF	2	Classroom	228	Cabinet	Shelf	Solid	Metal	0.02
520	1974 Bldg.	184	2/7/97	XRF	2	Classroom	228	Door	Door	Solid	Wood	0
521	1974 Bldg.	185	2/7/97	XRF	2	Classroom	228	Door	Jamb	Solid	Metal	0.02
522	1974 Bldg.	182	2/7/97	XRF	2	Classroom	228	Window	Panel	Solid	Metal	0
523	1974 Bldg.	179	2/7/97	XRF	2	Classroom	228	Wall	Wall	Solid	Concrte	0.03
524	1974 Bldg.	181	2/7/97	XRF	2	Classroom	228	Window	Casing	Solid	Metal	0.1
525	1974 Bldg.	180	2/7/97	XRF	2	Classroom	228	Window	Sash	Solid	Metal	0
526	1974 Bldg.	165	2/7/97	XRF	2	Classroom	229	Cabinet	Door	Solid	Metal	0.03
527	1974 Bldg.	171	2/7/97	XRF	2	Classroom	229	Closet	Casing	Solid	Metal	0.01
528	1974 Bldg.	170	2/7/97	XRF	2	Classroom	229	Closet	Wall	Solid	Wood	0.07
529	1974 Bldg.	167	2/7/97	XRF	2	Classroom	229	Door	Door	Solid	Wood	0
530	1974 Bldg.	166	2/7/97	XRF	2	Classroom	229	Door	Jamb	Solid	Metal	0.01
531	1974 Bldg.	163	2/7/97	XRF	2	Classroom	229	Wall	Wall	Solid	Drywall	0
532	1974 Bldg.	164	2/7/97	XRF	2	Classroom	229	Wall	Wall	Solid	Concrte	0.05
533	1974 Bldg.	52	2/7/97	XRF	1	Hall	1	Door	Door	Solid	Metal	0.02
534	1974 Bldg.	53	2/7/97	XRF	1	Hall	1	Door	Jamb	Solid	Metal	0.08
535	1974 Bldg.	56	2/7/97	XRF	1	Hall	1	Stairs	Column	Solid	Metal	0.03
536	1974 Bldg.	57	2/7/97	XRF	1	Hall	1	Stairs	Column	Solid	Concrte	0
537	1974 Bldg.	54	2/7/97	XRF	1	Hall	1	Stairs	Hand rail	Solid	Wood	0
538	1974 Bldg.	55	2/7/97	XRF	1	Hall	1	Stairs	Hand rail	Solid	Wood	0.06
539	1974 Bldg.	50	2/7/97	XRF	1	Hall	1	Wall	Wall	Solid	Drywall	0.02
540	1974 Bldg.	51	2/7/97	XRF	1	Hall	1	Wall	Wall	Solid	Concrte	0.01
541	1974 Bldg.	150	2/7/97	XRF	1	Hall	6	Door	Door	Solid	Metal	0.01
542	1974 Bldg.	146	2/7/97	XRF	1	Hall	6	Door	Jamb	Solid	Metal	0.17
543	1974 Bldg.	151	2/7/97	XRF	1	Hall	6	Door	Jamb	Solid	Metal	0.03
544	1974 Bldg.	144	2/7/97	XRF	1	Hall	6	Wall	Wall	Solid	Wood	0.01
545	1974 Bldg.	145	2/7/97	XRF	1	Hall	6	Wall	Wall	Solid	Concrte	0

Saint Paul Public Schools
 North End Elementary
 Lead Based Paint Inspection

3	A	B	C	D	E	F	G	H	I	J	K	L
	Site	Sample #	Date	Analysis	Floor	Area	Room#	Component	Feature	Condition	Substrate	Results
546	1974 Bldg.	253	2/7/97	XRF	2	Hall	7	Door	Door	Solid	Metal	0.01
547	1974 Bldg.	254	2/7/97	XRF	2	Hall	7	Door	Jamb	Solid	Metal	0.03
548	1974 Bldg.	251	2/7/97	XRF	2	Hall	7	Wall	Column	Solid	Concrte	0.03
549	1974 Bldg.	252	2/7/97	XRF	2	Hall	7	Wall	Column	Solid	Metal	0.04
550	1974 Bldg.	250	2/7/97	XRF	2	Hall	7	Wall	Midle Wall	Solid	Drywall	0.01
551	1974 Bldg.	248	2/7/97	XRF	2	Hall	7	Wall	Wall	Solid	Concrte	0
552	1974 Bldg.	249	2/7/97	XRF	2	Hall	7	Wall	Wall	Solid		0
553	1974 Bldg.	29	2/6/97	XRF	1	Outside	0	Door	Door	Peeling	Metal	0.01
554	1974 Bldg.	34	2/6/97	XRF	1	Outside	0	Door	Door	Peeling	Metal	0.09
555	1974 Bldg.	30	2/6/97	XRF	1	Outside	0	Door	Jamb	Peeling	Metal	0.24
556	1974 Bldg.	31	2/6/97	XRF	1	Outside	0	Door	Jamb	Solid	Metal	0.07
557	1974 Bldg.	32	2/6/97	XRF	1	Outside	0	Door	Jamb	Peeling	Metal	0.08
558	1974 Bldg.	33	2/6/97	XRF	1	Outside	0	Stairs	Hand rail	Peeling	Metal	0.06
559	1974 Bldg.	25	2/6/97	XRF	1	Outside	0	Window	Sash	Chalking	Metal	0.21
560	1974 Bldg.	26	2/6/97	XRF	1	Outside	0	Window	Sash	Solid	Metal	0.05
561	1974 Bldg.	27	2/6/97	XRF	1	Outside	0	Window	Sash	Solid		0.02
562	1974 Bldg.	28	2/6/97	XRF	1	Outside	0	Window	Sill	Solid	Metal	0
563	1974 Bldg.	143	2/7/97	XRF	1	Restroom	10	Partitian		Solid	Metal	0.03
564	1974 Bldg.	141	2/7/97	XRF	1	Restroom	10	Wall	Wall	Solid	Concrte	0.09
565	1974 Bldg.	142	2/7/97	XRF	1	Restroom	10	Wall	Wall	Solid	Concrte	0
566	1974 Bldg.	148	2/7/97	XRF	1	Restroom	11	Partitian		Solid	Metal	0.03
567	1974 Bldg.	149	2/7/97	XRF	1	Restroom	11	Electric	Panel	Solid	Metal	0
568	1974 Bldg.	147	2/7/97	XRF	1	Restroom	11	Wall	Midle Wall	Solid	Concrte	0.02
569	1974 Bldg.	169	2/7/97	XRF	2	Restroom	12	Partitian		Solid	Metal	0.03
570	1974 Bldg.	168	2/7/97	XRF	2	Restroom	12	Wall	Midle Wall	Solid	Concrte	0
571	1974 Bldg.	66	2/7/97	XRF	1	Room	14	Door	Door	Solid	Wood	0
572	1974 Bldg.	65	2/7/97	XRF	1	Room	14	Door	Jamb	Solid	Metal	0
573	1974 Bldg.	63	2/7/97	XRF	1	Room	14	Wall	Wall	Solid	Concrte	0
574	1974 Bldg.	64	2/7/97	XRF	1	Room	14	Wall	Wall	Solid	Drywall	0
575	1974 Bldg.	140	2/7/97	XRF	1	Room	15	Door	Door	Solid	Wood	0
576	1974 Bldg.	139	2/7/97	XRF	1	Room	15	Door	Jamb	Solid	Metal	0.15
577	1974 Bldg.	138	2/7/97	XRF	1	Room	15	Wall	Baseboard	Solid	Concrte	0
578	1974 Bldg.	137	2/7/97	XRF	1	Room	15	Wall	Wall	Solid	Concrte	0
579	1974 Bldg.	162	2/7/97	XRF	2	Room	16	Door	Casing	Solid	Metal	0
580	1974 Bldg.	161	2/7/97	XRF	2	Room	16	Door	Door	Solid	Wood	0
581	1974 Bldg.	159	2/7/97	XRF	2	Room	16	Wall	Wall	Solid	Drywall	0
582	1974 Bldg.	160	2/7/97	XRF	2	Room	16	Wall	Wall	Solid	Concrte	0.04
583	1974 Bldg.	247	2/7/97	XRF	2	Room	17	Door	Door	Solid	Wood	0
584	1974 Bldg.	246	2/7/97	XRF	2	Room	17	Door	Jamb	Solid	Metal	0.01
585	1974 Bldg.	245	2/7/97	XRF	2	Room	17	Wall	Column	Solid	Wood	0
586	1974 Bldg.	244	2/7/97	XRF	2	Room	17	Wall	Wall	Solid	Concrte	0
587	1974 Bldg.	156	2/7/97	XRF	1	Stairwell	3	Door	Door	Solid	Metal	0.02
588	1974 Bldg.	154	2/7/97	XRF	1	Stairwell	3	Door	Jamb	Solid	Metal	0.16
589	1974 Bldg.	155	2/7/97	XRF	1	Stairwell	3	Door	Jamb	Solid		0.15
590	1974 Bldg.	153	2/7/97	XRF	1	Stairwell	3	Stairs	Baseboard	Peeling	Metal	0.01
591	1974 Bldg.	158	2/7/97	XRF	2	Stairwell	3	Window	Panel	Solid	Wood	0.01
592	1974 Bldg.	152	2/7/97	XRF	1	Stairwell	3	Wall	Wall	Solid	Concrte	0.02
593	1974 Bldg.	157	2/7/97	XRF	2	Stairwell	3	Window	Casing	Solid	Metal	0.15

APPENDIX B

LABORATORY SAMPLE ANALYSIS DATA

LABORATORY ANALYSIS REPORT

DATE: February 14, 1997 **PAGE:** 1 Of 1

CLIENT: Midwest Environmental Cons. **PROJECT NO.:** 021197-200888
5385 401st Ave. NW **COLLECTION DATE:** 2/06/97
Dalbo, MN 55017 **COLLECTED BY:** Client
RECEIVED DATE: 2/11/97
PROJECT DESCRP.: 62/0197D North End

CONTACT: Richard Cox

<u>SAMPLE #</u>	<u>DESCP.</u>	<u>MDL</u>	<u>LEAD</u>	<u>ANALYSIS</u>
			(6010A) Units=mg/kg <u>RESULTS</u>	
L970727-1	D-22	38	ND	2/14/97
L970727-2	D-34	28	300	2/14/97
L970727-3	D-86	34	ND	2/14/97
L970727-4	D-154/155	42	180	2/14/97
L970727-5	D-159	140	7600	2/14/97
L970727-6	D-157	22	2000	2/14/97
L970727-7	D-239	240	2700	2/14/97
L970727-8	D-240	1000	5600	2/14/97

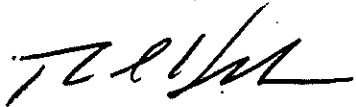
ND means Not Detected or below reported MDL

MDL means Method Detection Limit

mg/kg means Milligrams Per Kilogram which is equivalent to Parts Per Million (ppm)

This report has been reviewed by me for technical accuracy and completeness. The analyses were performed using EPA or other approved methodologies and the results were reported on an "as received" basis unless otherwise noted. Organic soil analyses were reported on a dry weight basis. The results reported relate only to the items tested. Please contact me if you have any questions or comments regarding this report. Spectrum Labs, Inc. appreciates the opportunity to provide this analytical service for you.

Report Submitted By,


Thomas L. Halverson
Laboratory Manager

TLH:wmc
mec045-1

As a mutual protection, all reports are submitted in confidentiality and may not be reproduced except in full without written authorization.



