

John A Johnson Elementary School

740 York Avenue

Project Summary:

An Achievement Plus school John A Johnson is located adjacent to the East Side YMCA, jointly serving their communities’ educational, recreation, and wellness needs. The proposed remodel will enable John A Johnson to both increase its community engagement, but also improve student safety. A reorganization of the main office to locate it at the main entry along with introducing a secure vestibule will allow increase supervision. Introducing a secure line between the east and west sides of the main floor will provide a dedicated area for community partners to reside. The upper floors gain a variety of break-out and small group areas in addition to renovated general classrooms. Specialized classrooms (science and computer labs) also receive renovations. On the second floor, a proposed media center renovation would include creating a variety of learning zones utilizing architectural features, but also new flexible furniture. Also on th second floor a flexible marker space would be provided. On the lower level the cafeteria and servery would also recieve improvements aimed to improve capacity and servery flow.

Top 10 Site Identified Priorities

1. Early Learning Suite
2. Assembly / Stage
3. Front Office Renovation / Secure Entry
4. Family Space
5. Fence Playground
6. Improve Column Locations in Classrooms
7. Library Break-out Areas and Furniture Renovation
8. Teacher Offices
9. Intimate / Small Break-out Areas

General Notes:

Existing utilization shown is for School Year 2014-2015

The Conceptual Utilization Plans are exploratory rather than actual construction plans and represent the design at one moment in time, which will change as the design and funding process progress.

The Conceptual Plans are included as a way to organize scopes of work into logical, efficient and meaningful projects. There is no prioritization implied in a work scope title (e.g. “Work Scope A” is not necessarily the most critical work to be done).

The plans in this document are not comprehensive of the entire building’s needs as maintenance and replacement of existing building systems such as roofs and mechanical systems are omitted to maintain graphic clarity of the overall vision generated during the Facilities Master Plan Process.

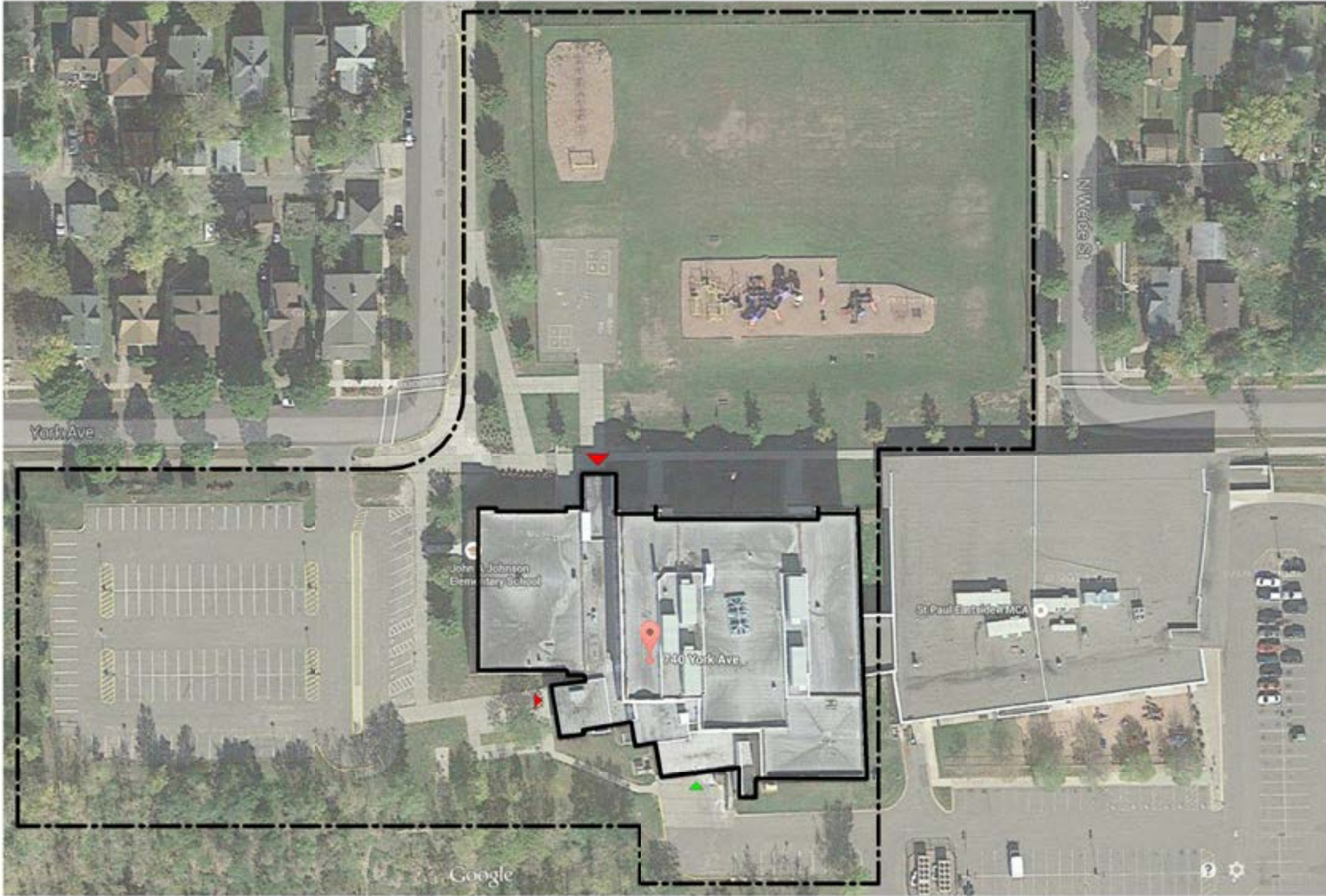
Formal zoning reviews have not been undertaken for the proposed work shown in these plans. A review with zoning and building code authorities will occur once the funding is secured.



Grade Levels:	PK-5
SY 2014/15 Enrollment:	375
Design Enrollment:	504

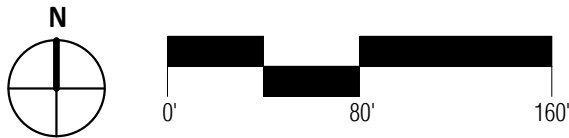
John A Johnson Elementary School

Site Concept



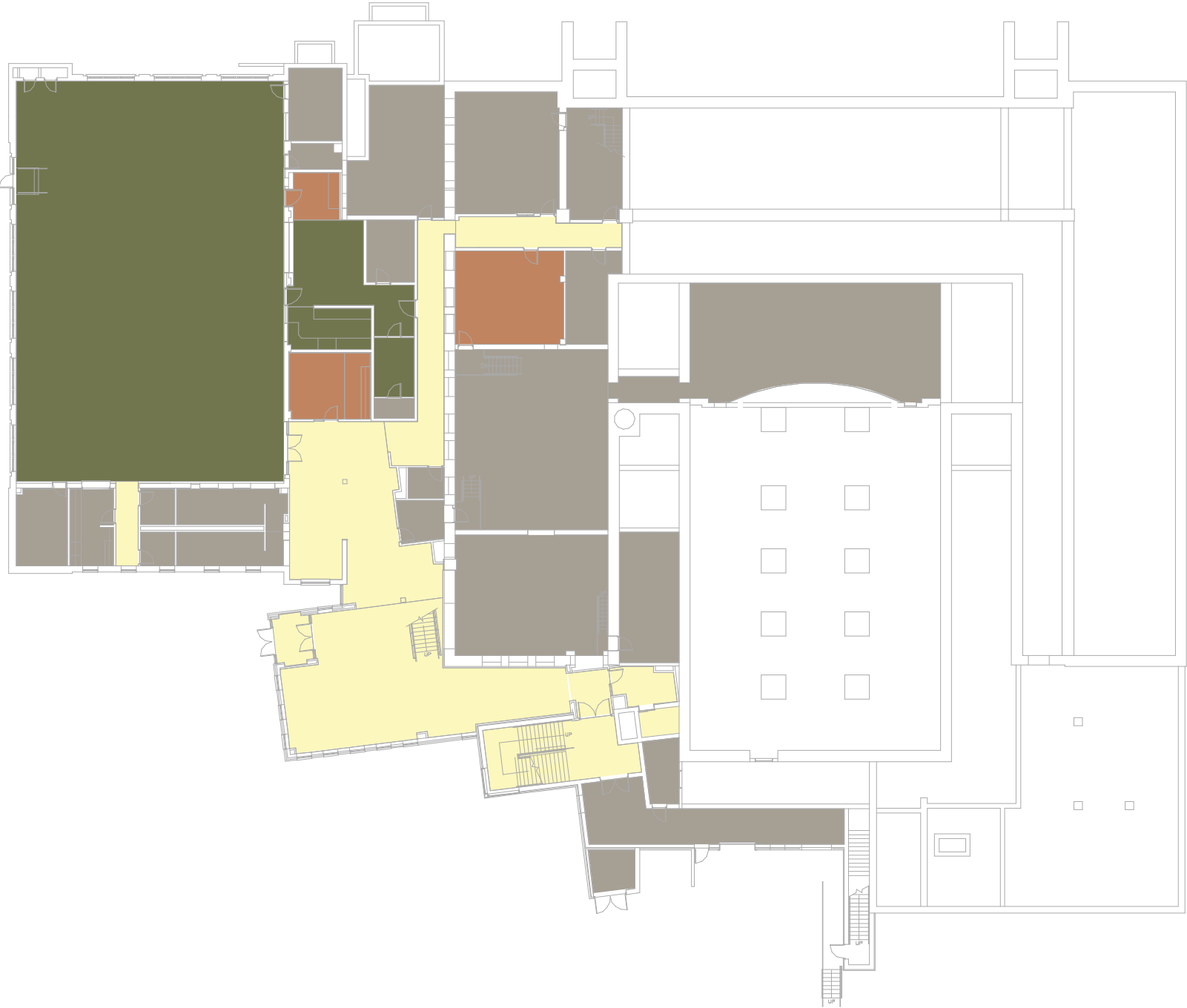
Legend:

- Property Line
- ▲ Main Entry
- ▲ Secondary Entry
- ▲ Service Entry
- New Landscape and Playground
- Parking and Hardscape
- New Building Construction

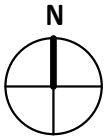


John A Johnson Elementary School

Existing Utilization



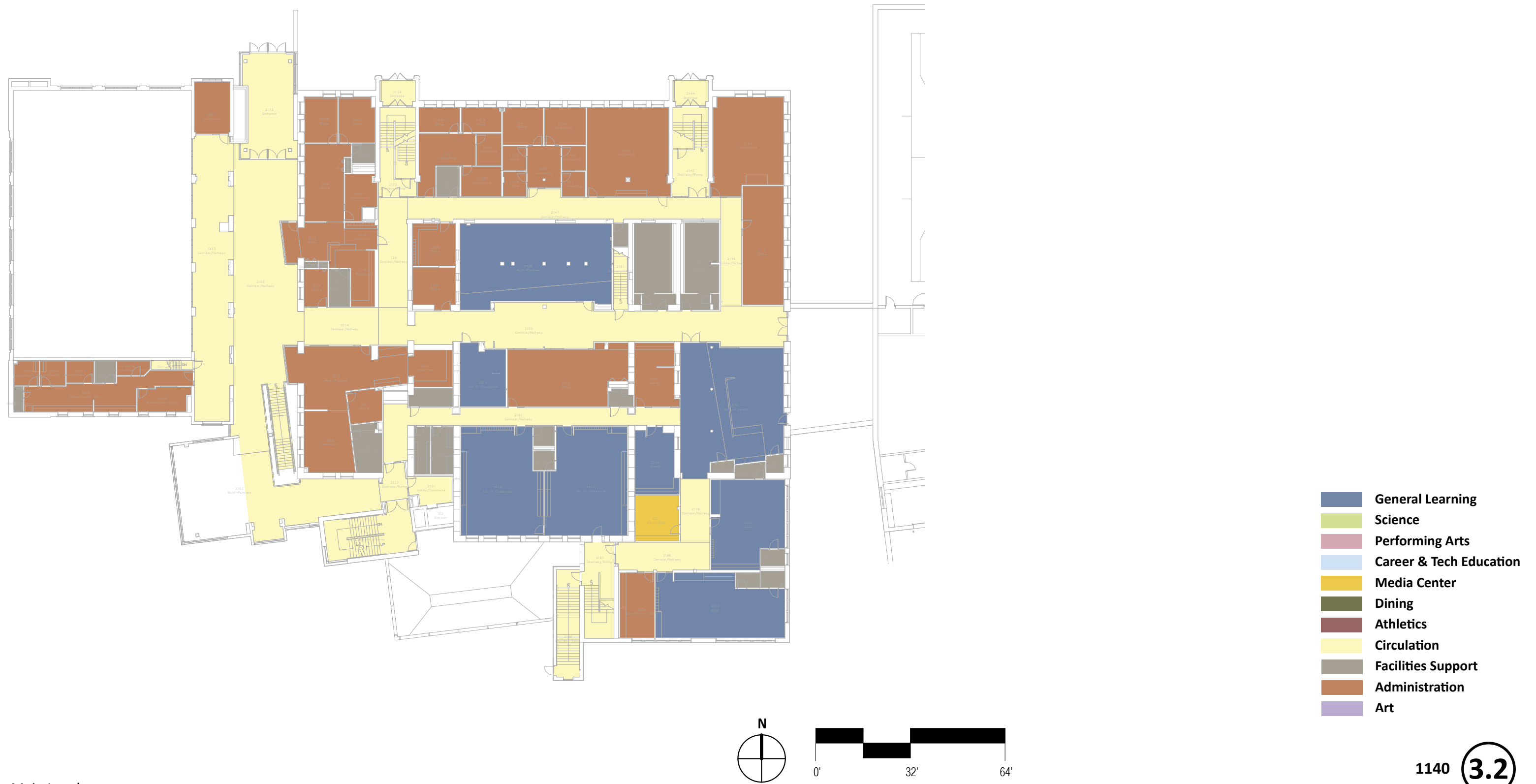
- General Learning
- Science
- Performing Arts
- Career & Tech Education
- Media Center
- Dining
- Athletics
- Circulation
- Facilities Support
- Administration
- Art



Lower Level

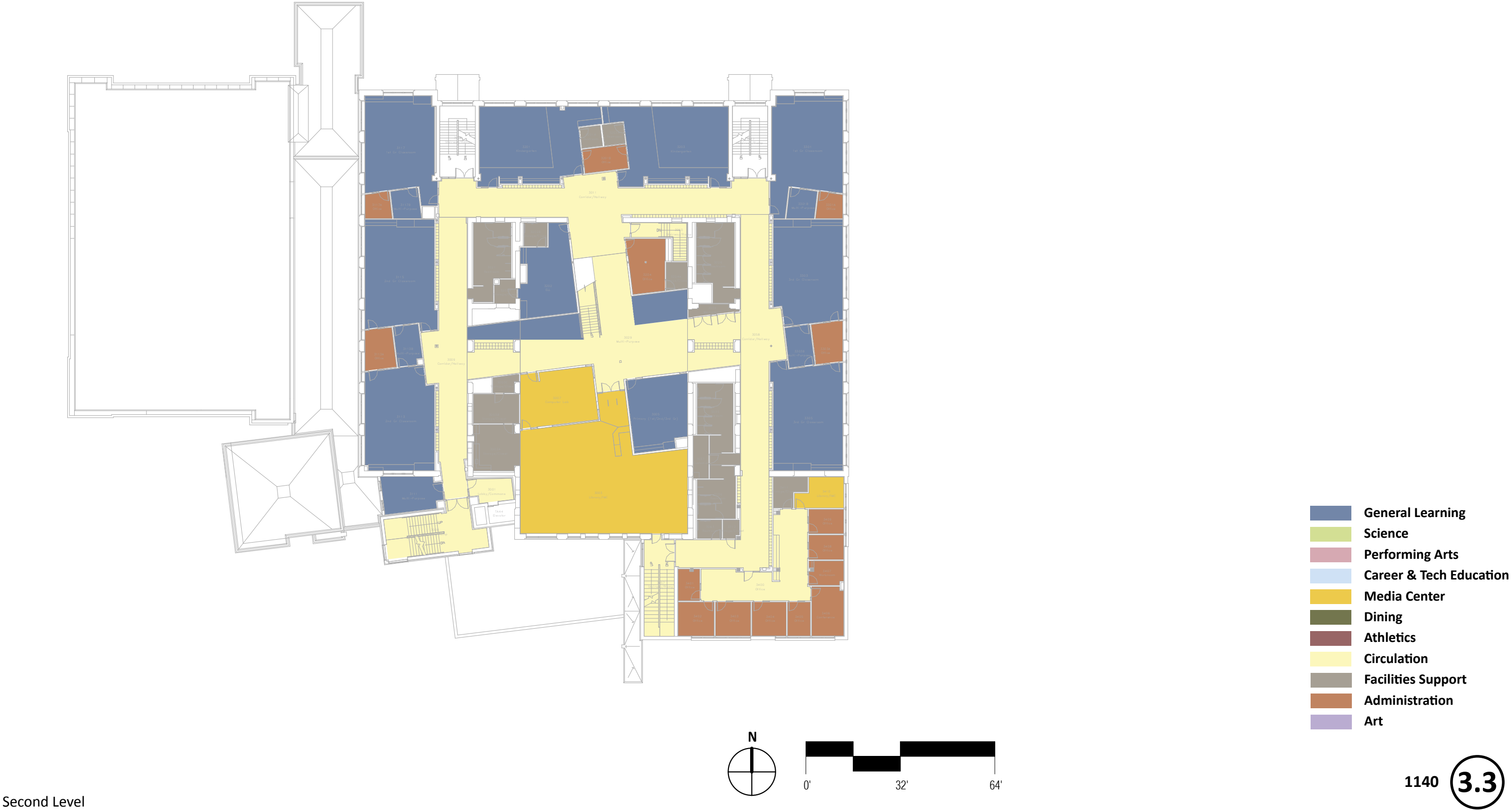
John A Johnson Elementary School

Existing Utilization



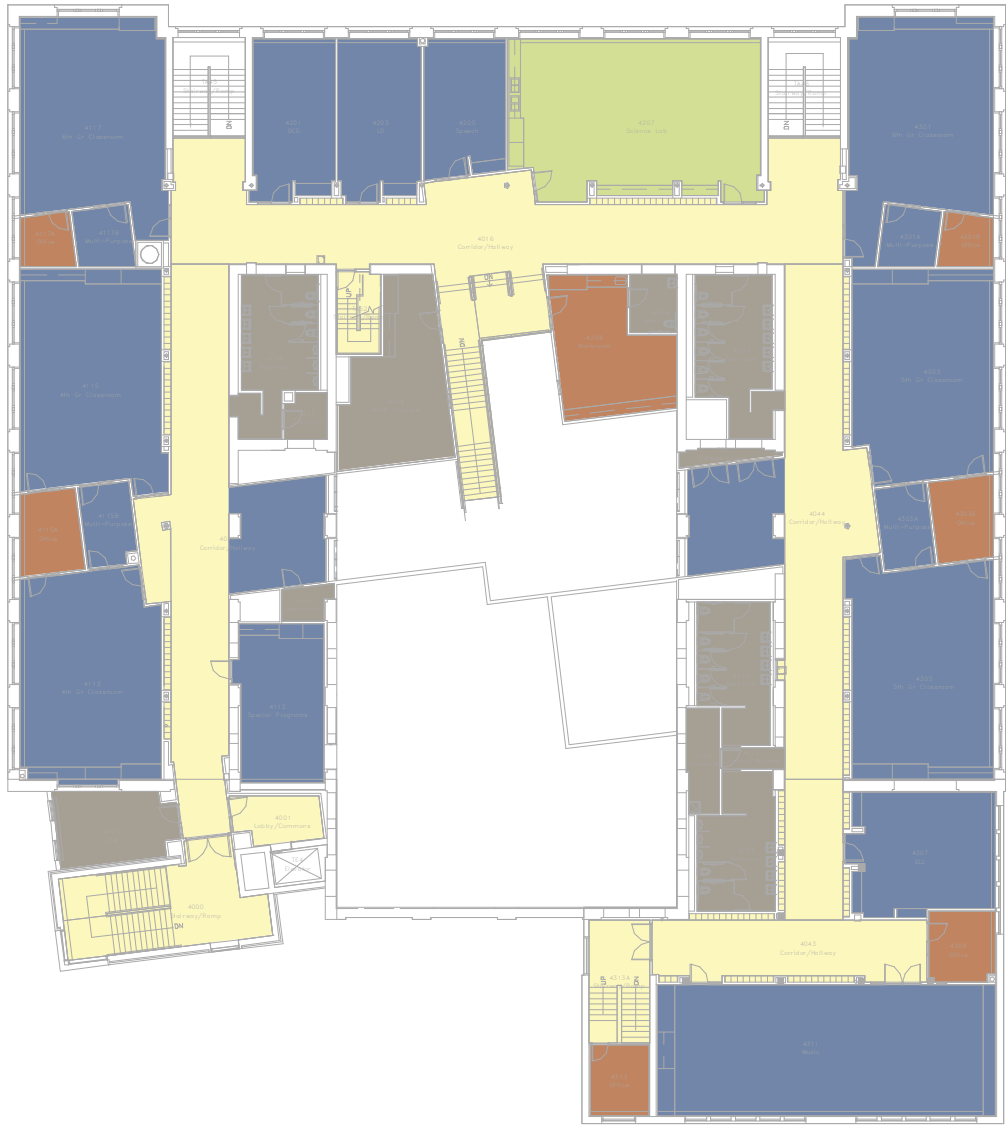
John A Johnson Elementary School

Existing Utilization

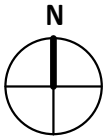


John A Johnson Elementary School

Existing Utilization



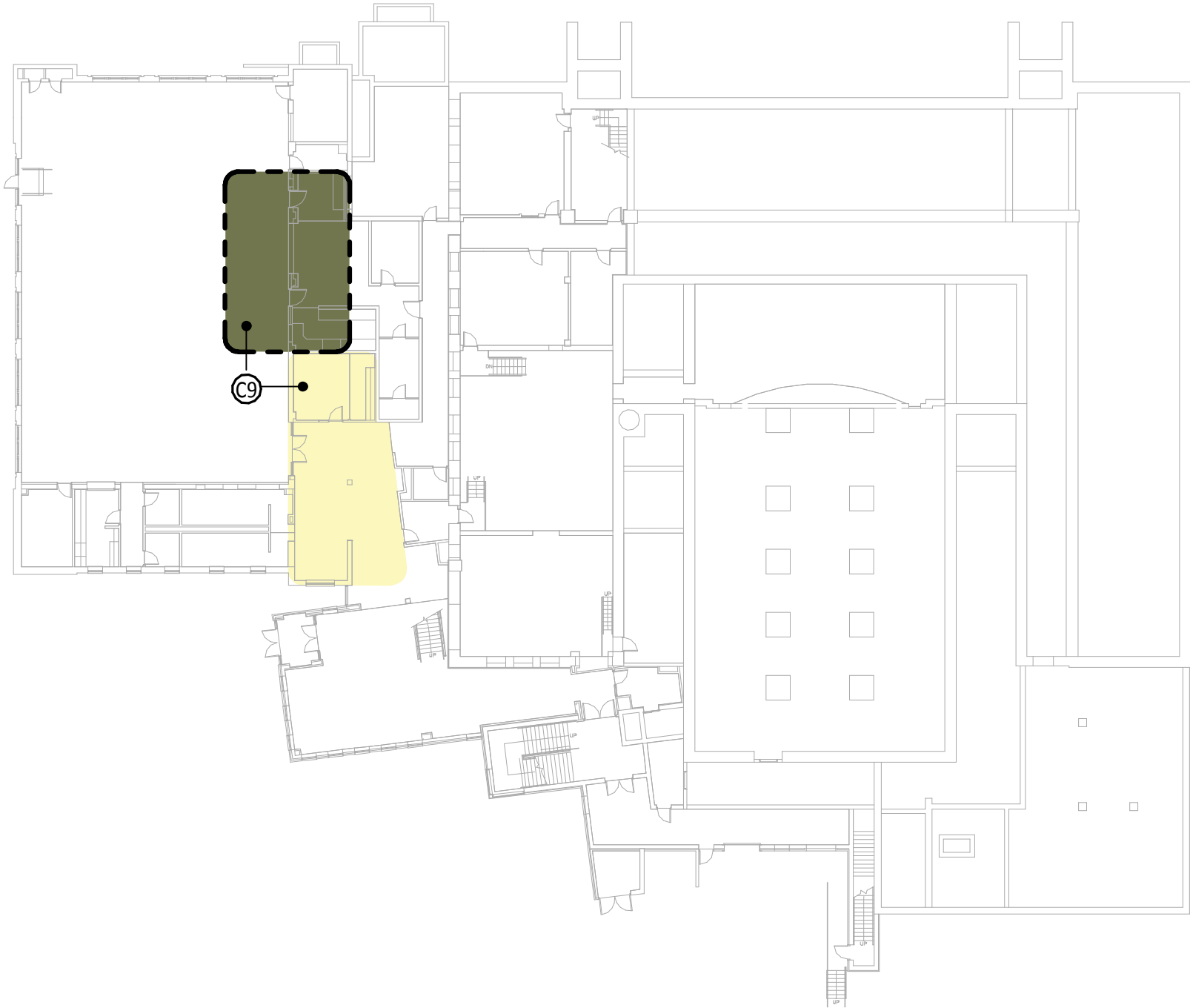
- General Learning
- Science
- Performing Arts
- Career & Tech Education
- Media Center
- Dining
- Athletics
- Circulation
- Facilities Support
- Administration
- Art






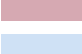

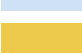











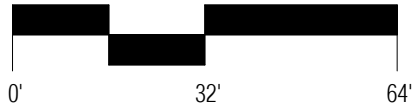
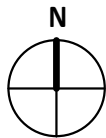
John A Johnson Elementary School

Conceptual Utilization Plan

- Legend:**
- C1. Create Early Learning Suite
 - C2. Renovate / Remodel Existing Administration Offices to Provide General Classrooms
 - C3. Provide a second story addition over Cafeteria for Community partners.
 - C4. Create a secure school zone.
 - C5. Create and modify Break-out zones.
 - C6. Create an open Maker Space.
 - C7. Create learning zones in the Media Center. Provide new furniture.
 - C8. Renovate/Remodel Classrooms
 - C9. Renovate Servery to accommodate two lunch serving lines. Widen entry to Cafeteria.
 - C10. Create windows as indicated.
 - C11. Renovate Science Lab and Computer Classroom.
 - C12. Remodel Special Education / Office area.
 - C13. Renovate Space for Community Use
 - C14. Motor Room
 - C15. Provide Restroom



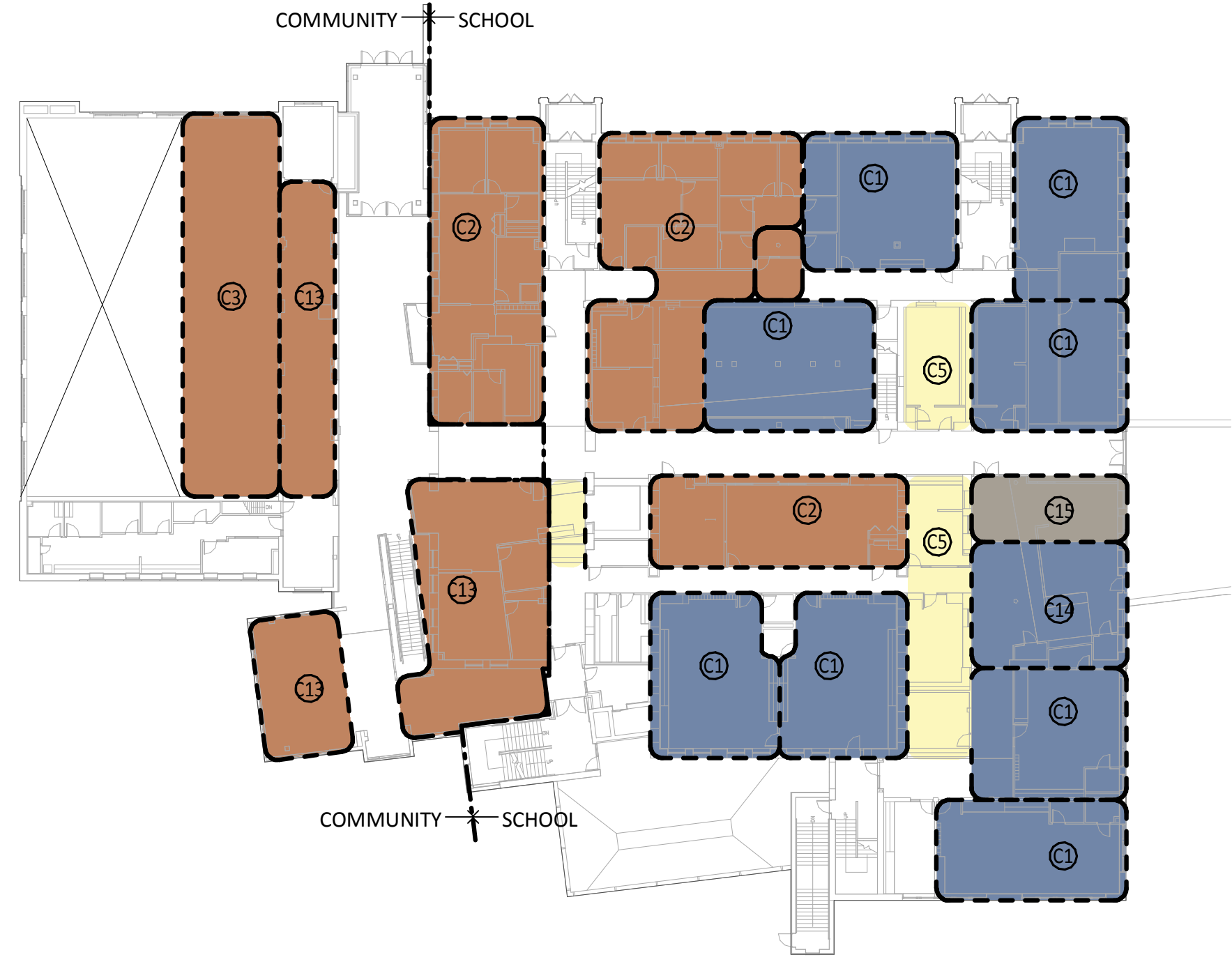
- | | | | |
|---|----------------------|---|-------------------------|
|  | Demolition / Removal |  | General Learning |
|  | New / Existing |  | Science |
|  | Property Line |  | Performing Arts |
|  | Main Entry |  | Career & Tech Education |
|  | Secondary Entry |  | Media Center |
|  | Service Entry |  | Dining |
| | |  | Athletics |
| | |  | Circulation |
| | |  | Facilities Support |
| | |  | Administration |
| | |  | Art |



John A Johnson Elementary School

Conceptual Utilization Plan

- Legend:**
- C1. Create Early Learning Suite
 - C2. Renovate / Remodel Existing Administration Offices to Provide General Classrooms
 - C3. Provide a second story addition over Cafeteria for Community partners.
 - C4. Create a secure school zone.
 - C5. Create and modify Break-out zones.
 - C6. Create an open Maker Space.
 - C7. Create learning zones in the Media Center. Provide new furniture.
 - C8. Renovate/Remodel Classrooms
 - C9. Renovate Servery to accommodate two lunch serving lines. Widen entry to Cafeteria.
 - C10. Create windows as indicated.
 - C11. Renovate Science Lab and Computer Classroom.
 - C12. Remodel Special Education / Office area.
 - C13. Renovate Space for Community Use
 - C14. Motor Room
 - C15. Provide Restroom




- Demolition / Removal**
- New / Existing**
- Property Line**
- Main Entry**
- Secondary Entry**
- Service Entry**
- General Learning**
- Science**
- Performing Arts**
- Career & Tech Education**
- Media Center**
- Dining**
- Athletics**
- Circulation**
- Facilities Support**
- Administration**
- Art**


John A Johnson Elementary School


Conceptual Utilization Plan





- Legend:**
- C1. Create Early Learning Suite
 - C2. Renovate / Remodel Existing Administration Offices to Provide General Classrooms
 - C3. Provide a second story addition over Cafeteria for Community partners.
 - C4. Create a secure school zone.
 - C5. Create and modify Break-out zones.
 - C6. Create an open Maker Space.
 - C7. Create learning zones in the Media Center. Provide new furniture.
 - C8. Renovate/Remodel Classrooms
 - C9. Renovate Servery to accommodate two lunch serving lines. Widen entry to Cafeteria.
 - C10. Create windows as indicated.
 - C11. Renovate Science Lab and Computer Classroom.
 - C12. Remodel Special Education / Office area.
 - C13. Renovate Space for Community Use
 - C14. Motor Room
 - C15. Provide Restroom


 Demolition / Removal


 New / Existing


 Property Line


 Main Entry


 Secondary Entry


 Service Entry


 General Learning


 Science


 Performing Arts


 Career & Tech Education


 Media Center


 Dining

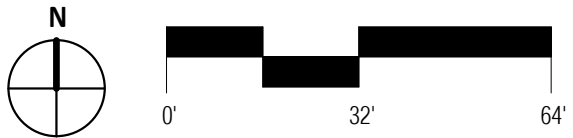
 Athletics

 Circulation

 Facilities Support

 Administration

 Art

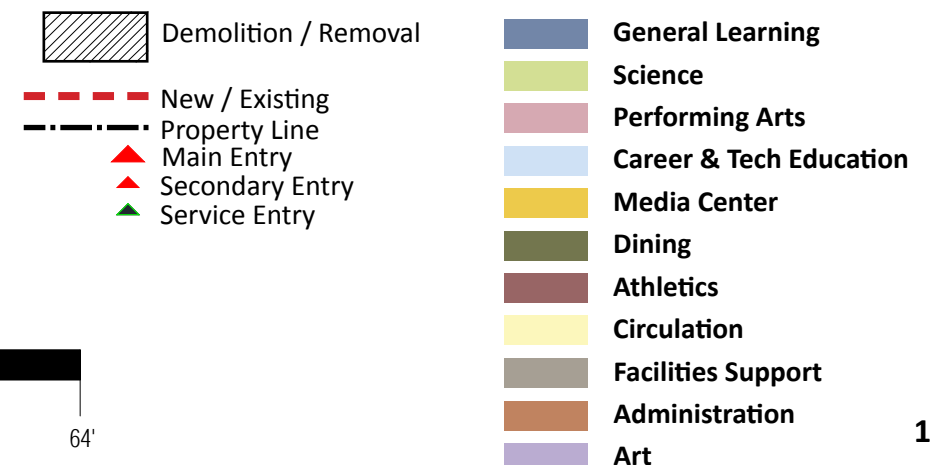


John A Johnson Elementary School

Conceptual Utilization Plan

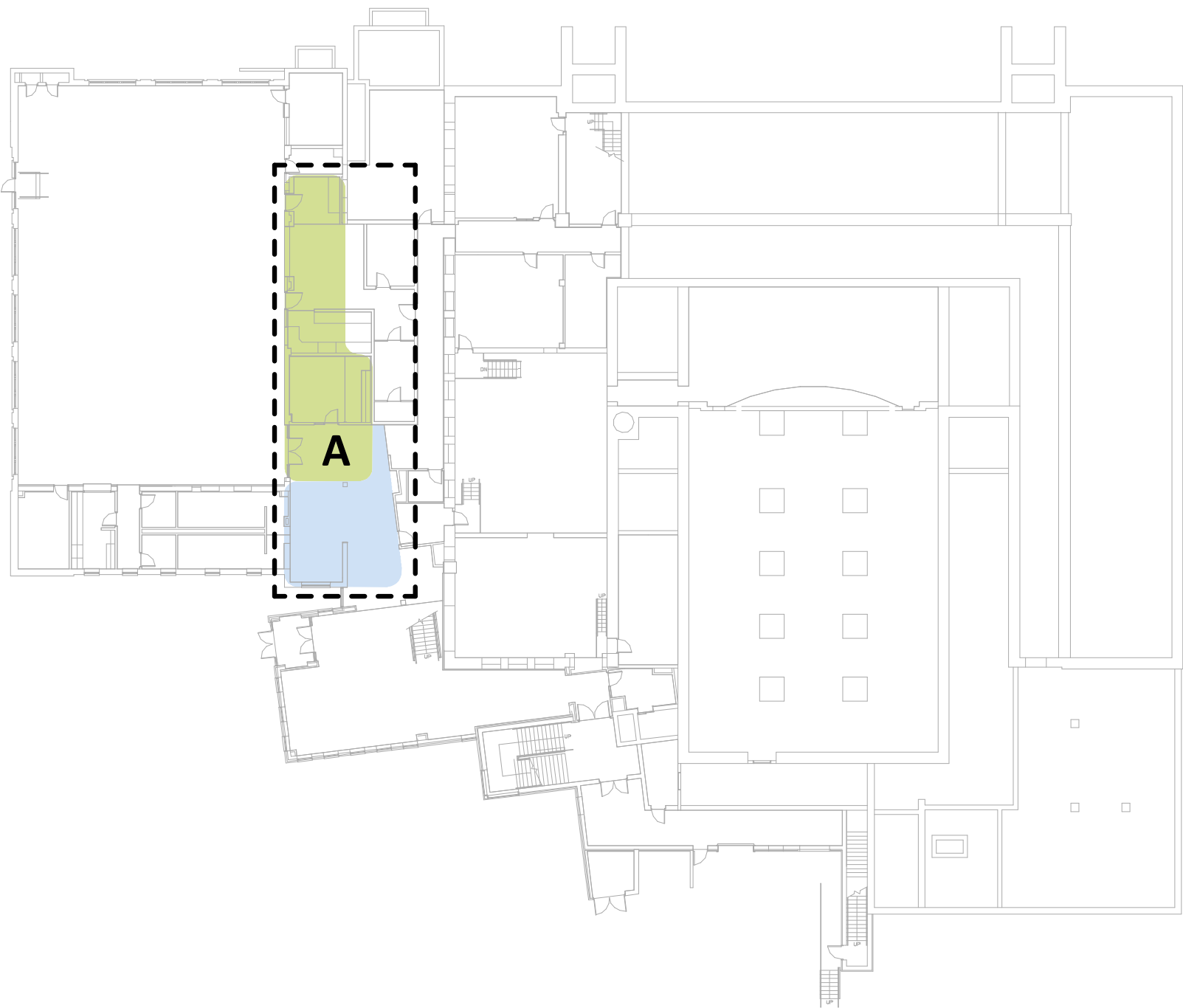


- C1. Create Early Learning Suite
- C2. Renovate / Remodel Existing Administration Offices to Provide General Classrooms
- C3. Provide a second story addition over Cafeteria for Community partners.
- C4. Create a secure school zone.
- C5. Create and modify Break-out zones.
- C6. Create an open Maker Space.
- C7. Create learning zones in the Media Center. Provide new furniture.
- C8. Renovate/Remodel Classrooms
- C9. Renovate Servery to accommodate two lunch serving lines. Widen entry to Cafeteria.
- C10. Create windows as indicated.
- C11. Renovate Science Lab and Computer Classroom.
- C12. Remodel Special Education / Office area.
- C13. Renovate Space for Community Use
- C14. Motor Room
- C15. Provide Restroom



John A Johnson Elementary School

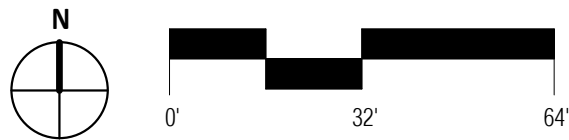
Conceptual Construction Plan

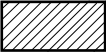









Scope Package	New Construction	Heavy Remodel	Medium Remodel	Light Remodel	Finishes Only
A	0 SF	0 SF	1669 SF	651 SF	0 SF
B	0 SF	0 SF	0 SF	0 SF	0 SF
TOTAL	0 SF	0 SF	1669 SF	651 SF	0 SF

Line Items	Unit	Lump Sum

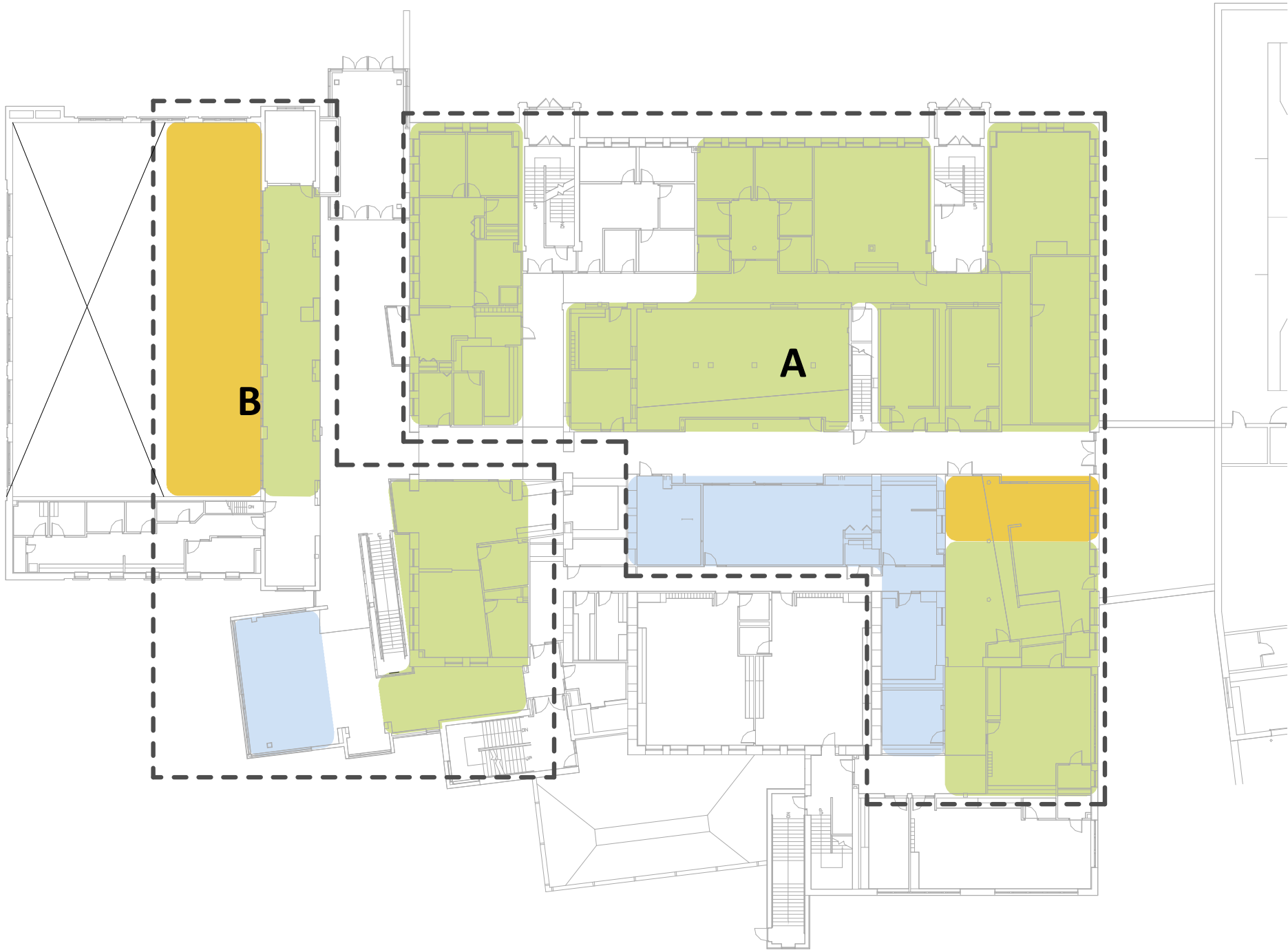
Lower Level



-  Demolition / Removal
-  New / Existing
-  New Construction
-  Heavy Remodel
-  Medium Remodel
-  Light Remodel
-  Finishes Only
-  No Work

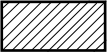







John A Johnson Elementary School

Conceptual Construction Plan



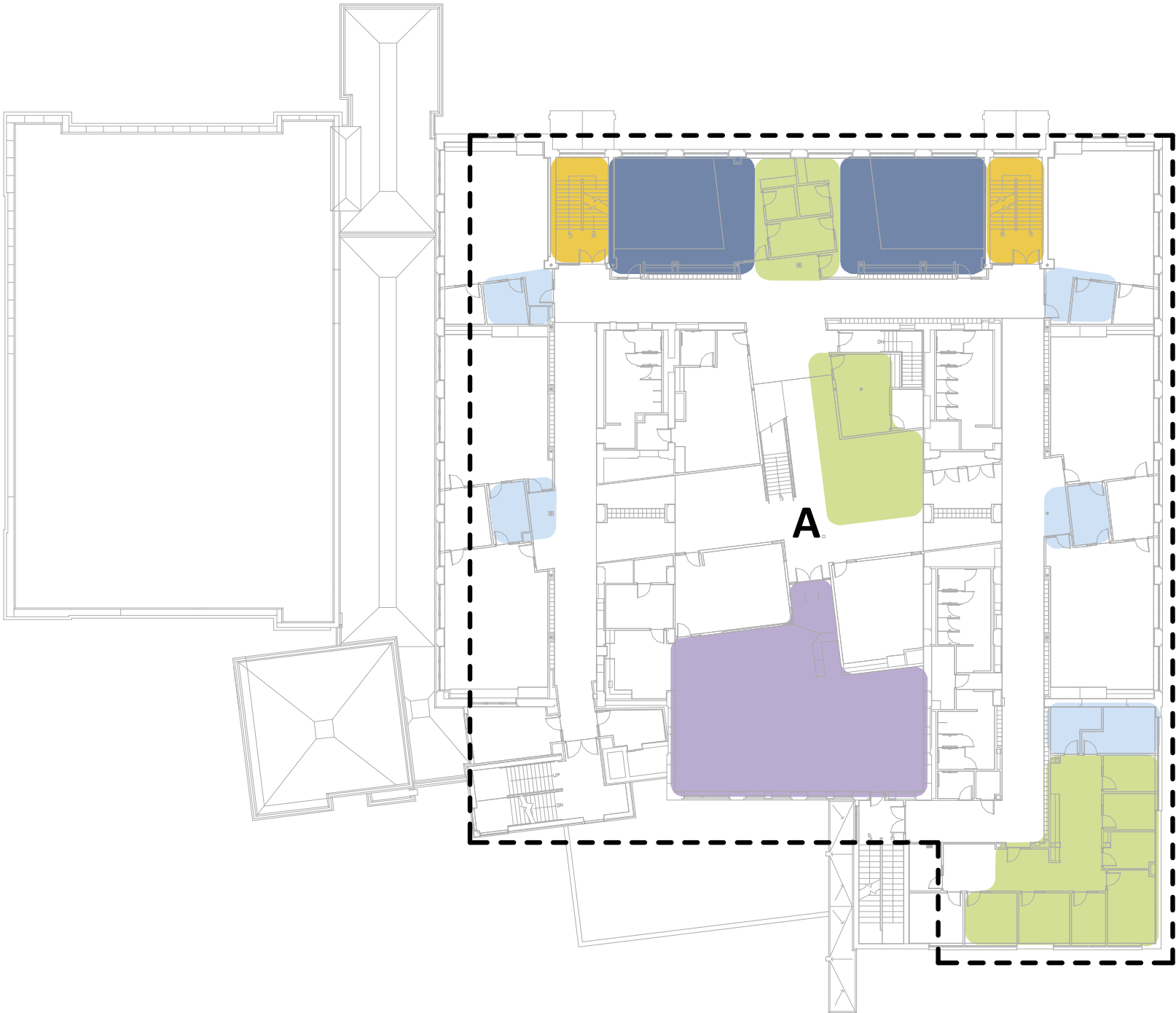
Scope Package	New Construction	Heavy Remodel	Medium Remodel	Light Remodel	Finishes Only
A	0 SF	582 SF	11,588 SF	2382 SF	0 SF
B	0 SF	2081 SF	2935 SF	701 SF	0 SF
TOTAL	0 SF	2663 SF	14,523 SF	3083 SF	0 SF

Line Items	Unit	Lump Sum

-  Demolition / Removal
-  New / Existing
-  New Construction
-  Heavy Remodel
-  Medium Remodel
-  Light Remodel
-  Finishes Only
-  No Work









John A Johnson Elementary School

Conceptual Construction Plan



Scope Package	New Construction	Heavy Remodel	Medium Remodel	Light Remodel	Finishes Only
A	0 SF	626 SF	2809 SF	2851 SF	2148 SF
B	0 SF	0 SF	0 SF	0 SF	0 SF
TOTAL	0 SF	626 SF	2809 SF	2851 SF	2148 SF

Line Items	Unit	Lump Sum

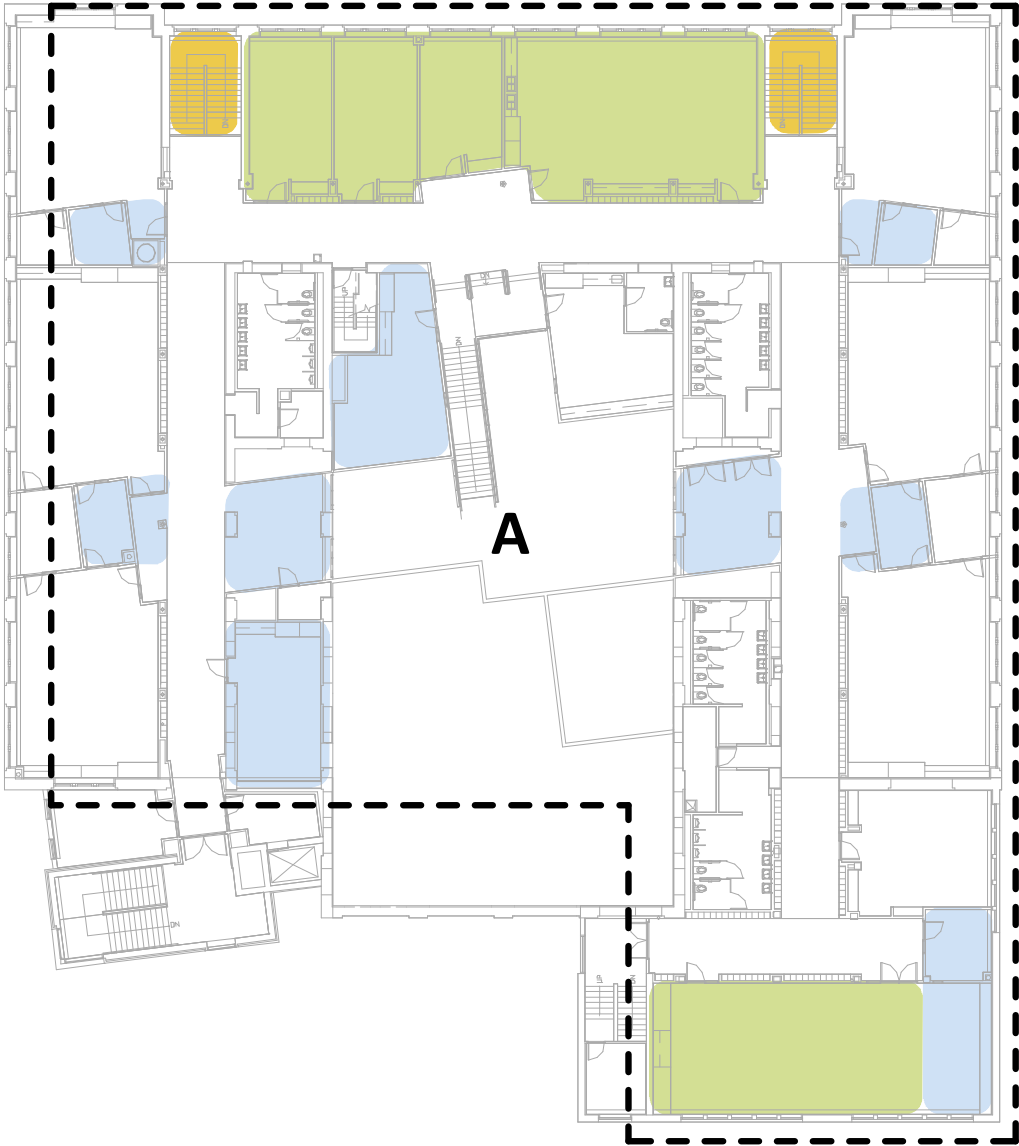
-  Demolition / Removal
-  New / Existing
-  New Construction
-  Heavy Remodel
-  Medium Remodel
-  Light Remodel
-  Finishes Only
-  No Work

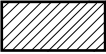







John A Johnson Elementary School

Conceptual Construction Plan

Scope Package	New Construction	Heavy Remodel	Medium Remodel	Light Remodel	Finishes Only
A	0 SF	380 SF	3385 SF	2717 SF	0 SF
B	0 SF	0 SF	0 SF	0 SF	0 SF
TOTAL	0 SF	380 SF	3385 SF	2717 SF	0 SF

Line Items	Unit	Lump Sum



-  Demolition / Removal
-  New / Existing
-  New Construction
-  Heavy Remodel
-  Medium Remodel
-  Light Remodel
-  Finishes Only
-  No Work

