

Ramsey Middle School

1700 Summit Avenue

Project Summary:

At Ramsey Middle School, our goal is to help students gain global perspective. Through our International Baccalaureate (IB) Middle Years Programme (MYP), we emphasize the value of teaching students to ask questions and think critically about issues in our school community and the world. All classes at Ramsey are rooted in IB and engage students in lessons that are relevant to their lives. Core academics are enhanced by learning activities and programs such as AVID, band and orchestra, and visual arts.

It was originally constructed in 1924 at 56,084 square feet. Later additions were completed in 1964, 1977, and 1991. It is now 98,491 square feet.

Issues Identified By School Community In 2015

1. Safety issues at entrance
2. Overall space more inviting
3. Updated Instructional Space
4. Look at wasted space in locker rooms
5. Inviting attractive tutoring spaces for volunteering
6. Conference room
7. Open/community space
8. Middle school model space
9. Drop off/Pick up space
10. More community outdoor space

General Notes:

Existing utilization shown is for School Year 2014-2015

The Conceptual Utilization Plans are exploratory rather than actual construction plans and represent the design at one moment in time, which will change as the design and funding process progress.

The Conceptual Plans are included as a way to organize scopes of work into logical, efficient and meaningful projects. There is no prioritization implied in a work scope title (e.g. “Work Scope A” is not necessarily the most critical work to be done).

The plans in this document are not comprehensive of the entire building’s needs as maintenance and replacement of existing building systems such as roofs and mechanical systems are omitted to maintain graphic clarity of the overall vision generated during the Facilities Master Plan Process.

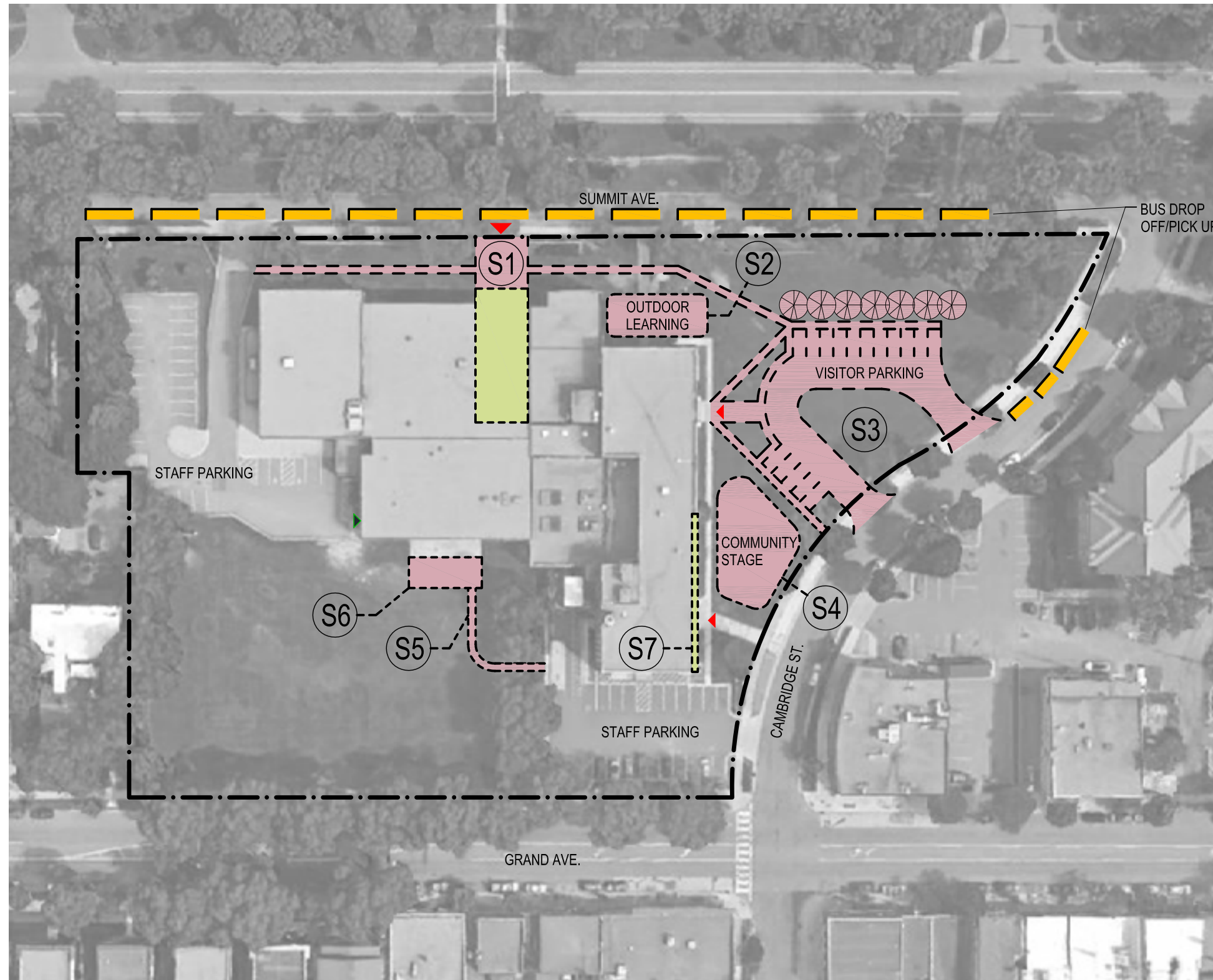
Formal zoning reviews have not been undertaken for the proposed work shown in these plans. A review with zoning and building code authorities will occur once the funding is secured.



Grade Levels:	5-8
SY 2014/15 Enrollment:	647
Design Enrollment:	756

Ramsey Middle School

Site Concept

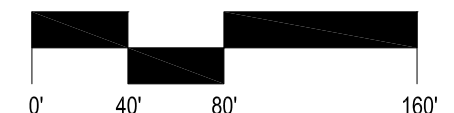
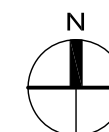


Legend:

- S1. New main entry
- S2. Outdoor learning (2,000 SF)
- S3. New landscape plan w/ parking, curbcuts, landscaping, and sidewalks
- S4. Commons Space (3,500 SF)
- S5. Sidewalk
- S6. New patio adjacent to cafeteria (600 SF)
- S7. Upgrade window wells

- Property Line
- ▲ Main Entry
- ▲ Secondary Entry
- ▲ Service Entry

- Alterations
- New Landscape Construction
- New Building Construction

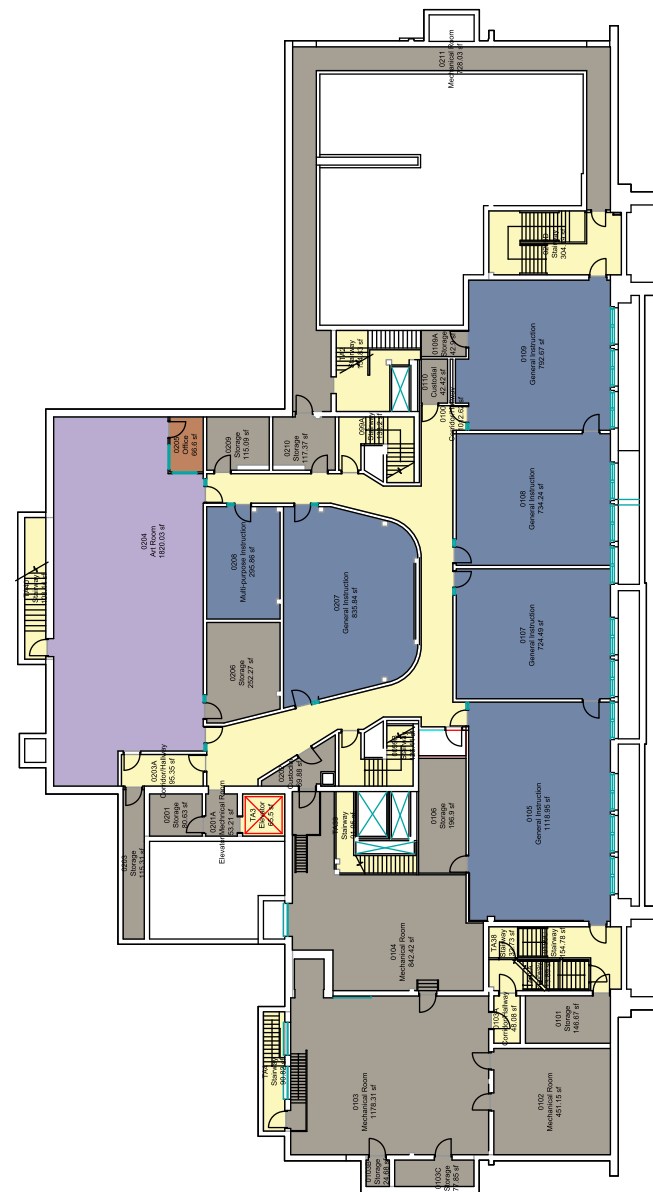


3140

2

Ramsey Middle School

Existing Utilization

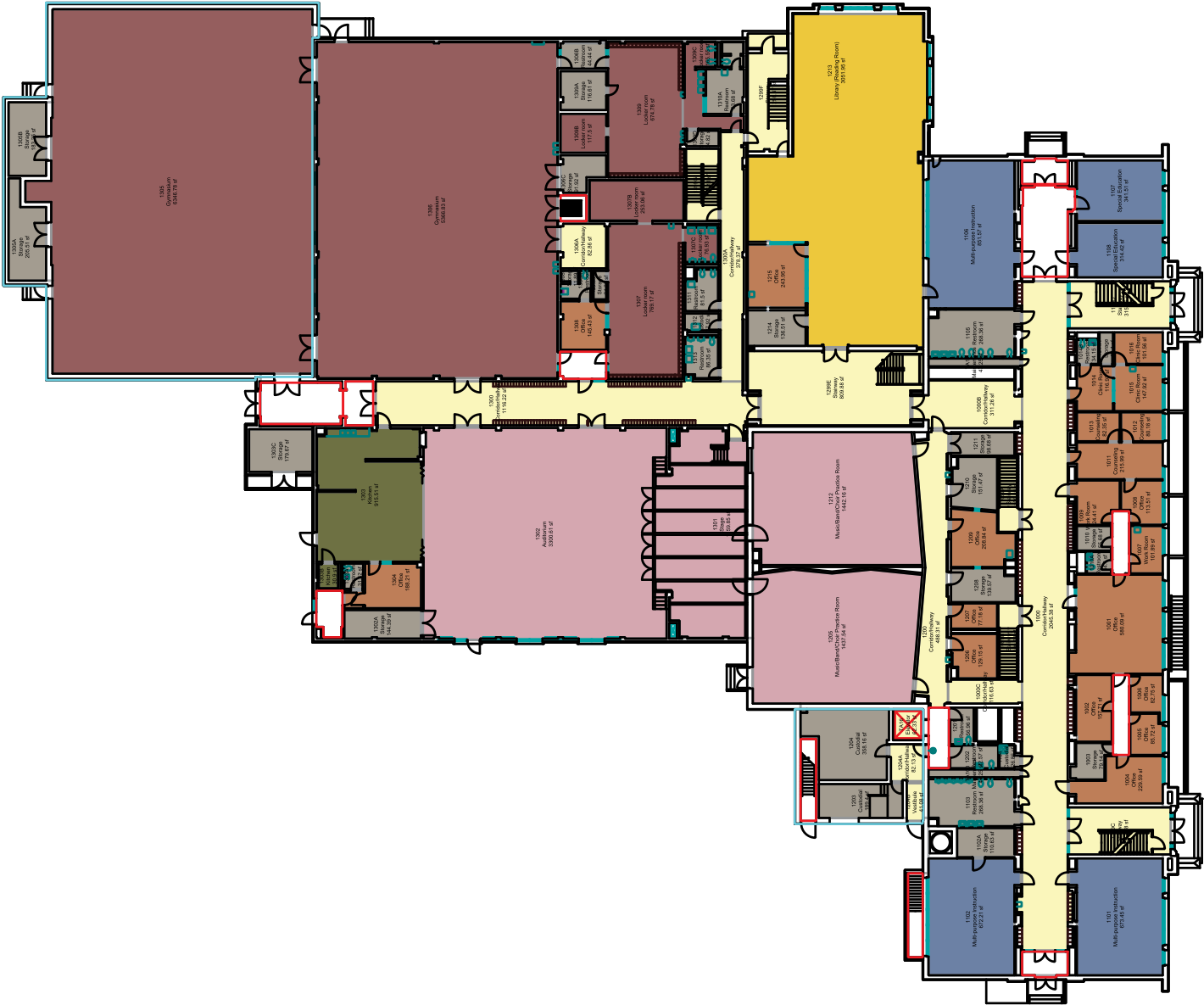


BASEMENT FLOOR

- General Learning
- Science
- Performing Arts
- Career & Tech Education
- Media Center
- Dining
- Athletics
- Circulation
- Facilities Support
- Administration
- Art

Ramsey Middle School

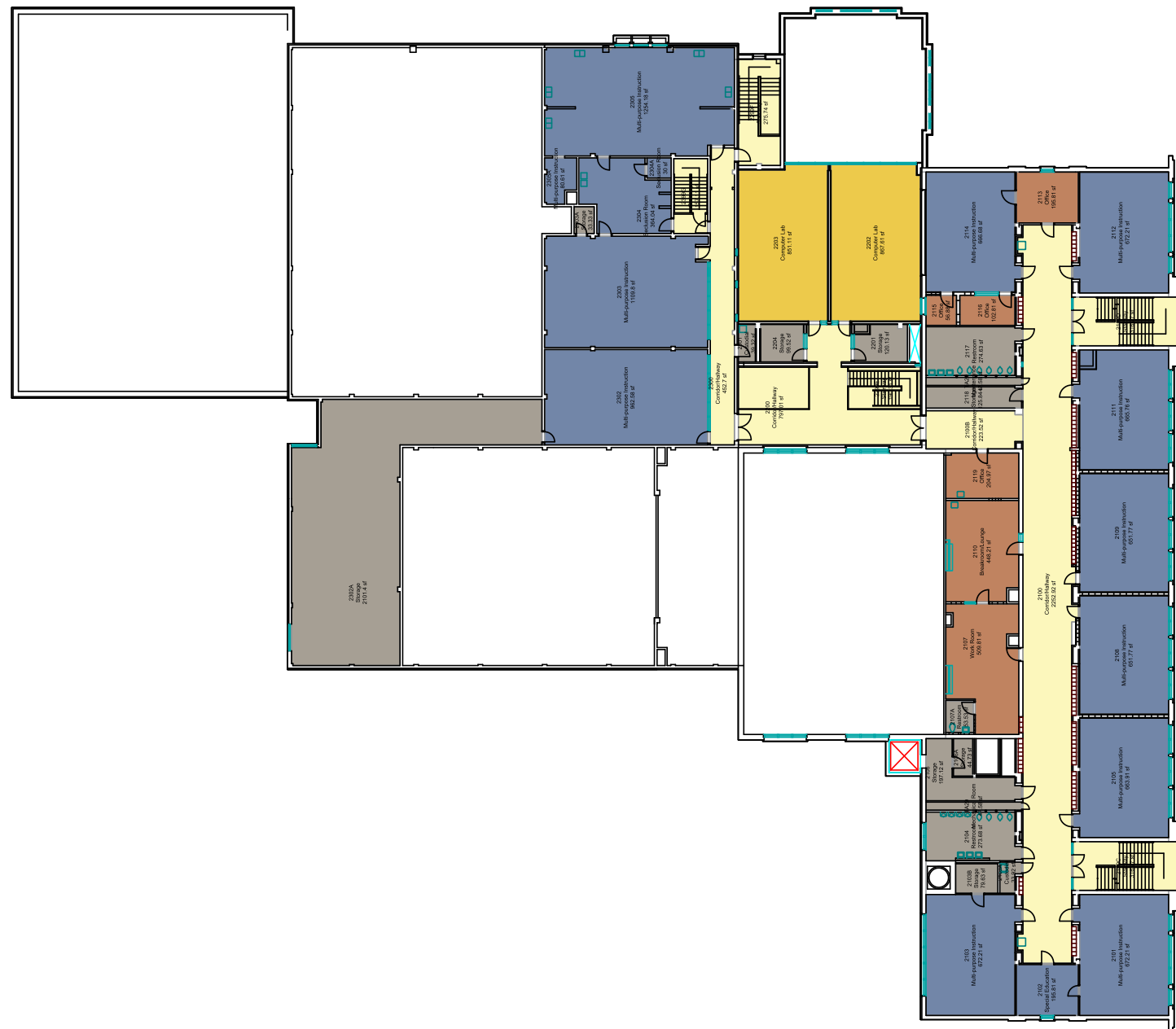
Existing Utilization



- General Learning
- Science
- Performing Arts
- Career & Tech Education
- Media Center
- Dining
- Athletics
- Circulation
- Facilities Support
- Administration
- Art

Ramsey Middle School

Existing Utilization

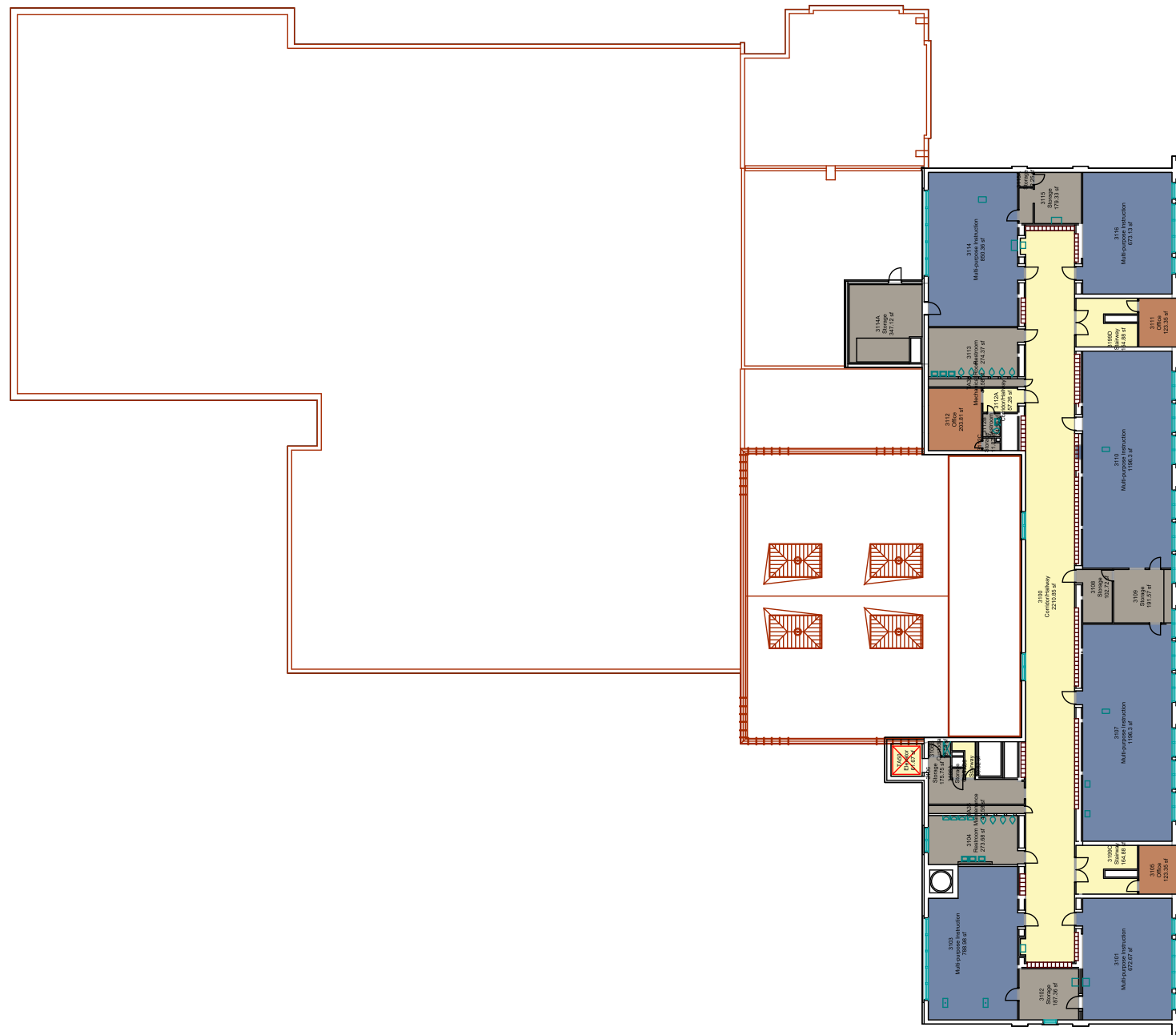


- General Learning
- Science
- Performing Arts
- Career & Tech Education
- Media Center
- Dining
- Athletics
- Circulation
- Facilities Support
- Administration
- Art

SECOND FLOOR

Ramsey Middle School

Existing Utilization



THIRD FLOOR

3140 (

3.4

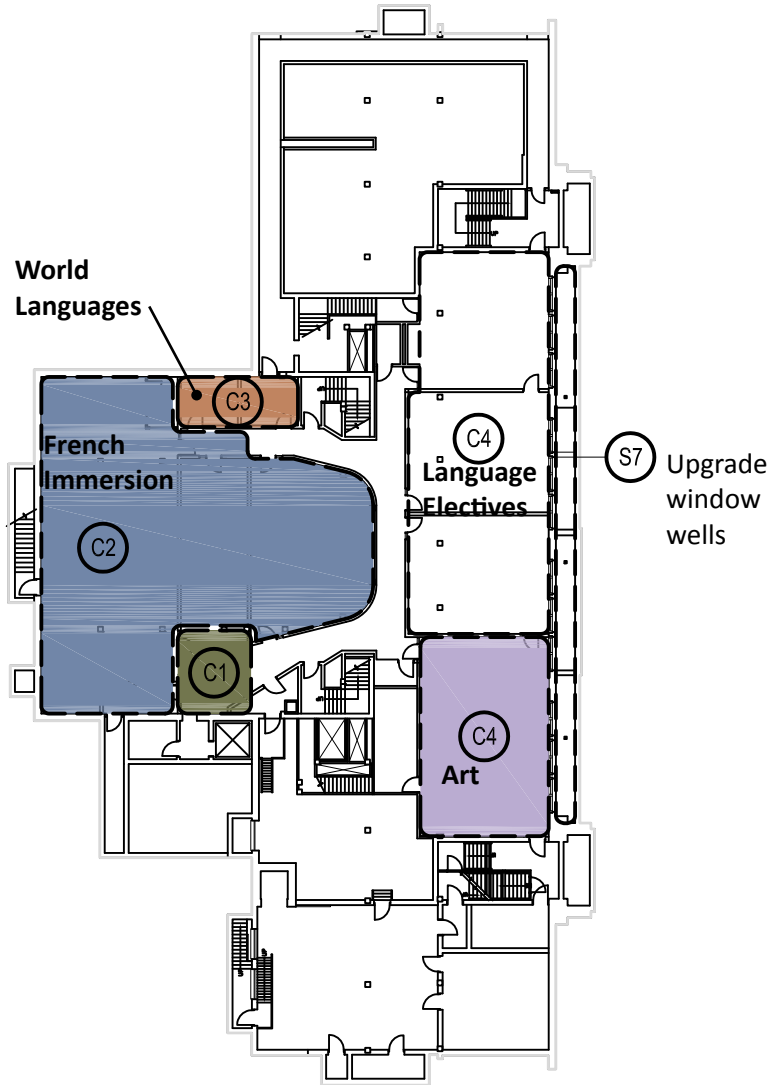
- General Learning
- Science
- Performing Arts
- Career & Tech Education
- Media Center
- Dining
- Athletics
- Circulation
- Facilities Support
- Administration
- Art

Ramsey Middle School

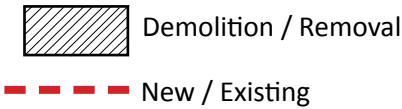
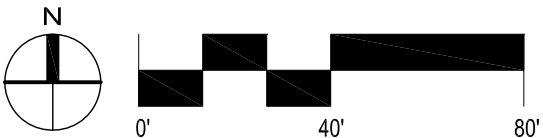
Conceptual Utilization Plan

Legend:

C1.	New French Immersion Entry 'Cafe'	(265 SF)
C2.	New Instructional Space	(3,416 SF)
C3.	New Offices	(262 SF)
C4.	Instructional Space upgrades	(3,368 SF)



BASEMENT FLOOR



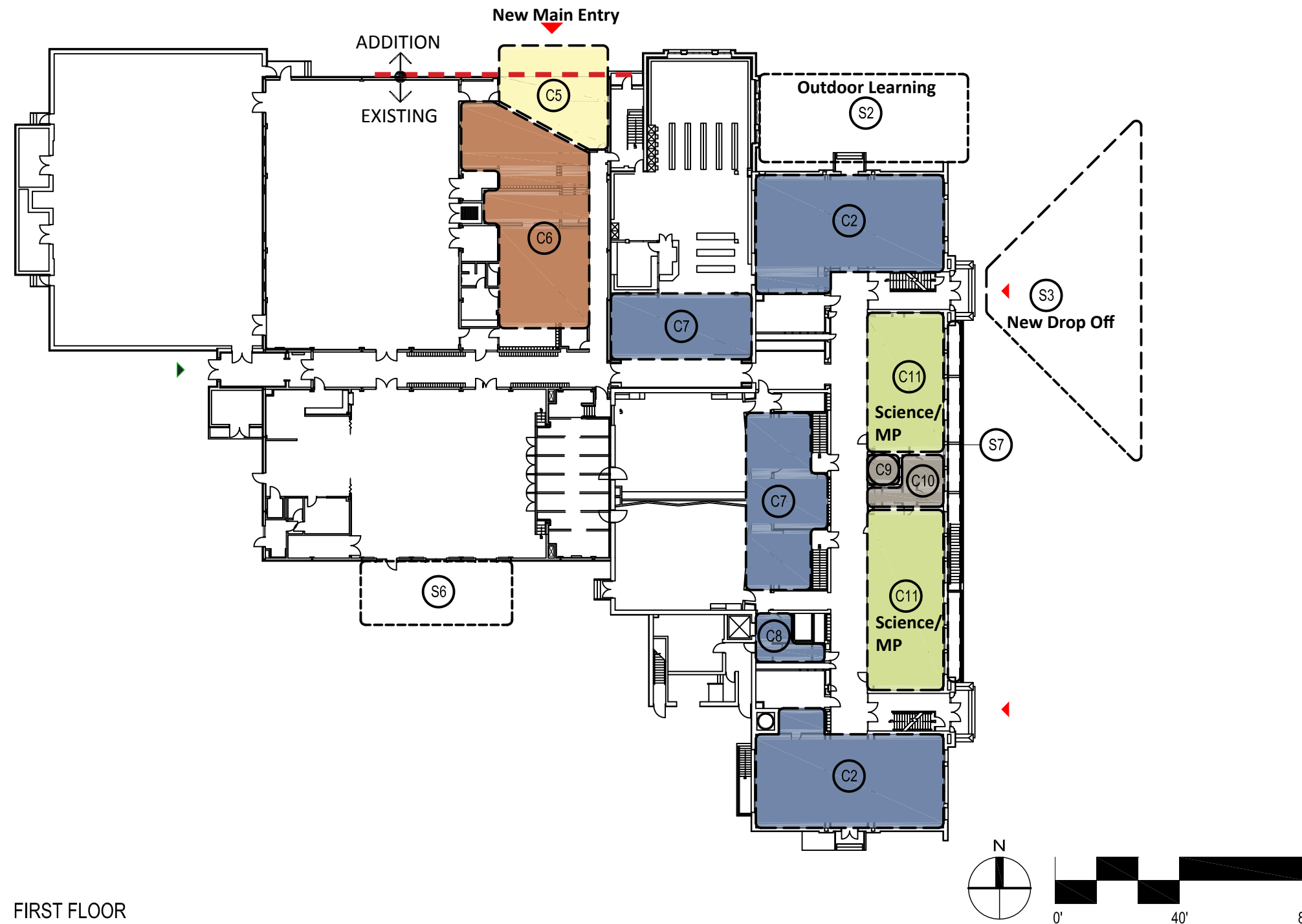
- General Learning
- Science
- Performing Arts
- Career & Tech Education
- Media Center
- Dining
- Athletics
- Circulation
- Facilities Support
- Administration
- Art

Ramsey Middle School

Conceptual Utilization Plan

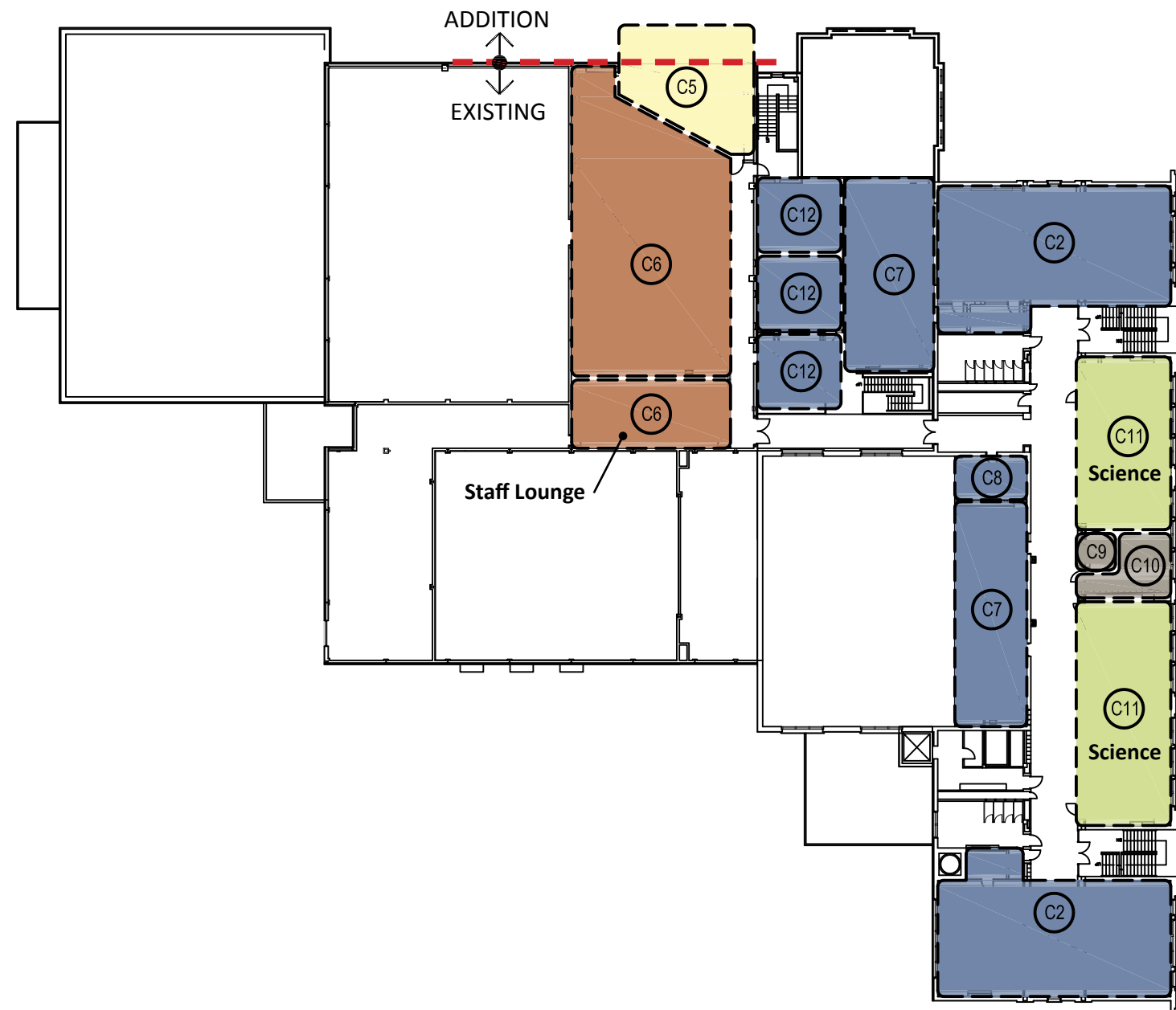
Legend:

C2.	New Instructional Suite	(3,995 SF)
C5.	New 2-story Main Entry addition	(950 SF)
C6.	New Administration Offices	(2,185 SF)
C7.	New Instructional Space	(2,250 SF)
C8.	Intervention Office	(250 SF)
C9.	New Restroom	(100 SF)
C10.	New Science Storage	(300 SF)
C11.	Reconfigure existing Instructional Spaces for Science	(2,520 SF)




Ramsey Middle School


Conceptual Utilization Plan



Legend:

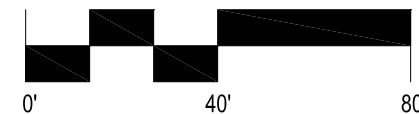
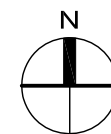
C2.	New Instructional Space	(3,992 SF)
C5.	New 2-story Main Entry addition	(See 4.2)
C6.	Relocate Administration Offices	(3,610 SF)
C7.	New Instructional Space	(2,250 SF)
C8.	Intervention Office	(212 SF)
C9.	New Restroom	(100 SF)
C10.	New Science Storage	(300 SF)
C11.	Reconfigure existing Instructional Spaces for Science	(2,520 SF)
C12.	Special Education Instructional Spaces	(1,295 SF)

 Demolition / Removal

 New / Existing

	General Learning
	Science
	Performing Arts
	Career & Tech Education
	Media Center
	Dining
	Athletics
	Circulation
	Facilities Support
	Administration
	Art

SECOND FLOOR

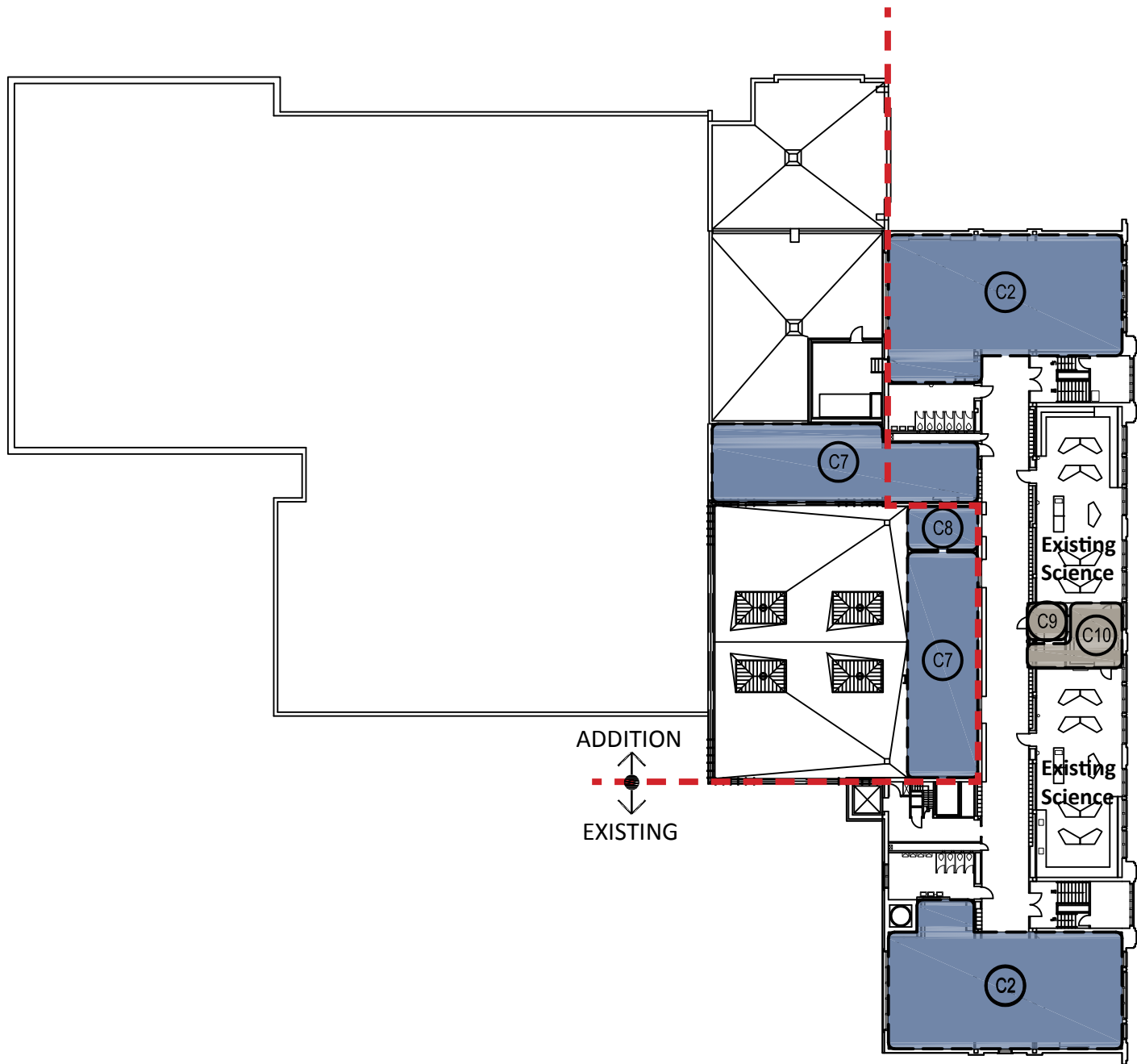


Ramsey Middle School

Conceptual Utilization Plan

Legend:

C2.	New Instructional Suite	(3,994 SF)
C7.	New Instructional Space	(2,330 SF)
C8.	Intervention Office	(205 SF)
C9.	New Restroom	(100 SF)
C10.	New Science Storage	(400 SF)



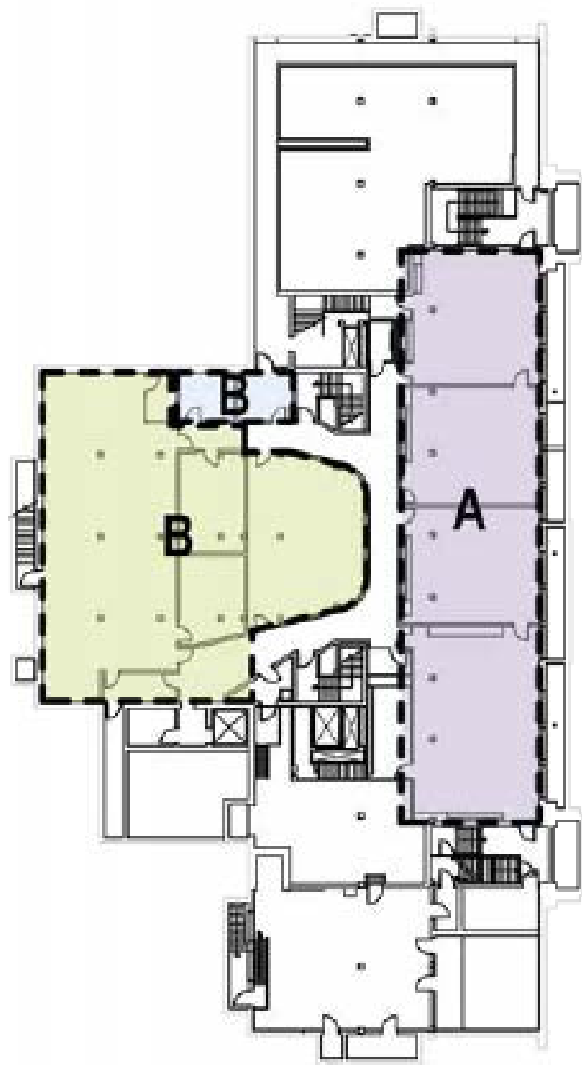
ADDITION
↑
↓
EXISTING

Demolition / Removal
New / Existing

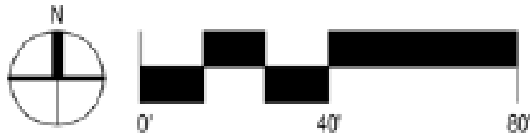
- General Learning
- Science
- Performing Arts
- Career & Tech Education
- Media Center
- Dining
- Athletics
- Circulation
- Facilities Support
- Administration
- Art

Ramsey Middle School

Conceptual Construction Plan











BASEMENT FLOOR



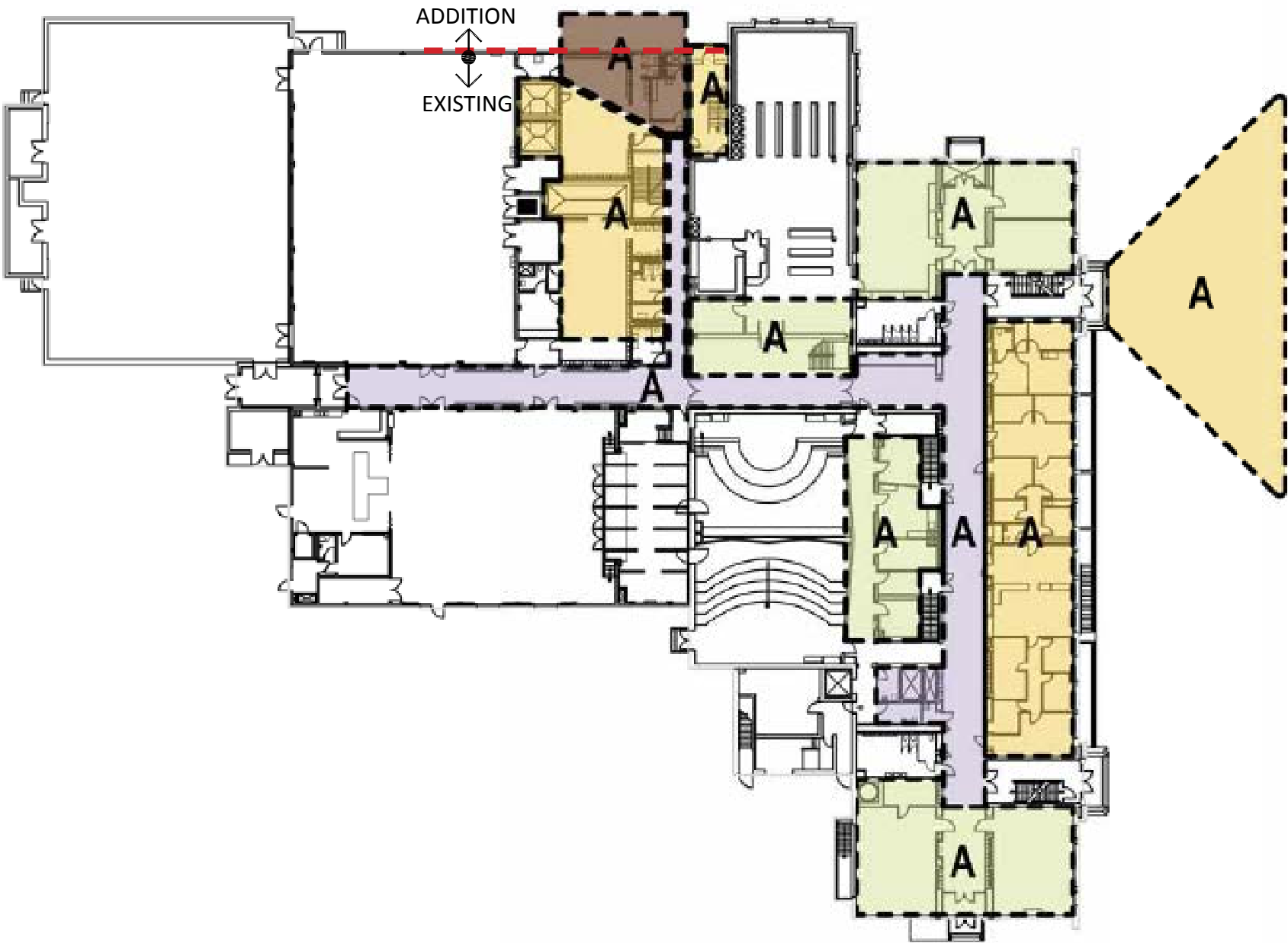
Scope Package	New Construction	Heavy Re-model	Medium Re-model	Light Remodel	Finishes Only
A					3,562 SF
B			3,735 SF	262 SF	
TOTAL			3,735 SF	262 SF	3,562 SF

Line Items	Unit	Lump Sum

-  Demolition / Removal
-  New / Existing
-  New Construction
-  Heavy Remodel
-  Medium Remodel
-  Light Remodel
-  Finishes Only
-  No Work

Ramsey Middle School









Conceptual Construction Plan



FIRST FLOOR

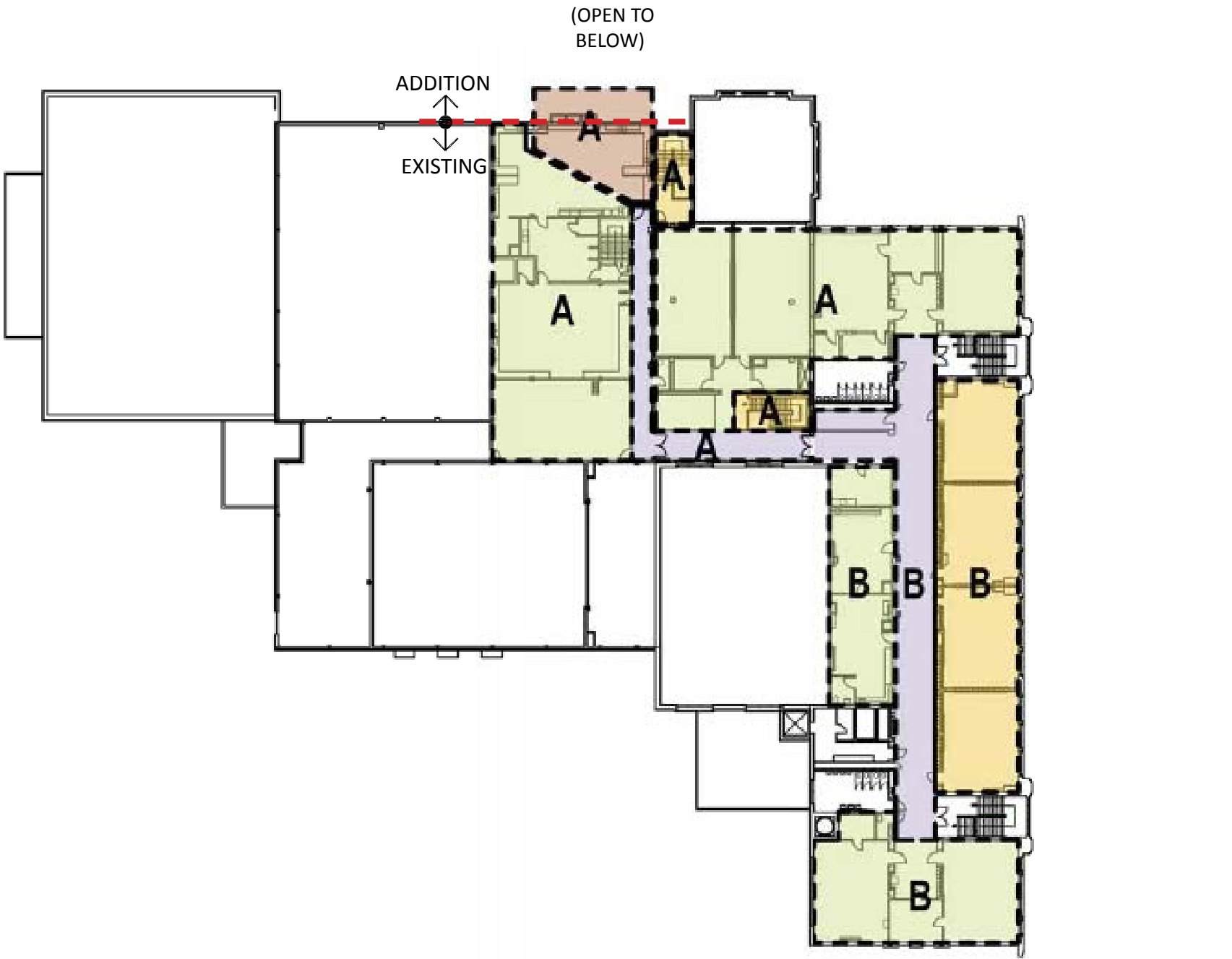
Scope Package	New Construction	Heavy Remodel	Medium Remodel	Light Remodel	Finishes Only
A	948 SF	8,783 SF	6,320 SF		4,218 SF
B					
TOTAL	948 SF	8,783 SF	6,320 SF		4,218 SF

Line Items	Unit	Lump Sum

-  Demolition / Removal
-  New / Existing
-  New Construction
-  Heavy Remodel
-  Medium Remodel
-  Light Remodel
-  Finishes Only
-  No Work

Ramsey Middle School

Conceptual Construction Plan



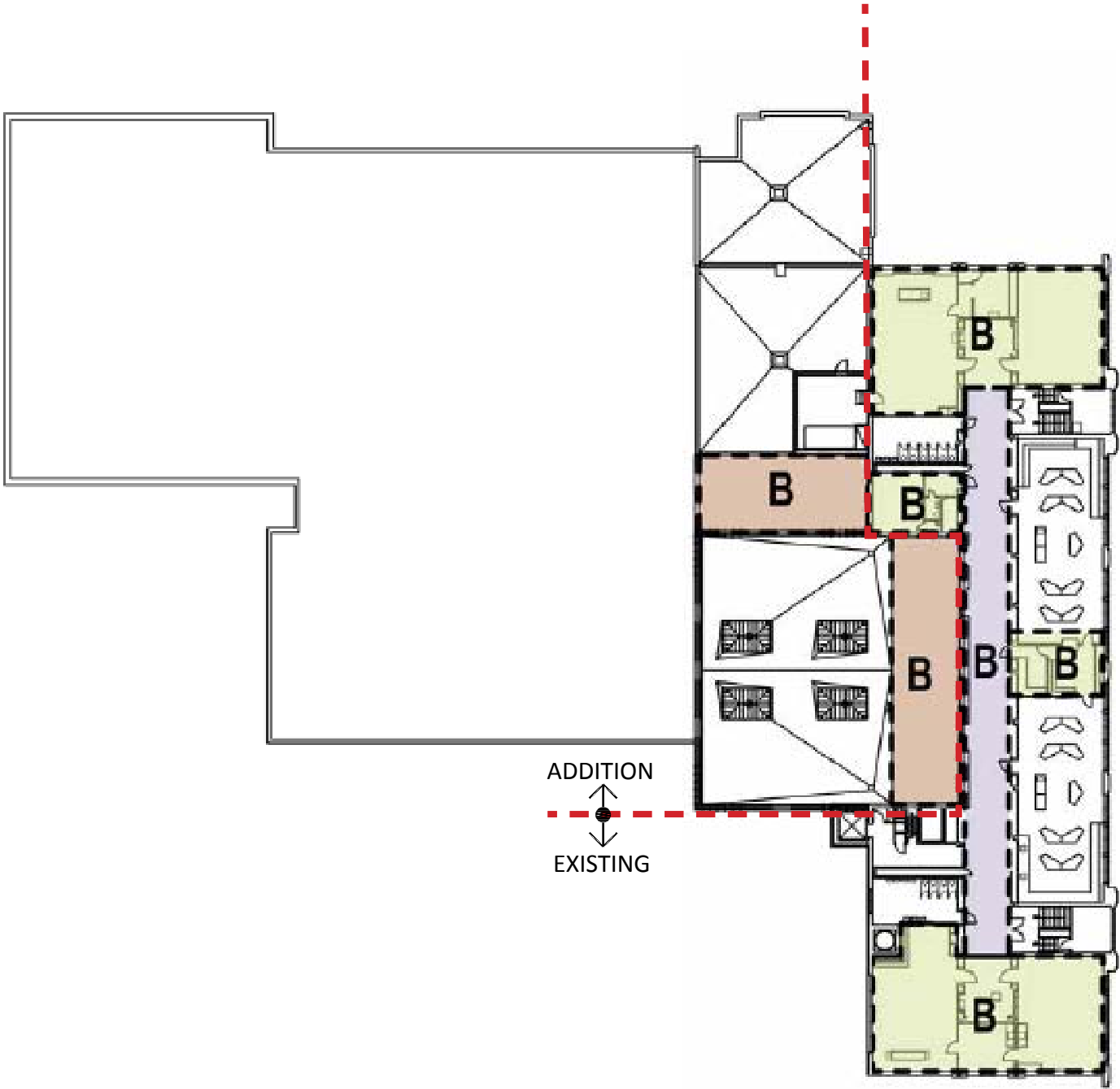
SECOND FLOOR

Scope Package	New Construction	Heavy Remodel	Medium Remodel	Light Remodel	Finishes Only
A	947 SF	527 SF	8,130 SF		864 SF
B		2,930 SF	3,340 SF		2,112 SF
TOTAL	947 SF	3,457 SF	11,470 SF		2,976 SF

Line Items	Unit	Lump Sum

Ramsey Middle School









Conceptual Construction Plan



THIRD FLOOR

Scope Package	New Construction	Heavy Remodel	Medium Remodel	Light Remodel	Finishes Only
A					
B	2,170 SF		4,777 SF		1,753 SF
TOTAL	2,170 SF		4,777 SF		1,753 SF

Line Items	Unit	Lump Sum

-  Demolition / Removal
-  New / Existing
-  New Construction
-  Heavy Remodel
-  Medium Remodel
-  Light Remodel
-  Finishes Only
-  No Work