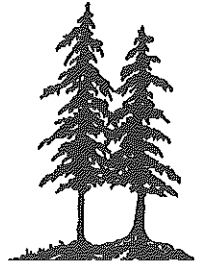


Midwest  
Environmental  
Consulting, L.L.C.



 Printed on Recycled Paper

**Frost Lake Magnet School of Technology  
Saint Paul Public Schools**

**Lead-Based Paint Inspection**

**Inspection Dates: 4/7/97, 4/8/97, 4/10/97, 4/13/97**

**submitted to:**

**Saint Paul Public Schools**

**MEC Project # 62/0197V**

---

38894 Llama Street NW \* Dalbo, Minnesota 55017 \* (612) 689-3612  
fax (612) 689-5209

## INTRODUCTION

At the request of Saint Paul Public Schools Environmental Safety Department, Midwest Environmental Consulting, L.L.C. (MEC), conducted a lead-based paint inspection at Frost Lake Magnet School of Technology, 1505 E. Hoyt Avenue, St. Paul, MN. The purpose of this inspection was to identify lead-based painted, varnished, or otherwise coated building components on the interior and exterior of the school building.

The inspection protocol incorporated applicable portions of the U.S. Department of Housing and Urban Development (HUD) *Guidelines for the Evaluation and Control of Lead-based Paint Hazards in Housing* (HUD Guidelines, June 1995) and OSHA 1926.62 requirements (Lead in Construction). The HUD guidelines are formulated to guide agencies in conducting random sampling of the interiors and exteriors of dwellings and common areas in public housing. The OSHA requirement is designed to minimize worker exposure when working with material containing lead.

Confirmatory testing was conducted when inconclusive XRF results were encountered. Inconclusive refers to XRF readings less than 0.2 mg/cm<sup>2</sup> (milligrams per square centimeter). Inconclusive results were confirmed with laboratory analysis of paint chip samples (Appendix B). This report contains a list of such results.

The United States Environmental Protection Agency defines "lead-based paint" as a paint or other surface coating that contains lead equal to or in excess of 1.0 milligrams per square centimeter when analyzed by XRF or more than 0.5% by weight (5000 parts per million) by laboratory analysis of a bulk sample.

Minnesota Department of Labor and Industry (MN OSHA) adopted the EPA lead levels for the purpose of enforcing OSHA 1926.62 federal regulations. Detection of lead in dried paint film by XRF is a dependable indicator of levels of lead and is accepted by MN OSHA.

For this Saint Paul Public Schools Lead Inspection, all building components were tested on site using a Niton XL® X-ray Fluorescence Spectrum Analyzer<sup>(1)</sup>. Building components included walls, ceilings, floors, moldings, window and door components, door surfaces, and miscellaneous features such as shelves or bookcases. Only painted or glazed surfaces or surfaces which were varnished were tested. Suspended ceilings, structural steel, and corrugated decking were not included in the inspection. Neither anodized (e.g., window sashes) nor plastic (e.g., vinyl baseboard and vinyl mini-blinds) were included in the scope of this inspection.

---

<sup>(1)</sup> This is a portable hand held machine that can analyze building components instantly for lead concentrations.

Each building was divided into unique sites based on the year of construction or renovation. Portable classrooms, playgrounds, and other detached buildings were automatically designated as a unique site. Each site was inspected independently assuming differences in painting history and construction characteristics.

## SITE DESCRIPTION AND BUILDING HISTORY

According to information provided to MEC by Saint Paul Public Schools, Frost Lake Magnet School of Technology was constructed in essentially five phases. The initial phase includes the 28,577 square-foot older section of the building and dates from 1964. The second phase is a 9,133 square foot addition dating from 1966. The third phase is a 1,000 square foot addition from 1967. In 1973 a recreation addition was added. A 10,496 square foot addition was added in 1990, and the fifth phase is an addition of 5,840 square feet dating from 1994.

For the purpose of this inspection, the 1964, 1965 and 1967 phases are considered to be site 1. The 1973 phase is site 2.

The 1990 and 1994 phases were not inspected.

All room and area designations used in this report are depicted on sampling maps found in Appendix A.

## XRF SAMPLE RESULTS TABLE

The results of all samples analyzed are listed in the table at the end of this section. The following is a description of the column headings:

<b>Site</b>	Each school is divided into sites based on their unique construction characteristics. Each site has a unique date of construction or major renovation.
<b>Sample #</b>	Each sample taken was given a unique number to identify the type and location of the sample. The sampling date is an integral part of the sample number.
<b>Analysis</b>	This defines the type of analysis which can be categorized into two types:  1) XRF: This is an on-site analysis using a hand held Niton XL® X-ray Fluorescence Spectrum Analyzer; 2) Bulk or Chip: This is a bulk sample where paint is removed from the substrate and sent to a laboratory for analysis;

<b>Floor</b>	This is the level of the building in which the area tested was found, example, 1 (first floor), 0 (basement), etc.
<b>Area</b>	This further defines the specific functional space inspected such as a classroom, exterior, playground, gym, kitchen, etc.
<b>Room #</b>	This is typically the actual number on the room as identified at the building.
<b>Component</b>	Building "components" included walls, ceilings, floors, moldings, window and door components, door surfaces, and miscellaneous features such as shelves or bookcases.
<b>Feature</b>	Identifies more detailed information of the component.
<b>Condition</b>	This describes condition of the surface, whether it is intact, cracked, peeling, or chalking.
<b>Substrate</b>	This refers to the material the building component is made of (wood, concrete, drywall, metal, etc.).
<b>Result</b>	This is the analysis results for lead. Less than 1.0 mg/cm <sup>2</sup> or less than 0.5% by weight is considered to be non-lead and these building components are below the action levels of EPA and HUD. (All results are in mg/cm <sup>2</sup> except where noted.)

The table of results is designed for quick information on lead concentrations of tested building components. Generally, all repetitions of a test combination within a given room or area, may be assumed to contain similar concentrations of lead to that of the tested sample. For instance, the lead concentration of a tested wooden window sash was found to be above the action level of 1.0 mg/cm<sup>2</sup> in a given classroom. The classroom has five windows, all of wood, the same color and appearing to be of the same era. It can be assumed that the remaining four wooden window sashes each contain lead above the action limit.

Other columns identify the component and the component feature tested, condition of the component, type of substrate and the result of the analytical test.

As an example, the following illustration shows that the wooden door jamb in Room 123, first floor in the 1923 building section was in good, solid condition, and had an XRF test result of 0.3 mg/cm<sup>2</sup>, which is below the action level.

**Illustration Only**

Site	Sample #	Date	Analysis	Floor	Area	Room #	Component	Feature	Condition	Substrate	Results
1923 Bldg.	52		XRF	1	Room	123	Door	Jamb	Solid	Wood	0.3

In a similar manner, the table shows that the plaster walls in room 23, on the second floor has peeling paint with more than 1.0 mg/cm<sup>2</sup> (shaded).

**ILLUSTRATION ONLY**

Site	Sample #	Date	Analysis	Floor	Area	Room #	Component	Feature	Condition	Substrate	Results
1910 Bldg.	16		XRF	2	Room	23	Door	Jamb	Peeling	Wood	0.25
1910 Bldg.	17		XRF	2	Room	23	Wall	Wall	Peeling	Plaster	1.2
1910 Bldg.	18		XRF	2	Room	23		Ceiling	Peeling	Plaster	0.25
1910 Bldg.	19		XRF	2	Room	23	Wall	Baseboard	Peeling	Wood	0.002

**APPLICABLE REGULATIONS**

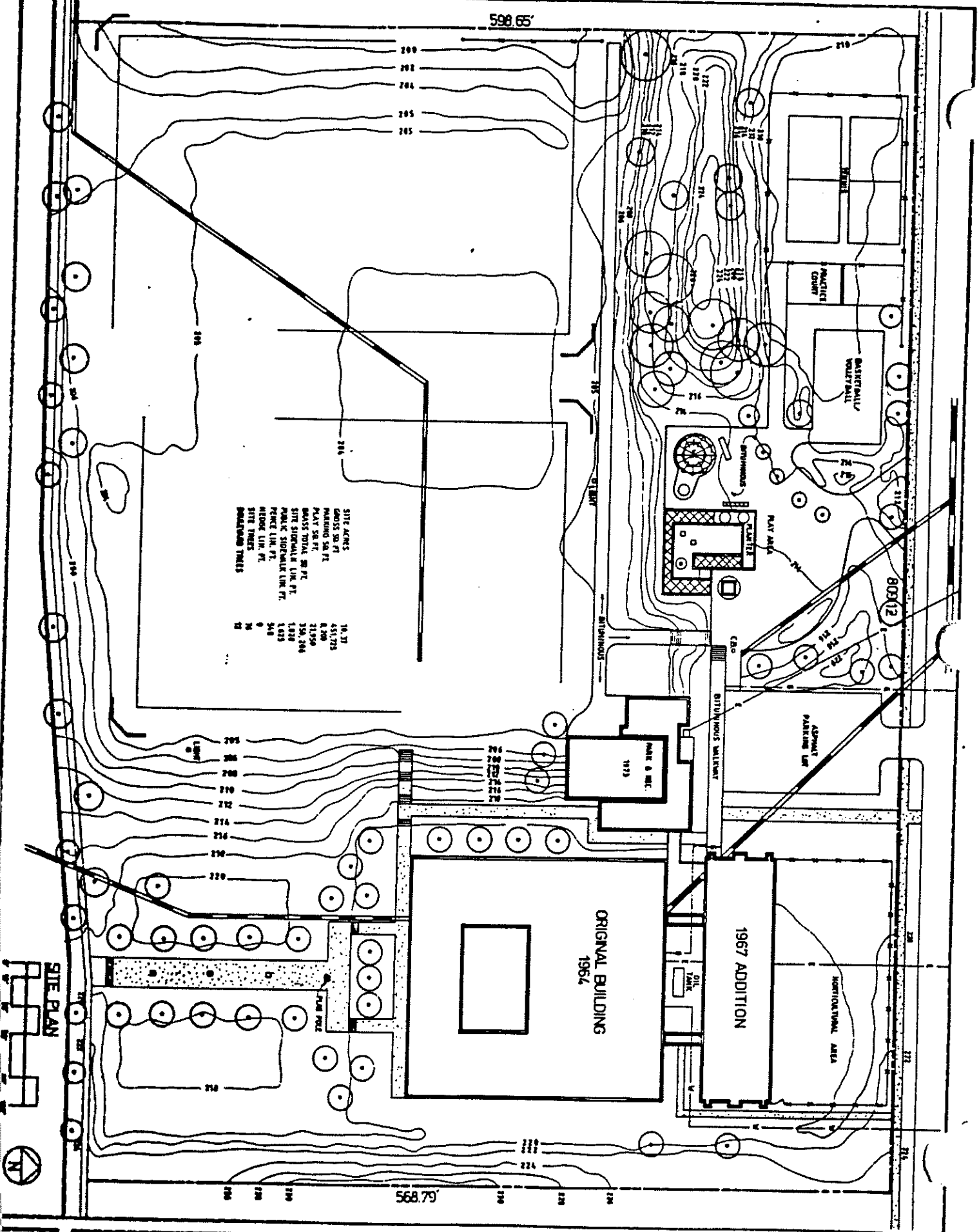
When building components test above 1.0 mg/cm<sup>2</sup> of lead by XRF or 0.5% lead by weight from laboratory analysis all employees and contractors who will be working with these components in a construction related activity must be notified. The requirements of OSHA 1926.62, Lead in Construction are enforceable. This regulation defines construction work as "work for construction, alteration and/or repair, including painting and decorating." This regulation further defines monitoring requirements to minimize employee exposure to lead during construction activities.

When work is performed on external painted building structures (i.e. flashing, fire escapes, playground equipment, handrails, etc.), regulations of the Minnesota Pollution Control Agency (MPCA) may also be applicable. For removal of lead based paint from steel structures, MN Rules 7025.0200 - 7025.0380 apply to steel materials on the exterior of a building, or on the property when levels exceed 0.5 mg/cm<sup>2</sup> based on the average of three XRF spectrum results of the sample tested, or 5,000 ppm by laboratory analysis. If it is other than a steel surface, then MPCA regulates the painted surfaces under MN Rules 7025.010 - 7025.0080, when surfaces are to be disturbed using abrasive blasting methods.

Please contact MEC directly if you have questions about any portion of this report or the lead-based paint inspection itself.

# APPENDIX A

## XRF TESTING DATA WITH LOCATION MAPS



SITE AREAS

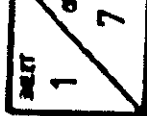
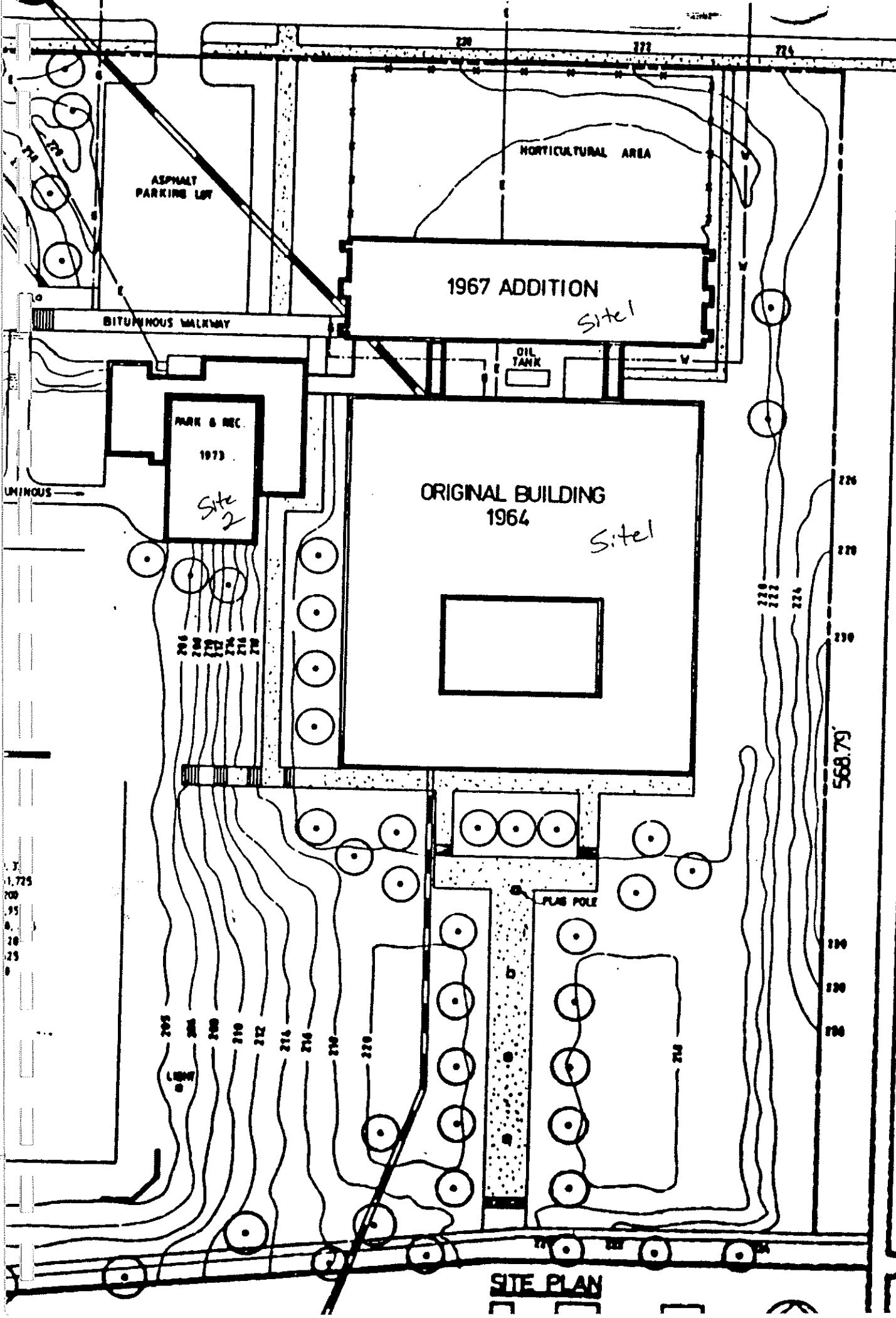
GROSS SQ. FT.	14,371
PARKING SQ. FT.	4,517/25
PLAY SQ. FT.	6,200
BASE TOTAL SQ. FT.	21,070
SITE SIGNAGE SQ. FT.	736,304
PLANT SIGNAGE SQ. FT.	1,000
PERCENT SIGNAGE SQ. FT.	4.83
WATER SQ. FT.	548
SITE TREES	0
PLANTING TREES	28

INDEPENDENT SCHOOL DIST. #625  
 380 COLBORNE STREET  
 ST. PAUL, MINNESOTA 55102

FROST LAKE ELEMENTARY  
 HAZELWOOD & HOYT AVE.  
 ST. PAUL, MINNESOTA 55106

CONSTRUCTED: 1964, 66, 67

MEET  
 1  
 7



CONSTRUCTED: 1964, 66, 67

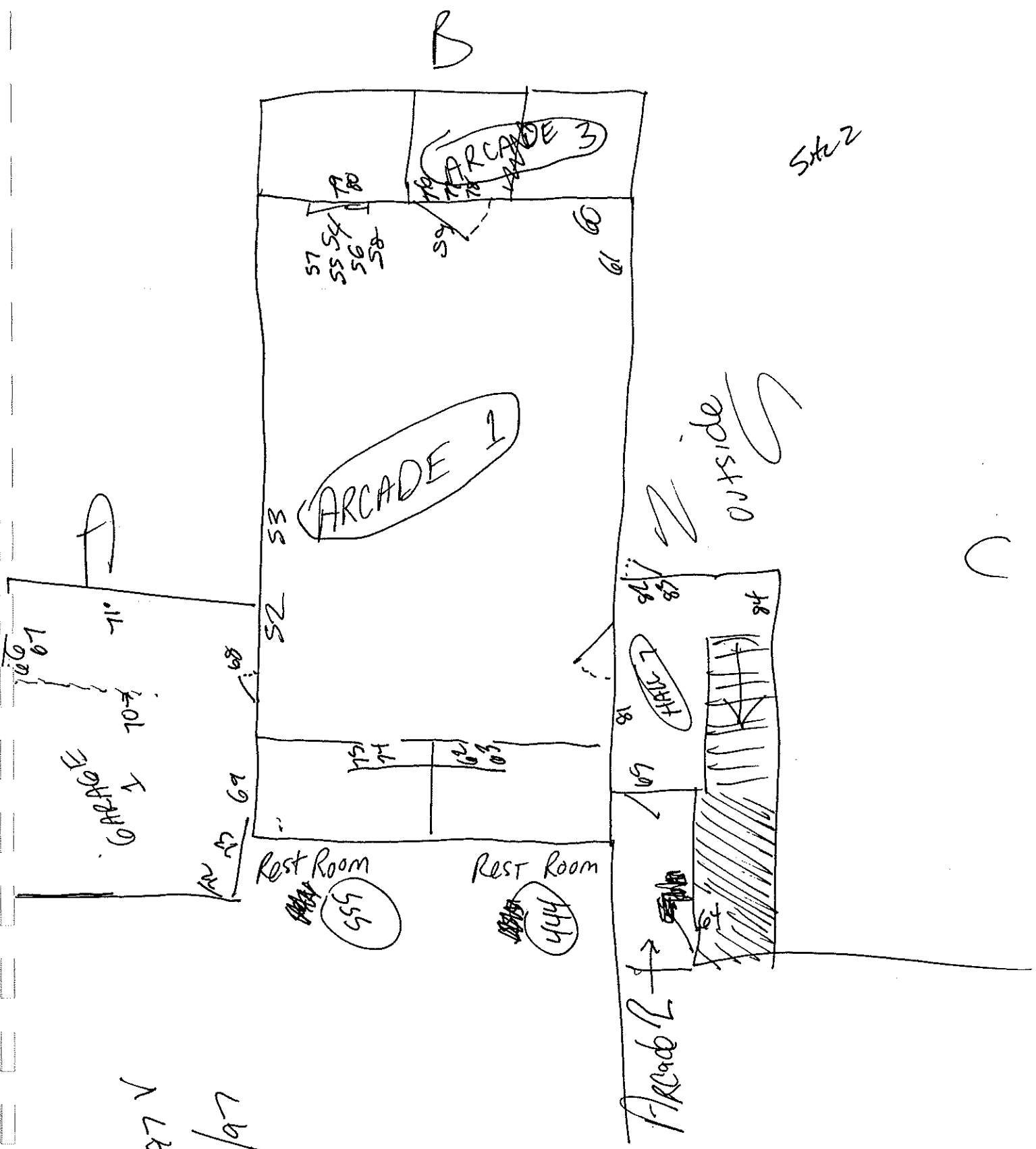
FROST LAKE ELEMENTARY  
HAZELWOOD & HOYT AVE.  
ST. PAUL, MINNESOTA 55106

INDEPENDENT SCHOOL DIST. #625  
380 COLBORNE STREET  
ST. PAUL, MINNESOTA 55102

**SITE PLAN**



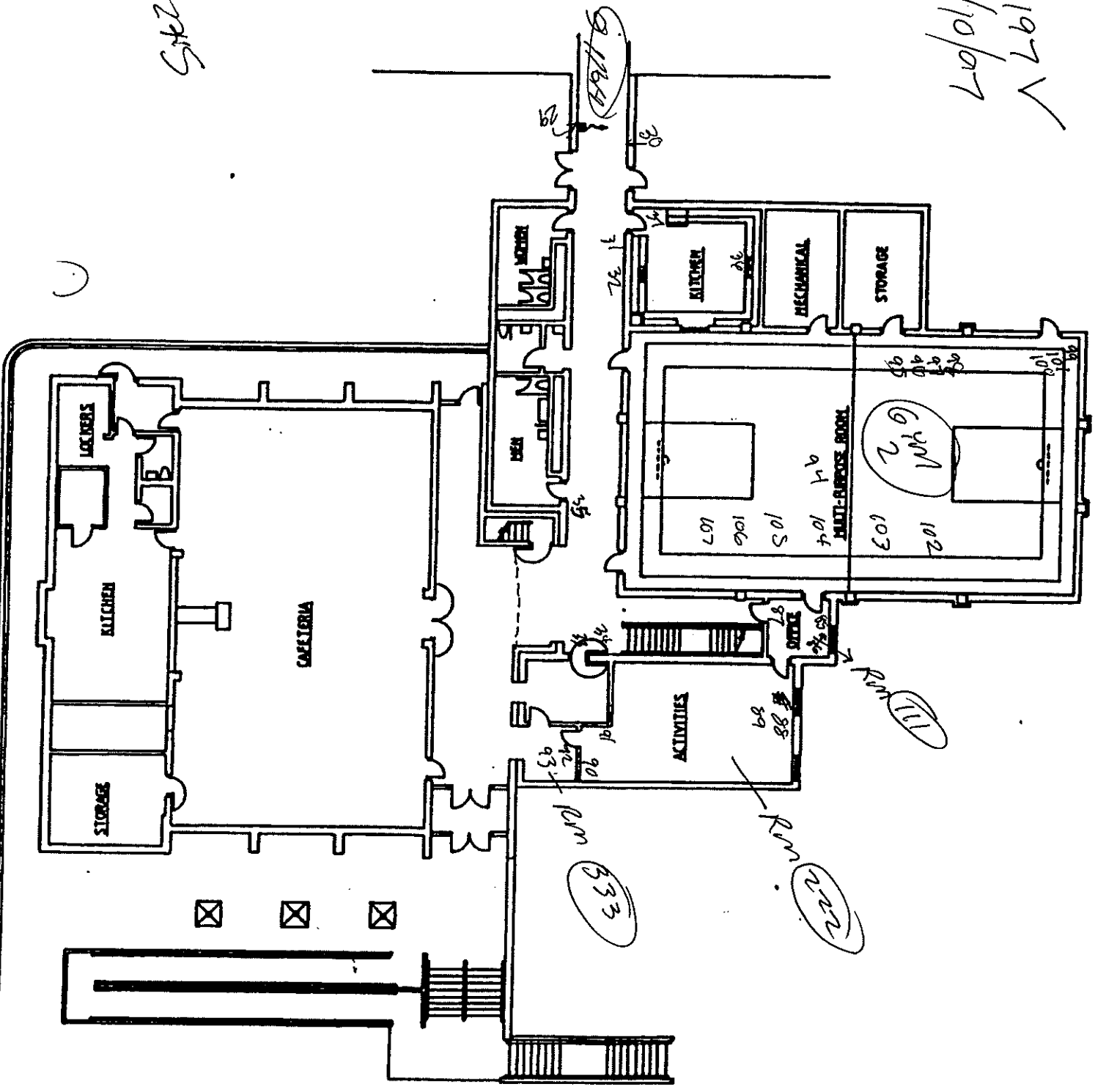
62-197 ✓  
4/10/97



D

62-197 V  
4/10/77

Site 2

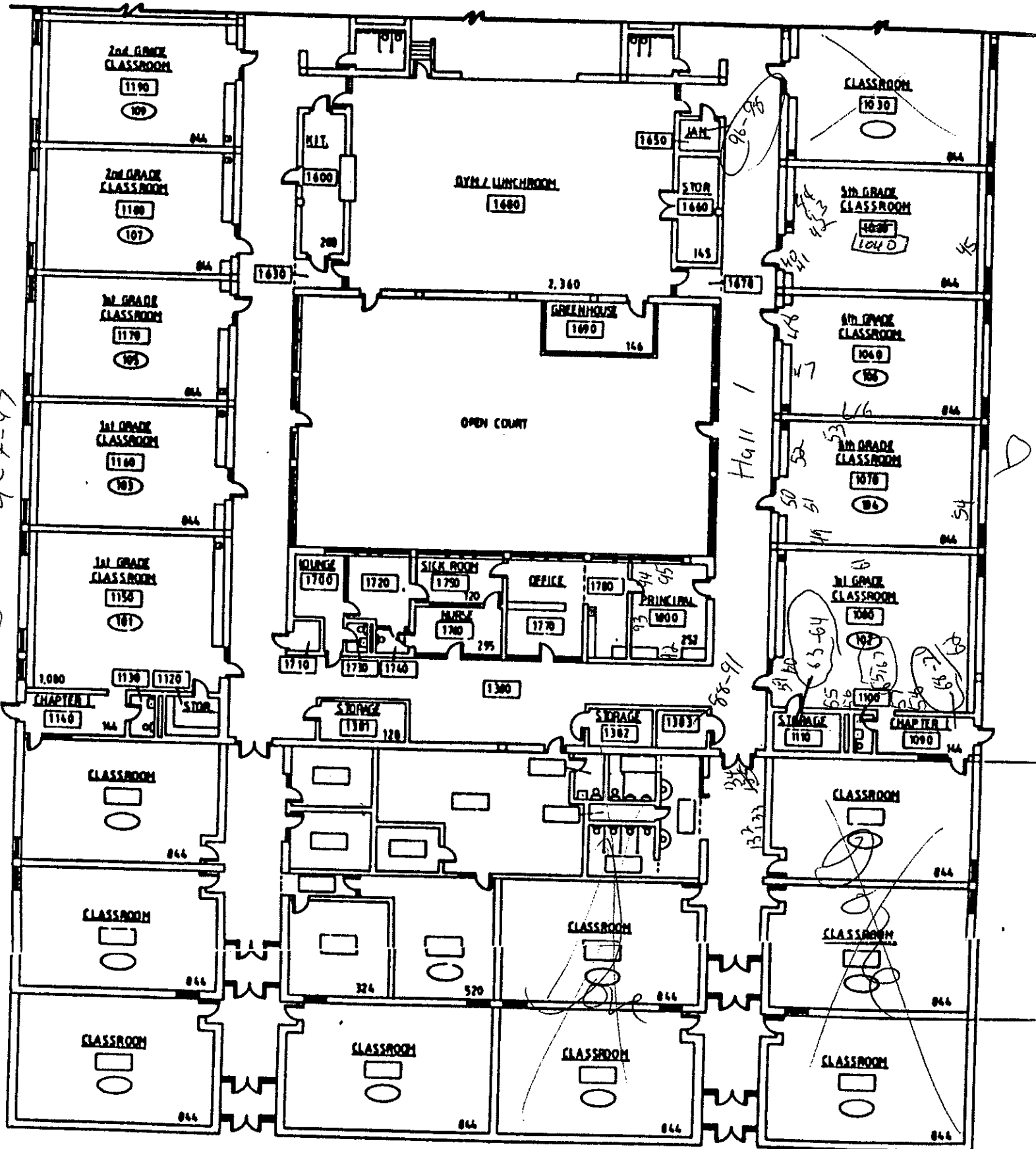


62-197 V  
4-10-77

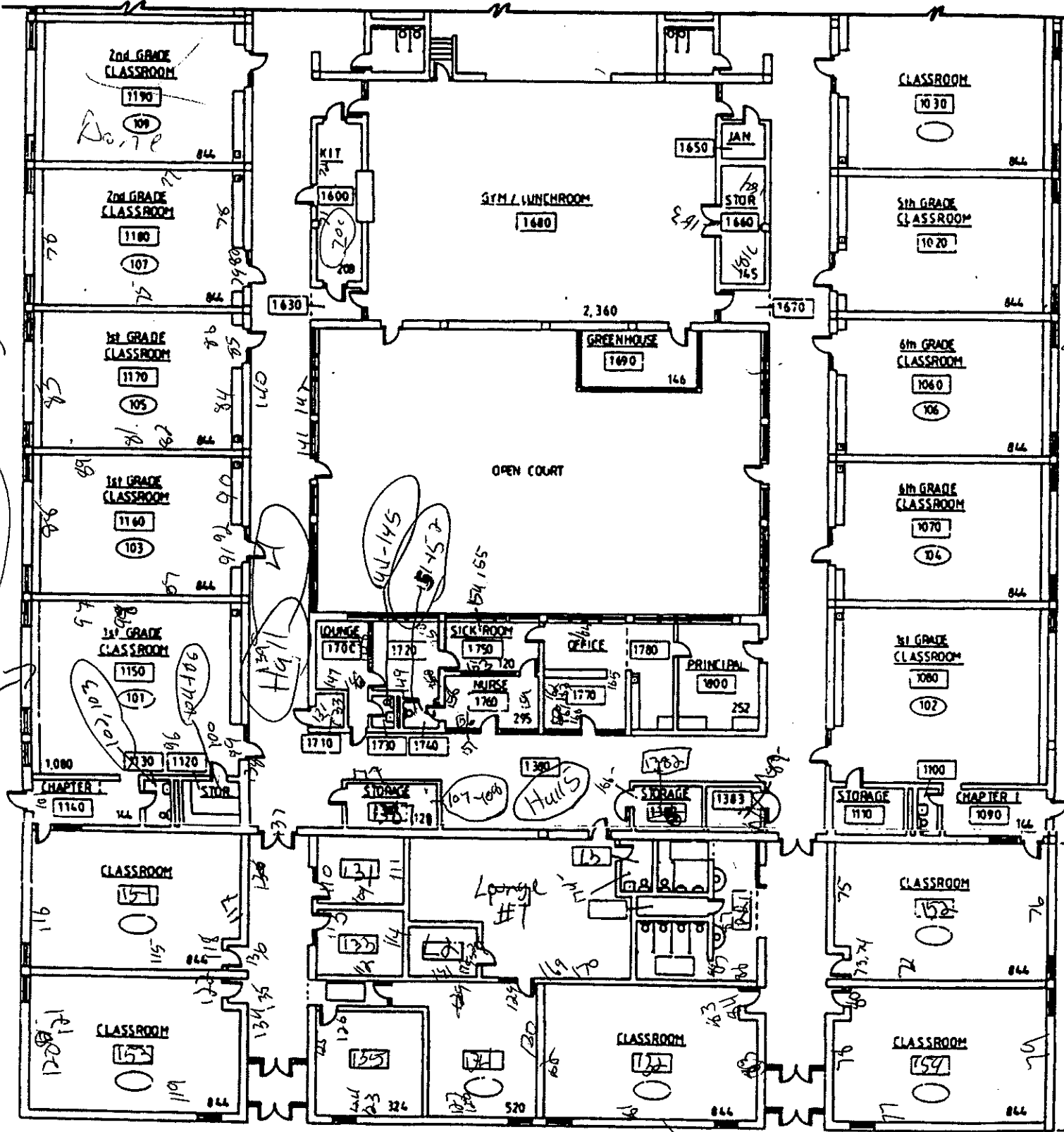
3

7

4-7-97



FIRST FLOOR SOUTH



4-7-97  
1-85-7

56-27

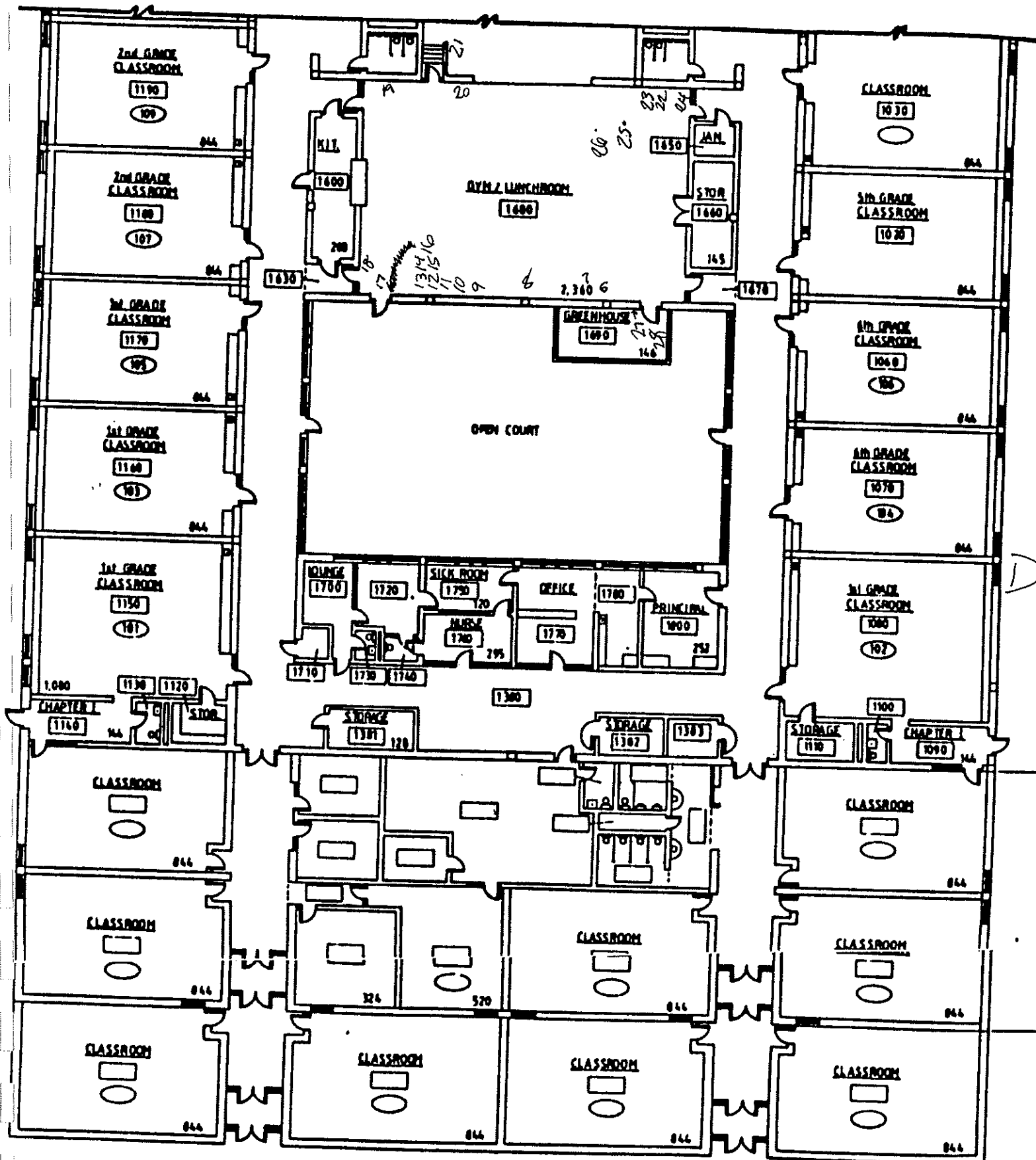
# FIRST FLOOR SOUTH

62-197 V

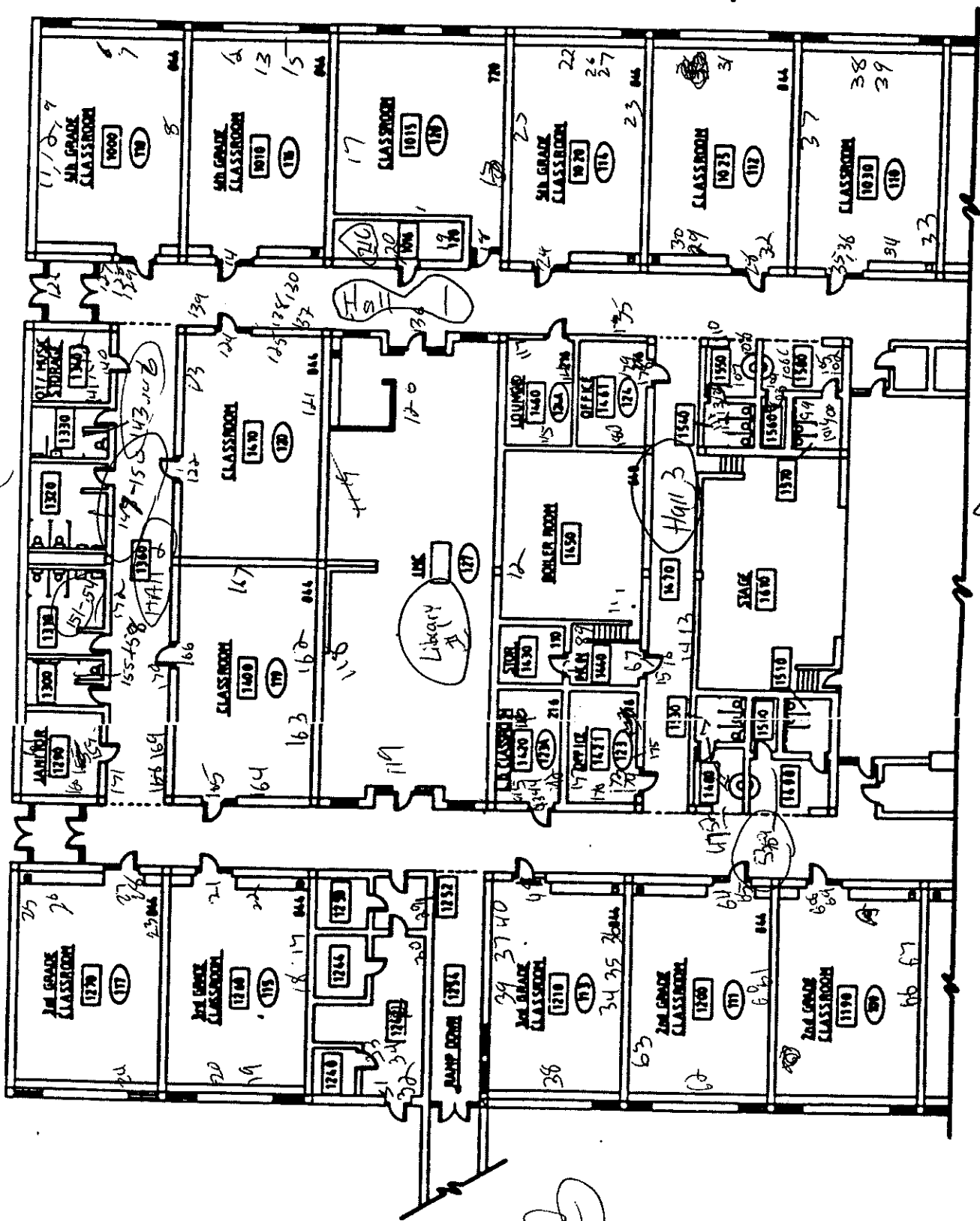
FROST LAKE

4-10-97

C



A



B

A

C

Saint Paul Public Schools  
 Frost Lake Magnet School of Technology  
 Lead-Based Paint Inspection

	A	B	C	D	E	F	G	H	I	J	K	L
1	Frost Lake Magnet School of Technology											
2												
3	Site	Sample#	Analysis	Date	Floor	Area	Room#	Structure	Feature	Condition	Substrate	Result
4	1964, 1966, 1967	109	XRF	4/8/97	1	Classroo	131	Wall	Midle Wall	Solid	Concrcte	0.01
5	1964, 1966, 1967	110	XRF	4/8/97	1	Classroo	131	Door	Casing	Solid	Metal	0
6	1964, 1966, 1967	111	XRF	4/8/97	1	Classroo	131	Wall	Midle Wall	Solid	Concrcte	0
7	1964, 1966, 1967	81	XRF	4/7/97	1	Classroo	132		Radiator	Solid	Metal	0
8	1964, 1966, 1967	82	XRF	4/7/97	1	Classroo	132	Wall	Midle Wall	Solid	Concrcte	0
9	1964, 1966, 1967	83	XRF	4/7/97	1	Classroo	132	Door	Casing	Solid	Metal	0.11
10	1964, 1966, 1967	84	XRF	4/7/97	1	Classroo	132	Door	Header	Solid	Drywall	0
11	1964, 1966, 1967	112	XRF	4/8/97	1	Classroo	133	Wall	Midle Wall	Solid	Concrcte	0
12	1964, 1966, 1967	113	XRF	4/8/97	1	Classroo	133	Door	Casing	Solid	Metal	0.01
13	1964, 1966, 1967	114	XRF	4/8/97	1	Classroo	133	Wall	Wall	Solid	Concrcte	0.05
14	1964, 1966, 1967	127	XRF	4/8/97	1	Classroo	134	Wall	Wall	Solid	Concrcte	0
15	1964, 1966, 1967	128	XRF	4/8/97	1	Classroo	134		Radiator	Solid	Metal	0
16	1964, 1966, 1967	129	XRF	4/8/97	1	Classroo	134	Door	Casing	Solid	Metal	0.02
17	1964, 1966, 1967	130	XRF	4/8/97	1	Classroo	134	Wall	Midle Wall	Solid	Concrcte	0
18	1964, 1966, 1967	123	XRF	4/8/97	1	Classroo	135	Wall	Midle Wall	Solid	Concrcte	0.07
19	1964, 1966, 1967	124	XRF	4/8/97	1	Classroo	135		Radiator	Solid	Metal	0.02
20	1964, 1966, 1967	125	XRF	4/8/97	1	Classroo	135	Coat Rack		Solid	Wood	0
21	1964, 1966, 1967	126	XRF	4/8/97	1	Classroo	135	Door	Casing	Solid	Metal	0.06
22	1964, 1966, 1967	115	XRF	4/8/97	1	Classroo	151	Wall	Midle Wall	Solid	Concrcte	0
23	1964, 1966, 1967	116	XRF	4/8/97	1	Classroo	151		Radiator	Solid	Metal	0.02
24	1964, 1966, 1967	117	XRF	4/8/97	1	Classroo	151	Wall	Wall	Solid	Concrcte	0
25	1964, 1966, 1967	118	XRF	4/8/97	1	Classroo	151	Door	Casing	Solid	Metal	0.01
26	1964, 1966, 1967	72	XRF	4/7/97	1	Classroo	152	Wall	Wall	Solid	Concrcte	0
27	1964, 1966, 1967	73	XRF	4/7/97	1	Classroo	152	Door	Casing	Solid	Metal	0.01
28	1964, 1966, 1967	74	XRF	4/7/97	1	Classroo	152	Wall	Wall	Solid	Drywall	0
29	1964, 1966, 1967	75	XRF	4/7/97	1	Classroo	152	Wall	Wall	Solid	Concrcte	0.02
30	1964, 1966, 1967	76	XRF	4/7/97	1	Classroo	152		Radiator	Solid	Metal	0
31	1964, 1966, 1967	119	XRF	4/8/97	1	Classroo	153	Wall	Wall	Solid	Concrcte	0
32	1964, 1966, 1967	120	XRF	4/8/97	1	Classroo	153	Wall	Midle Wall	Solid	Concrcte	0
33	1964, 1966, 1967	121	XRF	4/8/97	1	Classroo	153		Radiator	Solid	Metal	0.01
34	1964, 1966, 1967	122	XRF	4/8/97	1	Classroo	153	Door	Casing	Solid	Metal	0.09
35	1964, 1966, 1967	77	XRF	4/7/97	1	Classroo	154	Wall	Wall	Solid	Concrcte	0
36	1964, 1966, 1967	78	XRF	4/7/97	1	Classroo	154	Wall	Wall	Solid	Concrcte	0
37	1964, 1966, 1967	79	XRF	4/7/97	1	Classroo	154		Radiator	Solid	Metal	0
38	1964, 1966, 1967	80	XRF	4/7/97	1	Classroo	154	Door	Casing	Solid	Metal	0.19
39	1964, 1966, 1967	22	XRF	4/7/97	1	Classroo	1020	Wall	Wall	Solid	Concrcte	0
40	1964, 1966, 1967	23	XRF	4/7/97	1	Classroo	1020	Wall	Wall	Solid	Concrcte	0.16
41	1964, 1966, 1967	24	XRF	4/7/97	1	Classroo	1020	Door	Casing	Solid	Metal	0.03
42	1964, 1966, 1967	25	XRF	4/7/97	1	Classroo	1020	Wall	Midle Wall	Solid	Concrcte	0
43	1964, 1966, 1967	26	XRF	4/7/97	1	Classroo	1020	Wall	Mural	Solid	Concrcte	0.02
44	1964, 1966, 1967	27	XRF	4/7/97	1	Classroo	1020	Wall	Mural	Solid	Concrcte	0
45	1964, 1966, 1967	28	XRF	4/7/97	1	Classroo	1025	Door	Casing	Solid	Metal	0.05
46	1964, 1966, 1967	29	XRF	4/7/97	1	Classroo	1025	Wall	Midle Wall	Solid	Concrcte	0.18
47	1964, 1966, 1967	30	XRF	4/7/97	1	Classroo	1025	Wall	Wall	Solid	Concrcte	0
48	1964, 1966, 1967	31	XRF	4/7/97	1	Classroo	1025	Wall	Mural	Solid	Concrcte	0
49	1964, 1966, 1967	32	XRF	4/7/97	1	Classroo	1025	Door	Header	Solid	Metal	0
50	1964, 1966, 1967	33	XRF	4/7/97	1	Classroo	1030	Wall	Midle Wall	Solid	Concrcte	0
51	1964, 1966, 1967	34	XRF	4/7/97	1	Classroo	1030	Wall	Midle Wall	Solid	Concrcte	0.17
52	1964, 1966, 1967	35	XRF	4/7/97	1	Classroo	1030	Door	Casing	Solid	Metal	0.03
53	1964, 1966, 1967	36	XRF	4/7/97	1	Classroo	1030	Door	Header	Solid	Metal	0
54	1964, 1966, 1967	37	XRF	4/7/97	1	Classroo	1030	Wall	Wall	Solid	Concrcte	0.01
55	1964, 1966, 1967	38	XRF	4/7/97	1	Classroo	1030	Wall	Mural	Solid	Concrcte	0
56	1964, 1966, 1967	39	XRF	4/7/97	1	Classroo	1030	Wall	Mural	Solid	Concrcte	0
57	1964, 1966, 1967	40	XRF	4/7/97	1	Classroo	1040	Door	Casing	Solid	Metal	0.07
58	1964, 1966, 1967	41	XRF	4/7/97	1	Classroo	1040	Door	Header	Solid	Metal	0
59	1964, 1966, 1967	42	XRF	4/7/97	1	Classroo	1040	Wall	Midle Wall	Solid	Concrcte	0.1
60	1964, 1966, 1967	43	XRF	4/7/97	1	Classroo	1040	Wall	Wall	Solid	Concrcte	0.12

Saint Paul Public Schools  
 Frost Lake Magnet School of Technology  
 Lead-Based Paint Inspection

	A	B	C	D	E	F	G	H	I	J	K	L
3	Site	Sample#	Analysis	Date	Floor	Area	Room#	Structure	Feature	Condition	Substrate	Result
61	1964, 1966, 1967	44	XRF	4/7/97	1	Classroom	1040	Wall	Wall	Solid	Concrete	0
62	1964, 1966, 1967	45	XRF	4/7/97	1	Classroom	1040	Wall	Mural	Solid	Concrete	0.02
63	1964, 1966, 1967	46	XRF	4/7/97	1	Classroom	1060	Wall	Wall	Solid	Concrete	0.01
64	1964, 1966, 1967	47	XRF	4/7/97	1	Classroom	1060	Wall	Wall	Solid	Concrete	0.12
65	1964, 1966, 1967	48	XRF	4/7/97	1	Classroom	1060	Door	Casing	Solid	Metal	0.05
66	1964, 1966, 1967	49	XRF	4/7/97	1	Classroom	1070	Wall	Middle Wall	Solid	Concrete	0.04
67	1964, 1966, 1967	50	XRF	4/7/97	1	Classroom	1070	Door	Casing	Solid	Metal	0.03
68	1964, 1966, 1967	51	XRF	4/7/97	1	Classroom	1070	Door	Header	Solid	Metal	0.01
69	1964, 1966, 1967	52	XRF	4/7/97	1	Classroom	1070	Wall	Middle Wall	Solid	Concrete	0.12
70	1964, 1966, 1967	53	XRF	4/7/97	1	Classroom	1070	Wall	Wall	Solid	Concrete	0
71	1964, 1966, 1967	54	XRF	4/7/97	1	Classroom	1070	Wall	Mural	Solid	Concrete	0
72	1964, 1966, 1967	55	XRF	4/7/97	1	Classroom	1080	Wall	Mural	Solid	Concrete	0.03
73	1964, 1966, 1967	56	XRF	4/7/97	1	Classroom	1080	Wall	Mural	Solid	Concrete	0.11
74	1964, 1966, 1967	57	XRF	4/7/97	1	Classroom	1080	Door	Door	Solid	Wood	0.02
75	1964, 1966, 1967	58	XRF	4/7/97	1	Classroom	1080	Door	Casing	Solid	Metal	0.03
76	1964, 1966, 1967	59	XRF	4/7/97	1	Classroom	1080	Door	Header	Solid	Metal	0
77	1964, 1966, 1967	60	XRF	4/7/97	1	Classroom	1080	Wall	Middle Wall	Solid	Concrete	0.1
78	1964, 1966, 1967	61	XRF	4/7/97	1	Classroom	1080	Wall	Wall	Solid	Concrete	0.01
79	1964, 1966, 1967	62	XRF	4/7/97	1	Classroom	1080	Wall	Wall	Solid	Concrete	0
80	1964, 1966, 1967	96	XRF	4/8/97	1	Classroom	1150	Wall	Mural	Solid	Concrete	0.04
81	1964, 1966, 1967	97	XRF	4/8/97	1	Classroom	1150	Wall	Middle Wall	Solid	Concrete	0.01
82	1964, 1966, 1967	98	XRF	4/8/97	1	Classroom	1150	Wall	Wall	Solid	Concrete	0.12
83	1964, 1966, 1967	99	XRF	4/8/97	1	Classroom	1150	Door	Casing	Solid	Metal	0.02
84	1964, 1966, 1967	100	XRF	4/8/97	1	Classroom	1150	Door	Header	Solid	Metal	0
85	1964, 1966, 1967	101	XRF	4/8/97	1	Classroom	1150	Door	Door	Solid	Metal	0
86	1964, 1966, 1967	81	XRF	4/8/97	1	Classroom	1170	Wall	Middle Wall	Solid	Concrete	0.05
87	1964, 1966, 1967	82	XRF	4/8/97	1	Classroom	1170	Wall	Wall	Solid	Concrete	0.02
88	1964, 1966, 1967	83	XRF	4/8/97	1	Classroom	1170	Wall	Mural	Solid	Concrete	0.01
89	1964, 1966, 1967	84	XRF	4/8/97	1	Classroom	1170	Wall	Wall	Solid	Concrete	0.14
90	1964, 1966, 1967	85	XRF	4/8/97	1	Classroom	1170	Door	Casing	Solid	Metal	0.03
91	1964, 1966, 1967	86	XRF	4/8/97	1	Classroom	1170	Door	Header	Solid	Metal	0
92	1964, 1966, 1967	66	XRF	4/8/97	1	Classroom	1190	Wall	Middle Wall	Solid	Concrete	0
93	1964, 1966, 1967	67	XRF	4/8/97	1	Classroom	1190	Wall	Wall	Solid	Concrete	0.04
94	1964, 1966, 1967	68	XRF	4/8/97	1	Classroom	1190	Door	Casing	Solid	Metal	0.03
95	1964, 1966, 1967	69	XRF	4/8/97	1	Classroom	1190	Door	Header	Solid	Metal	0
96	1964, 1966, 1967	60	XRF	4/8/97	1	Classroom	1200	Wall	Wall	Solid	Concrete	0
97	1964, 1966, 1967	61	XRF	4/8/97	1	Classroom	1200	Wall	Wall	Solid	Concrete	0.06
98	1964, 1966, 1967	62	XRF	4/8/97	1	Classroom	1200	Wall	Middle Wall	Solid	Wood	0.01
99	1964, 1966, 1967	63	XRF	4/8/97	1	Classroom	1200	Wall	Wall	Solid	Concrete	0
100	1964, 1966, 1967	64	XRF	4/8/97	1	Classroom	1200	Door	Casing	Solid	Metal	0.04
101	1964, 1966, 1967	65	XRF	4/8/97	1	Classroom	1200	Door	Header	Solid	Metal	0
102	1964, 1966, 1967	35	XRF	4/8/97	1	Classroom	1210	Wall	Middle Wall	Solid	Concrete	0.03
103	1964, 1966, 1967	36	XRF	4/8/97	1	Classroom	1210	Wall	Wall	Solid	Concrete	0.02
104	1964, 1966, 1967	37	XRF	4/8/97	1	Classroom	1210	Wall	Mural	Solid	Concrete	0.02
105	1964, 1966, 1967	38	XRF	4/8/97	1	Classroom	1210	Window	Stool	Solid	Wood	0
106	1964, 1966, 1967	39	XRF	4/8/97	1	Classroom	1210	Wall	Middle Wall	Solid	Drywall	0
107	1964, 1966, 1967	40	XRF	4/8/97	1	Classroom	1210	Wall	Wall	Solid	Concrete	0
108	1964, 1966, 1967	41	XRF	4/8/97	1	Classroom	1210	Door	Casing	Solid	Metal	0.05
109	1964, 1966, 1967	17	XRF	4/8/97	1	Classroom	1260	Wall	Middle Wall	Solid	Concrete	0.01
110	1964, 1966, 1967	18	XRF	4/8/97	1	Classroom	1260	Wall	Wall	Solid	Concrete	0.02
111	1964, 1966, 1967	19	XRF	4/8/97	1	Classroom	1260		Radiator	Solid	Metal	0.01
112	1964, 1966, 1967	20	XRF	4/8/97	1	Classroom	1260	Wall	Mural	Solid	Concrete	0.01
113	1964, 1966, 1967	21	XRF	4/8/97	1	Classroom	1260	Door	Casing	Solid	Metal	0.02
114	1964, 1966, 1967	22	XRF	4/8/97	1	Classroom	1260	Wall	Wall	Solid	Concrete	0
115	1964, 1966, 1967	23	XRF	4/8/97	1	Classroom	1270	Wall	Wall	Solid	Concrete	0.03
116	1964, 1966, 1967	24	XRF	4/8/97	1	Classroom	1270		Radiator	Solid	Metal	0.02
117	1964, 1966, 1967	25	XRF	4/8/97	1	Classroom	1270	Wall	Wall	Solid	Concrete	0.02
118	1964, 1966, 1967	26	XRF	4/8/97	1	Classroom	1270	Wall	Wall	Solid	Concrete	0
119	1964, 1966, 1967	27	XRF	4/8/97	1	Classroom	1270	Door	Casing	Solid	Metal	0.02



Saint Paul Public Schools  
 Frost Lake Magnet School of Technology  
 Lead-Based Paint Inspection

	A	B	C	D	E	F	G	H	I	J	K	L
3	Site	Sample#	Analysis	Date	Floor	Area	Room#	Structure	Feature	Condition	Substrate	Result
120	1964, 1966, 1967	28	XRF	4/8/97	1	Classroom	1270	Door	Header	Solid	Metal	0.01
121	1964, 1966, 1967	162	XRF	4/7/97	1	Classroom	1400	Wall	Midle Wall	Solid	Concrte	0
122	1964, 1966, 1967	163	XRF	4/7/97	1	Classroom	1400	Wall	Mural	Solid	Concrte	0.01
123	1964, 1966, 1967	164	XRF	4/7/97	1	Classroom	1400	Wall	Wall	Solid	Concrte	0.02
124	1964, 1966, 1967	165	XRF	4/7/97	1	Classroom	1400	Door	Casing	Solid	Metal	0.08
125	1964, 1966, 1967	166	XRF	4/7/97	1	Classroom	1400	Door	Header	Solid	Metal	0
126	1964, 1966, 1967	167	XRF	4/7/97	1	Classroom	1400	Wall	Wall	Solid	Concrte	0.03
127	1964, 1966, 1967	121	XRF	4/7/97	1	Classroom	1410	Wall	Midle Wall	Solid	Concrte	0
128	1964, 1966, 1967	122	XRF	4/7/97	1	Classroom	1410	Door	Casing	Solid	Metal	0
129	1964, 1966, 1967	123	XRF	4/7/97	1	Classroom	1410	Wall	Wall	Solid	Concrte	0.01
130	1964, 1966, 1967	124	XRF	4/7/97	1	Classroom	1410	Door	Header	Solid	Metal	0
131	1964, 1966, 1967	125	XRF	4/7/97	1	Classroom	1410	Wall	Wall	Solid	Concrte	0.07
132	1964, 1966, 1967	42	XRF	4/8/97	1	Classroom	1420	Wall	Midle Wall	Solid	Drywall	0
133	1964, 1966, 1967	43	XRF	4/8/97	1	Classroom	1420	Door	Casing	Solid	Metal	0.13
134	1964, 1966, 1967	44	XRF	4/8/97	1	Classroom	1420	Door	Header	Solid	Metal	0
135	1964, 1966, 1967	45	XRF	4/8/97	1	Classroom	1420	Wall	Wall	Solid	Concrte	0
136	1964, 1966, 1967	46	XRF	4/8/97	1	Classroom	1420	Wall	Wall	Solid	Concrte	0
137	1964, 1966, 1967	173	XRF	4/7/97	1	Classroom	1421	Door	Casing	Solid	Metal	0.03
138	1964, 1966, 1967	174	XRF	4/7/97	1	Classroom	1421	Door	Header	Solid	Metal	0.02
139	1964, 1966, 1967	175	XRF	4/7/97	1	Classroom	1421	Wall	Wall	Solid	Concrte	0.05
140	1964, 1966, 1967	176	XRF	4/7/97	1	Classroom	1421	Wall	Midle Wall	Solid	Concrte	0.09
141	1964, 1966, 1967	177	XRF	4/7/97	1	Classroom	1421	Wall	Midle Wall	Solid	Drywall	0
142	1964, 1966, 1967	114	XRF	4/7/97	1	Classroom	1440	Wall	Wall	Solid	Drywall	0.05
143	1964, 1966, 1967	115	XRF	4/7/97	1	Classroom	1440	Wall	Midle Wall	Solid	Concrte	0
144	1964, 1966, 1967	116	XRF	4/7/97	1	Classroom	1440	Wall	Mural	Solid	Concrte	0
145	1964, 1966, 1967	117	XRF	4/7/97	1	Classroom	1440	Wall	Wall	Solid	Concrte	0.04
146	1964, 1966, 1967	178	XRF	4/7/97	1	Classroom	1461	Door	Casing	Solid	Metal	0.04
147	1964, 1966, 1967	179	XRF	4/7/97	1	Classroom	1461	Door	Header	Solid	Metal	0
148	1964, 1966, 1967	180	XRF	4/7/97	1	Classroom	1461	Wall	Midle Wall	Solid	Concrte	0.06
149	1964, 1966, 1967	181	XRF	4/7/97	1	Classroom	1461	Wall	Wall	Solid	Drywall	0.03
150	1964, 1966, 1967	182	XRF	4/7/97	1	Classroom	1461	Wall	Wall	Solid		0
151	1964, 1966, 1967	87	XRF	4/8/97	1	Classroom	11160	Wall	Midle Wall	Solid	Concrte	0.02
152	1964, 1966, 1967	88	XRF	4/8/97	1	Classroom	11160	Wall	Mural	Solid	Concrte	0.01
153	1964, 1966, 1967	89	XRF	4/8/97	1	Classroom	11160	Wall	Wall	Solid	Concrte	0
154	1964, 1966, 1967	90	XRF	4/8/97	1	Classroom	11160	Wall	Wall	Solid	Concrte	0.19
155	1964, 1966, 1967	91	XRF	4/8/97	1	Classroom	11160	Door	Casing	Solid	Metal	0.03
156	1964, 1966, 1967	92	XRF	4/8/97	1	Classroom	11160	Door	Header	Solid	Metal	0
157	1964, 1966, 1967	75	XRF	4/8/97	1	Classroom	11180	Wall	Midle Wall	Solid	Concrte	0
158	1964, 1966, 1967	76	XRF	4/8/97	1	Classroom	11180	Wall	Mural	Solid	Concrte	0.03
159	1964, 1966, 1967	77	XRF	4/8/97	1	Classroom	11180	Wall	Wall	Solid	Concrte	0.02
160	1964, 1966, 1967	78	XRF	4/8/97	1	Classroom	11180	Wall	Wall	Solid	Concrte	0.16
161	1964, 1966, 1967	79	XRF	4/8/97	1	Classroom	11180	Door	Casing	Solid	Metal	0.03
162	1964, 1966, 1967	80	XRF	4/8/97	1	Classroom	11180	Door	Header	Solid	Metal	0
163	1964, 1966, 1967	6	XRF	4/10/97	1	Gym	1	Column		Solid	Metal	0.47
164	1964, 1966, 1967	7	XRF	4/10/97	1	Gym	1	Wall	Wall	Solid	Concrte	0
165	1964, 1966, 1967	8	XRF	4/10/97	1	Gym	1	Wall	Midle Wall	Solid	Concrte	0
166	1964, 1966, 1967	9	XRF	4/10/97	1	Gym	1	Wall	Mural	Solid	Concrte	0.01
167	1964, 1966, 1967	10	XRF	4/10/97	1	Gym	1	Wall	Mural	Solid	Concrte	0.03
168	1964, 1966, 1967	11	XRF	4/10/97	1	Gym	1	Wall	Murai	Solid	Concrte	0
169	1964, 1966, 1967	12	XRF	4/10/97	1	Gym	1	Wall	Mural	Solid	Concrte	0
170	1964, 1966, 1967	13	XRF	4/10/97	1	Gym	1	Wall	Mural	Solid	Concrte	0
171	1964, 1966, 1967	14	XRF	4/10/97	1	Gym	1	Wall	Mural	Solid	Concrte	0.01
172	1964, 1966, 1967	15	XRF	4/10/97	1	Gym	1	Wall	Mural	Solid	Concrte	0
173	1964, 1966, 1967	16	XRF	4/10/97	1	Gym	1	Wall	Mural	Solid	Concrte	0.01
174	1964, 1966, 1967	17	XRF	4/10/97	1	Gym	1	Door	Door	Solid	Metal	0.07
175	1964, 1966, 1967	18	XRF	4/10/97	1	Gym	1	Door	Casing	Solid	Metal	0.06
176	1964, 1966, 1967	19	XRF	4/10/97	1	Gym	1	Fire Alarm	Cabinet	Solid	Metal	0.07
177	1964, 1966, 1967	20	XRF	4/10/97	1	Gym	1	Closet	Casing	Solid	Metal	0.04
178	1964, 1966, 1967	21	XRF	4/10/97	1	Gym	1	Stairs	Hand rail	Solid	Metal	0.04

Saint Paul Public Schools  
 Frost Lake Magnet School of Technology  
 Lead-Based Paint Inspection

3	A	B	C	D	E	F	G	H	I	J	K	L
Site	Sample#	Analysis	Date	Floor	Area	Room#	Structure	Feature	Condition	Substrate	Result	
179	1964, 1966, 1967	22	XRF	4/10/97	1	Gym	1	Wall	Wall Rgstr	Solid	Metal	0
180	1964, 1966, 1967	23	XRF	4/10/97	1	Gym	1	Wall	Wall Rgstr	Solid	Metal	0
181	1964, 1966, 1967	24	XRF	4/10/97	1	Gym	1	Window	Guard	Solid	Metal	0
182	1964, 1966, 1967	25	XRF	4/10/97	1	Gym	1	Floor		Solid	Tile	0.02
183	1964, 1966, 1967	26	XRF	4/10/97	1	Gym	1	Floor		Solid	Tile	1.22
184	1964, 1966, 1967	126	XRF	4/7/97	1	Hall	1	Door	Door	Solid	Metal	0
185	1964, 1966, 1967	127	XRF	4/7/97	1	Hall	1	Ceiling		Solid	Drywall	0
186	1964, 1966, 1967	128	XRF	4/7/97	1	Hall	1	Wall	Wall	Solid	Concrte	0.02
187	1964, 1966, 1967	129	XRF	4/7/97	1	Hall	1	Window	Casing	Solid	Metal	0.01
188	1964, 1966, 1967	130	XRF	4/7/97	1	Hall	1	Wall	Midle Wall	Solid	Concrte	0.01
189	1964, 1966, 1967	131	XRF	4/7/97	1	Hall	1	Bookcase	Inside	Cracked	Wood	0
190	1964, 1966, 1967	132	XRF	4/7/97	1	Hall	1	Wall	Wall	Solid	Drywall	0.01
191	1964, 1966, 1967	133	XRF	4/7/97	1	Hall	1	Wall	Midle Wall	Solid	Concrte	0
192	1964, 1966, 1967	134	XRF	4/7/97	1	Hall	1	Door	Door	Solid	Metal	0
193	1964, 1966, 1967	135	XRF	4/7/97	1	Hall	1	Wall	Midle Wall	Solid	Concrte	0.09
194	1964, 1966, 1967	136	XRF	4/7/97	1	Hall	1	Door	Door	Solid	Metal	0.03
195	1964, 1966, 1967	137	XRF	4/7/97	1	Hall	1	Wall	Mural	Solid	Concrte	0
196	1964, 1966, 1967	138	XRF	4/7/97	1	Hall	1	Wall	Mural	Solid	Concrte	0
197	1964, 1966, 1967	139	XRF	4/7/97	1	Hall	1	Window	Sill	Solid	Metal	0.01
198	1964, 1966, 1967	168	XRF	4/7/97	1	Hall	2	Wall	Midle Wall	Solid	Concrte	0
199	1964, 1966, 1967	169	XRF	4/7/97	1	Hall	2	Bookcase	Sheif	Peeling	Wood	0
200	1964, 1966, 1967	170	XRF	4/7/97	1	Hall	2	Door	Casing	Solid	Metal	0.02
201	1964, 1966, 1967	171	XRF	4/7/97	1	Hall	2	Wall	Mural	Solid	Concrte	0.01
202	1964, 1966, 1967	172	XRF	4/7/97	1	Hall	2	Coat Rack		Solid	Wood	0
203	1964, 1966, 1967	13	XRF	4/8/97	1	Hall	3	Wall	Midle Wall	Solid	Concrte	0
204	1964, 1966, 1967	14	XRF	4/8/97	1	Hall	3		Radiator	Solid	Metal	0.02
205	1964, 1966, 1967	15	XRF	4/8/97	1	Hall	3	Door	Door	Solid	Metal	0.05
206	1964, 1966, 1967	16	XRF	4/8/97	1	Hall	3	Door	Casing	Solid	Metal	0.03
207	1964, 1966, 1967	134	XRF	4/8/97	1	Hall	4	Wall	Midle Wall	Solid	Concrte	0
208	1964, 1966, 1967	135	XRF	4/8/97	1	Hall	4	Wall	Wall	Solid	Drywall	0
209	1964, 1966, 1967	136	XRF	4/8/97	1	Hall	4	Door	Casing	Solid	Metal	0.02
210	1964, 1966, 1967	137	XRF	4/8/97	1	Hall	4	Door	Casing	Solid	Metal	0.01
211	1964, 1966, 1967	138	XRF	4/8/97	1	Hall	4	Wall	Wall	Solid	Concrte	0
212	1964, 1966, 1967	139	XRF	4/8/97	1	Hall	4	Bookcase	Inside	Peeling	Wood	0.03
213	1964, 1966, 1967	140	XRF	4/8/97	1	Hall	4	Wall	Midle Wall	Solid	Concrte	0
214	1964, 1966, 1967	141	XRF	4/8/97	1	Hall	4	Wall	Mural	Solid	Concrte	0
215	1964, 1966, 1967	142	XRF	4/8/97	1	Hall	4	Wall	Mural	Solid	Concrte	0
216	1964, 1966, 1967	143	XRF	4/8/97	1	Hall	4	Window	Casing	Solid	Metal	0.04
217	1964, 1966, 1967	177	XRF	4/8/97	1	Hall	5	Wall	Wall	Solid	Drywall	0.08
218	1964, 1966, 1967	178	XRF	4/8/97	1	Hall	5	Wall	Midle Wall	Solid	Concrte	0
219	1964, 1966, 1967	179	XRF	4/8/97	1	Hall	5	Door	Casing	Solid	Metal	0.06
220	1964, 1966, 1967	180	XRF	4/8/97	1	Hall	5	Wall	Panel	Solid	Metal	0
221	1964, 1966, 1967	118	XRF	4/7/97	1	Library	1	Wall	Wall	Solid	Drywall	0.07
222	1964, 1966, 1967	119	XRF	4/7/97	1	Library	1	Window	Casing	Solid	Metal	0.01
223	1964, 1966, 1967	120	XRF	4/7/97	1	Library	1	Partition		Solid	Wood	0
224	1964, 1966, 1967	169	XRF	4/8/97	1	Lounge	1	Wall	Midle Wall	Solid	Concrte	0
225	1964, 1966, 1967	170	XRF	4/8/97	1	Lounge	1	Door	Casing	Solid	Metal	0.01
226	1964, 1966, 1967	171	XRF	4/8/97	1	Lounge	2	Ceiling		Solid	Metal	0.05
227	1964, 1966, 1967	172	XRF	4/8/97	1	Lounge	2	Wall	Wall	Solid	Concrte	0.03
228	1964, 1966, 1967	173	XRF	4/8/97	1	Lounge	2	Door	Casing	Solid	Metal	0.04
229	1964, 1966, 1967	174	XRF	4/8/97	1	Lounge	3	Ceiling		Solid	Metal	0.05
230	1964, 1966, 1967	175	XRF	4/8/97	1	Lounge	3	Wall	Midle Wall	Solid	Concrte	0
231	1964, 1966, 1967	176	XRF	4/8/97	1	Lounge	3	Door	Casing	Solid	Metal	0.01
232	1964, 1966, 1967	63	XRF	4/7/97	1	Other	1110	Wall	Midle Wall	Solid	Concrte	0
233	1964, 1966, 1967	64	XRF	4/7/97	1	Other	1110	Door	Casing	Solid	Metal	0.07
234	1964, 1966, 1967	107	XRF	4/7/97	1	Other	1550	Ceiling		Solid	Drywall	0.08
235	1964, 1966, 1967	108	XRF	4/7/97	1	Other	1550	Wall	Wall	Solid	Concrte	0
236	1964, 1966, 1967	109	XRF	4/7/97	1	Other	1550	Door	Casing	Solid	Metal	0.05
237	1964, 1966, 1967	110	XRF	4/7/97	1	Other	1550		Radiator	Solid	Metal	0.03

Saint Paul Public Schools  
 Frost Lake Magnet School of Technology  
 Lead-Based Paint Inspection

3	A	B	C	D	E	F	G	H	I	J	K	L
Site	Sample#	Analysis	Date	Floor	Area	Room#	Structure	Feature	Condition	Substrate	Result	
238	1964, 1966, 1967	102	XRF	4/7/97	1	Other	1560	Wall	Midle Wall	Solid	Concrte	0
239	1964, 1966, 1967	103	XRF	4/7/97	1	Other	1560	Door	Casing	Solid	Metal	0.05
240	1964, 1966, 1967	104	XRF	4/7/97	1	Other	1560	Beam	Midle Wall	Solid	Metal	0.41
241	1964, 1966, 1967	105	XRF	4/7/97	1	Other	1560		Radiator	Solid	Metal	0.04
242	1964, 1966, 1967	106	XRF	4/7/97	1	Other	1560	Ceiling		Solid	Drywall	0.22
243	1964, 1966, 1967	96	XRF	4/7/97	1	Other	1650	Wall	Midle Wall	Solid	Concrte	0
244	1964, 1966, 1967	97	XRF	4/7/97	1	Other	1650	Door	Casing	Solid	Metal	0.06
245	1964, 1966, 1967	98	XRF	4/7/97	1	Other	1650	Ceiling		Solid	Drywall	0.05
246	1964, 1966, 1967	6	XRF	4/13/97	2	Outside	1	Stairs	Hand rail	Solid	Metal	0.02
247	1964, 1966, 1967	7	XRF	4/13/97	2	Outside	1	Door	Door	Solid	Metal	0.04
248	1964, 1966, 1967	8	XRF	4/13/97	2	Outside	1	Door	Casing	Solid	Metal	0
249	1964, 1966, 1967	9	XRF	4/13/97	2	Outside	1	Stairs	Hand rail	Solid	Metal	0
250	1964, 1966, 1967	10	XRF	4/13/97	2	Outside	1	Garage	Soffit	Peeling	Wood	0
251	1964, 1966, 1967	11	XRF	4/13/97	2	Outside	1	Stairs	Hand rail	Solid	Metal	0.02
252	1964, 1966, 1967	12	XRF	4/13/97	2	Outside	2	Floor		Chalking	Concrte	0.47
253	1964, 1966, 1967	13	XRF	4/13/97	2	Outside	2	Car Barrier		Solid	Metal	0.02
254	1964, 1966, 1967	14	XRF	4/13/97	2	Outside	2	Floor		Solid	Concrte	0.05
255	1964, 1966, 1967	15	XRF	4/13/97	2	Outside	3	Light Pole		Solid	Metal	0.01
256	1964, 1966, 1967	16	XRF	4/13/97	2	Outside	3	Light Pole	Baseboar	Solid	Metal	0.01
257	1964, 1966, 1967	85	XRF	4/7/97	1	Restroom	1	Ceiling		Solid	Plaster	0.17
258	1964, 1966, 1967	86	XRF	4/7/97	1	Restroom	1	Wall	Midle Wall	Solid	Concrte	0.06
259	1964, 1966, 1967	87	XRF	4/7/97	1	Restroom	1	Door	Casing	Solid	Metal	0.07
260	1964, 1966, 1967	65	XRF	4/7/97	1	Restroom	1100		Radiator	Solid	Metal	0.02
261	1964, 1966, 1967	66	XRF	4/7/97	1	Restroom	1100	Door	Casing	Solid	Metal	0.06
262	1964, 1966, 1967	67	XRF	4/7/97	1	Restroom	1100	Ceiling		Solid	Plaster	0.17
263	1964, 1966, 1967	102	XRF	4/8/97	1	Restroom	1130	Ceiling		Solid	Metal	0.07
264	1964, 1966, 1967	103	XRF	4/8/97	1	Restroom	1130	Door	Casing	Solid	Metal	0.05
265	1964, 1966, 1967	155	XRF	4/7/97	1	Restroom	1300	Ceiling		Solid	Drywall	0.03
266	1964, 1966, 1967	156	XRF	4/7/97	1	Restroom	1300	Door	Casing	Solid	Metal	0.02
267	1964, 1966, 1967	157	XRF	4/7/97	1	Restroom	1300		Radiator	Solid	Metal	0.05
268	1964, 1966, 1967	158	XRF	4/7/97	1	Restroom	1300	Wall	Stall Door	Solid	Metal	0.01
269	1964, 1966, 1967	151	XRF	4/7/97	1	Restroom	1310	Ceiling		Solid	Drywall	0.08
270	1964, 1966, 1967	152	XRF	4/7/97	1	Restroom	1310	Door	Casing	Solid	Metal	0.02
271	1964, 1966, 1967	153	XRF	4/7/97	1	Restroom	1310		Radiator	Solid	Metal	0.03
272	1964, 1966, 1967	154	XRF	4/7/97	1	Restroom	1310	Door	Stall Door	Solid	Metal	0.01
273	1964, 1966, 1967	147	XRF	4/7/97	1	Restroom	1320	Ceiling		Solid	Drywall	0.09
274	1964, 1966, 1967	148	XRF	4/7/97	1	Restroom	1320	Door	Casing	Solid	Metal	0.04
275	1964, 1966, 1967	149	XRF	4/7/97	1	Restroom	1320	Door	Stall Door	Solid	Metal	0
276	1964, 1966, 1967	150	XRF	4/7/97	1	Restroom	1320		Radiator	Solid	Metal	0.04
277	1964, 1966, 1967	143	XRF	4/7/97	1	Restroom	1330	Ceiling		Solid	Drywall	0.05
278	1964, 1966, 1967	144	XRF	4/7/97	1	Restroom	1330	Door	Stall Door	Solid	Metal	0.01
279	1964, 1966, 1967	145	XRF	4/7/97	1	Restroom	1330		Radiator	Solid	Metal	0.02
280	1964, 1966, 1967	146	XRF	4/7/97	1	Restroom	1330	Door	Casing	Solid	Metal	0.02
281	1964, 1966, 1967	47	XRF	4/8/97	1	Restroom	1480	Wall	Wall	Solid	Concrte	0.07
282	1964, 1966, 1967	48	XRF	4/8/97	1	Restroom	1480	Ceiling		Cracked	Metal	0.23
283	1964, 1966, 1967	49	XRF	4/8/97	1	Restroom	1480		Radiator	Solid	Metal	0.03
284	1964, 1966, 1967	50	XRF	4/8/97	1	Restroom	1480	Door	Casing	Solid	Metal	0.07
285	1964, 1966, 1967	51	XRF	4/8/97	1	Restroom	1480	Door	Stall Door	Solid	Metal	0
286	1964, 1966, 1967	52	XRF	4/8/97	1	Restroom	1480	Door	Stall Door	Solid	Metal	0
287	1964, 1966, 1967	53	XRF	4/8/97	1	Restroom	1490	Ceiling		Solid	Metal	0.2
288	1964, 1966, 1967	54	XRF	4/8/97	1	Restroom	1490	Wall	Wall	Solid	Concrte	0
289	1964, 1966, 1967	55	XRF	4/8/97	1	Restroom	1490		Radiator	Solid	Metal	0.03
290	1964, 1966, 1967	56	XRF	4/8/97	1	Restroom	1490	Wall	Stall Door	Solid	Metal	0
291	1964, 1966, 1967	57	XRF	4/8/97	1	Restroom	1490	Door	Casing	Solid	Metal	0.08
292	1964, 1966, 1967	111	XRF	4/7/97	1	Restroom	1540	Ceiling		Solid	Drywall	0.06
293	1964, 1966, 1967	112	XRF	4/7/97	1	Restroom	1540	Door	Stall Door	Solid	Metal	0
294	1964, 1966, 1967	113	XRF	4/7/97	1	Restroom	1540	Door	Casing	Solid	Metal	0.08
295	1964, 1966, 1967	99	XRF	4/7/97	1	Restroom	1570		Bthrm Stil	Solid	Metal	0
296	1964, 1966, 1967	100	XRF	4/7/97	1	Restroom	1570	Door	Casing	Solid	Metal	0.06

Saint Paul Public Schools  
 Frost Lake Magnet School of Technology  
 Lead-Based Paint Inspection

3	A	B	C	D	E	F	G	H	I	J	K	L
Site	Sample#	Analysis	Date	Floor	Area	Room#	Structure	Feature	Condition	Substrate	Result	
297	1964, 1966, 1967	101	XRF	4/7/97	1	Restroom	1570	Ceiling		Solid	Drywall	0.14
298	1964, 1966, 1967	144	XRF	4/8/97	1	Restroom	1730	Ceiling		Solid	Metal	0.05
299	1964, 1966, 1967	145	XRF	4/8/97	1	Restroom	1730	Door	Casing	Solid	Metal	0.04
300	1964, 1966, 1967	151	XRF	4/8/97	1	Restroom	1740	Ceiling		Solid	Metal	0.06
301	1964, 1966, 1967	152	XRF	4/8/97	1	Restroom	1740	Door	Casing	Solid	Metal	0.02
302	1964, 1966, 1967	6	XRF	4/7/97	1	Room	1000	Wall	Wall	Solid	Concrte	0.01
303	1964, 1966, 1967	7	XRF	4/7/97	1	Room	1000	Wall	Wall	Solid	Concrte	0.02
304	1964, 1966, 1967	8	XRF	4/7/97	1	Room	1000	Door	Casing	Solid	Metal	0.02
305	1964, 1966, 1967	9	XRF	4/7/97	1	Room	1000		Radiator	Cracked	Metal	0.03
306	1964, 1966, 1967	10	XRF	4/7/97	1	Room	1000	Wall	Mural	Solid	Concrte	0.02
307	1964, 1966, 1967	11	XRF	4/7/97	1	Room	1000	Wall	Mural	Solid	Concrte	0.01
308	1964, 1966, 1967	12	XRF	4/7/97	1	Room	1010	Wall	Wall	Solid	Concrte	0.03
309	1964, 1966, 1967	13	XRF	4/7/97	1	Room	1010	Wall	Wall	Solid	Concrte	0.14
310	1964, 1966, 1967	14	XRF	4/7/97	1	Room	1010	Door	Casing	Solid	Metal	0.01
311	1964, 1966, 1967	15	XRF	4/7/97	1	Room	1010		Radiator	Solid	Metal	0.03
312	1964, 1966, 1967	16	XRF	4/7/97	1	Room	1015	Wall	Midle Wall	Solid	Concrte	0
313	1964, 1966, 1967	17	XRF	4/7/97	1	Room	1015		Radiator	Solid	Metal	0
314	1964, 1966, 1967	18	XRF	4/7/97	1	Room	1015	Door	Casing	Solid	Metal	0.19
315	1964, 1966, 1967	19	XRF	4/7/97	1	Room	1016	Wall	Midle Wall	Solid	Concrte	0.05
316	1964, 1966, 1967	20	XRF	4/7/97	1	Room	1016	Door	Casing	Solid	Metal	0.05
317	1964, 1966, 1967	21	XRF	4/7/97	1	Room	1016	Ceiling		Solid	Drywall	0
318	1964, 1966, 1967	68	XRF	4/7/97	1	Room	1090	Wall	Midle Wall	Solid	Concrte	0
319	1964, 1966, 1967	69	XRF	4/7/97	1	Room	1090	Door	Door	Solid	Metal	0
320	1964, 1966, 1967	70	XRF	4/7/97	1	Room	1090	Door	Door	Solid	Wood	0.06
321	1964, 1966, 1967	71	XRF	4/7/97	1	Room	1090	Door	Casing	Solid	Metal	0
322	1964, 1966, 1967	104	XRF	4/8/97	1	Room	1120	Wall	Midle Wall	Solid	Concrte	0
323	1964, 1966, 1967	105	XRF	4/8/97	1	Room	1120	Door	Casing	Solid	Metal	0.06
324	1964, 1966, 1967	106	XRF	4/8/97	1	Room	1120	Bookcase	Inside	Solid	Wood	0.02
325	1964, 1966, 1967	33	XRF	4/8/97	1	Room	1240	Door	Door	Solid	Metal	0.04
326	1964, 1966, 1967	34	XRF	4/8/97	1	Room	1240	Door	Casing	Solid	Metal	0.04
327	1964, 1966, 1967	29	XRF	4/8/97	1	Room	1242	Wall	Midle Wall	Solid	Drywall	0
328	1964, 1966, 1967	30	XRF	4/8/97	1	Room	1242	Stairs	Tread	Solid	Metal	0
329	1964, 1966, 1967	31	XRF	4/8/97	1	Room	1242	Door	Door	Solid	Metal	0.02
330	1964, 1966, 1967	32	XRF	4/8/97	1	Room	1242	Door	Casing	Solid	Metal	0.02
331	1964, 1966, 1967	159	XRF	4/7/97	1	Room	1290	Door	Casing	Solid	Metal	0.01
332	1964, 1966, 1967	160	XRF	4/7/97	1	Room	1290	Wall	Midle Wall	Solid	Concrte	0.02
333	1964, 1966, 1967	161	XRF	4/7/97	1	Room	1290	Wall	Midle Wall	Solid	Concrte	0.01
334	1964, 1966, 1967	140	XRF	4/7/97	1	Room	1340	Door	Casing	Solid	Metal	0.01
335	1964, 1966, 1967	141	XRF	4/7/97	1	Room	1340	Wall	Midle Wall	Solid	Concrte	0.02
336	1964, 1966, 1967	142	XRF	4/7/97	1	Room	1340		Radiator	Solid	Metal	0.02
337	1964, 1966, 1967	166	XRF	4/8/97	1	Room	1382	Ceiling		Solid	Metal	0.04
338	1964, 1966, 1967	167	XRF	4/8/97	1	Room	1382	Door	Casing	Solid	Metal	0.03
339	1964, 1966, 1967	168	XRF	4/8/97	1	Room	1382	Wall	Midle Wall	Solid	Drywall	0
340	1964, 1966, 1967	88	XRF	4/7/97	1	Room	1383	Wall	Midle Wall	Solid	Concrte	0
341	1964, 1966, 1967	89	XRF	4/7/97	1	Room	1383	Wall	Midle Wall	Solid	Drywall	0
342	1964, 1966, 1967	90	XRF	4/7/97	1	Room	1383	Door	Casing	Solid	Metal	0.26
343	1964, 1966, 1967	91	XRF	4/7/97	1	Room	1383	Ceiling		Solid	Drywall	0
344	1964, 1966, 1967	107	XRF	4/8/97	1	Room	1387	Wall	Midle Wall	Solid	Drywall	0.01
345	1964, 1966, 1967	108	XRF	4/8/97	1	Room	1387	Door	Casing	Solid	Metal	0.12
346	1964, 1966, 1967	6	XRF	4/8/97	1	Room	1450	Door	Door	Solid	Metal	0.05
347	1964, 1966, 1967	7	XRF	4/8/97	1	Room	1450	Door	Casing	Solid	Metal	0.05
348	1964, 1966, 1967	8	XRF	4/8/97	1	Room	1450	Stairs	Hand rail	Solid	Metal	0.05
349	1964, 1966, 1967	9	XRF	4/8/97	1	Room	1450	Stairs	Baseboar	Solid	Metal	0.04
350	1964, 1966, 1967	10	XRF	4/8/97	1	Room	1450	Door	Door	Solid	Metal	0.03
351	1964, 1966, 1967	11	XRF	4/8/97	1	Room	1450	Floor		Solid	Concrte	0
352	1964, 1966, 1967	12	XRF	4/8/97	1	Room	1450		Locker	Solid	Metal	0.18
353	1964, 1966, 1967	58	XRF	4/8/97	1	Room	1500	Beam	Midle Wall	Solid	Metal	0.53
354	1964, 1966, 1967	59	XRF	4/8/97	1	Room	1500	Door	Casing	Solid	Metal	0.05
355	1964, 1966, 1967	70	XRF	4/8/97	1	Room	1600	Ceiling		Solid	Drywall	0.24

Saint Paul Public Schools  
 Frost Lake Magnet School of Technology  
 Lead-Based Paint Inspection

	A	B	C	D	E	F	G	H	I	J	K	L
3	Site	Sample#	Analysis	Date	Floor	Area	Room#	Structure	Feature	Condition	Substrate	Result
356	1964, 1966, 1967	71	XRF	4/8/97	1	Room	1600	Beam	Midle Wall	Solid	Metal	0.35
357	1964, 1966, 1967	72	XRF	4/8/97	1	Room	1600	Wall	Midle Wall	Solid	Concrte	0.01
358	1964, 1966, 1967	73	XRF	4/8/97	1	Room	1600	Door	Casing	Solid	Metal	0.03
359	1964, 1966, 1967	74	XRF	4/8/97	1	Room	1600	Door	Header	Solid	Metal	0.01
360	1964, 1966, 1967	181	XRF	4/8/97	1	Room	1660	Ceiling		Solid	Metal	0.08
361	1964, 1966, 1967	182	XRF	4/8/97	1	Room	1660	Wall	Midle Wall	Solid	Concrte	0
362	1964, 1966, 1967	183	XRF	4/8/97	1	Room	1660	Door	Casing	Solid	Metal	0.07
363	1964, 1966, 1967	184	XRF	4/8/97	1	Room	1660	Column		Solid	Metal	0.84
364	1964, 1966, 1967	27	XRF	4/10/97	1	Room	1690	Electrical	Support	Solid	Wood	0
365	1964, 1966, 1967	28	XRF	4/10/97	1	Room	1690	Bookcase	Shelf	Solid	Wood	0.07
366	1964, 1966, 1967	146	XRF	4/8/97	1	Room	1700	Door	Casing	Solid	Metal	0.05
367	1964, 1966, 1967	147	XRF	4/8/97	1	Room	1700	Wall	Midle Wall	Solid	Drywall	0
368	1964, 1966, 1967	148	XRF	4/8/97	1	Room	1700	Window	Casing	Solid	Metal	0.01
369	1964, 1966, 1967	131	XRF	4/8/97	1	Room	1710	Ceiling		Solid	Metal	0.06
370	1964, 1966, 1967	132	XRF	4/8/97	1	Room	1710	Wall	Midle Wall	Solid	Concrte	0.01
371	1964, 1966, 1967	133	XRF	4/8/97	1	Room	1710	Door	Casing	Solid	Metal	0.06
372	1964, 1966, 1967	149	XRF	4/8/97	1	Room	1720	Wall	Midle Wall	Solid	Drywall	0.01
373	1964, 1966, 1967	150	XRF	4/8/97	1	Room	1720	Window	Casing	Solid	Metal	0.02
374	1964, 1966, 1967	153	XRF	4/8/97	1	Room	1750	Wall	Midle Wall	Solid	Concrte	0.04
375	1964, 1966, 1967	154	XRF	4/8/97	1	Room	1750	Window	Casing	Solid	Metal	0.03
376	1964, 1966, 1967	155	XRF	4/8/97	1	Room	1750		Radiator	Solid	Metal	0.04
377	1964, 1966, 1967	156	XRF	4/8/97	1	Room	1760	Door	Casing	Solid	Metal	0.05
378	1964, 1966, 1967	157	XRF	4/8/97	1	Room	1760	Mini-blinds		Solid	Metal	0.02
379	1964, 1966, 1967	158	XRF	4/8/97	1	Room	1760	Wall	Midle Wall	Solid	Concrte	0
380	1964, 1966, 1967	159	XRF	4/8/97	1	Room	1760		Elec Pane	Solid	Metal	0
381	1964, 1966, 1967	160	XRF	4/8/97	1	Room	1770	Door	Casing	Solid	Metal	0.04
382	1964, 1966, 1967	161	XRF	4/8/97	1	Room	1770	Wall	Panel	Solid	Metal	0
383	1964, 1966, 1967	162	XRF	4/8/97	1	Room	1770	Wall	Midle Wall	Solid	Concrte	0.01
384	1964, 1966, 1967	163	XRF	4/8/97	1	Room	1770	Wall	Wall	Solid	Concrte	0.02
385	1964, 1966, 1967	164	XRF	4/8/97	1	Room	1770		Radiator	Solid	Metal	0.03
386	1964, 1966, 1967	165	XRF	4/8/97	1	Room	1770	Wall	Wall	Solid	Plaster	0.06
387	1964, 1966, 1967	92	XRF	4/7/97	1	Room	1800	Wall	Midle Wall	Solid	Concrte	0
388	1964, 1966, 1967	93	XRF	4/7/97	1	Room	1800	Wall	Wall	Solid	Concrte	0
389	1964, 1966, 1967	94	XRF	4/7/97	1	Room	1800	Door	Casing	Solid	Metal	0.03
390	1964, 1966, 1967	95	XRF	4/7/97	1	Room	1800	Window	Casing	Solid	Metal	0.05
391	1973 Bldg.	52	XRF	4/10/97	1	Arcade	1	Wall	Midle Wall	Solid	Concrte	0.13
392	1973 Bldg.	53	XRF	4/10/97	1	Arcade	1	Bench		Solid	Wood	0
393	1973 Bldg.	54	XRF	4/10/97	1	Arcade	1	Window	Panel	Cracked	Wood	0
394	1973 Bldg.	55	XRF	4/10/97	1	Arcade	1	Window	Stops	Solid	Wood	0
395	1973 Bldg.	56	XRF	4/10/97	1	Arcade	1	Window	Casing	Solid	Wood	0.01
396	1973 Bldg.	57	XRF	4/10/97	1	Arcade	1	Window	Header	Solid	Wood	0
397	1973 Bldg.	58	XRF	4/10/97	1	Arcade	1	Window	Stool	Solid	Wood	0
398	1973 Bldg.	59	XRF	4/10/97	1	Arcade	1	Door	Door	Solid	Wood	0
399	1973 Bldg.	60	XRF	4/10/97	1	Arcade	1	Window	Casing	Solid	Wood	0
400	1973 Bldg.	61	XRF	4/10/97	1	Arcade	1	Door	Casing	Solid	Metal	0
401	1973 Bldg.	64	XRF	4/10/97	1	Arcade	2	Door	Casing	Solid	Metal	0.01
402	1973 Bldg.	65	XRF	4/10/97	1	Arcade	2	Door	Casing	Solid	Metal	0
403	1973 Bldg.	76	XRF	4/10/97	1	Arcade	3	Wall	Midle Wall	Solid	Concrte	0.03
404	1973 Bldg.	77	XRF	4/10/97	1	Arcade	3	Door	Casing	Solid	Metal	0
405	1973 Bldg.	78	XRF	4/10/97	1	Arcade	3	Door	Jamb	Solid	Wood	0
406	1973 Bldg.	79	XRF	4/10/97	1	Arcade	3	Window	Panel	Solid	Wood	0
407	1973 Bldg.	80	XRF	4/10/97	1	Arcade	3	Hand Rail		Solid	Metal	0
408	1973 Bldg.	66	XRF	4/10/97	1	Garage	1	Wall	Midle Wall	Peeling	Concrte	0
409	1973 Bldg.	67	XRF	4/10/97	1	Garage	1	Wall	Midle Wall	Peeling	Concrte	0.12
410	1973 Bldg.	68	XRF	4/10/97	1	Garage	1	Door	Casing	Solid	Metal	0
411	1973 Bldg.	69	XRF	4/10/97	1	Garage	1	Wall	Midle Wall	Solid	Concrte	0.08
412	1973 Bldg.	70	XRF	4/10/97	1	Garage	1	Wall	Midle Wall	Solid	Concrte	0.05
413	1973 Bldg.	71	XRF	4/10/97	1	Garage	1	Floor		Solid	Concrte	0.01
414	1973 Bldg.	72	XRF	4/10/97	1	Garage	1	Door	Casing	Solid	Metal	0

Saint Paul Public Schools  
 Frost Lake Magnet School of Technology  
 Lead-Based Paint Inspection

	A	B	C	D	E	F	G	H	I	J	K	L
3	Site	Sample#	Analysis	Date	Floor	Area	Room#	Structure	Feature	Condition	Substrate	Result
415	1973 Bldg.	73	XRF	4/10/97	1	Garage	1	Wire Tray		Solid	Wood	0.43
416	1973 Bldg.	94	XRF	4/10/97	1	Gym	2	Floor		Solid	Tile	0
417	1973 Bldg.	95	XRF	4/10/97	1	Gym	2	Wall	Baseboar	Cracked	Concrte	0.03
418	1973 Bldg.	96	XRF	4/10/97	1	Gym	2	Wall	Wall	Cracked	Concrte	0.24
419	1973 Bldg.	97	XRF	4/10/97	1	Gym	2	Wall	Wall	Cracked	Concrte	0.01
420	1973 Bldg.	98	XRF	4/10/97	1	Gym	2	Wall	Midle Wall	Cracked	Concrte	0.15
421	1973 Bldg.	99	XRF	4/10/97	1	Gym	2	Door	Door	Solid	Metal	0
422	1973 Bldg.	100	XRF	4/10/97	1	Gym	2	Door	Casing	Peeling	Metal	0.01
423	1973 Bldg.	101	XRF	4/10/97	1	Gym	2	Door	Header	Solid	Wood	0
424	1973 Bldg.	102	XRF	4/10/97	1	Gym	2	Wall	Mural	Solid	Concrte	0.04
425	1973 Bldg.	103	XRF	4/10/97	1	Gym	2	Wall	Mural	Solid	Concrte	0.15
426	1973 Bldg.	104	XRF	4/10/97	1	Gym	2	Wall	Mural	Solid	Concrte	0.04
427	1973 Bldg.	105	XRF	4/10/97	1	Gym	2	Door	Door	Solid	Wood	0
428	1973 Bldg.	106	XRF	4/10/97	1	Gym	2	Door	Casing	Solid	Metal	0
429	1973 Bldg.	107	XRF	4/10/97	1	Gym	2	Wall	Mural	Solid	Concrte	0.06
430	1973 Bldg.	29	XRF	4/10/97	1	Hall	6		Radiator	Solid	Metal	0.05
431	1973 Bldg.	30	XRF	4/10/97	1	Hall	6	Wall	Midle Wall	Solid	Drywall	0.04
432	1973 Bldg.	31	XRF	4/10/97	1	Hall	6		Radiator	Solid	Metal	0.01
433	1973 Bldg.	32	XRF	4/10/97	1	Hall	6	Door	Door	Solid	Metal	0.01
434	1973 Bldg.	33	XRF	4/10/97	1	Hall	6	Door	Door	Solid	Wood	0
435	1973 Bldg.	34	XRF	4/10/97	1	Hall	6	Wall	Midle Wall	Solid	Concrte	0
436	1973 Bldg.	35	XRF	4/10/97	1	Hall	6	Door	Casing	Solid	Metal	0.01
437	1973 Bldg.	81	XRF	4/10/97	1	Hall	7	Wall	Midle Wall	Solid	Concrte	0.07
438	1973 Bldg.	82	XRF	4/10/97	1	Hall	7	Door	Door	Solid	Metal	0
439	1973 Bldg.	83	XRF	4/10/97	1	Hall	7	Door	Casing	Solid	Metal	0
440	1973 Bldg.	84	XRF	4/10/97	1	Hall	7	Wall	Midle Wall	Solid	Concrte	0.12
441	1973 Bldg.	36	XRF	4/10/97	1	Kitchen	1	Wall	Midle Wall	Solid	Concrte	0.02
442	1973 Bldg.	37	XRF	4/10/97	1	Kitchen	1	Door	Casing	Solid	Metal	0
443	1973 Bldg.	38	XRF	4/10/97	1	Restroom	111	Wall	Midle Wall	Solid	Concrte	0.03
444	1973 Bldg.	39	XRF	4/10/97	1	Restroom	111	Door	Casing	Solid	Metal	0
445	1973 Bldg.	40	XRF	4/10/97	1	Restroom	111	Door	Bthrm Still	Solid	Metal	0.18
446	1973 Bldg.	41	XRF	4/10/97	1	Restroom	111		Elec Pane	Solid	Metal	0.01
447	1973 Bldg.	42	XRF	4/10/97	1	Restroom	111		Radiator	Solid	Metal	0.02
448	1973 Bldg.	43	XRF	4/10/97	1	Restroom	222	Wall	Midle Wall	Solid	Concrte	0.02
449	1973 Bldg.	44	XRF	4/10/97	1	Restroom	222	Door	Casing	Solid	Metal	0
450	1973 Bldg.	45	XRF	4/10/97	1	Restroom	222		Radiator	Solid	Metal	0.05
451	1973 Bldg.	46	XRF	4/10/97	1	Restroom	333	Wall	Midle Wall	Solid	Concrte	0.03
452	1973 Bldg.	47	XRF	4/10/97	1	Restroom	333		Elec Pane	Solid	Metal	0
453	1973 Bldg.	48	XRF	4/10/97	1	Restroom	333	Door	Casing	Solid	Metal	0
454	1973 Bldg.	49	XRF	4/10/97	1	Restroom	333		Radiator	Solid	Metal	0.05
455	1973 Bldg.	50	XRF	4/10/97	1	Restroom	333	Wall	Bthrm Still	Solid	Metal	0.04
456	1973 Bldg.	51	XRF	4/10/97	1	Restroom	333	Ceiling		Solid	Plaster	0
457	1973 Bldg.	62	XRF	4/10/97	1	Restroom	444	Wall	Midle Wall	Solid	Concrte	0.07
458	1973 Bldg.	63	XRF	4/10/97	1	Restroom	444	Door	Casing	Solid	Metal	0
459	1973 Bldg.	74	XRF	4/10/97	1	Restroom	555	Door	Casing	Solid	Metal	0
460	1973 Bldg.	75	XRF	4/10/97	1	Restroom	555	Wall	Midle Wall	Solid	Concrte	0.01
461	1973 Bldg.	85	XRF	4/10/97	1	Room	111	Wall	Wall	Solid	Concrte	0.08
462	1973 Bldg.	86	XRF	4/10/97	1	Room	111		Radiator	Solid	Metal	0.02
463	1973 Bldg.	87	XRF	4/10/97	1	Room	111	Door	Casing	Solid	Metal	0
464	1973 Bldg.	88	XRF	4/10/97	1	Room	222	Wall	Midle Wall	Solid	Concrte	0.08
465	1973 Bldg.	89	XRF	4/10/97	1	Room	222		Radiator	Solid	Metal	0.01
466	1973 Bldg.	90	XRF	4/10/97	1	Room	222	Door	Casing	Solid	Metal	0
467	1973 Bldg.	91	XRF	4/10/97	1	Room	222	Wall	Midle Wall	Solid	Drywall	0
468	1973 Bldg.	92	XRF	4/10/97	1	Room	333	Door	Casing	Solid	Metal	0
469	1973 Bldg.	93	XRF	4/10/97	1	Room	333	Wall	Midle Wall	Solid	Drywall	0

# APPENDIX B

## LABORATORY SAMPLE ANALYSIS DATA

**LABORATORY ANALYSIS REPORT****DATE:** May 12, 1997**PAGE:**

1 Of 3

**CLIENT:** Midwest Environmental Cons.  
5385 401st Ave. NW  
Dalbo, MN 55017**PROJECT NO.:** 041697-200888**COLLECTION DATE:** 4/11/97**COLLECTED BY:** Client**RECEIVED DATE:** 4/16/97**PROJECT DESCRP.:** 62/0197V**CONTACT:** Greg Myers/Richard Cox

<b>ANALYSIS</b>	<b>UNITS</b>	<b>MDL</b>	<b>RESULT</b>	<b>DATE</b>
Lead (6010A)	mg/kg	48	1700	5/09/97
Sample No.: L972170-1 Sample ID.: PC #1				
<b>ANALYSIS</b>				
<b>ANALYSIS</b>	<b>UNITS</b>	<b>MDL</b>	<b>RESULT</b>	<b>DATE</b>
Lead (6010A)	mg/kg	26	29	5/09/97
Sample No.: L972170-2 Sample ID.: PC #2				
<b>ANALYSIS</b>				
<b>ANALYSIS</b>	<b>UNITS</b>	<b>MDL</b>	<b>RESULT</b>	<b>DATE</b>
Lead (6010A)	mg/kg	38	3900	5/09/97
Sample No.: L972170-3 Sample ID.: PC #3				
<b>ANALYSIS</b>				
<b>ANALYSIS</b>	<b>UNITS</b>	<b>MDL</b>	<b>RESULT</b>	<b>DATE</b>
Lead (6010A)	mg/kg	45	ND	5/09/97
Sample No.: L972170-4 Sample ID.: PC #4				
<b>ANALYSIS</b>				
<b>ANALYSIS</b>	<b>UNITS</b>	<b>MDL</b>	<b>RESULT</b>	<b>DATE</b>
Lead (6010A)	mg/kg	85	290	5/09/97
Sample No.: L972170-5 Sample ID.: PC #5				
<b>ANALYSIS</b>				
<b>ANALYSIS</b>	<b>UNITS</b>	<b>MDL</b>	<b>RESULT</b>	<b>DATE</b>
Lead (6010A)	ug/ft <sup>2</sup>	5.0	ND	5/09/97
Sample No.: L972170-6 Sample ID.: Swipe #1				
<b>ANALYSIS</b>				
<b>ANALYSIS</b>	<b>UNITS</b>	<b>MDL</b>	<b>RESULT</b>	<b>DATE</b>
Lead (6010A)	ug/ft <sup>2</sup>	5.0	ND	5/09/97

ND means Not Detected or below reported MDL

MDL means Method Detection Limit

mg/kg means Milligrams Per Kilogram which is equivalent to Parts Per Million (ppm)

ug/ft<sup>2</sup> means Micrograms Per Square Foot.

As a mutual protection, all reports are submitted in confidentiality and may not be reproduced except in full without written authorization.





**LABORATORY ANALYSIS REPORT**


**DATE:** May 12, 1997 **PAGE:** 3 Of 3

**CLIENT:** Midwest Environmental Cons. **PROJECT NO.:** 041697-200888  
5385 401st Ave. NW **COLLECTION DATE:** 4/11/97  
Dalbo, MN 55017 **COLLECTED BY:** Client  
**RECEIVED DATE:** 4/16/97  
**PROJECT DESCRP.:** 62/0197V

**CONTACT:** Greg Myers/Richard Cox

*This report has been reviewed by me for technical accuracy and completeness. The analyses were performed using EPA or other approved methodologies and the results were reported on an "as received" basis unless otherwise noted. Organic soil analyses were reported on a dry weight basis. The results reported relate only to the items tested. Please contact me if you have any questions or comments regarding this report. Spectrum Labs, Inc. appreciates the opportunity to provide this analytical service for you.*

Report Submitted By,



Thomas L. Halverson  
Laboratory Manager

TLH:wmc  
mec132-1



# Midwest Environmental Consulting, L.L.C.

5385 401st Ave. NW, Dalbo, MN 55017

612-689-3612/612-757-5541/FAX-612-689-5209

Client Address Frost Lake Elem

Contact \_\_\_\_\_

# CHAIN OF CUSTODY RECORD

Project Number 62-8197K

Client St Paul School Dist

Project \_\_\_\_\_

Phone/Fax \_\_\_\_\_

Sample ID	Sample Description	Collection Date/Time	Matrix (Vol./Area)	Analysis Requested
170-1 PC#1	Class # 1025 Orange on Concrete	11 Apr 97	1 sq inch	Lead ppm
2 PC#2	RestRoom #111 Stall Door	11 Apr 97	1 sq inch	Lead ppm
3 PC#3	Gym #1 Stage Door	11 Apr 97	1 sq inch	Lead ppm
4 PC#4	RestRoom #1 Ceiling	11 Apr 97	1 sq inch	Lead ppm
5 PC#5	Class # 1015 Radiator	11 Apr 97	1 sq inch	Lead ppm

Sampled By: Bob Steynor Date: 11 Apr 97 Time: \_\_\_\_\_  
 Delivered By: Bob Steynor Date: 16 Apr 97 Time: 12:00 hrs

Received By: \_\_\_\_\_ Date: \_\_\_\_\_ Time: \_\_\_\_\_  
 Delivered By: \_\_\_\_\_ Date: \_\_\_\_\_ Time: \_\_\_\_\_

Received By Lab: J. K. K... 4/16/97 Date: 4/16/97 Time: 2:00  
 Disposition of Samples \_\_\_\_\_

Notes: \_\_\_\_\_

**APPENDIX C  
INSPECTOR**

**Bob Hargrove  
MDH Lead Inspector # 416**