

# Jackson Elementary School

437 Edmund Avenue

## Project Summary:

Nyob zoo! Jackson Elementary believes that children are everyone’s priority. Our teachers, parents, community partners and the St. Paul Promise Neighborhood Initiative are all committed to nurturing each student as a remarkable individual. With two computer labs and iPads for every student, technology is used in daily instruction to accelerate learning inside and outside the classroom. Our core academics are enhanced by class work in science, music, physical education and Hmong language and culture.

It was originally constructed in 1923 at 30,328 square feet. Later additions were completed in 1971, 1998, 2000, and 2004. It is now 52,451 square feet.

The Hmong Dual Language Program at Jackson allows students to learn school subjects in two languages. As students progress to the next grade level, they become increasingly skilled in both Hmong and English. Research shows that children in a dual language program demonstrate higher achievement in school. Classes in science, music, physical education and Hmong language and culture enhance core academics. Our program is designed for all students, both native English and native Hmong speakers.



## Issues Identified By School Community In 2015

1. Remove asbestos tiles
2. Security locked fire code compliant sections
3. Air conditioning
4. Secure main entrance and control of access to school
5. Security issues
6. Windows that open
7. Lockers for all students
8. Open area - greet and meet - parents/students
9. Bathroom in kindergarten pre-school
10. Bigger lunchroom

## General Notes:

Existing utilization shown is for School Year 2014-2015

The Conceptual Utilization Plans are exploratory rather than actual construction plans and represent the design at one moment in time, which will change as the design and funding process progress.

The Conceptual Plans are included as a way to organize scopes of work into logical, efficient and meaningful projects. There is no prioritization implied in a work scope title (e.g. “Work Scope A” is not necessarily the most critical work to be done).

The plans in this document are not comprehensive of the entire building’s needs as maintenance and replacement of existing building systems such as roofs and mechanical systems are omitted to maintain graphic clarity of the overall vision generated during the Facilities Master Plan Process.

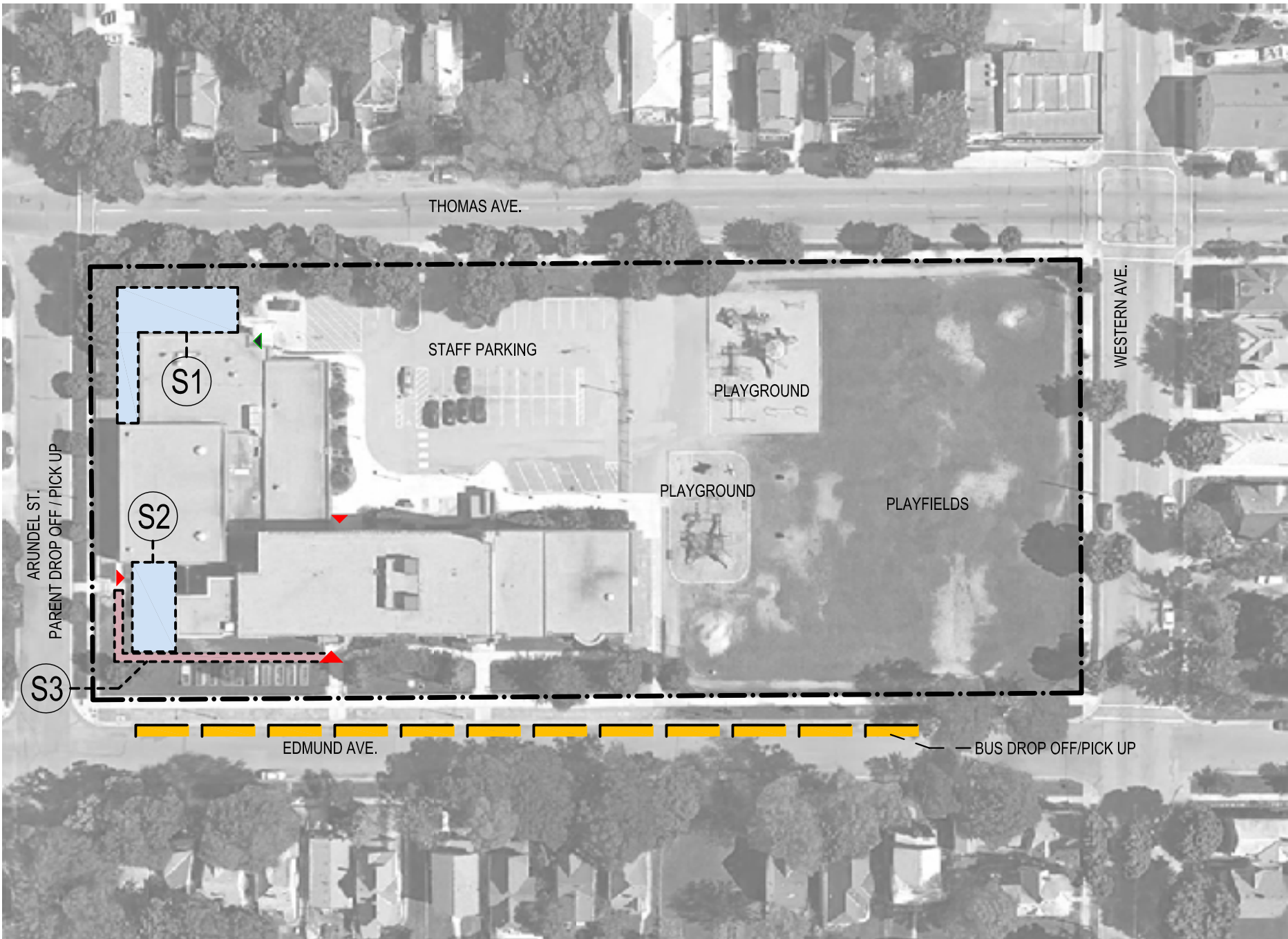
Formal zoning reviews have not been undertaken for the proposed work shown in these plans. A review with zoning and building code authorities will occur once the funding is secured.

Grade Levels:	PreK-5
SY 2014/15 Enrollment:	415
Design Enrollment:	545

# Jackson Elementary School

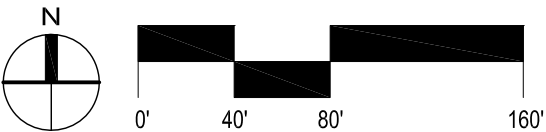
## Site Concept

- Legend:**
- S1. Cafeteria expansion (2,600 SF)
  - S2. Relocate Library / Media center expansion (1,400 SF)
  - S3. New sidewalk



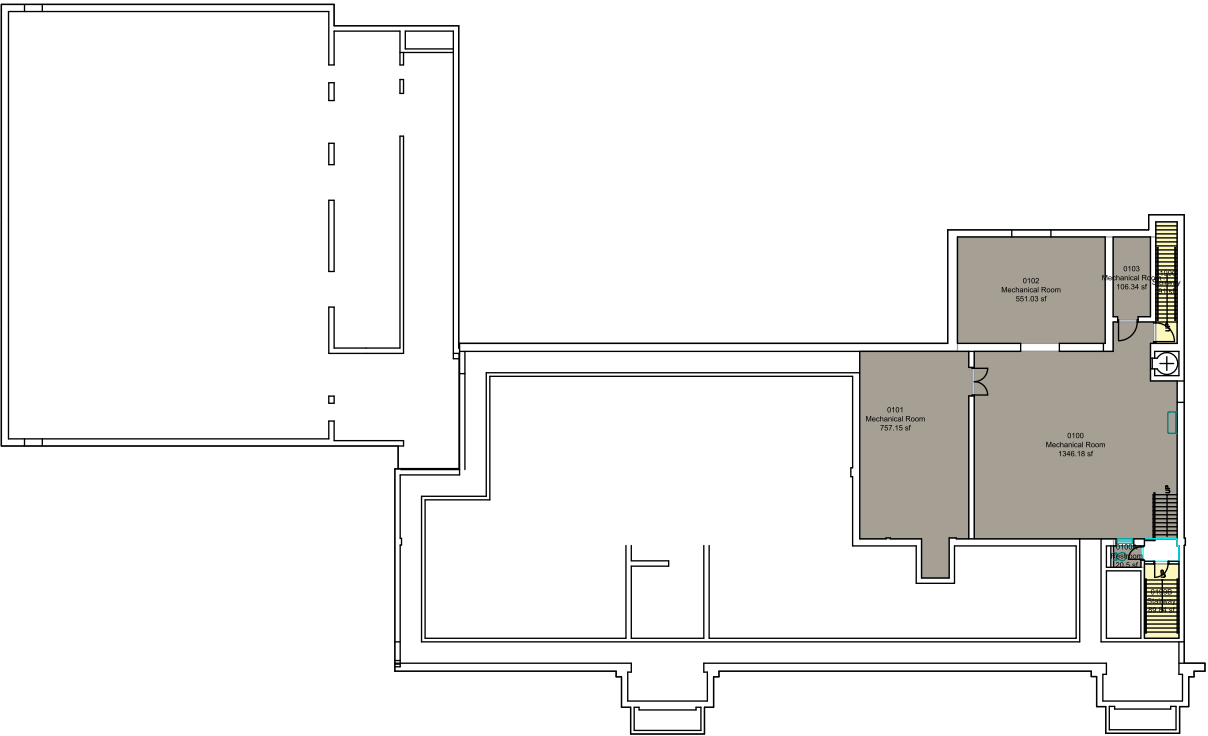
- Property Line
- ▲ Main Entry
- ▲ Secondary Entry
- ▲ Service Entry

- Alterations
- New Landscape Construction
- New Building Construction



# Jackson Elementary School

## Existing Utilization

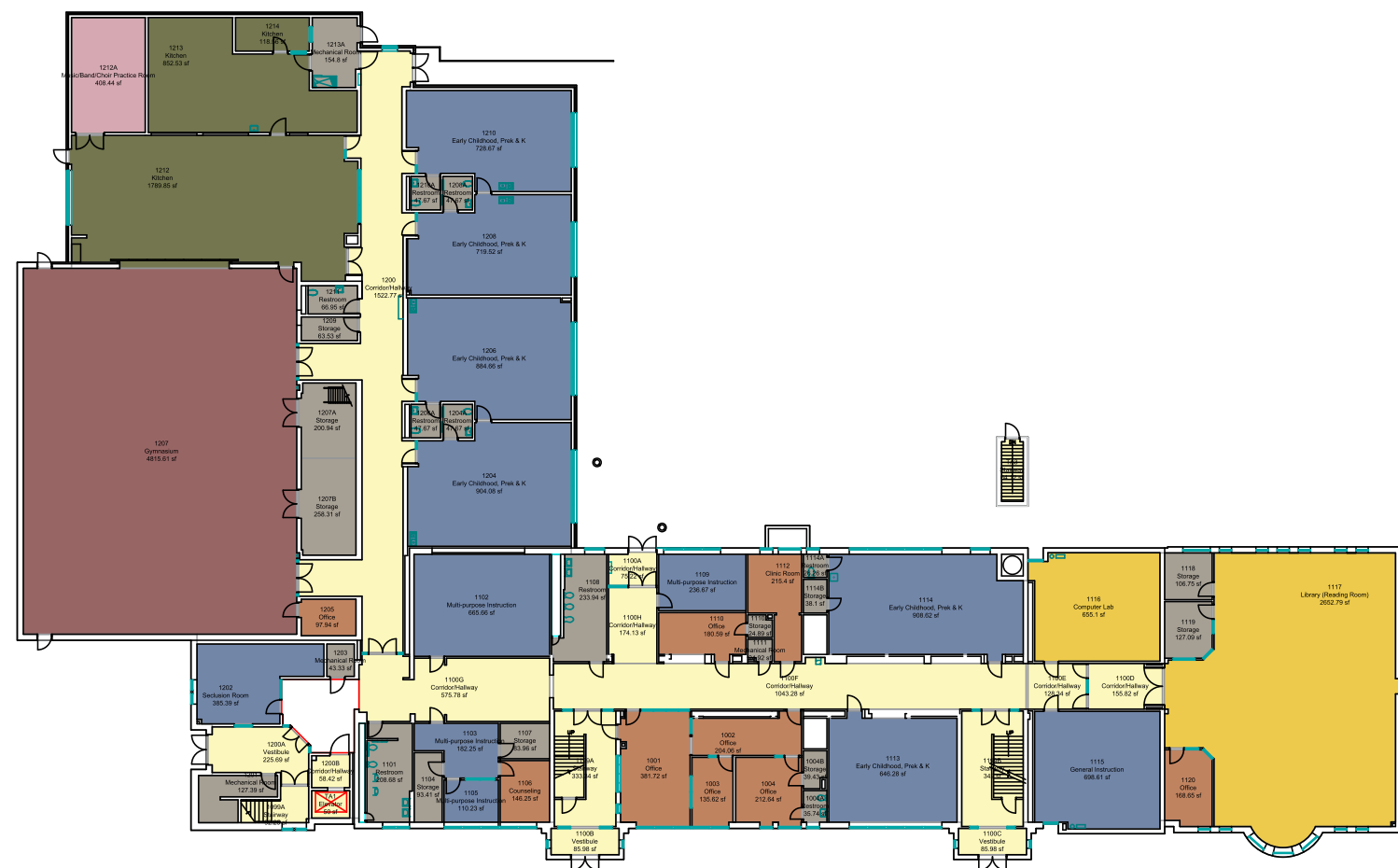


- General Learning
- Science
- Performing Arts
- Career & Tech Education
- Media Center
- Dining
- Athletics
- Circulation
- Facilities Support
- Administration
- Art

BASEMENT LEVEL

# Jackson Elementary School

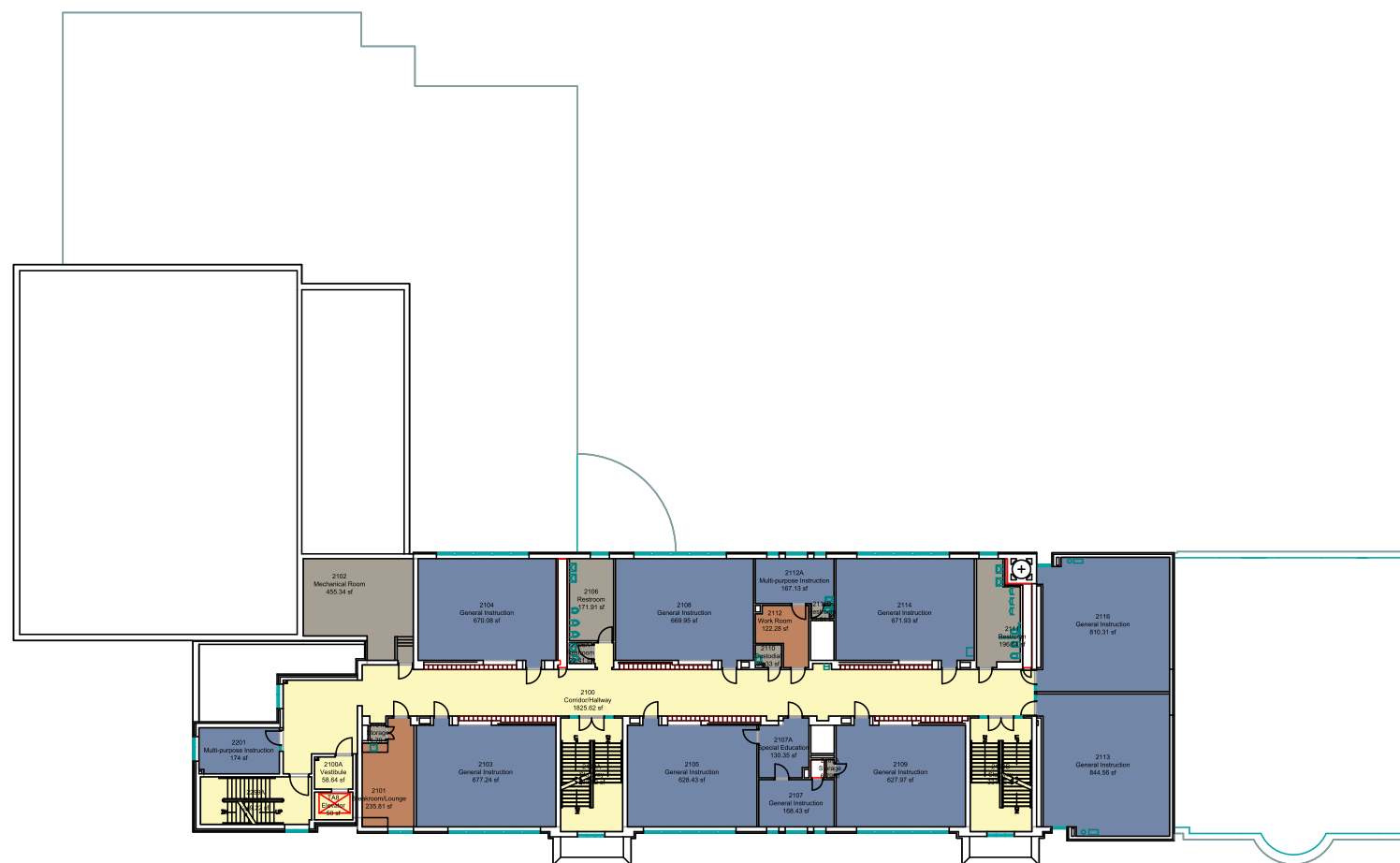
## Existing Utilization



## FIRST FLOOR

# Jackson Elementary School

## Existing Utilization



SECOND FLOOR

- General Learning
- Science
- Performing Arts
- Career & Tech Education
- Media Center
- Dining
- Athletics
- Circulation
- Facilities Support
- Administration
- Art

# Jackson Elementary School

## Existing Utilization

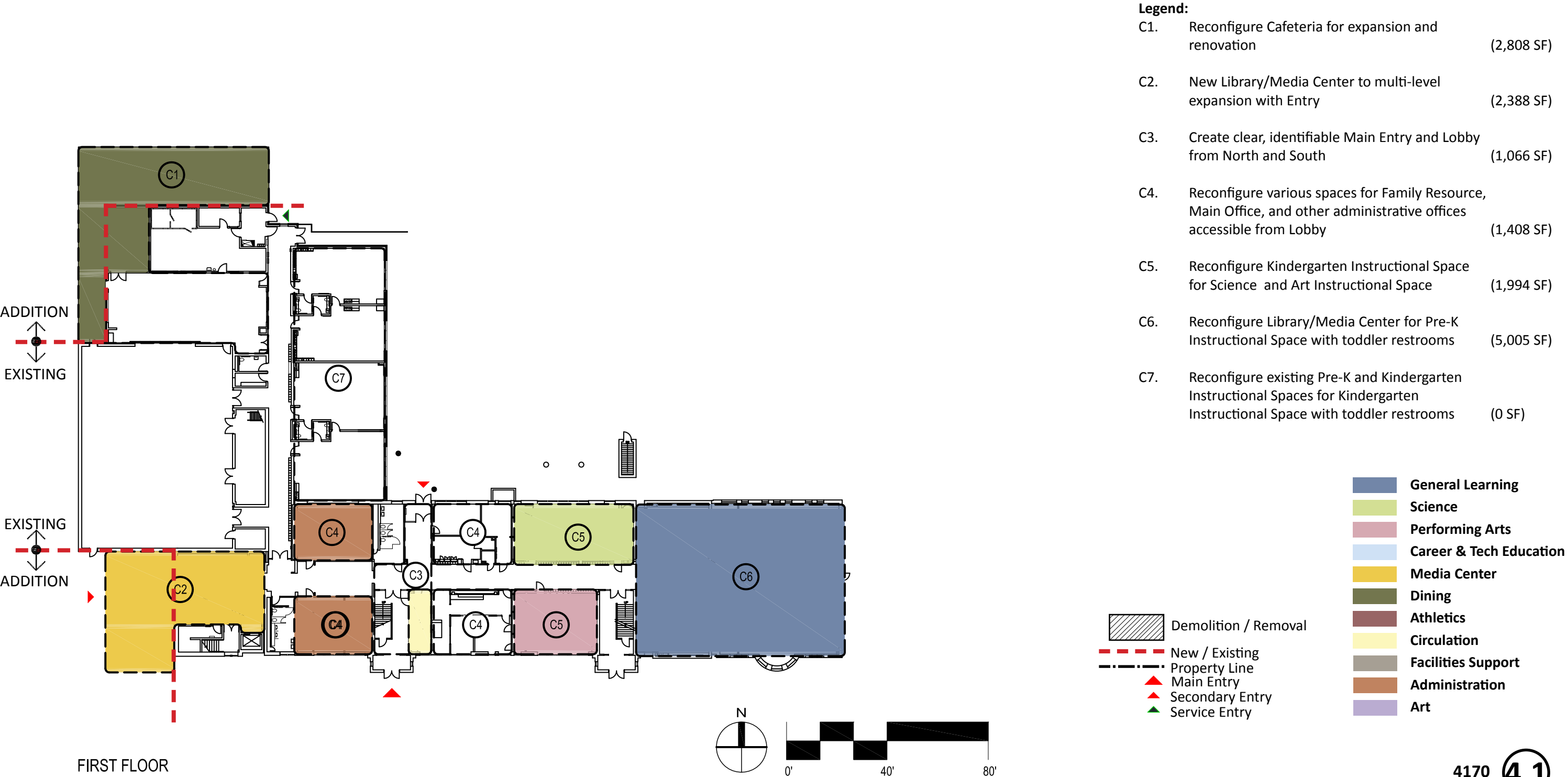


### THIRD FLOOR



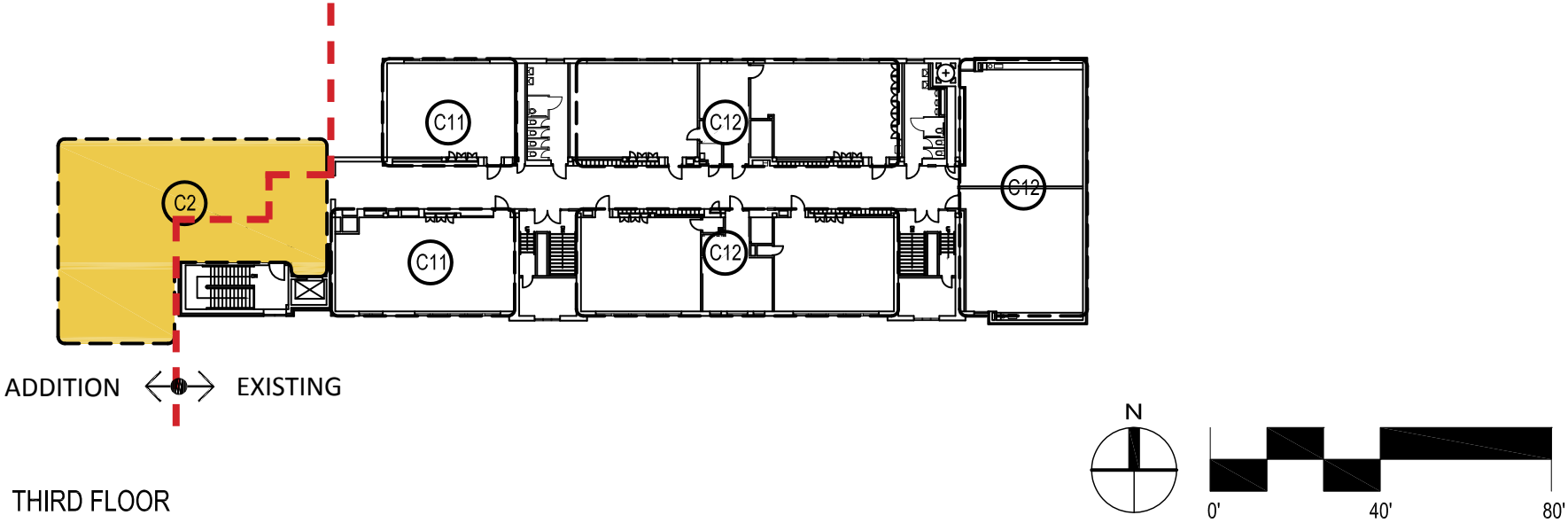
# Jackson Elementary School

## Conceptual Utilization Plan



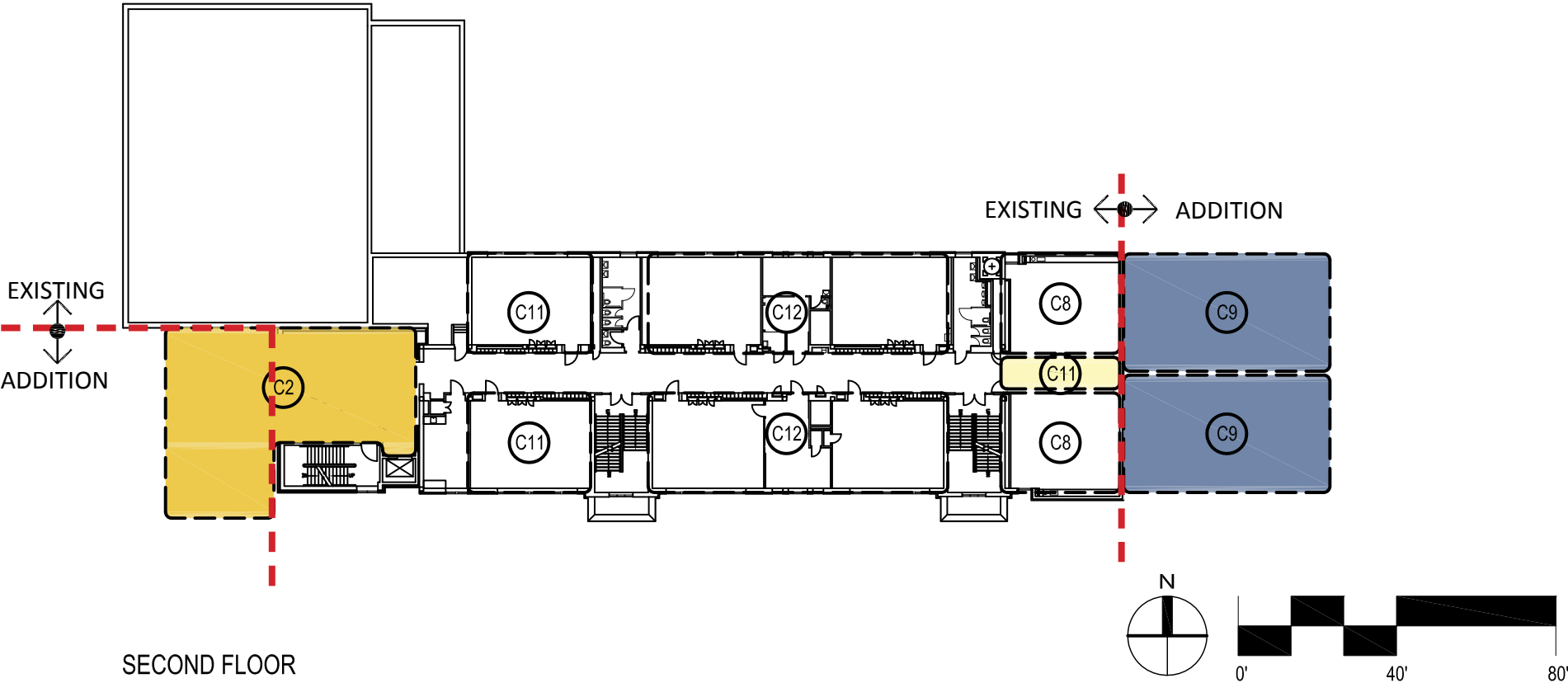
# Jackson Elementary School

## Conceptual Utilization Plan



**Legend:**

C2.	New Library/Media Center to multi-level expansion with Entry	(2,388 SF)
C8.	Reconfigure Instructional Spaces with adjacent expansion as collaborative 'Learning Area' with open and small group settings	(1,510 SF)
C9.	Create collaborative 'Learning Area' with open and small group settings.	(3,142 SF)
C10.	Create corridor with access to Instructional Spaces	(240 SF)
C11.	Reconfigure Instructional Spaces as breakout space and/or specialists' rooms	(1,573 SF)
C12.	Reconfigure Instructional Spaces as collaborative 'Learning Area' with open and small group settings	(3,809 SF)



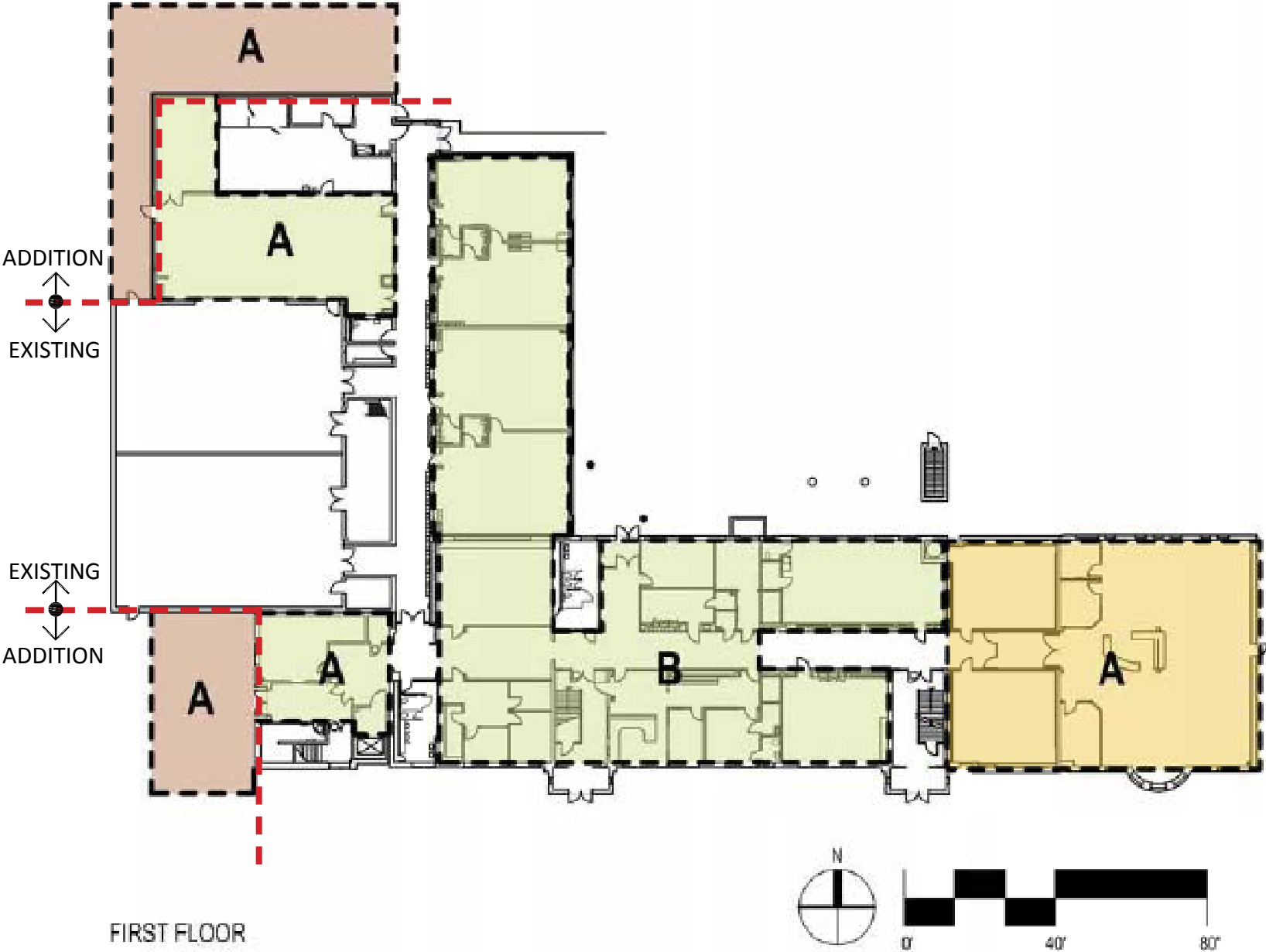
	General Learning
	Science
	Performing Arts
	Career & Tech Education
	Media Center
	Dining
	Athletics
	Circulation
	Facilities Support
	Administration
	Art

	Demolition / Removal
	New / Existing
	Property Line
	Main Entry
	Secondary Entry
	Service Entry



# Jackson Elementary School

## Conceptual Construction Plan



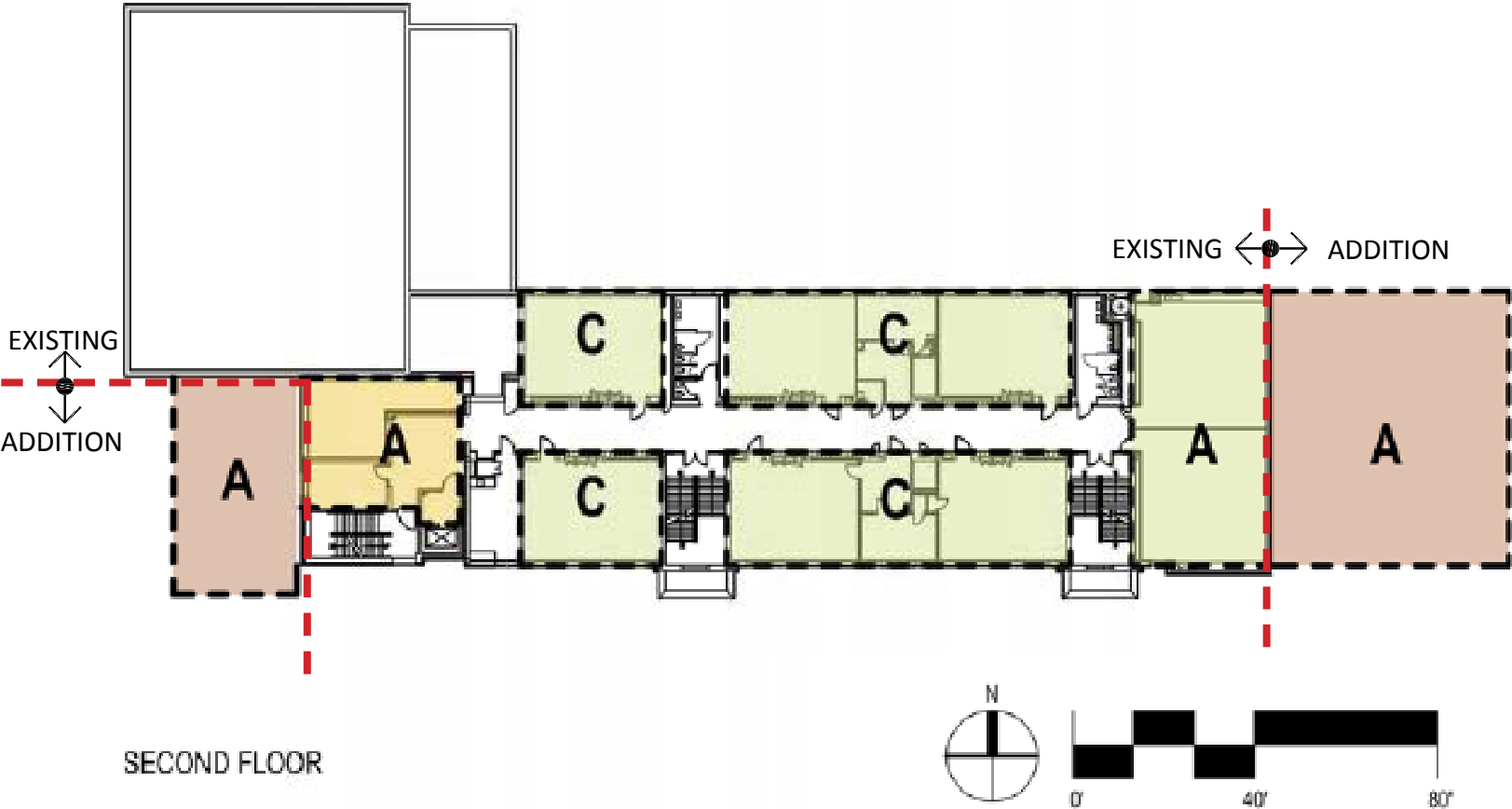
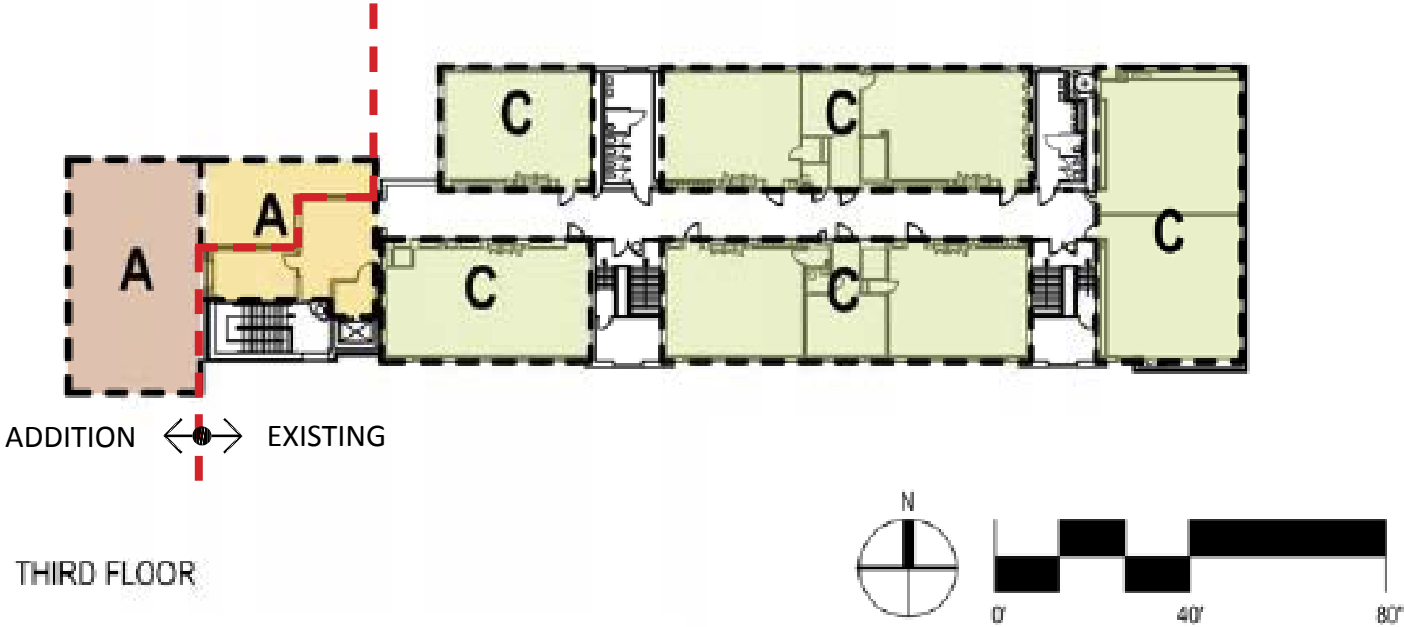
Scope Package	New Construction	Heavy Remodel	Medium Remodel	Light Remodel	Finishes Only
A	3,654 SF		3,287 SF		
B		5,005 SF	10,364 SF		
C					
TOTAL	3,654 SF	5,005 SF	13,651 SF		

Line Items	Unit	Lump Sum
Air Conditioning		
Security		
Window Renovations		
Student Lockers		

- Demolition / Removal
- New / Existing
- New Construction
- Heavy Remodel
- Medium Remodel
- Light Remodel
- Finishes Only
- No Work

# Jackson Elementary School

## Conceptual Construction Plan



Scope Package	New Construction	Heavy Remodel	Medium Remodel	Light Remodel	Finishes Only
A	9,417 SF	2,071 SF	1,810 SF		
B					
C			12,874 SF		
TOTAL	9,417 SF	2,071 SF	14,684 SF		

Line Items	Unit	Lump Sum
Air Conditioning		
Security		
Window Renovations		
Student Lockers		

- Demolition / Removal
- New / Existing
- New Construction
- Heavy Remodel
- Medium Remodel
- Light Remodel
- Finishes Only
- No Work