

Midwest
Environmental
Consulting, L.L.C.



 Printed on Recycled Paper

**Cherokee Heights Pagea Magnet
Saint Paul Public Schools**

Lead-Based Paint Inspection

Inspection Dates: 2/15/97, 2/16/97, 2/17/97

submitted to:

Saint Paul Public Schools

MEC Project # 62/0197J

INTRODUCTION

At the request of Saint Paul Public Schools Environmental Safety Department, Midwest Environmental Consulting, L.L.C. (MEC), conducted a lead-based paint inspection at Cherokee Heights Pagea Magnet, 694 Charlton Ave., St. Paul, MN. The purpose of this inspection was to identify lead-based painted, varnished, or otherwise coated building components on the interior and exterior of the school building.

The inspection protocol incorporated applicable portions of the U.S. Department of Housing and Urban Development (HUD) *Guidelines for the Evaluation and Control of Lead-based Paint Hazards in Housing* (HUD Guidelines, June 1995) and OSHA 1926.62 requirements (Lead in Construction). The HUD guidelines are formulated to guide agencies in conducting random sampling of the interiors and exteriors of dwellings and common areas in public housing. The OSHA requirement is designed to minimize worker exposure when working with material containing lead.

Confirmatory testing was conducted when inconclusive XRF results were encountered. Inconclusive refers to XRF readings less than 0.2 mg/cm² (milligrams per square centimeter). Inconclusive results were confirmed with laboratory analysis of paint chip samples (Appendix B). This report contains a list of such results.

The United States Environmental Protection Agency defines "lead-based paint" as a paint or other surface coating that contains lead equal to or in excess of 1.0 milligrams per square centimeter when analyzed by XRF or more than 0.5% by weight (5000 parts per million) by laboratory analysis of a bulk sample.

Minnesota Department of Labor and Industry (MN OSHA) adopted the EPA lead levels for the purpose of enforcing OSHA 1926.62 federal regulations. Detection of lead in dried paint film by XRF is a dependable indicator of levels of lead and is accepted by MN OSHA.

For this Saint Paul Public Schools Lead Inspection, all building components were tested on site using a Niton XL® X-ray Fluorescence Spectrum Analyzer⁽¹⁾. Building components included walls, ceilings, floors, moldings, window and door components, door surfaces, and miscellaneous features such as shelves or bookcases. Only painted or glazed surfaces or surfaces which were varnished were tested. Suspended ceilings, structural steel, and corrugated decking were not included in the inspection. Neither anodized (e.g., window sashes) nor plastic (e.g., vinyl baseboard and vinyl mini-blinds) were included in the scope of this inspection.

⁽¹⁾ This is a portable hand held machine that can analyze building components instantly for lead concentrations.

Each building was divided into unique sites based on the year of construction or renovation. Portable classrooms, playgrounds, and other detached buildings were automatically designated as a unique site. Each site was inspected independently assuming differences in painting history and construction characteristics.

SITE DESCRIPTION AND BUILDING HISTORY

According to information provided to MEC by Saint Paul Public Schools, Harriet Bishop Center was constructed in essentially two phases. The initial phase includes the 10,556 square-foot older section of the building and dates from 1925. A second phase of 76,508 square feet dates from 1971. The Community Center is also located on this property.

All room and area designations used in this report are depicted on sampling maps found in Appendix A.

XRF SAMPLE RESULTS TABLE

The results of all samples analyzed are listed in the table at the end of this section. The following is a description of the column headings:

Site	Each school is divided into sites based on their unique construction characteristics. Each site has a unique date of construction or major renovation.
Sample #	Each sample taken was given a unique number to identify the type and location of the sample. The sampling date is an integral part of the sample number.
Analysis	This defines the type of analysis which can be categorized into two types: 1) XRF: This is an on-site analysis using a hand held Niton XL® X-ray Fluorescence Spectrum Analyzer; 2) Bulk or Chip: This is a bulk sample where paint is removed from the substrate and sent to a laboratory for analysis;
Floor	This is the level of the building in which the area tested was found, example, 1 (first floor), 0 (basement), etc.
Area	This further defines the specific functional space inspected such as a classroom, exterior, playground, gym, kitchen, etc.

- Room #** This is typically the actual number on the room as identified at the building.
- Component** Building "components" included walls, ceilings, floors, moldings, window and door components, door surfaces, and miscellaneous features such as shelves or bookcases.
- Feature** Identifies more detailed information of the component.
- Condition** This describes condition of the surface, whether it is intact, cracked, peeling, or chalking.
- Substrate** This refers to the material the building component is made of (wood, concrete, drywall, metal, etc.).
- Result** This is the analysis results for lead. Less than 1.0 mg/cm² or less than 0.5% by weight is considered to be non-lead and these building components are below the action levels of EPA and HUD. (All results are in mg/cm² except where noted.)

The table of results is designed for quick information on lead concentrations of tested building components. Generally, all repetitions of a test combination within a given room or area, may be assumed to contain similar concentrations of lead to that of the tested sample. For instance, the lead concentration of a tested wooden window sash was found to be above the action level of 1.0 mg/cm² in a given classroom. The classroom has five windows, all of wood, the same color and appearing to be of the same era. It can be assumed that the remaining four wooden window sashes each contain lead above the action limit.

Other columns identify the component and the component feature tested, condition of the component, type of substrate and the result of the analytical test.

As an example, the following illustration shows that the wooden door jamb in Room 123, first floor in the 1923 building section was in good, solid condition, and had an XRF test result of 0.3 mg/cm², which is below the action level.

Illustration Only

Site	Sample #	Date	Analysis	Floor	Area	Room #	Component	Feature	Condition	Substrate	Results
1923 Bldg.	52		XRF	1	Room	123	Door	Jamb	Solid	Wood	0.3

In a similar manner, the table shows that the plaster walls in room 23, on the second floor has peeling paint with more than 1.0 mg/cm² (shaded).

ILLUSTRATION ONLY

Site	Sample #	Date	Analysis	Floor	Area	Room #	Component	Feature	Condition	Substrate	Results
1910 Bldg.	16		XRF	2	Room	23	Door	Jamb	Peeling	Wood	0.25
1910 Bldg.	17		XRF	2	Room	23	Wall	Wall	Peeling	Plaster	1.2
1910 Bldg.	18		XRF	2	Room	23		Ceiling	Peeling	Plaster	0.25
1910 Bldg.	19		XRF	2	Room	23	Wall	Baseboard	Peeling	Wood	0.002

APPLICABLE REGULATIONS

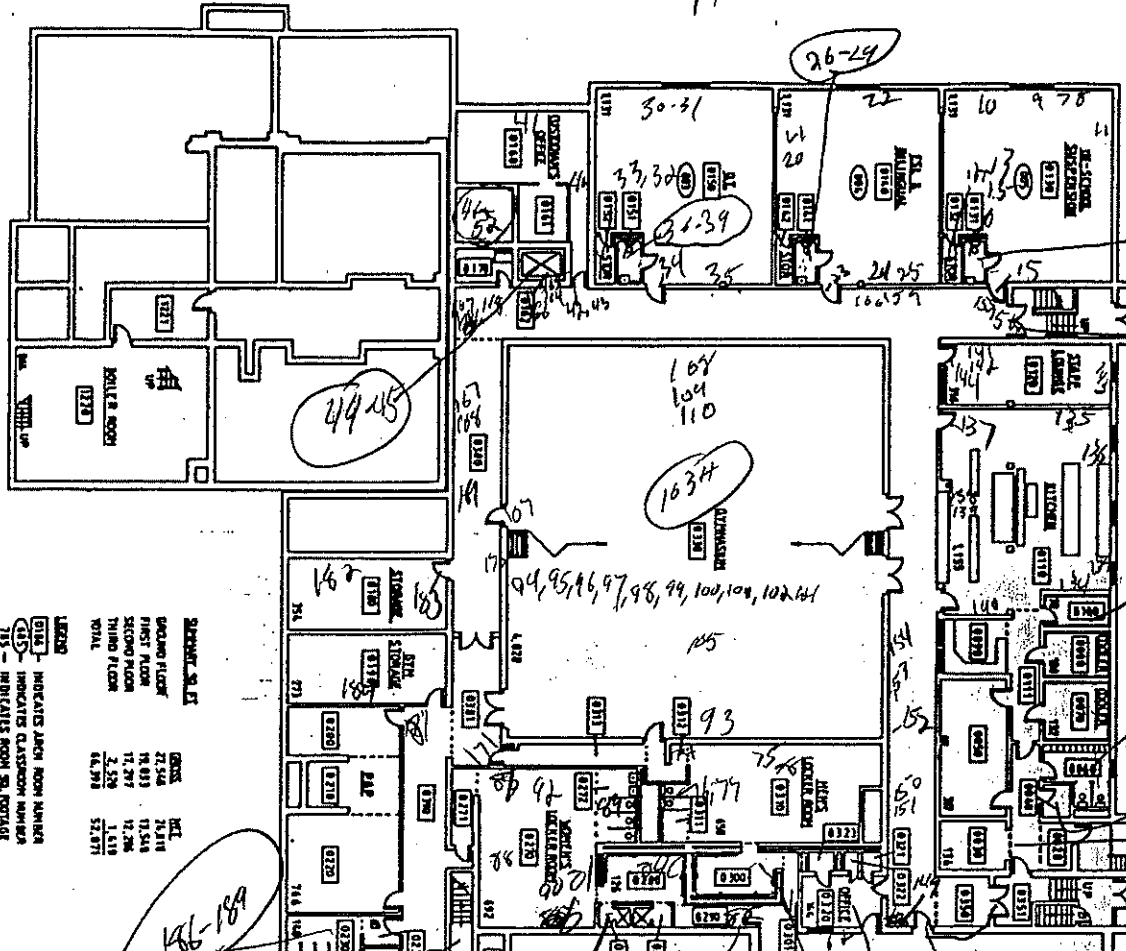
When building components test above 1.0 mg/cm² of lead by XRF or 0.5% lead by weight from laboratory analysis all employees and contractors who will be working with these components in a construction related activity must be notified. The requirements of OSHA 1926.62, Lead in Construction are enforceable. This regulation defines construction work as "work for construction, alteration and/or repair, including painting and decorating." This regulation further defines monitoring requirements to minimize employee exposure to lead during construction activities.

When work is performed on external painted building structures (i.e. flashing, fire escapes, playground equipment, handrails, etc.), regulations of the Minnesota Pollution Control Agency (MPCA) may also be applicable. For removal of lead based paint from steel structures, MN Rules 7025.0200 - 7025.0380 apply to steel materials on the exterior of a building, or on the property when levels exceed 0.5 mg/cm² based on the average of three XRF spectrum results of the sample tested, or 5,000 ppm by laboratory analysis. If it is other than a steel surface, then MPCA regulates the painted surfaces under MN Rules 7025.010 - 7025.0080, when surfaces are to be disturbed using abrasive blasting methods.

Please contact MEC directly if you have questions about any portion of this report or the lead-based paint inspection itself.

APPENDIX A
XRF TESTING DATA
WITH
LOCATION MAPS

A



LEGEND

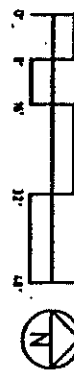
○ INDICATES ARCH. ROOM NUMBER

□ INDICATES CLASSROOM NUMBER

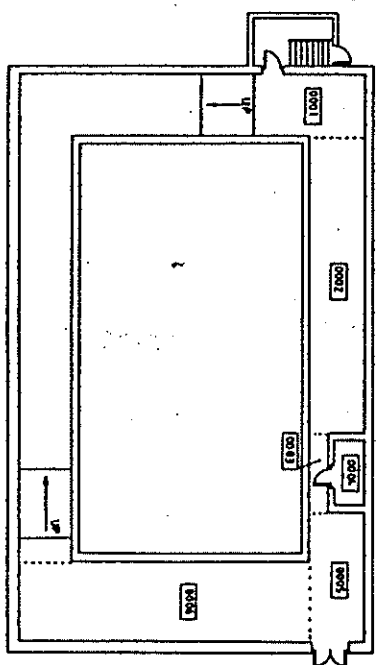
⊕ INDICATES ROOM NO. PORTAL

DEPARTMENT, SQ. FT.	CLASS.	NET
GRADING FLOOR	27,344	73,418
FIRST FLOOR	78,403	73,544
SECOND FLOOR	71,297	72,286
THIRD FLOOR	2,539	1,419
TOTAL	16,219	52,871

GROUND FLOOR PLAN



SUB POOL LEVEL



INDEPENDENT SCHOOL DIST. • 625
 360 COLBORNE STREET
 ST. PAUL, MINNESOTA 55102

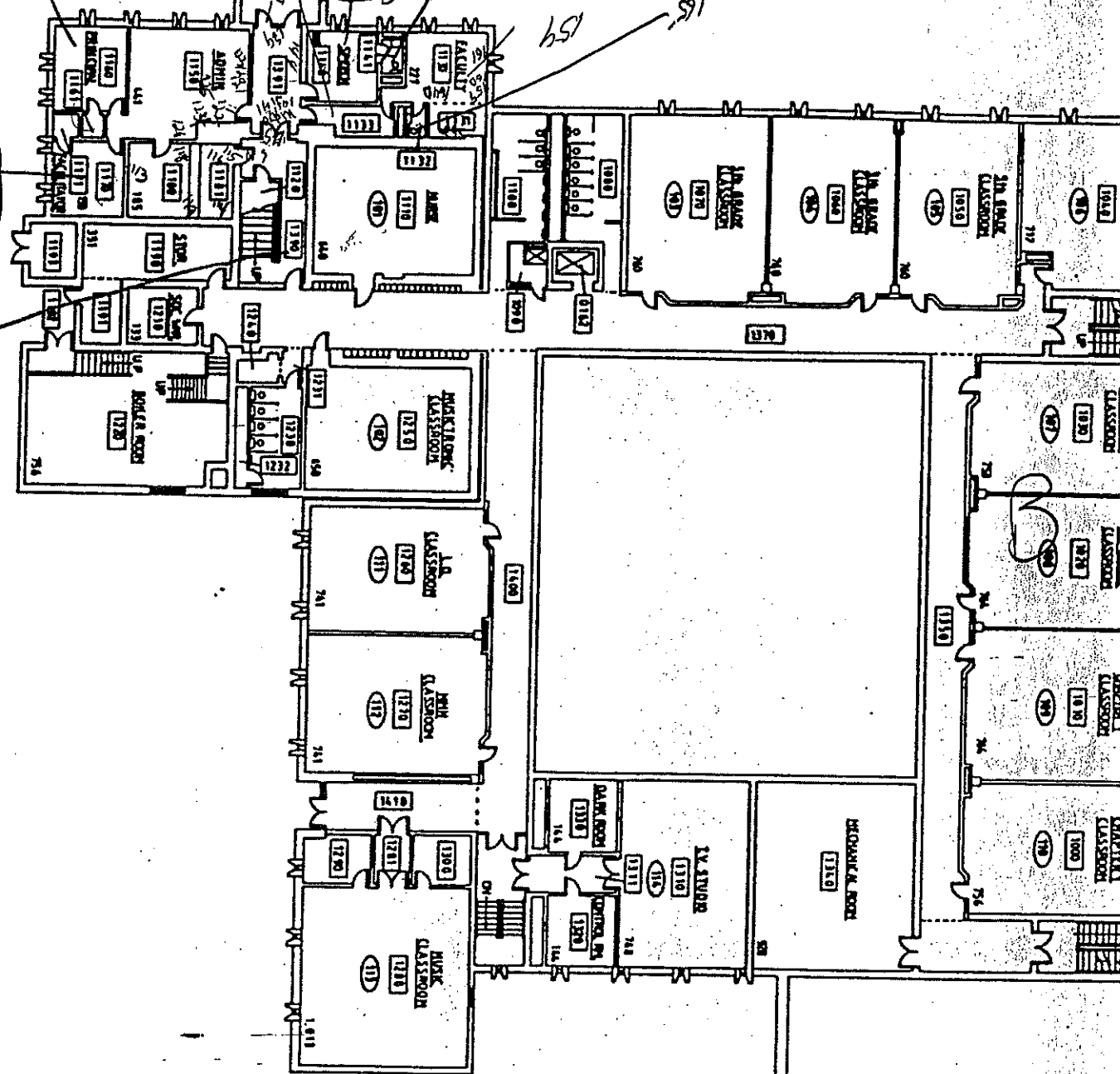
CHEROKEE HEIGHTS ELEM.
 694 CHARLTON ST.
 ST. PAUL, MN

CONSTRUCTED: 1925,71

BLK
 2
 6

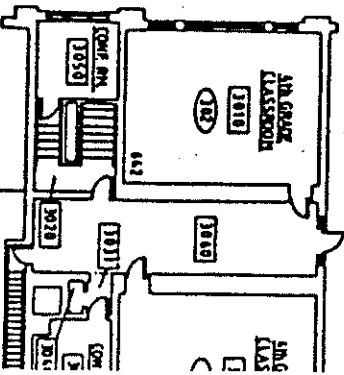
Cherokee Heights

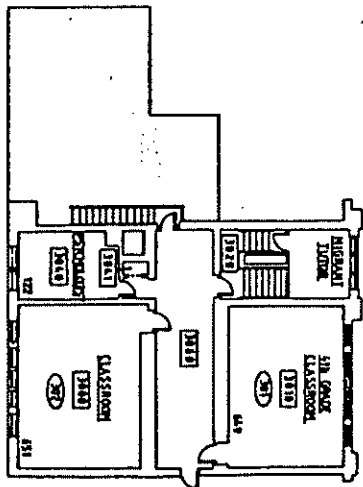
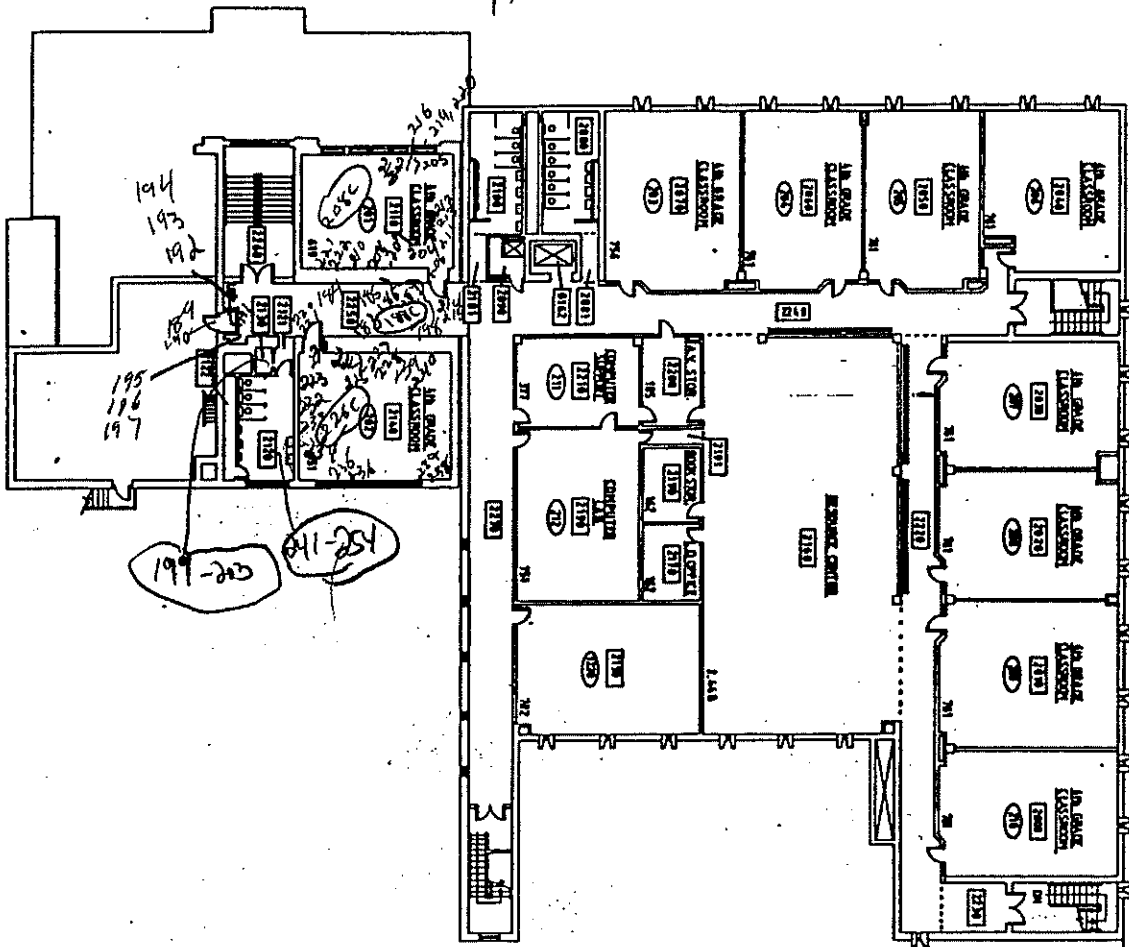
A



THIRD FLOOR PLAN

FIRST FLOOR PLAN





SECOND FLOOR PLAN



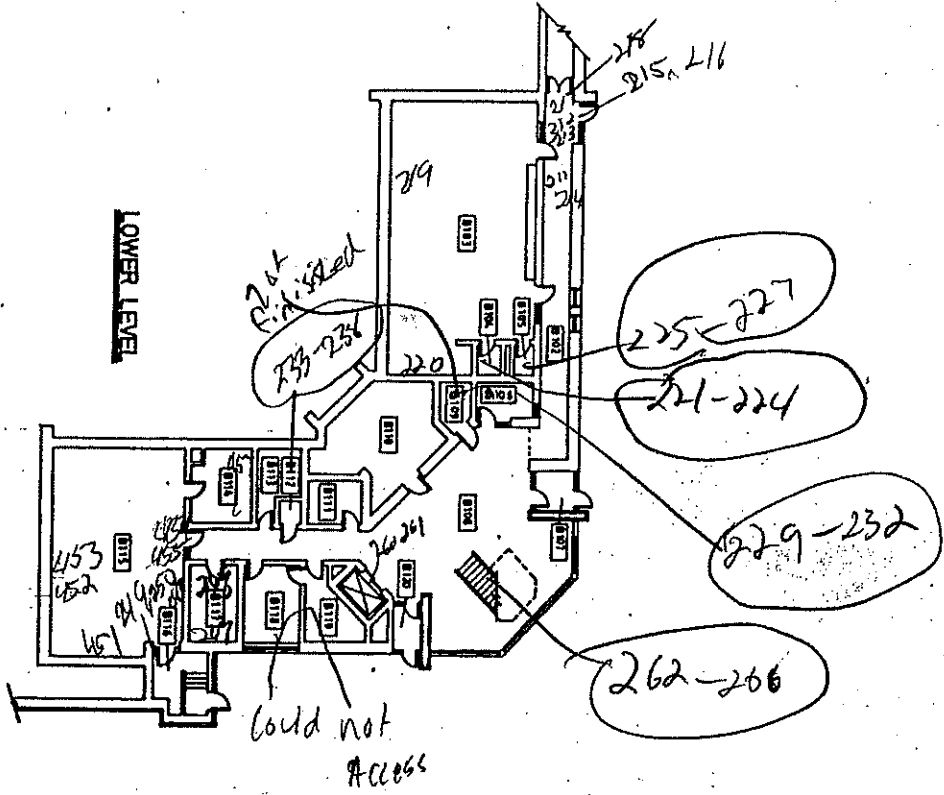
INDEPENDENT SCHOOL DIST. #625
 360 COLBORNE STREET
 ST. PAUL, MINNESOTA 55102

CHEROKEE HEIGHTS ELEM.
 694 CHARLTON ST.
 ST. PAUL, MN

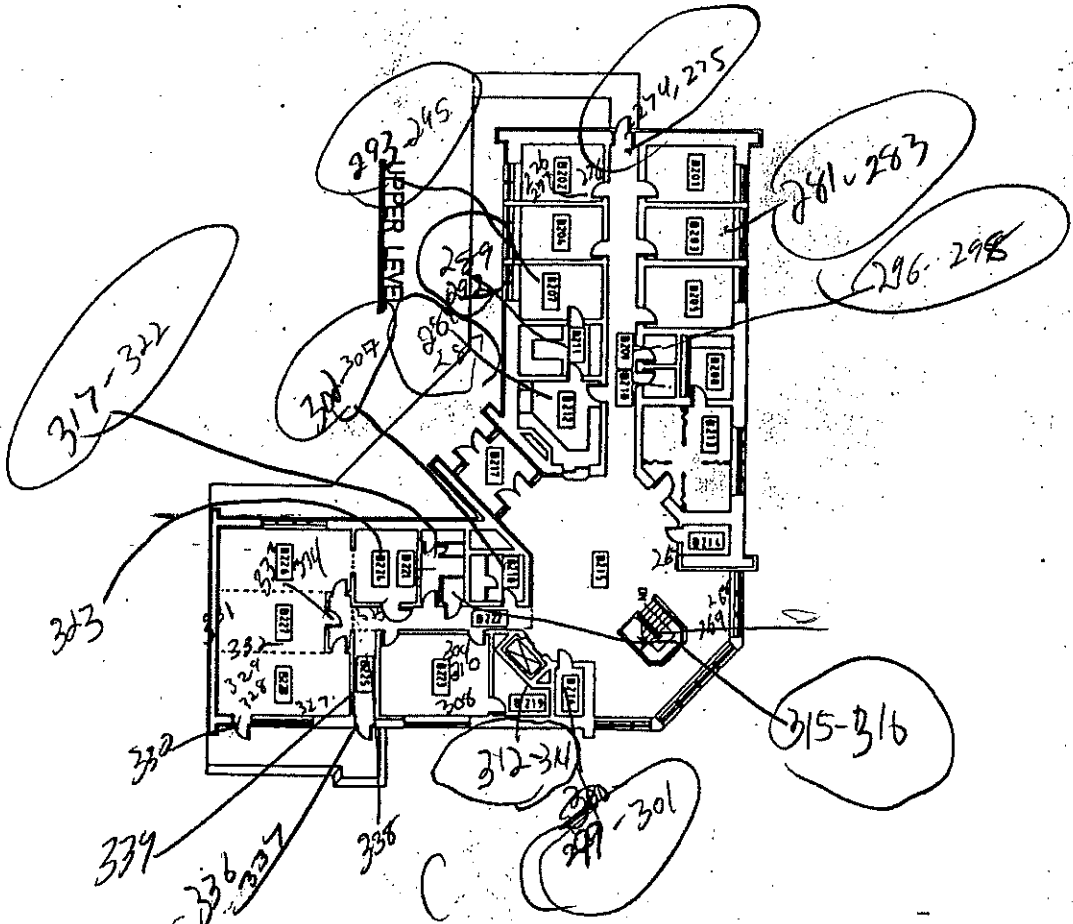
CONSTRUCTED: 1925,71

4
6

A



B



BAKER COMMUNITY CENTER

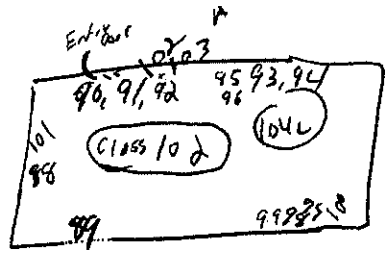
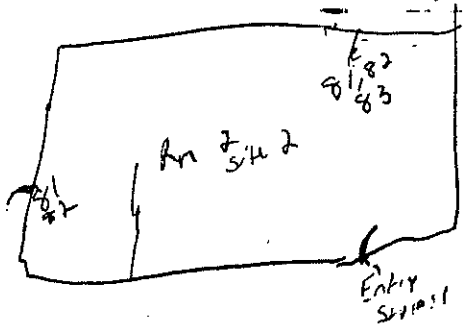
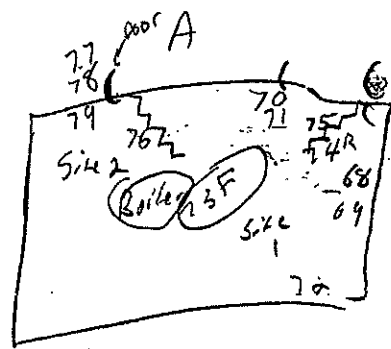
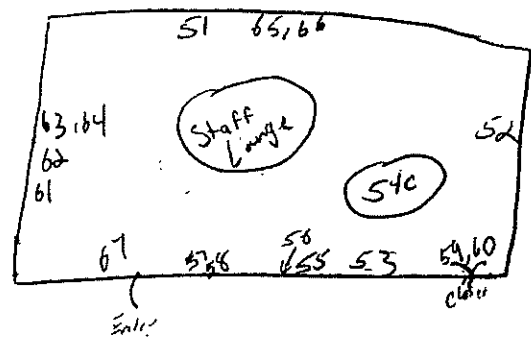
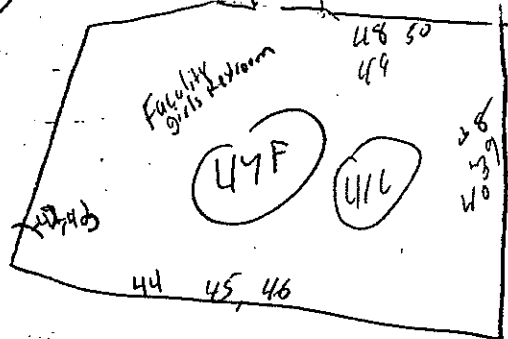
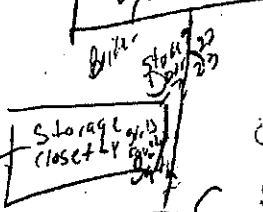
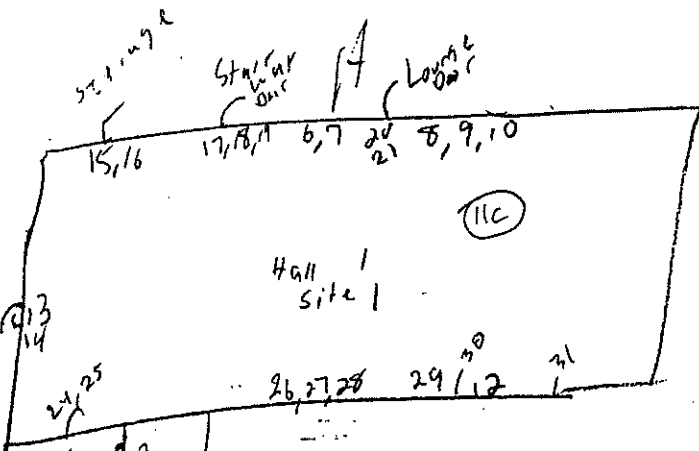
INDEPENDENT SCHOOL DIST. • 625
 360 COLBORNE STREET
 ST. PAUL, MINNESOTA 55102

CHEROKEE HEIGHTS ELEM.
 694 CHARLTON ST.
 ST. PAUL, MN

CONSTRUCTED: 1925, 71

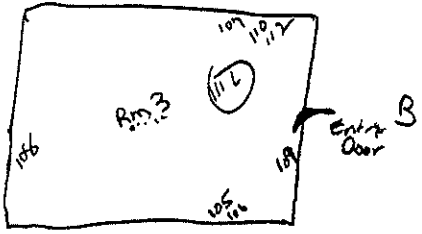
5
6

Charlton



A

D



C

Saint Paul Public Schools
 Cherokee Heights Pagea Magnet School
 Lead-Based Paint Inspection

	A	B	C	D	E	F	G	H	I	J	K	L
1	Cherokee Heights											
2												
3	Site	Sample #	Analysis	Date	Floor	Area	Room#	Component	Feature	Condition	Substrate	Result
4	1925 Bldg.	88	XRF	2/15/97	1	Classroo	102	Wall	Wall	Chalking	Plaster	1.99
5	1925 Bldg.	89	XRF	2/15/97	1	Classroo	102	Wall	Wall	Chalking	Plaster	0.02
6	1925 Bldg.	90	XRF	2/15/97	1	Classroo	102	Door	Door	Chalking	Wood	0.04
7	1925 Bldg.	91	XRF	2/15/97	1	Classroo	102	Door	Casing	Solid	Wood	0.06
8	1925 Bldg.	92	XRF	2/15/97	1	Classroo	102	Wall	Wall	Solid	Plaster	0.13
9	1925 Bldg.	93	XRF	2/15/97	1	Classroo	102	Bulletin	Board	Solid	Wood	0.04
10	1925 Bldg.	94	XRF	2/15/97	1	Classroo	102	Bulletin	Board	Solid	Wood	0.08
11	1925 Bldg.	95	XRF	2/15/97	1	Classroo	102	Cabinet	Door	Solid	Wood	0.04
12	1925 Bldg.	96	XRF	2/15/97	1	Classroo	102	Cabinet	Inside	Solid	Wood	0
13	1925 Bldg.	97	XRF	2/15/97	1	Classroo	102	Bookcase	Shelf	Solid	Wood	0.09
14	1925 Bldg.	98	XRF	2/15/97	1	Classroo	102	Bookcase	Insld	Solid	Wood	0.09
15	1925 Bldg.	99	XRF	2/15/97	1	Classroo	102	Wall	Baseboar	Solid	Wood	0.63
16	1925 Bldg.	100	XRF	2/15/97	1	Classroo	102		Radiator	Solid	Metal	0
17	1925 Bldg.	101	XRF	2/15/97	1	Classroo	102	Wall	Baseboar	Solid	Wood	0.07
18	1925 Bldg.	102	XRF	2/15/97	1	Classroo	102	Wall	Wall Rgstr	Solid	Metal	0.08
19	1925 Bldg.	103	XRF	2/15/97	1	Classroo	102	Wall	Crown mo	Solid	Wood	0.07
20	1925 Bldg.	104	XRF	2/15/97	1	Classroo	102	Ceiling		Cracked	Plaster	0.15
21	1925 Bldg.	204	XRF	2/15/97	2	Classroo	201	Wall	Wall	Cracked	Plaster	2.23
22	1925 Bldg.	205	XRF	2/15/97	2	Classroo	201	Wall	Midle Wall	Peeling	Plaster	0.25
23	1925 Bldg.	206	XRF	2/15/97	2	Classroo	201	Wall	Wall	Cracked	Plaster	1.4
24	1925 Bldg.	207	XRF	2/15/97	2	Classroo	201	Wall	Wall	Cracked	Plaster	0.12
25	1925 Bldg.	208	XRF	2/15/97	2	Classroo	201	Ceiling		Peeling	Plaster	0.06
26	1925 Bldg.	209	XRF	2/15/97	2	Classroo	201	Wall	Wall Rgstr	Solid	Metal	0.08
27	1925 Bldg.	210	XRF	2/15/97	2	Classroo	201	Wall	Crown mo	Cracked	Wood	0.11
28	1925 Bldg.	211	XRF	2/15/97	2	Classroo	201	Wire Tray	Wall	Solid	Metal	0.01
29	1925 Bldg.	212	XRF	2/15/97	2	Classroo	201	Bulletin	Board	Solid	Wood	0.07
30	1925 Bldg.	213	XRF	2/15/97	2	Classroo	201	Bulletin	Board	Solid	Wood	0.06
31	1925 Bldg.	214	XRF	2/15/97	2	Classroo	201	Door	Door	Cracked	Wood	0.05
32	1925 Bldg.	215	XRF	2/15/97	2	Classroo	201	Door	Casing	Cracked	Wood	0.05
33	1925 Bldg.	216	XRF	2/15/97	2	Classroo	201	Window	Casing	Solid	Wood	0.04
34	1925 Bldg.	217	XRF	2/15/97	2	Classroo	201		Radiator	Cracked	Metal	0
35	1925 Bldg.	218	XRF	2/15/97	2	Classroo	201	Wall	Baseboar	Solid	Wood	0.08
36	1925 Bldg.	219	XRF	2/15/97	2	Classroo	201	Bookcase	Shelf	Solid	Wood	0.36
37	1925 Bldg.	220	XRF	2/15/97	2	Classroo	201	Bookcase	Inside	Solid	Wood	0.09
38	1925 Bldg.	221	XRF	2/15/97	2	Classroo	201	Cabinet	Door	Solid	Wood	0.08
39	1925 Bldg.	222	XRF	2/15/97	2	Classroo	201	Cabinet	Inside	Solid	Wood	0.05
40	1925 Bldg.	223	XRF	2/15/97	2	Classroo	202	Wall	Wall	Solid	Plaster	1.84
41	1925 Bldg.	224	XRF	2/15/97	2	Classroo	202	Wall	Wall	Cracked	Plaster	0.14
42	1925 Bldg.	225	XRF	2/15/97	2	Classroo	202	Wall	Wall	Cracked	Plaster	0.09
43	1925 Bldg.	226	XRF	2/15/97	2	Classroo	202	Ceiling		Cracked	Plaster	0.1
44	1925 Bldg.	227	XRF	2/15/97	2	Classroo	202	Door	Crown mo	Solid	Wood	0.24
45	1925 Bldg.	228	XRF	2/15/97	2	Classroo	202	Wall	Wall Rgstr	Solid	Metal	0.21
46	1925 Bldg.	229	XRF	2/15/97	2	Classroo	202	Wall	Wall	Cracked	Plaster	0.25
47	1925 Bldg.	230	XRF	2/15/97	2	Classroo	202	Door	Door	Cracked	Wood	0.07
48	1925 Bldg.	231	XRF	2/15/97	2	Classroo	202	Door	Casing	Cracked	Wood	0.08
49	1925 Bldg.	232	XRF	2/15/97	2	Classroo	202	Bulletin	Board	Solid	Wood	0.08
50	1925 Bldg.	233	XRF	2/15/97	2	Classroo	202	Bulletin	Board	Solid	Wood	0.07
51	1925 Bldg.	234	XRF	2/15/97	2	Classroo	202	Wall	Baseboar	Solid	Wood	0.07
52	1925 Bldg.	235	XRF	2/15/97	2	Classroo	202	Window	Casing	Solid	Wood	0.06
53	1925 Bldg.	236	XRF	2/15/97	2	Classroo	202	Wall	Radiator	Cracked	Metal	0
54	1925 Bldg.	237	XRF	2/15/97	2	Classroo	202	Bookcase	Shelf	Solid	Wood	0.36
55	1925 Bldg.	238	XRF	2/15/97	2	Classroo	202	Bookcase	Inside	Cracked	Wood	0.07
56	1925 Bldg.	239	XRF	2/15/97	2	Classroo	202	Cabinet	Door	Solid	Wood	0.02
57	1925 Bldg.	240	XRF	2/15/97	2	Classroo	202	Cabinet	Inside	Solid	Wood	0
58	1925 Bldg.	234	XRF	2/16/97	2	Classroo	203	Wall	Midle Wall	Solid	Concrte	0
59	1925 Bldg.	235	XRF	2/16/97	2	Classroo	203	Wall	Mural	Solid	Concrte	0
60	1925 Bldg.	236	XRF	2/16/97	2	Classroo	203	Cabinet	Shelf	Solid	Metal	0.4
61	1925 Bldg.	237	XRF	2/16/97	2	Classroo	203	Wall	Wall	Solid	Wood	0
62	1925 Bldg.	238	XRF	2/16/97	2	Classroo	203	Wall	Midle Wall	Solid	Plaster	0
63	1925 Bldg.	239	XRF	2/16/97	2	Classroo	203	Door	Header	Solid	Wood	0
64	1925 Bldg.	240	XRF	2/16/97	2	Classroo	203	Wall	Wall Rgstr	Solid	Metal	0.07

Saint Paul Public Schools
 Cherokee Heights Pagea Magnet School
 Lead-Based Paint Inspection

	A	B	C	D	E	F	G	H	I	J	K	L
3	Site	Sample #	Analysis	Date	Floor	Area	Room#	Component	Feature	Condition	Substrate	Result
65	1925 Bldg.	241	XRF	2/16/97	2	Classroo	203	Wall	Wall Rgstr	Solid		0.01
66	1925 Bldg.	242	XRF	2/16/97	2	Classroo	203	Door	Jamb	Cracked	Metal	0.06
67	1925 Bldg.	203	XRF	2/16/97	2	Classroo	211	Wall	Midle Wall	Solid	Metal	0
68	1925 Bldg.	204	XRF	2/16/97	2	Classroo	211	Wall	Midle Wall	Solid	Plaster	0
69	1925 Bldg.	205	XRF	2/16/97	2	Classroo	211	Wire Tray		Solid	Metal	0.01
70	1925 Bldg.	206	XRF	2/16/97	2	Classroo	211	Wire Tray		Solid	Metal	0.06
71	1925 Bldg.	207	XRF	2/16/97	2	Classroo	211	Wire Tray		Solid	Metal	0.03
72	1925 Bldg.	208	XRF	2/16/97	2	Classroo	211	Door	Jamb	Solid	Metal	0
73	1925 Bldg.	195	XRF	2/16/97	2	Classroo	212	Wall	Wall	Solid	Metal	0
74	1925 Bldg.	196	XRF	2/16/97	2	Classroo	212	Wall	Wall	Solid	Metal	0
75	1925 Bldg.	197	XRF	2/16/97	2	Classroo	212	Wire Tray		Solid	Metal	0.03
76	1925 Bldg.	198	XRF	2/16/97	2	Classroo	212	Wire Tray		Solid	Metal	0.09
77	1925 Bldg.	199	XRF	2/16/97	2	Classroo	212	Wire Tray		Solid	Metal	0.01
78	1925 Bldg.	200	XRF	2/16/97	2	Classroo	212	Wall	Wall Rgstr	Solid	Metal	0
79	1925 Bldg.	201	XRF	2/16/97	2	Classroo	212	Wall	Midle Wall	Solid	Plaster	0
80	1925 Bldg.	202	XRF	2/16/97	2	Classroo	212	Door	Casing	Solid	Metal	0
81	1925 Bldg.	187	XRF	2/16/97	2	Classroo	213	Wall	Midle Wall	Solid	Metal	0
82	1925 Bldg.	188	XRF	2/16/97	2	Classroo	213	Wall	Midle Wall	Cracked	Plaster	0
83	1925 Bldg.	189	XRF	2/16/97	2	Classroo	213	Wall	Wall	Cracked	Concrte	0
84	1925 Bldg.	190	XRF	2/16/97	2	Classroo	213	Wall	Wall	Solid	Concrte	0.02
85	1925 Bldg.	191	XRF	2/16/97	2	Classroo	213		Radiator	Cracked	Metal	0
86	1925 Bldg.	192	XRF	2/16/97	2	Classroo	213	Wall	Wall Rgstr	Solid	Metal	0.04
87	1925 Bldg.	193	XRF	2/16/97	2	Classroo	213	Door	Casing	Cracked	Metal	0.06
88	1925 Bldg.	286	XRF	2/15/97	3	Classroo	301	Wall	Wall	Peeling	Plaster	0.05
89	1925 Bldg.	287	XRF	2/15/97	3	Classroo	301	Wall	Wall	Cracked	Plaster	3.29
90	1925 Bldg.	288	XRF	2/15/97	3	Classroo	301	Wall	Wall	Cracked	Plaster	0.12
91	1925 Bldg.	289	XRF	2/15/97	3	Classroo	301	Wall	Wall	Cracked	Plaster	0.22
92	1925 Bldg.	290	XRF	2/15/97	3	Classroo	301	Door	Crown mo	Cracked	Wood	0.14
93	1925 Bldg.	291	XRF	2/15/97	3	Classroo	301	Wall	Wall Rgstr	Solid	Metal	0.13
94	1925 Bldg.	292	XRF	2/15/97	3	Classroo	301	Wall	Wall	Solid		0.09
95	1925 Bldg.	293	XRF	2/15/97	3	Classroo	301	Door	Door	Cracked	Wood	0.1
96	1925 Bldg.	294	XRF	2/15/97	3	Classroo	301	Door	Casing	Solid	Wood	0.05
97	1925 Bldg.	295	XRF	2/15/97	3	Classroo	301	Window	Casing	Solid	Wood	0.06
98	1925 Bldg.	296	XRF	2/15/97	3	Classroo	301	Wall	Wall	Solid	Concrte	1.84
99	1925 Bldg.	297	XRF	2/15/97	3	Classroo	301	Wall	Radiator	Cracked	Metal	0
100	1925 Bldg.	298	XRF	2/15/97	3	Classroo	301	Bookcase	Shelf	Cracked	Wood	0.08
101	1925 Bldg.	299	XRF	2/15/97	3	Classroo	301	Bookcase	Inside	Cracked	Wood	0.07
102	1925 Bldg.	300	XRF	2/15/97	3	Classroo	301	Bulletin	Board	Cracked	Wood	0.05
103	1925 Bldg.	301	XRF	2/15/97	3	Classroo	301	Bulletin	Board	Solid	Wood	0.11
104	1925 Bldg.	302	XRF	2/15/97	3	Classroo	301	Wall	Baseboar	Solid	Wood	0.03
105	1925 Bldg.	303	XRF	2/15/97	3	Classroo	301	Unlisted		Solid	Metal	0.13
106	1925 Bldg.	304	XRF	2/15/97	3	Classroo	301	Cabinet	Door	Solid	Wood	0.05
107	1925 Bldg.	320	XRF	2/15/97	3	Classroo	301	Bulletin	Board	Cracked	Wood	0.05
108	1925 Bldg.	321	XRF	2/15/97	3	Classroo	301	Bulletin	Board	Solid	Wood	0.06
109	1925 Bldg.	322	XRF	2/15/97	3	Classroo	301	Cabinet	Door	Solid	Wood	0.06
110	1925 Bldg.	305	XRF	2/15/97	3	Classroo	302	Wall	Wall	Cracked	Plaster	2.4
111	1925 Bldg.	306	XRF	2/15/97	3	Classroo	302	Wall	Wall	Cracked	Plaster	0.08
112	1925 Bldg.	307	XRF	2/15/97	3	Classroo	302	Wall	Wall	Cracked	Plaster	0.03
113	1925 Bldg.	308	XRF	2/15/97	3	Classroo	302	Ceilling		Cracked	Plaster	0.01
114	1925 Bldg.	309	XRF	2/15/97	3	Classroo	302	Door	Crown mo	Solid	Wood	0.06
115	1925 Bldg.	310	XRF	2/15/97	3	Classroo	302	Wall	Wall Rgstr	Solid	Metal	0.13
116	1925 Bldg.	311	XRF	2/15/97	3	Classroo	302	Wall	Midle Wall	Solid	Plaster	0.17
117	1925 Bldg.	312	XRF	2/15/97	3	Classroo	302	Door	Door	Cracked	Wood	0.06
118	1925 Bldg.	313	XRF	2/15/97	3	Classroo	302	Door	Casing	Cracked	Wood	0.03
119	1925 Bldg.	314	XRF	2/15/97	3	Classroo	302	Window	Casing	Cracked	Wood	0.04
120	1925 Bldg.	315	XRF	2/15/97	3	Classroo	302	Wall	Wall	Solid	Concrte	2.05
121	1925 Bldg.	316	XRF	2/15/97	3	Classroo	302		Radiator	Cracked	Metal	0
122	1925 Bldg.	317	XRF	2/15/97	3	Classroo	302	Wall	Baseboar	Solid	Wood	0.08
123	1925 Bldg.	318	XRF	2/15/97	3	Classroo	302	Bookcase	Shelf	Solid	Wood	0.3
124	1925 Bldg.	319	XRF	2/15/97	3	Classroo	302	Bookcase	Inside	Solid	Wood	0.05
125	1925 Bldg.	6	XRF	2/15/97	1	Hall	1	Wall	Wall	Cracked	Plaster	0.01
126	1925 Bldg.	7	XRF	2/15/97	1	Hall	1	Wall	Wall	Cracked	Plaster	0.11
127	1925 Bldg.	8	XRF	2/15/97	1	Hall	1	Wall	Wall	Cracked	Plaster	0.13

Saint Paul Public Schools
 Cherokee Heights Pagea Magnet School
 Lead-Based Paint Inspection

3	A	B	C	D	E	F	G	H	I	J	K	L
Site	Sample #	Analysis	Date	Floor	Area	Room#	Component	Feature	Condition	Substrate	Result	
128	1925 Bldg.	9	XRF	2/15/97	1	Hall	1	Wire Tray		Solid	Metal	0.04
129	1925 Bldg.	10	XRF	2/15/97	1	Hall	1	Door	Crown mo	Solid	Wood	0.12
130	1925 Bldg.	11	XRF	2/15/97	1	Hall	1	Ceiling		Solid	Plaster	0.09
131	1925 Bldg.	12	XRF	2/15/97	1	Hall	1	Wall	Wall	Cracked	Plaster	2.72
132	1925 Bldg.	13	XRF	2/15/97	1	Hall	1	Door	Door	Cracked	Metal	0.03
133	1925 Bldg.	14	XRF	2/15/97	1	Hall	1	Door	Casing	Solid	Metal	0.02
134	1925 Bldg.	15	XRF	2/15/97	1	Hall	1	Door	Door	Solid	Metal	0.02
135	1925 Bldg.	16	XRF	2/15/97	1	Hall	1	Door	Casing	Solid	Metal	0.02
136	1925 Bldg.	17	XRF	2/15/97	1	Hall	1	Door	Door	Solid	Metal	0.05
137	1925 Bldg.	18	XRF	2/15/97	1	Hall	1	Window	Casing	Solid	Metal	0.35
138	1925 Bldg.	19	XRF	2/15/97	1	Hall	1	Door	Casing	Cracked	Metal	0.01
139	1925 Bldg.	20	XRF	2/15/97	1	Hall	1	Door	Door	Solid	Wood	0.05
140	1925 Bldg.	21	XRF	2/15/97	1	Hall	1	Door	Casing	Cracked	Wood	0.04
141	1925 Bldg.	22	XRF	2/15/97	1	Hall	1	Door	Casing	Cracked		0.01
142	1925 Bldg.	23	XRF	2/15/97	1	Hall	1	Door	Jamb	Solid	Wood	0.02
143	1925 Bldg.	24	XRF	2/15/97	1	Hall	1	Door	Door	Cracked	Metal	0.06
144	1925 Bldg.	25	XRF	2/15/97	1	Hall	1	Door	Casing	Cracked	Metal	1.18
145	1925 Bldg.	26	XRF	2/15/97	1	Hall	1	Wall	Chair rail	Solid	Wood	0.08
146	1925 Bldg.	27	XRF	2/15/97	1	Hall	1	Cabinet	Door	Solid	Wood	0.02
147	1925 Bldg.	28	XRF	2/15/97	1	Hall	1	Cabinet	Shelf	Solid	Wood	0.02
148	1925 Bldg.	29	XRF	2/15/97	1	Hall	1		Elec Pane	Solid	Metal	0.03
149	1925 Bldg.	30	XRF	2/15/97	1	Hall	1		Locker	Cracked	Metal	0.69
150	1925 Bldg.	31	XRF	2/15/97	1	Hall	1	Wall	Wall Rgstr	Solid	Metal	0.12
151	1925 Bldg.	32	XRF	2/15/97	1	Hall	1	Closet	Wall	Cracked	Plaster	3.76
152	1925 Bldg.	33	XRF	2/15/97	1	Hall	1	Wall	Midle Wall	Cracked	Wood	5.09
153	1925 Bldg.	34	XRF	2/15/97	1	Hall	1	Coat Rack		Cracked	Wood	0.1
154	1925 Bldg.	35	XRF	2/15/97	1	Hall	1	Bookcase	Shelf	Cracked	Wood	0.13
155	1925 Bldg.	36	XRF	2/15/97	1	Hall	1	Ceiling		Solid	Plaster	5.09
156	1925 Bldg.	37	XRF	2/15/97	1	Hall	1	Closet	Floor	Cracked	Concrte	0.08
157	1925 Bldg.	183	XRF	2/15/97	2	Hall	2	Wall	Wall	Cracked	Plaster	2.38
158	1925 Bldg.	184	XRF	2/15/97	2	Hall	2	Wall	Wall	Cracked	Plaster	0.13
159	1925 Bldg.	185	XRF	2/15/97	2	Hall	2	Wall	Wall	Cracked	Plaster	0.05
160	1925 Bldg.	186	XRF	2/15/97	2	Hall	2	Wall	Wall Rgstr	Solid	Metal	0.04
161	1925 Bldg.	187	XRF	2/15/97	2	Hall	2	Door	Crown mo	Solid	Wood	0.13
162	1925 Bldg.	188	XRF	2/15/97	2	Hall	2	Ceiling		Solid	Plaster	0.04
163	1925 Bldg.	189	XRF	2/15/97	2	Hall	2	Door	Door	Solid	Metal	0.03
164	1925 Bldg.	190	XRF	2/15/97	2	Hall	2	Door	Casing	Solid	Metal	0.02
165	1925 Bldg.	191	XRF	2/15/97	2	Hall	2	Stairs	Tread	Cracked	Wood	0.03
166	1925 Bldg.	192	XRF	2/15/97	2	Hall	2	Wall	Chair rail	Solid	Wood	0
167	1925 Bldg.	193	XRF	2/15/97	2	Hall	2	Wall	Wall	Solid	Wood	0
168	1925 Bldg.	194	XRF	2/15/97	2	Hall	2	Unlisted	Wall	Solid	Metal	3.69
169	1925 Bldg.	195	XRF	2/15/97	2	Hall	2	Wall	Chair rail	Solid	Wood	0.22
170	1925 Bldg.	196	XRF	2/15/97	2	Hall	2	Cabinet	Door	Solid	Wood	0.06
171	1925 Bldg.	197	XRF	2/15/97	2	Hall	2	Cabinet	Inside	Solid	Wood	0.02
172	1925 Bldg.	198	XRF	2/15/97	2	Hall	2		Locker	Cracked	Metal	0.9
173	1925 Bldg.	199	XRF	2/15/97	2	Hall	2	Closet	Casing	Cracked	Wood	0.06
174	1925 Bldg.	200	XRF	2/15/97	2	Hall	2	Closet	Wall	Cracked	Plaster	3.24
175	1925 Bldg.	201	XRF	2/15/97	2	Hall	2	Closet	Wall	Cracked	Plaster	3.99
176	1925 Bldg.	202	XRF	2/15/97	2	Hall	2	Closet	Shelf	Solid	Wood	0.12
177	1925 Bldg.	203	XRF	2/15/97	2	Hall	2	Closet	Floor	Cracked	Concrte	0.04
178	1925 Bldg.	267	XRF	2/15/97	3	Hall	3	Wall	Wall	Cracked	Plaster	5.09
179	1925 Bldg.	268	XRF	2/15/97	3	Hall	3	Wall	Wall	Cracked	Plaster	0.12
180	1925 Bldg.	269	XRF	2/15/97	3	Hall	3	Wall	Wall	Cracked	Plaster	0.1
181	1925 Bldg.	270	XRF	2/15/97	3	Hall	3	Wall	Wall Rgstr	Solid	Metal	0.03
182	1925 Bldg.	271	XRF	2/15/97	3	Hall	3	Door	Crown mo	Cracked	Wood	0.13
183	1925 Bldg.	272	XRF	2/15/97	3	Hall	3	Wall	Wall	Cracked	Plaster	0.1
184	1925 Bldg.	273	XRF	2/15/97	3	Hall	3	Door	Door	Solid	Wood	0.06
185	1925 Bldg.	274	XRF	2/15/97	3	Hall	3	Door	Casing	Solid	Wood	0.04
186	1925 Bldg.	275	XRF	2/15/97	3	Hall	3	Door	Door	Solid	Metal	0.03
187	1925 Bldg.	276	XRF	2/15/97	3	Hall	3	Door	Casing	Solid	Metal	0.05
188	1925 Bldg.	277	XRF	2/15/97	3	Hall	3	Wall	Chair rail	Solid	Wood	0
189	1925 Bldg.	278	XRF	2/15/97	3	Hall	3	Wall	Chair rail	Solid	Wood	0.19
190	1925 Bldg.	279	XRF	2/15/97	3	Hall	3		Locker	Cracked	Metal	0.67

Saint Paul Public Schools
 Cherokee Heights Pagea Magnet School
 Lead-Based Paint Inspection

	A	B	C	D	E	F	G	H	I	J	K	L
3	Site	Sample #	Analysis	Date	Floor	Area	Room#	Component	Feature	Condition	Substrate	Result
191	1925 Bldg.	280	XRF	2/15/97	3	Hall	3		Locker	Cracked		0.8
192	1925 Bldg.	281	XRF	2/15/97	3	Hall	3	Closet	Wall	Cracked	Plaster	2.56
193	1925 Bldg.	282	XRF	2/15/97	3	Hall	3	Closet	Wall	Cracked		2.75
194	1925 Bldg.	283	XRF	2/15/97	3	Hall	3	Closet	Casing	Solid	Wood	0.03
195	1925 Bldg.	284	XRF	2/15/97	3	Hall	3	Bookcase	Shelf	Solid	Wood	0.2
196	1925 Bldg.	285	XRF	2/15/97	3	Hall	3	Closet	Floor	Cracked	Concrte	0.09
197	1925 Bldg.	338	XRF	2/15/97	3	Hall	3	Cabinet	Elec Pane	Solid	Metal	0.02
198	1925 Bldg.	180	XRF	2/16/97	2	Hall	6	Wall	Midle Wall	Cracked	Concrte	0.02
199	1925 Bldg.	181	XRF	2/16/97	2	Hall	6	Door	Casing	Solid	Metal	0.02
200	1925 Bldg.	182	XRF	2/16/97	2	Hall	6	Window	Casing	Cracked	Metal	0.29
201	1925 Bldg.	183	XRF	2/16/97	2	Hall	6	Wall	Midle Wall	Solid	Concrte	0
202	1925 Bldg.	184	XRF	2/16/97	2	Hall	6		Radiator	Solid	Metal	0.02
203	1925 Bldg.	185	XRF	2/16/97	2	Hall	6	Wall	Wall Rgstr	Solid	Metal	0.01
204	1925 Bldg.	186	XRF	2/16/97	2	Hall	6		Elec Pane	Solid	Metal	0.02
205	1925 Bldg.	194	XRF	2/16/97	2	Hall	6	Wall	Midle Wall	Solid	Metal	0
206	1925 Bldg.	223	XRF	2/16/97	2	Hall	7	Wall	Midle Wall	Cracked	Concrte	0
207	1925 Bldg.	224	XRF	2/16/97	2	Hall	7	Wall	Midle Wall	Solid	Metal	0
208	1925 Bldg.	225	XRF	2/16/97	2	Hall	7	Wall	Midle Wall	Solid	Plaster	0
209	1925 Bldg.	226	XRF	2/16/97	2	Hall	7	Door	Casing	Cracked	Metal	0.09
210	1925 Bldg.	227	XRF	2/16/97	2	Hall	7	Door	Door	Cracked	Metal	0.13
211	1925 Bldg.	228	XRF	2/16/97	2	Hall	7	Closet	Casing	Cracked	Metal	0.02
212	1925 Bldg.	229	XRF	2/16/97	2	Hall	7	Ceiling		Solid	Plaster	0
213	1925 Bldg.	230	XRF	2/16/97	2	Hall	7	Wall	Wall Rgstr	Solid	Metal	0.02
214	1925 Bldg.	231	XRF	2/16/97	2	Hall	7	Door	Casing	Solid	Metal	0.03
215	1925 Bldg.	232	XRF	2/16/97	2	Hall	7	Window	Casing	Cracked	Metal	0.51
216	1925 Bldg.	233	XRF	2/16/97	2	Hall	7	Wall	Elec Pane	Solid	Metal	0.01
217	1925 Bldg.	250	XRF	2/16/97	2	Library	1	Wall	Midle Wall	Solid	Metal	0.02
218	1925 Bldg.	251	XRF	2/16/97	2	Library	1	Wall	Wall	Solid	Concrte	0.06
219	1925 Bldg.	252	XRF	2/16/97	2	Library	1	Wall	Wall	Solid	Concrte	0.01
220	1925 Bldg.	253	XRF	2/16/97	2	Library	1	Wall	Radiator	Solid	Metal	0
221	1925 Bldg.	254	XRF	2/16/97	2	Library	1	Wall	Column	Solid	Plaster	0.01
222	1925 Bldg.	255	XRF	2/16/97	2	Library	1	Wall	Wall	Solid	Wood	0
223	1925 Bldg.	256	XRF	2/16/97	2	Library	1	Wire Tray	Wall	Solid	Metal	0.03
224	1925 Bldg.	257	XRF	2/16/97	2	Library	1	Wire Tray	Wall	Solid	Metal	0.01
225	1925 Bldg.	340	XRF	2/17/97	1	Outside	0	Window	Sill	Peellng	Concrte	0.1
226	1925 Bldg.	38	XRF	2/15/97	1	Restroom	1	Wall	Wall	Cracked	Tile	0.05
227	1925 Bldg.	39	XRF	2/15/97	1	Restroom	1	Wall	Midle Wall	Cracked	Plaster	5.09
228	1925 Bldg.	40	XRF	2/15/97	1	Restroom	1	Wall	Wall	Cracked	Plaster	5.09
229	1925 Bldg.	41	XRF	2/15/97	1	Restroom	1	Ceiling		Cracked	Plaster	5.09
230	1925 Bldg.	42	XRF	2/15/97	1	Restroom	1	Door	Door	Solid	Wood	0.05
231	1925 Bldg.	43	XRF	2/15/97	1	Restroom	1	Door	Casing	Solid	Wood	0.06
232	1925 Bldg.	44	XRF	2/15/97	1	Restroom	1	Window	Casing	Solid	Wood	0.07
233	1925 Bldg.	45	XRF	2/15/97	1	Restroom	1	Wall	Wall	Solid	Concrte	1.81
234	1925 Bldg.	46	XRF	2/15/97	1	Restroom	1		Radiator	Solid	Metal	0.01
235	1925 Bldg.	47	XRF	2/15/97	1	Restroom	1	Floor		Cracked	Concrte	0.08
236	1925 Bldg.	48	XRF	2/15/97	1	Restroom	1	Wall	Chair rail	Solid	Wood	0.06
237	1925 Bldg.	49	XRF	2/15/97	1	Restroom	1	Wall	Stall Door	Cracked	Wood	0.08
238	1925 Bldg.	50	XRF	2/15/97	1	Restroom	1	Wall	Wall Rgstr	Solid	Metal	1.85
239	1925 Bldg.	241	XRF	2/15/97	2	Restroom	2	Wall	Wall	Solid	Plaster	5.09
240	1925 Bldg.	243	XRF	2/15/97	2	Restroom	2	Wall	Wall	Cracked	Plaster	5.09
241	1925 Bldg.	244	XRF	2/15/97	2	Restroom	2	Door	Door	Solid	Wood	0.04
242	1925 Bldg.	245	XRF	2/15/97	2	Restroom	2	Door	Casing	Solid	Wood	0.06
243	1925 Bldg.	246	XRF	2/15/97	2	Restroom	2	Wall	Chair rail	Solid	Wood	0.32
244	1925 Bldg.	247	XRF	2/15/97	2	Restroom	2	Window	Casing	Solid	Wood	0.09
245	1925 Bldg.	248	XRF	2/15/97	2	Restroom	2	Window	Stool	Solid	Wood	0.09
246	1925 Bldg.	249	XRF	2/15/97	2	Restroom	2	Wall	Wall	Solid	Concrte	2.12
247	1925 Bldg.	250	XRF	2/15/97	2	Restroom	2		Radiator	Solid	Metal	0
248	1925 Bldg.	251	XRF	2/15/97	2	Restroom	2	Floor		Cracked	Concrte	0.09
249	1925 Bldg.	252	XRF	2/15/97	2	Restroom	2	Wall	Wall Rgstr	Peellng	Metal	0.04
250	1925 Bldg.	253	XRF	2/15/97	2	Restroom	2	Wall	Stall Door	Solid	Wood	0.04
251	1925 Bldg.	254	XRF	2/15/97	2	Restroom	2	Ceiling		Cracked	Plaster	5.09
252	1925 Bldg.	209	XRF	2/16/97	2	Restroom	5	Wall	Midle Wall	Solid	Concrte	0.02
253	1925 Bldg.	210	XRF	2/16/97	2	Restroom	5	Wall	Midle Wall	Solid	Concrte	0

Saint Paul Public Schools
 Cherokee Heights Pagea Magnet School
 Lead-Based Paint Inspection

3	A	B	C	D	E	F	G	H	I	J	K	L
	Site	Sample #	Analysis	Date	Floor	Area	Room#	Component	Feature	Condition	Substrate	Result
254	1925 Bldg.	211	XRF	2/16/97	2	Restroom	5	Wall	Midle Wall	Solid	Concrte	0.01
255	1925 Bldg.	212	XRF	2/16/97	2	Restroom	5	Door	Door	Solid	Metal	0.01
256	1925 Bldg.	213	XRF	2/16/97	2	Restroom	5	Wall	Baseboar	Solid	Tile	0.15
257	1925 Bldg.	214	XRF	2/16/97	2	Restroom	5	Wall	Radiator	Solid	Metal	0
258	1925 Bldg.	215	XRF	2/16/97	2	Restroom	5	Wall	Bthrm Stil	Solid	Metal	0.97
259	1925 Bldg.	216	XRF	2/16/97	2	Restroom	6	Wall	Midle Wall	Solid	Concrte	0
260	1925 Bldg.	217	XRF	2/16/97	2	Restroom	6	Wall	Midle Wall	Solid	Concrte	0.02
261	1925 Bldg.	218	XRF	2/16/97	2	Restroom	6	Wall	Midle Wall	Solid	Concrte	0
262	1925 Bldg.	219	XRF	2/16/97	2	Restroom	6	Wall	Baseboar	Solid	Tile	0.1
263	1925 Bldg.	220	XRF	2/16/97	2	Restroom	6	Wall	Radiator	Solid	Metal	0
264	1925 Bldg.	221	XRF	2/16/97	2	Restroom	6	Wall	Bthrm Stil	Cracked		0.55
265	1925 Bldg.	51	XRF	2/15/97	1	Room	1	Wall	Wall	Cracked	Plaster	0.01
266	1925 Bldg.	52	XRF	2/15/97	1	Room	1	Wall	Midle Wall	Cracked	Plaster	0.32
267	1925 Bldg.	53	XRF	2/15/97	1	Room	1	Wall	Wall	Peeling	Plaster	0.1
268	1925 Bldg.	54	XRF	2/15/97	1	Room	1	Wall	Wall	Cracked	Plaster	0.13
269	1925 Bldg.	55	XRF	2/15/97	1	Room	1	Door	Crown mo	Cracked	Wood	0.13
270	1925 Bldg.	56	XRF	2/15/97	1	Room	1	Wall	Wall Rgstr	Solid	Metal	0.18
271	1925 Bldg.	57	XRF	2/15/97	1	Room	1	Cabinet	Door	Cracked	Wood	0.04
272	1925 Bldg.	58	XRF	2/15/97	1	Room	1	Cabinet	Inside	Solid	Wood	0
273	1925 Bldg.	59	XRF	2/15/97	1	Room	1	Cabinet	Door	Solid	Wood	0
274	1925 Bldg.	60	XRF	2/15/97	1	Room	1	Cabinet	Inside	Solid	Wood	0
275	1925 Bldg.	61	XRF	2/15/97	1	Room	1	Cabinet	Door	Solid	Wood	0.02
276	1925 Bldg.	62	XRF	2/15/97	1	Room	1	Bookcase	Shelf	Solid	Wood	0.09
277	1925 Bldg.	63	XRF	2/15/97	1	Room	1	Bulletin	Board	Solid	Wood	0.06
278	1925 Bldg.	64	XRF	2/15/97	1	Room	1	Bulletin	Board	Solid	Wood	0.1
279	1925 Bldg.	65	XRF	2/15/97	1	Room	1		Radiator	Cracked	Metal	0
280	1925 Bldg.	66	XRF	2/15/97	1	Room	1	Wall	Baseboar	Solid	Wood	0.07
281	1925 Bldg.	67	XRF	2/15/97	1	Room	1	Wall	Wall	Cracked	Plaster	0.14
282	1925 Bldg.	68	XRF	2/15/97	1	Room	1	Wall	Wall	Cracked	Concrte	0.04
283	1925 Bldg.	69	XRF	2/15/97	1	Room	1	Wall	Midle Wall	Cracked	Concrte	0.11
284	1925 Bldg.	70	XRF	2/15/97	1	Room	1	Door	Door	Cracked	Metal	1.02
285	1925 Bldg.	71	XRF	2/15/97	1	Room	1	Door	Casing	Cracked	Metal	0.88
286	1925 Bldg.	72	XRF	2/15/97	1	Room	1	Bulletin	Board	Cracked	Metal	5.09
287	1925 Bldg.	73	XRF	2/15/97	1	Room	1	Floor		Cracked	Concrte	0.03
288	1925 Bldg.	105	XRF	2/15/97	1	Room	3	Wall	Wall	Cracked	Plaster	3
289	1925 Bldg.	106	XRF	2/15/97	1	Room	3	Wall	Midle Wall	Cracked	Plaster	2.62
290	1925 Bldg.	107	XRF	2/15/97	1	Room	3	Wall	Midle Wall	Cracked	Plaster	0.15
291	1925 Bldg.	108	XRF	2/15/97	1	Room	3		Radiator	Solid	Metal	0.01
292	1925 Bldg.	109	XRF	2/15/97	1	Room	3	Wall	Baseboar	Cracked	Wood	0.02
293	1925 Bldg.	110	XRF	2/15/97	1	Room	3	Wall	Wall	Cracked	Plaster	0.2
294	1925 Bldg.	111	XRF	2/15/97	1	Room	3	Ceiling		Cracked	Plaster	0.18
295	1925 Bldg.	112	XRF	2/15/97	1	Room	3	Door	Crown mo	Cracked	Wood	0.03
296	1925 Bldg.	255	XRF	2/15/97	3	Room	4	Wall	Midle Wall	Peeling	Plaster	0.14
297	1925 Bldg.	256	XRF	2/15/97	3	Room	4	Wall	Midle Wall	Solid	Plaster	4.51
298	1925 Bldg.	257	XRF	2/15/97	3	Room	4	Door	Door	Solid	Wood	0.03
299	1925 Bldg.	258	XRF	2/15/97	3	Room	4	Door	Casing	Solid	Wood	0.04
300	1925 Bldg.	259	XRF	2/15/97	3	Room	4	Window	Casing	Solid	Wood	0.06
301	1925 Bldg.	260	XRF	2/15/97	3	Room	4		Radiator	Solid	Metal	0
302	1925 Bldg.	261	XRF	2/15/97	3	Room	4	Wall	Baseboar	Solid	Plaster	0.07
303	1925 Bldg.	262	XRF	2/15/97	3	Room	4	Cabinet	Door	Solid	Wood	0.03
304	1925 Bldg.	263	XRF	2/15/97	3	Room	4	Unlisted	Midle Wall	Cracked	Metal	2.47
305	1925 Bldg.	264	XRF	2/15/97	3	Room	4	Door	Crown mo	Solid	Wood	0.59
306	1925 Bldg.	265	XRF	2/15/97	3	Room	4	Unlisted		Solid	Metal	3.63
307	1925 Bldg.	266	XRF	2/15/97	3	Room	4	Ceiling		Peeling	Plaster	0.07
308	1925 Bldg.	323	XRF	2/15/97	3	Room	5	Wall	Wall	Cracked	Plaster	5.09
309	1925 Bldg.	324	XRF	2/15/97	3	Room	5	Wall	Wall	Cracked	Plaster	0.1
310	1925 Bldg.	325	XRF	2/15/97	3	Room	5	Wall	Wall	Cracked	Plaster	0.21
311	1925 Bldg.	326	XRF	2/15/97	3	Room	5	Ceiling		Cracked	Plaster	0.04
312	1925 Bldg.	327	XRF	2/15/97	3	Room	5	Door	Crown mo	Cracked	Wood	0.09
313	1925 Bldg.	328	XRF	2/15/97	3	Room	5	Wall	Wall Rgstr	Solid	Metal	0.01
314	1925 Bldg.	329	XRF	2/15/97	3	Room	5	Door	Door	Solid	Wood	0.03
315	1925 Bldg.	330	XRF	2/15/97	3	Room	5	Door	Casing	Cracked	Wood	0.04
316	1925 Bldg.	331	XRF	2/15/97	3	Room	5	Wall	Chair rail	Solid	Wood	0.04

Saint Paul Public Schools
Cherokee Heights Pagea Magnet School
Lead-Based Paint Inspection

	A	B	C	D	E	F	G	H	I	J	K	L
3	Site	Sample #	Analysis	Date	Floor	Area	Room#	Component	Feature	Condition	Substrate	Result
317	1925 Bldg.	332	XRF	2/15/97	3	Room	5	Window	Casing	Solid	Wood	0.05
318	1925 Bldg.	333	XRF	2/15/97	3	Room	5	Wall	Wall	Solid	Concrte	1.81
319	1925 Bldg.	334	XRF	2/15/97	3	Room	5		Radiator	Solid	Metal	0
320	1925 Bldg.	335	XRF	2/15/97	3	Room	5	Bulletin	Board	Solid	Wood	0.05
321	1925 Bldg.	336	XRF	2/15/97	3	Room	5	Wall	Baseboar	Solid	Wood	0.06
322	1925 Bldg.	337	XRF	2/15/97	3	Room	5	Cabinet	Door	Solid	Wood	0.01
323	1925 Bldg.	176	XRF	2/16/97	1	Room	11	Wall	Midle Wall	Solid	Concrte	0.01
324	1925 Bldg.	177	XRF	2/16/97	1	Room	11	Wall	Midle Wall	Solid	Concrte	0
325	1925 Bldg.	178	XRF	2/16/97	1	Room	11	Door	Casing	Solid	Metal	0.02
326	1925 Bldg.	179	XRF	2/16/97	1	Room	11	Door	Crown mo	Solid	Wood	0.01
327	1925 Bldg.	243	XRF	2/16/97	2	Room	12	Wall	Midle Wall	Solid	Metal	0
328	1925 Bldg.	244	XRF	2/16/97	2	Room	12	Bulletin Board		Solid	Wood	0
329	1925 Bldg.	245	XRF	2/16/97	2	Room	12	Wall	Wall Rgstr	Solid	Metal	0.01
330	1925 Bldg.	246	XRF	2/16/97	2	Room	12	Wire Tray		Solid	Metal	0.04
331	1925 Bldg.	247	XRF	2/16/97	2	Room	12	Wire Tray		Solid	Metal	0.02
332	1925 Bldg.	248	XRF	2/16/97	2	Room	12	Wall	Midle Wall	Solid	Plaster	0.01
333	1925 Bldg.	249	XRF	2/16/97	2	Room	12	Door	Jamb	Solid	Metal	0.01
334	1925 Bldg.	258	XRF	2/16/97	2	Room	13	Wall	Midle Wall	Solid	Metal	0
335	1925 Bldg.	259	XRF	2/16/97	2	Room	13	Wall	Wall Rgstr	Solid	Metal	0.01
336	1925 Bldg.	260	XRF	2/16/97	2	Room	13	Door	Jamb	Solid	Metal	0
337	1925 Bldg.	261	XRF	2/16/97	2	Room	13	Wall	Midle Wall	Solid	Metal	0.07
338	1925 Bldg.	262	XRF	2/16/97	2	Room	13	Wall	Midle Wall	Solid		0.01
339	1925 Bldg.	263	XRF	2/16/97	2	Room	13	Wall	Wall Rgstr	Solid	Metal	0
340	1925 Bldg.	264	XRF	2/16/97	2	Room	13	Door	Jamb	Solid	Metal	0
341	1925 Bldg.	74	XRF	2/15/97	1	Stairwell	1	Stairs	Hand rail	Cracked	Metal	2.18
342	1925 Bldg.	75	XRF	2/15/97	1	Stairwell	1	Stairs	Hand rail	Cracked	Concrte	0.01
343	1925 Bldg.	168	XRF	2/15/97	1	Stairwell	1	Wall	Wall	Solid	Plaster	3.09
344	1925 Bldg.	169	XRF	2/15/97	1	Stairwell	1	Wall	Wall	Cracked	Plaster	0.17
345	1925 Bldg.	170	XRF	2/15/97	1	Stairwell	1	Wall	Wall	Cracked	Plaster	0.1
346	1925 Bldg.	171	XRF	2/15/97	1	Stairwell	1	Wall	Wall	Cracked	Plaster	0.06
347	1925 Bldg.	172	XRF	2/15/97	1	Stairwell	1		Chair rail	Cracked	Wood	0.07
348	1925 Bldg.	173	XRF	2/15/97	1	Stairwell	1	Door	Door	Solid	Wood	0.05
349	1925 Bldg.	174	XRF	2/15/97	1	Stairwell	1	Door	Casing	Solid	Wood	0.06
350	1925 Bldg.	175	XRF	2/15/97	1	Stairwell	1	Ceiling		Solid	Plaster	0.12
351	1925 Bldg.	176	XRF	2/15/97	1	Stairwell	1	Stairs	Hand rail	Solid	Wood	0.06
352	1925 Bldg.	177	XRF	2/15/97	2	Stairwell	1	Wall	Radiator	Solid	Metal	0
353	1925 Bldg.	178	XRF	2/15/97	2	Stairwell	1	Window	Casing	Solid	Wood	0.06
354	1925 Bldg.	179	XRF	2/15/97	2	Stairwell	1	Door	Door	Solid	Wood	0
355	1925 Bldg.	180	XRF	2/15/97	2	Stairwell	1	Door	Casing	Solid	Metal	0.03
356	1925 Bldg.	181	XRF	2/15/97	2	Stairwell	1	Window	Casing	Solid	Metal	0.57
357	1925 Bldg.	182	XRF	2/15/97	2	Stairwell	1	Wall	Wall	Peeling	Plaster	3.5
358	1925 Bldg.	163	XRF	2/16/97	1	Stairwell	1	Wall	Midle Wall	Solid	Concrte	0.01
359	1925 Bldg.	164	XRF	2/16/97	1	Stairwell	1	Wall	Midle Wall	Solid		0.01
360	1925 Bldg.	165	XRF	2/16/97	1	Stairwell	1	Wall	Wall	Solid	Concrte	0.02
361	1925 Bldg.	166	XRF	2/16/97	1	Stairwell	1		Elec Pane	Solid	Metal	0.03
362	1925 Bldg.	167	XRF	2/16/97	1	Stairwell	1	Wall	Midle Wall	Solid	Concrte	0
363	1925 Bldg.	168	XRF	2/16/97	1	Stairwell	1	Wall	Midle Wall	Solid	Concrte	0
364	1925 Bldg.	169	XRF	2/16/97	1	Stairwell	1	Stairs	Baseboar	Solid	Tile	0.11
365	1925 Bldg.	170	XRF	2/16/97	1	Stairwell	1		Radiator	Solid	Metal	0.01
366	1925 Bldg.	171	XRF	2/16/97	1	Stairwell	1	Door	Casing	Solid	Metal	0.04
367	1925 Bldg.	172	XRF	2/16/97	1	Stairwell	1	Window	Casing	Solid	Metal	0.46
368	1925 Bldg.	173	XRF	2/16/97	1	Stairwell	1	Stairs	Hand rail	Solid	Wood	0.01
369	1925 Bldg.	174	XRF	2/16/97	1	Stairwell	1	Stairs	Baseboar	Cracked	Metal	0.05
370	1925 Bldg.	175	XRF	2/16/97	1	Stairwell	1	Stairs	Riser	Cracked	Metal	0.05
371	1971 Bldg.	30	XRF	2/17/97	1	Classroo	3	Wall	Wall	Solid	Concrte	0
372	1971 Bldg.	31	XRF	2/17/97	1	Classroo	3	Cabinet	Door	Solid	Metal	0.75
373	1971 Bldg.	32	XRF	2/17/97	1	Classroo	3	Closet	Casing	Solid	Metal	0.01
374	1971 Bldg.	33	XRF	2/17/97	1	Classroo	3	Closet	Wall	Solid	Concrte	0
375	1971 Bldg.	34	XRF	2/17/97	1	Classroo	3	Door	Casing	Cracked	Metal	0.02
376	1971 Bldg.	35	XRF	2/17/97	1	Classroo	3	Unlisted	Wall	Solid	Metal	0.02
377	1971 Bldg.	20	XRF	2/17/97	1	Classroo	4	Wall	Wall	Solid	Concrte	0.02
378	1971 Bldg.	21	XRF	2/17/97	1	Classroo	4	Wire Tray		Solid	Metal	0.02
379	1971 Bldg.	22	XRF	2/17/97	1	Classroo	4	Cabinet	Door	Solid	Metal	0.52

Saint Paul Public Schools
 Cherokee Heights Pagea Magnet School
 Lead-Based Paint Inspection

	A	B	C	D	E	F	G	H	I	J	K	L
3	Site	Sample #	Analysis	Date	Floor	Area	Room#	Component	Feature	Condition	Substrate	Result
380	1971 Bldg.	23	XRF	2/17/97	1	Classroom	4	Door	Casing	Cracked	Metal	0.08
381	1971 Bldg.	24	XRF	2/17/97	1	Classroom	4	Cover Plate		Solid	Metal	0
382	1971 Bldg.	25	XRF	2/17/97	1	Classroom	4	Wall	Baseboar	Solid	Tile	0.1
383	1971 Bldg.	7	XRF	2/17/97	1	Classroom	5	Wall	Midle Wall	Solid	Concrte	0
384	1971 Bldg.	8	XRF	2/17/97	1	Classroom	5	Wall	Wall	Solid	Concrte	0.05
385	1971 Bldg.	9	XRF	2/17/97	1	Classroom	5	Wall	Baseboar	Solid	Tile	0.38
386	1971 Bldg.	10	XRF	2/17/97	1	Classroom	5	Cabinet	Door	Solid	Metal	0.59
387	1971 Bldg.	11	XRF	2/17/97	1	Classroom	5	Wall	Radiator	Cracked	Metal	0.01
388	1971 Bldg.	12	XRF	2/17/97	1	Classroom	5	Closet	Casing	Solid	Metal	0.01
389	1971 Bldg.	13	XRF	2/17/97	1	Classroom	5	Closet	Wall	Solid	Concrte	0.04
390	1971 Bldg.	14	XRF	2/17/97	1	Classroom	5	Wall	Wall Rgstr	Solid	Metal	0.06
391	1971 Bldg.	15	XRF	2/17/97	1	Classroom	5	Door	Casing	Cracked	Metal	0.05
392	1971 Bldg.	17	XRF	2/17/97	1	Classroom	5	Wall	Midle Wall	Solid	Concrte	0.01
393	1971 Bldg.	18	XRF	2/17/97	1	Classroom	5	Wall	Baseboar	Solid	Tile	0.22
394	1971 Bldg.	19	XRF	2/17/97	1	Classroom	5	Door	Casing	Solid	Metal	0.01
395	1971 Bldg.	21	XRF	2/16/97	1	Classroom	103	Wall	Wall	Solid	Concrte	0.03
396	1971 Bldg.	22	XRF	2/16/97	1	Classroom	103	Wall	Wall	Solid	Concrte	0.01
397	1971 Bldg.	23	XRF	2/16/97	1	Classroom	103	Wall	Baseboar	Solid	Tile	0.23
398	1971 Bldg.	24	XRF	2/16/97	1	Classroom	103	Wall	Midle Wall	Solid	Wood	0
399	1971 Bldg.	25	XRF	2/16/97	1	Classroom	103	Wall	Wall Rgstr	Solid	Metal	0
400	1971 Bldg.	26	XRF	2/16/97	1	Classroom	103	Wall	Midle Wall	Solid	Plaster	0.04
401	1971 Bldg.	27	XRF	2/16/97	1	Classroom	103	Door	Header	Solid	Wood	0
402	1971 Bldg.	28	XRF	2/16/97	1	Classroom	103	Cabinet	Outside	Solid	Metal	0.46
403	1971 Bldg.	29	XRF	2/16/97	1	Classroom	103	Door	Casing	Cracked	Metal	0.02
404	1971 Bldg.	30	XRF	2/16/97	1	Classroom	104	Wall	Midle Wall	Solid	Concrte	0.02
405	1971 Bldg.	31	XRF	2/16/97	1	Classroom	104	Wall	Wall	Solid	Metal	0
406	1971 Bldg.	32	XRF	2/16/97	1	Classroom	104	Wall	Midle Wall	Cracked	Plaster	0.02
407	1971 Bldg.	33	XRF	2/16/97	1	Classroom	104	Wall	Midle Wall	Solid	Wood	0
408	1971 Bldg.	34	XRF	2/16/97	1	Classroom	104	Wall	Wall Rgstr	Solid	Metal	0
409	1971 Bldg.	35	XRF	2/16/97	1	Classroom	104	Door	Header	Solid	Wood	0
410	1971 Bldg.	36	XRF	2/16/97	1	Classroom	104	Cabinet	Door	Solid	Metal	0.56
411	1971 Bldg.	37	XRF	2/16/97	1	Classroom	104	Wall	Baseboar	Solid	Tile	0.27
412	1971 Bldg.	38	XRF	2/16/97	1	Classroom	104	Wall	Mural	Solid	Concrte	0.01
413	1971 Bldg.	39	XRF	2/16/97	1	Classroom	104	Door	Casing	Cracked	Metal	0.07
414	1971 Bldg.	40	XRF	2/16/97	1	Classroom	105	Wall	Wall	Solid	Metal	0
415	1971 Bldg.	41	XRF	2/16/97	1	Classroom	105	Wall	Midle Wall	Solid	Concrte	0
416	1971 Bldg.	42	XRF	2/16/97	1	Classroom	105	Wall	Wall	Solid	Concrte	0.07
417	1971 Bldg.	43	XRF	2/16/97	1	Classroom	105	Wall	Midle Wall	Solid	Wood	0
418	1971 Bldg.	44	XRF	2/16/97	1	Classroom	105	Wall	Midle Wall	Solid	Plaster	0.01
419	1971 Bldg.	45	XRF	2/16/97	1	Classroom	105	Wall	Wall Rgstr	Solid	Metal	0
420	1971 Bldg.	46	XRF	2/16/97	1	Classroom	105	Door	Header	Solid	Wood	0
421	1971 Bldg.	47	XRF	2/16/97	1	Classroom	105	Cabinet	Door	Solid	Metal	0.57
422	1971 Bldg.	48	XRF	2/16/97	1	Classroom	105	Wall	Baseboar	Solid	Tile	0.19
423	1971 Bldg.	49	XRF	2/16/97	1	Classroom	105	Door	Casing	Cracked	Metal	0.06
424	1971 Bldg.	50	XRF	2/16/97	1	Classroom	106	Wall	Wall	Solid	Concrte	0.02
425	1971 Bldg.	51	XRF	2/16/97	1	Classroom	106	Wall	Wall	Solid	Concrte	0
426	1971 Bldg.	52	XRF	2/16/97	1	Classroom	106	Wall	Radiator	Cracked	Metal	0
427	1971 Bldg.	53	XRF	2/16/97	1	Classroom	106	Wall	Radiator	Solid	Wood	0
428	1971 Bldg.	54	XRF	2/16/97	1	Classroom	106	Wall	Wall Rgstr	Solid	Metal	0
429	1971 Bldg.	55	XRF	2/16/97	1	Classroom	106	Wall	Baseboar	Solid	Tile	0.26
430	1971 Bldg.	56	XRF	2/16/97	1	Classroom	106	Door	Header	Solid	Wood	0
431	1971 Bldg.	57	XRF	2/16/97	1	Classroom	106	Cabinet	Inside	Solid	Metal	0.39
432	1971 Bldg.	58	XRF	2/16/97	1	Classroom	106	Door	Casing	Cracked	Metal	0.08
433	1971 Bldg.	59	XRF	2/16/97	1	Classroom	107	Wall	Wall	Solid	Concrte	0
434	1971 Bldg.	60	XRF	2/16/97	1	Classroom	107	Wall	Wall	Solid	Concrte	0
435	1971 Bldg.	61	XRF	2/16/97	1	Classroom	107	Wall	Baseboar	Solid	Tile	0.32
436	1971 Bldg.	62	XRF	2/16/97	1	Classroom	107	Wall	Midle Wall	Solid	Wood	0
437	1971 Bldg.	63	XRF	2/16/97	1	Classroom	107	Wall	Midle Wall	Solid	Plaster	0
438	1971 Bldg.	64	XRF	2/16/97	1	Classroom	107	Wall	Mural	Solid	Concrte	0
439	1971 Bldg.	65	XRF	2/16/97	1	Classroom	107	Cabinet	Door	Solid	Metal	0.42
440	1971 Bldg.	66	XRF	2/16/97	1	Classroom	107	Door	Header	Solid	Wood	0
441	1971 Bldg.	67	XRF	2/16/97	1	Classroom	107	Wall	Wall Rgstr	Solid	Metal	0
442	1971 Bldg.	68	XRF	2/16/97	1	Classroom	107	Door	Casing	Cracked	Metal	0

Saint Paul Public Schools
 Cherokee Heights Pagea Magnet School
 Lead-Based Paint Inspection

	A	B	C	D	E	F	G	H	I	J	K	L
3	Site	Sample #	Analysis	Date	Floor	Area	Room#	Component	Feature	Condition	Substrate	Result
443	1971 Bldg.	69	XRF	2/16/97	1	Classroo	108	Door	Casing	Solid	Wood	0
444	1971 Bldg.	70	XRF	2/16/97	1	Classroo	108	Door	Casing	Solid	Plaster	0.01
445	1971 Bldg.	71	XRF	2/16/97	1	Classroo	108	Wall	Midle Wall	Solid	Concrte	0.01
446	1971 Bldg.	72	XRF	2/16/97	1	Classroo	108	Wall	Wall	Solid	Concrte	0
447	1971 Bldg.	73	XRF	2/16/97	1	Classroo	108	Wall	Wall	Solid	Metal	0
448	1971 Bldg.	74	XRF	2/16/97	1	Classroo	108	Wall	Wall	Solid	Metal	0
449	1971 Bldg.	75	XRF	2/16/97	1	Classroo	108	Wall	Baseboar	Solid	Tile	0.25
450	1971 Bldg.	76	XRF	2/16/97	1	Classroo	108	Door	Casing	Cracked	Metal	0.05
451	1971 Bldg.	77	XRF	2/16/97	1	Classroo	108	Wall	Wall Rgstr	Solid	Metal	0
452	1971 Bldg.	78	XRF	2/16/97	1	Classroo	108	Door	Header	Solid	Wood	0.02
453	1971 Bldg.	79	XRF	2/16/97	1	Classroo	108	Cabinet	Shelf	Solid	Metal	0.39
454	1971 Bldg.	80	XRF	2/16/97	1	Classroo	108	Cabinet	Shelf	Solid		0.44
455	1971 Bldg.	81	XRF	2/16/97	1	Classroo	109	Wall	Wall	Solid	Metal	0
456	1971 Bldg.	82	XRF	2/16/97	1	Classroo	109	Wall	Wall	Solid	Metal	0.01
457	1971 Bldg.	83	XRF	2/16/97	1	Classroo	109	Wall	Midle Wall	Cracked	Plaster	0
458	1971 Bldg.	84	XRF	2/16/97	1	Classroo	109	Wall	Midle Wall	Solid	Concrte	0
459	1971 Bldg.	85	XRF	2/16/97	1	Classroo	109	Wall	Mural	Solid	Concrte	0
460	1971 Bldg.	86	XRF	2/16/97	1	Classroo	109	Cabinet	Door	Solid	Metal	0.56
461	1971 Bldg.	87	XRF	2/16/97	1	Classroo	109	Wall	Midle Wall	Solid	Wood	0
462	1971 Bldg.	88	XRF	2/16/97	1	Classroo	109	Door	Header	Solid	Wood	0
463	1971 Bldg.	89	XRF	2/16/97	1	Classroo	109	Door	Casing	Cracked	Metal	0.04
464	1971 Bldg.	90	XRF	2/16/97	1	Classroo	110	Wall	Midle Wall	Solid	Wood	0
465	1971 Bldg.	91	XRF	2/16/97	1	Classroo	110	Wall	Midle Wall	Solid	Plaster	0.01
466	1971 Bldg.	92	XRF	2/16/97	1	Classroo	110	Wall	Mural	Solid	Concrte	0.07
467	1971 Bldg.	93	XRF	2/16/97	1	Classroo	110	Wall	Mural	Solid	Concrte	0
468	1971 Bldg.	94	XRF	2/16/97	1	Classroo	110	Cabinet	Door	Solid	Metal	0.68
469	1971 Bldg.	95	XRF	2/16/97	1	Classroo	110	Wall	Wall	Solid	Concrte	0
470	1971 Bldg.	96	XRF	2/16/97	1	Classroo	110	Wall	Wall	Solid	Concrte	0.08
471	1971 Bldg.	97	XRF	2/16/97	1	Classroo	110	Door	Casing	Solid		0.07
472	1971 Bldg.	98	XRF	2/16/97	1	Classroo	110	Wall	Wall Rgstr	Solid	Metal	0.05
473	1971 Bldg.	137	XRF	2/16/97	1	Classroo	111	Wall	Midle Wall	Solid	Wood	0
474	1971 Bldg.	138	XRF	2/16/97	1	Classroo	111	Wall	Midle Wall	Solid	Plaster	0.07
475	1971 Bldg.	139	XRF	2/16/97	1	Classroo	111	Door	Header	Solid	Wood	0
476	1971 Bldg.	140	XRF	2/16/97	1	Classroo	111	Door	Mural	Solid	Concrte	0.01
477	1971 Bldg.	141	XRF	2/16/97	1	Classroo	111	Cabinet	Door	Solid	Metal	0.65
478	1971 Bldg.	142	XRF	2/16/97	1	Classroo	111	Wall	Wall	Solid	Concrte	0
479	1971 Bldg.	143	XRF	2/16/97	1	Classroo	111	Wall	Wall	Solid	Concrte	0
480	1971 Bldg.	144	XRF	2/16/97	1	Classroo	111	Door	Casing	Cracked	Metal	0.05
481	1971 Bldg.	145	XRF	2/16/97	1	Classroo	111	Wall	Wall Rgstr	Solid	Metal	0
482	1971 Bldg.	161	XRF	2/16/97	1	Classroo	111	Door	Door	Solid	Wood	0
483	1971 Bldg.	146	XRF	2/16/97	1	Classroo	112	Wall	Wall	Solid	Concrte	0
484	1971 Bldg.	147	XRF	2/16/97	1	Classroo	112	Wall	Baseboar	Solid	Tile	0.28
485	1971 Bldg.	148	XRF	2/16/97	1	Classroo	112	Wall	Mural	Solid	Concrte	0
486	1971 Bldg.	149	XRF	2/16/97	1	Classroo	112	Wall	Midle Wall	Solid	Wood	0
487	1971 Bldg.	150	XRF	2/16/97	1	Classroo	112	Door	Header	Solid	Wood	0
488	1971 Bldg.	151	XRF	2/16/97	1	Classroo	112	Wall	Wall	Solid	Plaster	0.08
489	1971 Bldg.	152	XRF	2/16/97	1	Classroo	112	Door	Casing	Solid	Metal	0.06
490	1971 Bldg.	153	XRF	2/16/97	1	Classroo	112	Door	Door	Cracked	Wood	0
491	1971 Bldg.	154	XRF	2/16/97	1	Classroo	113	Wall	Midle Wall	Solid	Concrte	0.03
492	1971 Bldg.	155	XRF	2/16/97	1	Classroo	113	Wall	Mural	Solid	Concrte	0
493	1971 Bldg.	156	XRF	2/16/97	1	Classroo	113	Cabinet	Door	Solid	Metal	0.71
494	1971 Bldg.	157	XRF	2/16/97	1	Classroo	113	Door	Casing	Cracked	Metal	0.02
495	1971 Bldg.	373	XRF	2/16/97	1	Classroo	114	Wall	Wall	Solid	Concrte	0
496	1971 Bldg.	374	XRF	2/16/97	1	Classroo	114	Wall	Mural	Solid	Concrte	0.01
497	1971 Bldg.	375	XRF	2/16/97	1	Classroo	114	Cabinet	Door	Solid	Metal	0.99
498	1971 Bldg.	376	XRF	2/16/97	1	Classroo	114	Wire Tray	Wall	Solid	Metal	0.02
499	1971 Bldg.	377	XRF	2/16/97	1	Classroo	114	Door	Crown mo	Solid	Wood	0.02
500	1971 Bldg.	378	XRF	2/16/97	1	Classroo	114	Door	Jamb	Solid	Metal	0.04
501	1971 Bldg.	141	XRF	2/17/97	1	Classroo	129	Wall	Wall	Solid	Concrte	0.03
502	1971 Bldg.	142	XRF	2/17/97	1	Classroo	129	Wall	Wall	Solid	Concrte	0
503	1971 Bldg.	143	XRF	2/17/97	1	Classroo	129	Cabinet	Door	Solid	Metal	0.55
504	1971 Bldg.	144	XRF	2/17/97	1	Classroo	129	Door	Casing	Cracked	Metal	0.03
505	1971 Bldg.	265	XRF	2/16/97	2	Classroo	204	Wall	Midle Wall	Solid	Wood	0

Saint Paul Public Schools
 Cherokee Heights Pagea Magnet School
 Lead-Based Paint Inspection

	A	B	C	D	E	F	G	H	I	J	K	L
3	Site	Sample #	Analysis	Date	Floor	Area	Room#	Component	Feature	Condition	Substrate	Result
506	1971 Bldg.	266	XRF	2/16/97	2	Classroo	204	Door	Header	Solid	Wood	0
507	1971 Bldg.	267	XRF	2/16/97	2	Classroo	204	Wall	Midle Wall	Solid	Concrte	0.08
508	1971 Bldg.	268	XRF	2/16/97	2	Classroo	204	Wall	Mural	Solid	Concrte	0.02
509	1971 Bldg.	269	XRF	2/16/97	2	Classroo	204	Wall	Wall	Solid	Metal	0
510	1971 Bldg.	270	XRF	2/16/97	2	Classroo	204	Wall	Wall	Solid	Plaster	0.01
511	1971 Bldg.	271	XRF	2/16/97	2	Classroo	204	Door	Jamb	Cracked	Metal	0.06
512	1971 Bldg.	272	XRF	2/16/97	2	Classroo	204	Door	Door	Cracked	Wood	0
513	1971 Bldg.	273	XRF	2/16/97	2	Classroo	204	Wall	Wall Rgstr	Solid	Metal	0
514	1971 Bldg.	274	XRF	2/16/97	2	Classroo	205	Wall	Wall	Solid	Metal	0
515	1971 Bldg.	275	XRF	2/16/97	2	Classroo	205	Wall	Midle Wall	Solid	Concrte	0.01
516	1971 Bldg.	276	XRF	2/16/97	2	Classroo	205	Wall	Midle Wall	Solid	Wood	0
517	1971 Bldg.	277	XRF	2/16/97	2	Classroo	205	Door	Header	Solid	Wood	0
518	1971 Bldg.	278	XRF	2/16/97	2	Classroo	205	Wall	Wall	Solid	Plaster	0.05
519	1971 Bldg.	279	XRF	2/16/97	2	Classroo	205	Wall	Wall Rgstr	Solid	Metal	0
520	1971 Bldg.	280	XRF	2/16/97	2	Classroo	205	Door	Casing	Cracked	Metal	0.01
521	1971 Bldg.	281	XRF	2/16/97	2	Classroo	205	Door	Door	Solid	Wood	0
522	1971 Bldg.	282	XRF	2/16/97	2	Classroo	206	Wall	Wall	Solid	Wood	0
523	1971 Bldg.	283	XRF	2/16/97	2	Classroo	206	Wall	Midle Wall	Solid	Concrte	0.01
524	1971 Bldg.	284	XRF	2/16/97	2	Classroo	206	Wall	Wall	Solid	Concrte	0
526	1971 Bldg.	285	XRF	2/16/97	2	Classroo	206	Cabinet	Door	Solid	Metal	0.37
526	1971 Bldg.	286	XRF	2/16/97	2	Classroo	206	Wall	Radiator	Cracked	Metal	0.01
527	1971 Bldg.	287	XRF	2/16/97	2	Classroo	206	Wall	Wall Rgstr	Cracked	Metal	0
528	1971 Bldg.	288	XRF	2/16/97	2	Classroo	206	Door	Jamb	Cracked	Metal	0.05
529	1971 Bldg.	289	XRF	2/16/97	2	Classroo	206	Door	Door	Solid	Wood	0
530	1971 Bldg.	290	XRF	2/16/97	2	Classroo	207	Wall	Wall	Solid	Concrte	0.01
531	1971 Bldg.	291	XRF	2/16/97	2	Classroo	207	Wall	Wall	Solid	Wood	0
532	1971 Bldg.	292	XRF	2/16/97	2	Classroo	207	Door	Header	Solid	Wood	0
533	1971 Bldg.	293	XRF	2/16/97	2	Classroo	207	Door	Casing	Cracked	Metal	0.06
534	1971 Bldg.	294	XRF	2/16/97	2	Classroo	207	Door	Door	Cracked	Wood	0
535	1971 Bldg.	295	XRF	2/16/97	2	Classroo	208	Wall	Wall	Solid	Wood	0
536	1971 Bldg.	296	XRF	2/16/97	2	Classroo	208	Door	Header	Solid	Wood	0
537	1971 Bldg.	297	XRF	2/16/97	2	Classroo	208	Wall	Midle Wall	Solid	Plaster	0
538	1971 Bldg.	298	XRF	2/16/97	2	Classroo	208	Wall	Midle Wall	Solid		0.01
539	1971 Bldg.	299	XRF	2/16/97	2	Classroo	208	Wall	Wall Rgstr	Solid	Metal	0.03
540	1971 Bldg.	300	XRF	2/16/97	2	Classroo	208	Wall	Midle Wall	Solid	Concrte	0
541	1971 Bldg.	301	XRF	2/16/97	2	Classroo	208	Wall	Wall	Solid	Concrte	0.01
542	1971 Bldg.	302	XRF	2/16/97	2	Classroo	208	Cabinet	Door	Solid	Metal	0.66
543	1971 Bldg.	303	XRF	2/16/97	2	Classroo	208	Wall	Baseboar	Solid	Tile	0.22
544	1971 Bldg.	304	XRF	2/16/97	2	Classroo	208	Wall	Wall	Solid	Metal	0
545	1971 Bldg.	305	XRF	2/16/97	2	Classroo	208	Door	Casing	Cracked	Metal	0.04
546	1971 Bldg.	306	XRF	2/16/97	2	Classroo	208	Door	Door	Solid	Wood	0
547	1971 Bldg.	307	XRF	2/16/97	2	Classroo	209	Wall	Wall	Solid	Metal	0
548	1971 Bldg.	308	XRF	2/16/97	2	Classroo	209	Wall	Midle Wall	Solid	Concrte	0.01
549	1971 Bldg.	309	XRF	2/16/97	2	Classroo	209	Wall	Wall	Solid	Concrte	0
550	1971 Bldg.	310	XRF	2/16/97	2	Classroo	209	Wall	Midle Wall	Solid	Wood	0
551	1971 Bldg.	311	XRF	2/16/97	2	Classroo	209	Door	Header	Solid	Wood	0.02
552	1971 Bldg.	312	XRF	2/16/97	2	Classroo	209	Wall	Wall	Solid	Plaster	0.1
553	1971 Bldg.	313	XRF	2/16/97	2	Classroo	209	Wall	Wall Rgstr	Solid	Metal	0.03
554	1971 Bldg.	314	XRF	2/16/97	2	Classroo	209	Door	Casing	Cracked	Metal	0.01
555	1971 Bldg.	315	XRF	2/16/97	2	Classroo	209	Door	Door	Solid	Wood	0.01
556	1971 Bldg.	316	XRF	2/16/97	2	Classroo	209	Door	Door	Solid	Wood	0
557	1971 Bldg.	317	XRF	2/16/97	2	Classroo	210	Wall	Midle Wall	Cracked	Plaster	0.01
558	1971 Bldg.	318	XRF	2/16/97	2	Classroo	210	Wall	Midle Wall	Solid	Wood	0
559	1971 Bldg.	319	XRF	2/16/97	2	Classroo	210	Door	Header	Solid	Wood	0
560	1971 Bldg.	320	XRF	2/16/97	2	Classroo	210	Wall	Wall Rgstr	Solid	Metal	0
561	1971 Bldg.	321	XRF	2/16/97	2	Classroo	210	Wall	Midle Wall	Solid	Concrte	0
562	1971 Bldg.	322	XRF	2/16/97	2	Classroo	210	Wall	Wall	Solid	Concrte	0.01
563	1971 Bldg.	323	XRF	2/16/97	2	Classroo	210	Cabinet	Door	Solid	Metal	0.76
564	1971 Bldg.	324	XRF	2/16/97	2	Classroo	210	Door	Casing	Cracked	Metal	0.06
565	1971 Bldg.	325	XRF	2/16/97	2	Classroo	210	Door	Door	Solid	Wood	0
566	1971 Bldg.	93	XRF	2/17/97	1	Gym	1	Wall	Wall	Solid	Concrte	0.01
567	1971 Bldg.	94	XRF	2/17/97	1	Gym	1	Wall	Wall	Solid	Concrte	0
568	1971 Bldg.	95	XRF	2/17/97	1	Gym	1	Wall	Wall	Solid	Concrte	0.04

Saint Paul Public Schools
 Cherokee Heights Pagea Magnet School
 Lead-Based Paint Inspection

3	A	B	C	D	E	F	G	H	I	J	K	L
Site	Sample #	Analysis	Date	Floor	Area	Room#	Component	Feature	Condition	Substrate	Result	
569	1971 Bldg.	96	XRF	2/17/97	1	Gym	1	Wall	Wall	Solid	Concrte	0
570	1971 Bldg.	97	XRF	2/17/97	1	Gym	1	Wall	Midle Wall	Solid	Concrte	0
571	1971 Bldg.	98	XRF	2/17/97	1	Gym	1	Wall	Midle Wall	Solid	Concrte	0.01
572	1971 Bldg.	99	XRF	2/17/97	1	Gym	1	Wall	Midle Wall	Solid	Concrte	0.03
573	1971 Bldg.	100	XRF	2/17/97	1	Gym	1	Wall	Midle Wall	Solid	Concrte	0.03
574	1971 Bldg.	101	XRF	2/17/97	1	Gym	1	Wall	Wall	Solid	Concrte	0.11
575	1971 Bldg.	102	XRF	2/17/97	1	Gym	1	Wall	Wall	Solid	Concrte	0.02
576	1971 Bldg.	103	XRF	2/17/97	1	Gym	1	Door	Header	Solid	Metal	0
577	1971 Bldg.	104	XRF	2/17/97	1	Gym	1	Wall	Wall Rgstr	Solid	Metal	0.01
578	1971 Bldg.	105	XRF	2/17/97	1	Gym	1	Door	Door	Solid	Wood	0.02
579	1971 Bldg.	106	XRF	2/17/97	1	Gym	1	Door	Casing	Cracked	Wood	0.04
580	1971 Bldg.	107	XRF	2/17/97	1	Gym	1	Door	Casing	Cracked	Metal	0.03
581	1971 Bldg.	108	XRF	2/17/97	1	Gym	1	Door	Backboar	Cracked	Metal	0.04
582	1971 Bldg.	109	XRF	2/17/97	1	Gym	1	Door	Transom	Cracked	Metal	0.06
583	1971 Bldg.	110	XRF	2/17/97	1	Gym	1	Door	Transom	Cracked		0.03
584	1971 Bldg.	138	XRF	2/15/97	1	Hall	1	Door	Door	Solid	Concrte	0
585	1971 Bldg.	139	XRF	2/15/97	1	Hall	1	Wall	Wall	Solid	Wood	0
586	1971 Bldg.	140	XRF	2/15/97	1	Hall	1	Door	Door	Solid	Wood	0.03
587	1971 Bldg.	141	XRF	2/15/97	1	Hall	1	Window	Casing	Solid	Metal	0.26
588	1971 Bldg.	142	XRF	2/15/97	1	Hall	1	Door	Casing	Solid	Metal	0.02
589	1971 Bldg.	143	XRF	2/15/97	1	Hall	1	Wall	Baseboar	Solid	Tile	0.19
590	1971 Bldg.	144	XRF	2/15/97	1	Hall	1		Radiator	Cracked	Metal	0.01
591	1971 Bldg.	145	XRF	2/15/97	1	Hall	1	Ceiling		Solid	Plaster	0.17
592	1971 Bldg.	146	XRF	2/15/97	1	Hall	1	Wall	Midle Wall	Solid	Concrte	0
593	1971 Bldg.	147	XRF	2/15/97	1	Hall	1	Wall	Wall	Solid	Concrte	0.01
594	1971 Bldg.	148	XRF	2/15/97	1	Hall	1	Door	Casing	Solid	Metal	0.02
595	1971 Bldg.	149	XRF	2/15/97	1	Hall	1		Radiator	Solid	Metal	0.01
596	1971 Bldg.	150	XRF	2/15/97	1	Hall	1	Wall	Baseboar	Solid	Tile	0.11
597	1971 Bldg.	156	XRF	2/15/97	1	Hall	2	Wall	Midle Wall	Solid	Concrte	0
598	1971 Bldg.	157	XRF	2/15/97	1	Hall	2	Door	Casing	Solid	Metal	0.02
599	1971 Bldg.	158	XRF	2/15/97	1	Hall	2	Wall	Baseboar	Solid	Tile	0.23
600	1971 Bldg.	13	XRF	2/16/97	1	Hall	3	Ceiling		Solid	Plaster	0
601	1971 Bldg.	14	XRF	2/16/97	1	Hall	3	Closet	Casing	Solid	Metal	0.03
602	1971 Bldg.	113	XRF	2/16/97	1	Hall	3	Door	Casing	Cracked	Metal	0.03
603	1971 Bldg.	114	XRF	2/16/97	1	Hall	3	Wall	Midle Wall	Solid	Concrte	0.01
604	1971 Bldg.	115	XRF	2/16/97	1	Hall	3	Wall	Midle Wall	Solid	Concrte	0.01
605	1971 Bldg.	116	XRF	2/16/97	1	Hall	3	Wall	Midle Wall	Solid	Concrte	0.02
606	1971 Bldg.	117	XRF	2/16/97	1	Hall	3	Wall	Midle Wall	Solid	Concrte	0.04
607	1971 Bldg.	118	XRF	2/16/97	1	Hall	3	Wall	Midle Wall	Solid	Concrte	0.01
608	1971 Bldg.	119	XRF	2/16/97	1	Hall	3	Wall	Wall	Solid	Concrte	0
609	1971 Bldg.	120	XRF	2/16/97	1	Hall	3	Wall	Baseboar	Solid	Tile	0.48
610	1971 Bldg.	121	XRF	2/16/97	1	Hall	3	Door	Casing	Cracked	Metal	0.07
611	1971 Bldg.	122	XRF	2/16/97	1	Hall	3	Door	Door	Cracked	Metal	0.1
612	1971 Bldg.	123	XRF	2/16/97	1	Hall	3	Wall	Wall Rgstr	Solid	Metal	0.26
613	1971 Bldg.	99	XRF	2/16/97	1	Hall	4	Wall	Midle Wall	Solid	Concrte	0.04
614	1971 Bldg.	100	XRF	2/16/97	1	Hall	4	Door	Casing	Solid	Metal	0.02
615	1971 Bldg.	101	XRF	2/16/97	1	Hall	4	Window	Casing	Cracked	Metal	0.38
616	1971 Bldg.	102	XRF	2/16/97	1	Hall	4	Wall	Midle Wall	Solid	Concrte	0
617	1971 Bldg.	103	XRF	2/16/97	1	Hall	4	Wall	Midle Wall	Solid	Concrte	0
618	1971 Bldg.	104	XRF	2/16/97	1	Hall	4	Wall	Midle Wall	Solid	Concrte	0.04
619	1971 Bldg.	105	XRF	2/16/97	1	Hall	4	Wall	Midle Wall	Solid	Concrte	0.03
620	1971 Bldg.	106	XRF	2/16/97	1	Hall	4	Door	Casing	Cracked	Metal	0.02
621	1971 Bldg.	107	XRF	2/16/97	1	Hall	4	Wall	Baseboar	Solid	Tile	0.59
622	1971 Bldg.	108	XRF	2/16/97	1	Hall	4	Wall	Wall Rgstr	Solid	Metal	0.16
623	1971 Bldg.	110	XRF	2/16/97	1	Hall	4	Wall	Wall Rgstr	Solid	Metal	0.23
624	1971 Bldg.	111	XRF	2/16/97	1	Hall	4		Elec Pane	Solid	Metal	0.03
625	1971 Bldg.	112	XRF	2/16/97	1	Hall	4	Wall	Midle Wall	Solid	Concrte	0.01
626	1971 Bldg.	124	XRF	2/16/97	1	Hall	5	Wall	Midle Wall	Solid	Concrte	0.02
627	1971 Bldg.	125	XRF	2/16/97	1	Hall	5		Elec Pane	Solid	Metal	0
628	1971 Bldg.	126	XRF	2/16/97	1	Hall	5	Wall	Baseboar	Solid	Tile	0.24
629	1971 Bldg.	127	XRF	2/16/97	1	Hall	5	Wall	Midle Wall	Solid	Concrte	0.05
630	1971 Bldg.	128	XRF	2/16/97	1	Hall	5	Wall	Wall	Solid	Concrte	0.01
631	1971 Bldg.	129	XRF	2/16/97	1	Hall	5	Wall	Midle Wall	Solid	Concrte	0.02

Saint Paul Public Schools
 Cherokee Heights Pagea Magnet School
 Lead-Based Paint Inspection

3	A	B	C	D	E	F	G	H	I	J	K	L
Site	Sample #	Analysis	Date	Floor	Area	Room#	Component	Feature	Condition	Substrate	Result	
632	1971 Bldg.	130	XRF	2/16/97	1	Hall	5	Wall	Middle Wall	Solid	Concrte	0.01
633	1971 Bldg.	131	XRF	2/16/97	1	Hall	5	Wall	Middle Wall	Solid	Concrte	0
634	1971 Bldg.	132	XRF	2/16/97	1	Hall	5	Door	Casing	Solid	Metal	0.02
635	1971 Bldg.	133	XRF	2/16/97	1	Hall	5	Window	Casing	Cracked	Metal	0.34
636	1971 Bldg.	134	XRF	2/16/97	1	Hall	5		Radiator	Solid	Metal	0
637	1971 Bldg.	135	XRF	2/16/97	1	Hall	5	Wall	Wall	Solid	Wood	0
638	1971 Bldg.	136	XRF	2/16/97	1	Hall	5	Wall	Wall Rgstr	Solid	Metal	0.22
639	1971 Bldg.	326	XRF	2/16/97	2	Hall	8	Wall	Middle Wall	Solid	Concrte	0
640	1971 Bldg.	327	XRF	2/16/97	2	Hall	8	Door	Casing	Solid	Metal	0.02
641	1971 Bldg.	328	XRF	2/16/97	2	Hall	8	Door	Door	Solid	Wood	0
642	1971 Bldg.	329	XRF	2/16/97	2	Hall	8	Window	Casing	Cracked	Metal	0.38
643	1971 Bldg.	330	XRF	2/16/97	2	Hall	8	Coat Rack		Solid	Wood	0
644	1971 Bldg.	331	XRF	2/16/97	2	Hall	8	Wall	Middle Wall	Solid	Concrte	0
645	1971 Bldg.	332	XRF	2/16/97	2	Hall	8	Wall	Middle Wall	Solid	Concrte	0.03
646	1971 Bldg.	333	XRF	2/16/97	2	Hall	8	Wall	Radiator	Solid	Metal	0
647	1971 Bldg.	334	XRF	2/16/97	2	Hall	8	Wall	Middle Wall	Solid	Concrte	0
648	1971 Bldg.	335	XRF	2/16/97	2	Hall	8	Wall	Wall Rgstr	Solid	Metal	0.12
649	1971 Bldg.	145	XRF	2/17/97	1	Hall	9	Wall	Middle Wall	Solid	Concrte	0.01
650	1971 Bldg.	146	XRF	2/17/97	1	Hall	9	Door	Door	Solid	Wood	0
651	1971 Bldg.	147	XRF	2/17/97	1	Hall	9	Door	Casing	Solid	Metal	0.05
652	1971 Bldg.	148	XRF	2/17/97	1	Hall	9	Window	Casing	Cracked	Metal	0.45
653	1971 Bldg.	149	XRF	2/17/97	1	Hall	9	Wall	Wall	Solid	Concrte	0.01
654	1971 Bldg.	150	XRF	2/17/97	1	Hall	9	Wall	Wall	Solid	Concrte	0.04
655	1971 Bldg.	151	XRF	2/17/97	1	Hall	9		Elec Pane	Solid	Metal	0.02
656	1971 Bldg.	152	XRF	2/17/97	1	Hall	9	Wall	Wall Rgstr	Solid	Metal	0.01
657	1971 Bldg.	153	XRF	2/17/97	1	Hall	9	Wall	Wall	Solid	Concrte	0
658	1971 Bldg.	154	XRF	2/17/97	1	Hall	9	Wall	Middle Wall	Solid	Concrte	0.04
659	1971 Bldg.	155	XRF	2/17/97	1	Hall	10	Wall	Middle Wall	Solid	Concrte	0
660	1971 Bldg.	156	XRF	2/17/97	1	Hall	10	Door	Door	Solid	Wood	0.01
661	1971 Bldg.	157	XRF	2/17/97	1	Hall	10	Door	Casing	Solid	Metal	0.01
662	1971 Bldg.	158	XRF	2/17/97	1	Hall	10	Window	Casing	Solid	Metal	0.24
663	1971 Bldg.	159	XRF	2/17/97	1	Hall	10	Wall	Middle Wall	Solid	Concrte	0.01
664	1971 Bldg.	160	XRF	2/17/97	1	Hall	10	Wall	Wall	Solid	Concrte	0
665	1971 Bldg.	161	XRF	2/17/97	1	Hall	10	Wall	Middle Wall	Solid	Concrte	0
666	1971 Bldg.	162	XRF	2/17/97	1	Hall	10		Radiator	Cracked	Metal	0
667	1971 Bldg.	163	XRF	2/17/97	1	Hall	10	Door	Casing	Cracked	Metal	0.08
668	1971 Bldg.	164	XRF	2/17/97	1	Hall	10	Door	Jamb	Cracked	Metal	0.03
669	1971 Bldg.	165	XRF	2/17/97	1	Hall	10	Door	Door	Cracked	Metal	0.13
670	1971 Bldg.	166	XRF	2/17/97	1	Hall	10	Wall	Wall Rgstr	Cracked	Metal	0
671	1971 Bldg.	167	XRF	2/17/97	1	Hall	11	Wall	Wall	Solid	Concrte	0.01
672	1971 Bldg.	168	XRF	2/17/97	1	Hall	11	Wall	Wall	Solid	Concrte	0
673	1971 Bldg.	169	XRF	2/17/97	1	Hall	11	Wall	Middle Wall	Solid	Concrte	0.02
674	1971 Bldg.	170	XRF	2/17/97	1	Hall	11	Wall	Middle Wall	Solid	Concrte	0
675	1971 Bldg.	171	XRF	2/17/97	1	Hall	11	Door	Casing	Solid	Metal	0.02
676	1971 Bldg.	172	XRF	2/17/97	1	Hall	11	Wall	Middle Wall	Solid	Concrte	0.01
677	1971 Bldg.	173	XRF	2/17/97	1	Hall	11	Door	Door	Cracked	Metal	0.62
678	1971 Bldg.	174	XRF	2/17/97	1	Hall	11	Door	Casing	Cracked	Metal	0.21
679	1971 Bldg.	175	XRF	2/17/97	1	Hall	11	Door	Door	Solid	Wood	0
680	1971 Bldg.	176	XRF	2/17/97	1	Hall	11	Door	Jamb	Cracked	Metal	0.01
681	1971 Bldg.	177	XRF	2/17/97	1	Hall	11	Wall	Wall	Solid	Wood	0
682	1971 Bldg.	178	XRF	2/17/97	1	Hall	11	Closet	Casing	Solid	Metal	0.02
683	1971 Bldg.	179	XRF	2/17/97	1	Hall	11	Closet	Wall	Solid	Concrte	0
684	1971 Bldg.	180	XRF	2/17/97	1	Hall	11	Ceiling		Solid	Drywall	0.02
685	1971 Bldg.	181	XRF	2/17/97	1	Hall	11	Wall	Middle Wall	Solid	Concrte	0.03
686	1971 Bldg.	190	XRF	2/17/97	1	Hall	11	Closet	Wall	Solid	Concrte	0
687	1971 Bldg.	191	XRF	2/17/97	1	Hall	11	Door	Casing	Solid	Metal	0.03
688	1971 Bldg.	192	XRF	2/17/97	1	Hall	11	Wall	Wall	Solid	Concrte	0
689	1971 Bldg.	193	XRF	2/17/97	1	Hall	11		Radiator	Solid	Metal	0
690	1971 Bldg.	194	XRF	2/17/97	1	Hall	11	Wall	Baseboar	Solid	Tile	0.11
691	1971 Bldg.	195	XRF	2/17/97	1	Hall	11	Wall	Wall	Solid	Concrte	0
692	1971 Bldg.	196	XRF	2/17/97	1	Hall	11	Door	Casing	Solid	Metal	0.06
693	1971 Bldg.	197	XRF	2/17/97	1	Hall	11	Door	Bthrm Still	Cracked	Metal	0.01
694	1971 Bldg.	133	XRF	2/17/97	1	Kitchen	1	Wall	Middle Wall	Solid	Concrte	0

Saint Paul Public Schools
Cherokee Heights Pagea Magnet School
Lead-Based Paint Inspection

3	A	B	C	D	E	F	G	H	I	J	K	L
Site	Sample #	Analysis	Date	Floor	Area	Room#	Component	Feature	Condition	Substrate	Result	
695	1971 Bldg.	134	XRF	2/17/97	1	Kitchen	1	Wall	Wall	Solid	Metal	0.03
696	1971 Bldg.	135	XRF	2/17/97	1	Kitchen	1	Wall	Wall	Solid	Concrcte	1.22
697	1971 Bldg.	136	XRF	2/17/97	1	Kitchen	1		Radiator	Solid	Metal	0.05
698	1971 Bldg.	137	XRF	2/17/97	1	Kitchen	1	Door	Casing	Cracked	Metal	0.02
699	1971 Bldg.	138	XRF	2/17/97	1	Kitchen	1	Window	Casing	Solid	Metal	0.03
700	1971 Bldg.	139	XRF	2/17/97	1	Kitchen	1	Wall	Midle Wall	Solid	Metal	0.05
701	1971 Bldg.	140	XRF	2/17/97	1	Kitchen	1		Elec Pane	Solid	Metal	0.04
702	1971 Bldg.	341	XRF	2/17/97	1	Outside	0	Door	Door	Solid	Metal	0.06
703	1971 Bldg.	342	XRF	2/17/97	1	Outside	0	Door	Door	Solid	Metal	0.04
704	1971 Bldg.	344	XRF	2/17/97	1	Outside	0	Ext Wall	Trim	Cracked	Metal	0.07
705	1971 Bldg.	347	XRF	2/17/97	3	Outside	0	Ext Wall	Trim	Cracked	Metal	0.07
706	1971 Bldg.	348	XRF	2/17/97	3	Outside	0	Ext Wall	Trim	Solid	Plaster	0
707	1971 Bldg.	349	XRF	2/17/97	3	Outside	0	Door	Door	Solid	Wood	0
708	1971 Bldg.	350	XRF	2/17/97	3	Outside	0	Door	Door	Cracked	Metal	0.06
709	1971 Bldg.	351	XRF	2/17/97	3	Outside	0	Door	Jamb	Cracked	Metal	0.04
710	1971 Bldg.	352	XRF	2/17/97	3	Outside	0	Ceiling	Hatch	Solid	Metal	0
711	1971 Bldg.	353	XRF	2/17/97	3	Outside	0	Wall	Wall Rgstr	Solid	Metal	0.01
712	1971 Bldg.	354	XRF	2/17/97	3	Outside	0	Door	Door	Solid	Metal	0.97
713	1971 Bldg.	355	XRF	2/17/97	3	Outside	0	Door	Casing	Solid	Metal	0.01
714	1971 Bldg.	152	XRF	2/15/97	1	Restroom	1	Wall	Midle Wall	Solid	Concrcte	0.05
715	1971 Bldg.	153	XRF	2/15/97	1	Restroom	1	Wall	Baseboar	Solid	Tile	0.16
716	1971 Bldg.	154	XRF	2/15/97	1	Restroom	1	Door	Casing	Solid	Metal	0.02
717	1971 Bldg.	165	XRF	2/15/97	1	Restroom	2	Wall	Midle Wall	Solid	Concrcte	0.01
718	1971 Bldg.	166	XRF	2/15/97	1	Restroom	2	Wall	Baseboar	Solid	Tile	0.11
719	1971 Bldg.	167	XRF	2/15/97	1	Restroom	2	Door	Casing	Solid	Metal	0.02
720	1971 Bldg.	6	XRF	2/16/97	1	Restroom	3	Wall	Midle Wall	Solid	Concrcte	0.01
721	1971 Bldg.	7	XRF	2/16/97	1	Restroom	3	Wall	Midle Wall	Solid	Concrcte	0
722	1971 Bldg.	8	XRF	2/16/97	1	Restroom	3	Wall	Midle Wall	Solid	Concrcte	0.01
723	1971 Bldg.	9	XRF	2/16/97	1	Restroom	3	Door	Door	Solid	Metal	0
724	1971 Bldg.	10	XRF	2/16/97	1	Restroom	3	Wall	Baseboar	Solid	Tile	0.22
725	1971 Bldg.	11	XRF	2/16/97	1	Restroom	3		Radiator	Solid	Metal	0
726	1971 Bldg.	12	XRF	2/16/97	1	Restroom	3	Wall	Bthrm Still	Solid	Metal	0
727	1971 Bldg.	15	XRF	2/16/97	1	Restroom	4	Wall	Midle Wall	Solid	Concrcte	0.1
728	1971 Bldg.	16	XRF	2/16/97	1	Restroom	4	Closet	Casing	Solid	Concrcte	0
729	1971 Bldg.	17	XRF	2/16/97	1	Restroom	4	Wall	Midle Wall	Solid	Concrcte	0.03
730	1971 Bldg.	18	XRF	2/16/97	1	Restroom	4		Radiator	Solid	Metal	0
731	1971 Bldg.	19	XRF	2/16/97	1	Restroom	4	Wall	Baseboar	Solid	Tile	0.25
732	1971 Bldg.	20	XRF	2/16/97	1	Restroom	4	Wall	Bthrm Still	Solid	Metal	0.08
733	1971 Bldg.	16	XRF	2/17/97	1	Restroom	7	Wall	Midle Wall	Solid	Concrcte	0
734	1971 Bldg.	26	XRF	2/17/97	1	Restroom	8	Wall	Midle Wall	Solid	Concrcte	0
735	1971 Bldg.	27	XRF	2/17/97	1	Restroom	8	Wall	Baseboar	Solid	Tile	0.29
736	1971 Bldg.	28	XRF	2/17/97	1	Restroom	8	Door	Casing	Solid	Metal	0
737	1971 Bldg.	29	XRF	2/17/97	1	Restroom	8	Door	Door	Solid	Wood	0.02
738	1971 Bldg.	36	XRF	2/17/97	1	Restroom	9	Wall	Wall	Solid	Concrcte	0
739	1971 Bldg.	37	XRF	2/17/97	1	Restroom	9	Wall	Baseboar	Solid	Tile	0.16
740	1971 Bldg.	38	XRF	2/17/97	1	Restroom	9	Wall	Midle Wall	Solid	Concrcte	0.01
741	1971 Bldg.	39	XRF	2/17/97	1	Restroom	9	Door	Casing	Cracked	Metal	0.02
742	1971 Bldg.	69	XRF	2/17/97	1	Restroom	10	Wall	Wall	Solid	Concrcte	0
743	1971 Bldg.	70	XRF	2/17/97	1	Restroom	11	Wall	Wall	Cracked	Concrcte	0
744	1971 Bldg.	71	XRF	2/17/97	1	Restroom	11	Door	Casing	Cracked	Metal	0.15
745	1971 Bldg.	72	XRF	2/17/97	1	Restroom	11	Door	Door	Solid	Wood	0
746	1971 Bldg.	73	XRF	2/17/97	1	Restroom	11	Ceiling		Solid	Plaster	0.02
747	1971 Bldg.	74	XRF	2/17/97	1	Restroom	11	Wall	Wall	Solid	Concrcte	0
748	1971 Bldg.	75	XRF	2/17/97	1	Restroom	11		Locker	Cracked	Metal	0.02
749	1971 Bldg.	76	XRF	2/17/97	1	Restroom	11		Bthrm Still	Cracked	Metal	0.05
750	1971 Bldg.	77	XRF	2/17/97	1	Restroom	11		Stall Door	Cracked	Wood	0.22
751	1971 Bldg.	78	XRF	2/17/97	1	Restroom	11	Bench		Cracked	Wood	0
752	1971 Bldg.	79	XRF	2/17/97	1	Restroom	11		Radiator	Cracked	Metal	0.01
753	1971 Bldg.	80	XRF	2/17/97	1	Restroom	11	Wall	Baseboar	Solid	Tile	0.12
754	1971 Bldg.	82	XRF	2/17/97	1	Restroom	12	Wall	Midle Wall	Solid	Concrcte	0
755	1971 Bldg.	83	XRF	2/17/97	1	Restroom	12	Door	Door	Solid	Wood	0
756	1971 Bldg.	84	XRF	2/17/97	1	Restroom	12	Door	Casing	Cracked	Metal	0.35
757	1971 Bldg.	85	XRF	2/17/97	1	Restroom	12	Ceiling		Solid	Plaster	0

Saint Paul Public Schools
 Cherokee Heights Pagea Magnet School
 Lead-Based Paint Inspection

3	A	B	C	D	E	F	G	H	I	J	K	L
Site	Sample #	Analysis	Date	Floor	Area	Room#	Component	Feature	Condition	Substrate	Result	
758	1971 Bldg.	86	XRF	2/17/97	1	Restroom	12	Wall	Baseboar	Solid	Tile	0.18
759	1971 Bldg.	87	XRF	2/17/97	1	Restroom	12	Wall	Wall	Solid	Concrte	0.17
760	1971 Bldg.	88	XRF	2/17/97	1	Restroom	12		Locker	Solid	Metal	0.28
761	1971 Bldg.	89	XRF	2/17/97	1	Restroom	12		Bthrm Stil	Cracked	Metal	0.09
762	1971 Bldg.	90	XRF	2/17/97	1	Restroom	12	Bench		Cracked	Wood	0
763	1971 Bldg.	91	XRF	2/17/97	1	Restroom	12	Bench		Solid	Wood	0
764	1971 Bldg.	92	XRF	2/17/97	1	Restroom	12		Radlator	Cracked	Metal	0.01
765	1971 Bldg.	123	XRF	2/17/97	1	Restroom	13	Wall	Wall	Solid	Concrte	0.02
766	1971 Bldg.	124	XRF	2/17/97	1	Restroom	13	Door	Door	Solid	Metal	0.02
767	1971 Bldg.	125	XRF	2/17/97	1	Restroom	13	Door	Casing	Solid	Metal	0.02
768	1971 Bldg.	126	XRF	2/17/97	1	Restroom	13		Radlator	Solid	Metal	0.09
769	1971 Bldg.	127	XRF	2/17/97	1	Restroom	13		Bthrm Stil	Solid	Metal	0.06
770	1971 Bldg.	128	XRF	2/17/97	1	Restroom	13		Locker	Solid	Metal	0.02
771	1971 Bldg.	186	XRF	2/17/97	1	Restroom	14	Wall	Midle Wall	Solid	Concrte	0
772	1971 Bldg.	187	XRF	2/17/97	1	Restroom	14	Wall	Wall	Solid	Concrte	0
773	1971 Bldg.	188	XRF	2/17/97	1	Restroom	14	Door	Casing	Cracked	Metal	0.02
774	1971 Bldg.	189	XRF	2/17/97	1	Restroom	14		Bthrm Stil	Cracked	Metal	0.05
775	1971 Bldg.	77	XRF	2/15/97	1	Room	1	Door	Door	Cracked		0.03
776	1971 Bldg.	78	XRF	2/15/97	1	Room	1	Door	Casing	Cracked	Metal	0.02
777	1971 Bldg.	79	XRF	2/15/97	1	Room	1	Door	Header	Solid	Metal	0.04
778	1971 Bldg.	80	XRF	2/15/97	1	Room	2	Wall	Midle Wall	Solid	Concrte	0.05
779	1971 Bldg.	81	XRF	2/15/97	1	Room	2	Door	Door	Solid	Wood	0
780	1971 Bldg.	82	XRF	2/15/97	1	Room	2	Door	Casing	Solid	Metal	0
781	1971 Bldg.	83	XRF	2/15/97	1	Room	2	Door	Header	Solid	Metal	0
782	1971 Bldg.	84	XRF	2/15/97	1	Room	2	Door	Door	Cracked	Metal	0.04
783	1971 Bldg.	85	XRF	2/15/97	1	Room	2	Door	Casing	Cracked	Metal	0.03
784	1971 Bldg.	86	XRF	2/15/97	1	Room	2		Radiator	Solid	Metal	0
785	1971 Bldg.	113	XRF	2/15/97	1	Room	3	Wall	Midle Wall	Solid	Concrte	0.03
786	1971 Bldg.	114	XRF	2/15/97	1	Room	3	Wall	Midle Wall	Solid	Concrte	0
787	1971 Bldg.	115	XRF	2/15/97	1	Room	3	Door	Door	Solid	Wood	0.08
788	1971 Bldg.	116	XRF	2/15/97	1	Room	3	Window	Casing	Solid	Metal	0.36
789	1971 Bldg.	117	XRF	2/15/97	1	Room	3	Door	Casing	Solid	Metal	0.03
790	1971 Bldg.	118	XRF	2/15/97	1	Room	3	Wall	Baseboar	Solid	Tile	0.1
791	1971 Bldg.	119	XRF	2/15/97	1	Room	3	Cabinet	Outside	Solid	Wood	0
792	1971 Bldg.	120	XRF	2/15/97	1	Room	4	Wall	Midle Wall	Solid	Concrte	0.06
793	1971 Bldg.	121	XRF	2/15/97	1	Room	4	Wall	Wall	Solid	Concrte	0.03
794	1971 Bldg.	122	XRF	2/15/97	1	Room	4	Door	Casing	Solid	Metal	0.01
795	1971 Bldg.	123	XRF	2/15/97	1	Room	4	Window	Casing	Solid	Metal	0.04
796	1971 Bldg.	124	XRF	2/15/97	1	Room	4	Wall	Baseboar	Solid	Tile	0.18
797	1971 Bldg.	125	XRF	2/15/97	1	Room	4	Cabinet	Outside	Solid	Wood	0.06
798	1971 Bldg.	126	XRF	2/15/97	1	Room	4	Cabinet	Elec Pane	Solid	Metal	0.02
799	1971 Bldg.	127	XRF	2/15/97	1	Room	5	Wall	Midle Wall	Solid	Concrte	0.01
800	1971 Bldg.	128	XRF	2/15/97	1	Room	5	Wall	Wall	Solid	Concrte	0
801	1971 Bldg.	129	XRF	2/15/97	1	Room	5	Wall	Wall	Solid		0
802	1971 Bldg.	130	XRF	2/15/97	1	Room	5	Door	Casing	Solid	Metal	0.02
803	1971 Bldg.	131	XRF	2/15/97	1	Room	5	Closet	Wall	Solid	Concrte	0.01
804	1971 Bldg.	132	XRF	2/15/97	1	Room	5	Wall	Baseboar	Solid	Tile	0.16
805	1971 Bldg.	133	XRF	2/15/97	1	Room	6	Wall	Midle Wall	Solid	Concrte	0
806	1971 Bldg.	134	XRF	2/15/97	1	Room	6	Wall	Wall	Solid	Concrte	0
807	1971 Bldg.	135	XRF	2/15/97	1	Room	6	Door	Casing	Solid	Metal	0.04
808	1971 Bldg.	136	XRF	2/15/97	1	Room	6	Closet	Wall	Solid	Concrte	0.01
809	1971 Bldg.	137	XRF	2/15/97	1	Room	6	Wall	Baseboar	Solid	Tile	0.16
810	1971 Bldg.	155	XRF	2/15/97	1	Room	7	Wall	Diffuser	Cracked	Metal	0.03
811	1971 Bldg.	159	XRF	2/15/97	1	Room	8	Wall	Midle Wall	Solid	Concrte	0.05
812	1971 Bldg.	160	XRF	2/15/97	1	Room	8	Wall	Wall	Solid	Concrte	0.06
813	1971 Bldg.	161	XRF	2/15/97	1	Room	8		Radiator	Solid	Metal	0.01
814	1971 Bldg.	162	XRF	2/15/97	1	Room	8	Bookcase	Shelf	Solid	Wood	0
815	1971 Bldg.	163	XRF	2/15/97	1	Room	8	Wall	Baseboar	Solid	Tile	0.12
816	1971 Bldg.	164	XRF	2/15/97	1	Room	8	Wall	Diffuser	Solid	Metal	0
817	1971 Bldg.	158	XRF	2/16/97	1	Room	9	Wall	Midle Wall	Cracked	Concrte	0
818	1971 Bldg.	159	XRF	2/16/97	1	Room	10	Wall	Midle Wall	Solid		0
819	1971 Bldg.	160	XRF	2/16/97	1	Room	10	Door	Casing	Solid	Metal	0.02
820	1971 Bldg.	367	XRF	2/16/97	2	Room	15	Wall	Midle Wall	Solid	Concrte	0

Saint Paul Public Schools
 Cherokee Heights Pagea Magnet School
 Lead-Based Paint Inspection

3	A	B	C	D	E	F	G	H	I	J	K	L
Site	Sample #	Analysis	Date	Floor	Area	Room#	Component	Feature	Condition	Substrate	Result	
821	1971 Bldg.	368	XRF	2/16/97	2	Room	15	Wall	Middle Wall	Solid	Concrte	0
822	1971 Bldg.	369	XRF	2/16/97	2	Room	15	Wire Tray		Solid	Metal	0.02
823	1971 Bldg.	370	XRF	2/16/97	2	Room	15	Window	Casing	Solid	Metal	0.01
824	1971 Bldg.	371	XRF	2/16/97	1	Room	15	Window	Casing	Solid		0.02
825	1971 Bldg.	372	XRF	2/16/97	1	Room	15	Door	Casing	Solid	Metal	0.03
826	1971 Bldg.	40	XRF	2/17/97	1	Room	16	Wall	Middle Wall	Solid	Concrte	0
827	1971 Bldg.	41	XRF	2/17/97	1	Room	16	Wall	Wall	Solid	Concrte	0.05
828	1971 Bldg.	42	XRF	2/17/97	1	Room	16	Door	Casing	Cracked	Metal	0.01
829	1971 Bldg.	43	XRF	2/17/97	1	Room	16	Door	Door	Solid	Wood	0
830	1971 Bldg.	44	XRF	2/17/97	1	Room	17	Wall	Middle Wall	Solid	Metal	0.13
831	1971 Bldg.	45	XRF	2/17/97	1	Room	17	Ceiling		Solid	Metal	0.02
832	1971 Bldg.	46	XRF	2/17/97	1	Room	18	Wall	Middle Wall	Solid	Concrte	0.01
833	1971 Bldg.	47	XRF	2/17/97	1	Room	18	Ceiling		Solid	Plaster	0
834	1971 Bldg.	48	XRF	2/17/97	1	Room	18	Ceiling	Diffuser	Solid	Metal	0
835	1971 Bldg.	49	XRF	2/17/97	1	Room	18	Mounting Board		Solid	Wood	0
836	1971 Bldg.	50	XRF	2/17/97	1	Room	18	Ceiling	Hatch	Cracked	Metal	0
837	1971 Bldg.	51	XRF	2/17/97	1	Room	18	Door	Door	Solid	Metal	0.02
838	1971 Bldg.	52	XRF	2/17/97	1	Room	18	Door	Casing	Cracked	Metal	0.03
839	1971 Bldg.	53	XRF	2/17/97	1	Room	20	Wall	Middle Wall	Solid	Concrte	0.02
840	1971 Bldg.	54	XRF	2/17/97	1	Room	20	Wall	Baseboar	Solid	Tile	0.18
841	1971 Bldg.	55	XRF	2/17/97	1	Room	20	Wall	Mural	Solid	Concrte	0
842	1971 Bldg.	56	XRF	2/17/97	1	Room	20	Wall	Middle Wall	Solid	Concrte	0.01
843	1971 Bldg.	57	XRF	2/17/97	1	Room	20	Wall	Middle Wall	Solid	Concrte	0.02
844	1971 Bldg.	58	XRF	2/17/97	1	Room	20	Wall	Wall	Solid	Concrte	0
845	1971 Bldg.	59	XRF	2/17/97	1	Room	20	Wall	Wall	Solid	Concrte	0
846	1971 Bldg.	60	XRF	2/17/97	1	Room	20	Wall	Wall	Solid	Concrte	0
847	1971 Bldg.	61	XRF	2/17/97	1	Room	20	Wall	Middle Wall	Solid	Concrte	0.04
848	1971 Bldg.	62	XRF	2/17/97	1	Room	20	Window	Casing	Solid	Metal	0.16
849	1971 Bldg.	63	XRF	2/17/97	1	Room	21		Casing	Solid	Concrte	0.02
850	1971 Bldg.	64	XRF	2/17/97	1	Room	21		Elec Pane	Solid	Metal	0.06
851	1971 Bldg.	65	XRF	2/17/97	1	Room	21	Door	Casing	Cracked	Metal	0.01
852	1971 Bldg.	66	XRF	2/17/97	1	Room	21	Wall	Wall	Cracked	Concrte	0.01
853	1971 Bldg.	67	XRF	2/17/97	1	Room	21		Elec Pane	Solid	Metal	0.01
854	1971 Bldg.	68	XRF	2/17/97	1	Room	21	Closet	Wall	Solid	Concrte	0.05
855	1971 Bldg.	111	XRF	2/17/97	1	Room	22	Wall	Middle Wall	Solid	Concrte	0
856	1971 Bldg.	112	XRF	2/17/97	1	Room	22	Wall	Radiator	Solid	Metal	0.01
857	1971 Bldg.	113	XRF	2/17/97	1	Room	22	Door	Door	Cracked	Metal	0.03
858	1971 Bldg.	114	XRF	2/17/97	1	Room	22	Door	Casing	Cracked	Metal	0.03
859	1971 Bldg.	115	XRF	2/17/97	1	Room	22	Door	Casing	Cracked	Wood	0
860	1971 Bldg.	116	XRF	2/17/97	1	Room	22	Door	Door	Solid	Wood	0.02
861	1971 Bldg.	117	XRF	2/17/97	1	Room	22		Radiator	Solid	Metal	0.12
862	1971 Bldg.	118	XRF	2/17/97	1	Room	22	Closet	Wall	Solid	Concrte	0.05
863	1971 Bldg.	119	XRF	2/17/97	1	Room	22	Closet	Floor	Solid	Concrte	0
864	1971 Bldg.	120	XRF	2/17/97	1	Room	22	Closet	Casing	Solid	Metal	0.02
865	1971 Bldg.	121	XRF	2/17/97	1	Room	22	Ceiling		Solid	Plaster	0.02
866	1971 Bldg.	122	XRF	2/17/97	1	Room	22	Door	Door	Solid	Metal	0.03
867	1971 Bldg.	129	XRF	2/17/97	1	Room	23	Wall	Middle Wall	Solid	Concrte	0.02
868	1971 Bldg.	130	XRF	2/17/97	1	Room	23	Wall	Wall	Solid	Metal	0.03
869	1971 Bldg.	131	XRF	2/17/97	1	Room	23	Window	Casing	Solid	Metal	0.02
870	1971 Bldg.	132	XRF	2/17/97	1	Room	23	Door	Door	Solid	Metal	0.02
871	1971 Bldg.	182	XRF	2/17/97	1	Room	24	Wall	Wall	Solid	Concrte	0
872	1971 Bldg.	183	XRF	2/17/97	1	Room	24	Door	Casing	Cracked	Metal	0.01
873	1971 Bldg.	184	XRF	2/17/97	1	Room	24	Wall	Middle Wall	Solid	Concrte	0.04
874	1971 Bldg.	185	XRF	2/17/97	1	Room	24	Door	Casing	Cracked	Metal	0.02
875	1971 Bldg.	343	XRF	2/17/97	1	Stairwell	0	Stairs	Stringer	Cracked	Metal	0.03
876	1971 Bldg.	336	XRF	2/16/97	2	Stairwell	2	Wall	Middle Wall	Solid	Concrte	0.02
877	1971 Bldg.	337	XRF	2/16/97	2	Stairwell	2	Wall	Middle Wall	Solid	Concrte	0.03
878	1971 Bldg.	338	XRF	2/16/97	2	Stairwell	2	Wall	Middle Wall	Solid	Concrte	0
879	1971 Bldg.	339	XRF	2/16/97	2	Stairwell	2	Stairs	Hand rail	Solid	Wood	0.01
880	1971 Bldg.	340	XRF	2/16/97	2	Stairwell	2	Stairs	Baseboar	Cracked	Metal	0.06
881	1971 Bldg.	341	XRF	2/16/97	2	Stairwell	2	Stairs	Riser	Cracked	Metal	0.05
882	1971 Bldg.	342	XRF	2/16/97	2	Stairwell	2	Wall	Radiator	Solid	Metal	0
883	1971 Bldg.	343	XRF	2/16/97	2	Stairwell	2	Door	Door	Solid	Wood	0

Saint Paul Public Schools
 Cherokee Heights Pagea Magnet School
 Lead-Based Paint Inspection

3	A	B	C	D	E	F	G	H	I	J	K	L
	Site	Sample #	Analysis	Date	Floor	Area	Room#	Component	Feature	Condition	Substrate	Result
884	1971 Bldg.	344	XRF	2/16/97	2	Stairwell	2	Door	Jamb	Cracked	Metal	0.03
885	1971 Bldg.	345	XRF	2/16/97	2	Stairwell	2	Wall	Wall	Solid	Wood	0.05
886	1971 Bldg.	346	XRF	2/16/97	2	Stairwell	2	Door	Header	Solid	Metal	0.1
887	1971 Bldg.	348	XRF	2/16/97	2	Stairwell	3	Wall	Midle Wall	Solid	Concrte	0.02
888	1971 Bldg.	349	XRF	2/16/97	2	Stairwell	3	Wall	Midle Wall	Solid	Concrte	0
889	1971 Bldg.	350	XRF	2/16/97	2	Stairwell	3	Wall	Midle Wall	Solid	Concrte	0
890	1971 Bldg.	351	XRF	2/16/97	2	Stairwell	3	Wall	Midle Wall	Solid	Concrte	0.01
891	1971 Bldg.	352	XRF	2/16/97	2	Stairwell	3	Stairs	Hand rail	Solid	Wood	0.01
892	1971 Bldg.	353	XRF	2/16/97	2	Stairwell	3	Stairs	Baseboar	Cracked		0.06
893	1971 Bldg.	354	XRF	2/16/97	2	Stairwell	3	Stairs	Riser	Cracked		0.04
894	1971 Bldg.	355	XRF	2/16/97	2	Stairwell	3	Wall	Midle Wall	Cracked	Concrte	0.08
895	1971 Bldg.	356	XRF	2/16/97	2	Stairwell	3	Wall	Midle Wall	Cracked	Concrte	0
896	1971 Bldg.	357	XRF	2/16/97	2	Stairwell	3	Door	Door	Solid	Metal	0.03
897	1971 Bldg.	358	XRF	2/16/97	2	Stairwell	3	Door	Casing	Cracked	Metal	0.02
898	1971 Bldg.	359	XRF	2/16/97	2	Stairwell	3	Door	Door	Solid	Wood	0
899	1971 Bldg.	360	XRF	2/16/97	2	Stairwell	3	Door	Jamb	Cracked	Metal	0.02
900	1971 Bldg.	361	XRF	2/16/97	2	Stairwell	3	Wall	Wall	Solid	Wood	0
901	1971 Bldg.	362	XRF	2/16/97	2	Stairwell	3	Door	Door	Solid	Metal	0.06
902	1971 Bldg.	363	XRF	2/16/97	2	Stairwell	3	Door	Casing	Solid	Metal	0.02
903	1971 Bldg.	364	XRF	2/16/97	2	Stairwell	3	Door	Door	Solid	Metal	0.05
904	1971 Bldg.	365	XRF	2/16/97	2	Stairwell	3	Door	Jamb	Solid	Metal	0.05
905	1971 Bldg.	366	XRF	2/16/97	2	Stairwell	3	Door	Header	Solid	Metal	0.09
906	Community Center	199	XRF	2/17/97	1	Hall	1	Wall	Wall	Cracked	Concrte	0.02
907	Community Center	200	XRF	2/17/97	1	Hall	1	Door	Door	Solid	Metal	0.66
908	Community Center	201	XRF	2/17/97	1	Hall	1	Door	Casing	Solid	Metal	0.38
909	Community Center	202	XRF	2/17/97	1	Hall	1	Door	Door	Solid	Metal	0.72
910	Community Center	203	XRF	2/17/97	1	Hall	1	Door	Casing	Solid	Metal	0.14
911	Community Center	204	XRF	2/17/97	1	Hall	1	Wall	Midle Wall	Peeling	Concrte	0.02
912	Community Center	205	XRF	2/17/97	1	Hall	1	Ceiling		Solid	Concrte	0.02
913	Community Center	206	XRF	2/17/97	1	Hall	1	Ceiling		Solid		0.01
914	Community Center	207	XRF	2/17/97	1	Hall	1		Radiator	Cracked	Metal	0.01
915	Community Center	208	XRF	2/17/97	1	Hall	1	Wall	Wall	Cracked	Concrte	0
916	Community Center	209	XRF	2/17/97	1	Hall	1	Window	Casing	Solid	Metal	0
917	Community Center	210	XRF	2/17/97	1	Hall	1	Window	Casing	Solid		0
918	Community Center	211	XRF	2/17/97	1	Hall	2	Wall	Midle Wall	Solid	Concrte	0
919	Community Center	212	XRF	2/17/97	1	Hall	2	Door	Door	Solid	Wood	0
920	Community Center	213	XRF	2/17/97	1	Hall	2	Door	Casing	Solid	Metal	0.47
921	Community Center	214	XRF	2/17/97	1	Hall	2	Wall	Wall	Solid	Concrte	0
922	Community Center	215	XRF	2/17/97	1	Hall	2	Door	Door	Solid	Metal	0.69
923	Community Center	216	XRF	2/17/97	1	Hall	2	Door	Casing	Solid	Metal	0.41
924	Community Center	217	XRF	2/17/97	1	Hall	2	Ceiling		Solid	Drywall	0
925	Community Center	218	XRF	2/17/97	1	Hall	2		Radiator	Solid	Metal	0.01
926	Community Center	260	XRF	2/17/97	1	Hall	2	Door	Door	Solid	Metal	0.01
927	Community Center	261	XRF	2/17/97	1	Hall	2	Door	Casing	Cracked	Metal	0
928	Community Center	270	XRF	2/17/97	1	Hall	3	Wall	Midle Wall	Solid	Drywall	0
929	Community Center	315	XRF	2/17/97	1	Hall	4	Closet	Wall	Solid	Drywall	0
930	Community Center	316	XRF	2/17/97	1	Hall	4	Closet	Casing	Cracked	Metal	0.43
931	Community Center	335	XRF	2/17/97	1	Hall	4	Wall	Midle Wall	Solid	Drywall	0.03
932	Community Center	336	XRF	2/17/97	1	Hall	4	Door	Door	Solid	Metal	0.6
933	Community Center	337	XRF	2/17/97	1	Hall	4	Door	Casing	Solid	Metal	0.09
934	Community Center	338	XRF	2/17/97	1	Hall	4		Radiator	Solid	Metal	0
935	Community Center	339	XRF	2/17/97	1	Hall	4	Coat Rack		Solid	Wood	0
936	Community Center	323	XRF	2/17/97	1	Kitchen	1	Wall	Midle Wall	Solid	Drywall	0.06
937	Community Center	324	XRF	2/17/97	1	Kitchen	1	Door	Casing	Solid	Metal	0
938	Community Center	325	XRF	2/17/97	1	Kitchen	1	Door	Door	Solid	Wood	0
939	Community Center	326	XRF	2/17/97	1	Kitchen	1	Door	Casing	Cracked	Metal	0.47
940	Community Center	267	XRF	2/17/97	1	Main	0	Stairs	Wall	Cracked	Drywall	0
941	Community Center	268	XRF	2/17/97	1	Main	0	Stairs	Column	Solid	Metal	0.02
942	Community Center	269	XRF	2/17/97	1	Main	0	Floor		Cracked	Concrte	0.01
943	Community Center	361	XRF	2/17/97	1	Other	0	Bench		Peeling	Wood	0
944	Community Center	368	XRF	2/17/97	1	Other	0	Stairs	Hand rail	Cracked	Metal	0
945	Community Center	356	XRF	2/17/97	3	Outside	0	Ext Wall	Fascia Br	Solid	Metal	0.02
946	Community Center	357	XRF	2/17/97	3	Outside	0	Ext Wall	Fascia Br	Solid	Wood	0.42

Saint Paul Public Schools
Cherokee Heights Pagea Magnet School
Lead-Based Paint Inspection

3	A	B	C	D	E	F	G	H	I	J	K	L
Site	Sample #	Analysis	Date	Floor	Area	Room#	Component	Feature	Condition	Substrate	Result	
947	Community Center	358	XRF	2/17/97	3	Outside	0	Ext Wall	Trim	Solid	Metal	0
948	Community Center	359	XRF	2/17/97	1	Outside	0	Door	Door	Solid	Metal	0.59
949	Community Center	360	XRF	2/17/97	1	Outside	0	Door	Jamb	Solid	Metal	0.37
950	Community Center	369	XRF	2/17/97	1	Outside	0	Sign		Cracked	Wood	0
951	Community Center	221	XRF	2/17/97	1	Restroom	1	Wall	Middle Wall	Solid	Concrte	0
952	Community Center	222	XRF	2/17/97	1	Restroom	1	Door	Casing	Solid	Metal	0.04
953	Community Center	223	XRF	2/17/97	1	Restroom	1	Door	Door	Solid	Wood	0
954	Community Center	224	XRF	2/17/97	1	Restroom	1	Ceiling		Solid	Drywall	0
955	Community Center	225	XRF	2/17/97	1	Restroom	2	Wall	Wall	Solid	Concrte	0
956	Community Center	226	XRF	2/17/97	1	Restroom	2	Door	Casing	Solid	Metal	0
957	Community Center	227	XRF	2/17/97	1	Restroom	2	Door	Door	Solid	Wood	0
958	Community Center	233	XRF	2/17/97	1	Restroom	3	Wall	Middle Wall	Solid	Concrte	0
959	Community Center	234	XRF	2/17/97	1	Restroom	3	Wall	Baseboar	Solid	Tile	0.14
960	Community Center	235	XRF	2/17/97	1	Restroom	3	Door	Door	Cracked	Wood	0
961	Community Center	236	XRF	2/17/97	1	Restroom	3	Door	Casing	Cracked	Metal	0.44
962	Community Center	237	XRF	2/17/97	1	Restroom	3		Bthrm Stil	Cracked	Metal	0.29
963	Community Center	238	XRF	2/17/97	1	Restroom	3	Ceiling		Solid	Drywall	0.02
964	Community Center	239	XRF	2/17/97	1	Restroom	4	Wall	Wall	Solid	Concrte	0.01
965	Community Center	240	XRF	2/17/97	1	Restroom	4	Wall	Baseboar	Solid	Tile	0.11
966	Community Center	241	XRF	2/17/97	1	Restroom	4	Wall	Radiator	Solid	Metal	0
967	Community Center	242	XRF	2/17/97	1	Restroom	4	Door	Door	Solid	Wood	0
968	Community Center	243	XRF	2/17/97	1	Restroom	4	Door	Casing	Solid	Metal	0.27
969	Community Center	244	XRF	2/17/97	1	Restroom	4		Bthrm Stil	Cracked	Metal	0.34
970	Community Center	302	XRF	2/17/97	1	Restroom	5	Wall	Wall	Solid	Drywall	0.01
971	Community Center	303	XRF	2/17/97	1	Restroom	5	Door	Door	Solid	Wood	0
972	Community Center	304	XRF	2/17/97	1	Restroom	5	Door	Casing	Solid	Metal	0.22
973	Community Center	305	XRF	2/17/97	1	Restroom	5		Bthrm Stil	Solid	Metal	0.02
974	Community Center	306	XRF	2/17/97	1	Restroom	5	Wall	Baseboar	Solid	Tile	0.79
975	Community Center	307	XRF	2/17/97	1	Restroom	5	Ceiling		Solid	Drywall	0
976	Community Center	317	XRF	2/17/97	1	Restroom	6	Closet	Casing	Solid	Drywall	0.01
977	Community Center	318	XRF	2/17/97	1	Restroom	6	Wall	Radiator	Solid	Metal	0.01
978	Community Center	319	XRF	2/17/97	1	Restroom	6	Wall	Baseboar	Solid	Tile	0.58
979	Community Center	320	XRF	2/17/97	1	Restroom	6		Bthrm Stil	Cracked	Metal	0.06
980	Community Center	321	XRF	2/17/97	1	Restroom	6	Door	Door	Solid	Wood	0
981	Community Center	322	XRF	2/17/97	1	Restroom	6	Door	Casing	Solid	Metal	0.39
982	Community Center	257	XRF	2/17/97	1	Room	1	Wall	Middle Wall	Solid	Concrte	0.01
983	Community Center	258	XRF	2/17/97	1	Room	1	Floor		Solid	Concrte	0.02
984	Community Center	259	XRF	2/17/97	1	Room	1	Hood Vent		Solid	Metal	0
985	Community Center	312	XRF	2/17/97	1	Room	2	Wall	Middle Wall	Solid	Concrte	0.01
986	Community Center	313	XRF	2/17/97	1	Room	2	Wall	Middle Wall	Solid	Drywall	0
987	Community Center	314	XRF	2/17/97	1	Room	2	Wire Tray		Solid	Metal	0.34
988	Community Center	219	XRF	2/17/97	1	Room	3	Wall	Wall	Solid	Concrte	0.01
989	Community Center	220	XRF	2/17/97	1	Room	3	Cabinet	Door	Solid	Wood	0
990	Community Center	327	XRF	2/17/97	1	Room	3	Wall	Wall	Solid	Drywall	0
991	Community Center	328	XRF	2/17/97	1	Room	3	Door	Door	Solid	Metal	0.54
992	Community Center	329	XRF	2/17/97	1	Room	3	Door	Casing	Solid	Metal	0.26
993	Community Center	330	XRF	2/17/97	1	Room	3	Door	Door	Solid	Wood	0
994	Community Center	331	XRF	2/17/97	1	Room	3	Cabinet	Door	Solid	Wood	0
995	Community Center	332	XRF	2/17/97	1	Room	3	Wall	Wall	Cracked	Drywall	0.1
996	Community Center	333	XRF	2/17/97	1	Room	3	Door	Door	Solid	Wood	0
997	Community Center	334	XRF	2/17/97	1	Room	3	Door	Casing	Cracked	Metal	0.46
998	Community Center	228	XRF	2/17/97	1	Room	103	Door	Door	Solid	Wood	0.02
999	Community Center	245	XRF	2/17/97	1	Room	103	Wall	Middle Wall	Cracked	Concrte	0.05
1000	Community Center	246	XRF	2/17/97	1	Room	103	Door	Door	Solid	Wood	0
1001	Community Center	247	XRF	2/17/97	1	Room	103	Door	Casing	Solid	Metal	0.21
1002	Community Center	248	XRF	2/17/97	1	Room	104	Wall	Middle Wall	Solid	Concrte	0
1003	Community Center	249	XRF	2/17/97	1	Room	104	Door	Door	Solid	Metal	0.66
1004	Community Center	250	XRF	2/17/97	1	Room	104	Door	Casing	Solid	Metal	0.17
1005	Community Center	251	XRF	2/17/97	1	Room	104	Cabinet	Door	Solid	Wood	0
1006	Community Center	252	XRF	2/17/97	1	Room	104	Wall	Chair rail	Solid	Wood	0
1007	Community Center	253	XRF	2/17/97	1	Room	104	Wire Tray		Solid	Metal	0.03
1008	Community Center	254	XRF	2/17/97	1	Room	104	Door	Door	Solid	Wood	0
1009	Community Center	255	XRF	2/17/97	1	Room	104	Door	Casing	Cracked	Metal	0.31

Saint Paul Public Schools
 Cherokee Heights Pagea Magnet School
 Lead-Based Paint Inspection

	A	B	C	D	E	F	G	H	I	J	K	L
3	Site	Sample #	Analysis	Date	Floor	Area	Room#	Component	Feature	Condition	Substrate	Result
1010	Community Center	256	XRF	2/17/97	1	Room	104	Wall	Wall Rgstr	Solid	Metal	0
1011	Community Center	229	XRF	2/17/97	1	Room	108	Wall	Midle Wall	Solid	Concrte	0
1012	Community Center	230	XRF	2/17/97	1	Room	108	Wall	Wall	Solid	Concrte	0.02
1013	Community Center	231	XRF	2/17/97	1	Room	108	Door	Door	Solid	Wood	0
1014	Community Center	232	XRF	2/17/97	1	Room	108	Door	Casing	Cracked	Metal	0.34
1015	Community Center	308	XRF	2/17/97	1	Room	201	Wall	Wall	Solid	Drywall	0.01
1016	Community Center	309	XRF	2/17/97	1	Room	201	Door	Door	Solid	Wood	0
1017	Community Center	310	XRF	2/17/97	1	Room	201	Door	Casing	Cracked	Metal	0.52
1018	Community Center	311	XRF	2/17/97	1	Room	201	Window	Casing	Solid	Metal	0.02
1019	Community Center	299	XRF	2/17/97	1	Room	206	Wall	Midle Wall	Solid	Concrte	0
1020	Community Center	300	XRF	2/17/97	1	Room	206	Door	Door	Solid	Wood	0
1021	Community Center	301	XRF	2/17/97	1	Room	206	Door	Casing	Solid	Metal	0.27
1022	Community Center	296	XRF	2/17/97	1	Room	209	Door	Casing	Solid	Drywall	0.02
1023	Community Center	297	XRF	2/17/97	1	Room	209	Door	Door	Solid	Wood	0
1024	Community Center	298	XRF	2/17/97	1	Room	209	Door	Casing	Cracked	Metal	0.33
1025	Community Center	281	XRF	2/17/97	1	Room	211	Wall	Midle Wall	Solid	Drywall	0.04
1026	Community Center	282	XRF	2/17/97	1	Room	211	Door	Door	Solid	Wood	0
1027	Community Center	283	XRF	2/17/97	1	Room	211	Door	Casing	Cracked	Metal	0.01
1028	Community Center	276	XRF	2/17/97	1	Room	213	Wall	Wall	Solid	Drywall	0.73
1029	Community Center	277	XRF	2/17/97	1	Room	213	Door	Door	Solid	Wood	0
1030	Community Center	278	XRF	2/17/97	1	Room	213	Door	Jamb	Cracked	Metal	0.19
1031	Community Center	279	XRF	2/17/97	1	Room	213	Wall	Midle Wall	Cracked	Drywall	0
1032	Community Center	280	XRF	2/17/97	1	Room	213	Wall	Midle Wall	Cracked	Drywall	0.69
1033	Community Center	293	XRF	2/17/97	1	Room	215	Window	Casing	Solid	Drywall	0.58
1034	Community Center	294	XRF	2/17/97	1	Room	215	Door	Door	Solid	Wood	0
1035	Community Center	295	XRF	2/17/97	1	Room	215	Door	Casing	Solid	Metal	0.43
1036	Community Center	284	XRF	2/17/97	1	Room	216	Door	Casing	Solid	Drywall	0
1037	Community Center	285	XRF	2/17/97	1	Room	216	Cabinet	Door	Solid	Wood	0
1038	Community Center	286	XRF	2/17/97	1	Room	216	Door	Door	Solid	Wood	0
1039	Community Center	287	XRF	2/17/97	1	Room	216	Door	Jamb	Cracked	Metal	0.73
1040	Community Center	288	XRF	2/17/97	1	Room	217	Wall	Wall	Solid	Drywall	0
1041	Community Center	289	XRF	2/17/97	1	Room	217	Cabinet	Door	Solid	Wood	0
1042	Community Center	290	XRF	2/17/97	1	Room	217	Door	Door	Solid	Wood	0
1043	Community Center	291	XRF	2/17/97	1	Room	217	Door	Casing	Solid	Metal	0.3
1044	Community Center	292	XRF	2/17/97	1	Room	217	Window	Casing	Solid	Metal	0.04
1045	Community Center	76	XRF	2/15/97	1	Stairwell	1	Stairs	Stringer	Cracked	Metal	0.04
1046	Community Center	262	XRF	2/17/97	1	Stairwell	1	Stairs	Stringer	Cracked	Concrte	0.01
1047	Community Center	263	XRF	2/17/97	1	Stairwell	1	Stairs	Baseboar	Cracked	Concrte	0
1048	Community Center	264	XRF	2/17/97	1	Stairwell	1	Stairs	Baluster	Solid	Metal	0.01
1049	Community Center	265	XRF	2/17/97	1	Stairwell	1	Stairs	Rail cap	Solid	Wood	0
1050	Community Center	266	XRF	2/17/97	1	Stairwell	1	Stairs	Wall	Solid	Concrte	0.04

APPENDIX B

LABORATORY SAMPLE ANALYSIS DATA

LABORATORY ANALYSIS REPORT

DATE: February 24, 1997 **PAGE:** 1 Of 1

CLIENT: Midwest Environmental Cons. **PROJECT NO.:** 022097-200888
5385 401st Ave. NW **COLLECTION DATE:** 2/19/97
Dalbo, MN 55017 **COLLECTED BY:** Client
RECEIVED DATE: 2/20/97
PROJECT DESCRP.: 62/0197J Cherokee Hts

CONTACT: Greg Myers/Richard Cox

<u>SAMPLE #</u>	<u>DESCP.</u>	<u>MDL</u>	<u>LEAD</u>	
			<u>RESULTS</u>	<u>ANALYSIS</u>
L970906-1	B1	2.9	320	2/24/97
L970906-2	B2	4.5	830	2/24/97
L970906-3	B3	5.8	1300	2/24/97
L970906-4	B4	71	200	2/24/97
L970906-5	B5	17	1100	2/24/97
L970906-6	B6	9.7	1300	2/24/97
L970906-7	B7	190	ND	2/24/97
L970906-8	B8	7.5	3300	2/24/97
L970906-9	B9	260	25,000	2/24/97

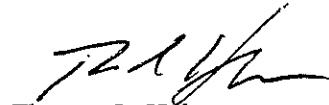
ND means Not Detected or below reported MDL

MDL means Method Detection Limit

mg/kg means Milligrams Per Kilogram which is equivalent to Parts Per Million (ppm)

This report has been reviewed by me for technical accuracy and completeness. The analyses were performed using EPA or other approved methodologies and the results were reported on an "as received" basis unless otherwise noted. Organic soil analyses were reported on a dry weight basis. The results reported relate only to the items tested. Please contact me if you have any questions or comments regarding this report. Spectrum Labs, Inc. appreciates the opportunity to provide this analytical service for you.

Report Submitted By,



Thomas L. Halverson
Laboratory Manager

TLH:wmc
mec055-5

As a mutual protection, all reports are submitted in confidentiality and may not be reproduced except in full without written authorization.





Midwest Environmental Consulting, L.L.C.

5385 401st Ave. NW, Daibo, MN 55017
612-689-3612/612-757-5541/FAX-612-689-5209

Client Address

Contact Greg Myers / Rick and Cox

CHAIN OF CUSTODY RECORD

Project Number 62/0197
Client Saint Anne's ISD
Project Cherokee Heights
Phone/Fax _____

Sample ID	Sample Description	Collection Date/Time	Matrix (Vol./Area)	Analysis Requested
62/0197- B-1	Rm 5 3rd floor Preservation box - orange plastic	2/19/97 4:30	1 1/2"	9NO-1
- B-2	Stairwell 1st - ceiling tile - orange plastic	2/19/97 4:40	1 1/2"	2
- B-3	3rd Floor - side A - orange plastic	2/19/97 5:15	1 1/2"	3
B-4	Rm 302 gate 1 side D Blue paint on plaster	2/19/97 5:35	1 1/2"	4
B-5	Rm 201 3rd floor ceiling tile - orange plastic	2/19/97 5:40	1 1/2"	5
B-6	Rm 251 site 15 deck ground welding wire - white	2/19/97 5:40	1 1/2"	6
B-7	Hall 2 site 1 stair tread to outside, Red oak side D woodwork	2/19/97 6:15	2"	7
B-8	Hall 2 site 1 Cherry rail white side C	2/19/97 6:20	2"	8
B-9	Hall between Cherokee Heights & Daibo community center 600 - Jan side D	2/19/97 8:25	2"	9

Sampled By: Greg Myers Date: 2/19/97 Time: 1:15

Delivered By: Greg Myers Date: 2/20/97 Time: 2:35a

Received By: _____ Date: _____ Time: _____

Delivered By: _____ Date: _____ Time: _____

Received By Lab: A. Amiguel Date: 2/20/97 Time: 9:35

Disposition of Samples _____

Notes: Reporting parts per million (PPM)

**APPENDIX C
INSPECTORS**

**Greg A. Myers
MDH Lead Inspector # 116**