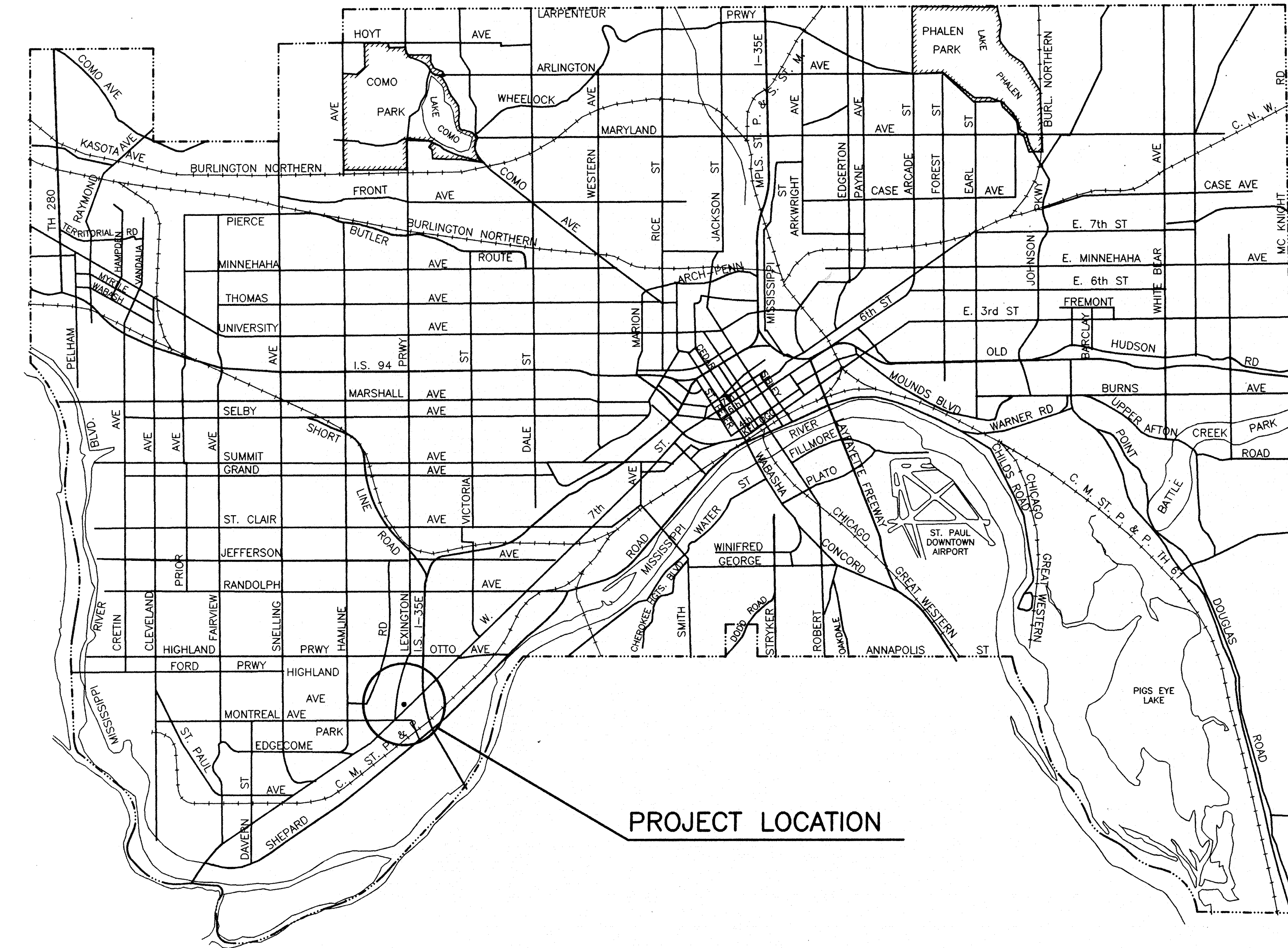
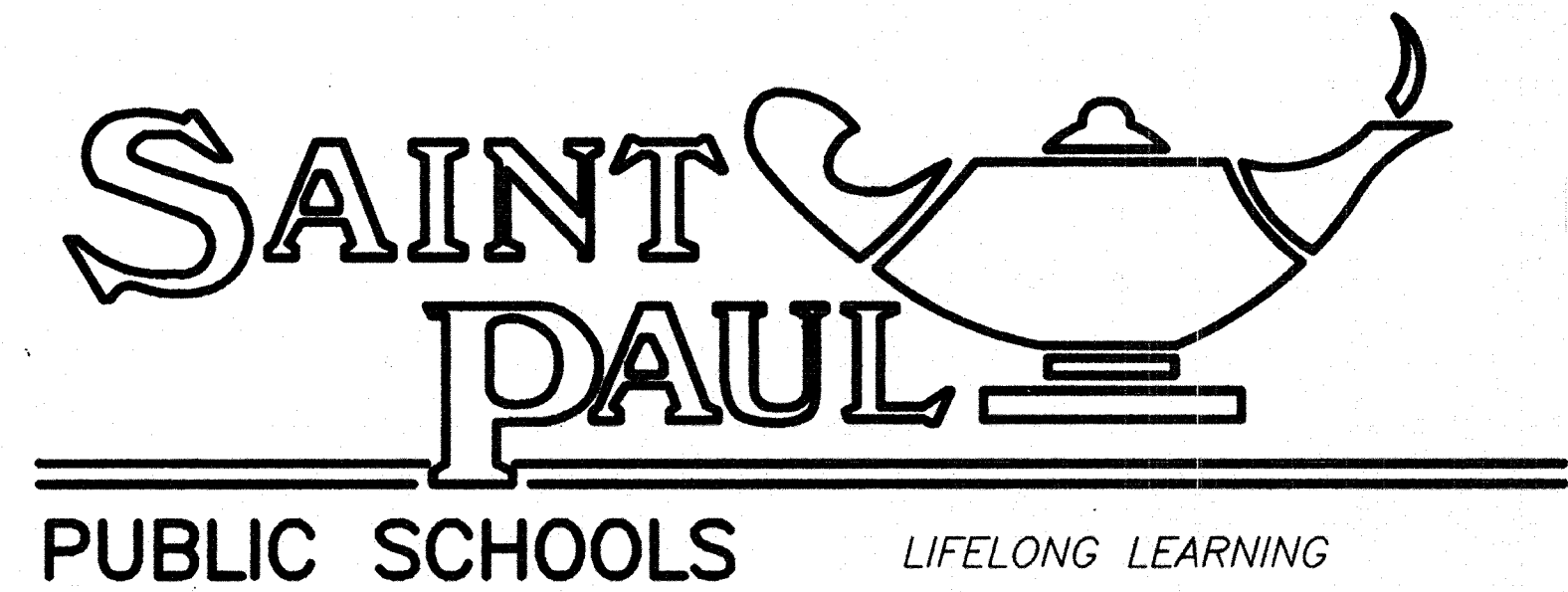




Appendix C
Drawings Item 'iii'
1998 Sanitary Sewer



PROJECT LOCATION



RIVERSIDE BUILDING SERVICE REPAIR

NEW SANITARY SEWER SERVICE TO LEXINGTON PKWY.

SHEET	DESCRIPTION
1	TITLE SHEET & LOCATION PLAN
2	PLAN & PROFILE AND DETAILS
3	SEWER SERVICE PLAN
4	LIFT STATION & DETAILS

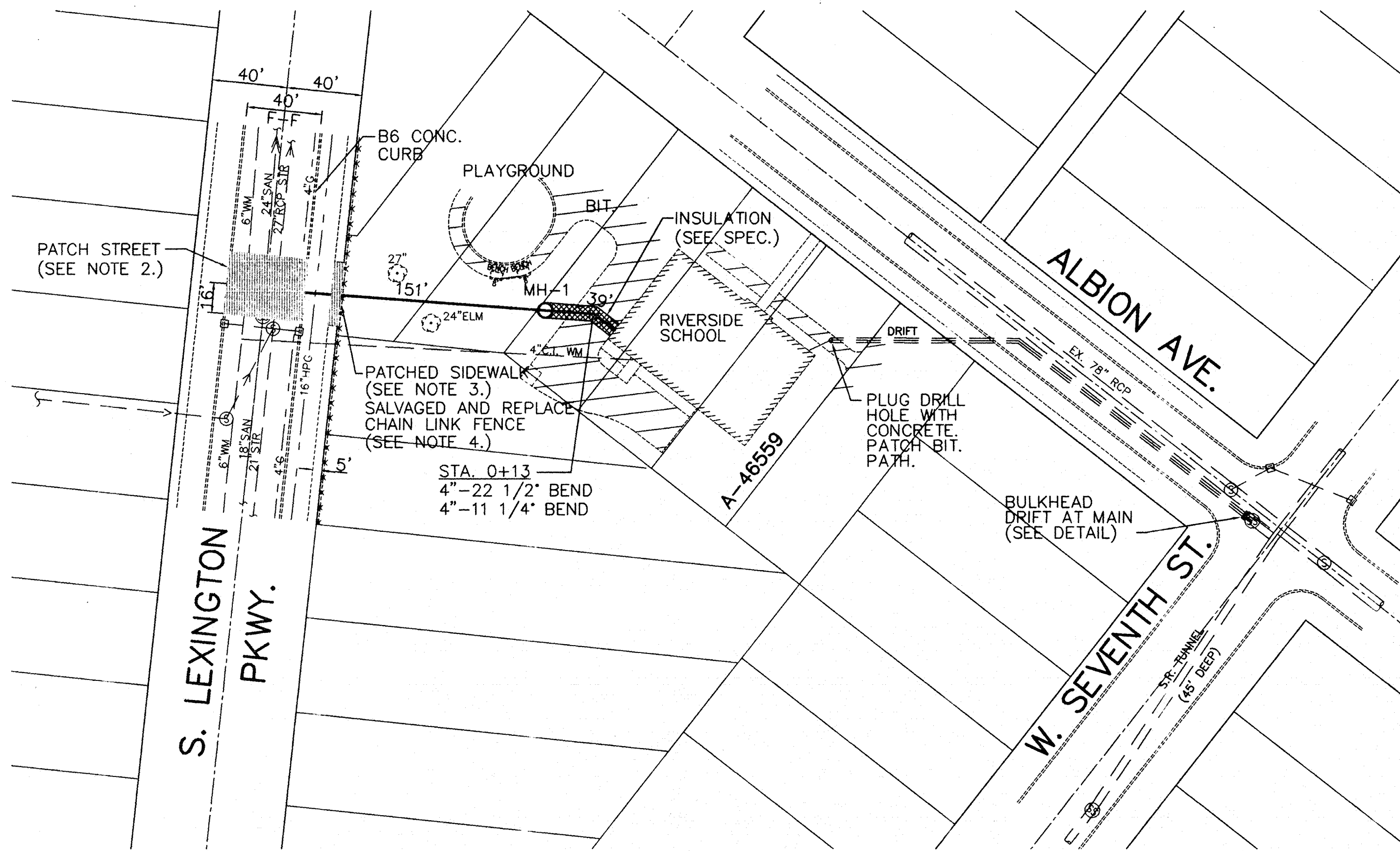
BOARD OF EDUCATION

CHAIR	MARY THORNTON-PHILLIPS
VICE-CHAIR	MARC MANDERSCHIED
CLERK	NEAL THAO
TREASURER	BECKY MONTGOMERY
MEMBER	TOM CONLON
MEMBER	GREG FELICE
MEMBER	AL OERTWIG

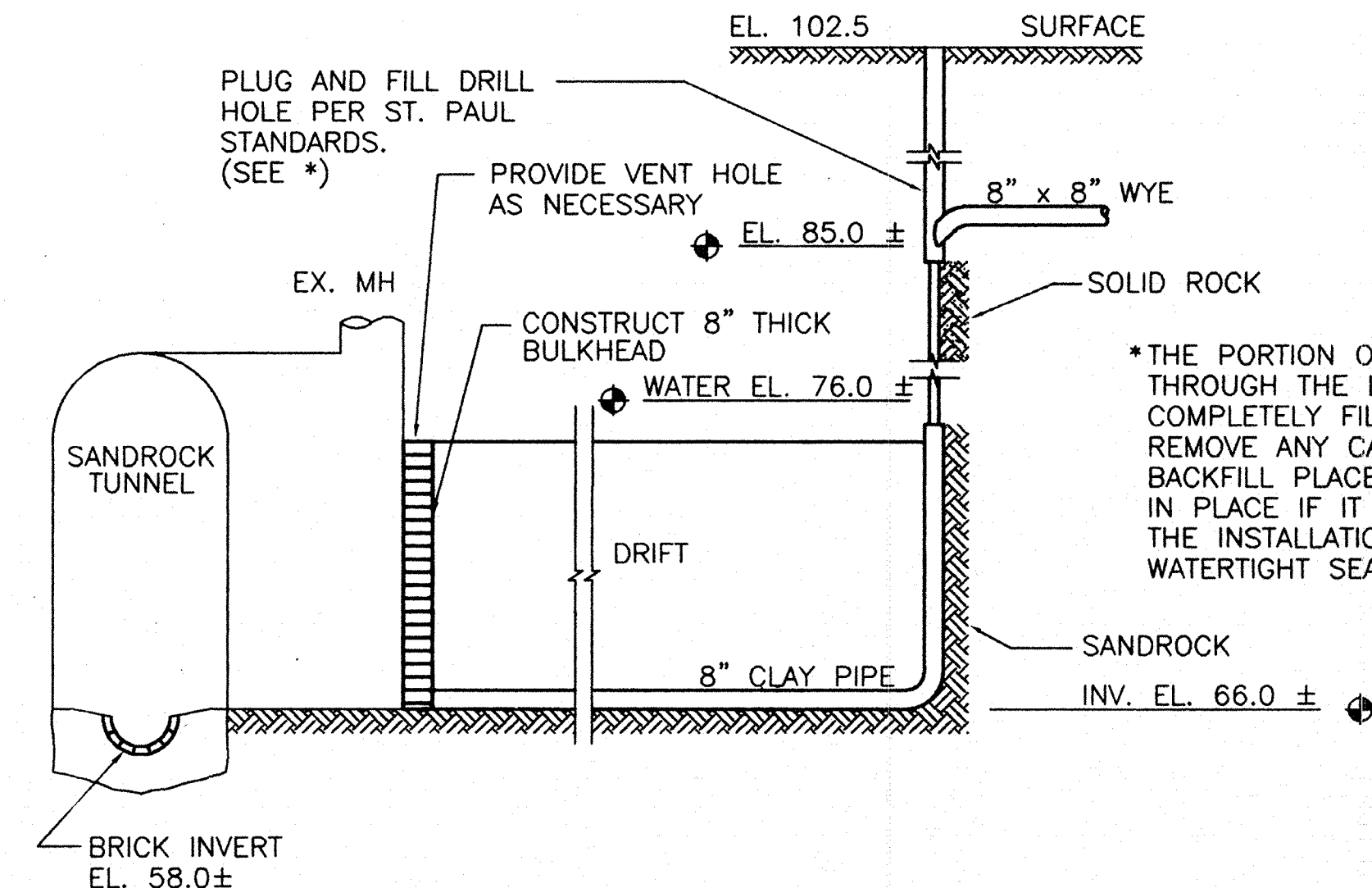
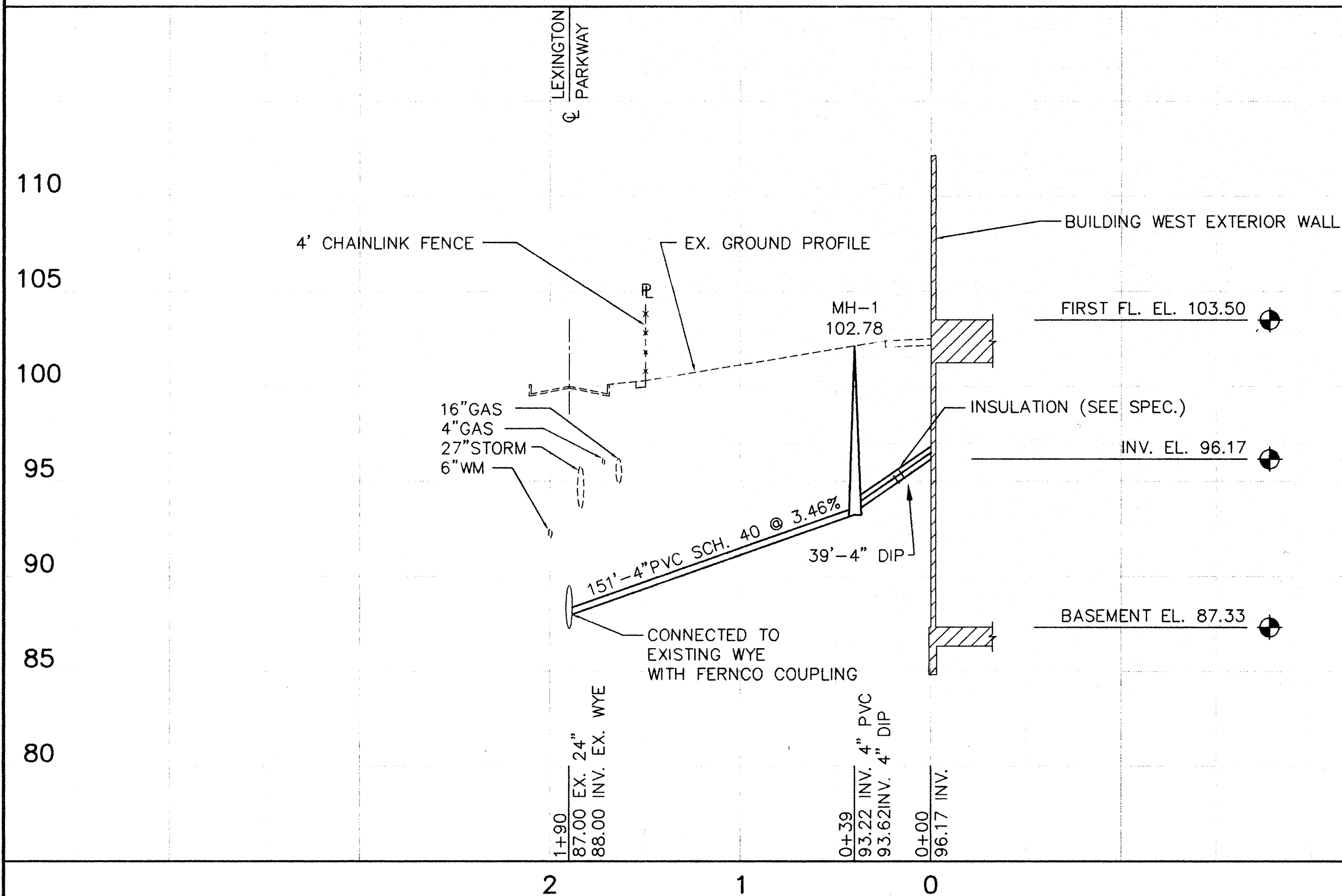
RECORD PLAN
M.E.G. APRIL 98

CONTRACTOR: NEW MECH COMPANIES

I HEREBY CERTIFY THAT THIS PLAN WAS PREPARED BY ME OR UNDER MY DIRECT SUPERVISION AND THAT I AM A DULY REGISTERED PROFESSIONAL ENGINEER UNDER THE LAWS OF THE STATE OF MINNESOTA. <i>Marc Manderscheid</i> DATE 7-24-98 REG. NO. 16610 © BONESTROO, ROSENE, ANDERLIK & ASSOCIATES, INC. 1996		SURVEY DRAWN DESIGNED APPROVED DATE 7-24-98 COMM. 37311	REVISION RPH TWP TWP DATE 7-24-98 COMM. 37311	DATE
Bonestroo Rosene Anderslik & Associates		Engineers & Architects ST. PAUL • MILWAUKEE		
SAINT PAUL PUBLIC SCHOOLS RIVERSIDE BUILDING SERVICE REPAIR NEW SANITARY SEWER SERVICE TO LEXINGTON PKWY. TITLE SHEET & LOCATION PLAN				
SHEET 1 OF 4		37311		

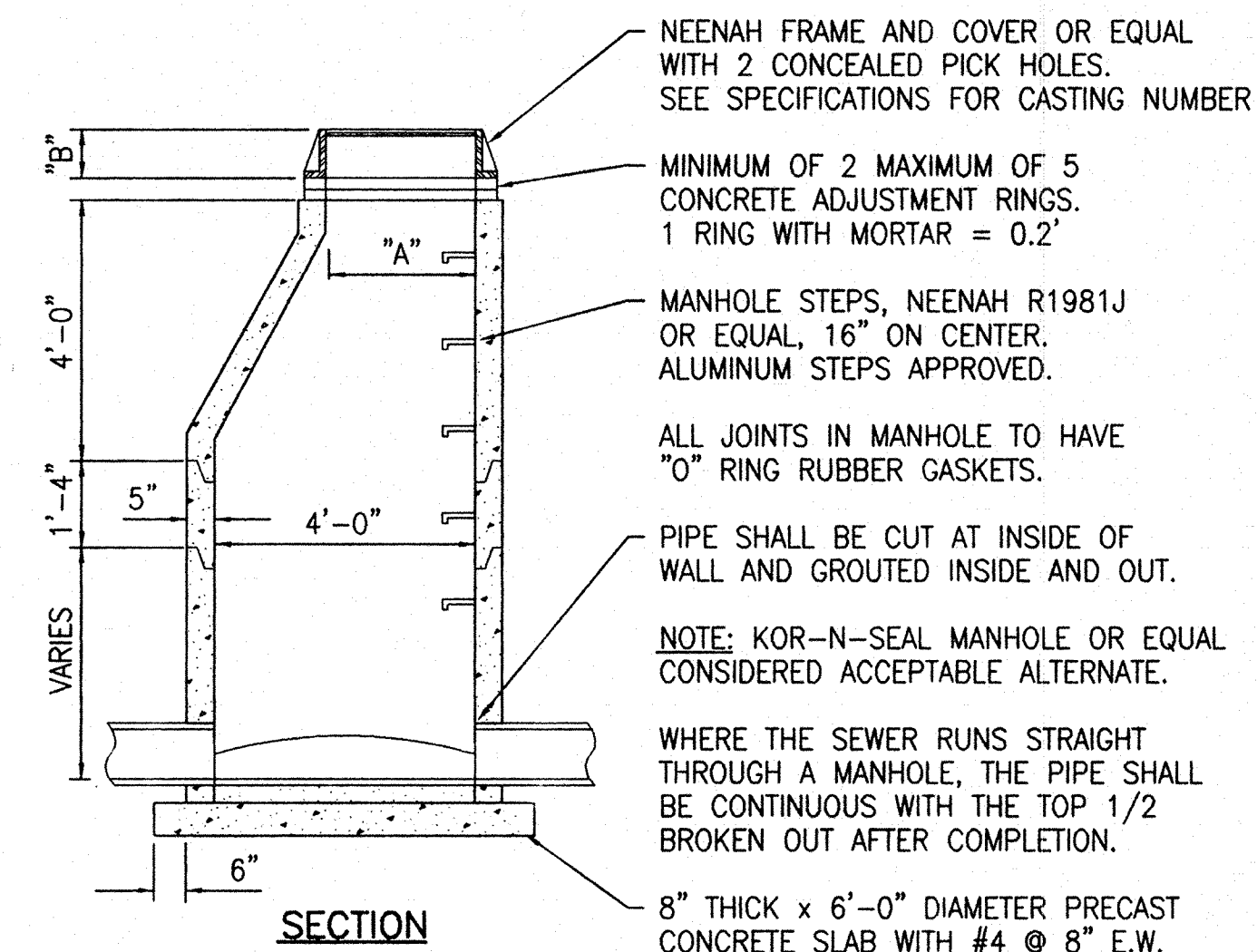


SANITARY SERVICE



BULKHEAD AND ABANDON DRIFT TUNNEL

NO SCALE

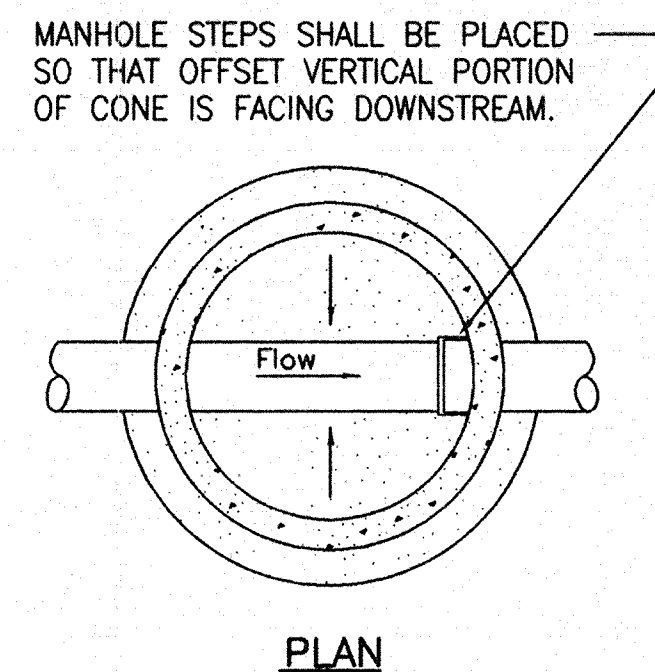


SANITARY SEWER MANHOLE

NO SCALE

NOTES:

- CONTRACTOR SHALL UNCOVER EXISTING UTILITIES (GAS, STORM, SEWER, TELEPHONE, ELECTRIC, ETC.) PRIOR TO CONSTRUCTION TO AVOID CONFLICT.
- THE HOUSE DRAIN CONTRACTOR SHALL TEMPORARILY PATCH LEXINGTON PARKWAY PER CITY OF ST. PAUL REQUIREMENTS. PERMANENT REPAIR OF THE STREET WILL BE DONE BY CITY FORCES.
- REMOVE AND REPLACE SECTION OF CONCRETE SIDEWALK ALONG EAST SIDE OF LEXINGTON PARKWAY AT 4" PVC PIPE CROSSING.
- SALVAGE AND REPLACE SECTION OF CHAINLINK FENCE AND CONCRETE BASE ALONG EAST SIDE OF LEXINGTON PARKWAY AT 4" PVC PIPE CROSSING.
- RESTORE GRASSY AREAS BETWEEN LEXINGTON PARKWAY AND RIVERSIDE SCHOOL WITH SOD AND 4" OF TOPSOIL.
- RESTORE BITUMINOUS PAVEMENT NEXT TO BUILDING IN-KIND.
- SALVAGE AND REPLACE PARK BENCHES THAT ARE REMOVED DUE TO THE CONSTRUCTION.



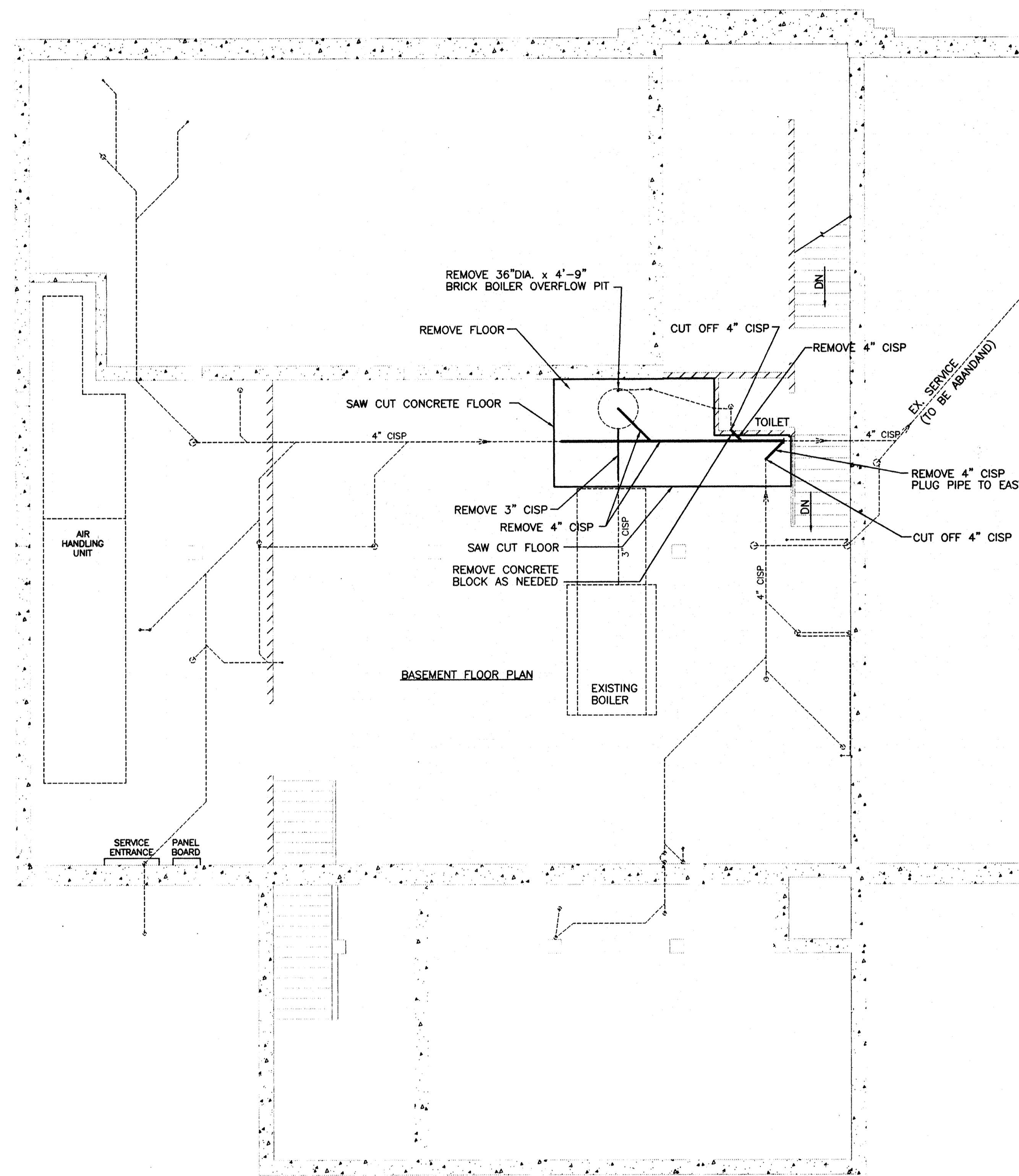
CASTING	A	B
R1772B	24"	7"
R1760B	27"	9"
R1642B	27"	7"
R1940A	24"	6"
R1755F	24"	9"
R1755G	27"	7"

GROUT BOTTOM OF MANHOLE TO 1/2 DIAMETER AT PIPE AND SLOPE GROUT 2" TOWARD INVERT.

RECORD PLAN
M.E.G. APRIL 98

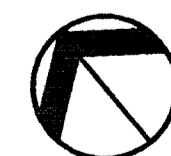
CONTRACTOR: NEW MECH COMPANIES

DATE	REVISION	SURVEY	DRAWN	DESIGNED	APPROVED	DATE	COMM.
<p>HEREBY CERTIFY THAT THIS PLAN WAS PREPARED BY ME OR UNDER MY DIRECT SUPERVISION AND THAT I AM A DULY REGISTERED PROFESSIONAL ENGINEER UNDER THE LAWS OF THE STATE OF MINNESOTA.</p> <p><i>Thomas W. Peterson</i> DATE 7-24-98 REG. NO. 37311 © BONESTROO, ROSENE, ANDERLIK & ASSOCIATES, INC. 1996</p>							
<p>Engineers & Architects Bonestroo Rosene Anderslik & Associates St. Paul • Milwaukee</p>							
<p>SAINT PAUL PUBLIC SCHOOLS RIVERSIDE BUILDING SERVICE REPAIR NEW SANITARY SEWER SERVICE TO LEXINGTON PKWY. PLAN AND PROFILE AND MISC. DETAILS</p>							
<p>SHEET 2 OF 4</p>							

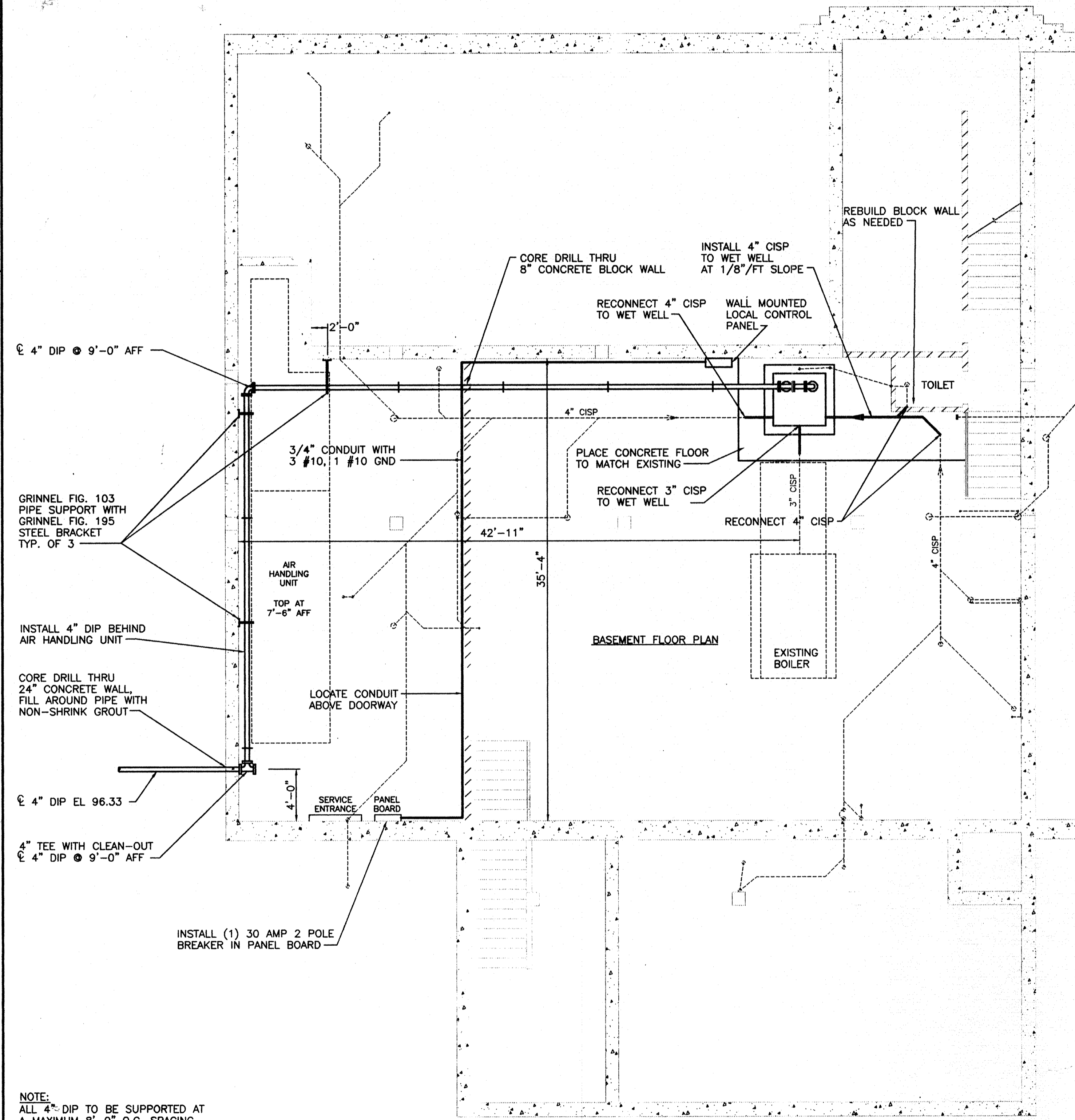


EXISTING SEWER SERVICE PLAN

0 1 2 3 4
SCALE IN FEET

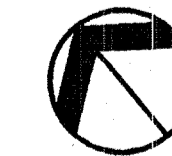


NOTE:
ALL 4" DIP TO BE SUPPORTED AT
A MAXIMUM 8'-0" O.C. SPACING.



SEWER SERVICE PLAN

0 1 2 3 4
SCALE IN FEET



RECORD PLAN
M.E.G. APRIL '98

CONTRACTOR: NEW MECH COMPANIES

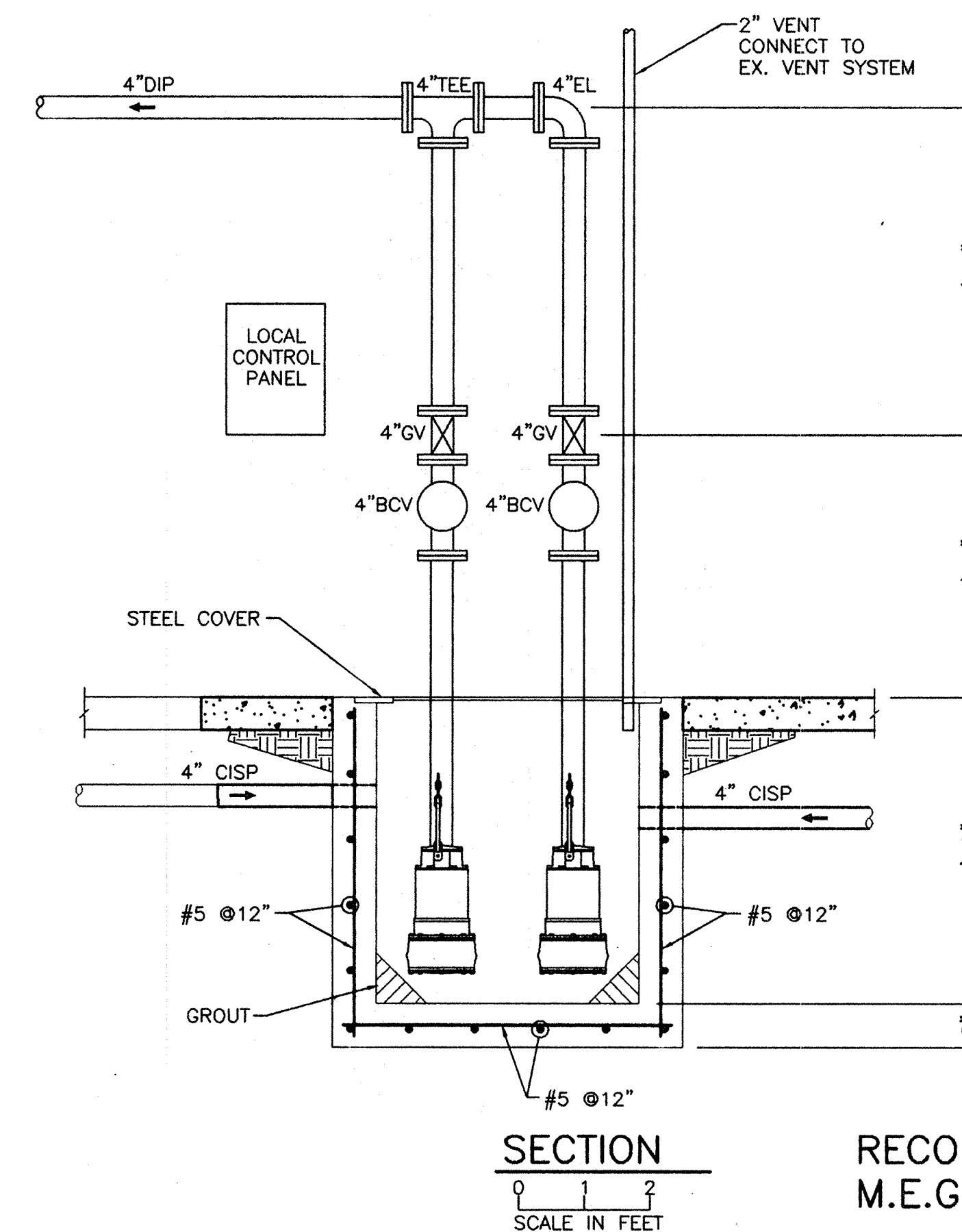
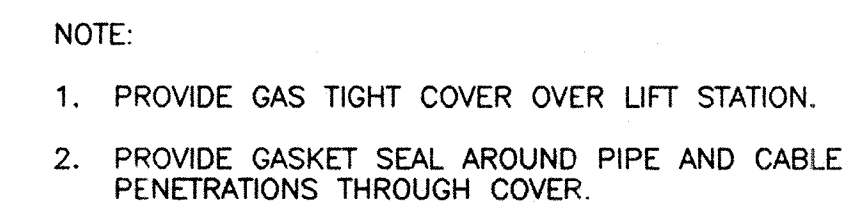
SAINT PAUL PUBLIC SCHOOLS
RIVERSIDE BUILDING SERVICE REPAIR
NEW SANITARY SERVICE TO LEXINGTON PKWY.
INTERIOR SEWER SERVICE PLAN

Bonestroo
Rosene
Anderlik &
Associates

Engineers & Architects
St. Paul • Milwaukee


I HEREBY CERTIFY THAT THIS PLAN WAS PREPARED
BY ME OR UNDER MY DIRECT SUPERVISION AND THAT
I AM A DULY REGISTERED PROFESSIONAL ENGINEER
UNDER THE LAWS OF THE STATE OF MINNESOTA.
Paul C. Bonestroo
DATE 7-31-96 REG. NO. 11609
© BONESTROO, ROSENE, ANDERLIK & ASSOCIATES, INC. 1996

SURVEY	REVISION	DATE
DRAWN LHK		
DESIGNED DLK		
APPROVED RWF		
DATE 7-31-98		
COMM. 37311	37311.02.DWG	8



RECORD PLAN
M.E.G. APRIL 98

CONTRACTOR: NEW MECH COMPANIES

4	37311	 Bonestroo Rosene Anderlik & Associates Engineers & Architects	SAINT PAUL PUBLIC SCHOOLS RIVERSIDE BUILDING SERVICE REPAIR NEW SANITARY SERVICE TO LEXINGTON PKWY. LIFT STATION PLAN AND SECTIONS		DATE 7-31-96 REG. NO. 11609 © BONESTROO, ROSENE, ANDERLIK & ASSOCIATES, INC. 1996 COMM. 37311		HEREBY CERTIFY THAT THIS PLAN WAS PREPARED BY ME OR UNDER MY CLOSE PERSONAL SUPERVISION I AM A DULY REGISTERED PROFESSIONAL ENGINEER UNDER THE LAWS OF THE STATE OF MINNESOTA. <i>[Signature]</i> DATE 7-31-96 REG. NO. 11609 APPROVED RWF DESIGNED DLK DRAWN LHK SURVEY		REVISION	DATE
			4	OF	37311	27311.01.DWG	64			