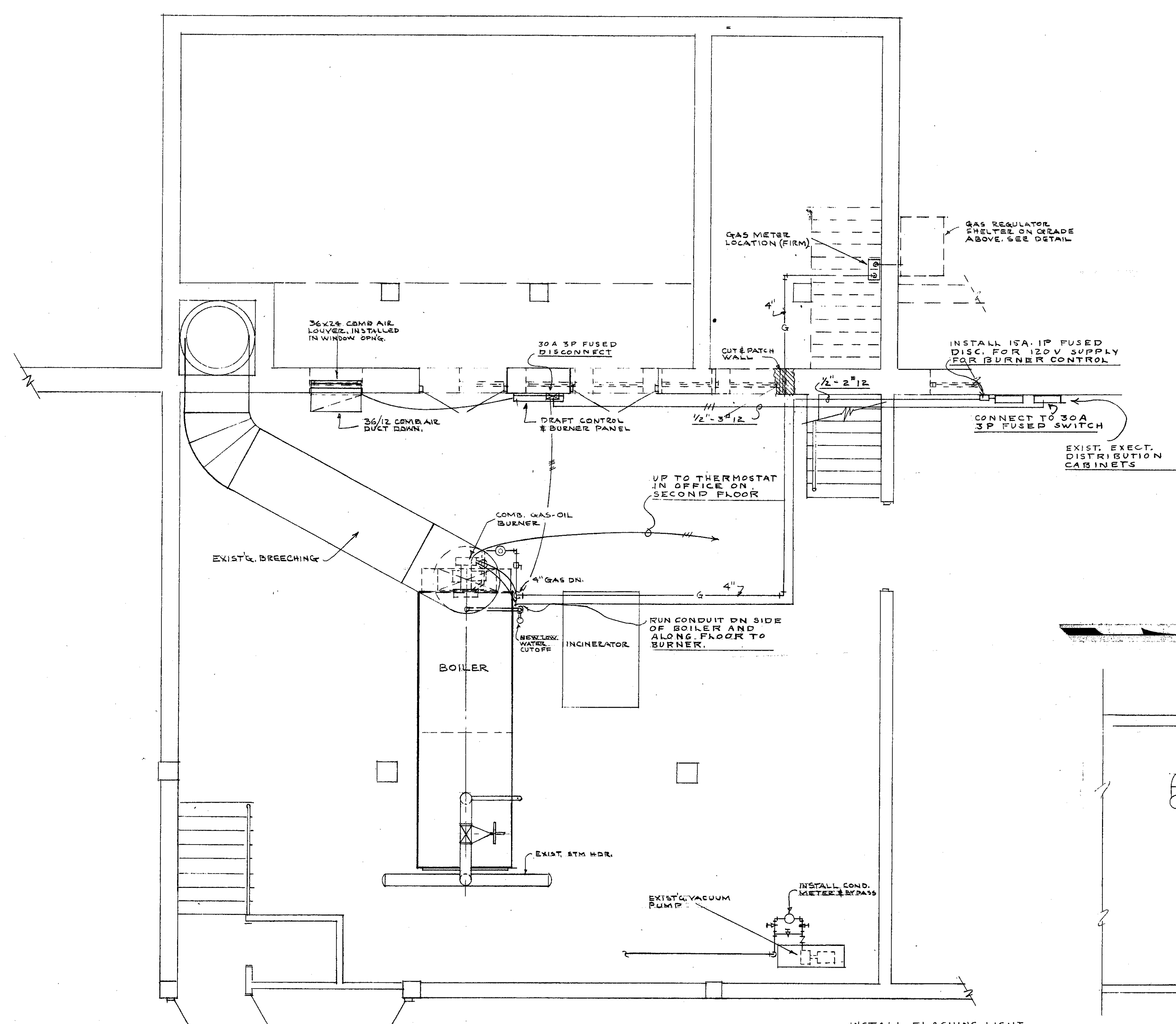
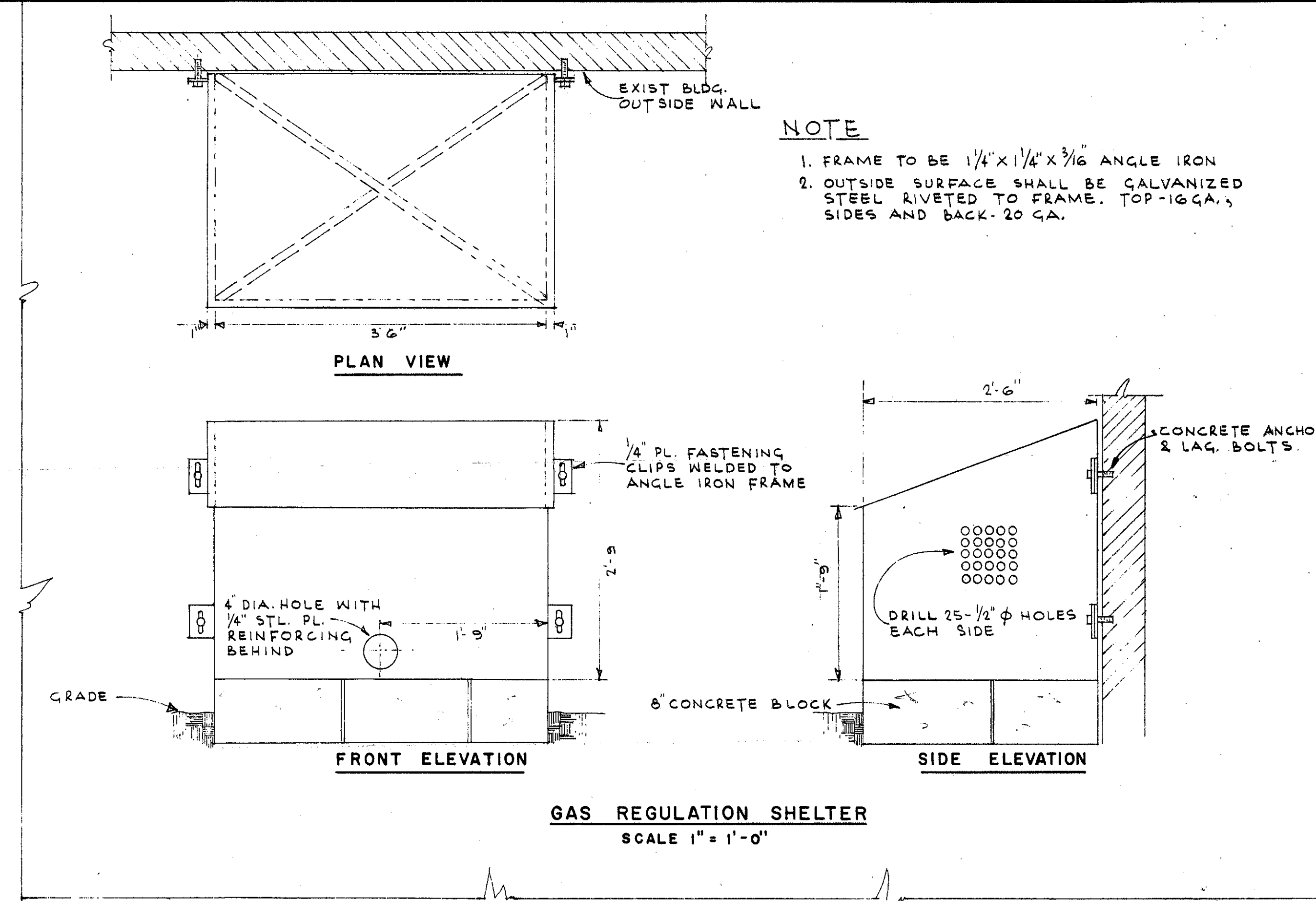


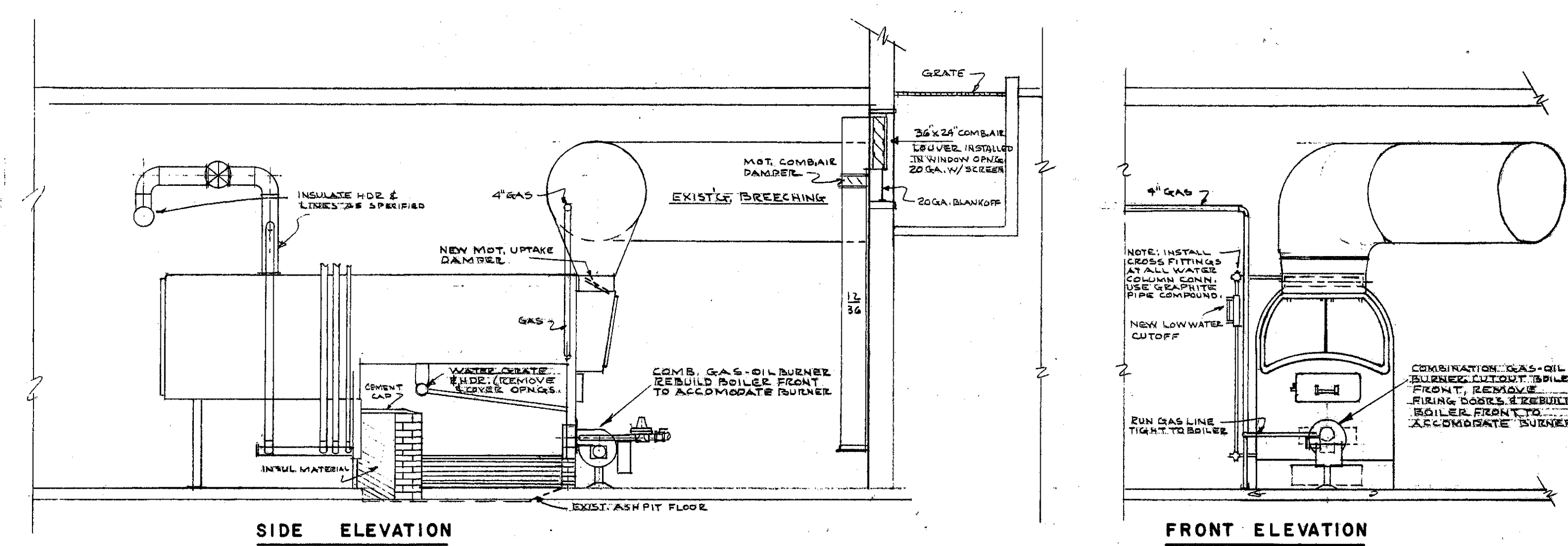
Appendix C
Drawings Item 'ii'
1959 Mechanical Boiler Room



PART BASEMENT FLOOR PLAN
SCALE 1/4" = 1'-0"

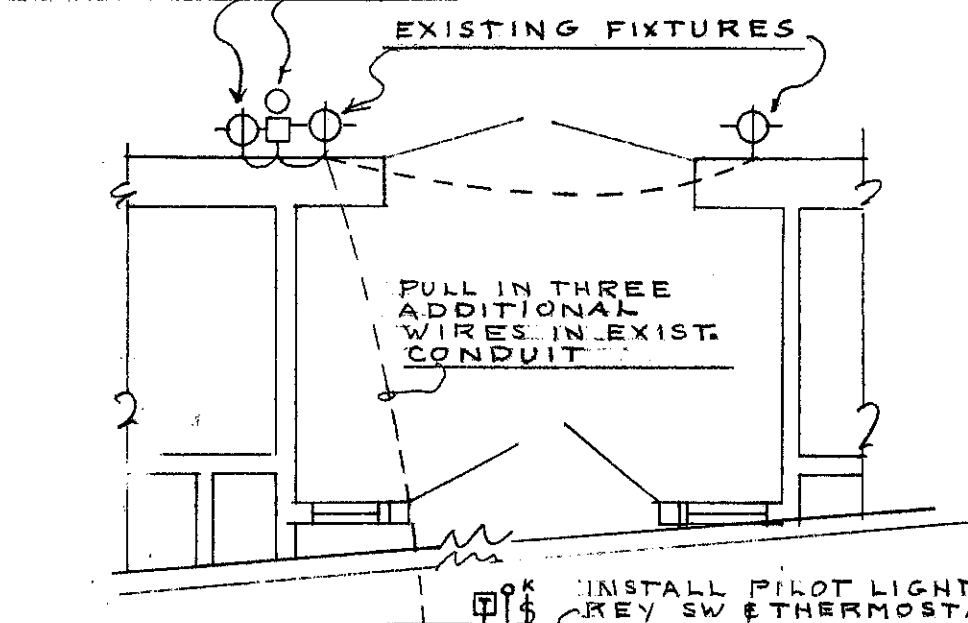


GAS REGULATION SHELTER
SCALE 1" = 1'-0"

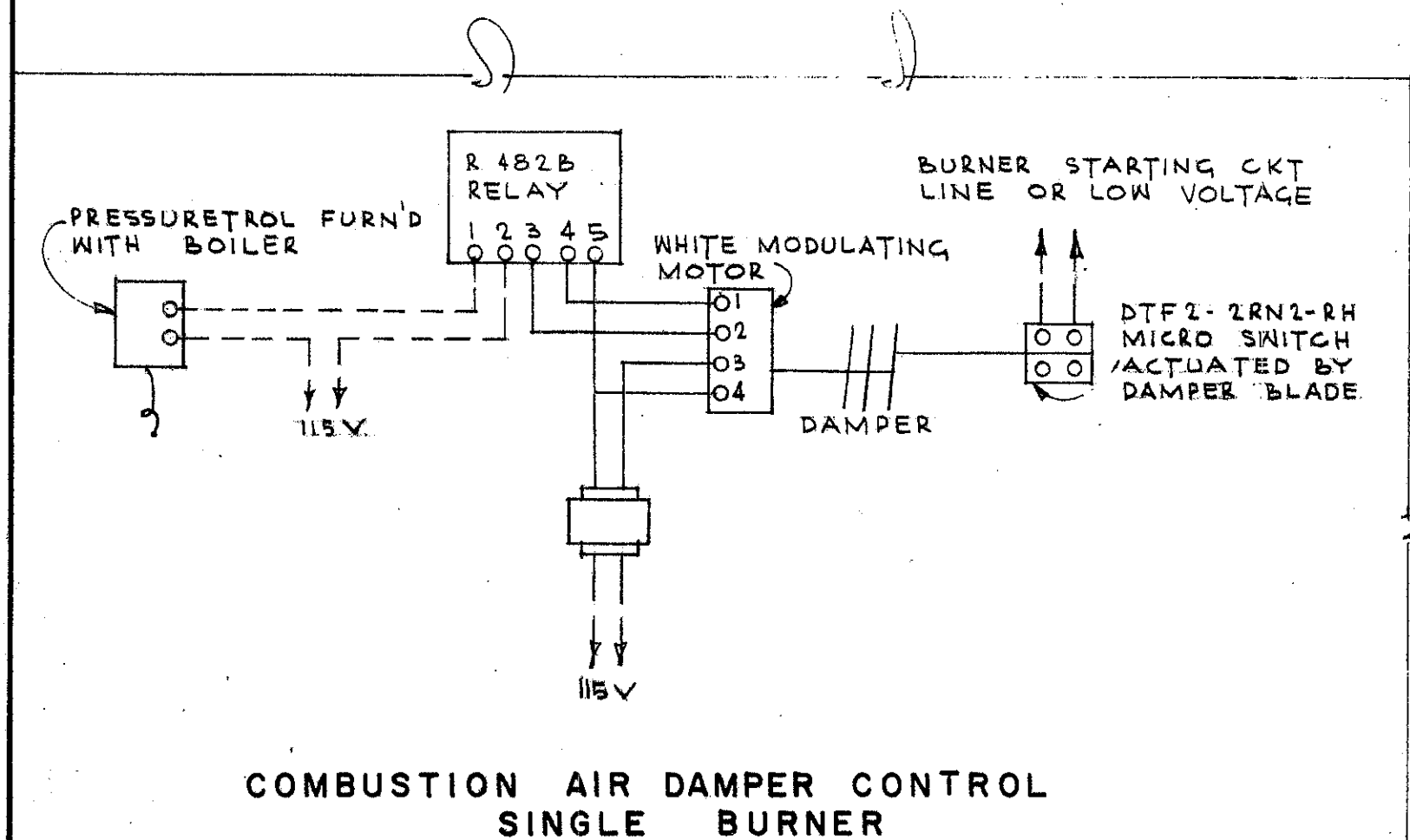


BOILER DETAIL
SCALE 1/4" = 1'-0"

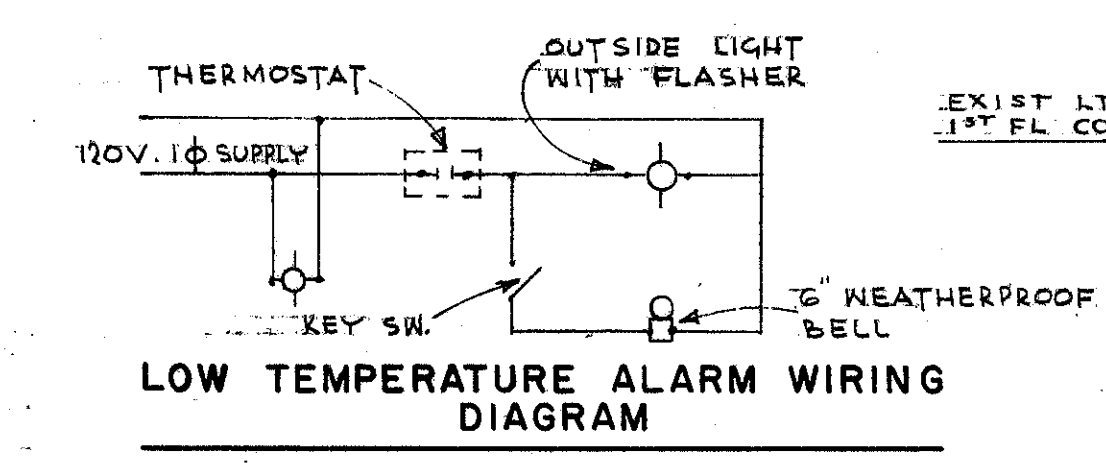
INSTALL FLASHING LIGHT AND BELL DIRECTLY ABOVE EXISTING FIXTURE



LOW TEMPERATURE ALARM NORTH ENTRANCE
SCALE 1/4" = 1'-0"



COMBUSTION AIR DAMPER CONTROL SINGLE BURNER



LOW TEMPERATURE ALARM WIRING DIAGRAM

NOTE
1. FRAME TO BE 1/4" x 1/4" x 3/16" ANGLE IRON
2. OUTSIDE SURFACE SHALL BE GALVANIZED STEEL RIVETED TO FRAME. TOP-16 GA., SIDES AND BACK-20 GA.

I hereby certify that this plan, specification, or report was prepared by me or under my direct supervision and that I am a duly Registered Professional Engineer under the laws of the State of Minnesota. <i>John V. Erickson</i> Date JULY 16, 1959 Reg. No. 3448			
MECHANICAL BOILER ROOM & DETAILS REVISIONS TO HEATING PLANT RIVERSIDE ELEMENTARY SCHOOL ST. PAUL, MINNESOTA			
JOB 325	L.E.N.	JULY 16, 1959	SHEET
BOARD OF EDUCATION ST PAUL PUBLIC SCHOOLS ST PAUL, MINNESOTA	ERICKSEN ELLISON AND ASSOCIATES INC. CONSULTING ENGINEERS ST PAUL 16, MINNESOTA	MI	
			QF-1