

Saint Paul Public Schools Facilities Master Planning for 21st Century Learning



Facility Master Plan Committee:
Workshop #5: District Parameters



Vision Statement:

Imagine every student inspired, challenged, and cared for by exceptional educators.

Imagine your family welcomed, respected and valued by exceptional schools.

Imagine our community united, strengthened, and prepared for an exceptional future.

Saint Paul Public Schools:
Where imagination meets destination.

Mission Statement:

To provide a premier education for all.

District-at-a-Glance

Minnesota's **largest urban** school district with **39,000+** students in Pre Kindergarten -12th grade

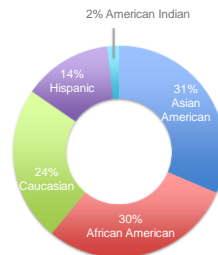
served by
85 schools/programs
5,376 full-time staff

in
71 buildings & 3 leased sites

totaling
7.3 million square feet
and 465 acres of land



District-at-a-Glance



- Students speak **100+ languages** and dialects
- **4,000*** students new to SPPS each year; 2,000* at the secondary level
- **17%** of students require **special education** services
- **73%** of students eligible for **free or reduced-price lunch**
- **2,000*** students experience **homelessness** during the school year

*Approximate numbers



FMP Committee Workshops



Workshop #1...May 29th
Creating a shared vision.

Workshop #2...June 19th
Where we are.

Workshop #3...July 10th
Facility Principles.



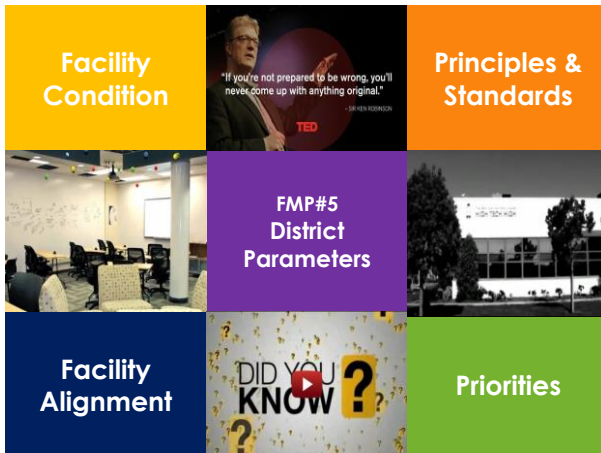
FMP Committee Workshops



Workshop #4...Sept 18th
Facility Standards.

Workshop #5...Today
District Parameters.

Workshop #6...January 23rd
District wide Options.



DESIGN WITH, NOT FOR.

welcome to the design team!



FMP – Design Thinking Ground Rules

RELAX AND ALLOW. Constant self monitoring will get in the way of group performance.

SPEAK YOUR TRUTH



FMP – Design Thinking Ground Rules

DON'T WORRY ABOUT WHO GETS CREDIT. When everyone genuinely collaborates, everyone ends up being more creative.

STAY ENGAGED



FMP – Design Thinking Ground Rules

CLARITY IS NOT A VIRTUE. If everything you say is detailed and explicit, you won't give your collaborators room to run.

ACCEPT / EXPECT NON-CLOSURE



FMP – Design Thinking Ground Rules

CREATIVITY IS RISKY. Put yourself in an environment that rewards failure. Successful creative teams are also the ones who fail the most often.

EXPERIENCE DISCOMFORT



SUGGESTED GROUND RULES

BE WHO YOU ARE AND SAY
WHAT YOU FEEL BECAUSE
THOSE WHO MIND DON'T
MATTER AND THOSE WHO
MATTER DON'T MIND.

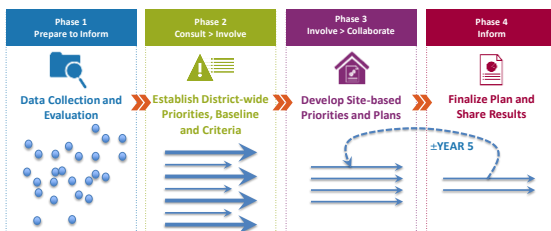
- DR. SEUSS



Facilities Master Plan - Planning Process May 2014 – December 2015



Design as Iterative Process



Master Planning Philosophy

Master Planning has both technical and adaptive challenges; our process seeks to address each by:

- **Technical Challenges**
Identify experts and known industry solutions; share their information in appropriate forums and methods
- **Adaptive Challenges**
Convene representative stakeholders to understand the systemic issues in play and collaboratively design a solution that incorporates community values and priorities



Phase 2: Facilities Master Plan Committee



- 5th of 6 workshops since May
- Outcomes – guiding documents:
 - Vision
 - Principles
 - Standards

All workshop presentations, meeting notes, and videos are posted online at

<http://facilities.spps.org/committees>

In particular, the district data and information from the Workshop 2 “Where we are” presentation are posted on this web page



FACILITIES VISION STATEMENT

We envision versatile, equitable, healthy environments that balance the factors creating authentic, engaging, and personalized learning experiences to sustain our academic mission and deepen connections to our communities and world.



Givens

- Kids and academics are at the center of the conversation
- Strong Schools Strong Communities 2.0
- Courageous Conversations Protocol & Racial Equity
- Grade Configurations Remain
- Attendance Boundaries – community schools with magnet options
- Strong Emphasis on Early Childhood
- Inclusion
- Safety & Security
- Community Use & Community Ed
- Sustainability



Principles & Standards

Facility Principles

Strong Schools, Strong Communities 2.0 goals:

Goal 1: Achievement

Goal 2: Alignment

Goal 3: Sustainability



Facility Principles | Goal 1: Achievement

- Foster personalized learning and collaboration
- Support college and career readiness
- Support authentic and experiential learning
- Flexible, adaptable learning environments
- Adaptable to respond to future technologies



Facility Principles | Goal 2: Alignment

- Support access and equity for all
- Used by, reflect and connect to the community and neighborhoods
- Foster partnerships and community connections
- Support connectivity to natural environment, outdoors



Facility Principles | Goal 3: Sustainability

- Excellence in design, construction of facilities, grounds
- Utilizing sustainable principles in siting, design, operations
- Minimizing facilities' impact on environment
- Environments support, promote health and safety and balance emergency preparedness with all Facility Principles

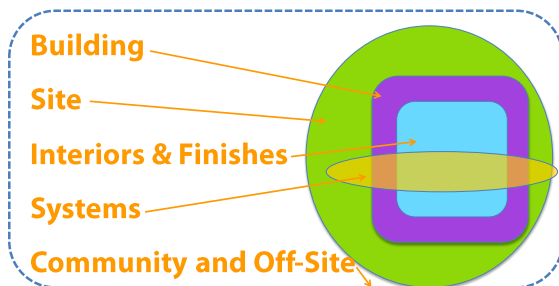


Facility Standards

- Criteria that describe the physical characteristics required of all Saint Paul Public Schools facilities
- Define consistency, value and quality across SPPS facilities as they are maintained, improved or built.



Facility Design Standards “Zones of Work”



Facilities Standards

Building	Site	Systems
1. General Learning Space	28. Safe and Accessible	41. Quality HVAC/Plumbing
2. Varied Space	29. Traffic Control	42. Ample Electrical Service and Systems
3. Student Gathering Space	30. Parking and Service Access	43. Technology Infrastructure and Hardware
4. Assembly Space	31. Landscape Character	44. Technologically Enhanced Systems
5. Interdisciplinary Learning	32. Safe Outdoor Play	
6. Specialized Lab/Studio Space	33. Outdoor Learning Settings	
7. Shared Space	34. Planned Expansion	
8. Specialized Services Needs	35. Permanent Facilities	
9. PK, K and Early Childhood (0-3) Space		
10. Personalized Learning Space		
11. Space for Enriching Activities		
12. Staff Resource and Collaboration Space		
13. Adult Learning Space		
14. Daylighting and Views		
15. Accessibility		
16. Community Services Centers		
17. Safety		
18. Clear Main Entry		
19. Welcoming and Respectful Main Office		
20. Health Services Space		
21. Facilities for Media Centers		
22. Food Service		
23. District Administration		
24. Technology Space		
25. Storage Space		
26. Plumbing Core		
27. Building and Energy Codes		
	Interiors and Finishes	Community / Off-Site
	36. Flexible/Adaptable Space	45. Community/Off-Site Learning Settings
	37. Appropriately-Scaled Space	46. Joint-Use Facilities
	38. Signage and Display	47. Connections between School Sites
	39. Experiential Interiors	48. Transportation
	40. Furniture and Finishes for Learning	



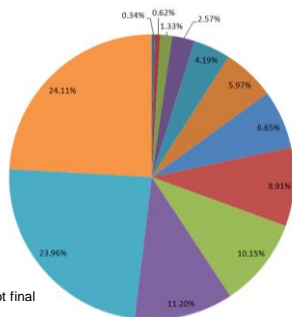
Facilities Data – The Foundation

- Facilities Condition Assessment (FCA)
- Educational Adequacy Assessment (EAA)
- Facilities Alignment Analysis (FAA)

Facility Condition



System Deficiencies

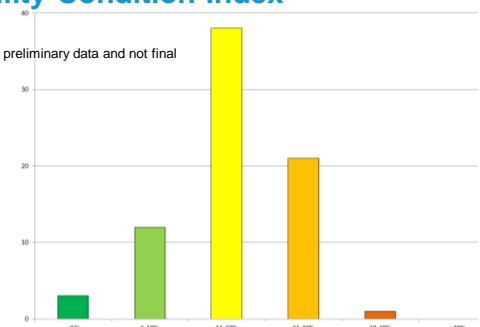


Note: This is preliminary data and not final



Facility Condition Index

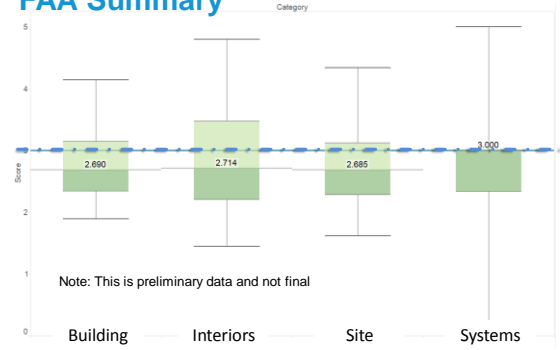
Note: This is preliminary data and not final



Facility Alignment



FAA Summary



Prompts to Action

Facilities improvements typically fall into a few categories:

- Functional Necessity [FCA]
 - System life cycle replacement
- Programmatic Changes [FAA]
 - Enrollment changes (growth, decline)
 - Educational changes (e.g. all day Pre-K)
- Targeted Improvements [Priorities]
 - E.g. Accessibility, safety, etc
 - Equity?



Building Construction Funding

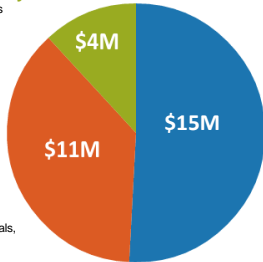
\$30M Annually (approx)

Health & Safety Levy

- Health & Safety Projects
- Restricted Funding
- MDE Approval
- Planned in 1-year intervals, 18-mos prior

Alternative Facilities Levy

- Deferred Maintenance
- Restricted Funding
- MDE Approval
- Planned in 2-year intervals, 12-mos prior
- 10-year list required



Capital Bonds

- Betterment of School Facilities
- Restricted Funding
- BOE Approval
- MDE Approval if combined into projects over \$500k
- Planned in 1-year intervals, 18-mos prior



Long Range Enrollment Projections

Current Model:

- 1 Year
- “Cohort Survival” Method

New Model:

- 10 Years
- “Cohort Survival” & “Housing Unit” Methods



Thank you!

