

Saint Paul Public Schools

Facilities Master Planning for 21st Century Learning



**Facility Master Plan Committee:
Workshop #5: District Parameters**





Vision Statement:

Imagine every student inspired, challenged, and cared for by exceptional educators.

Imagine your family welcomed, respected and valued by exceptional schools.

Imagine our community united, strengthened, and prepared for an exceptional future.

Saint Paul Public Schools:
Where imagination meets destination.

Mission Statement:

To provide a premier education for all.

District-at-a-Glance

Minnesota's **largest urban** school district with **39,000+** students
in Pre Kindergarten -12th grade

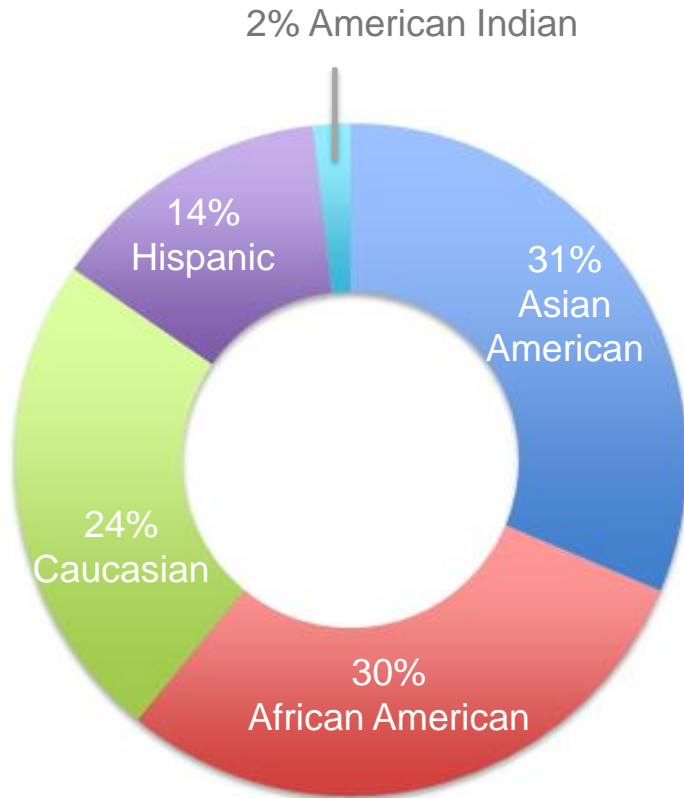
served by
85 schools/programs
5,376 full-time staff

in
71 buildings & 3 leased sites

totaling
7.3 million square feet
and 465 acres of land



District-at-a-Glance



- Students speak **100+ languages** and dialects
- **4,000*** students new to SPPS each year; 2,000* at the secondary level
- **17%** of students require **special education** services
- **73%** of students eligible for **free or reduced-price lunch**
- **2,000*** students experience **homelessness** during the school year

*Approximate numbers





Workshop #1...May 29th

Creating a shared vision.

Workshop #2...June 19th

Where we are.

Workshop #3...July 10th

Facility Principles.



Workshop #4...Sept 18th

Facility Standards.

Workshop #5...Today

District Parameters.

Workshop #6...January 23rd

District wide Options.

Facility Condition

"If you're not prepared to be wrong, you'll
never come up with anything original."

— SIR KEN ROBINSON

TED

Principles & Standards



FMP#5 District Parameters



Facility Alignment



Priorities

DESIGN WITH, NOT FOR.

welcome to the design team!

FMP – Design Thinking Ground Rules

RELAX AND ALLOW. Constant self monitoring will get in the way of group performance.

SPEAK YOUR TRUTH



FMP – Design Thinking Ground Rules

**DON'T WORRY ABOUT WHO
GETS CREDIT.**

**When everyone
genuinely collaborates, everyone ends up
being more creative.**

STAY ENGAGED



FMP – Design Thinking Ground Rules

CLARITY IS NOT A VIRTUE. If everything you say is detailed and explicit, you won't give your collaborators room to run.

ACCEPT / EXPECT NON-CLOSURE



FMP – Design Thinking Ground Rules

CREATIVITY IS RISKY. Put yourself in an environment that rewards failure. Successful creative teams are also the ones who fail the most often.

EXPERIENCE DISCOMFORT

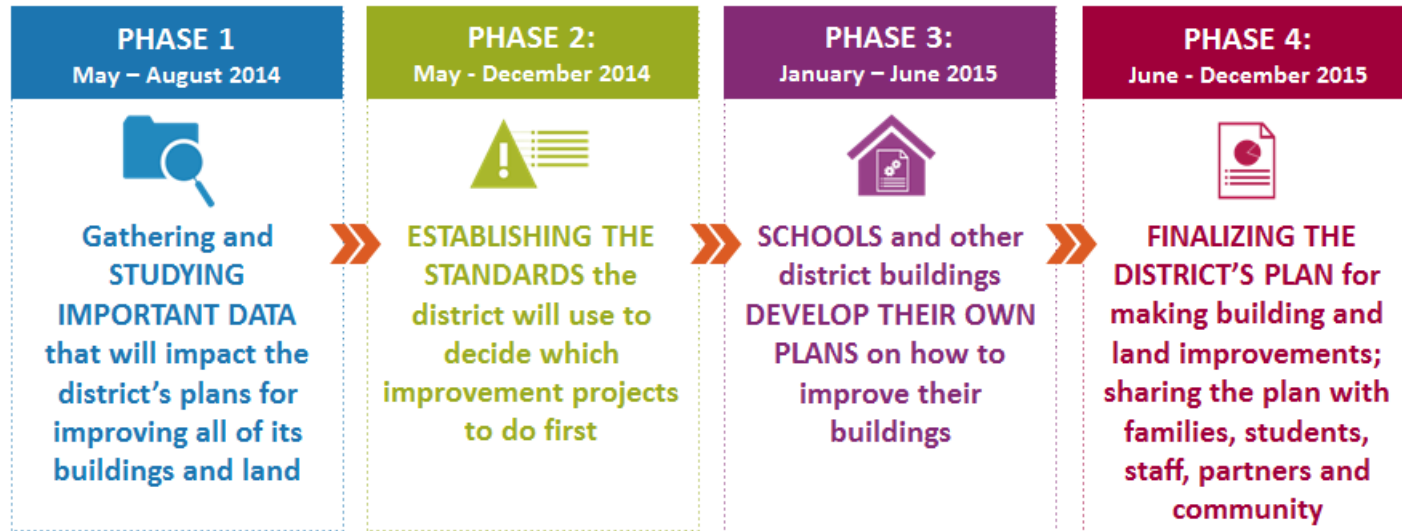


**BE WHO YOU ARE AND SAY
WHAT YOU FEEL BECAUSE
THOSE WHO MIND DON'T
MATTER AND THOSE WHO
MATTER DON'T MIND.**

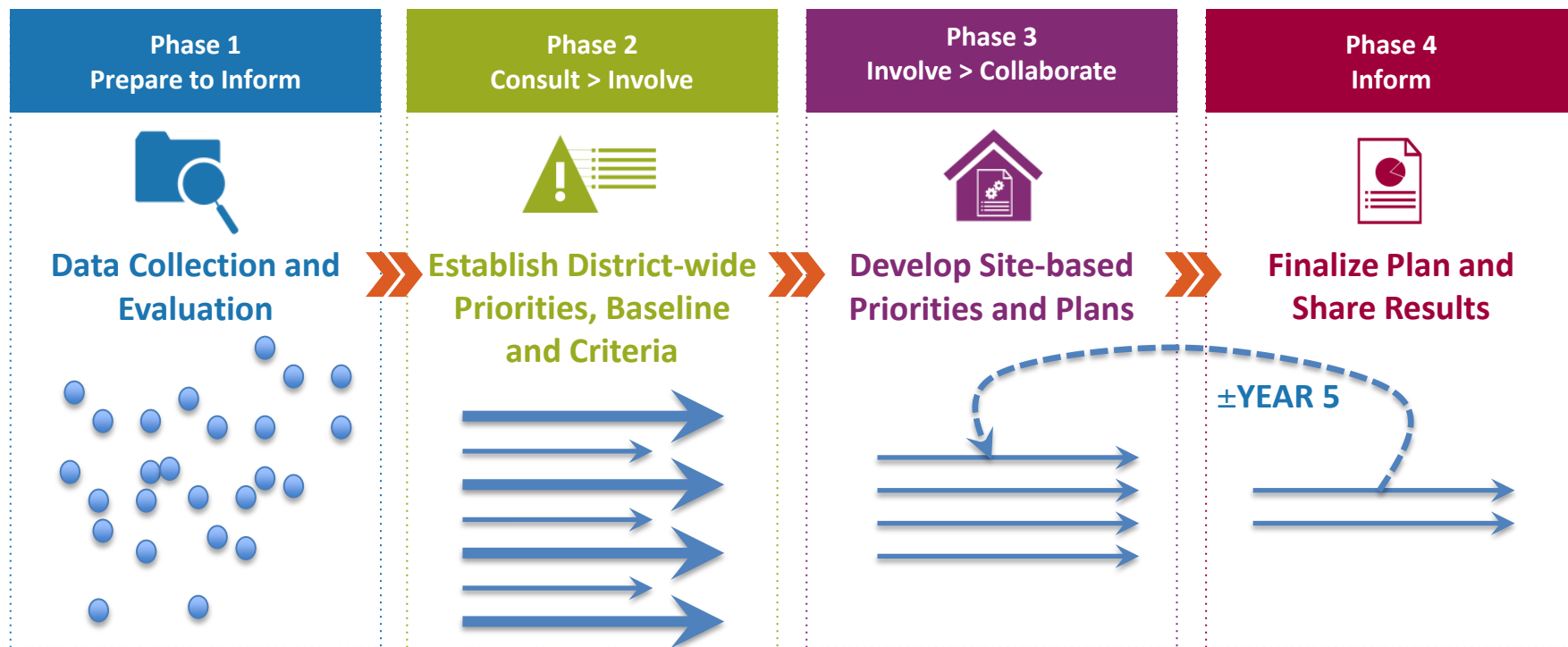
- DR. SEUSS

Facilities Master Plan - Planning Process

May 2014 – December 2015



Design as Iterative Process



Master Planning Philosophy

Master Planning has both technical and adaptive challenges; our process seeks to address each by:

- **Technical Challenges**

Identify experts and known industry solutions; share their information in appropriate forums and methods

- **Adaptive Challenges**

Convene representative stakeholders to understand the systemic issues in play and collaboratively design a solution that incorporates community values and priorities



Phase 2: Facilities Master Plan Committee



- 5th of 6 workshops since May
- Outcomes – guiding documents:
 - Vision
 - Principles
 - Standards



All workshop presentations, meeting notes,
and videos are posted online at

<http://facilities.spps.org/committees>

In particular, the district data and information
from the Workshop 2 “Where we are”
presentation are posted on this web page



FACILITIES VISION STATEMENT

We envision versatile, equitable, healthy environments that balance the factors creating authentic, engaging, and personalized learning experiences to sustain our academic mission and deepen connections to our communities and world.



Givens

- Kids and academics are at the center of the conversation
- Strong Schools Strong Communities 2.0
- Courageous Conversations Protocol & Racial Equity
- Grade Configurations Remain
- Attendance Boundaries – community schools with magnet options
- Strong Emphasis on Early Childhood
- Inclusion
- Safety & Security
- Community Use & Community Ed
- Sustainability



Principles & Standards



Facility Principles

Strong Schools, Strong Communities 2.0 goals:

Goal 1: Achievement

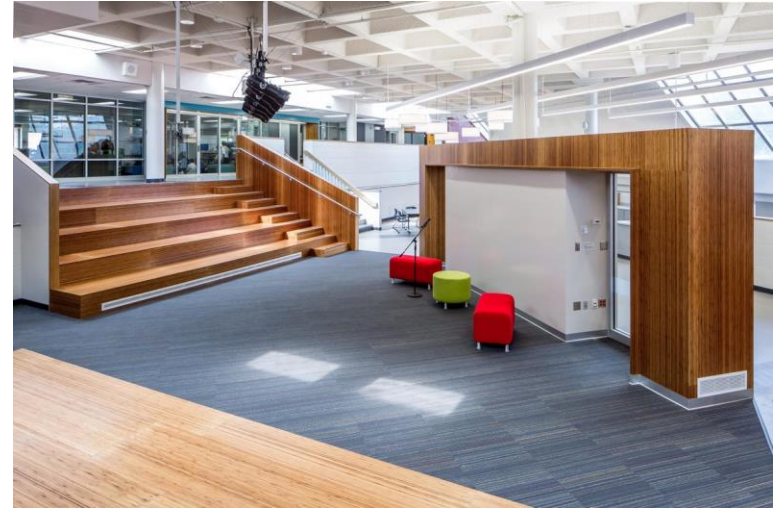
Goal 2: Alignment

Goal 3: Sustainability



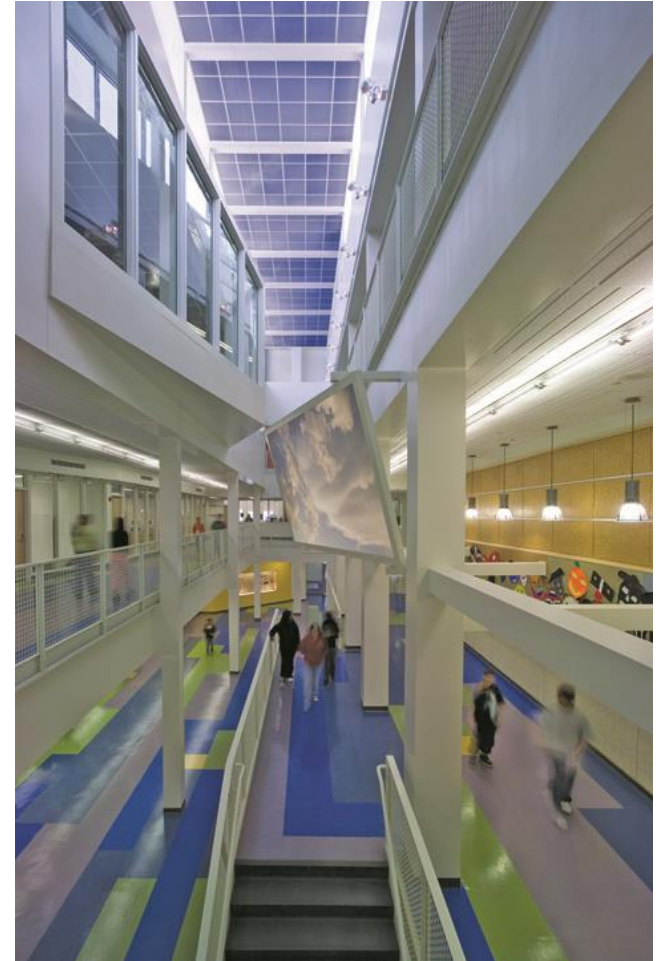
Facility Principles | Goal 1: Achievement

- Foster personalized learning and collaboration
- Support college and career readiness
- Support authentic and experiential learning
- Flexible, adaptable learning environments
- Adaptable to respond to future technologies



Facility Principles | Goal 2: Alignment

- Support access and equity for all
- Used by, reflect and connect to the community and neighborhoods
- Foster partnerships and community connections
- Support connectivity to natural environment, outdoors



Facility Principles | Goal 3: Sustainability

- Excellence in design, construction of facilities, grounds
- Utilizing sustainable principles in siting, design, operations
- Minimizing facilities' impact on environment
- Environments support, promote health and safety and balance emergency preparedness with all Facility Principles



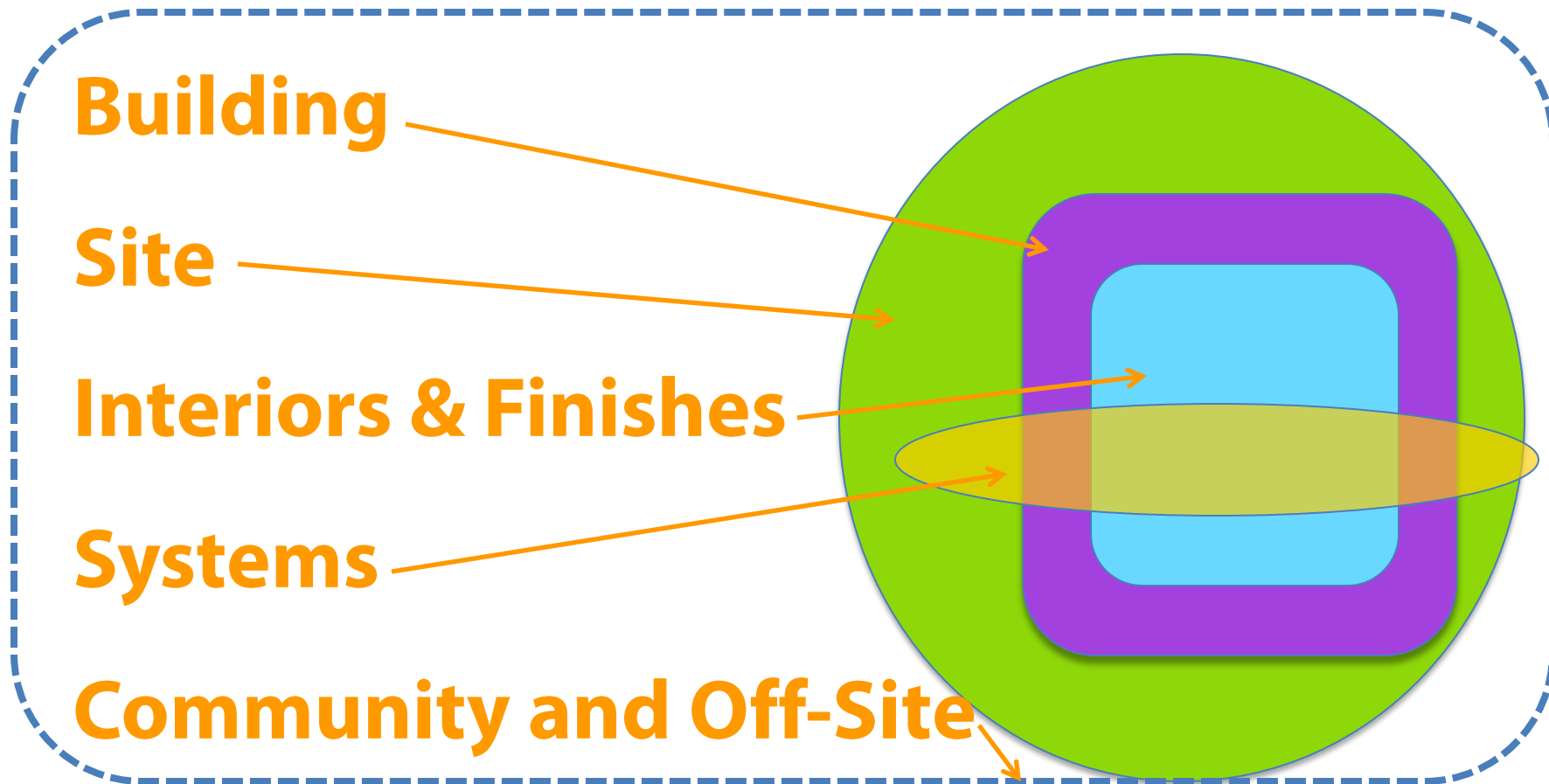
Facility Standards

- Criteria that describe the physical characteristics required of all Saint Paul Public Schools facilities
- Define consistency, value and quality across SPPS facilities as they are maintained, improved or built.



Facility Design Standards

“Zones of Work”



Facilities Standards

Building

1. General Learning Space
2. Varied Space
3. Student Gathering Space
4. Assembly Space
5. Interdisciplinary Learning
6. Specialized Lab/Studio Space
7. Shared Space
8. Specialized Services Needs
9. PK, K and Early Childhood (0-3) Space
10. Personalized Learning Space
11. Space for Enriching Activities
12. Staff Resource and Collaboration Space
13. Adult Learning Space
14. Daylighting and Views
15. Accessibility
16. Community Services Centers
17. Safety
18. Clear Main Entry
19. Welcoming and Respectful Main Office
20. Health Services Space
21. Facilities for Media Centers
22. Food Service
23. District Administration
24. Technology Space
25. Storage Space
26. Plumbing Core
27. Building and Energy Codes

Site

28. Safe and Accessible
29. Traffic Control
30. Parking and Service Access
31. Landscape Character
32. Safe Outdoor Play
33. Outdoor Learning Settings
34. Planned Expansion
35. Permanent Facilities

Interiors and Finishes

36. Flexible/Adaptable Space
37. Appropriately-Scaled Space
38. Signage and Display
39. Experiential Interiors
40. Furniture and Finishes for Learning

Systems

41. Quality HVAC/Plumbing
42. Ample Electrical Service and Systems
43. Technology Infrastructure and Hardware
44. Technologically Enhanced Systems

Community / Off-Site

45. Community/Off-Site Learning Settings
46. Joint-Use Facilities
47. Connections between School Sites
48. Transportation



Facilities Data – The Foundation

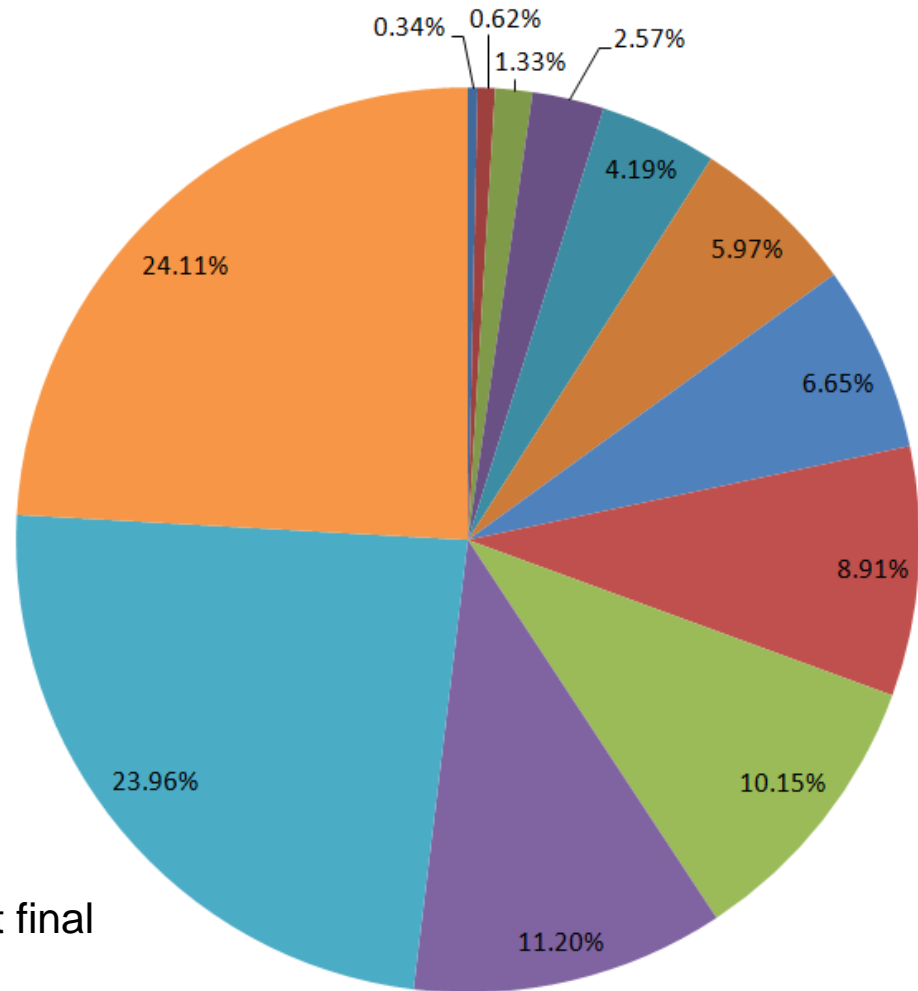
- Facilities Condition Assessment (FCA)
- Educational Adequacy Assessment (EAA)
- Facilities Alignment Analysis (FAA)



Facility Condition



System Deficiencies

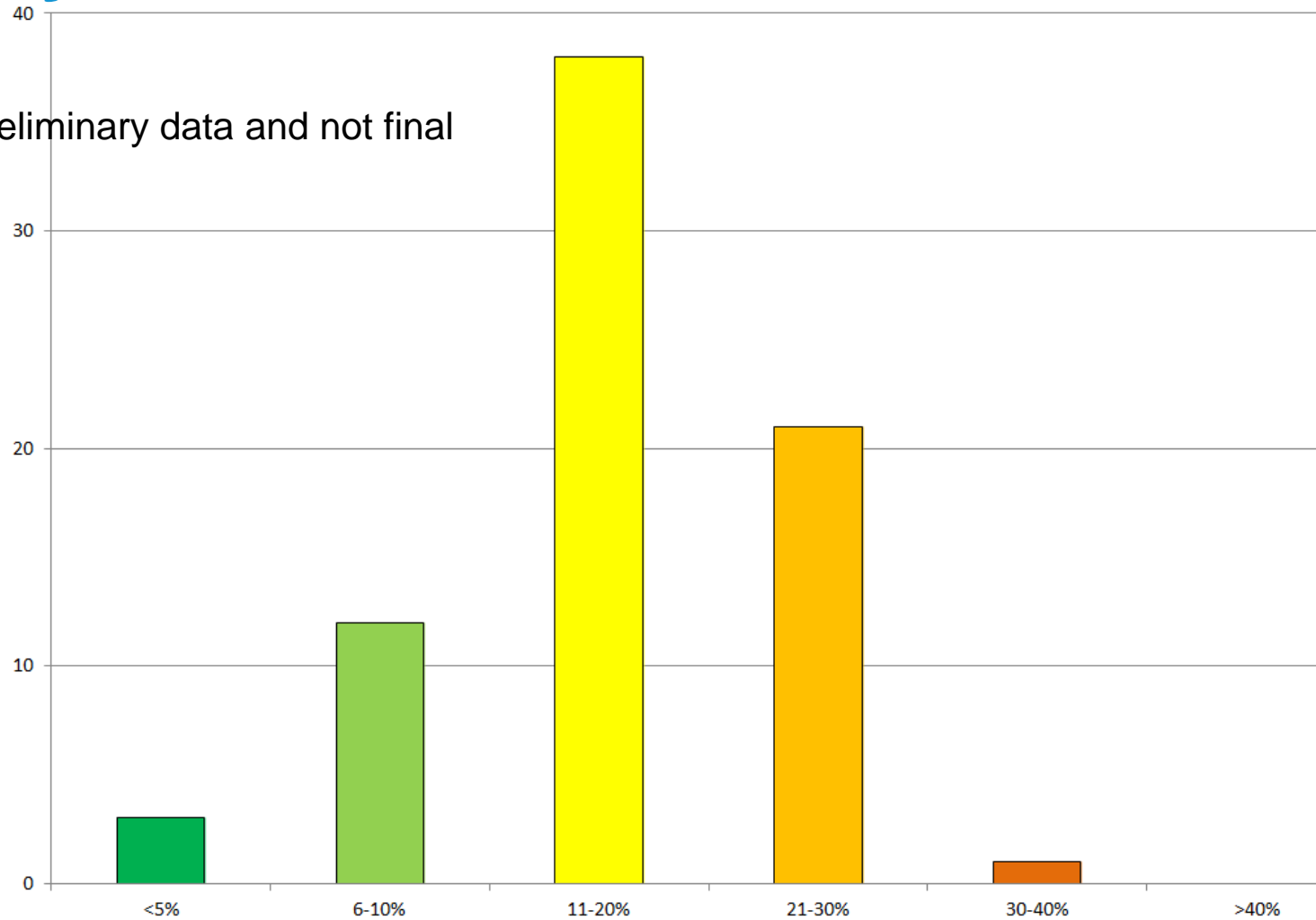


Note: This is preliminary data and not final

■ Structural ■ Technology ■ Stairs and Elevators ■ Fire and Life Safety ■ Exterior ■ Roofing
 ■ Specialties ■ Electrical ■ Site ■ Plumbing ■ Interior ■ Mechanical

Facility Condition Index

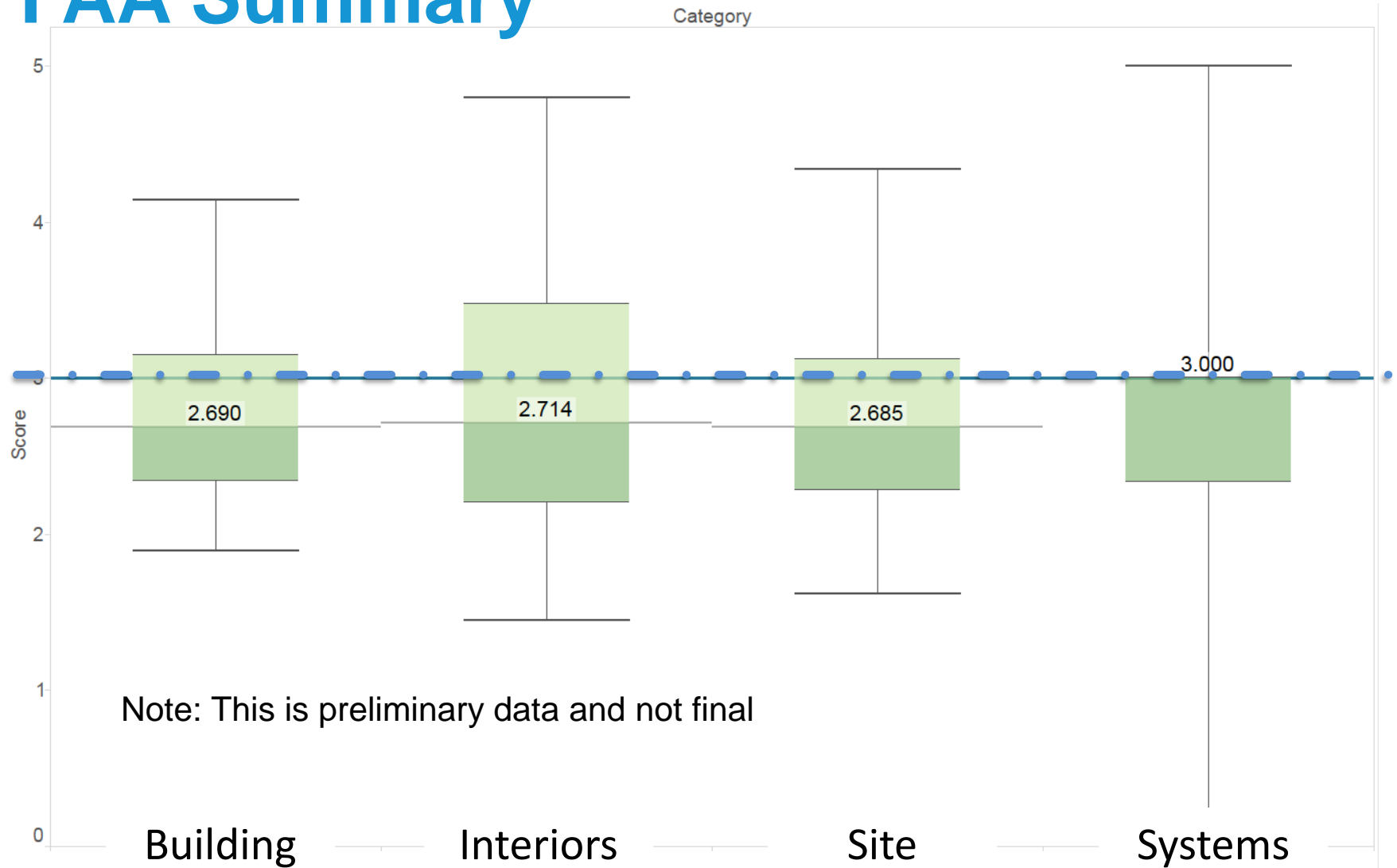
Note: This is preliminary data and not final



Facility Alignment



FAA Summary



Priorities



Prompts to Action

Facilities improvements typically fall into a few categories:

- Functional Necessity [FCA]
 - System life cycle replacement
- Programmatic Changes [FAA]
 - Enrollment changes (growth, decline)
 - Educational changes (e.g. all day Pre-K)
- Targeted Improvements [Priorities]
 - E.g. Accessibility, safety, etc
 - Equity?



Building Construction Funding

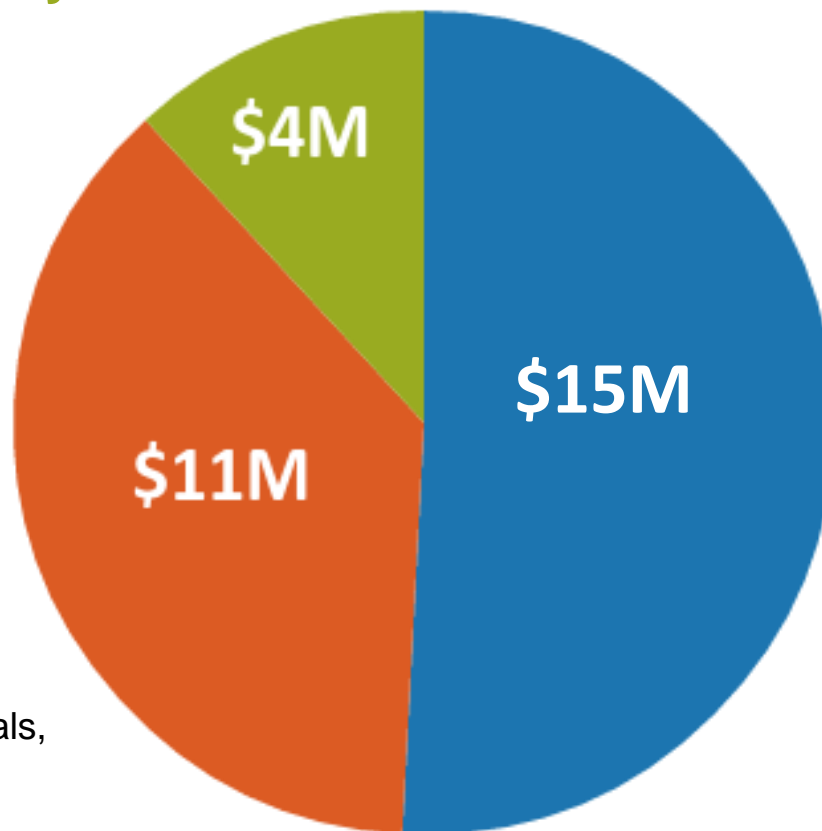
\$30M Annually (approx)

Health & Safety Levy

- Health & Safety Projects
- Restricted Funding
- MDE Approval
- Planned in 1-year intervals, 18-mos prior

Alternative Facilities Levy

- Deferred Maintenance
- Restricted Funding
- MDE Approval
- Planned in 2-year intervals, 12-mos prior
- 10-year list required



Capital Bonds

- Betterment of School Facilities
- Restricted Funding
- BOE Approval
- MDE Approval if combined into projects over \$500k
- Planned in 1-year intervals, 18-mos prior



Long Range Enrollment Projections

Current Model:

- 1 Year
- “Cohort Survival” Method

New Model:

- 10 Years
- “Cohort Survival” & “Housing Unit” Methods



Thank you!

