

Saint Paul Public Schools

Facilities Master Planning for 21st Century Learning

TABLE OF CONTENTS

- [District map with site acreage](#)
- [Facilities Master Plan – planning process](#)
- [Workshop dates and themes](#)
- [Workshop purpose](#)
- [Highest hopes](#)
- [Givens](#)
- [Creating a shared vision](#)
- [“We see...”](#)
- [Draft vision statement](#)
- [Saint Paul Public Schools - Who do we serve and what are our goals?](#)
- [Demographics](#)
- [Strong Schools, Strong Communities 2.0](#)
- [Academic Services](#)
- [Athletics](#)
- [Community Education](#)
- [Support Services](#)



Saint Paul Public Schools

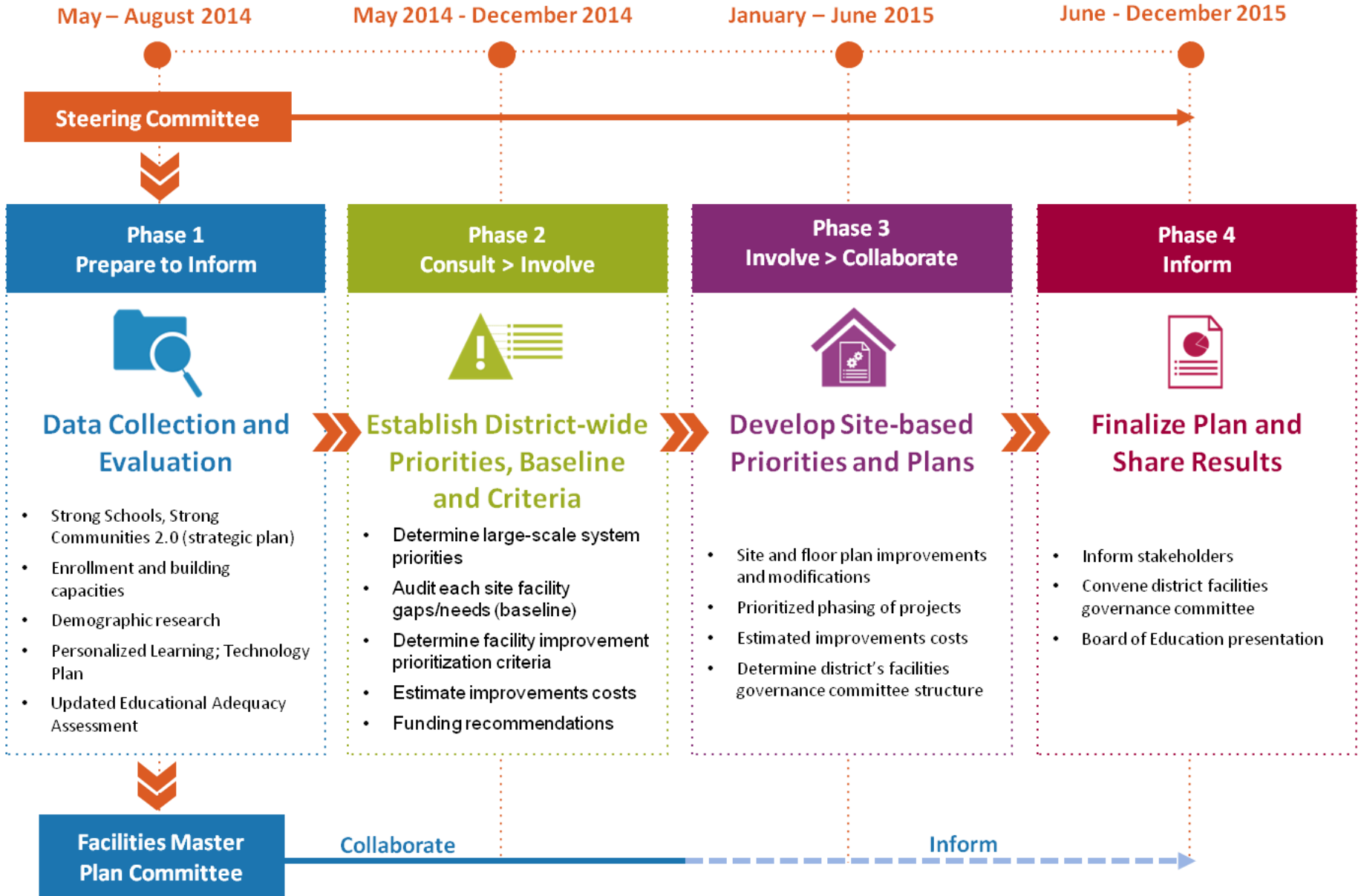
Facilities Master Planning for 21st Century Learning



Facility Master Plan Committee: Workshop #2: Where We Are



Facilities Master Plan - Planning Process





Workshop #1...May 29th

Creating a shared vision.

Workshop #2...TODAY

Where we are.

Workshop #3...July 10th

Facility Principles.

Workshop #4...Sept 18th

Facility Standards.

Workshop #5...Oct 9th

District Parameters.

Workshop #6...Nov 20th

District wide Options.



FMP WORKSHOPS

A creative working process that promotes collaboration among all of the key stakeholders and which utilizes facilitated discussion to openly and effectively share design thinking to make great decisions.

DESIGN WITH, NOT FOR.

welcome to the design team!

IT IS NOT BECAUSE
THINGS ARE DIFFICULT
THAT WE DO NOT DARE.

IT IS BECAUSE WE
DO NOT DARE THAT
THEY ARE DIFFICULT.

SENECA, ROMAN PHILOSOPHER & POLITICIAN

PURPOSE

To create a Common
Ground that will help
inform the SPPS Facility
Master Plan

RELAX AND ALLOW. Constant self monitoring will get in the way of group performance. Let go...

DON'T WORRY ABOUT WHO GETS CREDIT.

When everyone genuinely collaborates, everyone ends up being more creative. (SEEK THE COMMON GROUND)

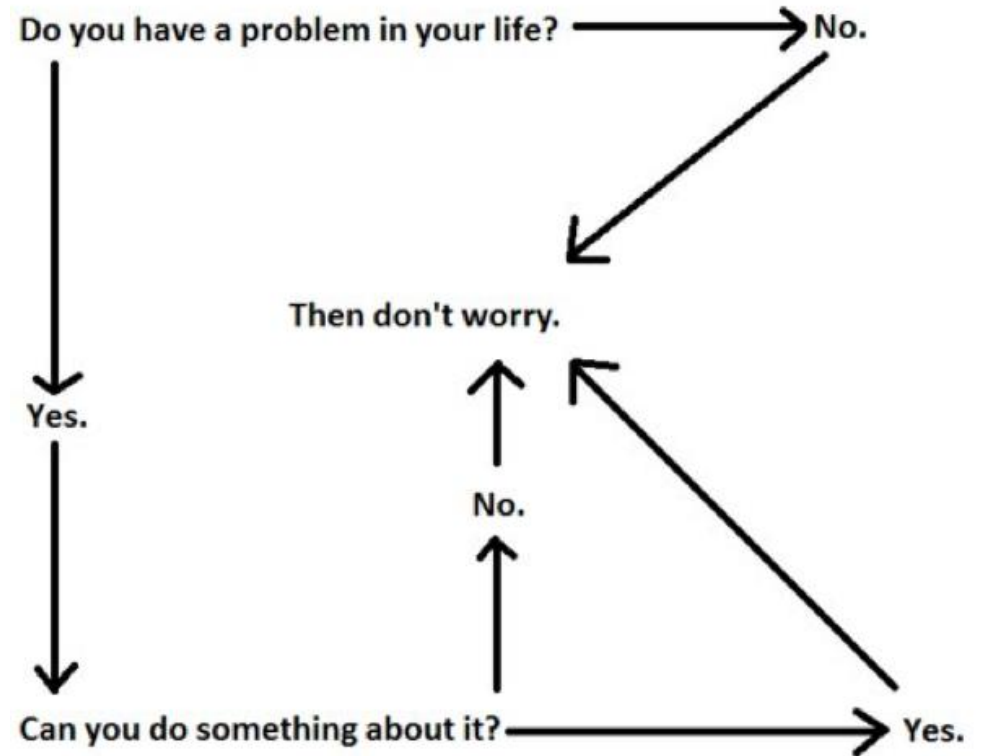
CLARITY IS NOT A VIRTUE. If everything you say is detailed and explicit, you won't give your collaborators room to run. Put ideas out there that are half-baked.

CREATIVITY IS RISKY. Put yourself in an environment that rewards failure. Successful creative teams are also the ones who fail the most often.

**BE WHO YOU ARE AND SAY
WHAT YOU FEEL BECAUSE
THOSE WHO MIND DON'T
MATTER AND THOSE WHO
MATTER DON'T MIND.**

- DR. SEUSS

DON'T WORRY
HAVE FUN!



BEYOND 21st C. LEARNING



"If you're not prepared to be wrong, you'll never come up with anything original."

— SIR KEN ROBINSON

TED

FORCES OF CHANGE



PRE- CONCEPTIONS



WHAT'S CHANGING



I SEE... WE SEE

Highest Hopes



CUNNINGHAM
G R O U P

Givens

- Kids and academics are at the center of the conversation
- Strong Schools Strong Communities 2.0
- Courageous Conversations Protocol & Racial Equity
- Grade Configurations Remain
- Attendance Boundaries – community schools with magnet options
- Strong Emphasis on Early Childhood
- Inclusion
- Safety & Security
- Community Use & Community Ed
- Sustainability



CREATING A SHARED VISION

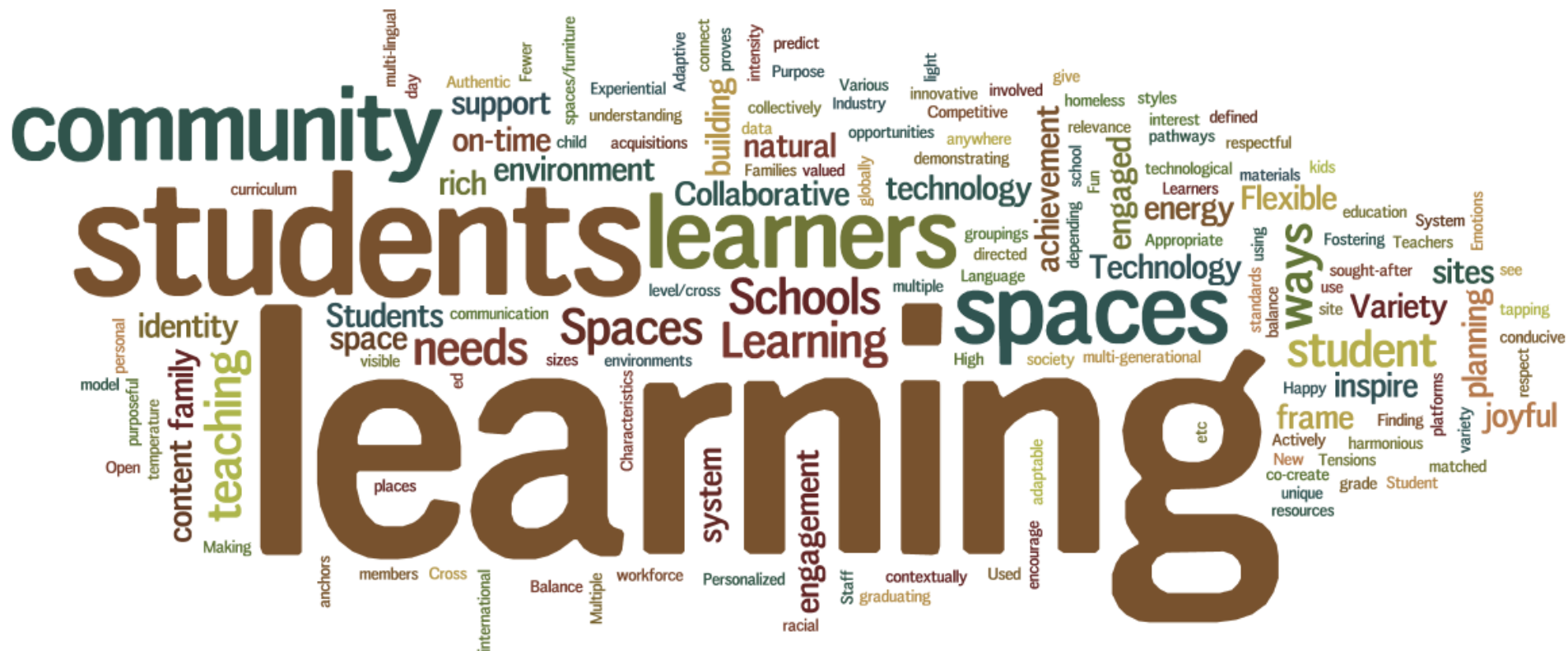
The purpose of a facility related vision statement is to guide the master planning effort, help us set priorities, align resources, and facilitate an efficient decision making process.

We SEE...

Imagine the district is successful beyond your highest expectations, and you're giving an international team of educators a tour of the district in the year 2025.

What do you see?





We See Wordle



DRAFT VISION STATEMENT

We envision welcoming, versatile, inclusive learning environments integrated into our communities that promote joyous success by balancing the factors that create authentic and engaging learning.



REFLECTIONS

Who are we?

**"If you're not prepared to be wrong, you'll
never come up with anything original."**

— SIR KEN ROBINSON

TED

**Academics
Out of School Time
Support Services**



**Creating
COMMON
GROUND**



**Strong Schools
Strong
Communities 2.0**



**What do students
want?**

Saint Paul Public Schools

Who do we serve and what are our goals?



District-at-a-Glance

Minnesota's largest urban school district with 39,000+ students in PreKindergarten-12

85 schools/programs PreK-5 Sites: 31

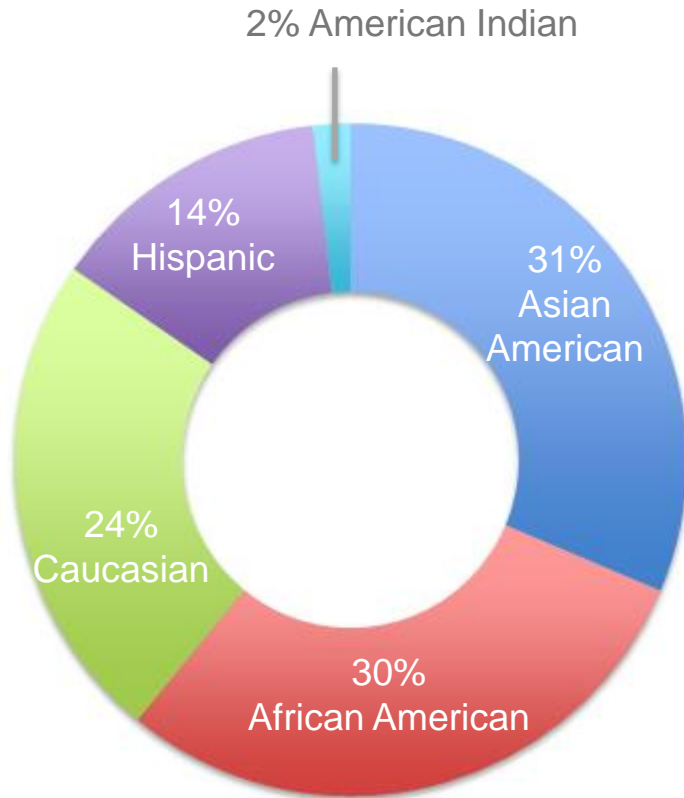
- Dual campus sites: 6
- 6-8 sites: 5
- 6-12 sites: 4
- 9-12 sites: 5
- K-8 sites: 7
- Special Education and other program sites: 27

5,376 full-time staff

- Pre-K-12 teachers: 3,135
- Paraprofessionals: 946
- Support staff: 1,068
- Principals and other leaders: 227



District-at-a-Glance

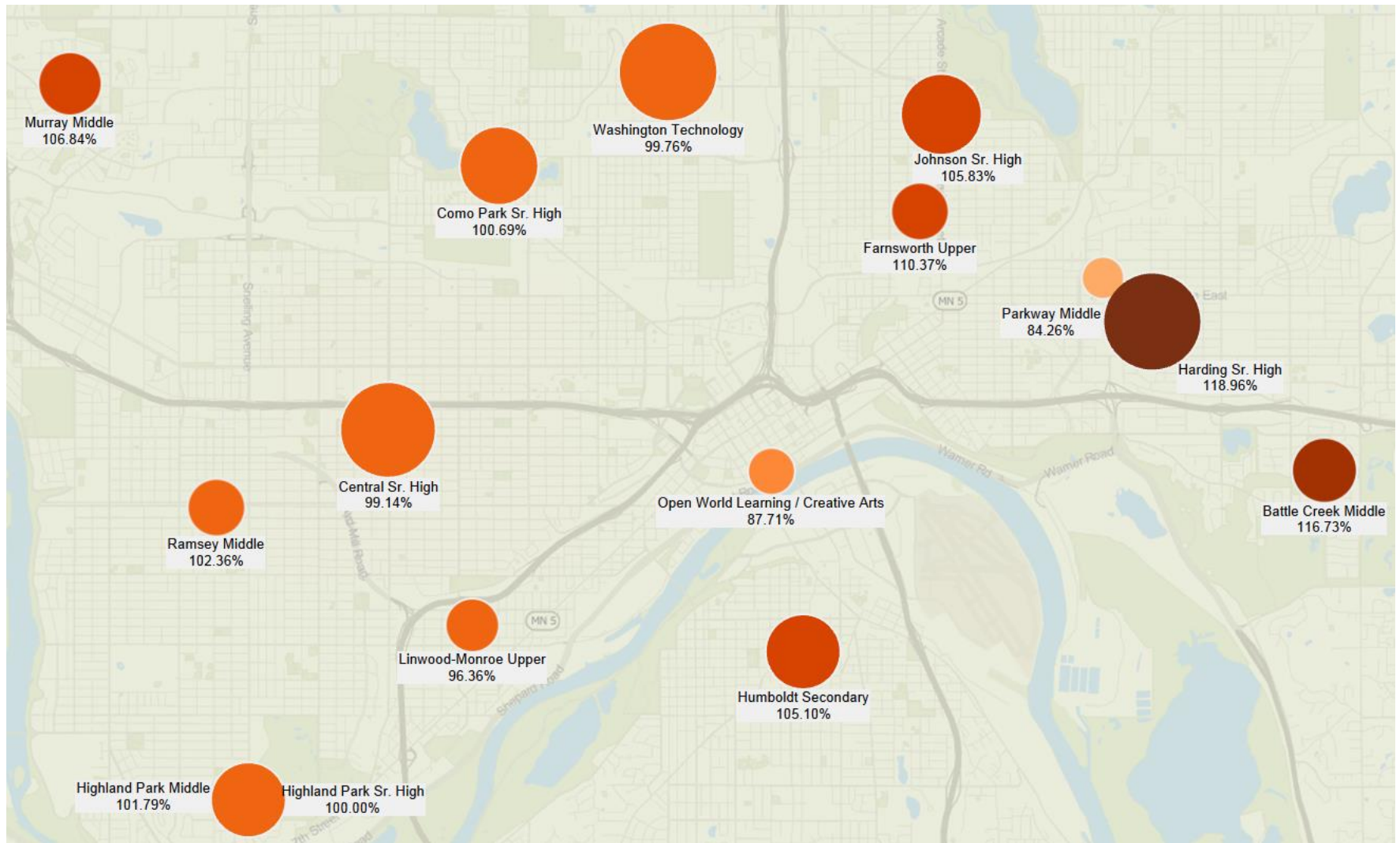


- Students speak 100+ languages and dialects
- 4,000* students new to SPSPS each year; 2,000* at the secondary level
- 17% of students require special education services
- 73% of students eligible for free or reduced-price lunch
- 2,000* students experience homelessness during the school year

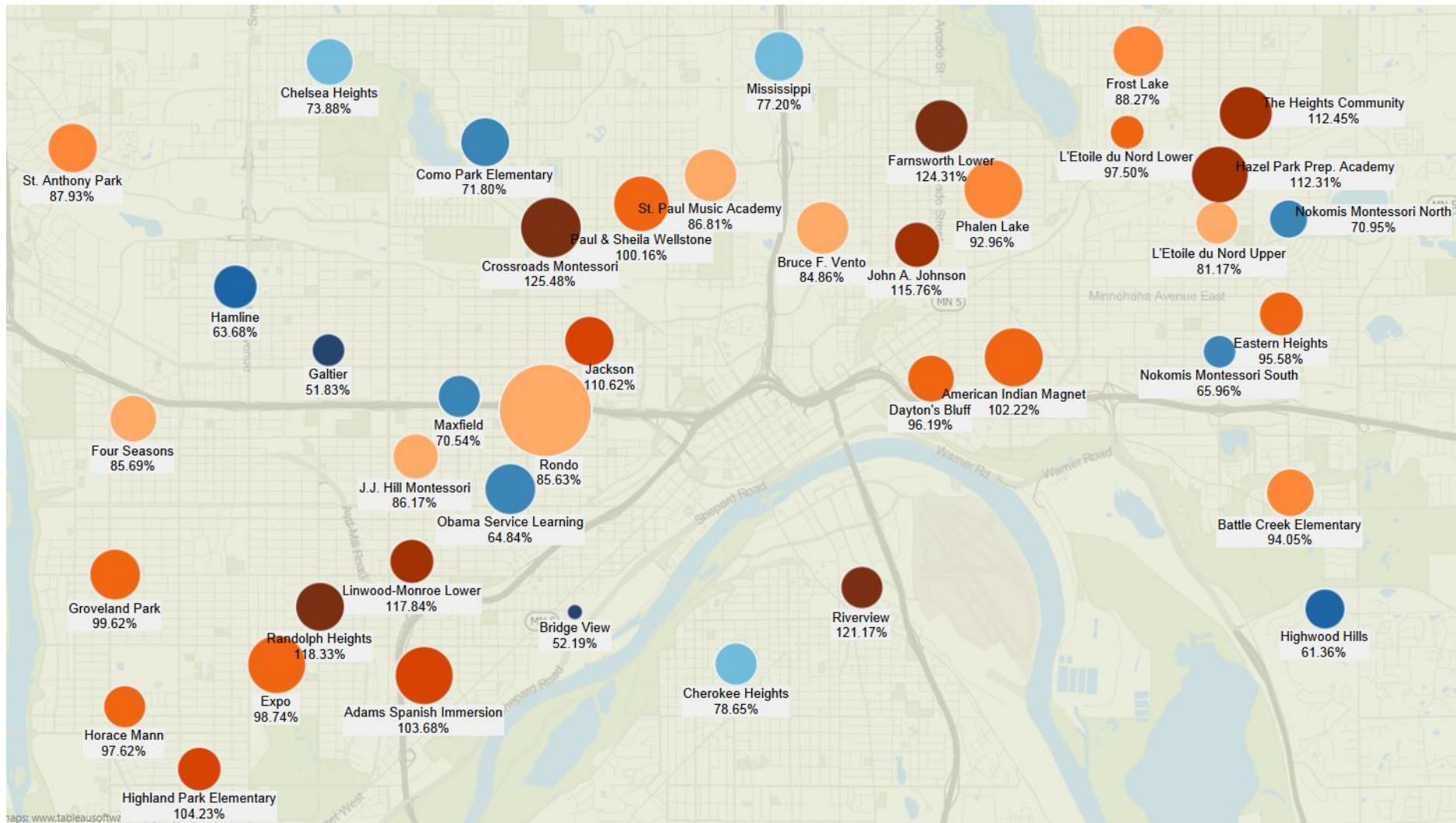
*Approximate numbers



Enrollment: Secondary Schools



Enrollment: Elementary Schools



maps: www.tableausoftware

Demographics

Historical Trends in Enrollment

SPPS by Area

Future Trends



Before we start... let's try a Socratic question

b.socrative.com

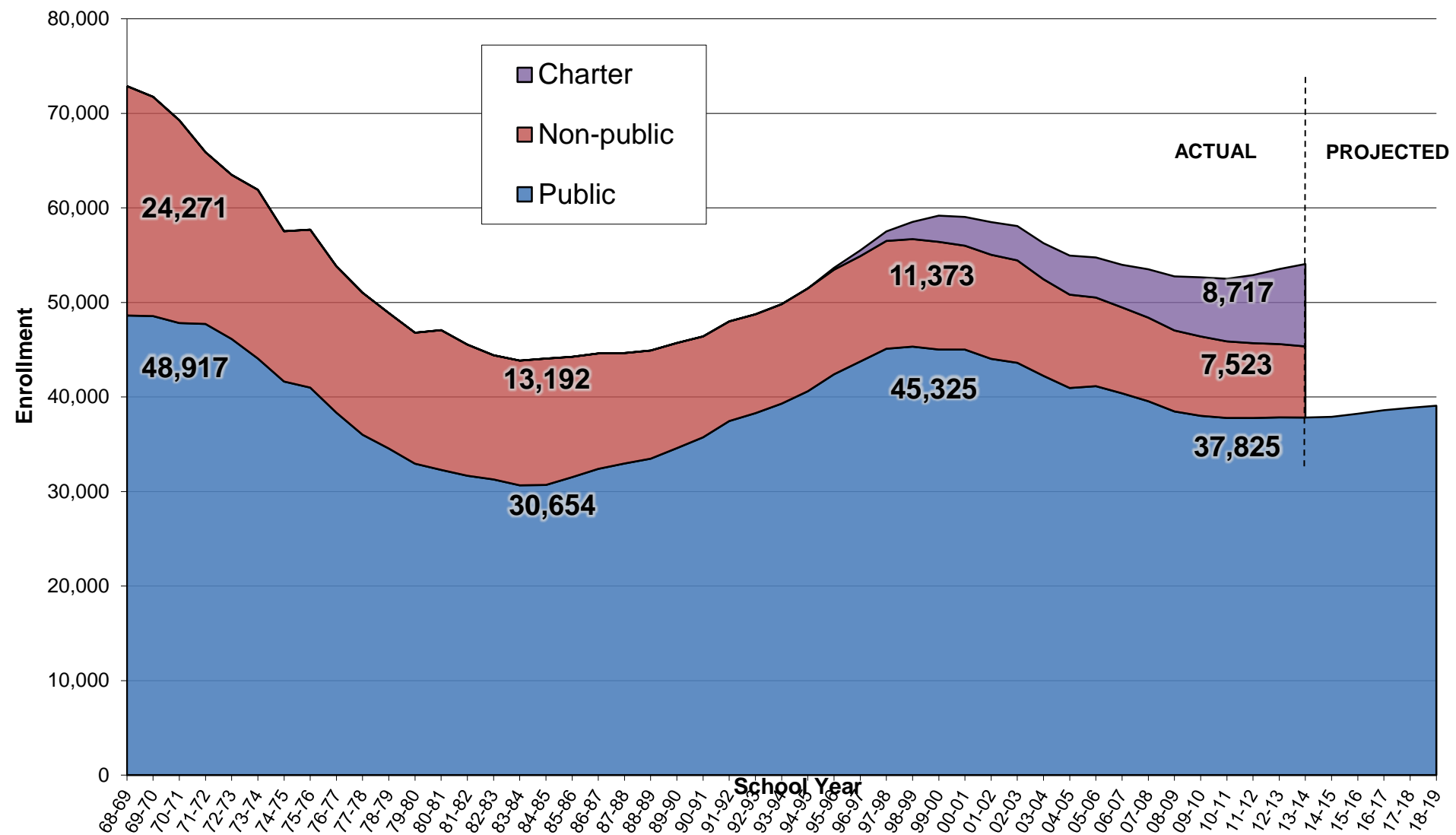
Room #: d1be03f6



Historical Trends in Enrollment



Enrollments in St. Paul - Public, Non-Public and Charter - 1968-present



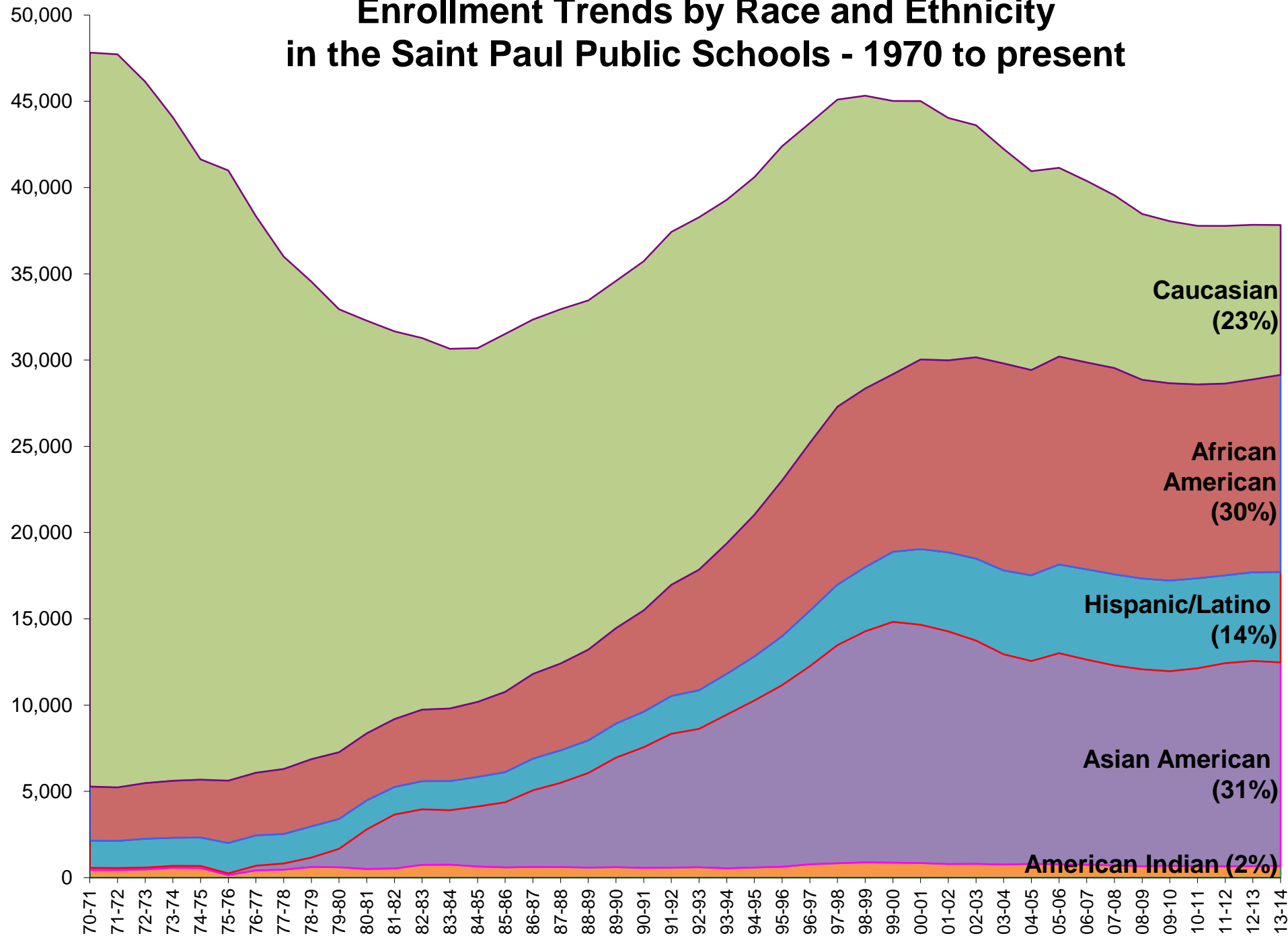
Socrative questions: Race

b.socrative.com

Room #: **d1be03f6**



Enrollment Trends by Race and Ethnicity in the Saint Paul Public Schools - 1970 to present



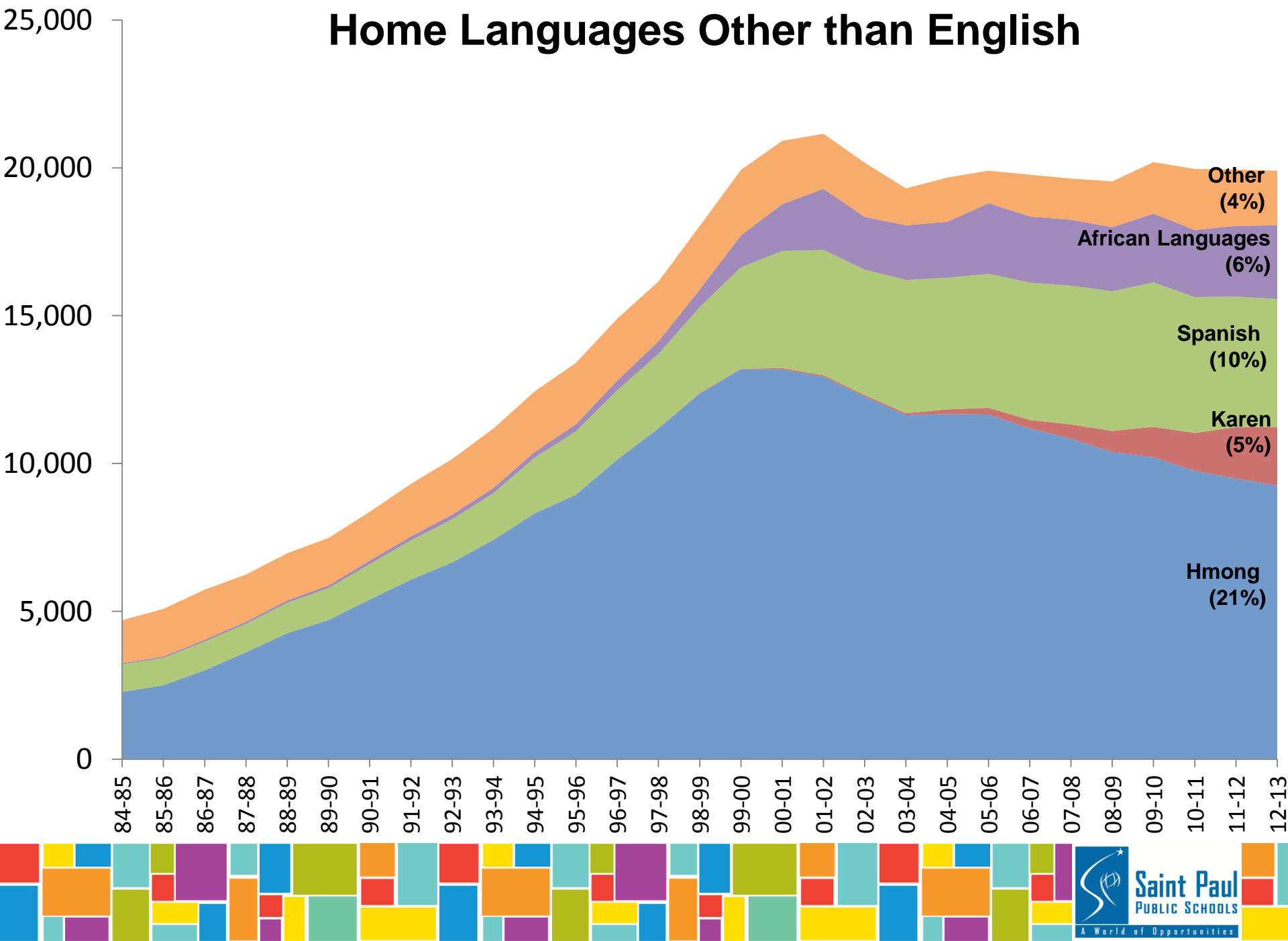
Socrative questions: Language

b.socrative.com

Room #: **d1be03f6**



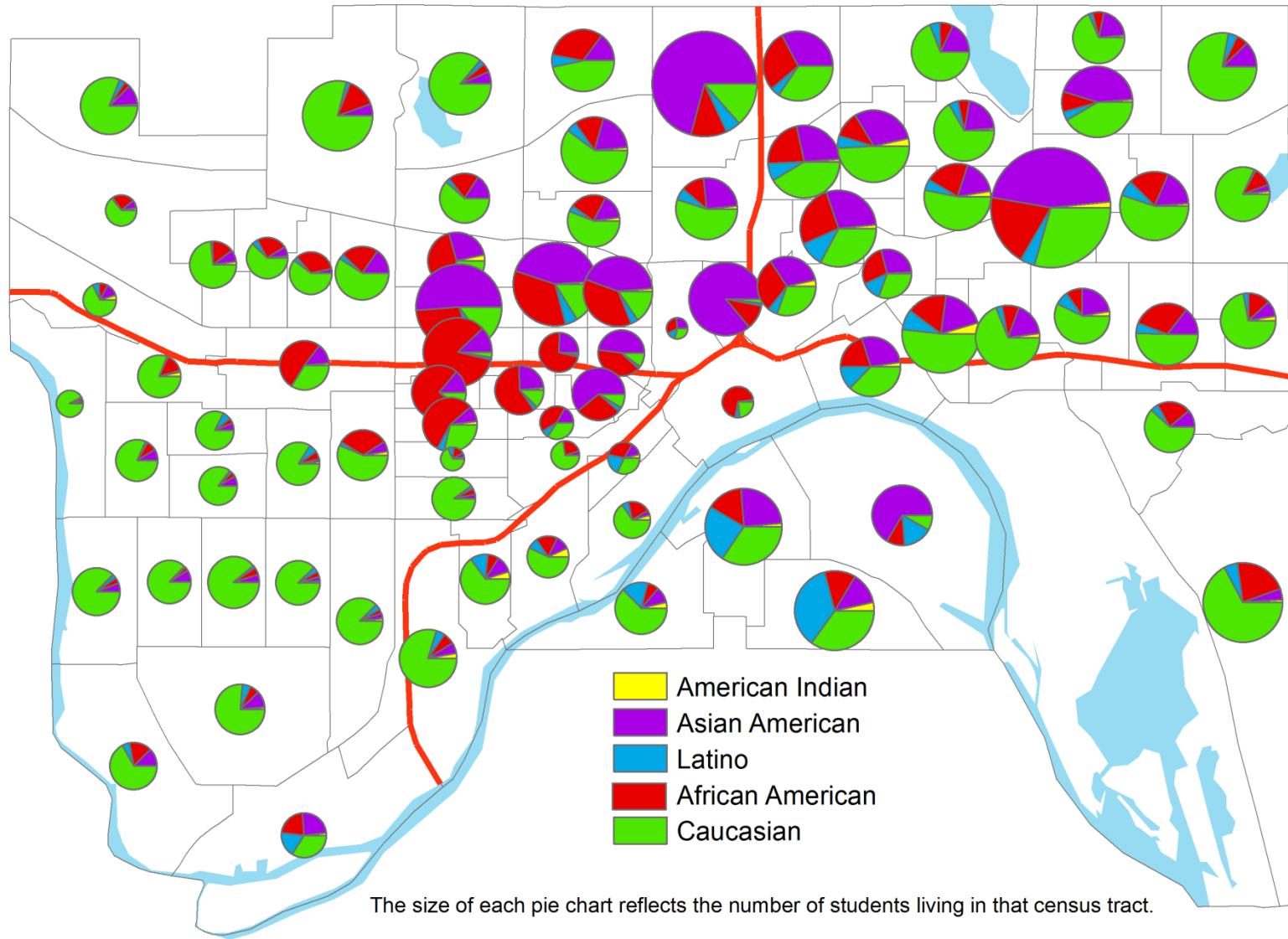
Home Languages Other than English



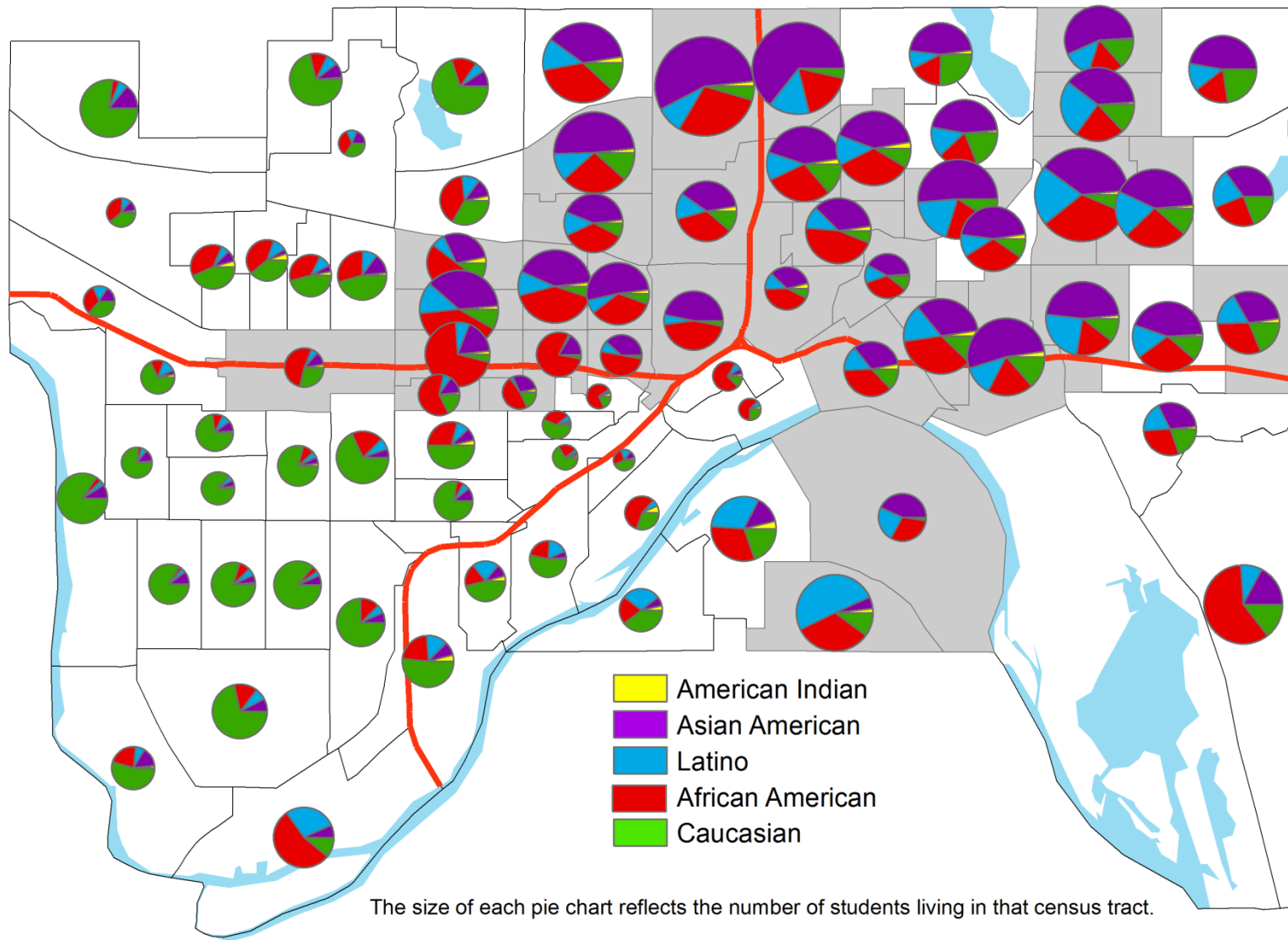
A Closer Look at SPPS by Area



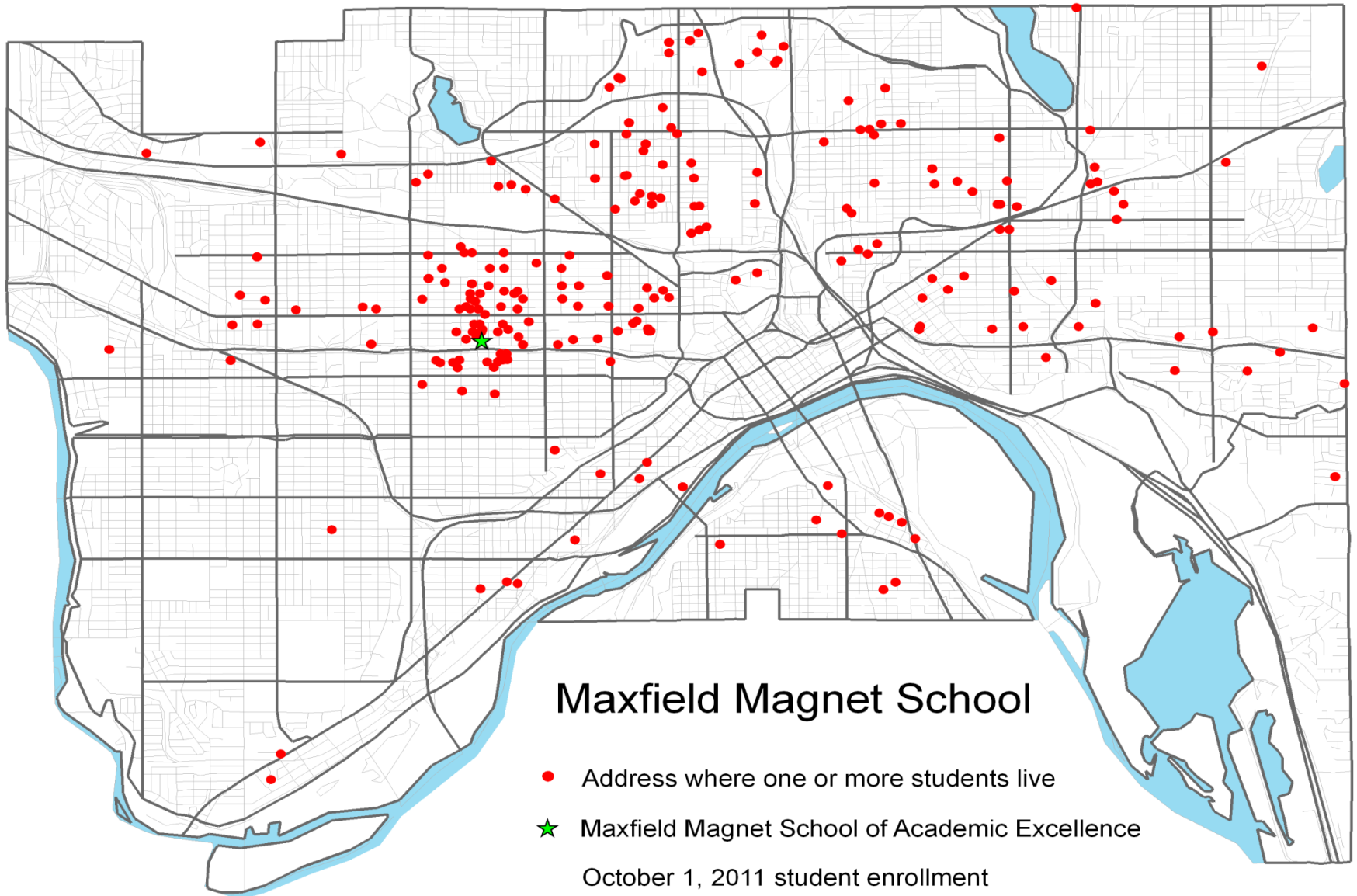
Enrollment by Race and Student Residence 1994-95 Saint Paul Public Schools



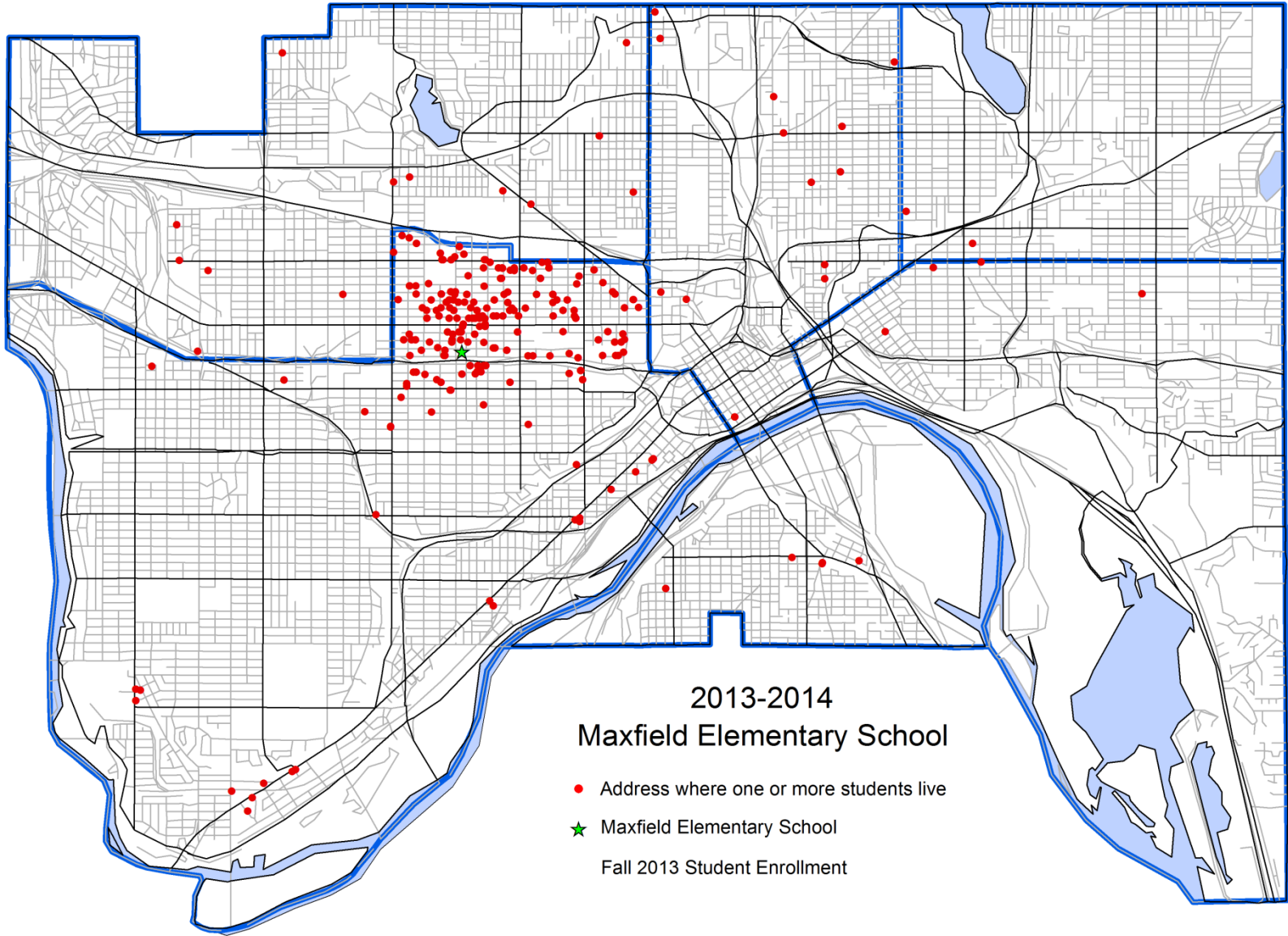
Enrollment by Race and Student Residence 2013-14 Saint Paul Public Schools



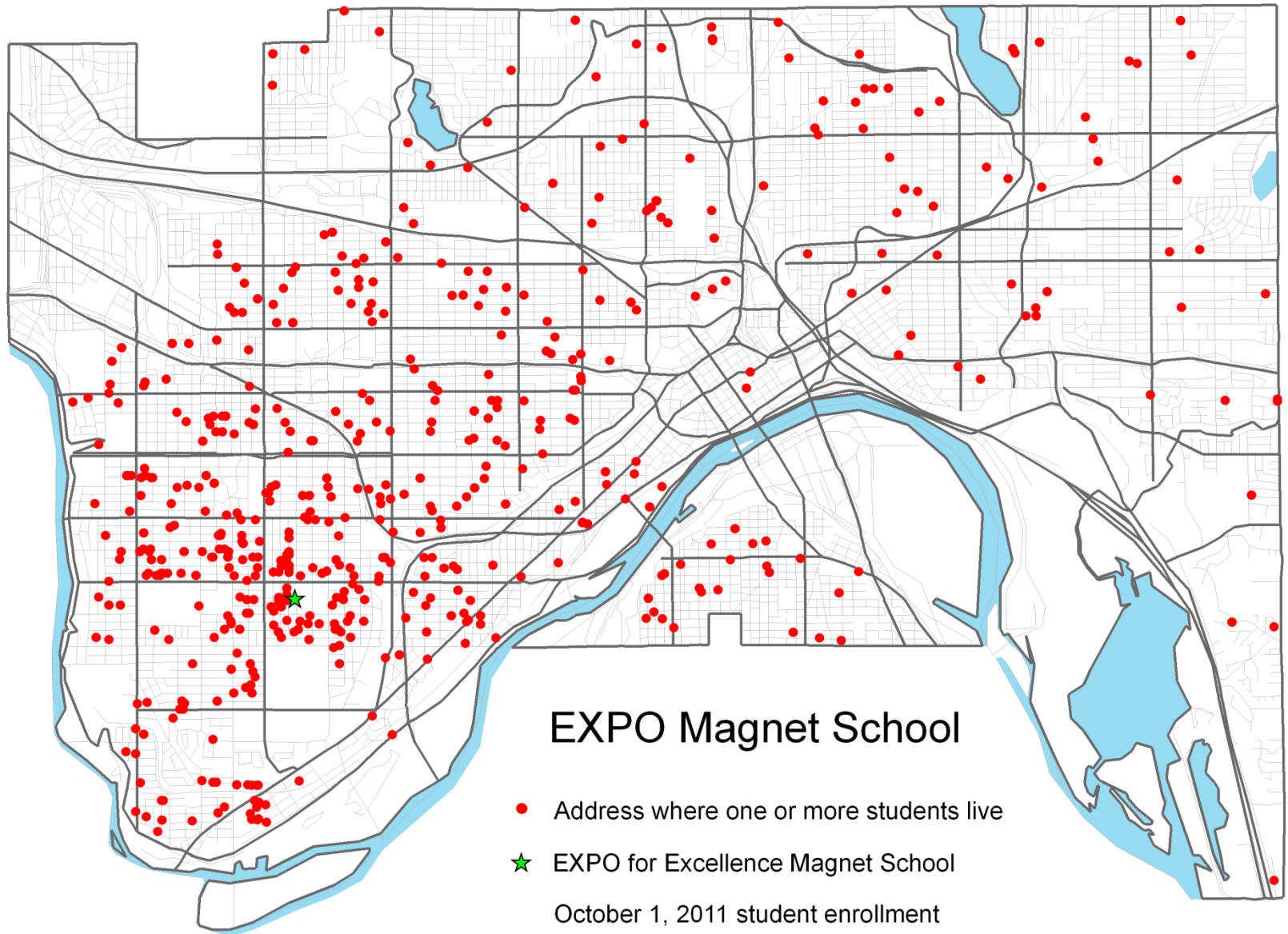
Maxfield: Student Residence Before SSSC Changes



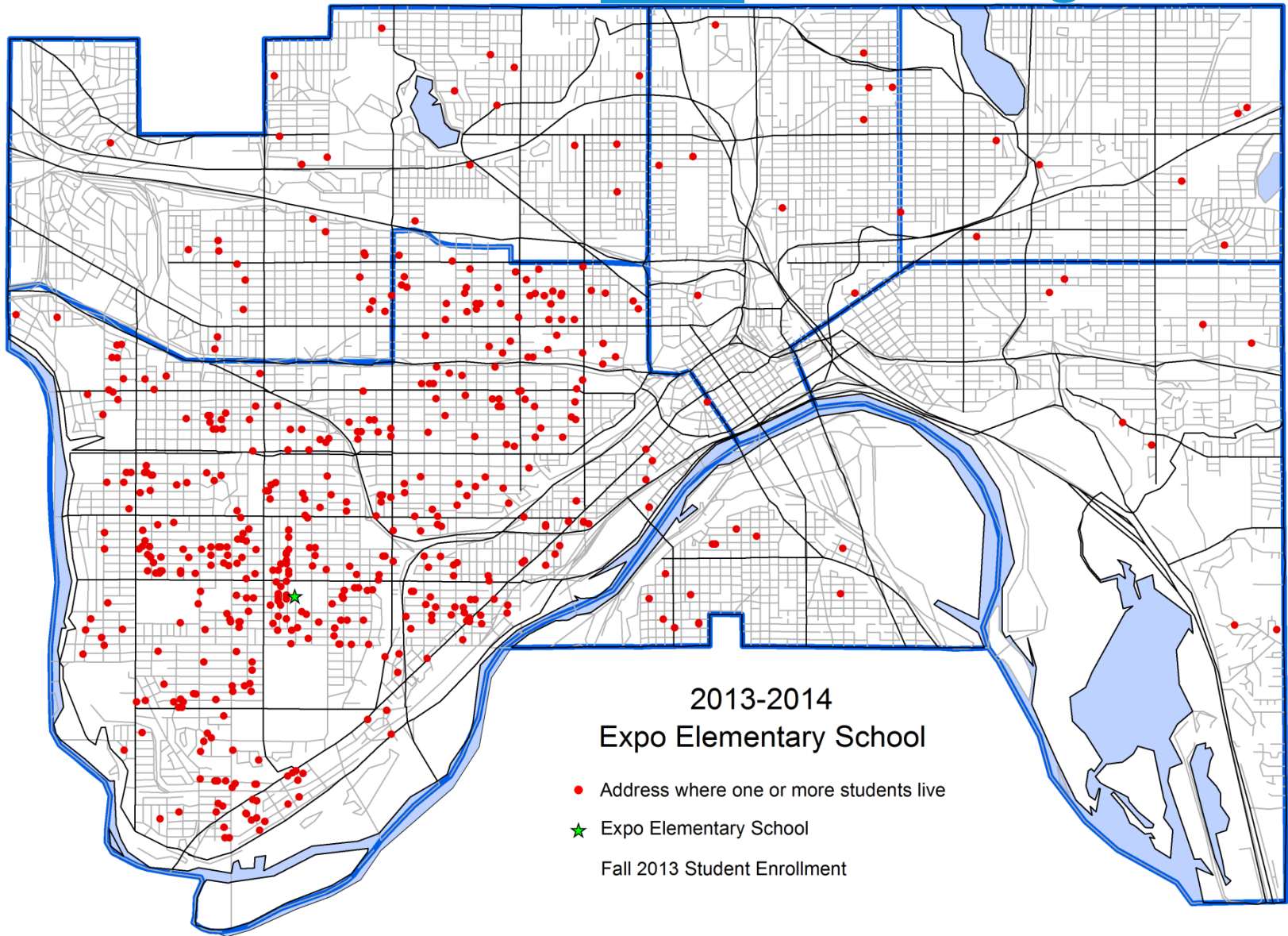
Maxfield: Student Residence After SSSC Changes



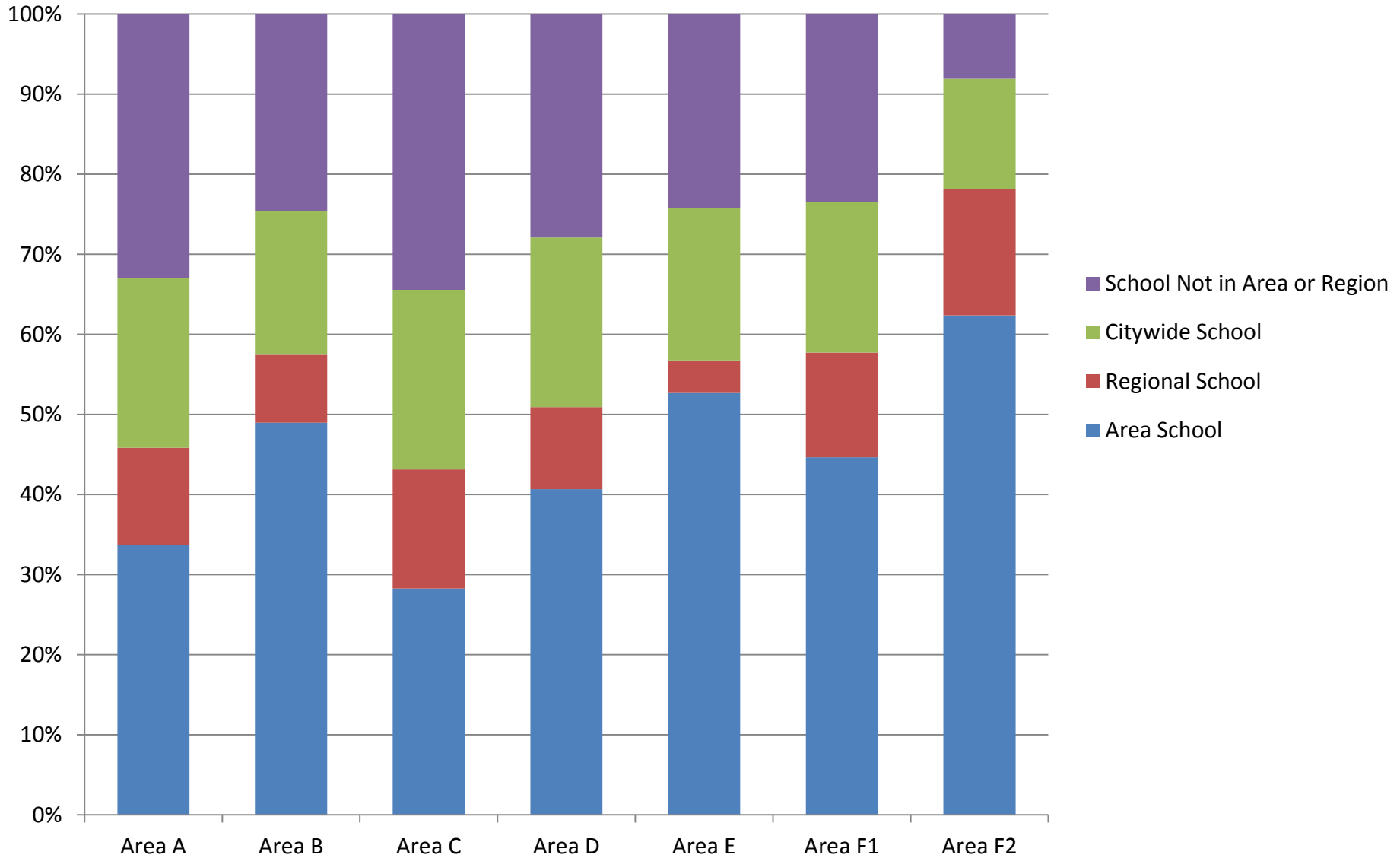
Expo: Student Residence Before SSSC Changes



Expo: Student Residence After SSSC Changes



School Choice By Area of Student Residence



Exploring Future Trends



Enrollment Projections

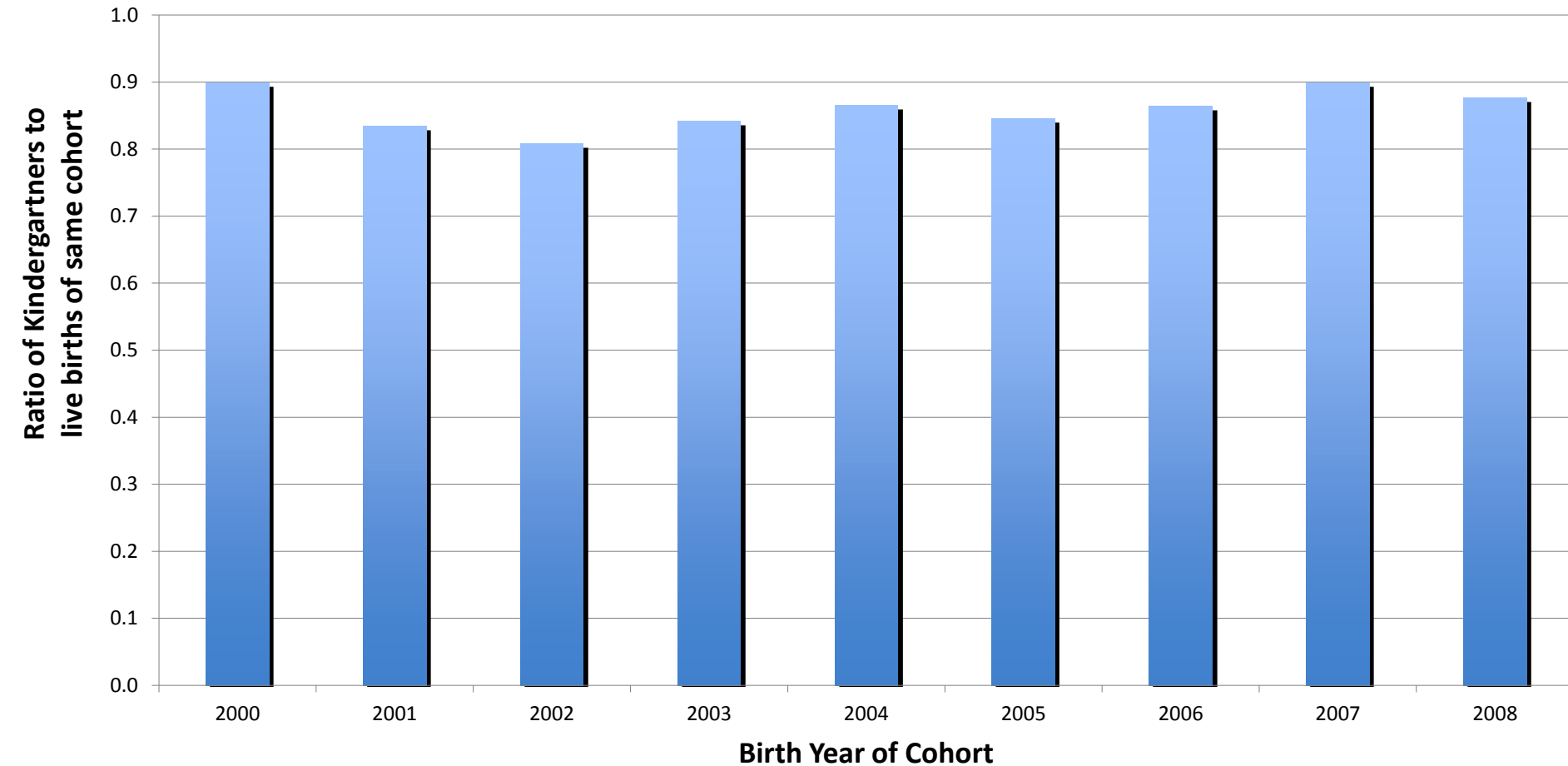
Question: How many students will we have in SPPS, and where?

- Projections driven by historical models primarily using birth rates and cohort enrollment changes
- SY13-14: Projections began to include consideration of Areas and articulations in addition to historical patterns
- SY14-15: Class size impact on capacity needs to be considered in projection model



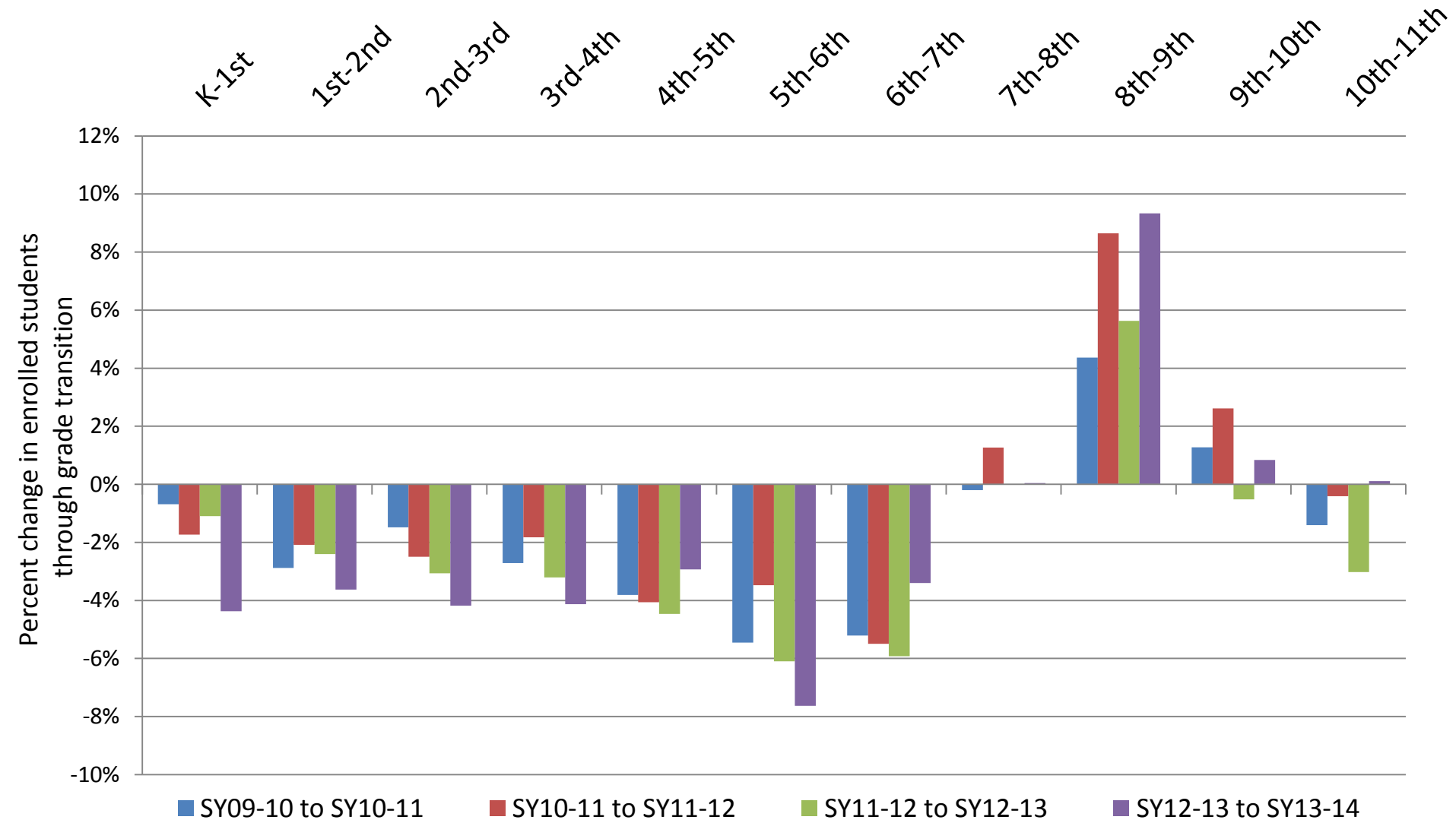
Birth rates and enrollment patterns

Ratio of SPPS Kindergarten enrollment to Saint Paul births in same cohort (Birth years 2000 to 2008)



Saint Paul Public Schools Enrollment

Through Grade Transitions, 2009 to 2013, with 5-year Average



Demographic trends to consider

- Birth rates (0-4 census)
- Immigration
- Refugee resettlement – More Karen families coming to U.S.
- In-migration/secondary migration
- Economic and housing development
 - LRT/Central Corridor
 - Ford plant redevelopment



Socrative question: Your Prediction

b.socrative.com

Room #: **d1be03f6**



REFLECTIONS



Strong Schools, Strong Communities for All SPPS Students



Strong Schools, Strong Communities 2.0

- First phase of SSSC ends SY2013-2014
- Infrastructure now in place to accelerate student achievement
- SSSC 2.0 continues the work through 2019
- Approved by the board last March.





Strong Schools, Strong Communities 2.0

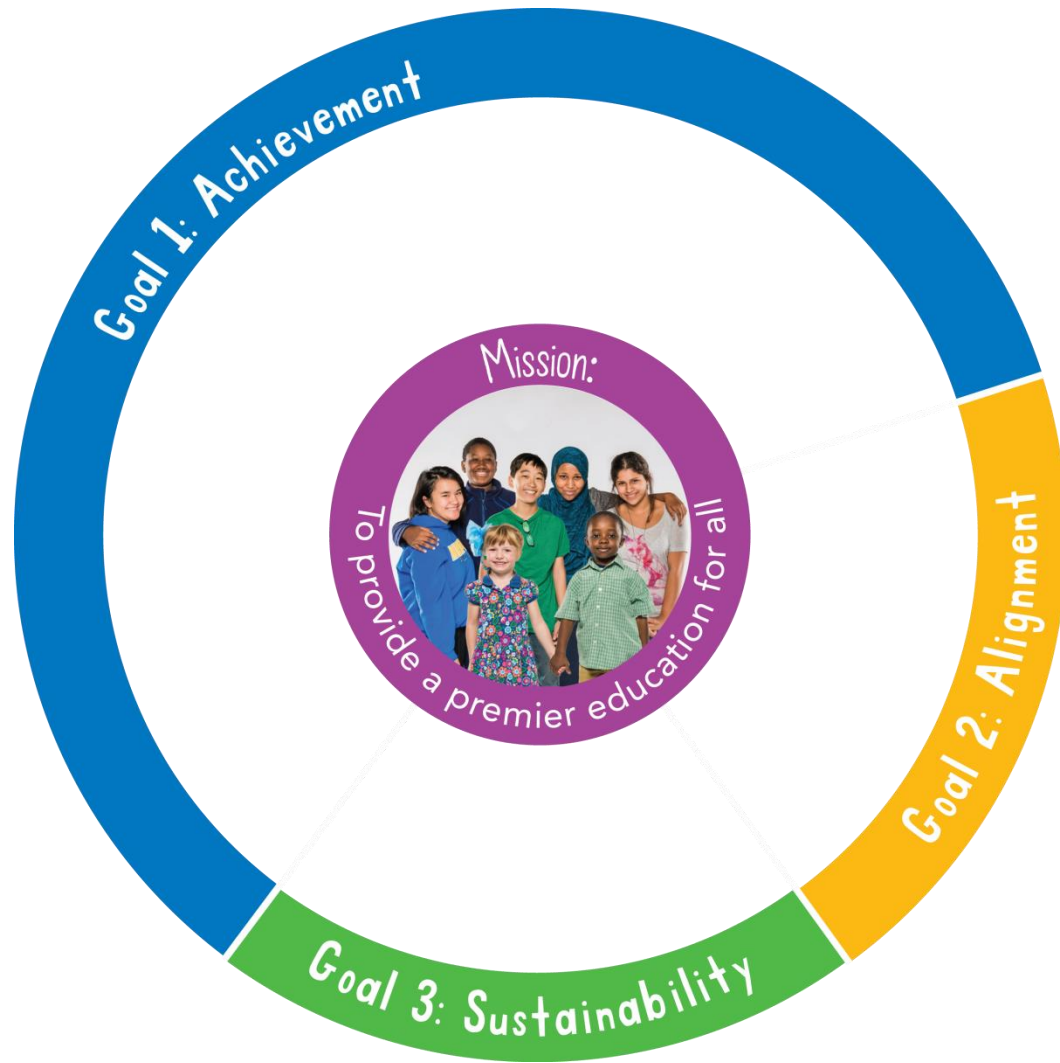
Goal 1: Achievement for all students

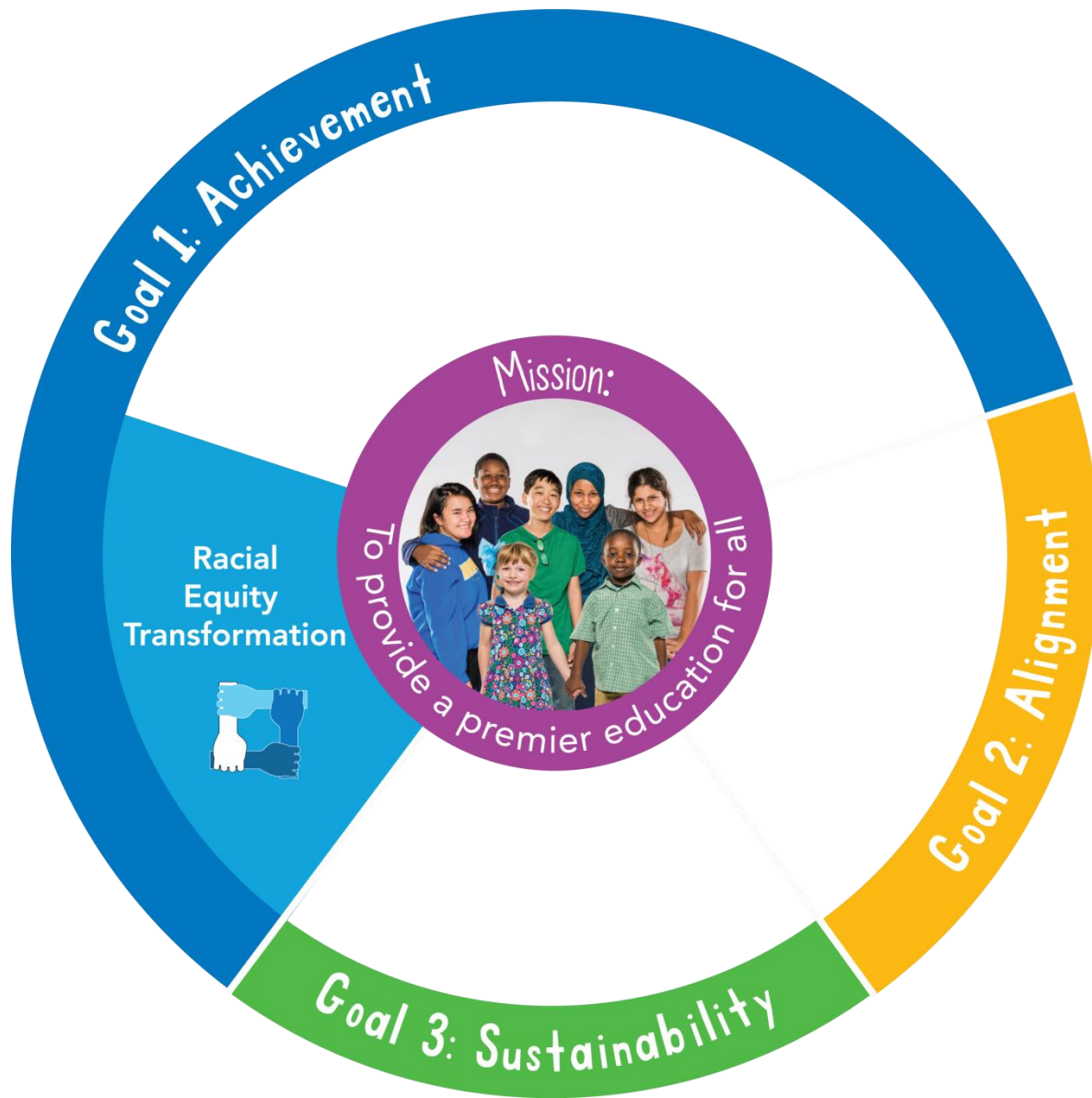
Goal 2: Alignment of school programs

Goal 3: Sustainability to optimize classroom resources and academics



Strong Schools, Strong Communities 2.0





SSSC 2.0: Racial Equity Transformation

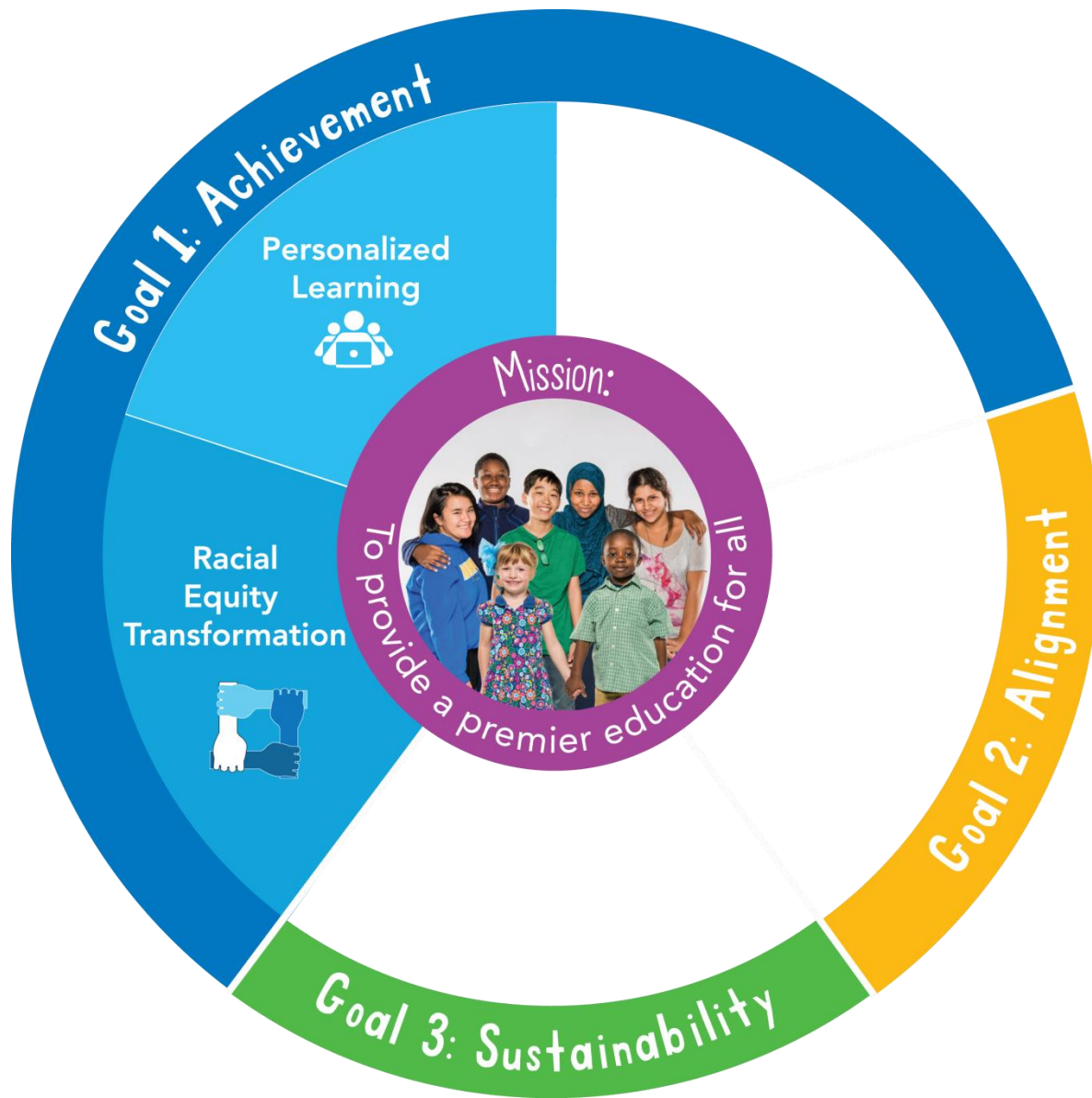
- Change practices and systems
- Value and invest in all students
- Examine our personal racial beliefs



Racial Equity Lens

- Do the tests we have to choose from favor one student group over another?
- Do the people at the table represent who our students are?
- Are we making sure our families have translators?
- Are our open houses welcoming for all of our families?





SSSC 2.0: Personalized Learning

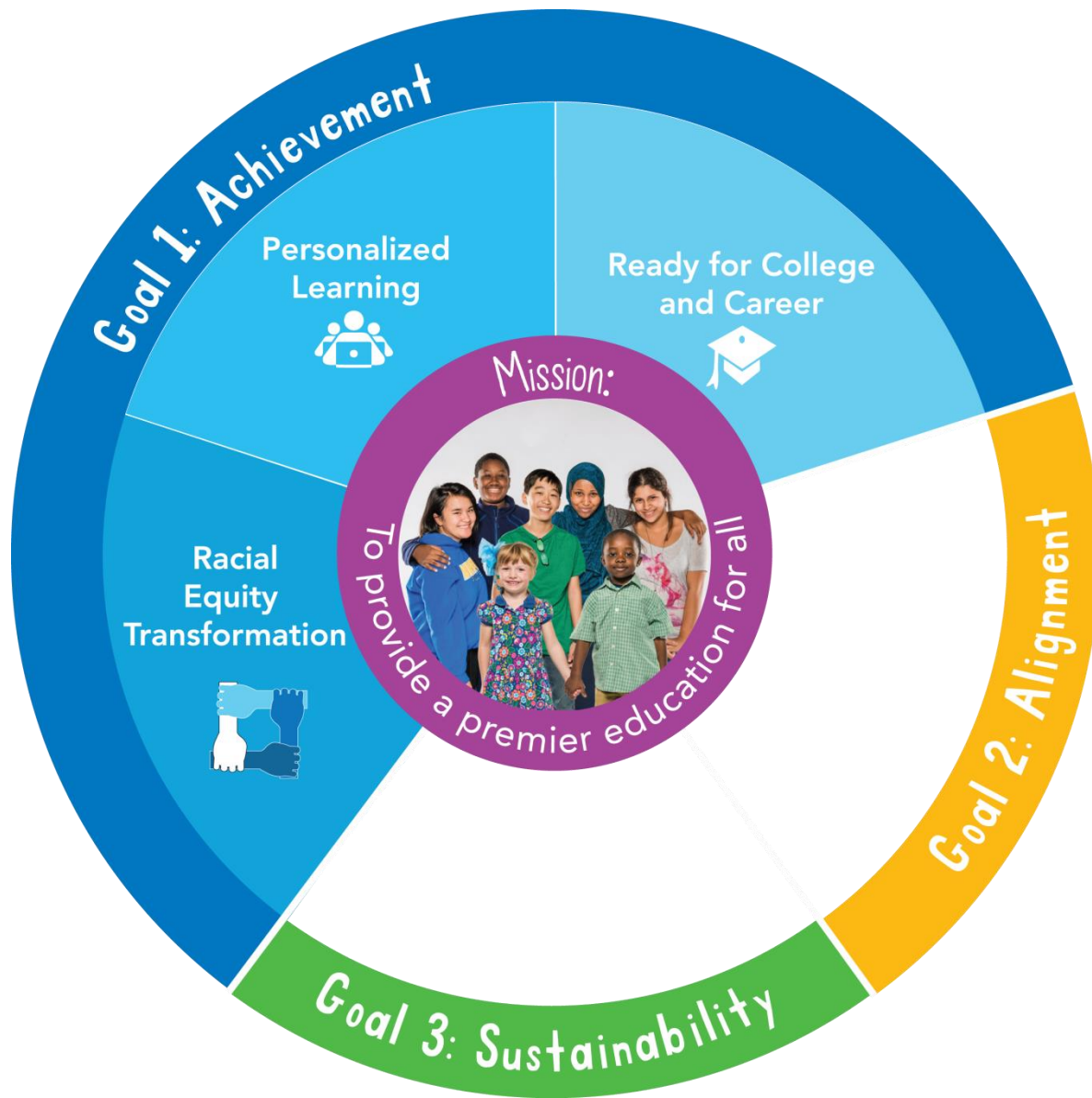
- Adapts teaching and learning to diverse needs and abilities of students
- Provides multiple ways to access information, express themselves, and demonstrate learning



SSSC 2.0: Personalized Learning

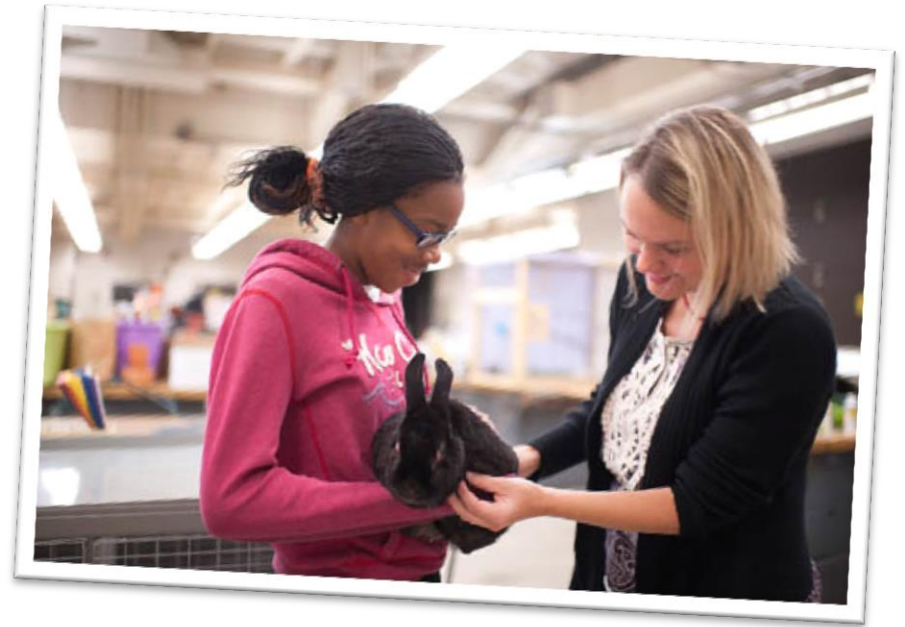
- Personalized learning as way SPPS educates all students (educational framework)
- More technology tools to schools and students
- Use technology to help students learn
- Support teachers in providing students with personalized learning





Ready for College and Career

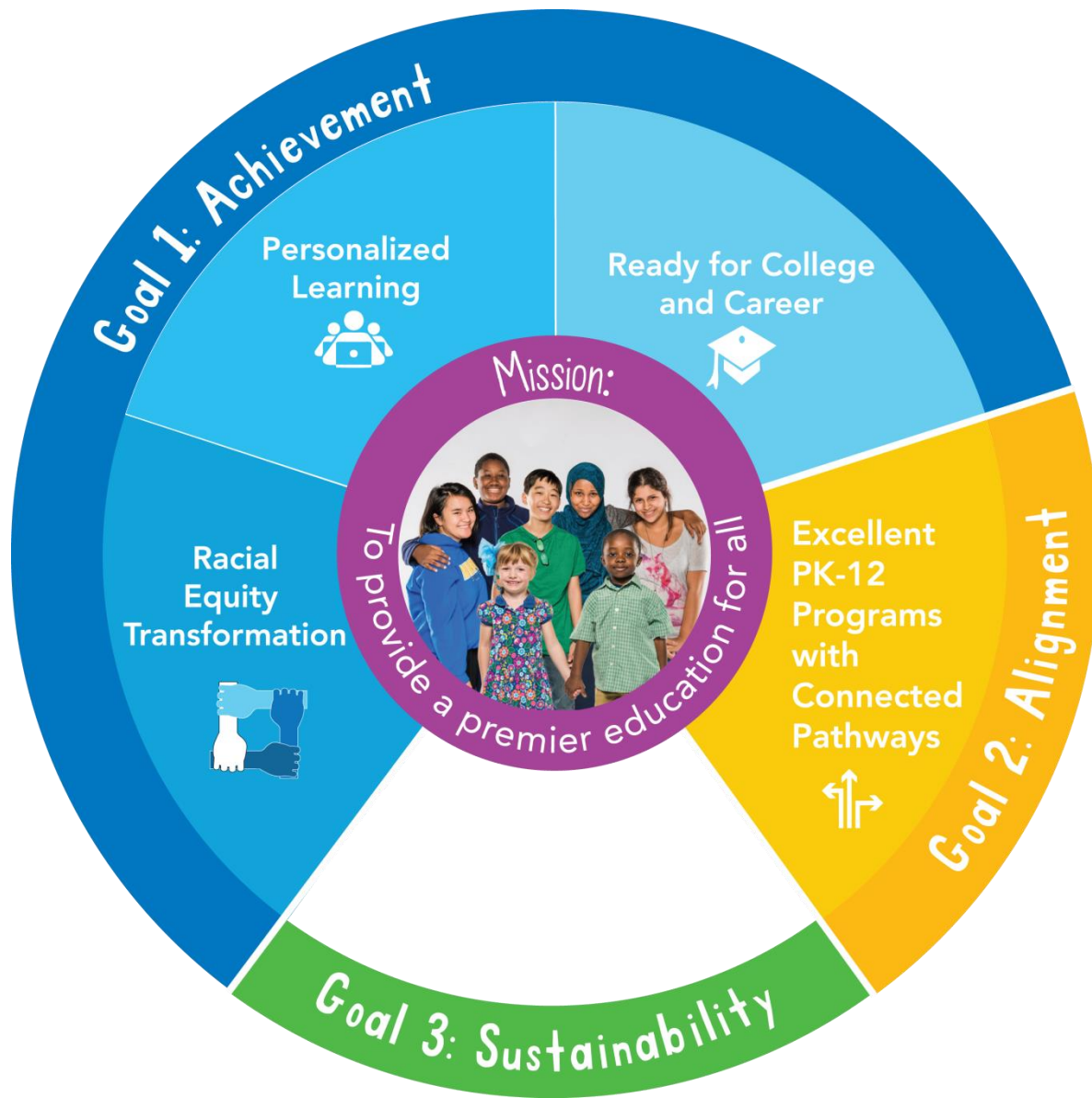
- 3/4 of living wage jobs require study, degree or internship after high school
- 75% of students must graduate and pursue post-secondary opportunity by 2020



SSSC 2.0: Ready for College and Career

- Students start planning early (middle grades) for high school and beyond
- Increasing post-secondary credit accrual opportunities
- Expand Career and Technology (CTE) programs
- Consistent grading, scheduling and graduation requirements

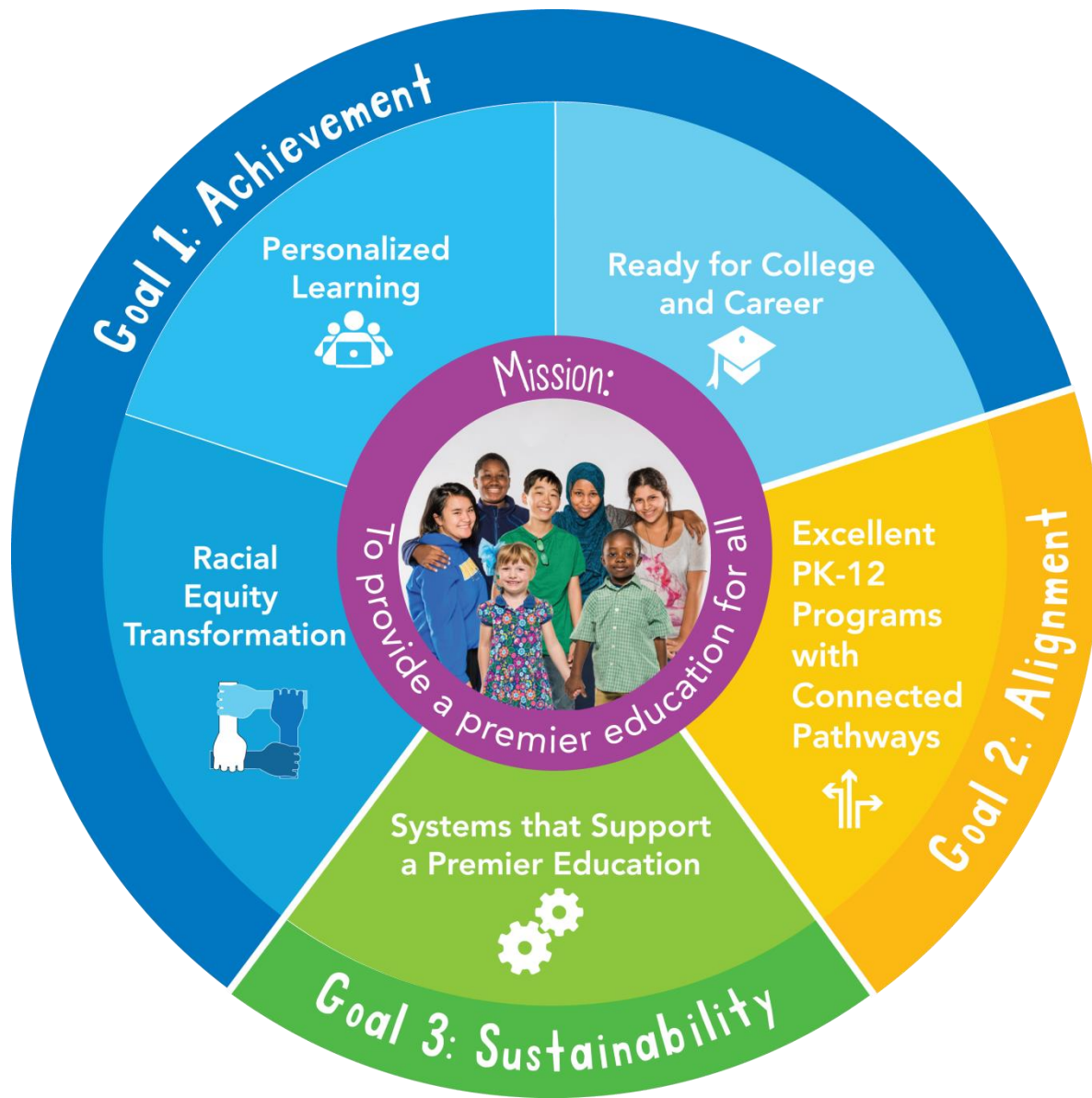




SSSC 2.0: Excellent PK-12 School Programs with Connected Pathways

- Expand cultural, language, and specialized programs
- Ensure programs have clear pathways from elementary through high school
- Opportunities to enroll in challenging classes for all students
- Pre-kindergarten opportunities for more children



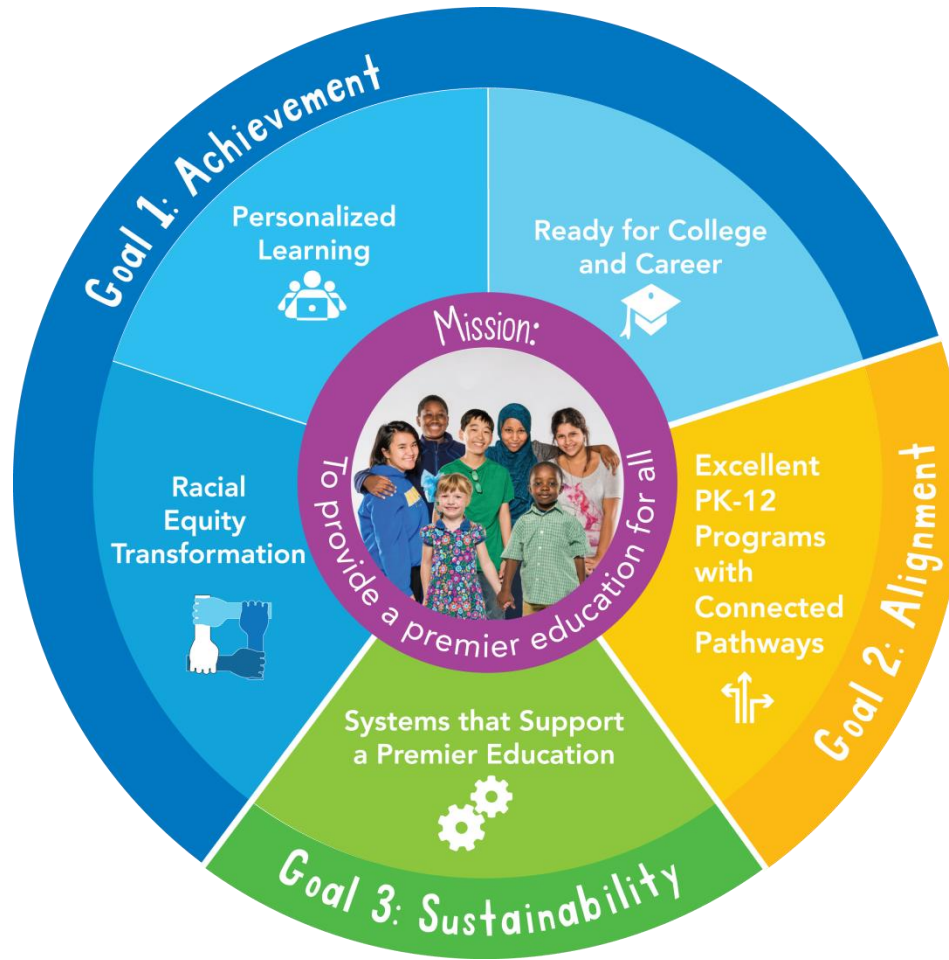


SSSC 2.0: Systems that Support a Premier Education

- Attract and retain students and families
- Build an exceptional workforce
- School buildings are equipped for students' learning needs
- Efficient and effective financial and operational practices
- System to hold ourselves accountable to our strategic goals and our community



Questions?



Who are we?

**"If you're not prepared to be wrong, you'll
never come up with anything original."**

— SIR KEN ROBINSON

TED

**Academics
Out of School Time
Support Services**



**Creating
COMMON
GROUND**



**Strong Schools
Strong
Communities 2.0**



**What do students
want?**

REFLECTIONS



CUNNINGHAM
G R O U P

Who are we?

"If you're not prepared to be wrong, you'll never come up with anything original."

— SIR KEN ROBINSON

TED

Academics
Out of School Time
Support Services



Creating
**COMMON
GROUND**



Strong Schools
Strong
Communities 2.0



What do students
want?

Academic Services

Types of Schools and Paths of Articulation

Grade Structure

Pre-Kindergarten

Alternative High Schools

College & Career

Multilingual Learning

Specialized Learning

Personalized Learning

Student & Staff Supports

Arts Education

Extended Day for Learning

Summer Term

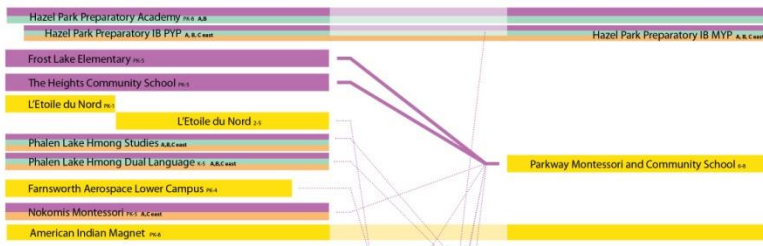


School types

- **Community schools** provide strong programs close to home with K-12 *pathways* to provide students with smooth transition to upper grades
- **Regional and District Magnets** focused on interest areas with K-12 *articulations* to provide students with smooth transition to specialized programs in upper grades
 - Aerospace/Engineering ; BioSMART; Cultural specific (American Indian, Hmong, etc.); Language immersion (French, Hmong, Mandarin, Spanish); Visual and Performing Arts; Gifted and Talented; Montessori; International Baccalaureate; Preparatory



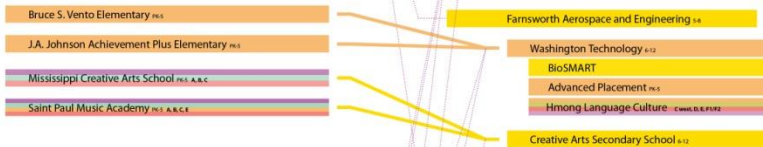
A



B



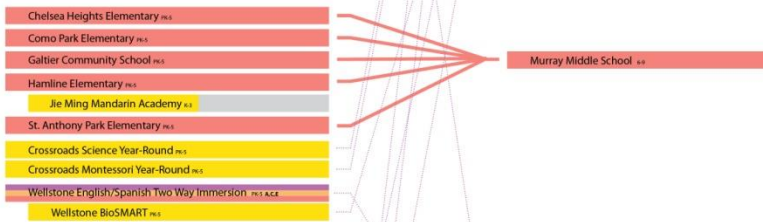
C



D

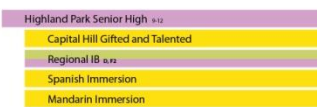
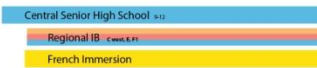
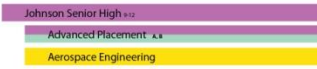
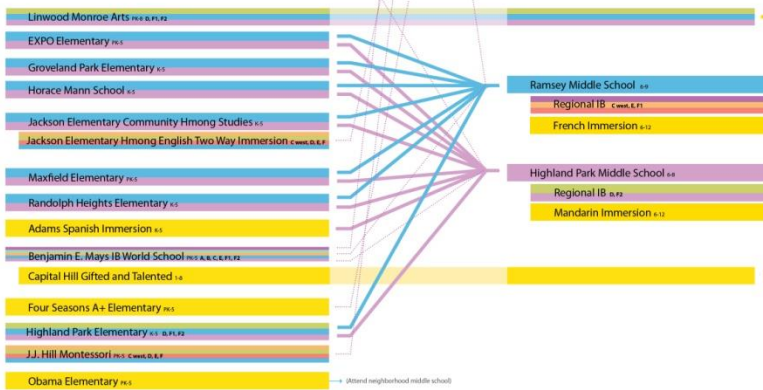


E



F1

F2



School types

Facility impact:

Program types have unique needs and are frequently in spaces designed for completely different purposes



Grade level structures – more consistent

With a few exceptions, SPPS schools now have consistent grade configurations:

- Elementary: PreK-5; K-5; PreK-8
- Middle: 6-8 (PreK-8)
- High School: 9-12
- **Facility impact:**

Some atypical grade configurations still exist and being reviewed, e.g., PreK-4, 5-8, PreK-1, 2-5



Prekindergarten Expansion

- Continued emphasis on early childhood programming
- Pre-kindergarten = 39 sites; 1820 seats
- **Facility impact:** PreK expanded in 2013-2014
 - Possible Expansion



Alternative High Schools

- Served 587 total students; 5% of total high school population (Oct. 2013)
- Student who need or desire different learning environments from traditional high schools
 - Flexible hours
 - Two locations: Gordon Parks and LEAP
 - Alternative teaching methods to help students make progress toward graduation



Alternative High Schools - Programs

- AGAPE (Adolescent Girls and Parenting Education) – for pregnant and teen parents; includes intervention services to address educational barriers; college credit accrual
- LEAP – serves students ages 14-20 new to U.S. and learning English as they earn their high school diploma
- Gordon Parks – small school offering flexible morning and afternoon programs, online options, media-infused courses
- Gordon Parks Evening – online and traditional classes in evening at two sites help students complete course requirements and graduate



Alternative High Schools - Programs

Facility impact:

- Gordon Parks High School consistently has greater need for space; frequently all spaces in use for 12+ hours a day
- May run out of space at Gordon Parks for Evening High School due to high enrollment
- Possible new space to accommodate hybridized forms of learning, e.g., personalized learning, project-based learning, credit recovery, and on-line learning (both credit recovery and non-credit recovery)



College and Career culture

- Every PreK-12 grade student understands **college is a viable** option for each of them
- Every student has **access to rigorous academic preparation** to succeed in college and career
- Every student and family has access to consistent and informed **guidance** about the college admission process (choosing a college, funding a college, and graduating college)



College and Career culture

Facility impact:

- Work spaces for high school students enrolled in college classes
- Experiential learning opportunities, e.g., Como's Academy of Finance; Humboldt's Certified Nurse's Assistant courses; Johnson's Ground School Certification



Multilingual Learning

- Programs:
 - English Learners
 - Language Academy
 - Indigenous/World Languages
 - Dual language
 - Cultural enrichment (Hmong, Latino, Somali, Karen, American Indian)



Specialized Learning (Special Education)

- Services:
 - Specific Learning Disabilities
 - Deaf/Hard of Hearing (DHH)
 - Visually Impaired (VI)
 - Classroom support for students with less severe Emotional or Behavioral Disorders (EBD)
 - Speech and languages services
 - Consultation for Other Health Disability/Traumatic Brain Injury/Physical Impairment



Multilingual and Specialized Learning

- Mainstreaming more students to ensure they are getting rigorous coursework and are ready for college
- **Facility impact:** More efficient use of space with services integrated into the mainstream classroom



Learning at SPPS includes:

- **Standards-based learning**
 - Set by MN Dept. of Education
 - “Standard knowledge” all students must learn in each grade and subject area, e.g., literacy, math, science, social studies
 - SPPS aligns its content and instruction to these standards
- **Aligned learning** is ***what** students are learning* by keeping curriculum consistent across various schools
- **Personalized Learning** is ***how** students are learning* to better meet the individual needs of students



Personalized Learning

- Instruction tailors teaching and learning to **diverse student needs** instead of “one-size-fits-all” approach
- Students have **multiple ways to access information**, think critically and demonstrate what they've learned



Personalized Learning

- Increase **use of technology** to accelerate learning inside and outside of classroom
 - iPads for every student and teacher (completed in 2015-2016 school year)
 - Learning anytime, anywhere
 - Learners pursue interests and opportunities that are racially and culturally relevant
 - Repeating lessons when necessary or moving on to more challenging lessons ahead of classmates
 - Support student collaboration beyond classroom



Personalized Learning

- **Facility impact:**
 - Flexible, comfortable learning and work spaces for individuals, pairs, and small groups
 - Supporting technology tools, e.g., complete Wi-Fi access in buildings, more outlets for charging devices, docking stations, chairs with power sockets in arms to recharge devices
 - Flexible furniture that can move easily



Personalized Learning

- **Facility impact:**
 - Workspaces (desks) large enough to accommodate both an iPad/laptop and textbook/notebook
 - Mobile presentation area (no fixed LCD)
 - Spaces for silent recording
 - Movable cabinetry and storage units
 - Adjustable lighting



Student Supports

- **Student behavior addressed through:**
 - Positive Behavioral Intervention and Supports (PBIS)
 - Additional mental health supports in schools
- **Facility impact:**
 - Additional office spaces for alternative schools



Student Supports

- **Wrap-around services via Achievement Plus schools**
 - Supports academic achievement by addressing life barriers and offering comprehensive range of support services to both students and families
 - Assistance with food, clothing, housing, health, mental health, employment and tutoring
 - Achievement Plus schools: John A. Johnson Elementary, Dayton's Bluff Elementary and Saint Paul Music Academy
- **Facility impact:** Space for portable dental and medical units



Teachers - Professional Learning Communities (PLCs)

- PLCs foster collaborative learning among teachers by meeting regularly to share, analyze and improve classroom “best practices” to accelerate student learning
- **Facility impact:**
 - Spaces for teachers to formally gather in teams for professional development
 - Opportunity to model collaboration for students
 - Spaces with projection capability



Arts Education



Visual and Performing Arts: Goals

Enable youth to:

- Develop critical and creative thinking skills enhancing awareness of self and others
- Use multiple perspectives to make meaning from learning experiences in the Arts
- Develop the capacities to create, perform and respond with understanding



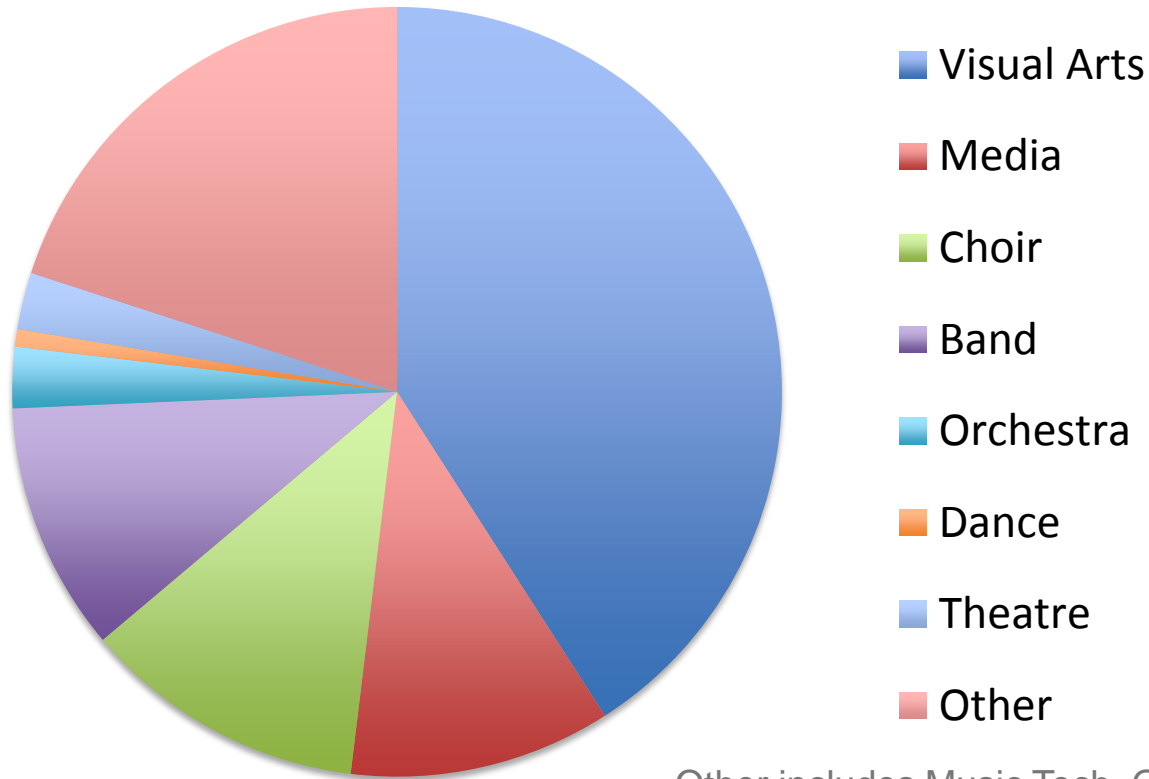
Visual and Performing Arts: Classes/Courses Offerings

K-5 Elementary & K-8 Schools (41 Schools)		Secondary 6-12 (4 Schools)	
General Music	26	General Music	3
Choir	4	Choir	3
Band/Strings	(offered through EDL)	Band	3
Visual Art	23	Orchestra/Strings	3
Media Arts	0	Visual Art	4
Dance	4	Media Arts	4
Theatre	4	Dance	1
		Theatre	3
Middle School Grades 6-8 (5 Schools)		High School 9-12 (6 Schools)	
General Music	5	General Music	0
Choir	4	Choir	6
Band	5	Band	5
Orchestra	4	Orchestra/Strings	4
Visual Art	5	Visual Art	6
Media Arts	2	Media Arts	3
Dance	0	Dance	1
Theatre	1	Theatre	3



Visual and Performing Arts Student: High School Participation

High School Students Participation in the Arts



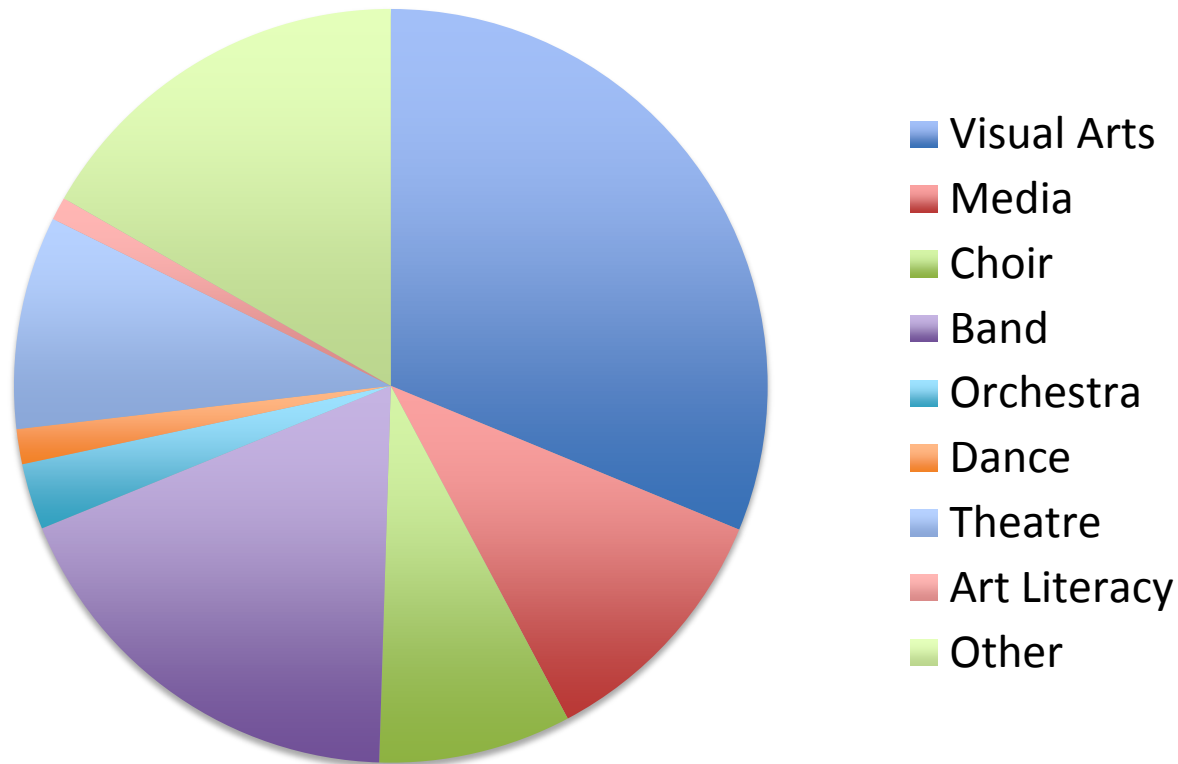
Other includes Music Tech, Guitar & Piano



Visual and Performing Arts

Student: Middle School Participation

Middle School Students Participation in the Arts



Other includes Art & Computers, American Indian Art, Music Explorations, Piano



Visual and Performing Arts: Partners

- ArtStart
- Center for Hmong Arts and Talent
- Children's Theatre
- Compass
- Danza Mexica Cuauhtemoc
- East Side Arts Council
- Flying Foot Dance Forum
- MacPhail Center for Music
- Minneapolis Institute of Art
- Minnesota State High School League
- Minnesota Museum of American Art
- One Voice Mixed Chorus
- Ordway Center for the Performing Arts
- Penumbra Theatre
- Project SUCCESS
- Springboard for the Arts
- St. Paul Civic Symphony
- Tu Dance
- VocalEssence
- VSA Arts
- Walker Art Center
- Walker West Music Academy



Visual and Performing Arts: Desired Facility Upgrades

- Updated performance spaces including lighting, sound, soundproofing, curtains, and seating
- Dedicated Visual Art & 3D exhibition space
- Adequate storage space for musical and visual art equipment and materials
- Open and flexible spaces
- Performance space and stage in all secondary buildings
- Art magnets have sufficient performing and practice space to meet programmatic goals



Extended Day Learning & Summer Term



SPPS Extended Day for Learning (EDL)

- 8,000 K-12 served students in 2013-14
- Variety of programs exist using “shared space”
 - Collaborative After School Sites (CAS)/Hubbs
 - EDL Instrumental Music
 - 21st Century Grant Programs
- Community based organizations support EDL and CAS sites/Hubbs

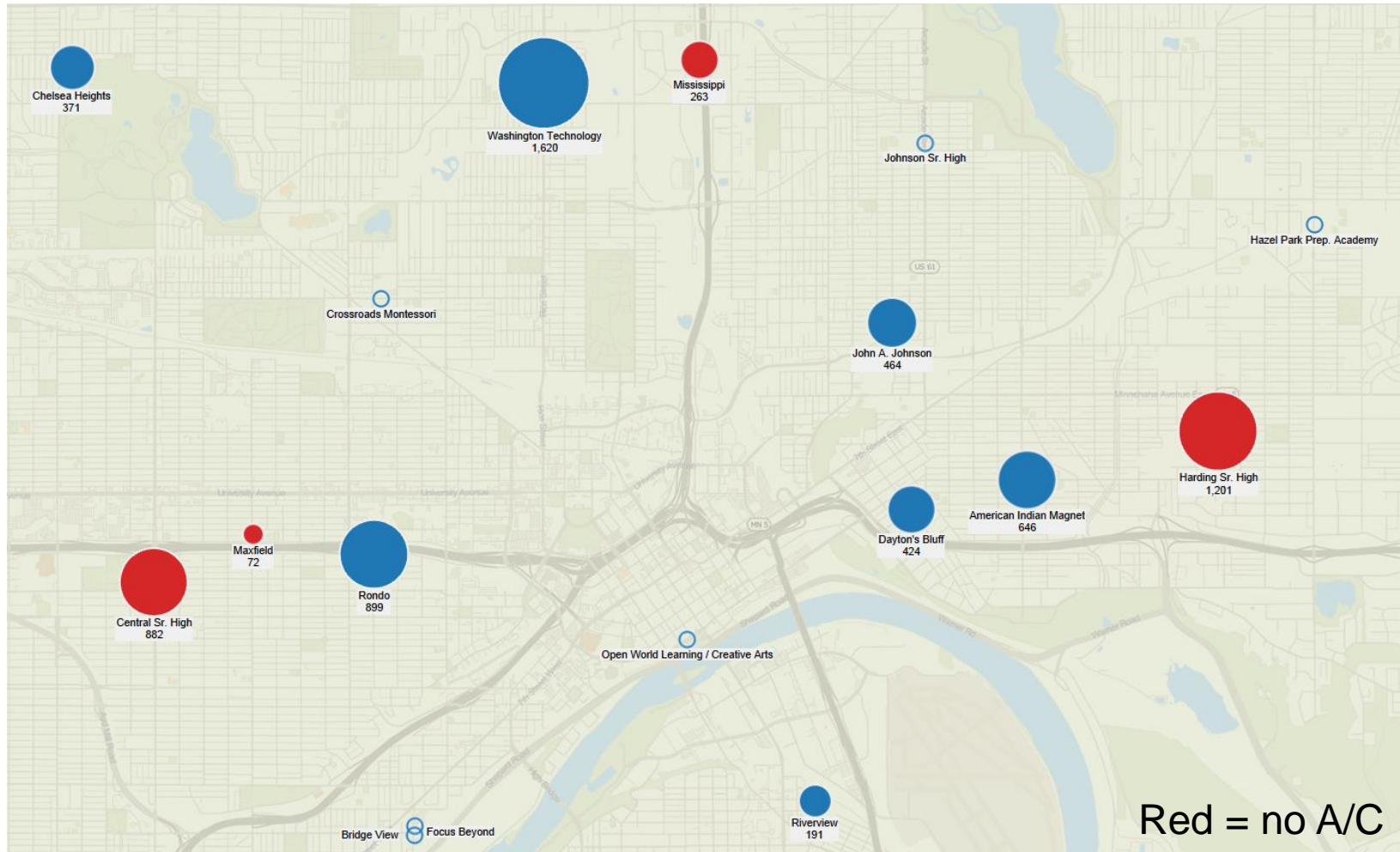


Summer Term (S-Term) 2014

- Mission is to prevent “summer slide”
- Currently 13,000 students enrolled
- Locates at multiple sites across the district
- Variety of community partners
 - Programs include Freedom Schools and Multi-District Programs
- Need for more air conditioned buildings



S-Term 2014: Site with Air Conditioning Enrollment



EDL and S-Term Community Partners

- Girl Scouts
- Boy Scouts
- YMCA
- Urban Roots
- Sanneh Soccer Foundation
- DNR
- National Parks
- Saint Paul Parks and Rec (Battle Creek)
- Climb Theatre
- Ce Tempoxcalli
- Junior Achievement
- Saint Paul Urban Tennis
- YWCA
- Wilderness Inquiry
- Change Inc.
- Penumbra Theatre
- U of MN
- Boys and Girls Club
- Sprockets Network
- Building Blocks
- Eastside Neighborhood Services
- Crossfit Gyms (3 locations)



REFLECTIONS



Out of School Time

Athletics

Community Education



Athletics



Health & Wellness

SPPS supports our students' health by including more opportunities at school for physical activity and better nutrition.

Research demonstrates that eating well and being physically active improves academic achievement. Our goal is to make the *healthy choice the easy choice for our students.*

From: <http://ns.spps.org/wellness>



Athletics: Senior High



- 7 High Schools
- 32 Programs
- 321 Teams

of Boys' Programs

Baseball- 11
Basketball- 21
Cross Country- 7
Football- 16
Golf- 6
Hockey- 5
Nordic Skiing- 4
Soccer- 20
Swimming- 12
Tennis- 14
Track & Field- 14
Wrestling- 14

of COED Programs

Adaptive Athletics- 18
Alpine Skiing- 2

of Girls' Programs

Badminton- 14
Basketball- 20
Cheerleading- 4
Dance Line- 1
Cross Country- 7
Golf- 6
Gymnastics- 8
Hockey- 2
Nordic Skiing- 4
Soccer- 13
Softball- 18
Swimming- 12
Tennis- 12
Track & Field- 14
Volleyball- 20

Athletics: Middle School



- 12 Middle Schools
- 12 Programs
- 132 Teams

of COED Programs

Flag Football- 12
Wrestling- 8

of Boys' Programs

Baseball- 11
Basketball- 12
Soccer- 11
Track & Field- 11

of Girls' Programs

Badminton- 12
Basketball- 12
Soccer- 10
Softball- 10
Track & Field- 11
Volleyball- 12



Athletics: Participation Numbers (Middle and Senior High)

- 2009-2010: 7,376
- 2010-2011: 7,840
- 2011-2012: 7,940
- 2012-2013: 8,016
- **2013-2014: 8,376**

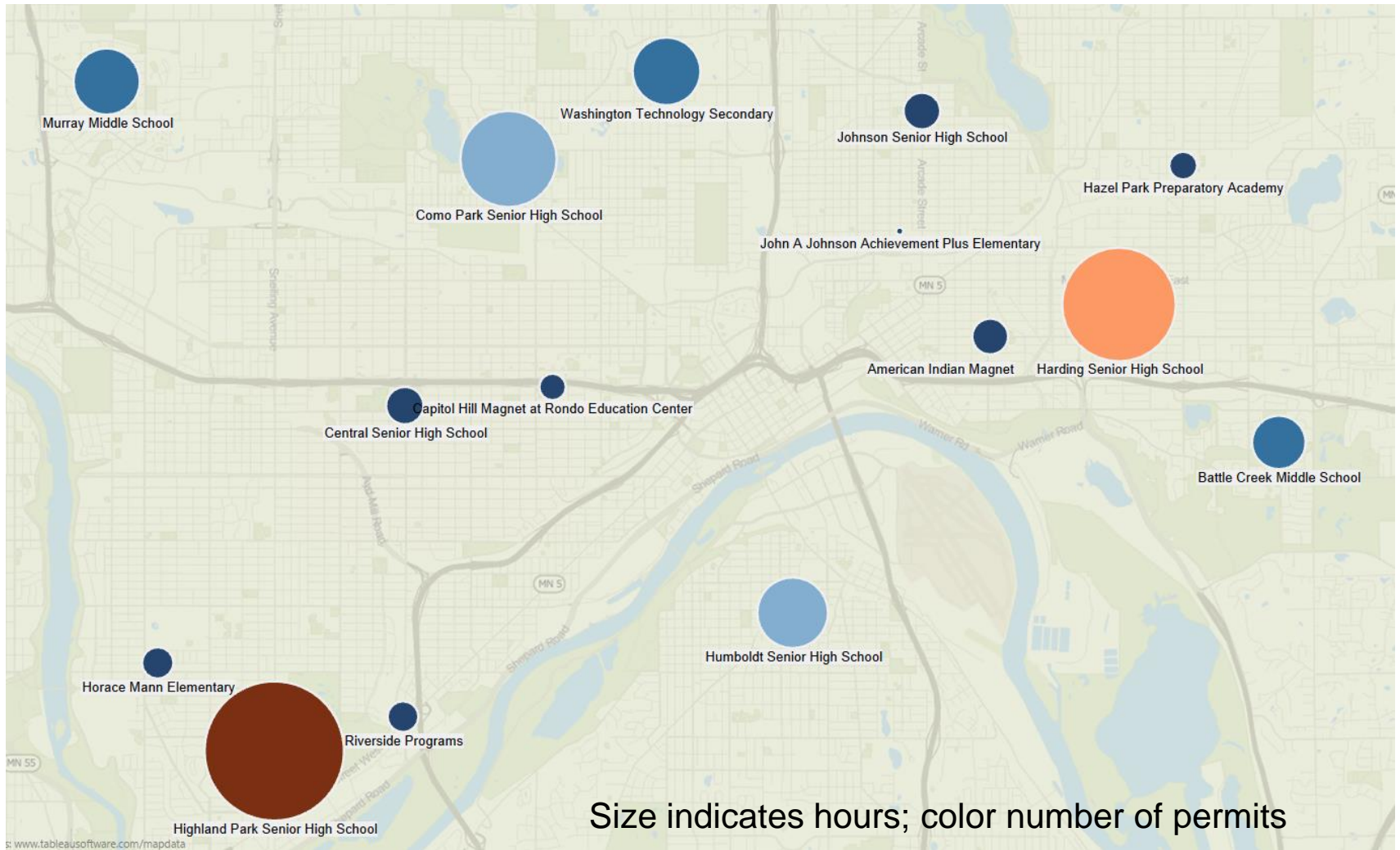


Athletics: Partnerships

- Community organizations
- The Dunkers
- Minneapolis Public Schools
- Minnesota Twins
- Minnesota State High School League
- Minnesota Vikings
- Ramsey County
- Saint Paul Parks & Recreation
- Saint Paul Public Golf Courses



Athletics: Community Permit Users



Athletics: Existing Facilities

	Stadium	Football/Soccer field	Football	Artificial Turf	Baseball	Softball	Gymnasium	Track	Pool	Tennis
Central Senior High	X	X		X		City	X	X	X	City
Como Park Senior High			X		X	X	X	X	X	X
Harding Senior High	X	X		X	X	X	X	X	X	X
Highland Senior High School	X	X			X	X	X	X	X	X
Humboldt Secondary		X		X	X	X	X		X	X
Johnson Senior High		X		X	X		X	X	X	X
Washington Technology		X				X	X	X	X	X



Athletics: Desired Facilities Upgrades

- Parity of facilities between programs
- Competitiveness with suburban districts
- Quality and well maintained facilities
- Additional soccer, baseball and softball fields
- Add indoor track facilities
- Add football practice fields



Community Education

Participation

Adult Basic Education

Adult Enrichment & Adult Special Needs

Youth Enrichment & After-School

Discovery Club Child Care

Early Childhood Family Education

Community Education Partners



Community Education: 2012-13 Participation

- Adult Basic Education: 6,000
- Adult Enrichment & Special Needs: 10,000*
- Discovery Club Child Care: 2,200*
- Early Childhood Family Education: 3,000
- Youth Enrichment: 26,500*

= Nearly 48,000 participants annually

**May contain duplicate counts, as participants can attend multiple sessions*



Adult Basic Education

- **Serves:** 6,000 adults annually
- **Located:**
 - Hubbs Center for Lifelong Learning
 - East Side Learning Hub @ Harding
 - Outreach Sites
- **Includes:** English classes, Career & College prep, GED testing & technology skill-building
- **Needs:** Computer labs and classrooms appropriate for adult learning in dedicated spaces morning, afternoon and evenings



Adult Enrichment & Adult Special Needs

- **Serves:** 10,000 adults annually
- **Located:** District Admin. and accessible middle and high schools, and other community locations
- **Includes:** Fitness, arts, performance, culinary, hobby and personal development classes
- **Needs:** Exercise/gym/pools, cooking, visual and performing art studios, sewing, woodworking, computer labs, classrooms, office and outdoor spaces primarily in evenings and dedicated space during the day



Youth Enrichment & After-School

- **Serves:** 26,500 youth annually
- **Located:** 6 high schools, 10 middle and 16 elementary schools and other community locations
- **Includes:** After-school, evenings, weekends and summer classes in fitness, arts, performance, culinary, hobby and personal development
- **Needs:** Exercise/gym/pools, cooking, visual and performing art studios, sewing, woodworking, computer labs, classrooms, and outdoor spaces during out-of-school time

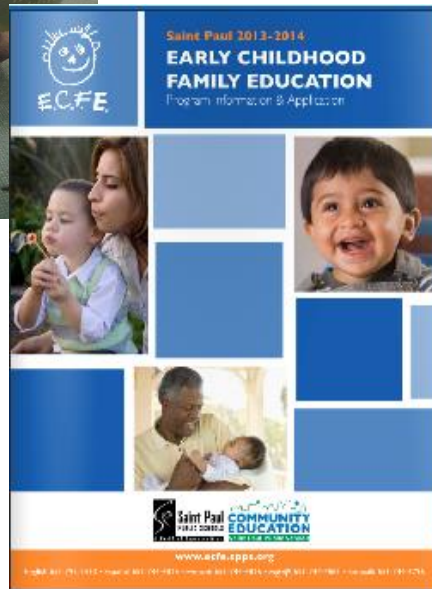


Discovery Club Child Care

- **Serves:** over 2,200 students annually
- **Located:** 15 District elementary schools; available to all K-5 students through transportation ‘hub’ model
- **Includes:** Before school, after school, non-school day, and summer care
- **Needs:** Appropriate learning space for PreK-5 graders during out-of-school time



Early Childhood Family Education



- **Serves:** 3,000 families annually
- **Located:** 10 school and community sites
- **Includes:** Parent education, birth-3 education and family learning
- **Needs:** Early learning appropriate space during the daytime and some evenings



Community Education Partners

3M/First Lego League
3rd Lair Skate Park
Ain Dah Yung Center
American Indian Family Center
AmeriCorps
Area Learning Centers
Art Start
Athletes Committed to Educating Students
Big Brothers, Big Sisters
Bolder Options
Cycles for Change
Computer Explorers
East Metro Integration District 6067
East Side Arts Council
Fixity
Free the Children
Get Ready
Girl Scouts of MN and WI River Valleys
Habitat for Humanity
Hmong/Karen American Partnership

Homegrown LaCrosse EOM
Illusion Theater
In Progress
JK Movement
Junior Achievement
Keys for Kids
Language Sprout
Leonardo's Basement
Lewis Sports Foundation
Living Proof
Macalester College
Mad Science/Schoolhouse Chess of MN
Minnesota Agency on Area Aging
Midwest Expedition Camp
Minnesota Math/ReadingCorps
Minnesota Zoo
MN Computer for Schools
Mississippi Watershed
Out for Equity – SPPS
Outward Bound
Playworks

Saint Paul Conservatory of Music
Salvation Army
Science Museum of Minnesota
SPPS Athletics
St. Paul Area Council of Churches
St. Paul City Ballet
St. Paul Jewish Community Center
St. Paul Parks & Recreation
St. Paul Police Department
St. Paul Public Schools Foundation
Students Today, Leaders Forever
The Lower Phalen Creek Project
U of MN African American Studies
U of MN Cornercopia
U of MN Extension-Cooking Matters
U of MN Urban 4H
Urban Boat Builders
Urban Debate League
Voyager Outward Bound



REFLECTIONS



Support Services

Nutrition Services

Transportation

Safety and Security Management

Technology Services

Facilities



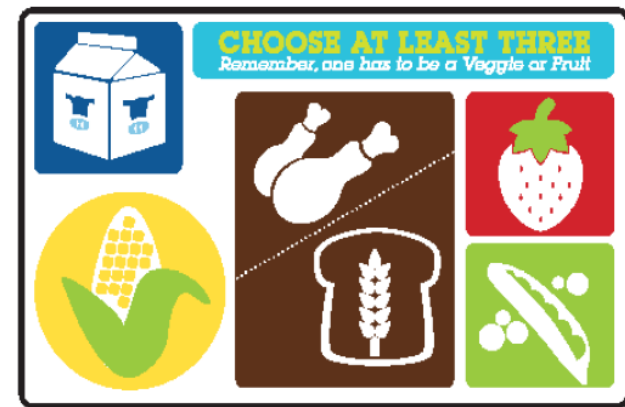
Nutrition Services



Nutrition Services

- Nutrition Services provides Healthy, locally- sourced and ethnically diverse menu options for students
- The department offers breakfast and lunch as well as fresh fruit and vegetable snacks and after school snacks to students

**GREAT TRAY
GREAT DAY!!**



Nutrition Services: At a Glance

- Serves 50,000 meals per day (20,000 breakfasts and 30,000 lunches)
- Serves 3.8 million breakfasts and 5 million lunches per year
- 1 million apples and 1.6 million bananas were served this school year
- Breakfast is offered to all students free of charge
- The department has 1 centralized kitchen, which includes a full scale bakery.



Nutrition Services: Looking Ahead

- Expanding the district's Farm to School program
- Next school year will introduce MN Thursday's, a program that will feature a menu with all local items one Thursday a month
- Expanding the Breakfast 2 Go program to include new hot items

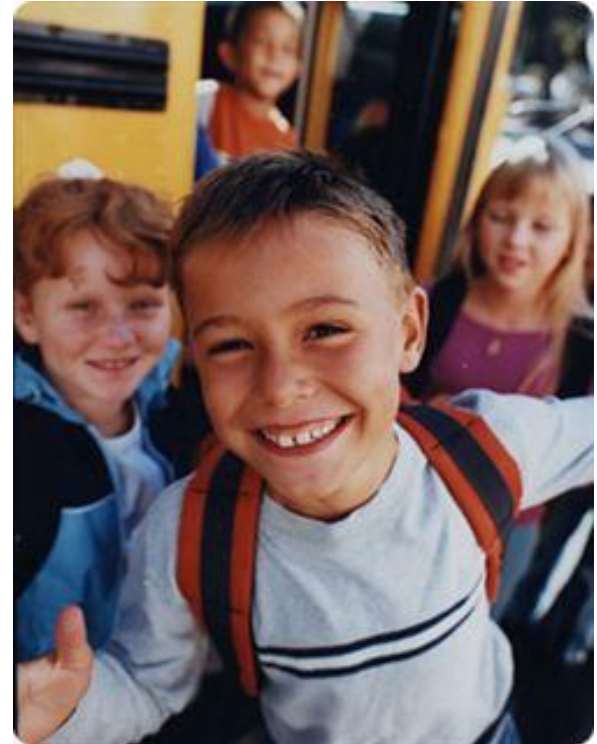


Transportation



Transportation

- Transportation provides student transportation service to over 39,500 public, non-public, and charter school students attending over 179 schools and programs



Transportation: At a Glance

- 30,510 students are eligible for school transportation
- 4,772 students are ineligible for school transportation
- 340 bus routes are driven per day
- SPPS has an intensive school patrol program to assist students who walk to/from school
- SPPS contracted 312 school buses from five private vendors during school year 2012/2013



Transportation: Additional Services Provided

- Project Reach/Homeless Transportation
 - Approx. 1,600 students experiencing homelessness were transported during the 2013/2014 school year
- Special Needs Transportation
 - SPPS provides transportation to approximately 1,190 students requiring assistive equipment or specialized ride or location due to a disability
 - SPPS owns and operates 31 school buses that primarily transports students with disabilities
- Field/Charter Trips
 - SPPS provides transportation for over 6,500 field, sports and charter trips per school year



Transportation: Guiding Principles



State of Minnesota:

- Minnesota State Law requires that students who reside 2 miles or more from their assigned school shall be eligible for transportation



Transportation: Guiding Principles

SPPS:

- Transportation is to provide the following students:
 - Grades 6-12 who reside in excess of 1 mile from their assigned school
 - Grades pre-k through 5 who reside in excess of 1/2 mile from their assigned school
 - Pre-k students during midday hours, regardless of the distance of their assigned school
 - Students who encounter extraordinary hazardous traffic conditions as determined administration



Safety and Security Management



Safety and Security Management

- The Office of Security and Emergency Management (SEM) reviews and improves district wide safety and emergency planning
- Functions of SEM include:
 - Supervision of security staff
 - Staff and student resource support of crisis events such as severe weather, a flu epidemic, or threatened violence
 - Coordination work with police, fire, and emergency responders



Safety and Security Management: Looking Ahead

- Beginning Winter of 2013 and ending Fall 2014, SPPS will be installing a new district wide security system.
- The new security system will feature:
 - All elementary and middle school sites will have a new security intercom station added at their main building entrance
 - All Discovery Club sites will have a new security intercom station for building entrance
 - Card Readers access point will be placed at all: Main Staff Entry Doors, Loading Dock/Delivery Entry, and Playground Entry Doors (where applicable)
 - All sites will have new glass breaks, door contacts and motion detectors



Technology Services



Technology Services

- Technology Services is an integral part of classroom instruction, business operations, and communication within Saint Paul Public Schools.
- Technology Services utilizes the following to support the district:
 - A central Service Desk
 - Certified: service desk technicians, field technicians, network technicians & application support specialists



Technology Services: At a Glance

- By the end of the summer, every learning space in the District will have robust wireless access consistent with district best practices
- The district has a complete fiber optic connected wide area network
- The district is always working on ways to manage network traffic better and more efficiently

During the school year approx.
30,000 + devices are on the network at a given time



Facilities Department



Facilities Department

The Facilities Department is responsible for the cleaning, maintenance, grounds, health and safety, facility planning, and construction of the district's:

- 7.3 million square feet
- 465 acres of land
- 71 buildings
- 3 leased facilities

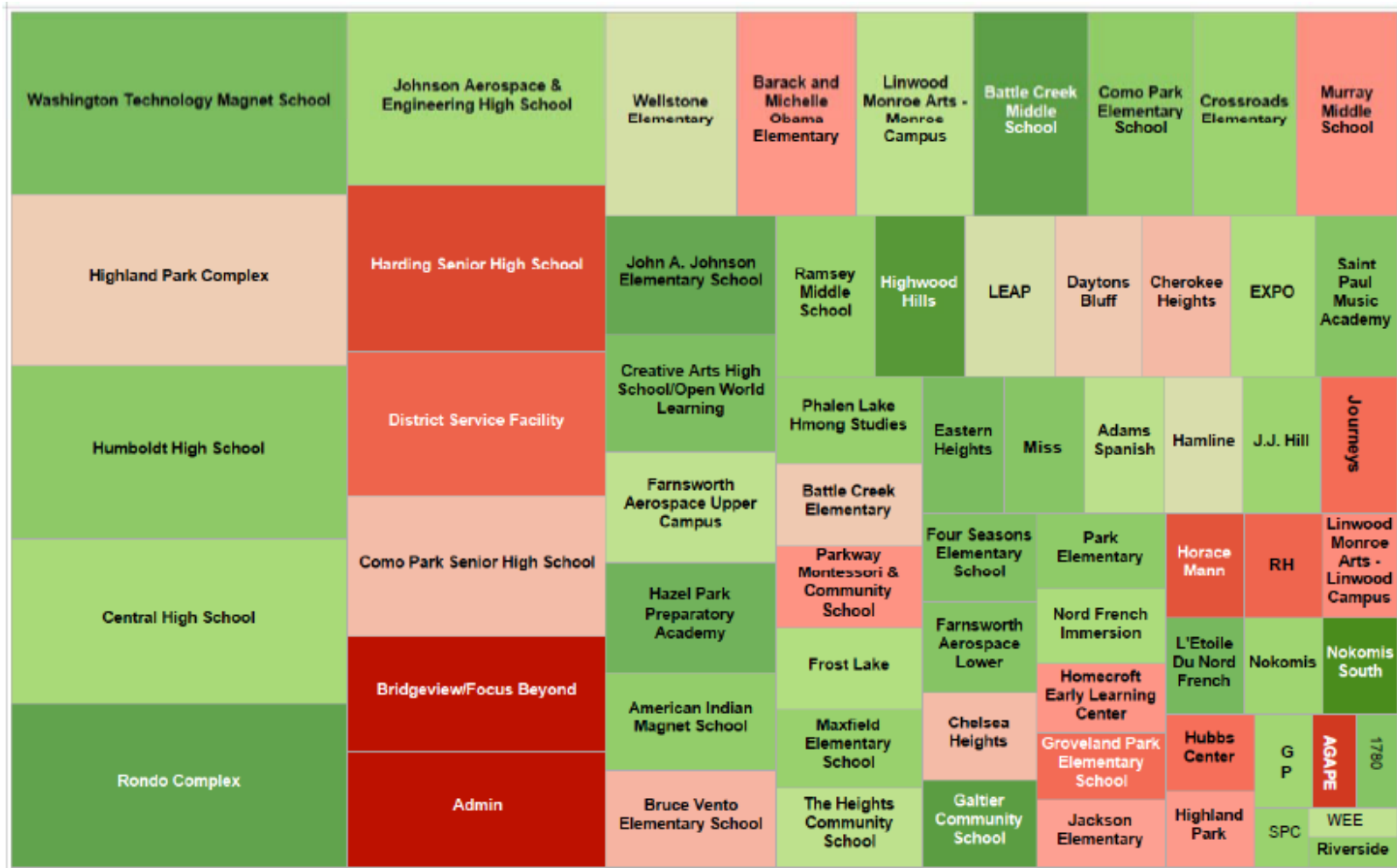


Facilities Department: At a Glance

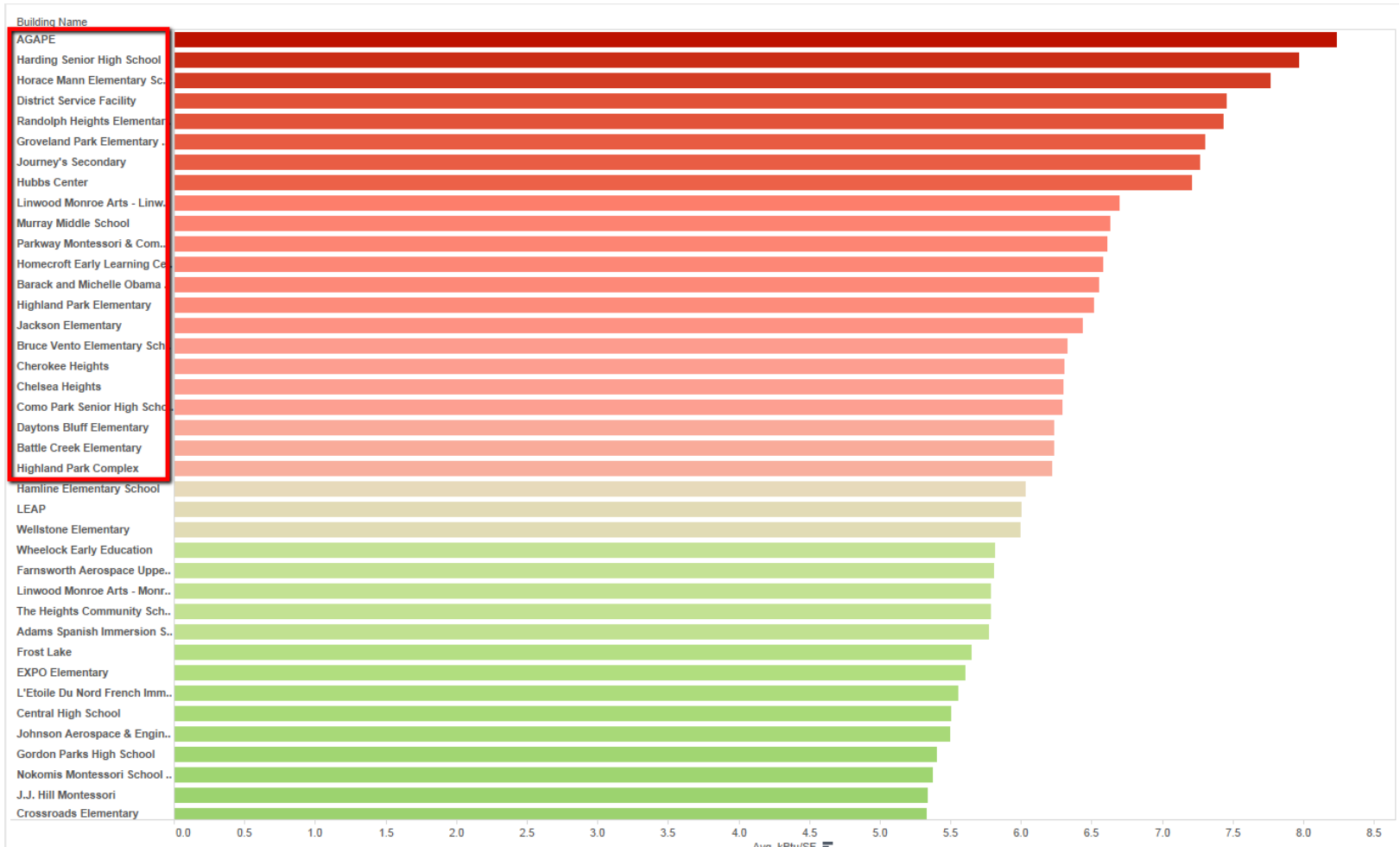
- Building Maintenance
- Custodial Services
- Distribution
- Energy & Utilities
- Environmental Health & Safety
- Facility Planning
- Furniture
- Grounds Services
- Property Management
- Waste Management & Recycling



Facilities Department: Energy Use Intensity

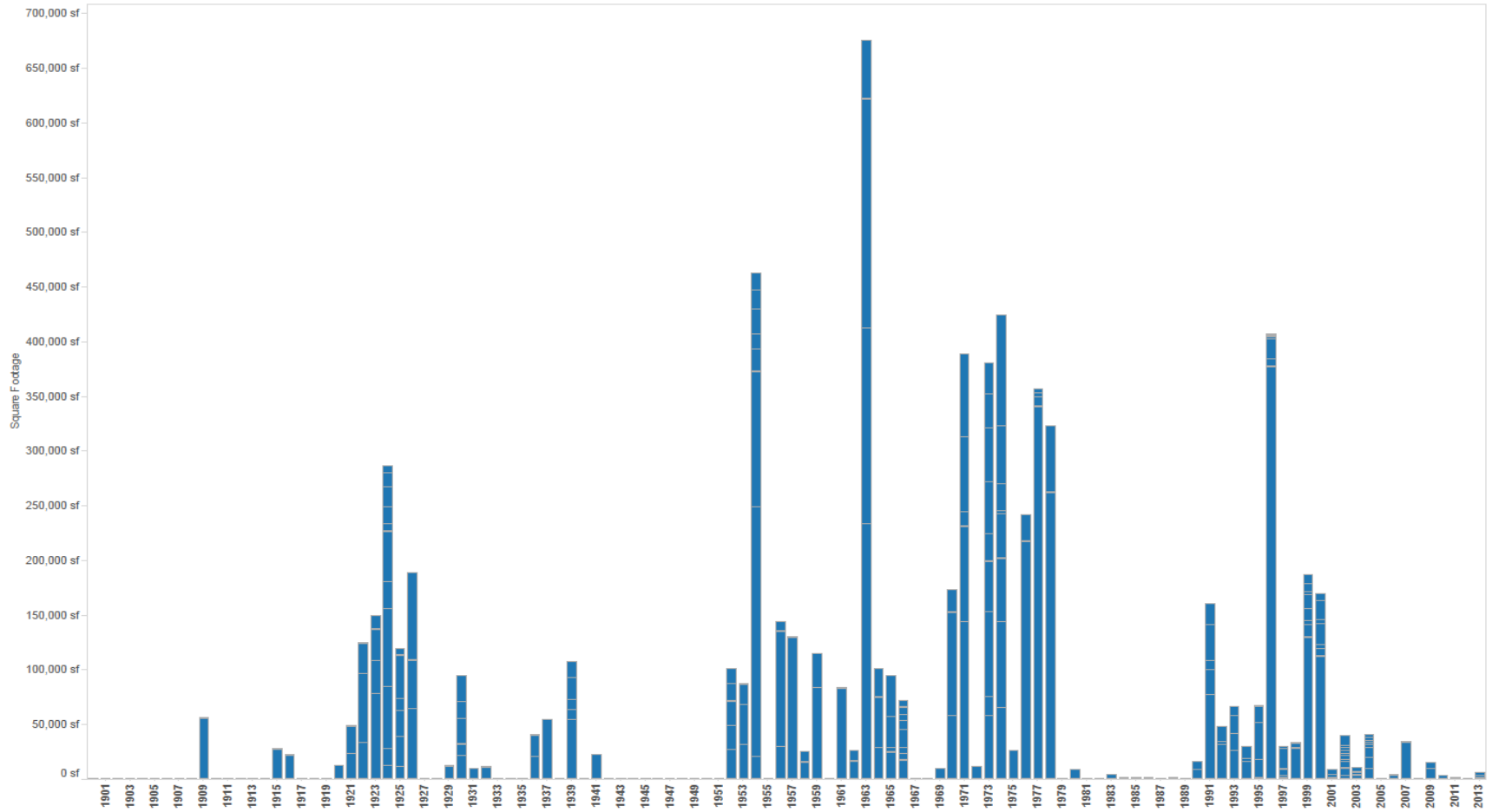


Facilities Department: Energy Use Intensity



Facilities Department: Age of Buildings

Portfolio Square Footage by Year



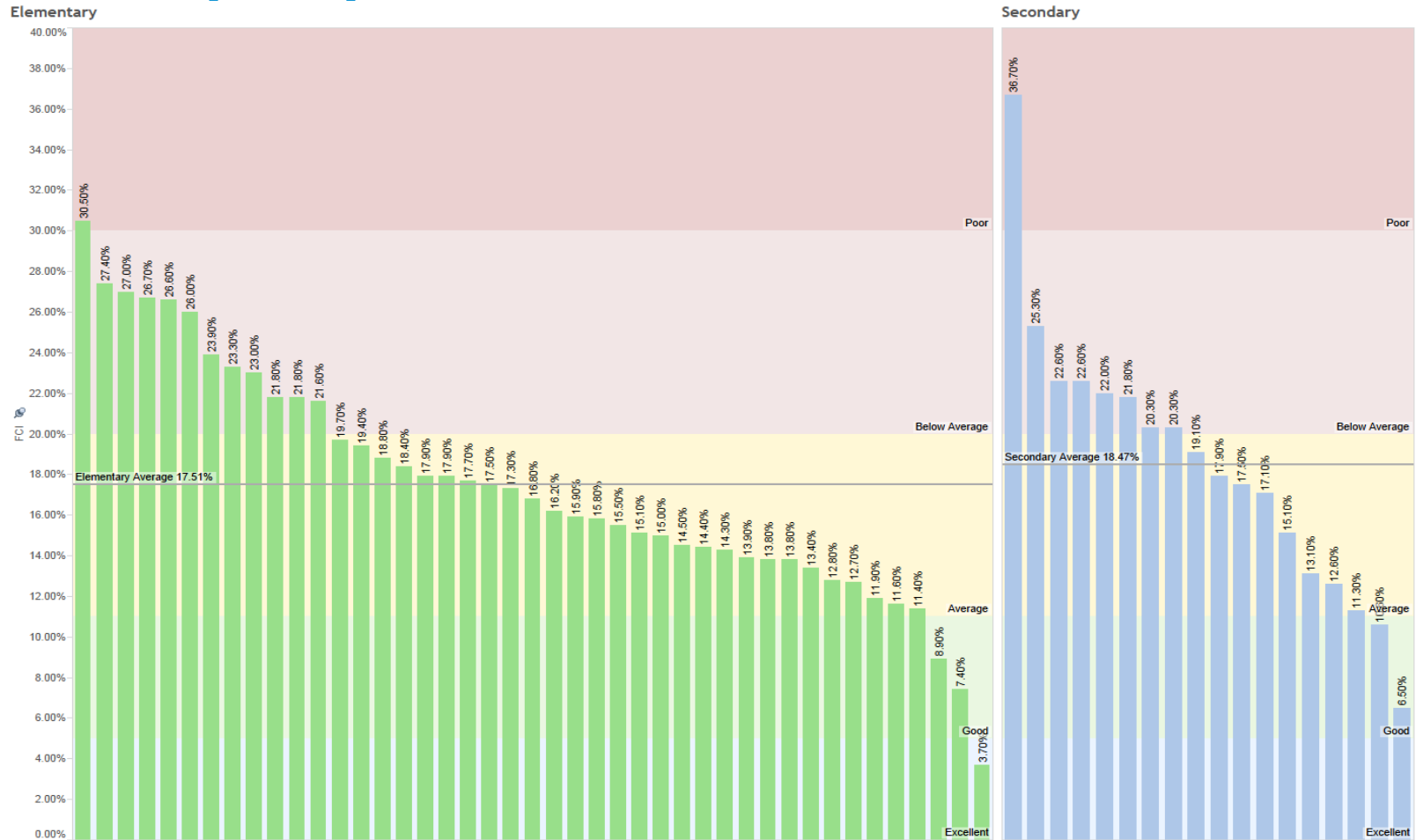
1920s

1950s

1970s

1990s

Facilities Department: Facility Condition Index (FCI)*



* FCI calculation formula currently being evaluated; numbers will change



Facilities Department: Looking Ahead

- Next school year Facilities will be updating the district's recycling program to improve its recycling rate from 34% to 60% by 2020
- The updated program will include increasing the types of materials collected and expanding food waste recycling to all school cafeterias



REFLECTIONS

Next Steps

