

# Cherokee Heights Elementary School

694 Charlton Street

## Project Summary:

---

Cherokee Heights Elementary is about to start its exciting transition to a Montessori learning model. The school is connected to the Baker Center which is currently being used by the YMCA. The YMCA also uses the Pool when school is not in session. The current path from the Baker Center to the Pool requires community members to circulate deep into the school space. New Locker Rooms and circulation provide a clearer route and more secure school zone.

Relocating the Cafeteria and Servery provides a visual connection and shorter route to recess. The larger Gym space can be used for physical education and assemblies. A reconfigured Loading Dock and updated Science / Art Flex Labs are located in the footprint of the existing Servery.

Relocating the elevator and stair provides access to all floor levels. Additionally, a more efficient office flow is created in the staff space. General Classroom spaces are remodeled and reconfigured for larger classrooms to support the Montessori style of learning. Remodeling the Media Center provides zoning and sound isolation. A Maker Space provides students with a flexible lab space for learning activities.



## Issues Identified By School Community In 2015

---

1. Location of Gym / Cafeteria
2. Courtyard / Commons is a Difficult Link
3. Library (Sound, Size, Flexible, Loud Zone)
4. YMCA Link to Pool
5. Courtyard Usage (Patio Furniture, Safety, Playground)
6. Elevator Upgrade
7. Classroom Size / Break-out Space and Acoustics
8. Natural Light
9. Office Reconfiguration (Conference Space)
10. Staff Collaboration Space
11. Flex Space (Art/Science)
12. Air Conditioning

<b>Grade Levels:</b>	<b>PK-5</b>
<b>SY 2014/15 Enrollment:</b>	<b>298</b>
<b>Design Enrollment:</b>	<b>383</b>

## General Notes:

---

Existing utilization shown is for School Year 2014-2015

The Conceptual Utilization Plans are exploratory rather than actual construction plans and represent the design at one moment in time, which will change as the design and funding process progress.

The Conceptual Plans are included as a way to organize scopes of work into logical, efficient and meaningful projects. There is no prioritization implied in a work scope title (e.g. "Work Scope A" is not necessarily the most critical work to be done).

The plans in this document are not comprehensive of the entire building's needs as maintenance and replacement of existing building systems such as roofs and mechanical systems are omitted to maintain graphic clarity of the overall vision generated during the Facilities Master Plan Process.

Formal zoning reviews have not been undertaken for the proposed work shown in these plans. A review with zoning and building code authorities will occur once the funding is secured.

# Cherokee Heights Elementary School

## Site Concept



**Legend:**

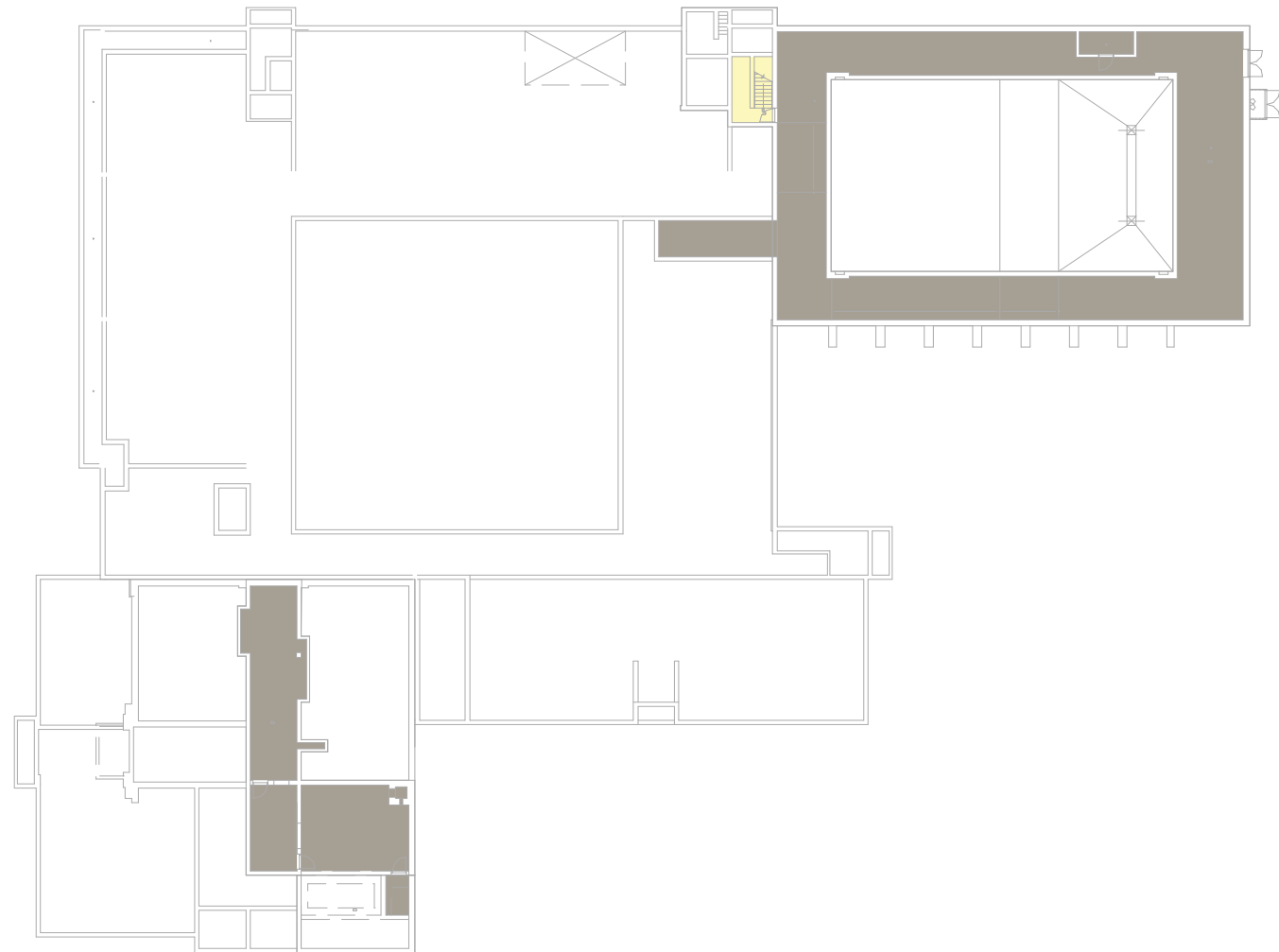
- S1. New landscaping at existing entry.
- C1. New entry canopy
- C2. Proposed location for playground relocation / hard surface play.

- - - Property Line
- ▲ Main Entry
- ▲ Secondary Entry
- ▲ Service Entry

- New Landscape and Playground
- Parking and Hardscape
- New Building Construction

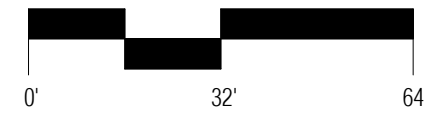
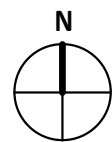
# Cherokee Heights Elementary School

## Existing Utilization



- General Learning
- Science
- Performing Arts
- Career & Tech Education
- Media Center
- Dining
- Athletics
- Circulation
- Facilities Support
- Administration
- Art

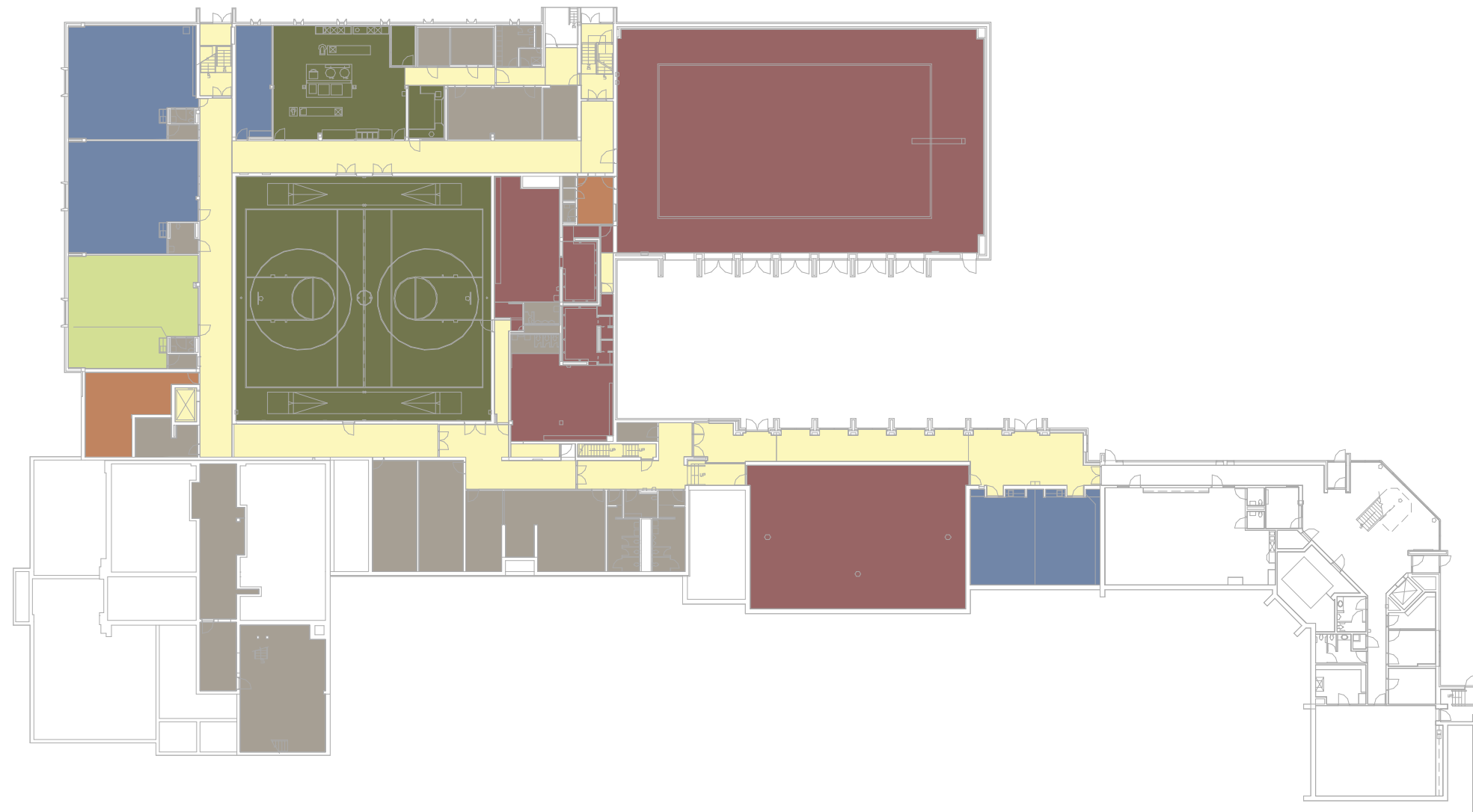
Lower Level





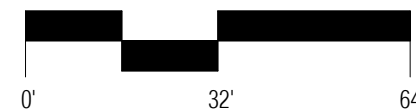
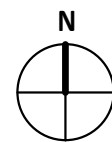
# Cherokee Heights Elementary School

## Existing Utilization



- General Learning
- Science
- Performing Arts
- Career & Tech Education
- Media Center
- Dining
- Athletics
- Circulation
- Facilities Support
- Administration
- Art

Main Level

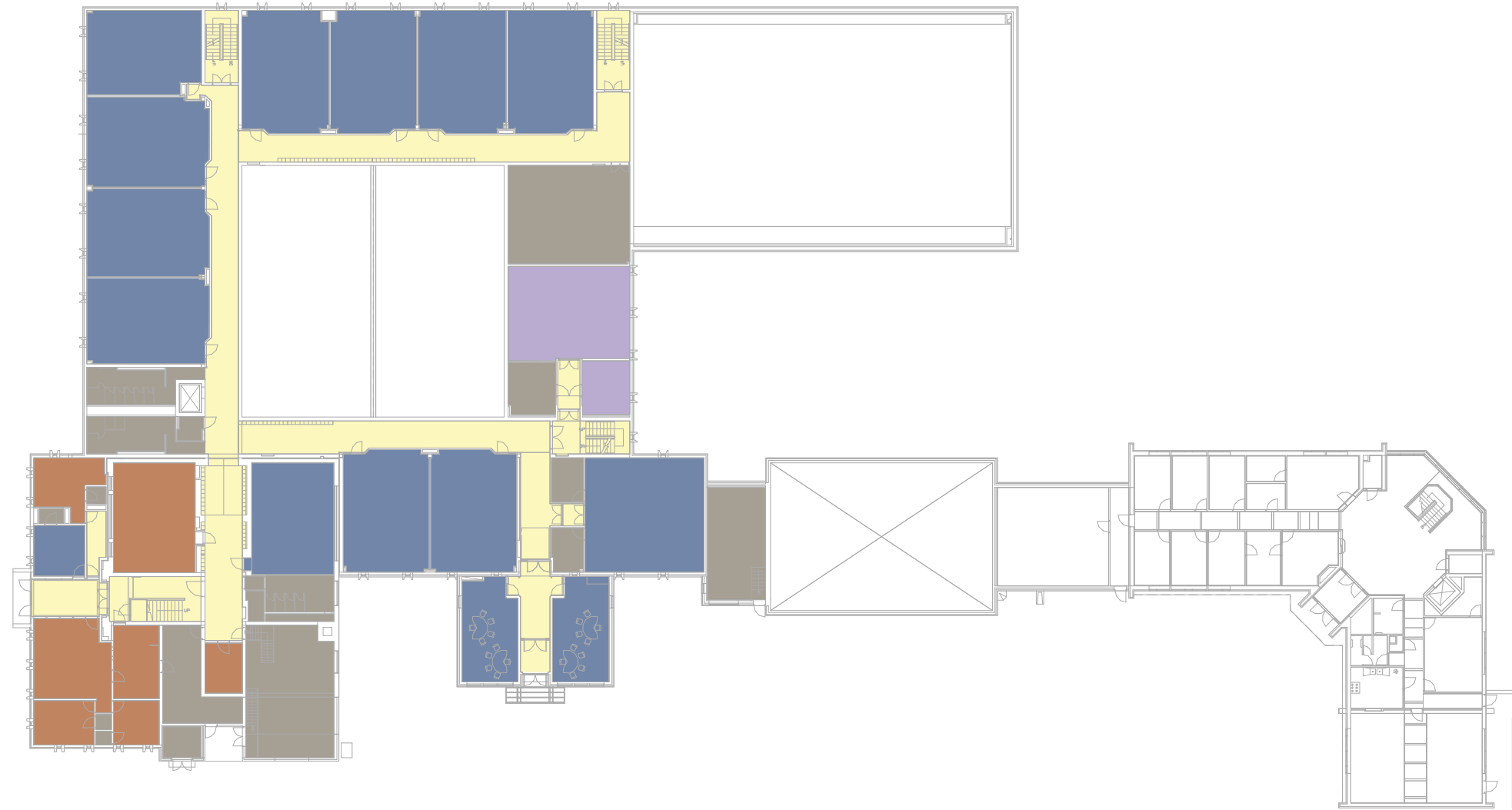


2070

3.2

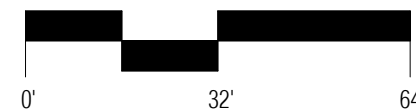
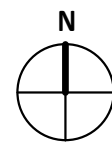
# Cherokee Heights Elementary School

## Existing Utilization



- General Learning
- Science
- Performing Arts
- Career & Tech Education
- Media Center
- Dining
- Athletics
- Circulation
- Facilities Support
- Administration
- Art

Second Level

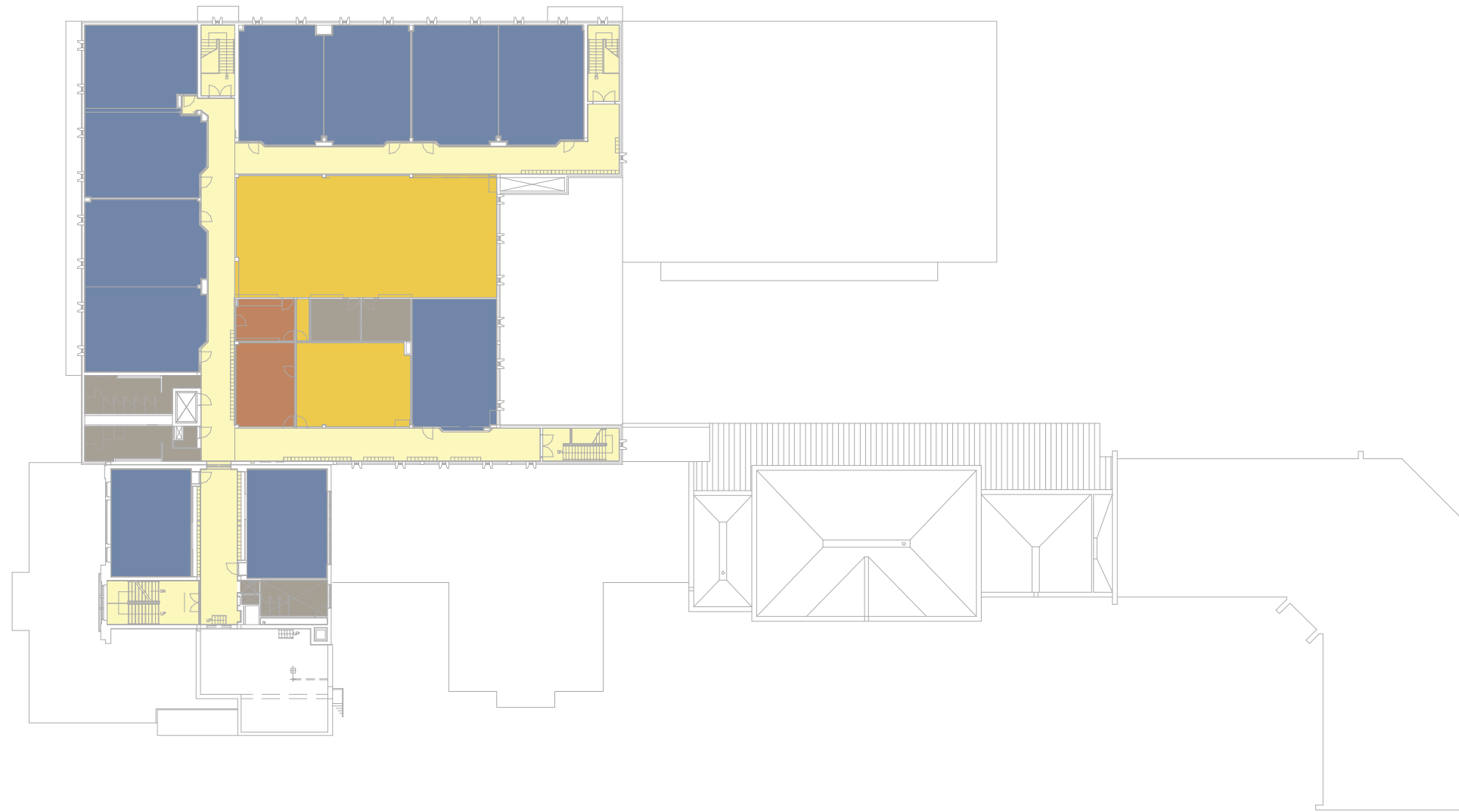


2070

3.3

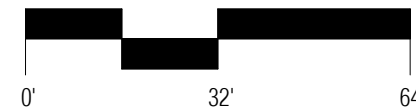
# Cherokee Heights Elementary School

## Existing Utilization



- General Learning
- Science
- Performing Arts
- Career & Tech Education
- Media Center
- Dining
- Athletics
- Circulation
- Facilities Support
- Administration
- Art

Third Level

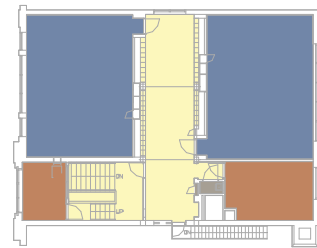


2070

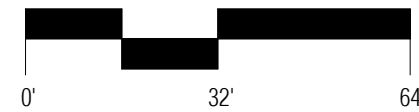
3.4

# Cherokee Heights Elementary School

## Existing Utilization



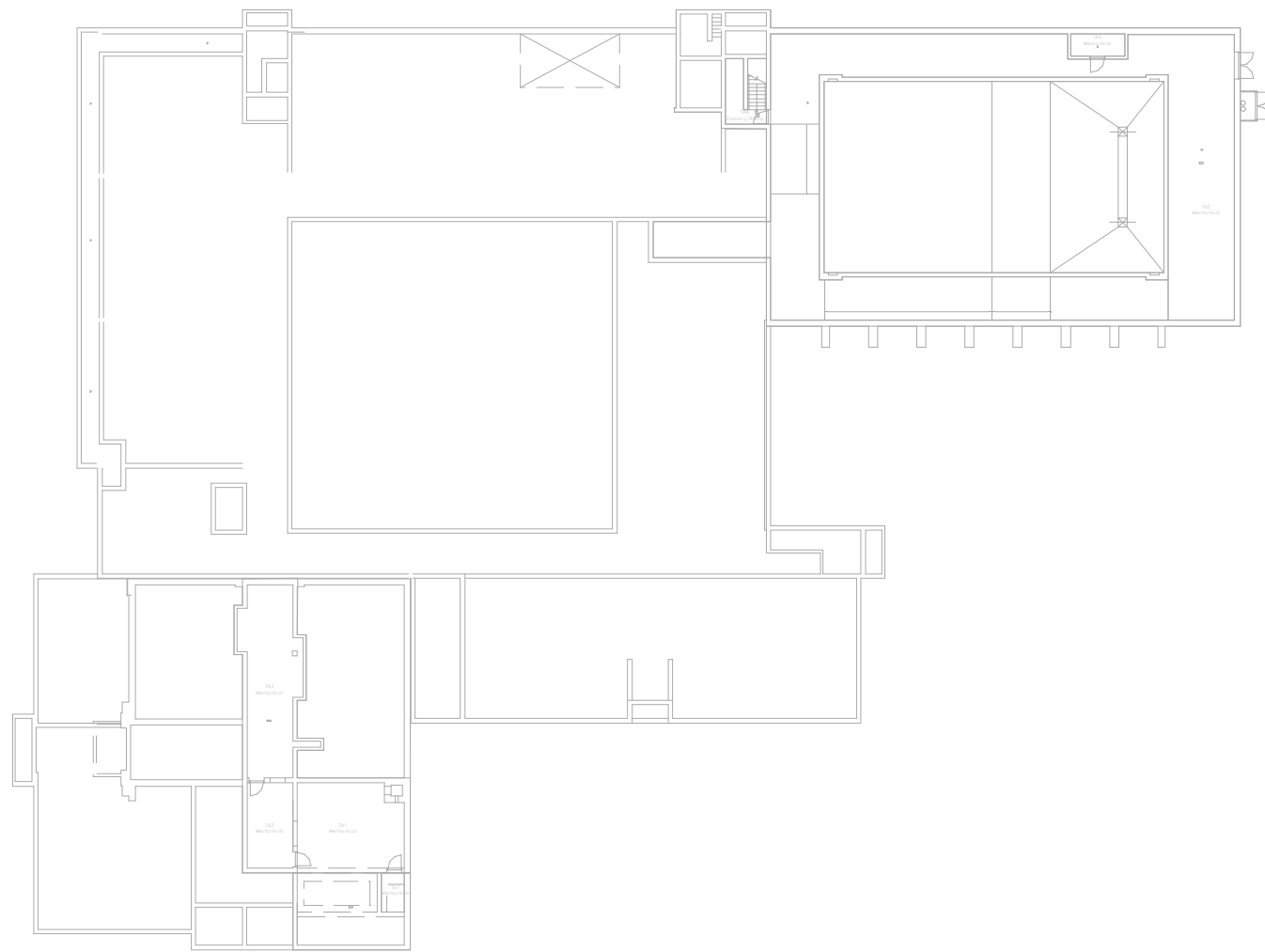
- General Learning
- Science
- Performing Arts
- Career & Tech Education
- Media Center
- Dining
- Athletics
- Circulation
- Facilities Support
- Administration
- Art



Forth Level

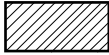
















# Cherokee Heights Elementary School

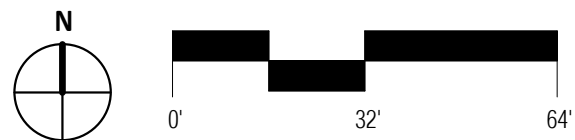
## Conceptual Utilization Plan



**Legend:**

- C1. Provide Early Learning Classrooms.
- C2. Provide General Education Classrooms.
- C3. Provide Computer and Science / Art / Flex Labs.
- C4. Reconfigure Locker Rooms and provide link between Baker Center and Pool.
- C5. Relocate Cafeteria, Kitchen, and Servery. Raise Gym Floor to Match Adjacent Rooms
- C6. Provide Elevator with full building access.
- C7. Provide Stairs as indicated.
- C8. Relocate / Rebuild / Reconfigure Admin as indicated.
- C9. Remodel Library / Media Center and provide zoning and sound isolation.
- C10. Provide Maker Space.
- C11. Renovate Existing Receiving Area
- C12. Refinish Existing Gym/Cafeteria
- C13. New Lockdown Line w/Access Control

	Demolition / Removal		General Learning
	New / Existing		Science
	Property Line		Performing Arts
	Main Entry		Career & Tech Education
	Secondary Entry		Media Center
	Service Entry		Dining
			Athletics
			Circulation
			Facilities Support
			Administration
			Art

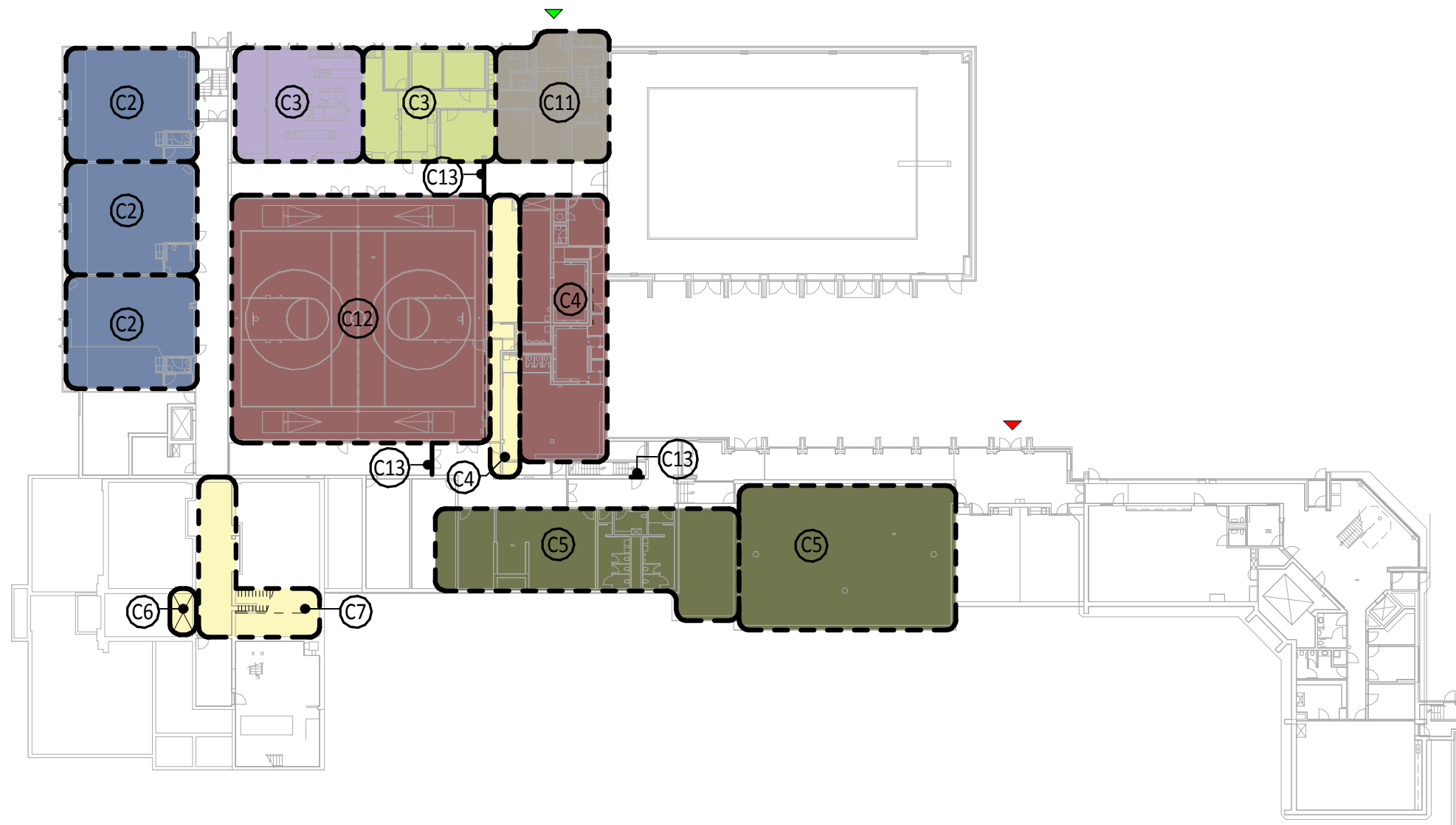


Lower Level














# Cherokee Heights Elementary School

## Conceptual Utilization Plan



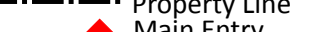





**Legend:**

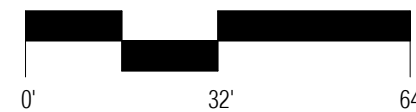
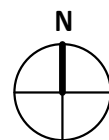
- C1. Provide Early Learning Classrooms.
- C2. Provide General Education Classrooms.
- C3. Provide Computer and Science / Art / Flex Labs.
- C4. Reconfigure Locker Rooms and provide link between Baker Center and Pool.
- C5. Relocate Cafeteria, Kitchen, and Servery. Raise Gym Floor to Match Adjacent Rooms
- C6. Provide Elevator with full building access.
- C7. Provide Stairs as indicated.
- C8. Relocate / Rebuild / Reconfigure Admin as indicated.
- C9. Remodel Library / Media Center and provide zoning and sound isolation.
- C10. Provide Maker Space.
- C11. Renovate Existing Receiving Area
- C12. Refinish Existing Gym/Cafeteria
- C13. New Lockdown Line w/Access Control

	<b>General Learning</b>
	<b>Science</b>
	<b>Performing Arts</b>
	<b>Career &amp; Tech Education</b>
	<b>Media Center</b>
	<b>Dining</b>
	<b>Athletics</b>
	<b>Circulation</b>
	<b>Facilities Support</b>
	<b>Administration</b>
	<b>Art</b>

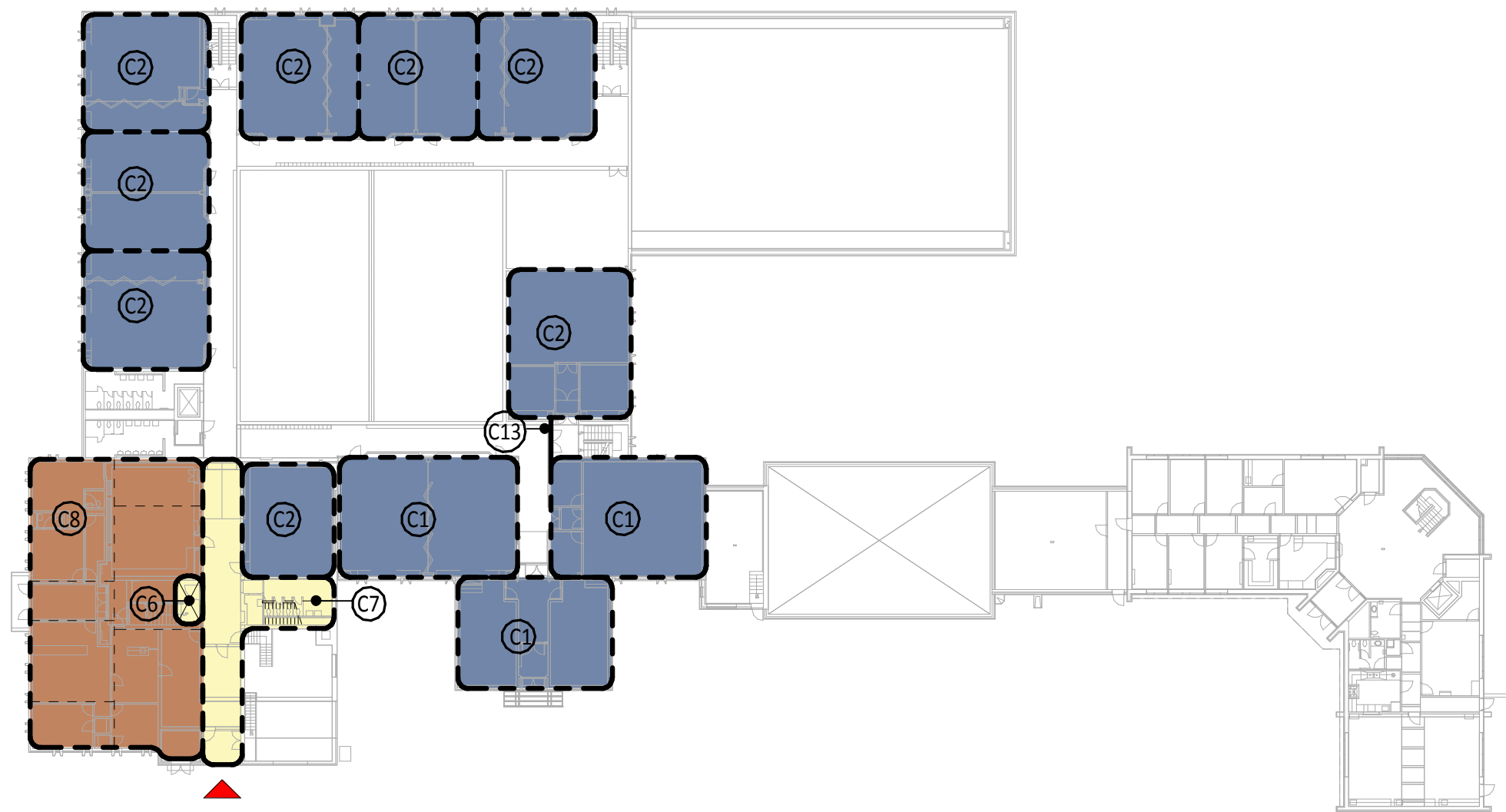
	Demolition / Removal
	New / Existing
	Property Line
	Main Entry
	Secondary Entry
	Service Entry

Main Level














# Cherokee Heights Elementary School

## Conceptual Utilization Plan



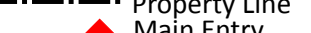





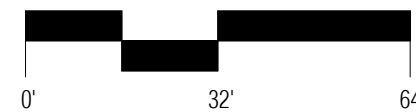
**Legend:**

- C1. Provide Early Learning Classrooms.
- C2. Provide General Education Classrooms.
- C3. Provide Computer and Science / Art / Flex Labs.
- C4. Reconfigure Locker Rooms and provide link between Baker Center and Pool.
- C5. Relocate Cafeteria, Kitchen, and Servery. Raise Gym Floor to Match Adjacent Rooms
- C6. Provide Elevator with full building access.
- C7. Provide Stairs as indicated.
- C8. Relocate / Rebuild / Reconfigure Admin as indicated.
- C9. Remodel Library / Media Center and provide zoning and sound isolation.
- C10. Provide Maker Space.
- C11. Renovate Existing Receiving Area
- C12. Refinish Existing Gym/Cafeteria
- C13. New Lockdown Line w/Access Control

	<b>General Learning</b>
	<b>Science</b>
	<b>Performing Arts</b>
	<b>Career &amp; Tech Education</b>
	<b>Media Center</b>
	<b>Dining</b>
	<b>Athletics</b>
	<b>Circulation</b>
	<b>Facilities Support</b>
	<b>Administration</b>
	<b>Art</b>

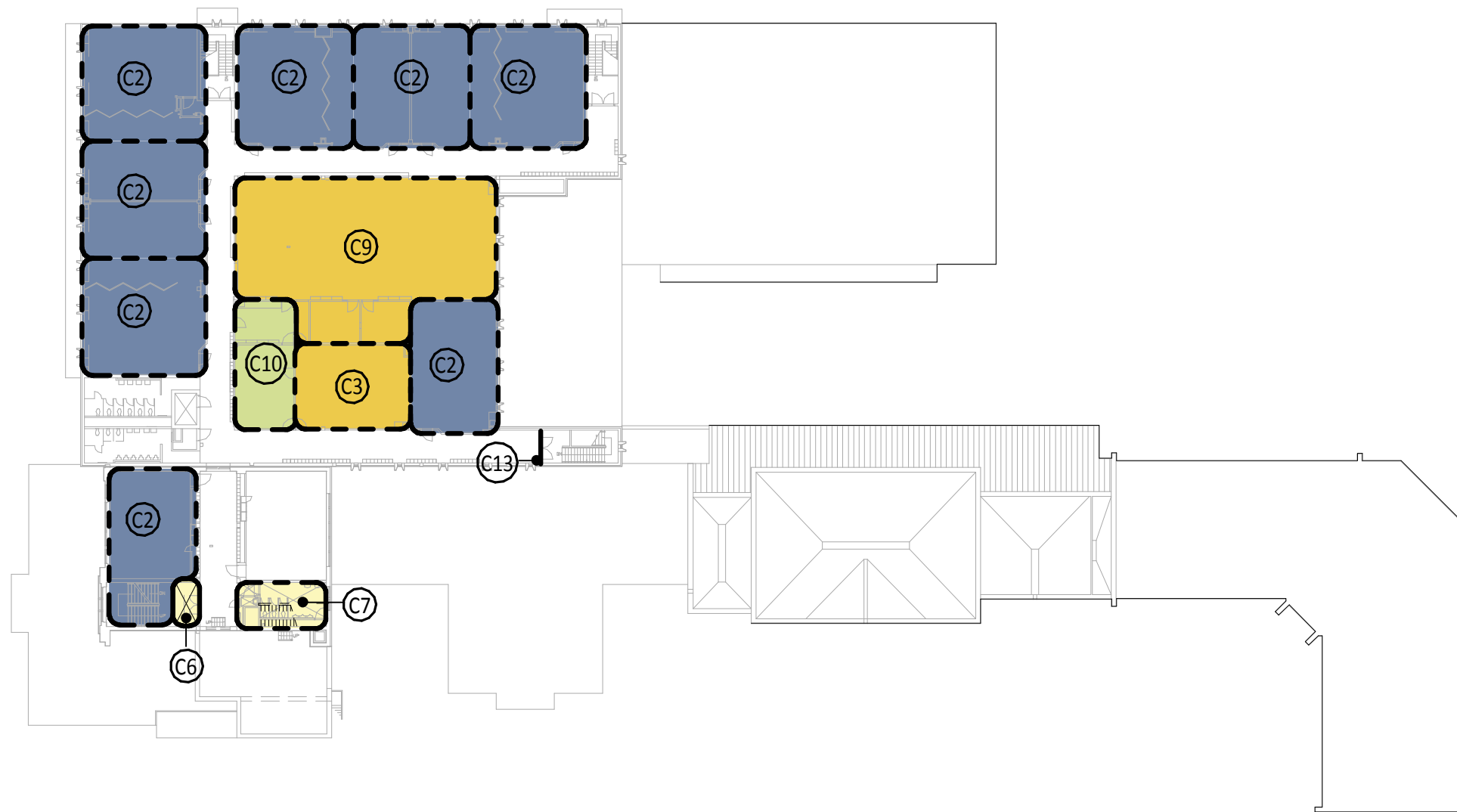
  

	Demolition / Removal
	New / Existing
	Property Line
	Main Entry
	Secondary Entry
	Service Entry














# Cherokee Heights Elementary School

## Conceptual Utilization Plan

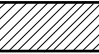

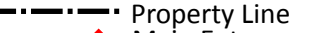





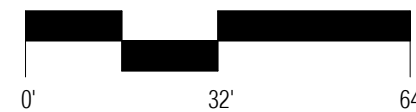
**Legend:**

- C1. Provide Early Learning Classrooms.
- C2. Provide General Education Classrooms.
- C3. Provide Computer and Science / Art / Flex Labs.
- C4. Reconfigure Locker Rooms and provide link between Baker Center and Pool.
- C5. Relocate Cafeteria, Kitchen, and Servery. Raise Gym Floor to Match Adjacent Rooms
- C6. Provide Elevator with full building access.
- C7. Provide Stairs as indicated.
- C8. Relocate / Rebuild / Reconfigure Admin as indicated.
- C9. Remodel Library / Media Center and provide zoning and sound isolation.
- C10. Provide Maker Space.
- C11. Renovate Existing Receiving Area
- C12. Refinish Existing Gym/Cafeteria
- C13. New Lockdown Line w/Access Control

	<b>General Learning</b>
	<b>Science</b>
	<b>Performing Arts</b>
	<b>Career &amp; Tech Education</b>
	<b>Media Center</b>
	<b>Dining</b>
	<b>Athletics</b>
	<b>Circulation</b>
	<b>Facilities Support</b>
	<b>Administration</b>
	<b>Art</b>

	Demolition / Removal
	New / Existing
	Property Line
	Main Entry
	Secondary Entry
	Service Entry

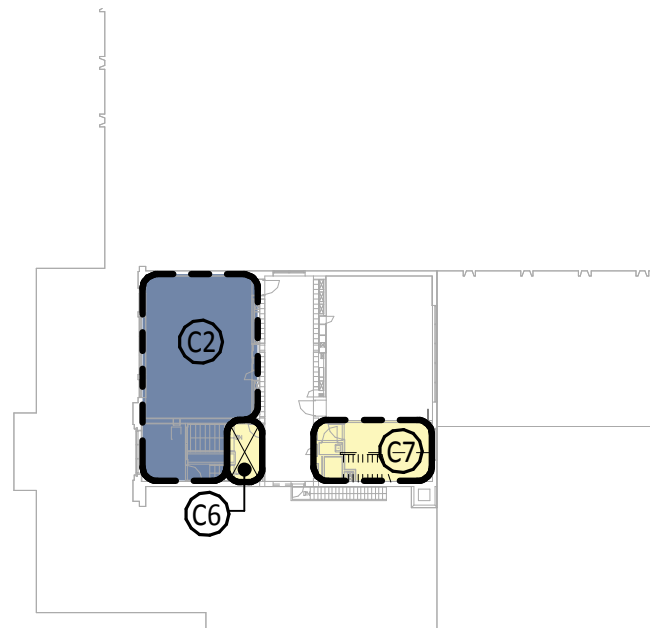









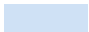









# Cherokee Heights Elementary School

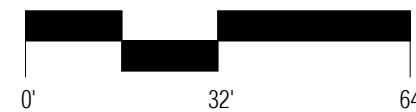
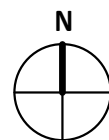
## Conceptual Utilization Plan

**Legend:**

- C1. Provide Early Learning Classrooms.
- C2. Provide General Education Classrooms.
- C3. Provide Computer and Science / Art / Flex Labs.
- C4. Reconfigure Locker Rooms and provide link between Baker Center and Pool.
- C5. Relocate Cafeteria, Kitchen, and Servery. Raise Gym Floor to Match Adjacent Rooms
- C6. Provide Elevator with full building access.
- C7. Provide Stairs as indicated.
- C8. Relocate / Rebuild / Reconfigure Admin as indicated.
- C9. Remodel Library / Media Center and provide zoning and sound isolation.
- C10. Provide Maker Space.
- C11. Renovate Existing Receiving Area
- C12. Refinish Existing Gym/Cafeteria
- C13. New Lockdown Line w/Access Control



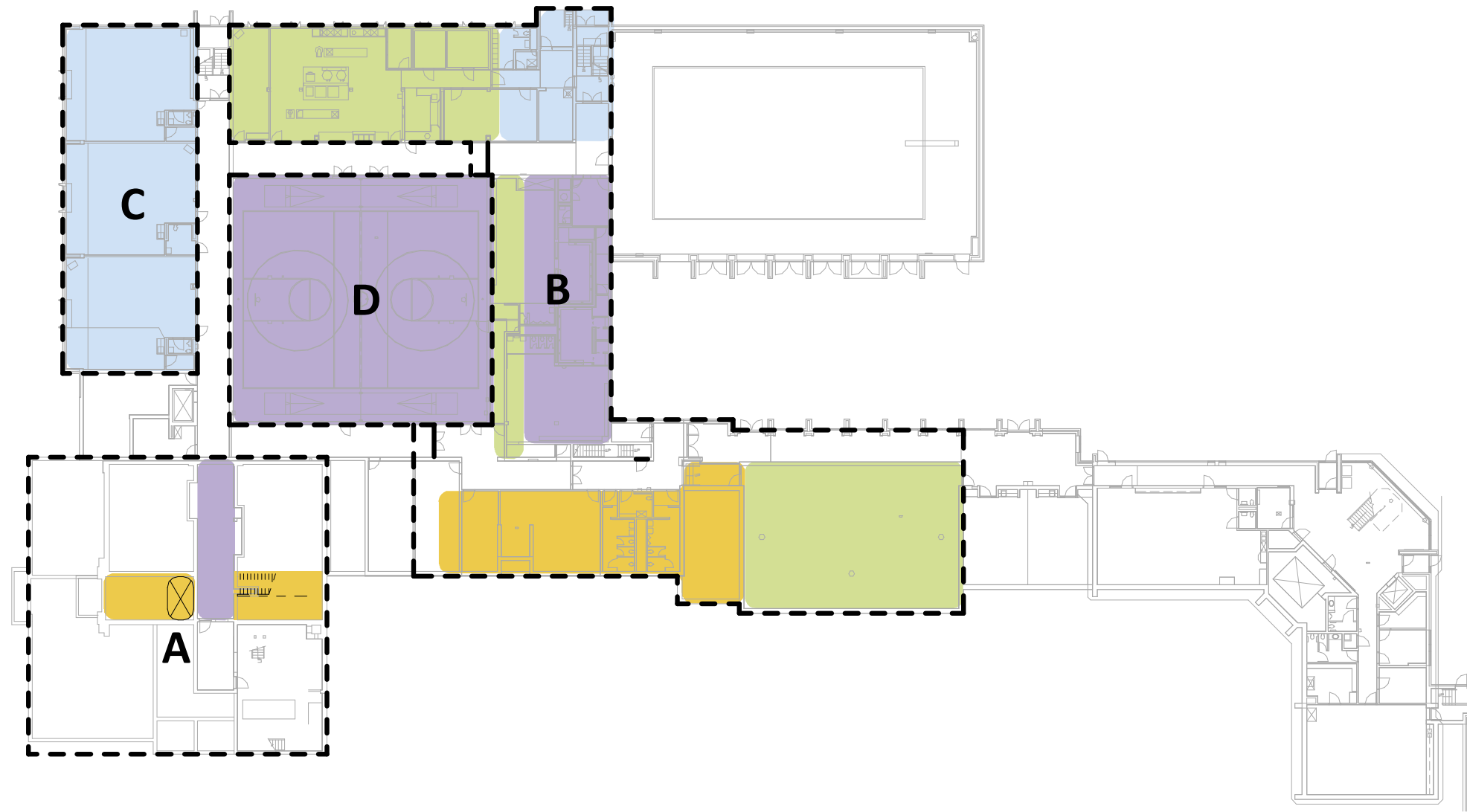
	Demolition / Removal		General Learning
	New / Existing		Science
	Property Line		Performing Arts
	Main Entry		Career & Tech Education
	Secondary Entry		Media Center
	Service Entry		Dining
			Athletics
			Circulation
			Facilities Support
			Administration
			Art



Forth Level

# Cherokee Heights Elementary School

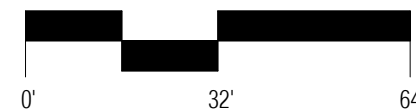
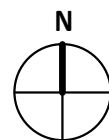
## Conceptual Construction Plan

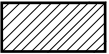









Scope Package	New Construction	Heavy Remodel	Medium Remodel	Light Remodel	Finishes Only
A	0 SF	658 SF	0 SF	0 SF	465 SF
B	0 SF	2257 SF	5572 SF	1113 SF	1850 SF
C	0 SF	0 SF	0 SF	3555 SF	0 SF
D	0 SF	0 SF	0 SF	0 SF	5087 SF
<b>TOTAL</b>	0 SF	2915 SF	5572 SF	4668 SF	7402 SF

Line Items	Unit	Lump Sum

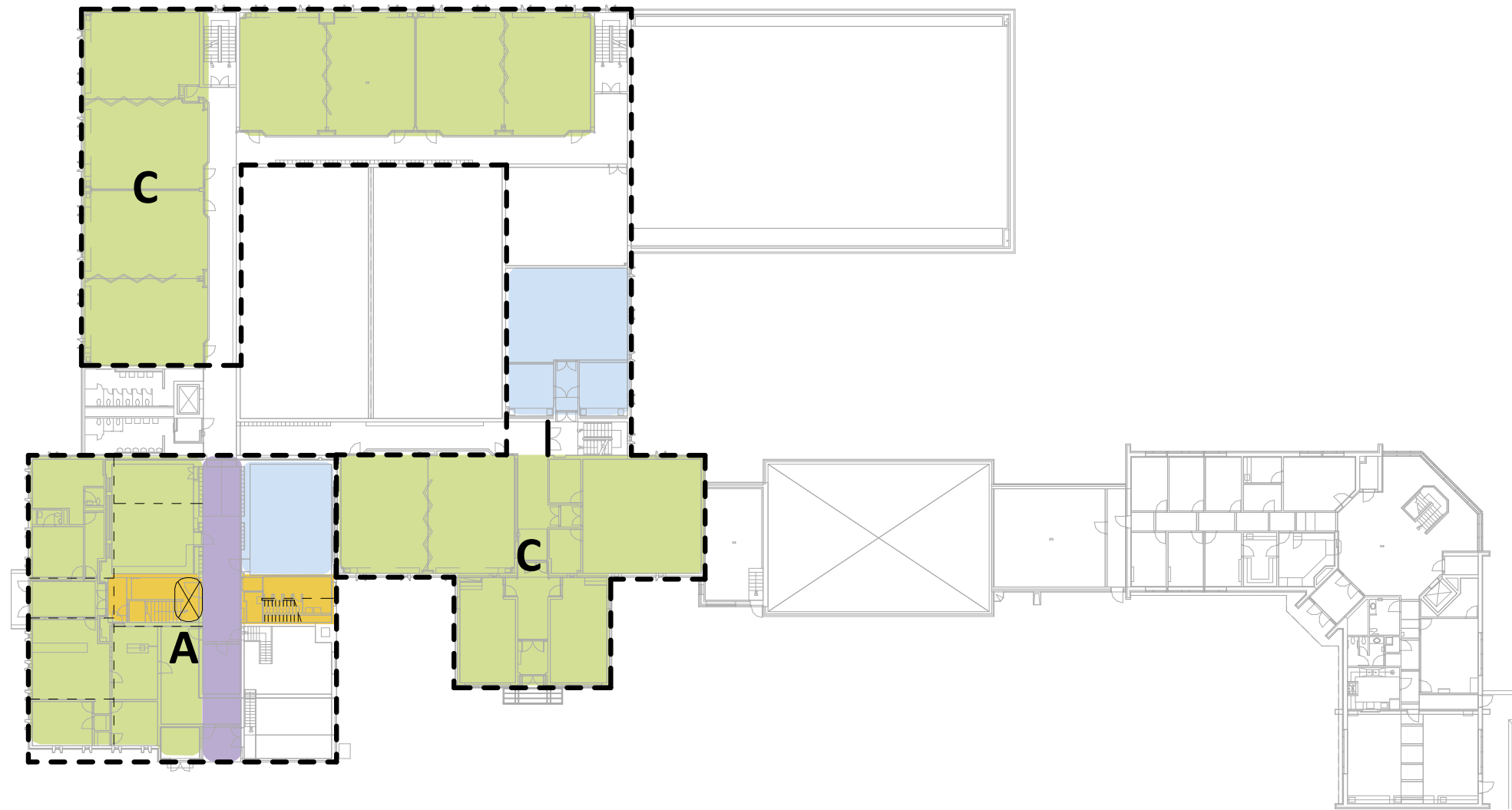
Main Level



-  Demolition / Removal
-  New / Existing
-  New Construction
-  Heavy Remodel
-  Medium Remodel
-  Light Remodel
-  Finishes Only
-  No Work









# Cherokee Heights Elementary School

## Conceptual Construction Plan



Scope Package	New Construction	Heavy Remodel	Medium Remodel	Light Remodel	Finishes Only
A	0 SF	658 SF	3678 SF	750 SF	877 SF
C	0 SF	0 SF	10,969 SF	1316 SF	0 SF
<b>TOTAL</b>	0 SF	658 SF	14,647 SF	2066 SF	877 SF

Line Items	Unit	Lump Sum

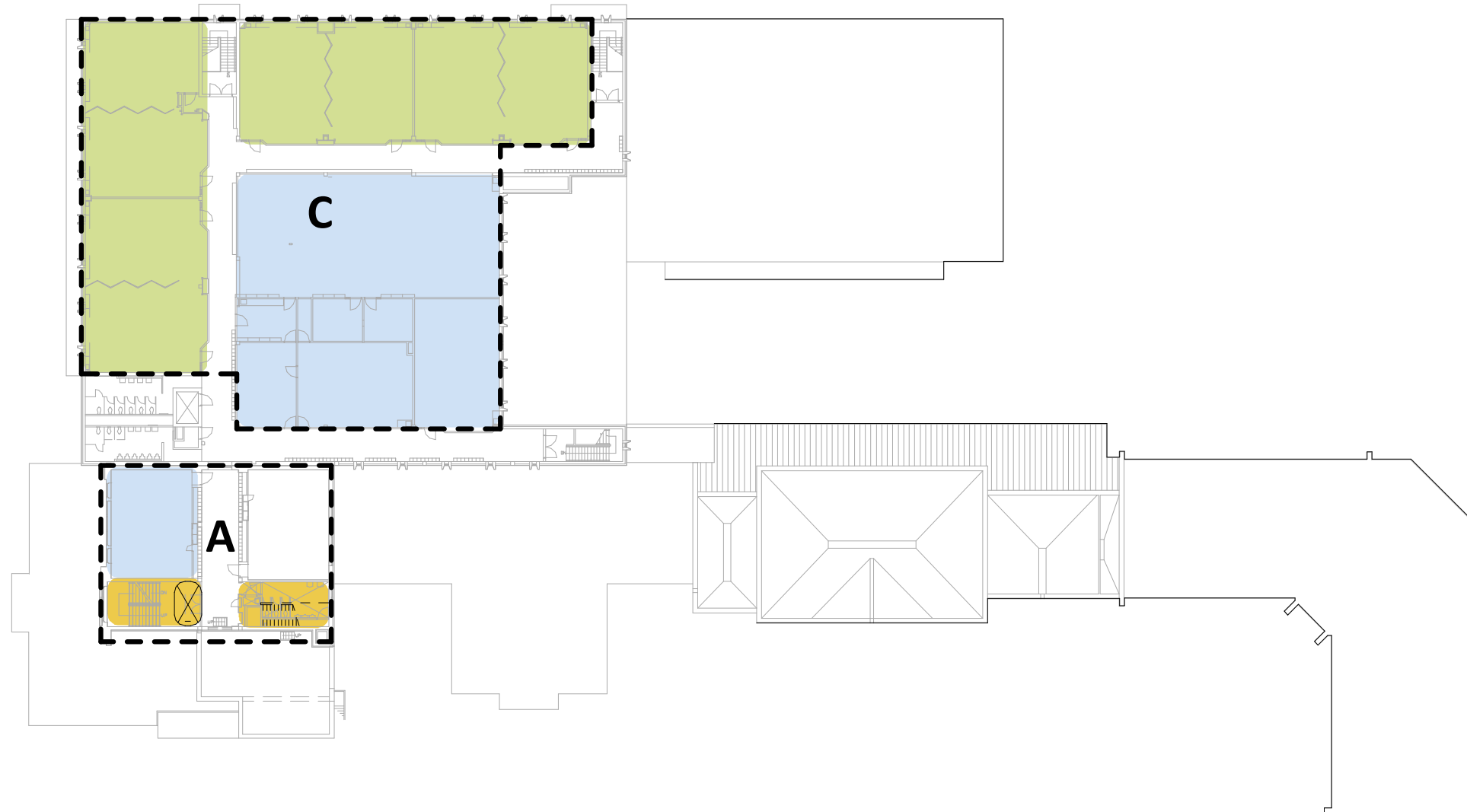
-  Demolition / Removal
-  New / Existing
-  New Construction
-  Heavy Remodel
-  Medium Remodel
-  Light Remodel
-  Finishes Only
-  No Work





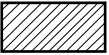







# Cherokee Heights Elementary School

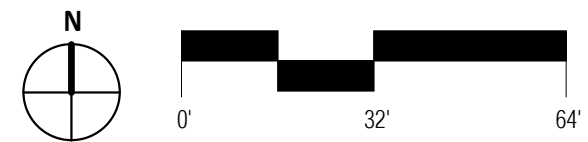
## Conceptual Construction Plan



Scope Package	New Construction	Heavy Remodel	Medium Remodel	Light Remodel	Finishes Only
A	0 SF	659 SF	6488 SF	5707 SF	0 SF
C					
<b>TOTAL</b>	0 SF	659 SF	6488 SF	5707 SF	0 SF

Line Items	Unit	Lump Sum

-  Demolition / Removal
-  New / Existing
-  New Construction
-  Heavy Remodel
-  Medium Remodel
-  Light Remodel
-  Finishes Only
-  No Work

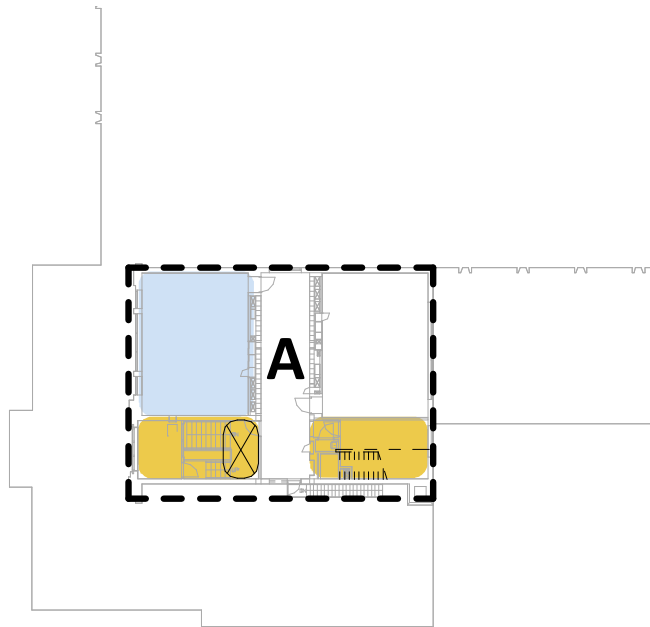


# Cherokee Heights Elementary School

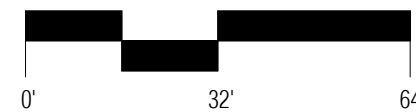
## Conceptual Construction Plan

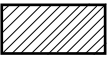







Scope Package	New Construction	Heavy Remodel	Medium Remodel	Light Remodel	Finishes Only
A	0 SF	659 SF	-- SF	719 SF	0 SF
<b>TOTAL</b>	0 SF	659 SF	-- SF	719 SF	0 SF

Line Items	Unit	Lump Sum



Forth Level



-  Demolition / Removal
-  New / Existing
-  New Construction
-  Heavy Remodel
-  Medium Remodel
-  Light Remodel
-  Finishes Only
-  No Work