



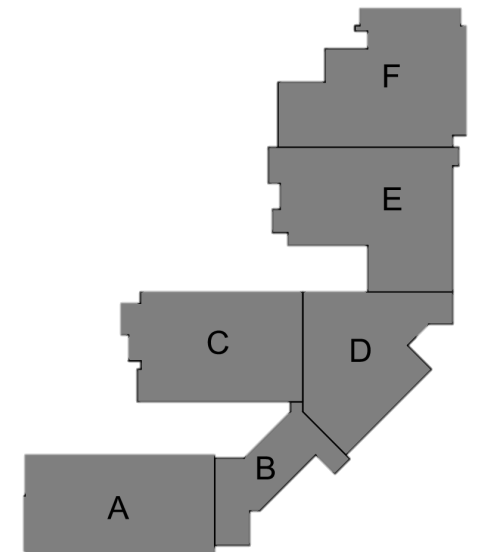
Mary E. Britton Middle School

➤ **Completed Work:**

- Area A platform ready for Hollow Core (Moved to 11-6 due to weather)
- Completed Concrete Topping Slab Prep Area D
- Continue ICF at Area E Cafeteria
- Started ICF at Storm Shelter above 15'
- Continue MEP and Sprinklers in Various Areas
- CMU at Stage Area and Cafeteria
- Roof Systems Mobilization and materials delivery

➤ **Upcoming Work/Look Ahead:**

- Decking at Gymnasium over roof structure
- Decking at Kitchen over roof structure
- Continue ICF at Area B
- Continue Stala Frames at Area D
- Continue CMU Masonry at Cafeteria
- Continue CMU Masonry at Stage
- Roofing at Locker Room



Mary E. Britton Middle School

Area A – CMU at Fire Wall



Week Ending November 3, 2023



Mary E. Britton Middle School

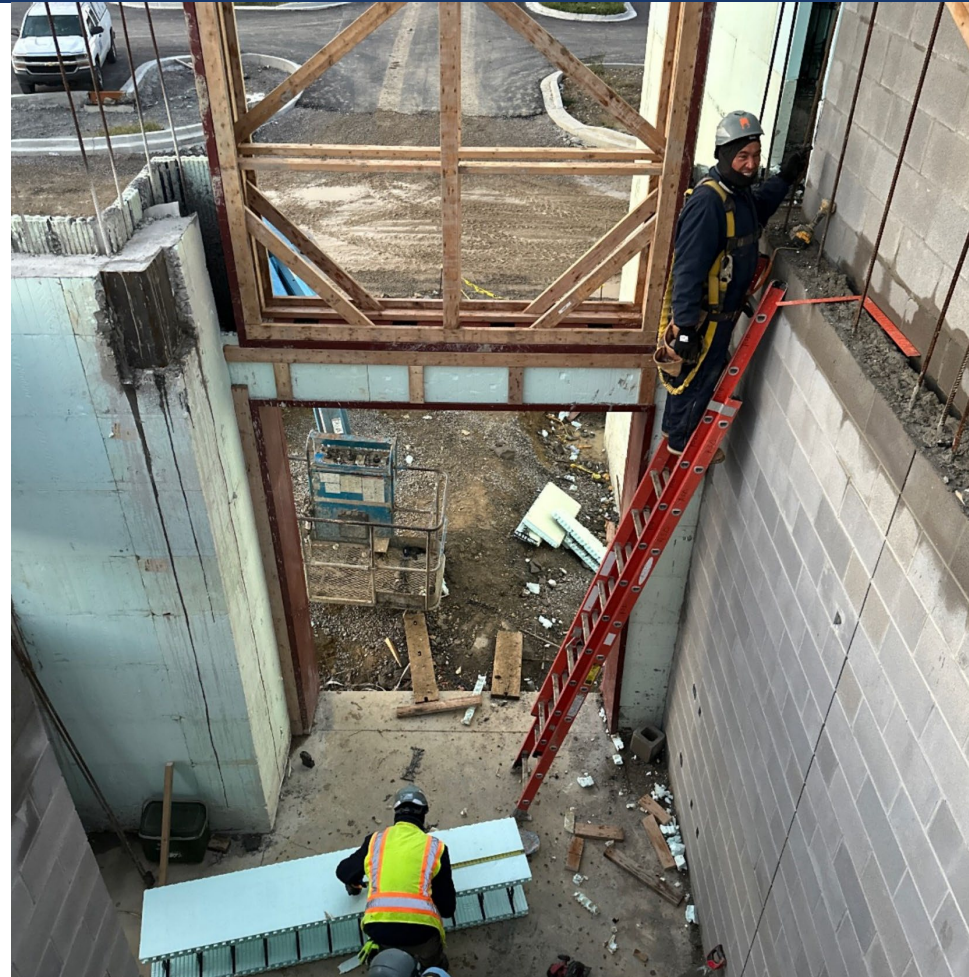
Area B – Mechanical Platform Hollow Core Set



Week Ending November 3, 2023

Mary E. Britton Middle School

Area B – Vestibule Frame Setting



Week Ending November 3, 2023

Mary E. Britton Middle School

Area C- ICF at End Wall



Week Ending November 3, 2023

Mary E. Britton Middle School

Area D – Hollow Core Set on 2nd Floor Media Center



Mary E. Britton Middle School



Area E – ICF Concrete Pour



Week Ending November 3, 2023

Mary E. Britton Middle School

Area E – Kitchen Structure and CMU Continues



Week Ending November 3, 2023

Mary E. Britton Middle School



Area F – Air Barrier Continuing Around the Gym



Week Ending November 3, 2023