



**FAMILY ACADEMY**

# Family Empowerment for 21st-Century Learners

THURS, NOVEMBER 2 | 6-7:30 PM



**FEDERAL WAY  
PUBLIC SCHOOLS**





# Scholar Led Conferences: Best Practices and Supports



## Federal Way Public Schools





# Purpose

I will learn...

1. What Scholar Led Conferences (SLCs) are.
2. How to explore resources in ParentVUE/StudentVUE.
3. How to request an interpreter for SLCs.
4. How to utilize Learning Partnership Guides.
5. How to make SLCs powerful and successful.



**FEDERAL WAY**  
PUBLIC SCHOOLS

# What are Scholar Led Conferences?

- A Scholar-Led Conference is different from a traditional parent/teacher conference.
- The purpose of a Scholar-Led Conference is for children to summarize their strengths and next steps for learning based on their individual work and achievement data.
- Scholars and families should leave the conference on the same page about individual strengths and areas of focus.



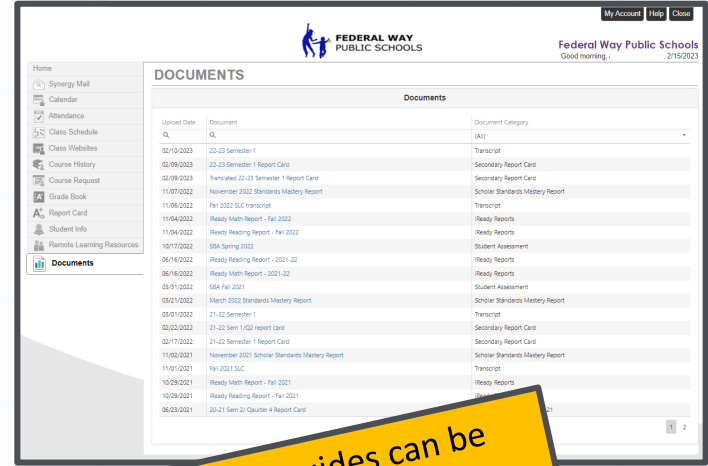
# Exploring Scholar Resources in ParentVUE/StudentVUE

Access ParentVUE/StudentVUE at [grades.fwps.org](https://grades.fwps.org)

## Resources found in ParentVUE/StudentVUE:

- Class Schedule
- Synergy Mail
- Current Grade Book
- Documents will be uploaded such as:
  - Standards Mastery Report
  - iReady Math/Reading Reports (K-8)
  - Report Cards and Translations
  - Smarter Balanced Results
  - Transcript

*\*SLC documents will be uploaded on 11/6*



Upload Date	Document	Document Category
02/20/2023	10-23 Semester 1	Transcript
02/09/2023	10-23 Semester 1 Report Card	Secondary Report Card
02/09/2023	Translanted 10-23 Semester 1 Report Card	Secondary Report Card
11/07/2022	November 2022 Standards Mastery Report	Scholar Standards Mastery Report
11/06/2022	Fall 2022 SLC Transcript	Transcript
11/04/2022	Ready Math Report - Fall 2022	Ready Reports
11/04/2022	Ready Reading Report - Fall 2022	Ready Reports
10/17/2022	8th Spring 2022	Student Assessment
06/16/2022	Ready Reading Report - 2021-22	Ready Reports
06/16/2022	Ready Math Report - 2021-22	Ready Reports
03/31/2022	6th Fall 2021	Student Assessment
03/21/2022	March 2022 Standards Mastery Report	Scholar Standards Mastery Report
03/01/2022	21-22 Semester 1	Transcript
02/02/2022	21-22 Sem 1/SG2 Report Card	Secondary Report Card
02/17/2022	21-22 Semester 1 Report Card	Secondary Report Card
11/02/2021	November 2021 Scholar Standards Mastery Report	Scholar Standards Mastery Report
11/01/2021	Fall 2021 SLC	Transcript
10/29/2021	Ready Math Report - Fall 2021	Ready Reports
10/28/2021	Ready Reading Report - Fall 2021	Ready Reports
06/23/2021	20-21 Sem 2/ Quarter 4 Report Card	Secondary Report Card

Support videos and guides can be found on FWPS' website at [bit.ly/PVUEsupports](https://bit.ly/PVUEsupports)



## Instructional Videos

What is ParentVUE? Using App Mail Updating Contact Info Adjusting Grade Notifications Access Documents View Schedules and Grades

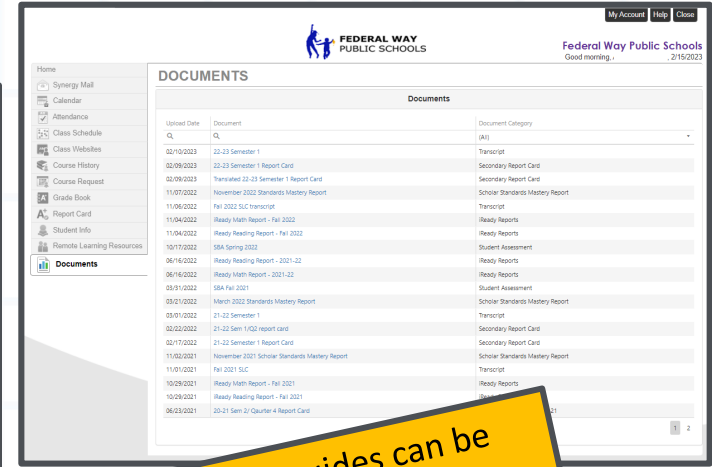


# Exploring Scholar Resources in ParentVUE/StudentVUE

Access ParentVUE/StudentVUE at [grades.fwps.org](https://grades.fwps.org)

Take a few minutes and explore the ParentVUE/StudentVUE supports. As you explore, think about:

- What resources in ParentVUE/StudentVUE will be most helpful with progress monitoring my scholar's education?
- How can the resources found in the "Documents" tab support SLCs?
- What resources in ParentVUE/StudentVUE should I setup routines to check regularly?

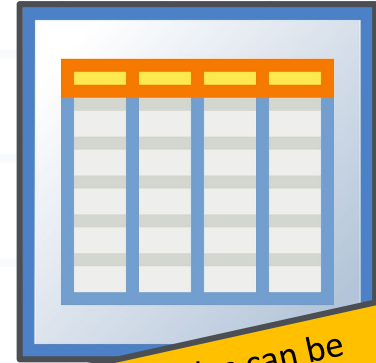


Support videos and guides can be found on FWPS' website at [bit.ly/PVUESupports](https://bit.ly/PVUESupports)



# Scheduling Scholar Led Conferences in ParentVUE

- *Scholar Led Conferences are Scheduled in ParentVUE*
- Support guides and videos are available on the FWPS website with translations.



Support videos and guides can be found on FWPS' website at [bit.ly/SLCfamilysupports](https://bit.ly/SLCfamilysupports)

A screenshot of a website page titled "SCHOLAR LED CONFERENCES". It features a QR code on the left, a paragraph of text in the middle, and a photo of a family meeting on the right. The text describes the purpose of these conferences and provides instructions for scheduling them in ParentVUE. A red arrow from the yellow callout box points to the URL on the page.

Families are critical partners in each scholar's learning.

ifferent from a traditional parent/teacher conference. The purpose children to summarize their strengths and next steps for learning achievement data. Scholars and families should leave the individual strengths and areas of focus.

giving HOW TO guide and video for the step-by-step instructions to n ParentVUE. Also, review the AI-A-Glance document prior to helpful questions to get the most of out of your child's conference.

onference in ParentVUE AI-A-Glance Information

arLed Conferences in ParentVUE

# Requesting an Interpreter for Scholar Led Conferences

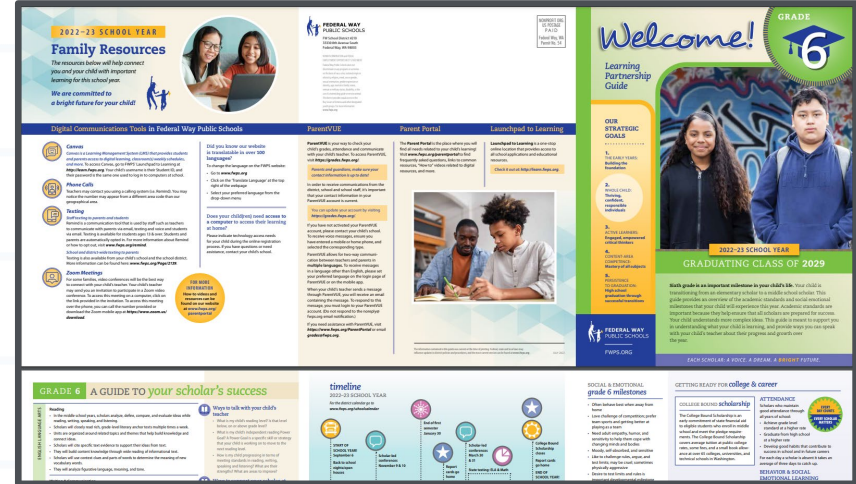
- *Please request an interpreter for SLCs with your scholar's school Office.*
- ILA devices will be available at each front office to support you checking in when you arrive. Most languages are supported with the ILA device.





# Utilizing FWPS' Learning Partnership Guides

- Learning Partnership Guides are tools to assist parents and schools in being on the same page.
- The guides were created with input from a committee of multiple stakeholders.
- These guides are distributed at the start of the school year at each of our schools throughout the school district.
- These guides are available for grades K-12 and in our top 8 languages.



Access Learning Partnership Guides at [fwps.org/learningpartnership](https://fwps.org/learningpartnership)



# Utilizing FWPS' Learning Partnership Guides

Take a few minutes and explore the Learning Partnership Guides. As you review the guides, think about:

- How does this help inform my scholar and I around grade-level specifics?
- How can I use this guide as a tool to discuss my scholar's learning this year?
- How can this guide help my scholar and I plan for important milestones this year?

Access Learning Partnership Guides at [fwps.org/learningpartnership](https://fwps.org/learningpartnership)

The image shows a screenshot of the FWPS Learning Partnership Guide for Grade 6. The top section is titled "2022-23 SCHOOL YEAR Family Resources" and includes a "Welcome!" message and "OUR STRATEGIC GOALS" such as "Engage, Empower, and Inspire" and "Support, Support, and Support". The middle section is titled "Digital Communications Tools in Federal Way Public Schools" and includes "FamilyVUE", "Parent Portal", and "Launchpad to Learning". The bottom section is titled "GRADE 6 A GUIDE TO your scholar's success" and includes a "Timeline 2022-23 SCHOOL YEAR" and "SOCIAL & EMOTIONAL grade 6 milestones".



# Making SLCs Powerful and Successful

- A scholar-led conference (SLC) is different from a traditional parent/teacher conference.
- The purpose of a SLC is for children to summarize their strengths and next steps for learning based-on their individual work and achievement data. Scholars and Families should leave the conference on the same page about individual strengths and areas of focus.
  - ***Make sure to discuss the following during the conference:*** scholar strengths, next steps for goals aligned to learning, upcoming events or opportunities to engage with school, what are the parent/guardian action items to support your scholar with reaching goals (pick at least 1 clear next step)
- You can schedule a separate meeting with the teacher if you have concerns.
- You can play a powerful role in your scholar's achievement if you continue the conversation about strengths and next steps at home throughout the school year.
- FWPS welcomes your questions and ideas about scholar-led conferences.





**FEDERAL WAY  
PUBLIC SCHOOLS**

Each Scholar: A voice. A dream. A **BRIGHT** future.



***What questions  
do you still have?  
Seakes@fwps.org***

# Feedback Survey

Please help us improve by sharing your feedback about today's event through a 3-minute survey:

Scan QR Code:



Or, Visit: [www.fwps.org/FamilyAcademySurvey](http://www.fwps.org/FamilyAcademySurvey)