



# SANTA BARBARA COUNTY WORKFORCE DEVELOPMENT BOARD

# AGENDA:

- I. Introductions
- II. Who We Are & What We Do
- III. LAW & WIOA 101
- IV. Workforce Structure
- V. SBCWDB Workforce Programs
- VI. Questions

# THE WORKFORCE DEVELOPMENT BOARD

Santa Barbara County Workforce Development Board is the local entity responsible for carrying out the requirements of the Federal Workforce Innovation and Opportunity Act. We oversee federally-funded workforce services for businesses and job seekers delivered through the America's Job Center of California (AJCC).

**The WDB is authorized to set workforce system policies, implement local and regional plans, approve WDB budget, and select providers and operators for WIOA Title I programs.**

# MEMBERSHIP CATEGORIES

- Local Business Representatives (Private Sector)
- Adult Ed and Community College
- State Employment Service office (EDD)
- Social Services Department
- Labor Union
- Department of Rehabilitation
- Community Based Organization
- Economic and Community Development entity



# WDB BOARD MEMBERS



**Sandra Dickerson,**  
**Chair**  
Your People  
Professionals



**Dianne Owens**  
Consultant



**Glenn Morris**  
Santa Maria Valley  
Chamber of Commerce



**Daniel Nielson**  
Department of Social  
Services



**Cesar Valladares**  
Employment  
Development  
Department (EDD)



**Carola Smith**  
Santa Barbara City  
College



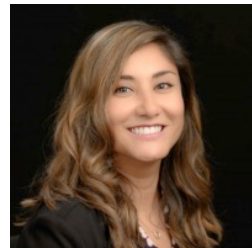
**Cara Williams**  
Cottage Health



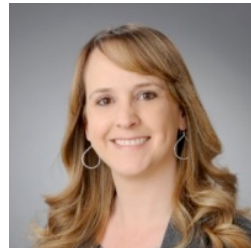
**Bill Baker**  
IBEW Local 413



**Justin McIntire**  
Department of  
Rehabilitation



**Petra Amaro**  
Santa Barbara  
Foundation



**Adrienne Dodd**  
Marian Regional  
Medical Center



**Bob Nelson**  
County Board of  
Supervisors



**Susan Salcido**  
Santa Barbara County  
Education Office



**Yesenia Decasaus**  
UDW/AFSCME 3930



**Thomas Lamica**  
Allan Hancock College



**Najah Young**  
Hilton Santa Barbara



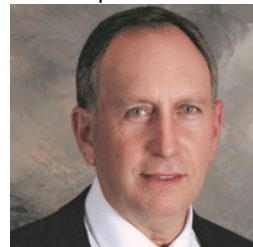
**Kathy Vreeland**  
Buellton Chamber of  
Commerce



**Jeremy Goldberg**  
Central Coast Labor  
Council, AFL-CIO



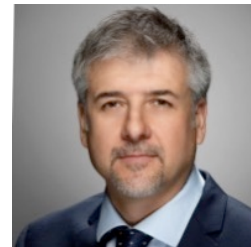
**Sebastian Fishman**  
Teledyne



**Steve Popkin**  
Lompoc Valley Medical  
Center



**Marta Quintero**  
Women's Economic  
Ventures



**Marco Scussat**  
Kyocera – SLD Laser



**Daniel Zaragoza**  
LiUNA Local 220

The Workforce Innovation and Opportunity Act (WIOA) was signed into law on July 22, 2014.

WIOA is designed to provide services to Adults and Youth who have significant barriers and assist them with entering into high quality, high wage jobs and careers.

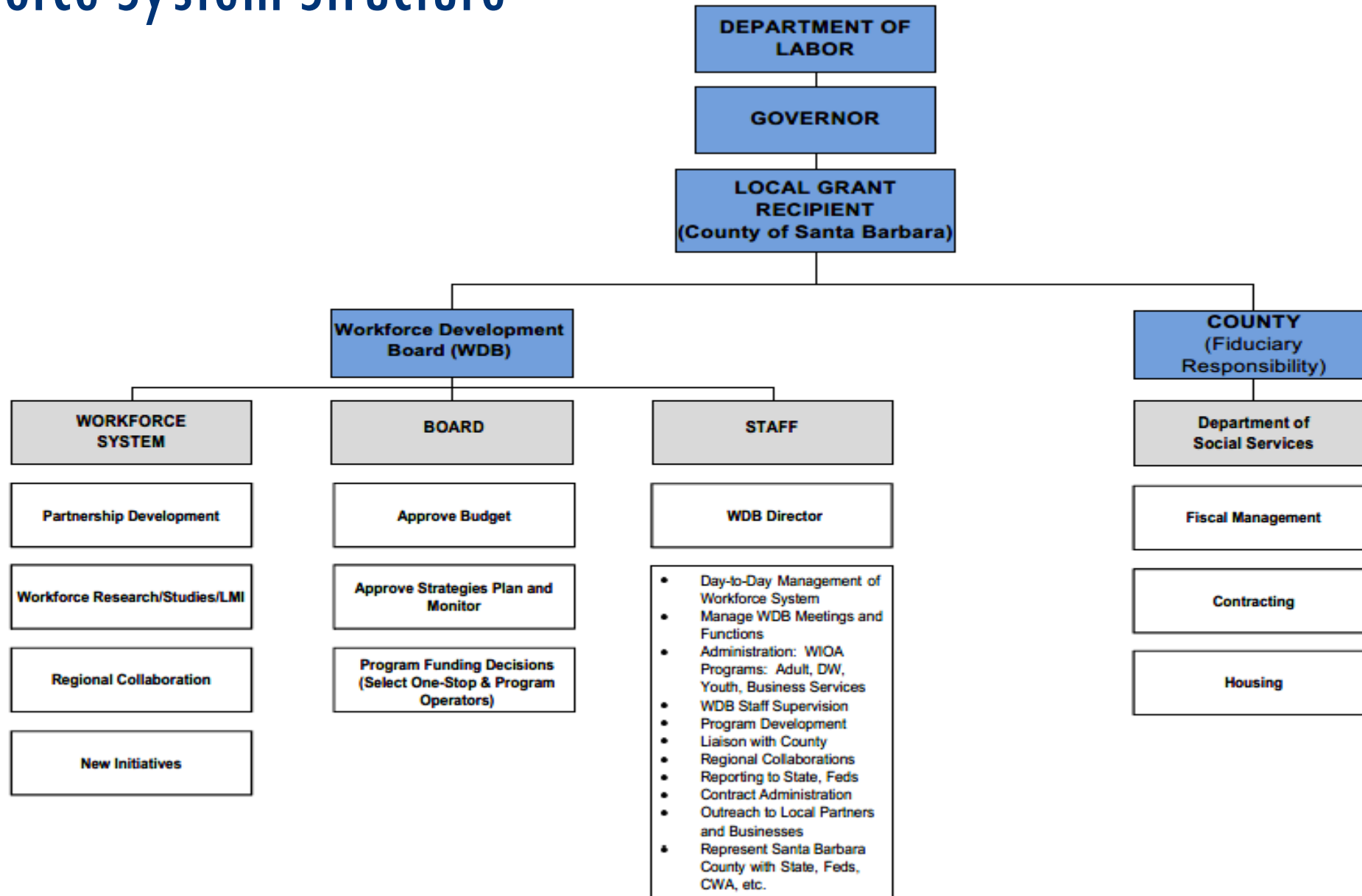
It promotes matching employers with the skilled workers.

# CALIFORNIA WORKFORCE DEVELOPMENT SYSTEM

The statewide workforce development board system is comprised of 45 Local Workforce Development Boards and as board member of the Santa Barbara Workforce Development Board, you will provide oversight and share responsibility for these millions of dollars that support our local workforce system.

These local boards work together with their local chief elected officials to oversee the delivery of workforce services relevant to community members and businesses.

# Workforce System Structure





# AJCC Network

Two AJCC locations in addition to the services provided through different service providers across the County.



130 E. Ortega Street  
Santa Barbara



1410 South Broadway  
Santa Maria



Goodwill  
Youth Centers

# Workforce Programs

- 1 Rapid Response & Layoff Aversion
- 2 WIOA Adult and Dislocated Worker Career Services
- 3 WIOA Youth Career Services
- 4 Workforce Special Projects



# BUSINESS SERVICES

WIOA emphasizes employers as a primary customer in the Workforce System and ensures workforce activities are driven to develop skilled workers in order to match them with local and regional businesses.

## Local and Regional Business Services include:

### Rapid Response Services

- for Layoffs & Business Closures

### Recruitment Services

- Hiring Events
- Outreach
- Innovative Strategy

### Business Engagement

- Collaboration
- Networking
- Job Developer Meetings
- Connecting Resources to businesses

### Industry Sector Research

- Revised every two years

### Partnerships with Chambers of Commerce

### Outreach Efforts

- Workforce Wednesday newsletters
- Website
- Social media

# WIOA PROGRAMS — Adult, Dislocated Worker, & Youth

Program/Project Name	Target Population	Program Description	Lead or Partner
<b>Adult/Dislocated Worker Program</b>	Adult Job Seekers. Laid-off and Dislocated Job Seekers	This program provides training and employment services to Adult and dislocated worker job seekers that need to update or upgrade skills to enter into a high road job. Services includes, ITA, OJT and supportive services	Lead
<b>Youth</b>	Youth ages 16-24	This programs provides job, training and 14 workforce elements for youth with barriers to employment. Youth receive wide variety of services that include job readiness, paid work experience, supportive services, job placement.	Lead

# WORKFORCE SPECIAL PROJECTS

Program/Project Name	Target Population	Program Description	Lead or Partner
<b>Summer Training and Employment Program for Students 2022 (STEPS)</b>	High School or College Students with Disabilities (ages 16-21)	This project provides students with disabilities, the opportunities for 40 hours of jobs readiness training and paid work experience.	Lead
<b>Pathway Home 2 (PH2)</b>	Incarcerated Adult Job Seekers	DOL grant to provide eligible, incarcerated individuals with workforce services prior to release and to continue services after release by transitioning the participants into reentry programs in the communities to which they will return. Provides job-ready training, paid work experience, supportive services, and vocational training in partnership with a multi-group/partner approach.	Lead in Partnership w/SBSO
<b>Comprehensive and Accessible Reemployment through Equitable Employment Recover National Dislocated Worker Grant (CAREER NDWG)</b>	English Language Learners and underserved dislocated workers affected by COVID-19	DOL CAREER DWG targets dislocated workers most affected by the economic and employment fallout from the COVID-19 pandemic, in particular those from historically-marginalized communities or groups, and those who have been unemployed for an extended period of time or who have exhausted UI or other Pandemic Unemployment Insurance programs. Program services include basic and individualized career services, paid work experience, supportive services, access points, marking and outreach, partnership development and upgrading our AJCCs.	Lead

# WORKFORCE SPECIAL PROJECTS (cont.)

Program/Project Name	Target Population	Program Description	Lead or Partner
<b>Farm Worker Resource Center</b>	Farmworkers, families of farmworkers, farmers and employers	The Santa Barbara County's Farmworker Resource Center aims to address barriers and increase access to services and referrals for farmworkers, farmworkers' families, employers and farmers through the staff of the Department of Social Services that understand the culture and speak the languages of our community. The Farmworker Resource Center will be a mobile one-stop shop providing countywide outreach. Services include mental health referrals (200) job readiness (450) child care assistance (200) Mexican Consulate Pop-up sites (150)	Lead
<b>Breaking Barriers (BB AB-268)</b>	Justice Involved Youth; at risk of becoming justice involved; Youth with disabilities 16 - 24yrs	This project will has two major components: Serving justice involved youth and those at risk of becoming justice involved with an emphasis on supporting the needs due to the closure of Los Prietos Boys Camp and a Summer Jobs Program for youth supported by subsidized employment opportunities from this project, as well as engaging employers who will sponsor paid work experience opportunities. Services include, job readiness, summer jobs, supportive services, training and employer engagement.	Lead
<b>Workforce Transformation Corps Fellowship</b>	N/A	SBCWDB was selected as one of five local workforce development boards in California an opportunity to identify promising approaches for adopting human-centered design principles within their organizations. Job for the Future- Workforce transformation fellows will collaborate with workforce board staff members to identify current needs, and place-based considerations that inform a focused and strategic approach to more customer-centered people, programs, products, policies, and partnerships.	Workforce Transformation Corps Fellowship



# WORKFORCE SPECIAL PROJECTS (cont.)

Program/Project Name	Target Population	Program Description	Lead or Partner
<p><b>Quality Jobs, Equity, Strategy, and Training Disaster Recovery National Dislocated Worker Grant (QUEST)</b></p>	<p>Historically marginalized groups of minorities, justice involved individuals, young adults and people without high school diplomas</p>	<p>This initiative will support employment equity as the nation prioritizes economic and employment recovery from the COVID-19 pandemic. QUEST will focus on serving individuals whose employment has been negatively impacted by the pandemic, including individuals from historically marginalized groups of minorities, justice involved individuals, young adults and people without high school diplomas. This project will have an emphasis in serving communities and unincorporated areas that generally do not have access to the AJCCs. Services include, basic and individualized career services, paid work experience, partnership development, community outreach and industry sector committees.</p>	<p>Lead</p>
<p><b>Regional Equity and Recovery Partnerships (RERP)</b></p>	<p>Immigrants, ELL, People with Disabilities, Justice Involved Youth, Veterans, Youth 18-24, 1st Generation college students, low-income and dislocated workers</p>	<p>In coordination with Community Colleges, participants will receive classroom training opportunities that will lead to in demand occupations within emphasis Career Pathways. They will receive comprehensive case management services and wrap around services including supportive services.</p>	<p>Lead in Partnership with SLO WDB</p>

# WORKFORCE SPECIAL PROJECTS (cont.)

Program/Project Name	Target Population	Program Description	Lead or Partner
<b>South Central Coast: Regional Planning Initiative 5.0 (RPI 5.0)</b>	Regional Organizing; Professional Development	RPI 5.0 funding will cover the cost for a Regional Organizer that will assist in building momentum and strengthening regional leadership by enhancing partnerships with industry, education and workforce development leaders and Professional Development for WDB staff and partners as it relates to Industry Driven Training solutions, Equity and Job Quality, Services to Target Populations and Partnerships and Shared Resources.	Lead
<b>High Roads Construction Careers: Resilient Workforce Fund (RWF)</b>	Women, English Language Learners, Housing insecure, Veterans, Immigrants/Refugees, Underserved Communities and Youth	The HRCC: RWF Program intends to support and expand the work of past and present HRCC programs. Goals include: development of a skilled construction workforce; increasing access to state-approved apprenticeships in the building and construction trade. This is a tri-county partnership that includes Ventura County WDB (Lead), Santa Barbara County WDB, and San Luis Obispo County WDB.	Partner
<b>Prison 2 Employment 2.0 (P2E 2.0)</b>	Justice involved- Santa Barbara County probation	This project will provide intensive case management, job readiness service, paid work experience, supportive services, and transitional job opportunities, to the recently incarcerated job seekers who are part of the Santa Barbara County Probation Department's subsidized housing.	Lead in Partnership with SLO WDB

# 2023 Board Priorities



QUESTIONS??