



# *Annual Report* 2022-23

Sheldon ISD

Every Child, Every Day



## **SUPERINTENDENT OF SCHOOLS DR. KING DAVIS**

Since joining the Sheldon community in 2016, I have been extremely proud of the ways we continue to unite when presented with adversity and opportunities. From a pandemic to overcoming Hurricane Harvey, this community believes kids come first. Every decision is made with an understanding of how it will benefit students.

I look forward to greeting approximately 10,700 students for the 2022-23 school year. It is our mission to provide personalized learning opportunities to ensure all students graduate college and career ready. Every child learns differently, and we are passionate about creating a learning environment that is safe, individualized and engaging. We have learned through the past two school years that change can happen in an instant, but what does not change is the love we have for our students and families. We are better together, and we are focused on what is best for every child, every day. We are Sheldon Strong.

-King Davis, Ed. D.



# Table of Contents

## **1** Sheldon ISD at a Glance & Board of Trustees

## **2-3** Personalized Learning for Every Child Every Day

## **4-5** Personalized Experiences & Departmental Highlights

## **6-7** District Growth & Finances

## **8-9** Community Connections & Our Sheldon Staff



## *Mission Statement*

**Sheldon ISD** will provide personalized learning opportunities to ensure all students graduate college and career ready.

**Every Child, Every Day**





Pictured (back, from left) are Fred Rivas, board member; Devora Myles, board member; Dr. King Davis, Sheldon ISD Superintendent; Erika Martinez, board secretary and Ken Coleman, board member; (front) Angela Cormier, board vice president; Eileen Palmer, board president; and Latricia Archie, board member.

## Points of Pride

### Highlights From Across Sheldon ISD



The Class of 2022 at King High School had many accomplishments including a total of **\$2.8 million in scholarships** (\$1.2 million in academic and \$1.6 million in athletics).



8 King High School seniors passed the Unmanned Pilot's License test. This test is an official TEA Recognized CTE Certification for **Drones Pilots**. With this license, students become official FAA pilots and have the ability to fly drones commercially.



Students in grades 9-12 earned **330 industry-based certifications**.



**144 seniors** register for the San Jac Promise and will receive money to cover tuition and books in college.

## Campuses

# 13

- 1 High School
- 1 9th Grade Campus
- 1 Alternative School of Choice
- 2 Middle Schools
- 6 Elementary Schools
- 2 Early Childhood Centers

## Students

# 10.7K

1,400+ educators and staff members

## Career Academies

# 6

Pathways for students to focus on careers from early college high school to culinary arts and business to criminal justice and STEM

## Growth Rate

# 3%

At 53.3 square miles, SISD attracts 300-400 new students annually and serves more than 87% low-income families

# Personalized Learning Every Step of the Way

## Early Childhood Academies

Preparing for the future begins at Sheldon's early childhood academies. 90% of a child's brain development happens before the age of 5. The district has two pre-kindergarten and kindergarten campuses. The district takes advantage of a program called Fueling Brains Ready Set Grow that prepares students to learn by developing problem solving and memory skills.



## Compass Schools

Compass Schools provide parents an opportunity to make a choice in a program that fits their child's interests. This program offers three tracks: Performing and Visual Arts at Garrett and Sheldon Lake Elementaries, Science, Technology, Engineering, and Math (STEM) at Sheldon and Carroll Elementaries, and Technology at Royalwood and Monahan Elementaries and is for all students enrolled in Sheldon elementary schools.



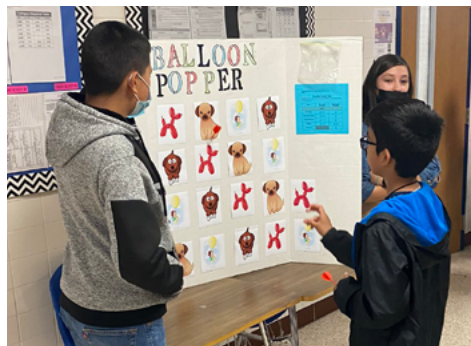
**Dual Language** is a program of choice offered beginning in kindergarten at the early childhood academies and at one of the Compass Schools: Royalwood, Sheldon, and Sheldon Lake elementary schools. The dual language classrooms combine native Spanish speakers with native English speakers to provide 50% instruction in each language. The goal of the program is for students to become bilingual, bi-literate and bi-cultural. Students can continue in middle school by enrolling in the Spanish Languages Other than English (LOTE) classes for high school credit.





# T-STEM Academy


Sheldon offers a Science, Technology, Engineering and Math Academy beginning with sixth grade. Our STEM students participate in project-based learning in all of their core classes as they follow the engineering design process and work in groups to find solutions to real-world problems while building tech skills and soft skills for the future workforce. Our high school STEM students follow programs of study and will graduate with a STEM Endorsement in either Computer Science, Engineering or Biomedical Science, 15+ college classes completed and industry based certifications such as an FAA Drone Pilot License.



## Dual Credit

Sheldon ISD offers many opportunities for students to participate in advanced level coursework while earning college credit including: Modified Early College Academy (MECA), Sheldon Early College High School (ECHS), Sheldon ISD T-STEM Academy, King Nurses in Training (KNIT), and Technical Dual Credit in 12 areas of certification.

The school district is proud to offer a TEA-designated Early College High School (ECHS) serving students in 9-12 grades. This school within a school is located on the King High School campus and is a partnership with San Jacinto College. The ECHS offers students a choice of nine degree plans. Students have the opportunity to earn an endorsement, a distinguished level of achievement diploma, a performance acknowledgment, and up to 60 college credit hours within four years of high school.

 **ECHS**  
39%  
SENIORS  
GRADUATED WITH  
ASSOCIATE DEGREES  
*National Average is 30%*

*Class of 2022*  
 **126**  
GRADUATES

**7** *Dell*  
*Scholars*  
of 500  
Nationwide

84 ECHS 72 KING HS  
**156** GRADS  
WITH 15+  
COLLEGE  
CREDIT HOURS



# Personalized Experiences

## Advancement Via Individual Determination

is a program offered on all Sheldon ISD campuses. AVID helps to develop reading, writing, and critical thinking skills as well as deepen content knowledge. It equips students with the skills of time management and organization to ensure their success in all classes. With AVID, students graduate and attend college at higher rates, but more importantly, they can think critically, collaborate, and set high expectations to confidently conquer the challenges that await them.



The district provides **Newcomer** students specialized classes during their first year enrolled in United States schools and includes sheltered classes for core content with teachers trained in content-based language acquisition. These classes provide students new to the country accelerated English acquisition through specialized instruction by a certified English as a second language teacher. These academies are provided at King Middle School and King High School.

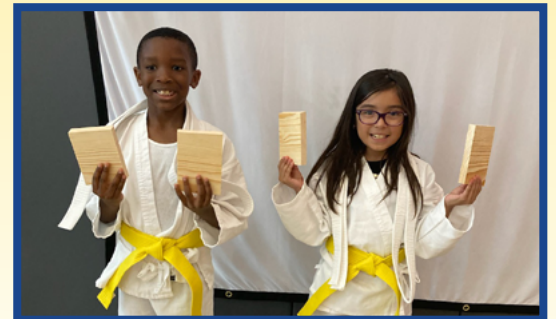
Every child deserves an education, and the **Special**

**Education Services** department is dedicated to providing student-centered programming options accessible to all children regardless of race, gender, economic status, physical, emotional or cognitive abilities. Students are empowered by preparing for future education, employment and independent living opportunities through the development of academic and social-emotional skills. Special Education is a supplementary program that addresses the provision of a free and appropriate education to students with special needs, including students with a variety of disabilities requiring additional services or assistance in order to make educational progress.

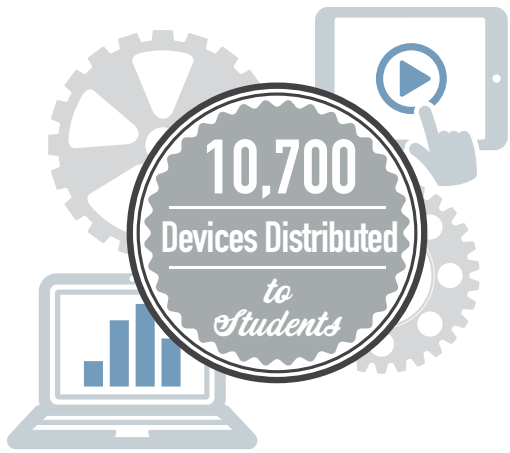


## Sheldon ISD offers **After School Programs** for students in pre-k-12.

The program provides activities that support academics while also offering enrichment to motivate and inspire students to be successful. Homework help and tutorials are available to assist students with meeting the challenging state academic standards. Additional activities such as cooking, soccer, karate, dance, arts and crafts, theater arts, etc. are designed to reinforce and complement the regular academic program in the area of reading, math, science, and social studies. This is a service provided free of charge to Sheldon ISD families thanks to the Nita M. Lowey 21st Century Community Learning Center grant.







## WiFi on the Roadways

Approximately two-thirds of Sheldon ISD's student enrollment take advantage of riding the bus to and from school each day. Providing equitable access to students at no cost to the school district or families has been the main goal of this pilot project. Sheldon ISD began with implementing WIFI on 15 of its buses and will eventually add to the entire fleet, thanks to federal funding from the Emergency Connectivity Fund.

## Excellence in the Arts

Twenty-one members of the C. E. King High School choir program competed in the Texas Music Educators Association Region 33 district honor choir auditions. Nine students advanced to the next round of auditions and participated in the region honor choir. Four King High School students were selected to continue to the Pre-Area All-State choir audition for the third round.

The King High School Panther band attended the Gulf Coast Marching Championships at McNeese State University. The Panther marching band placed second in their division and third overall of 19 bands that competed.



C.E. King High School Theatre Arts department advanced in the state One-Act Play competition for the first time in 10 years and the first time ever in 6A for the play "Candid."

Our pantherettes attended the MDDT Texas State Competition. The drill team got best in class runner up at the team Texas contest. They placed 1st place in Team Novelty and Officer Hip Hop, Most Entertaining dance of the day out of 399 dances for Team Novelty, along with many other awards.



**42%** of senior athletes signed for scholarships, totaling **\$1.555 million** dollars for college.

### Football



4th Consecutive trip to playoffs  
First time to 3rd round playoffs in 30 years  
5,635 yards and 492 points in a single year  
17 athletes sign for NCAA Scholarships

### Baseball & Softball



Girls- 1 athlete sign for NCAA Scholarships  
Boys- Overall Record 13-14

### Soccer



Girls- 5th in District  
Boys- 2nd in District

### Golf



3 Top Ten Finishes

### Basketball



Girls- Overall Record 11-21  
Boys- Area Qualifiers, 2 athletes sign for NCAA Scholarships

### Volleyball

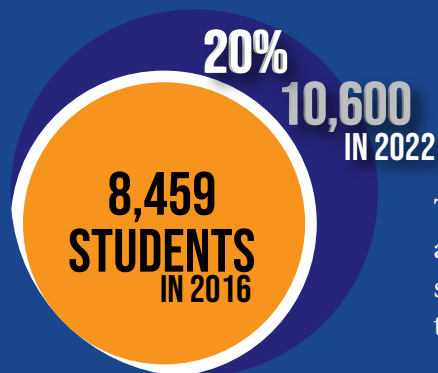


1 athlete sign for NCAA Scholarships

### Track

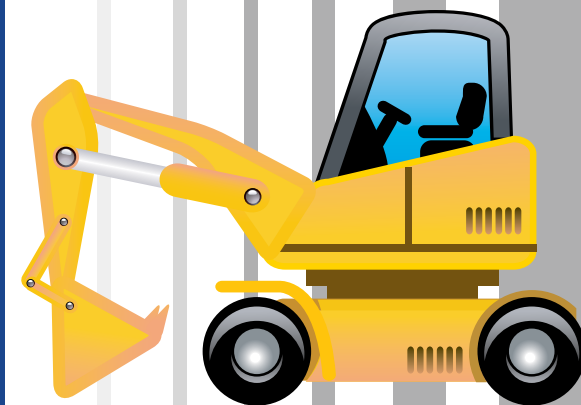


Girls- 1 athlete sign for NCAA Scholarships  
Boys- Meet record of 3:22 set by 4x4 relay,  
School record 1:25 set by 4x2 relay,  
Regional Qualifiers in 4x2 relay



## Enrollment soars in Sheldon ISD

The school district continues to experience growth in student enrollment annually increasing from 10,200 in the 2020-21 school year to 10,600 students for the 2021-22 school year. Since the last bond election in 2016, the district has grown by more than 2,100 students (8,459 to 10,600).



***Sheldon ISD is expected to build out completely at approximately 20,137 students.***

***In the next 10 years,  
Sheldon could serve  
just under 13,000  
students which is  
an additional 2,400  
students or 18%  
enrollment increase.***



## New Campus to Open

The district premieres the **C.E. King 9th Grade Campus** opening August 2022 to relieve enrollment growth at King High School. The facility is located at the previous King Middle School building. King High School will serve 10-12th graders.



**Thank you!**

Thanks to the support from our community in the 2016 Bond Election, three major projects have been completed to include a new building for C.E. King High School, Sheldon Lakes Elementary School, and Panther Stadium.



# Sheldon Tax Rate

# \$1.455

68% GENERAL OPERATIONS FUND  
32% DEBT SERVICE FUND

## Sheldon ISD “A – Superior Achievement”

Sheldon ISD has received an “A – Superior Achievement” rating from the Texas Education Agency on the state’s school financial accountability rating system, known as the School Financial Integrity Rating System of Texas or School FIRST. The rating system examines the quality of a school district’s financial management practices and the “Superior Achievement” is the state’s highest rating that a district can receive, demonstrating SISKD’s fiscal stewardship, transparent practices and strong financial reporting systems.

This is the 10th consecutive year Sheldon has received this recognition for financial management practices.



## Total Grants Awarded

**\$32 million** in federal and state grant funds received in 2021-22 school year

Sheldon ISD is the proud recipient of the 2021-2022 CTE Perkins Reserve Grant in the amount of \$925,000. Funding will be used to support the health science, culinary arts, and automotive technology programs.

## Maintaining Financial Excellence

Sheldon ISD believes in financial transparency to ensure dollars are invested in what is best for children.

## Funding Goes To:

62%



**Instructional Related**

20%



**Maintenance & Transportation**

13%



**Administration**

3%



**Other**

2%



**Athletics**

100%

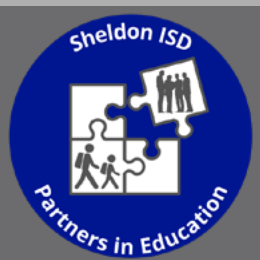
## SHELDON ISD BLUE CARD MEMBER

### Blue Card

The Blue Card program is for senior citizens in the Sheldon ISD community and is an initiative to honor all of our supporters in the district who are age 65 or older. Participants receive free entry to athletic and fine arts events as well as a free luncheon each year.

## Sheldon Ambassador Academy

The district launched the Sheldon Ambassador Academy and graduated 15 members in its first year. The program's purpose is to develop a group of parent and community leaders that encourage interaction, partnership, learning and dialogue to promote and support the district's vision. It is the hope the program drives participants to be future members of district committees who make a difference in the school community. The group met monthly and receives a behind the scenes look at school district operations through presentations and dialogue on topics such as communications, volunteerism, academics, career and technical education, STEM, finance and funding, safety and security and more.



### Partners in Education

The mission of the Sheldon ISD Partners in Education program is to

build relationships that benefit both schools and community businesses while enhancing the educational experience for Sheldon ISD students. Partners in Sheldon ISD can adopt a school, mentor or volunteer. Go to [www.sheldonisd.com/pie/](http://www.sheldonisd.com/pie/) for details.

## Let's Connect

Sheldon ISD desires to create partnerships with parents and community members by offering timely and trusted communication as well as opportunities to collaborate with residents, business partners and more.



The Sheldon ISD Education Foundation raises funds to directly support educators in the school district through the innovative teaching grant process. To date, the Foundation has awarded more than \$120,000 in innovative teaching grants to Sheldon ISD educators.

## First "Back to School Fair" a Success

For the first time, Sheldon ISD's Partners in Education program partnered with East Harris County Empowerment Council, Harris County Precinct 3, Amerigroup and Lake Houston YMCA to provide backpacks to more than 1,200 students in Sheldon ISD. Backpacks were distributed at the inaugural Back to School Fair held at Panther Stadium. Families pre-registered and were able to collect a backpack with supplies as well as stop by to visit tables with information on transportation, enrollment verification, career and technical education opportunities, as well as local partners such as Harris County Public Health and Inspire Church.





## Early Learning Center

The Sheldon Early Learning Center is available to children and grandchildren of district employees, six weeks to five years of age. The goal is to provide an environment that is nurturing and safe where children are encouraged to grow as unique individuals. By offering a developmentally appropriate program, children can learn at their own pace and in ways which are best for them.



## Our People Matter



Sheldon ISD strives to recruit, train and retain highly qualified educators and staff. Sheldon uses numerous professional development tools such as an instructional handbook to help guide instructional coaches as they facilitate phases of the Impact Cycle with teachers. Instructional days are designated to analyze data and provide prescriptive measures for student growth with teachers.

**Starting Teacher Salary**  
**\$61,600**



## Teacher Incentive Allotment

The Teacher Incentive Allotment (TIA) program is a new SISD initiative to reward, retain and recruit highly effective teachers on every campus while providing a realistic pathway for top SISD teachers to earn six-figure salaries.

## Caught Acting & Responding with Excellence Award

Sheldon ISD launched the CARE Award (Caught Acting and Responding with Excellence) as a way to celebrate staff nominated by the community and their peers for exemplary customer service. Recipients are selected quarterly and surprised by a team of administrators, in partnership with Woodforest Bank. Award recipients are recognized at school board meetings, receive a plaque and a donation from Woodforest Bank. The district has received 200 nominations and recognized 18 employees since December 2020.



# Sheldon ISD

Every Child, Every Day



281-727-2000  
11411 C. E. King Parkway  
Houston, TX 77044



Para el informe en español, vaya a **[www.sheldonisd.com/annualreport](http://www.sheldonisd.com/annualreport)**  
o escanear abajo

