



Sheldon ISD



Annual Report 2023-2024

SUPERINTENDENT OF SCHOOLS Dr. McCall

Sheldon ISD Board of Trustees appointed Dr. Demetrius McCall as the Superintendent of Schools at the May 16 School Board Meeting, and he began working in Sheldon in June.

Dr. McCall has been the deputy superintendent for administrative services in Goose Creek CISD since 2020. He's no stranger to Sheldon ISD, having served as an assistant superintendent of administrative services, as well as the principal of C.E. King High School. His educational career includes time spent as the associate principal of Dayton High School and a speech communication and debate teacher in Channelview ISD.

Dr. McCall has a doctorate of educational leadership from Lamar University, a master's in educational management from the University of Houston Clear Lake and a bachelor's degree in science from Western Michigan University.

His wife Candice is a counselor at Sheldon ISD's King Middle School. They have two children who attend school in Sheldon ISD. Dr. McCall is active in his church and serves as a deacon.



**Best wishes in his retirement and good luck to
Dr. King Davis for seven years of service as
Superintendent of Schools in Sheldon ISD**



***"It feels good
to be home in
Sheldon ISD."***

~Dr. Demetrius McCall





Mission Statement

Sheldon ISD will provide personalized learning opportunities to ensure all students graduate college and career ready.

Every Child, Every Day



Sheldon ISD Board of Trustees
(Back left to right) Devora Myles (Member), Latricia Archie (Member),
Dr. Demetrius McCall (Superintendent),
Kristin Williams-White (Member), Eileen Palmer (Member),
(Front left to right) Erika Martinez (Secretary), Fred Rivas (President),
Angela Cormier (Vice President)

Table of Contents

- 1** Sheldon ISD at a Glance
- 2-3** Bond 2022 Construction & Financial Updates
- 4-7** Personalized Experiences
- 8-10** Specialized Learning
- 11** Student & Community Partnership
- 12-13** Student & Community Success

Campuses

13

1 High School
1 9th Grade Campus
1 Alternative School of Choice
2 Middle Schools
6 Elementary Schools
2 Early Childhood Centers

Students

11K

1,600+ educators and staff members

Career Academies

Pathways for students to focus on careers from early college high school to culinary arts and business to criminal justice and STEM

Growth Rate

At 53.3 square miles, SISD attracts 300-400 new students annually and serves more than 87% low-income families

Thankful for community support

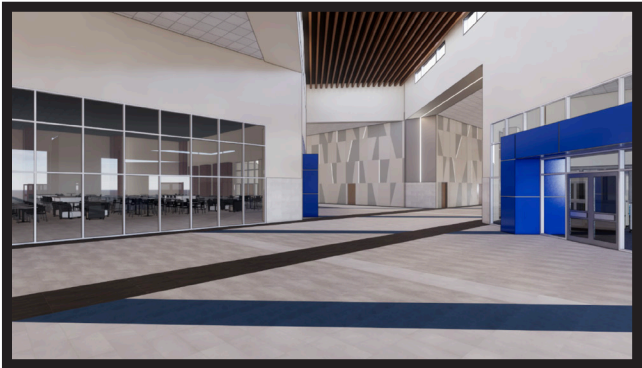
BOND ELECTION 2022



A record number of voters participated in the 2022 Bond Election with the majority voting in favor of two propositions to support new schools, expansions, safety, new school buses and campus improvement projects, as well as technology enhancements.



A new 9th and 10th Grade Campus is expected to open in 2027, serving approximately 2,200 freshman and sophomores. The campus will boast full academic features with collaborative spaces, performing arts facilities, library, cafeteria and gymnasium and will be located on the southside adjacent to the King Senior High School.



Rendering of new 9th and 10th Grade Campus



Once the new 9th and 10th Grade Campus opens, the current 9th Grade Campus will revert to its intended purpose to serve the community as the Sheldon Education and Community Center. The center is a partnership with Harris County Public Health offering a mobile health unit and opportunities for adult and community education classes.

Construction Begins Fall 2023



Construction will begin the fall of 2023 at Null Middle School to add a new wing to the east of the building providing 16 new classrooms, three science labs, a new administration area, and upgrades to the bus loop to accommodate more space for loading and unloading students.

Cravens Early Childhood Academy additions include eight new classrooms near the southwest corner of the building to alleviate student enrollment growth.



Null Middle School

16 classrooms

3 science labs



Cravens Early Childhood Academy

8 classrooms



***Sheldon ISD
remains committed
to responsible
financial
stewardship.***

**Sheldon
ISD
receives
superior
finance
rating**



Sheldon ISD has received an "A Superior rating" for quality financial management practices for the 2022-23 school year. The state's school financial accountability rating system, known as the School Financial Integrity Rating System of Texas (FIRST), ensures that Texas public schools are held accountable for the quality of their financial management practices and that they improve these practices.

Sheldon Tax Rate: \$1.415

**General
Operation
Fund**

68%32 **Debt
Service**

FUNDING GOES TO

62%

Instructional Related



20%

**Maintenance &
Transportation**



13%

Administration



3%

Other



2%

Athletics/ Co-Curriculars



For the 2022-2023 school year, Sheldon ISD has benefitted from grants in the amount of **\$33,510,660.95** to support district goals and expectations. Grant funds support teaching and learning, social emotional learning, safe and secure schools, after school program academic and enrichment components.

It takes a village to raise a child. Sheldon ISD believes the success of each child is a partnership between the school, home and community. Academic programs are personalized for students at every level.

Ready-Set-Grow

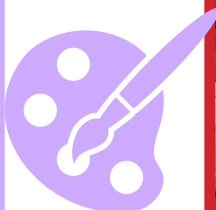
Research shows that 90% of a child's brain development happens before the age of five. Therefore, the district is proud to have two early childhood academies that focus on and serve approximately 1,200 pre-k and kindergarten students. The district has partnered with Fueling Brains and has implemented a left brain, right brain, movement approach to instruction to develop the executive functions (cognitive flexibility, working memory, and inhibitory control) of each child. The early childhood academies strive to provide lessons based on children's interests, self-inquiry and learning through play. With one teacher and one instructional assistant in each pre-k classroom, students learn how to learn and are provided a strong foundation to begin their educational journey.





Discover Your Direction

Compass Schools provide parents an opportunity to make a choice in a program that fits their child's interests. Sheldon ISD believes parent voice is an essential part in a child's education. This program offers three tracks (Performing and Visual Arts, Science, Technology, Engineering, and Math, and Technology) and is for all students enrolled in Sheldon elementary schools. Each program is offered at two elementary schools in Sheldon.



New STEM Opportunities

Sheldon offers a Science, Technology, Engineering and Math Academy beginning in the 6th grade. Our STEM students participate in project-based learning in all of the core classes as they follow the engineering design process and work in groups to find solutions to real-world problems while building tech skills and soft skills for the future workforce. Our high school STEM students follow programs of study and will graduate with a STEM Endorsement in either Computer Science, Engineering, or Biomedical Science and 15-60 college credits completed along with industry-based certifications such as a FAA Drone Pilot License.



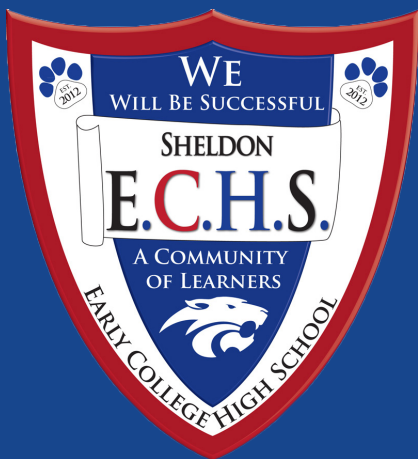
Beginning in 2023-24, the high school program will be a P-Tech Academy (Pathways in Technology Early College High School) providing a way for students to receive endorsements in areas like engineering, computer science, cybersecurity and biomedical science as well as an opportunity to earn an associates degree in STEM.



STEM students in the Class of 2023 received **\$2.1 million** in scholarships.



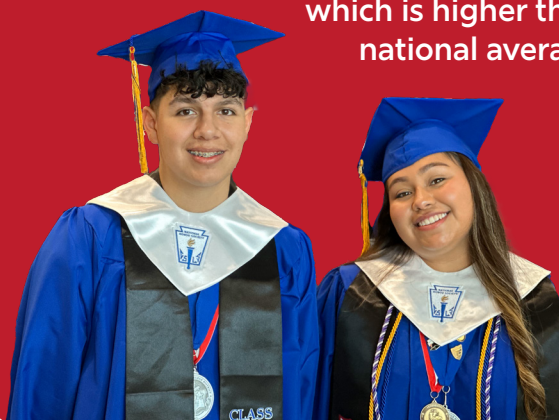
College Ready



The Early College High School is a small personalized school designed for qualified students to simultaneously earn a high school diploma and an Associate's Degree or up to two years of credit toward a Bachelor's Degree. Sheldon ISD's Early College High School began 2003 and is founded on the principles, research, and support of several partner organizations, including the Bill and Melinda Gates Foundation. Sheldon's Early College High School utilizes innovative methods and provides the academic and social support systems to promote student success in intensive, college preparatory studies. Sheldon Early College High School has partnered with San Jacinto College North to combine high school and college-level classes beginning in the ninth grade.



41% graduating with associates degree which is higher than the national average.



Class of 2023

\$4.14 in Academic Scholarships
MILLION

321 Industry-based Certifications

1 Dell Scholar & Google Scholar

2 ROTC Army Scholarships

ENLISTED

6 ARMY

4 NATIONAL GUARD

2 MARINE

2 NAVY



796
Graduates

Be the VILLAGE

Specialized programs in Sheldon benefit the whole child



The **Fine Arts** department is sharing its spark across all of Sheldon ISD. The district serves "Every Child, Every Day" by providing high-quality fine arts learning, growth, and performance opportunities beginning at the early childhood academies through high school.



100% of Elementary and Early Childhood Academy students receive weekly instruction in Fine Arts.

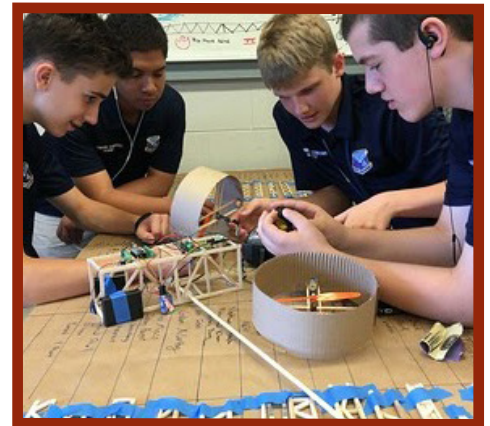


93-95% of Middle School students receive instruction in Fine Arts.



46% of 9th Grade and King High School students receive instruction in Fine Arts.

C.E. King High School Choir took 5 choirs to UIL Concert and Sight-reading, our largest participation ever, and earned 2 Sweepstakes awards. Choir also started an after-school gospel choir called Voices of King to perform at campus and community events. 9 Choir students earned membership in the TMEA All-Region Choir with two students advancing to the third round of the All-State Choir audition.



Null Middle School Civil Air Patrol earned the Quality Cadet Unit Award for its 12th consecutive year as one of the top 5% of units nationally.



C.E. King High School Theatre had 22 Tommy Tunes Nominations with four Finalists and one Winner (Outstanding Technical Achievement) for their musical. Their UIL One Act Play advanced to the Region level and earned Best Performer, Best Crew, four All-Star Cast, and one All-Star Crew awards.



C.E. King High School Art earned 15 Regional Superior Ratings and qualified five student artworks for the Visual Arts Scholastic Event (VASE) State Finals - our highest number of state qualifiers ever - and two of those students won State Medals.

Every child deserves an education, and the **Special Education** department is dedicated to providing individualized student-focused programming options accessible to all children regardless of race, gender, economic status, physical, emotional or cognitive abilities. Students are empowered by preparing for future education, employment and independent living opportunities through the development of academic and social-emotional skills. Special Education is a supplementary program that addresses the provision of a free and appropriate education to students with special needs, including students with a variety of disabilities requiring additional services or assistance in order to make educational progress.



Dual Language is a program of choice offered beginning in kindergarten at the early childhood academies and at each one of the Compass Schools: Royalwood, Sheldon, and Sheldon Lake Elementary Schools. The dual language classrooms combine native Spanish speakers with native English speakers to provide 50% instruction in each language through fifth grade. The goal of the program is for students to become bilingual, biliterate and bicultural. At the end of fifth grade students are able to earn their Spanish I credit and can continue their Languages Other than English (LOTE) Spanish classes to gain high school credit before they enroll in ninth grade.

1.44 MILLION Athletic Scholarships



2023
SEASON
9-5
**First Time State
Quarter Finalists**

GIRLS Soccer
JVB 2ND
Freshmen
Soccer
League

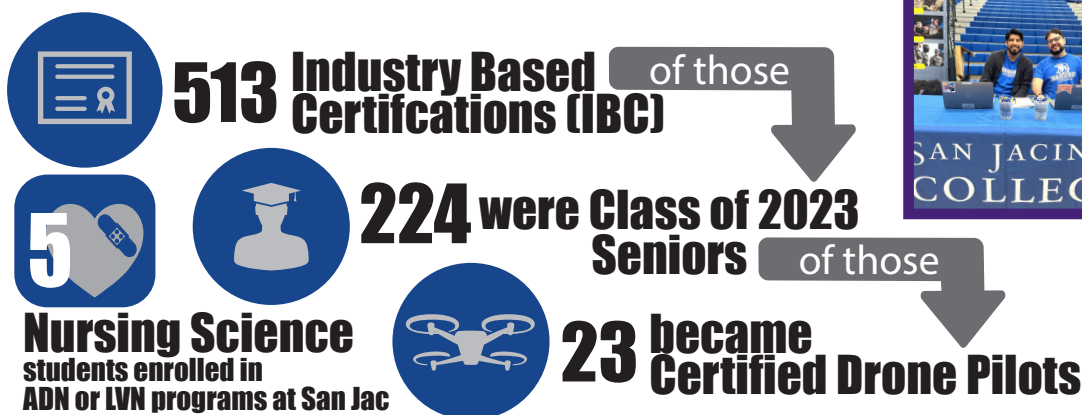
BOYS TRACK
**REGIONAL
QUALIFIERS**

GIRLS Soccer
**Varsity
Panther
Kick-Off
Tournament**

AVID stands for Advancement Via Individual Determination. AVID is offered to all secondary students, which helps prepare them for the rigorous work in Dual Credit and Pre-AP/AP courses. In addition to providing this to all secondary campuses, Sheldon ISD is an AVID district, with all elementary campuses providing AVID support to help students be more prepared for their secondary decisions. Sheldon Elementary was announced as an AVID Showcase Campus during the 2022-2023 school year. Sheldon Elementary is one of 2 AVID Elementary Showcase campuses in Texas.



The Sheldon ISD **Career and Technical Education (CTE)** program consists of 29 rigorous Programs of Study that involve a multiyear sequence of courses that integrate core academic knowledge with technical and occupational knowledge. These programs provide students with a pathway to postsecondary education and careers. CTE programs provide opportunities for students to earn Industry Based Certifications and/or Technical Dual Credit Certificates from San Jacinto College. The Dual Credit Programs include programs such as Cosmetology, Criminal Justice, Electrical, Medical Assisting, Pharmacy, Welding.



The King High School **College & Career Center's** mission is to assist the students of C.E. King High School, Sheldon Early College High School, KASE, and C. E. King 9th Grade Campus with their post-secondary planning as they progress through high school. The goal is to provide every student with individualized college and career advising and assistance to ensure their success in different facets of their lives beyond high school graduation.

Senior Facts

75% Applied to at least 1 college

77% Applied for Financial Aid

84% Took the ACT or SAT Exam

The success of students in Sheldon ISD is a partnership with the home and school. Each community member plays a key role in the academic and personal achievements of our students.

The district provides **Newcomer students** specialized classes during their first year enrolled in the United States to include English for Speakers of Other Languages (ESOL) and sheltered classes for core content classes with teachers trained in Content-Based Language Instruction (CBLI). These classes provide students new to the country accelerated English acquisition. The Newcomer Academy Center is located at King Middle School and King High School.



The Sheldon ISD **21st Century After School Program** supports the creation of community learning centers that provide academic enrichment opportunities during non-school hours for children, particularly students who attend high-poverty and low-performing schools. The program offers students a broad array of additional services, programs, and activities, such as youth development activities, service learning, nutrition and health education, drug-and violence-prevention programs, counseling programs, arts, music, physical fitness and wellness programs; technology education programs, financial literacy programs, environmental literacy programs, mathematics, science, career and technical programs, and more.



Success of our students includes the community.

The **Blue Card** program benefits community members at no cost. Currently 130 community members are Blue Card members. Residents of the district ages 65 and up can become Blue Card members who receive free entry to Sheldon ISD sport events and fine arts events within Sheldon ISD as well as a free annual luncheon.



The **Ambassador Academy** keeps parents and the community engaged in the work in Sheldon ISD by providing a behind the scenes look at programs and operations. Participants graduate from the program feeling encouraged and excited to spread the good news in Sheldon ISD with other families and residents.

The **Sheldon ISD Education Foundation** awarded \$68,000 in 2023. To date, the Foundation has awarded more than \$186,000 in innovative teaching grants to Sheldon ISD educators. The Foundation hosts numerous fundraisers to raise dollars to put back into the classroom to support teachers. To get involved, go to www.sheldonisd.com/sef



Adopt a School and give back to our students - Businesses may work directly with a campus to help support in numerous ways. Through volunteerism, mentorship or in-kind donations, there are many ways to assist. Go to www.sheldonisd.com/pie to learn more about being a Partner in Education

We Need Volunteers Like You

The Sheldon Partners in Education program creates school-support opportunities for parents, businesses and the community by offering a Families in Action volunteer program. Volunteers can donate their time and service to Sheldon ISD classrooms at any campus and all grade levels.

Carroll Elementary was named the Sheldon ISD Partners in Education (PIE) Volunteer Campus of the Year logging approximately 1,640 volunteer hours from August 2022 to April 2023. The current estimate for the value of a volunteer hour is \$29.95, according to Independent Sector, the nation's largest non-partisan coalition of nonprofit organizations. The volunteers of Carroll Elementary have contributed the equivalent of roughly \$49,118 to Sheldon ISD. Sheldon ISD volunteers across the district worked more than 6,327 hours throughout the 2022-23 school year, equating to \$189,493.65.



People make a difference. Welcome home in Sheldon ISD!

Sheldon ISD strives to recruit, retain and reward employees. As a fast growth school district, Sheldon ISD offers plenty of professional development days, optimal training and collaboration opportunities, competitive salary and benefit plans, plus an onsite employee daycare.



Sheldon ISD employees can benefit from the **Sheldon Early Learning Center** which is a licensed childcare center rated three stars with Texas Rising Star. The ELC utilizes the Frog Street Curriculum, which includes early reading and math skill building, fine motor development, and vocabulary building as well as Baby STEM program.



Be the
VILLAGE



281-727-2000
11411 C. E. King Parkway
Houston, TX 77044



Para el informe en español, vaya a
www.sheldonisd.com/annualreport
o escanear abajo

