

The background features a window with a white frame and a light-colored arch. Six hanging plants in woven baskets are arranged along the top edge. The baskets alternate in color between orange and yellow. The plants have green stems and small blue or orange flowers. Below the window, a row of potted plants is shown. From left to right, there is a tall green plant with long, thin leaves in an orange pot; a cactus with two red flowers in a white pot; a plant with dark green, pointed leaves in an orange pot; a plant with large, dark green, fan-shaped leaves in a white pot; a plant with broad, dark green leaves in an orange pot; and a plant with large, light green, pointed leaves in an orange pot.

***Welcome to Back To School  
Night at Taub Middle School!***



*Meet your 6th grade  
History Teacher,  
Mrs. Muñiz*

I can best be reached via  
email at:  
[mamuniz@patersonschools.org](mailto:mamuniz@patersonschools.org)



# *School Supplies Needed for History Class*

- ★ Chromebook and charger
- ★ Headphones
  
- ★ Reusable water bottle (suggested)
- ★ Personal bottle of hand sanitizer (suggested)
- ★ Clorox or Lysol wipes (suggested)
- ★ Personal pack of tissues (suggested)



# *JATS School Uniforms*

- ★ Uniform: Burgundy polo shirts and khaki pants, skirt or dress; burgundy or grey sweater (with school logo)
- ★ Shoes: Sneakers or solid black shoes
- ★ Gym Wear: Gray t-shirt, shorts or sweatpants, sneakers

**NO HOODIES**

# *Cell Phone Policy*

Cell phone use is **not permitted** in school. No exceptions.

Students are to mute/shut off their cell phones and put them away in their backpacks before entering the building.

If a cell phone is seen during instruction, it will be taken from students and only returned when they are dismissed from the classroom.





*What will be taught this year in  
World History class?*

Geography

Prehistory

Ancient Mesopotamia

Ancient China

Ancient India

Ancient Egypt

Ancient Greece

Ancient Rome



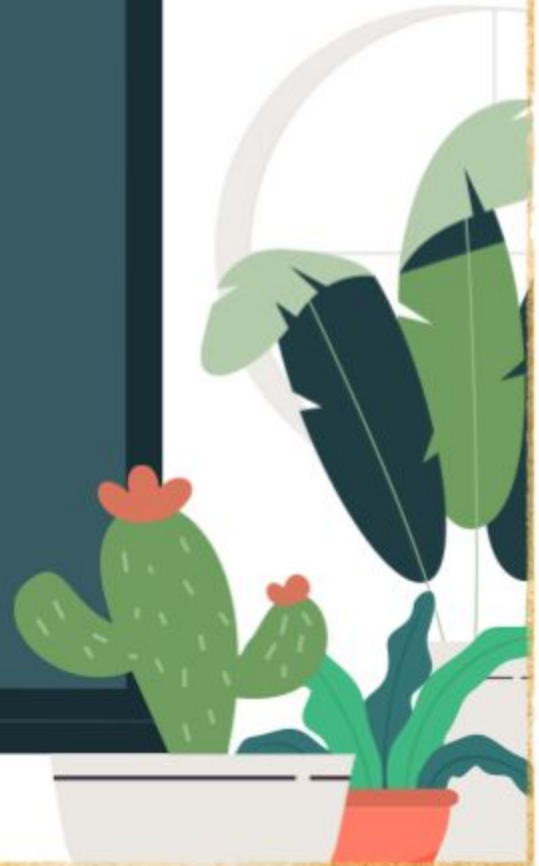
## *Parent Portal*

- To access Infinite Campus, visit [www.paterson.k12.nj.us](http://www.paterson.k12.nj.us)
- Click on Parents, then Parents Homepage
- The Infinite Campus link is found under Parent Resources

Username: studentID#  
Password: paterson1

# *Class Expectations*

- Be seated at your desk when the tardy bell rings.
- Maintain a clean and orderly work area.
- Complete all work and turn it in on time.
- Be responsible for your own learning.
- Respect the teacher, the classroom, and other students.





# *Homework and Classwork Policy*

- Homework and classwork assignments are expected to be completed on time
- Late work will be marked Missing in Infinite Campus and it will be a zero until the work is completed
- If absent, it is the student's responsibility to make up the work in order to maintain a passing grade in class

# Grading

Grades are based on the accumulation of points. Points are based on:

Classwork and participation: 40%  
Exams: 30%  
Projects: 20%  
Homework: 10%

Grades are posted on Infinite Campus and updated regularly.

Major assignments, projects, and tests can be resubmitted.

It is the student's responsibility to ask to retake an assignment.





***Your child's  
responsibilities as a  
middle school student***

Chromebooks should be charged at all times and ready for class.

Know due dates and submit all work on time.

Check Infinite Campus regularly.

The background features a light-colored wall with a large, faint archway. Five hanging plants in woven baskets are arranged along the top, alternating between blue and orange flowers. The bottom of the image is filled with a variety of potted plants, including a cactus with red flowers, a snake plant, and several broad-leafed green plants in different colored pots.

# *JATS school website*

<https://dbta-pps-nj.schoolloop.com>