



WHITE BEAR LAKE AREA SCHOOLS



SCHOOL BOARD UPDATE

School Board Meeting

October 23rd, 2023



White Bear Lake
Area Schools



White Bear Lake
Area Schools

SCHOOL BOARD UPDATE PRESENTATION AGENDA



- Sunrise Design Update
- Construction Updates
- EdSpaces 2023 Preview
- Questions / Discussion





SUNRISE PARK DESIGN PRESENTATION

October 23, 2023



White Bear Lake
Area Schools

REFERENDUM PROJECTS UPDATE

SUNRISE PARK DESIGN



Design inspiration began with the history of the building being called Sunrise Park and in the Sunrise Park neighborhood.

Sunrises are associated with new beginnings, light, illumination and welcoming.



CORE PLANNING GROUP DRAFT PROJECT COMMITMENTS

- Sunrise Park should communicate the culture of White Bear Lake Area Schools including excellence, collaboration, friendly, welcoming, professional, and customer service oriented.
- The building should include clear wayfinding.
- There should be clear distinctions, including security, between different programs within the building.
- Sunrise Park should provide opportunities for informal collaboration.
- Center to accommodate collaboration from across the District.



CORE PLANNING GROUP

DRAFT DESIGN CRITERIA 1 OF 4

- Visitors coming to meet with a staff member will be greeted at an entrance area and directed to an appropriate meeting space.
- There should be **flexible meeting spaces**, both scheduled and informal.
- The larger more **public meeting spaces** including the board room should be near an entry for **easy access**.
- Some offices should have the capacity to hold meetings (Supt, Asst. Supt, etc.)
- Staff need access to a space for **private phone calls**.



CORE PLANNING GROUP

DRAFT DESIGN CRITERIA 2 OF 4

- There should be **meeting space** adjacent to the **Welcome Center**.
- The **Human Resources** and **Finance** teams should be close to each other.
- **Technology** should have **storage** space near an exterior door.
- The **production** area should be near the **loading dock**.
- **Teaching and Learning, Equity, Technology** and **Student Services** should be near each other.
- The **Superintendent** should be **centrally located**. Human Resources, Finance & Operations and Communications should be near the Superintendent.



CORE PLANNING GROUP

DRAFT DESIGN CRITERIA 3 OF 4

- The design should consider **enhanced privacy toilets**, and designate staff vs student toilets.
- Space for a **Parenting Room**.
- Locker room/shower facility access for staff.
- Community Education should be near the main entry, Meals on Wheels, and the gym.
- The rooms used for **Adult Programs** should be near the **Community Service** offices and have a strong connection to **visitor parking**.
- TEC should have a strong connection to the buses, parent drop-off and the kitchen.



CORE PLANNING GROUP

DRAFT DESIGN CRITERIA 4 OF 4

- Early Childhood should have easy access to the gym, buses, parent drop off and playground.
- Meals on Wheels should be near the kitchen.



CORE PLANNING GROUP DRAFT DISTRICT OFFICE CRITERIA

- The district office should feel **cohesive** and **connected** like other spaces in the district.
- The **Teaching and Learning, Equity, Technology** and **Student Support** Departments should model a **learning studio** with various levels of openness and connection between spaces.
- **Equity** and **Teaching and Learning** to be **open to the circulation area**.
- **Student Support** to be **visually open** but be able to close a door for all team meetings.
- **Technology** to be **visually open** but be able to **lock** the space at night.
- **HR** and **Finance** to have a **direct connect** for **collaboration**.



White Bear Lake
Area Schools

SUNRISE PARK DESIGN UPDATE

DESIGN INSPIRATION

Qualities of Spaces to Highlight Levels of Collaboration

Active:

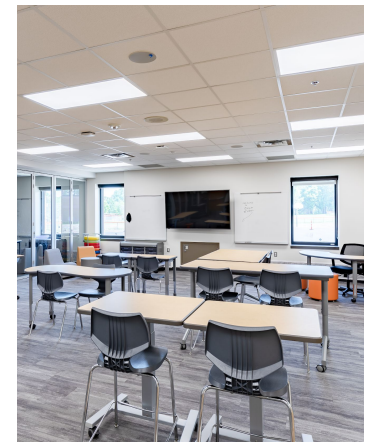
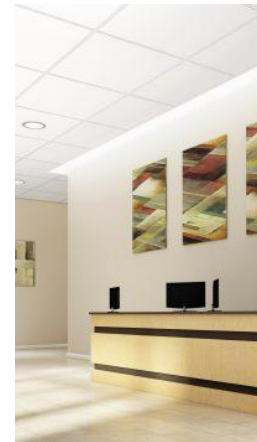
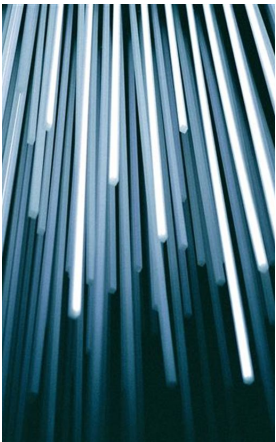
- Vibrant colors
- Bright tones
- Lighter value
- High contrast
- Applied to highlight “zones” and focal points

Teaming:

- Variety of vibrancy/ lighting levels
- Mid-range value
- Mid-range saturation
- Mix of active and focused zones within a larger area

Focused:

- Less vibrance
- Desaturated spaces
- More muted tones
- Soft lighting conditions
- Applied to give hierarchy to program

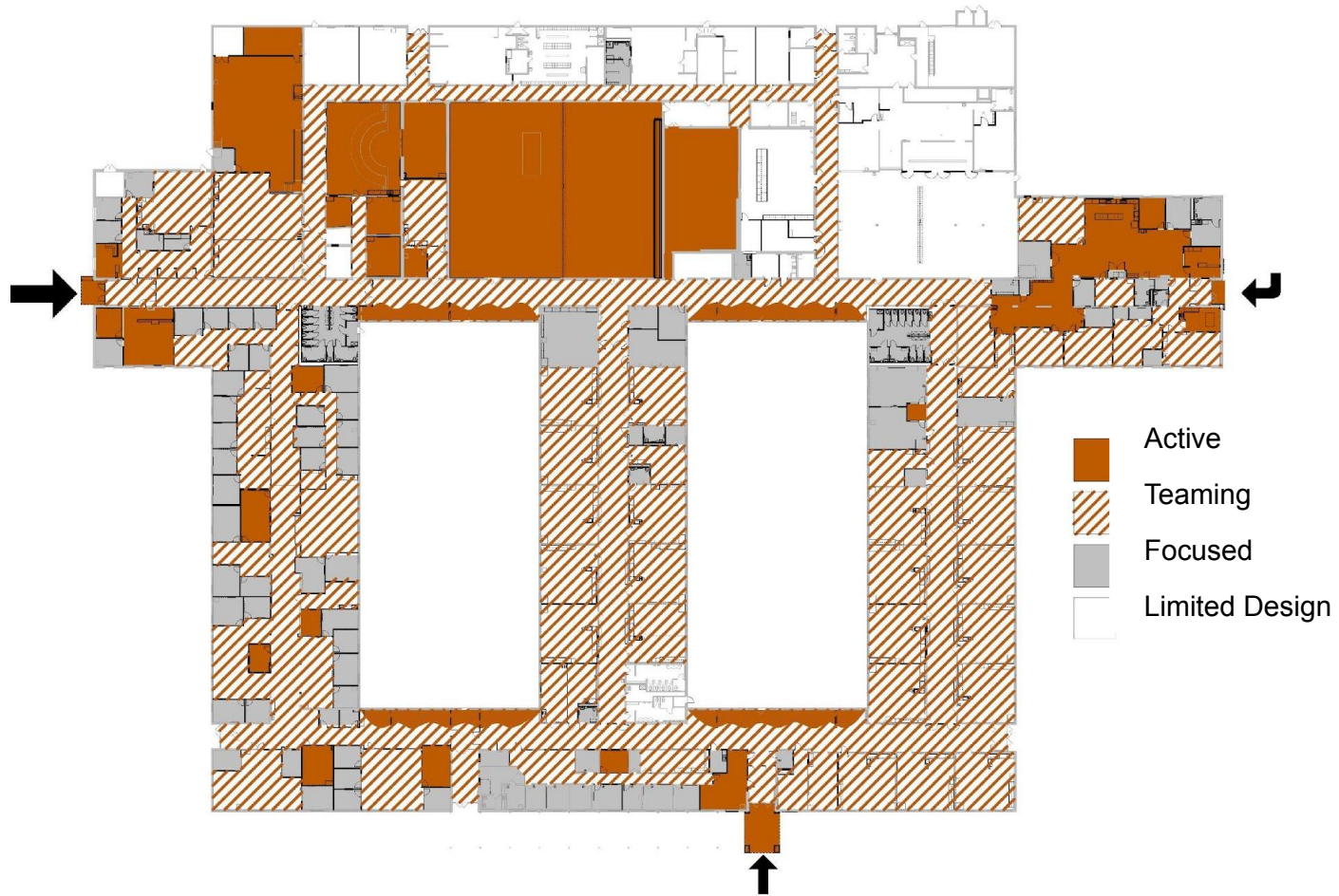




White Bear Lake
Area Schools

SUNRISE PARK DESIGN UPDATE

DESIGN APPLICATION PLAN





White Bear Lake
Area Schools

SUNRISE PARK DESIGN UPDATE

MATERIAL PALETTE





White Bear Lake
Area Schools

SUNRISE PARK DESIGN UPDATE

MAIN ENTRY RENDERING





White Bear Lake
Area Schools

SUNRISE PARK DESIGN UPDATE

EARLY CHILDHOOD ENTRY RENDERING





White Bear Lake
Area Schools

SUNRISE PARK DESIGN UPDATE EARLY CHILDHOOD ENTRY RENDERING





White Bear Lake
Area Schools

SUNRISE PARK DESIGN UPDATE

TEC ENTRY RENDERING





WB White Bear Lake
Area Schools

SUNRISE PARK DESIGN UPDATE WELCOME CENTER RENDERING





White Bear Lake
Area Schools

SUNRISE PARK DESIGN UPDATE

TOILET ROOM RENDERING





White Bear Lake
Area Schools

SUNRISE PARK DESIGN UPDATE DISTRICT OFFICE RENDERING





White Bear Lake
Area Schools

SUNRISE PARK DESIGN UPDATE DISTRICT OFFICE RENDERING





White Bear Lake
Area Schools

SUNRISE PARK DESIGN UPDATE DISTRICT OFFICE RENDERING





White Bear Lake
Area Schools

SUNRISE PARK DESIGN UPDATE DISTRICT OFFICE RENDERING





White Bear Lake
Area Schools

SUNRISE PARK DESIGN UPDATE EARLY CHILDHOOD RENDERING





White Bear Lake
Area Schools

SUNRISE PARK DESIGN UPDATE EARLY CHILDHOOD RENDERING





White Bear Lake
Area Schools

SUNRISE PARK DESIGN UPDATE EARLY CHILDHOOD RENDERING





White Bear Lake
Area Schools

SUNRISE PARK DESIGN UPDATE

TEC RENDERING





White Bear Lake
Area Schools

SUNRISE PARK DESIGN UPDATE BOARD ROOM RENDERING





White Bear Lake
Area Schools

SUNRISE PARK DESIGN UPDATE

BOARD ROOM RENDERING





White Bear Lake
Area Schools

SUNRISE PARK DESIGN UPDATE

TRAINING ROOM RENDERING





White Bear Lake
Area Schools

SUNRISE PARK DESIGN UPDATE

GYMNASIUM RENDERING





White Bear Lake
Area Schools

SUNRISE PARK DESIGN UPDATE

GYMNASIUM RENDERING



What's Under Construction?





REFERENDUM PROJECTS UPDATE

STATUS OF REFERENDUM PROJECTS

South Campus Phase I (Gym)	100%
Transportation	100%
Lincoln Elementary	100%
Matoska Elementary	100%
Vadnais Heights Elementary	100%
Willow Lane Elementary	100%
North Star Elementary	100%
South Campus Phase 2	100%
Birch Lake Elementary	100%

Lakeaires Elementary	100%
ALC Phase III	95%
Otter Lake Elementary	99%
WBLAHS	85%
Oneka Elementary	96%
Central Middle School	3%
South Campus LTFM	0%
Sunrise Park	0%

*Based on percentage billed by contractors
(60) Day Lag from Substantial Completion to 100%



White Bear Lake
Area Schools

SOUTH CAMPUS BALL FIELDS CONSTRUCTION UPDATE

Start Date: May 1st, 2023

Finish Date: August 4th, 2023

Project Highlights:

- Demolition of Old Hockey Rinks & Lighting
- 200,000 SF of New Baseball Field and preparations for new Hockey Rink, Storage Areas and associated site restoration
- 1,000 LF of New Walking Path
- New Lighting, Dugouts & Fencing
- *Approximately 679,836,000 new blades of grass!!*



White Bear Lake
Area Schools

SOUTH CAMPUS BALL FIELDS CONSTRUCTION UPDATE





ALC – LTFM CONSTRUCTION UPDATE

Start Date: June 5th, 2023

Finish Date: August 31st, 2023

Project Highlights:

- Overhaul of Existing Mechanical Piping & Equipment within Tunnels, Classrooms & Hallways (Air Conditioned & New Building Heat!)
- Renovations to Restrooms on Main & Upper Level
- (53) New Windows around Whole Building Exterior & new Monument Sign
- *The new Air Handling Unit has the capacity to move as much CF of Air as (20) Homes in one hour!*



White Bear Lake
Area Schools

ALC – LTFM CONSTRUCTION UPDATE





White Bear Lake
Area Schools

ONEKA ELEMENTARY CONSTRUCTION UPDATE

Start Date: September 12th, 2022

Finish Date: September 1st, 2023

Project Highlights:

- 8,000 SF Storm Shelter / (5) Classroom Addition coming in at a frame weight of approximately 6,836,000 lbs (*equivalent to about 1,139 blocks from the Pyramid of Giza*)
- Updated classrooms, media center, lockers & safety/security systems
- Site improvements including new sidewalks, plantings & a filtration basin (*capable of filtering 58,411 Gallons of groundwater in every day*)



White Bear Lake
Area Schools

ONEKA ELEMENTARY CONSTRUCTION UPDATE





WHITE BEAR LAKE AREA HIGH SCHOOL CONSTRUCTION UPDATE

Start Date: June 15th, 2021

Finish Date: November, 2024

Current Project Highlights:

- In some capacity have, completed/are underway with all aspects of the (10) Phase 595,287 SF worth of Additions and Renovations (*that is enough CF of space to store approximately 190,491,840 books*)
- Areas currently under construction:
 - G/H (100's & 200's Wing)
 - Area E (New Union)
 - P/Q (300's & 400's / Gym Wing)
 - Area D (500's / Music Wing)
 - Area A (New Entry / Offices)
 - Area C (New Band / Music)
 - Area D (New Auditorium)
 - Completed (12) Acres of Synthetic Turf Fields
 - Almost all of the (62) Trade Partners a part of this project are on-site



White Bear Lake
Area Schools

WHITE BEAR LAKE AREA HIGH SCHOOL CONSTRUCTION UPDATE





CENTRAL MIDDLE SCHOOL CONSTRUCTION UPDATE

Start Date: July 24th, 2023

Finish Date: August of 2025

Current Project Highlights:

- Multiple phases including 11,00 SF Storm Shelter / Gym Addition
- 197,000 SF of renovations to create additional classroom spaces along with updated media center and safety/security improvements
- Have completed portions of underground utility upgrades to accommodate new addition as well as improvements to existing systems
- Have began backfilling the newly poured footings and foundations for the Storm Shelter / Gym addition with Precast Walls to follow in November
- Additional Interior Renovation phases will begin the summer of 2024 & wrap up in time for School Start in 2025



White Bear Lake
Area Schools

CENTRAL MIDDLE SCHOOL CONSTRUCTION UPDATE





REFERENDUM PROJECTS UPDATE

UPCOMING PROJECT SCHEDULE

- South Campus LTFM
 - Construction Start: June, 2024
 - Complete: August, 2025 (Two Phases)
- Sunrise
 - Construction Start: July, 2024
 - Complete: December, 2025

EdSpaces Conference Preview



#edspaces



EDspaces

Designing the Future of Education
Charlotte, NC | November 7-9, 2023

Creating Inclusive Elementary Environments Where Students Lead Their Learning

November 7th, 2:30 pm



EDSPACES CONFERENCE PREVIEW PRESENTATION AGENDA

Introductions

Students Leading Their Learning

North Star Elementary Virtual Tour

Involving Stakeholders: Strategic Planning

Involving Stakeholders: Design Process

Cultivating the Necessary Culture

Small Group Exercise

Q&A





WHITE BEAR LAKE AREA SCHOOLS



SCHOOL BOARD UPDATE

THANK YOU!



White Bear Lake
Area Schools

www.isd624.org

