

Process Improvement Meeting Agenda – 10/30

- MEVA Mission and Vision.
- Celebrating MEVA's faculty – Teacher Feature.
- MEVA's Human Resources and Maine Educators' FrontLine WarmLine.
- Additional Free Clinical Services – Stephanie Emery.
- Softphones – Stephanie Emery.
- Win over the student initiative.
- MTY (MEA) Testing Update.
- Domo Tool with filters for checking course grades: <https://brightspace-meva.domo.com/page/-100000/kpis/details/659998786> .
- MTSS Structure and Brightspace Highlights – Christina O'Grady.
- Teacher/Support Teacher Brightspace Questions/Training Needs and Advisory Reminder – Don Fournier.
- Students' Accommodations – Lena Vitagliano.
- MEVA Academic Assessment Calendar.
- What do we do with all that academic assessment data?
- Maine App Challenge – Roberta Polland.
- Guidance Department Update – Heather Tyler and Dan Pierce.
- Other and next Process Improvement Meeting on **Monday, November 6th, 3:00 pm.**

MEVA Mission and Vision

School Mission:

Maine Virtual Academy's (MEVA) mission is to develop **each** student's full potential with **learner-centered instruction**, research-based curriculum and educational tools and resources to provide a high-quality learning experience for grade 7-12 students who are in need of **alternative educational options**. MEVA will develop an **Individualized Learning Plan (ILP)** with specific learning goals to meet each student's needs. MEVA's rigorous curriculum is **aligned** to the eight Maine content areas, the **Maine Learning Results, the Common Core State Standards and the Next Generation Science Standards**.

School Vision:

MEVA will be a leading 21st century public charter school in Maine and will **improve student learning outcomes** through **individualized instruction**, as evidenced by **student academic proficiency, student academic growth, post-secondary readiness, and the demonstration of 21st century skills such as critical thinking, problem solving, and self-direction**. MEVA will empower students to acquire the academic and life skills needed to succeed in **post-secondary education and career opportunities**. Our graduates will be **prepared** for college or other postsecondary career training opportunities

Celebrating our MEVA Faculty

- Teacher Feature in our monthly newsletter.
- https://docs.google.com/forms/d/e/1FAIpQLSfH7cfk4o1Huq-fgBGQEN1CgKo1H2f8Ah_vC4_O_bAtHXTIkQ/viewform?vc=0&c=0&w=1&flr=0
- We encourage you to participate.

MEVA Human Resources (HR)

- Jillian Dearborn is MEVA's HR Manager and Accounts Payable.
- We can address your questions about employee benefits and resources.
- Maine FrontLine WarmLine was highlighted by the MDOE:
<https://mainedoenews.net/2020/10/05/media-release-maine-frontline-warmline-now-available-to-support-maine-school-staff/>
- **The FrontLine WarmLine is available from 8 AM to 8 PM, 7 days a week by calling (207) 221-8196 or Text the word "frontline" to 898-211 for support.**

A decorative graphic of stylized white leaves on a light green background, positioned on the left side of the page. The leaves are arranged in a cluster, with some larger and some smaller, creating a sense of growth and healing.

A Time for Healing: Crisis & Trauma Counseling Services

The Cook Center for Human Connection (*Third party organization outside of MEVA & Stride*)

- Provides clinical experts & resources that specialize in trauma counseling.
- Offered to all MEVA Staff, Students & Families for a full year. (*Many thanks to our partners at Stride Inc, who donated this support to all of us.*)

Many Options for Support:

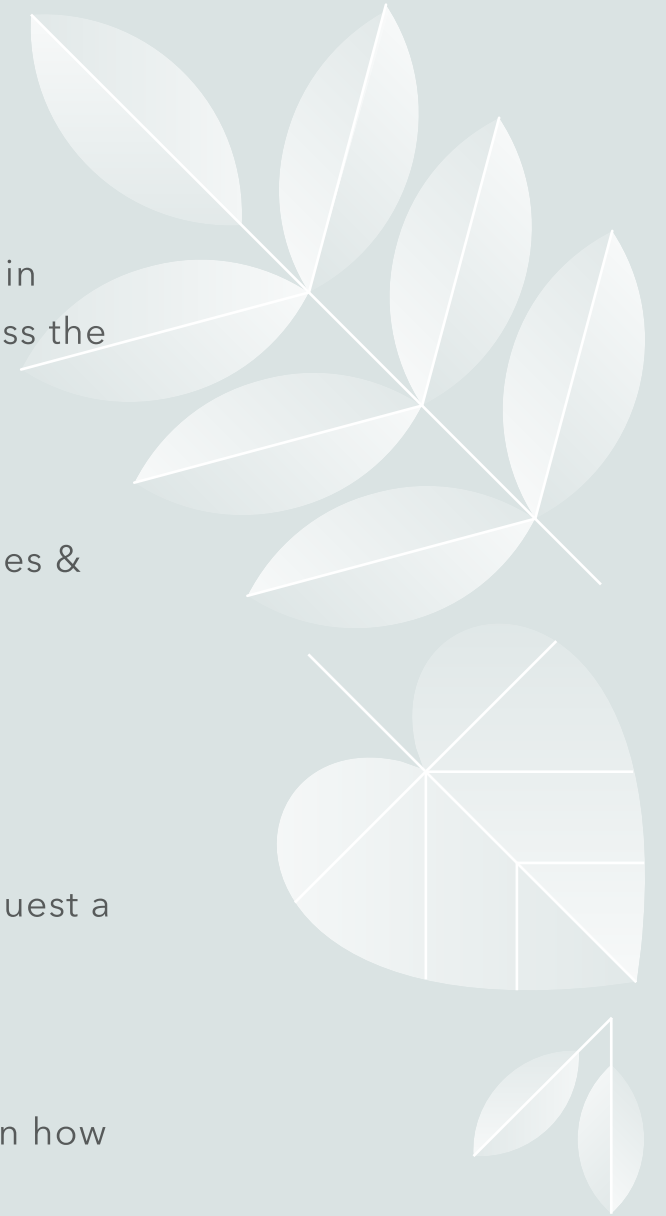
- **1. Free independent resources; webinars & courses.** Use the QR codes embedded in the FAQ flyer to access these resources, linked here along with independent courses at: <https://parentguidance.org/all-courses/> click on grief and loss, [Crisis Response FAQ's with Dr Skinner](#)

- **2. Free and anonymous individualized clinical services.** Is now live and ready for both MEVA Staff, Students & Families to access here:

<https://parentguidance.org/school-coaching/> click **Get Started** and follow the prompts, this is family facing but still applies the same way/process for Staff.

Ready to Help!

- The Cook Center has been briefed and is fully aware of the tragedy that happened in Maine. They service schools experiencing the same or similar types of tragedy across the nation.
- There is a clinical team on standby, ready and waiting to support MEVA Staff, Families & Students throughout the healing process over the coming year.
- Keep watch for special invites to your inbox that will link you to a 15 minute impact meeting, which provides you an informational workshop designated for staff and a separate session geared to families/students on how to navigate resources and request a personal and fully anonymous session.
- Bulk communications will be distributed to MEVA Families & Students separately, on how to access these resources.



Win Over the Student!

Thoughtful and consistent communication is the foundation on building successful rapport with our families and students.

Immediate intervention has been recognized as the most effective method in student retention. Every role within the school plays an important part in this effort.

Without our Students there would be no MEVA!

Win Over & Rapport

- **Win Over**: is a proactive approach/mindset. Win “back” is more reactive and is also needed in some cases, like in progress withdrawals as an example.
- **Rapport Definition**:
 - The Merriam-Webster Dictionary defines Rapport as; *a friendly, harmonious relationship especially : a relationship characterized by agreement, mutual understanding, or empathy that makes communication possible or easy.*
- **Google Dictionary - Examples of Further Meaning**;
 - 1. Rapport is a good sense of understanding and trust.
 - 2. A close and harmonious relationship in which the people or groups concerned understand each other's feelings or ideas and communicate well. Example, *"she was able to establish a good rapport with the children"*

Communication

- In ALL Cases;
 - Communication should always exhibit compassion, empathy and kindness.
 - Be an effective communicator, timely and responsive.
 - Exhibit a willingness to help and serve our families well.
 - Never forget to share the vast opportunities we have at MEVA to support our students!

Withdrawal Mitigation Process

- **Ask why?** – Use phrases like, “*Before* you withdraw, tell me about your reason. There may be something we can do for you.”
- **Listen for keywords;** lack of support, socialization, motivation challenges, tech or navigation challenges and so forth.
- **As you listen, empathize** – Understand their position and their feelings. Many times, families or students have been thinking about withdrawal for a while.
- **Advocate for MEVA’s programs** – Share information on our clubs, self-paced options, and student support opportunities. See if they are willing to have a team meeting to talk over work credit options, early college opportunities, and so much more. Some students may qualify for early graduation.
- **Document, document, document** – your mitigation efforts in contact logs within Infinite Campus, then *submit an intervention form*. Familiarize yourself with the form selections to be aware of the kinds of barriers that lead to withdrawals.
- **Link to the form:** [23-24 Rapid Intervention Form \(RIF\)](#)

Access Checks

1. Encourage students to check their school g-mails.
 2. Do tech checks.
 3. Call team meetings for struggling students at the earliest possible juncture.
-
- We have the BEST teachers in the state at MEVA. Our task is to get students to access our instruction and engage in learning.
 - This is a proven strategy to encourage students' academic growth and college readiness, as measured by the NWEA and Accuplacer.

From Cornell's TCI and CARE model.

weCARE

	WILLING	NOT WILLING
ABLE	ACKNOWLEDGE Give positive attention Join in activity Ask child to teach others	ENCOURAGE As if Offer assistance Give Choices Predict the future Make a request Natural or logical consequence
NOT ABLE	TEACH Give positive attention Join in activity Ask child to teach others	CHANGE EXPECTATIONS Change the expectation Redirect the activity Drop the expectation

Fall '23 MTY (MEA) Update – Monday, 30th, morning

Subgroup Breakdown			
	Total #	Total Tested	% Tested
Females	103	100	97.09%
Males	66	62	93.94%
7th Grade	24	23	95.83%
8th Grade	68	67	98.53%
High School	77	72	93.51%
FRL	94	89	94.68%
SPED	41	39	95.12%
Overall	169	162	95.86%

Domo Tool for Checking Course Grades

- Go to: <https://brightspace-meva.domo.com/page/-100000/kpis/details/659998786>
- Filter on the fall 2023 semester, your department, etc.
- You may also directly filter on your own name to quickly get a list of your courses.
- Students' grades are grouped by bands.
- You may drill down on a band to view students and their individual course grades.
- D2L updates the custom Domo tool each semester.



MTSS Structure

We identified students in the 0-30th Percentile on the Fall NWEA and/or who did not measure as college-ready on the ACCUPLACER as in need of intervention.



MTSS in Practice



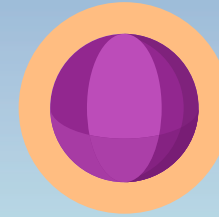
Course Placement

Based on Fall NWEA Data we placed students (with parental permission) in the course that fit their needs.



Class Structure

Most classes follow a similar structure.



RISE

A small population of students are in our RISE/Life Skills program.

Brightspace

Dr. Browne asked me to highlight courses that are using various pieces of Brightspace. I tried to take pieces from several content areas, focusing on the best practices that we are encouraging.



Select 'Next' or 'Previous' to progress through slides.


Feed your body with nourishment




Powerful foods fuel a powerful brain and body. While it's easy to reach for the pizza and cookies, these unwholesome foods only offer short-term satisfaction. "Eating the rainbow" with naturally colorful fruits and vegetables like blueberries, broccoli, and red bell peppers that contain antioxidants, vitamins, fiber, and many other nutrients can support students' growth. This leads to better grades, memory, alertness, and energy.



TEXT SOURCE: Maine Historical Society. "To 1500 People of the Dawn," *Maine History Online*, 2000-2010, p. 1.
(<https://www.mainememory.net/sitebuilder/site/893/page/1304/display>)



BANNER IMAGE: Cooper, Janet. Wabenaki encampment, ca. 1000 BCE. 1989, acrylic on paper, Abbe Museum, Bar Harbor, ME (<https://www.mainememory.net/artifact/80706>)





Visible



Add Existing

Create New



Book Recommendation

No one talks about books anymore. When was the last time you shared a book with a friend? Books used to be one of the few things people talked about.

What was the last good book that you read?





8 Language Arts Essentials Fall 2023 Paste...



[NEWSELA](#)

[No Red Ink](#)

[Edpuzzle](#)

[Sora](#)

[Class Tools](#) ▾

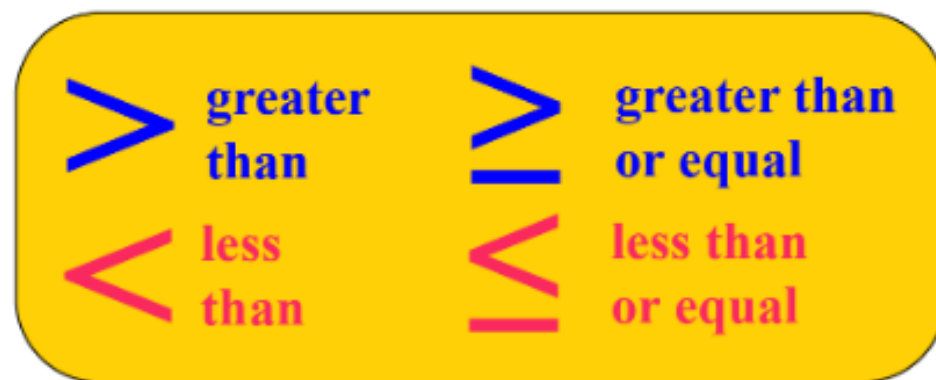
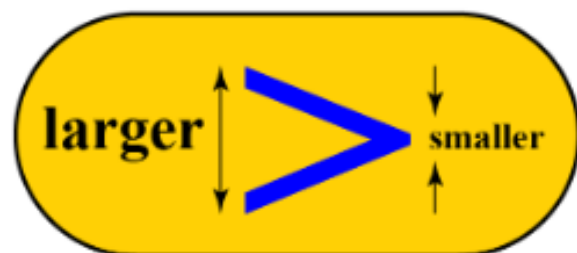
[Course Home](#)

[Content](#)

[Assessment](#) ▾

[Calendar](#)

Unit 3: Solve Advanced Equation & Inequalities



MAINE LEARNING RESULTS:

Algebraic Reasoning - Algebra: Reasoning with Equations & Inequalities



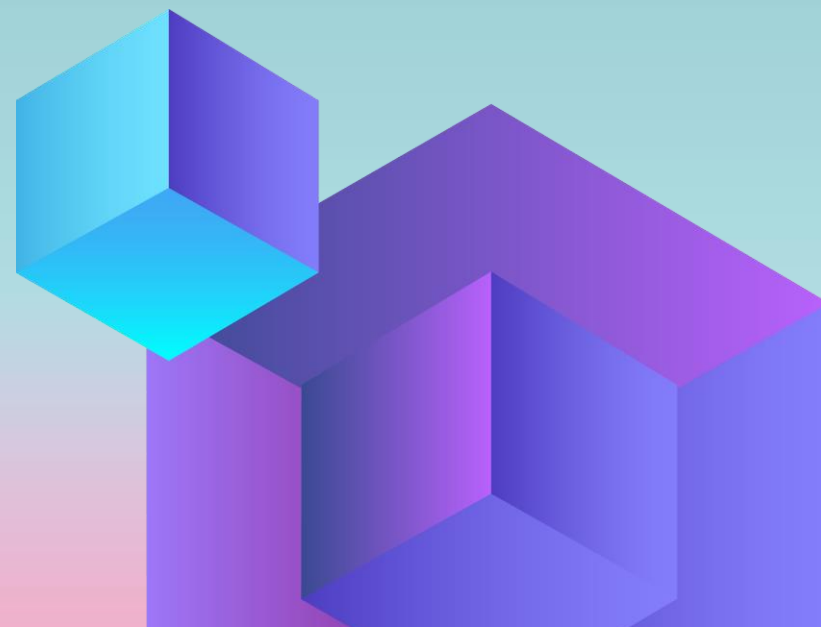


Unit 2: Atomic Structure



Unit 2 Pre-Test

Due: Oct 5, 2023 2:00 PM



percent abundance of each isotope.

Sample Problem



Calculating Average Atomic Mass



Announcements 

Gizmos Class Code 




Stephanie Martitz posted on Sep 15, 2023 8:17 AM

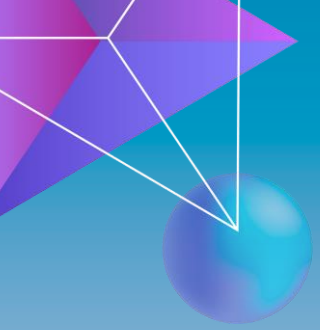
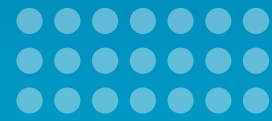
ELQ4HG6J

Newsela Class Code 



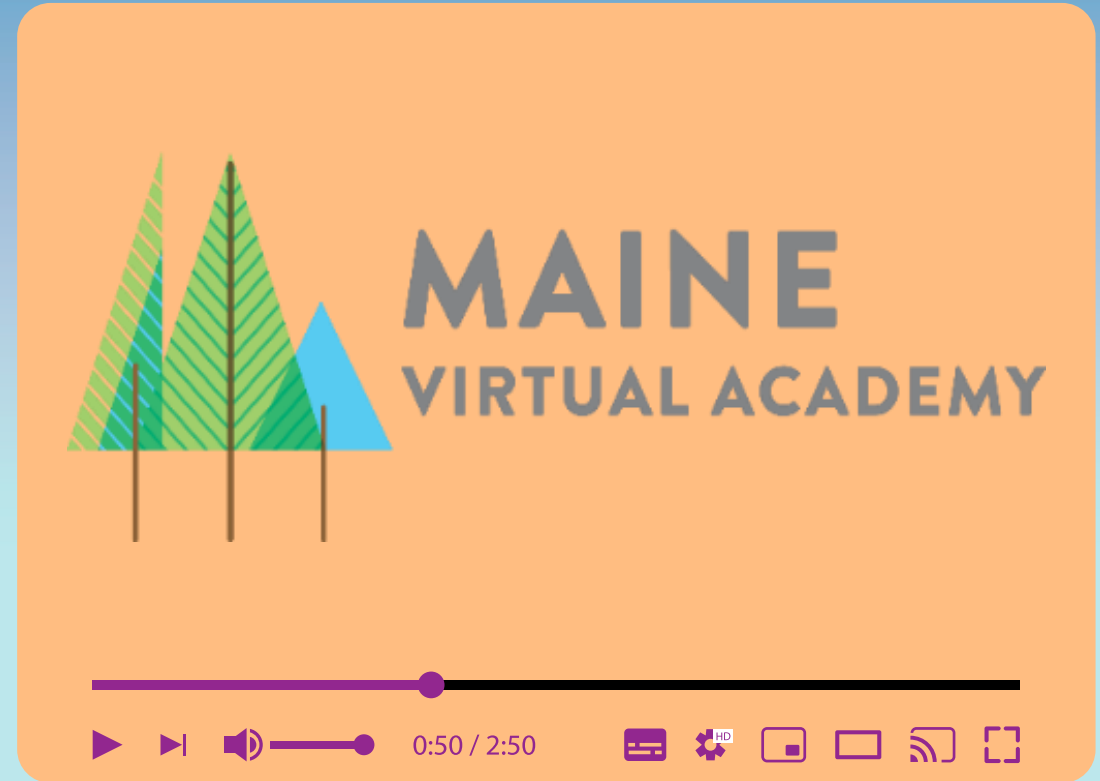
Stephanie Martitz posted on Aug 25, 2023 12:51 PM •  Edited

KE6MN6



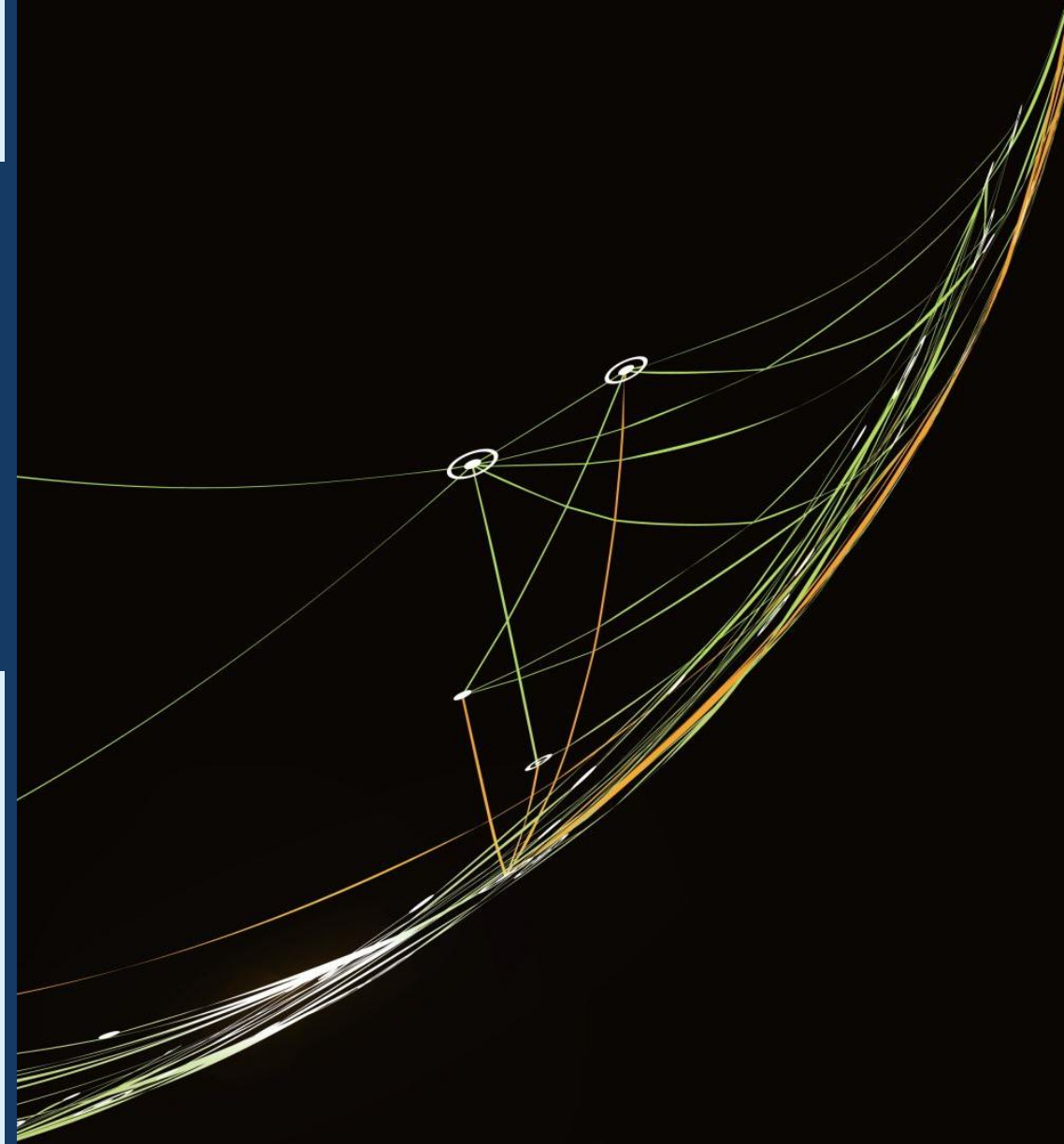
Do you want to know more?

Complete the [survey](#) to indicate if your comfortability with the tools available.



BRIGHTSPACE QUESTIONS/ TRAINING NEEDS

Advisory Reminder



SE Accommodations and Collaboration

Where to find the data you are looking for and needing
and who is your point of contact

Teachers/Case Managers and Support Staff

Middle School - grades 7 and 8 - SE Teacher/Case Manager:Jenn McNally
Support Staff: Denise Harlow, Jan White, and Roberta Polland,

Grade 9 - SE Teacher/Case Manager: Caroline Peinado
Support Staff: Kristen Schmidt

Grade 10/11 - SE Teacher/Case Manager: Meagan Coelho
Support Staff: Jenn Conrad

Grade 11/12 - SE Teacher/Case Manager: Dan Bernardini
Support Staff: Lacey Campbell



Continued. . . .

Mixed Grades - SE Teacher/Case Manager: Kelli Boucher
Support Teacher: Cheryl Brigham

Mixed Grades - SE Teachers/Case Managers: Kim Clark and Julie King
RISE Self Contained Programming
Support Staff: Clarissa Bernardini and Lisa Bernardini

Link to Google Doc with the Caseloads: https://docs.google.com/document/d/1J8vSgl8_rTvh9EH-Uo9GcTP0TPReJ6z2-Y1fPIA8J1s/edit



EDMS - Acuity Access

As a reminder-you all have EDMS/Acuity access through the following account:

Demonstration of EDMS/Acuity

STEPS:

- ~Choose either 504, Gifted or IEP
- ~The calendar will appear
- ~Go to top left
 - Use sort/search features
- ~Click on the student you are needing information on
- ~select IEP
- ~select classroom accommodations
 - scroll through / down to see them all

If you need to enlarge the text box - go to bottom right of box and grab/pull to enlarge


I have included screenshots below

ACCOMMODATION FOR STUDENTS



You should have already met and collaborated with the SE Teacher/Case Managers for the learners we serve. If there are any particular learners you would like to further discuss, please do not hesitate to reach out.

Together we can make a difference in the learning progression of these learners. Thanks for all you do!!!



ACUITY™ 

MEVIRTUALACAD IEP Tea

Show: Active Students

Sort By: Alphabetical

School: Maine Virtual Acaden

Grade: 07

IEP Status: All Statuses

IEP?: Spec. Ed. Only

Search:

- Beaulieu, R  
- Frye, A  
- Ladner, 
- Pinkham, A  
- Powers-Burns, S 
- Shedd, K  
- Wright, J  

Frye, A  

Student Details

Referrals

Evaluations

Meetings

Written Notice

IEPs

Goals and Objectives

Progress Reporting

Classroom Accommodation Service 29201

Note: Special education and related services to be provided peer-reviewed research, to the extent practicable.

Service Class Classroom Accommodation

Service

Additional Service Description

Accommodation Area: (check all that apply)

- Classroom Instruction
- Classroom Assessment
- District-wide Assessment
- State Assessment

Accommodation Description (Classroom Accommodations Only)

Description for "Other" Accommodation Type

TO ENLARGE TEXT BOX

IEP Details Goals and Objectives Services **Classroom Accommodations** Transition Assessments

IEP Details 15832

Status and Meeting/Notice In... **Status and Meeting/Notice Information**

Dates Status of IEP

MEVA Academic Assessment Calendar

2023-2024 School Year

NWEA (Fall): Math, Reading, & Language Usage	Grades 7-11, September 12-14
I-Ready (Fall): Algebra Readiness	Grade 9, August 28 - September 29
ACCUPLACER (Fall): Math & Reading	Graduating Students, Grade 12, September 12-14
MEAs (Fall): In-Person, Math & Reading	Grades 7, 8, & 10, October 2-27
NWEA (Winter): Math, Reading, & Language Usage	Grades 7-11, January 9-11
I-Ready (Winter): Algebra Readiness	Grade 9, January 15 - February 16
NWEA (Spring): Math, Reading, & Language Usage	Grades 7-11, April 30 - May 2
I-Ready (Spring): Algebra Readiness	Grade 9, May 1-31
MEAs (Spring): In-Person, Math & Reading and Science	Grades 7, 8, 10, & 11, May 2024

What do we do with all that academic assessment data?

- Virtual NWEAs inform the **MTSS process** and measure **growth** in math reading, and language usage.
- I-Ready Algebra helps gauge **algebra readiness**.
- In-Person Maine Through Year and MEA Science measure **proficiency in math, reading, and science**.
- Accuplacer measures **college readiness in math and reading**.
- **Please provide rewards and incentives for participation.**



TYLER TECHNOLOGIES
MAINEAPP
CHALLENGE

JOIN THE MAINE APP CHALLENGE!

Designed to provide Maine high school students the experience of designing, developing, and demonstrating a mobile app with a chance to win one of three scholarships!

Enter today!

Why Participate?

This is a great opportunity to explore software design and development, and a chance to win one of three scholarships totaling \$10,000. Plus, app design looks great on college applications!

How to Win

1. Design an Android™ or iOS® app
2. Create a YouTube™ video explaining what your app does and how it serves your target audience
3. Submit your app online by March 31, 2023, at www.maineappchallenge.com

Prizes

First Place: \$6,000 scholarship
Second Place: \$3,000 scholarship
Third Place: \$1,000 scholarship
Top 20 submissions receive an Oculus VR Headset.
School with the highest number of submissions will receive \$500!

Visit www.maineappchallenge.com to see the full list of rules and start designing your app today!



Guidance Update 10/30/2023

If any staff member needs support Dr. Browne would like to remind you all that you can reach out to Jillian Dearborn, our HR manager, who can provide information on insurance benefits to seek support.

You may find this resource from the National Alliance on Mental Health, Maine helpful: [NAMI Support After Lewiston Tragedy](#)

Please reach out to Dan (Grades 7-9) and Heather (Grades 10-12) regarding any struggling students. We have training and resources to support students during this difficult time.

Other

- Other topics and/or questions? We are incorporating a Q/A work session into our next meeting.
- Enter your daily schedule on your Google calendars and don't forget to add 'lunch'!
- School holidays on November 10th, 22nd, 23rd, and 24th. Please cancel your live sessions. Thank you.
- MEVA virtual high school graduation on Friday, June 7th, 2:00 pm, and virtual eighth grade recognition ceremony on Friday, June 14th, 11:00 am.
- Next Process Improvement Meeting on Monday, November 6th, 3:00 pm.