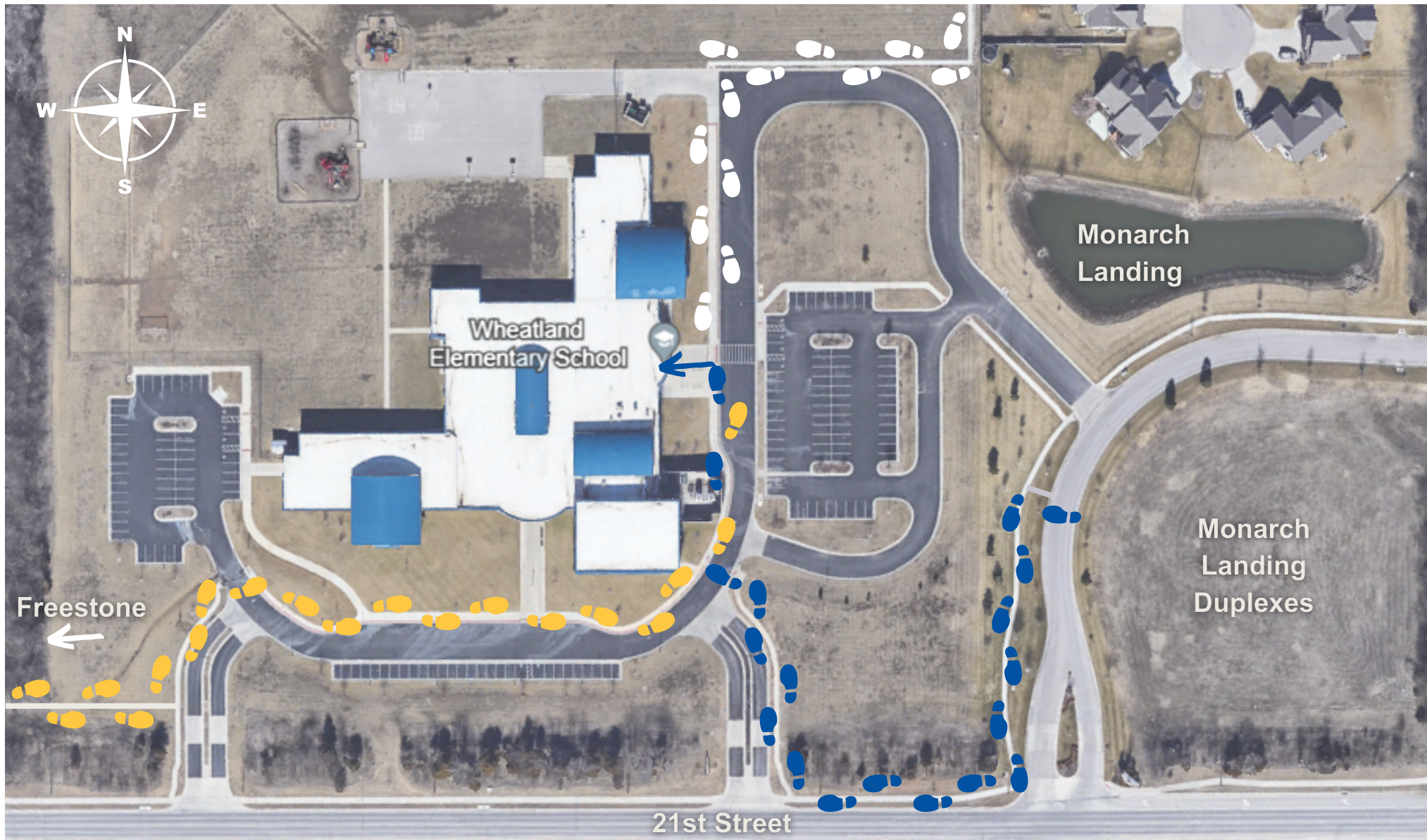


# ***WES Walkers & Bike Riders Map***



## ***Coming from the west:***

If your child walks from the west, they will walk to the east side and enter at entrance H (by art room). If they ride a bike from the west, they'll leave it by the front main south entrance on the right side along the glass wall and then walk to the east side. At dismissal, they'll exit with bus riders, get their bike, and walk to the west.

## ***Coming from the east:***

Those in the duplexes to the east should use the Flutter crossing, walk south to 21st, west to the school sidewalk, then back north up the sidewalk. They will enter the school through the east doors (Exit H). At dismissal, they will exit through the east doors (Exit H) walk south to 21st, east to Flutter, and then north to the Flutter crossing.