



Project: LODI UNIFIED SCHOOL DISTRICT
BEAR CREEK HIGH SCHOOL RESTROOMS MODERNIZATION

Owner: LODI UNIFIED SCHOOL DISTRICT
10555 Thornton Road, Stockton, CA 95209

Architect: SVA Architects, Inc.
1450 Drew Ave., Ste. 150, Davis, CA 95618

ADDENDUM 1

10/26/2023

Note: The following revisions and clarifications to the Contract Documents (plans and specifications) shall become a part of the Contract Documents. All bidders are required to incorporate all necessary changes, additions, or deductions into their proposals.

A. REVISIONS

1. ARCHITECTURAL

- A. A11.1: Demol Floor Plans
 - a. Revise concrete slab repair prep to chip out 12"x12"x1" deep area at damaged area
 - b. Revise keynote D09
- B. A40.1: Building G – Enlarged Plans & Interior Elevations
 - a. Restroom Accessory Legend note 1 revised to call for solid plastic toilet compartment partitions
 - b. Remove keynote 096513.A
 - c. Show epoxy wainscot to +7'-2" with painted gypsum board above (no FRP)
 - d. Revise keynote 033000.A to show patching concrete slab with cementitious repair compound
 - e. Revise floor plan to show concrete patch at damaged area
- C. A40.2: Building J – Enlarged Plans & Interior Elevations
 - a. Restroom Accessory Legend note 1 revised to call for solid plastic toilet compartment partitions
 - b. Remove keynote 096513.A
 - c. Show epoxy wainscot to +7'-2" with painted gypsum board above (no FRP)
- D. A40.4: Building Q – Interior Elevations
 - a. Restroom Accessory Legend note 1 revised to call for solid plastic toilet compartment partitions
 - b. Remove keynote 096513.A
 - c. Show epoxy wainscot to +7'-2" with painted gypsum board above (no FRP)
 - d. Show painted gypsum board above the epoxy wainscot
- E. A50.1: Finish & Door Schedules and Details
 - a. Revised Interior Finish Legend to replace FRP at walls with painted gypsum board
 - b. Revised Finish Schedule to replace FRP at walls with painted gypsum board
 - c. Revised Restroom Wall Detail (detail 1) to remove FRP, and instead show the epoxy wainscot on plywood to +7'-2", with painted gypsum board above



Bear Creek High School Restrooms Modernization

Addendum 1

Page 2 of 3 — 10/26/2023

A. BIDDERS' REQUESTS FOR CLARIFICATION

1. Q: The specifications call out Solid Plastic Partitions throughout the spec, however Plan Sheets A40.1 & A40.2 call for Solid Phenolic Partitions. These are very different products with different cost impacts. Please clarify the desired partition material.
A: All toilet compartments shall be ASI Global Partitions Solid Plastic (HDPE)
2. Q: Spec notes Solid Plastic Partitions throughout the Spec, however Plan Sheets A40.1 & A40.2 calls for solid phenolic partitions. These are very different products, with very different cost impacts. Please clarify the desired partition material.
A: See answer to question 1.
3. Q: Please provide the thickness of the existing concrete slab that is to be removed and replaced at BLDG F (G on plans) and a structural detail for the new concrete patch.
A: The drawings have been revised to show damaged concrete slab to be repaired with cementitious repair compound.
4. Q: Is the FRP finish (or epoxy) at BLDG Q restrooms to be full height or at a height of 8'-6"?
A: The wall finish has been revised to be epoxy wainscot to +7'-2" with painted gypsum board above it, throughout. (No FRP finish.)
5. Q: Please provide the location of the nearest 120V Panelboard to BLDG Q. Have the (2) spare circuit breakers been confirmed?
A: Contractor to field verify location of the nearest 120V panelboard that can provide the spare capacity per the Contract Documents.
6. Q: Please provide an updated power plan including the routing of power to the new drinking fountains quad receptables at BLDG K (J on plans) and F (G on plans).
A: Contractor to provide one (1) dedicated quad receptacle for each drinking fountain. Provide ¾"C.-2#12, #12G. for each dedicated quad receptacle and route to the nearest 120V panelboard that has a spare 20A-1P circuit breaker available. One (1) spare 20A-1P will be required for each drinking fountain. Contractor to field verify location of nearest panelboards and its capacity.
7. Q: Could you please provide the engineer's estimate?
A: \$785,000.
8. Q: Regarding Bear Creek HS Restroom Modernization bid, please confirm if Scranton Products can also be specified as a manufacturer for the restroom partitions.
A: Yes, Scranton Products can also be specified as a manufacturer for the restroom partitions.



Bear Creek High School Restrooms Modernization

Addendum 1

Page 3 of 3 — 10/26/2023

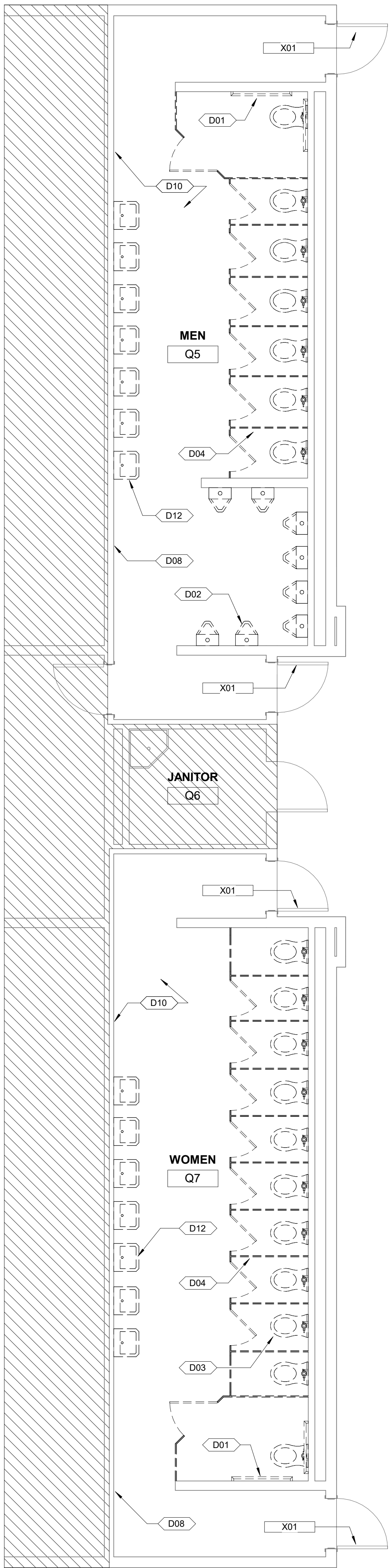
Attachments:

- Sheet A11.1
- Sheet A40.1
- Sheet A40.2
- Sheet A40.3
- Sheet A50.1

Reason: Revision & Clarification of Bid Documents

Distribution:

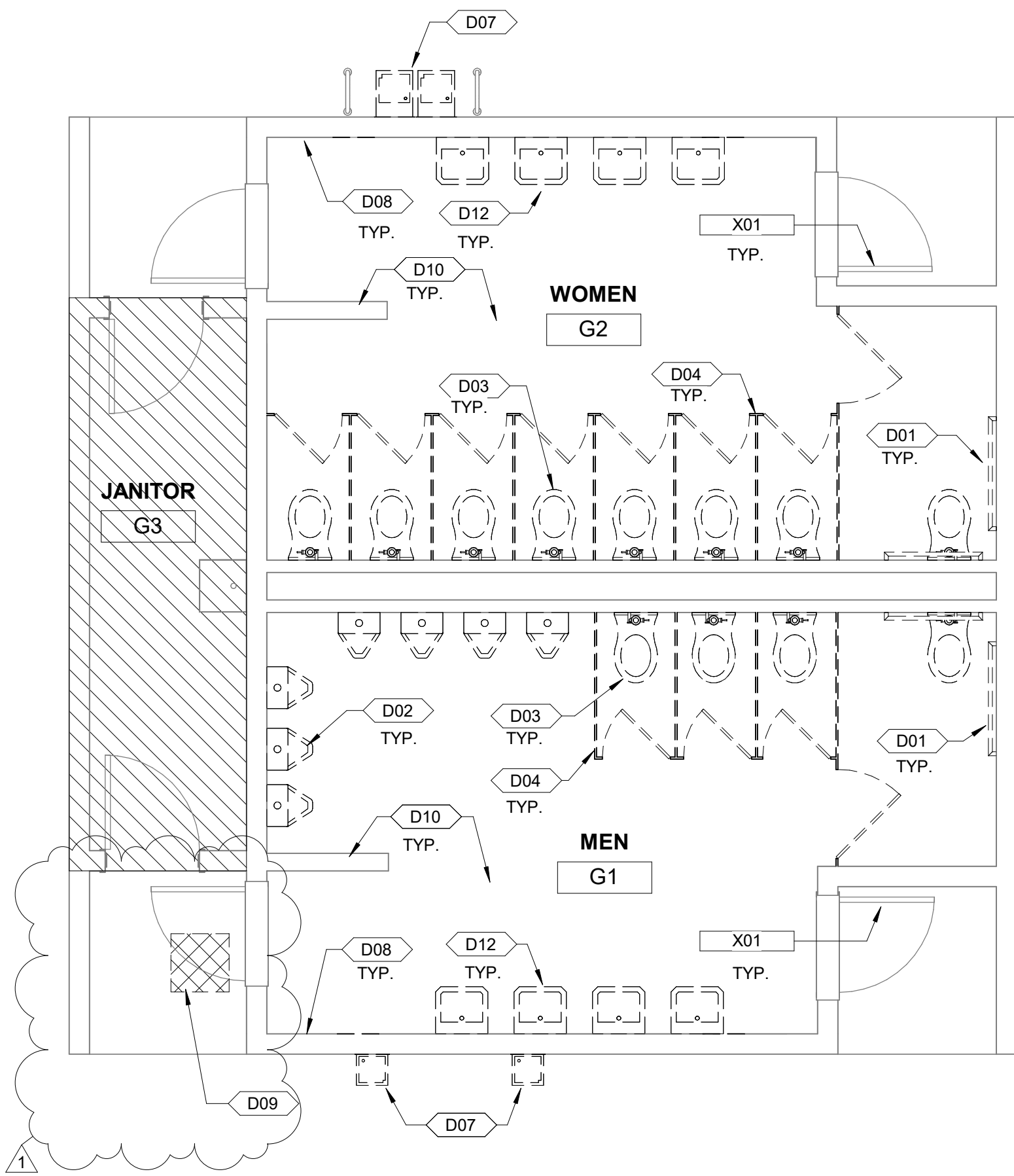
- Bidders
- Owner
- Inspector



BUILDING Q - DEMO FLOOR PLAN

1/4" = 1'-0"

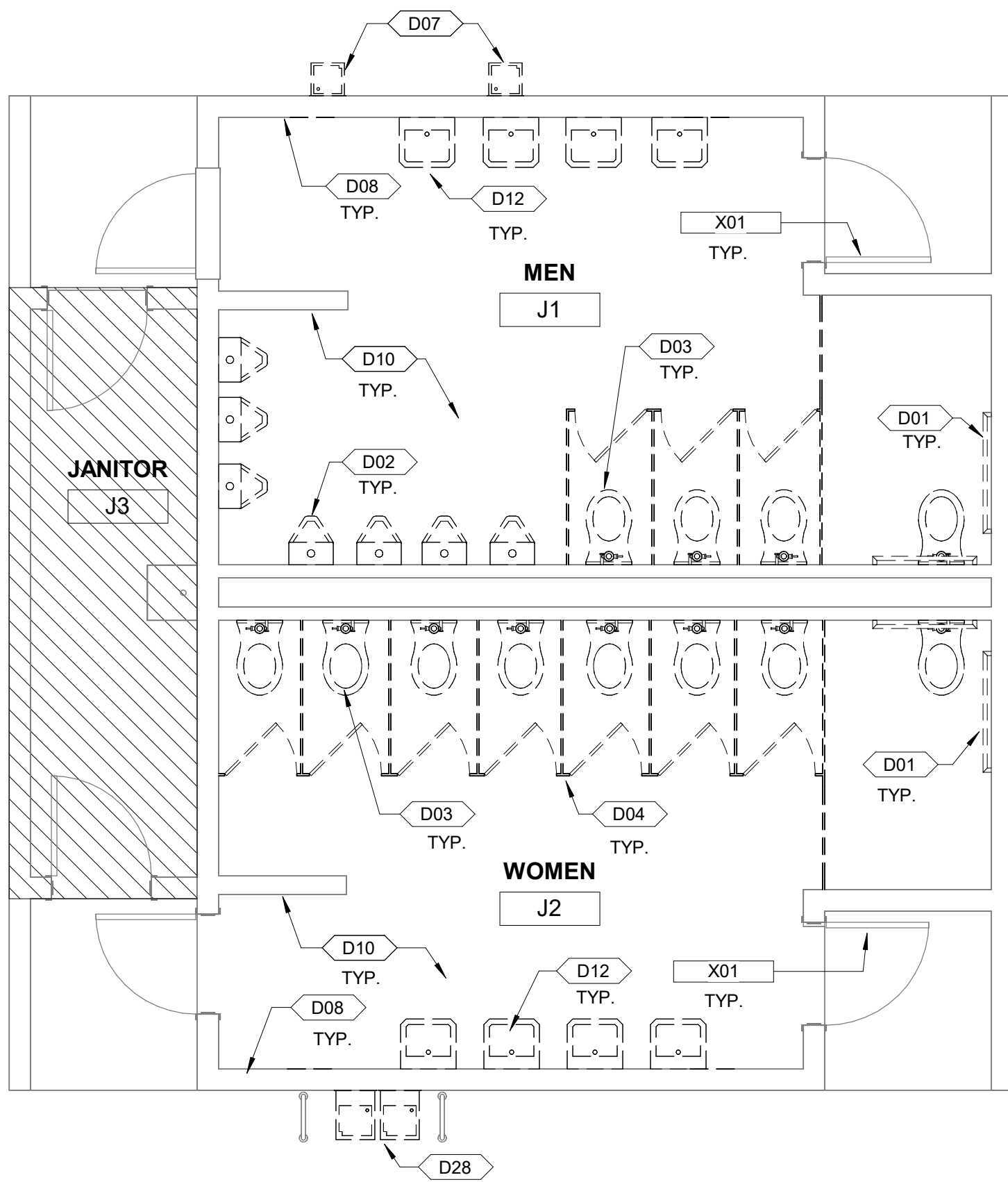
3



BUILDING G - DEMO FLOOR PLAN

1/4" = 1'-0"

2



BUILDING J - DEMO FLOOR PLAN

1/4" = 1'-0"

1

- | # | DESCRIPTION |
|-----|---|
| D01 | REMOVE (E) GRAB BAR, TYP. |
| D02 | REMOVE (E) URINAL, CAP PIPE IN WALL FOR FUTURE USE |
| D03 | REMOVE (E) WATER CLOSET, CAP PIPE IN WALL FOR FUTURE USE |
| D04 | REMOVE (E) TOILET PARTITION |
| D07 | REMOVE (E) DRINKING FOUNTAIN; CUT BACK PIPES TO WITHIN WALL, AND CAP |
| D08 | REMOVE (E) WALL FINISH |
| D09 | CHIP OUT CONC. 12" X 12" AREA AT DAMAGED SLAB TO 1" DEEP AND PREP AS REQUIRED TO PATCH |
| D10 | REMOVE (E) FLOORING AND BASE |
| D12 | REMOVE (E) LAVATORY, CAP PIPE IN WALL FOR FUTURE USE |
| D28 | REMOVE (E) DRINKING FOUNTAIN. CAP PIPING WITHIN WALL, PREP AREA OR SURFACE FOR NEW WORK |
| X01 | (E) DOOR, HARDWARE AND FRAME TO REMAIN |

KEYNOTES

- DEMOLITION DRAWINGS PREPARED BY THE ARCHITECT ARE FOR A GENERAL DESCRIPTION OF EXISTING BUILDING COMPONENTS, ASSEMBLIES AND MATERIALS TO BE REMOVED. DEMOLITION CONTRACTOR IS RESPONSIBLE FOR VERIFYING ALL EXISTING CONDITION AND QUANTITIES.
- DEMOLITION CONTRACTOR IS RESPONSIBLE FOR PROVIDING NECESSARY PERMITS REQUIRED BY FEDERAL, STATE AND LOCAL MUNICIPAL AGENCIES HAVING JURISDICTIONAL AUTHORITY OVER ANY ASPECT OF THE DEMOLITION SCOPE.
- CONTRACTOR TO VERIFY ALL EXISTING CONDITIONS PRIOR TO DEMOLITION WORK.
- DEMOLITION CONTRACTOR IS RESPONSIBLE FOR REMOVAL AND DISPOSAL OF ALL DEMOLISHED MATERIALS IN A MANNER COMPLIANT TO FEDERAL, STATE AND LOCAL MUNICIPAL REQUIREMENTS AND GUIDELINES.
- DEMOLITION CONTRACTOR SHALL COORDINATE ALL WORK SCHEDULES WITH OWNER. IN NO CASE SHALL DEMOLITION WORK BE CONDUCTED DURING HOURS PROHIBITED BY LOCAL MUNICIPALITY.
- PLANS ARE BASED ON EXISTING RECORD DRAWINGS AND VISUAL OBSERVATION. UNIDENTIFIED ITEMS SHALL BE BROUGHT TO THE ATTENTION OF THE OWNERS REPRESENTATIVE PRIOR TO REMOVAL.
- CONTACT OWNER'S REPRESENTATIVE FOR LIST OF SALVAGEABLE ITEMS.
- CEILING FINISH, LIGHT FIXTURES, FIRE SPRINKLERS AND FIRE ALARM SYSTEM TO REMAIN
- REMOVE EXISTING WALL FINISHES (CERAMIC TILE, VINYL WALL COVERING, PLYWOOD, GYPSUM BOARD SUBSTRATES, PLASTER, WAINSCOTTING, ETC.) IN ALL ROOMS DESIGNATED TO RECEIVE NEW WALL FINISHES PER INTERIOR FINISH SCHEDULE.
- REMOVE EXISTING FLOORING & BASE (CERAMIC TILE, CARPET, PADDING AND ACCESSORIES) IN ALL ROOMS DESIGNATED TO RECEIVE NEW FLOORING AND BASE PER INTERIOR FINISH PLANS.
- REPAIR ALL SURFACES DESIGNATED TO RECEIVE NEW FLOOR, WALL, AND CEILING FINISHES AS REQUIRED TO PROVIDE A SOUND AND FLUSH SUBSTRATE.
- ALSO REFERENCE PLUMBING AND ELECTRICAL DEMOLITION DRAWINGS FOR ADDITIONAL COORDINATION OF ITEMS TO BE REMOVED OR PROTECTED IN PLACE.
- REMOVE ALL WALL AND PARTITION MOUNTED ACCESSORIES (TOILET PAPER DISPENSER, SEAT COVER DISPENSER, SANITARY NAPKIN DISPOSAL, SANITARY NAPKIN DISPENSER, SOAP DISPENSER, PAPER TOWEL DISPENSER, MIRROR, GRAB BARS, SHELVES, ETC.).
- SALVAGE SIGNAGE FOR REINSTALLATION AS REQ'D TO PAINT DOORS
- REMOVE (E) PLUMBING FIXTURES WITHIN THE AREA OF WORK, INCLUDING FLOOR DRAINS AND HOSE BIBBS. FOR MORE INFORMATION, SEE PLUMBING DRAWINGS.
- NO DEMOLITION SHALL BEGIN UNTIL PLANS, INCLUDING THE DEMOLITION WORK, HAVE BEEN APPROVED BY DSA.

DEMOLITION NOTES

- | | |
|--|--|
| | EXISTING WOOD STUD WALL |
| | EXISTING DOOR/FRAME/HW TO BE REMOVED |
| | SAWCUT AND REMOVE PORTION OF (E) CONCRETE SLAB (INCLUDING CONCRETE CURBS FOR WALLS TO BE DEMOLISHED) |
| | EXISTING ITEM & EQUIPMENT TO BE DEMOLISHED |
| | AREA NOT IN SCOPE OF WORK |

OWNER: LODI UNIFIED SCHOOL DISTRICT

PROJECT NAME: BEAR CREEK HIGH SCHOOL RESTROOMS MODERNIZATION

CLIENT ADDRESS: 10555 THORNTON ROAD, STOCKTON, CA 95209

REVISIONS:

	DESCRIPTION	DATE
1	Addendum 1	10/26/2023

PROJECT NO: Project Number

DATE ISSUED: Issue Date

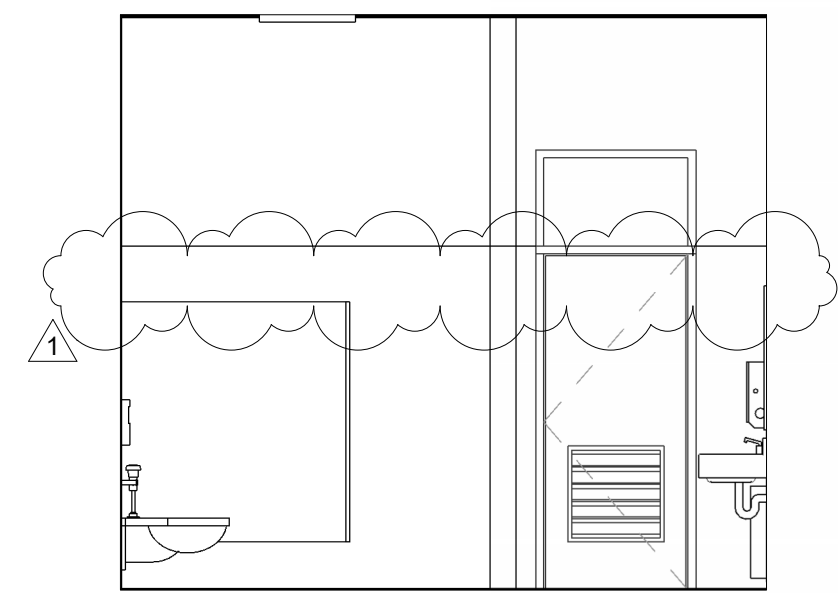
SCALE: As indicated

A11.1

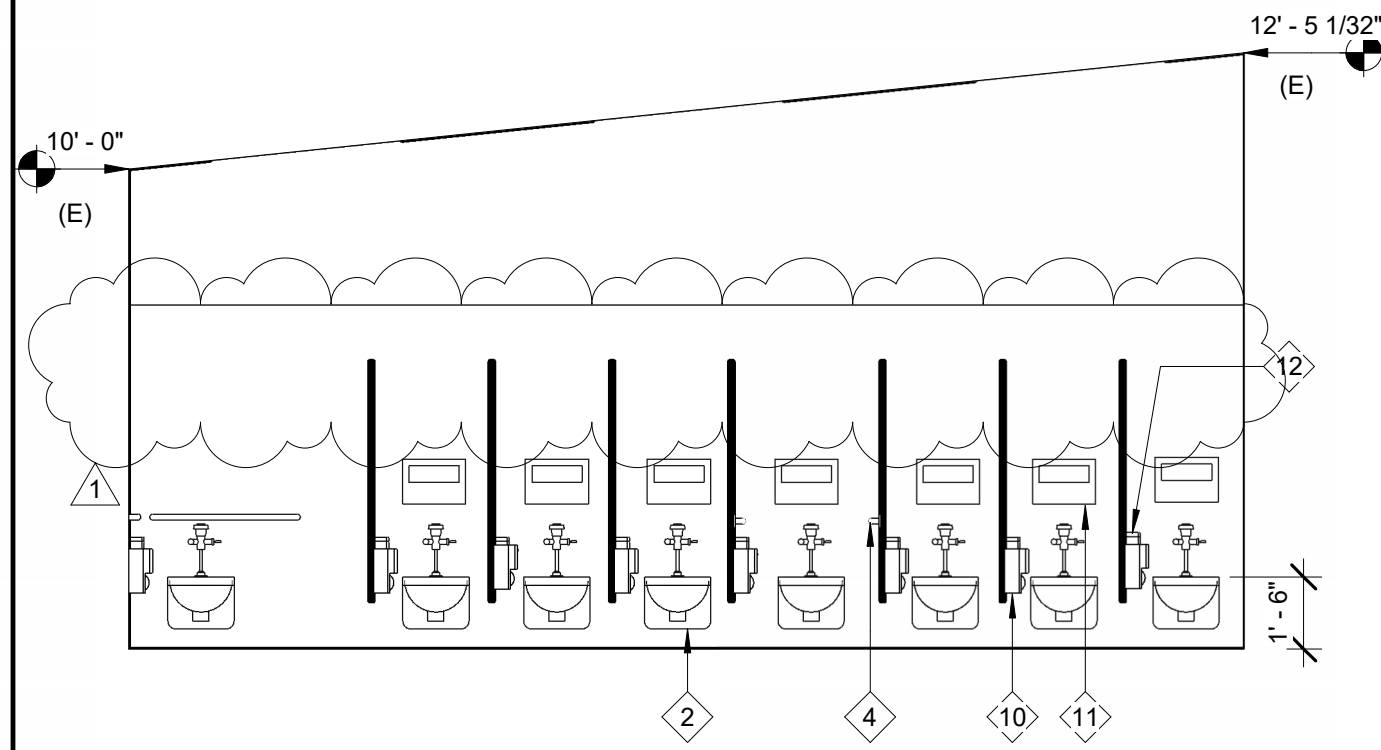
DEMO FLOOR PLAN



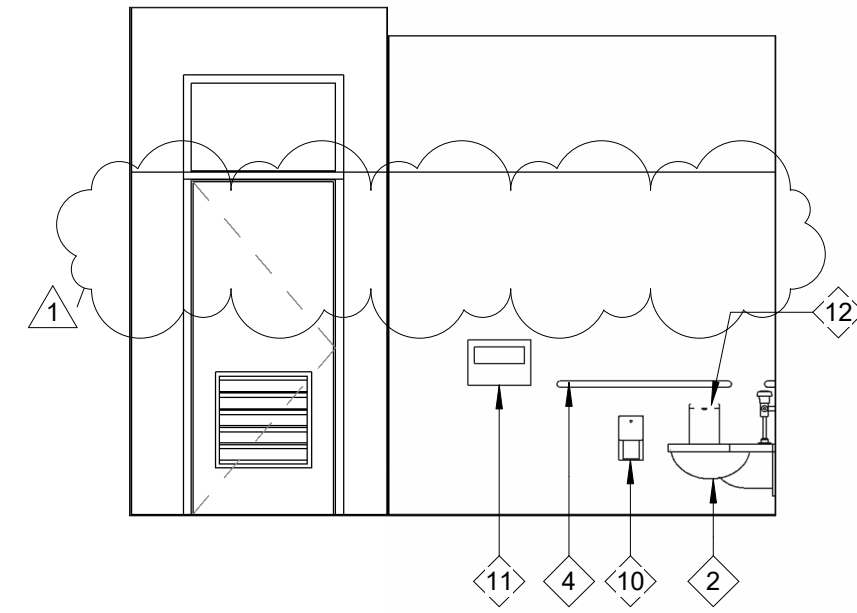
THIS DOCUMENT CONTAINS INFORMATION PROPRIETARY TO SVA ARCHITECTS INC. AND IS FURNISHED IN CONFIDENCE FOR THE LIMITED PURPOSE OF EVALUATION, REVIEW OR REVISION. THIS DOCUMENT OR ITS CONTENTS MAY NOT BE USED FOR ANY OTHER PURPOSE AND MAY NOT BE REPRODUCED OR DISCLOSED TO OTHERS WITHOUT THE PRIOR WRITTEN CONSENT OF SVA ARCHITECTS INC. ALL RIGHTS RESERVED. © COPYRIGHT 2018.



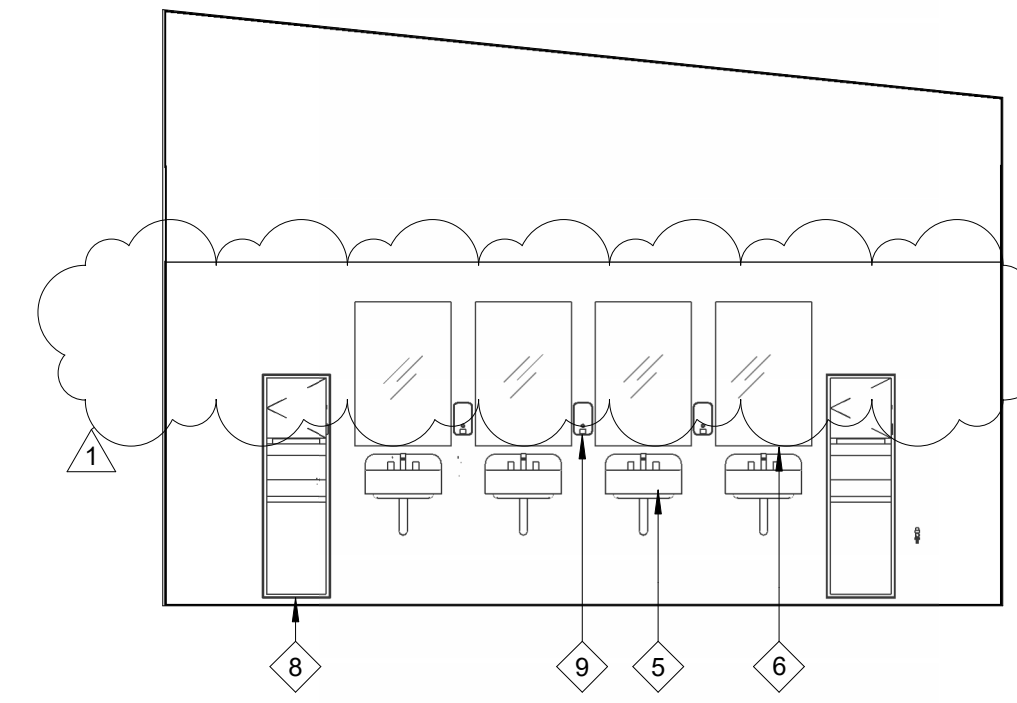
BUILDING G WOMEN'S RR INT ELEV - WEST



10	BUILDING G WOMEN'S RR INT ELEV -SOUTH
----	---------------------------------------



BUILDING G WOMEN'S RR INT ELEV - EAST



BLDNG G WOMEN'S RR INT ELEV - NORTH

- | FIXTURE | |
|---------|--|
| 1 | FLOOR-MOUNTED, OVERHEAD BRACED SOLID PLASTIC PARTITIONS-SEE SPECS |
| 2 | WALL-MOUNTED WATER CLOSET (KOHLER KINGSTON K-4325)
- FLUSH VALVE (SLOAN ROYAL 111 ESS) |
| 3 | WALL-MOUNTED URINAL (KOHLER K-4904-ET)
- FLUSH VALVE (SLOAN ROYAL 106 ESS) |
| 4 | GRAB BARS FOR ACCESSIBLE TOILET (1-1/2" DIA. STAINLESS STEEL):
42" LENGTH @ SIDE WALL (BORBRICK B-5806X24)
36" LENGTH @ REAR WALL (BORBRICK B-5806X36) |
| 5 | WALL-MOUNTED SINK (KOHLER K-2005)
- FAUCET (MOEN COMMERCIAL MODEL 8884) |
| 6 | FRAMED MIRROR (BORBRICK B-165 2436) |
| 7 | PAPER TOWEL DISPENSER (TORK 5417R) |
| 8 | RECESSED CONVERTIBLE PAPER TOWEL DISPENSER AND WASTE RECEPTACLE
(BORBRICK B-3961) |
| 9 | SURFACE MOUNTED LIQUID SOAP DISPENSER (SC JOHNSON TPB1LDS) |
| 10 | TOILET PAPER DISPENSER (BORBRICK B-2888) |
| 11 | TOILET SEAT COVER DISPENSER (BORBRICK B-221) |
| 12 | SURFACE-MOUNTED SANITARY NAPKIN DISPOSAL (BORBRICK B-270) |

NOTES:

1. REFER SHEET GEN-4 FOR MOUNTING HEIGHTS AND LOCATIONS FOR ALL ACCESSIBLE RESTROOM ACCESSORIES AND FIXTURES.
2. FOR ADDITIONAL INFORMATION ON PLUMBING FIXTURES, SEE PLUMBING DRAWINGS

RESTROOM ACCESSORY LEGEND

?	DESCRIPTION	A
033000.A	PATCH CONCRETE SLAB WITH CEMENTITIOUS REPAIR COMPOUND, PROVIDE LEVEL BROOM FINISH TO MATCH EXISTING.	
033000.J	PATCH WALL AT REMOVED DRINKING FOUNTAIN. FINISH TO MATCH EXISTING	
084100.A	PROVIDE (N) ACCESSIBLE ALUMINUM THRESHOLD, SEE SPECS.	
092116.A	GYPSUM BOARD WALL FINISH (PAINTED), SEE FINISH SCHEDULE	
092116.B	REPAINT (E) GYP CEILING. SEE FINISH SHCHEDULE	
092116.C	GYPSUM BOARD FINISH WITH WAINSCOT OVER (E) FRAMING, TYP. FOR ALL INTERIOR PARTITIONS WITHIN AREA OF WORK, SEE DETAIL 1/A50.1	
099000.D	EPOXY WAINSCOT WITH INTERAL BASE	A
101400.A	PROVIDE SIGN WHERE MISSING, SEE SHEET GEN-5 FOR INSTALLATION CRITERIA	
102113.A	TOILET COMPARTMENT, SEE SPECS. TYP.	
102800.T	(N) DRINKING FOUNTAIN GRAB BAR FOR, FOR DETAIL, SEE 3/GEN-4; FOR ACCESSIBILITY INFORMATION, SEE 5/GEN-4	
221000.A	(N) HI-LO ACCESSIBLE DRINKING FOUNTAIN WITH BOTTLE FILLER, SEE PLUMBING DRAWINGS, DETAIL 5/GEN-4 FOR ACCESSIBILITY INFORMATION, AND DETAIL 3/A50.1 FOR BACKING	
221000.D	NEW WATER CLOSET AT EXISTING PIPES WHERE POSSIBLE, MUST MAINTAIN ACCESSIBILITY REQUIREMENTS, SEE 2/ GEN-4 AND PLUMBING DRAWINGS	
221000.F	NEW URINAL INSTALL AT EXISTING PIPES WHERE POSSIBLE, MUST MAINTAIN ACCESSIBILITY REQUIREMENTS, SEE 2/ GEN-4 AND PLUMBING DRAWINGS	
221000.G	NEW LAVATORY WITH PIPE INSULATION, SEE 2/ GEN-4 AND PLUMBING DRAWINGS	
X02	(E) DRINKING FOUNTAIN GUARDRAIL TO REMAIN	

KEYNOTE

30"x48"
CLR.

30"x48" MIN. ACCESSIBLE WHEELCHAIR
CLEAR FLOOR SPACE

60" MIN.
CLR.

60" MIN. ACCESSIBLE WHEELCHAIR
CLEAR TURNING SPACE

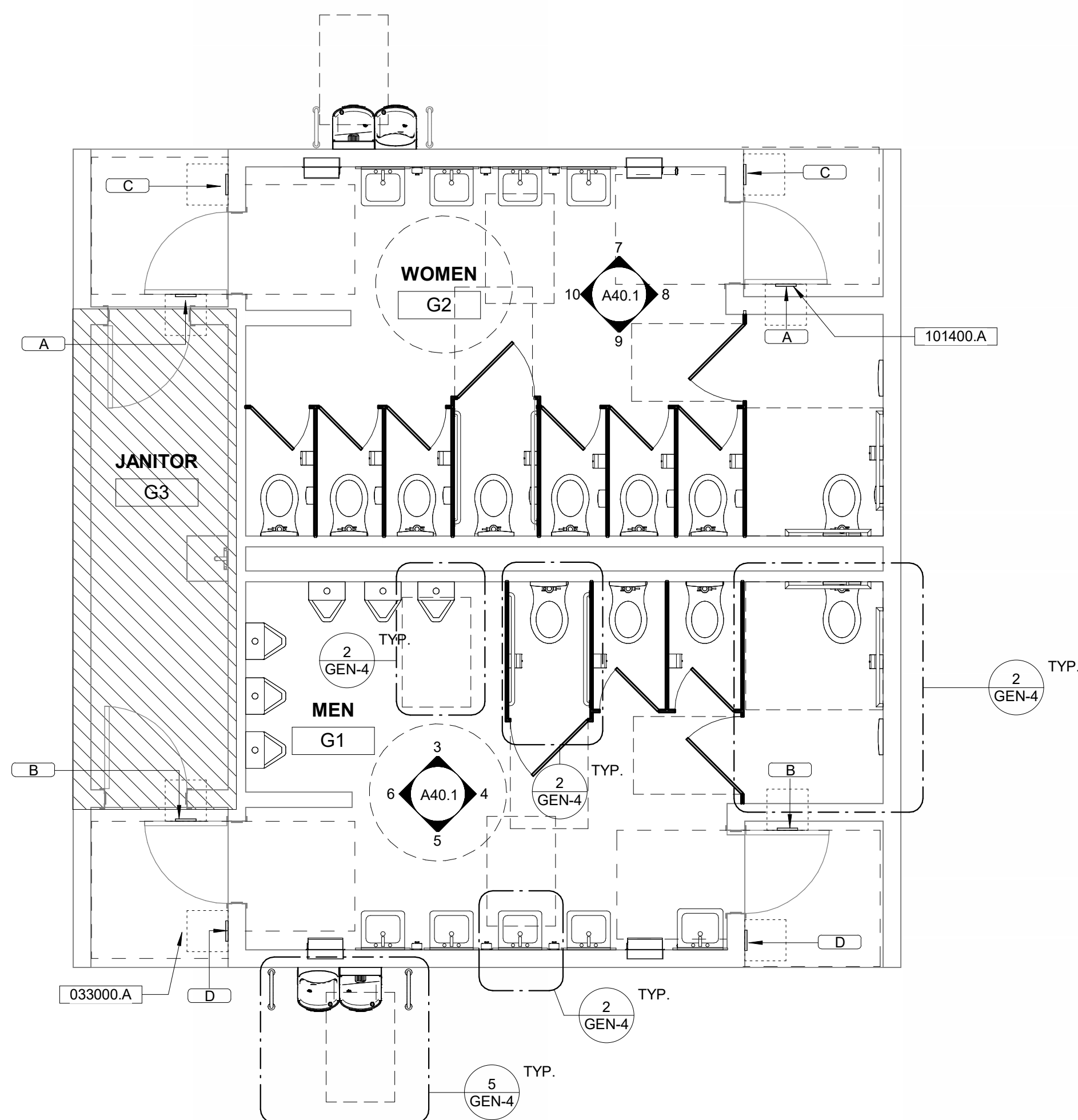
EXISTING WOOD STUD WALL

TYPE SIGN FOR SIGNAGE SCHEDULE AND DETAILS, SEE SHEET GEN-5

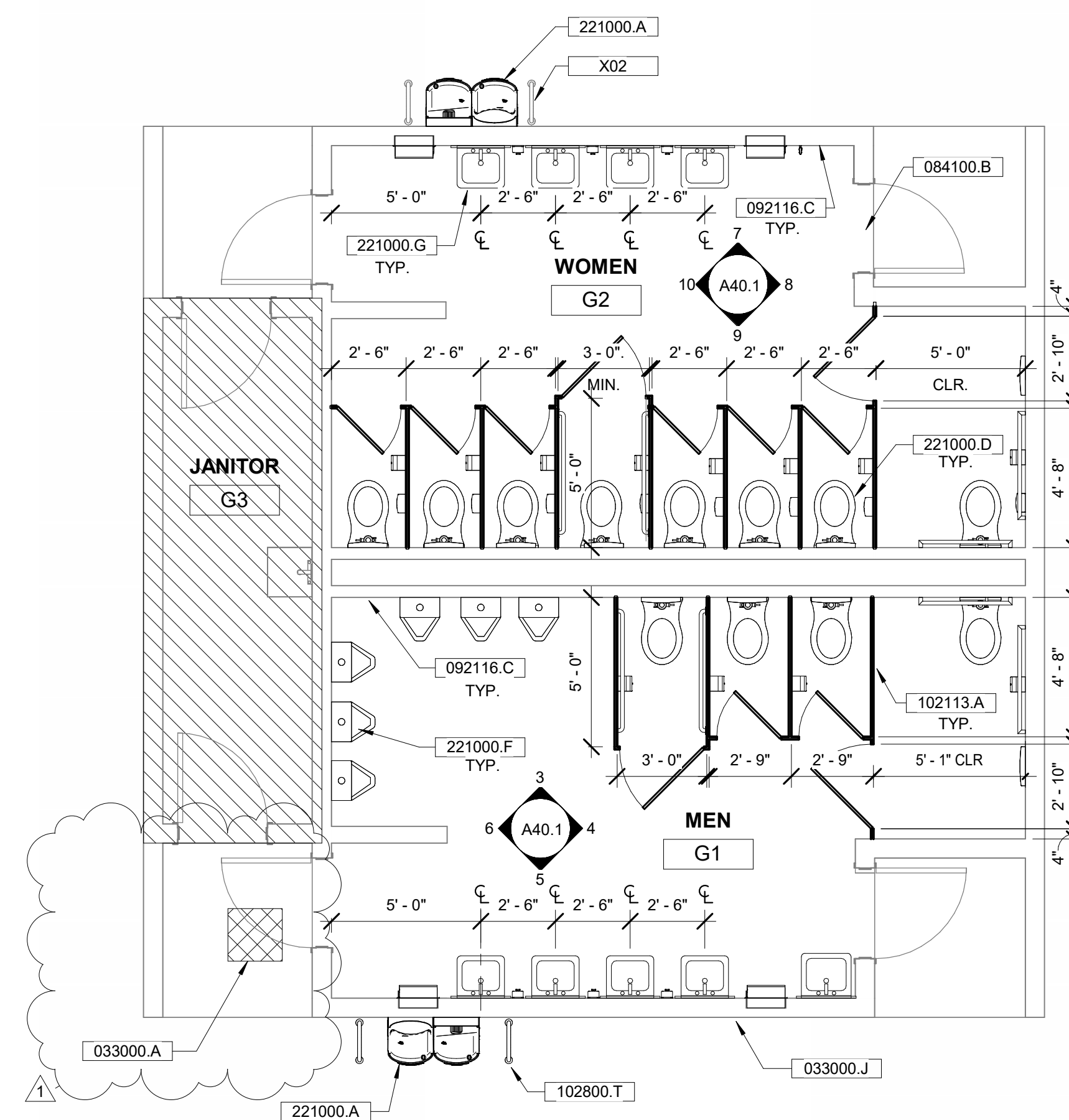
AREA OUTSIDE OF SCOPE OF WORK

FLOOR PLAN GENERAL NOTES:

- FLOOR PLAN GENERAL NOTES:**
1. ALL DIMENSIONS ARE TO CENTERLINE OF THE GRID LINES AND/OR TO THE FACE OF STUDS, U.N.O.
 2. UNLESS NOTED OTHERWISE, ALL WALLS ARE FULL HEIGHT.
 3. REFER TO SHEET GEN-4 FOR TYPICAL ACCESSIBILITY REQUIREMENTS AND DIMENSIONS.
 4. SLOPE (N) FLOORING TO FLOOR DRAINS, SEE PLUMBING DRAWINGS FOR MORE INFORMATION.
 5. FOR MORE INFORMATION, SEE PLUMBING DRAWINGS.
 6. RE-INSTALL (E) SIGNAGE AS REQ'D, SEE SHEET GEN-5 FOR SIGN INSTALLATION CRITERIA, PROVIDE (N) SIGNAGE WHERE MISSING
 7. PROVIDE (N) FLOOR DRAINS AT (E) LOCATIONS. FOR MORE INFORMATION, SEE PLUMBING DRAWINGS



BUILDING G - IMPROVEMENT FLOOR PLAN



BUILDING G - IMPROVEMENT FLOOR PLAN

FLOOR PLAN LEGEND

OWNER: LODI UNIFIED SCHOOL DISTRICT

**PROJECT NAME: BEAR CREEK HIGH SCHOOL
RESTROOMS MODERNIZATION**

CLIENT ADDRESS: 10555 THORNTON ROAD, STOCKTON, CA 95209

REVISIONS:

[illegible]

PROJECT NO: Project Number

DATE ISSUED: Issue Date

SCALE: As indicated

A40.1

**BUILDING G -
ENLARGED
PLANS &
INTERIOR
ELEVATIONS**



2335 BROADWAY #301 OAKLAND, CA 94612
T 510.267.3180 WWW.SVA-ARCHITECTS.COM

THIS DOCUMENT CONTAINS INFORMATION PROPRIETARY TO SVA ARCHITECTS, INC. AND IS FURNISHED IN CONFIDENCE FOR THE LIMITED PURPOSE OF EVALUATION, BIDDING OR REVIEW. THIS DOCUMENT OR ITS CONTENTS MAY NOT BE USED FOR ANY OTHER PURPOSE AND MAY NOT BE REPRODUCED OR DISCLOSED TO OTHERS WITHOUT THE PRIOR WRITTEN CONSENT OF SVA ARCHITECTS, INC. ALL RIGHTS RESERVED. © COPYRIGHT 2018.

- FIXTURE
- FLOOR-MOUNTED, OVERHEAD BRACED SOLID PLASTIC PARTITIONS-SEE SPECS
 - WALL-MOUNTED WATER CLOSET (KOHLER KINGSTON K-4325)
- FLUSH VALVE (SLOAN ROYAL 111 ESS)
 - WAL-MOUNTED URINAL (KOHLER K-4904-ET)
- FLUSH VALVE (SLOAN ROYAL 186 ESS)
 - GRAB BARS FOR ACCESSIBLE TOILET (1-1/2" DIA. STAINLESS STEEL):
42" LENGTH @ SIDE WALL (BOBRICK B-5806X42)
36" LENGTH @ REAR WALL (BOBRICK B-5806X36)
 - WALL-MOUNTED SINK (KOHLER K-2005)
- FAUCET (MOEN COMMERCIAL MODEL 8884)
 - FRAMED MIRROR (BOBRICK B-165 2436)
 - PAPER TOWEL DISPENSER (TORK-D47R)
 - RECESSED CONVERTIBLE PAPER TOWEL DISPENSER AND WASTE RECEPTACLE (BOBRICK B-3961)
 - SURFACE MOUNTED LIQUID SOAP DISPENSER (SC. JOHNSON TPB1LDS)
 - TOILET PAPER DISPENSER (BOBRICK B-2888)
 - TOILET SEAT COVER DISPENSER (BOBRICK B-221)
 - SURFACE-MOUNTED SANITARY NAPKIN DISPOSAL (BOBRICK B-270)

- NOTES
- REFER SHEET GEN-4 FOR MOUNTING HEIGHTS AND LOCATIONS FOR ALL ACCESSIBLE RESTROOM ACCESSORIES AND FIXTURES.
 - FOR ADDITIONAL INFORMATION ON PLUMBING FIXTURES, SEE PLUMBING DRAWINGS

RESTROOM ACCESSORY LEGEND

- | ? | DESCRIPTION |
|----------|--|
| 033000.J | PATCH WALL AT REMOVED DRINKING FOUNTAIN. FINISH TO MATCH EXISTING |
| 092116.A | GYPSUM BOARD WALL FINISH (PAINTED), SEE FINISH SCHEDULE |
| 092116.B | REPAINT (E) GYP CEILING, SEE FINISH SHCHEDULE |
| 096723.B | (N) EPOXY WAINSCOT, SEE FINISH SCHEDULE AND DETAIL 1/A50.1 |
| 101400.A | PROVIDE SIGN WHERE MISSING, SEE SHEET GEN-5 FOR INSTALLATION CRITERIA |
| 102113.A | TOILET COMPARTMENT, SEE SPECS. TYP. |
| 102800.T | (N) DRINKING FOUNTAIN GRAB BAR; FOR DETAIL, SEE 3/GEN-4; FOR ACCESSIBILITY INFORMATION, SEE 5/GEN-4 |
| 221000.A | (N) HI-LO ACCESSIBLE DRINKING FOUNTAIN WITH BOTTLE FILLER, SEE PLUMBING DRAWINGS, DETAIL 5/GEN-4 FOR ACCESSIBILITY INFORMATION, AND DETAIL 3/A50.1 FOR BACKING |
| 221000.B | (N) HOSE BIBB AT (E) LOCATION. SEE PLUMBING DRAWINGS |
| 221000.D | NEW WATER CLOSET AT EXISTING PIPES WHERE POSSIBLE, MUST MAINTAIN ACCESSIBILITY REQUIREMENTS, SEE 2/ GEN-4 AND PLUMBING DRAWINGS |
| 221000.F | NEW URINAL INSTALL. AT EXISTING PIPES WHERE POSSIBLE, MUST MAINTAIN ACCESSIBILITY REQUIREMENTS, SEE 2/ GEN-4 AND PLUMBING DRAWINGS |
| 221000.G | NEW LAVATORY WITH PIPE INSULATION, SEE 2/ GEN-4 AND PLUMBING DRAWINGS |
| X02 | (E) DRINKING FOUNTAIN GUARDRAIL TO REMAIN |

KEYNOTE

- | | |
|--|---|
| | 30"x48" MIN. ACCESSIBLE WHEELCHAIR CLEAR FLOOR SPACE |
| | 60" MIN. ACCESSIBLE WHEELCHAIR CLEAR TURNING SPACE |
| | EXISTING WOOD STUD WALL |
| | SIGN TYPE - FOR SIGNAGE SCHEDULE AND DETAILS, SEE SHEET GEN-5 |
| | AREA OUTSIDE OF SCOPE OF WORK |

- FLOOR PLAN GENERAL NOTES:
- ALL DIMENSIONS ARE TO CENTERLINE OF THE GRID LINES AND/OR TO THE FACE OF STUDS, U.N.O.
 - UNLESS NOTED OTHERWISE, ALL WALLS ARE FULL HEIGHT.
 - REFER TO SHEET GEN-4 FOR TYPICAL ACCESSIBILITY REQUIREMENTS AND DIMENSIONS.
 - SLOPE (N) FLOORING TO FLOOR DRAINS, SEE PLUMBING DRAWINGS FOR MORE INFORMATION.
 - FOR MORE INFORMATION, SEE PLUMBING DRAWINGS.
 - RE-INSTALL (E) SIGNAGE AS REQ'D, SEE SHEET GEN-5 FOR SIGN INSTALLATION CRITERIA, PROVIDE (N) SIGNAGE WHERE MISSING
 - PROVIDE (N) FLOOR DRAINS AT (E) LOCATIONS. FOR MORE INFORMATION, SEE PLUMBING DRAWINGS

REVISIONS:

	DESCRIPTION	DATE
1	Addendum 1	10/26/2023

PROJECT NO: Project Number

DATE ISSUED: Issue Date

SCALE: As indicated

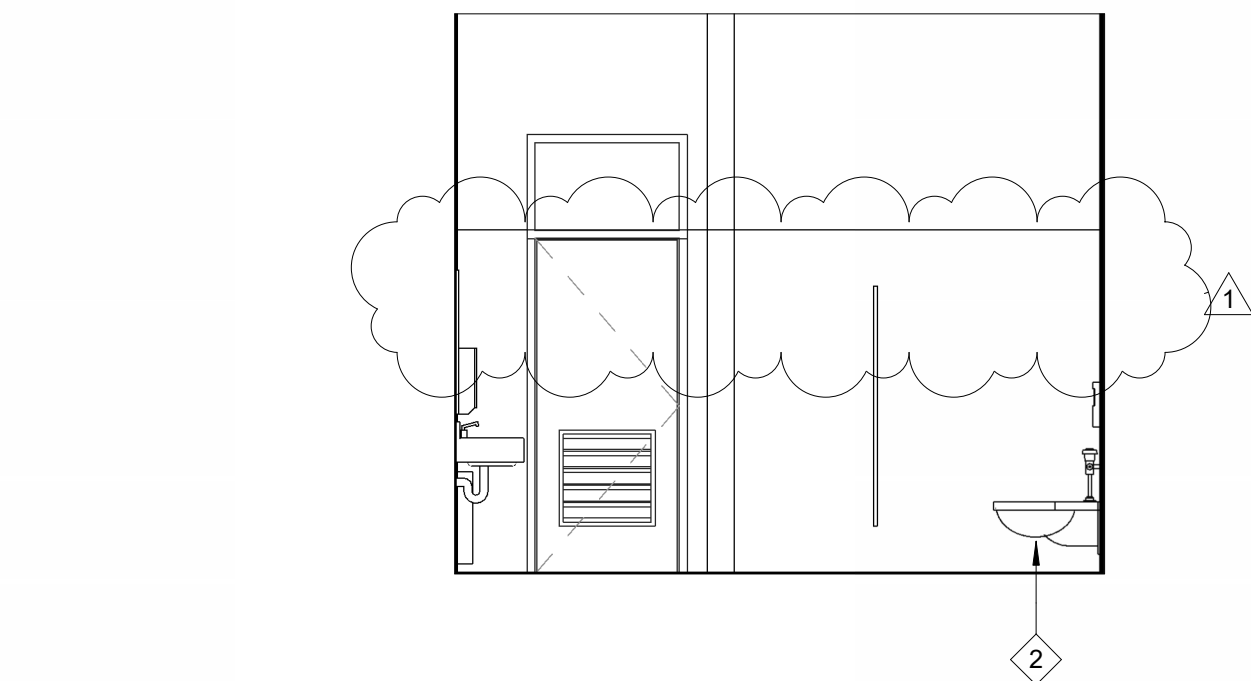
A40.2

BUILDING J - ENLARGED PLANS & INTERIOR ELEVATIONS



2335 BROADWAY #301 OAKLAND, CA 94612
T 510.287.3180 WWW.SVAARCHITECTS.COM

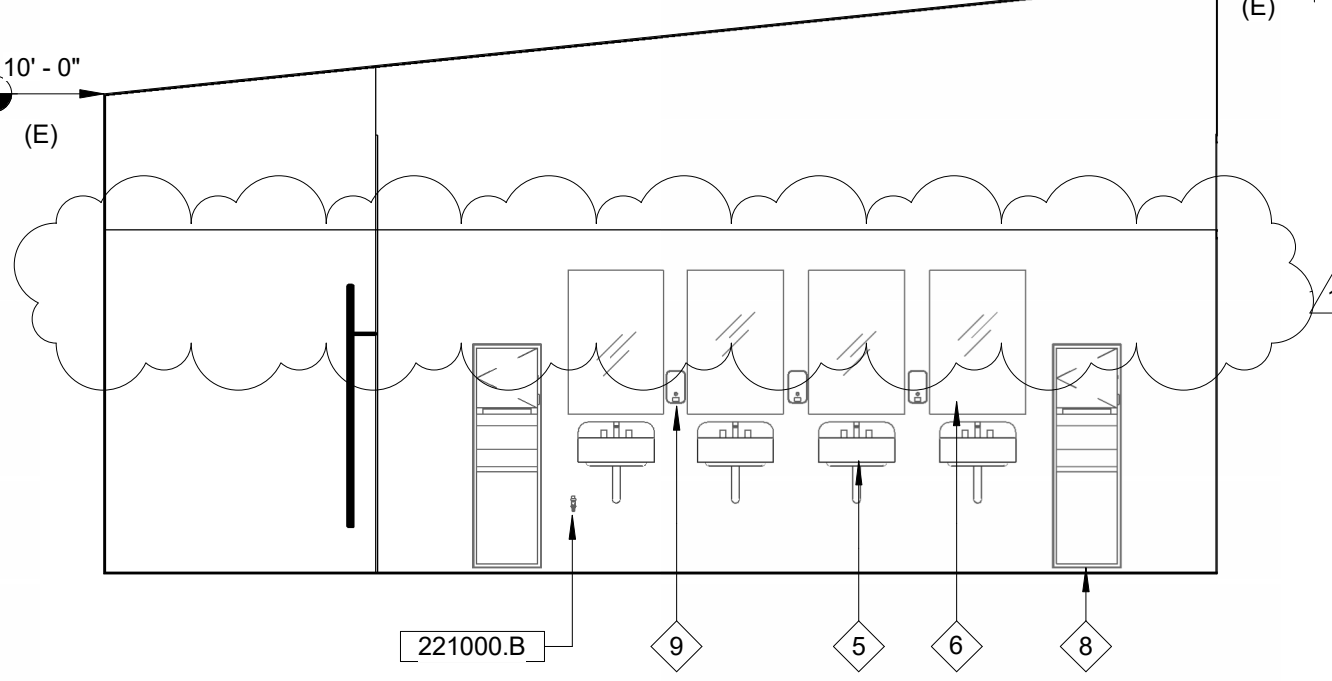
THIS DOCUMENT CONTAINS INFORMATION PROPRIETARY TO SVA ARCHITECTS INC. AND IS FURNISHED IN CONFIDENCE FOR THE LIMITED PURPOSE OF EVALUATION, REVIEW, OR REVISION. THIS DOCUMENT OR ITS CONTENTS MAY NOT BE USED FOR ANY OTHER PURPOSE AND MAY NOT BE REPRODUCED OR DISCLOSED TO OTHERS WITHOUT THE PRIOR WRITTEN CONSENT OF SVA ARCHITECTS INC. ALL RIGHTS RESERVED. © COPYRIGHT 2018.



BUILDING J WOMEN'S RR INT ELEV - WEST

1/4" = 1'-0"

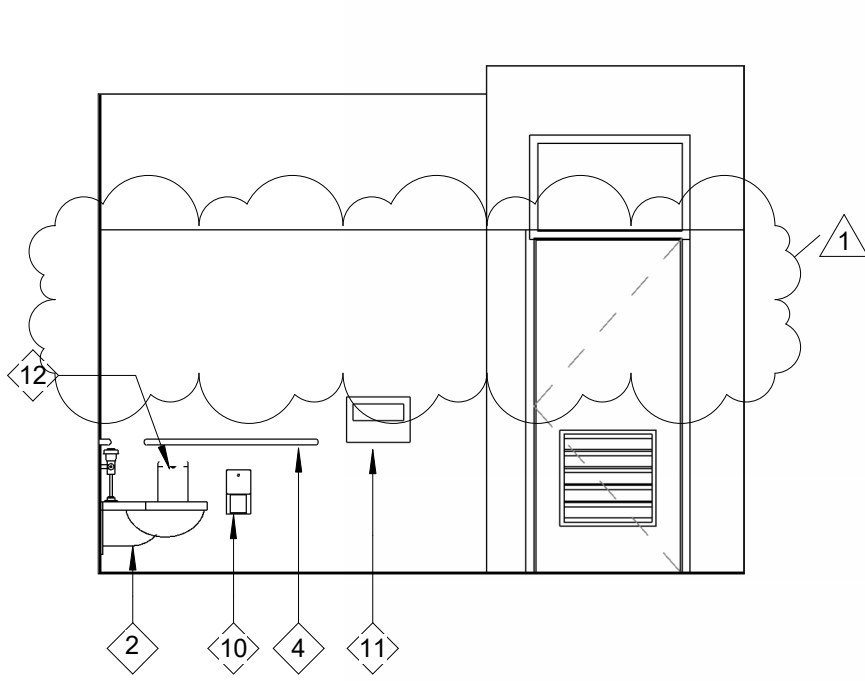
10



BUILDING J WOMEN'S RR INT ELEV - SOUTH

1/4" = 1'-0"

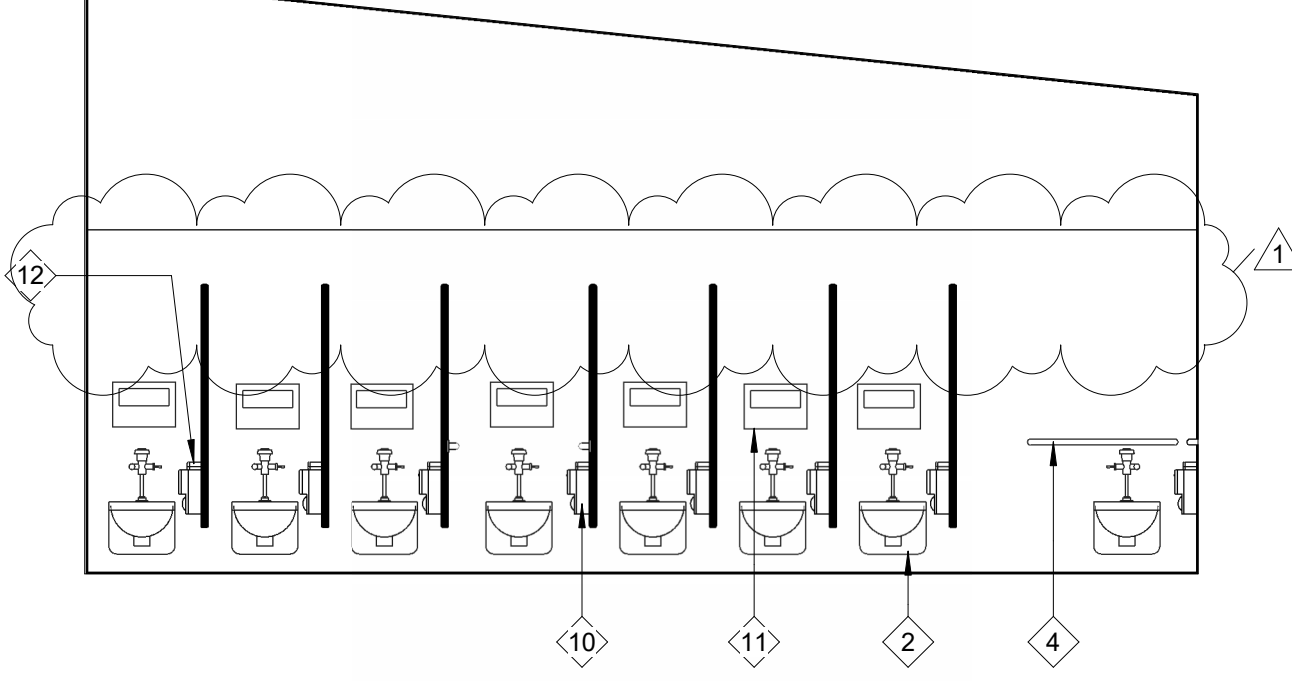
9



BUILDING J WOMEN'S RR INT ELEV - EAST

1/4" = 1'-0"

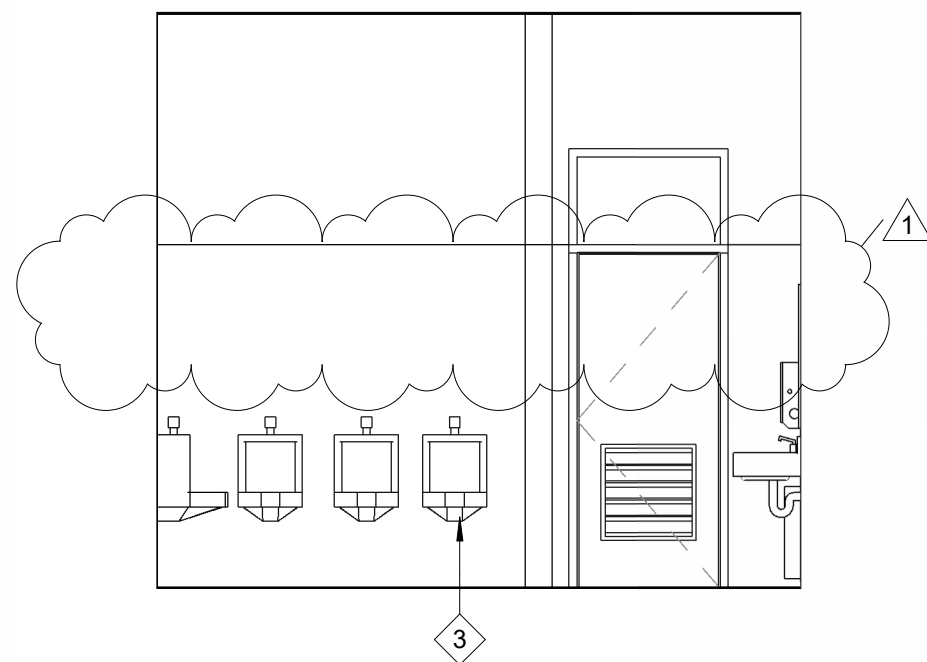
8



BUILDING J WOMEN'S RR INT ELEV - NORTH

1/4" = 1'-0"

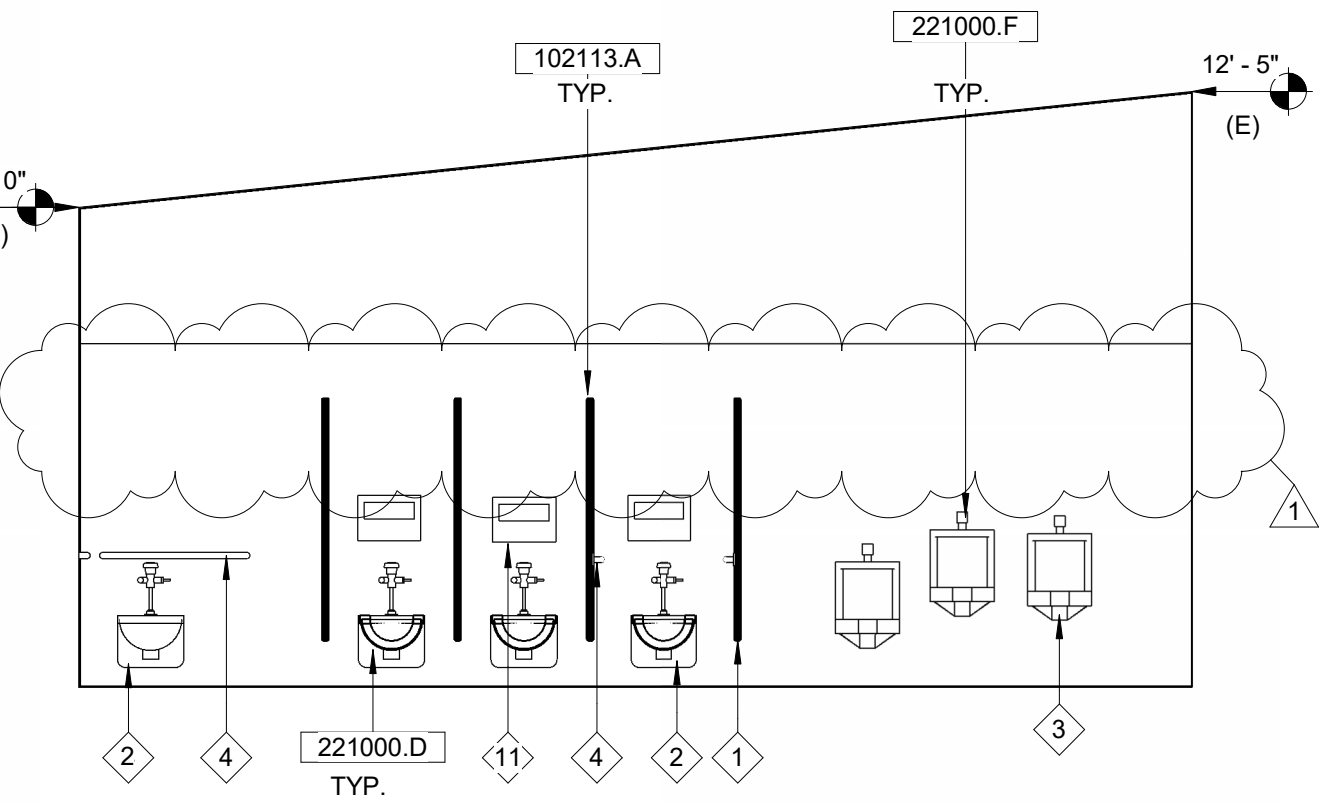
7



BUILDING J MEN'S RR INT ELEV - WEST

1/4" = 1'-0"

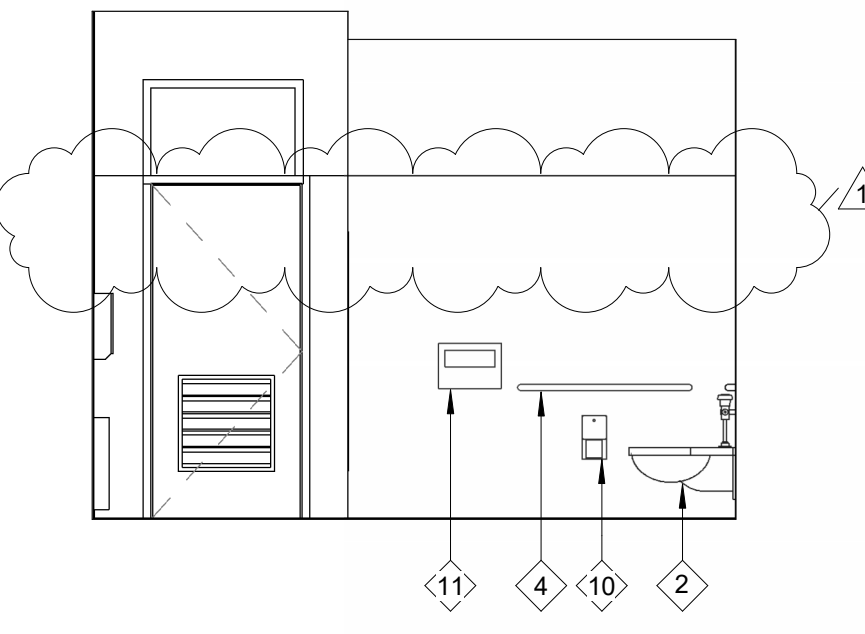
6



BUILDING J MEN'S RR INT ELEV - SOUTH

1/4" = 1'-0"

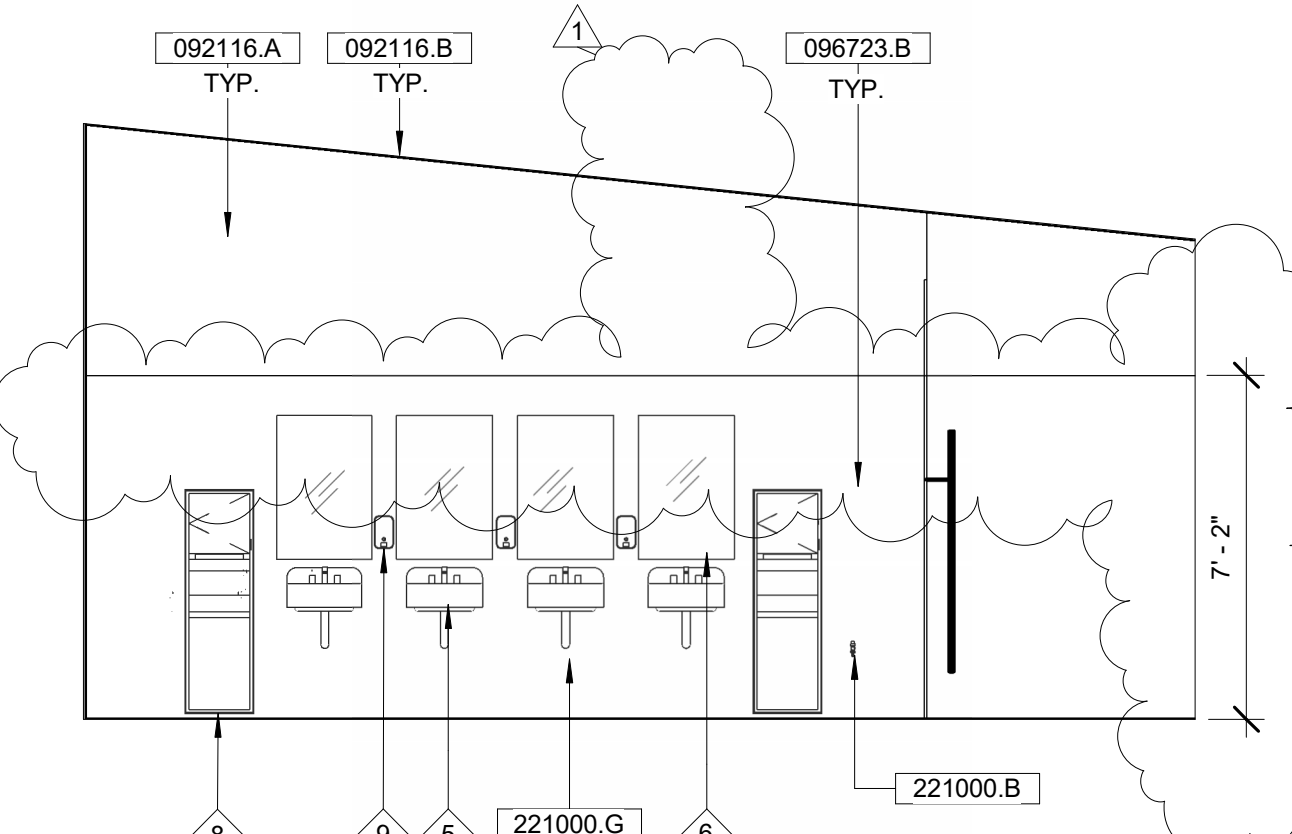
5



BUILDING J MEN'S RR INT ELEV - EAST

1/4" = 1'-0"

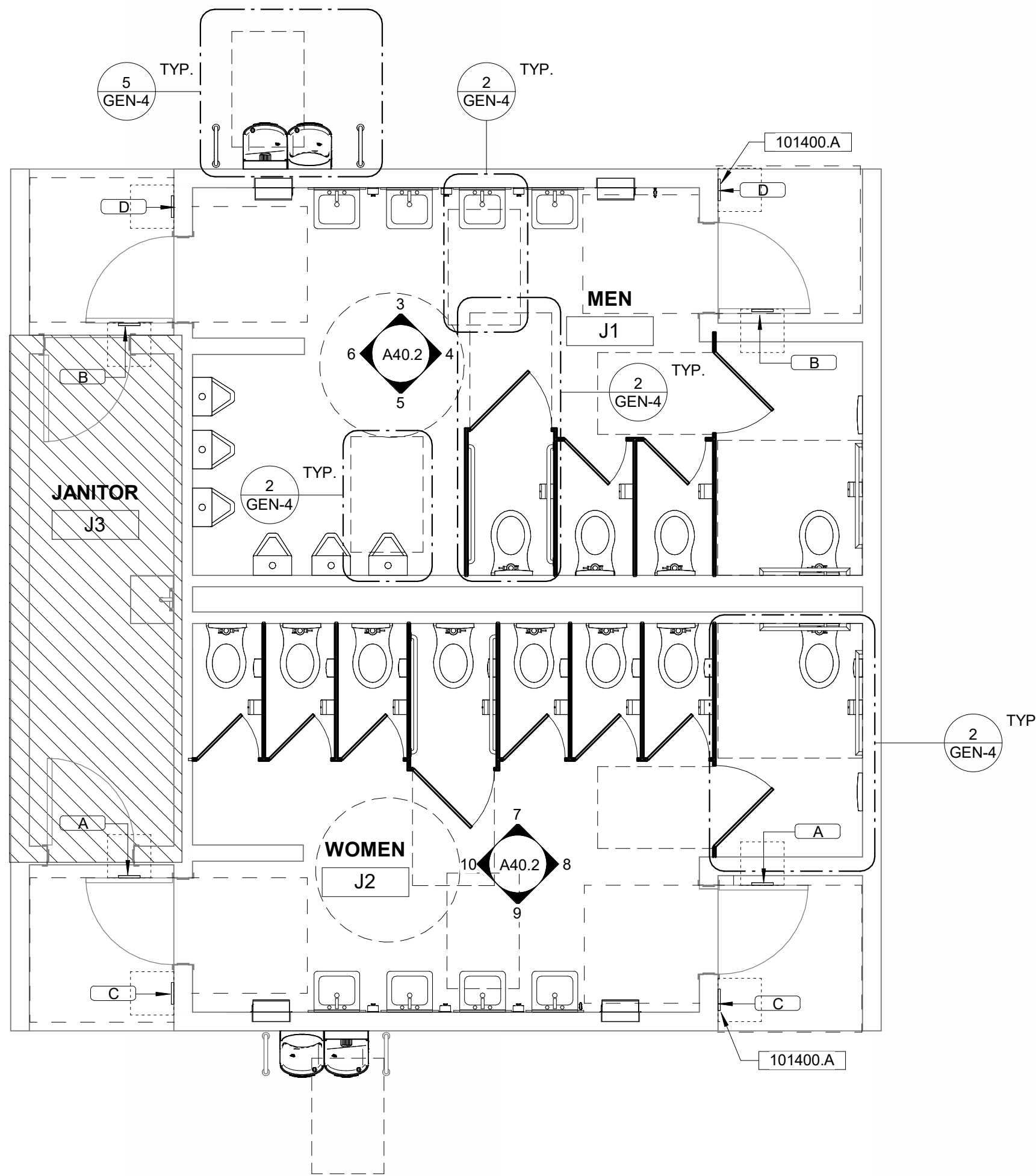
4



BUILDING J MEN'S RR INT ELEV - NORTH

1/4" = 1'-0"

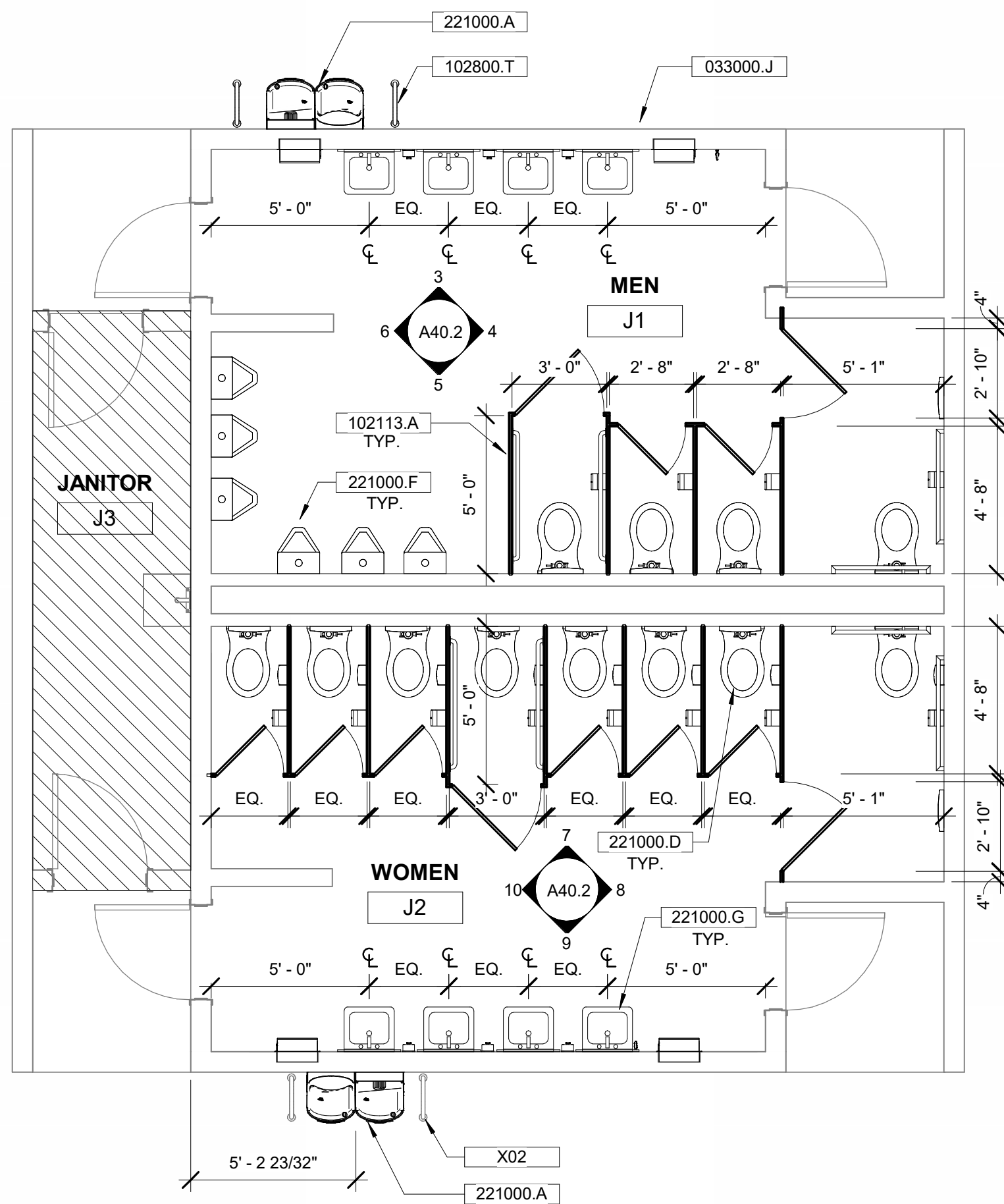
3



BUILDING J -ACCESSIBILITY AND SIGNAGE

1/4" = 1'-0"

2



BUILDING J - IMPROVEMENT FLOOR PLAN

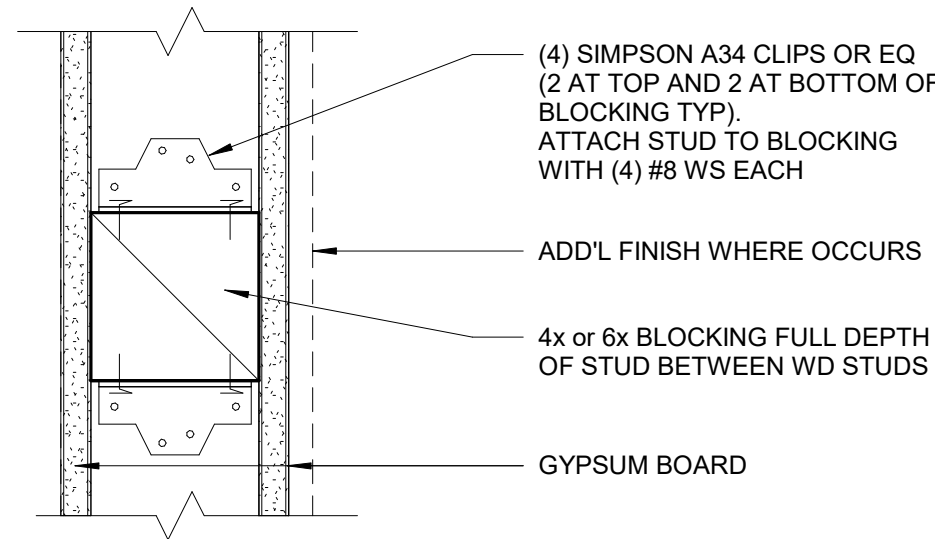
1/4" = 1'-0"

1

FLOOR PLAN LEGEND

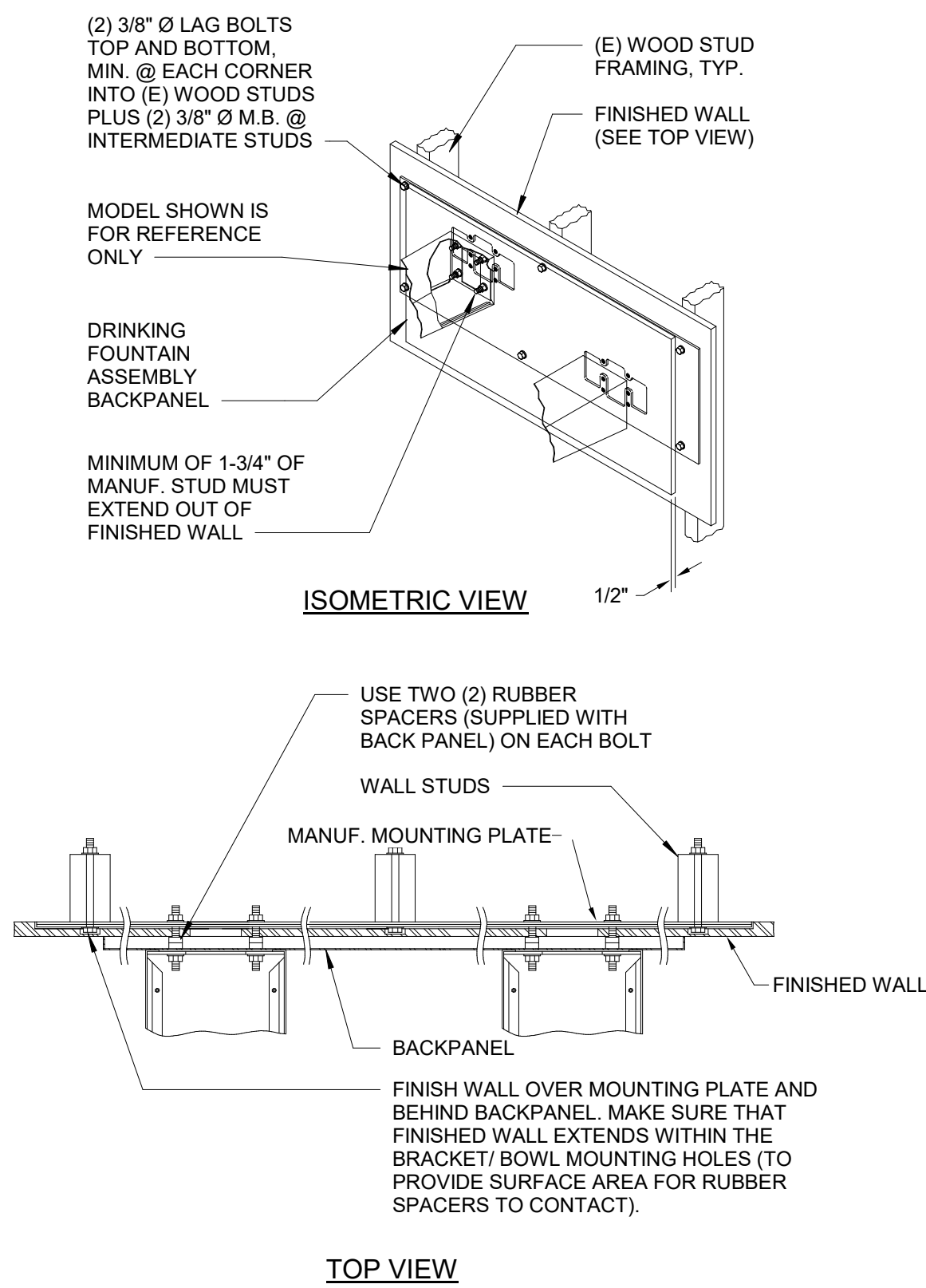
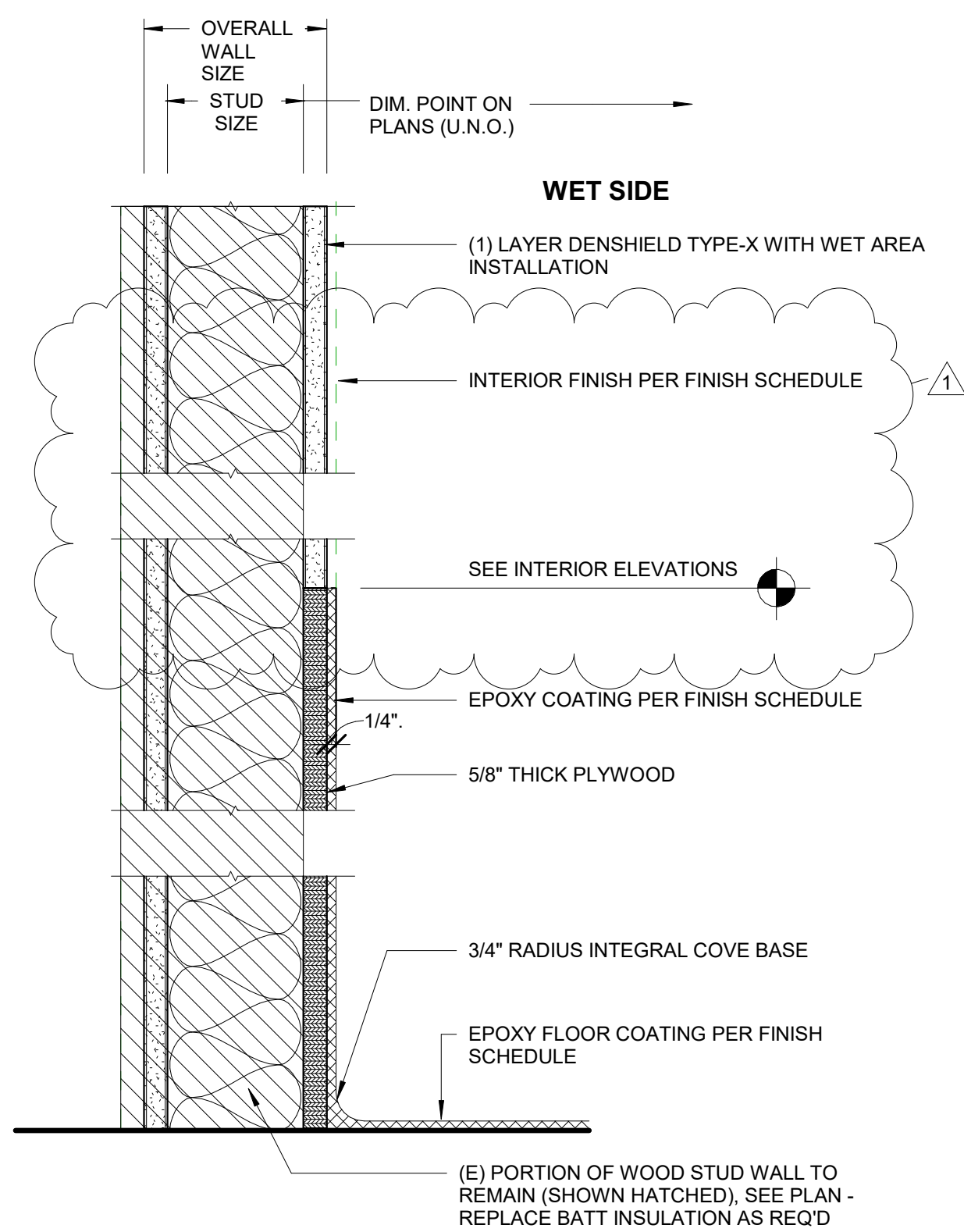
Diagram of an (E) Louver Door. The diagram shows a rectangular door with a louvered section at the bottom. Callouts indicate the following details:

- WIDTH PER SCHED.
- HEIGHT PER SCHEDULE
- RESTROOM DOOR SIGN, SEE SHEET GEN-5
- PROVIDE ACCESSIBLE ENTRY DECAL AT POWER OPERATED DOORS, SEE 10 GEN-5
- (E) DOOR LOUVER
- 1'-0"
- 3"
- L** (E) LOUVER DOOR



USE: GRAB BARS OR WALL-MOUNTED EQUIPMENT

FINISH SCHEDULE									
#	NAME	FLOOR	BASE	WALL		CEILING		COMMENTS	
				MATERIAL	FINISH	MATERIAL	FINISH		
G1	MEN	EPY	EPY	(N) GYP	PT	(E) GYP	PT	PATCH DAMAGED AREA. MATERIAL & FINISH TO MATCH (E)	
G2	WOMEN	EPY	EPY	(N) GYP	PT	(E) GYP	PT	PATCH DAMAGED AREA. MATERIAL & FINISH TO MATCH (E)	
J1	MEN	EPY	EPY	(N) GYP	PT	(E) GYP	PT	PATCH DAMAGED AREA. MATERIAL & FINISH TO MATCH (E)	
J2	WOMEN	EPY	EPY	(N) GYP	PT	(E) GYP	PT	PATCH DAMAGED AREA. MATERIAL & FINISH TO MATCH (E)	
Q5	MEN	EPY	EPY	(N) GYP	PT	(E) GYP	PT	PATCH DAMAGED AREA. MATERIAL & FINISH TO MATCH (E)	
Q7	WOMEN	EPY	EPY	(N) GYP	PT	(E) GYP	PT	PATCH DAMAGED AREA. MATERIAL & FINISH TO MATCH (E)	



FLOORS

EPY EPOXY FOOR COATING
DUR-A-FLEX, INC. | DUR-A-QUARTZ | COLOR T.B.D., OR EQUAL

WAINSCOT

EPY EPOXY FLOOR COATING
DUR-A-FLEX, INC. | DUR-A-QUARTZ | COLOR T.B.D., OR EQUAL

WALLS

PT INTERIOR DRYWALL PAINT - EGGSHELL/ FLAT
SHERWIN-WILLIAMS | PROMAR 200 ZERO VOC | B30W02651, OR EQUAL

CEILING

PT INTERIOR DRYWALL PAINT - EGGSHELL/ FLAT
SHERWIN-WILLIAMS | PROMAR 200 ZERO VOC | B30W02651, OR EQUAL

WALLS

PT INTERIOR DRYWALL PAINT - EGGSHELL/ FLAT
SHERWIN-WILLIAMS | PROMAR 200 ZERO VOC | B30W02651, OR EQUAL

DOORS AND FRAMES

PT KELLY MOORE HIGH SOLIDS POLYURETHANE 100 SERIES B65W00625,
OR EQUAL, COLORS TO MATCH (E)

OWNER: LODI UNIFIED SCHOOL DISTRICT

**PROJECT NAME: BEAR CREEK HIGH SCHOOL
RESTROOMS MODERNIZATION**

CLIENT ADDRESS: 10555 THORNTON ROAD, STOCKTON, CA 95209

REVISIONS:		
	DESCRIPTION	DATE
1	Addendum 1	10/26/2023
2		
3		
4		
5		
6		
7		
8		
9		
10		

PROJECT NO: Project Number

DATE ISSUED: Issue Date

SCALE: As indicated

A50.1

FINISH & DOOR SCHEDULES AND DETAILS



2335 BROADWAY #301 OAKLAND, CA 94612
T 510.267.3180 WWW.SVA-ARCHITECTS.COM

THIS DOCUMENT CONTAINS INFORMATION PROPRIETARY TO SVA ARCHITECTS INC. AND IS FURNISHED IN CONFIDENCE FOR THE LIMITED PURPOSE OF EVALUATION, BIDDING OR REVIEW. THIS DOCUMENT OR ITS CONTENTS MAY NOT BE USED FOR ANY OTHER PURPOSE AND MAY NOT BE REPRODUCED OR DISCLOSED TO OTHERS WITHOUT THE PRIOR WRITTEN CONSENT OF SVA ARCHITECTS INC. ALL RIGHTS RESERVED. © COPYRIGHT 2018.