



Combined CTE @ Midland

➤ Completed Work:

- CMU work on all floors continued.
- Site retaining walls started.
- Dock leveler pit completed.
- Window glazing started on Levels 3 and 4.
- Ductwork installation continued on Levels 2, 3, and 4.
- Plumbing above ceiling continued on all floors.

➤ Upcoming Work / Look Ahead:

- **Drilling for geothermal wells to start on Monday 10/30.**
- CMU work to continue on all floors.
- Curtainwalls to start install and glazing to continue.
- Ductwork installation to continue.
- Electrical and plumbing wall rough-ins to continue with masonry.
- **Drilling for the geothermal wells is to start on Monday, 10/30 and will be loud.**

Combined CTE @ Midland

Curtainwall progressing at L1 and L2 Admin area



Week Ending October 27, 2023

Combined CTE @ Midland

Metal stud work progressing at main entry



Week Ending October 27, 2023

Combined CTE @ Midland

Retaining walls at ramp poured



Week Ending October 27, 2023



Combined CTE @ Midland

Glazing progressing on South side of the building



Week Ending October 27, 2023



Combined CTE @ Midland

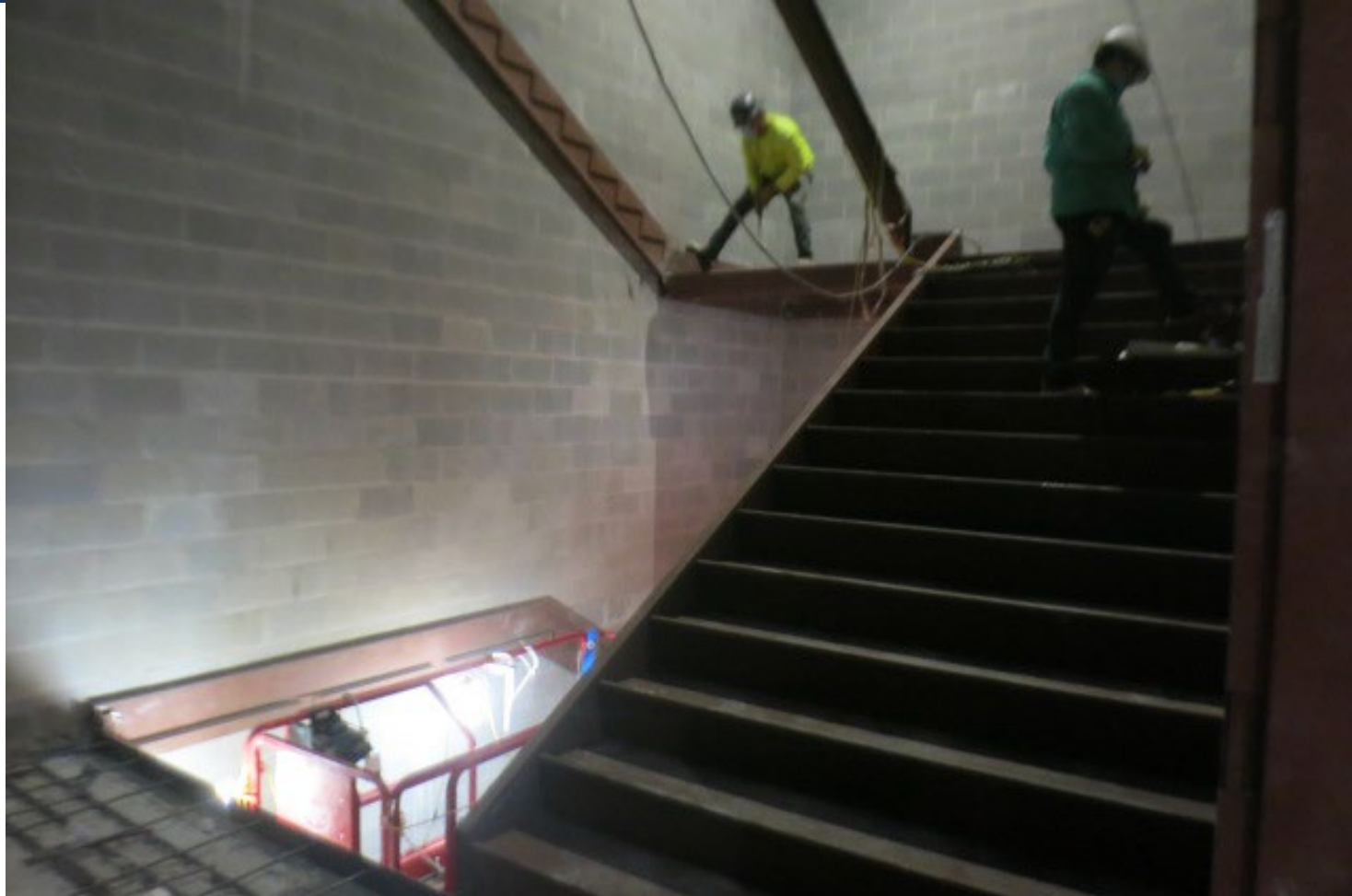
CMU column surrounds completed at Multipurpose



Week Ending October 27, 2023

Combined CTE @ Midland

Stair D steel being set





Combined CTE @ Midland

Metal stud work progressing at Common area



Week Ending October 27, 2023



Combined CTE @ Midland

Metal stud and gyp board work progressing at L4 Admin



Week Ending October 27, 2023