

# Harry S Fisher Elementary School



Informational Session

October 26, 2023

# Board Of Education Decisions Are Based On...



Children  
Staff  
Tax Payers



# Board Of Education Goals

## **Student Achievement Goal**

Support all students in achieving their best possible learning outcomes.

## **Engagement Goal**

Engage students in the learning process by providing authentic learning experiences.

## **Well-Being Goal**

Create an environment and opportunities that support well-being for all students.

## **Fiscal Oversight**

Align budgetary spending with district goals and strategies.

Information Utilized In Making The Decision To Close  
Harry S. Fisher Elementary School

# Board Of Education's Rationale For Looking Into A School Closure

## REASON 1

**The Board Of Education was looking to continue the work of the September 2019 New England School Development Council Best Use Of School Facilities Study.**

- The study provided the Board of Education with five facility use options to pursue.
- The facility work being completed by the Board of Education in 2019 was disrupted by the COVID pandemic.
- Original Facilities Public Hearing date: February 27, 2020

# New England School Development Council September 2019 - Best Use Of School Facilities Study

Option 1	
Grade Level Alignment	Building
Pre K - Grade 2	Plymouth Center School
Grade 3 - Grade 5	Fisher Elementary School
Grade 6 - Grade 8	Eli Terry Jr Middle School
Grade 9 - Grade 12	Terryville High School

Option 2	
Grade Level Alignment	Building
Pre K - Grade 3	Plymouth Center School or Fisher Elementary School
Grade 4 - Grade 6	Eli Terry Jr Middle School
Grade 7 - Grade 12	Terryville High School

Option 3	
Grade Level Alignment	Building
Pre K - Grade 3	Plymouth Center School or Fisher Elementary School
Grade 4 - Grade 7	Eli Terry Jr Middle School
Grade 8 - Grade 12	Terryville High School

Option 4	
Grade Level Alignment	Building
Pre K - Grade 6	Plymouth Center School
Kindergarten - Grade 6	Fisher Elementary School
Grade 7 - Grade 12	Terryville High School

Option 5	
Grade Level Alignment	Building
Grade Pre K - Grade 2	Plymouth Center School
Grade 3 - Grade 6	Fisher Elementary School
Grade 7 - Grade 12	Terryville High School

Goman York  
Property  
Advisors LLC

607 Less Students  
(31.7% Decrease In  
Student Population)

**GOMAN+YORK**

YEAR	SCHOOL DISTRICT ENROLLMENTS
2023	1,306
2022	1,308
2021	1,300
2020	1,368
2019	1,429
2018	1,426
2017	1,504
2016	1,522
2015	1,556
2014	1,577
2013	1,619
2012	1,665
2011	1,745
2010	1,799
2009	1,864
2008	1,913

New England School  
Development Councils  
Projected 2028 District  
Enrollment

1172 Students



# Board Of Education's Rationale For Looking Into A School Closure

## REASON 2

**The District's Pre K Smart Start Grant, which offsets the cost of a Pre K teacher and Pre K paraprofessional, is scheduled to end (\$75,000).**

- There is no guarantee that the State of Connecticut will continue to fund this grant after the 2023-2024 school year.

**New legislation has adjusted the kindergarten enrollment age.**

- The date of kindergarten enrollment has been moved from January 1st to September 1st.
- The adjusted date of kindergarten enrollment will impact twelve (12) students currently enrolled in our Pre K program and additional children in private Pre K programs promotion to kindergarten.



# Board Of Education's Rationale For Looking Into A School Closure

## REASON 3

**Fiscal oversight and responsibility to the taxpayer based on building capacity.**



# Current & Proposed Configuration Building Capacity

## Current Building Capacity

School	Current Configuration	Number of Students	Building Capacity
Plymouth Center School	PreK - Grade 2	309	59%
Fisher Elementary School	Grade 3 - Grade 5	284	52%
Eli Terry Jr Middle School	Grade 6 - Grade 8	284	47%
Terryville High School	Grade 9 - Grade 12	374	53%

## Proposed Configuration Building Capacity

School	New Configuration	Number of Students	Building Capacity
Plymouth Center School	Universal Pre K - Grade 2	345	65%
Eli Terry Jr Intermediate School	Grade 3 - Grade 6	392	65%
Terryville High School	Grade 7 - Grade 12	550	79%
PCS Would Have 5 Open Classrooms		Eli Terry Would Have 6 Open Classrooms	

\* The New England School Development Council recommends a 10% buffer in each building to address possible future enrollment increase \*

# Breakdown Of The Plymouth Board Of Education Budget

Category	2024-2025 Estimated Budget Increase	2024-2025 Estimated Percentage Increase	Total 2024-2025 Budgetary Increase Based On Five Categories  \$1,000,550
Salaries	\$566,997	2.17%	
Benefits	\$269,988	1.03%	
Regular Transportation	\$51,074	4.35%	
Special Education Transportation	\$27,392	3.5%	
Special Education Outplacements	\$85,099	8.0%	

## Town Mill Rate

A One Mill Increase = \$772,572

(Excluding Motor Vehicle Tax)

# Board Of Education's Rationale For Looking Into A School Closure

## REASON 4

### Positive Impact On Each School:

#### Plymouth Center School

- Offer free universal Pre K to all 4 year olds.
- Increase the percentage of students prepared for kindergarten.
- Save parents money on private Pre K enrollment.
- Increase School Resource Officer coverage.

#### Eli Terry Jr. Intermediate School

- Transition students to grade 7 and build academic independence by keeping grade 6 in elementary school an additional school year.
- Increase School Resource Officer coverage.

#### Terryville High School

- Increase the number of elective opportunities for our grade 9 - grade 12 students by moving our grade 7 - 8 unified art teachers to Terryville High School.
- Enable high academic achieving grade 7 - grade 8 students to take high school level academic courses.

# Two Configuration Options, Building Considerations, And Savings/Costs Associated With The School Closure Decision

# Proposed Building Closure District Configuration Options

## Option #1

(2019 Study Option #5)

Plymouth Center School

Universal Pre K - Grade 2

Eli Terry Jr Intermediate School

Grade 3 - Grade 6

Terryville High School

Grade 7 - Grade 12

## Option #2

(2019 Study Revised Option #3)

Plymouth Center School

Pre K - Grade 3

Eli Terry Jr Intermediate School

Grade 4 - Grade 8

Terryville High School

Grade 9 - Grade 12

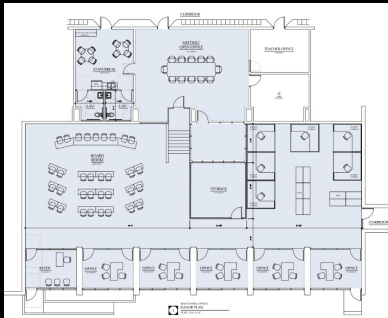
# Possible Building Renovations Associated With A Building Closure

Building Projects To Be Completed	
School	Renovation
Plymouth Center	3 Pre K Classroom Bathrooms
Terryville High School	Add 2 Sinks For Art Rooms
Eli Terry	Renovate 3 Science Labs Into Classrooms
Eli Terry	Convert Tech Ed Room Into Library
Terryville High School	Clean/Renovate Foods Room

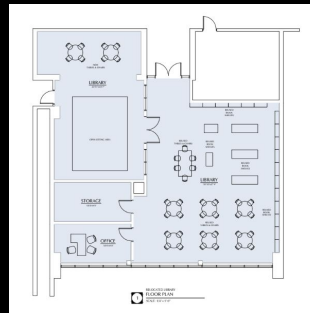
Central Office Projects To Be Completed	
School	Renovation
Eli Terry	Paint The Library
	Carpet The Library
	Install Bathroom & Kitchenette
	Install Cubicles
	Renovate Front Offices
	Install Heat/AC In Offices
	Design A Board Room
	Conference Room Door

Outdoor Projects To Be Completed	
School	Renovation
Eli Terry	Renovate Courtyard
Eli Terry	Sign On Building
Plymouth Center	Pre K Outdoor Equipment
Eli Terry	Install Playscape

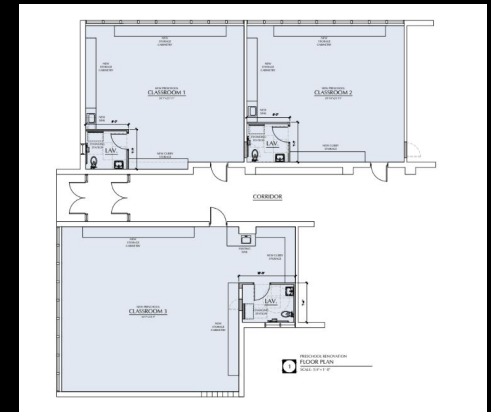
Central Office



Eli Terry Library



Pre K Bathrooms



## Savings Associated With The Closure Of Fisher School

Positions Reductions	Estimated Savings
1 Certified Position	\$87,000
2 Non-Certified Positions	\$181,000
Administrative Contractual Reductions	\$41,000
Other Reductions	Estimated Savings
Utilities & Maintenance Supplies	\$150,000

Total Estimated Savings = \$459,000

## Expenses Associated With The Reconfiguration & Adding Universal Pre K

Positions Additions	Estimated Expense
PCS Coordinator of Pre K Services	\$95,000 (Salary)
	\$25,000 (Benefits)
Two Pre K Teachers	\$65,000 X 2 = \$130,000 (Salary)
	\$25,000 X 2 = \$50,000 (Benefits)
Four Pre K Paraprofessionals	\$23,000 x 4 = \$92,000 (Salary)
THS Hall Monitor	\$23,000 (Salary)

Total Approximate Expense = \$415,000



# Repurposing Funds Within Our Operating Budget Over The Past 2 Years

## Plymouth Center School

STEM Teacher/Program  
Library Media Specialist/Program  
School Counselor

## Harry S Fisher Elementary School

STEM Teacher/Program  
Additional Special Education Teacher

## Eli Terry Jr Middle School

Full Time Secretary  
Technology Education Teacher/Program  
Family And Consumer Science Teacher/Program

## Terryville High School

Certified Career Counselor  
Best Buddies/Unified Program

## District

25 Full Time Paraprofessionals (Part Time To Full Time)  
English Language Learner Teacher  
English Language Learner Tutor

# Questions We Know You Might Have With Either Configuration

1. Why did you decide to close Fisher and not Eli Terry?
2. How will you separate the 7th and 8th grade students from the older or younger students depending on the building configuration?
3. Will there be separate bathrooms for the 7th and 8th grade students?
4. Will there be grade 6th, 7th and 8th grade athletics?
5. Would there be recess and a playscape at Eli Terry if Fisher closed?
6. What will my child's schedule be?
7. When would school start and end?
8. Will we uphold the traditions of our former schools?
9. How will clubs be impacted?
10. How would courses that need to share the same space run?
11. How are you going to pay for the possible building renovation projects?
12. Why do you need to add bathrooms in Pre K classrooms?

# Where We Are And Next Steps

The Board of Education rescinded the votes to close Harry S. Fisher Elementary School and to reconfigure the Plymouth Public School District. (October 25, 2023)

The Board of Education is hosting an informational and question and answer session. (October 26, 2023)

The Board of Education will be sending out a survey to the entire school community regarding the possible closure of Harry S. Fisher Elementary School. (TBD)

The Board of Education will be hosting a second informational and question and answer session to discuss community feedback. (TBD)

The Board of Education will be meeting, in open session, to discuss possible action considered based on community feedback. (TBD)

The Board of Education will share their discussion points and possible action with regard to the future closure of Harry S. Fisher Elementary School and reconfiguring the Plymouth Public School District with the entire school community. (TBD)

The Board of Education will revote on the issue of closing Harry S. Fisher Elementary School and reconfiguring the Plymouth Public School District. (TBD)

# Questions



## Guidelines For The Question And Answer Period

1. Please be respectful with comments and questions asked.
2. Individuals are limited to 2 minutes per speaker (time cannot be gifted from one community member to another).
3. Questions and comments should only be directed to the Board Of Education and the Superintendent.
4. All questions and comments should be related to the closure of Harry S. Fisher Elementary School and a new potential district reconfiguration.