

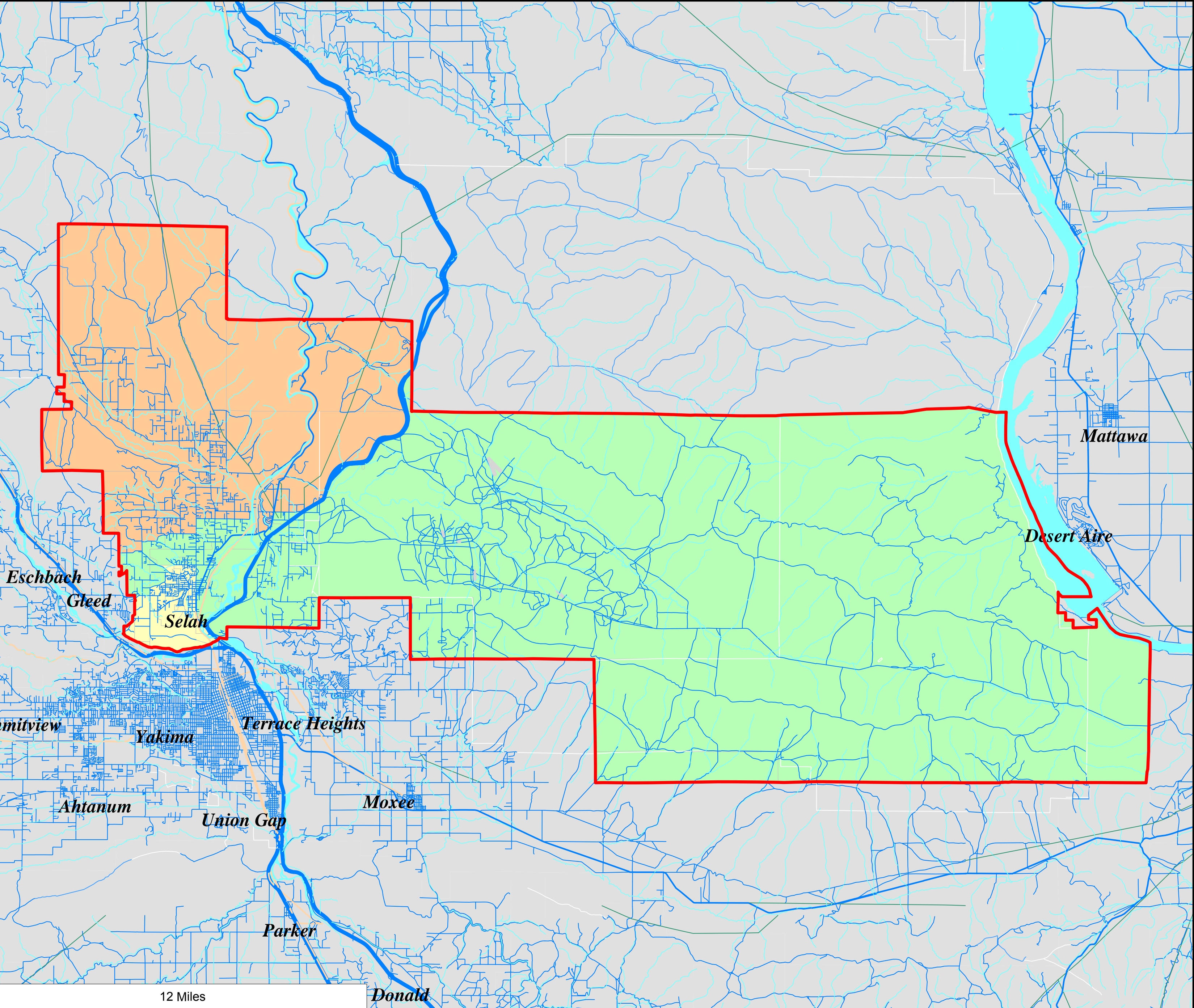
Selah School District

Three Board of Director Districts based on Census 2010 Geography

Board Districts as Approximated Using Census 2010 Geography

- 1st District
- 2nd District
- 3rd District
- 4th District

District Outline



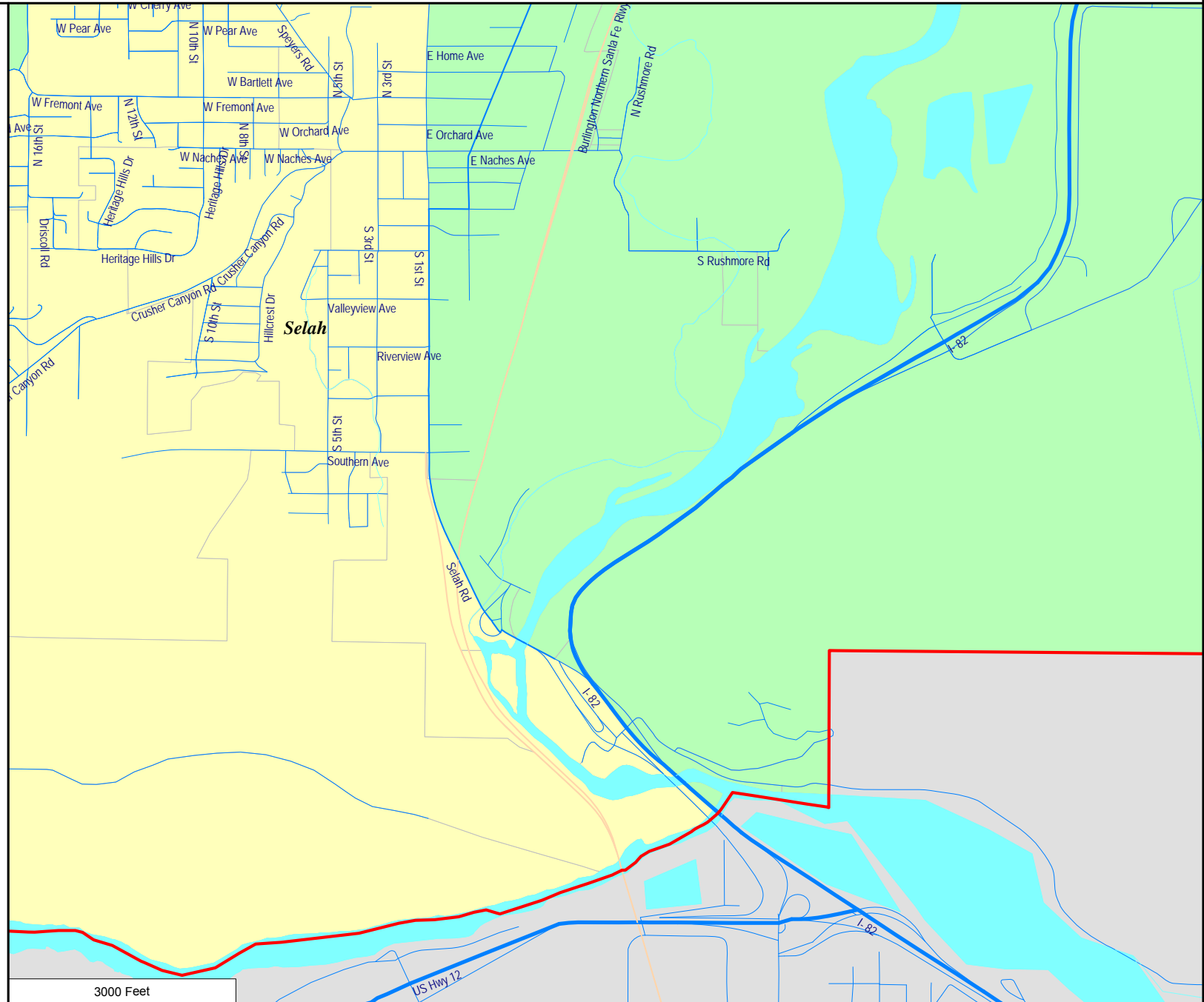
Summary of Population by Race and Hispanic Origin

District Number	Total Population	Total Population by Race							Two or More Races	Hispanic Origin (of any race)
		Single Race								
		Total	White	Black African American	American Indian and Alaska Native	Asian	Native Hawaiian and Other Pacific Islander	Other Race	Total	
1st	4,647	4,482	3,991	21	57	25	9	379	165	761
2nd	4,688	4,580	4,175	23	50	36	9	287	108	580
3rd	4,686	4,518	4,189	7	37	26	2	257	168	525
Totals.....	14,021	13,580	12,355	51	144	87	20	923	441	1,866

Selah School District
District Summary Report

Director District Number	Ideal Population	Total Population	Deviation from Ideal	% Deviation from Ideal	White Population	Hispanic Origin (of any race)	Non White & Mixed
1st	6,225	4,647	-1,578	-25.35	3,991	761	656
2nd	6,225	4,688	-1,537	-24.69	4,175	580	513
3rd	6,225	4,686	-1,539	-24.72	4,189	525	497
Totals.....		<u>14,021</u>	<u>-4,654</u>		<u>12,355</u>	<u>1,866</u>	<u>1,666</u>




Three Board of Director Districts based on Census 2010 Geography



Selah School District

Three Board of Director Districts based on Census 2010 Geography

Board Districts
as Approximated Using
Census 2010 Geography

-  1st District
-  2nd District
-  3rd District

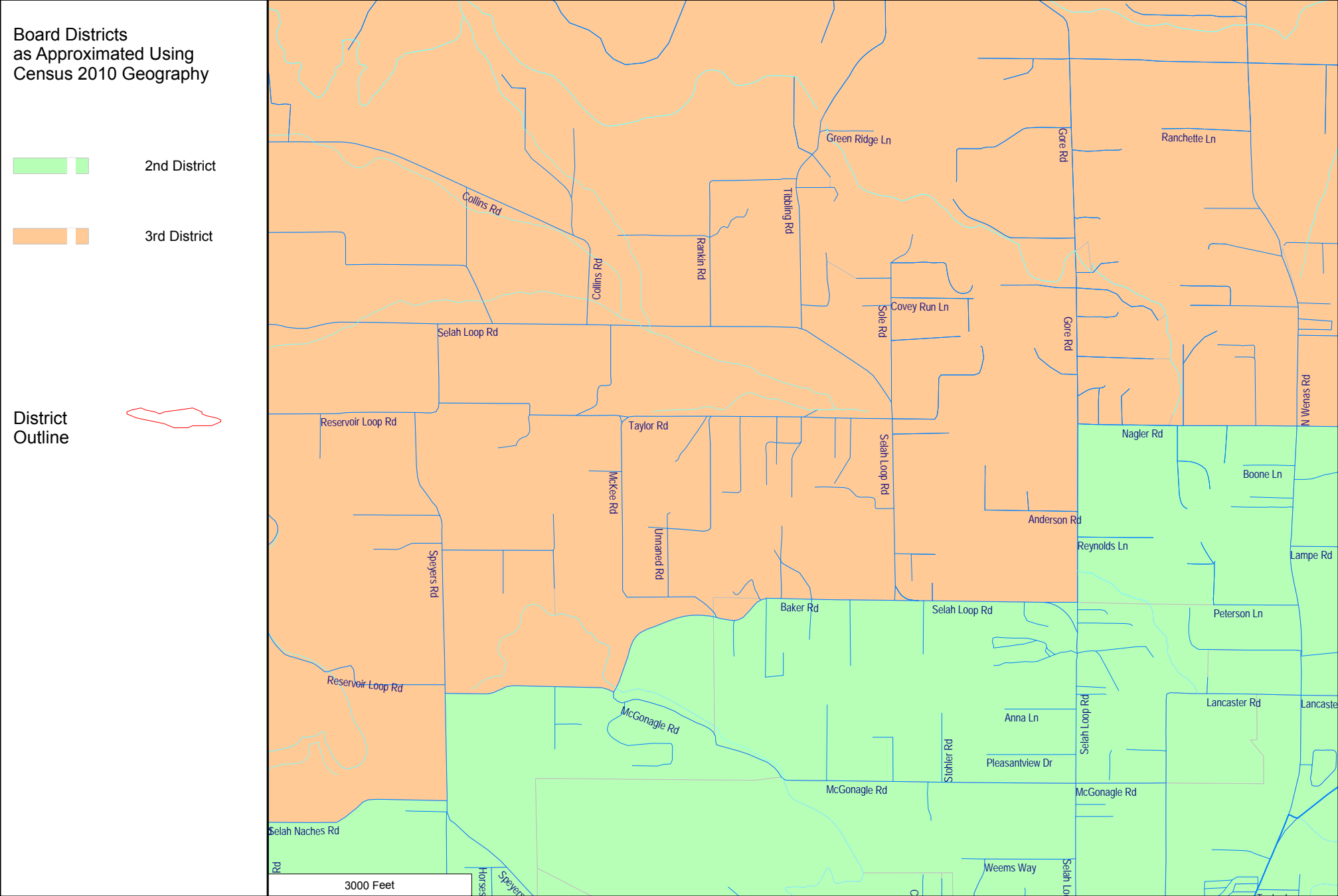
District
Outline



3000 Feet

Selah School District

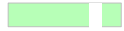
Three Board of Director Districts based on Census 2010 Geography



Selah School District

Three Board of Director Districts based on Census 2010 Geography

Board Districts
as Approximated Using
Census 2010 Geography

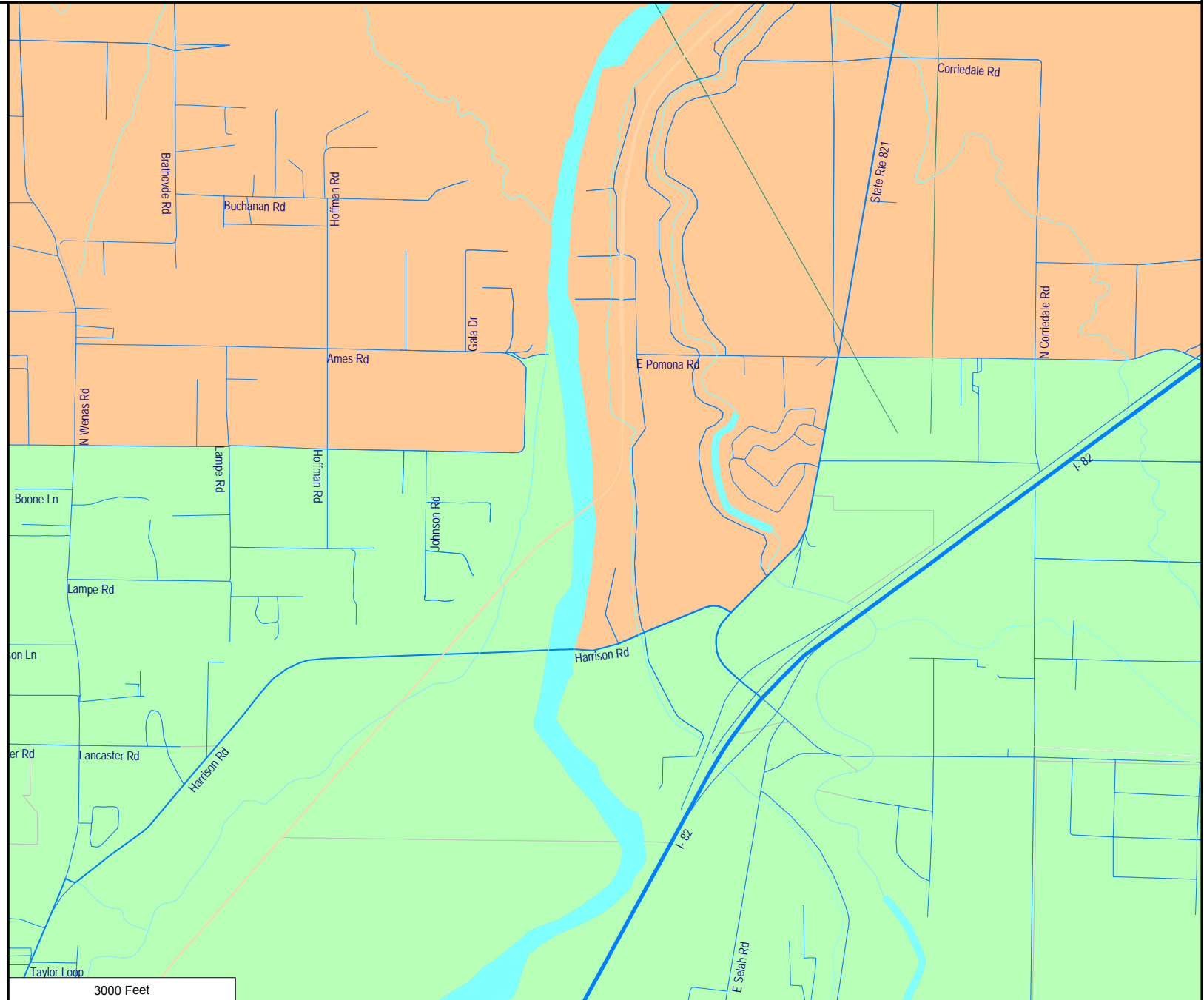


2nd District



3rd District

District
Outline



Selah School District

Three Board of Director Districts based on Census 2010 Geography

