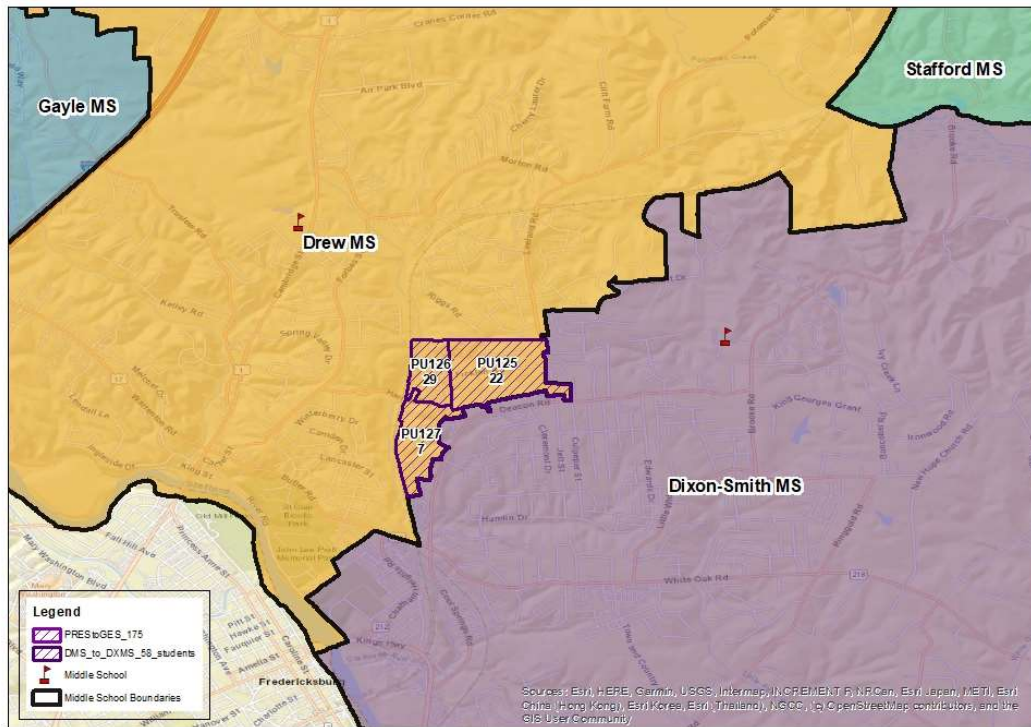


Drew Middle School Boundary Change Scenario C



Highlights:

- Proposes to change Drew and Dixon-Smith boundaries
- Reassigns three (3) planning units (**58+/-students**) from Drew to Dixon-Smith
- Next year, after reassignments Dixon-Smith (78%) and Drew (99%) are projected to be under-capacity.
- Five years from now, projections suggest Dixon-Smith (77%) remains under-capacity, while Drew (112%) is over-capacity.
- Possible administrative boundary change consideration annually
- No significant shift in demographic balance

Subdivisions Slated For Reassignment:

Oaks of Highland Homes, Highland Homes, and Heather Hills.



Stafford County Public Schools

Inspire | Empower | Excel