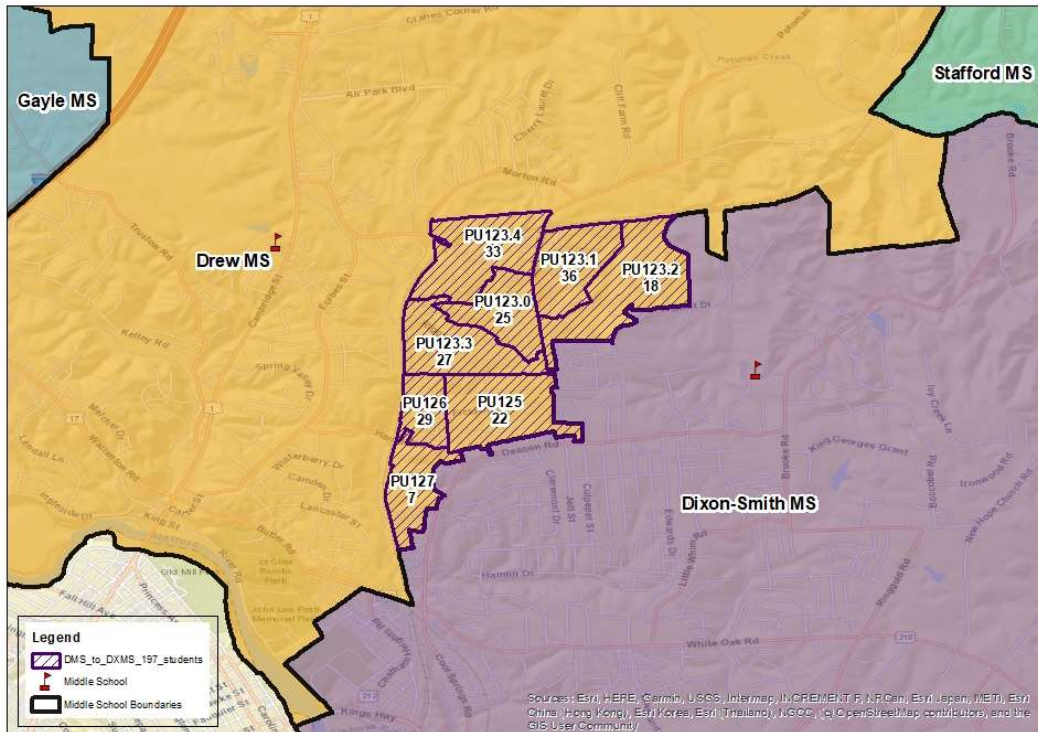


Drew Middle School Boundary Change Scenario A



Highlights:

- Proposes to change Drew and Dixon-Smith attendance boundaries
- Reassigns eight (8) planning units (**197+/- students**) from Drew to Dixon-Smith
- Next year (Fall 2022) with boundary change Dixon-Smith (91%) and Drew (78%) under capacity.
- In five years, Dixon-Smith (89%) and Drew (90%) are slated to remain under capacity
- No significant shift in demographic balance
- Staff concern, if too many students reassigned it will impact instructional program and organization structure at Drew.

Subdivisions Slated for Reassignment:

Leeland Station, Highland Homes, Heather Hills, Misty Forest



Stafford County Public Schools

Inspire | Empower | Excel