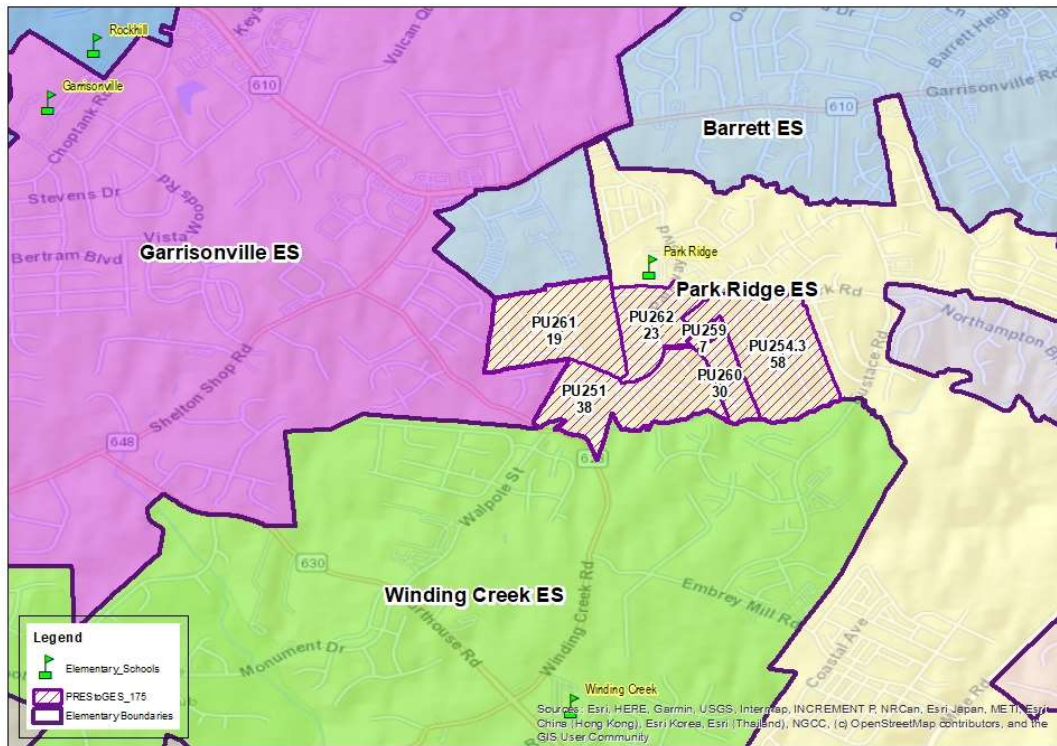


# Park Ridge ES Boundary Change Scenario B



## Highlights:

- Balances enrollment between Park Ridge and Garrisonville
- Reassigns 6 planning units (175+/- students)
- Next year, (with reassignments) Garrisonville (93%), while Park Ridge (101%) at-capacity (instead of 122% w/o boundary change).
- Five years after boundary change Garrisonville 90%, while Park Ridge 101% (instead of 122% w/o boundary change).
- Reassigns PU262 (23 +/- students) from “walkable” to Park Ridge, to Garrisonville bus ride.
- No significant change to demographic balance

## Subdivisions Slated for Reassignment:

Portion of Park Ridge subdivision and Oaks at Park Ridge.

Note: Elementary school enrollment totals are based on the September 30, 2021 official count.

Map prepared in January 2022 by SCPS Planning & GIS



**Stafford County Public Schools**

Inspire | Empower | Excel