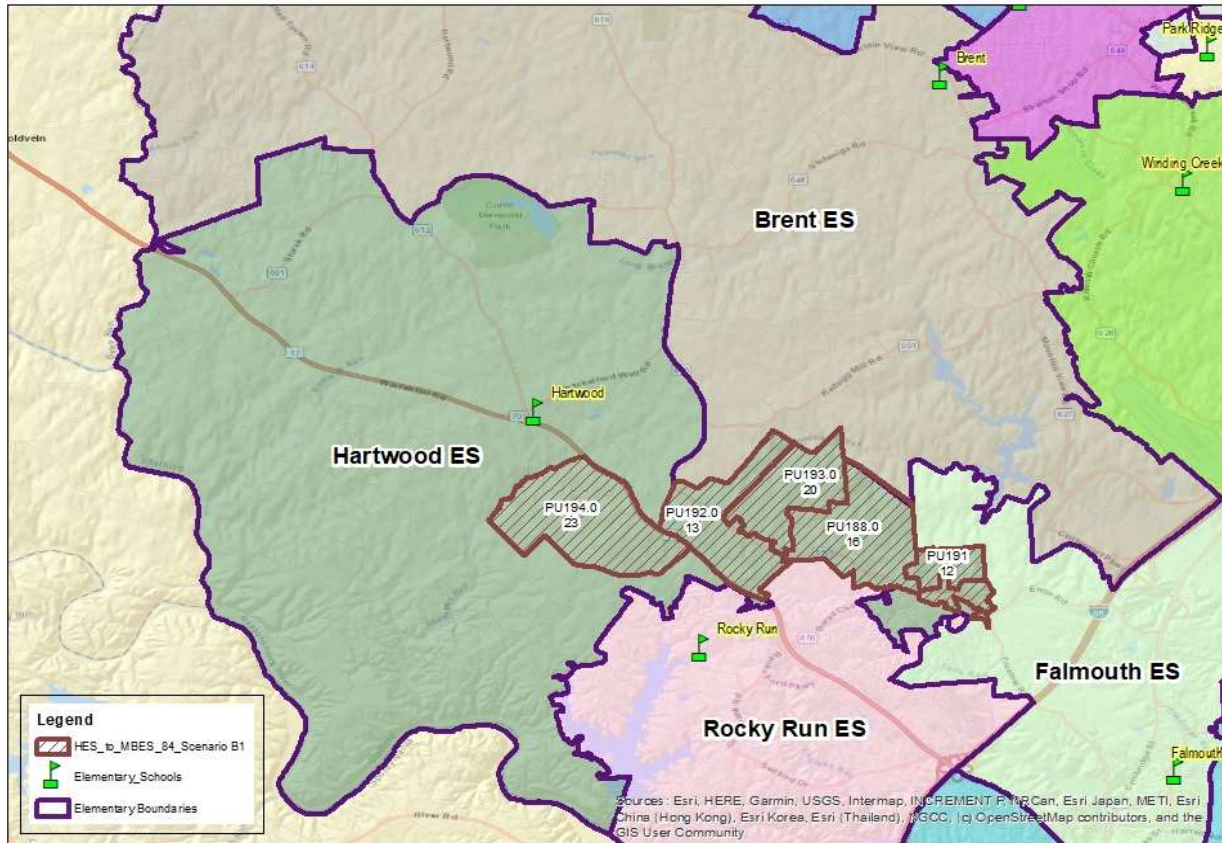


Hartwood ES Boundary Change Scenario B1



Note: Elementary school enrollment totals are based on the September 30, 2021 official count.

Map prepared in February 2022 by SCPS Planning & GIS

Highlights:

- Scenario proposes to reassign five (5) planning units (84 students) from Hartwood to Brent.
- No significant impact to demographic balance.
- Hartwood has expansion limitations (water and sewer)
- Next year with boundary change, projections suggest Hartwood (91%) and Brent (98%) utilized.
- Three years, after boundary change Hartwood (99%), and Brent (101%, -10 seat deficit) are slated to be at capacity.
- Five years after boundary change (Fall 2026) Hartwood slated to be at capacity (104%, -21 seat deficit), Brent overcapacity (109%, -78 seat deficit) and could be relieved by Rockhill (81%) that's slated to have +157 open seats.
- Creates an island that is disconnected from the larger attendance boundary.

Subdivisions Slated for Reassignment:

Hampshire Forest, Cypress Estates, Stefaniga, Sale Heights, portion of the Reserve at Poplar Crossing, Crestwood, The Willows, Woodview, Lerosé MHP, Meadows at Liberty Hall, Liberty Hall, Truslow Ridge, Wallace Farms, a portion of Butterfield, portion of England Run North (Bergen Way & Gabriels Lane) and Peacock Station.



Stafford County Public Schools

Inspire | Empower | Excel