



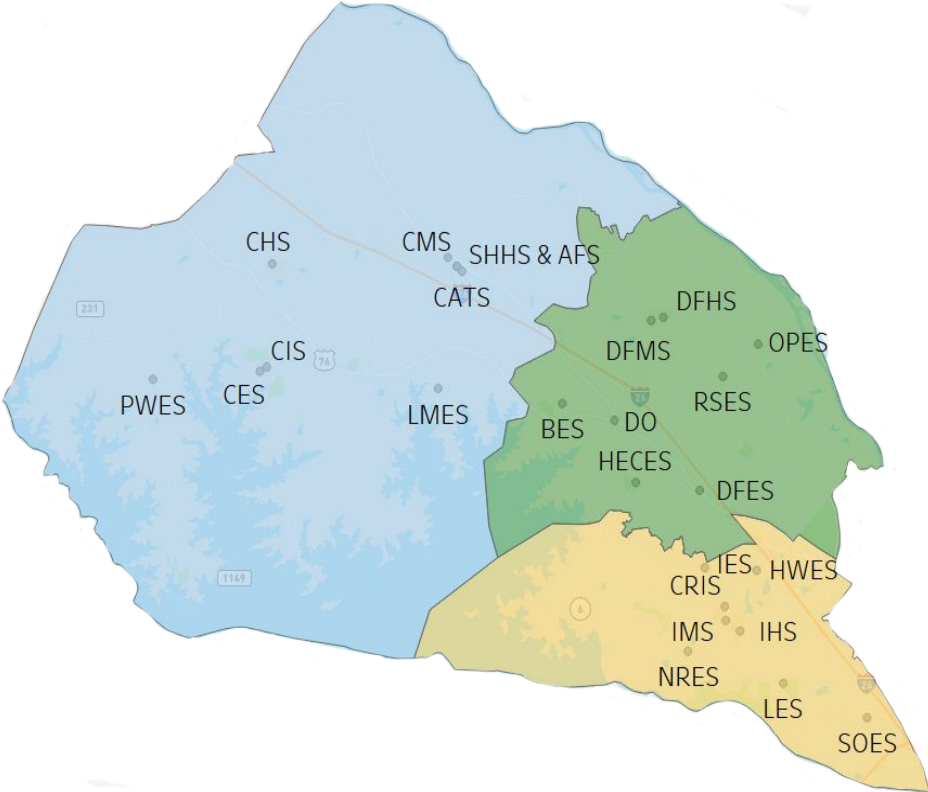
Potential Bond Referendum

**Building a
Strong
Educational
Foundation for**



District Five

OF LEXINGTON & RICHLAND COUNTIES



Our Mission

The mission of School District Five of Lexington and Richland Counties, in partnership with our stakeholders, is to prepare all students to be college and career ready by providing a challenging curriculum in **a safe, secure**, diverse, and **equitable learning environment** focused on academic, social, and emotional growth and development.

“Achieve the greatest educational returns”

Top challenges to our Mission

3. Facility Quality

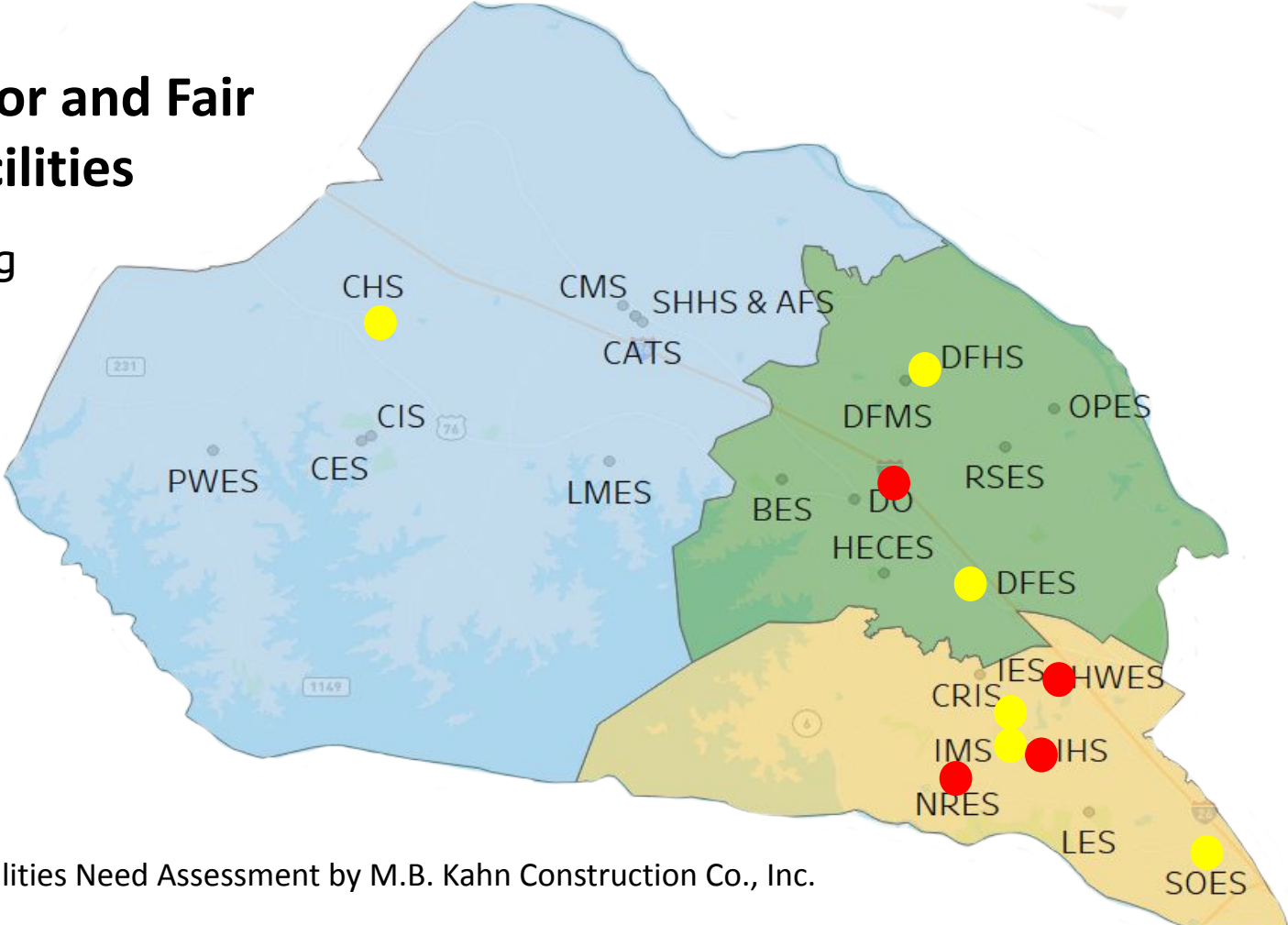
Four (4) Options to address the quality of facilities in School District Five

4. School Capacity

Four (4) Phases to address the growth in Chapin and school capacity throughout the district

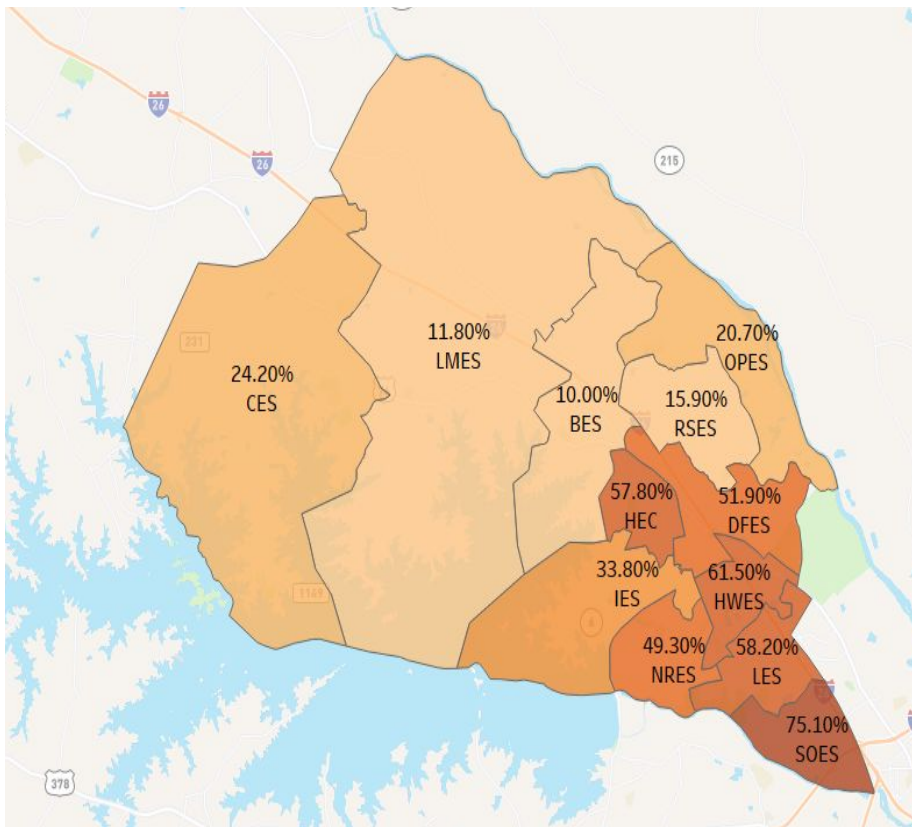
Location of Poor and Fair Rated Facilities

- Poor Rating
- Fair Rating

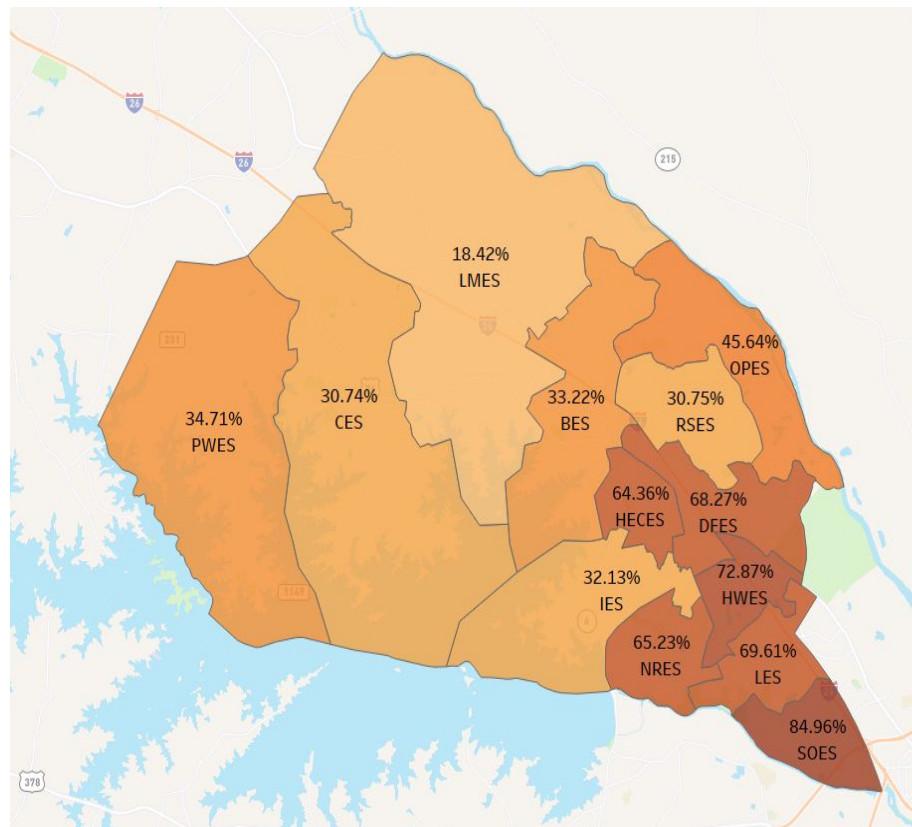


Poverty in School District Five of Lexington and Richland Counties

2011



2022



Alternative Education Programs

SHHS

Academy for Success

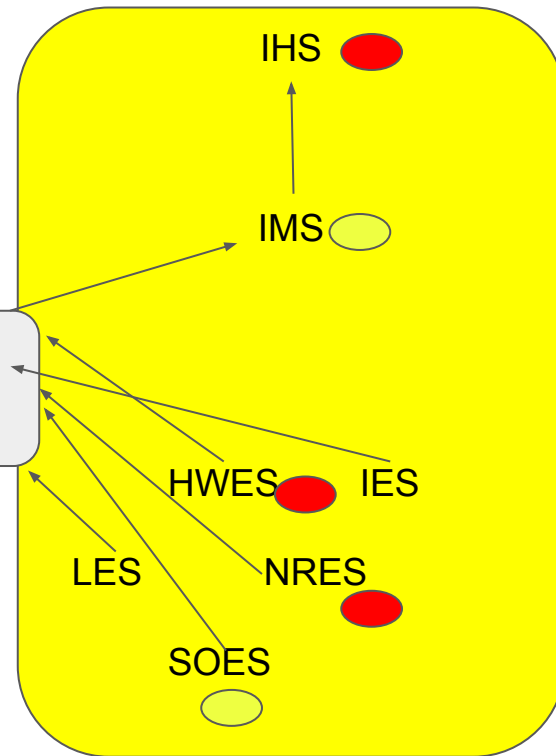
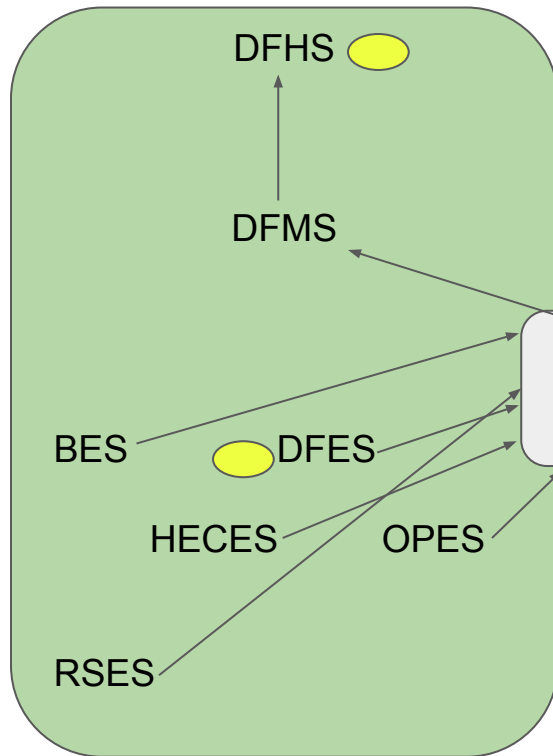
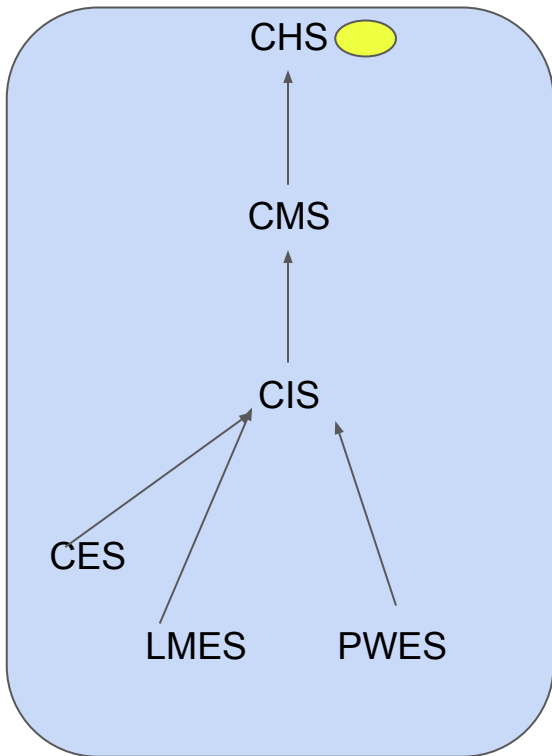
Adult Education

The Center for Advanced Technical Studies

Flexible Innovative Virtual Education (FIVE)

● Poor Rated Facilities

● Fair Rated Facilities



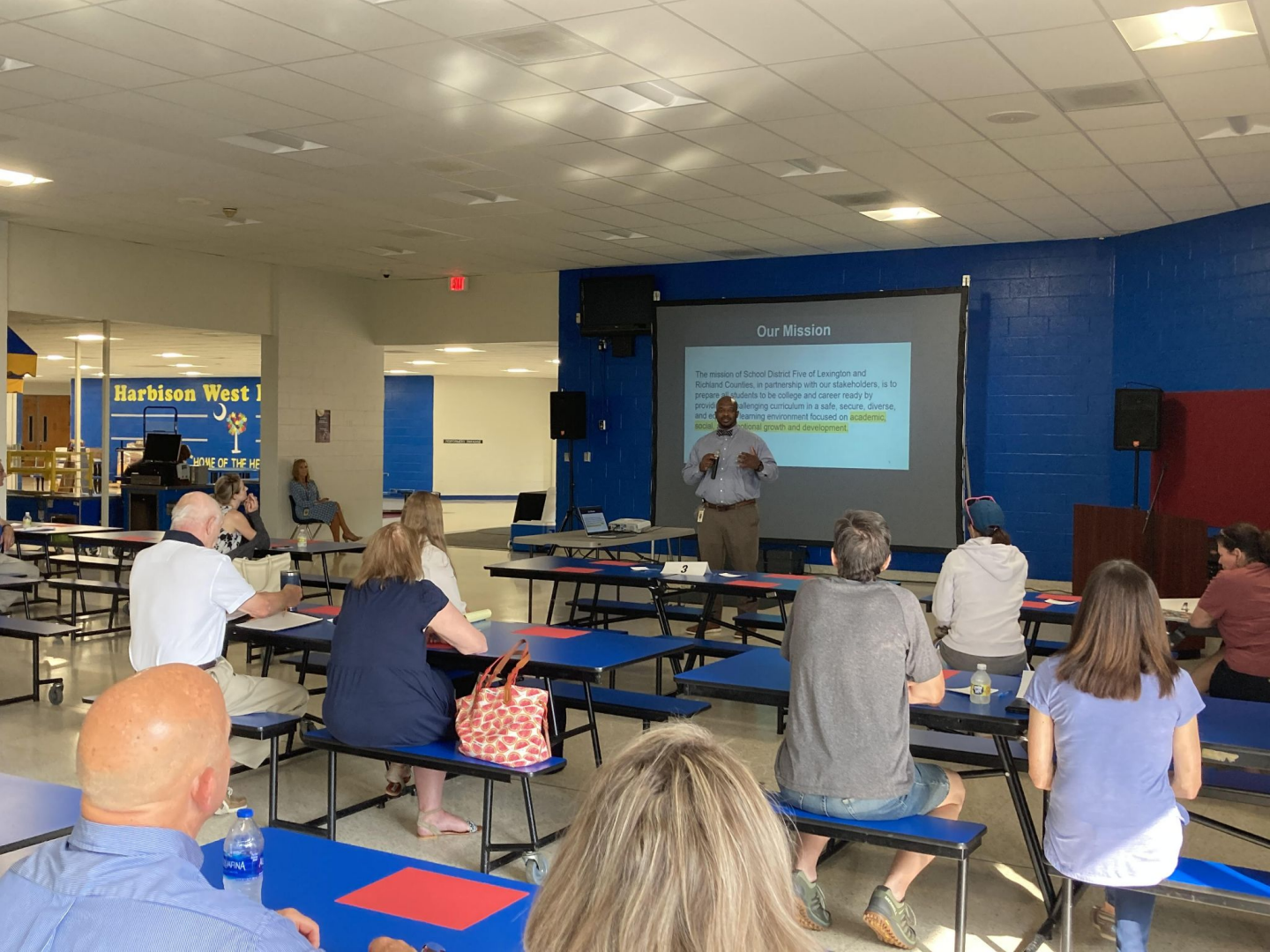


Board of Trustees should consider the following options



Option 1	Take no action on the remaining poor or fair Rated Facilities	Rezone 13 Elementary schools to address growth in Chapin schools or add portable classrooms to high capacity schools
Option 2*	Borrow Above our Millage	\$340 Million*** Increase Debt Service Millage Addresses All D5LR Schools
Option 3*	Borrow At our Millage	\$150 Million*** No Debt Service Millage Increase Maintain Tax Rate (69.5 Mills) Addresses All D5LR Poor and Fair Facilities
Option 4*	Borrow Below our Millage	\$150 Million***, Small Debt Service Millage Decrease Longer Payoff time and More Interest (68.5 Mills) Addresses All D5LR Poor and Fair Facilities

*OPTIONS 2, 3 and 4 WILL REQUIRE A Bond Referendum,
 ** Amounts are estimates of cost and do not include inflation, *** Estimates with Inflationary Impact



Community Input Meeting

Harbison West Elementary

June 7, 2022



Options #3 and #4 Bond Referendum Projects

(AFTER PUBLIC INPUT)

Project	Estimated Cost (millions)	Phase (years)
Professional Development Wing - DO	\$4,700,000.00	2023-2025
Dutch Fork Middle School - 6th Grade Academy	\$20,900,000.00	2023-2025
Irmo Middle School - 6th Grade Academy	\$20,900,000.00	2023-2025
CrossRoads Intermediate - Renovation for Swing Space	\$1,970,000.00	2025-2026
Nursery Road Elementary - Remodel	\$21,730,000.00	2025-2027
Harbison West Elementary - Early Childhood Education Center	\$200,000.00	2027
New Dutch Fork Elementary	\$41,500,000.00	2023-2025
Alt. Education Programs - Rosenwald-Richlex Bldg.	\$750,000.00	2025-2026
Seven Oaks Elementary - Security Upgrades	\$450,000.00	2026-2027
Chapin High - Fine Arts Building	\$26,200,000.00	2024-2026
Dutch Fork High Stadium Renovations	\$3,900,000.00	2023-2024
Irmo High Stadium Renovations	\$3,900,000.00	2026-2027
Dutch Fork High Renovation	\$2,900,000.00	2026-2027
School Security Upgrades - District-Wide: To be addressed in CAPITAL		
TOTAL	\$150,000,000.00	2023-2027

School Finance 101

Millage – a tax on real estate or other property

Operations Millage-

Salaries, Benefits,
Supplies, Utilities,
Maintenance



4% Property

100% Rebate



6% Property

0% Rebate

Debt Service Millage -

Construction,
Technology, Equipment
and Renovations



4% Property

0% Rebate*



6% Property

0% Rebate

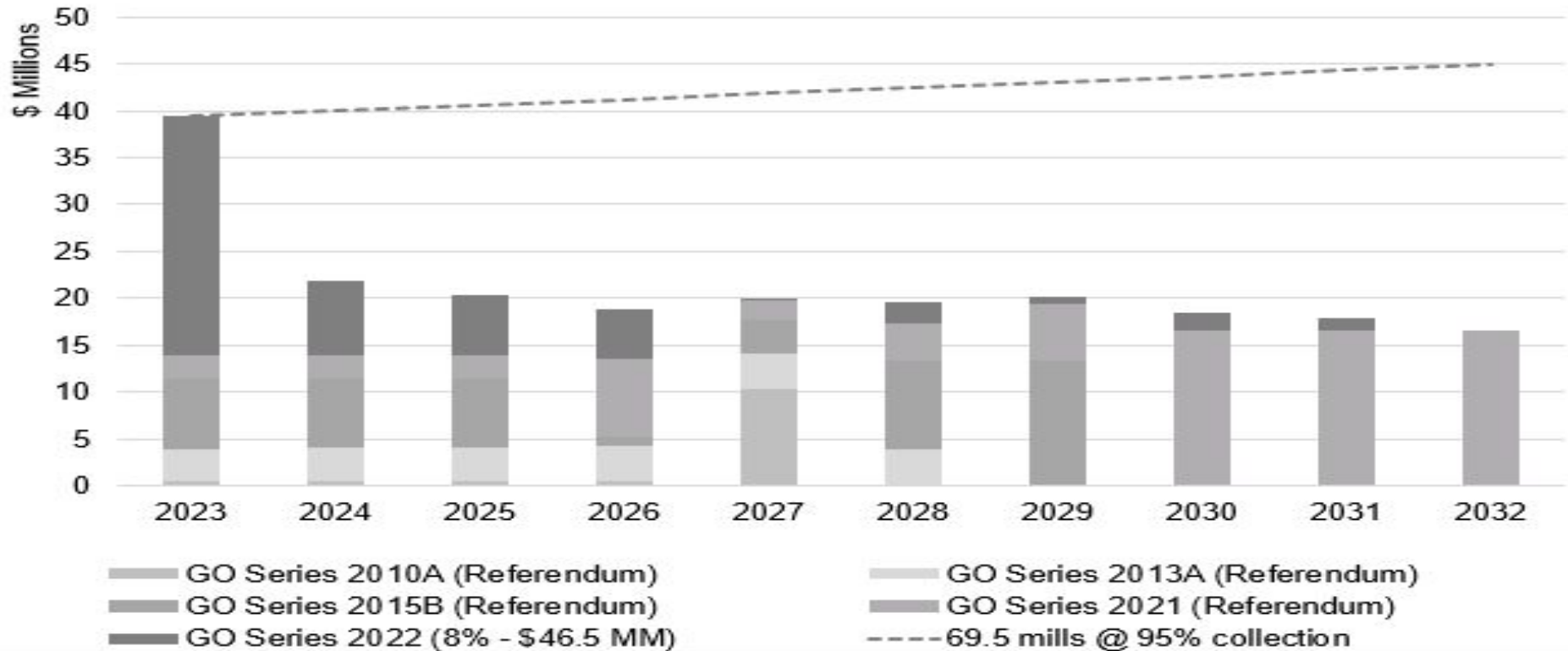
* Does not include Homestead Exemptions





Existing Debt and the Debt Capacity under current tax rate

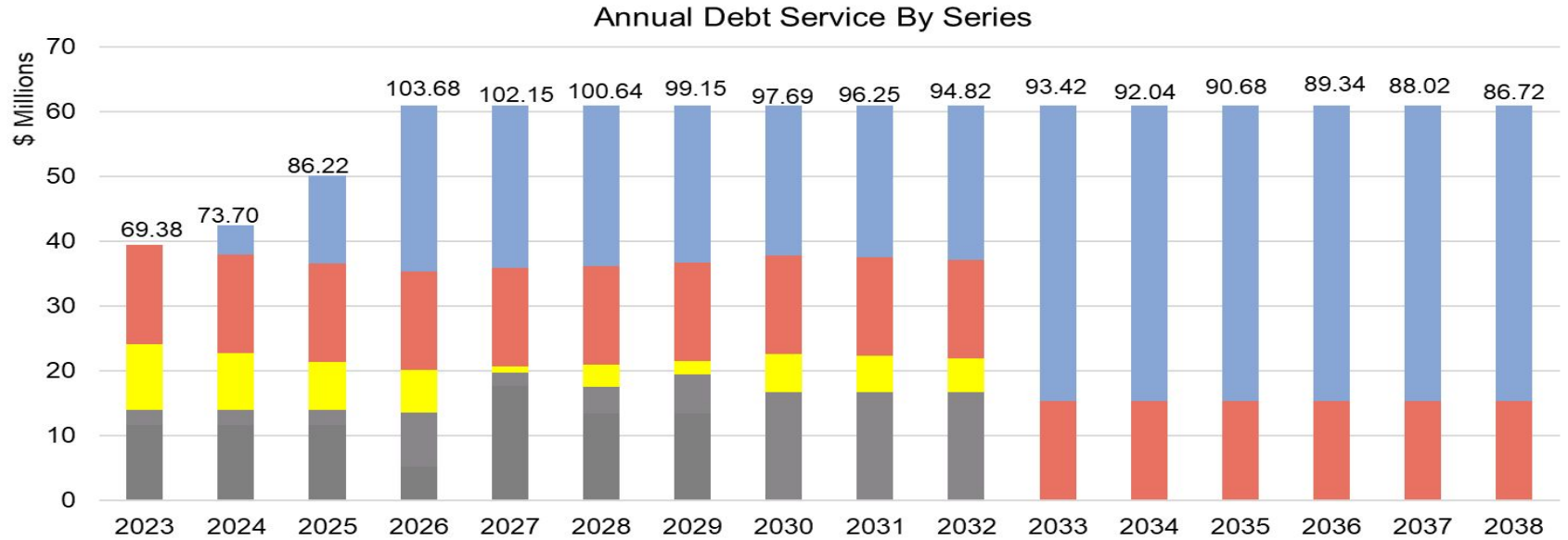
Annual Debt Service By Series





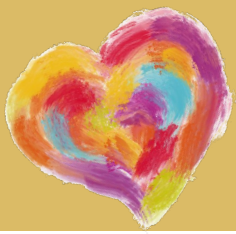
Board considers Option #2

Requires Tax Rate Increase - +\$136 per \$100,000 FMV



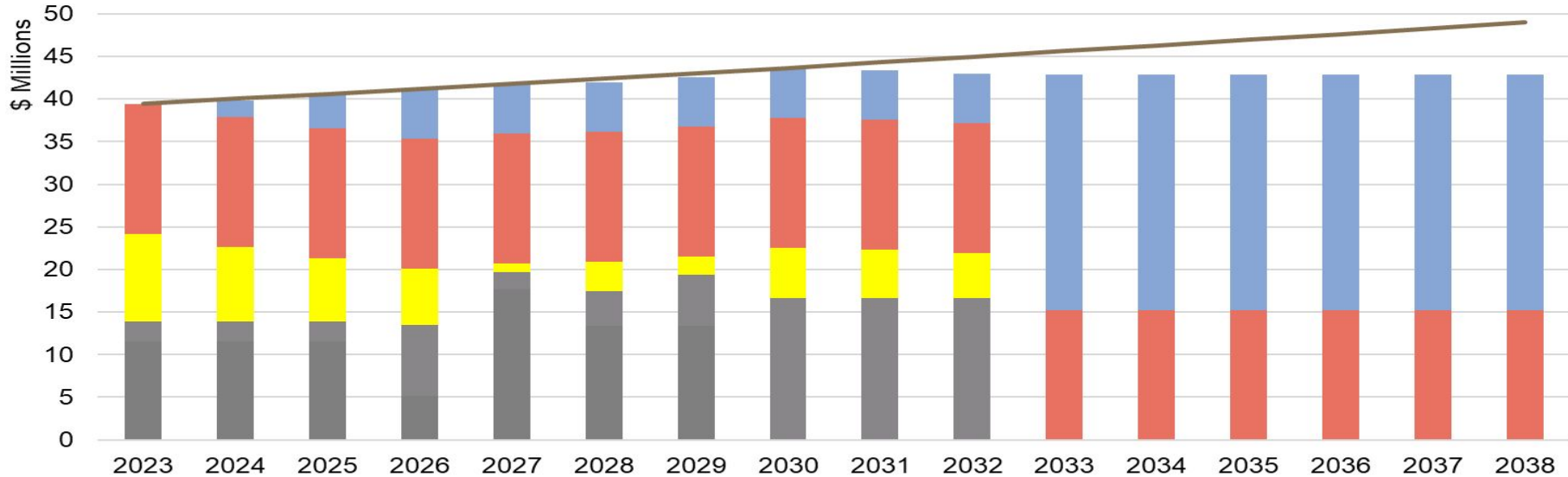
Gray - Previous Debt
Yellow - Irmo High Debt

Red - Annual Maintenance
Blue - Bond Referendum



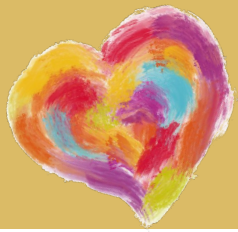
Board considers Option #3 - \$150 Million with no Tax rate Increase (69.5 mills) Requires \$0 per \$100,000 FMV

Annual Debt Service By Series

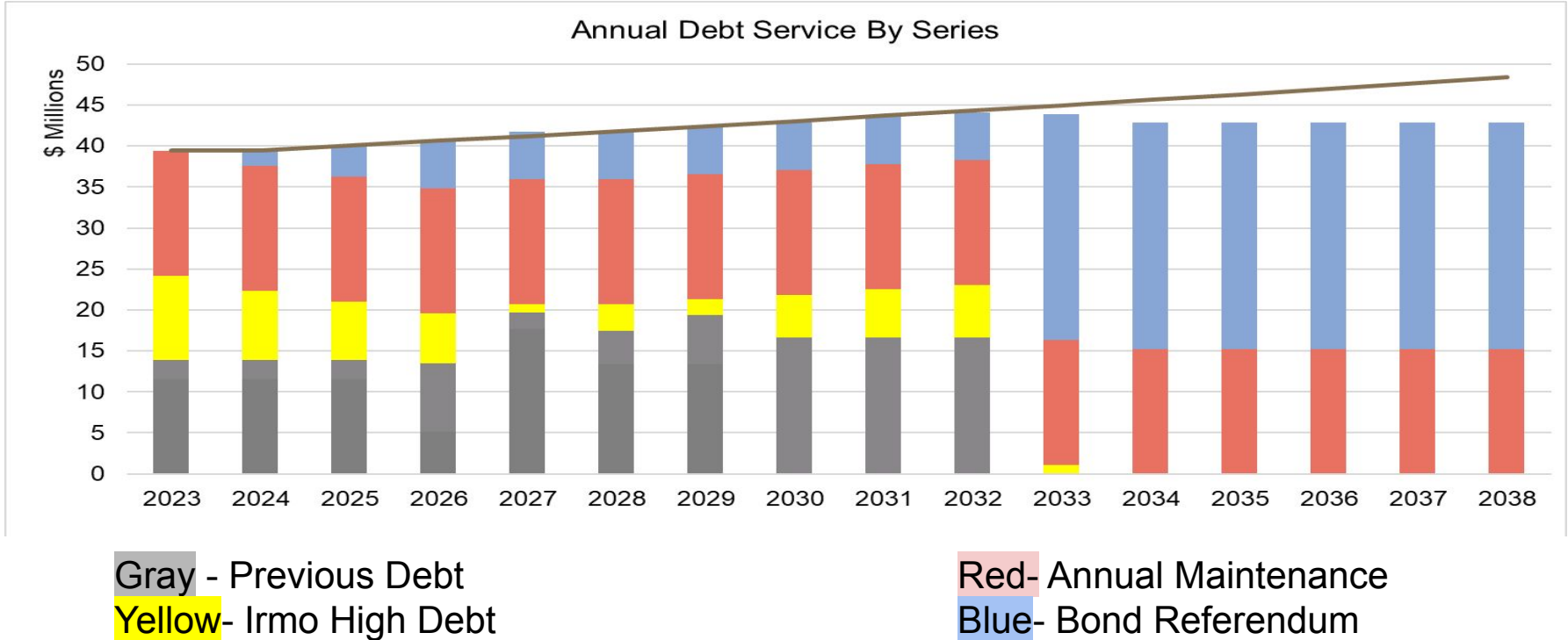


Gray - Previous Debt
Yellow - Irmo High Debt

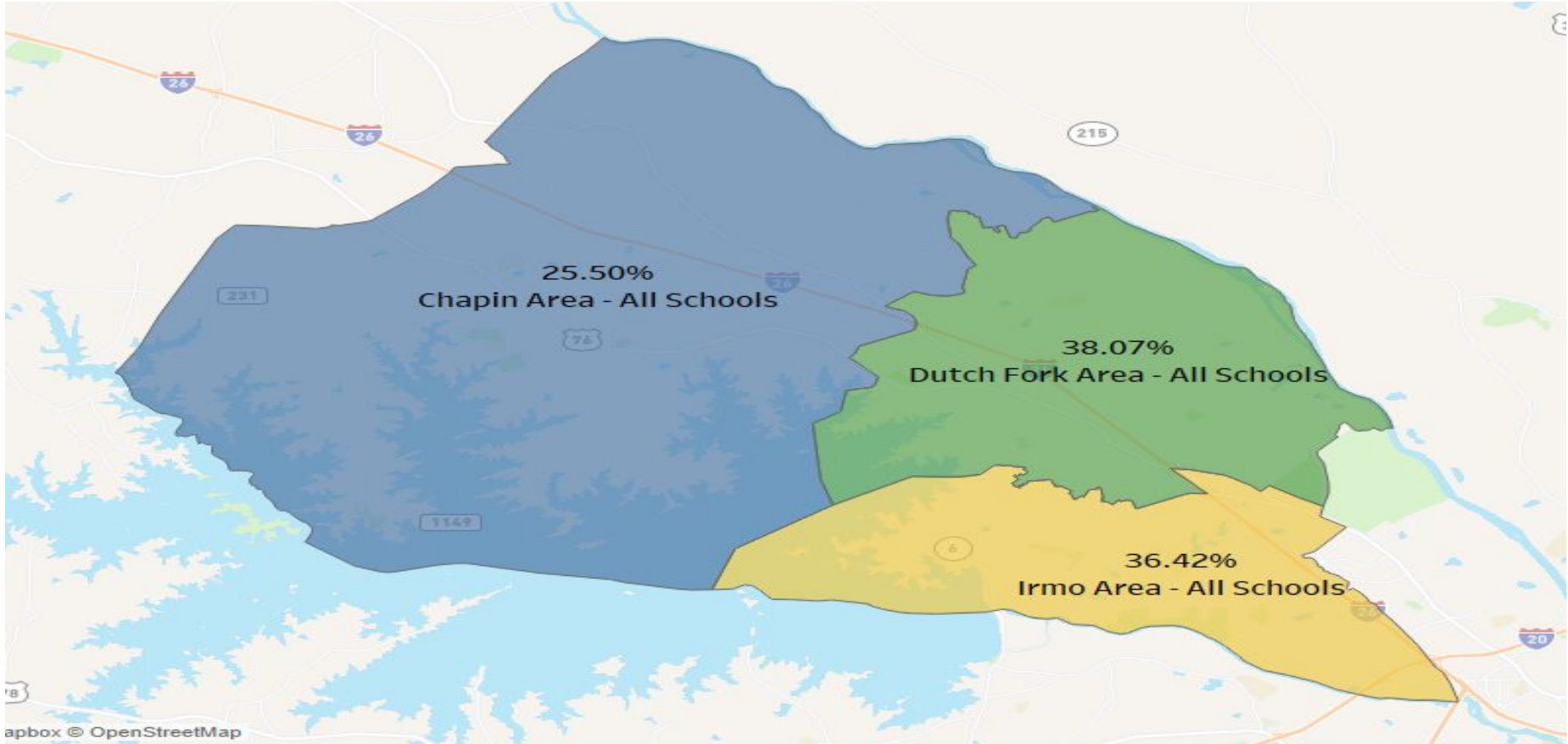
Red - Annual Maintenance
Blue - Bond Referendum



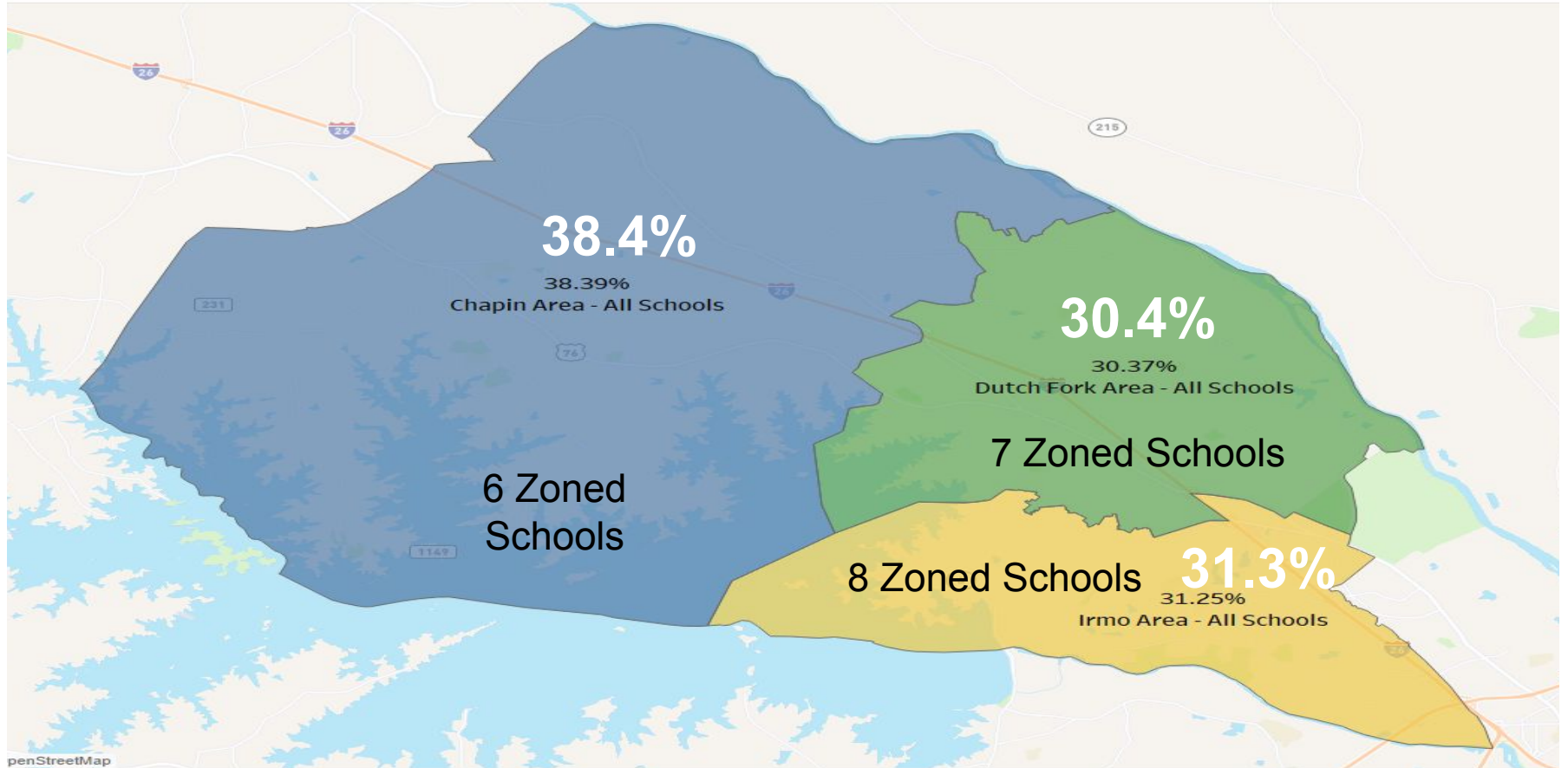
Board considers Option #4 - 68.5 Mils Saves \$4 per \$100,000 FMV



Distribution of In-Person Enrollment (2013 - 135th day report)

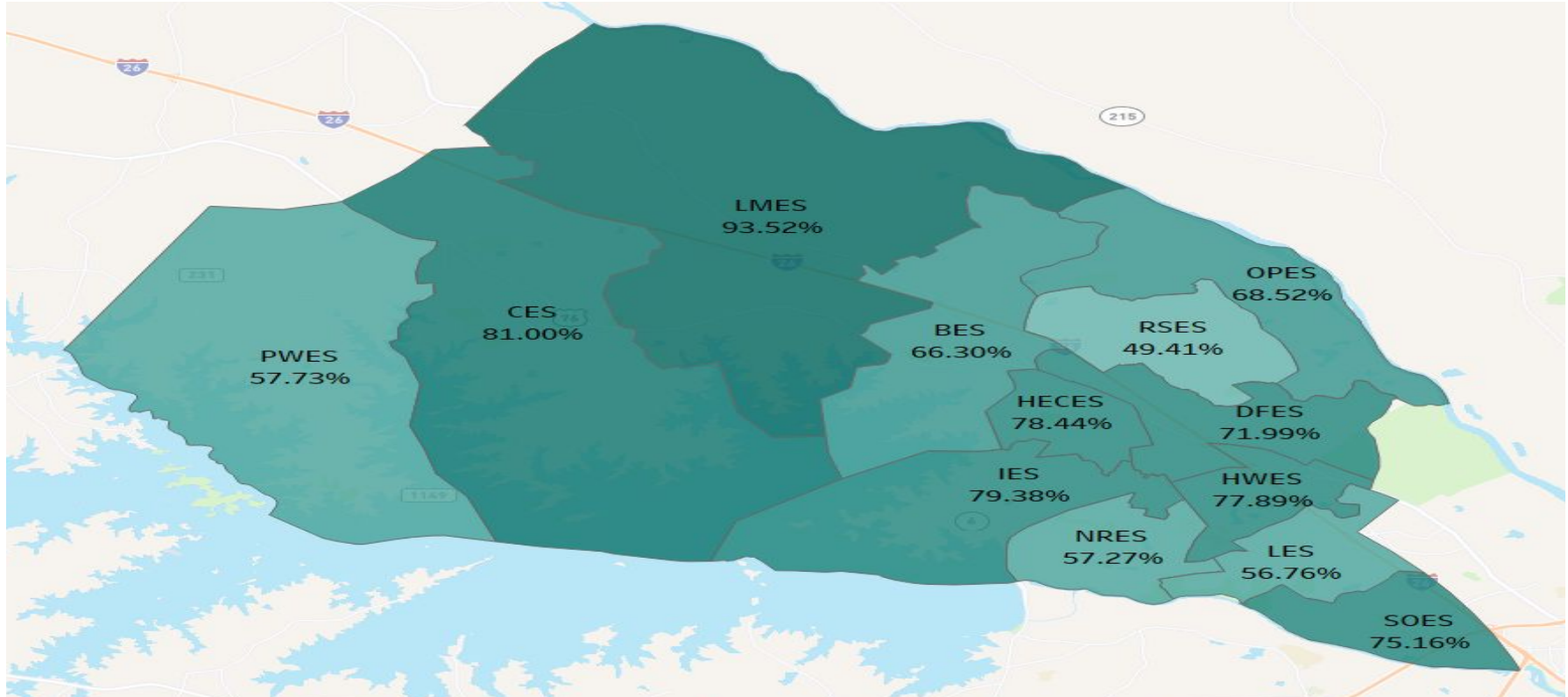


Distribution of In-Person Enrollment (2022 - 135th day report)





Elem. Occupancy Rate: In-person Enrollment 135th day 2021 - 2022





High, Middle, Intermediate Occupancy Rate: In-person Enrollment 135th day 2021 - 2022

School	135th 2022 Enrollment	Building Capacity	Percent Full
CHS	1530	1700	90%
SHHS	1085	1700	63.8%
DFHS	1586	2207	71.9%
IHS	1177	2141	54.9%

School	135th 2022 Enrollment	Building Capacity	Percent Full
CMS	904	1200	75.3%
DFMS	875	1149	76.1%
IMS	889	1181	75.3%
CIS	867	1018	85.2%
CRIS	658	1098	59.9%

School Occupancy Threshold = 80% - 85%

Alternative Education Programs

SHHS

Academy for Success

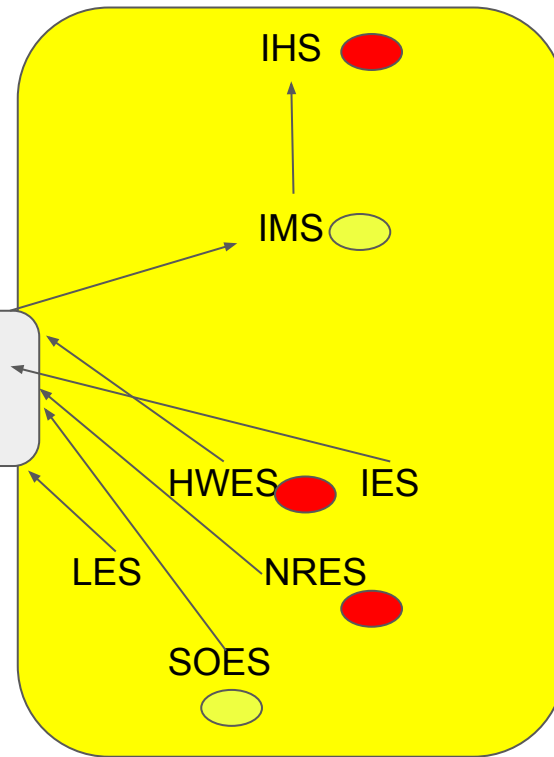
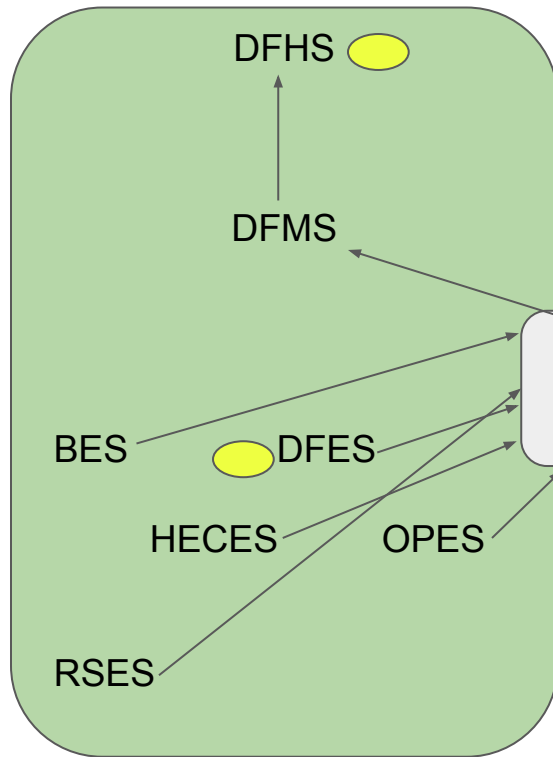
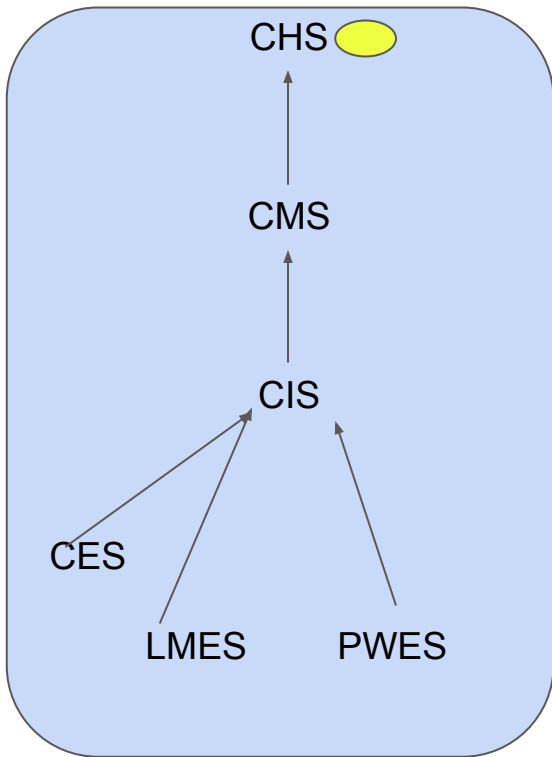
Adult Education

The Center for Advanced Technical Studies

Flexible Innovative Virtual Education (FIVE)

PHASE 1 *Bond Referendum Fails

● Poor Rated Facilities ● Fair Rated Facilities



Alternative Education Programs

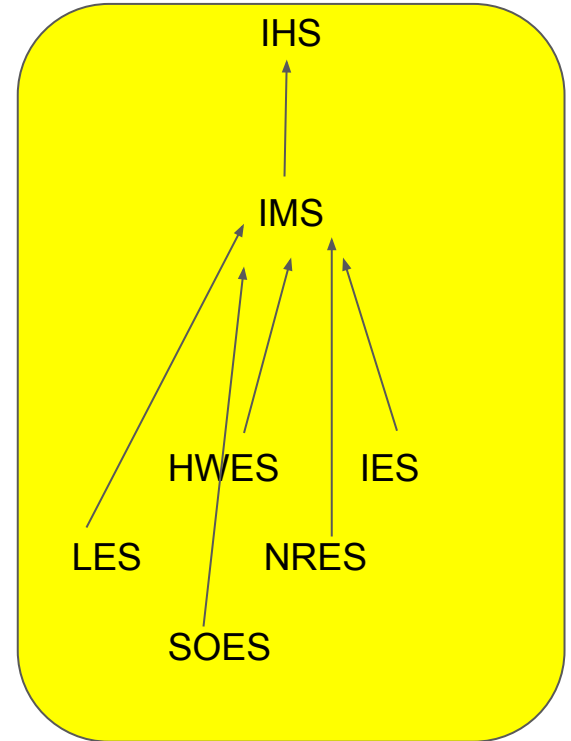
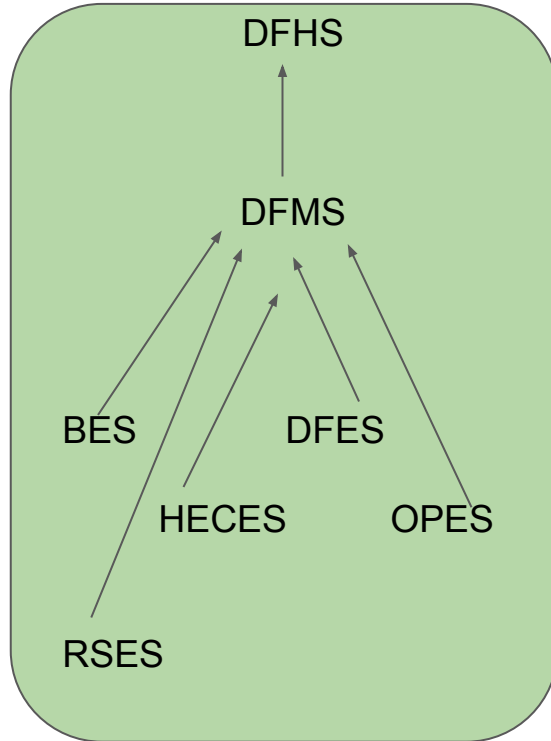
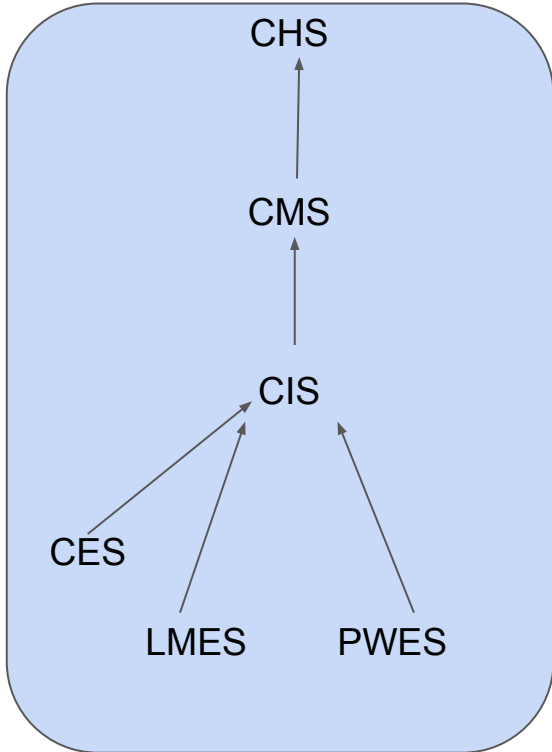
SHHS Academy for Success

Adult Education

Crossroads Early Childhood Center

The Center for Advanced Technical Studies Flexible Innovative Virtual Education (FIVE)

PHASE 2 *If Bond Referendum passes and portables are added to CHS and CIS to accommodate growth



Alternative Education Programs

SHHS Academy for Success

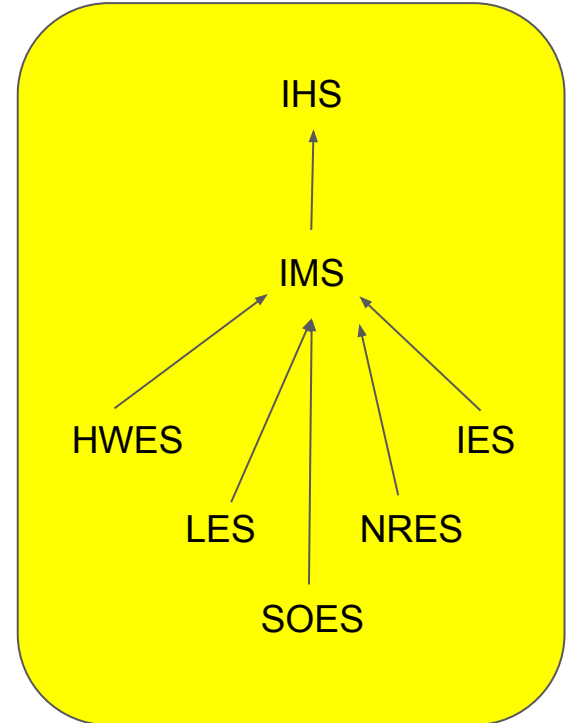
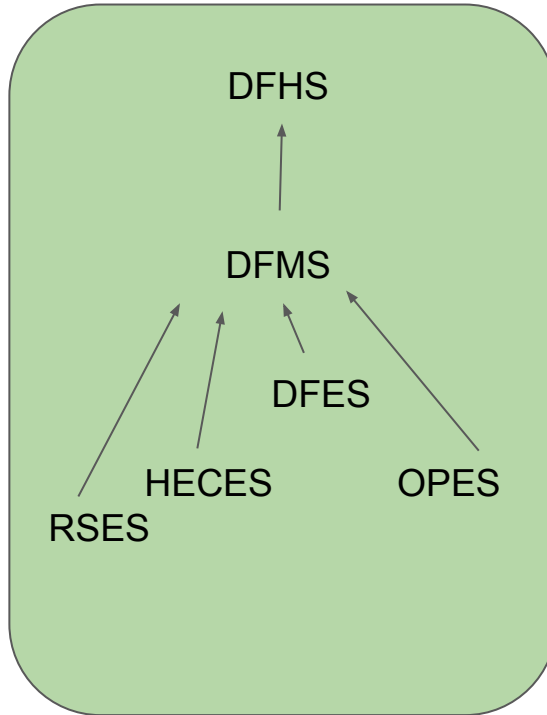
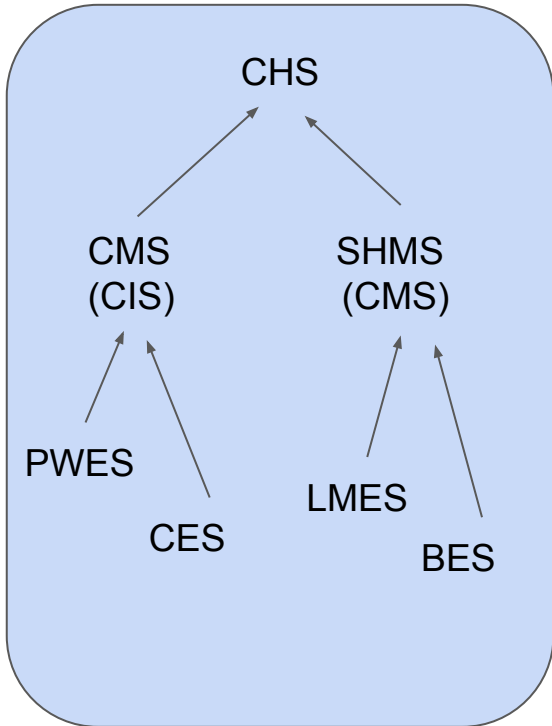
Adult Education

Crossroads Early Childhood Center

The Center for Advanced Technical Studies

Flexible Innovative Virtual Education (FIVE)

PHASE 3 *If Bond Referendum passes and because growth continues in Chapin



Alternative Education Programs

Academy for Success

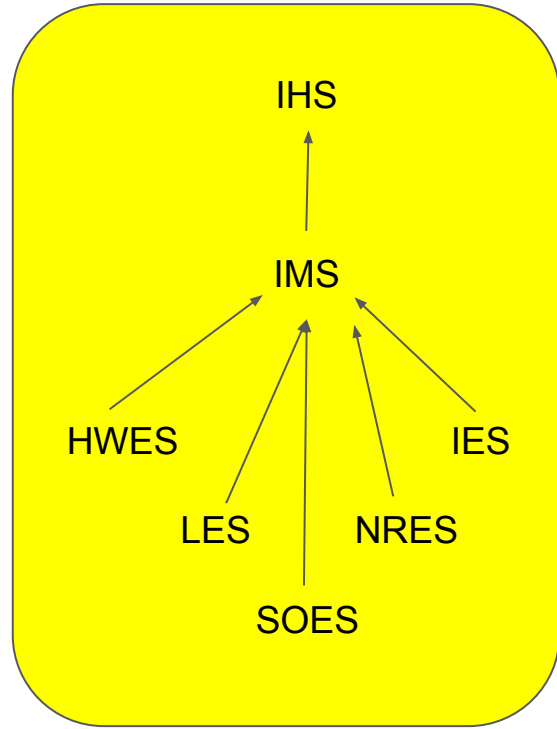
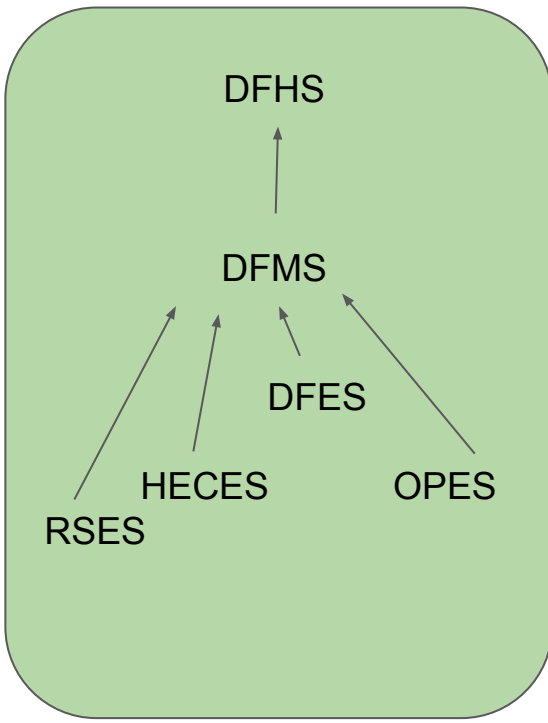
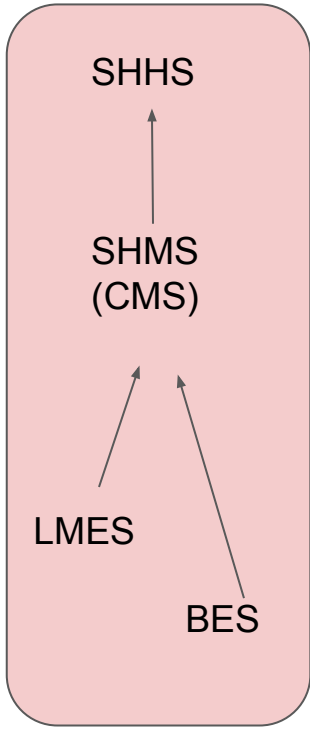
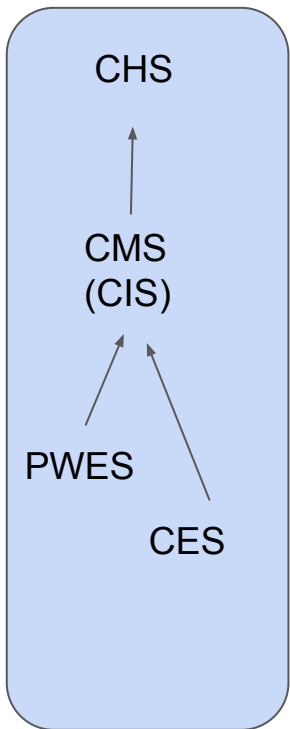
Adult Education

Crossroads Early Childhood Center

The Center for Advanced Technical Studies

Flexible Innovative Virtual Education (FIVE)

PHASE 4 *If Bond Referendum passes and growth continues in Chapin

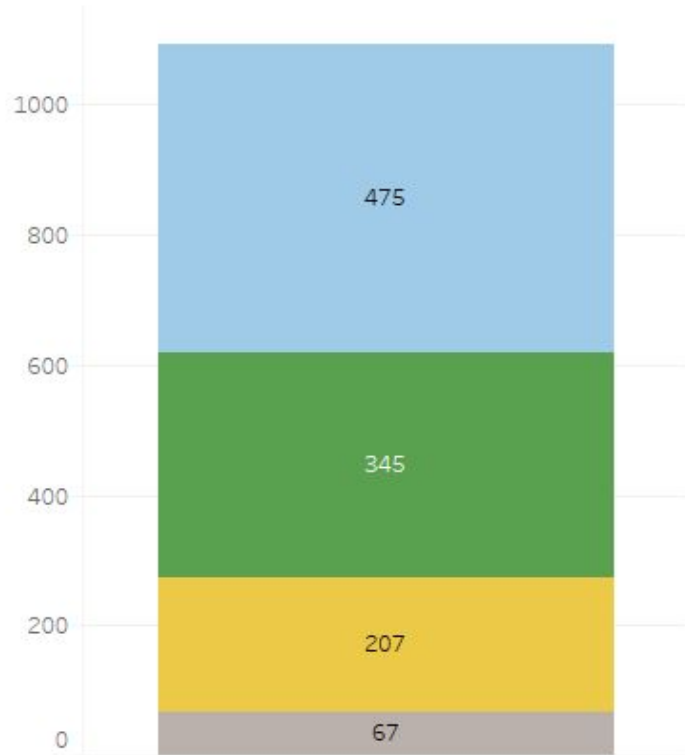




COMMUNITY FEEDBACK SURVEY

Proposed Bond Referendum

Number of Responses by Area



**Total
Responses
1,094**

Which attendance area is your family zoned to attend?

- Chapin
- Dutch Fork
- Irmo
- Outside D5

Bond Awareness by Attendance Area

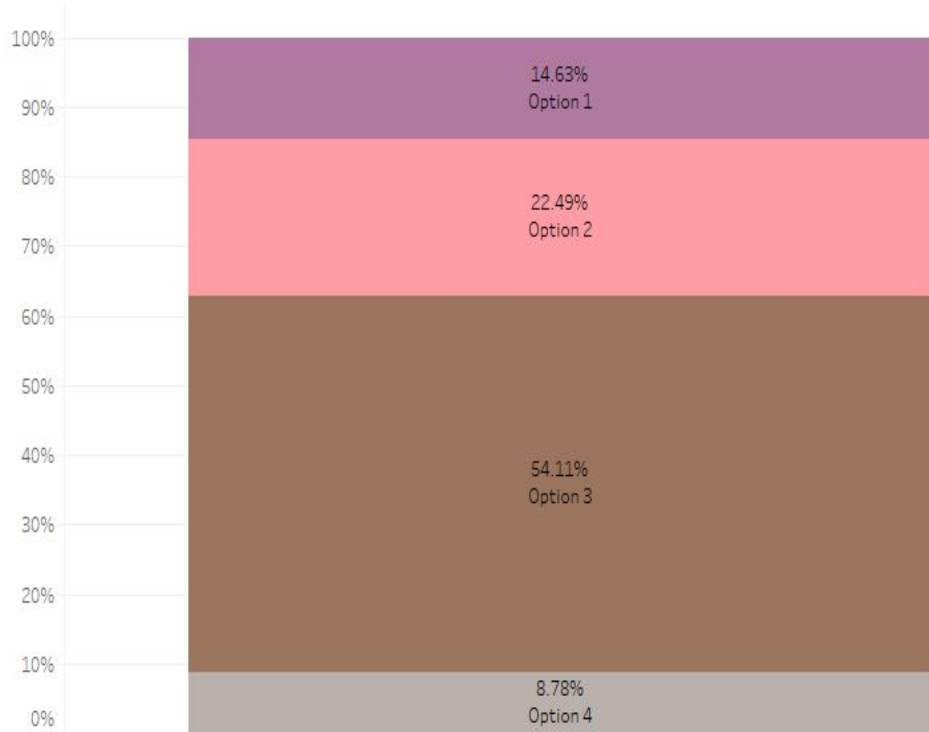


Have you heard about the proposed bond referendum?

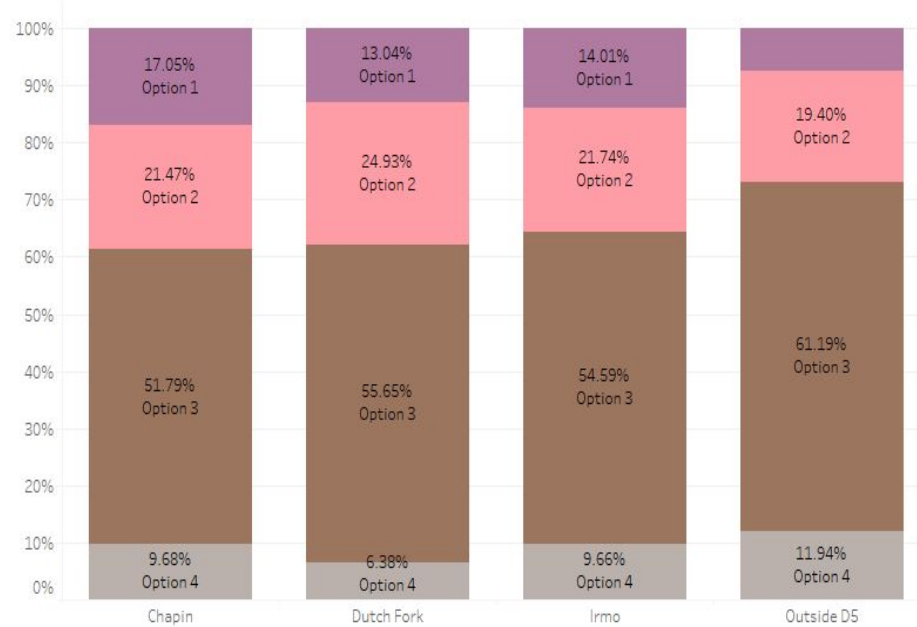
- Yes
- Yes, but not currently aware of what options are being discussed
- No

Which option do you prefer?

- Option 1
- Option 2
- Option 3
- Option 4



by Attendance Area



Chapin

**Dutch
Fork**

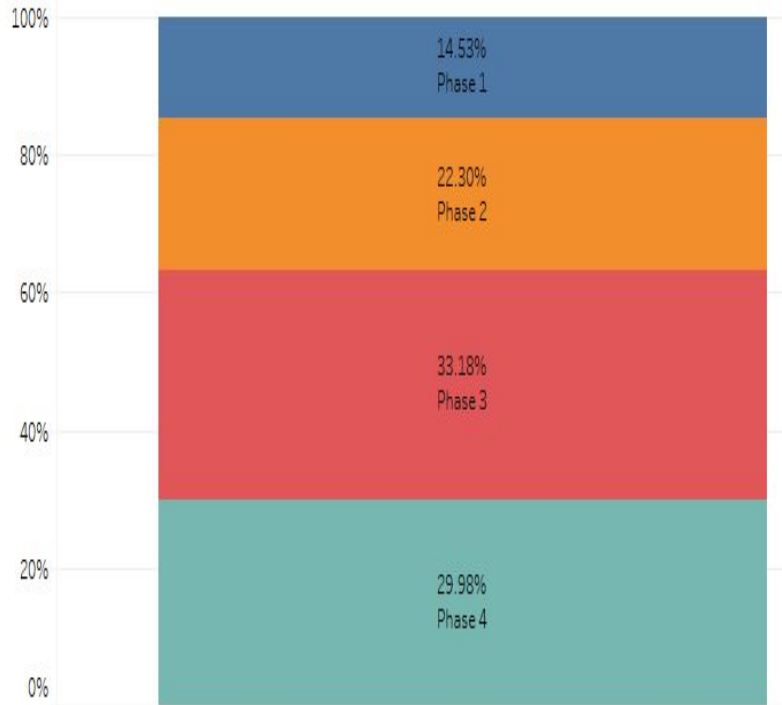
Irmo

**Outside
D5**

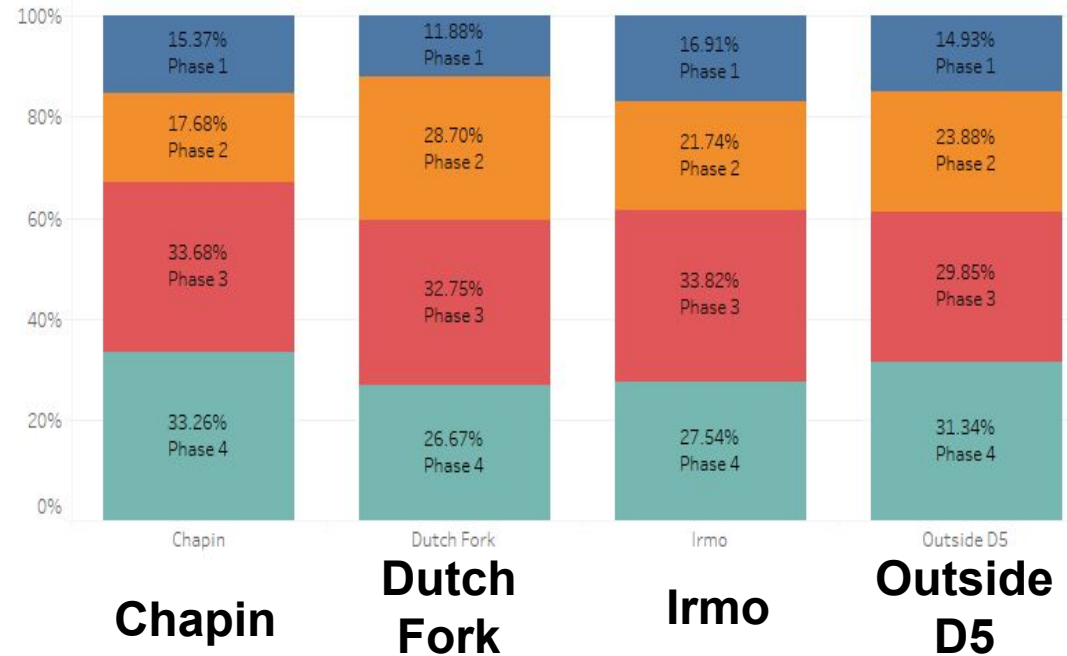
Which phase do you prefer?

Which phase do you prefer?

- Phase 1
- Phase 2
- Phase 3
- Phase 4



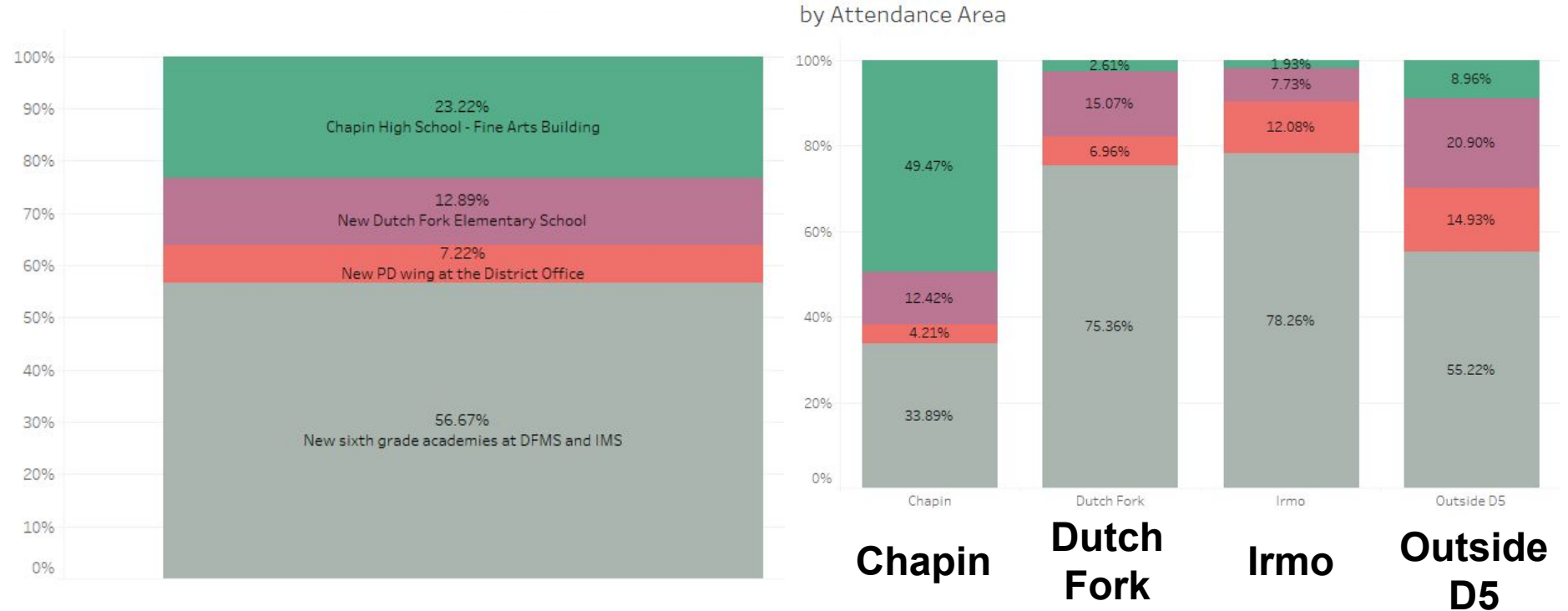
by Attendance Area



Which new construction project is most important to you?

Which new construction project in the proposed bond referendum is the most important to you?

- Chapin High School - Fine Arts Building
- New Dutch Fork Elementary School
- New PD wing at the District Office
- New sixth grade academies at DFMS and IMS

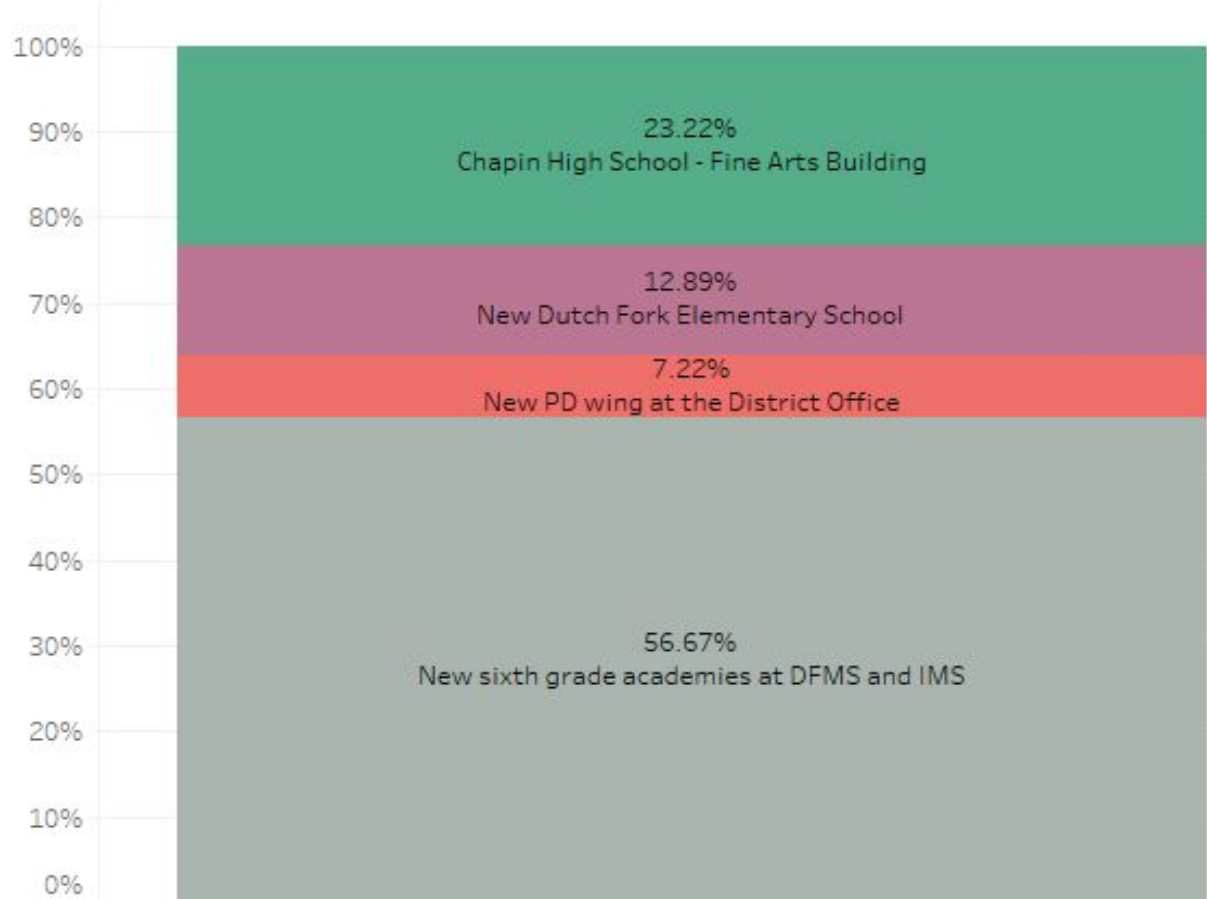


Preferred New Construction Project

Which new construction project in the proposed bond referendum is the most important to you?

- Chapin High School - Fine Arts Building
- New Dutch Fork Elementary School
- New PD wing at the District Office
- New sixth grade academies at DFMS and IMS

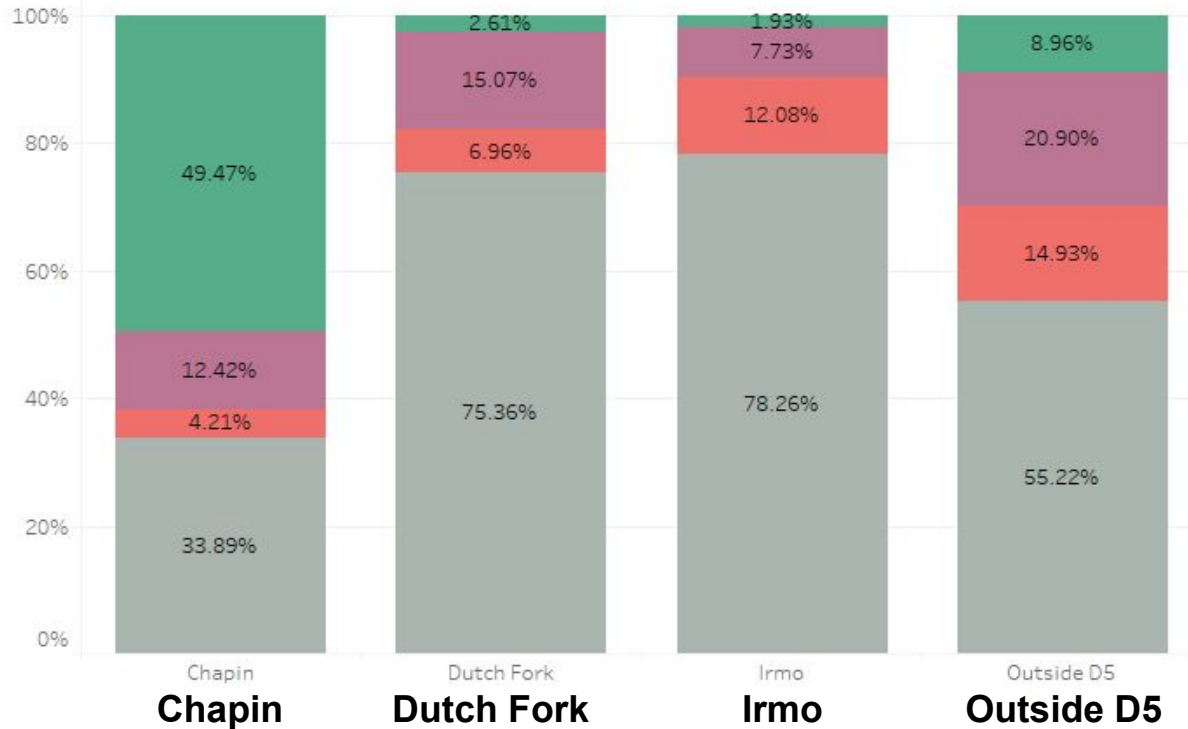
Preferred New Construction Project



Which new construction project is most important to you?

Which new construction project in the proposed bond referendum is the most important to you?

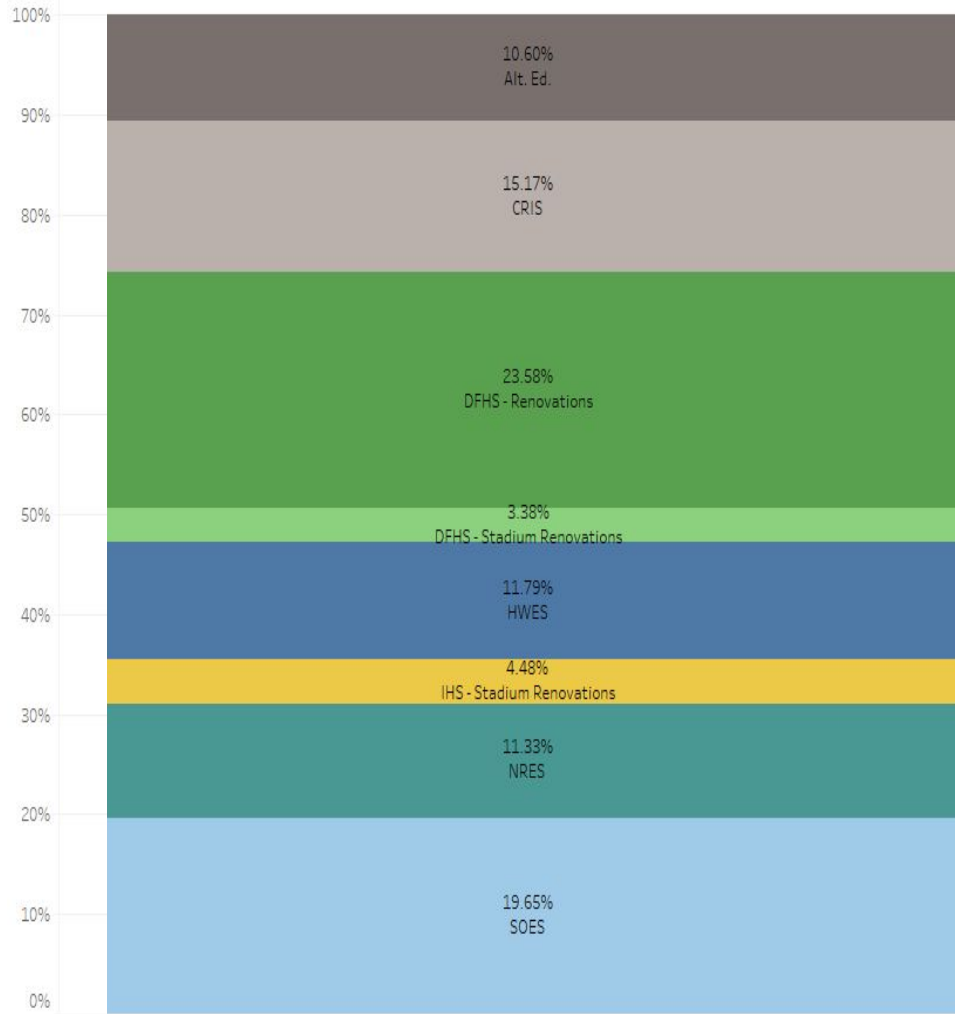
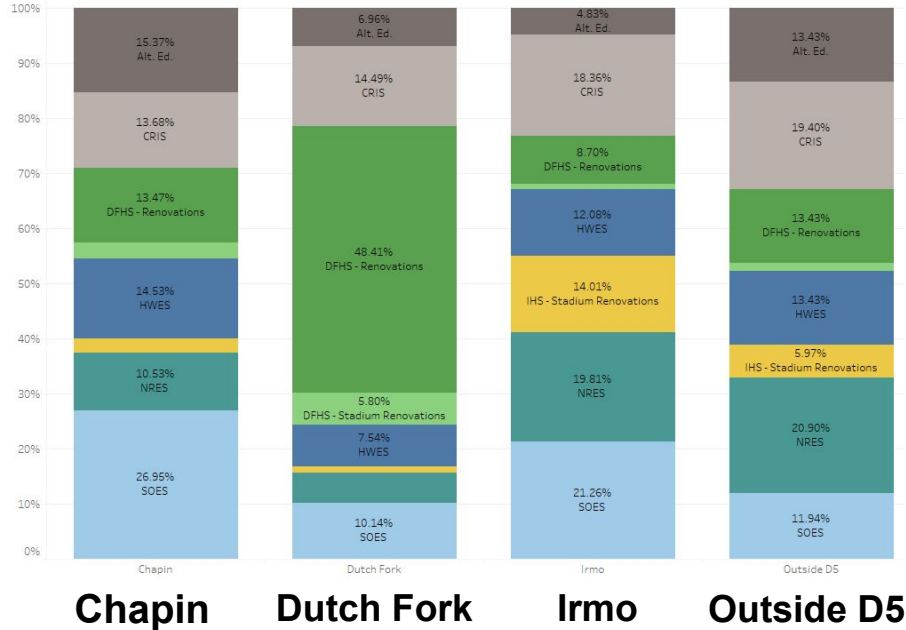
- Chapin High School - Fine Arts Building
- New Dutch Fork Elementary School
- New PD wing at the District Office
- New sixth grade academies at DFMS and IMS



Which project is the most important to you?

Which project in the proposed bond referendum is the most important to you?

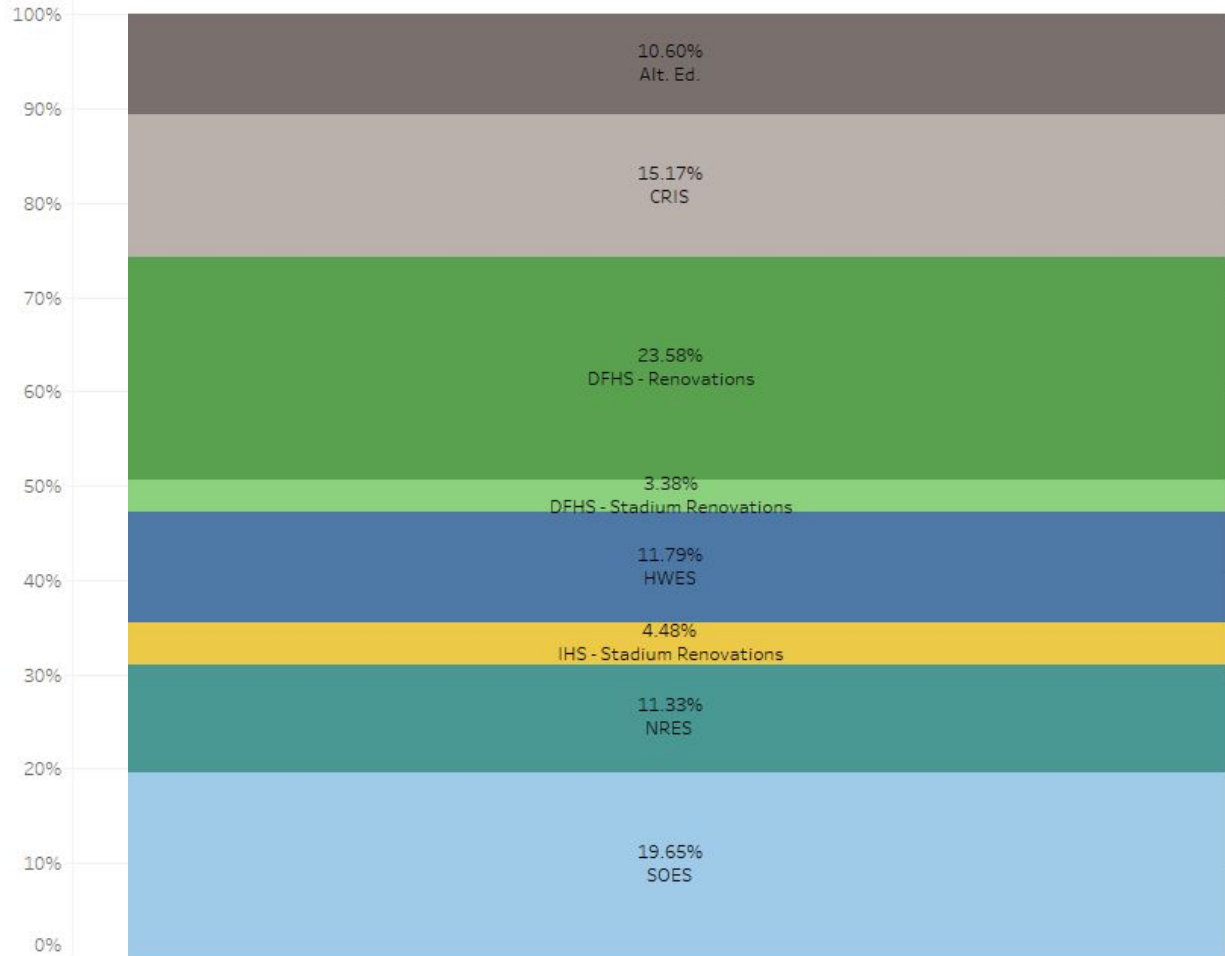
- Alt. Ed.
- CRIS
- DFHS - Renovations
- DFHS - Stadium Renovations
- HWES
- IHS - Stadium Renovations
- NRES
- SOES



Which project is most important to you?

Which project in the proposed bond referendum is the most important to you?

- Alt. Ed.
- CRIS
- DFHS - Renovations
- DFHS - Stadium Renovations
- HWES
- IHS - Stadium Renovations
- NRES
- SOES

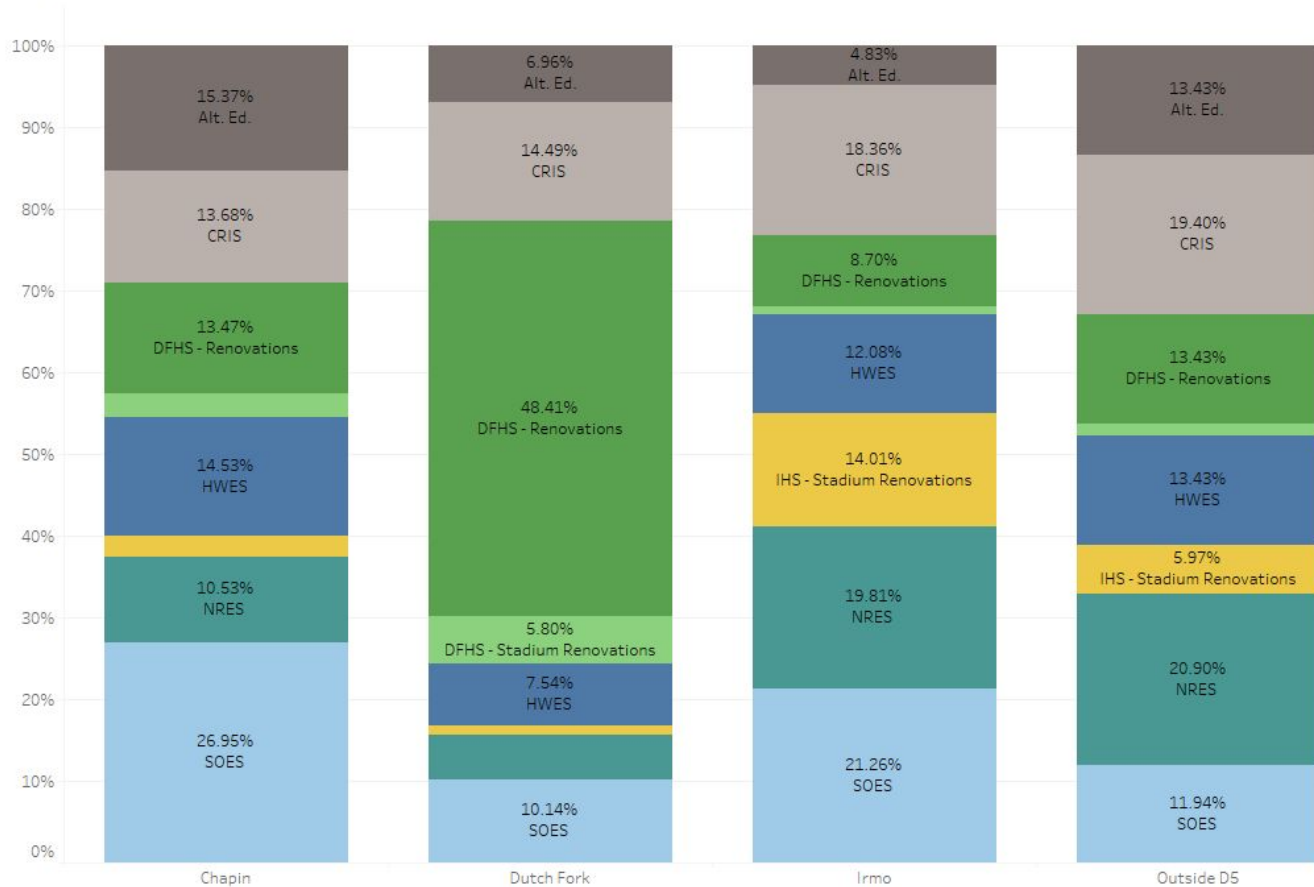


Which project is most important to you?

Which project in the proposed bond referendum is the most important to you?

- Alt. Ed.
- CRIS
- DFHS - Renovations
- DFHS - Stadium Renovations
- HWES
- IHS - Stadium Renovations
- NRES
- SOES

by Attendance Area



Chapin

Dutch Fork

Irmo

Outside D5



Poll Results



Date	Meeting	Preferred Option	Preferred Phase
May 3, 2022	Virtual Potential Bond Referendum Community Forum	3	3
May 10, 2022	Superintendent's Parent Advisory Cabinet	3	3
May 17, 2022	Virtual Potential Bond Referendum Lunch & Learn	3	3
May 19, 2022	Superintendent's Faculty Advisory Committee	3	4
June 7, 2022	Community Feedback Survey	3	3

